

# 1995 OAKLAND COUNTY DIRECTORY



GENREF

JS

261

.02

1995

c.1

**LYNN D. ALLEN**  
County Clerk & Register of Deeds

✓

**COUNTY OF OAKLAND  
MICHIGAN**

JS  
261  
.02  
1995  
e.1

**COUNTY,  
CITY, TOWNSHIP  
and  
VILLAGE OFFICERS**

OAKLAND COUNTY RESEARCH LIBRARY  
**1995** N. TELEGRAPH ROAD DEPT 453  
PONTIAC, MICHIGAN 48341-0453

**County Seat  
1200 N. TELEGRAPH ROAD  
PONTIAC, MICHIGAN 48341**

**General Information 858-1000**

**Toll free from Holly - Rose Township 634-4418**

**Toll free from South Lyon - Novi - Farmington 349-7850**

**Toll free from Southfield - Royal Oak 645-1150**

**L. Brooks Patterson, County Executive  
Larry P. Crake, Chairperson, Board of Commissioners  
Lynn D. Allen, County Clerk and Register of Deeds**

**FRONT COVER:**

In recognition of Oakland County's 175th anniversary (1820-1995), our cover picture is of the fourth county courthouse, built and dedicated in November of 1905. This Cleveland sandstone building, located on the corner of Saginaw and Huron Streets in Pontiac, was constructed at a cost of \$113,323.18. Although, at the time, it was thought Oakland County now had a courthouse "for the ages", after 56 years our fifth and present courthouse replaced the old structure. The fourth county courthouse was demolished in late 1962 and early 1963.



## TABLE OF CONTENTS

Census .....	21
Equalized Valuation .....	24
History of Oakland County .....	25 & 26
Organization Chart – County .....	27
<b>BOARD OF COMMISSIONERS</b>	
Caucus Chairperson, Majority and Minority .....	5
Chairperson, Vice-Chairperson .....	5 & 6
Committees .....	7
Members .....	5
<b>COUNTY OFFICES</b>	
Airports .....	6
Animal Control Division .....	6
Assignment Clerk (See Circuit Court Administrator) .....	6
Building Authority .....	6
Building Safety .....	6
Canvassers, Board of .....	6
Children's Services (See Probate Court Administrator) .....	11
Children's Village .....	6
Circuit Court Administrator .....	6
Circuit Court Judges .....	2
Clerk-Register of Deeds .....	6
Community Development .....	7 & 9
Community Mental Health Services .....	7 & 26
Corporation Counsel .....	7 & 9
Court Administrator (See Circuit Court) .....	6
Cultural Affairs .....	7 & 9
Deferred Compensation Board .....	7
Development and Planning Division .....	7, 8 & 30
District Court Judges .....	3 & 4
Drain Commissioner .....	8
Election Commission .....	8
Election Scheduling Committee .....	8
Emergency Management Division (See Facilities Management) .....	9
Employees Retirement Commission .....	8
Equalization Division .....	8
Executive, County .....	8 & 9
Facilities Management, Department of .....	9
Food Service Appeal Board .....	9
Friend of the Court .....	9
Health Officer .....	9
Historical Commission .....	9
Huron Clinton Metropolitan Authority .....	10
Jury Commissioners .....	10
Juvenile Court (See Probate Court) .....	11
Library Board .....	10
Medical Care Facility .....	10
Medical Examiner .....	10
Mental Health Services (See Community Mental Health) .....	7 & 26
MSU Extension .....	10
Parks and Recreation Commission .....	10, 18, 19 & 20
Personnel Appeal Board .....	11

## TABLE OF CONTENTS (continued)

Planning Division (See Development and Planning) . . . . .	7, 8 & 30
Probate Court Administrator . . . . .	11
Probate Court Judges . . . . .	2
Probation Department . . . . .	11
Prosecuting Attorney . . . . .	11
Public Administrators . . . . .	12
Risk Management and Safety . . . . .	8 & 12
Road Commission . . . . .	12 & 29
Sanitary Code Appeal Board . . . . .	12
Schools, Superintendent of . . . . .	13
Sheriff . . . . .	12
Social Services . . . . .	12
Soil and Water Conservation . . . . .	13
Solid Waste Management (See Facilities Management) . . . . .	9
Treasurer . . . . .	13
Veterans Services . . . . .	13
Water and Sewage Operations (See Drain Commissioner) . . . . .	8
<b>MAPS</b>	
Board of Commissioners . . . . .	22 & 23
Congressional . . . . .	14
Oakland County . . . . .	17
Oakland County Parks . . . . .	18
Oakland County Service Center . . . . .	28
State Representative . . . . .	16
State Senate . . . . .	15
<b>NATIONAL OFFICERS</b>	
United States Officials . . . . .	1
United States Representatives . . . . .	1
United States Senators . . . . .	1
<b>STATE OFFICERS</b>	
Appeals Court . . . . .	2
Officials . . . . .	1
Representatives . . . . .	1
Senators . . . . .	1
Supreme Court . . . . .	2
<b>CITIES</b>	
Auburn Hills . . . . .	31
Berkley . . . . .	31
Birmingham . . . . .	31
Bloomfield Hills . . . . .	32
Clarkston . . . . .	32
Clawson . . . . .	32
Farmington . . . . .	33
Farmington Hills . . . . .	33
Ferndale . . . . .	33
Hazel Park . . . . .	34
Huntington Woods . . . . .	34
Keego Harbor . . . . .	34
Lake Angelus . . . . .	35
Lathrup Village . . . . .	35



## TABLE OF CONTENTS (continued)

Madison Heights . . . . .	35
Northville . . . . .	36
Novi . . . . .	36
Oak Park . . . . .	36
Orchard Lake Village . . . . .	37
Pleasant Ridge . . . . .	37
Pontiac . . . . .	37
Rochester . . . . .	38
Rochester Hills . . . . .	38
Royal Oak . . . . .	38
Southfield . . . . .	39
South Lyon . . . . .	39
Sylvan Lake . . . . .	39
Troy . . . . .	40
Walled Lake . . . . .	40
Wixom . . . . .	40

### TOWNSHIPS

Addison . . . . .	41
Bloomfield . . . . .	41
Brandon . . . . .	41
Commerce . . . . .	42
Groveland . . . . .	42
Highland . . . . .	42
Holly . . . . .	42
Independence . . . . .	43
Lyon . . . . .	43
Milford . . . . .	43
Novi . . . . .	43
Oakland . . . . .	44
Orion . . . . .	44
Oxford . . . . .	44
Rose . . . . .	45
Royal Oak . . . . .	45
Southfield . . . . .	45
Springfield . . . . .	45
Waterford . . . . .	46
West Bloomfield . . . . .	46
White Lake . . . . .	46

### VILLAGES

Beverly Hills . . . . .	47
Bingham Farms . . . . .	47
Franklin . . . . .	47
Holly . . . . .	47
Lake Orion . . . . .	47
Leonard . . . . .	48
Milford . . . . .	48
Ortonville . . . . .	48
Oxford . . . . .	48
Wolverine Lake . . . . .	48

## NATIONAL OFFICERS

President of the United States . . . . . Bill Clinton  
 Vice President . . . . . Al Gore

### Cabinet Members:

Secretary of Agriculture . . . . . Dan Glickman  
 Attorney General . . . . . Janet Reno  
 Secretary of Commerce . . . . . Ronald H. Brown  
 Secretary of Defense . . . . . William J. Perry  
 Secretary of Education . . . . . Richard W. Riley  
 Secretary of Energy . . . . . Hazel Rollins O'Leary  
 Secretary of Health and Human Services . . . . . Donna E. Shalala  
 Secretary of Housing and Urban Development . . . . . Henry G. Cisneros  
 Secretary of the Interior . . . . . Bruce Babbitt  
 Secretary of Labor . . . . . Robert B. Reich  
 Secretary of State . . . . . Warren M. Christopher  
 Secretary of Transportation . . . . . Federico Peña  
 Secretary of Treasury . . . . . Robert E. Rubin  
 Secretary of Veterans Affairs . . . . . Jesse Brown

U.S. Senator . . . . . Spencer Abraham (R)  
 U.S. Senator . . . . . Carl Levin (D)

### U.S. Representatives:

8th District . . . . . Dick Chrysler, Brighton (R)  
 9th District . . . . . Dale E. Kildee, Flint (D)  
 11th District . . . . . Joe Knollenberg, Bloomfield Hills (R)  
 12th District . . . . . Sander Levin, Royal Oak (D)

## STATE OFFICERS

Governor . . . . . John Engler (R)  
 Lieutenant Governor . . . . . Connie Binsfeld (R)  
 Secretary of State . . . . . Candice S. Miller (R)  
 State Treasurer . . . . . Douglas Roberts  
 Attorney General . . . . . Frank J. Kelley (D)

## STATE SENATORS

State Capitol, P.O. Box 30036, Lansing, MI 48909

13th District . . . . . Michael J. Bouchard, Birmingham (R)  
 14th District . . . . . Gary Peters, Pontiac (D)  
 15th District . . . . . Dave Honigman, West Bloomfield (R)  
 16th District . . . . . Mat Dunaskiss, Lake Orion (R)  
 28th District . . . . . John D. Cherry, Jr., Clio (D)

## STATE REPRESENTATIVES

State Capitol, P.O. Box 30014, Lansing, MI 48909

34th District . . . . . John F. Freeman, Madison Heights (D)  
 35th District . . . . . David M. Gubow, Huntington Woods (D)  
 36th District . . . . . Maxine Berman, Southfield (D)  
 37th District . . . . . Jan C. Dolan, Farmington Hills (R)  
 38th District . . . . . Willis Bullard, Jr., Milford (R)  
 39th District . . . . . Barbara Dobb, Commerce Township (R)  
 40th District . . . . . John Jamian, Bloomfield Hills (R)  
 41st District . . . . . Shirley Johnson, Royal Oak (R)  
 42nd District . . . . . Greg Kaza, Rochester Hills (R)  
 43rd District . . . . . Hubert Price, Jr., Pontiac (D)  
 44th District . . . . . David N. Galloway, White Lake (R)  
 45th District . . . . . Penny M. Crissman, Rochester (R)  
 46th District . . . . . Tom Middleton, Ortonville (R)



**MICHIGAN SUPREME COURT**  
**Law Building, 2nd Floor, Lansing, MI 48909**

James H. Brickley, Chief Justice  
 Patricia J. Boyle  
 Michael F. Cavanagh  
 Charles L. Levin  
 Conrad L. Mallett, Jr.  
 Dorothy Comstock Riley  
 Elizabeth A. Weaver

**COURT OF APPEALS JUDGES**  
**DISTRICT 2**  
**109 W. Michigan Ave., P.O. Box 30022**  
**Lansing, MI 48909**

Martin M. Doctoroff, Chief Judge  
 Mark J. Cavanagh  
 E. Thomas Fitzgerald  
 Kathleen Jansen  
 Marilyn Kelly  
 Michael J. Kelly  
 Henry W. Saad

**CIRCUIT COURT JUDGES**  
**1200 N. Telegraph Rd., Pontiac, MI 48341**

Robert C. Anderson . . . . .	858-0368
Steven N. Andrews . . . . .	858-0360
David F. Breck . . . . .	858-0335
Jessica R. Cooper . . . . .	858-0337
Hilda R. Gage . . . . .	858-5282
Alice L. Gilbert . . . . .	975-4250
Barry L. Howard . . . . .	858-5284
Richard D. Kuhn . . . . .	858-0332
John J. McDonald . . . . .	858-0342
Fred M. Mester . . . . .	858-0355
Denise K. Langford Morris . . . . .	858-0363
Rudy J. Nichols . . . . .	452-2000
Francis X. O'Brien . . . . .	858-0365
Gene Schnelz . . . . .	858-5280
Edward Sosnick . . . . .	858-0340
Robert L. Templin . . . . .	858-0358
Deborah G. Tyner . . . . .	452-2005

**PROBATE COURT JUDGES**  
**1200 N. Telegraph Rd., Pontiac, MI 48341**  
**FAX (810) 452-2085**

Barry M. Grant . . . . .	858-0286
Eugene Arthur Moore . . . . .	858-0250
Sandra G. Silver . . . . .	858-0240
Joan E. Young . . . . .	858-0289

## DISTRICT COURT JUDGES, OAKLAND COUNTY, MICHIGAN

District	Name and Address	Telephone	Geographical Area
35th	<b>Ronald Lowe</b> <b>John E. MacDonald</b> 660 Plymouth Road Plymouth 48170 . . . . .	459-4740	Oakland County portion of Northville City
43rd	<b>Douglas J.M. Voss</b> 305 E. Nine Mile Road Ferndale 48220 . . . . .	547-8700	Cities of Ferndale, Hazel Park and Madison Heights
	<b>Keith Hunt</b> 43 E. Nine Mile Road Hazel Park 48030 . . . . .	547-3034	
	<b>Robert J. Turner</b> 200 W. Thirteen Mile Road Madison Heights 48071 . . . . .	583-1800	
44th	<b>Terrence H. Brennan</b> <b>Daniel Sawicki</b> 211 Williams Street Royal Oak 48068 . . . . .	546-7780	City of Royal Oak
	Probation Division. . . . .	546-6309	
45A	<b>William R. Sauer</b> 3338 Coolidge Highway Berkley 48072 Civil Division. . . . .	544-3301	City of Berkley
	Criminal and Traffic Division . . .	544-3300	
45B	<b>Marvin F. Frankel</b> <b>Benjamin J. Friedman</b> 13600 Oak Park Boulevard Oak Park 48237 Civil Division. . . . .	542-1219	Cities of Huntington Woods, Oak Park, Pleasant Ridge and Royal Oak Township
	Criminal and Traffic Division . . .	542-7042	
46th	<b>Stephen C. Cooper</b> <b>Bryan H. Levy</b> <b>Susan M. Moiseev</b> 26000 Evergreen Road Southfield 48076 Civil Division. . . . .	354-9370	Cities of Lathrup Village, Southfield and Southfield Township
	Misdemeanor/Felony . . . . .	354-9368	
	Civil Infractions/Traffic/Parking .	354-9360	
47th	<b>Frederick L. Harris</b> <b>Marla E. Parker</b> 32795 W. Ten Mile Road Farmington 48336. . . . .	477-5630	Cities of Farmington and Farmington Hills
	General Information. . . . .	Ext 10	
	Civil Division . . . . .	Ext 19	
	Probation . . . . .	Ext 37	
	Traffic/Criminal . . . . .	Ext 23	
48th	<b>Edward Avadenka</b> <b>Thomas W. Brookover</b> <b>Gus Cifelli</b> 4280 Telegraph Road Post Office Box 3200 Bloomfield Hills 48302-3200 . .	647-1141	Cities of Birmingham, Bloomfield Hills, Keego Harbor, Orchard Lake and Sylvan Lake;

(continued on next page)



## DISTRICT COURT JUDGES, OAKLAND COUNTY, MICHIGAN

District	Name and Address	Telephone	Geographical Area
48th (cont.)	Civil Division . . . . .	433-9343	Townships of Bloomfield and West Bloomfield
	Probation Department . . . . .	433-9373	
	Traffic Division . . . . .	433-9390	
50th	<b>Leo Bowman</b> <b>Christopher C. Brown</b> <b>Louis E. Fairbrother</b> <b>William Waterman</b> 70 N. Saginaw Street Pontiac 48342		City of Pontiac
	Civil Division . . . . .	857-8090	
	Criminal Division . . . . .	857-8027	
	Probation Department . . . . .	857-8091	
	Traffic Department . . . . .	857-8078	
51st	<b>Kenneth H. Hempstead</b> <b>Phyllis C. McMillen</b> 5100 Civic Center Drive Waterford 48329 . . . . .	674-4655	Township of Waterford
52nd- (1st Div.)	<b>Michael Batchik</b> <b>Harold M. Bulgarelli</b> <b>Brian W. MacKenzie</b> 48150 Grand River Ave. Novi 48374-1222		Cities of Novi, South Lyon, Walled Lake and Wixom; Townships of Commerce, Highland, Lyon, Milford, Novi, Rose and White Lake
	Civil Division . . . . .	305-6080	
	Criminal Division . . . . .	305-6460	
	Probation Division . . . . .	305-6144	
	Traffic Division . . . . .	305-6511	
52nd- (2nd Div.)	<b>Gerald E. McNally</b> 5850 Lorac, Suite 1 P.O. Box 169 Clarkston 48347		City of Clarkston; Townships of Brandon, Groveland, Holly, Independence and Springfield
	Civil Division . . . . .	625-4994	
	Criminal Division . . . . .	625-4888	
	Violations Bureau . . . . .	625-4880	
	Probation Division . . . . .	625-5957	
52nd- (3rd Div.)	<b>Ralph Nelson</b> <b>James P. Sheehy</b> <b>Robert L. Shipper</b> 135 Barclay Circle Rochester Hills 48307 . . . . .	853-5553	Cities of Auburn Hills, Lake Angelus, Rochester and Rochester Hills; Townships of Addison, Oakland, Orion and Oxford
52nd- (4th Div.)	<b>William E. Bolle</b> <b>Dennis C. Drury</b> <b>Michael A. Martone</b> 500 West Big Beaver Road Troy 48084		Cities of Clawson and Troy
	Civil Division . . . . .	528-0404	
	Criminal Division . . . . .	528-0400	

## 1994 - 1995 OAKLAND COUNTY BOARD OF COMMISSIONERS

Commissioners' Office Phone Number: (810) 858-0100

Name and Address	District Number	Phone Number
<b>Fran Amos (R)</b> 4079 Aquarina, Waterford 48329	5	or (810) 673-8394 (810) 858-0100
*** Chairperson, <b>Larry P. Crake (R)</b> 100 S. Cass Lake Road, Waterford 48328	4	or (810) 683-1777 (810) 682-6300
<b>Dan Devine, Jr. (R)</b> 555 S. Woodward Ave., Suite 600, Birmingham 48009	14	or (810) 646-7177 (810) 338-2165
<b>Nancy Dingeldey (R)</b> 2220 Euna Road, Wixom 48393	11	(810) 669-5921
<b>Sue Ann Douglas (R)</b> 1228 Main Street, Rochester 48307	8	(810) 651-1255
<b>John P. Garfield (R)</b> 1347 Ruby, Rochester Hills 48309	9	(810) 852-7199
<b>JoAnne Holbert (D)</b> 124 Oneida, Pontiac 48341	6	(810) 333-0683
<b>Donna R. Huntoon (R)</b> 9785 Crosby Lake Road, Clarkston 48346	2	(810) 625-1746
<b>Gilda Z. Jacobs (D)</b> 8353 Hendrie Blvd., Huntington Woods 48070	23	(810) 545-4136
<b>Donald W. Jensen (R)</b> 1233 Maryland Blvd., Birmingham 48009	15	(810) 647-5830
** Vice-Chairperson, <b>Ruth A. Johnson (R)</b> 8500 Gail Drive, Holly 48442	1	(810) 634-1701
<b>Eugene Kaczmar (D)</b> 31430 Meadows, Madison Heights 48071	24	(810) 585-3733
<b>Jeff Kingzett (D)</b> P. O. Box 432038, Pontiac 48343	7	(810) 340-9887
<b>Thomas A. Law (R)</b> 31640 Northwestern Hwy., Farmington Hills 48323	13	(810) 855-2505
<b>John P. McCulloch (R)</b> 1609 Cedar Hill Drive, Royal Oak 48067	22	(810) 398-7527
<b>Ruel E. McPherson (D)</b> 23439 Davey, Hazel Park 48030	25	(810) 545-7061
<b>David L. Moffitt (R)</b> 37282 Fox Glen, Farmington Hills 48331	18	or (810) 644-0880 (810) 788-3729
<b>Lawrence A. Obrecht (R)</b> 1437 Nakomis, Lake Orion 48362	3	(810) 693-8231
<b>Charles E. Palmer (R)</b> 459 John M, Clawson 48017	16	or (810) 435-9391 (810) 585-0077
* Caucus Chairperson, <b>Lawrence R. Pernick (D)</b> 26877 Northwestern, Suite #400, Southfield 48034	20	(810) 352-5140
<b>Dennis N. Powers (R)</b> 2254 E. Highland, Highland 48356	10	(810) 887-8333
<b>Nancy L. Quarles (D)</b> 18131 Magnolia Parkway, Southfield 48075	21	(810) 569-4130
<b>Kay Schmid (R)</b> 28105 Summit Drive, Novi 48377	17	(810) 349-0099
<b>Shelley G. Taub (R)</b> 1959 Shore Hill Drive, Bloomfield 48302	12	(810) 858-8870
Caucus Chairperson, <b>Donn L. Wolf (R)</b> 23826 Barfield Drive, Farmington Hills 48336	19	(313) 761-4614
***Chairperson	**Vice-Chairperson	*Former Chairperson



## COUNTY OFFICERS

Airport Committee, County . . . . .	Donn L. Wolf, Chairperson Dennis N. Powers, Vice-Chairperson Eugene Kaczmar, Secretary Karl W. Randall, Airport Manager FAX (810) 666-3341 Oakland/Pontiac Airport . . . . . 666-3900 6500 Highland Road, Waterford 48327-1649 Oakland/Troy Airport. . . . . 288-6100 2672 Industrial Row, Troy 48084-7036
Animal Control Division (K) . . . . .	Sandra L. Gay, Manager . . . . . 858-0863
Building Authority (A) . . . . .	Aleck Capsalis, Chairperson Ken Strobel, Vice-Chairperson Kevin Oeffner, Secretary L. Brooks Patterson, County Executive C. Hugh Dohany, Treasurer
Building Safety (I) . . . . .	858-0931
Canvassers, Board of (A) . . . . .	Sarah C. Dixon Ann M. Edwards Rolland (Ron) Ersin Katherine E. Jacobs Lynn D. Allen, Clerk . . . . . 858-0560
Children's Village (A) . . . . .	Michaele K. Worrell, Manager . . . . . 858-1164 Peter D. Balzerini, Administrator, Intake Treatment Services. . . . . 858-1160 Patricia A. Lahar, Administrator, Residential Treatment Services. . . . . 858-1162 General Information . . . . . 858-1150
Circuit Court Administrator – Judicial Assistant (A) . . . . .	Judith K. Cunningham . . . . . 858-0349 Margaret Horenstein, Deputy . . . . . 858-0347 Mary Jane Rigonan, Assignment Clerk . . . . . 858-0350 Carolyn Chavez, Jury Clerk . . . . . 858-0029 Angela Jordan, Pretrial Services. . . . . 858-0166
*Circuit Court Judges (A) . . . . .	(See Page 2)
*Clerk-Register of Deeds (A) . . . . .	Lynn D. Allen . . . . . 858-0560 G. William Caddell, Deputy Clerk-Register . . . . . 858-0561 Stephanie Schroeder, Chief Deputy Clerk . . . . . 858-0586 Sue Payne, Chief Deputy Register . . . . . 858-0610 Janet F. Stickley, Director of Elections . . . . . 858-0563 Thomas M. Smith, Plat Engineer. . . . . 858-1447
*Commissioners, Board of (A) . . . . .	Larry P. Crake, Chairperson Ruth A. Johnson, Vice-Chairperson Lynn D. Allen, Clerk Suzette Vogt, Chief of Administration . . . . . 858-0100
*Elected Officials	

## OAKLAND COUNTY BOARD OF COMMISSIONERS COMMITTEES FOR 1995

(First named is Chairperson, second named is Vice-Chairperson,  
third named is minority Vice-Chairperson)

Finance and Personnel . . . . .	McCulloch, Douglas, Kingzett, Jensen, Huntoon, Palmer, Schmid, Obrecht, Pernick, Kaczmar	
General Government . . . . .	Schmid, Dingeldey, Quarles, Law, Wolf, Powers, Taub, McPherson, Holbert	
Health and Human Services . . . . .	Taub, Huntoon, Holbert, Dingeldey, Amos, Devine, Jacobs	
Planning and Building . . . . .	Palmer, Garfield, Kaczmar, Law, Moffitt, Jensen, Johnson, Douglas, Kingzett, Quarles	
Public Services . . . . .	Obrecht, Powers, McPherson, Moffitt, Garfield, Amos, Devine, Jacobs	
Community Development (A) . . . . .	Richard A. Southern, Manager . . . . .	858-0493
Community Mental Health Services (A) . . . . .		
Board Members:		
Charles E. Palmer, Chairperson	Joseph Minjoe	
Calvin J. Lippitt, Vice-Chairperson	Lawrence A. Obrecht	
Aleck Capsalis	Judith Summers	
John A. Donaldson	Shelley G. Taub	
Francine I. Friedman, M.D.	Vacancy	
JoAnne Holbert	Sandra M. Lindsey, M.S.W., A.C.S.W., Director . . . . .	858-1210
Corporation Counsel (A) . . . . .	Gerald D. Poisson, Corporation Counsel . . . . .	858-0550
	Jody M. McLeod, Deputy Corporation Counsel	
	Michael D. Blaszcak, Assistant	
	John F. Ross, Assistant	
	Donald F. Slavin, Assistant	
	Gordon R. Wyllie, Assistant	
Cultural Affairs (A) . . . . .	Dwight C. Rinke, Chairperson – Cultural Council Steve Weikal, Director . . . . .	858-0415 or 858-0730
Members of Cultural Council:		
Gregg Bloomfield	Julius Kusey	Barbara Tucker
Jennifer Davidson	Lorraine Chambers McCarty	Marcia Wiltshire
Kenneth R. Gross	Nora Mendoza	Judith Wiser
Rodney D. Hammond	Dr. Alicia Renfrew	Annetta Wonnberger
Peggy Hill	Benedetto Tiseo	Robert Yares
Dick Irwin	Belen Torres	
Deferred Compensation Board (A) . . . . .	C. Vincent Luzi, Chairperson Robert Daddow, Vice-Chairperson Larry P. Crake Gerald D. Poisson C. Hugh Dohany, Secretary-Treasurer Douglas J. Williams, Plan Administrator . . . . .	858-0623
Development and Planning Division (A) . . . . .	Jeffrey A. Kaczmarek, Manager . . . . .	858-0720
Oakland County Economic Development Corporation . . . . .	Nancy McConnell, Chairperson Jay B. Shah, Vice-Chairperson Pat Jacobs, Secretary C. Hugh Dohany, Treasurer	

(Development and Planning continued on next page)



(Development and Planning continued)

Oakland County Local

Development Company . . . Patricia R. Botkin, Chairperson  
 W. Peter Kramer, President  
 Fred C. Seeley, Vice-President  
 Jeffrey A. Kaczmarek, Secretary  
 C. Hugh Dohany, Treasurer

\*Drain Commissioner (G)(I) . . . . . George W. Kuhn . . . . . 858-0958  
 Glen Yrjanainen, Chief Deputy  
 James E. Porter, Deputy and Manager,  
 Operations and Maintenance Division  
 William E. Klockow, Deputy and Manager,  
 Engineering and Construction Division  
 Joseph P. Kozma, Chief Engineer

Election Commission (A) . . . . . Joan E. Young, Chairperson  
 Lynn D. Allen, Clerk-Secretary  
 C. Hugh Dohany, Treasurer

Election Scheduling

Committee . . . . . Willie M. Redmond,  
 Pontiac School Board Member  
 Kathryn A. Dornan, Farmington Hills City Clerk  
 C. Elaine Skarritt, Milford Township Clerk  
 Lynn D. Allen, Clerk . . . . . 858-0560

Employees Retirement

Commission (A) . . . . . Dennis L. Murphy, Chairperson  
 Paul Allberry, Vice-Chairperson

Members:

Margaret Birch	James H. VanLeuven, Jr.	
Larry P. Crake	C. Hugh Dohany, Treasurer and Member	
John Dowsett	Douglas J. Williams, Secretary	
John P. McCulloch	Gerald D. Poisson, Corporation Counsel	
L. Brooks Patterson		. . . . . 858-0623

EMS/Emergency

Management Division (A) . . . . . (See Page 9, Facilities Management, Dept. of)

Equalization Division (A) . . . . . Robert O. Vandermark, Manager . . . . . 858-0775  
 Lisa A. Hobart, Administrator . . . . . 858-0760  
 Real Property Information . . . . . 858-0776

\*Executive, County (A) . . . . . L. Brooks Patterson . . . . . 858-0484  
 John L. Grubba,  
 Deputy County Executive . . . . . 858-0485  
 Douglas J. Williams,  
 Deputy County Executive . . . . . 858-0497  
 Jean Chamberlain,  
 South End Government Liaison . . . . . 858-1685  
 Delores Conaway, Coordinator,  
 Executive Office . . . . . 858-5400  
 Robert J. Daddow, Director,  
 Management and Budget . . . . . 858-0490  
 Robert E. Dustman,  
 Media and Communications Officer . . . . . 858-1048  
 Stanley Fayne, Risk Manager . . . . . 858-1014

\*Elected Officials

(County Executive continued on next page)

(County Executive continued)	Paul Funk, Director, Information Technology . . . . .	858-0810
	Thomas J. Gordon, Ph.D., Director, Human Services . . . . .	858-1293
	Rebecca E. Holowicki, Director, Community and Minority Affairs . . . . .	858-1047
	C. Vincent Luzi, Director, Personnel . . . . .	858-0542
	Gerald D. Poisson, Corporation Counsel . . . . .	858-0550
	Kenneth Rogers, Director, Community and Economic Development . . . . .	858-0278
	David W. Ross, Director, Facilities Management . . . . .	858-1208
	Carmen V. Talbot, State of Michigan Government Liaison . . . . .	858-1422
	J. David VanderVeen, Director, Central Services . . . . .	858-0516
	Steve Weikal, Cultural Affairs Coordinator . . . . .	858-0415
	Michael W. Zehnder, Director, Public Services . . . . .	858-1074
Facilities Management, Department of (I) . . . . .	David W. Ross, Director . . . . .	858-0160
	Paul N. Hunter, Manager, Facilities Engineering . . . . .	858-0125
	Richard C. Johnston, Manager – Facilities, Maintenance and Operations Division . . . . .	858-0169
	Roger J. Smith, P.E., Manager, Solid Waste Management Division . . . . .	858-1352
	Gail A. Novak, Manager, EMS/Emergency Management Division . . . . .	858-5300
Food Service Appeal Board . . . . .	Nancy Dingeldey Ruel E. McPherson William D. Mitchell Edward P. O'Rourke Rosemarie Rowney, R.N., M.P.H. Theodore Spehar Ronald L. Grimes, Administrator, Environmental Health Services . . . . .	858-1320
Friend of the Court (A) . . . . .	Joseph G. Salamone . . . . .	858-0424
	Kim Bateman, Chief Assistant	
Health Officer (A)(E) . . . . .	Rosemarie Rowney, R.N., M.P.H., Manager . . . . .	858-1410
Historical Commission . . . . .	Jennifer Radcliff, Chairperson Barbara Randau, Vice-Chairperson Janine Saputo, Secretary Elsie August Rodney Hammond Jean Milton	Dorothy Scott Lyn Sieffert Paul Stupka



Huron Clinton Metropolitan

Authority – Commission . . . . . Livingston – James Young, Chairperson  
 Macomb – Thomas Welch, Vice-Chairperson  
 Oakland – James Clarkson, Treasurer  
 Wayne – William E. Kreger  
 Governor App. – Harry E. Lester  
 Washtenaw – Robert W. Marans  
 Governor App. – Mrs. Jeanette S. Weiss  
 William P. Sherman, Director  
 Administrative Office:  
 13000 High Ridge Dr., P.O. Box 2001  
 Brighton, MI 48116-8001  
 (810) 227-2757 or Toll Free No. 1-800-47-PARKS

Jury Commissioners (A) . . . . . Mariann Hampton . . . . . 858-0378  
 Flora Whan . . . . . 858-0593  
 Vacancy

Library Board (A) . . . . . C. Hugh Dohany, Chairperson  
 Robert Gaylor, Secretary  
 Hon. Steven Andrews Dr. James Redmond  
 Donald W. Jensen Robert Tera  
 Robert A. Marten  
 Phyllis Jose, Director,  
 Library Services . . . . . 858-0380

Medical Care Facility (A) . . . . . Shirla F. Kugler, Administrator  
 Cindy Davis, Assistant Administrator  
 Donald Dreyfuss, D.O., Medical Director  
 Caroline Parker, R.N.,  
 Nursing Director/Admissions . . . . . 858-1415

Medical Examiner (A) . . . . . Ljubisa J. Dragovic, M.D.,  
 Chief Forensic Pathologist/Medical Examiner  
 . . . . . 858-4046  
 William MacDonald, Administrator . . . . . 858-4045  
 Kanubhai Virani, M.D.,  
 Deputy Chief Forensic Pathologist . . . . . 858-4044  
 Philip Predmore, Ph.D., Chief Toxicologist  
 . . . . . 858-4042  
 Office Information . . . . . 858-5097

MSU Extension –  
 Oakland County (A) . . . . . Wayne H. Nierman, Ph.D.,  
 County Extension Director . . . . . 858-0885  
 Greg Patchan, Horticulture . . . . . 858-0887  
 Lois Thieleke, Home Economics . . . . . 858-0897  
 Sylvia Treitman, Food and Nutrition . . . . . 858-0904  
 Thomas Schneider, 4-H Youth Programs . . . . . 858-0889  
 Kathy Fraser, Natural Environment . . . . . 858-0895

Parks and Recreation  
 Commission (D) . . . . . Pecky D. Lewis, Jr., Chairman  
 Jean M. Fox, Vice-Chairman  
 Richard D. Kuhn, Jr., Secretary  
 Ruth A. Johnson  
 George W. Kuhn L. Brooks Patterson  
 Thomas A. Law Kay Schmid  
 John E. Olsen Richard Skarritt  
 Jon J. Kipke, Assistant Manager  
 Ralph Richard, Manager . . . . . 858-0906

Personnel Appeal Board . . . . .	Dennis N. Powers, Chairperson Donald W. Jensen, Vice-Chairperson Thomas Balone John W. Graham Jean Milton	
Probate Court Administrator – Probate/Juvenile Register (A)(H) . . . . .	Robert L. Bingham . . . . . 858-0950 William P. Bartlam, Deputy Court Administrator, Judicial Support . . . . . 858-0977 John L. Cooperrider, Deputy Court Administrator, Administrative Support . . . . . 858-0256 Pamela Howitt, Ph.D., Deputy Court Administrator, Court Services . . . . . 858-0247 Estates and Mental Health Division, General Information . . . . . 858-0260 Juvenile Division, General Information . . . . . 858-0112	
Probation Department, Adult (A)(B) . . . . .	Darlene C. Schimmel, Chief Probation Officer . . . . . 858-0300	
*Prosecuting Attorney (A)(H) . . . . .	Richard Thompson . . . . . 858-0656 Lawrence Bunting, Chief Assistant Larence Kozma, Chief of Legal Operations	

#### ASSISTANT PROSECUTORS

Lisa Asadoorian	Carlo Ginotti	Anica Letica	E. Reid Roe
Kathryn Barnes	Leonard Gorz	Jody Lipton	Lynda Rubin
Marc Barron	Thomas Grden	Steven Lynch	Michael Salhaney
Mark Bilkovic	Renee Gucciardo	Pamela Maas	Margaret Scott
Amy Bowen	James Halushka	Lisa Madzia	J. Randall Secontine
Mary Ellen Brennan	Scott Hamilton	Matthew Martin	John Shakarjian
Richard Browne	Beth Hand	Cheryl Matthews	John Skrzynski
Rose Marie Bully	Kirsten Hartig	Thomas McAndrew	John Slevin
David G. Case	Robert Hedges	Kathryn McCarthy	Sydney Smith
Kelly Chard	Shareen Hindo	Frederick Miller	Charles Snell
Matthew Chodak	Marcel Hurt	Jennifer Morgan	Paul Stablein
Susan Chrzanowski	Stacey Isles	Karen Mysliwicz	Mary Stiel
Brett Chudler	Janice Kabodian	Daniel O'Brien	Lisa Tomko
Edward J. Cibor	Roman Kalytiak	John O'Brien, II	Gregory J. Townsend
R. Charles Claus	Deborah Kavulich	John Pallas	Gary Tunis
Joseph Colianne	Deanna Kelley	Donna Pendergast	Karen Urbin
Robert Cooper	Debra King	Jason Pernick	Steven Vitale
Ronald Covault	Elizabeth Kulesz	Sheila Phillips	Paul Walton
Denise Creamer	Andrea LaFranca	Sara Pope	Robert Williams
Marilyn Day	Mary Ann Larkin	Thomas Richards	Karen Zorn
Diane Dickow	Daniel Lemisch	Neil Rockind	Brian Zubel
Carol Garagiola			

\*Elected Officials



Public Administrators . . . . .	Stephen C. Albery . . . . . Bloomfield Hills 858-2303 Patricia F. Donaldson . . . . . Bloomfield Hills 645-2345 Paul E. Dufault . . . . . Royal Oak 399-7272 Irving B. Feldman . . . . . Southfield 352-1100 Stanley G. Feldman . . . . . Southfield 357-3900 Howard T. Linden . . . . . Southfield 358-4545 Lynn Beatrice Rose . . . . . Birmingham 646-6442
Risk Management and Safety (A) . . . . .	Stanley B. Fayne, Risk Manager . . . . . 858-5264 Workers' Compensation . . . . . 858-1588
Road Commission (C)(J) . . . . .	645-2000 Rudy D. Lozano, Chairperson Richard V. Vogt, Vice-Chairperson John E. Olsen, Commissioner Brent O. Bair, Managing Director and Secretary/Clerk Gerald M. Holmberg, Deputy Managing Director and County Highway Engineer James Barbaresso, Director of Planning and Development Patrick Carty, Director of Legal John Joy, Public Information Officer Deborah Mathews, Deputy Secretary/Clerk Dennis A. Lockhart, Director of Finance Doris Webster, Director of Personnel Kent Rubley, Director of Engineering C. Hugh Dohany, Treasurer . . . . . 645-9530 (C) David Allyn, Director of Traffic-Safety . . . . . 858-4820 (C) James Dunleavy, Director of Highway Maintenance . . . . . 858-4881 (C) William McEntee, Director of Permits and Environmental Concerns . . . . . 858-4835 (C) Michael Richardson, Director of Citizen Services . . . . . 858-4804 (C) George Suarez, Director of Central Operations . . . . . 858-4798
Sanitary Code Appeal Board. . . . .	Nancy Dingeldey Ruel E. McPherson William D. Mitchell Edward P. O'Rourke Theodore Spehar Ronald L. Grimes, Administrator, Environmental Health Services . . . . . 858-1320
*Sheriff (A) . . . . .	John F. Nichols . . . . . 858-5008 Henry Buffa, Undersheriff . . . . . 858-5002
Social Services (L) . . . . .	Gale R. Colwell, Board Chairwoman Clarence D. Green, Ph.D., Board Vice-Chairman Chester W. Koop, Board Member Booker T. Dennis, Director . . . . . 858-1502 Gerald W. Hall, Deputy Director . . . . . 858-1505 District I Vacancy . . . . . 975-5445 District II Donald Dersnah, Manager . . . . . 583-8700 District III Richard Holmes, Manager . . . . . 669-7600 District IV Kathryn McDonald, Manager . . . . . 975-5200 District V Melvin Kaufman, Manager . . . . . 858-1506

\*Elected Officials

Soil and Water	
Conservation District . . . . .	Robert Ousnamer, Chairperson 7151 Ortonville Road, Suite 205, Clarkston 48346 . . . . . 620-0863 or 620-0763
Superintendent of Schools . . . . .	James Redmond, Ph.D., . . . . . 858-2121 Herman Dick, Ed.D., Deputy Superintendent Rick Simonson, Assistant Superintendent of State/Federal Affairs Joseph Flora, Ed.D., Director of Personnel Sandra Hendin, Controller 2100 Pontiac Lake Road, Waterford 48328-2735
*Treasurer (A) . . . . .	C. Hugh Dohany . . . . . 858-0623 Patrick M. Dohany, Chief Deputy . . . . . 858-0624 Arthur Halsey, Chief, Treasurer's Accounting . . . . . 858-0621 James VanLeuven, Chief, Tax Administration . . . . . 858-0611
Veterans Services (A)(H) . . . . .	Carl A. Pardon, Manager . . . . . 858-0785 Diana Calvin, Supervisor – Pontiac Office John (Jack) Becher, Supervisor Royal Oak Branch Office . . . . . 542-0220 Soldier's Relief Commission: Thelma Cannon          Arthur A. Gale          Elmer Kretsch
Veterans, Michigan Trust Fund (H) . . . . .	Royal Oak . . . . . 542-5090
*Elected Officials	

### LOCATION OF COUNTY DEPARTMENTS

*NOTE: FOR EFFICIENT MAIL DELIVERY,  
CONTACT EACH DEPARTMENT FOR INDIVIDUAL EXTENDED ZIP CODE.*

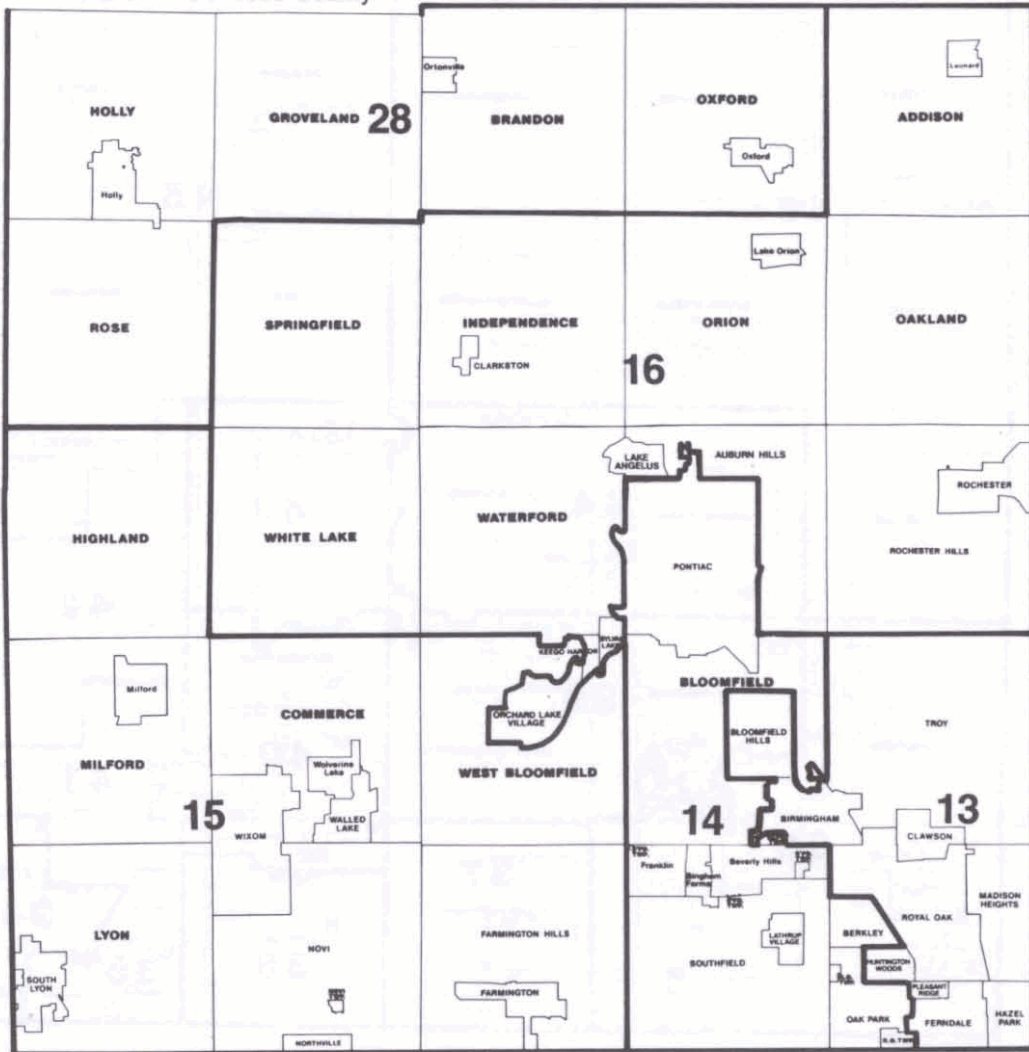
- (A) County Service Center  
1200 N. Telegraph Road, Pontiac 48341  
County Service Center – Sheriff's Department  
1201 N. Telegraph Road, Pontiac 48341-1044
- (B) 111 South Troy, Royal Oak 48067
- (C) 2420 Pontiac Lake Road, Waterford 48328
- (D) 2800 Watkins Lake Road, Waterford 48328
- (E) 27725 Greenfield Road, Southfield 48076
- (F) 930 East Drahner Road, P.O. Box 9, Oxford 48371
- (G) 29142 Stephenson Highway, Madison Heights 48071
- (H) 2401 East Fourth, Royal Oak 48067
- (I) 1 Public Works Drive, Waterford 48328-1907
- (J) 31001 Lahser Road, Beverly Hills 48025
- (K) 1700 Brown Road, Auburn Hills 48326
- (L) Central Administration – 196 Oakland Ave., Pontiac 48342  
DISTRICT I – 1125 N. Perry, Pontiac 48340  
DISTRICT II – 31170 John R, Madison Heights 48071  
DISTRICT III – 195 Ladd Road, Walled Lake 48390  
DISTRICT IV – 235 N. Saginaw St., Pontiac 48342  
DISTRICT V – 196 Oakland Ave., Pontiac 48342





# 2018 STATE SENATE DISTRICTS

Balance in Genesee County

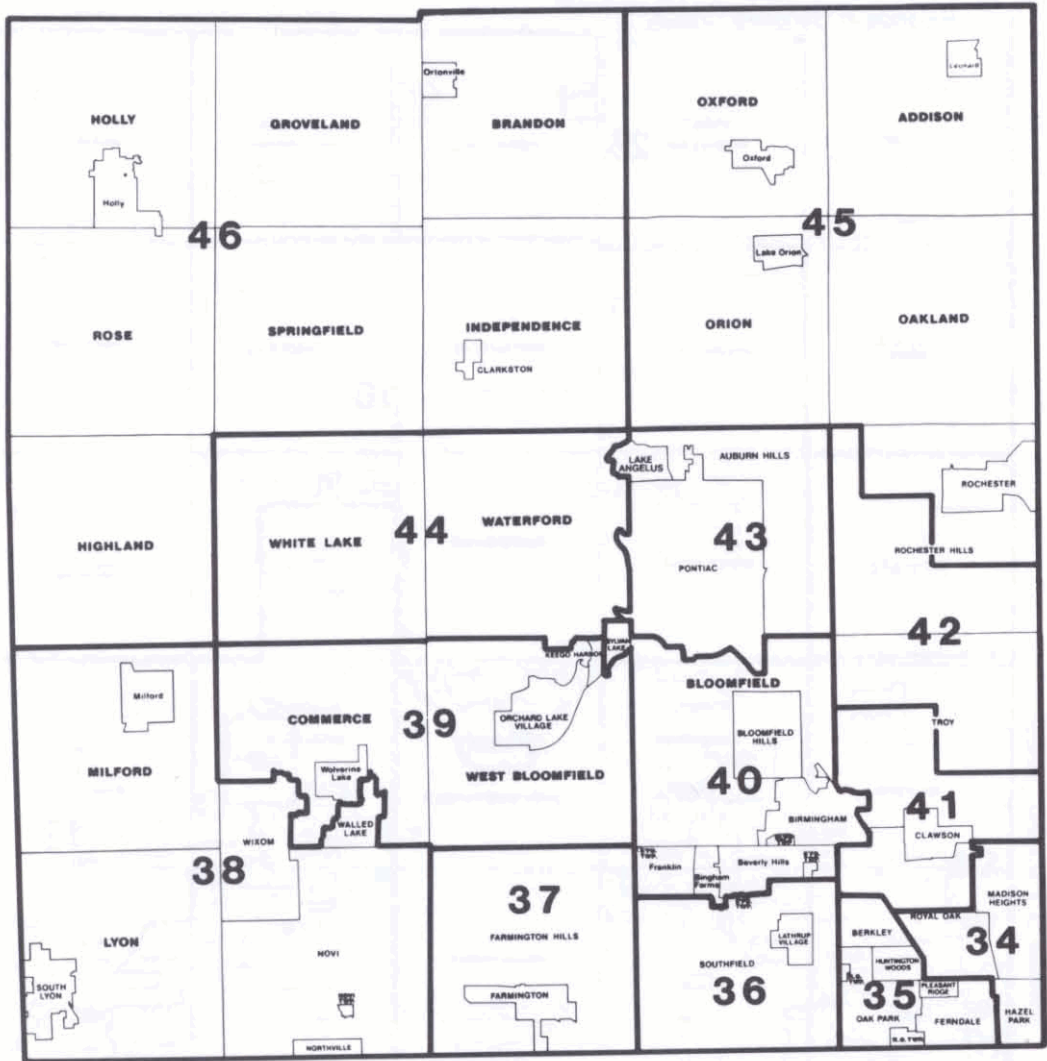


CITY  
Village  
TOWNSHIP

OAKLAND COUNTY  
MICHIGAN  
Oakland County Planning Division



# STATE REPRESENTATIVE DISTRICTS



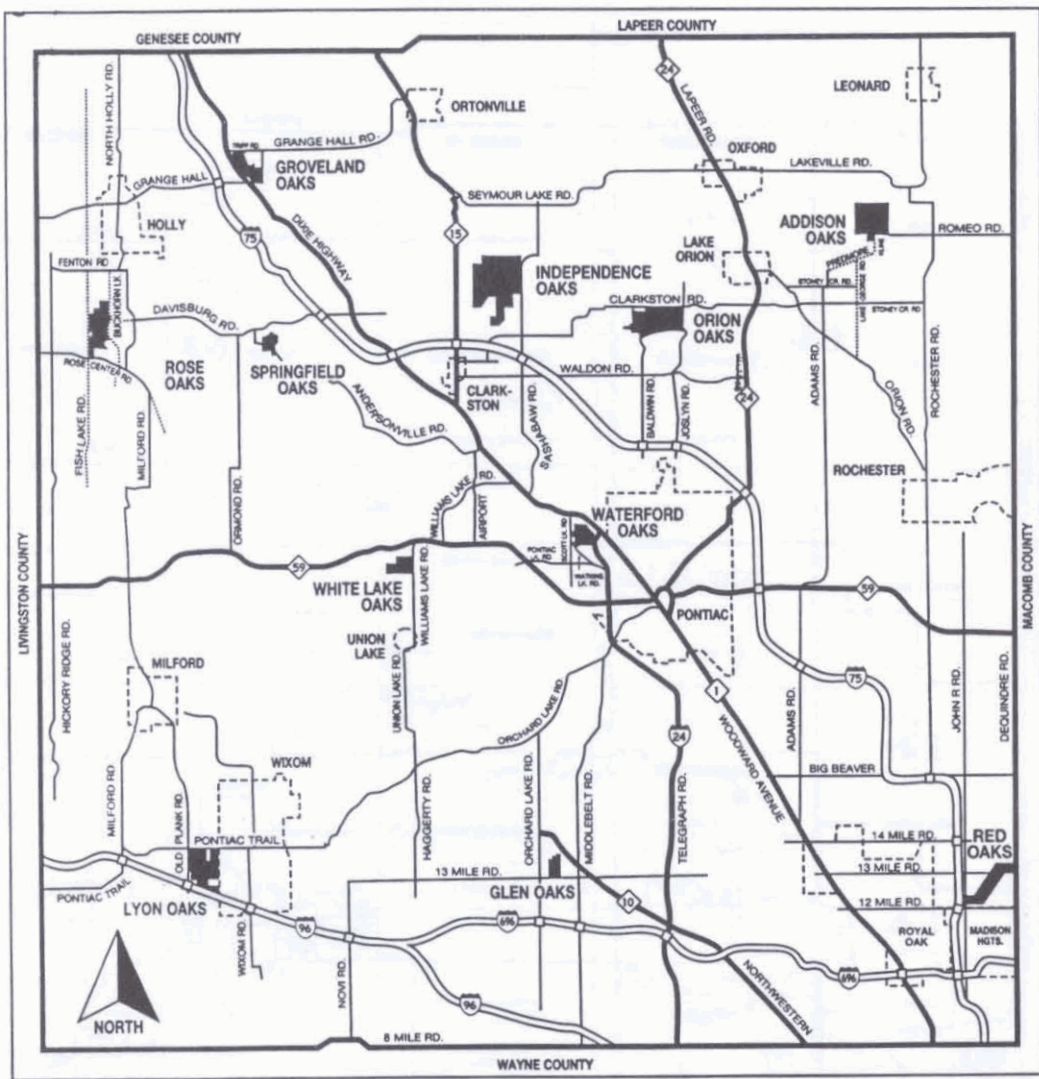
CITY  
Village  
**TOWNSHIP**

JANUARY 1993

OAKLAND COUNTY  
MICHIGAN  
Oakland County Planning Division







---

## DISCOVER THE OAKLAND COUNTY PARKS

With preservation of open greenspace a top priority, the Oakland County Parks and Recreation Commission strives to enhance the quality of life for its 1.5 million annual visitors.

Recreational, leisure and learning experiences are made possible through special events, programs and facilities supported, in part, by a one-quarter mill tax. Oakland County residents have approved the tax five times, supporting the parks system with an annual stipend of \$12 (per a \$100,000 home).

More than 5,600 acres of land have been acquired by the Oakland County Parks since 1966, with assistance from state and federal governments.

Ten citizens comprise the policy-setting Oakland County Parks and Recreation Commission. The 11 Oakland County Parks function in an environmentally-sensitive manner to protect the natural world for future generations.

A leader in innovative facilities and programs, the parks offer two wave-action pools with waterslides, Michigan's only refrigerated toboggan run – "The Fridge", a year-round, dome-covered driving range, a nature interpretive center, an outdoor amphitheater and a community mobile recreation fleet.

In July 1994, the parks system hosted its first international event. The Odyssey Redline UCI World Championship of Bicycle Motocross Racing 1994 attracted 1,900 riders from 34 countries to Waterford Oaks County Park in Waterford.

In late 1994, the Oakland County Parks purchased its 11th park, a 613-acre site in Rose Township. Rose Oaks County Park is on Fish Lake Road, north of Rose Center Road.

**Addison Oaks:** The 794-acre park offers swimming, fishing, boating, camping, disc golf, cross-country skiing and ice skating. Addison's trail system is used for hiking and mountain biking. Primitive and modern campsites with water and electricity are available. New for 1995 are four overnight rental cabins. A conference center hosts business and social gatherings. On West Romeo Road, nine miles north of Rochester. (810) 693-2432.

**Glen Oaks:** The 18-hole, par 70 golf course features a clubhouse with banquet facilities and lounge. Cross-country skiing is available during winter. On Thirteen Mile Road between Middlebelt and Orchard Lake Roads, Farmington Hills. (810) 851-8356.

**Groveland Oaks:** Campers have a choice of 600 campsites with swimming, a waterslide, fishing, boating and the largest playscape in the Oakland County Parks system. New for 1995, four overnight cabins are available for rent. Off Dixie Highway at Grange Hall Road, Holly. (810) 634-9811.

**Independence Oaks:** Activities at this 1,088-acre park include boating and fishing on 68-acre Crooked Lake plus swimming, hiking, cross-country skiing and other winter sports. A nature center offers year-round nature interpretive programs, exhibits and educational outreach programs. The Cohn Amphitheater, Rubach Sensory Herb Garden and paved All Visitor Trail were made possible through the Oakland Parks Foundation. On Sashabaw Road, 2.5 miles north of I-75. Park: (810) 625-0877; Nature Center: (810) 625-6473.



**Lyon Oaks:** This 773-acre park is an environmentally-sensitive site, home to Great Blue Herons and other wildlife. Once developed, Lyon Oaks may be used as an environmental education resource and for hiking, cross-country skiing and picnicking. Bordered by Pontiac Trail, Old Plank Road and I-96 in Lyon Township. (810) 858-0906 for information.

**Orion Oaks:** The scenic 927 acres of Orion Oaks remain undeveloped with the exception of perimeter fencing, small parking areas and a fishing dock off Joslyn Road. Lake Sixteen can be used for boating and fishing. Limited hiking and cross-country ski trails are also available. Bordered by Clarkston, Joslyn and Baldwin Roads in Orion Township. (810) 858-0906 for information.

**Red Oaks:** The Madison Heights Waterpark features a wave-action swimming pool and three-flume waterslide. The 13 Mile Road waterpark offers a deck and lawn area for sunbathing, picnic facilities, a sun shelter, bath house and concessions. A 9-hole, par 31 **Golf Course** is on John R Road, between 12 and 13 Mile Roads. Across John R is a **Sports Village** with indoor and outdoor driving ranges, mini-car track, batting cages, 36 holes of adventure golf and a children's playscape. Waterpark: (810) 585-6990; Golf Course: (810) 541-5030; Sports Village: (810) 548-1857.

**Rose Oaks:** The system's 11th park was acquired in 1994. The 613-acre site features three different ecosystems including approximately 200 acres of wetlands, as well as frontage on two lakes. When developed, the park may be used for hiking, boating, fishing, swimming, picnicking and cross-country skiing. On Fish Lake Road, north of Rose Center Road, Rose Township.

**Springfield Oaks:** The Springfield Oaks complex includes an 18-hole championship golf course (par 71) and a multi-purpose Activities Center for banquets, receptions, shows, 4-H events and indoor sports. Two outdoor arenas are used for exhibitions, rodeos and special events. On Andersonville Road in Davisburg. Golf Course: (810) 625-2540; Activity Center: (810) 625-8133.

**Waterford Oaks:** The 154-acre park is home to the commission's administrative offices. Waterford Oaks also offers a **court sport complex** with eight tennis courts, two platform tennis courts, eight sand volleyball courts, shuffleboard, horseshoes courts, picnic shelters and children's play equipment. The park also boasts **Michigan's first wave-action pool** and double waterslide and **Michigan's only refrigerated toboggan run** – "The Fridge" and Lookout Lodge. A bicycle motocross track hosts practices plus local, state and national races. The Activity Center is popular for weddings, receptions, recreation programs, banquets and parties. Classes, such as dog obedience, golf, aerobics and dancing, are also offered. In Waterford on Watkins Lake Road. Activity Center: (810) 858-0913; Waterpark: (810) 858-0918; Court Games Complex: (810) 858-5433; BMX: (810) 858-0915; Refrigerated Toboggan Run: (810) 858-0906.

**White Lake Oaks:** At this 18-hole, par 70 course, facilities include a clubhouse with a pro shop and restaurant. A private room accommodates up to 250 persons for parties. On South Williams Lake Road off M-59, near Pontiac. (810) 698-2700.



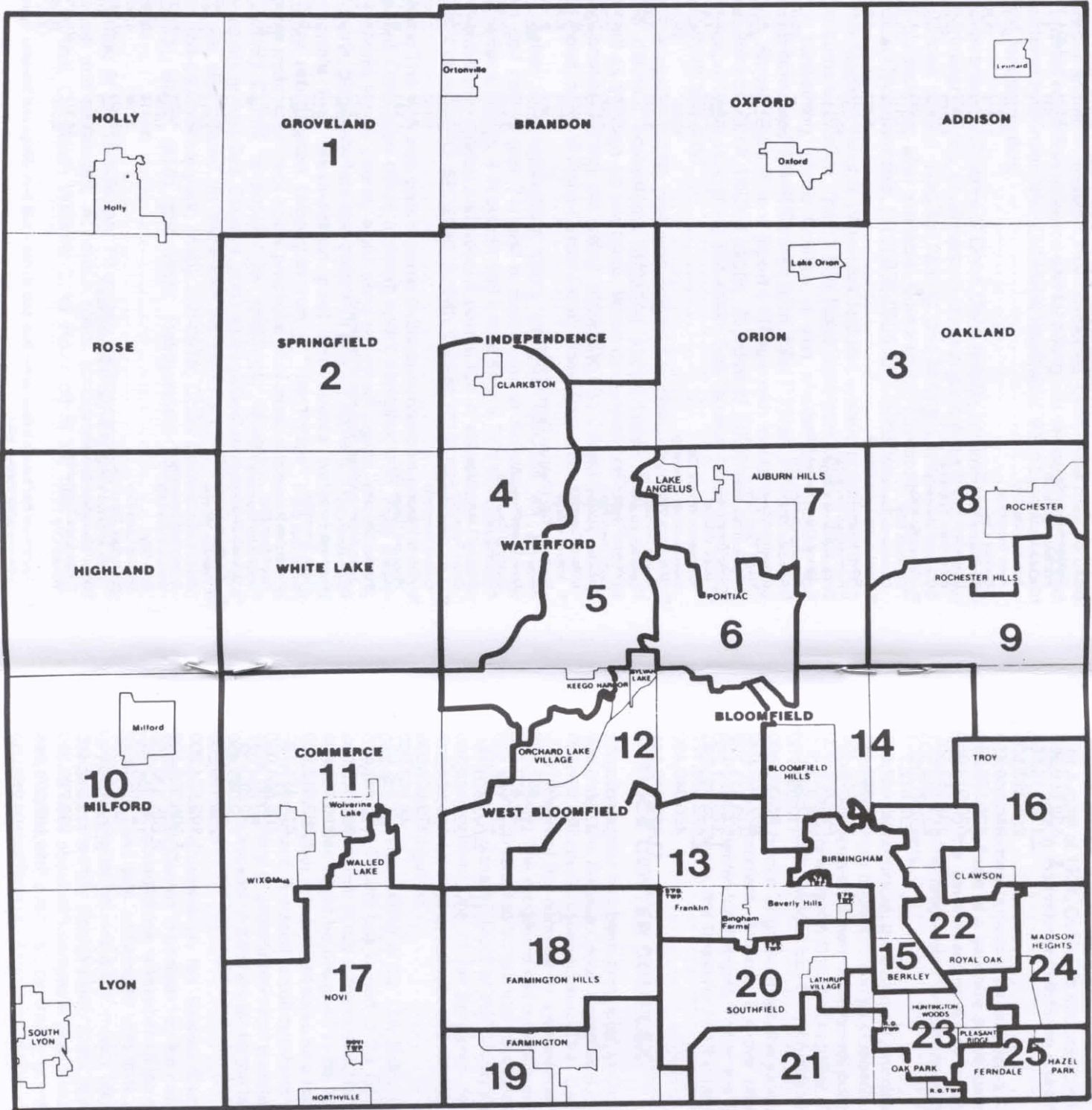
## OAKLAND COUNTY CENSUS

	1970	1980	1990
<b>Oakland County</b> .....	<b>907,871</b>	<b>1,011,793</b>	<b>1,083,592</b>
Addison Township .....	2,431	4,184	4,785
** Leonard Village .....	378	423	357
Auburn Hills City .....	—	—	17,076
Avon Township .....	24,513	40,779	—
Berkley City .....	21,879	18,637	16,960
Birmingham City .....	26,170	21,689	19,997
Bloomfield Hills City .....	3,672	3,985	4,288
Bloomfield Township .....	42,788	42,876	42,473
Brandon Township .....	3,830	8,336	10,799
** Ortonville Village .....	983	1,190	1,252
Clawson City .....	17,617	15,103	13,874
Commerce Township .....	14,556	18,789	22,228
** Wolverine Lake Village .....	4,301	4,968	4,727
Farmington City .....	10,329	11,022	10,132
Farmington Township .....	46,767	—	—
Quakertown Village .....	837	—	—
Wood Creek Farms Village .....	1,090	—	—
Farmington Hills City .....	—	58,056	74,652
Ferndale City .....	30,850	26,227	25,084
Groveland Township .....	2,570	4,114	4,705
Hazel Park City .....	23,784	20,914	20,051
Highland Township .....	8,372	16,958	17,941
Holly Township .....	3,041	3,612	3,257
** Holly Village .....	4,355	4,874	5,595
Huntington Woods City .....	8,536	6,937	6,419
Independence Township .....	16,327	20,569	23,717
** Clarkston Village .....	1,034	968	1,005
Keego Harbor City .....	3,092	3,083	2,932
Lake Angelus City .....	—	—	328
Lathrup Village City .....	4,676	4,639	4,329
Lyon Township .....	4,500	7,078	9,450
Madison Heights City .....	38,599	35,375	32,196
Milford Township .....	2,557	5,146	6,610
** Milford Village .....	4,699	5,041	5,511
Northville City (Oakland County Portion) .....	2,367	2,785	3,367
Novi City .....	9,668	22,525	32,998
Novi Township .....	182	150	150
Oakland Township .....	4,793	7,628	8,227
Oak Park City .....	36,762	31,537	30,462
Orchard Lake Village City .....	1,487	1,798	2,286
Orion Township .....	14,189	19,566	21,019
** Lake Orion Village .....	2,921	2,907	3,057
Oxford Township .....	5,953	7,823	9,004
** Oxford Village .....	2,536	2,746	2,929
Pleasant Ridge City .....	3,989	3,217	2,775
Pontiac City .....	85,279	76,715	71,166
Pontiac Township .....	12,646	15,388	—
Lake Angelus Village (Part also in Waterford) .....	573	210	—
Rochester City .....	7,054	7,203	7,130
Rochester Hills City .....	—	—	61,766
Rose Township .....	2,502	4,465	4,926
Royal Oak City .....	86,238	70,893	65,410
Royal Oak Township .....	6,326	5,784	5,011
Southfield City .....	69,285	75,607	75,728
Southfield Township .....	46	40	18
** Beverly Hills Village .....	13,598	11,598	10,610
** Bingham Farms Village .....	566	529	1,001
** Franklin Village .....	3,311	2,864	2,626
South Lyon City .....	2,675	5,214	5,857
Springfield Township .....	4,388	8,295	9,927
Sylvan Lake City .....	2,219	1,949	1,884
Troy City .....	39,419	67,102	72,884
Walled Lake City .....	3,759	4,748	6,278
Waterford Township .....	59,123	64,250	66,692
Lake Angelus Village (Part also in Pontiac Twp.) .....	573	187	—
West Bloomfield Township .....	28,563	41,962	54,516
White Lake Township .....	14,311	21,870	22,608
Wixom City .....	2,010	6,705	8,550

\*\* Townships that have a Village within their boundaries – add both Village and Township figure together for a true township census total.



# COUNTY COMMISSIONERS DISTRICTS



CITY  
Village  
**TOWNSHIP**

OAKLAND COUNTY  
MICHIGAN

Oakland County Planning Division

## 1994 EQUALIZED VALUATION OF OAKLAND COUNTY

### TOWNSHIPS

Addison . . . . .	\$ 139,668,510
Bloomfield . . . . .	2,179,316,550
Brandon . . . . .	221,463,205
Commerce . . . . .	806,349,450
Groveland . . . . .	121,175,650
Highland . . . . .	339,918,050
Holly . . . . .	136,963,500
Independence . . . . .	640,966,300
Lyon . . . . .	237,812,278
Milford . . . . .	392,947,350
Novi . . . . .	5,698,441
Oakland . . . . .	341,958,400
Orion . . . . .	693,468,900
Oxford . . . . .	269,313,300
Rose . . . . .	112,053,700
Royal Oak . . . . .	46,268,100
Southfield . . . . .	627,502,050
Springfield . . . . .	243,411,780
Waterford . . . . .	1,373,231,200
West Bloomfield . . . . .	2,072,556,177
White Lake . . . . .	490,940,450
<b>TOTAL TOWNSHIPS . . . . .</b>	<b>11,492,983,341</b>

### CITIES

Auburn Hills . . . . .	561,064,015
Berkley . . . . .	286,645,450
Birmingham . . . . .	975,050,500
Bloomfield Hills . . . . .	521,696,100
Clarkston . . . . .	27,485,350
Clawson . . . . .	249,408,900
Farmington . . . . .	274,155,350
Farmington Hills . . . . .	2,593,603,150
Ferndale . . . . .	322,150,350
Hazel Park . . . . .	185,971,900
Huntington Woods . . . . .	173,638,050
Keego Harbor . . . . .	48,868,000
Lake Angelus . . . . .	31,680,250
Lathrup Village . . . . .	112,767,650
Madison Heights . . . . .	783,512,700
Northville . . . . .	110,468,800
Novi . . . . .	1,363,812,800
Oak Park . . . . .	413,471,190
Orchard Lake . . . . .	186,664,050
Pleasant Ridge . . . . .	69,664,024
Pontiac . . . . .	730,085,450
Rochester . . . . .	239,129,200
Rochester Hills . . . . .	1,892,574,200
Royal Oak . . . . .	1,306,305,400
Southfield . . . . .	2,295,330,750
South Lyon . . . . .	124,486,500
Sylvan Lake . . . . .	55,155,350
Troy . . . . .	3,308,095,110
Walled Lake . . . . .	115,613,450
Wixom . . . . .	328,722,300
<b>TOTAL CITIES . . . . .</b>	<b>19,687,276,289</b>
<b>TOTAL COUNTY . . . . .</b>	<b>31,180,259,630</b>



---

## **OAKLAND COUNTY GOVERNMENT**

In August of 1974, Oakland's citizens voted to create the first unified form of county government in the history of Michigan. Less than 60 such governments exist across the nation.

The government is headed by an elected County Executive, whose responsibilities are similar to those of a governor or the mayor of a large city. The County Executive administers the government on a day to day basis, proposes new programs and revamps existing programs. The executive represents the interests of more than 1 million residents.

Under this structure, the Board of Commissioners performs a role similar to a state legislature or city council. It acts on proposals submitted by the County Executive and makes proposals of its own. Government policy is set by the Board of Commissioners and implemented by the County Executive. The County Executive may veto acts of the Board and the vetoes can be overridden by two-thirds vote of the Board.

The third branch of government, the judiciary, was not changed by the executive form of government. Similarly, the five other offices headed by officials elected countywide remain unchanged. These are the Prosecutor, the Sheriff, the Clerk-Register of Deeds, the Treasurer and the Drain Commissioner.

## **SERVICE CENTER COMPLEX**

Such a center has been developed in Oakland and the Courthouse serves as its focal point. The Service Center Complex is located on a 450-acre site and serves as the hub of county government. The County has been working towards the development of this complex by systematically constructing facilities as needed and funds permit. The complex is laid out in a spacious setting according to a master plan, thus giving direction to an ultimate development which will be functional as well as aesthetically pleasing. Most of the County's departments and institutions presently are housed here. One of the principles designed into the Service Center is the "Community" concept of campus development whereby similar or related functions are grouped together.

At the Service Center is the Law Enforcement – Jail Complex. In designing the Complex, the County has looked to the future in anticipating an expanded role for Sheriff's Department in law enforcement. Nationwide research as to how a jail and its related facilities might be designed to be functional and operationally efficient has resulted in a plan, which might serve as a model for other local agencies who deal in law enforcement. A closed circuit television system for surveillance and security, a crime laboratory to provide technical assistance on a local basis for crime solving, and a communication control center for the law enforcement for the entire county are in the building.

A second Complex on the Service Center grounds, the Oakland Community Mental Health Center, is operated by the county Community Health Services Board. The Center consolidates a number of programs for citizens with developmental disabilities, and was constructed with 60% county money and 40% Federal grant funds. The Center houses a Community Mental Health day program for more than 130 developmentally disabled individuals; in addition, the Counseling and Evaluation Service sees about 425 persons a year. The building is unique in Michigan in having been funded well over half by county government; it also provides space for the administrative offices of Community Mental Health.



The Children's Village also is on the Service Center grounds. It provides shelter, care and treatment services for neglected and delinquent wards of the Court. Situated on fifty acres in the Service Center, it consists of small units which provide an opportunity to deal with individual problems of youth. The Village affords a home-like atmosphere to the troubled children coming to the attention of the Court. It is a model which evokes considerable favorable reaction from visitors and judges from throughout the State and other areas of the country.

Oakland's officials are proud of the County Courthouse Complex and its related facilities. Visitors from other counties, states and nations have found and will continue to find themselves most welcome.

## **OAKLAND COUNTY COMMUNITY MENTAL HEALTH SERVICES**

Some people have serious chronic psychiatric problems that can interfere with their whole life, especially jobs, school and relationships with family, friends or co-workers.

Oakland County's Community Mental Health Services, a division of county government, can help with these problems. There are five major outpatient clinics funded by Community Mental Health for adults and children with emotional troubles. The clinics are staffed with psychologists, psychiatrists and social workers who offer individual and group counseling, and there are outreach offices to make services available to all parts of Oakland County. Community Mental Health also operates case management programs for adults with chronic mental illness.

Fees are on a sliding scale, based on the client's ability to pay, and Community Mental Health clinics are approved for reimbursement by Medicaid, Medicare, and various health insurances. The clinics are part of a \$100 million program directed by the Oakland County Community Mental Health Services Board, whose members are appointed by the County Board of Commissioners, and funding for the program comes primarily from the County and State of Michigan. The total program also includes outpatient diagnostic and counseling services for developmentally disabled people; day programs for developmentally disabled adults, and mentally ill children and adults; various specialized residential treatment programs; respite care for families; and mental health educational services to the public.

Most Community Mental Health programs are open Monday-Friday during day and some evening hours. At night and on weekends and holidays there is an Emergency Service for all Oakland County residents at Common Ground in Royal Oak. Their help is available by phone or on a walk-in basis.

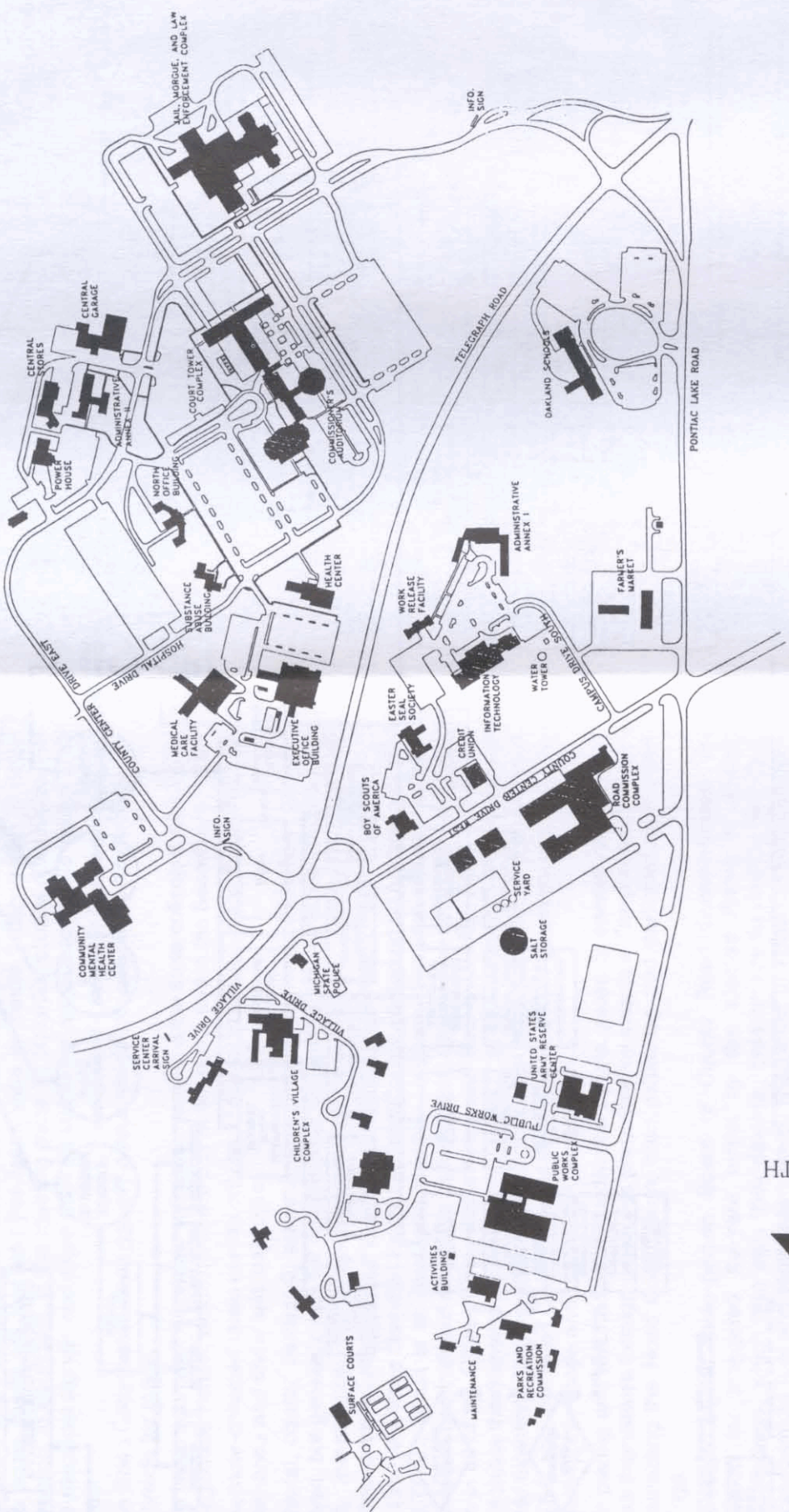
If you or someone you know, an adult or child, may need professional mental health services, we are ready to help any way we can. Community Mental Health programs are supported by your tax dollars, for the benefit of all Oakland County citizens.

For information or referral, just call this central number: (810) 858-1210. At nights and on weekends, emergency help is available by calling (810) 543-2900 (South Oakland) or (810) 338-7450 (Pontiac and North Oakland). Administrative offices are located at 1200 North Telegraph, Pontiac 48341 in the Oakland County Service Center Complex.



# OAKLAND COUNTY SERVICE CENTER

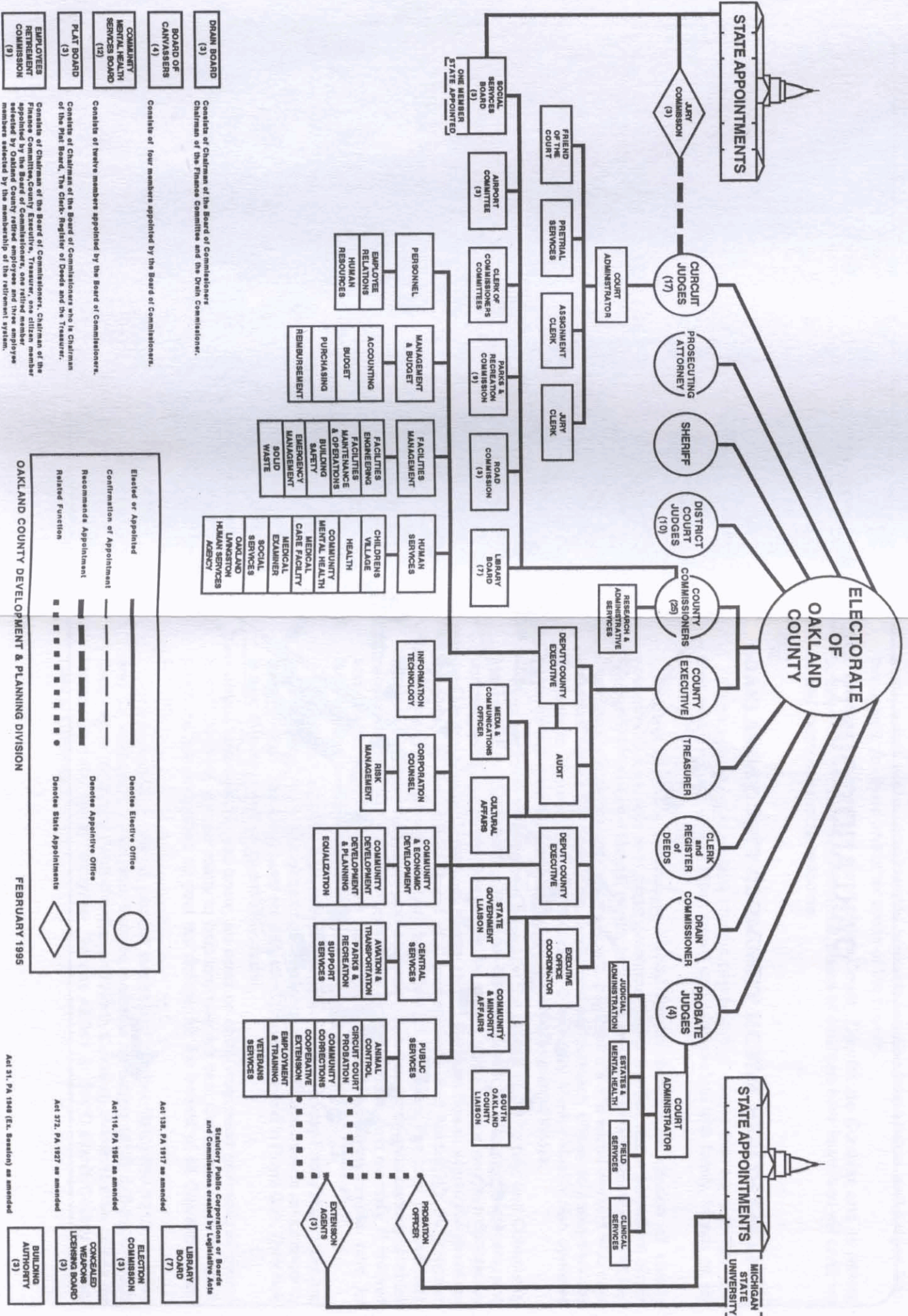
SEWAGE DISPOSAL SITE



NORTH  
↓



# OAKLAND COUNTY GOVERNMENT ORGANIZATIONAL CHART



**OAKLAND COUNTY DEVELOPMENT & PLANNING DIVISION**

**FEBRUARY 1995**

Elected or Appointed: \_\_\_\_\_  
 Confirmation of Appointment: \_\_\_\_\_  
 Recommends Appointment: \_\_\_\_\_  
 Relative Function: \_\_\_\_\_

Denotes Elective Office: ○  
 Denotes Appointive Office: □  
 Denotes State Appointments: ◇



## OAKLAND COUNTY ROADS

More than half of all highways, roads and streets in Oakland County are on the county system, which is under jurisdiction of the Board of Oakland County Road Commissioners.

The Road Commission for Oakland County is now in its 82nd year of service to the people of Oakland County.

Totalling almost 2,500 miles, this system includes all public roads in townships and through streets in most cities and villages. It is the longest county system in Michigan and is second in size only to the state highway system. Its subdivision streets alone (all in townships) make up more than 900 miles.

About half of the system is paved. More than half is within the county's urban area, where some roads are four and five lanes wide to handle heavy traffic. A single intersection, in Southfield, is the meeting place for 100,000 vehicles daily. More than 1,000 electrical signals and more than 82,400 signs are in use on the county road system.

The Road Commission does not levy a countywide tax, nor does anyone levy a tax countywide for roads.

The basic source of Road Commission revenues is the state-collected vehicle fuel and registration taxes, which motorists pay at the pump and to the Secretary of State.

The state-collected taxes are the only source of substantial funding for county road maintenance and snow and ice control.

Federal, county, municipal, township and property owner contributions are also received, but generally only for specific road projects. Such projects include adding lanes, intersection improvements, paving gravel roads, adding new gravel, resurfacing paved roads, passing lanes and other safety improvement projects.

In 1992, the Road Commission for Oakland County embarked on a program called FAST-TRAC, which is an Intelligent Vehicle – Highway Systems effort. The Road Commission has installed electronic traffic signals, operated by computers and video vision in all of the Cities of Troy, Auburn Hills and Rochester Hills. FAST-TRAC also incorporates the Siemens Automotive ALI-SCOUT system which can give verbal and graphic directions to drivers. This system is the first adaptive traffic control system in the USA, and, the Road Commission is the first local unit of government to initiate a program of this scope and magnitude.

For paving and resurfacing of subdivision streets, property owners can specially assess themselves through a process prescribed by state law. The process is begun by contacting the Road Commission, then petitioning and participating in public hearings.

Members of the three-person Board of County Road Commissioners are appointed for staggered six-year terms by the elected Board of County Commissioners, which also sets their salaries. Salaries are funded by the state-collected vehicle fuel and registration taxes. The Board of Road Commissioners is separate from county general government – establishing policies as authorized by state statutes for management of the countywide road system, administering its own budget, and hiring its own full-time Managing Director and staff.

Citizen requests for information are given special attention by the Road Commission's Department of Citizen Services. That office may be reached between 8 a.m. and 4:45 p.m. weekdays by dialing (810) 858-4804.



## **CUSTOMER SERVICE CENTER DEVELOPMENT AND PLANNING DIVISION**

### **WHERE TO GET MAPS, AERIAL PHOTOGRAPHS AND DEVELOPMENT INFORMATION**

If you are looking for property line maps, aerial photography or development data, the Oakland County Development and Planning Division has what you need.

Property line maps of every parcel in Oakland County are updated each year. Aerial photography of the entire County is also available – our most current edition was taken in 1990. The aerials can be superimposed with the current property line maps or enlarged to a scale where detail as fine as telephone poles or parking lot lines are easily visible. Realtors and developers use aerials to locate available vacant land. If you ever need an aerial view of a street, home, place of business or accident site, the Development and Planning Division can provide you with a custom aerial enlargement.

Oakland County Street-Index maps are printed in four quadrants (NE, NW, SE, SW), and include local information and places to see. Special “theme” maps are also available which show such topics as zip codes, school districts, voting precincts, population densities, planned road improvements, sewers, land use, and natural resources, as well as lands already zoned industrial, commercial, office and multi-family but vacant. These are just a few of the many maps available.

Development data and statistics are also available in a complete and user-friendly format. Population, housing, income, employment, land use, master plans, zoning and environmental data are prepared and collected. Staff is available to explain how the land is being used, where the wetlands and sensitive ecological areas are, soil conditions, population trends, ethnic makeup, median or per capita incomes and sewer locations.

School and civic group tours of the office are conducted upon request. We are also available to make presentations on various topics or projects.

So...if you need a map, aerial or some statistics, give us a call at the Development and Planning Division.

Oakland County Development and Planning Division, Executive Office Building, 1200 North Telegraph, Pontiac, MI 48341. Phone (810) 858-0720 or (mapping) (810) 858-0723.



<b>CITIES</b>
---------------

**CITY OF AUBURN HILLS 48326-2753**  
**1827 North Squirrel Road**

FAX (810) 370-9348

COUNCIL .....	James D. McDonald, Mayor	
	Larry G. Douglas, Sr.	Henry V. Knight
	Richard A. Chilkott	Tom McMillin
	Margaret A. Cooper	Kay L. Sendegas
Clerk. ....	(Phone 370-9402) .....	Helen R. Venos
Treasurer. ....		Elaine S. Goebel
Manager .....		Dennis M. McGee
Chief of Police .....		John Dalton
Fire Chief .....		Mark Walterhouse
Assessor. ....		Victor Bennett
Attorney .....		William P. Hampton
Building Services Department Manager. ....		David Thacker
Civil Engineer. ....	Orchard, Hiltz and McCliment, Inc.	
Finance Director .....		Lisa Banes
District Court Judges (52nd-3rd) .....	Ralph Nelson, James P. Sheehy and Robert L. Shipper...Rochester Hills	

**CITY OF BERKLEY 48072-1690**

**3338 Coolidge Highway**

FAX (810) 546-2428

COUNCIL .....	Jerold R. Durst, Mayor	
	Scott C. Anderson	Eugene B. Haire
	Violet Baldwin	Neil T. Jordan
	Ralph O. Conklin	Angus McPherson
Clerk. ....	(Phone 546-2420) .....	Leona M. Garrett
Treasurer .....		Leona M. Garrett
Manager .....		Calvin L. Teague
Public Safety Director. ....		William L. Rechlin
Fire Marshal. ....		James MacDonald
Assessor. ....	Oakland County Equalization Dept.	
Attorney .....		J. Michael Zychowski
Building Inspector .....	City Municipal Services	
Civil Engineer .....	Finkbeiner, Pettis and Strout	
Finance Director .....		Michael P. Tyler
District Court Judge (45A) .....		William R. Sauer

**CITY OF BIRMINGHAM 48012-3001**

**151 Martin Street, P.O. Box 3001**

FAX (810) 644-5614

COMMISSIONERS .....	Dante J. Lanzetta, Jr., Mayor	
	Eleanor A. Siewert	A. Randolph Judd
	Archie Damman	Rex A. Martin
	Robert A. DeLaura	Mike Wooley
Clerk. ....	(Phone 644-1800) .....	Judith A. Benn
Treasurer .....		Thelma K. Shivel
Manager .....		Thomas M. Markus
Chief of Police .....		Edward Ostin
Fire Chief .....		Edward Weber
Assessor .....		Carol Hargan
Attorneys .....		Beier, Howlett, P.C.
Community Development Director. ....		Patricia McCullough
Director of Engineering and Public Services. ....		Dennis Dembiec
Finance Director .....		Sharon Ostin
District Court Judges (48th) .....	Edward Avadenka, Thomas W. Brookover and Gus Cifelli...Bloomfield Hills	

**CITY OF BLOOMFIELD HILLS 48304-2322**  
**45 East Long Lake Road**

FAX (810) 644-4813

COMMISSIONERS . . . . . Frank G. Pollock, Mayor  
 Michael T. Zambricki William Sandy  
 Nancy K. Polk Marilyn Varbedian  
 Clerk . . . . . (Phone 644-1520) . . . . . Charles H. Harmon, Jr.  
 Treasurer . . . . . Joseph Secumski  
 Manager . . . . . Charles H. Harmon, Jr.  
 Director of Public Safety . . . . . David R. Piche'  
 Assessor . . . . . Oakland County Equalization Dept.  
 Attorney . . . . . William P. Hampton  
 Building Inspector . . . . . John Hudock  
 Civil Engineer . . . . . Hubbell, Roth and Clark, Inc.  
 District Court Judges (48th) . . . . . Edward Avadenka, Thomas W. Brookover and  
 Gus Cifelli

**CITY OF THE VILLAGE OF CLARKSTON 48346**  
**375 Depot Road**

FAX (810) 625-3770

COUNCIL . . . . . Sharron Catallo, Mayor  
 James Schultz Douglas Roeser  
 Stephen Arkwright Karen Sanderson  
 William Basinger Stephen Secatch  
 Clerk . . . . . (Phone 625-1559) . . . . . Jeanne Selander Miller  
 Treasurer/Finance Director . . . . . Artemus M. Pappas  
 Manager . . . . . Artemus M. Pappas  
 Chief of Police . . . . . Vacancy  
 Fire Chief . . . . . Roland G. Wilson  
 Assessor . . . . . Oakland County Equalization Dept.  
 Attorney . . . . . Thomas J. Ryan  
 Building Inspector . . . . . Seymour Stone  
 Civil Engineer . . . . . Hubbell, Roth and Clark, Inc.  
 District Court Judge (52nd-2nd) . . . . . Gerald E. McNally

**CITY OF CLAWSON 48017**  
**425 North Main Street**

FAX (810) 435-0515

COUNCIL . . . . . Robert A. Crowner, Mayor  
 Thomas A. Palmer Darrel Middlewood  
 Barbara L. Iseppi William Schmidt  
 Clerk . . . . . (Phone 435-4500) . . . . . Carol A. Kanirie  
 Treasurer . . . . . Kathryn M. Baker  
 Manager . . . . . D. Wayne O'Neal  
 Chief of Police . . . . . Mike Walsh  
 Fire Chief . . . . . Kraig Bouse  
 Assessor . . . . . Oakland County Equalization Dept.  
 Attorney . . . . . Jon H. Kingsepp  
 Building Inspector . . . . . Ronald H. Brenner  
 Finance Director . . . . . John L. Modzinski  
 District Court Judges (52nd-4th) . . . . . William E. Bolle, Dennis C. Drury and  
 Michael A. Martone...Troy



**CITY OF FARMINGTON 48335**  
**23600 Liberty Street**

FAX (810) 473-7261

COUNCIL .....	Arnold T. Campbell, Mayor	
	JoAnne McShane	William S. Hartsock
	Mary L. Bush	Richard L. Tupper
Clerk .....	(Phone 474-5500) .....	Patsy K. Cantrell
Treasurer/Finance Director .....		Patsy K. Cantrell
Manager .....		Frank J. Lauhoff
Director of Public Safety .....		Gary M. Goss
Fire Marshal .....		Joseph Schornack
Assessor .....		John G. Sailer
Attorney .....		John M. Donohue
Building Inspector .....		John Koncsol
Civil Engineer .....		David Mariner
Director of Public Services .....		Kevin Gushman
District Court Judges (47th) .....	Frederick L. Harris and Marla E. Parker	

**CITY OF FARMINGTON HILLS 48336-1165**  
**31555 Eleven Mile Road**

FAX (810) 474-5925

COUNCIL .....	Joanne Smith, Mayor	
	Terry Sever	Lawrence A. Lichtman
	Nancy Bates	Cheryl Oliverio
	Jonathan L. Grant	Aldo Vagnozzi
Clerk .....	(Phone 474-6115) .....	Kathryn A. Dornan
Treasurer/Finance Director .....		Charles D. Rosch
Manager .....		William M. Costick
Chief of Police .....		William J. Dwyer
Fire Chief .....		Richard Marinucci
Assessor .....		Dean Babb
Attorneys .....	Kohl, Secrest, Wardle, Lynch, Clark and Hampton	
Building/Community Development Director .....		Dale Countegan
Building Inspector .....		Thomas Williams
City Engineer .....		William Otwell
Director of Public Services .....		Thomas P. Biasell
District Court Judges (47th) .....	Frederick L. Harris and Marla E. Parker	...Farmington

**CITY OF FERNDAL 48220-1797**  
**300 East Nine Mile Road**

FAX (810) 546-2369

COUNCIL .....	Pamela S. McCullough, Mayor	
	Phillip L. Poole	Charles G. Goedert
	Dennis G. Emmi	Patrick T. Sullivan
Clerk .....	(Phone 546-2384) .....	Vacant
Treasurer/Assessor .....		Dwayne G. McLachlan
Acting Manager .....	(Phone 546-2360) .....	George A. Peek
Chief of Police .....		S. Joseph Sullivan
Fire Chief .....		David L. LaPrairie
Attorneys .....	Brian M. Smith and Associates, P.C.	
Building Inspector .....		Eugene Tutag
Community Development Services Director .....		George A. Peek
Constables .....	William S. Dahlerup and James R. Rentz	
Engineering Technician .....		James Sobetski
Finance Director .....		Jaymarie C. Reddie
District Court Judge (43rd) .....		Douglas J.M. Voss





**CITY OF LAKE ANGELUS 48326**  
**45 Gallogly Road**

COUNCIL .....	Donald P. Althoff, Mayor	
	C. Dale DeLorge	Rosalie Lake
	George Frisch	John Schimpke
Clerk .....	(Phone 335-5396) .....	Nancy L. DeLorge
Treasurer .....		Nancy L. DeLorge
Chief of Police .....		Michael Stefani
Assessor .....		Jacqueline Dauw
Attorney .....		James L. Howlett
Building Inspector .....		William Dinnan, Jr.
District Court Judges (52nd-3rd) .....	Ralph Nelson, James P. Sheehy and Robert L. Shipper...Rochester Hills	

**CITY OF LATHRUP VILLAGE 48076-3489**  
**27400 Southfield Road**

FAX (810) 557-2602

COUNCIL .....	Frank M. Brock, Jr., Mayor	
	Karen Peterson	Joel Hersh
	Bruce E. Copus	Karen Rousseaux
Clerk .....	(Phone 557-2600) .....	Gloria Harris-Ford
Treasurer .....		Mark W. Pollock
Administrator .....		Jeffrey A. Bremer
Chief of Police .....		David Ford
Assessor .....	Oakland County Equalization Dept.	
Attorney .....		James H. McCrory
Civil Engineer .....		Giffels-Webster Engineers, Inc.
Finance Director .....		Jeffrey A. Bremer
District Court Judges (46th) .....	Stephen C. Cooper, Bryan H. Levy and Susan M. Moiseev...Southfield	

**CITY OF MADISON HEIGHTS 48071**  
**300 West Thirteen Mile Road**

FAX (810) 588-8442

COUNCIL .....	George W. Suarez, Mayor	
	Elva L. Mills	Russell C. Pearce
	Margene Johnston	Marilyn R. Russell
	Gary R. McGillivray	Mary Frances Stema
Clerk .....	(Phone 588-1200) .....	Geraldine A. Flack
Treasurer .....		Margaret P. Birach
Manager .....		Jon R. Austin
Chief of Police .....		Ronald Pearce
Fire Chief .....		William Donahue
Assessor .....		Terence M. Haran
Attorney .....		Larry Sherman
Building Inspection Administrator .....		Rudolph Potyok
Community Development Director .....		Timothy Moore
District Court Judge (43rd) .....		Robert J. Turner

**CITY OF NORTHVILLE 48167-1599**  
**215 West Main Street**

FAX (810) 349-9244

COUNCIL ..... Christopher J. Johnson, Mayor  
 Carolann Ayers Paul F. Folino  
 Mark Cryderman Charles Keys

Clerk. .... (Phone 349-1300) ..... Delphine C. Gutowski  
 Treasurer/Assessor ..... Mark Christiansen  
 Manager ..... Gary L. Word  
 Assistant City Manager-Controller ..... Nicolette Bateson  
 Chief of Police ..... Rodney A. Cannon  
 Fire Chief ..... James Allen  
 Attorney ..... James R. Kohl  
 Building Inspector ..... Michael Kruszewski  
 Acting DPW Superintendent ..... Paul Vertrees  
 District Court Judges (35th) ..... Ronald Lowe and John E. MacDonald  
 ...Plymouth

**CITY OF NOVI 48375-3024**  
**45175 W. Ten Mile Road**

FAX (810) 347-0577

COUNCIL ..... Kathleen S. McLallen, Mayor  
 Hugh D. Crawford Tim Pope  
 Carol A. Mason Robert D. Schmid  
 Robert J. Mitzel Joseph G. Toth

Clerk. .... (Phone 347-0460) ..... Geraldine Stipp  
 Treasurer/Finance Director ..... Les Gibson  
 Manager ..... Edward F. Kriewall, Jr.  
 Chief of Police ..... Douglas F. Shaeffer  
 Fire Chief ..... Arthur R. Lenaghan  
 Assessor ..... James Klausmeyer  
 Attorney ..... David M. Fried  
 Building Official ..... Donald Saven  
 District Court Judges (52nd-1st) ..... Michael Batchik, Harold M. Bulgarelli and  
 Brian W. MacKenzie

**CITY OF OAK PARK 48237-2029**  
**13600 Oak Park Boulevard**

FAX (810) 691-7157

COUNCIL ..... Gerald E. Naftaly, Mayor  
 Raymond M. Abrams Arthur Frohlich  
 Louis Demas Michael M. Seligson

Clerk. .... (Phone 691-7400) ..... Sandra K. Gadd  
 Treasurer/Finance Director ..... James Ghedotte  
 Manager ..... Daniel Fitzpatrick  
 Director of Public Safety ..... G. Robert Seifert  
 Fire Chief ..... Karl Woodard  
 Assessor ..... Ronald Sztumerski  
 Attorney ..... Burton R. Shifman  
 Building Inspector ..... Robert DeBerardino  
 Civil Engineer ..... Steve Chickonoski  
 District Court Judges (45B) ..... Marvin F. Frankel and Benjamin J. Friedman











**CITY OF SOUTHFIELD 48076**  
**26000 Evergreen Road**

FAX (810) 354-5342

COUNCIL .....	Donald F. Fracassi, Mayor Steve S. Hurite, President Vicki Goldbaum Peter J. Cristiano Suzanne Goldstein	Sidney Lantz Eli E. Robinson Joan Seymour
Clerk .....	(Phone 354-1000) .....	Mary A. Bonner
Treasurer .....		Roman J. Gronkowski
Administrator .....		Robert R. Block
Chief of Police .....		Joseph Thomas
Fire Chief .....		Robert Ozias
Assessor .....		James Fisher
Attorney .....		John E. Beras
Building Official .....		Wayne Jewell
Design Engineer .....		Wayne Bonus
Finance Director .....		James Scharret
Project Engineer .....		Steve Vandette
District Court Judges (46th) .....	Stephen C. Cooper, Bryan H. Levy and Susan M. Moiseev	

**CITY OF SOUTH LYON 48178**  
**214 West Lake Street**

FAX (810) 486-0049

COUNCIL .....	Jeffrey L. Potter, Mayor Kevin Gratton Tracy Faber	Glenn Kivell Frederick Striks
Clerk .....	(Phone 437-1735) .....	Julie C. Zemke
Treasurer .....		Julie C. Zemke
Manager .....		Rodney L. Cook
Chief of Police .....		Gerald L. Smith
Fire Chief .....		Craig Kaska
Assessor .....		Lori L. Merians
Attorneys .....		Booth, Patterson, P.C.
Building Inspector .....		Joseph Veltri
District Court Judges (52nd-1st) .....	Michael Batchik, Harold M. Bulgarelli and Brian W. MacKenzie...Novi	

**CITY OF SYLVAN LAKE 48320-1637**  
**1820 Inverness**

FAX (810) 682-7721

COUNCIL .....	Marie d'Argy, Mayor Walter Roesler Richard B. Farms	Susan Kissick J. Herbert Larson
Clerk .....	(Phone 682-1440) .....	Dennise Clippert
Treasurer .....		Dennise Clippert
Manager .....		John Martin
Chief of Police .....		Marvin D. McTavish
Fire Chief .....		William Brown
Assessor .....		Oakland County Equalization Dept.
Attorney .....		Paul Bibeau
Building Inspector .....		Richard Kessler
Finance Director .....		John Martin
District Court Judges (48th) .....	Edward Avadenka, Thomas W. Brookover and Gus Cifelli...Bloomfield Hills	

**CITY OF TROY 48084-5285**  
**500 West Big Beaver Road**

FAX (810) 524-0851

COUNCIL ..... Jeanne M. Stine, Mayor  
 Robert M. Gosselin Anthony N. Pallotta  
 Henry W. Allemon Matt Pryor  
 Randall J. Husk John R. Stevens

Clerk. .... (Phone 524-3300) ..... Tamara A. Renshaw  
 Treasurer ..... Nancy Aguinaga  
 Manager ..... Frank Gerstenecker  
 Chief of Police ..... Lawrence Carey  
 Fire Chief ..... William Nelson  
 Assessor ..... Ernest Reschke  
 Attorney ..... Peter Letzmann  
 Building Inspector ..... Gary Shripka  
 City Engineer ..... Neall Schroeder  
 Finance Director ..... John M. Lamerato  
 District Court Judges (52nd-4th) ..... William E. Bolle, Dennis C. Drury and  
 Michael A. Martone

**CITY OF WALLED LAKE 48390-9007**  
**1499 E. West Maple Road, P. O. Box 9007**

FAX (810) 624-1616

COUNCIL ..... William T. Roberts, Mayor  
 Diane Cartter James D. Clifton  
 Linda S. Ackley Helen Foss  
 William I. Burke Heather F.M. Hill

Clerk. .... (Phone 624-4847) ..... Maryanne Cornelius  
 Treasurer/Finance Director ..... Joyce M. Golden  
 Manager ..... Phillip S. Vawter  
 Chief of Police ..... Kenneth Borieo  
 Fire Chief ..... Thomas J. Bennett  
 Assessor ..... Oakland County Equalization Dept.  
 Attorneys ..... Kohl, Secret, Wardle, Lynch, Clark and Hampton  
 Civil Engineer ..... Michael Harvey  
 Department of Public Works Superintendent ..... Ralph Smith  
 Director of Planning and Development ..... Miles A. Davis  
 District Court Judges (52nd-1st) ..... Michael Batchik, Harold M. Bulgarelli and  
 Brian W. MacKenzie...Novi

**CITY OF WIXOM 48393-2567**  
**49045 Pontiac Trail**

FAX (810) 624-0863

COUNCIL ..... Michael McDonald, Mayor  
 John V. Momberg Ted McCoy  
 Mark Clancey Vernon Mitchell  
 Wayne Glessner Susan Verardi

Clerk. .... (Phone 624-4557) ..... June Buck  
 Treasurer/Finance Director ..... Kevin Brady  
 Manager ..... J. Michael Dornan  
 Chief of Police ..... Lawrence H. Holland  
 Fire Chief ..... George Spencer  
 Assessor ..... John G. Sailer  
 Attorney ..... Thomas J. Connelly  
 Building Official ..... Kirk Lavigne  
 Civil Engineer ..... Hubbell, Roth and Clark, Inc.  
 Community Services ..... Geoffrey Middleton  
 Department of Public Services Director ..... Gregory S. McCaffery  
 Department of Public Works Administrator ..... William (Ben) McCusker  
 District Court Judges (52nd-1st) ..... Michael Batchik, Harold M. Bulgarelli and  
 Brian W. MacKenzie...Novi



## TOWNSHIPS

**ADDISON – 1440 Rochester Road, Leonard 48367**  
**Phone 628-3317 or 628-5409 FAX (810) 628-2207**

Supervisor .....	A. Robert Koski
Clerk .....	Mary Ann Thompson
Treasurer .....	Ray E. Terry
Trustees .....	Joseph Beattie
	Sandra Campbell
	Patricia Eisenhardt
	John L. Leonard
Assessor .....	Heidi Cunningham
Attorney .....	L. Nicholas Treinen
Building Inspector .....	John Elsarelli
Civil Engineer .....	JCK and Associates, Inc.
District Court Judges (52nd-3rd) .....	Ralph Nelson, James P. Sheehy and Robert L. Shipper...Rochester Hills

• **BLOOMFIELD – 4200 Telegraph Road, P.O. Box 489,**  
**Bloomfield Hills 48303-0489 Phone 433-7702 FAX (810) 433-7714**

Supervisor .....	Fred Korzon
Clerk .....	Wilma S. Cotton
Treasurer .....	Sam Arslanian
Trustees .....	Joseph Genovesi
	Robert A. Reid
	Jerry J. Tobias
	William R. Yaw, Jr.
Assessor .....	Richard B. Farms
Attorney .....	William P. Hampton
Building Official .....	Christopher Best
Civil Engineer .....	Wayne Domine
District Court Judges (48th) .....	Edward Avadenka, Thomas W. Brookover and Gus Cifelli...Bloomfield Hills

\* **BRANDON – 395 Mill Street, P.O. Box 429, Ortonville 48462**  
**Phone 627-4918 FAX (810) 627-3719**

Supervisor .....	Janet L. Van Tine
Clerk .....	(Phone 627-2851) Sally Jo Swayne
Treasurer .....	(Phone 627-2853) Linda Dula Owen
Trustees .....	Edna Burton
	Ronald Haase
	Nancy Peters
	Sandra Willett
Constables .....	James Graves and Edward LaDouceur
Assessor .....	Landmark Appraisal Company
Attorneys .....	Richard Campbell/Stuart Cooney
Building Inspector .....	Timothy Palulian
Civil Engineer .....	Hubble, Roth and Clark, Inc.
District Court Judge (52nd-2nd) .....	Gerald E. McNally ...Clarkston

\* DESIGNATES CHARTER TOWNSHIPS









● **OAKLAND – 4393 Collins Road, Rochester 48306-1670**  
**Phone 651-4440 FAX (810) 651-7340**

Supervisor . . . . . Joan M. Buser  
 Clerk . . . . . Carolyn L. Phelps  
 Treasurer . . . . . Sharon L. Creps  
 Trustees . . . . . Dominic Abbate  
 . . . . . Marc H. Edwards  
 . . . . . Susan L. Hoffman  
 . . . . . Richard C. Krupp  
 Assessor . . . . . Oakland County Equalization Dept.  
 Attorneys . . . . . Kohl, Secrest, Wardle, Lynch, Clark and Hampton  
 Building Inspector . . . . . William Benoit  
 Civil Engineer . . . . . Professional Engineering Associates, Inc.  
 District Court Judges (52nd-3rd) . . . . . Ralph Nelson, James P. Sheehy and  
 Robert L. Shipper...Rochester Hills

\* **ORION – 2525 Joslyn Road, Lake Orion 48360**  
**Phone 391-0304 FAX (810) 391-9984**

Supervisor . . . . . Doug Brown  
 Clerk . . . . . Marie E. English  
 Treasurer . . . . . Peter Kemp  
 Trustees . . . . . Allen C. Barnes  
 . . . . . Burke Cueny  
 . . . . . James E. Skylis  
 . . . . . Eric S. Wilson  
 Assessor . . . . . John Attwell  
 Attorneys . . . . . Booth, Patterson, P.C.  
 Building Official . . . . . Thomas H. Berger  
 Civil Engineer . . . . . Orchard, Hiltz and McCliment, Inc.  
 District Court Judges (52nd-3rd) . . . . . Ralph Nelson, James P. Sheehy and  
 Robert L. Shipper...Rochester Hills

● **OXFORD – 18 West Burdick Street, P.O. Box 3, Oxford 48371-0003**  
**Phone 628-9787 FAX (810) 628-8139**

Supervisor . . . . . Curtis W. Wright  
 Clerk . . . . . Clara J. Sanderson  
 Treasurer . . . . . Joseph G. Ferrari  
 Trustees . . . . . Shirley Clancy  
 . . . . . Patricia Fitchena  
 . . . . . Bradford C. Jacobsen  
 . . . . . Virginia Pifuras  
 Assessor . . . . . Rebecca M. Bolin  
 Attorney . . . . . Gary R. Rentrop  
 Building Inspector . . . . . Michael C. Darling  
 Civil Engineer . . . . . Rowe Engineering, Inc.  
 District Court Judges (52nd-3rd) . . . . . Ralph Nelson, James P. Sheehy and  
 Robert L. Shipper...Rochester Hills

● DESIGNATES CHARTER TOWNSHIPS



**ROSE - 204 Franklin Street, Holly 48442**  
**Phone 634-7551 or 634-8701**

Supervisor	Michael A. Izzo
Clerk	Dorothy E. Gibbard
Treasurer	Joyce V. Slaughter
Trustees	Clarence O. Gordon Omer J. Welty
Constable	Emile Bair
Assessor	Michael A. Izzo
Attorneys	Booth, Patterson, P.C.
Building Inspector	David Schang
Civil Engineer	Edward A. Salter
District Court Judges (52nd-1st)	Michael Batchik, Harold M. Bulgarelli and Brian W. MacKenzie...Novi

**\* ROYAL OAK - 21075 Wyoming Avenue, Ferndale 48220**  
**Phone 547-9800 FAX (810) 547-1415**

Supervisor	Jerry L. Saddler
Clerk	Gwendolyn W. Turner
Treasurer	Aubrey Dunn
Trustees	David Ford Elizabeth McCloud William Morgan Francine Thurman
Assessor	Oakland County Equalization Dept.
Attorney	H. Wallace Parker
Building Inspector	Frank Luxon
District Court Judges (45B)	Marvin F. Frankel and Benjamin J. Friedman ...Oak Park

**SOUTHFIELD - 18550 W. Thirteen Mile Road, Birmingham 48025**  
**Phone 540-3420 FAX (810) 540-3427**

Supervisor	William A. Hassberger
Clerk	Sharon Tischler
Treasurer	Ellen M. Reed
Trustees	John E. Breen I. Jack Fahlen Raymond Mills Judith A. O'Donnell
Assessor	Kenneth Cheyne
Attorney	Gerald A. Fisher
District Court Judges (46th)	Stephen C. Cooper, Bryan H. Levy and Susan M. Moiseev...Southfield

**• SPRINGFIELD - 650 Broadway, P.O. Box 38, Davisburg 48350-0038**  
**Phone 634-3111 or 625-4802**

Supervisor	Collin W. Walls
Clerk	Nancy Strole
Treasurer	Lois J. Stiles
Trustees	Margaret A. Bloom Elaine Field-Smith Charles M. Oaks Dennis J. Vallad
Assessor	Judy Shirk
Attorney	Gregory K. Need, P.L.L.C.
Building Inspector	Lewis C. Benfield
Civil Engineer	Orchard, Hiltz and McCliment, Inc.
District Court Judge (52nd-2nd)	Gerald E. McNally ...Clarkston

\* DESIGNATES CHARTER TOWNSHIPS









**LEONARD – 28 E. Elmwood, P.O. Box 789, Leonard 48367-0789**  
**Phone 628-7380 FAX (810) 628-7380**

President . . . . . Eugene A. Mallia, Jr.  
 Clerk . . . . . Connie C. Sutherby  
 Treasurer . . . . . Eleanor M. Hamilton  
 Assessor . . . . . Janice Ferguson  
 Attorney . . . . . Phillip G. Adkison, P.L.L.C.  
 District Court Judges (52nd-3rd) . . . . . Ralph Nelson, James P. Sheehy and  
 Robert L. Shipper...Rochester Hills

**MILFORD – 1100 Atlantic, Milford 48381**  
**Phone 684-1515 FAX (810) 684-5502**

President . . . . . R. Roy Danley  
 Clerk . . . . . Deborah S. Frazer  
 Treasurer . . . . . Becky J. Weaver  
 Chief of Police . . . . . John Daly  
 Assessor . . . . . Oakland County Equalization Dept.  
 Attorney . . . . . Thomas J. Connelly  
 Manager . . . . . Arthur Shufflebarger  
 District Court Judges (52nd-1st) . . . . . Michael Batchik, Harold M. Bulgarelli and  
 Brian W. MacKenzie...Novi

**ORTONVILLE – 395 Mill Street, P.O. Box 428, Ortonville 48462-0428**  
**Phone 627-4976 FAX (810) 627-3719**

President . . . . . Susan K. Bess  
 Clerk . . . . . Cynthia VanMegroet  
 Treasurer . . . . . Cynthia VanMegroet  
 Chief of Police . . . . . Oakland County Sheriff's Dept.  
 Assessor . . . . . Cynthia VanMegroet  
 Attorney . . . . . Gerald A. Fisher  
 Manager . . . . . Harvey B. Fletcher  
 District Court Judge (52nd-2nd) . . . . . Gerald E. McNally  
 ...Clarkston

**OXFORD – 22 West Burdick, P.O. Box 94, Oxford 48371**  
**Phone 628-2543 FAX (810) 628-7030**

President . . . . . Dave DeLisle  
 Clerk . . . . . Rose M. Bejma  
 Treasurer . . . . . Linda K. Smith  
 Chief of Police . . . . . Gary Ford  
 Assessor . . . . . Rebecca M. Bolin  
 Attorney . . . . . Robert Bunting  
 Manager . . . . . Darwin D. Parks  
 District Court Judges (52nd-3rd) . . . . . Ralph Nelson, James P. Sheehy and  
 Robert L. Shipper...Rochester Hills

**WOLVERINE LAKE – 425 Glengary Rd., Wolverine Lake 48390-1404**  
**Phone 624-1710 FAX (810) 624-3536**

President . . . . . Ruby Foust  
 Clerk . . . . . Sharon A. Miller  
 Treasurer . . . . . Frances A. Barber  
 Chief of Police . . . . . James Davis  
 Assessor . . . . . Wynn Berry  
 Attorney . . . . . Thomas J. Connelly  
 Administrator . . . . . Vacant  
 District Court Judges (52nd-1st) . . . . . Michael Batchik, Harold M. Bulgarelli and  
 Brian W. MacKenzie...Novi