

2000
OAKLAND COUNTY
DIRECTORY

G. WILLIAM CADDELL
County Clerk/Register of Deeds



In Memory
LYNN D. ALLEN
1925 - 1999

GENREF
JS
261
.02
2000
c.1

*Dedicated to the Memory of
Lynn D. Allen
July 13, 1925 - November 3, 1999*

This book is dedicated to the memory of Lynn D. Allen, former Oakland County Clerk/Register of Deeds.

Lynn was first elected in November 1968 and continued to hold office until his retirement on October 16, 1998. His legacy of unparalleled achievement during a distinguished 30-year career as one of the nation's longest serving and most admired Clerk/Register of Deeds is bolstered by a reputation for innovation and creative thinking that resulted in the Oakland County Clerk's Office installing the first online computerized court system in the world.

Lynn was loved and respected by his employees and colleagues; he was a man who lived life with great passion and faced death with true courage. His passing on November 3, 1999 has created a void in the hearts and lives of all who knew, loved and respected this gentle man for his infinite kindness, boundless generosity and limitless compassion.

COUNTY OF OAKLAND MICHIGAN



**County Seat: Pontiac
1200 N. TELEGRAPH ROAD
PONTIAC, MICHIGAN 48341**

**TOLL FREE (888) 350-0900
www.co.oakland.mi.us**

**L. Brooks Patterson, County Executive
G. William Caddell, County Clerk/Register of Deeds
John P. McCulloch, Chairperson, Board of Commissioners**

INDEX

A

Addison Township, 59
Airport Committee, 19
Airports, 19
Animal Control Division, 19
Arts, Culture & Film, 19,22
Assignment Clerk (*See Circuit Court*), 20
Auburn Hills City, 43
Automation Alley, 31

B

Berkley City, 43
Beverly Hills Village, 71
Bingham Farms Village, 71
Birmingham City, 44
Bloomfield Hills City, 44
Bloomfield Township, 59
Board of Commissioners
Caucus Chairperson, Majority and Minority, 17
Chairperson, Vice-Chairperson, 17,18,20
Commissioners, 17,18,20
Committees, 18
Map, 16
Boards, Commissions & Departments, Oakland County, 19-29
Brandon Township, 60
Building Authority, 19
Building Safety, 19

C

Canvassers, Board of, 19
Census, 40
Central Services (*See Executive, County*), 22
Children's Services (*See Probate Court*), 26
Children's Village, 19
Circuit Court
Administrator, 20
Assignment Clerk, 20
Judges, 13
Cities, 43-57
Clarkston City, 45
Clawson City, 45
Clerk/Register of Deeds, 20
Commerce Township, 60
Community & Economic Development (*See Executive, County*), 22
Community & Home Improvement Division, 20
Community & Minority Affairs, 20,22
Community Mental Health Authority, 20,35
Conservation District, Oakland County, 20
Corporation Counsel, 21,22
County Executive, 22
Court Administrator (*See Circuit Court*), 20
Court of Appeals, 13
Courts
Appeals, 13
Circuit, 13,20
District, 14,15
Probate, 13,26
Supreme Court, 13

D

Deferred Compensation Board, 21
District Court Judges, 14,15
Drain Commissioner, 21

E

Election Commission, 21
Election Division, 20
Election Scheduling Committee,
21
Emergency Management, 21
Employees Retirement
Commission, 22
Equalization Division, 22
Equalized Valuation, 41
Executive, County, 22

F

Facilities Management, 22
Family Independence Agency, 23
Farmington City, 46
Farmington Hills City, 46
Federal Government
Officials, 8
U.S. Congressional Map, 9
U.S. Representatives, 8
U.S. Senators, 8
Ferndale City, 47
Food Service Appeal Board, 23
Franklin Village, 72
Friend of the Court, 23

G

Groveland Township, 61

H

Hazel Park City, 47
Health Department, 23
Highland Township, 61
Historical Commission, 23
History of Oakland County, 31,32
Holly Township, 62
Holly Village, 72
Human Services (*See Executive,
County*), 22
Huntington Woods City, 48
Huron Clinton Metropolitan
Authority, 24

I

Independence Township, 62
Information Technology (*See
Executive, County*), 22

J

Jury Commission, 20,24
Juvenile Court (*See Probate
Court*), 26

K

Keego Harbor City, 48

L

Lake Angelus City, 49
Lake Orion Village, 73
Lathrup Village City, 49
Law Library, 24
Leonard Village, 73
Library Board, 24
Library for the Visually &
Physically Impaired, 24
Lyon Township, 63

M

Madison Heights City, 50
Management & Budget (*See*
Executive, County), 22
Maps
County Commissioners, 16
Oakland County Campus Map,
33
Parks & Recreation, 36
State Representative, 11
State Senate, 10
U.S. Congressional, 9
Media & Communications (*See*
Executive, County), 22
Medical Care Facility, 24
Medical Examiner, 24
Mental Health Services (*See*
Community Mental Health
Authority), 20,35
Milford Township, 63
Milford Village, 74
MSU Extension, Oakland County,
25

N

Northville City, 50
Novi City, 51
Novi Township, 64

O

Oak Park City, 51
Oakland County Campus Map, 33
Oakland County Parks Map, 36
Oakland Township, 64
Orchard Lake Village City, 52
Organizational Chart-County, 34
Orion Township, 65
Ortonville Village, 74
Oxford Township, 65
Oxford Village, 75

P

Parks & Recreation
Commission, 25
Map, 36
Parks, 37,38
Personnel Appeal Board, 25
Personnel (*See Executive, County*), 22
Planning and Economic
Development Services, 26,42
Pleasant Ridge City, 52
Pontiac City, 53
Probate Court
Children's Services, 26
Estates, 26
Judges, 13
Juvenile, 26
Probation Department, Adult, 26
Prosecuting Attorney, 26,27
Public Administrators, 27
Public Services (*See Executive, County*), 22

R

Research Library, 24
Risk Management and Safety,
22,28
Road Commission, 28,39
Rochester City, 53
Rochester Hills City, 54
Rose Township, 66
Royal Oak City, 54
Royal Oak Township, 66

S

Sanitary Code Appeal Board, 28
Schools, Oakland, 25
Service Center Complex, 32
Sheriff, 28
Social Services (*See Family Independence Agency*), 23
Solid Waste, 28
South Lyon City, 55
Southfield City, 55
Southfield Township, 67
Springfield Township, 67
State Government
Officials, 8
State Representative Map, 11
State Representatives, 8
State Senate Map, 10
State Senators, 8
Supreme Court, 13
Sylvan Lake City, 56

T

Townships, 59-69
Transportation Authority, 29
Treasurer, 29
Troy City, 56

V

Veterans, Michigan Trust Fund,
29
Veterans' Services, 29
Villages, 71-75

W

- Walled Lake City, 57
- Waterford Township, 68
- West Bloomfield Township, 68
- White Lake Township, 69
- Wixom City, 57
- Wolverine Lake Village, 75

FEDERAL OFFICIALS

President of the United States
Vice President

Chief of Staff
Secretary of Agriculture

Secretary of Defense
Secretary of Education

Secretary of Energy
Secretary of Health and Human Services

Secretary of Housing and Urban Development
Secretary of the Interior

Secretary of Labor
Secretary of State

Secretary of the Treasury
Secretary of Transportation

Secretary of Veterans Affairs
Secretary of War

U.S. Attorney General
U.S. District Court

U.S. District Court
U.S. District Court

U.S. District Court
U.S. District Court

U.S. District Court
U.S. District Court

U.S. District Court
U.S. District Court

STATE OFFICIALS

Governor
Lieutenant Governor

Secretary of State
Attorney General

U.S. District Court
U.S. District Court

STATE REPRESENTATIVES

U.S. District Court
U.S. District Court

U.S. District Court
U.S. District Court

U.S. District Court
U.S. District Court

U.S. District Court
U.S. District Court

U.S. District Court
U.S. District Court

U.S. District Court
U.S. District Court

U.S. District Court
U.S. District Court

U.S. District Court
U.S. District Court

U.S. District Court
U.S. District Court

FEDERAL OFFICIALS

President of the United States Bill Clinton
Vice President Al Gore

Cabinet Members:

Secretary of Agriculture Dan Glickman
Attorney General Janet Reno
Secretary of Commerce William M. Daley
Secretary of Defense William S. Cohen
Secretary of Education Richard W. Riley
Secretary of Energy William Richardson
Secretary of Health and Human Services Donna E. Shalala
Secretary of Housing and Urban Development Andrew M. Cuomo
Secretary of the Interior Bruce Babbitt
Secretary of Labor Alexis M. Herman
Secretary of State Madeleine K. Albright
Secretary of Transportation Rodney E. Slater
Secretary of Treasury Lawrence H. Summers
Secretary of Veterans' Affairs Togo D. West, Jr.

U.S. Senator Spencer Abraham (R)
U.S. Senator Carl Levin (D)

U.S. Representatives:

8th District Debbie Stabenow, Lansing (D)
9th District Dale E. Kildee, Flint (D)
11th District Joe Knollenberg, Bloomfield Hills (R)
12th District Sander Levin, Royal Oak (D)

STATE OFFICIALS

Governor John Engler (R)
Lieutenant Governor Dick Posthumus (R)
Secretary of State Candice S. Miller (R)
State Treasurer Mark Murray
Attorney General Jennifer M. Granholm (D)

STATE SENATORS

P.O. Box 30036, State Capitol, Lansing, MI 48909-7536

13th District Shirley Johnson, Royal Oak (R)
14th District Gary Peters, Bloomfield Township (D)
15th District Bill Bullard, Jr., Highland (R)
16th District Mat J. Dunaskiss, Lake Orion (R)
28th District John D. Cherry, Jr., Clio (D)

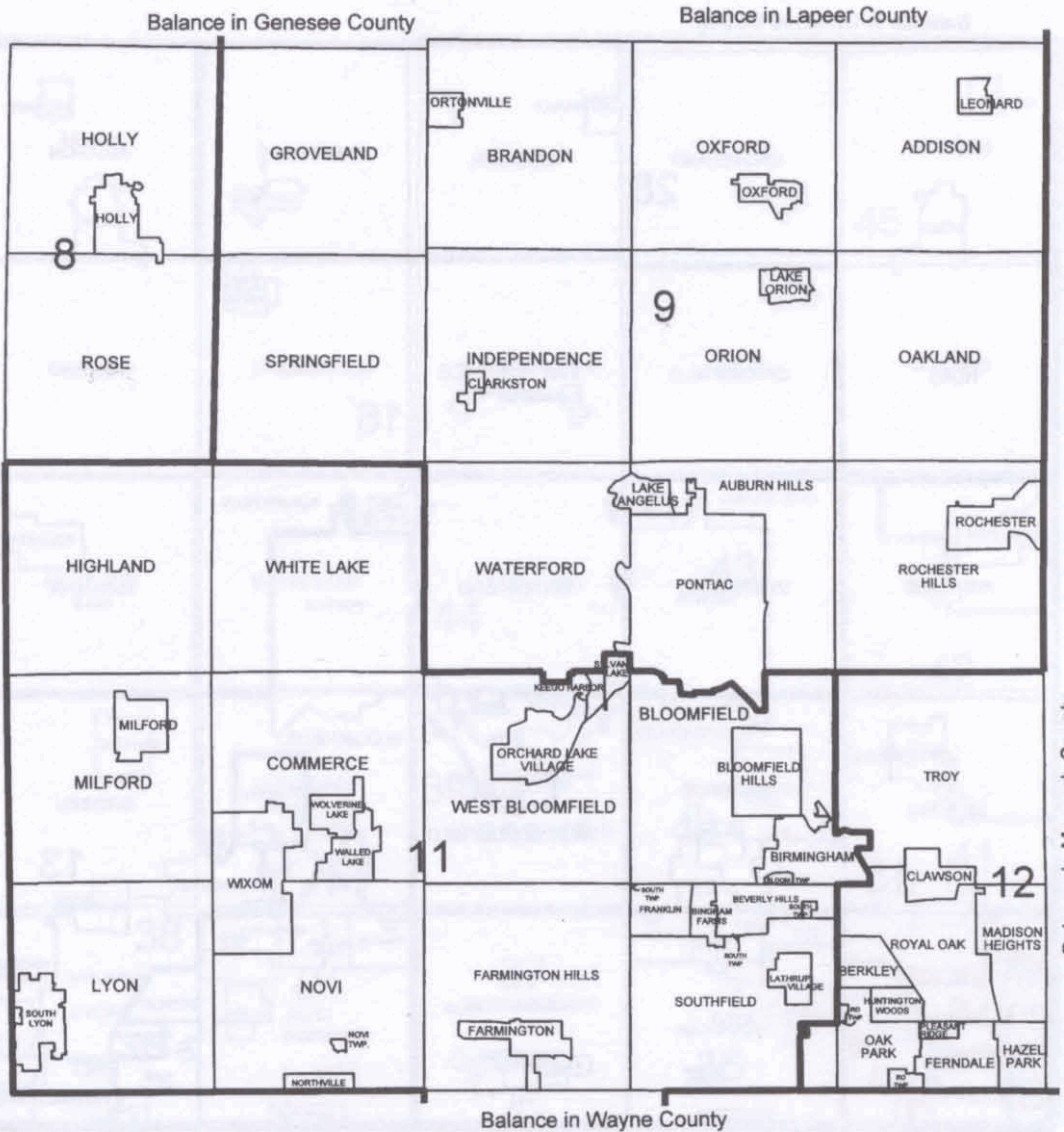
STATE REPRESENTATIVES

P.O. Box 30014, State Capitol, Lansing, MI 48909-7514

34th District David T. Woodward, Madison Heights (D)
35th District Gilda Z. Jacobs, Huntington Woods (D)
36th District Nancy L. Quarles, Southfield (D)
37th District Andrew Raczkowski, Farmington Hills (R)
38th District Nancy C. Cassis, Novi (R)
39th District Marc Shulman, West Bloomfield (R)
40th District Patricia A.K. Godchaux, Birmingham (R)
41st District John G. Pappageorge, Troy (R)
42nd District Robert Gosselin, Troy (R)
43rd District Hubert Price, Jr., Pontiac (D)
44th District Mike Kowall, White Lake (R)
45th District Michael D. Bishop, Rochester (R)
46th District Ruth A. Johnson, Holly (R)

U.S. CONGRESSIONAL DISTRICTS

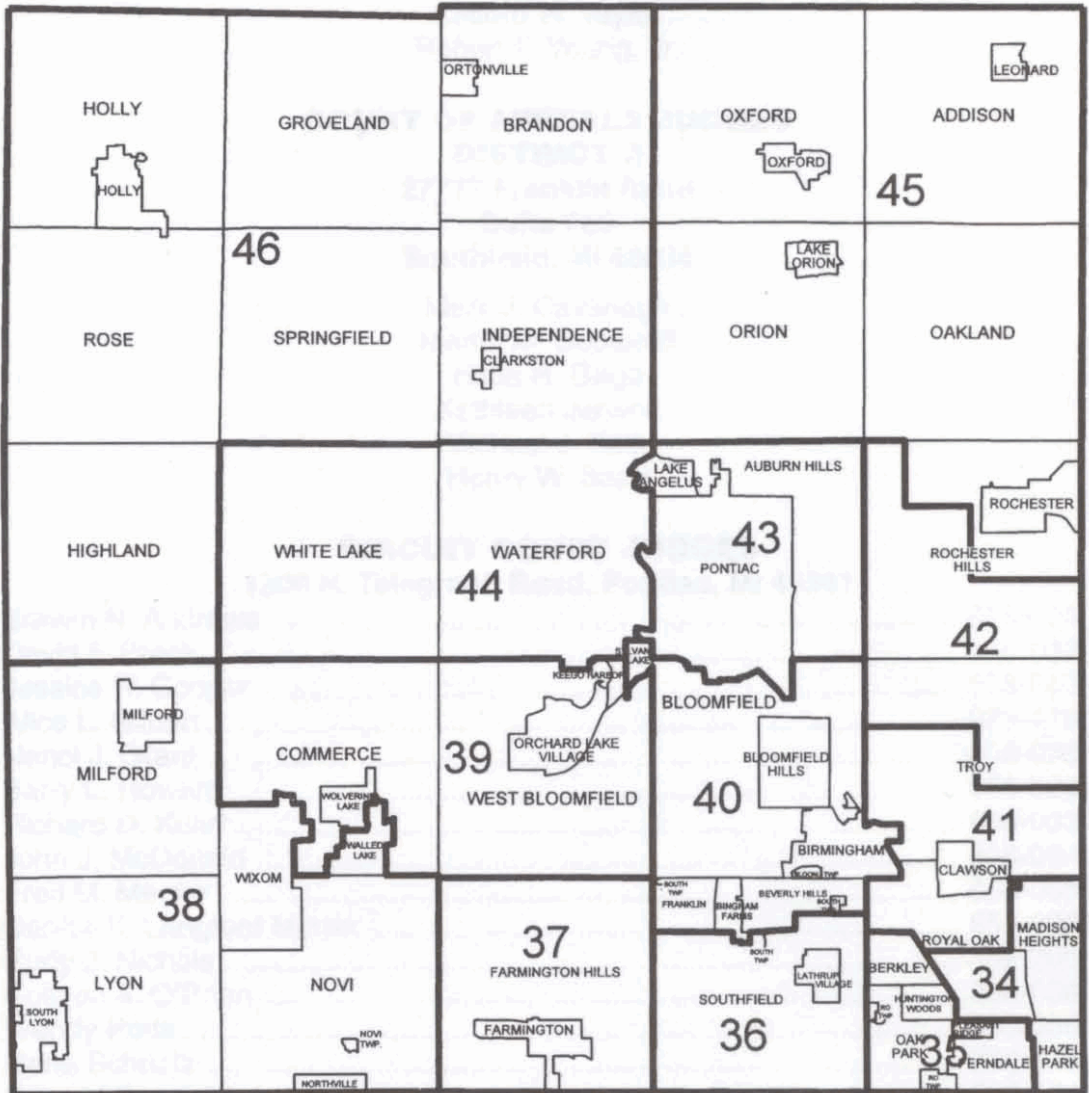
Balance in Livingston County (part)



Balance in Macomb County

OAKLAND COUNTY, MICHIGAN
 PROVIDED BY OAKLAND COUNTY
 PLANNING AND ECONOMIC DEVELOPMENT SERVICES
 ©1995, Oakland County

STATE REPRESENTATIVE DISTRICTS



OAKLAND COUNTY, MICHIGAN
 PROVIDED BY OAKLAND COUNTY
 PLANNING AND ECONOMIC DEVELOPMENT SERVICES
 ©1995, Oakland County

MICHIGAN SUPREME COURT

G. Mennen Williams Building, 525 W. Ottawa,
Second Floor, Lansing, MI 48933

Elizabeth A. Weaver, Chief Justice
Michael F. Cavanagh
Maura D. Corrigan
Marilyn Kelly
Stephen J. Markman
Clifford W. Taylor
Robert P. Young, Jr.

COURT OF APPEALS JUDGES

DISTRICT 2

27777 Franklin Road
Suite 760
Southfield, MI 48034

Mark J. Cavanagh
Martin M. Doctoroff
Hilda R. Gage
Kathleen Jansen
Michael J. Kelly
Henry W. Saad

CIRCUIT COURT JUDGES

1200 N. Telegraph Road, Pontiac, MI 48341

Steven N. Andrews	858-0360
David F. Breck	858-0335
Jessica R. Cooper	858-0337
Alice L. Gilbert	975-4250
Nanci J. Grant	858-0358
Barry L. Howard	858-5284
Richard D. Kuhn	858-0332
John J. McDonald	858-0342
Fred M. Mester	858-0355
Denise K. Langford Morris	858-0363
Rudy J. Nichols	452-2000
Colleen A. O'Brien	858-0368
Wendy Potts	858-0365
Gene Schnelz	858-5280
Edward Sosnick	858-0340
Deborah G. Tyner	452-2005
Joan E. Young	858-5282

PROBATE COURT JUDGES

1200 N. Telegraph Road, Pontiac, MI 48341

ESTATES FAX (248) 452-2016

Barry M. Grant	FAX (248) 975-9780	858-0286
Linda S. Hallmark	FAX (248) 452-5194	858-0289
Eugene Arthur Moore	FAX (248) 452-9398	858-0250
Sandra G. Silver	FAX (248) 858-1506	858-0240

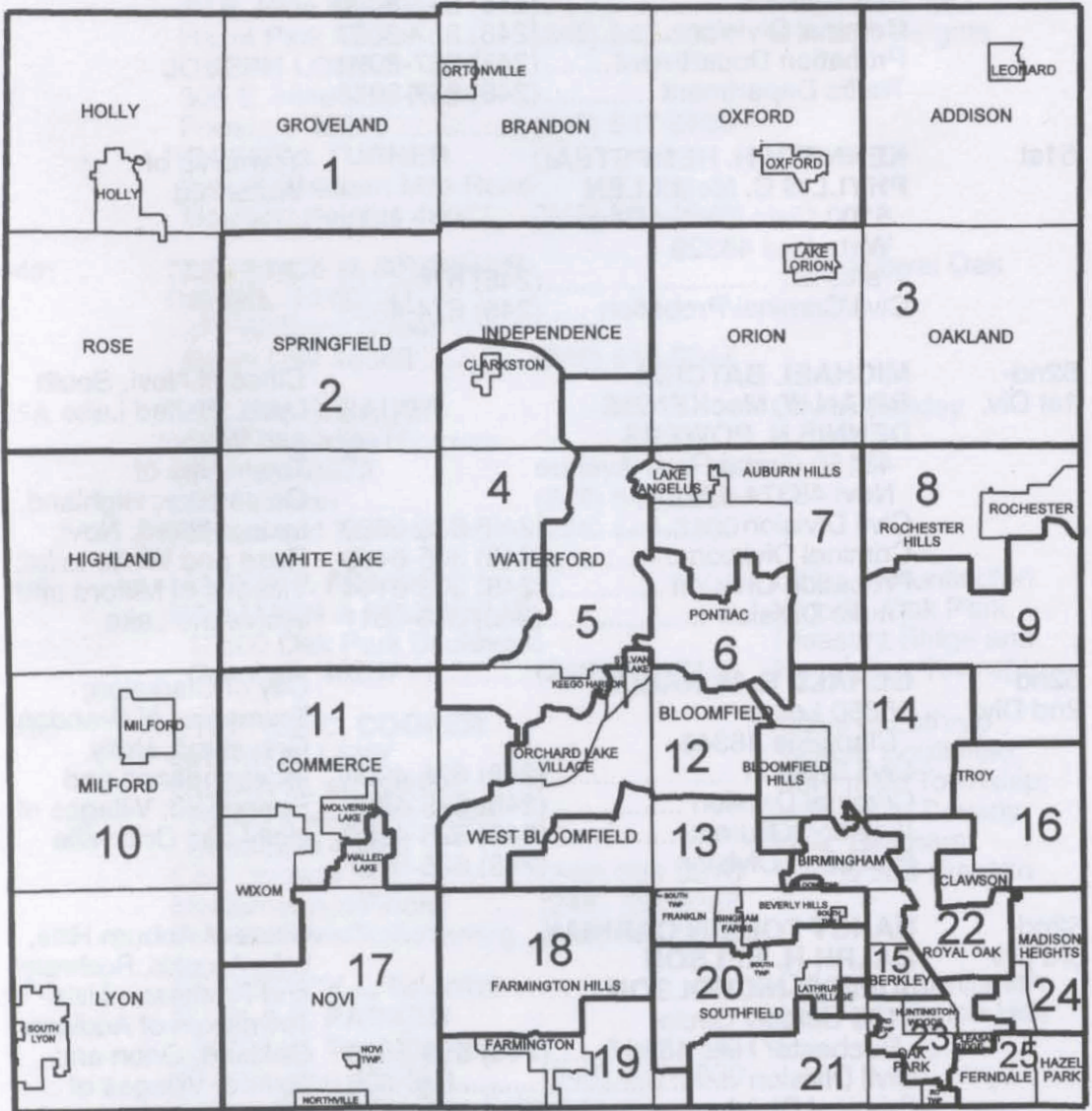
DISTRICT COURT JUDGES, OAKLAND COUNTY, MICHIGAN

District	Name and Address	Telephone	Geographical Area	
35th	RONALD W. LOWE JOHN E. MacDONALD 660 Plymouth Road Plymouth 48170-1891	(734) 459-4740	Oakland County portion of Northville City	
43rd	KEITH P. HUNT 43 E. Nine Mile Road Hazel Park 48030	(248) 547-3034	Cities of Ferndale, Hazel Park and Madison Heights	
	JOSEPH LONGO 305 E. Nine Mile Road Ferndale 48220	(248) 547-8700		
	ROBERT J. TURNER 200 W. Thirteen Mile Road Madison Heights 48071 ...	(248) 583-1800		
44th	TERRENCE H. BRENNAN DANIEL SAWICKI 211 Williams Street Royal Oak 48068	(248) 546-6347	City of Royal Oak	
45A	WILLIAM R. SAUER 3338 Coolidge Highway Berkley 48072 Civil Division	(248) 544-3301 (248) 544-3300	City of Berkley	
45B	MARVIN F. FRANKEL BENJAMIN J. FRIEDMAN 13600 Oak Park Boulevard Oak Park 48237	(248) 691-7440	Cities of Huntington Woods, Oak Park, Pleasant Ridge and Royal Oak Township	
46th	STEPHEN C. COOPER BRYAN H. LEVY SUSAN M. MOISEEV 26000 Evergreen Road Southfield 48076 Civil Division	(248) 354-9370 (248) 354-9368 (248) 354-9360	Cities of Lathrup Village, Southfield; Southfield Township; Villages of Beverly Hills, Bingham Farms and Franklin	
47th	FREDERICK L. HARRIS MARLA E. PARKER 32795 W. Ten Mile Road Farmington 48336	(248) 477-5630 Automated Traffic Fine Schedule	Cities of Farmington and Farmington Hills	
	(248) 477-9619		
48th	EDWARD AVADENKA GUS CIFELLI KIMBERLY SMALL 4280 Telegraph Road P.O. Box 3200 Bloomfield Hills 48302-3200	(248) 647-1141 TTY	(248) 433-9301	Cities of Birmingham, Bloomfield Hills, Keego Harbor, Orchard Lake and Sylvan Lake; Townships of Bloomfield and West Bloomfield

DISTRICT COURT JUDGES, OAKLAND COUNTY, MICHIGAN

District	Name and Address	Telephone	Geographical Area
50th	LEO BOWMAN CHRISTOPHER C. BROWN PRESTON G. THOMAS WILLIAM WATERMAN 70 N. Saginaw Street Pontiac 48342	Civil Division (248) 857-8090 Criminal Division (248) 857-8027 Probation Department (248) 857-8091 Traffic Department (248) 857-8078	City of Pontiac
51st	KENNETH H. HEMPSTEAD PHYLLIS C. McMILLEN 5100 Civic Center Drive Waterford 48329	Traffic (248) 674-4773 Civil/Criminal/Probation (248) 674-4655	Township of Waterford
52nd-1st Div.	MICHAEL BATCHIK BRIAN W. MacKENZIE DENNIS N. POWERS 48150 Grand River Avenue Novi 48374-1222	Civil Division (248) 305-6080 Criminal Division (248) 305-6460 Probation Division (248) 305-6144 Traffic Division (248) 305-6511	Cities of Novi, South Lyon, Walled Lake and Wixom; Townships of Commerce, Highland, Lyon, Milford, Novi, Rose and White Lake; Villages of Milford and Wolverine Lake
52nd-2nd Div.	GERALD E. McNALLY 5850 Lorac Clarkston 48346	Civil Division (248) 625-4994 Criminal Division (248) 625-4888 Violations Bureau (248) 625-4880 Probation Division (248) 625-5957	City of Clarkston; Townships of Brandon, Groveland, Holly, Independence and Springfield; Villages of Holly and Ortonville
52nd-3rd Div.	NANCY TOLWIN CARNIAK RALPH H. NELSON JULIE A. NICHOLSON 135 Barclay Circle Rochester Hills 48307 (248) 853-5553 Civil Division Ext. 302 Criminal Division Ext. 300 Traffic Division Ext. 301 Probation Department (248) 852-8263	Cities of Auburn Hills, Lake Angelus, Rochester and Rochester Hills; Townships of Addison, Oakland, Orion and Oxford; Villages of Lake Orion, Leonard and Oxford
52nd-4th Div.	WILLIAM E. BOLLE DENNIS C. DRURY MICHAEL A. MARTONE 520 West Big Beaver Road Troy 48084	Civil Division (248) 528-0404 Traffic/Criminal Division (248) 528-0400	Cities of Clawson and Troy

COUNTY COMMISSIONER DISTRICTS



OAKLAND COUNTY, MICHIGAN
 PROVIDED BY OAKLAND COUNTY
 PLANNING AND ECONOMIC DEVELOPMENT SERVICES
 ©1995, Oakland County

1999-2000 OAKLAND COUNTY BOARD OF COMMISSIONERS

Commissioners' Office Phone Number: (248) 858-0100

Name and Address	District Number	
FRAN AMOS (R) 4079 Aquarina Waterford 48329	5	E-mail: amos@oakland.edu or amosf@co.oakland.mi.us Voice & FAX: (248) 673-8394
MICHELLE FRIEDMAN APPEL (D) 10064 Nadine Huntington Woods 48070	23	E-mail: Friedappel@aol.com FAX: (248) 647-8388 Home: (248) 547-0794 Work: (248) 647-8383
DAVID BUCKLEY (R) 1027 Dobson Lane Bloomfield Hills 48304	14	FAX: (248) 299-4144 Work: (248) 299-4188
BRENDA A. CAUSEY-MITCHELL (D) , Caucus Chairperson 27 Miami Road Pontiac 48341	6	E-mail: BCasey@Pontiac.mi.us (248) 338-0171
RONALD COLASANTI (R) 468 South Milford Road Highland 48357	10	FAX: (248) 889-2643 (248) 887-0012
ERIC COLEMAN (D) 18141 Westhampton Southfield 48075	21	E-mail: colemane@co.oakland.mi.us (248) 569-4599
NANCY DINGELDEY (R) 2220 Euna Road Wixom 48393	11	E-mail: dingeldeyn@co.oakland.mi.us Voice & FAX (with notice): (248) 669-5921
SUE ANN DOUGLAS (R) 1228 Main Street Rochester 48307	8	E-mail: douglas@ees.eesc.com (248) 651-1255
DAVID N. GALLOWAY (R) 1200 N. Telegraph Road Pontiac 48341-0470	2	(248) 858-0100
JOHN P. GARFIELD (R) 1347 Ruby Rochester Hills 48309	9	E-mail: JGarfield@Compuserve.com Home & FAX: (248) 852-7199
VINCENT GREGORY (D) 29501 Red Leaf Drive Southfield 48076	20	E-mail: VGregroy@aol.com (248) 559-1032
DONALD W. JENSEN (R) , Caucus Chairperson 1233 Maryland Boulevard Birmingham 48009	15	E-mail: jensend@co.oakland.mi.us (248) 647-5830
THOMAS A. LAW (R) 6766 Glenway Drive West Bloomfield 48322	13	(248) 855-2505
JOHN P. McCULLOCH (R) , Chairperson 1609 Cedar Hill Drive Royal Oak 48067	22	(248) 398-7527
RUEL E. McPHERSON (D) 23439 Davey Hazel Park 48030	25	E-mail: mcphersonr@co.oakland.mi.us FAX: (248) 545-9161 (248) 545-7061

1999-2000 OAKLAND COUNTY BOARD OF COMMISSIONERS

Name and Address	District Number	
TIM W. MELTON (D) 2285 Snellbrook Auburn Hills 48326	7	E-mail: TimMelton@aol.com Home: (248) 377-3823 Pager: (248) 407-8141 Work: (248) 338-2892
FRANK H. MILLARD, JR. (R) 21 South Main Street Clarkston 48346	4	(248) 620-5650
DAVID L. MOFFITT (R) 32944 Hargrove Court Farmington Hills 48334	18	FAX: (248) 644-0019 Work: (248) 644-0880 Home: (248) 538-0880
LAWRENCE A. OBRECHT (R), Vice-Chairperson 1437 Nakomis Lake Orion 48362	3	FAX: (248) 693-8232 (248) 693-8231
CHARLES E. "Chuck" PALMER (R) 459 John M Clawson 48017	16	FAX: (248) 435-4477 (248) 435-9391
WILLIAM R. PATTERSON (R) 435 Hillcrest Court Oxford 48371-6015	1	FAX: (248) 628-2415 (248) 628-2077
KAY SCHMID (R) 28105 Summit Drive Novi 48377	17	FAX: (248) 349-1404 (248) 349-0099
TERRY SEVER (R) 34436 Beechwood Drive Farmington Hills 48335	19	(248) 615-9094
GEORGE W. SUAREZ (D) 1735 Moulin Madison Heights 48071	24	(248) 414-7396
SHELLEY GOODMAN TAUB (R) 1959 Shore Hill Drive Bloomfield 48302	12	FAX: (248) 858-8866 (248) 858-8870

OAKLAND COUNTY BOARD OF COMMISSIONERS COMMITTEES FOR 2000

(First named is Chairperson,
second named is Vice-Chairperson,
third named is minority Vice-Chairperson)

Finance	Douglas, Jensen, Coleman, Palmer, Obrecht, Taub, Millard, Amos, Appel, Causey-Mitchell
General Government	Taub, Dingeldey, Melton, Law, Garfield, Patterson, Sever, McPherson, Appel
Personnel	Law, Galloway, Gregory, Moffitt, Colasanti, Buckley, Suarez
Planning and Building	Palmer, Amos, Suarez, Jensen, Schmid, Dingeldey, Colasanti, Sever, Gregory, Melton
Public Services	Millard, Moffitt, McPherson, Schmid, Garfield, Galloway, Patterson, Buckley, Causey-Mitchell, Coleman

BOARDS, COMMISSIONS AND DEPARTMENTS Appointed and Elected

Airport Committee, County

William R. Patterson, Chairperson
 Ronald Colasanti, Vice-Chairperson
 Vincent Gregory, Secretary
 Karl W. Randall, Manager of Aviation
 FAX (248) 666-3341

Oakland County International Airport 666-3900
 6500 Highland Road, Waterford 48327-1649
 Oakland/Troy Airport 288-6100
 2672 Industrial Row, Troy 48084-7036

Animal Control Division

1700 Brown Road, Auburn Hills 48326

Sandra L. Gay, Manager 391-0278
 Lt. Al Arnold, Kennel Supervisor 391-4100
 Lt. Ron Leake, Road Supervisor 391-4102
 Joanie Toole, Office Supervisor 391-0286

Arts, Culture & Film

County Service Center, Bldg. #34 East, 1200 N. Telegraph Road, Pontiac 48341

Nancy Hayden, Director 858-0415
 Oakland County Regional Regranting Agency

Building Authority

Ken Strobel, Chairperson
 Tamara Vanwormer-Tazzia, Vice-Chairperson
 Vacancy, Secretary
 L. Brooks Patterson, County Executive
 C. Hugh Dohany, Treasurer

Information 858-0163

Building Safety 858-0931

Bldg. #95 West, One Public Works Drive, Waterford 48328

Canvassers, Board of

Ann Mitchell
 Georgia Moore
 William Pearson
 C. Elaine Skarritt
 G. William Caddell, Clerk

..... 858-0561

Children's Village

County Service Center, Bldg. #s 63, 65, 71, 73, 77, 81, 83, 85 and 87 West
 1200 N. Telegraph Road, Pontiac 48341

Micheale K. Worrell, Manager 858-1164
 Patricia A. Lahar, Administrator, Intake Treatment Services 858-1162
 Peter D. Balzerini, Administrator, Residential Treatment Services 858-1160
 General Information 858-1150

Circuit Court Administrator - Judicial Assistant

County Service Center, Bldg. #12 East, 1200 N. Telegraph Road, Pontiac 48341

- Kevin M. Oeffner, Court Administrator 858-0349
- Vacancy, Deputy 858-0347
- Vacancy, Assignment Clerk 858-0350
- Becky Young, Jury Clerk 858-0029

***Circuit Court Judges - (See Page 13)**

***Clerk/Register of Deeds**

County Service Center, Bldg. #12 East, 1200 N. Telegraph Road, Pontiac 48341

- G. William Caddell**, Clerk/Register of Deeds 858-0561
- Patrick D. Campbell, Deputy Clerk/Register 858-0560
- Stephanie Schroeder, Chief Deputy Clerk 858-0586
- Clerk's Office
 - Legal Records 858-0582
 - Vital Statistics 858-0571
 - Assumed Names 858-0568
- Sue Payne, Chief Deputy Register 858-0610
- Register of Deeds 858-0605
 - Plat Engineer 858-1447
- Mary Jo Hammond, Director of Elections 858-0563
- Election Division 858-0564

***Commissioners, Board of**

County Service Center, Bldg. #12 East, 1200 N. Telegraph Road, Pontiac 48341

- John P. McCulloch, Chairperson
- Lawrence A. Obrecht, Vice-Chairperson
- G. William Caddell, Clerk
- Suzette Vogt, Chief of Administration 858-0100

Community and Home Improvement Division

County Service Center, Bldg. #34 East, 1200 N. Telegraph Road, Pontiac 48341

- Karry L. Rieth, Manager 858-0493

Community and Minority Affairs

County Service Center, Bldg. #34 East, 1200 N. Telegraph Road, Pontiac 48341

- Richard E. Williams, Jr., Director 858-1047

Community Mental Health Authority

County Service Center, Bldg. #38 East, 1200 N. Telegraph Road, Pontiac 48341

Board Members:

- Fran Amos, Chairperson
- JoAnne Holbert, Vice-Chairperson
- Calvin J. Lippitt, Treasurer
- Clifford Johnson, Secretary
 - Mark Davidoff
 - Jan C. Dolan
 - Steven C. Hill
 - John P. McCulloch
 - Janet Stack-Miller
 - Judith Summers
 - Donald Vainer
 - Joanne Verbanic
 - Vacancy,
 - Executive Director 858-1221
 - Michael O'Hair,
 - Acting Director 858-1209

Conservation District, Oakland County

Robert Long, Chairperson

- 2891 Dixie Highway, Waterford 48328 673-4496

*Elected Officials

Corporation Counsel

County Service Center, Bldg. #12 East, 1200 N. Telegraph Road, Pontiac 48341-0419
Judith K. Cunningham, Corporation Counsel 858-0550
Jody M. McLeod, Deputy Corporation Counsel
Michael D. Blaszczyk, Assistant
Joseph W. Colaianne, Assistant
Jeffrey M. Kaelin, Assistant
William G. Pierson, Assistant
Ahmad M. Roby, Assistant
John F. Ross, Assistant
Jody S. Schaffer, Assistant
Julie L. Secontine, Assistant
Joellen Shortley, Assistant
Donald F. Slavin, Assistant

Deferred Compensation Board

Jeffrey Pardee, Chairperson
Judith K. Cunningham, Vice-Chairperson
Judy Eaton
John P. McCulloch
C. Hugh Dohany, Secretary-Treasurer 858-0623
Douglas J. Williams, Plan Administrator 858-0497

***Drain Commissioner**

Bldg. #95 West, One Public Works Drive, Waterford 48328-1907 (main office)
29142 Stephenson Highway, Madison Heights 48071 (branch)
George W. Kuhn, Drain Commissioner 858-0958
James E. Porter, Chief Deputy
Douglas A. Buchholz, Deputy and Manager,
Operations and Maintenance Division
William E. Klockow, Deputy and Manager,
Engineering and Construction Division
Joseph P. Kozma, Chief Engineer

Election Commission

Linda S. Hallmark, Chairperson
G. William Caddell, Clerk-Secretary
C. Hugh Dohany, Treasurer

Election Scheduling Committee

Sherrie English, Bloomfield Hills School Board Member
Kathryn A. Dornan, Farmington Hills City Clerk
William Brian, Highland Township Clerk
G. William Caddell, Clerk 858-0561

Emergency Management Unit

County Service Center, Bldg. #47 West, 1200 N. Telegraph Road, Pontiac 48341
Gail A. Novak, Chief 858-5300

*Elected Officials

Employees Retirement Commission	858-0623
Dennis L. Murphy, Chairperson	
Margaret Birch, Vice-Chairperson	
Members:	
Sue Ann Douglas	James H. VanLeuven, Jr.
John P. McCulloch	C. Hugh Dohany, Treasurer and Member
Shane Murphy	Douglas J. Williams, Secretary
L. Brooks Patterson	Judith K. Cunningham, Corporation Counsel
Jack Sato Smith	

Equalization Division

Oakland Pointe Office Building, 250 Elizabeth Lake Road, Suite 1000W, Pontiac 48341

Robert O. Vandermark, Manager	858-0775
Phillip Bertolini, Administrator	858-0754
Real Property Information	858-0776
Personal Property Information	858-0757
Tax Descriptions	858-0762

***Executive, County**

County Service Center, Bldg. #34 East, 1200 N. Telegraph Road, Pontiac 48341
(Unless otherwise stated)

L. Brooks Patterson , County Executive	858-0484
Kenneth Rogers, Deputy County Executive	858-0485
Douglas J. Williams, Deputy County Executive	858-0497
Robert J. Daddow, Assistant Deputy County Executive	858-0490
Gerald D. Poisson, Assistant Deputy County Executive	858-2090
Delores Conaway, Coordinator, Executive Office	858-5400
Arts, Culture & Film – Nancy Hayden, Director	858-0415
Central Services – J. David VanderVeen, Director	858-0516
Community and Economic Development – James Bacon, Director	858-0278
Community and Minority Affairs – Richard E. Williams, Jr., Director	858-1047
Corporation Counsel , Bldg. #12 East – Judith K. Cunningham	858-0553
Facilities Management , Bldg. #95 West – David W. Ross, Director	858-0160
Human Services – Thomas J. Gordon, Ph.D., Director	858-1293
Information Technology , Bldg. #49 West – John Mahoney, Director	858-0815
Management and Budget – Jeffrey Pardee, Director	858-0487
Media and Communications Officer – Robert E. Dustman	858-1048
Personnel – Judy Eaton, Director	858-0537
Public Services – Michael W. Zehnder, Director	858-1074
Risk Management , Bldg. #14 East – Stanley Fayne, Director	858-1014
South End Government Liaison – Jean Chamberlain	858-1685
State of MI Government Liaison – Carmen V. Talbot	858-1422

Facilities Management, Department of

Bldg. #95 West, One Public Works Drive, Waterford 48328

David W. Ross, Director	858-0160
Paul N. Hunter, Manager, Facilities Engineering	858-0125
Richard C. Johnston, Manager, Facilities, Maintenance and Operations Division	858-0169

*Elected Officials

Family Independence Agency

Central Administration, 2100 N. Woodward, Suite 200, Bloomfield Hills 48304

Gale R. Colwell, Board Chairwoman

Grenae D. Dudley, Ph.D., Board Vice-Chairwoman

Deborah Korzon, Ph.D., Board Member

Gerald W. Hall, Director 975-4801

Cynthia D. Travis, Deputy Director 975-4810

District I - 1685 Baldwin Road, Pontiac 48340

Billy Holland, Manager 975-5445

District II - 31170 John R, Madison Heights 48071

Richard Holmes, Manager 583-8700

District III - 195 Ladd Road, Walled Lake 48390

Velvet Savage, Manager 669-7600

District IV - 235 N. Saginaw Street, Pontiac 48342

Dorothy Butler, Manager 975-5200

District V - 2100 N. Woodward, Suite 200, Bloomfield Hills 48304

Melvin Kaufman, Manager 975-4820

Food Service Appeal Board

Dr. Val C. Vangieson, Chairperson

Ruel E. McPherson, Vice-Chairperson

Nancy Dingeldey

Rosemarie Rowney

Theodore Spehar

Darlene Waldrop

Ronald L. Grimes, Administrator, Environmental Health Services 858-1320

Friend of the Court

Oakland Pointe Office Building, 230 Elizabeth Lake Road, Pontiac 48341

Joseph G. Salamone 858-0424

Kathleen A. Cox, Chief Assistant

Health Department

County Service Center, Bldg. #36 East, 1200 N. Telegraph Road, Pontiac 48341

27725 Greenfield Road, Southfield 48076-3625

1010 E. West Maple, Walled Lake 48390-3588

Oakland Pointe Office Building, 250 Elizabeth Lake Road, Suite 1520, Pontiac 48341

Rosemarie Rowney, Manager 858-1410

Historical Commission

Jennifer Radcliff, Chairperson

Elsie August

Barbara Randau

Kay Backus

Richard Stamps

Jean Milton

Bradford Wilson

Daniel Prevost

Huron Clinton Metropolitan Authority - Commission

Administrative Offices: 13000 High Ridge Dr., P.O. Box 2001, Brighton, MI 48116-8001
(810) 227-2757 or Toll Free No. 1-800-47-PARKS

www.metroparks.com

Wayne	William E. Kreger, Chairman
Washtenaw	Robert W. Marans, Vice-Chairman
Macomb	Thomas S. Welsh, Treasurer
Oakland	James Clarkson
Governor Appointee	John C. Hertel
Livingston	James Young
Governor Appointee	Vacancy
Frank J. Sudek, Director	

Jury Commission

County Service Center, Bldg. #12 East, 1200 N. Telegraph Road, Pontiac 48341

Becky Young, Jury Clerk	858-0029
Cristina Pappageorge	858-5305
Arlene Schell	858-0593
Flora Whan	858-0378

Library Board

County Service Center, Bldg. #14 East, 1200 N. Telegraph Road, Pontiac 48341

C. Hugh Dohany, Chairperson	
Robert Gaylor, Secretary	
Hon. Steven Andrews	Dr. James Redmond
John Chambers	Robert Tera
Donald W. Jensen	
Phyllis Jose, Director, Library Services	858-0380
Research Library	858-0738
Law Library	858-0012
Library for the Visually and Physically Impaired	858-5050
TDD	452-2247

Medical Care Facility

County Service Center, Bldg. #32 East, 1200 N. Telegraph Road, Pontiac 48341

Shirla F. Kugler, Manager	
Cindy Davis, Assistant Administrator/Admissions	
Candace Otte-Ingram, R.N., Nursing Director	
Information	858-1415

Medical Examiner

County Service Center, Bldg. #28 East, 1200 N. Telegraph Road, Pontiac 48341

Ljubisa J. Dragovic, M.D., Chief Forensic Pathologist/Medical Examiner	858-4046
Robert Gerds, Administrator	858-4045
Kanubhai Virani, M.D., Deputy Chief Forensic Pathologist	858-4044
Philip Predmore, Ph.D., Chief Toxicologist	858-4042
Valery Alexandrov, M.D., Deputy Forensic Pathologist	858-1494
Ruben Ortiz-Reyes, M.D., Deputy Forensic Pathologist	452-9390
Bernardino Pacris, M.D., Deputy Forensic Pathologist	858-1494
Waldemar Palutke, M.D., Deputy Forensic Pathologist	452-9390
Office Information	858-5097

MSU Extension - Oakland County

County Service Center, Bldg. #26 East, 1200 N. Telegraph Road, Pontiac 48341

- Wayne H. Nierman, Ph.D., County Extension Director 858-0885
- Greg Patchan, Horticulture 858-0887
- Lois Thieleke, Home Economics 858-0897
- Sylvia Treitman, Food and Nutrition 858-0904
- Thomas Schneider, 4-H Youth Programs 858-0889
- Carol Lenchek, Gypsy Moth Suppression 858-5198
- Office Information 858-0880
- Garden Center/Hotline 858-0902
- Food & Nutrition Hotline 858-0904
- Larry Davis, Community Development 858-0895
- Larry Ruetz, Groundwater/Freshwater 858-0895
- Joanne Crane, 4-H Youth Agent 858-1509
- Christy Hicks, 4-H Youth Agent 858-0890
- Martha Ferguson, Extension Program Coordinator 858-0900

Oakland Schools 209-2000

Bldg. #41 West, 2100 Pontiac Lake Road, Waterford 48328-2735

- James Redmond, Ph.D., Superintendent
- Rick Simonson, Deputy Superintendent
- Brian Whiston, Legislative Affairs
- Sherry L. McMillan, Director of Human Resources

Parks and Recreation Commission

Bldg. #97 West, 2800 Watkins Lake Road, Waterford 48328

- Pecky D. Lewis, Jr., Chairman
- Richard Skarritt, Vice-Chairman
- Richard D. Kuhn, Jr., Secretary
- Fred Korzon
- George W. Kuhn
- Thomas A. Law
- Ruel McPherson
- Charles E. Palmer
- J. David VanderVeen
- Richard Vogt
- Ralph Richard, Executive Officer 858-0906

Personnel Appeal Board

- George W. Suarez, Chairperson
- Gerald Reeves, Vice-Chairperson
- Anna Devers
- Donald W. Jensen
- Jean Milton

Planning and Economic Development Services

County Service Center, Bldg. #34 East, 1200 N. Telegraph Road, Pontiac 48341

Daniel P. Hunter, Manager 858-0720

Oakland County Economic Development Corporation

- Dennis King, Chairperson
- Rebecca Sorensen, Vice-Chairperson
- Robert Shimmin, Secretary
- Mary Langhauser, Assistant Secretary
- C. Hugh Dohany, Treasurer

Oakland County Business Finance Corporation

- Walter ReebeI, Chairperson
- David Ellis, President
- John O'Brien, Vice-President
- Mary Langhauser, Secretary
- C. Hugh Dohany, Treasurer

Probate Court

County Service Center, Bldg. #12 East, 1200 N. Telegraph Road, Pontiac 48341
 1151 Crooks Road, Entrance C, Troy 48084-7136
 1010 E. West Maple, Walled Lake 48390

- Lisa Symula, Probate Register 858-0282
- Robert L. Bingham, Family Division Administrator/Juvenile Register 858-0950
- William P. Bartlam, Deputy Court Administrator, Judicial Support 858-0977
- John L. Cooperrider, Deputy Court Administrator, Administrative Support .. 858-0256
- Pamela Howitt, Ph.D., Deputy Court Administrator, Court Services 858-0247
- Estates and Mental Health Unit, General Information 858-0260
- Juvenile and Adoption Unit, General Information 858-0112

Probation Department, Adult

County Service Center, Bldg. #26 East, 1200 N. Telegraph Road, Pontiac 48341
 1151 Crooks Road, Entrance A, Troy 48084

Kenneth J. Aud, Area Manager 858-0300

***Prosecuting Attorney**

County Service Center, Bldg. #14 East, 1200 N. Telegraph Road, Pontiac 48341
 2401 East Fourth, Royal Oak 48067

- David G. Gorceyca, Prosecutor 858-0656
- John N. O'Brien II, Chief Deputy Prosecutor 858-0642
- James Halushka, Director of Warrants and Investigations 858-0688
- Ronald Covault, Director of Litigation 858-0671
- Mary Larkin, Director of Administration 858-5558

*Elected Officials

Assistant Prosecutors

David Case, Family Support	858-5622
Lisa Halushka, Juvenile Court	858-0226
Lisa Madzia, Domestic Violence	452-9177
Cheryl Matthews, Child Sexual Assault	858-0699
Jason Pernick, Warrants	858-5533
Paul Stablein, Narcotics	858-5232
Margaret Scott, Auto Theft	452-9103
John Skrzyński, Circuit Court	452-8699
John Slevin, District Court	858-5556
Joyce Todd, Appeals	858-0686
Gary Tunis, Economic Recovery	452-9865

Ben Aloia	Felicia Grimes	Barbara Morrison
Terri Antisdale	Ronda Gross	Karen Mysliwiec
Kathryn Barnes	Jeffrey Hall	Robert Novy
Marc Barron	Scott Hamilton	Shannon O'Brien
Mark Bilkovic	Beth Hand	Roberta Orr
Denise Brainard	Karen Holt	John Pallas
Kimberly Brown	David Hutson	Craig Pavlock
Jeff Buehner	Hala Jarbou	Donna Pendergast
Mark Cardello	Kate Jesudowich	Sheila Phillips
Deborah Carley	Charesa Johnson	John Pietrofesa
Michael Carpenter	Julie Johnston	Cynthia Pike
Kelly Chard	Janice Kabodian	Sara Pope-Starnes
Elizabeth Chiapelli	Todd Kaluzny	Tricia Quigley
Brett Chudler	Deanna Kelley	Thomas Richards
Edward Cibor	Marsha Kosmatka	Matthew Roth
Charles Claus	Elizabeth Kulesz	Rae Ruddy
Robert Cooper	Joseph Lavigne	Michael Salhaney
Jonathan Covault	David Law	Michael Sawicky
Diane D'Agostini	Anica Letica	Sandra Scott
Justin Davis	Shareen Lynch	David Selwocki
Marilyn Day	Steven Lynch	Sydney Smith
Andrea Dean	Mary Mara	Charles Snell
Matthew Feil	Kristina Marticzak	Jennifer Stout
Lynn Fox	Matthew Martin	Richard Strenger
Kenneth Frazee	Thomas McAndrew	John Taylor
Jeanine Gibbs	Clara McCarthy	Gregory Townsend
Elizabeth Giddings	Karen McDonald	Steven Vitale
Robert Giles	Kate McNamara	Paul Walton
Gerald Gleeson	Brewster Moore	Robert Williams
Leonard Gorz	Rob Morad	Robert Zivian
Thomas Grden		

Public Administrators

Stephen C. Albery	Bloomfield Hills 858-2303
Patricia F. Donaldson	Bloomfield Hills 645-2345
Paul E. Dufault	Royal Oak 399-7272
Irving B. Feldman	Southfield 352-1100
Stanley G. Feldman	Southfield 357-3900
Howard T. Linden	Southfield 358-4545
Lynn Beatrice Rose	Birmingham 646-6442
Roger E. Winkelman	Farmington Hills 489-8600

Risk Management and Safety

County Service Center, Bldg. #14 East, 1200 N. Telegraph Road, Pontiac 48341

- Stanley B. Fayne, Director 858-5264
- Workers' Compensation 858-1588
- General Information 858-1014

Road Commission 645-2000

2420 Pontiac Lake Road, Waterford 48328

31001 Lahser Road, Beverly Hills 48025

- Rudy D. Lozano, Chairperson
- Larry P. Crake, Vice-Chairperson
- Richard G. Skarritt, Commissioner
- Brent O. Bair, Managing Director and Secretary/Clerk
- Gerald M. Holmberg, Deputy Managing Director and County Highway Engineer
- Brian Blaesing, Director of Planning and Development
- Patrick Carty, Director of Legal
- Craig B. Bryson, Public Information Officer
- Deborah Mathews, Deputy Secretary/Clerk
- Dennis A. Lockhart, Director of Finance
- Doris Webster, Director of Human Resources
- Tom Blust, Director of Engineering
- David Allyn, Director of Traffic-Safety 858-4802
- James Dunleavy, Director of Highway Maintenance 858-4881
- William McEntee, Director of Permits and Environmental Concerns 858-4835
- Michael Richardson, Director of Citizen Services 858-4804
- Thomas Meszler, Director of Central Operations 858-4798

Sanitary Code Appeal Board

- Nancy Dingeldey, Chairperson
- Ruel E. McPherson, Vice-Chairperson
- Theodore Spehar
- Dr. Val C. Vangieson
- Darlene Waldrop
- Ronald L. Grimes, Administrator,
Environmental Health Services 858-1320

***Sheriff**

County Service Center, Bldg. #10 East, 1201 N. Telegraph Road, Pontiac 48341-1044

- Michael J. Bouchard**, Sheriff 858-5001
- Thomas Quisenberry, Undersheriff 858-5002

Solid Waste

Bldg. #95 West, One Public Works Drive, Waterford 48328

- Martin Seaman, Manager 858-1352

*Elected Officials

Transportation Authority - Public

Members:

- Charles Moss, Chairperson
- C. Hugh Dohany
- Kevin Lapham
- James Merritt
- Patricia Paruch
- Michael Wooley

Alternates:

- Jeffrey J. Barthlow
- Andrew Haliw III
- E. Ann Hiner
- Dr. Dennis Papazian

***Treasurer**

County Service Center, Bldg. #12 East, 1200 N. Telegraph Road, Pontiac 48341

- C. Hugh Dohany, Treasurer** 858-0623
- Patrick M. Dohany, Chief Deputy Treasurer 858-0624
- Arthur Halsey, Chief-Treasurer Accounting 858-0621
- James VanLeuven, Chief-Tax Administration 858-0611
- Keith Sawdon, Investment Administrator 858-5218
- Tax Information 858-0611
 - Deed/Plat Certification
 - Delinquent Tax Information
 - Tax Statement Requests
- Cash and Investments 858-0626

Veterans, Michigan Trust Fund

1151 Crooks Road, Entrance B, Troy 48084-7136

- Southeast Oakland Office 655-1265

Veterans' Services

County Service Center, Bldg. #26 East, 1200 N. Telegraph Road, Pontiac 48341
1010 E. West Maple, Suite 40, Walled Lake 48390

- Diana Calvin, Manager 858-0785
- Belinda Shelton Duggan, Supervisor - Pontiac Office
- John (Jack) Becher, Supervisor, Southeast Oakland Office, Troy 655-1250
- Garth Wootten, Supervisor, West Oakland Office, Walled Lake 926-3368
- Soldier's Relief Commission:
 - Thelma Cannon
 - Dennis L. Haiser
 - Elmer Kretsch

OAKLAND COUNTY GOVERNMENT

In August of 1974, Oakland County citizens voted to create the first unified form of county government in the history of Michigan. Less than 60 such governments exist across the nation.

The government is headed by an elected County Executive, whose responsibilities are similar to those of a governor or the mayor of a large city. The County Executive administers the government on a day to day basis, proposes new programs and revamps existing programs. The executive represents the interests of more than one million residents.

Under this structure, the Board of Commissioners performs a role similar to a state legislature or city council. It acts on proposals submitted by the County Executive and makes proposals of its own. Government policy is set by the Board of Commissioners and implemented by the County Executive. The County Executive may veto acts of the Board and the vetoes can be overridden by two-thirds vote of the Board.

The third branch of government, the judiciary, was not changed by the executive form of government. Similarly, the five other offices headed by officials elected countywide remain unchanged. These are the Prosecutor, the Sheriff, the Clerk/Register of Deeds, the Treasurer, and the Drain Commissioner.

AUTOMATION ALLEY

Not long after Oakland County Executive L. Brooks Patterson identified Automation Alley as the nation's newest technology cluster, he recognized the need for an active government, education and technology company partnership – a consortium that would provide direction, focus and a single-voice for cluster companies.

The Automation Alley Consortium is a dynamic organization of visionary leaders of technology-focused companies, representatives of K-12 and institutions of higher learning and Oakland County government. Consortium members are dedicated to reinforcing their competitive positions in the global marketplace and to nurturing the economic vitality of Oakland County. Member companies invest time, money and staff in the development and promotion of Automation Alley as a first-class technology cluster.

In fact, more than 135 technology companies are already concentrated along a corridor bordering I-75 and I-696. Today, visionary leaders of Automation Alley technology companies are joining the campaign to nurture the cluster's development – working together to effect the powerful competitive advantage that it offers.

Automation Alley has all the elements to support and grow a globally renowned technology cluster. On many quality of life indicators, Automation Alley is on par with or better than those technology clusters considered among the most desirable in the nation – older, more developed technology clusters like California's Silicon Valley and Boston's Route 128.

To reach Automation Alley's web site: www.automationalley.com

SERVICE CENTER COMPLEX

The Oakland County Service Center Complex has been developed for over 40 years and functions as the hub of county government. The majority of the County's departments and institutions are presently located on a 450-acre site in Waterford Township and the City of Pontiac, divided by Telegraph Road. The County has developed the complex by systematically constructing facilities as needed and funding permits. It is laid out in a spacious setting according to a master plan, giving direction to an ultimate development, which will be functional, efficient and aesthetically pleasing. One of the principals designed into the Service Center is its "community" concept of campus development whereby similar or related functions are grouped together.

The 415,000 square foot Courthouse houses Circuit, Family and Probate Courts and offices of the Clerk/Register of Deeds, Treasurer, Prosecutor and Board of Commissioners. Other major facilities located on campus are the Executive Office Building, Sheriff's Law Enforcement-Jail Complex, Medical Examiner Facility, Medical Care Facility, Community Mental Health Central Offices and Children's Village.

The Oakland County Sheriff's Law Enforcement-Jail Complex serves not only as a location to house hundreds of Oakland County's 1,800 prisoners, but contains many key components of the state's largest full-service Sheriff's Department. Its resources are always ready to assist any agency or person in Oakland County.

Children's Village provides shelter, care and treatment services for neglected and delinquent wards of the court and is situated on 50 acres on the Waterford Township side of the Service Center. The Village affords a home-like atmosphere for troubled children coming to the attention of the court and consists of eight (8) separate facilities that provide an opportunity to deal with the individual problems of youths. It is a model complex that evokes significant favorable reaction from visitors and judges throughout the state and country.

The Oakland County Service Center is a model complex and is the core of county government. Oakland's officials are proud of the complex and its related facilities. County citizens and visitors from other counties, states and nations have found and will continue to find themselves most welcome.

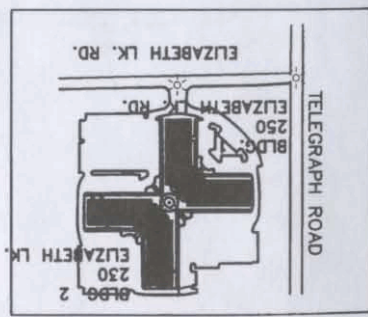
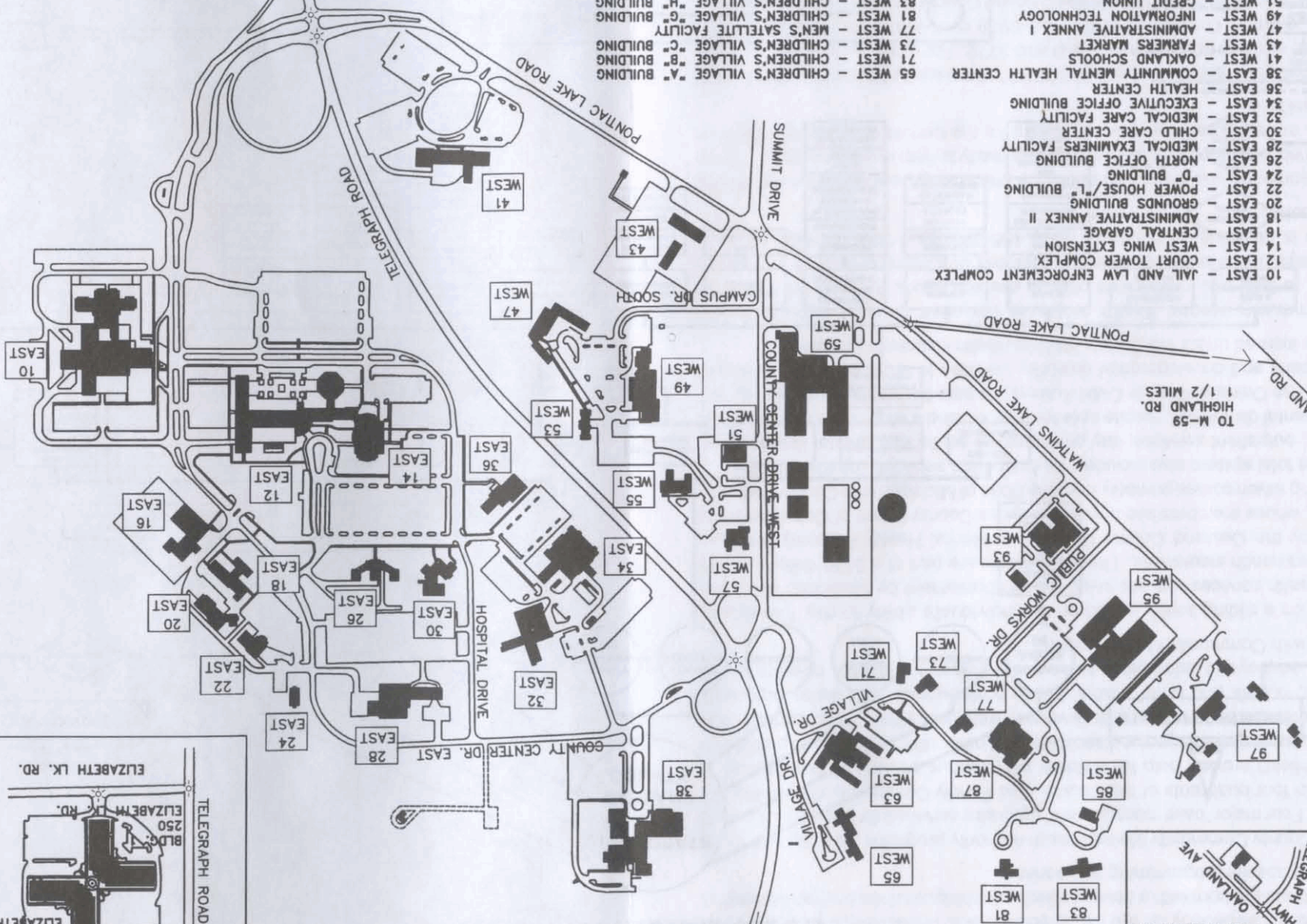
Campus Map

- 10 EAST - JAIL AND LAW ENFORCEMENT COMPLEX
- 12 EAST - COURT TOWER COMPLEX
- 14 EAST - WEST WING EXTENSION
- 16 EAST - CENTRAL GARAGE
- 18 EAST - ADMINISTRATIVE ANNEX II
- 20 EAST - GROUNDS BUILDING
- 22 EAST - POWER HOUSE/"L" BUILDING
- 24 EAST - "O" BUILDING
- 26 EAST - NORTH OFFICE BUILDING
- 28 EAST - MEDICAL EXAMINERS FACILITY
- 30 EAST - CHILD CARE CENTER
- 32 EAST - MEDICAL CARE FACILITY
- 34 EAST - EXECUTIVE OFFICE BUILDING
- 36 EAST - HEALTH CENTER
- 38 EAST - COMMUNITY MENTAL HEALTH CENTER
- 41 WEST - OAKLAND SCHOOLS
- 43 WEST - FARMERS MARKET
- 47 WEST - ADMINISTRATIVE ANNEX I
- 49 WEST - INFORMATION TECHNOLOGY
- 51 WEST - CREDIT UNION
- 53 WEST - WORK RELEASE FACILITY
- 55 WEST - EASTER SEAL SOCIETY
- 57 WEST - BOY SCOUTS OF AMERICA
- 59 WEST - ROAD COMMISSION COMPLEX
- 63 WEST - CHILDREN'S VILLAGE "J" BUILDING
- 65 WEST - CHILDREN'S VILLAGE "A" BUILDING
- 71 WEST - CHILDREN'S VILLAGE "B" BUILDING
- 73 WEST - CHILDREN'S VILLAGE "C" BUILDING
- 77 WEST - MEN'S SATELLITE FACILITY
- 81 WEST - CHILDREN'S VILLAGE "G" BUILDING
- 83 WEST - CHILDREN'S VILLAGE "H" BUILDING
- 85 WEST - KITCHEN
- 87 WEST - CHILDREN'S VILLAGE SCHOOL
- 93 WEST - UNITED STATES ARMY RESERVE CENTER
- 95 WEST - PUBLIC WORKS BUILDING
- 97 WEST - PARKS AND RECREATION COMMISSION

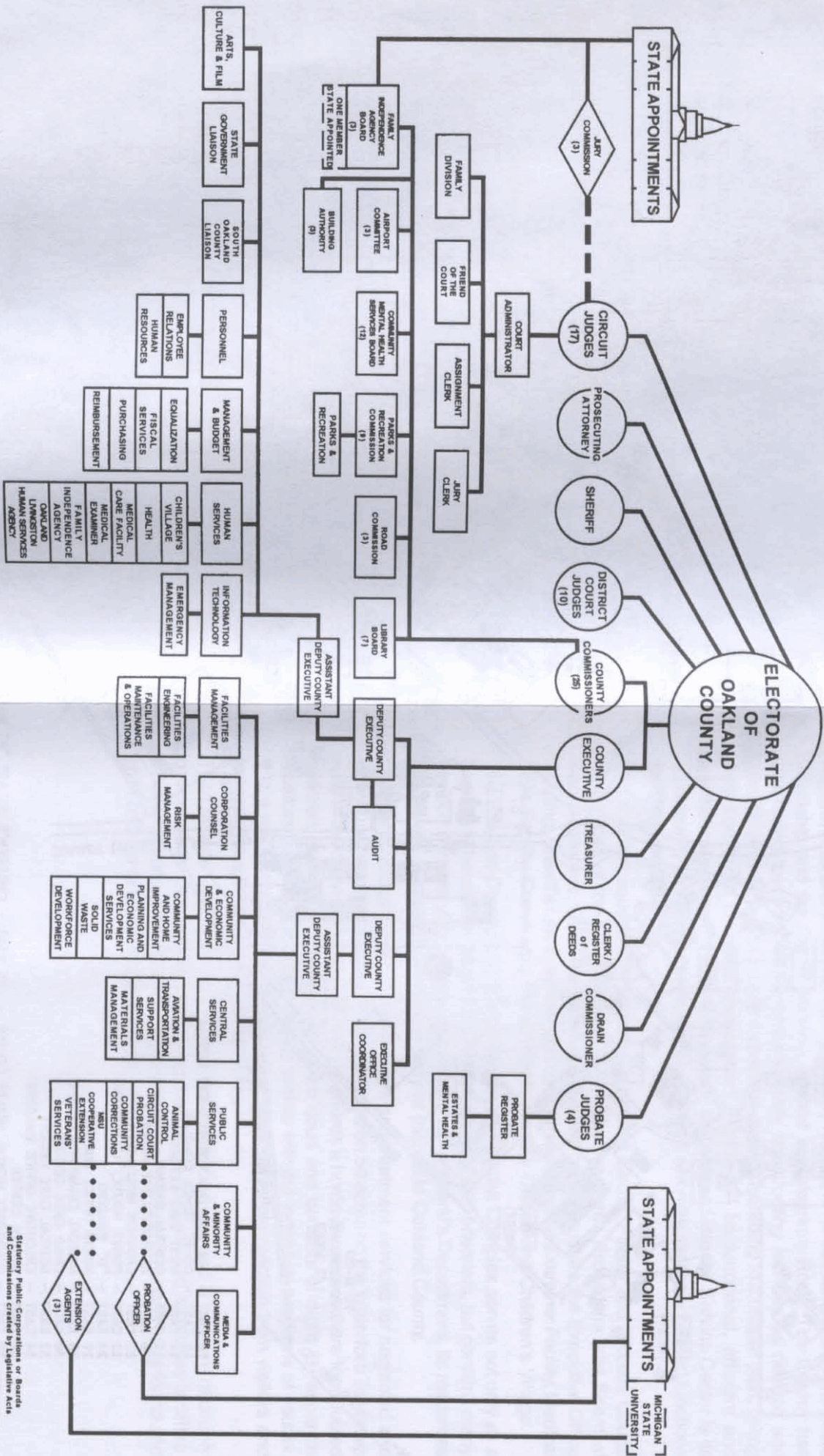
OAKLAND POINT
230-250 ELIZABETH LK. RD.
1 1/2 MILES

TO M-59
HIGHLAND RD.
1 1/2 MILES

TO MATERIALS MANAGEMENT



OAKLAND COUNTY GOVERNMENT ORGANIZATIONAL CHART



DRAIN BOARD (3)
Consists of Chairperson of the Board of Commissioners, Chairperson of the Finance Committee and the Drain Commissioner.

BOARD OF CANVASSERS (4)
Consists of four members appointed by the Board of Commissioners.

PLAT BOARD (3)
Consists of Chairperson of the Board of Commissioners who is Chairperson of the Plat Board, the Clerk, Register of Deeds and the Treasurer.

EMPLOYEES RETIREMENT COMMISSION (2)
Consists of Chairperson of the Board of Commissioners, Chairperson of the Finance Committee, County Executive/Treasurer, one citizen member appointed by the Board of Commissioners, one retired member selected by Oakland County retired employees and three employee members selected by the membership of the retirement system.

OAKLAND COUNTY PLANNING AND ECONOMIC DEVELOPMENT SERVICES

Elected or Appointed:
 Confirmation of Appointment:
 Denotes Elective Office:

 Recommends Appointment:
 Denotes Appointive Office:

 Related Function:
 Denotes State Appointments:

Statutory Public Corporations or Boards and Commissions created by Legislative Acts

Act 138, PA 1917 as amended: LIBRARY BOARD (7)

Act 118, PA 1984 as amended: ELECTION COMMISSION (3)

Act 372, PA 1927 as amended: CONCEALED WEAPONS LICENSING BOARD (3)

Act 31, PA 1948 (Ex. Session) as amended: BUILDING AUTHORITY (3)

OAKLAND COUNTY COMMUNITY MENTAL HEALTH AUTHORITY (OCCMHA)

Some people have serious, persistent psychiatric problems that can interfere with their whole life, especially on the job, in school, or in relationships with family and friends. Others are born with a developmental disability, such as mental retardation, that require special programming and services.

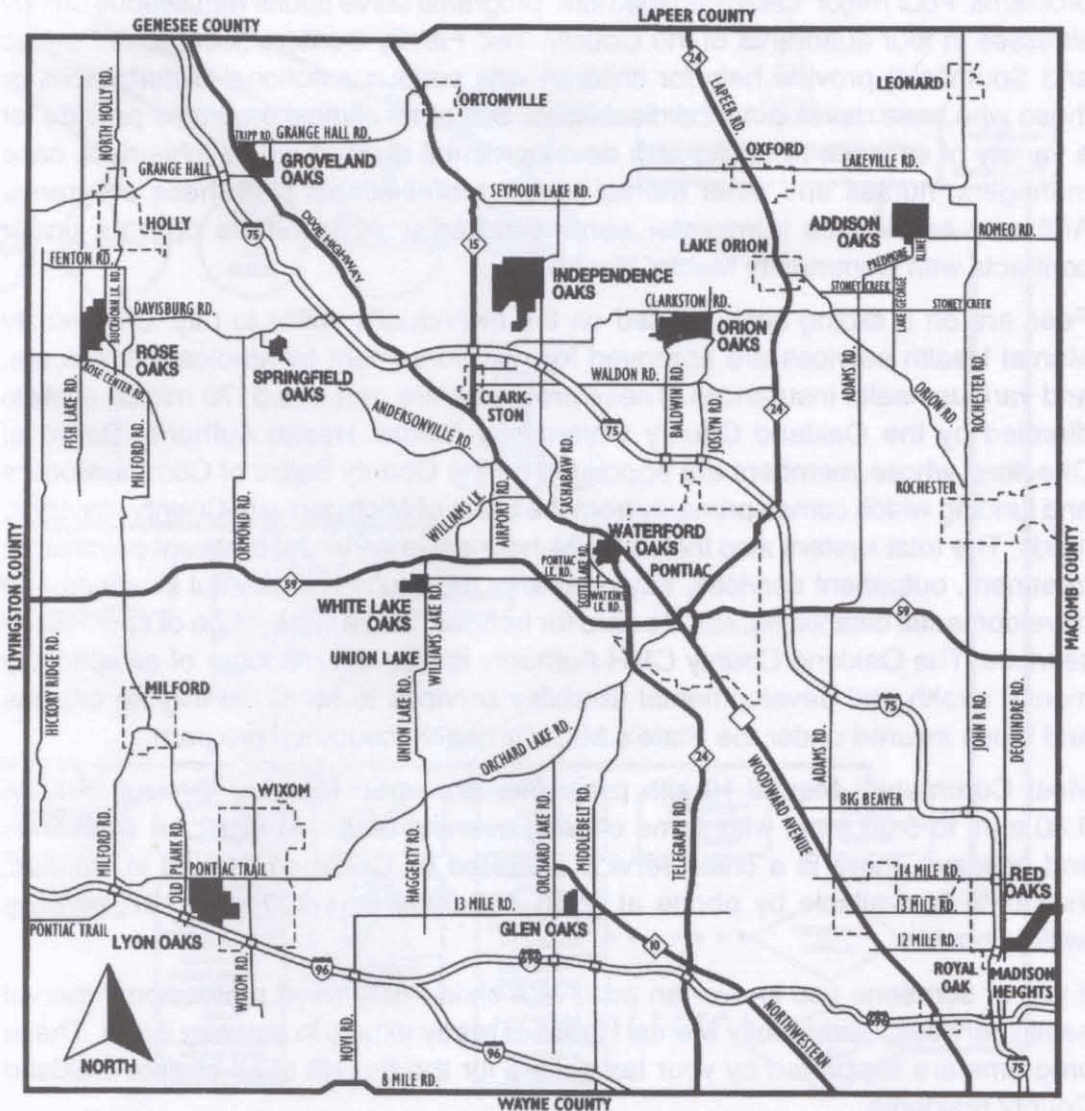
Oakland County Community Mental Health Authority programs can help with these problems. Four major "case management" programs serve adults with serious mental illnesses in four quadrants of the County. Two Family Centers (located in Pontiac and Southfield) provide help for children with serious emotional disturbances or those who have developmental disabilities. Still other clinical programs provide for a variety of services to adults with developmental disabilities. Psychiatrists, case managers, nurses and other mental health professionals staff these programs. Authority employees administer some programs, while others operate under contracts with Community Mental Health.

Fees are on a sliding scale, based on the individual's ability to pay. Community Mental Health services are approved for reimbursement by Medicaid, Medicare, and various health insurances. These programs are part of a \$170 million system directed by the Oakland County Community Mental Health Authority Board of Directors, whose members are appointed by the County Board of Commissioners and funding which comes primarily from the State of Michigan with County matching funds. The total system also includes: 24-hour crisis services, inpatient psychiatric treatment, outpatient services, day programs for adults with mental illnesses and developmental disabilities, respite care for families, and a wide range of specialized services. The Oakland County CMH Authority is also the manager of all specialty mental health and developmental disability services to Medicaid eligible citizens and those insured under the State's MICHild health insurance program.

Most Community Mental Health programs are open Monday through Friday, 8:30 a.m. to 5:00 p.m., with some offering evening hours. At night, on weekends and holidays, there is a crisis service operated by Common Ground in Pontiac; their help is available by phone at (248) 456-0909 or 1-800-231-1127, or on a walk-in basis.

If you or someone you know - an adult or a child - may need professional mental health services, Community Mental Health is ready to help in any way it can. These programs are supported by your tax dollars for the benefit of all eligible Oakland County residents.

For information or referral, just call "ACCESS", Community Mental Health's central intake unit, at (248) 858-1510 or 1-800-810-3772. For crisis service day or night, contact Common Ground at (248) 456-0909 or 1-800-231-1127. OCCMHA administrative offices are located in the Oakland County Service Center complex at 1200 N. Telegraph Road, Building #38 East, Pontiac, MI 48341. Administration main number: (248) 858-1210.



AKLAND
COUNTY PARKS

DISCOVER THE OAKLAND COUNTY PARKS

With preservation of open space a priority, Oakland County Parks strives to enhance quality of life for its 1.5 million annual visitors.

Recreational, leisure and learning experiences are made possible through special events, programs and facilities, supported in part, by a one-quarter mill tax.

Homeowners pay an average of \$18.75 (on a \$150,000 home) to improve, maintain and acquire parks and recreation areas in Oakland County. Voters have supported the Oakland County Parks since its inception in 1966.

Currently, the 11-park system totals more than 6,000 acres. Land is acquired with assistance from state and federal grants. Ten citizens comprise the policy-setting parks commission.

A leader in innovative facilities and programs, the parks system offers two waterparks; The Fridge, Michigan's first refrigerated toboggan run; a year-round, dome-covered driving range; a nature interpretive center; and a community mobile recreation fleet.

In 1999, construction began at Lyon Oaks. An 18-hole golf course, driving range, banquet facilities, hiking trails, picnic areas and more will open in 2001.

Recent improvements include educational exhibits at the Lewis E. Wint Nature Center, restrooms at Springfield Oaks and White Lake Oaks golf courses and a renovated boathouse at Independence Oaks.

For more information, visit the Oakland County Parks website at www.co.oakland.mi.us for discount coupons, maps and more or call 1-888-OCPARKS.

Addison Oaks: The 794-acre park offers swimming, fishing, boating, camping, disc golf, cross-country skiing and mountain bike trails. Primitive, modern and group campsites plus four overnight rental cabins are available. A conference center hosts business and social gatherings. On West Romeo Road, nine miles north of Rochester. (248) 693-2432.

Glen Oaks: The 18-hole, par 70 golf course features a clubhouse with banquet facilities. Cross-country skiing is a winter option. On Thirteen Mile Road between Middlebelt and Orchard Lake Roads, Farmington Hills. (248) 851-8356.

Groveland Oaks: Campers have a choice of 462 campsites, group camping areas plus four overnight cabins with swimming, a waterslide, fishing, boating and more. Off Dixie Highway at Grange Hall Road, Holly. (248) 634-9811.

Independence Oaks: Activities at this 1,088-acre park include boating and fishing on 68-acre Crooked Lake plus swimming, cross-country skiing and nearly 12 miles of trails. The Lewis E. Wint Nature Center offers exhibits and year-round nature programs, the Rubach Sensory Garden, a meditation water garden and Cohn Outdoor Amphitheater. On Sashabaw Road, 2.5 miles north of I-75. Park: (248) 625-0877; Nature Center: (248) 625-6473.

Lyon Oaks: By Spring, 2001, this 1,025-acre park will offer hiking trails, a picnic area, restrooms, an 18-hole golf course, driving range and banquet facilities. Bordered by Pontiac Trail, Old Plank and I-96 in Lyon Township. (248) 858-0906.

Orion Oaks: This scenic 927-acre park offers boating and fishing (wheelchair accessible dock) on Lake Sixteen, nearly 10 miles of trails for hiking, mountain biking and cross-country skiing. Bordered by Clarkston, Joslyn and Baldwin Roads. (248) 858-0906.

Red Oaks: The Madison Heights **Waterpark** features a wave-action pool and giant triple waterslide. A 9-hole, par 31 **Golf Course** is on John R Road, between 12 and 13 Mile Roads. Cross-country skiing is a winter option. Across John R is a **Sports Village** with indoor/outdoor driving ranges, mini-car track, batting cages and 36 holes of adventure golf. Waterpark: (248) 585-6990; Golf Course: (248) 541-5030; Sports Village (248) 548-1857.

Rose Oaks: This 592-acre park includes two large and five small lakes plus hiking trails. On Fish Lake Road, north of Rose Center Road, Rose Township. (248) 858-0906.

Springfield Oaks: This complex includes an 18-hole championship **Golf Course** (par 71) and a multi-purpose **Activity Center** for banquets, receptions and 4-H events plus two outdoor arenas. Cross-country skiing is a winter option at the golf course. On Andersonville Road in Davisburg. Golf Course: (248) 625-2540; Activity Center: (248) 625-8133.

Waterford Oaks: The 154-acre park is home to the commission's administrative offices. The **Waterpark** boasts Michigan's first wave-action pool, a giant double waterslide, group raft ride and children's water playground. The park is also home to "The Fridge" - Michigan's first refrigerated toboggan run. A **BMX track** hosts local, state and national races. The **Activity Center** is popular for weddings, banquets and parties. Classes, such as dog obedience and children's ballet are also offered. The park also offers a **Court Sport Complex** with tennis and sand volleyball courts, shuffleboard, horseshoes and picnic shelters. On Watkins Lake Road, Waterford. (248) 858-0906.

White Lake Oaks: At this 18-hole, par 70 course, facilities include a private room (up to 250) for wedding receptions, business functions and other events. Cross-country skiing is a winter option. On South Williams Lake Road off M-59, near Pontiac. (248) 698-2700.

OAKLAND COUNTY ROADS

More than half of all highways, roads, and streets in Oakland County are on the county system, which is under the jurisdiction of the Board of Oakland County Road Commissioners.

The Road Commission for Oakland County (RCOC) is now in its 87th year of service to the people of Oakland County.

Totaling over 2,600 miles, this system includes all public roads in townships, and through-streets in most cities and villages. It is the largest county system in Michigan and is second in size only to the state highway system. Its subdivision streets alone (all in townships) make up more than 900 miles.

About two-thirds of the system is paved. More than half is within the county's urban area, where some roads are four, five and six lanes wide to handle heavy traffic. A single intersection, in Southfield, is the meeting place for 100,000 vehicles daily. More than 1,200 electrical signals and over 90,000 signs are in use on the county road system.

The Road Commission does not levy a countywide tax, nor does anyone levy a tax countywide for roads.

The basic source of Road Commission revenue is the state-collected vehicle fuel and registration taxes, which motorists pay at the pump, and to the Secretary of State. The state-collected taxes are the only source of substantial funding for county road maintenance, and snow and ice control.

Federal, county, municipal, township and property-owner contributions are also received, but generally only for specific road projects. Such projects include adding lanes, intersection improvements, paving gravel roads, adding new gravel, resurfacing paved roads, adding passing lanes, and other safety improvement projects.

In 1992, RCOC embarked on a program called FAST-TRAC, which is an Intelligent Transportation Systems (ITS) effort. The Road Commission has installed electronic "smart" traffic signals operated by computers and video vision at more than 350 intersections across the county. This system was the first adaptive traffic control in the United States, and the Road Commission was the first local unit of government to initiate a program of this scope and magnitude.

For paving and resurfacing of subdivision streets, property owners can petition RCOC to create a special assessment district through a process prescribed by state law. The process begins by contacting the Road Commission, then petitioning and participating in public hearings.

Members of the three-person Board of County Road Commissioners are appointed for staggered six-year terms by the elected Oakland County Board of Commissioners, which also sets their salaries. Salaries are funded by state-collected vehicle fuel and registration tax revenues. The Board of Road Commissioners is separate from county general government — establishing policies as authorized by state statutes for management of the countywide road system, administering its own budget, and hiring its own full-time managing director and staff.

Citizen requests for information are given special attention by the Road Commission's Department of Citizen Services (DCS). That office may be reached between 8:00 a.m. and 4:45 p.m. weekdays by dialing (248) 858-4804.

OAKLAND COUNTY CENSUS

	1970	1980	1990
Oakland County	907,871	1,011,793	1,083,592
Addison Township	2,431	4,184	4,785
** Leonard Village	378	423	357
Auburn Hills City	—	—	17,076
Avon Township	24,513	40,779	—
Berkley City	21,879	18,637	16,960
Birmingham City	26,170	21,689	19,997
Bloomfield Hills City	3,672	3,985	4,288
Bloomfield Township	42,788	42,876	42,473
Brandon Township	3,830	8,336	10,799
** Ortonville Village	983	1,190	1,252
Clawson City	17,617	15,103	13,874
Commerce Township	14,556	18,789	22,228
** Wolverine Lake Village	4,301	4,968	4,727
Farmington City	10,329	11,022	10,132
Farmington Township	46,767	—	—
Quakertown Village	837	—	—
Wood Creek Farms Village	1,090	—	—
Farmington Hills City	—	58,056	74,652
Ferndale City	30,850	26,227	25,084
Groveland Township	2,570	4,114	4,705
Hazel Park City	23,784	20,914	20,051
Highland Township	8,372	16,958	17,941
Holly Township	3,041	3,612	3,257
** Holly Village	4,355	4,874	5,595
Huntington Woods City	8,536	6,937	6,419
Independence Township	16,327	20,569	23,717
** Clarkston Village	1,034	968	1,005
Keego Harbor City	3,092	3,083	2,932
Lake Angelus City	—	—	328
Lathrup Village City	4,676	4,639	4,329
Lyon Township	4,500	7,078	9,450
Madison Heights City	38,599	35,375	32,196
Milford Township	2,557	5,146	6,610
** Milford Village	4,699	5,041	5,511
Northville City (Oakland County Portion)	2,367	2,785	3,367
Novi City	9,668	22,525	32,998
Novi Township	182	150	150
Oakland Township	4,793	7,628	8,227
Oak Park City	36,762	31,537	30,462
Orchard Lake Village City	1,487	1,798	2,286
Orion Township	14,189	19,566	21,019
** Lake Orion Village	2,921	2,907	3,057
Oxford Township	5,953	7,823	9,004
** Oxford Village	2,536	2,746	2,929
Pleasant Ridge City	3,989	3,217	2,775
Pontiac City	85,279	76,715	71,166
Pontiac Township	12,646	15,388	—
Lake Angelus Village (Part also in Waterford Twp.)	573	210	—
Rochester City	7,054	7,203	7,130
Rochester Hills City	—	—	61,766
Rose Township	2,502	4,465	4,926
Royal Oak City	86,238	70,893	65,410
Royal Oak Township	6,326	5,784	5,011
South Lyon City	2,675	5,214	5,857
Southfield City	69,285	75,607	75,728
Southfield Township	46	40	18
** Beverly Hills Village	13,598	11,598	10,610
** Bingham Farms Village	566	529	1,001
** Franklin Village	3,311	2,864	2,626
Springfield Township	4,388	8,295	9,927
Sylvan Lake City	2,219	1,949	1,884
Troy City	39,419	67,102	72,884
Walled Lake City	3,759	4,748	6,278
Waterford Township	59,123	64,250	66,692
Lake Angelus Village (Part also in Pontiac Twp.)	573	187	—
West Bloomfield Township	28,563	41,962	54,516
White Lake Township	14,311	21,870	22,608
Wixom City	2,010	6,705	8,550

** Townships that have a Village within their boundaries — add both Village and Township figure together for a true township census total.

1999 EQUALIZED VALUATION OF OAKLAND COUNTY

TOWNSHIPS

Addison	\$ 255,830,013
Bloomfield	3,001,661,120
Brandon	401,508,500
Commerce	1,451,398,300
Groveland	191,216,640
Highland	558,623,320
Holly	228,436,450
Independence	1,147,745,000
Lyon	403,138,990
Milford	650,778,790
Novi	7,573,910
Oakland	707,660,930
Orion	1,356,263,230
Oxford	479,304,709
Rose	190,723,940
Royal Oak	68,860,050
Southfield	925,305,960
Springfield	448,035,340
Waterford	2,112,886,245
West Bloomfield	3,062,769,379
White Lake	802,020,450

TOTAL TOWNSHIPS **\$18,451,741,266**

CITIES

Auburn Hills	\$ 1,549,430,870
Berkley	427,750,910
Birmingham	1,443,416,735
Bloomfield Hills	726,144,080
Clarkston	39,994,780
Clawson	337,789,720
Farmington	343,205,280
Farmington Hills	3,456,406,270
Ferndale	516,096,620
Hazel Park	266,681,890
Huntington Woods	272,325,070
Keego Harbor	75,354,097
Lake Angelus	58,790,410
Lathrup Village	158,409,430
Madison Heights	1,085,163,020
Northville	144,084,430
Novi	2,274,361,800
Oak Park	586,859,180
Orchard Lake	286,252,900
Pleasant Ridge	112,144,170
Pontiac	995,858,672
Rochester	462,450,760
Rochester Hills	2,770,396,400
Royal Oak	1,921,398,510
South Lyon	250,586,627
Southfield	3,245,455,620
Sylvan Lake	86,094,540
Troy	4,696,926,183
Walled Lake	185,058,560
Wixom	645,903,900

TOTAL CITIES **\$29,420,791,434**

TOTAL COUNTY **\$47,872,532,700**

**CUSTOMER SERVICE CENTER
PLANNING AND ECONOMIC DEVELOPMENT SERVICES**

**WHERE TO GET MAPS, AERIAL PHOTOGRAPHS
DEVELOPMENT INFORMATION AND BUSINESS ASSISTANCE**

If you are looking for property line maps, aerial photography, development data or business assistance, Oakland County Planning and Economic Development Services has what you need.

In our One Stop Shop, aerial photography of the entire County is available - our most current edition was taken in 1997. The aerials can be superimposed with the current property line maps or enlarged to a scale where detail as fine as telephone poles or parking lot lines are easily visible. Realtors and developers use aerials to locate available vacant land. If you ever need an aerial view of a street, home, place of business or accident site, Planning and Economic Development Services can provide you with a custom aerial enlargement.

The Oakland County Street Index Atlas is organized by geographic township and shows all streets, major roads, lakes, rivers, and municipal boundaries. A complete street index is included on each page. Special "theme" maps are also available which show such topics as zip codes, school districts, voting precincts, contaminated sites, planned road improvements, sewers, land use, and natural resources. These are just a few of the many maps available. Map information continues to move into a digital format and are produced in hard copy or CD-ROM versions.

Development data and statistics are also available in a complete and user-friendly format. Population, housing, income, employment, land use, master plans, zoning and environmental data are collected and prepared. Staff is available to explain how the land is being used, where the wetlands and sensitive ecological areas are, soil conditions, population trends, ethnic makeup and median or per capita incomes. Staff can also assist businesses of all sizes with start-up growth and expansion needs with a number of specific business services.

School and civic group tours of the office are conducted upon request. We are also available to make presentations on various topics or projects.

So . . . if you need a map, aerial or some statistics, give us a call at Planning and Economic Development Services.

Oakland County Planning and Economic Development Services,
Executive Office Building, 1200 North Telegraph, Pontiac, MI 48341. Phone
(248) 858-0720 or (mapping) (248) 858-0723.

CITIES

CITY OF AUBURN HILLS 48326-2753

1827 North Squirrel Road

Phone (248) 370-9400 FAX (248) 370-9348

- COUNCIL Tom McMillin, Mayor
Margaret A. Cooper, Mayor Pro Tem
Michael Davis
Mari Harvey-Edwards
James D. McDonald
Dan Pillsbury
Kay Sendegas
- Clerk (Phone (248) 370-9404) Helen R. Venos
- Treasurer V. L. Valko
- Manager William R. Ross
- Chief of Police Doreen Olko
- Fire Chief Mark Walterhouse
- Assessor Victor Bennett
- District Court Judges (52nd-3rd) Nancy Tolwin Carniak, Ralph H. Nelson and
Julie A. Nicholson....Rochester Hills

CITY OF BERKLEY 48072-1690

3338 Coolidge Highway

Phone (248) 546-2410 FAX (248) 546-2428

- COUNCIL John Mark Mooney, Mayor
Holly Martin, Mayor Pro Tem
Robert E. Bailey
Daniel Benton
Fred Collins
Eileen Steadman
Marilyn Stephan
- Clerk (Phone (248) 546-2420) Leona M. Garrett
- Treasurer Leona M. Garrett
- Manager William L. Rechlin
- Public Safety Director Bruce Henderlight
- Assessor Oakland County Equalization Division
- District Court Judge (45A) William R. Sauer

CITY OF BIRMINGHAM 48012-3001

151 Martin Street, P.O. Box 3001

Phone (248) 644-1800 FAX (248) 644-5614

www.ci.birmingham.mi.us

COMMISSIONERS Russell W. Dixon, Mayor
Chuck Moss, Mayor Pro Tem
Seth Chafetz
Robert A. DeLaura
Dante J. Lanzetta, Jr.
Dianne McKeon
Mike Wooley

Clerk (Phone (248) 644-1800 Ext. 280) Judith A. Benn
Treasurer Thelma Shivel
Manager Thomas M. Markus
Chief of Police Edward Ostin
Fire Chief David Edginton
Assessor Sherry A. Lee
District Court Judges (48th) Edward Avadenka, Gus Cifelli and
Kimberly Small....Bloomfield Hills

CITY OF BLOOMFIELD HILLS 48304-2322

45 East Long Lake Road

Phone (248) 644-1520 FAX (248) 644-4813

COMMISSIONERS Marilyn I. Varbedian, Mayor
Michael T. Zambricki, Mayor Pro Tem
John Davey
Dale Dawkins
Benjamin T. Hoffiz

Clerk (Phone (248) 644-1520) Charles H. Harmon, Jr.
Treasurer Joseph R. Secumski
City Manager Charles H. Harmon, Jr.
Director of Public Safety David R. Piche'
Assessor Oakland County Equalization Division
District Court Judges (48th) Edward Avadenka, Gus Cifelli and Kimberly Small

CITY OF THE VILLAGE OF CLARKSTON 48346-1418

375 Depot Road

Phone (248) 625-1559 FAX (248) 625-3770

COUNCIL Sharron Catallo, Mayor
Karen Sanderson, Mayor Pro Tem
Anne Clifton
Daniel Colombo
Walter Gamble, Jr.
Scott Meyland
David Savage

Clerk (Phone (248) 625-1559) Artemus M. Pappas
Treasurer Artemus M. Pappas
Manager Artemus M. Pappas
Chief of Police Paul D. Ormiston
Fire Chief Roland G. Wilson
Assessor Oakland County Equalization Division
District Court Judge (52nd-2nd) Gerald E. McNally

CITY OF CLAWSON 48017

425 North Main Street

Phone (248) 435-4500 FAX (248) 435-0515

www.ci.clawson.mi.us

COUNCIL Barbara L. Iseppi, Mayor
William Schmidt, Mayor Pro Tem
Timothy Gunn
James Horton
Thomas A. Palmer

Clerk (Phone (248) 435-4500) Carol A. Kanirie
Treasurer Kathryn M. Baker
Manager Joseph Merucci
Chief of Police Mike Walsh
Fire Chief Kraig Bouse
Assessor Oakland County Equalization Division
District Court Judges (52nd-4th) William E. Bolle, Dennis C. Drury and
Michael A. Martone....Troy

CITY OF FARMINGTON 48335

23600 Liberty Street

Phone (248) 474-5500 FAX (248) 473-7261

www.ci.farmington.mi.us

- COUNCIL William S. Hartsock, Mayor
James K. Mitchell, Mayor Pro Tem
Mary L. Bush
Arnold T. Campbell
JoAnne M. McShane
- Clerk (Phone (248) 474-5500) Patsy K. Cantrell
- Treasurer Patsy K. Cantrell
- Manager Frank J. Lauhoff
- Director of Public Safety Gary M. Goss
- Assessor John G. Sailer
- District Court Judges (47th) Frederick L. Harris and Marla E. Parker

CITY OF FARMINGTON HILLS 48336-1165

31555 West Eleven Mile Road

Phone (248) 474-6115 FAX (248) 474-5925

- COUNCIL Nancy Bates, Mayor
Jerry Ellis, Mayor Pro Tem
Vicki Barnett
Barry Brickner
Jonathan L. Grant
Christopher McRae
Cheryl Oliverio
- Clerk (Phone (248) 473-9558) Kathryn A. Dornan
- Treasurer Charles D. Rosch
- Manager Steve Brock
- Chief of Police William J. Dwyer
- Fire Chief Richard Marinucci
- Assessor Dean Babb
- District Court Judges (47th) Frederick L. Harris and Marla E. Parker
.....Farmington

CITY OF FERNDALE 48220-1797

300 East Nine Mile Road

Phone (248) 546-2360 FAX (248) 546-2369

www.ferndale-mi.com

- COUNCIL Charles G. Goedert, Mayor
 Robert G. Porter, Mayor Pro Tem
 Craig Covey
 Gerry O. Kulick
 Jonathan M. Warshay
- Clerk (Phone (248) 546-2384) Karen Pedro
 Treasurer Jay Singh
 City Manager (Phone (248) 546-2360) Thomas Barwin
 Chief of Police Michael Kitchen
 Fire Chief William LeGault
 Assessor Jay Singh
 Constables James R. Rentz and Wayne Edwin Smith
 District Court Judge (43rd) Joseph Longo

CITY OF HAZEL PARK 48030

111 East Nine Mile Road

Phone (248) 546-4064 FAX (248) 414-5945

www.hazelpark.org

- COUNCIL Ben Colley, Mayor
 Donna Vance, Mayor Pro Tem
 Jack F. Lloyd
 Kenneth J. Mayo
 Doug Pashakarnis
- Clerk (Phone (248) 546-4064) Mary Ellen Graver
 Treasurer Dee Ann Lewis
 Manager (Phone (248) 546-4060) K. Joseph Young
 Chief of Police David Neidermeier
 Fire Chief Raymond DeWalt
 Assessor Oakland County Equalization Division
 District Court Judge (43rd) Keith P. Hunt

CITY OF HUNTINGTON WOODS 48070-1199

26815 Scotia Road

Phone (248) 541-4300 FAX (248) 541-3412

www.ci.huntington-woods.mi.us

COMMISSIONERS Ronald F. Gillham, Mayor
Robert F. Paul, Mayor Pro Tem
Jeffrey Jenks
Phyllis B.C. Kramer
Mary L. White

Clerk (Phone (248) 541-4300) Kathleen A. Keene
Treasurer Kristine K. Hyre
Manager Alex R. Allie
Director of Public Safety Steven Fairman
Fire Chief Douglas Conciatu
Assessor Oakland County Equalization Division
District Court Judges (45B) Marvin F. Frankel and Benjamin J. Friedman
.....Oak Park

CITY OF KEEGO HARBOR 48320-0665

2025 Beechmont, P.O. Box 665

Phone (248) 682-1930 FAX (248) 682-1635

members.aol.com/keegoharbr

COUNCIL Arthur D. Nance, Mayor
Barbara Kline, Mayor Pro Tem
Ralph W. Behler
Robert Burns
Thomas Hutchison

Clerk (Phone (248) 682-1930) Dorothy Zarzecki
Treasurer Dorothy Zarzecki
Manager Michael J. Steklac
Chief of Police Dennis Watkins
Fire Chief William Brown
Assessor Oakland County Equalization Division
District Court Judges (48th) Edward Avadenka, Gus Cifelli and
Kimberly Small....Bloomfield Hills

CITY OF MADISON HEIGHTS 48071-1899

300 West Thirteen Mile Road

Phone (248) 588-1200 FAX (248) 588-8442

www.ci.madison-heights.mi.us

COUNCIL Edward C. Swanson, Mayor
Richard L. Clark, Mayor Pro Tem
Robert J. Corbett
Ernest E. Fisher
Marilyn R. Russell
Margene Ann Scott
Toni F. Shad

Clerk (Phone (248) 583-0826) Geraldine A. Flack
Treasurer Herbert V. Herriman
Manager Jon R. Austin
Chief of Police Robert Blickensdorf
Fire Chief James Martin
Assessor Dwayne McLachlan
District Court Judge (43rd) Robert J. Turner

CITY OF NORTHVILLE 48167-1599

215 West Main Street

Phone (248) 349-1300 FAX (248) 349-9244

COUNCIL Christopher J. Johnson, Mayor
Carolann Ayers, Mayor Pro Tem
John G. Hardin
Kevin Hartshorne
Thomas F. Swigart

Clerk (Phone (248) 349-1300) Dianne Massa
Treasurer Kathleen Baigrie
Manager Gary L. Word
Chief of Police James Petres
Fire Chief James Allen
Assessor Wayne County Appraisal Company
District Court Judges (35th) Ronald W. Lowe and John E. MacDonald
.....Plymouth

CITY OF NOVI 48375-3024
45175 West Ten Mile Road
 Phone (248) 347-0460 FAX (248) 347-0577
www.ci.novi.mi.us

COUNCIL Richard J. Clark, Mayor
 Laura Lorenzo, Mayor Pro Tem
 Michelle Bononi
 Hugh D. Crawford
 Louis Csordas
 Craig DeRoche
 Edward G. Kramer

Clerk (Phone (248) 347-0456) Vacant
 Treasurer Steven A. Babinchak
 Manager Vacant
 Chief of Police Douglas F. Shaeffer
 Fire Chief Arthur R. Lenaghan
 Assessor Glenn Lemmon
 District Court Judges (52nd-1st) Michael Batchik, Brian W. MacKenzie and
 Dennis N. Powers

CITY OF OAK PARK 48237-2029
13600 Oak Park Boulevard
 Phone (248) 691-7400 FAX (248) 691-7167

COUNCIL Gerald E. Naftaly, Mayor
 Arthur Frohlich, Mayor Pro Tem
 Raymond M. Abrams
 Willie Horton
 Michael M. Seligson

Clerk (Phone (248) 691-7544) Sandra K. Gadd
 Treasurer James Ghedotte
 Manager Daniel Fitzpatrick
 Director of Public Safety G. Robert Seifert
 Fire Chief John McNeilance
 Assessor Ronald Sztumerski
 District Court Judges (45B) Marvin F. Frankel and Benjamin J. Friedman

CITY OF ORCHARD LAKE VILLAGE 48323-1605

3955 Orchard Lake Road

Phone (248) 682-2400 FAX (248) 682-1308

COUNCIL Gerald Kosmensky, Mayor
Bruce H. McIntyre, Mayor Pro Tem
Nancy Davis
Shirley Itin
Timothy C. McCabe
H. K. Sperlich
James K. Talpos

Clerk (Phone (248) 682-2400) Janet Overholt Green
Treasurer Frank A. Copeland
Chief of Police David J. King
Fire Chief William Brown
Assessor John G. Sailer
District Court Judges (48th) Edward Avadenka, Gus Cifelli and
Kimberly Small....Bloomfield Hills

CITY OF PLEASANT RIDGE 48069

23925 Woodward Avenue

Phone (248) 541-2900 FAX (248) 541-2504

www.geocities.com/cityofpleasantridge

COMMISSIONERS Ralph A. Castelli, Jr., Mayor
Raymond F. Jahn, Jr., Mayor Pro Tem
Cheryl A. Baker
Mark W. LaChey
Leonard W. Wessels

Clerk (Phone (248) 541-2900) Sherry W. Ball
Treasurer Thomas E. Dempsey
Manager Sherry W. Ball
Chief of Police Richard A. Vander Eyk
Fire Chief William LeGault
Assessor Oakland County Equalization Division
District Court Judges (45B) Marvin F. Frankel and Benjamin J. Friedman
.....Oak Park

CITY OF PONTIAC 48342-2271
450 Wide Track Drive, East
 Phone (248) 857-7601 FAX (248) 857-8795
www.pontiac.mi.us

COUNCIL Walter Moore, Mayor
 Ernest Allen, Sr., Deputy Mayor
 Clarence E. Phillips, President
 Gary A. Foster, President Pro Tem
 Ray Alexander
 John P. Bueno
 Charlie Harrison, III
 Everett L. Seay
 Susan Shoemaker

Clerk (Phone (248) 857-7619) Mary H. Williams
 Treasurer Maurice (Butch) Finnegan
 Chief of Police Larry Miracle
 Fire Chief Jeffrey Hawkins
 Assessor Oakland County Equalization Division
 District Court Judges (50th) Leo Bowman, Christopher C. Brown,
 Preston G. Thomas and William Waterman

CITY OF ROCHESTER 48307
400 Sixth Street, P.O. Box 80010
 Phone (248) 651-9061 FAX (248) 651-2624

COUNCIL David Katulic, Mayor
 Robert Head, Mayor Pro Tem
 David Becker
 Stuart Bikson
 Penny M. Crissman
 Karen Lewis
 Thomas L. Werth

Clerk (Phone (248) 651-9061) Nancy D. Hill
 Treasurer Thomas Skrobola
 Manager Kenneth A. Johnson
 Chief of Police Theodore Glynn
 Fire Chief Daniel Jacobson
 Assessor Oakland County Equalization Division
 District Court Judges (52nd-3rd) Nancy Tolwin Carniak, Ralph H. Nelson and
 Julie A. Nicholson....Rochester Hills

CITY OF ROCHESTER HILLS 48309-3033

1000 Rochester Hills Drive

Phone (248) 656-4600 FAX (248) 656-4744

www.rochesterhills.org

COUNCIL Patricia Somerville, Mayor
Melinda Hill, President
Bryan K. Barnett, Vice President
John L. Dalton
Jim Duistermars
Lois Golden
Barbara L. Holder
Gerald J. Robbins

Clerk (Phone (248) 656-4630) Beverly A. Jasinski
Treasurer Robert Spaman
Administrator Marc Ott
Chief of Police Oakland County Sheriff Department
Fire Chief William Thornton
Assessor Kurt Dawson
District Court Judges (52nd-3rd) Nancy Tolwin Carniak, Ralph H. Nelson and
Julie A. Nicholson

CITY OF ROYAL OAK 48068

211 Williams Street

Phone (248) 546-1000 FAX (248) 546-1546

www.ci.royal-oak.mi.us

COMMISSIONERS Dennis G. Cowan, Mayor
Peter H. Webster, Mayor Pro Tem
Marie L. Donigan
Laura J. Harrison
Thomas E. Kuhn
Ilene M. Lanfear
Jeanne Sarnacki

Clerk (Phone (248) 544-6650) Mary C. Haverty
Treasurer Michael Kondek
Manager Lawrence M. Doyle
Chief of Police Mel Johnson
Fire Chief Richard Strehlke
Assessor Richard Vincent
District Court Judges (44th) Terrence H. Brennan and Daniel Sawicki

CITY OF SOUTH LYON 48178

335 South Warren

Phone (248) 437-1735 FAX (248) 486-0049

- COUNCIL Jeffrey L. Potter, Mayor
 John Doyle, Jr., Mayor Pro Tem
 Ray Crawford
 C. R. (Dick) Selden
 Tedd M. Wallace
- Clerk (Phone (248) 437-1735) Julie C. Zemke
- Treasurer Julie C. Zemke
- Manager Rodney L. Cook
- Chief of Police Lloyd T. Collins
- Fire Chief Craig Kaska
- Assessor Josephine Lentine
- District Court Judges (52nd-1st) Michael Batchik, Brian W. MacKenzie and
 Dennis N. Powers....Novi

CITY OF SOUTHFIELD 48076

26000 Evergreen Road

Phone (248) 354-1000 FAX (248) 354-7937

www.metronet.lib.mi.us/SFLD

- COUNCIL Donald F. Fracassi, Mayor
 Myron A. Frasier, President
 Paul Condino, President Pro Tem
 Jonathan Brateman
 Sylvia Jordan
 Sidney Lantz
 Brenda Lawrence
 Nida Samona
- Clerk (Phone (248) 354-9380) Nancy L.M. Banks
- Treasurer Roman J. Gronkowski
- Administrator Donald J. Gross
- Chief of Police Joseph E. Thomas
- Fire Chief Robert Ozias
- Assessor Ernest Beren
- District Court Judges (46th) Stephen C. Cooper, Bryan H. Levy and
 Susan M. Moiseev

CITY OF SYLVAN LAKE 48320-1679
1820 Inverness Street
 Phone (248) 682-1440 FAX (248) 682-7721
www.sylvanlake.org

COUNCIL Stuart Bandalene, Mayor
 Pete Peters, Mayor Pro Tem
 Bob Dzenko
 Peggy Houle
 William Piontkowski

Clerk (Phone (248) 682-1440) Dennise Clippert
 Treasurer Dennise Clippert
 Manager John Martin
 Chief of Police Marvin D. McTavish
 Fire Chief William Brown
 Assessor Oakland County Equalization Division
 District Court Judges (48th) Edward Avadenka, Gus Cifelli and
 Kimberly Small....Bloomfield Hills

CITY OF TROY 48084-5285
500 West Big Beaver Road
 Phone (248) 524-3300 FAX (248) 524-0851
www.ci.troy.mi.us

COUNCIL Jeanne M. Stine, Mayor
 Louise E. Schilling, Mayor Pro Tem
 Henry W. Allemon
 Thomas S. Kaszubski
 Anthony N. Pallotta
 John R. Stevens
 Eldon J. Thompson

Clerk (Phone (248) 524-3316) Tamara A. Renshaw
 Treasurer Nancy Aguinaga
 Manager John Szerlag
 Chief of Police Charles Craft
 Fire Chief William Nelson
 Assessor Nino Licari
 District Court Judges (52nd-4th) William E. Bolle, Dennis C. Drury and
 Michael A. Martone

CITY OF WALLED LAKE 48390-0099
1499 E. West Maple Road, P.O. Box 99
 Phone (248) 624-4847 FAX (248) 624-1616
www.walledlake.com

COUNCIL William T. Roberts, Mayor
 William I. Burke, Mayor Pro Tem
 Linda S. Ackley
 Diane Cartter
 James D. Clifton
 Helen Foss
 Heather F. M. Hill

Clerk (Phone (248) 624-4847) Maryanne Cornelius
 Treasurer Joyce M. Golden
 Manager Phillip S. Vawter
 Director of Public Safety Jerry L. Walker
 Assessor Oakland County Equalization Division
 District Court Judges (52nd-1st) Michael Batchik, Brian W. MacKenzie and
 Dennis N. Powers....Novi

CITY OF WIXOM 48393-2567
49045 Pontiac Trail
 Phone (248) 624-4557 FAX (248) 624-0863

COUNCIL Michael McDonald, Mayor
 John V. Momberg, Mayor Pro Tem
 James Cutright
 John Lee
 Theodore G. McCoy
 Vernon Mitchell
 Richard Ziegler

Clerk (Phone (248) 624-4557) Linda Kirby
 Treasurer Kevin Brady
 Manager J. Michael Dornan
 Chief of Police Clarence Goodlein
 Fire Chief George Spencer
 Assessor John G. Sailer
 District Court Judges (52nd-1st) Michael Batchik, Brian W. MacKenzie and
 Dennis N. Powers....Novi

TOWNSHIPS

TOWNSHIP OF ADDISON

1440 Rochester Road, Leonard 48367

Phone (248) 628-3317 FAX (248) 628-2207

Supervisor A. Robert Koski
Clerk (Phone (248) 628-3317) Pauline Bennett
Treasurer Ray E. Terry
Trustees Ed Brakefield
..... Sandra Campbell
..... Patricia Eisenhardt
..... Michael McDonald
Chief of Police Oakland County Sheriff Department
Fire Chief George Spencer
Assessor Heidi Roenicke
District Court Judges (52nd-3rd) Nancy Tolwin Carniak, Ralph H. Nelson and
..... Julie A. Nicholson....Rochester Hills

CHARTER TOWNSHIP OF BLOOMFIELD

4200 Telegraph Road, P.O. Box 489, Bloomfield Hills 48303-0489

Phone (248) 433-7700 FAX (248) 433-7714

www.bloomfieldtp.org

Supervisor David Payne
Clerk (Phone (248) 433-7702) Wilma S. Cotton
Treasurer Dan Devine
Trustees Janet Roncelli
..... Sherry Stefanos
..... Jerry J. Tobias
..... William R. Yaw, Jr.
Chief of Police Jeffrey Werner
Fire Chief Leo Chartier
Assessor Richard B. Farms
District Court Judges (48th) Edward Avadenka, Gus Cifelli and
..... Kimberly Small....Bloomfield Hills

CHARTER TOWNSHIP OF BRANDON
395 Mill Street, P.O. Box 429, Ortonville 48462
 Phone (248) 627-2851 FAX (248) 627-3719

Supervisor Pat Alexander
 Clerk (Phone (248) 627-2851) Sally Jo Swayne
 Treasurer (Phone (248) 627-2853) Linda Owen
 Trustees Ronald Lapp
 Thomas Stowell
 James Webb
 Sandra Willett
 Constables James Frantz and Edward LaDouceur
 Chief of Police Oakland County Sheriff Department
 Fire Chief Robert McArthur
 Assessor Landmark Appraisal Company
 District Court Judge (52nd-2nd) Gerald E. McNally
Clarkston

CHARTER TOWNSHIP OF COMMERCE
2840 Fisher Avenue, Commerce Township 48390
 Phone (248) 624-0110 FAX (248) 624-5384
www.commercetwp.com

Supervisor Thomas K. Zoner
 Clerk (Phone (248) 960-7020) Sandra S. Abrams
 Treasurer Susan L. Gross
 Trustees Robert J. Long
 Cheryl Magalski
 Daniel P. Munro
 Rick Sovel
 Chief of Police Oakland County Sheriff Department
 Fire Chief Ronald Bolitho
 Assessor Oakland County Equalization Division
 District Court Judges (52nd-1st) Michael Batchik, Brian W. MacKenzie and
 Dennis N. Powers....Novi

TOWNSHIP OF GROVELAND

4695 Grange Hall Road, Holly 48442

Phone (248) 634-4152 or (248) 627-3585 FAX (248) 634-1351

Supervisor Robert DePalma
 Clerk (Phone (248) 634-4152) Pamela Mazich
 Treasurer Shirley A. Scramlin
 Trustees David C. Ax
 Diane Howell
 Chief of Police Michigan State Police
 Fire Chief Merilyn McGee
 Assessor Oakland County Equalization Division
 District Court Judge (52nd-2nd) Gerald E. McNally
Clarkston

CHARTER TOWNSHIP OF HIGHLAND
205 North John Street, Highland 48357

Phone (248) 887-3791 FAX (248) 887-1937

Supervisor John P. Stakoe
 Clerk (Phone (248) 887-3791 Ext. 5) William E. Brian
 Treasurer Judith A. Kiley
 Trustees Judy Dietrich
 Richard Gruber
 Kenneth G. Hurst
 Nancy E. Sharp
 Chief of Police Oakland County Sheriff Department
 Fire Chief James Crunk
 Assessor Nancy Jones
 District Court Judges (52nd-1st) Michael Batchik, Brian W. MacKenzie and
 Dennis N. Powers....Novi

TOWNSHIP OF HOLLY

102 Civic Drive, Holly 48442

Phone (248) 634-9331 FAX (248) 634-5482

www.hollytwp.com

Supervisor Dale M. Smith
 Clerk (Phone (248) 634-9331) Karin S. Winchester
 Treasurer Bernice M. Alexander
 Trustees Ronald W. Applegate
 Gary M. Collins
 Chief of Police Michigan State Police
 Fire Chief Roger W. Caster
 Assessor Gregory MacAlpine
 District Court Judge (52nd-2nd) Gerald E. McNally
Clarkston

CHARTER TOWNSHIP OF INDEPENDENCE

90 North Main Street, P.O. Box 69, Clarkston 48347

Phone (248) 625-5111 FAX (248) 625-2585

www.to.independence.mi.us

Supervisor Dale A. Stuart
 Clerk (Phone (248) 625-5111 Ext. 203) ... Joan E. McCrary
 Treasurer James R. Wenger
 Trustees Jeffrey M. McGee
 Larry Rosso
 Daniel F. Travis
 Neil E. Wallace
 Chief of Police Oakland County Sheriff Department
 Fire Chief Gar Wilson
 Assessor David Kramer
 District Court Judge (52nd-2nd) Gerald E. McNally
Clarkston

CHARTER TOWNSHIP OF LYON
58000 Grand River Avenue, New Hudson 48165
 Phone (248) 437-2240 FAX (248) 437-2336

Supervisor James F. Atchison
 Clerk (Phone (248) 437-2240 Ext. 14) Pamela Johnson
 Treasurer Patricia D. Carcone
 Trustees Daniel L. Cash
 Paul Fransway
 Timothy R. Reed
 Joseph E. Shigley, Jr.
 Chief of Police Oakland County Sheriff Department
 Fire Chief Leslie L. Cash
 Assessor Oakland County Equalization Division
 District Court Judges (52nd-1st) Michael Batchik, Brian W. MacKenzie and
 Dennis N. Powers....Novi

CHARTER TOWNSHIP OF MILFORD
1100 Atlantic, Milford 48381-2000
 Phone (248) 685-8731 FAX (248) 685-9236

Supervisor James F. Caswell
 Clerk (Phone (248) 685-8731) Colleen Schwartz
 Treasurer Mary Jane Cagney
 Trustees Norman D. Bourns
 Randal K. Busick
 Donald D. Green
 Brien R. Worrell
 Chief of Police Wayne Walli
 Fire Chief Rex S. Martin
 Assessor Oakland County Equalization Division
 District Court Judges (52nd-1st) Michael Batchik, Brian W. MacKenzie and
 Dennis N. Powers....Novi

TOWNSHIP OF NOVI
P.O. Box 924, Northville 48167

Supervisor (Phone (248) 348-0365) Raymond Schovers
Clerk (Phone (248) 349-1964) Cara Bennett
Treasurer (Phone (248) 348-2950) Robert Peterson
Trustees Bruce Lowell
..... Todd Mossoian
Chief of Police Michigan State Police
Fire Chief Arthur R. Lenaghan
Assessor Oakland County Equalization Division
District Court Judges (52nd-1st) Michael Batchik, Brian W. MacKenzie and
Dennis N. Powers....Novi

CHARTER TOWNSHIP OF OAKLAND
4393 Collins Road, Rochester 48306
Phone (248) 651-4440 FAX (248) 651-7340

Supervisor Susan L. Hoffman
Clerk (Phone (248) 651-4440 Ext. 210) . Carolyn L. Phelps
Treasurer Sharon L. Creps
Superintendent/Manager James V. Creech
Trustees Dominic Abbate
..... Amy Boltz
..... James Derian
..... Marc H. Edwards
Chief of Police Oakland County Sheriff Department
Fire Chief William Benoit, Jr.
Assessor Oakland County Equalization Division
District Court Judges (52nd-3rd) Nancy Tolwin Carniak, Ralph H. Nelson and
Julie A. Nicholson....Rochester Hills

CHARTER TOWNSHIP OF ORION
2525 Joslyn Road, Lake Orion 48360
 Phone (248) 391-0304 FAX (248) 391-9984
www.voyager.net/orion or www.township.orion.mi.us
 E-mail: orientwp@voyager.net

Supervisor Colette M. Dywasuk
 Clerk (Phone (248) 391-0304 Ext. 104) Jill D. Bastian
 Treasurer James Marleau
 Trustees Burke R. Cueny
 Leon Harrison
 Richard L. Tomczak
 Eric S. Wilson
 Chief of Police Oakland County Sheriff Department
 Fire Chief Jeffrey D. Key
 Assessor John J. Attwell
 District Court Judges (52nd-3rd) Nancy Tolwin Carniak, Ralph H. Nelson and
 Julie A. Nicholson....Rochester Hills

CHARTER TOWNSHIP OF OXFORD
18 West Burdick Street, P.O. Box 3, Oxford 48371
 Phone (248) 628-9787 FAX (248) 628-8139
www.oxfordtownship.org

Supervisor William Dunn
 Clerk (Phone (248) 628-9787 Ext. 5) ... Clara J. Sanderson
 Treasurer Joseph G. Ferrari
 Trustees Susan Bellairs
 Shirley Clancy
 Patricia Fitchena
 Bradford C. Jacobsen
 Chief of Police Oakland County Sheriff Department
 Fire Chief Jack LeRoy
 Assessor Oakland County Equalization Division
 District Court Judges (52nd-3rd) Nancy Tolwin Carniak, Ralph H. Nelson and
 Julie A. Nicholson....Rochester Hills

TOWNSHIP OF ROSE
204 Franklin Street, Holly 48442
 Phone (248) 634-8701 FAX (248) 634-6888

Supervisor Chester W. Koop
 Clerk (Phone (248) 634-8701) Alison K. Kalcec
 Treasurer Susan J. Slaughter
 Trustees Clarence O. Gordon
 Alfred E. Lopez
 Constable Emile Bair
 Chief of Police Michigan State Police
 Fire Chief Roger W. Caster
 Assessor Sue Weishuhn
 District Court Judges (52nd-1st) Michael Batchik, Brian W. MacKenzie and
 Dennis N. Powers....Novi

CHARTER TOWNSHIP OF ROYAL OAK
21075 Wyoming Avenue, Ferndale 48220
 Phone (248) 547-9800 FAX (248) 547-1415

Supervisor Jerry L. Saddler
 Clerk (Phone (248) 547-9804) Gwendolyn W. Turner
 Treasurer Cynthia A. Phillips
 Trustees David Ford
 Cary Junior
 Frank Miles, Jr.
 Francine Thurman
 Chief of Police Oakland County Sheriff Department
 Fire Chief Tyrone C. Scott
 Assessor Oakland County Equalization Division
 District Court Judges (45B) Marvin F. Frankel and Benjamin J. Friedman
Oak Park

TOWNSHIP OF SOUTHFIELD

18550 West Thirteen Mile Road, Southfield Township 48025-5262

Phone (248) 540-3420 FAX (248) 540-3427

Supervisor Raymond E. Mills
 Clerk (Phone (248) 540-3420) Sharon Tischler
 Treasurer Delores Aebersold
 Trustees John E. Breen
 I. Jack Fahlen
 Richard N. Holloway
 Whit Jones
 Chief of Police Beverly Hills Public Safety
 Fire Chief Beverly Hills Public Safety
 Assessor Oakland County Equalization Division
 District Court Judges (46th) Stephen C. Cooper, Bryan H. Levy and
 Susan M. Moiseev....Southfield

CHARTER TOWNSHIP OF SPRINGFIELD

650 Broadway, P.O. Box 1038, Davisburg 48350-1038

Phone (248) 634-3111 or (248) 625-4802 FAX (248) 634-2316

Supervisor Collin W. Walls
 Clerk (Phone (248) 625-4802) Nancy Strole
 Treasurer Lois J. Stiles
 Trustees Margaret A. Bloom
 Elaine Field-Smith
 Richard D. Miller
 Dennis J. Vallad
 Chief of Police Oakland County Sheriff Department
 Fire Chief Charles M. Oaks
 Assessor Greg F. Zamenski
 District Court Judge (52nd-2nd) Gerald E. McNally
Clarkston

CHARTER TOWNSHIP OF WATERFORD

5200 Civic Center Drive, Waterford 48329-3773

Phone (248) 674-3111 FAX (248) 674-5455

www.twp.waterford.mi.us

Supervisor Katherine G. Innes
 Clerk (Phone (248) 674-6266) Betty Fortino
 Treasurer Dee A. Minton
 Trustees Todd T. Birkle
 Paul E. Deni
 Bette O'Shea
 Jean A. Scott
 Chief of Police John B. Dean
 Fire Chief David Yarber
 Assessor Donald Wood
 District Court Judges (51st) Kenneth H. Hempstead and Phyllis C. McMillen

CHARTER TOWNSHIP OF WEST BLOOMFIELD

4550 Walnut Lake Road, P.O. Box 250130, West Bloomfield 48325-0130

Phone (248) 451-4800 FAX (248) 682-3788

Supervisor Jeddy Hood
 Clerk (Phone (248) 451-4848) Sharon A. Law
 Treasurer Denise D. Hammond
 Trustees Allen Adelberg
 Stuart Brickner
 Raymond R. Holland
 Deborah Macon
 Chief of Police Ronald D. Cronin
 Fire Chief Carl T. Borg
 Assessor Lisa Hobart
 District Court Judges (48th) Edward Avadenka, Gus Cifelli and
 Kimberly Small....Bloomfield Hills

VILLAGES

VILLAGE OF BEVERLY HILLS

18500 West Thirteen Mile Road, Beverly Hills 48025

Phone (248) 646-6404 FAX (248) 646-3703

COUNCIL Andrew R. Craig, President
Paul Lison, President Pro Tem
H. Hildreth Buterbaugh
Doyle Downey
Elaine T. Kennedy
Todd Stearn
Bob Walsh

Clerk (Phone (248) 646-6404) Ellen E. Marshall
Treasurer Colleen A.L. Wayland
Manager Tamara O'Brien Hanlin
Director of Public Safety Karl M. Woodard
Assessor Oakland County Equalization Division
District Court Judges (46th) Stephen C. Cooper, Bryan H. Levy and
Susan M. Moiseev....Southfield

VILLAGE OF BINGHAM FARMS

30400 Telegraph Road, Suite 328, Bingham Farms 48025

Phone (248) 644-0044 (9:00 a.m. - 1:00 p.m.) FAX (248) 644-3254

E-mail: bingham@mich.com

TRUSTEES Mary Jane Bauer, President
David Leckie, President Pro Tem
Mel Ettenson
William Freeman
Delores Tripp
C. Robert Wartell
Robert Zimmermann

Clerk (Phone (248) 644-0044) Kathryn P. Hagaman
Treasurer Karin Ludwick
Chief of Police Edward A. Glomb
Assessor Oakland County Equalization Division
District Court Judges (46th) Stephen C. Cooper, Bryan H. Levy and
Susan M. Moiseev....Southfield

VILLAGE OF FRANKLIN
32325 Franklin Road, Franklin 48025
 Phone (248) 626-9666 FAX (248) 626-0538
www.franklin.mi.us

TRUSTEES James A. Pikulas, President
 Florence F. Saltzman, President Pro Tem
 Brian W. Coyer
 Susan Davis
 H. Fred Gallasch
 Randy R. McElroy
 Ralph Sosin

Clerk (Phone (248) 626-9666) Eileen H. Pulker
 Treasurer Joseph C. Brozic
 Administrator Jane Bais-DiSessa
 Chief of Police Edward A. Glomb
 Assessor Oakland County Equalization Division
 District Court Judges (46th) Stephen C. Cooper, Bryan H. Levy and
 Susan M. Moiseev....Southfield

VILLAGE OF HOLLY
202 South Saginaw Street, Holly 48442-1689
 Phone (248) 634-9571 FAX (248) 634-4211
www.vi.holly.mi.us

COUNCIL Jeff Miller, President
 James Clark, President Pro Tem
 Shirley Campbell
 Pauline Kenner
 Ardath Regan
 Joan Snitgen
 Don Winglemire

Clerk (Phone (248) 634-9571) Marsha A. Powers
 Treasurer Marsha A. Powers
 Manager Mark Abeles-Allison
 Chief of Police Greg Hansmeier
 Assessor Gregg MacAlpine
 District Court Judge (52nd-2nd) Gerald E. McNally
Clarkston

VILLAGE OF LAKE ORION

37 East Flint Street, Lake Orion 48362

Phone (248) 693-8391 FAX (248) 693-5874

- COUNCIL Charles L. Viers, President
Ken Van Porfliet, President Pro Tem
Lloyd Coe
Carl A. Cyrowski
Douglas L. Dendel
Becky Goodman
Harry K. Stephen
- Clerk (Phone (248) 693-8391) Arlene M. Nichols
Treasurer Cathy Thorlakson
Manager JoAnn Van Tassel
Chief of Police James R. Leach, Sr.
Assessor John Attwell
District Court Judges (52nd-3rd) Nancy Tolwin Carniak, Ralph H. Nelson and
Julie A. Nicholson....Rochester Hills

VILLAGE OF LEONARD

23 East Elmwood Street, P.O. Box 789, Leonard 48367-0789

Phone (248) 628-7380 FAX (248) 628-8673

- TRUSTEES Eugene A. Mallia, Jr., President
Pauline Blanka, President Pro Tem
Paul Almeranti
Wesley Douglas
Janet Ostrander
David Rathburg
Charlene Sutherby
- Clerk (Phone (248) 628-7380) Cynthia Oehler
Treasurer Judith J. Verse
Manager Eugene A. Mallia, Jr.
Chief of Police Oakland County Sheriff Department
Assessor Heidi Roenicke
District Court Judges (52nd-3rd) Nancy Tolwin Carniak, Ralph H. Nelson and
Julie A. Nicholson....Rochester Hills

VILLAGE OF MILFORD

1100 Atlantic, Milford 48381

Phone (248) 684-1515 FAX (248) 684-5502

www.milford.lib.mi.us/mcin/groups/village.htm

- COUNCIL Christopher B. Smith, President
 Thomas Nader, President Pro Tem
 Jerry Aubry
 Ron Fowkes
 James Kovach
 Terri Vieracker
 Nancy Weeks
- Clerk (Phone (248) 684-1515) Deborah S. Frazer
- Treasurer Becky J. Jacques
- Manager Arthur Shufflebarger
- Chief of Police Wayne Walli
- Assessor Oakland County Equalization Division
- District Court Judges (52nd-1st) Michael Batchik, Brian W. MacKenzie and
 Dennis N. Powers....Novi

VILLAGE OF ORTONVILLE

395 Mill Street, P.O. Box 428, Ortonville 48462-0428

Phone (248) 627-4976 FAX (248) 627-3719

- COUNCIL Susan K. Bess, President
 Kay Green, President Pro Tem
 Russell Adams
 Carrie Fenton
 Bobby Hampton
 Mary Kassuba
 Dan Wallace
- Clerk (Phone (248) 627-4976) Cynthia A. VanMegroet
- Treasurer Cynthia A. VanMegroet
- Manager Peter E. Auger
- Chief of Police Oakland County Sheriff Department
- Assessor Landmark Appraisal Company
- District Court Judge (52nd-2nd) Gerald E. McNally
Clarkston

VILLAGE OF OXFORD

22 West Burdick, P.O. Box 94, Oxford 48371-0094

Phone (248) 628-2543 FAX (248) 628-7030

E-mail: villoxfd@aol.com

COUNCIL Susan K. Bossardet, President
Lisa Brantley, President Pro Tem
Thomas Athans
Richard DiCea
Wendy Taube

Clerk (Phone (248) 628-2543) Rose M. Bejma
Treasurer Linda K. Smith
Manager Mark D. Slown
Chief of Police Michael Neymanowski
Assessor Oakland County Equalization Division
District Court Judges (52nd-3rd) Nancy Tolwin Carniak, Ralph H. Nelson and
Julie A. Nicholson....Rochester Hills

VILLAGE OF WOLVERINE LAKE

425 Glengary Road, Wolverine Lake 48390-1404

Phone (248) 624-1710 FAX (248) 624-3536

COUNCIL Edward Sienkiewicz, President
David Wilner, President Pro Tem
Dorothy Kempf
Dave Leybourn
Dave Renwick
Robert Smith
Karen Vickers

Clerk (Phone (248) 624-1710) Rita L. Irwin
Treasurer Frances A. Barber
Administrator Sharon A. Miller
Chief of Police Joseph George
Assessor Oakland County Equalization Division
District Court Judges (52nd-1st) Michael Batchik, Brian W. MacKenzie and
Dennis N. Powers....Novi