

1993 OAKLAND COUNTY DIRECTORY



GENREF

JS
261
.02
1993
c.1

LYNN D. ALLEN
County Clerk & Register of Deeds

COUNTY OF OAKLAND MICHIGAN

JS
261
.02
1993
c.1

Provided by the
Oakland County Library Board

COUNTY, CITY, TOWNSHIP and VILLAGE OFFICERS

1993

County Seat
1200 N. TELEGRAPH ROAD
PONTIAC, MICHIGAN 48341

General Information 858-1000
Toll free from Holly — Rose Township 634-4418
Toll free from South Lyon — Novi — Farmington 349-7850
Toll free from Southfield — Royal Oak 645-1150

L. Brooks Patterson, County Executive
Larry P. Crake, Chairperson, Board of Commissioners
Lynn D. Allen, County Clerk and Register of Deeds

FRONT COVER:

Pictured on the cover is the Waterford Oaks Activity Center, site of the former Evangelical Mission Church. In warm weather, operation of the Pontiac Holiness Campground sprang to life on the church grounds. The Evangelical Mission Church occupied the site from 1956-1968.

The Activity Center is part of the 153-acre Waterford Oaks County Park. The Oakland County Parks and Recreation Commission acquired the site in 1968.

Renovation of the sanctuary included conversion of the nursery into a kitchen and bathrooms into office space. After a major snowstorm damaged the building's roof in the mid-80s, another facelift and structural work took place.

The Activity Center hosts banquets, wedding receptions, business gatherings and other group functions for up to 400 people. The building features a dance floor and stage. The County of Oakland uses the Activity Center for personnel testing and meetings.

Known for its dance classes, the Activity Center overflowed with dances during the disco craze. Current popular classes include ballroom, square, belly, ballet and round dancing.

Additionally, golf, photography, dog obedience, driver's education and exercise classes are offered at the center year-round. An annual Woodcarver's Show attracts more than 1,500 individuals.

Waterford Oaks Activity Center is on Watkins Lake Road, between Pontiac Lake and Scott Lake Roads.

TABLE OF CONTENTS

Census	21
Equalized Valuation	24
History of Oakland County	25 & 26
Organization Chart — County	27
BOARD OF COMMISSIONERS	
Chairperson, Vice Chairperson	5 & 6
Committees	7
Members	5
COUNTY OFFICES	
Airports	6
Animal Control Division	6
Assignment Clerk (See Circuit Court Administrator)	6
Building Authority	6
Building Safety	6
Canvassers, Board of	6
Children's Services (See Probate Court Administrator)	11
Children's Village	6
Circuit Court Administrator	6
Circuit Court Judges	2
Clerk-Register of Deeds	6
Community Development	7 & 9
Community Mental Health Services	7 & 26
Cooperative Extension Service	7
Corporation Counsel	7 & 9
Court Administrator (See Circuit Court)	6
Cultural Affairs	7 & 9
Deferred Compensation Board	8
District Court Judges	3 & 4
Drain Commissioner	8
Economic Development Division	8
Election Commission	8
Election Scheduling Committee	8
Emergency Management Division	8
Employees Retirement Commission	8
Equalization Division	9
Executive, County	9
Food Service Sanitation Appeal Board	9
Friend of the Court	9
Health Officer	9
Huron Clinton Metropolitan Authority	10
Jury Commissioners	10
Juvenile Court (See Probate Court)	11
Library Board	10
Medical Care Facility	10
Medical Examiner	10
Mental Health Services (see Community Mental Health)	7 & 26
Parks and Recreation Commission	10, 18, 19, & 20
Personnel Appeal Board	10
Planning Division	10 & 30
Probate Court Administrator	11

TABLE OF CONTENTS (continued)

Probate Court Judges	2
Probation Department	11
Prosecuting Attorney	11
Public Administrators	11
Public Works, Dept. of	12
Real Estate Section (See Corporation Counsel)	7
Risk Management and Safety	12
Road Commission	12 & 29
Sanitary Code Appeal Board	12
Schools, Superintendent of	13
Sheriff	12
Social Services	12
Soil and Water Conservation	12
Solid Waste Management	13
Treasurer	13
Veterans Services	13
Water & Sewage Operations (see Public Works)	12
MAPS	
Board of Commissioners	22 & 23
Congressional	14
Oakland County	17
Oakland County Service Center	28
Parks & Recreation	18
State Representative	16
State Senate	15
NATIONAL OFFICERS	
United States Officials	1
United States Representatives	1
United States Senators	1
STATE OFFICERS	
Appeals Court	2
Officials	1
Representatives	1
Senators	1
Supreme Court	2
CITIES	
Auburn Hills	31
Berkley	31
Birmingham	31
Bloomfield Hills	32
Clarkston	32
Clawson	32
Farmington	33
Farmington Hills	33
Ferndale	33
Hazel Park	34
Huntington Woods	34
Keego Harbor	34
Lake Angelus	35
Lathrup Village	35

TABLE OF CONTENTS (continued)

Madison Heights	35
Northville	36
Novi	36
Oak Park	36
Orchard Lake Village	37
Pleasant Ridge	37
Pontiac	37
Rochester	38
Rochester Hills	38
Royal Oak	38
Southfield	39
South Lyon	39
Sylvan Lake	39
Troy	40
Walled Lake	40
Wixom	40

TOWNSHIPS

Addison	41
Bloomfield	41
Brandon	41
Commerce	42
Groveland	42
Highland	42
Holly	42
Independence	43
Lyon	43
Milford	43
Novi	43
Oakland	44
Orion	44
Oxford	44
Rose	45
Royal Oak	45
Southfield	45
Springfield	45
Waterford	46
West Bloomfield	46
White Lake	46

VILLAGES

Beverly Hills	47
Bingham Farms	47
Franklin	47
Holly	47
Lake Orion	47
Leonard	48
Milford	48
Ortonville	48
Oxford	48
Wolverine Lake	48

NATIONAL OFFICERS

President of the United States Bill Clinton
 Vice President Al Gore

Cabinet Members:

Secretary of Agriculture Mike Espy
 Attorney General Janet Reno
 Secretary of Commerce Ronald H. Brown
 Secretary of Defense Les Aspin
 Secretary of Education Richard W. Riley
 Secretary of Energy Hazel R. O'Leary
 Secretary of Health and Human Services Donna E. Shalala
 Secretary of Housing and Urban Development Henry Cisneros
 Secretary of the Interior Bruce Babbitt
 Secretary of Labor Robert B. Reich
 Secretary of State Warren M. Christopher
 Secretary of Transportation Federico Peña
 Secretary of Treasury Lloyd Bentsen
 Secretary of Veterans Affairs Jesse Brown

U.S. Senator Donald W. Riegle, Jr. (D)
 U.S. Senator Carl Levin (D)

U.S. Representatives:

8th District Bob Carr, East Lansing (D)
 9th District Dale E. Kildee, Flint (D)
 11th District Joe Knollenberg, Bloomfield Hills (R)
 12th District Sander Levin, Southfield (D)

STATE OFFICERS

State Capitol, P.O. Box 30013, Lansing, MI 48909

Governor John Engler (R)
 Lieutenant Governor Connie Binsfeld (R)
 Secretary of State Richard H. Austin (D)
 State Treasurer Douglas Roberts
 Attorney General Frank J. Kelley (D)

STATE SENATORS

State Capitol, P.O. Box 30036, Lansing, MI 48909

8th District Mat. J. Dunaskiss, Lake Orion (R)
 15th District Jack Faxon, Farmington Hills (D)
 16th District Michael J. Bouchard, Birmingham (R)
 17th District Dave Honigman, West Bloomfield Township (R)

STATE REPRESENTATIVES

State Capitol, P.O. Box 30014, Lansing, MI 48909

34th District John F. Freeman, Madison Heights (D)
 35th District David M. Gubow, Huntington Woods (D)
 36th District Maxine Berman, Southfield (D)
 37th District Jan C. Dolan, Farmington Hills (R)
 38th District Willis Bullard, Jr., Milford (R)
 39th District Barbara Dobb, Commerce (R)
 40th District John Jamian, Bloomfield Hills (R)
 41st District Shirley Johnson, Royal Oak (R)
 42nd District Greg Kaza, Rochester Hills (R)
 43rd District Charlie J. Harrison, Jr., Pontiac (D)
 44th District David N. Galloway, White Lake (R)
 45th District Penny M. Crissman, Rochester (R)
 46th District Tom Middleton, Ortonville (R)

MICHIGAN SUPREME COURT

Law Building, 2nd Floor, Lansing 48909

Michael F. Cavanagh, Chief Justice

Patricia J. Boyle

James H. Brickley

Robert P. Griffin

Charles L. Levin

Conrad L. Mallett, Jr.

Dorothy Comstock Riley

COURT OF APPEALS JUDGES DISTRICT 2

109 W. Michigan Ave., Lansing 48909

Martin M. Doctoroff, Chief Judge

Mark J. Cavanagh

E. Thomas Fitzgerald

Kathleen Jansen

Marilyn Kelly

Michael J. Kelly

John H. Shepherd

Clifford Taylor

CIRCUIT COURT JUDGES

1200 N. Telegraph, Pontiac 48341

Robert C. Anderson	858-0368
Steven N. Andrews	858-0360
David F. Breck	858-0335
Jessica R. Cooper	858-0337
Hilda R. Gage	858-5282
Barry L. Howard	858-5284
Richard D. Kuhn	858-0332
Denise K. Langford-Morris	858-0363
Fred M. Mester	858-0355
Rudy J. Nichols	452-2000
Francis X. O'Brien	858-0365
Vacant	858-0342
Gene Schnelz	858-5280
Edward Sosnick	858-0340
Robert L. Templin	858-0358
Deborah G. Tyner	452-2005

PROBATE COURT JUDGES

1200 N. Telegraph, Pontiac 48341

Barry M. Grant	858-0286
Eugene Arthur Moore	858-0250
Sandra G. Silver	858-0240
Joan E. Young	858-0289

DISTRICT COURT JUDGES, OAKLAND COUNTY, MICHIGAN

District	Name and Address	Telephone	Geographical Area
35th	James N. Garber John E. MacDonald 660 Plymouth Road Plymouth 48170459-4740	Oakland County portion of Northville City
43rd	Douglas J.M. Voss 305 E. Nine Mile Road Ferndale 48220 Joseph S. Agnello 43 E. Nine Mile Road Hazel Park 48030 Robert J. Turner 200 W. Thirteen Mile Road Madison Heights 48071547-8700547-3034583-1800	Cities of Ferndale, Hazel Park and Madison Heights
44th	Terrence H. Brennan Daniel Sawicki 211 Williams Street Royal Oak 48068 Probation Division546-7780546-1848	City of Royal Oak
45A	William R. Sauer 3338 Coolidge Highway Berkley 48072 Civil Division Criminal and Traffic Division544-3301544-3300	City of Berkley
45B	Marvin F. Frankel Benjamin J. Friedman 13600 Oak Park Boulevard Oak Park 48237 Civil Division Criminal and Traffic Division542-1219542-7042	Cities of Huntington Woods, Oak Park, Pleasant Ridge and Royal Oak Township
46th	Stephen C. Cooper Bryan H. Levy Susan M. Moiseev 26000 Evergreen Southfield 48076 Civil Division Misdemeanor/Felony Civil Infractions/Traffic/Parking354-9370354-9368354-9360	Cities of Lathrup Village, Southfield and Southfield Township
47th	Frederick L. Harris Marla E. Parker 32795 W. Ten Mile Road Farmington 48336 General Information Civil Division Probation Traffic/Criminal477-5630Ext 10Ext 19Ext 37Ext 23	Cities of Farmington and Farmington Hills
48th	Edward Avadenka Thomas W. Brookover Gus Cifelli 4280 Telegraph Road Post Office Box 3200 Bloomfield Hills 48302-3200647-1141	Cities of Birmingham, Bloomfield Hills, Keego Harbor, Orchard Lake and Sylvan Lake;

(continued on next page)

DISTRICT COURT JUDGES, OAKLAND COUNTY, MICHIGAN

District	Name and Address	Telephone	Geographical Area
48th	Civil Division	433-9343	Townships of Bloomfield and West Bloomfield
	Probation Dept.	433-9373	
50th	Leo Bowman Christopher C. Brown Louis E. Fairbrother William Waterman 70 N. Saginaw Pontiac 48342		City of Pontiac
	Civil Division	857-8090	
	Criminal Division	857-8027	
	Probation Dept.	857-8091	
	Traffic Dept.	857-8078	
51st	Robert W. Carr Kenneth H. Hempstead 5100 Civic Center Drive Waterford 48329	674-4655	Township of Waterford
52nd- (1st Div.)	Michael Batchik Harold M. Bulgarelli Brian W. MacKenzie 1010 E. West Maple Walled Lake 48390		Cities of Novi, South Lyon, Walled Lake and Wixom; Townships of Commerce, Highland, Lyon, Milford, Novi, Rose and White Lake
	Civil Division	624-6580	
	Criminal Division	624-0260	
	Probation Division	624-2244	
	Traffic Division	624-0011	
52nd- (2nd Div.)	Gerald E. McNally 5850 Lorac, Suite 1 P.O. Box 169 Clarkston 48347		City of Clarkston; Townships of Brandon, Groveland, Holly, Independence, and Springfield
	Civil Division	625-4994	
	Criminal Division	625-4888	
	Violations Bureau	625-4880	
52nd- (3rd Div.)	Ralph Nelson James P. Sheehy Robert L. Shipper 135 Barclay Circle Rochester Hills 48307	853-5553	Cities of Auburn Hills, Lake Angelus, Rochester and Rochester Hills; Townships of Addison, Oakland, Orion and Oxford
52nd- (4th Div.)	William E. Bolle Dennis C. Drury Michael A. Martone 500 West Big Beaver Road Troy 48084		Cities of Clawson and Troy
	Civil Division	528-0404	
	Criminal Division	528-0400	

1993-1994 OAKLAND COUNTY BOARD OF COMMISSIONERS

Commissioners Office Phone Number: 858-0100

Name and Address	District Number	Phone Number
Dennis M. Aaron (D) 10150 Dartmouth, Oak Park 48237	23	or 543-0587 961-1625
***Chairperson, Larry P. Crake (R) 100 S. Cass Lake Road, Waterford 48328	4	or 683-1777 682-6300
Sue Ann Douglas (R) 1228 Main Street, Rochester 48307	8	651-1255
John P. Garfield (R) 1347 Ruby, Rochester Hills 48309	9	852-7199
Marilynn E. Gosling (R) 3914 W. Orchard Hill, Bloomfield Hills 48304	14	646-1029
Donna R. Huntoon (R) 9785 Crosby Lake Road, Clarkston 48346	2	625-1746
Donald W. Jensen (R) 1233 Maryland Blvd., Birmingham 48009	15	647-5830
**Vice-Chairperson, Ruth A. Johnson (R) 8500 Gail Drive, Holly 48442	1	634-1701
Eugene Kaczmar (D) 31430 Meadows, Madison Heights 48071	24	585-3733
Jeff Kingzett (D) P.O. Box 432038, Pontiac 48343	7	340-9887
Thomas A. Law (R) 31640 Northwestern Hwy., Farmington Hills 48334	13	855-2505
John P. McCulloch (R) 1609 Cedar Hill Drive, Royal Oak 48067	22	398-7527
Ruel E. McPherson (D) 23439 Davey, Hazel Park 48030	25	545-7061
Kevin A. Miltner (R) 1660 Cass Lake Road, Suite 102, Keego Harbor 48320	5	683-9065
David L. Moffitt (R) 30600 Telegraph Road, Suite 3250 Bingham Farms 48025	18	644-0880
Lillian Jaffe Oaks (D) 16500 North Park Drive, Apt. 1211, Southfield 48075	21	557-3444
Lawrence A. Obrecht (R) 1437 Nakomis, Lake Orion 48362	3	693-8231
Charles E. Palmer (R) 459 John M, Clawson 48017	16	or 435-9391 585-0077
* Lawrence R. Pernick (D) P.O. Box 431 Southfield 48037-0431	20	352-5140
Dennis N. Powers (R) 2254 E. Highland, Highland 48356	10	887-8333
Hubert Price, Jr. (D) 583 Pearsall, Pontiac 48341	6	334-6164
Kay Schmid (R) 28105 Summit Drive, Novi 48377	17	349-0099
Shelley G. Taub (R) 1959 Shore Hill Drive, Bloomfield 48302	12	858-8870
Donn L. Wolf (R) 23826 Barfield Drive, Farmington Hills 48336	19	761-4614
Vacancy	11	
***Chairperson	**Vice Chairperson	*Former Chairperson

COUNTY OFFICERS

- Airport Committee, County Donn L. Wolf, Chairperson
 Lillian Jaffe Oaks, Vice-Chairperson
 Dennis N. Powers, Secretary
 Kenneth R. Patterson, Manager of Aviation
 FAX (313) 666-3341
 Oakland-Pontiac Airport (I) 666-3900
 Oakland-Troy Airport 280-1300
 2672 Industrial Row, Troy 48084
- Animal Control Div. (M) Sandra L. Gay, Manager 858-0863
- Building Authority (A) Aleck Capsalis, Chairperson
 Harry Lapham, Sr., Vice-Chairperson
 Gerald Kosmensky, Secretary
 L. Brooks Patterson, County Executive
 C. Hugh Dohany, Treasurer
- Building Safety (K) Edward Wydra, Chief 858-0931
- Canvassers, Board of (A) Barbara A. Brinker
 Sarah C. Dixon
 Ann M. Edwards
 Katherine E. Jacobs
 Lynn D. Allen, Clerk 858-0560
- Children's Village (A) Michaele K. Worrell, Manager 858-1164
 Peter D. Balzerini, Administrator
 Intake Treatment Services 858-1160
 Patricia A. Lahar, Administrator
 Residential Treatment Services 858-1162
 General Information 858-1150
- Circuit Court Administrator -
 Judicial Assistant (A) Judith K. Cunningham 858-0349
 Margaret Horenstein, Deputy 858-0347
 Mary Jane Rigonan,
 Assignment Clerk 858-0350
 Carolyn Chavez, Jury Clerk 858-0029
 Angela Jordan, Pretrial Services 858-0166
- * Circuit Court Judges (A) (See Page 2)
- Clerk-Register of Deeds (A) Lynn D. Allen 858-0560
 G. William Caddell,
 Deputy Clerk-Register 858-0561
 Stephanie Schroeder,
 Chief Deputy Clerk 858-0586
 Sue Payne, Chief Deputy Register 858-0610
 Janet F. Stickley, Director of Elections 858-0563
 Thomas M. Smith, Plat Engineer 858-1447
- * Commissioners, Board of (A) Larry P. Crake, Chairperson
 Ruth A. Johnson, Vice-Chairperson
 Lynn D. Allen, Clerk
 Suzette Vogt, Administrative Assistant
 James M. Brennan, Program Evaluation
 and Operations Analysis
 Joseph B. Mullen, Legislative Agent 858-0100

OAKLAND COUNTY BOARD OF COMMISSIONERS COMMITTEES FOR 1993
(First named is Chairperson, second named is Vice-Chairperson,
third named is minority Vice-Chairperson)

Finance	McCulloch, Obrecht, Price, Gosling, Jensen, Wolf, Huntoon, Palmer, Pernick, Kaczmar	
General Government	Jensen, Wolf, Aaron, Law, Schmid, Taub, McPherson, Oaks, vacancy	
Personnel	Gosling, Law, Kingzett, Moffitt, Douglas, Miltner, Price, vacancy	
Planning & Building	Palmer, Moffitt, Kaczmar, Johnson, Douglas, Schmid, Garfield, Powers, Oaks, Kingzett	
Public Services	Obrecht, Huntoon, McPherson, Miltner, Garfield, Powers, Taub, Aaron	
Community Development (A) ..	Richard A. Southern, Manager	858-0493
Community Mental Health Services (A)		
Board Members:	Nat Pernick M.D., J.D.	
James E. Defebaugh, Chairperson	Joseph Minjoe	
John E. Madole, Vice-Chairperson	Hubert Price, Jr.	
Aleck Capsalis	Robert Swanson	
Jean Chamberlain	Richard Cooper, Director	
Marilynn E. Gosling	Peter Bickelmann, Manager	
Charles Palmer	858-1210
Cooperative Extension Service (A)	Wayne H. Nierman, Ph.D., County Extension Director	858-0885
	Greg Patchan, Horticulture	858-0887
	Elaine Paradis, Home Economics	858-0895
	Lois Thieleke, Home Economics	858-0897
	Sylvia Treitman, Food & Nutrition	858-0904
	Agriculture	858-0887
	4-H Youth Programs	858-0889
Corporation Counsel (A)	Jack C. Hays	858-0550
	Linda E. Wasielewski, First Assistant	
	Michael D. Blaszczyk, Assistant	
	Karl W. Randall, Assistant	
	John F. Ross, Jr., Assistant	
	Donald F. Slavin, Assistant	
	Gordon R. Wyllie, Assistant	
	Real Estate Section:	
	Patrick D. Campbell	858-5380
	Donna Patterson	858-5402
Cultural Affairs (A)	Steve Weikal, Coordinator ..	858-0415 or 858-0730

Deferred Compensation

Board (A) Jack C. Hays, Chairperson
 C. Vincent Luzi, Vice-Chairperson
 Robert Daddow
 Larry P. Crake
 C. Hugh Dohany, Secretary-Treasurer
 Douglas J. Williams, Plan Administrator 858-0623

- Drain Commissioner (H) (K) George W. Kuhn 858-0958
 Robert H. Fredericks, Chief Deputy
 Glen Yrjanainen, Deputy & Chief Engineer, Drain/Lakes
 William E. Klockow, Chief Engineer, Water/Sewer

Economic Development

Division (A) Jeffrey A. Kaczmarek, Manager 858-0732
 Oakland County Economic
 Development Corporation Nancy McConnell, Chairperson
 Jay B. Shah, Vice-Chairperson
 Pat Jacobs, Secretary
 C. Hugh Dohany, Treasurer

Oakland County Local
 Development Company Patricia R. Botkin, Chairperson
 W. Peter Kramer, President
 Fred C. Seeley, Vice-President
 Jeffrey A. Kaczmarek, Secretary
 C. Hugh Dohany, Treasurer

Election Commission (A) Barry M. Grant, Chairperson
 Lynn D. Allen, Clerk-Secretary
 C. Hugh Dohany, Treasurer

Election Scheduling

Committee Willie M. Redmond, Pontiac School
 Board Member
 Katy Mann, Keego Harbor City Clerk
 C. Elaine Skarritt, Milford Township Clerk
 Lynn D. Allen, Clerk 858-0560

Employees Retirement

Commission (A) Dennis L. Murphy, Chairperson

Members:

Shane F. Murphy,
 Vice-Chairperson
 G. William Caddell James H. VanLeuven, Jr.
 Larry P. Crake C. Hugh Dohany, Treasurer & Member
 H. Lloyd Hampton Douglas J. Williams, Secretary
 Daniel T. Murphy Jack C. Hays, Corporation Counsel
 Charles Ross 858-0623

EMS/Emergency

Management Division (A) Gail A. Novak, Manager 858-5300
 Colleen L. Dailey, Assistant 858-5300
 Community Right to Know 858-5371
 Emergency Management 858-5300

Equalization Division (A)	Don L. Bailey, Manager	858-0740
	Richard A. Caldwell, Administrator Personal Property Auditors, Statistics & Tax Description	
	Robert O. Vandermark, Administrator Real Property	858-0776
* Executive, County (A)	L. Brooks Patterson	858-0484
	John L. Grubba, Deputy County Executive	858-0485
	Douglas J. Williams, Deputy County Executive	858-0497
	Jean Chamberlain, South End Government Liaison	858-1685
	Delores Conaway, Coordinator, Executive Office	452-9772
	Robert J. Daddow, Director, Management and Budget	858-0490
	Robert E. Dustman, Public Information Officer	858-1048
	Jack C. Hays, Director, Corporation Counsel	858-0550
	Rebecca E. Holowicki, Director, Community and Minority Affairs	858-1047
	C. Vincent Luzzi, Director, Personnel	858-0542
	Kenneth Rogers, Director, Community and Economic Development	858-0278
	David W. Ross, Director, Facilities Management	858-0160
	Mounir W. Sharobeem, Director, Institutional and Human Services	858-1293
	Carmen V. Talbot, State of Michigan Government Liaison	858-1422
	J. David VanderVeen, Director, Central Services	858-0516
	Steve Weikal, Cultural Affairs Coordinator	858-0415
	Michael W. Zehnder, Director, Public Services	858-1074
Food Service Sanitation Appeal Board	Marilynn E. Gosling, Chairperson Gerald Carpenter, Vice-Chairperson Thomas J. Gordon, Ph.D. Ruel McPherson Edward O'Rourke Theodore Spehar Ronald Grimes, Administrator Environmental Health Services	858-1320
Friend of the Court (A)	Joseph G. Salamone	858-0424
	Kim Bateman, Chief Assistant	
Health Officer (A) (F)	Thomas J. Gordon, Ph.D., Manager	858-1410

Huron Clinton Metropolitan

Authority - Commission	Washtenaw	- Robert W. Marans, Chairperson	
	Livingston	- James Young, Vice-Chairperson	
	Macomb	- Thomas S. Welsh, Treasurer	
	Governor		
	Appointee	- Harry E. Lester	
	Governor		
	Appointee	- Mrs. Jeanette S. Weiss	
	Oakland	- James Clarkson	
	Wayne	- William E. Kreger	
	William P. Sherman, Director		
	Administrative Office:		
	13000 High Ridge Dr.		
	P.O. Box 2001		
	Brighton, MI 48116-8001		
	(313) 227-2757 or Toll Free No. 1-800-47-PARKS		
Jury Commissioners (A)	Mariann Hampton		858-0378
	Flora Whan		858-0593
	Vacancy		
Library Board (A)	C. Hugh Dohany, Chairperson		
	Robert Gaylor, Secretary		
	Hon. Steven Andrews	Robert A. Marten	
	Donald W. Jensen	Robert Tera	
	Dr. William Keane		
	Joe Mullen, Library Coordinator		858-0111
	Phyllis Jose, County Librarian-		
	Reference Library Director		858-0738
	Richard L. Beer, Director		
	Law Library		858-0012
Medical Care Facility (A)	James A. Eddy, Administrator		
	Shirla F. Kugler, Assistant Administrator		
	Antonio Nucum, M.D., Medical Director		
	Caroline Parker, R.N., Nursing Director		
	Wanda Ellis, R.N., Admissions Officer		
			858-1415
Medical Examiner (A)	Ljubisa J. Dragovic, M.D.,		
	Chief Forensic Pathologist/Medical Examiner		
			858-4046
	William MacDonald, Administrator		858-4045
	Office Information		858-5097
Parks & Recreation			
Commission (E)	Pecky D. Lewis, Jr., Chairperson		
	Jean M. Fox, Vice-Chairperson		
	Richard D. Kuhn, Jr., Secretary		
	Fred Korzon		
	George W. Kuhn	John E. Olsen	
	Thomas A. Law	Roy Rewold	
	Rudy Lozano	Richard Skarritt	
	Ralph Richard, Manager		858-0906
	Jon J. Kipke, Assistant Manager		
Personnel Appeal Board	Donald W. Jensen, Chairperson		
	John Madole, Vice-Chairperson		
	Jean Milton		
	David L. Moffitt		
	John W. Graham		
Planning Division (A)	Philip W. Dondero, Manager		858-0720
	David R. Hay, Statistical Information Officer		
	Adrian Haas, Map Sales		858-0723

Probate Court Administrator —
Probate/Juvenile

Register (A) (J)	Barbara A. Consilio	858-0950
	William P. Bartlam, Probate Court Counsel	858-0977
	John L. Cooperrider, Business Manager	858-0256
	Hugh Dean, Manager, Estates and Mental Health Services	858-0282
	Pamela Howitt, Ph.D., Manager, Training and Clinical Services	858-0066
	James McFarland, Manager, Field Services	858-0247
	Estates and Mental Health Division General Information	858-0260
	Juvenile Division General Information	858-0112

Probation Dept., Adult (A) (B) ...	Darlene C. Schimmel Chief Probation Officer	858-0300
------------------------------------	--	----------

* Prosecuting

Attorney (D) (J)	Richard Thompson	858-0656
	Gerald Poisson, Chief Assistant	

Assistant Prosecutors:

Mary Andrews	Beth Hand	John Pallas
Lisa Asadoorian	Robert Hedges	Donna Pendergast
Kathryn Barnes	Stacy Isles	Jason Pernick
Marc Barron	Janice Kabodian	Sara Pope
Mary Ellen Brennan	Roman Kalytiak	Thomas Richards
Richard Browne	Deborah Kavulich	Paul Rinaldi
Lawrence Bunting	Debra King	E. Reid Roe
Steven Cabadas	Larence Kozma	Lynda Rubin
Donald Campbell	Christine Krzeminski	Michael Salhaney
David G. Case	Mary Kucharek	Margaret Scott
Kelly Chard	Elizabeth A. Kulesz	Sandra Scott
Matthew Chodak	Mary Ann Larkin	J. Randall Secontine
Brett Chudler	Twila Leigh	Charles Semchena
Edward J. Cibor	Anica Letica	Errol Shifman
R. Charles Claus	Paul Lochner	John Slevin
Raymond Correll	Steven Lynch	Sydney Smith
Ronald Covault	Pamela Maas	Charles Spiekerman
Peter Cravens	James Marcinkowski	Paul Stablein
Denise Cremer	Cheryl Mathews	Mary Stiel
Margaret Davis	Genevieve Mazur	Lisa Tomko
Diane Dickow	James F. McCarthy	Gregory J. Townsend
Paul Edwards	Kathryn McCarthy	Gary Tunis
Carol Garagiola	Stephen Meads	Karen Urbin
Carlo Ginotti	Frederick Miller	Steven Vitale
Michael Godfrey	Thaddeus Morgan	Paul Walton
Thomas Grden	Thomas Murray	Robert Williams
Lisa Green	Kirsten Nielson	Kimberly Wilson
James Halushka	Daniel O'Brien	Brian Zubel
Scott Hamilton	John O'Brien II	

Public Administrators	Stephen C. Albery	Bloomfield Hills 858-2303
	Patricia F. Donaldson	Bloomfield Hills 645-2345
	Paul E. Dufault	Royal Oak 399-7272
	Irving B. Feldman	Southfield 352-1100
	Stanley G. Feldman	Southfield 357-3900
	Roberta V. Hughes	Southfield 356-0950
	Howard T. Linden	Southfield 358-4545
	Lynn Beatrice Rose	Birmingham 357-3900

Public Works, Dept. of (K)	David W. Ross, Director	858-0160
	Donald L. Malinowski, P.E., Manager	
	Facilities Engineering Division	858-0125
	Richard C. Johnston, Manager - Facilities,	
	Maintenance & Operations Division	858-0162
	James E. Porter, P.E., Manager	
	Water & Sewage Operations Division	858-1119
Risk Management and Safety (A)	Stanley B. Fayne, Risk Manager	858-5264
	Worker's Compensation	858-1588
Road Commission (C) (L)		645-2000
	Rudy D. Lozano, Chairperson	
	John E. Olsen, Vice-Chairperson	
	Richard V. Vogt, Commissioner	
	Brent O. Bair, Managing Director and Secretary/Clerk	
	Gerald M. Holmberg, Deputy Managing Director and County Highway Engineer	
	James Barbaresso, Director of Planning and Development	
	Patrick Carty, Director of Legal	
	John Joy, Public Information Officer	
	Deborah Mathews, Deputy Secretary-Clerk	
	Dennis A. Lockhart, Director of Finance	
	Doris Mitchell, Director of Personnel	
	Kent Rubley, Director of Engineering	
	C. Hugh Dohany, Treasurer	645-9530
(C) David Allyn, Director of Traffic- Safety		858-4820
(C) James Dunleavy, Director of Highway Maintenance		858-4881
(C) William McEntee, Director of Permits and Environmental Concerns		858-4835
(C) Michael Richardson, Director of Citizen Services		858-4804
(C) George Suarez, Director of Central Operations		858-4798
Sanitary Code Appeal Board	Edward O'Rourke, Chairperson	
	Ruel McPherson, Vice-Chairperson	
	Gerald Carpenter	
	Marilynn E. Gosling	
	Theodore Spehar	
	Ronald Grimes, Administrator	
	Environmental Health Services	858-1320
* Sheriff (A)	John F. Nichols	858-5008
	Billy J. Nolin, Undersheriff	858-5002
Social Services (N)	Gale R. Colwell, Chairwoman	
	Clarence D. Green, Ph.D., Vice-Chairman	
	Michael A. Goddard	
	Booker T. Dennis, Director	858-1502
	Gerald W. Hall, Deputy Director	858-1505
	District I Beverly Knight, Manager	858-4200
	District II Donald Dersnah, Manager	583-8700
	District III Richard Holmes, Manager	669-7600
	District IV Virginia Williams, Manager	857-8700
	District V Melvin Kaufman, Manager	858-1506
Soil and Water Conservation District	Harold Mitchell, Chairperson	
	7151 Ortonville Road, Suite 205, Clarkston 48346	620-0863 or 620-0763

Solid Waste Management (K)	Roger J. Smith, P.E., Deputy Director	858-1532
Superintendent of Schools	William G. Keane, Ed.D	858-2121
	Herman Dick, Ed.D., Deputy Superintendent	
	Rick Simonson, Assistant Superintendent of State/Federal Affairs	
	Joseph Flora, Ed.D., Director of Personnel	
	Sandra Hendin, Controller	
	2100 Pontiac Lake Road, Waterford 48328	
• Treasurer (A)	C. Hugh Dohany	858-0623
	Patrick M. Dohany, Chief Deputy	858-0623
	Arthur Halsey, Chief-Treasurer Accounting	858-0621
	James VanLeuven, Chief-Tax Administration	858-0611
Veterans Services (A) (J)	Carl A. Pardon, Manager	858-0785
	Diana Calvin, Supervisor — Counseling Unit 1	
	John (Jack) Becher, Supervisor — Counseling Unit 2	
	Royal Oak Branch Office	
	542-0220 or 644-3499
	Soldiers Relief Commission:	
	Thelma Cannon	
	Arthur A. Gale	
Veterans, Michigan Trust Fund (A) (J)	Pontiac	858-1830
	Royal Oak	542-5090

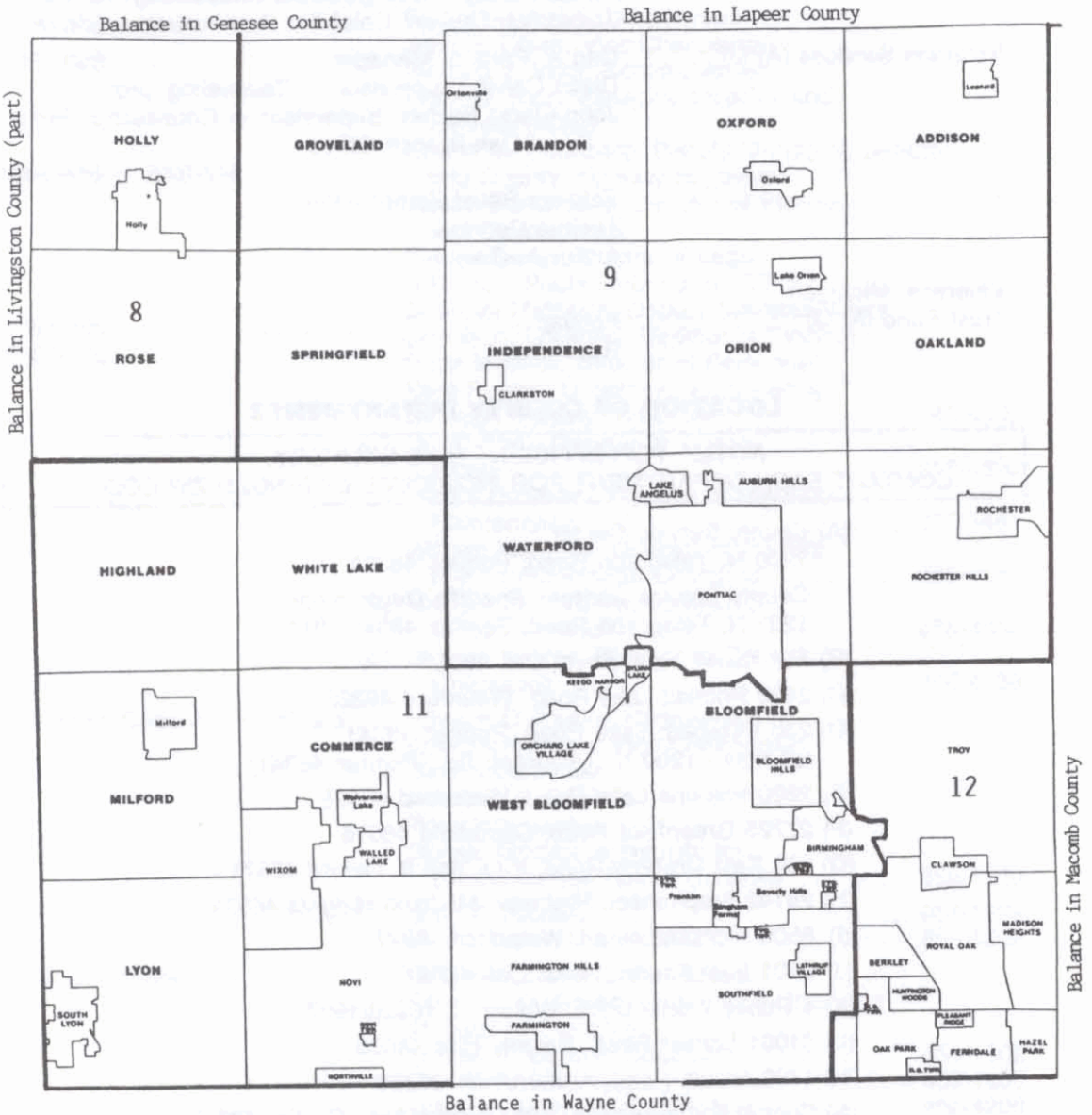
LOCATION OF COUNTY DEPARTMENTS

NOTE: FOR EFFICIENT MAIL DELIVERY,
CONTACT EACH DEPARTMENT FOR INDIVIDUAL EXTENDED ZIP CODE.

- (A) County Service Center
1200 N. Telegraph Road, Pontiac 48341
County Service Center - Sheriff's Department
1201 N. Telegraph Road, Pontiac 48341-1044
- (B) 111 South Troy, Royal Oak 48067
- (C) 2420 Pontiac Lake Road, Waterford 48328
- (D) 230 Elizabeth Lake Road, Pontiac 48341
(all mail - 1200 N. Telegraph Rd., Pontiac 48341)
- (E) 2800 Watkins Lake Road, Waterford 48328
- (F) 27725 Greenfield Road, Southfield 48076
- (G) 930 East Drahner Road, P.O. Box 9, Oxford 48371
- (H) 29142 Stephenson Highway, Madison Heights 48071
- (I) 6500 Highland Road, Waterford 48327
- (J) 2401 East Fourth, Royal Oak 48067
- (K) 1 Public Works Drive, Waterford 48328-1907
- (L) 31001 Lahser Road, Beverly Hills 48025
- (M) 1700 Brown Road, Auburn Hills 48326
- (N) Central Administration - 196 Oakland Ave., Pontiac 48342
DISTRICT I - 1125 N. Perry, Pontiac 48340
DISTRICT II - 31170 John R., Madison Heights 48071
DISTRICT III - 195 Ladd Road, Walled Lake 48390
DISTRICT IV - 235 N. Saginaw St., Pontiac 48342
DISTRICT V - 196 Oakland Ave., Pontiac 48342

* Elected Officials

U.S. CONGRESSIONAL DISTRICTS

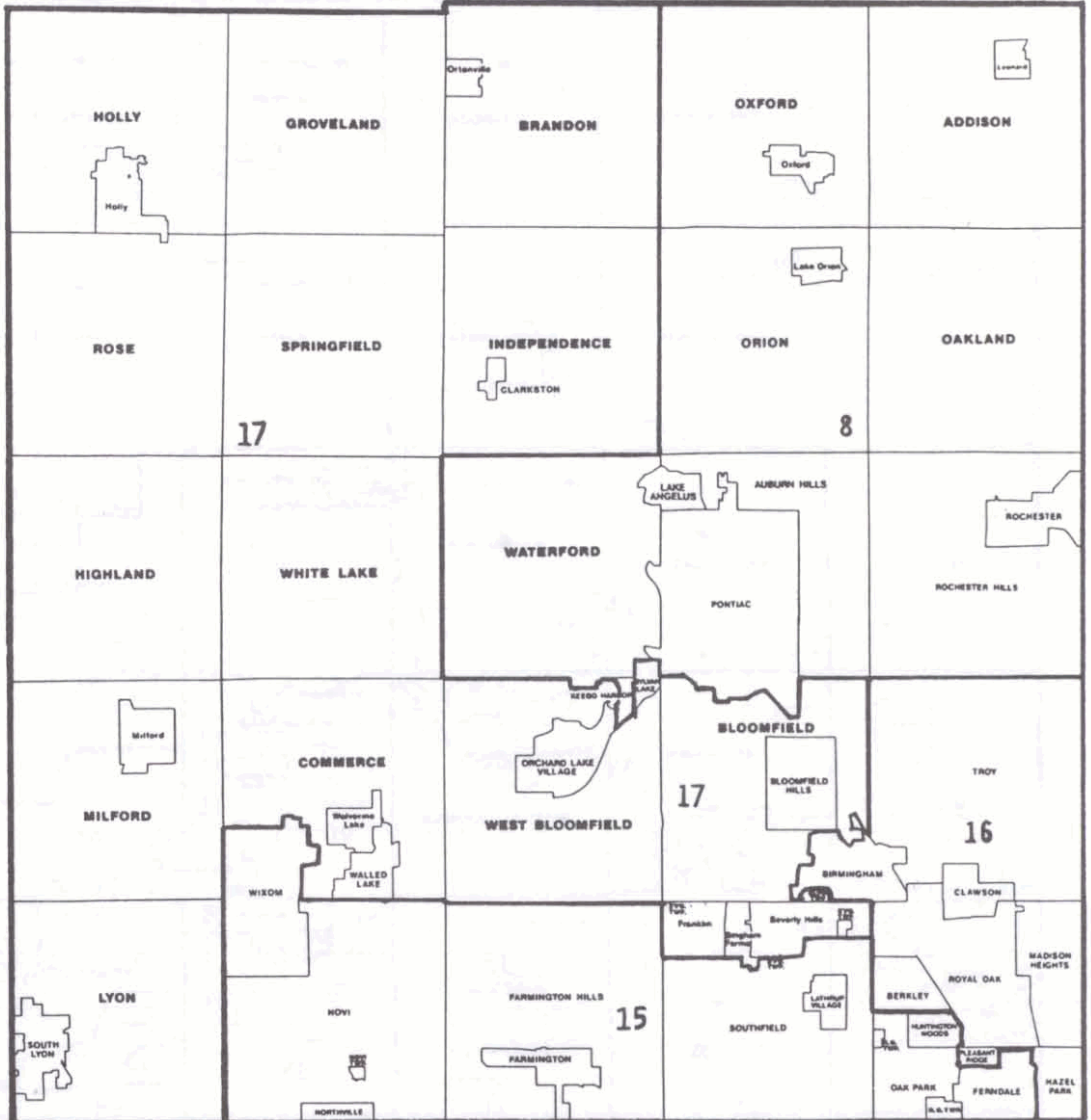


CITY
Village
TOWNSHIP

OAKLAND COUNTY
MICHIGAN
Oakland County Planning Division

JANUARY 1993

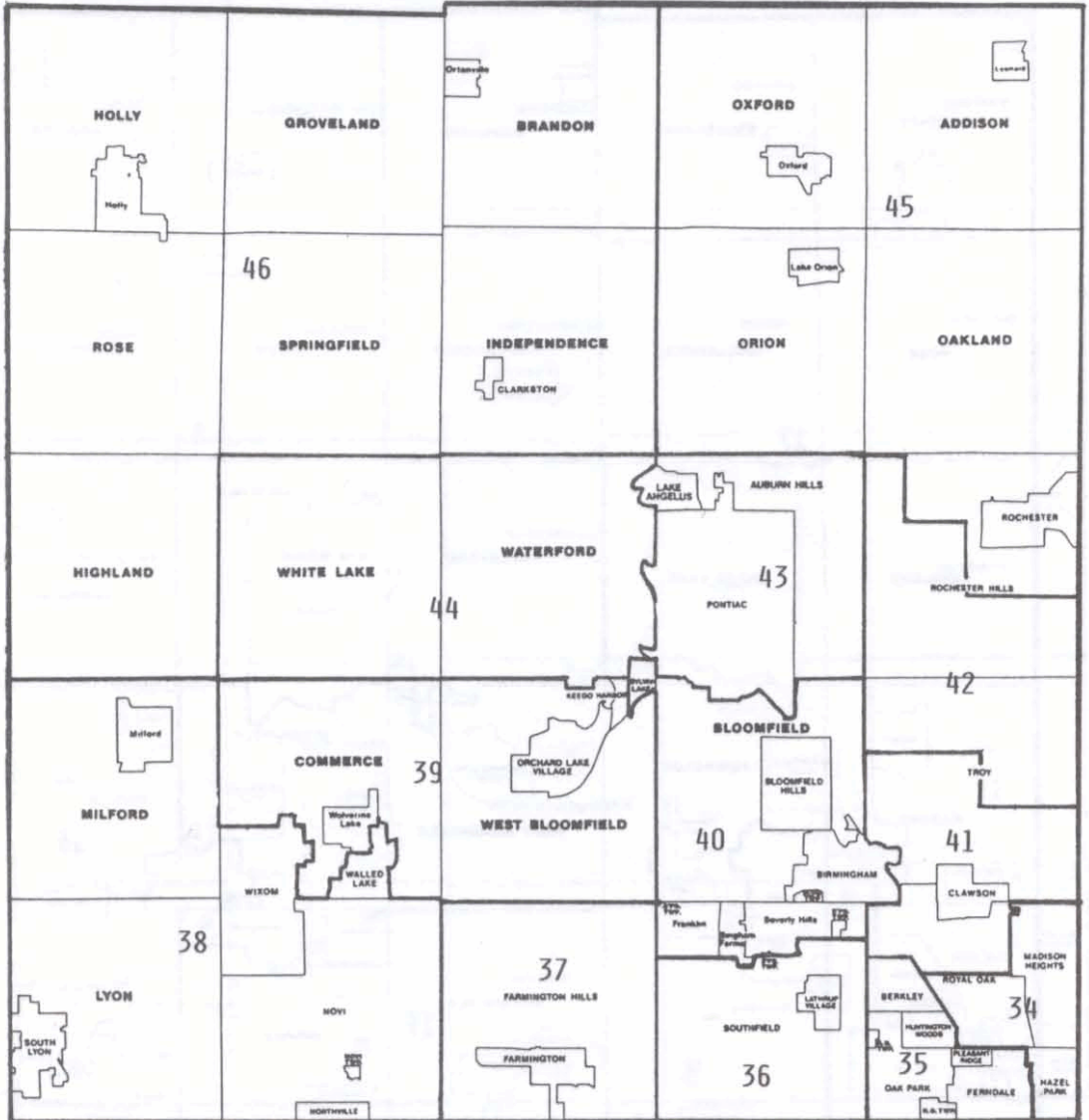
STATE SENATE DISTRICTS



CITY
Village
TOWNSHIP

OAKLAND COUNTY
MICHIGAN
Oakland County Planning Division

STATE REPRESENTATIVE DISTRICTS

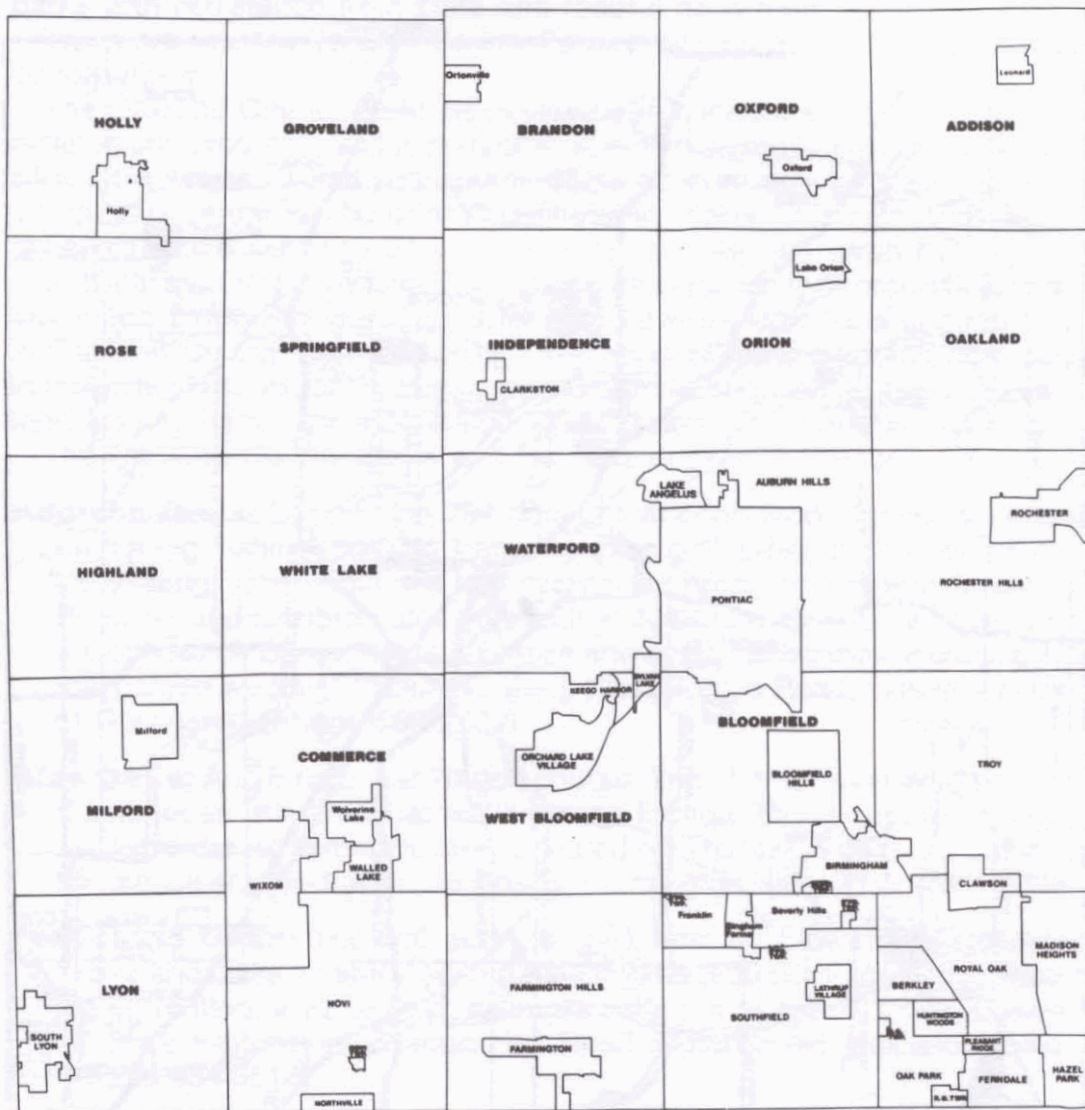


CITY
Village
TOWNSHIP

JANUARY 1993

OAKLAND COUNTY
MICHIGAN
Oakland County Planning Division

OAKLAND COUNTY, MICHIGAN



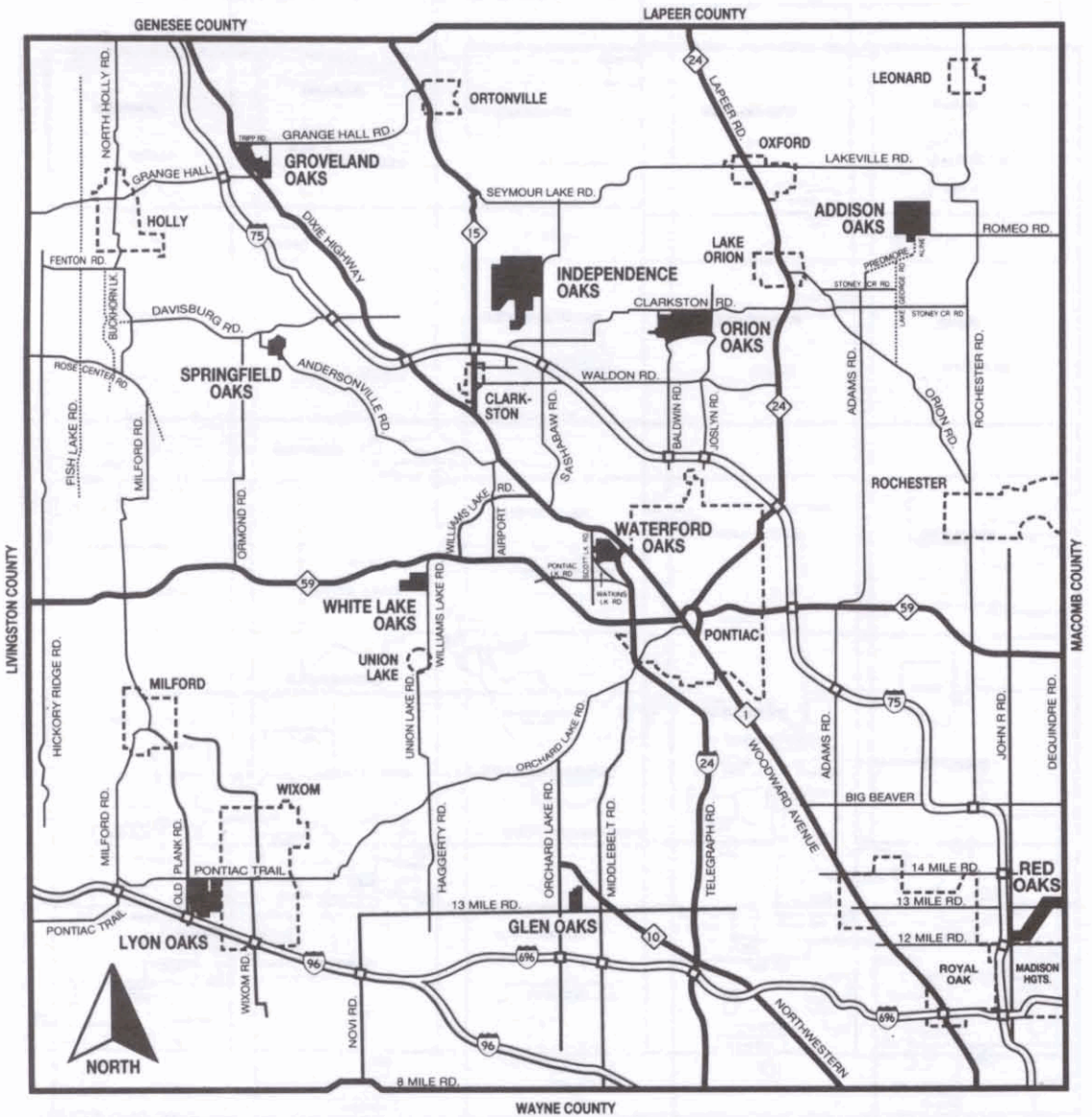
CITY
 Village
 TOWNSHIP

OAKLAND COUNTY
 MICHIGAN
 Oakland County Planning Division

JANUARY 1993

OAKLAND COUNTY PARKS

STATE DIVISION INTO FIVE DISTRICTS



OAKLAND COUNTY PARKS AND RECREATION COMMISSION — PONTIAC, MICHIGAN

OAKLAND COUNTY PARKS AND RECREATION COMMISSION YOUR NATURAL CHOICE FOR 25 YEARS (1966-1993)

In 27 years, the Oakland County Parks and Recreation Commission has experienced phenomenal growth and introduced innovative forms of recreation to the people of Oakland County.

Every year, nearly 1.5 million people visit the Oakland County Parks.

Throughout the years, the residents of Oakland County have supported the parks system, renewing a one-quarter mill tax five times.

Since 1966, more than 5,000 acres of land have been acquired by the county parks with assistance from state and federal governments.

There are now ten Oakland County Parks providing year-round recreational opportunities.

The Oakland County Parks have also been a leader in innovative leisure facilities and programs, including two wave-action swimming pools, giant water slides, the country's first year-round, dome-covered driving range, a nature interpretive center, an outdoor amphitheater, therapeutic recreation for individuals with disabilities and a community mobile recreation fleet.

In 1983, the Oakland Parks Foundation was created by a group of citizens interested in preserving and enhancing parks and recreational opportunities in Oakland County. The non-profit foundation accepts gifts and donations in the form of grants, cash, trusts, land and other bequests to assist the Oakland County Parks and Recreation Commission in carrying out its goals.

The Oakland County Parks and Recreation system includes:

Addison Oaks: Located on 794 acres of wooded land. Activities include swimming, fishing, boating, camping, disc golf, cross-country skiing and ice skating. Use Addison's trail system for hiking and mountain biking. Primitive and modern campsites with water and electricity are available. A Conference Center hosts business and social gatherings, including formal garden weddings. Situated along West Romeo Road, nine miles north of Rochester. (Phone 693-2432).

Glen Oaks: An 18-hole, par 70-golf course. The 124-acre site also features a clubhouse with banquet facilities and lounge. Cross-country skiing is available during winter months. Located on Thirteen Mile Road between Middlebelt and Orchard Lake Roads, Farmington Hills. (Phone 851-8356).

Groveland Oaks: The 360 acres of park land on Stewart Lake provide Groveland Oaks a natural setting for camping (600 sites). Activities including swimming, a waterslide, fishing, boating, and nature study. Located off Dixie Highway at Grange Hall Road in northwest Oakland County. (Phone 634-9811).

Independence Oaks: This 1,088-acre site offers boating and fishing in 68-acre Crooked Lake, swimming, hiking, nature study, cross-country skiing and other winter sports. Year-round nature interpretive programs are conducted by naturalists. A nature center offers exhibits and facilities for educational programs. The Cohn Amphitheater, made possible through the Oakland Parks Foundation, was dedicated in 1987. A hard-surfaced All Visitor Trail is used by individuals with disabilities. Located on Sashabaw Road, 2½ miles north of I-75. (Phone 625-0877).

(continued on next page)

Lyon Oaks: Acquired in 1992, this environmentally sensitive site is home to Great Blue Herons that return to the 672-acre park each spring. As many as 300 nests have been counted. Future development plans may include use as an environmental education resource, and activities such as hiking and cross-country skiing. Lyon Oaks is located in Lyon Township. The property is bordered by Pontiac Trail, Old Plank Road and I-96. (Phone the Administrative offices, 858-0906)

Orion Oaks: Orion Oaks' 927 acres remain undeveloped with the exception of the installation of perimeter fencing, small parking areas, and a dock off Joslyn Road. Lake Sixteen can be used for boating and fishing. Limited hiking and cross-country ski trails are also available. (Phone the Administrative Offices, 585-0906)

Red Oaks: In Madison Heights is a **Waterpark** with a wave-action swimming pool and three-flume waterslide. The waterpark on 13 Mile Road also features a deck and lawn area for sunbathing, picnic facilities, a sun shelter, bath house and concession building. The 9-hole, par-35 **golf course** is located on John R Road between 12 and 13 Mile Roads in Madison Heights. Across John R is a **sports village** with indoor and outdoor driving ranges, mini-car track, batting cages, adventure golf and children's playscape. (Phone 541-5050, Golf Course; 548-1857, Sports Village or 585-6990, Waterpark)

Springfield Oaks: The Springfield Oaks complex includes a challenging 18-hole championship golf course and a multi-purpose Activities Center for banquets, receptions, concerts, shows, 4-H events and indoor sports. The park also includes two outdoor horse arenas for exhibitions, rodeos and special events. Springfield Oaks is on Andersonville Road, Davisburg. (Phone 625-8133, Activities Center or 625-2540, Golf Course)

Waterford Oaks: A 154-acre park, Waterford Oaks is the site of the Commission headquarters. It also features a tennis complex with eight courts, platform tennis, horseshoes pits, beach volleyball, shuffleboard courts, and a children's playscape. Michigan's first wave pool creates gently rolling waves for swimmers and features a giant double waterslide. The Activity Center is popular for weddings, receptions, recreation programs, banquets and parties. The center offers numerous classes such as dancing, dog obedience and creative arts. Future development plans include a refrigerated toboggan run slated to open by 1994. Waterford Oaks is located in Waterford on Watkins Lake Road. (Phone 858-0913, Activity Center or 858-0906, Administrative Offices)

White Lake Oaks: At this 18-hole, par-70 golf course, facilities include a clubhouse with locker rooms, a pro shop, golf cart rental and a restaurant. A private room accommodates up to 250 persons for private parties. White Lake Oaks is located on South Williams Lake Road off M-59, near Pontiac. (Phone 698-2700)

Administration Building located at Waterford Oaks County Park — **Phone 858-0906.**

OAKLAND COUNTY CENSUS

	1970	1980	1990
Oakland County	907,871	1,011,793	1,083,592
Addison Township	2,431	4,184	4,785
** Leonard Village	378	423	357
Auburn Hills City	—	—	17,076
Avon Township	24,513	40,779	—
Berkley City	21,879	18,637	16,960
Birmingham City	26,170	21,689	19,997
Bloomfield Hills City	3,672	3,985	4,288
Bloomfield Township	42,788	42,876	42,473
Brandon Township	3,830	8,336	10,799
** Ortonville Village	983	1,190	1,252
Clawson City	17,617	15,103	13,874
Commerce Township	14,556	18,789	22,228
** Wolverine Lake Village	4,301	4,968	4,727
Farmington City	10,329	11,022	10,132
Farmington Township	46,767	—	—
Quakertown Village	837	—	—
Wood Creek Farms Village	1,090	—	—
Farmington Hills City	—	58,056	74,652
Ferndale City	30,850	26,227	25,084
Groveland Township	2,570	4,114	4,705
Hazel Park City	23,784	20,914	20,051
Highland Township	8,372	16,958	17,941
Holly Township	3,041	3,612	3,257
** Holly Village	4,355	4,874	5,595
Huntington Woods City	8,536	6,937	6,419
Independence Township	16,327	20,569	23,717
** Clarkston Village	1,034	968	1,005
Keego Harbor City	3,092	3,083	2,932
Lake Angelus City	—	—	328
Lathrup Village City	4,676	4,639	4,329
Lyon Township	4,500	7,078	9,450
Madison Heights City	38,599	35,375	32,196
Milford Township	2,557	5,146	6,610
** Milford Village	4,699	5,041	5,511
Northville City (Oakland County Portion)	2,367	2,785	3,367
Novi City	9,668	22,525	32,998
Novi Township	182	150	150
Oakland Township	4,793	7,628	8,227
Oak Park City	36,762	31,537	30,462
Orchard Lake Village City	1,487	1,798	2,286
Orion Township	14,189	19,566	21,019
Lake Orion Village	2,921	2,907	3,057
Oxford Township	5,953	7,823	9,004
** Oxford Village	2,536	2,746	2,929
Pleasant Ridge City	3,989	3,217	2,775
Pontiac City	85,279	76,715	71,166
Pontiac Township	12,646	15,388	—
Lake Angelus Village (Part also in Waterford)	573	210	—
Rochester City	7,054	7,203	7,130
Rochester Hills City	—	—	61,766
Rose Township	2,502	4,465	4,926
Royal Oak City	86,238	70,893	65,410
Royal Oak Township	6,326	5,784	5,011
Southfield City	69,285	75,607	75,728
Southfield Township	46	40	18
** Beverly Hills Village	13,598	11,598	10,610
** Bingham Farms Village	566	529	1,001
** Franklin Village	3,311	2,864	2,626
South Lyon City	2,675	5,214	5,857
Springfield Township	4,388	8,295	9,927
Sylvan Lake City	2,219	1,949	1,884
Troy City	39,419	67,102	72,884
Walled Lake City	3,759	4,748	6,278
Waterford Township	59,123	64,250	66,692
Lake Angelus Village (Part also in Pontiac Twp.)	573	187	—
West Bloomfield Township	28,563	41,962	54,516
White Lake Township	14,311	21,870	22,608
Wixom City	2,010	6,705	8,550

** Townships that have a Village within their boundaries — add both Village and Township figure together for a true township census total.

1992 EQUALIZED VALUATION OF OAKLAND COUNTY
TOWNSHIPS

Addison	\$ 119,172,550
Bloomfield	1,986,788,410
Brandon	186,511,150
Commerce	684,380,377
Groveland	99,413,940
Highland	291,069,600
Holly	117,796,900
Independence	581,461,700
Lyon	205,459,450
Milford	328,354,450
Novi	3,696,639
Oakland	287,244,800
Orion	562,935,250
Oxford	224,319,200
Rose	88,332,200
Royal Oak	48,313,700
Southfield	580,425,300
Springfield	205,126,025
Waterford	1,217,642,800
West Bloomfield	1,820,691,417
White Lake	410,582,000

TOTAL TOWNSHIPS 10,049,717,858

CITIES

Auburn Hills	445,339,460
Berkley	247,153,350
Birmingham	915,644,750
Bloomfield Hills	483,332,650
Clawson	228,640,650
Farmington	260,589,200
Farmington Hills	2,420,872,700
Ferndale	287,006,900
Hazel Park	170,283,900
Huntington Woods	150,824,000
Keego Harbor	43,826,900
Lake Angelus	27,094,280
Lathrup Village	101,276,250
Madison Heights	743,929,450
Northville	97,202,750
Novi	1,162,679,300
Oak Park	364,109,960
Orchard Lake	158,339,550
Pleasant Ridge	57,746,460
Pontiac	713,542,000
Rochester	208,185,000
Rochester Hills	1,696,869,600
Royal Oak	1,165,923,350
Southfield	2,263,186,675
South Lyon	102,131,500
Sylvan Lake	49,103,350
Troy	3,142,013,020
Walled Lake	104,703,950
Wixom	279,490,000

TOTAL CITIES 18,091,040,905

TOTAL COUNTY 28,140,758,763

OAKLAND COUNTY GOVERNMENT

In August of 1974, Oakland's citizens voted to create the first unified form of county government in the history of Michigan. Less than 60 such governments exist across the nation.

The government is headed by an elected County Executive, whose responsibilities are similar to those of a governor or the mayor of a large city. The County Executive administers the government on a day to day basis, proposes new programs and revamps existing programs. The executive represents the interests of more than 1 million residents.

Under this structure, the Board of Commissioners performs a role similar to a state legislature or city council. It acts on proposals submitted by the County Executive and makes proposals of its own. Government policy is set by the Board of Commissioners and implemented by the County Executive. The County Executive may veto acts of the Commission and the vetoes can be overridden by two-thirds vote of the Commission.

The third branch of government, the judiciary, was not changed by the executive form of government. Similarly, the five other offices headed by officials elected county-wide remain unchanged. These are the Prosecutor, the Sheriff, the Clerk-Register of Deeds, the Treasurer, and the Drain Commissioner.

SERVICE CENTER COMPLEX

Such a center has been developed in Oakland and the Court House serves as its focal point. The Service Center Complex is located on a 450-acre site and serves as the hub of county government. The County has been working towards the development of this complex by systematically constructing facilities as needed and funds permit. The complex is laid out in a spacious setting according to a master plan, thus giving direction to an ultimate development which will be functional as well as aesthetically pleasing. Most of the County's departments and institutions presently are housed here. One of the principles designed into the Service Center is the "Community" concept of campus development whereby similar or related functions are grouped together.

At the Service Center is the Law Enforcement - Jail Complex. In designing the Complex, the County has looked to the future in anticipating an expanded role for Sheriff's Department in law enforcement. Nationwide research as to how a jail and its related facilities might be designed to be functional and operationally efficient has resulted in a plan, which might serve as a model for other local agencies who deal in law enforcement. A closed circuit television system for surveillance and security, a crime laboratory to provide technical assistance on a local basis for crime solving, and a communication control center for the law enforcement for the entire county are in the building.

A second complex on the Service Center grounds, the Oakland Community Mental Health Center, is operated by the county Community Health Services Board. The Center consolidates a number of programs for citizens with developmental disabilities, and was constructed with 60% county money and 40% Federal grant funds. The Center houses a *Community Mental Health day program* for more than 130 developmentally disabled individuals; in addition, the Counseling and Evaluation Service sees about 425 persons a year. The building is unique in Michigan in having been funded well over half by county government; it also provides space for the administrative offices of Community Mental Health.

The Children's Village also is on the Service Center grounds. It provides shelter, care and treatment services for neglected and delinquent wards of the Court. Situated on fifty acres in the Service Center, it consists of small units which provide an opportunity to deal with individual problems of youth. The Village affords a home-like atmosphere to the troubled children coming to the attention of the Court. It

is a model which evokes considerable favorable reaction from visitors and judges from throughout the State and other areas of the country.

Oakland's officials are proud of the County Court House Complex and its related facilities. Visitors from other counties, states and nations have found and will continue to find themselves most welcome.

OAKLAND COUNTY COMMUNITY MENTAL HEALTH SERVICES

Some people have serious chronic psychiatric problems that can interfere with their whole life, especially jobs, school and relationships with family, friends or co-workers.

Oakland County's Community Mental Health Services, a division of county government, can help with these problems. There are five major outpatient clinics funded by Community Mental Health for adults and children with emotional troubles. The clinics are staffed with psychologists, psychiatrists and social workers who offer individual and group counseling, and there are outreach offices to make services available to all parts of Oakland County. Community Mental Health also operates case management programs for adults with chronic mental illness.

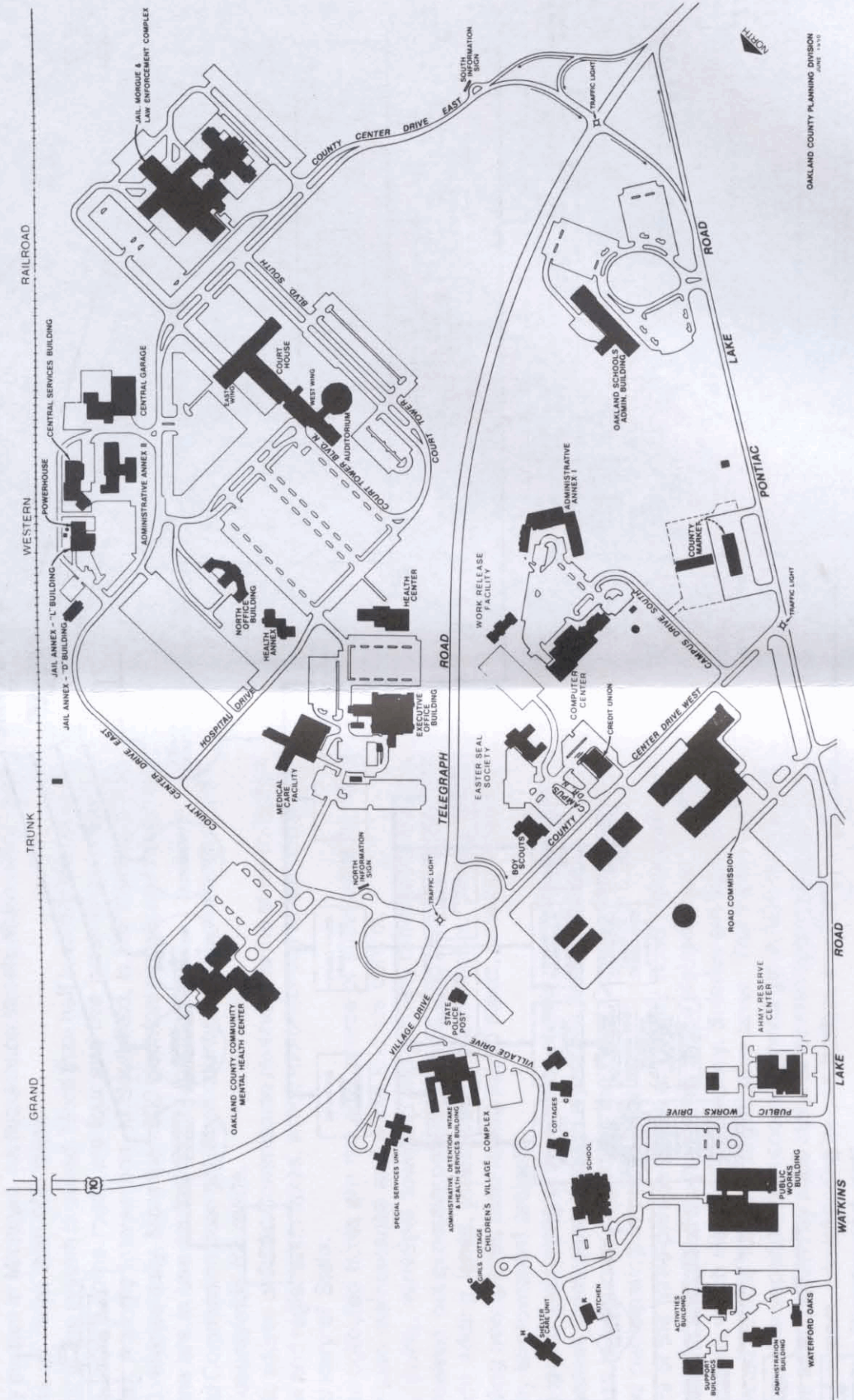
Fees are on a sliding scale, based on the client's ability to pay, and Community Mental Health clinics are approved for reimbursement by Medicaid, Medicare, and various health insurances. The clinics are part of a \$25.7 million program directed by the Oakland County Community Mental Health Services Board, whose members are appointed by the County Board of Commissioners, and funding for the program comes primarily from the County and State of Michigan. The total program also includes outpatient diagnostic and counseling services for developmentally disabled people; day programs for developmentally disabled adults, and mentally ill children and adults; various specialized residential treatment programs; respite care for families; and mental health educational services to the public.

Most Community Mental Health programs are open Monday-Friday during day and some evening hours. At night and on weekends and holidays there is an Emergency Service for all Oakland County residents at Common Ground in Royal Oak. Their help is available by phone or on a walk-in basis.

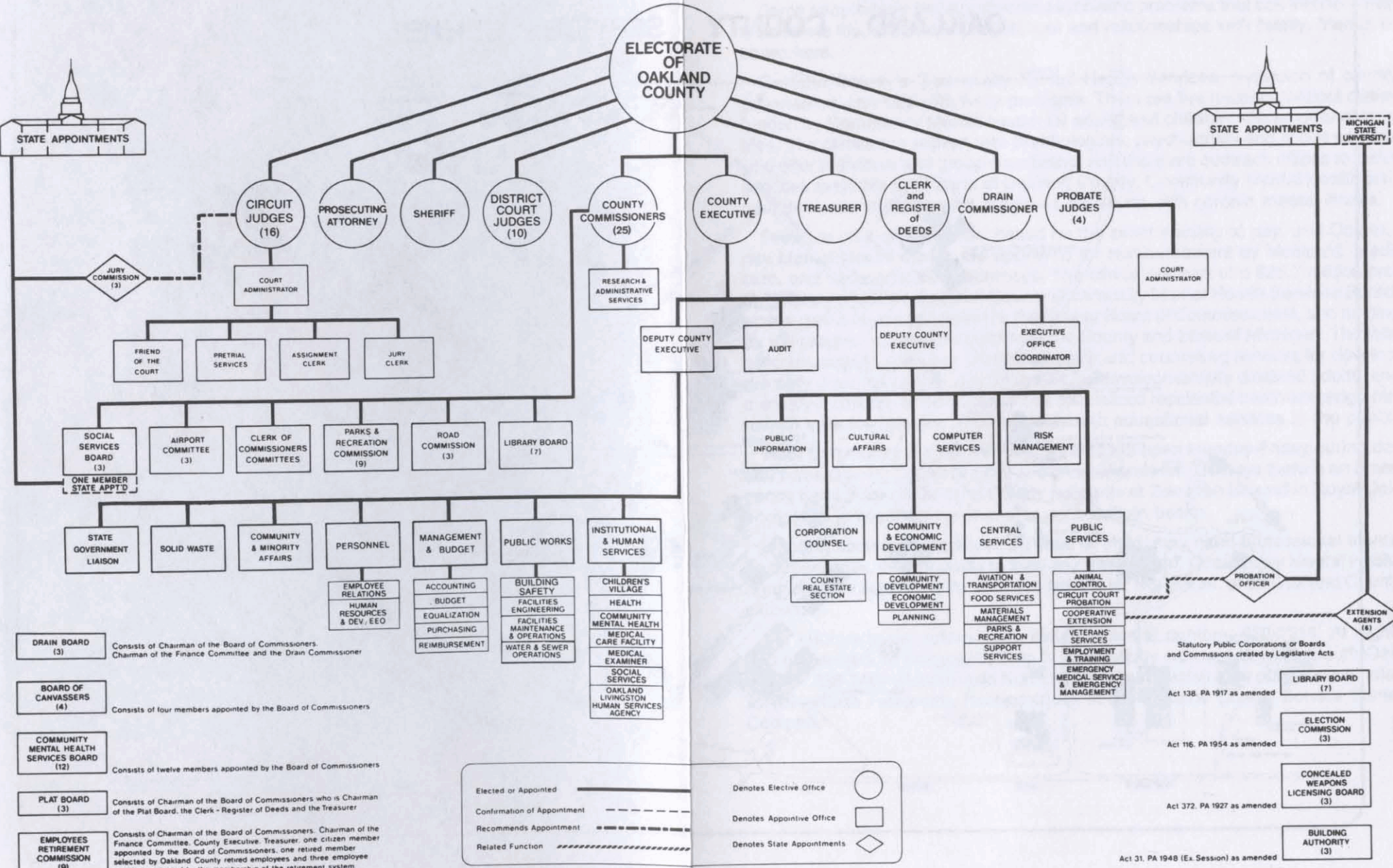
If you or someone you know, an adult or child, may need professional mental health services, we are ready to help any way we can. Community Mental Health programs are supported by your tax dollars, for the benefit of all Oakland County citizens.

For information or referral, just call this central number: 858-1210. At nights and on weekends, emergency help is available by calling 543-2900 (South Oakland) or 338-7450 (Pontiac and North Oakland). Administrative offices are located at 1200 North Telegraph, Pontiac 48341 in the Oakland County Service Center Complex.

OAKLAND COUNTY SERVICE CENTER



OAKLAND COUNTY GOVERNMENT ORGANIZATION CHART



- DRAIN BOARD (3)** Consists of Chairman of the Board of Commissioners, Chairman of the Finance Committee and the Drain Commissioner
- BOARD OF CANVASSERS (4)** Consists of four members appointed by the Board of Commissioners
- COMMUNITY MENTAL HEALTH SERVICES BOARD (12)** Consists of twelve members appointed by the Board of Commissioners
- PLAT BOARD (3)** Consists of Chairman of the Board of Commissioners who is Chairman of the Plat Board, the Clerk - Register of Deeds and the Treasurer
- EMPLOYEES RETIREMENT COMMISSION (9)** Consists of Chairman of the Board of Commissioners, Chairman of the Finance Committee, County Executive, Treasurer, one citizen member appointed by the Board of Commissioners, one retired member selected by Oakland County retired employees and three employee members selected by the membership of the retirement system

<p>Elected or Appointed —————</p> <p>Confirmation of Appointment - - - - -</p> <p>Recommends Appointment - - - - -</p> <p>Related Function //////////////</p>	<p>Denotes Elective Office ○</p> <p>Denotes Appointive Office □</p> <p>Denotes State Appointments ◇</p>
---	---

- LIBRARY BOARD (7)**
Act 138, PA 1917 as amended
- ELECTION COMMISSION (3)**
Act 116, PA 1954 as amended
- CONCEALED WEAPONS LICENSING BOARD (3)**
Act 372, PA 1927 as amended
- BUILDING AUTHORITY (3)**
Act 31, PA 1948 (Ex. Session) as amended

OAKLAND COUNTY ROADS

More than half of all highways, roads and streets in Oakland County are on the county system, which is under jurisdiction of the Board of Oakland County Road Commissioners.

The Road Commission is now in its 80th year of service to the people of Oakland County.

Totalling more than 2,400 miles, this system includes all public roads in townships and through streets in most cities and villages. It is the longest county system in Michigan. Its subdivision streets alone (all in townships) make up more than 900 miles.

About half of the system is paved. More than half is within the county's urban area, where some roads are four and five lanes wide to handle heavy traffic. A single intersection, in Southfield, is the meeting place for 100,000 vehicles daily. More than 900 electrical signals and more than 35,000 signs are in use on the county road system.

The Road Commission does not levy a countywide tax, nor does anyone levy a tax countywide for roads.

The basic source of Road Commission revenues is the state-collected vehicle fuel and registration taxes, which motorists pay at the pump and to the Secretary of State.

The state-collected taxes are the only source of substantial funding for county road maintenance and snow and ice control.

Federal, county, municipal, township and property owner contributions are also received, but generally only for specific road projects. Such projects include adding lanes, intersection improvements, paving gravel roads, adding new gravel, resurfacing paved roads, passing lanes and other safety improvement projects.

For paving and resurfacing of subdivision streets, property owners can specially assess themselves through a process prescribed by state law. The process is begun by contacting the Road Commission; then petitioning and participating in public hearings.

Members of the three-person Board of County Road Commissioners are appointed for staggered six-year terms by the elected Board of County Commissioners, which also sets their salary. Salaries are funded by the state-collected vehicle fuel and registration taxes. The Board of Road Commissioners is separate from county general government, establishing policies as authorized by state statutes for management of the countywide road system, administering its own budget, and hiring its own full-time Managing Director and staff.

Citizen complaints and requests for information are given special attention by the Road Commission's Department of Citizen Services. That office may be reached between 8 a.m. and 4:45 p.m. weekdays by dialing 858-4804.

WHERE TO GET MAPS, AERIAL PHOTOGRAPHS AND DEVELOPMENT INFORMATION

If you are looking for property line maps, aerial photography or development data, the Oakland County Planning Division has what you need.

Property line maps of every parcel in Oakland County are kept up to date each year. Aerial photography is also provided for the entire county — the most recent being 1990. The aerials can be superimposed with the current property line maps or enlarged to a scale where even telephone poles or parking lot lines are easily visible. Realtors and developers use aerials to locate available vacant land. If you ever need an aerial view of a street, home, place of business or accident site, the Planning Division can provide you with a custom aerial enlargement.

Street-Index maps printed in four quadrants (NE, NW, SE, SW) are produced which include local information and places to see. Special "theme" maps are also available which show such topics as zip codes, school districts, voting precincts, population densities, zoning and master plans, sewers, land use, and natural resources, as well as lands already zoned industrial, commercial, office or multi-family but vacant. These are just a few of the many maps available.

In addition to maps, development data and statistics are also produced. Population, housing, income, land use, zoning and environmental data is prepared and collected. Planning staff are available to explain how the land is being used, where the wetlands and sensitive ecological areas are, soil conditions, population trends, ethnic makeup, median or per capita incomes and sewer locations.

The Planning Division also assists local communities to revitalize their downtowns or plan for a park. Local officials are kept on top of the issues and actions before the Southeast Michigan Council of Governments (SEM-COG) by the Planning Division staff.

School and civic group tours of the office are conducted as requested. We are also available to make presentations on various planning topics or projects.

So . . . if you need a map, aerial or some statistics, the Planning Division is the place to contact.

Oakland County Planning Division, Executive Office Building, 1200 North Telegraph, Pontiac, MI 48341. Phone: 858-0720 or (mapping) 858-0723.

CITIES

CITY OF AUBURN HILLS 48326 1827 North Squirrel Road

Fax (313) 370-9348

COUNCIL	Robert W. Grusnick, Mayor Ronald R. Shirley Margaret A. Cooper Larry G. Douglas, Sr.	E. Dale Fisk James D. McDonald Kay L. Sendegas
Clerk	(Phone 370-9400)	Veronica C. New
Treasurer		Elaine S. Goebel
Manager		Dennis M. McGee
Attorney		William P. Hampton
Police Chief		John Dalton
Fire Chief		Mark Walterhouse
Assessor		Victor Bennett
Finance Director		Daniel Agacinski
Building Department Manager/Assistant City Manager		Glen Schoonfield
District Court Judges (52nd-3rd)	Ralph Nelson, James P. Sheehy, and Robert L. Shipper ...	Rochester Hills

CITY OF BERKLEY 48072-1690 3338 Coolidge Highway

Fax (313) 546-2428

COUNCIL	Jerald R. Durst, Mayor Ralph O. Conklin Maybelle S. Fraser Eugene B. Haire	Neil T. Jordan Angus McPherson Michael Rappaport
Clerk	(Phone 546-2420)	Leona M. Garrett
Treasurer		Leona M. Garrett
Manager		Calvin Teague
Attorney		Richard A. Neaton
Public Safety Director		William L. Rechlin
Code Enforcement Officer		Brent Gilbert
Director of Community Development		Calvin Teague
Director of Public Services		Richard Shepler
Assessor	Oakland County Equalization Dept.	
Director of Finance		Michael P. Tyler
Civil Engineer	Finkbeiner, Pettis and Strout	
District Court Judge (45A)		William R. Sauer

CITY OF BIRMINGHAM 48012 151 Martin Street, P.O. Box 3001

Fax (313) 644-5614

COMMISSIONERS	Sandra J. Defebaugh, Mayor Robert A. DeLaura Henry C. Forster A. Randolph Judd	Dante J. Lanzetta, Jr. Rex A. Martin Eleanor A. Siewert
Clerk	(Phone 644-1800)	Judith A. Benn
Treasurer		Thelma K. Shivel
Manager		Thomas M. Markus
Attorneys		Beier, Howlett, P.C.
Chief of Police		Edward Ostin
Fire Chief		Edward Weber
Assessor		Carol Hargan
Director of Finance		Sharon Ostin
City Engineer		Dennis Dembiec
Building Official		Patrick Murphy
District Court Judges (48th)	Edward Avadenka, Thomas W. Brookover and Gus Cifelli ...	Bloomfield Hills

CITY OF BLOOMFIELD HILLS 48304-2322**45 East Long Lake Road**

Fax (313) 644-4813

COMMISSIONERS	Michael T. Zambricki, Mayor	
	Nancy K. Polk	Frank Pollock
	Cameron Lombard	Marilynn Varbedian
Clerk	(Phone 644-1520)	Charles H. Harmon, Jr.
Treasurer		Joseph Secumski
Manager		Charles H. Harmon, Jr.
Attorney		William P. Hampton
Director of Public Safety		David R. Piche'
Assessor		Oakland County Equalization Dept.
Building Inspector		John Hudock
District Court Judges (48th)	Edward Avadenka, Thomas W. Brookover and	Gus Cifelli

CITY OF THE VILLAGE OF CLARKSTON 48346**375 Depot Road**

COUNCIL	Sharron Catallo, Mayor	
	James Schultz	Douglas Roeser
	Stephen Arkwright	Karen Sanderson
	William Basinger	Stephen Secatch
Clerk	(Phone 625-3770 or 625-1559)	Jeanne Selander Miller
Treasurer		Artemus M. Pappas
Manager		Artemus M. Pappas
Attorney		Thomas J. Ryan
Chief of Police		Robert DeVore
Fire Chief		Roland G. Wilson
Assessor		Oakland County Equalization Dept.
Director of Finance		Artemus M. Pappas
Building Inspector		Seymour Stone
District Court Judge (52nd-2nd)		Gerald E. McNally

CITY OF CLAWSON 48017**425 North Main Street**

COUNCIL	Mary F. Airriess, Mayor	
	Robert A. Crouner	Thomas A. Palmer
	Barbara L. Iseppi	Donald T. Waldron
Clerk	(Phone 435-4500)	Carol A. Kanirie
Treasurer		Kathryn M. Baker
Manager		D. Wayne O'Neal
Attorney		Jon H. Kingsepp
Chief of Police		Mike Walsh
Fire Chief		Kraig Bouse
Assessor		Oakland County Equalization Dept.
Director of Finance		John L. Modzinski
Building Inspector		Ronald H. Brenner
District Court Judges (52nd-4th)	William E. Bolle, Dennis C. Drury and	Michael A. Martone ... Troy

CITY OF FARMINGTON 48335**23600 Liberty Street**

Fax (313) 473-7261

COUNCIL	William S. Hartsock, Mayor	
	Arnold T. Campbell	Shirley V. Richardson
	JoAnne McShane	Richard L. Tupper
Clerk	(Phone 474-5500)	Patsy K. Cantrell
Treasurer		Patsy K. Cantrell
Manager		Frank J. Lauhoff
Attorney		John M. Donohue
Acting Director of Public Safety		Gary M. Goss
Director of Public Services		Earl R. Billing
Fire Marshal		Joseph Schornack
Assessor		John G. Sailer
Building Inspector		Earl R. Billing
District Court Judges (47th)	Frederick L. Harris and Marla E. Parker	

CITY OF FARMINGTON HILLS 48336**31555 Eleven Mile Road**

Fax (313) 474-5925

COUNCIL	Nancy Bates, Mayor	
	Lawrence A. Lichtman	Terry Sever
	Jonathan L. Grant	Joanne Smith
	Ben Marks	Aldo Vagnozzi
Clerk	(Phone 474-6115)	Kathryn A. Dornan
Director of Finance & Treasurer		Charles D. Rosch
Manager		William M. Costick
Attorneys	Kohl, Secrest, Wardle, Lynch, Clark and Hampton	
Chief of Police		William J. Dwyer
Fire Chief		Richard Marinucci
Assessor		Dean Babb
City Engineer		William Otwell
Director of Public Services		Thomas P. Biasell
Building/Community Development Director		Dale Countegan
District Court Judges (47th)	Frederick L. Harris and Marla E. Parker	... Farmington

CITY OF FERNDALE 48220-1797**300 East Nine Mile Road**

(Phone 546-2360)

COUNCIL	Robert McGee, Mayor	
	Pamela S. McCullough	Phillip L. Poole
	Charles G. Goedert	Patrick T. Sullivan
Clerk	(Phone 546-2384)	Dorothy L. Fuller
Treasurer/Assessor		Dwayne G. McLachlan
Manager		Jess R. Soltess
Attorneys	Brian M. Smith and Associates	
Chief of Police		S. Joseph Sullivan
Fire Chief		Gary Lohmeier
Constable		William S. Dahlerup
Director of Finance		Jaynmarie C. Reddie
Building Inspector		Eugene Tutag
District Court Judge (43rd)		Douglas J.M. Voss

CITY OF HAZEL PARK 48030
111 East Nine Mile Road

Fax (313) 546-4088

COUNCIL Jeffrey A. Keeton, Mayor
 Patricia L. Turner Erik Jurvis, Jr.
 David Hinz Cindy Truba-Hutchinson

Clerk (Phone 546-4064) Ruth Ann Hines
 Treasurer Irene Zagar
 Manager (Phone 546-4060) Frank Myers
 Attorney Sherman and Sherman
 Chief of Police Albert Sadow
 Fire Chief James Carene
 Assessor Oakland County Equalization Dept.
 Director of Finance Ray Lambert
 Acting Building Inspector Frank Luxon
 District Court Judge (43rd) Joseph S. Agnello

CITY OF HUNTINGTON WOODS 48070-1199
26815 Scotla Road

Fax (313) 541-3412

COMMISSIONERS Ronald F. Gillham, Mayor
 Gordon L. Hassig Gilda Z. Jacobs
 Harry Howes John M. Wierzbicki

Acting Clerk (Phone 541-4300) Janet M. Wayne
 Treasurer Lou Ann Schimansky
 Manager Alex R. Allie
 Attorneys Shifman and Carlson, P.C.
 Director of Public Safety David Danaher
 Assessor Oakland County Equalization Dept.
 Director of Finance R. Tony Lehmann
 Building Inspector Dan Murray
 District Court Judges (45B) Marvin F. Frankel and Benjamin J. Friedman
 ... Oak Park

CITY OF KEEGO HARBOR 48320
2025 Beechmont, P.O. Box 665

Fax (313) 682-1635

COUNCIL Arthur D. Nance, Mayor
 Ralph W. Behler David A. Hofmann
 George A. Douroujalian Cynthia G. Smith

Clerk (Phone 682-1930) Katy Mann
 Treasurer Katy Mann
 Manager Michael L. McReynolds
 Attorney Thomas J. Ryan
 Chief of Police William E. Holloway
 Fire Chief William Brown
 Assessor Oakland County Equalization Dept.
 Building Official Seymour D. Stone
 District Court Judges (48th) Edward Avadenka, Thomas W. Brookover and
 Gus Cifelli ... Bloomfield Hills

CITY OF LAKE ANGELUS 48326**45 Gallogly Road**

COUNCIL	Donald P. Althoff, Mayor	
	C. Dale DeLorge	George A. Drake
	William T. Collins, Jr.	Shirley Zemke
Clerk	(Phone 335-5396)	Nancy L. DeLorge
Treasurer		Nancy L. DeLorge
Attorney		James L. Howlett
Chief of Police		Michael Stephani
Assessor		Jacqueline Dauw
Building Inspector		William Dinnan, Jr.
District Court Judges (52nd-3rd)	Ralph Nelson, James P. Sheehy, and Robert L. Shipper ...	Rochester Hills

CITY OF LATHRUP VILLAGE 48076-3489**27400 Southfield Road**

Fax (313) 569-2529

COUNCIL	Marvin H. Voight, Mayor	
	Mary L. Kearney	Karen A. Peterson
	Margaret L. Dickinson	Dana L. Stetz
Clerk	(Phone 557-2600)	Vacant
Treasurer		Mark W. Pollock
Administrator		Jeffrey A. Bremer
Attorney		James H. McCrory
Chief of Police		David Ford
Assessor		Oakland County Equalization Dept.
Director of Finance		Jeffrey A. Bremer
Building Inspector		Jerald D. Stone
District Court Judges (46th)	Stephen C. Cooper, Bryan H. Levy and Susan M. Moiseev ...	Southfield

CITY OF MADISON HEIGHTS 48071**300 West Thirteen Mile Road**

Fax (313) 588-8442

COUNCIL	George W. Suarez, Mayor	
	Gary R. McGillivray	Lindell M. Ross
	Elva L. Mills	Marilyn R. Russell
	Russell C. Pearce	Mary Frances Stema
Clerk	(Phone 588-1200)	Geraldine A. Case
Treasurer		Margaret P. Birach
Manager		Jon R. Austin
Attorney		Larry Sherman
Chief of Police		Ronald Pearce
Fire Chief		William Donahue
Assessor		Terence M. Haran
Building Inspection Administrator		Rudolph Potyok
Community Development Director		Timothy Moore
District Court Judge (43rd)		Robert J. Turner

CITY OF NORTHVILLE 48167**215 West Main Street**

Fax (313) 349-9244

COUNCIL	Christopher J. Johnson, Mayor	
	Carolann Ayers	Paul F. Folino
	Mark Cryderman	Jerome J. Mittman
Clerk	(Phone 349-1300)	Delphine Dudick
Manager/Treasurer		Gary L. Word
Attorney		James R. Kohl
Chief of Police		Rodney A. Cannon
Fire Chief		James Allen
Assessor/Director of Finance		Mark Christiansen
Building Inspector		Joseph Attard
Supervisor of Public Works		Theodore Mapes
District Court Judges (35th)	James N. Garber and John E. MacDonald	... Plymouth

CITY OF NOVI 48375**45175 W. Ten Mile Road**

Fax (313) 347-0577

COUNCIL	Matthew C. Quinn, Mayor	
	Hugh D. Crawford	Tim Pope
	Nancy C. Cassis	Robert D. Schmid
	Carol A. Mason	Joseph G. Toth
Clerk	(Phone 347-0456)	Geraldine Stipp
Finance Director/Treasurer		Les Gibson
Manager		Edward F. Kriewall, Jr.
Attorney		David M. Fried
Chief of Police		Douglas F. Schaeffer
Fire Chief		Arthur R. Lenaghan
Assessor		James Klausmeyer
Building Official		Donald Saven
District Court Judges (52nd-1st)	Michael Batchik, Harold M. Bulgarelli and Brian W. MacKenzie ...	Walled Lake

CITY OF OAK PARK 48237**13600 Oak Park Boulevard**

Fax (313) 547-4888

COUNCIL	Gerald E. Naftaly, Mayor	
	Arthur Frohlich	Louis Demas
	Raymond M. Abrams	Michael M. Seligson
Clerk	(Phone 691-7400)	Sandra K. Gadd, CMC, AAE
Finance Director/Treasurer		James E. Calder
Manager		Daniel Fitzpatrick
Attorney		Burton R. Shifman
Director of Public Safety		G. Robert Seifert
Fire Chief		Randy Rance
Assessor		Ronald Sztumerski
Director of Public Works		Thomas A. Larson
Director of Community Development		Louis Szlauer
District Court Judges (45B)	Marvin F. Frankel and Benjamin J. Friedman	

CITY OF ORCHARD LAKE VILLAGE 48323-1605
3955 Orchard Lake Road

Fax (313) 682-1308

COUNCIL	Leo C. Larkin, Mayor	
	John B. Carlin, Jr.	Sarah H. McClure
	Frank Copeland	Robert P. Milia
	Gerald Kosmensky	James Talpos
Clerk	(Phone 682-2400)	Janet E. Overholt Green
Treasurer		Frank A. Copeland
Attorney		L. Nicholas Treinen
Chief of Police		David J. King
Fire Chief		William Brown
Assessor		John G. Sailer
Building Inspector/DPW Superintendent		Joe D. Casey
District Court Judges (48th)	Edward Avadenka, Thomas W. Brookover and Gus Cifelli ...	Bloomfield Hills

CITY OF PLEASANT RIDGE 48069

23925 Woodward Avenue

Fax (313) 541-2504

COMMISSIONERS	Ralph A. Castelli, Jr., Mayor	
	Cheryl A. Baker	Mark W. LaChey
	Daniel G. Costello	Vacancy
Clerk	(Phone 541-2900)	Sherry W. Ball
Treasurer		Thomas E. Dempsey
Manager		Joseph Merucci
Attorney		Donald H. Gillis
Chief of Police		Richard A. VanderEyck
Fire Chief		Gary Lohmeier
Assessor		Oakland County Equalization Dept.
Building Inspector		Daniel Murray
District Court Judges (45B)	Marvin F. Frankel and Benjamin J. Friedman	... Oak Park

CITY OF PONTIAC 48342
450 Wide Track Drive, East

Fax (313) 857-8795

COUNCIL	Wallace E. Holland, Mayor	
	Emmett Elliott, Jr., Deputy Mayor	
	John P. Bueno, President	
(Phone 857-7677)	Everett L. Seay	M. Campanella Russell
	Tracy A. Miller, Sr.	Peter V. Tenuta
	Clarence Phillips	Michael E. Willis
Clerk	(Phone 857-7619)	Mary H. Williams, CMC
Treasurer		Donald E. Brooks
Director of Finance		Wayne Belback
Acting Attorney		Tom Hunter
Chief of Police		Walter Hitchuk
Fire Chief		Robert J. Lamson
Assessor		Bruce Stewart
Building Inspector		David Zuithof
District Court Judges (50th)	Leo Bowman, Christopher C. Brown, Louis E. Fairbrother and William Waterman	

CITY OF ROCHESTER 48307
400 Sixth Street, P.O. Box 10

COUNCIL Thomas L. Werth, Mayor
 Robert A. Lytle
 David Becker
 Ann Marie Boyce
 Robert Head
 David Katulic
 Roger L. Knapp

Clerk (Phone 651-9061) Nancy D. Miller
 Treasurer Charles R. Ogier
 Manager Kenneth A. Johnson
 Attorney Arthur R. Cox
 Chief of Police Theodore Glynn
 Fire Chief William Gray
 Assessor Oakland County Equalization Dept.
 Director of Finance Charles R. Ogier
 Building Inspector Edward Alward
 District Court Judges (52nd-3rd) Ralph Nelson, James P. Sheehy and
 Robert L. Shipper ... Rochester Hills

CITY OF ROCHESTER HILLS 48309-3033
1000 Rochester Hills Drive

Fax (313) 656-4739
 Billie M. Ireland, Mayor
 (Phone 656-4664)

COUNCIL Jon Buller, President
 Scot M. Beaton
 W. Barnett Jones
 Gary Peters
 Linda Raschke
 Patricia Roberts
 Lauren Shepherd

Clerk/Finance Director/Treasurer (Phone 656-4630) Keith Sawdon
 Assessor Kurt Dawson
 Attorneys Beier, Howlett P.C.
 Building Director William Dinnan
 DPS Director Tom Dohr
 Fire Chief William Thornton
 Parks & Forestry & Facilities Director Michael A. Hartner
 Planning/Zoning Director Patricia Goodwin
 District Court Judges (52nd-3rd) Ralph Nelson, James P. Sheehy and
 Robert L. Shipper

CITY OF ROYAL OAK 48068-0064
211 Williams Street, P.O. Box 64

Fax (313) 546-1546
 (Phone 546-1000)

COMMISSIONERS Patricia Paruch, Mayor
 Nancy A. Pirslin
 Dennis G. Cowan
 James B. Ellison
 Shirley Evoe
 James C. Johnson
 Thomas E. Kuhn

Clerk (Phone 544-6650) Mary C. Haverty
 Treasurer Michael Kondek
 Manager William J. Baldrige
 Attorney Lawrence Doyle
 Director of Public Safety John Ball
 Chief of Police Richard G. Kemp
 Fire Chief William H. Crouch
 Assessor Richard Vincent
 Director of Finance John L. DaGiau
 City Engineer Richard Cole
 Building Inspector Richard Krupp
 District Court Judges (44th) Terrence H. Brennan and Daniel Sawicki

CITY OF SOUTHFIELD 48076**26000 Evergreen Road**

Fax (313) 354-5342

COUNCIL	Donald F. Fracassi, Mayor	Vicki Goldbaum
	Steve S. Hurite, President	Suzanne Goldstein
	Peter J. Cristiano	Sidney Lantz
	Myron Frasier	Eli E. Robinson
Clerk	(Phone 354-1000)	Mary A. Bonner
Treasurer		Roman J. Gronkowski
Administrator		Robert R. Block
Attorney		John E. Beras
Chief of Police		Joseph Thomas
Fire Chief		Walter Chapman
Assessor		Ernest E. Beren
Director of Finance		James Scharret
Design Engineer		Wayne Bonus
Project Engineer		Steve Vandette
Building Official		Wayne Jewel
District Court Judges (46th)	Stephen C. Cooper, Bryan H. Levy, and Susan M. Moiseev	

CITY OF SOUTH LYON 48178**214 West Lake Street**

Fax (313) 486-0049

COUNCIL	Jeffrey L. Potter, Mayor	
	Reynold Sweet	Glenn Kivell
	Kevin Gratton	Keith Wells
Clerk	(Phone 437-1735)	Julie C. Zemke
Treasurer		Gail M. Smolarz
Manager		Rodney L. Cook
Attorneys	Booth, Patterson, Lee, Need and Adkison, P.C.	
Chief of Police		Gerald L. Smith
Fire Chief		Charles Buers
Assessor		Gail M. Smolarz
Building Inspector		Joseph Veltri
District Court Judges (52nd-1st)	Michael Batchik, Harold M. Bulgarelli and Brian W. MacKenzie . . .	Walled Lake

CITY OF SYLVAN LAKE 48320**1820 Inverness**

Fax (313) 682-7721

COUNCIL	Richard B. Farms, Mayor	
	Mitchell L. Black	J. Herbert Larson
	Marie d'Argy	Walter Roesler
Clerk	(Phone 682-1440)	Dennise Clippert
Treasurer		Dennise Clippert
Manager		John Martin
Attorney		Paul Bibeau
Chief of Police		Marvin D. McTavish
Fire Chief		William Brown
Assessor	Oakland County Equalization Dept.	
Director of Finance		John Martin
Building Inspector		John Waid
District Court Judges (48th)	Edward Avadenka, Thomas W. Brookover and Gus Cifelli . . .	Bloomfield Hills

CITY OF TROY 48084-5285
500 West Big Beaver Road

COUNCIL Jeanne M. Stine, Mayor
 Randall J. Husk Anthony N. Pallota
 Henry W. Allemon Matt Pryor
 Robert M. Gosselin John R. Stevens

Clerk (Phone 524-3300) Kenneth L. Courtney
 Treasurer Nancy Aguinaga
 Manager Frank Gerstenecker
 Attorney Peter Letzmann
 Chief of Police Lawrence Carey
 Fire Chief James Halsey
 Assessor Ernest Reschke
 Director of Finance Kenneth L. Courtney
 City Engineer Neall Schroeder
 Building Inspector Gary Shripka
 District Court Judges (52nd-4th) William E. Bolle, Dennis C. Drury and
 Michael A. Martone

CITY OF WALLED LAKE 48390-3708

1499 E. West Maple
 Fax (313) 624-1616

COUNCIL William T. Roberts, Mayor
 William I. Burke James D. Clifton
 Linda S. Ackley Heather F. M. Hill
 Diane Cartter Rebecca E. Williamson

Clerk (Phone 624-4847) Maryanne Cornelius
 Treasurer Joyce M. Golden
 Manager Phillip S. Hawter
 Attorneys Kohl, Secrest, Wardle, Lynch, Clark and Hampton
 Chief of Police Kenneth Borieo
 Fire Chief Billy S. Friar
 Director of Finance Joyce M. Golden
 Assessor Oakland County Equalization Dept.
 Building Inspector Kurt Fenske
 Department of Public Works Superintendent Ralph Smith
 District Court Judges (52nd-1st) Michael Batchik, Harold M. Bulgarelli and
 Brian W. MacKenzie

CITY OF WIXOM 48393
49045 West Pontiac Trail

Fax (313) 624-0860

COUNCIL Wayne Glessner, Mayor
 Nancy Dingeldey Henry Mack
 Mark Clancey Michael McDonald
 John P. Lee John V. Momberg

Clerk (Phone 624-4557) June Buck
 Director of Finance Kevin Brady
 Manager J. Michael Dornan
 Attorney Thomas J. Connelly
 Chief of Police Lawrence H. Holland
 Fire Chief George Spencer
 Assessor John G. Sailer
 Building Inspector Sidney Woryn
 Department of Public Works William (Ben) McCusker
 Community Services Geoffrey Middleton
 District Court Judges (52nd-1st) Michael Batchik, Harold M. Bulgarelli and
 Brian W. MacKenzie ... Walled Lake

TOWNSHIPS

ADDISON - 1440 Rochester Road, Leonard 48367
Phone 628-3317 or 628-5409 FAX (313) 628-2207

Supervisor	A. Robert Koski	Leonard
Clerk	Mary Ann Thompson	Lakeville
Treasurer	Ray E. Terry	Oxford
Trustees	Joseph Beattie	Leonard
	Patricia Eisenhardt	Leonard
	John L. Leonard	Lakeville
	Sandra Rowland	Oxford
Assessor	Scott Cunningham	
Attorney	L. Nicholas Treinen	Lake Orion
Building Inspector	John Elsarelli	Leonard
Civil Engineer	JCK and Associates, Inc.	Novi
District Court Judges (52nd-3rd)	Ralph Nelson, James P. Sheehy and Robert L. Shipper	Rochester Hills

BLOOMFIELD - 4200 Telegraph Road, P.O. Box 489,
Bloomfield Hills 48303-0489 Phone 433-7702 FAX (313) 433-7714

Supervisor	Fred Korzon	Bloomfield Hills
Clerk	Wilma S. Cotton	Bloomfield Hills
Treasurer	Sam Arslanian	Bloomfield Hills
Trustees	Joseph Genovesi	Bloomfield Hills
	Robert A. Reid	Birmingham
	Jerry J. Tobias	Bloomfield Hills
	William R. Yaw, Jr.	Bloomfield Hills
	Rick Farms	
Assessor	Rick Farms	
Attorney	William P. Hampton	Farmington Hills
Building Inspector	Christopher Best	Bloomfield Hills
Civil Engineer	Wayne Domine	
District Court Judges (48th)	Edward Avadenka, Thomas W. Brookover and Gus Cifelli	Bloomfield Hills

• **BRANDON - 395 Mill Street, P.O. Box 429, Ortonville 48462**
Phone 627-4918 FAX (313) 627-3719

Supervisor	Janet L. Van Tine	Ortonville
Clerk	(Phone 627-2851) Sally Jo Swayne	Ortonville
Treasurer	Linda B. Dula	Ortonville
Trustees	Edna Burton	Ortonville
	Ronald Haase	Oxford
	Nancy Peters	Ortonville
	Sandra Willett	Ortonville
	James Graves	Ortonville
Constables	Edward LaDouceur	Ortonville
Assessor	PLT Appraisal Company	
Attorney	Richard Campbell	Clarkston
Building Inspector	Timothy Palulian	Ortonville
Civil Engineer	Hubble, Roth and Clark	
District Court Judge (52nd-2nd)	Gerald E. McNally	Clarkston

• DESIGNATES CHARTER TOWNSHIPS

*** COMMERCE - 2840 Fisher Avenue, Commerce Township 48390**
Phone 624-0110 or 360-1050 FAX (313) 624-5384

Supervisor	Robert H. Long	Commerce Township
Clerk	Thomas K. Zoner	Commerce Township
Treasurer	Susan L. Gross	Commerce Township
Trustees	Richard L. Higginbotham	Commerce Township
	Robert D. McGee	Commerce Township
	Daniel P. Munro	Commerce Township
	Richard Sovel	Commerce Township
Assessor	Wynn Berry	
Attorney	Phillip Adkison	Waterford
Building Inspector	William D. Mitchell	Waterford
Civil Engineer	Giffels and Webster Engineers, Inc.	Rochester Hills
District Court Judges (52nd-1st)	Michael Batchik, Harold M. Bulgarelli and Brian W. MacKenzie	Walled Lake

GROVELAND - 4695 Grange Hall Road, Holly 48442
Phone 634-4152 or 627-3585

Supervisor	Donald L. Titsworth	Ortonville
Clerk	Beth J. Steele	Holly
Treasurer	Shirley A. Scramlin	Holly
Trustees	David C. Ax	Holly
	Clark J. Morgan, Jr.	Holly
Assessor	Oakland County Equalization Dept.	Pontiac
Attorney	Thomas G. Plunkett	Birmingham
Building Inspector	Steven McGee	Ortonville
Civil Engineer	Kenneth H. Wehner	
District Court Judge (52nd-2nd)	Gerald E. McNally	Clarkston

• HIGHLAND - 205 North John Street, P.O. Box 249, Highland 48357-0249
Phone 887-3791 FAX (313) 887-1937

Supervisor	Thomas P. Dunleavy	Highland
Clerk	William E. Brian	Highland
Treasurer	Patricia L. Woods	Highland
Trustees	Charles L. Cooper	Highland
	Kenneth G. Hurst	Highland
	Nancy E. Sharp	Highland
	Patrick Skarnulis	Highland
Assessor	Nancy Jones	
Attorneys	Dickinson, Wright, Moon, VanDusen and Freeman	Bloomfield Hills
Building Inspector	Joseph F. Weinburger	
Civil Engineer	Powell and Associates	
District Court Judges (52nd-1st)	Michael Batchik, Harold M. Bulgarelli and Brian W. MacKenzie	Walled Lake

HOLLY - 102 Civic Drive, Holly 48442
Phone 634-9331

Supervisor	Dale M. Smith	Holly
Clerk	Cindy M. Smith	Holly
Treasurer	Bernice M. Alexander	Holly
Trustees	Susan Stenson	Holly
	Jack Sutliff	Holly
Assessors	Pat and Gregg MacAlpine	Holly
Attorneys	Booth, Patterson, Lee, Need and Adkison, P.C.	Waterford
Building Inspector	Christopher Davis	
Civil Engineer	Hubbell, Roth and Clark	Bloomfield Hills
District Court Judge (52nd-2nd)	Gerald E. McNally	Clarkston

• DESIGNATES CHARTER TOWNSHIPS

*** INDEPENDENCE - 90 North Main Street, P.O. Box 69, Clarkston 48347 . . .**
Phone 625-5111 FAX (313) 625-2587

Supervisor	Dale A. Stuart	Clarkston
Clerk	Joan E. McCrary	Clarkston
Treasurer	John Lutz	Clarkston
Trustees	Jeffrey McGee	Clarkston
	Bruce Mercado	Clarkston
	Daniel F. Travis	Clarkston
	Mel Leroy Vaara	Clarkston
Assessor	David Kramer	
Attorneys	Kohl, Secrest, Wardle, Lynch, Clark and Hampton	Farmington Hills
Building Director	Beverly McElmeel	Clarkston
Civil Engineer	Hubbell, Roth and Clark	Bloomfield Hills
District Court Judge (52nd-2nd)	Gerald E. McNally	Clarkston

*** LYON - 57100 Pontiac Trail, P.O. Box 801, New Hudson 48165**
Phone 437-2240 FAX (313) 437-2336

Supervisor	James F. Atchison	South Lyon
Clerk	Louella M. Powell	New Hudson
Treasurer	Patricia D. Carcone	South Lyon
Trustees	Fred H. Atchison	South Lyon
	Boyd Baker	South Lyon
	Robert J. Seccombe	South Lyon
	Joseph E. Shigley, Jr.	New Hudson
Assessor	Oakland County Equalization Dept.	Pontiac
Attorney	Terrance E. Klump	South Lyon
Building Inspector	Edwin J. Chapman	New Hudson
Civil Engineer	Orchard, Hiltz and McCliment, Inc.	Livonia
District Court Judges (52nd-1st)	Michael Batchik, Harold M. Bulgarelli and Brian W. MacKenzie	Walled Lake

• MILFORD - 1100 Atlantic, Milford 48381
Phone 685-8731 FAX (313) 685-9236

Supervisor	James F. Caswell	Milford
Clerk	C. Elaine Skarritt	Milford
Treasurer	Mary Jane Cagney	Milford
Trustees	Norman D. Bourns	Milford
	Randal K. Busick	Milford
	Richard J. Chowaniec	Milford
	Brien Worrell	Milford
Assessor	Oakland County Equalization Dept.	Pontiac
Attorney	Thomas J. Connelly	Walled Lake
Building Inspector	James H. Morse	Milford
Civil Engineer	Hubbell, Roth and Clark	
District Court Judges (52nd-1st)	Michael Batchik, Harold M. Bulgarelli and Brian W. MacKenzie	Walled Lake

NOVI - P.O. Box 924, Northville 48167
Phone 349-9247 or 348-0365

Supervisor	Raymond Schovers	Northville
Clerk	Mark Zabicki	Northville
Treasurer	Pat McGuire	Northville
Trustees	Ernest Bacsanyi	Northville
	Jerry R. Prichard	Northville
Assessor	Oakland County Equalization Dept.	Pontiac
Attorney	Vacancy	
Building Inspector	Raymond Schovers	Northville
District Court Judges (52nd-1st)	Michael Batchik, Harold M. Bulgarelli and Brian W. MacKenzie	Walled Lake

• DESIGNATES CHARTER TOWNSHIPS

*** OAKLAND - 4393 Collins Road, Rochester 48306**

Phone 651-4440

Supervisor	Joan M. Buser	Rochester
Clerk	Carolyn L. Phelps	Oakland
Treasurer	Sharon Creps	Rochester
Trustees	Dominic Abbate	Rochester
	Marc H. Edwards	Rochester
	Susan L. Hoffman	Oakland
	Richard C. Krupp	Rochester
Assessor	Oakland County Equalization Dept.	Pontiac
Attorneys	Kohl, Secrest, Wardle, Lynch, Clark and Hampton	Farmington Hills
Building Inspector	James Paschal	Rochester
Civil Engineer	Professional Engineering Associates, Inc.	Troy
District Court Judges (52nd-3rd)	Ralph Nelson, James P. Sheehy and Robert L. Shipper	Rochester Hills

*** ORION - 2525 Joslyn Road, P.O. Box 199, Lake Orion 48361**

Phone 391-0304

Supervisor	Doug Brown	Lake Orion
Clerk	Marie E. English	Orion
Treasurer	Suzanne Hall	Lake Orion
Trustees	Allen C. Barnes	Lake Orion
	Burke Cueny	Lake Orion
	Peter Kemp	Lake Orion
	James E. Skylis	Lake Orion
Assessor	Kim D. Vincent	
Attorneys	Booth, Patterson, Lee, Need and Adkison, P.C.	Waterford
Building Official	Thomas H. Berger	Lake Orion
Civil Engineer	Orchard, Hiltz and McCliment, Inc.	Livonia
District Court Judges (52nd-3rd)	Ralph Nelson, James P. Sheehy and Robert L. Shipper	Rochester Hills

*** OXFORD - 18 West Burdick Street, P.O. Box 3, Oxford 48371-0003**

Phone 628-9787 FAX (313) 628-8139

Supervisor	Clifford R. Popkey	Oxford
Clerk	Clara J. Sanderson, CMC	Oxford
Treasurer	Joseph G. Ferrari	Oxford
Trustees	Shirley Clancy	Oxford
	Patricia Fitchena	Oxford
	Bradford C. Jacobsen	Oxford
	Virginia Piluras	Oxford
Assessor	D. Glenn Lemmon	
Attorney	Gary R. Rentrop	Bloomfield Hills
Building Inspector	Michael C. Darling	Oxford
Civil Engineer	Orchard, Hiltz and McCliment, Inc.	Livonia
District Court Judges (52nd-3rd)	Ralph Nelson, James P. Sheehy and Robert L. Shipper	Rochester Hills

* DESIGNATES CHARTER TOWNSHIPS

ROSE - 204 Franklin Street, Holly 48442**Phone 634-7551 or 634-8701**

Supervisor	Michael A. Izzo	Holly
Clerk	Dorothy E. Gibbard	Holly
Treasurer	Joyce V. Slaughter	Holly
Trustees	Clarence O. Gordon	Holly
	Omer J. Welty	Fenton
Constable	Emile Bair	Holly
Assessor	Edward Janicki	
Attorneys	Booth, Patterson, Lee, Need and Adkison, P.C.	Waterford
Building Inspector	David Schang	Holly
Civil Engineer	Joseph Wizynajtys	Fenton
District Court Judges (52nd-1st)	Michael Batchik, Harold M. Bulgarelli and Brian W. MacKenzie	Walled Lake

*** ROYAL OAK - 21075 Wyoming, Ferndale 48220****Phone 547-9800**

Supervisor	Jerry Saddler	Ferndale
Clerk	Carlene A. Allen	Ferndale
Treasurer	Aubrey Dunn	Ferndale
Trustees	Deano Felix	Ferndale
	David Ford	Ferndale
	Elizabeth McCloud	Ferndale
	William Morgan	Ferndale
Assessor	Oakland County Equalization Dept.	Pontiac
Attorney	H. Wallace Parker	Bloomfield Hills
Building Inspector	Frank Luxon	Ferndale
District Court Judges (45B)	Marvin F. Frankel and Benjamin J. Friedman	Oak Park

SOUTHFIELD - 18550 W. 13 Mile Road, Birmingham 48025**Phone 540-3420 FAX (313) 540-3427**

Supervisor	William A. Hassberger	Beverly Hills
Clerk	Sharon Tischler	Beverly Hills
Treasurer	Ellen M. Reed	Beverly Hills
Trustees	I. Jack Fahlen	Beverly Hills
	Karen Katz	Franklin
	Del Loeffler	Bingham Farms
	Raymond Mills	Beverly Hills
Assessor	Kenneth Cheyne	Beverly Hills
Attorney	Gerald Fisher	Farmington Hills
District Court Judges (46th)	Stephen C. Cooper, Bryan H. Levy and Susan M. Moiseev	Southfield

*** SPRINGFIELD - 650 Broadway, P.O. Box 38, Davisburg 48350-0038****Phone 634-3111 or 625-4802**

Supervisor	Collin W. Walls	Davisburg
Clerk	Nancy Strole	Davisburg
Treasurer	Lois J. Stiles	Davisburg
Trustees	Margaret A. Bloom	Clarkston
	Elaine Field-Smith	Davisburg
	Charles M. Oaks	Davisburg
	Dennis J. Vallad	Clarkston
Assessor	Judy Shirk	
Attorneys	Booth, Patterson, Lee, Need and Adkison, P.C.	Waterford
Building Inspector	Lewis C. Benfield	Davisburg
Civil Engineer	Orchard, Hiltz and McCliment, Inc.	Livonia
District Court Judge (52nd-2nd)	Gerald E. McNally	Clarkston

* DESIGNATES CHARTER TOWNSHIPS

*** WATERFORD - 5200 Civic Center Drive, Waterford 48329**

Phone 674-3111 FAX (313) 674-2888

Supervisor	Dennis M. Ritter	Waterford
Clerk	Betty Fortino	Waterford
Treasurer	Paul E. Deni	Waterford
Trustees	Gwenda J. Dempsey	Waterford
	Katherine G. Innes	Waterford
	Jean A. Scott	Waterford
	Claude A. Trim	Waterford
	Donald Wood	
Assessor	Donald Wood	
Attorney	Peter Donlin	Waterford
Building Inspector	Kenneth Delbridge	
District Court Judges (51st)	Robert W. Carr and Kenneth H. Hempstead	Waterford

• WEST BLOOMFIELD • 4550 Walnut Lake Road, P.O. Box 250130,

West Bloomfield 48325-0130 Phone 682-1200 FAX (313) 682-3788

Supervisor	Jeddy Hood	West Bloomfield
Clerk	Sharon A. Law	West Bloomfield
Treasurer	Denise D. Hammond	West Bloomfield
Trustees	Raymond R. Holland	West Bloomfield
	Michael Schwartz	West Bloomfield
	Marc Shulman	West Bloomfield
	Dennis G. Vatsis	West Bloomfield
	Cynthia Wiechert	
Acting Assessor	Cynthia Wiechert	
Attorneys	Kohl, Secrest, Wardle, Lynch, Clark and Hampton	Farmington Hills
	Sills, Hemming, Law, Essad, Polaczyh and Gillary, PC.	
	Phil Gentile	Pontiac
	David J. Henri	
Building Director	Phil Gentile	Pontiac
Township Engineer	David J. Henri	
District Court Judges (48th)	Edward Avadenka, Thomas W. Brookover and Gus Cifelli	Bloomfield Hills

*** WHITE LAKE - 7525 Highland Road, White Lake 48383**

Phone 698-3300 FAX (313) 698-3351

Supervisor	Terry Lilley	White Lake
Clerk	Bonnie L. Elliott	White Lake
Treasurer	Beverly J. Spoor	White Lake
Trustees	Thomas E. Buechel	White Lake
	Raymond G. Konkle	White Lake
	Robert E. Kostin	White Lake
	Ronald C. Voorheis	White Lake
	Kathy M. Boyea	
Assessor	Kathy M. Boyea	
Attorneys	Booth, Patterson, Lee, Need and Adkison, P.C.	Waterford
	Darlene R. Waldrop	
Building Inspector	Darlene R. Waldrop	
Civil Engineer	Johnson and Anderson, Inc.	
District Court Judges (52nd-1st)	Michael Batchik, Harold M. Bulgarelli and Brian W. MacKenzie	Walled Lake

* DESIGNATES CHARTER TOWNSHIPS

VILLAGES

BEVERLY HILLS - 18500 W. Thirteen Mile Road, Beverly Hills 48025
Phone 646-6404 FAX (313) 646-3703

President	Andrew Wong	Beverly Hills
Clerk	Patrick Sullivan	West Bloomfield
Treasurer	Betty Jones	Livonia
Assessor	Charles Hooper	Southfield
Attorney	Thomas J. Ryan, P.C.	Sylvan Lake
Manager	George L. Majoros	Birmingham

BINGHAM FARMS - 30400 Telegraph Road, Suite 328, Bingham Farms 48025
Phone 644-0044 (9:00 a.m.-1:00 p.m.)

President	Robert R. Mandy	Bingham Farms
Clerk	Kathryn P. Hagaman	Bingham Farms
Treasurer	Patricia Beach	Bingham Farms
Assessor	Ken Cheyne	Beverly Hills
Attorneys	Kohl, Secrest, Wardle, Lynch, Clark and Hampton	Farmington Hills

FRANKLIN - 32325 Franklin Road, Franklin 48025
Phone 626-9666 FAX (313) 626-0538

President	Whit Jones	Franklin
Clerk	Kathy Marotta	Franklin
Treasurer	Joseph C. Brozic	Franklin
Assessor	Janice L. Bloom	Franklin
Attorney	Michael H. Feiler, P.C.	Farmington Hills

HOLLY - 202 South Saginaw, Holly 48442
Phone 634-9571 FAX (313) 634-4211

President	Ardath Regan	Holly
Clerk	Alison K. Kalcec	Holly
Treasurer	Alison K. Kalcec	Holly
Assessors	Pat and Gregg MacAlpine	Holly
Attorneys	Gault, Davison, Bowers, Hills, Parker and McAra	Flint
Manager	James P. Murphy	Holly

LAKE ORION - 37 E. Flint Street, Lake Orion 48362
Phone 693-8391 FAX (313) 693-5874

President	William L. Grube	Lake Orion
Clerk	Mary H. Simmons	Waterford
Treasurer	Kelly R. Carter	Oxford
Assessor	Kim Vincent	
Attorney	Thomas P. McKenney	Farmington Hills
Manager	John D. Berchtold	Lake Orion

LEONARD - P.O. Box 789, Leonard 48367-0789
Phone 628-7380

President	John Verse	Leonard
Clerk	Cindy Ashley	Leonard
Treasurer	Eleanor M. Hamilton	Leonard
Assessor	Janice Ferguson	Leonard
Attorney	Phillip Adkison	Waterford

MILFORD - 1100 Atlantic, Milford 48381
Phone 684-1515 FAX (313) 684-5502

President	R. Roy Danley	Milford
Clerk	Deborah S. Bridgers	Milford
Treasurer	Becky J. Weaver	Milford
Assessor	Oakland County Equalization Dept.	Pontiac
Attorney	Thomas J. Connelly	Walled Lake
Manager	Arthur Shuffelbarger	Milford

ORTONVILLE - 395 Mill Street, P.O. Box 428, Ortonville 48462
Phone 627-4976

President	Susan K. Bess	Ortonville
Clerk	Cynthia Van Megroet	Ortonville
Treasurer	Cynthia Van Megroet	Ortonville
Assessor	Cynthia Van Megroet	Ortonville
Attorney	Gerald A. Fisher	Farmington Hills
Manager	Harvey B. Fletcher	Ortonville

OXFORD - 22 West Burdick, P.O. Box 94, Oxford 48371
Phone 628-2543 FAX (313) 628-7030

President	Peter C. Burke, Jr.	Oxford
Clerk	Kevin J. Rulkowski	Oxford
Treasurer	Linda Smith	Oxford
Assessor	Glenn Lemon	Oxford
Attorney	Robert Bunting	Oxford
Manager	Vacant	

WOLVERINE LAKE - 425 Glengary Road, Wolverine Lake 48390-1404
Phone 624-1710 FAX (313) 624-3536

President	Jim Allen	Wolverine Lake
Clerk	Sharon Miller	Ortonville
Treasurer	Frances A. Barber	South Lyon
Assessor	Wynn Berry	Commerce Township
Attorney	Thomas J. Connelly	Walled Lake
Administrator	Michael Cain	Walled Lake