



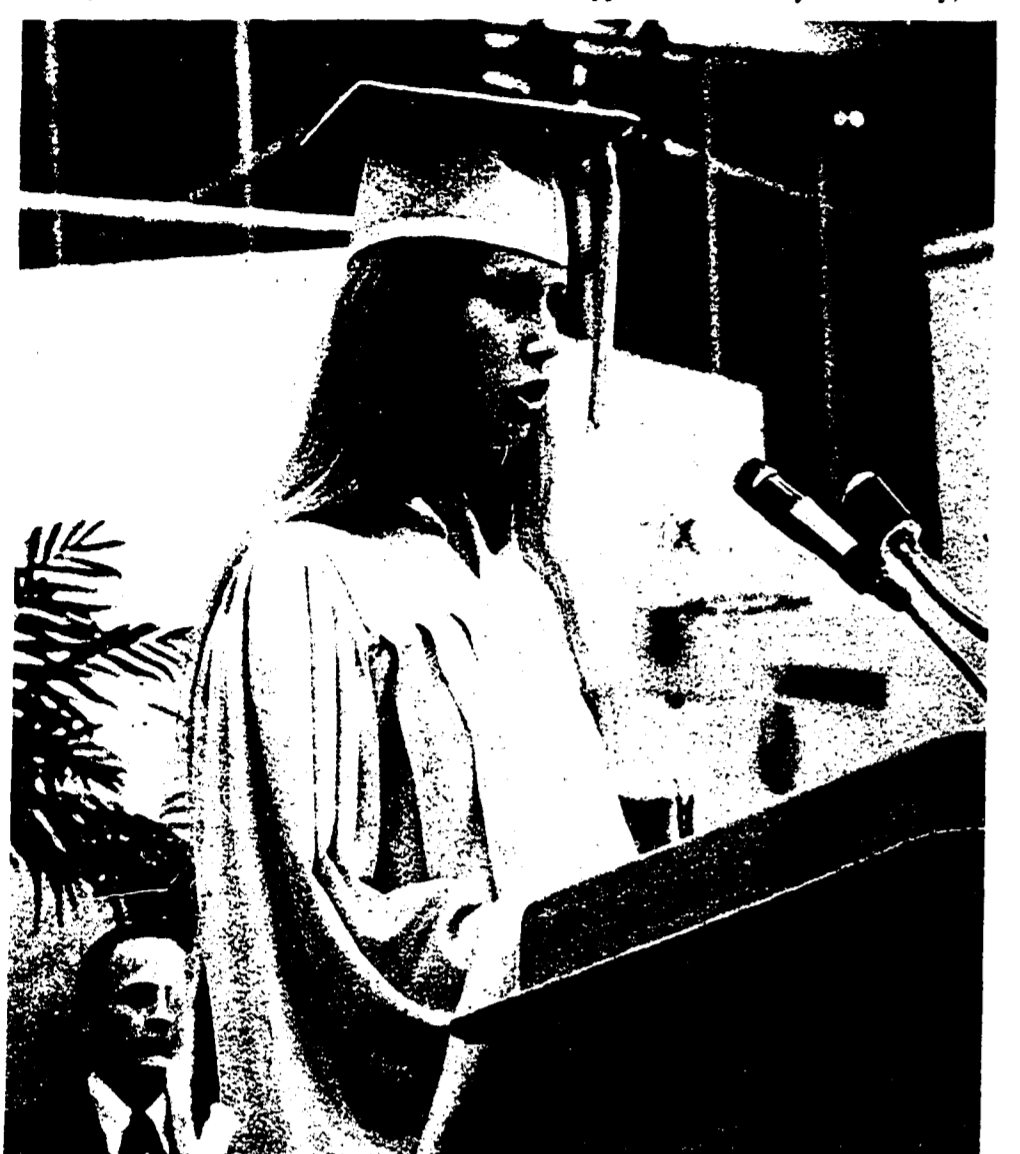




On Summer Taxes

Board Delays Action

The Northville township board of trustees decided last week that it will wait for more public reaction before it approves a Northville board of education request for summer collection of school taxes.



FAREWELL—Hendrica Sagius, exchange student from the Netherlands, gives her farewell address before a capacity crowd which watched 218 students receive diplomas last Tuesday. It was Northville High's 103rd graduating class.

Seven Mile Road Light Tied to Train Crossing

With the completion of street widening at Seven Mile and Northville roads this week or next, a highly complex traffic signal will be put into operation. The Wayne County Road Department has disclosed.

County Bar Taps Schnelz For President

Gene Schnelz of Walled Lake, city attorney for Wixom, has been elected president of the Oakland County Bar Association for the 1972-73 year.



GENE SCHNELZ

Confer Rite

On Famuliner

Herbert Jonathan Famuliner of 9684 Six Mile Road has been awarded the designation of Knight of the Order of the Holy Cross of Honour.

Honor Balko

Gregg B. Balko, son of Mr. and Mrs. Elmer Balko of 744 Horton, has been inducted into Omicron Delta Kappa, a national men's honor society.

board of education borrows against anticipated tax collections to operate during the first half of the year and then repays the loan after collections are made.

Trustee Charles Schaeffer pointed out that the school board has said that it costs the district some \$40,000 in interest to borrow operating money. He noted that if collections could be made in June, the district would not only save the interest, but could earn interest.

Klein objected to the early payment the first year, which would amount to paying two years' taxes in 1 1/2 years. "The school district can borrow money for 3 1/2 per cent. It costs the taxpayer eight per cent," he concluded.

The township attorney took notice of the challenges being made in court of the stadium authority in Detroit, which is the same act under which the township proposes to construct and pay for its building.

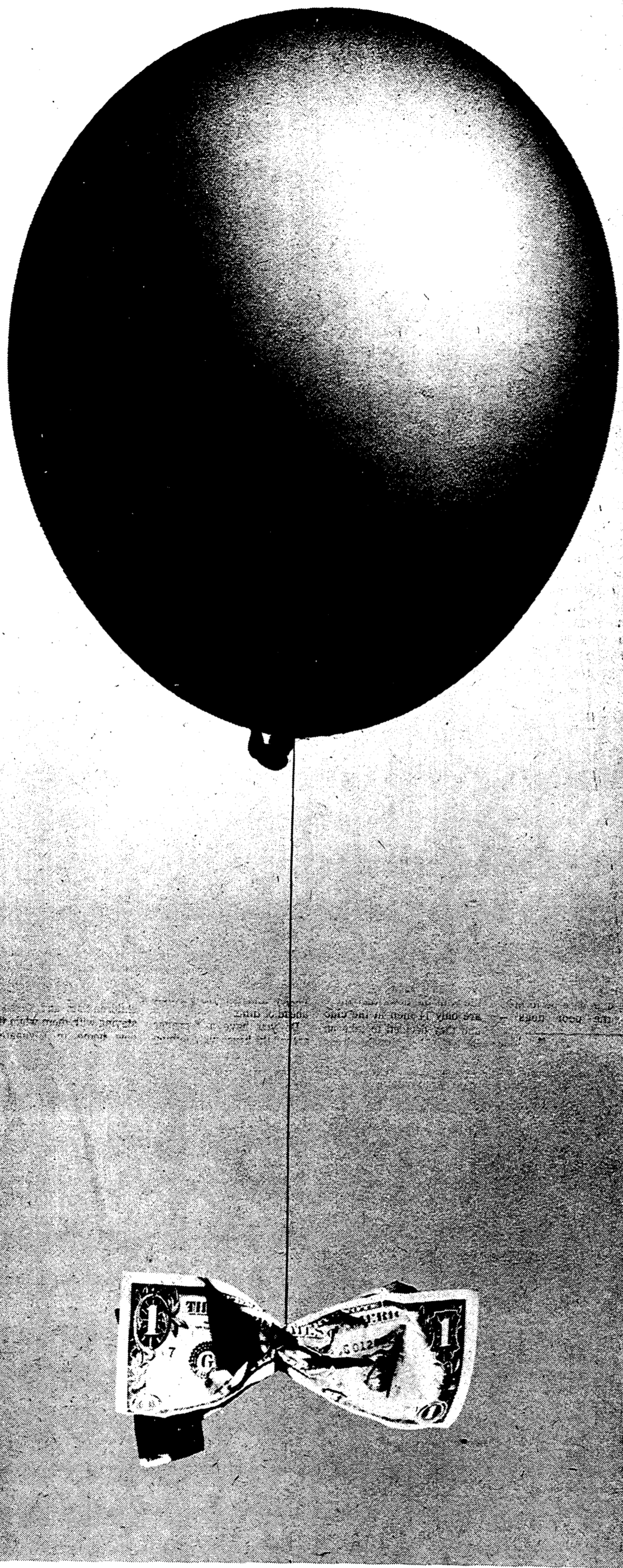
Trustee Richard Mitchell pointed out that if township citizens moved into a city-located facility they couldn't participate in township government. He suggested a separate facility for the township. He pointed out that there would be space on nine acres owned by the township on Six Mile road, which would be located near a proposed shopping center.

When a train approaches the intersection signal will become a red flashing light for stop and go traffic north and south on Northville Road. When the train has passed this signal will revert to the standard greenamber-red lights.

The present railroad crossing flashers will remain. Other than when trains are approaching or crossing, the Seven Mile Road signal will be green-amber-red lights, changing a second or two from red to flashing light.

Mayor Names Three To Board in Wixom

Mayor Gilbert Willis announced appointments to three Wixom boards last week. The appointments were all approved by the city council.

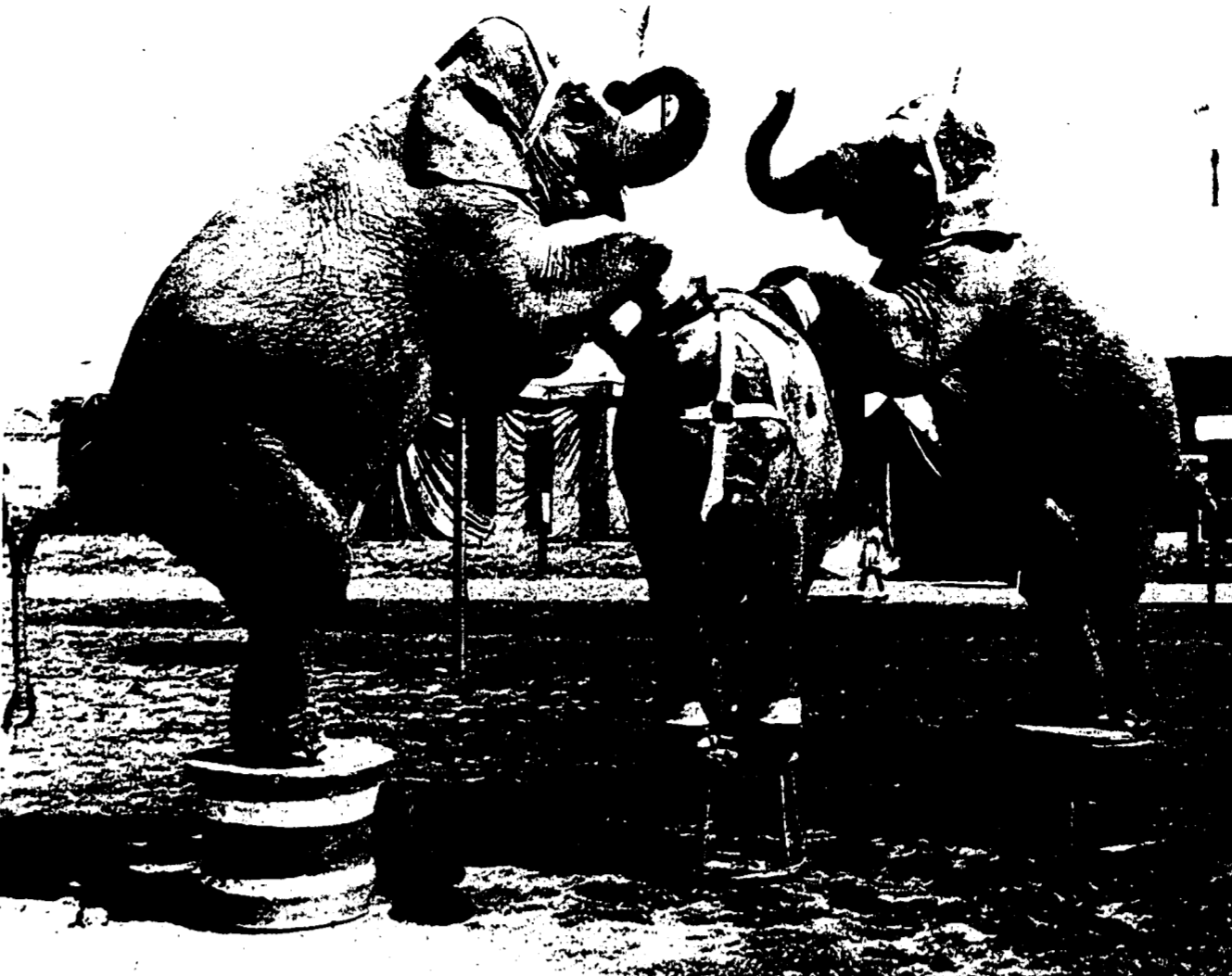


don't let it get away! insulate!

Don't let those precious dollars escape. Insulate your home and reduce your heating and cooling costs. Insulation acts as a barrier to the flow of heat.

Another advantage, which cannot be measured in monetary value, is the added comfort insulation provides. You'll enjoy a quieter home...

Stop the needless loss of money... call a qualified insulation dealer, now. Enjoy a cooler summer and be ready for added savings and comfort next winter.



PONDEROUS PERFORMING ELEPHANTS—For a free treat, watch the unloading of the animals and the raising of the tent by the elephants Saturday 7-7:30 a.m. when the circus arrives.

Wixom June 24 is sponsored by the Walled Lake Kiwanis (with proceeds going to the Wixom Youth Program), assisted by the Walled Lake J.C.'s, South Lyon Kiwanis, and Novi Little League.

Wixom Newsbeat

Thoughts About 'Big Top'

By NANCY DINGLEDY An air of excitement is building in Wixom in anticipation of the circus this Saturday. Personally, I'm a nut about circuses and I've learned in the past couple of weeks that I'm not alone.

Can you imagine all the little kids in town after seeing the performances? I can see mine right now stringing ropes between trees and playing high wire performer.

Jack Pike, the secretary-treasurer of the Walled Lake-Wixom Kiwanis Club, started me with the news that there are only 14 men in the club and they decided to take on the task of bringing the circus to town.

There are always a lot of little details that suddenly arise but these men always seem to come through. Take for example the "small" job of cutting a good portion of 40 acres of grass before the arrival of the circus.

And even though it's an early rising time, I hope to see you down at the circus location on Saturday morning. I think even if it was pouring down rain I'd still be there just to see that tent go up.

Big circuses outside are pretty scarce to find, especially in this area and

especially for my kids at least, watching all the activity in putting up the tent and the performance itself will remain a fond memory.

Accounting time for the Kiwanians will be at 10 a.m. with the circus manager. Tickets bought prior to that time will be at the reduced advance price.

Do you have a teenager around the house with nothing to do this summer? Lori Armstrong found a way to spend several days a week.

She has volunteered to be a "steady" stripper and will be working in an inoculation and dental clinic in Pontiac. Later on in the summer she and her parents, Ralph and Barb Armstrong are planning a sailing cruise to Mackinac Island on their boat.

There are always a lot of little details that suddenly arise but these men always seem to come through. Take for example the "small" job of cutting a good portion of 40 acres of grass before the arrival of the circus.

And even though it's an early rising time, I hope to see you down at the circus location on Saturday morning. I think even if it was pouring down rain I'd still be there just to see that tent go up.

Two Shows

Wixom Awaits Circus Scheduled Saturday

The circus - alive with action, color, people and animals. "The daring young man on flying trapeze," clowns, jugglers, horses, lions and elephants all waiting to perform for the delight of young and old. All this and much more is promised at the Kiwanis sponsored circus coming to Wixom this Saturday, June 24.

Performances will be at 2:30 and 8:00 p.m. The circus area is located on West Maple Road west of Wixom Road. Adequate parking will be available.

Recycling Center Opens in Pontiac

Oakland County's first recycling center opened June 17 in Pontiac, and will accept glass, paper, and aluminum Saturdays from 9 a.m. to 4 p.m.

Located at 550 S. Telegraph, the Oakland County Recycling Center is a joint project of Oakland County and local ecology groups.

Chairman of the center is Mrs. Carolyn Place of Clarkston (phone 625-2390). Glass to be accepted must be clear, green or brown, must be rinsed and have all metal (including rings) removed and is to be sorted by color.

Advances tickets are on sale through the Wixom Co-op, the Walled Lake Kiwanians, the Novi Little League and the South Lyon Kiwanis Club. The cost is considerably lower if purchased before show time.

The gaily decorated trucks bringing the circus to town are expected to arrive between 7 a.m. and 7:30 Saturday morning. Watching the 200 by 150 foot Big Top pulled into position by elephant power will be a special treat for the early morning risers.



Nelson Schrader HOME DECOR

When you are choosing colors for walls, ceilings, and floors, remember that colors appear much lighter and much less intense than they may appear on your walls. A sample is often quite deceptive unless you have an opportunity to hold the actual sample of wallpaper or paint against the wall it is to cover.

The experienced personnel at SCHRADER'S HOME FURNISHINGS, INC., 111 Center, Northville, 348-1838 or 825 Penniman, Plymouth, 453-8226 will help you avoid mistakes by assisting you with your color schemes. Come in and browse—see our room groupings. Decorating services are available and we have convenient credit terms or charge with Master Charge. Hours: 9 a.m.-6 p.m. Mon. thru Thurs., 9 a.m.-9 p.m. Fri. and Sat.

HELPFUL HINT: Too many colors in a room disturb the eye.

BRAND NEW '72 CHEVROLET IMPALA SPORT COUPE \$2789.00. INCLUDES POWER STEERING and POWER BRAKES... Stock No. 353. Lou LaRiche Chevrolet. 40875 PLYMOUTH RD. (ACROSS FROM BURROUGHS) PHONE 453-4600

Advertisement for Timberlane Lumber featuring various trees and products. CRIMSON KING MAPLES 8' TO 10' Reg. \$23.85 OUR PRICE \$17.89. SAVE SYCAMORE TREES 8' to 10' Reg. \$15.95 OUR PRICE \$11.96. GROUND COVER BALTIC IVY Per Flat Reg. \$16.50 OUR PRICE \$12.39. EUONYMUS SAVE Per Flat Reg. \$16.50 OUR PRICE \$12.39. DWARF SPREADING YEWS 24" to 30" Reg. \$12.45 OUR PRICE \$9.34. PYRAMIDAL YEWS 24" to 30" Reg. \$12.45 OUR PRICE \$9.34. PATIO BLOCKS STEEL REINFORCED 16 x 16 99c EACH 22 1/2 x 22 1/2 \$1.99. SUNSHINE DECOR BARK SAVE \$3.29 BAG CANADIAN PEAT MOSS 4 CU. FT. BAG \$4.49 ORTHO LAWN FOOD 6,000 Sq. Ft. \$3.95 SAVE 12,000 Sq. Ft. \$6.95. TIMBERLANE LUMBER 42780 W. 10 MILE ROAD - NOVI, MICHIGAN HOURS: 8 a.m. to 6 p.m. Mon.-Thurs. 8 a.m. to 9 p.m. Friday 8 a.m. to 4:30 p.m. Saturday 10 a.m. to 2:30 p.m. Sunday PHONE 349-2300

KODAK XL-55 Super 8 Movie Camera. REVOLUTIONARY DEVELOPMENT... take indoor movies without a movie light. Camera uses the new fast Ektachrome 150 film and ultra fast 1/1.2 Ektar lens. The XL-55 has zoom lens, range finder, and sports view finder. Great outdoors, too! SALE PRICED \$159.95. FOX PHOTO 882 W. ANN ARBOR TRAIL DOWNTOWN PLYMOUTH PHONE 453-5410

Westinghouse Room Air Conditioners. You can be sure... if it's Westinghouse. To keep you comfortable on the hottest days & nights... PLUS A SELECT GROUP OF Women's Casual & Dress Shoes ALSO AT A BIG 25% Off. Nugent's HARDWARE 22970 Pontiac Trail South Lyon 437-1747. Brader's DEPARTMENT STORE 141 E. Main 349-3420 Northville MICHIGAN HOURS: Daily 9 to 6 - Friday 'til 9 P.M.

Keds grasshoppers casuals. 25% Off. SOME SIZES ARE GONE BUT THERE IS STILL A GOOD SELECTION. PLUS A SELECT GROUP OF Women's Casual & Dress Shoes ALSO AT A BIG 25% Off.





# Spear Weighs Roth Decision

Although US District Court Judge Stephen Roth's desegregation plan has excluded Northville, Superintendent Raymond Spear said this week that "No great weight has been lifted from my shoulders."

He noted that the potential impact of the decision is twofold.

"Northville could be included at any point in time," Spear explained, "if the materials set up by Judge Roth feels this community is vital to the busing plan."

"If the desegregation program should be established and implemented in the metropolitan area," he continued, "it's only a matter of time that action may be taken to expand the plan and include Northville."

Spear said he anticipates the district may face a more immediate problem—"more rapid growth than we had planned for, caused by people moving from the 52 districts involved in the order."

The superintendent said the district "is not sitting on its hands, even though we have not joined others in the suit."

"We have provided our attorney with all the materials and information Roth has requested of these districts in the suit," Spear explained.

"If something happens and we wish to join the suit, our position is in an adequate position to defend the district, should it come to that," he said.

# Year Round Staff on Job

Staff members involved in Northville's experimental year round school program have begun selecting teaching materials and planning for the program.

According to Miss Florence Panattoni, curriculum director, the staff has "studied materials it needs for the program and has worked on placement of children in the program."

Those working with the experimental program include Mrs. Virginia Kritz, Mrs. Coral Adas, Miss Patricia Martin, Mrs. Marjorie Sliger, James Honey and Jack Thibault.

William Craft, Amerman Elementary principal, Mrs. Marian Hines, librarian, and Miss Panattoni, are working closely with the staff to prepare for the July 31 opening of the program.

The experimental year round school program will utilize the 45-15 concept, alternating 45 days of the school with 15 days of vacation.

A total of 172 student volunteers are involved in the program, Miss Panattoni said.

Prior to the opening of school July 31, staff members will be involved in several workshop sessions, including a tour of Valley View School District in Illinois which is operating on the year round school concept.

# NOTICE OF PUBLIC HEARING CITY OF NOVI, OAKLAND COUNTY, MICHIGAN

NOTICE IS HEREBY GIVEN that a Public Hearing to consider several amendments to the Zoning Map of the Zoning Ordinance No. 18, of the City of Novi will be held at 8:00 P.M. E.S.T. on Monday, July 10, 1972, at the Novi Community Building, 28550 Novi Road, Novi, Michigan, 48050, as follows:

1. On petition of the Slavic-Wilson Company, the Board has been asked to rezone Parcel MN43B and a portion of parcel MN43A from CN Neighborhood Shopping District and R-2-A Restricted Multiple Family Residential District to C-1 Local Business District as follows:

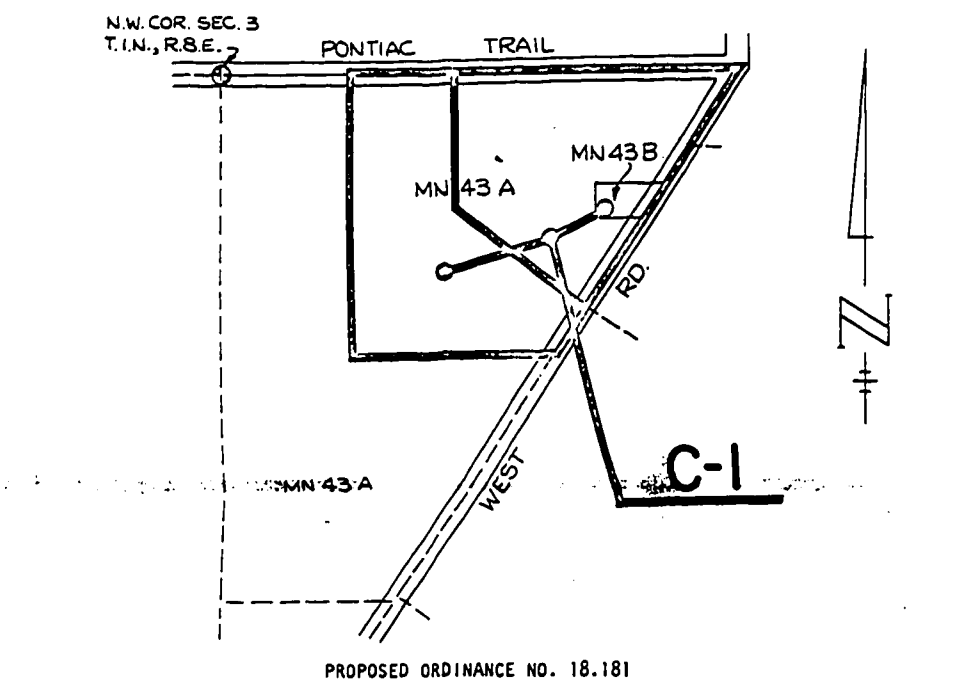
To Rezone a portion of the NW 1/4 of Section 3, T1N, R8E, said portion being parcel MN43B and a part of MN43A, and described as follows: Beginning at a point on the north line of said Section 3 located distant S. 89 degrees 55' E. along said north line 740.84 ft. from the NW Corner of Section 3, thence S. 0 degrees 05' W. 400.0 ft., thence S. 56 degrees 59' 28" E. 520.63 ft. to the centerline of "West Road", thence N. 34 degrees 59' E. along said centerline 835.0 ft., thence N. 89 degrees 55' W. 915.0 ft. to the point of beginning containing 9.2 acres more or less.

From C-N Neighborhood Shopping District, to C-1 Local Business District.

And to Rezone a portion of the NW 1/4 of Section 3 T1N, R8E, said portion being a part of parcel MN43A and described as follows: Beginning at a point on the north line of said Section 3, said point located distant S. 89 degrees 55' E. along said north line 418.84 ft. from the NW corner of said Section 3, thence S. 0 degrees 05' W. 823.65 ft., thence S. 89 degrees 55' E. 662.53 ft. to centerline of "West Road", thence N. 34 degrees 59' E. 169.20 ft., thence N. 56 degrees 59' 28" W. 520.63 ft., thence N. 0 degrees 05' E. 400.0 ft. to said north line of said Section 3, thence N. 89 degrees 55' W. 322.0 ft. to the point of beginning containing 8.757 acres more or less.

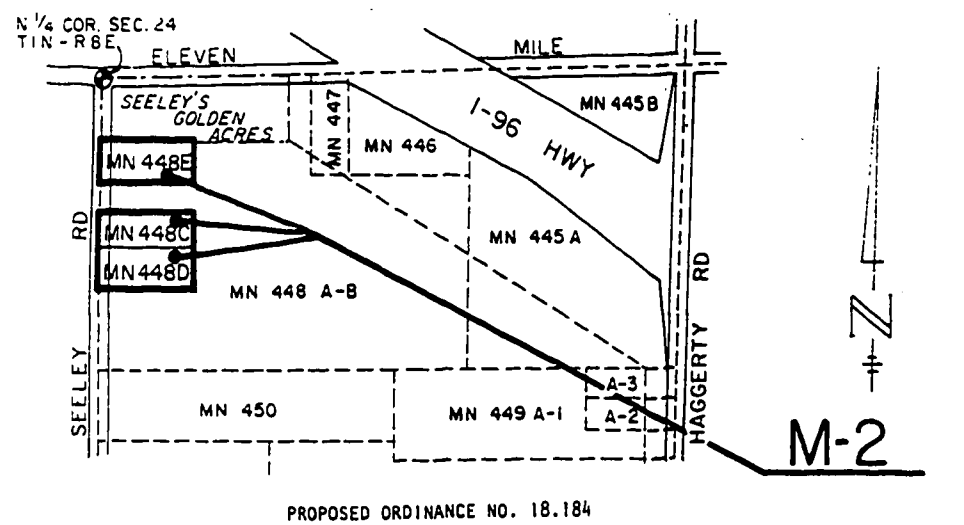
From R-2-A Restricted Multiple Family Residential District, to C-1 Local Business District.

Said property is located at the southwest corner of Pontiac Trail and West Road, as indicated on the map below.



On Petition of William & John Klasermer, the Board has been requested

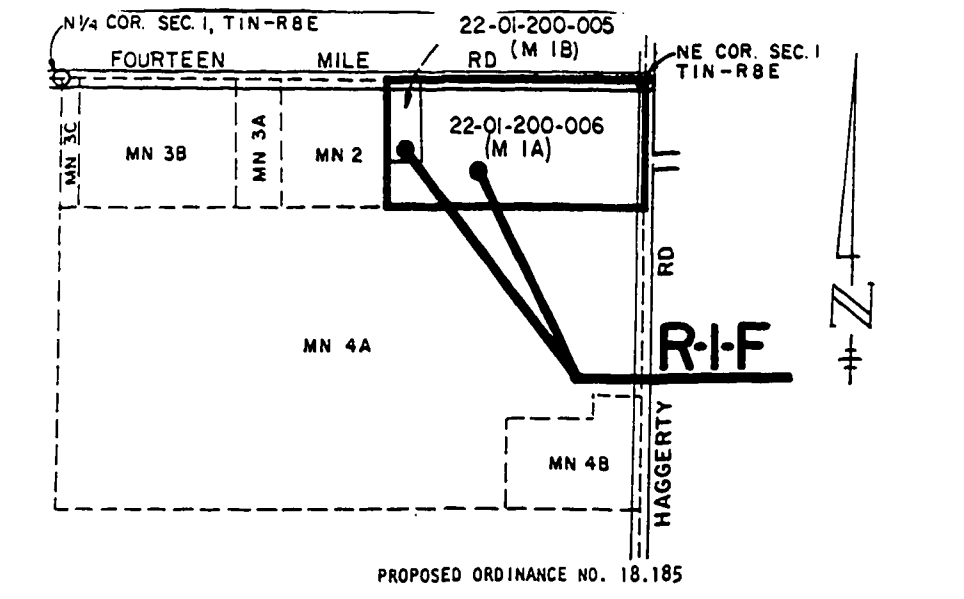
2. To Rezone the following parcels located in the NE 1/4 of Section 24, T1N, R8E, MN 448C, MN 448D, MN 448E From R-1-H Country Homes District to M-2 Restricted Manufacturing District.



The Planning Board, on their own motion, proposed to zone five areas which were recently annexed from the Township of Novi, as follows:

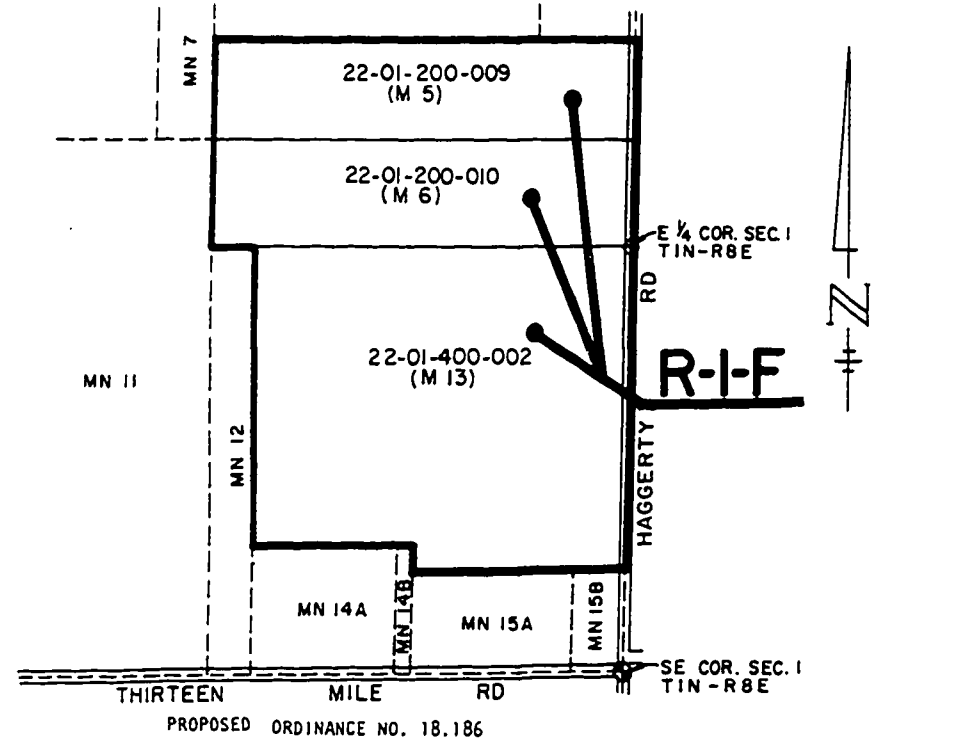
1. To Zone a portion of the NE 1/4 of Section 1, T1N, R8E, said portion formerly known as parcels M1A and M1B on the Township of Novi tax rolls, and presently designated as parcels 22-01-200-006 and 22-01-200-005 on the City of Novi tax rolls.

To R-1-F Small Farms District.



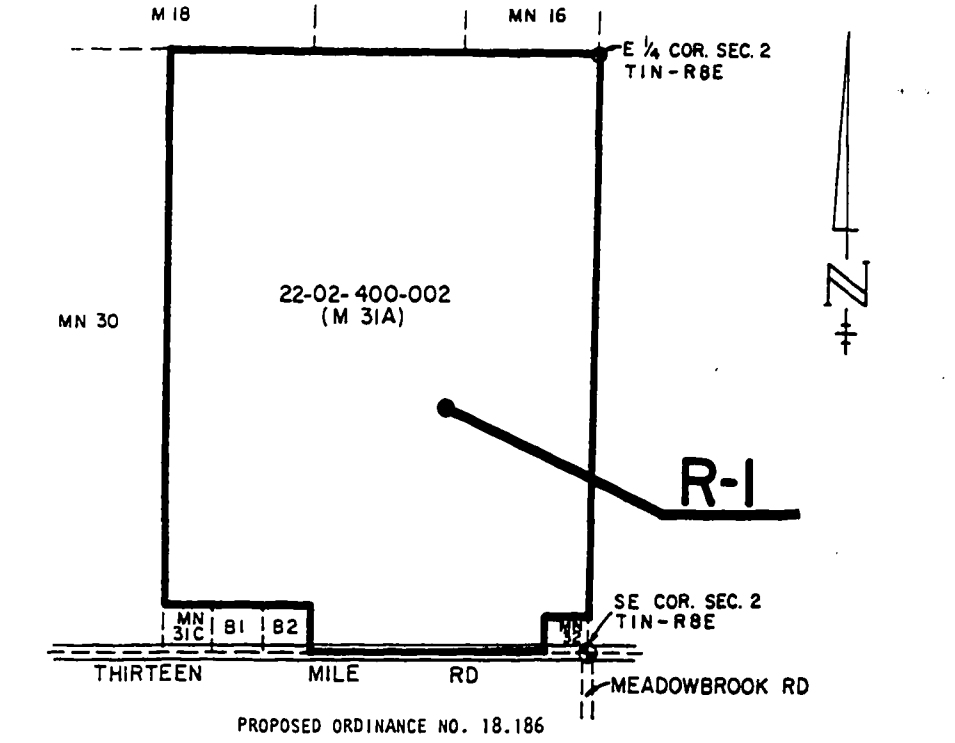
2. To Zone a portion of the NE 1/4 and the SE 1/4 of Section 1, T1N, R8E, said portion formerly known as parcels M5, M6 and M13 on the Township of Novi tax rolls, and presently designated as parcels 22-01-200-009, 22-01-200-010 and 22-01-400-002 on the City of Novi tax rolls.

To R-1-F Small Farms District.



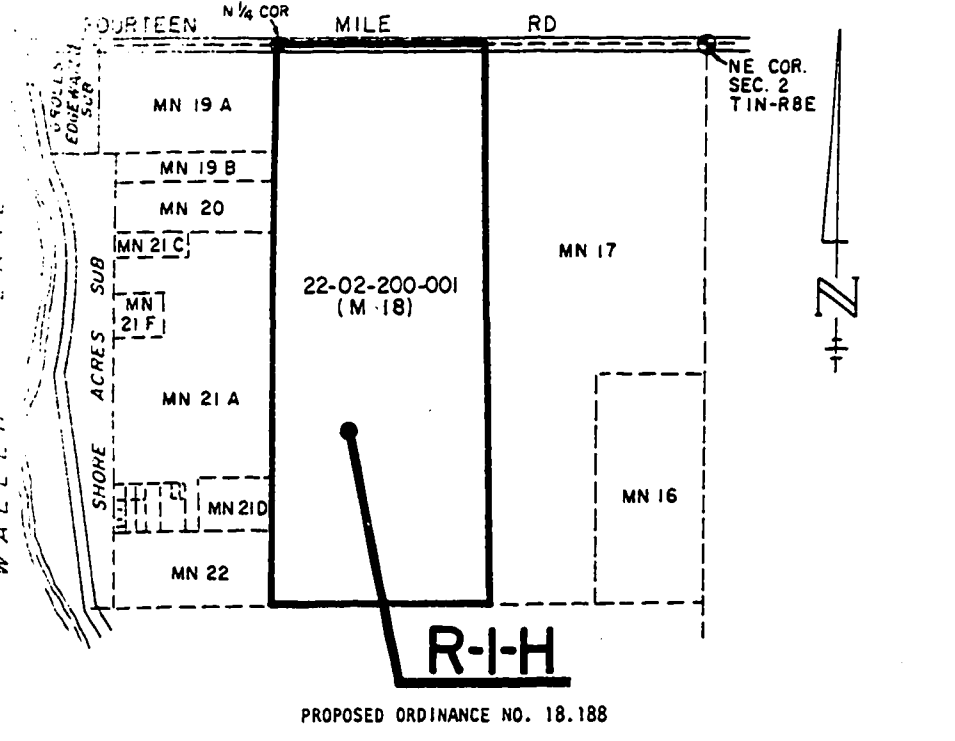
3. To Zone a portion of the SE 1/4 of Section 2, T1N, R8E, said portion formerly known as parcel M31A on the Township of Novi tax rolls, and presently designated as parcel 22-02-400-002 on the City of Novi tax rolls.

To R-1 One Family Residential District.



4. To Zone a portion of the NE 1/4 of Section 2, T1N, R8E, said portion formerly known as parcel M18 on the Township of Novi tax rolls, and presently designated as parcel 22-02-200-001 on the City of Novi tax rolls.

To R-1-H Country Homes District.



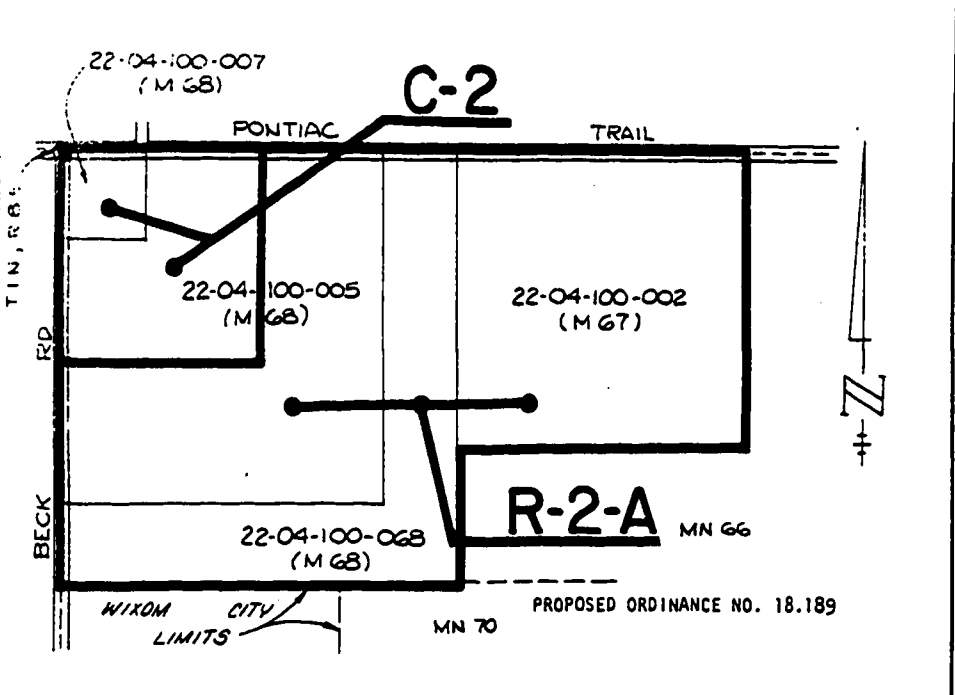
5. To Zone a portion of the North 1/2 of Section 4, T1N, R8E, said portion formerly known as parcels M67, and M68 (except the North 933 ft. of West 933 ft. of M68) on the Township of Novi tax rolls, and presently designated as parcels 22-04-100-002, 22-04-100-006, and (part of) 22-04-100-005 on the City of Novi tax rolls.

To R-2-A Restricted Multiple Family Residential District.

And to Zone a portion of the NW 1/4 of Section 4, T1N, R8E, said portion described as the North 933 ft. of the West 933 ft.

Said portion formerly known as (part of) M68 on the Township of Novi tax rolls, and presently designated 22-04-100-007 and (part of) 22-04-100-005 on the City of Novi tax rolls.

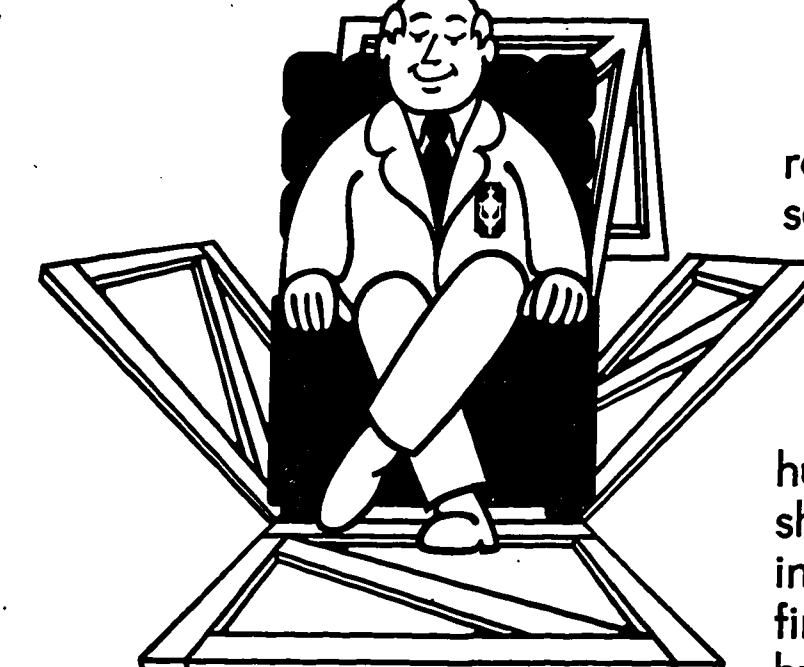
To C-2 General Commercial District.



NOTICE IS FURTHER GIVEN that a copy of the proposed amendments may be examined at the office of the City Clerk, 28550 Novi Road, Novi, Michigan, 48050, during regular office hours until the date of the hearing.

CITY OF NOVI PLANNING BOARD  
James Cherfil, Secretary  
CITY OF NOVI COUNCIL  
Mabel Ash, Clerk  
Publish 6-22-72

# Joshua Doore says: "WE'RE OVERWHELMED"



Bless you all.

When Joshua Doore created the revolutionary Doore Way to buy furniture, he said "Build a better furniture store and the world will beat a path to your armchair."

And beat a path you did... overwhelmingly!

You came by the thousands to see our huge 3 1/2 million cubic feet of warehouse and showroom. You drove miles to our first inconvenient location to save 20% to 40% on fine brand name furniture. You walked through hundreds and hundreds of our decorated room

settings. You picked it out in the showroom, picked it up at the warehouse, and took it home in the crate.

Because our unique price tag gives you a choice of two ways to buy furniture: the Deluxe Way, which includes the frills for more. Or the Doore Way, which gives you the furniture for less.

We're encouraged. We're putting even more fine brand name items on display this week. And our fork lift trucks are refueled. And our warehouse is bulging again... to overwhelm you again.

# SECOND BIG WEEK GRAND OPENING SALE

Deluxe Way: \$199.95  
Doore Way:

## \$138.00

**Watson Baker Velvet Loveseat**

Sungold velvet loveseat styled by Watson Baker. With deep, fully tufted back. Plump reversible cushions. Kickpleat skirt. A compact 54 inches, at a very compact price. Pick it out in our showroom, take it home in the crate.

Deluxe Way: \$314.95  
Doore Way:

## \$168.00

**Rowe Sofa Bed**

Famous nationally advertised "Sleep-a-Sofa" with Rowe's sturdy construction. Deep foam mattress. Herculon upholstery. Smart green tweed or distinctive gold and green plaid. Back tilts for easy cleaning, comfortable TV headrest. Pick it out in our showroom at tremendous savings.

**How do you get brand name furniture at packing crate prices at Joshua Doore?**

Our revolutionary new price tag is one way. It helps you save money, by giving you the chance not to pay for what you don't want. For example, if you don't want decorator service, you don't have to pay for it. If you don't want special order service and layaway, you don't have to pay for it.

(At ordinary furniture stores you're probably paying for these services whether you like them or not. They're usually figured into the "retail" price.)

At Joshua Doore you simply choose the Deluxe Way or the Doore Way to buy.

It's a choice between getting the frills for more. Or the furniture for less.

Either way...you get your money's worth. And naturally, convenient credit terms are available.

**Joshua Doore**  
furniture warehouse and showrooms

Item: **BASSETT COCKTAIL TABLE**

Now there are two ways to buy furniture:

**The Deluxe way:**  
106.95

**The Doore way:**  
80.22

For those who desire maximum savings just pick up the price tag in our showroom. You'll see the difference between the two ways. No waiting, no delivery. One of the ways to save money is to buy furniture at the lowest possible price. You can't miss it. See you there.

**The finest brand name furniture.**

Our brand names read like a Who's Who in fine furniture manufacturing: Bassett, Lane, Brohill, American of Martinsville, Rowe, Serta, Singer, Kohns-Stengel, Brookwood, and dozens more.

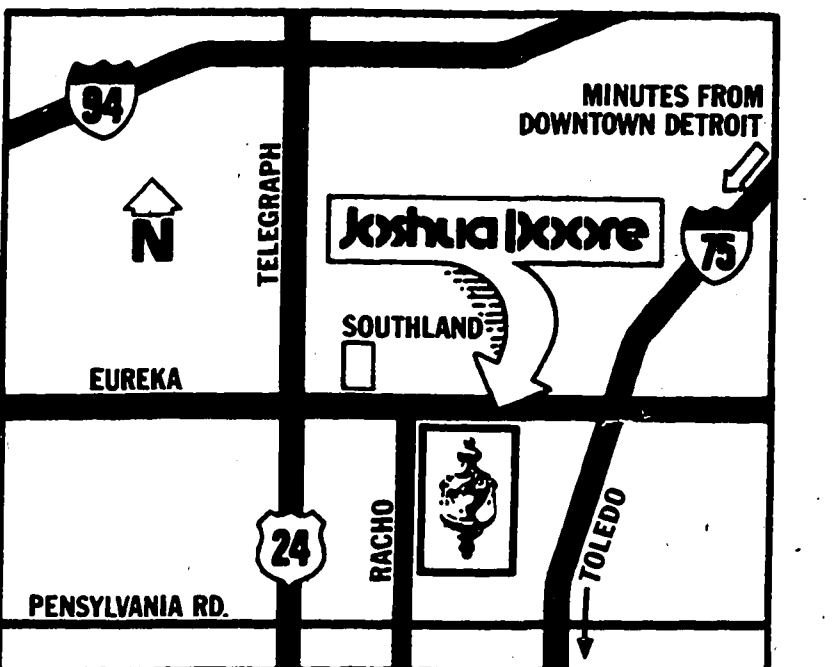
**The frills for more.**

Read about them right on the tag. They're yours if you insist. At a price.

**The furniture for less.**

Read about it right on the tag. No frills, no extras. Just furniture. Pick it out in the showroom, pick it up at the warehouse, and take it home in the crate!

**3 more days to win a '72 Maverick**



**Now everyone's got an Uncle in the furniture business**

# Joshua Doore

furniture warehouse and showrooms  
I-75 at Eureka Road (near Southland)









Crossword Puzzle

Crossword puzzle grid with clues for 'College Days' and 'Here's the Answer'.

Michigan Mirror

State Beefs up Foreign Exports

LANSING—Exporting is one of the main areas of concentration in effort to make Michigan's economy strongest and more diversified. Already, nearly 100,000 Michigan men and women are employed directly or indirectly in the manufacture of products that are exported outside the country.

This is this type of sale which helps diversify the Michigan economy and make the state less dependent on the auto industry for its well-being. MICHIGAN farm products hit a record sales high in 1971. The state sent more than \$113 million worth of products overseas—an increase of more than 20 percent over the previous second best total.

SWISS investors are involved in expanding a finished steel aluminum plant in Jackson. One of Canada's biggest steel manufacturers, Algona Steel, has set up a subsidiary near the American Soo in the Upper Peninsula, where it is building a \$1 million steel tubing plant. These three instances of foreign money will mean a total of 500 jobs for Michigan workers at the start.

Gov. William G. Milliken and other state officials also have been working to entice firms from other states and from Canada to expand in Michigan rather than in their home areas. Milliken went to Toronto in early May to meet with Canadian businessmen. There's much work to be done yet in getting a more diversified economy for Michigan. But the developments on the foreign front show progress is definitely being made.

Babson Report

New Auto Power Source Sought

WELLESLEY HILLS, Mass. - The protests of ecologists, conservationists, and anti-pollutionists against the internal-combustion engine and its relative drawbacks have had plenty of time to be heard. Because of the resultant passage of stiff anti-pollution laws, the automotive industry and private groups are now avidly seeking the most feasible means and methods of replacing the conventional reciprocating type of internal-combustion engine with an engine less damaging to the atmosphere.

methods are being used by the manufacturers to resolve the emission problems. Up to this point, the most effective means of cleaning up present reciprocating engines appears to be through the use of catalytic converters, along with continued motor modifications and adjustments. IT SEEMS likely that in the near future a new or alternative power source will be adopted by the automotive producers. There are many possibilities under consideration—steam, electricity, gas, diesel, jet, turbine, rotary, etc.

enthusiastic, enough so to invest some \$50 million over a five-year period for the nonexclusive rights. In addition, GM has set up operations for researching and developing the rotary engine. So, the Research Department of Babson's Reports feels that some form of the rotary will soon make its appearance in a domestic production run, probably in the 1974 model year. A JAPANESE rotary-powered auto, the Mazda, is being imported and merchandised on the West Coast. An estimated 20,000 were sold in the U.S. last year, and forecasts place 1972 sales at triple that amount. Model lines, dealerships, and territories are being expanded.

Ford and Chrysler have also negotiated for rights on the Wankel. But GM has bought the engine rights with no further royalty payments after the final purchase bill is paid at the end of 1975. While the internal-combustion engine will be around for some time yet, the rotary—on balance—is smaller, lighter, simpler, and contains fewer moving parts. It uses less fuel compared with conventional engines. With so much going for it, chances are that it could become a predominant power source for autos within the foreseeable future. At present, Babson's Reports is favoring the common stock of General Motors as a buy candidate in this interesting field of development.

When the final vote came, it took House leaders three hours to find the votes needed to put the bill through. And it took all the bi-partisan cooperation that could be mustered as 30 Democrats and 27 Republicans were the final majority for it. It may be, however, that voters are smarter than the lawmakers think. They may realize it takes more guts to vote for a needed tax increase than it does to sit back and say "no" with the knowledge there will be enough "yesses" to pass the increase, anyway.

GENERAL CONCERN

for cleaning up the environment has brought increased pressure on the auto makers to remove as many automotive-related pollutants as possible. Through programmed legislation there are existing standards that must be met and still others that must be complied with by 1975-1976. Auto producers involved must have their products certified and measured to be sure pollutants are within the limitations allowable.

More than a dozen established summer theaters in Michigan will offer stage plays and musicals this season, with many featuring professional actors, according to Automobile Club of Michigan. However, there are other towns which offer community theaters featuring local talent operating during the summer, Auto Club points out. Dean of the summer theater circuit is the Barn Theater near Augusta, between Kalamazoo and Battle Creek, now open for its 27th season with 12 plays scheduled through early September. Located west of Augusta on M-96, the theater is concrete-and-wood proof of Jack and Betty Rogotzy's success story. In 1949, after three years of operating in Kalamazoo, they obtained and moved to their present site, a never-completed dairy barn.

Today's Barn Theater, an impressive red structure, is surrounded by a complex of other production buildings, acres of green grass and white fences. One of the most colorful summer theater productions is in downtown Coldwater near the junction of US-12 and 149. Seven Broadway plays are offered through August in the Historic, 600-seat Tibbits Opera House. Built by Coldwater Mayor Bart S. Tibbits in 1882, the Opera House for nearly 30 years presented some of the big names of the theater. Converted to a movie house in the 1920s, the theater later was slated for demolition but was purchased by local citizens to restore as a community enterprise. The Tibbits Opera Foundation, a non-profit organization, was organized in 1963 and nearly \$170,000 has been invested so far in the continuing restoration program. Since 1955, Ruth Bailey Swigart, a Cincinnati housewife, has been the energetic organizer and manager of the successful, Cherry County Playhouse in Traverse City, one of the state's best-known summer theaters. Now in its 18th season, the Cherry County theater traces its beginnings to tent performances which nonetheless attracted some of the big names in show business—Joe E. Brown, Andy Devine, Reginald Gardiner, Edward Everett Horton, Pat O'Brien and Cesar Romero among them. The 1972 season, which runs from July through early September, will include Frank Sutton, Buddy Ebsen and Pat Paulsen among its performers. The Traverse City playhouse is part of the multi-million dollar Park Place Motor Inn, at East State and Park Streets, two blocks south of US-1. Another feature of the Cherry County Playhouse is the children's plays on Friday mornings presented by the Cherry County Junior Continued on Page 5-B

Summer Theater Time

JAMAICAN POOLS advertisement with phone number 477-4848.

GREEN RIDGE NURSERY INC. advertisement for lawn care and plants.

ELY GARDEN CENTER advertisement for garden supplies.

Sun & Snow advertisement for pool equipment.

Garden Values advertisement for garden supplies.

Horse's Mouth

This column is open to news of all breeds of horses and ponies. Send your questions, comments and horse show news to "Horse's Mouth", care of South Lyon Herald, South Lyon, MI 48178.

RIDING ON THE ROADS In many suburban areas good riding trails are not available for pleasure horse owners. Some times this means the roadside is the only place to ride. Although I do not want to discourage anyone from riding if the roadside is all that is available, there is some danger involved. So before you mount up, there are a few precautions you should take.

Next problem DOGS—bring your horse to a walk when passing a dog. This slower gait does not excite the dogs as much. The horse will soon become accustomed to dogs and walking when approaching them.

Never let your horse eat any of the grass or weeds growing along the road. They could have been sprayed with weed killer. Also roadside ditches are not safe for drinking. The water may run off a field or orchard which had just been sprayed or the water may have been used to wash out the machinery which had been used in spraying.

The KEE-WAH-DIN Rodeo will be held June 30 at 7:30 p.m., July 1-2 at 2 p.m., at Kee-Wah-Din's Post, with admission \$3 for adults, \$1 for children.

Sally Saddle

See Boom In Travel If Michigan's unexpected vacation travel increase registered so far this year is any indication of the state's economic health, then boom times are just around the corner, according to Automobile Club of Michigan General Manager Fred Rehm.

Continued on Page 14-B

Kroger advertisement for GAMERAMA with a \$1,000 prize and 100 extra top value stamps.

WHOLE HAMS 68¢ and CHUCK ROAST 58¢ advertisement with images of hams.

Standing Rib Roast, Kansas City Steak, and other meat products advertisement.

MORTON DINNERS 3 for \$1 advertisement for dinner products.

Country Oven Sandwiches and other food items advertisement.

WATERMELON 99¢ advertisement with images of watermelons.

Michigan Strawberries and other grocery items advertisement.

600 Top Value Stamps advertisement for various grocery products.



CLASSIFIED ADVERTISING

NOTICES
1-1 Happy Ads
To our Dad on his 30th Birthday...

REAL ESTATE FOR SALE
2-1 Houses For Sale
COUNTRY Home, over 1 1/2 acres with shade and fruit trees...

1-2 Special Notices
THE FISH (Formerly Project Help) Non-financial emergency assistance...

1-3 Card Of Thanks
I want to thank all my friends and relatives for the lovely flowers...

1-5 Lost
LOST June 18, Siberian Husky, female, answers to Heidi...

1-6 Found
FOUND-Tri-color collie, New Hudson area, call 437-3180

1-7 Mail Box
Mail awaiting pick-up at local newspaper office boxes.

ACREAGE FROM ONE TO TEN ACRES
J. L. HUDSON REAL ESTATE
601 S. Lafayette St. South Lyon

NEARLY NEW COLONIAL BILEVEL duplex, quality built, each 2 bedrooms, hot water heat, terrapane, on 2 nice lots close to Brighton & I-96 & US 23. \$36,500.

WANT-AD CLASSIFICATIONS
Acreage For Sale 24 Farm Animals 5-3 Mobile Homes 2-3
Animals 5-1 Farm Equipment 4-4 Mobile Home Sites 3-5

479 S. MAIN ST. PLYMOUTH 453-2210
W. of Northville On 2 acres. See this almost new 3 bedroom brick colonial home with fireplace, den or possible 4th bedroom, kitchen with built-ins, first floor laundry and attached 2 car garage. All electric heat. \$42,900.

Now Open For Inspection
12600 E. Grand River East of Brighton
The NEW WICKES FACTORY-BUILT HOMES OF THE '70's

NOLING MERRIMAN REALTORS
1176 S. Main Plymouth 201 S. Lafayette South Lyon
453-6800 • 437-1600 "the professional people"

Older 2 Story Country style house with large corner city lot with many extras. This home must be seen to appreciate its full potentials. Priced for quick sale at \$29,900.

Very desirable 34.23 acres near Salem. Don't miss this. Rolling with great possibilities. Great for a horse farm. Small house. Good barn and other out buildings.

Vacant lot - 100 x 250 in nice country subdivision, 1 mile from expressway. South Lyon area. Newman Farms. VCO 10131

3 B.R. COUNTRY RANCH HOME, full basement, large site, cyclone fence. \$35,000. MOBILE HOME, 12' x 60' VALIANT, nice 60x150 lot included. \$13,500. Terms.

J. R. Hayner Insurance & Real Estate
408 West Main Street BRIGHTON
AC-7-2271 AC-9-7841
Open Every Day 9 to 6 p.m. Any Evening By Appt.

2-1 Houses For Sale
2 BR year around home - maintenance free - beautiful view of Woodland Lake. \$27,500. ALH 10208

OPEN HOUSE Sat.-Sun. 2-5 p.m.
5348 Van Winkle - Brighton
3 Bedroom Brick Ranch. Full Basement. Forced Hot Air, Formica Cabinets and Top, Carpeting.

VILLAGE OF MILFORD
3-Bedroom Tri-Level 2 1/2-Car Garage City Water and Sewer \$28,000

HIGHLAND TOWNSHIP
3-Bedroom Brick Ranch 1 Acre of Land Heated Gunite Swimming Pool Central Air \$45,000

CLAY STOKES REALTY INC.
684-1245 Milford, Mich.
FOR THE HANDY MAN 3 bdrm. older home, \$12,900, \$2000 down. \$100 month, 8 1/2 percent interest Land Contract.

EARL KEIM REALTY REALTORS
NORTHVILLE AREA HOMES JUST LISTED Make it a point to see this 1971 built 3 bedroom ranch with large kitchen, basement, and carpeting throughout.

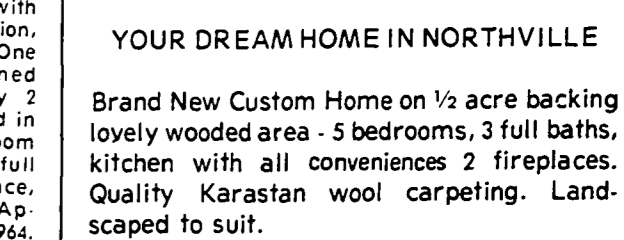
VACANT LAND
Lakefront lot with beautiful sandy beach. Priced at \$11,000.00. Corner lot with trees and lake access. Priced at \$5,000.00.

330 N. CENTER Northville
BRIGHTON AREA HOMES HAPPINESS IS well maintained 4 bedroom 1 1/2 story home in nearby Whitmore Lake for only \$22,900.

2649 E. GRAND RIVER, HOWELL (517) 546-5610
SERVING ALL OF LIVINGSTON COUNTY

Ken Shultz Agency
9909 E. Grand River Brighton, Michigan (313) 229-6158

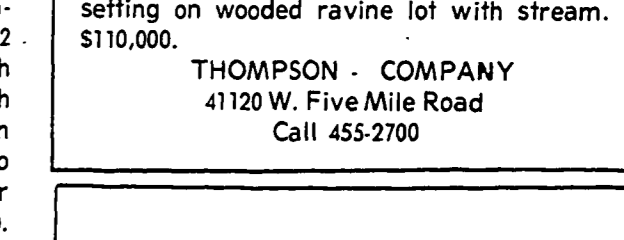
STARTER HOME:
3 bedrooms, ceramic bath, kitchen with new cabinets and formica counter tops, new carpeting throughout, completely remodeled, alum. siding. Land Contract available. \$20,500.00.



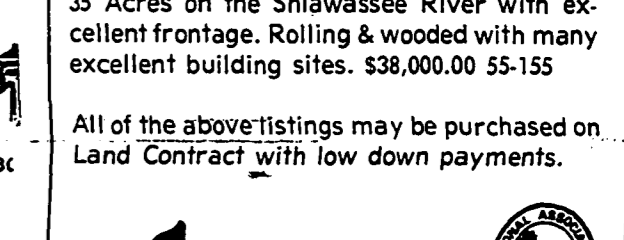
YOUR DREAM HOME IN NORTHVILLE
Brand New Custom Home on 1/2 acre backing lovely wooded area - 5 bedrooms, 3 full baths, kitchen with all conveniences 2 fireplaces. Quality Karastan wool carpeting. Landscaped to suit.



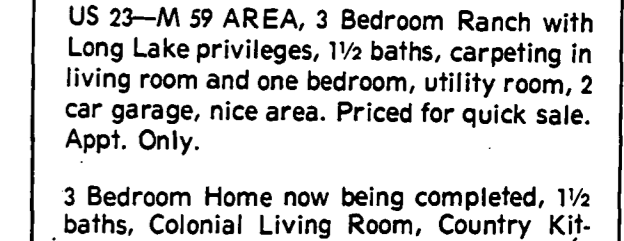
EXECUTIVES ATTENTION
A beautifully planned courtyard leads you into this GRACIOUS home, being offered in NORTHVILLE TOWNSHIP. Over 5,000 sq. ft. of living area enhanced by a breathtaking setting on wooded ravine lot with stream. \$110,000.



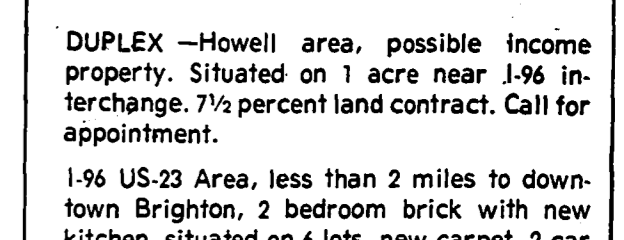
HASENAU BUILDERS
Your lot or ours Your plan or ours We have Mortgage Money 44 years building experience



Ralph L. Banfield REAL ESTATE
US 23-M 59 AREA, 3 Bedroom Ranch with Long Lake privileges, 1 1/2 baths, carpeting in living room and one bedroom, utility room, car garage, nice area. Priced for quick sale. Appr. Only.



C&L HOMES
3 bedroom, brick ranch 40' wide, full bsmt. over 1000 sq. ft. Insulation walls & ceiling - hardwood floors. Will build within 30 miles of Detroit. Model and office at 23623 W. McNichols, 2 bks east of Telegraph. Owner Participation Welcome.



Earl Kline Real Estate
9984 E. GRAND RIVER BRIGHTON, MICHIGAN 227-1021







**You'll get  
a bunch  
of results!**

That's the way it is when you advertise items for sale in the Classified pages of this newspaper. Somebody is sure to be looking for the very item you'd like to sell.

To start results coming your way in bunches, dial our office to place a low-cost ad telling our readers what you have to sell.

PLACE YOUR FAST-ACTING WANT-AD BY CALLING YOUR AREA OFFICE . . .

Northville Record - Novi News

South Lyon Herald

Brighton Argus

**349-1700**

**437-2011**

**227-6101**

7-8 Autos	7-8 Autos	7-8 Autos	7-8 Autos	7-8 Autos	7-8 Autos	7-8 Autos
1969 Pontiac Tempest, 350 V-8, power steering, Custom Rally wheels, vinyl top, low mileage, reasonable. 229-7804 Brighton. A-12	'62 Ford Falcon station wagon. Runs very well. Call 349-2524.	SPECIAL LOW price! 1969 Dodge Super Bee in excellent condition with new tires, 383-1/2 speed Ram. Air, stereo tape deck. A blue beauty. Only \$1400. Call 349-0281. A-12	BSA 500, 1970, good condition, also VW Fastback 1968, best offer. 878-3022 Before 2 p.m. A-13	1969 AUSTIN America, 4 speed, auto, like new, less than 20,000 miles, best offer, must sell. 227-7060 or collect 1-833-9100. A-12	1968 PONTIAC Grand Prix, good cond, \$1295. Call DU 2-4488 Detroit or weekends 227-7704 Brighton. ATF	1972 Ford Grand Torino, 302 engine, vinyl top, air, stereo, P.S. PB. Brighton. 227-6797. A-11
1969 RED Buick Opel Kadett, V-6, good condition, 349-2723. A-13	1968 GOLD Cadillac convertible, fully loaded, real sharp, \$2,400. 229-8430 Brighton. A-12	1967 FORD LTD, 390 engine, P.S. P.B., Brighton 229-4247. A-12	1971 OPEL, 1900 series, 2 dr., low mileage, like new, wife's car. Must sell. 512-751-1517-546-2836. A-12	1967 FORD Ranch Wagon, V8, automatic, 74,000 miles, power steering, 2400. 229-6556 Brighton. A-12	1966 DODGE Coronet, V-8, automatic, power steering, good condition, good tires, \$450. 249-3522. A-12	1969 Ford Custom Hard-top, P.S. low mileage. Excellent condition. 349-1876. A-12
1967 FORD Camaro, low mileage. One owner, 6 cylinder, \$1000. 349-2161. A-12	1970 VEGA, automatic, almost like new, good running condition. \$1300. 437-3505. H-25	1970 THUNDERBIRD—very good condition—very little rust. Inside like new. Best offer. Brighton 227-7870. A-12	FORD 1966, XL convertible. Buckets, console, automatic, P.S., radio. One owner, very reasonable. 455-2187. A-12	1966 BARACCUA, good condition, 6 cyl. \$350. Brighton 229-7075. A-12	1968 Buick Electra 225, very clean-good tires, tape deck \$1300 437-4377 H-25	1969 Ford Custom Hard-top, P.S. low mileage. Excellent condition. 349-1876. A-12
1968 CAMARO, low mileage. One owner, 6 cylinder, \$1000. 349-2161. A-12	1970 VEGA, automatic, almost like new, good running condition. \$1300. 437-3505. H-25	1969 PONTIAC LeMans, Sport Coupe, V-8, power steering and brakes. Auto. \$1650. Brighton 227-8173. A-11	1964 MERCURY Comet, 4 door, \$100. See at 9444 Hyle Rd., Brighton, 227-6366. A-12	1968 JAVLIN, 4 on the floor, \$1050. 517-546-0941 Howell. A-12	1969 CORVETTE, like new, must sell. 437-7025. H-25	1969 Ford Custom Hard-top, P.S. low mileage. Excellent condition. 349-1876. A-12
1968 CAMARO, low mileage. One owner, 6 cylinder, \$1000. 349-2161. A-12	1970 VEGA, automatic, almost like new, good running condition. \$1300. 437-3505. H-25	1968 BARACCUA, good condition, 6 cyl. \$350. Brighton 229-7075. A-12	1968 JAVLIN, 4 on the floor, \$1050. 517-546-0941 Howell. A-12	1969 CORVETTE, like new, must sell. 437-7025. H-25	1969 Ford Custom Hard-top, P.S. low mileage. Excellent condition. 349-1876. A-12	1969 Ford Custom Hard-top, P.S. low mileage. Excellent condition. 349-1876. A-12

**Get A Full Tank of Gas . . .**

When you buy your next car from me, it's my way of saying "thank you" . . . and you'll get the best deal on a new or used . . .

TRUCKS VEGAS CHEVROLETS

**ASK FOR**

**John Sullivan 474-0500**

**ROGER PECK CHEVROLET**

on Grand River  
just west of Middlebelt

Daily till 6 p.m.  
Mon. & Thurs. till 9

**USED PICK-UP**

1-'69 Ford 250 3-Speed  
1-'65 Ford 250 4-Speed  
1-'68 Dodge 1/2 Ton Automatic  
1-'68 GMC 1/2 Ton Automatic  
2-'68 Ford Rangers Automatic

The Good Guys at:

**G. E. Miller Sales and Service**

127 Hutton, Northville — 349-0661  
35 Years of Dependable Service of Northwestern Wayne County

**NEW 1972 PICK-UPS**

**D-100 D-200**

**CAMPER SPECIALS**

**B-300 MAXI-SET-UP**  
for camper conversion.

The Good Guys at:

**G. E. Miller Sales and Service**

35 YEARS OF DEPENDABLE SERVICE TO NORTHWESTERN WAYNE COUNTY

127 Hutton, Northville  
349-0661

Try out a Ford at Volkswagen.

Try out any of the cars people trade in for new VWs. We get all kinds. But we don't sell them again just like that. We check them out first. Give them the 16-point inspection. Fix whatever needs fixing. Then guarantee the repair or replacement of every major working part\* 100% for 30 days or 1000 miles. Whichever comes first. Incidentally, the guarantee comes with all our used cars.

Even the Volkswagens

- \*Engine \*Transmission \*Rear Axle \*Front Axle Assemblies \*Brake System \*Electrical System

1967 FORD MUSTANG 2-Dr. Hardtop, V8, automatic, pow. steering, radio, whitewalls, \$1097  
1971 FORD RANCHERO V8, automatic, power steering, power brakes, vinyl top, with rear cover . . . . . \$2197  
1971 FORD LTD SQUIRE WAGON V8, automatic, power steering, vinyl top . . . . . \$2797

**TOM SULLIVAN VOLKSWAGEN**

25400 W. 8 Mile — 353-6900

SERVICE HOURS  
7 a.m.-7 p.m.  
Saturday 7 a.m.-7 p.m.

**15 ACRES OF**

**FACILITIES**

- \*New & Used Cars
- \*Top Dollar Paid For Used Cars & Trucks
- \*Service — Paris
- \*Bump Shop

If anyone says he can sell for less than . . .

**ROGER PECK . . . he's just got to be kidding.**

474-0500

**ROGER PECK**

30250 Grand River  
Just West of Middlebelt

**OPEN**  
Mon. & Thurs. 'til 9  
Open all day Saturday

**IT'S YOUR MONEY!**

Don't blow it on a bad investment when you're thinking about a new car. Talk to . . .

**Clayton**

Cadillac - Oldsmobile Jeep

2321 E. Grand River  
Howell 546-2050

**MARK**

MARK FORD SALES SERVICE SPECIAL

Front End Alignment \$13.95

FREE WHEEL BALANCE  
Frt. Only  
Wheel Weights Extra

WE SERVICE WHAT WE SELL

**See Mike, Jim or Dick**

South Lyon - 437-1763 - 437-1764

THIS IS A PRETTY CHEAP AD. But if you sold NEW BUICKS for as LITTLE as we do — you couldn't afford a fancy ad either!

Why don't you come in and see what a terrific deal we can give you!

**JACK SELLE**

BUICK & OPEL

200 Ann Arbor Rd. at Lilly Rd., Plymouth 453-4111

**COMPARE OUR PRICES!**

Cuz we're Clearing 'em out — our entire stock of '72 FORDS and MERCURYS

If you deal before you see us — we both lose.

**WILSON**  
FORD & MERCURY SALES, INC.  
227-1171 BRIGHTON

**GREMLINS**  
FACTORY AIR CONDITIONING

AS LOW AS **\$2199**

**Fiesta American-Jeep**  
1205 Ann Arbor Rd.  
Plymouth, Michigan **453-3600**

**O'HARA**  
'72 DATSUN **\$1976**

DELUXE 2 DOOR

24,000 Mile USED CARS 2 Year Warranty

'69 DATSUN Wagon \$1195	'67 OPEL 5 door \$695
'71 DATSUN Coupe \$1695	'66 VW "Bug" Clean \$795
'71 DATSUN 2 door \$1895	'67 VW Convertible. Live it up! \$1095
'71 DATSUN Station Wagon \$2095	'68 PEUGEOT 3 door Sunroof \$995
'70 DATSUN Wagon Automatic \$1595	'70 NSU 2 door Sharp \$1095

34955 Plymouth Rd. at Wayne Rd. Sales Service Parts **425-3311**

**OPERATION COUNTDOWN**

Now in its second month — Van Camp continues to rocket the 1972 Chevys off the lot.

**1972 NOVA COUPE**  
Nova Coupe Orange Flame Black Cloth Trim Vinyl Roof Cover Black Sky Roof-Black P. Glide, P. Steering, W.Wall, Tires-Trim Rings - AM Radio . . . . .

**\$2683**  
Plus Tax & Plates

**1972 CHEVELLE SPORT COUPE**  
Mohave Gold, Black Cloth Trim, Power Glide Power Steering, Belted White Walls, Radio . . . . .

**\$2770**  
+ taxes and plates

**'69 Chevy Sedan '68 Super Sport**

**'70 El Camino** 400 cubic in., Turbo-Hydrumatic, P. Steering, P. Brakes, A Real Bargain!

**G. D. VAN CAMP CHEVROLET-OLDSMOBILE**  
603 W. Grand River Brighton  
229-9541  
Open 9-9 Monday thru Friday Saturday 9-5

**ONE WEEK ONLY!** AT **DICK MORRIS CHEVROLET**

**WE'VE ROLLED BACK PRICES**

**'72 IMPALA SPORT COUPE**  
Blue Turbo-Hydrumatic trans., power steering, power disc brakes, tinted glass, remote control mirror, white wall tires, wheel covers radio. Call stock No. 2421

**\$3099**

**'72 IMPALA CUSTOM COUPE**  
Stock No. 2439

**'72 CHEVELLE SS**  
3rd seat, One Owner New Car Trade. You'll have to hurry! Only . . . . .

**'68 Buick Skylark**  
2 Dr. Hd. Top. 383 V-8, Power Steering, AM/FM Radio, Cruise Control, Power Windows, Hurry! Only . . . . .

**'70 Dodge Charger**  
2 Dr. Hd. Top. 383 V-8, Power Steering, Steering, power disc brakes, tinted glass, remote control mirror, white wall tires, wheel covers radio. Call stock No. 2439

**'69 Chevrolet SS** . . . . . \$1895  
**'68 Buick Skylark** . . . . . \$1495  
**'71 Vega Hatchback** . . . . . \$2095  
**'70 Dodge Charger** . . . . . \$1895

**'72 KINGSWOOD 9 PASSENGER STATION WAGON**  
Turbo-Hydrumatic trans., power steering, rear window defroster, particulate control mirror, wheel covers, white walls, radio, luggage carrier, Phantom Blue. "AIR CONDITIONED"  
Stock No. 2535 **\$3875**

**'72 VEGA 2 DOOR SEDAN**  
Light green finish. Full factory standard equipment. Stock No. 2647 **\$1896**

CHOOSE FROM OVER **45** USED CARS **\$**

**ALL SPECIALLY PRICED FOR THIS EVENT!**

**'70 Chevy Impala** 4 Dr. Hd. Top. 352 V-8, Auto. Shift, Factory Air Cond., AM/FM Radio, Cruise Control, New Car Trade. Hurry! Only . . . . . **\$2195**

**'69 Impala Custom Coupe** V-8, Auto, Power Steering, power brakes, Vinyl Top, Factory Air Cond., One Owner, New Car Trade. Only . . . . . **\$1895**

**'69 Chevy Impala** 4 Dr. Hd. Top. V-8, Auto, Power Steering, Vinyl Top, Factory Air Cond., Radio, w/w. Dad will love this! Only . . . . . **\$1895**

**'71 Camaro** 350 V-8, Turbo Buick Console Shift, Radio, Rally Wheels, w/ Hurry! Only . . . . . **\$2795**

**'71 Camaro** 350 V-8, 4 spd. Power Steering, Power Disc Brakes, Factory Air Cond., Rally Wheels, Very, Very Sharp! Hurry! Only . . . . . **\$3095**

**'69 Mustang Mach 1** 351 V-8, Radio, New/wall, Rally wheels, Drive Like New, Hurry! Only . . . . . **\$1795**

**"NOBODY, ABSOLUTELY NOBODY, CAN BEAT OUR DEAL"**

**DICK MORRIS CHEVROLET**  
2199 HAGGERTY WALLED LAKE (Between Maple & Pontiac Trail.) **624-4500**



# Vacation Travel Increase May Spur Economy

up 21 percent as compared with the first four months last year.

## Campaign Trail...

Continued from Page 5-B

of discerning Democrats to vote several meaningful amendments on to the welfare bill.

"Enough legislators are finally recognizing that we cannot continue to spend but are going to have to put controls on all expenditures, and are going to have to take steps to insure that the money we do allocate is being spent wisely," Smart said.

Probably the longest sought and hardest fought for amendment was one added today to put a limit on the amount of money to be spent on A.D.C. he said.

"For the first time since this program was begun, we have finally said that we have just so much money for A.D.C. and if more people apply then we will have to reduce payments to everyone in order to accommodate the extras," Smart said.

## Brennan...

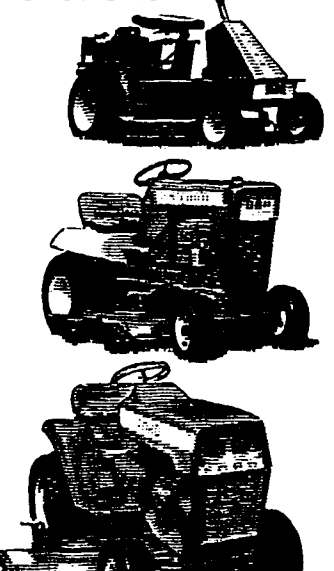
Oakland County Auditor James M. Brennan has opened his campaign for the Democratic nomination for county treasurer.

Brennan, 37, a Berkeley councilman and Chrysler Corporation profit analyst before his election in 1968 as a county commissioner, in 1971 drew the attention of his fellow commissioners by proposing austerity programs and curtailed spending, predicting that a changing economy would endanger the county budget.

The county board appointed him to his present position as county auditor.

A graduate of Walsh institute of accounting, Brennan is married and the father of five children.

## Ten cool ways to cut it.



See the complete Ford line of lawn and garden tractors and riding mowers.

FOUR new lawn and garden tractors: 10 to 14-hp. New foot-controlled hydrostatic transmission on larger models. Quick-attach equipment mounting. Deep-padded, adjustable seat. Many attachments, including snow blowers and blades.

THREE lawn tractors: 7 and 8-hp. Deluxe models provide electric starter. Hydrostatic speed control standard on 8-hp. Equip any model with 34-in. rotary mower or 34-in. snow blower.

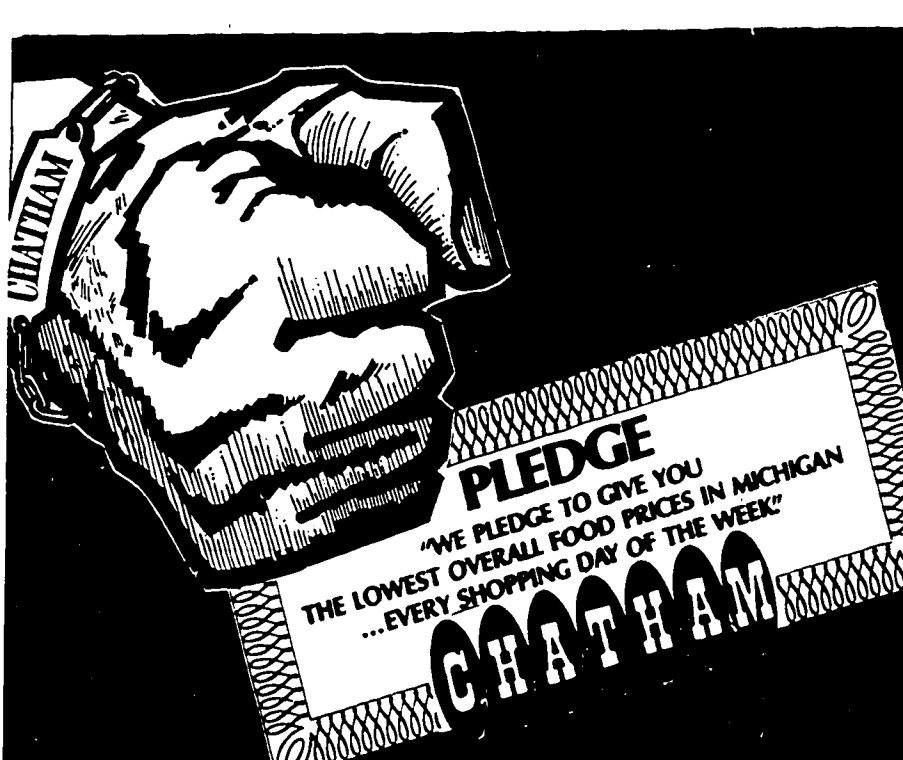
THREE riding mowers: 5 or 7-hp. Rear-mounted engine provides better traction, puts heat and noise behind you. Adjustable seat. Automotive-type precision steering. Stop in and see our line of Ford lawn and garden equipment today. All available with easy financing.

Mon. thru Fri. 8 to 5:30  
Saturday 8 to 4 p.m.

**BROQUET**  
FORD TRACTOR  
34500 W. 8 Mile  
Farmington  
476-3500

Travel Department," said Rehm.

He pointed out that recreation centers near



# WE'RE CHATHAM DETERMINED

complete food centers

TO BRING YOU THE LOWEST OVERALL PRICES IN TOWN.

**NO GIMMICKS NO GAMES NO LIMITS NO COUPONS NO LATE HOURS**

**CHUCK STEAK 66¢** (LB.)

**FRYER LEGS 44¢** (LB.)

**ICE CREAM 38¢** (HALF GALLON CARTON)

**JUNIOR BABY FOOD 12¢** (7-1/2 OZ. JAR)

**STRAINED BABY FOOD 7¢** (4-1/2 OZ. JAR)

**ABELS BAGELS 6 PK. 24¢**

**MANDARIN ORANGES 11-OZ. CAN 16¢**

**MIRACLE WHIP 1-QT. JAR 55¢**

**PURE SUGAR 5 LB. BAG 65¢**

**HILLS BROS COFFEE 3 LB. CAN 1.88**

**SWISS STEAK 98¢** (LB.)

**ALL MEAT HOT DOGS 298¢** (LB. PKG.)

**"IT'S THE TOTAL THAT SAVES YOU MORE"**

**SEEDLESS GRAPES 49¢** (LB.)

**JUMBO TOWELS 29¢** (100 FT. ROLL)

**AJAX CLEANSER 10¢** (14-OZ. CAN)

**PEPSI COLA 97¢** (76-OZ. 37L. PACK)

**425 N. CENTER/NORTHVILLE**

COPYRIGHT CHATHAM SUPERMARKETS, INC. 1972 PERISHABLES PRICES EFFECTIVE THRU JUNE 27TH, 1972 NONE SOLD TO DEALERS

# THE NOVI NEWS

SERVING THE CITY OF NOVI AND THE CITY OF WIXOM  
Vol. 18, No. 7, Two Sections, 28 Pages • Thursday, June 29, 1972—Novi, Michigan • 15c Per Copy, \$6 Per Year in Advance

## Council Abandons Taft Road Paving

Novi's road improvement program suffered a major setback Monday as the Novi city council abandoned existing plans to pave Taft Road between 10 Mile and Grand River.

The action to discontinue the project came after Councilmen Donald Young, Edwin Presnell, and Louie Campbell voted against adoption of the fifth in a series of seven resolutions necessary for establishing a special assessment district necessary to pay for the paving.

By failing to adopt the resolution the council in effect cut the purse strings of the project and blocked continuation of paving plans.

In spite of the action regarding the Taft Road, the council by a vote of 2-2 decided to continue with plans to pave Meadowbrook between Nine and Ten Mile Roads by adopting the fifth resolution setting up the special assessment district to pay for the paving project.

Young and Presnell both objected to the paving, but for different reasons. The bulk of the opposition was led

by Young, who, like residents, felt the \$14 per front foot assessment was too high.

"The road is good enough for the people who live there now," Young stated. "It's the assessment to \$9 and to \$7—figures he felt he could vote for—but on each occasion his amendment died for lack of a second vote."

Presnell's objections were based on an entirely different premise. "I'm not at all opposed to the \$14 assessment," said Presnell, who has voted against each of the first four resolutions. "My objection is to the use of the surplus Act 51 funds to pay for the paving."

(A portion of the expense was to come from Act 51 monies). The funds, which are Novi's rebate of gasoline taxes from the state, are given on the basis of the number of miles

Young went on to say he was not opposed to the paving per se, merely the amount of the assessment. He introduced amendments to the resolution changing the assessment to \$9 and to \$7—figures he felt he could vote for—but on each occasion his amendment died for lack of a second vote.

Presnell's objections were based on an entirely different premise. "I'm not at all opposed to the \$14 assessment," said Presnell, who has voted against each of the first four resolutions. "My objection is to the use of the surplus Act 51 funds to pay for the paving."

(A portion of the expense was to come from Act 51 monies). The funds, which are Novi's rebate of gasoline taxes from the state, are given on the basis of the number of miles

Young went on to say he was not opposed to the paving per se, merely the amount of the assessment. He introduced amendments to the resolution changing the assessment to \$9 and to \$7—figures he felt he could vote for—but on each occasion his amendment died for lack of a second vote.

Presnell's objections were based on an entirely different premise. "I'm not at all opposed to the \$14 assessment," said Presnell, who has voted against each of the first four resolutions. "My objection is to the use of the surplus Act 51 funds to pay for the paving."

(A portion of the expense was to come from Act 51 monies). The funds, which are Novi's rebate of gasoline taxes from the state, are given on the basis of the number of miles

Young went on to say he was not opposed to the paving per se, merely the amount of the assessment. He introduced amendments to the resolution changing the assessment to \$9 and to \$7—figures he felt he could vote for—but on each occasion his amendment died for lack of a second vote.

Presnell's objections were based on an entirely different premise. "I'm not at all opposed to the \$14 assessment," said Presnell, who has voted against each of the first four resolutions. "My objection is to the use of the surplus Act 51 funds to pay for the paving."

(A portion of the expense was to come from Act 51 monies). The funds, which are Novi's rebate of gasoline taxes from the state, are given on the basis of the number of miles

Young went on to say he was not opposed to the paving per se, merely the amount of the assessment. He introduced amendments to the resolution changing the assessment to \$9 and to \$7—figures he felt he could vote for—but on each occasion his amendment died for lack of a second vote.

Presnell's objections were based on an entirely different premise. "I'm not at all opposed to the \$14 assessment," said Presnell, who has voted against each of the first four resolutions. "My objection is to the use of the surplus Act 51 funds to pay for the paving."

(A portion of the expense was to come from Act 51 monies). The funds, which are Novi's rebate of gasoline taxes from the state, are given on the basis of the number of miles

Young went on to say he was not opposed to the paving per se, merely the amount of the assessment. He introduced amendments to the resolution changing the assessment to \$9 and to \$7—figures he felt he could vote for—but on each occasion his amendment died for lack of a second vote.

Presnell's objections were based on an entirely different premise. "I'm not at all opposed to the \$14 assessment," said Presnell, who has voted against each of the first four resolutions. "My objection is to the use of the surplus Act 51 funds to pay for the paving."



LOOKING AT NOVI - John Richter, 70 a life-long resident of Novi pauses while walking his dogs through the fields and woods he frequently visits—alone with only his thoughts and recollections of what Novi used to be. Blind for the past 23 years, he takes a look at the past in a two-part column by Jack Hoffman. See Top of The Deck on Page 10-A.

## For Reorganizing Board Sets Date

Election of officers from the board by the board will highlight the annual reorganizational meeting of the Novi Board of Education next week Thursday night.

The meeting is scheduled to get underway at 7 p.m. in the high school library.

Also on the agenda will be the opening of bids on the proposed new tennis courts at the high school. Planned are three fenced courts with bituminous paving surface.

Present officers of the board are Gilbert D. Henderson, president; Bruce Simmons, vice-president; Ray L. Warren, secretary; Mrs. Sharon L. Pelchat, treasurer. Other trustees are

Robert Wilkins and William Ziegler.

At least one change will occur. That concerns the position of Mrs. Pelchat, who lost her board seat in the election earlier this month.

Replacing her on the board and attending his first official meeting next week will be William Moak, who won election.

Generally, balloting for board officers has been by secret ballot.

Last year Henderson won the presidency by a 4-3 vote over DeWaard. By similar votes Simmons and Warren were elected. Mrs. Pelchat won the treasurer's post by unanimous vote.

There has been no indication of likely balloting. President Henderson concluded the last meeting of the fiscal year Monday with commendation of fellow members' performance and patience during the past year, and he, in turn, was the recipient of similar words from other members.

Besides the presence of Trustee-elect Moak at next week's meeting, the board table will include one other new face.

Newly appointed school superintendent, Dr. Gerald Kratz, will be attending his first official meeting as the district's chief executive. He replaces Superintendent Thomas Dale.

Defeat of the fifth resolution regarding the two sections of Taft Road brings and end to possibilities of establishing a special assessment district.

In regard to Meadowbrook Road, however, the council must still pass two more resolutions before paving can begin.

The first is to accept the assessor's roll and the second directs the assessor to spread the roll and the treasurer to collect the assessments.

Rejection of the paving of Taft Road came as a major disappointment to several city officials who feel it is imperative that Novi improve its roads if it is to achieve proper and orderly growth.

Defeat of the Taft Road paving was due to a legal technicality invoked by a high percentage of the property owners who were to be assessed for the improvement.

According to the city charter, if more than 50 percent of the number of homeowners to be assessed object in writing to the assessment, the improvement cannot be made unless the council overrides their objection by a five-sevenths vote.

Claiming that the proposed \$14 per front foot assessment was unduly high and inequitable, petitions signed by roughly 95 percent of the property owners on each of the two sections of Taft were submitted.

Basis of the objection was that the road had been

## By Road Committee Head Decision Criticized

Monday's defeat of the Taft Road paving project came as a particularly hard blow to Russell Stroud and the members of his Novi Road Improvement Committee.

It was the Road Committee which had started the ball rolling toward the much needed road improvement program.

Organized in the early summer of 1971, the committee presented its report and recommendations to the council last November. Those recommendations served as the starting point for the existing program.

The work of the committee did not end with the presentation of the report, however.

It was the Road Committee which pushed for the passage of the road millage in the May primary. Few worked harder on getting the millage passed than Stroud, the young, hard-working chairman of the group, who appeared at various organizational meetings throughout the city to explain the program and urge passage of the millage.

Contacted at work Tuesday following the council's decision to abandon the paving program as it related to Taft Road, Stroud was critical of the action.

Careful not to single out individual council members, Stroud said he felt the council had been "remiss" in discontinuing with the paving of Taft Road.

"In my own mind I feel that the community voted in favor of the road program when they voted in favor of the millage," he said. "In turning down the Taft Road paving I think the council listened to 27 or so people living along one road and rejected something the entire community had voted in favor of."

In addition to the council, Stroud also was critical of the council has not acted as directed by the community as a whole.

Stroud also said he felt the council should have stopped the hearings at a much earlier date if they had objections to the paving of Taft. "These are problems they should have worked out much earlier than this," he said.

"They shouldn't have allowed the public hearings to proceed this far before finally shooting it down."

In addition to the council, Stroud also was critical of the council has not acted as directed by the community as a whole.

Stroud also said he felt the council should have stopped the hearings at a much earlier date if they had objections to the paving of Taft. "These are problems they should have worked out much earlier than this," he said.

"They shouldn't have allowed the public hearings to proceed this far before finally shooting it down."

In addition to the council, Stroud also was critical of the council has not acted as directed by the community as a whole.

Stroud also said he felt the council should have stopped the hearings at a much earlier date if they had objections to the paving of Taft. "These are problems they should have worked out much earlier than this," he said.

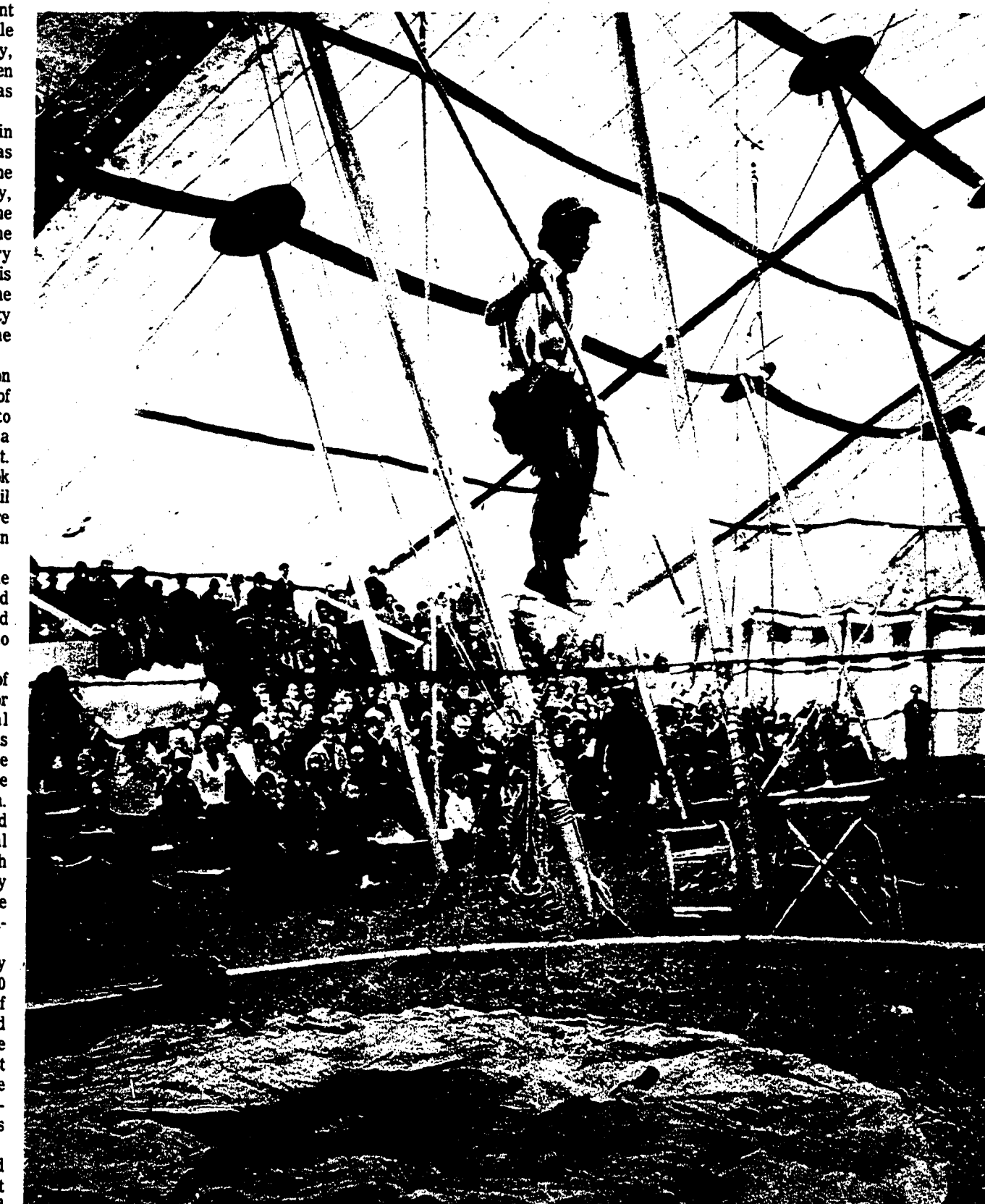
"They shouldn't have allowed the public hearings to proceed this far before finally shooting it down."

In addition to the council, Stroud also was critical of the council has not acted as directed by the community as a whole.

Stroud also said he felt the council should have stopped the hearings at a much earlier date if they had objections to the paving of Taft. "These are problems they should have worked out much earlier than this," he said.

"They shouldn't have allowed the public hearings to proceed this far before finally shooting it down."

In addition to the council, Stroud also was critical of the council has not acted as directed by the community as a whole.



TRAVELING CIRCUS SHOW—It was a day filled with both good old fashioned excitement and a twinge of nostalgia Saturday as Novi and Wixom residents saw the circus come to town. Billed as the last of America's traveling circuses, the Carson and Barnes Circus pitched its "Big Top" outside Wixom and put on two shows before packing up to move to another town. A complete recounting of circus day and additional pictures appear on pages 8-9A.