

35°

THURSDAY

April 30, 1987

Volume 32
Number 1Three Sections
46 Pages plus Supplements

© 1987 Ingersoll-Stephenson Publications. All Rights Reserved.

the NOVI NEWS

also serving Wixom and Walled Lake

Living LOCAL AREA FILLED
WITH HISTORICAL SITES/1C

Sports BOSTON MARATHON
CHALLENGED LOCAL MEN/20A

Opinions MILLAGE ISSUES
ARE SEPARATE MATTERS/18A

Station closing disputed

Kevin Gannon, 17, a Novi High School student, is not very happy with the Novi Police Department.

Specifically, Gannon is not very happy with the fact that the Novi police station closes at 5 p.m. every night.

Gannon found himself outside the station on Tuesday, April 21, at about 10 p.m. According to Gannon, a bottle was thrown at the windshield of his car as he was traveling past the driveway to the police station eastbound on Ten Mile.

He said he stopped immediately and approached a group of "three guys and three girls" who were parked in the driveway, and asked the driver of the other vehicle for some identification. According to Gannon, the driver of the other vehicle hit him three times in the chest and then drove off in "the direction of Walled Lake." Gannon said he was able to take down the license of the fleeing vehicle.

Gannon then went up to the police station to report the incident. He discovered the doors of the station were locked and used the outside phone to reach a patrolman on the inside. Gannon said he was surprised and shocked to learn the station is not kept open for emergencies.

"I thought a police station was where you go to take care of things like that," Gannon said.

He said he doesn't think many Novi residents are aware of the police station hours. Gannon said when he asked an officer why the station was kept locked at night, he was told "it was the city council's fault... that they won't let them open it."

Captain Richard Faulkner of the Novi Police Department said the building is open Monday through Friday from 8 a.m. to 5 p.m. and the hours have been based on the perceived needs of the community.

Faulkner noted the building was finished in April of 1980 and the building was open then until 8 or 9 p.m. The department kept a log of requests for service in the building and the reasons citizens were coming in.

Continued on 19



Novi News/CHRIS BOYD

Nature's wonders

Everyone knows that development is booming in Novi. But amidst all the steel and concrete there are still many natural wonders. Anna Schmidt, the daughter of Larry and Margaret Schmidt, closely examines one of those wonders, a bloodroot blooming in the woods behind Novi Woods

Elementary School. Anna is a member of the Novi Adventurers 4-H Club which has been working to clean-up the woods and create nature trails so other Novi residents also can enjoy nature's wonders.

Emergency response plan fails

Should Novi have a first-responder program for medical, "life-threatening" emergencies?

Citing inadequate information, the Novi City Council voted 4-3 to answer the question with a "no" for the immediate future.

John Chambers, chairman of the Police/Fire Needs Committee, presented a proposal to implement immediately a program in which fire, police and ambulance units would be dispatched simultaneously to emergency situations at the April 27 council meeting.

Chambers told council the committee had been studying the program and had reached the conclusion it should begin "as soon as possible" and should not wait for the committee to finish its final recommendations concerning the entire police and fire staffing levels and programs.

"The committee, after reviewing the program, believes that we have a strong moral obligation to institute such a basic 'life-saving' program for the community at large," Chambers said.

He noted that the committee had voted

unanimously to bring the recommendation to the council for immediate action.

The committee interviewed three emergency medical experts in researching the first-responder program. According to Chambers, Novi is one of the only communities in the area not to have the program already in use.

"The proper training will allow a police officer, fire officer and private emergency medical services (EMS) personnel and vehicles to respond to a 'life-threatening situation' simultaneously," Chambers told the council.

The purpose of the combined response is to allow the personnel with the highest level of medical training to supervise the care until the ambulance crew arrives and can begin transporting the victim, Chambers said.

Currently in Novi, a private ambulance and a police officer are dispatched to the scene of an emergency. Fire Chief Arthur Lenaghan noted that fire department personnel have been trained in CPR and advanced life saving techniques. In

addition, 14 fire fighters have been trained as emergency medical technicians (EMT).

Chambers told the council the city is currently not utilizing to the full degree those fire officers who are trained EMTs. He noted that Novi dispatchers currently handle the first-responder programs for other communities in the regional dispatch area, and so are familiar with the program. Chambers said both the police and the fire chief have previously contemplated initiating such a program.

The cost of the program, according to Chambers, would be a small amount from the contingency fund for the remainder of this fiscal year, and \$20,000 from next year's contingency budget.

"The committee believes that such a program is highly beneficial, cost-effective, and will effectively and efficiently use our trained personnel," Chambers said.

Continued on 9

Council adds police officers to city's roster

By ANN E. WILLIS
staff writer

The Novi City Council has decided to add 2½ police officers and a fire marshal to the payroll during the 1987-88 fiscal year.

Council members voted unanimously at the April 22 budget meeting to allow the administration to begin the hiring process for three officers, two to begin this July, and one to begin in January. The half-officer position is a full-time patrol position that begins half-way through the budget year.

A public hearing on the entire budget will be held Monday, May 4, with the council voting on formal adoption of the proposal during the May 11 council meeting.

Following a directive from the council, City Finance Director Les Gibson and City Manager Edward Kriewall presented the council with an alternative budget plan which included cuts in several departments and a breakdown of how the saved money could be translated into police and fire officers for the city.

Salaries for the three officers will come to \$66,903; the cost of equipment is \$7,500. The total cost of the three additional officers is \$74,403.

Several council members expressed surprise at the relatively low cost for additional personnel. "Two-and-a-half for \$66,900? They always told us \$45,000 each," commented Council Member Martha Hoyer.

Assistant City Manager Craig Klaver explained the low cost was just for the first year the new officers were on board. Salaries for first-year patrol officers with benefits run about \$25,000, he said. "After three years that figure will grow substantially," Klaver noted.

The fire marshal position has a cost of \$39,458 in salary and benefits and a \$2,500 equipment cost for a total of \$41,958.

Council Member Joseph Toth suggested the half-year police officer would be put to better use if hired in December rather than January, so the officer would be available for road patrol during the Christmas season.

Klaver noted that all three will be hired at the same time, but that current scheduling made the addition of two officers in July a workable situation, but the third officer presented some problems.

Klaver noted the Police and Fire Needs Committee was expected to present a report the first part of July and that negotiations between the city and the Police Officers Union were beginning in May. According to Klaver, both of those situations

Kriewall: 'Adding four Fire Protection Officers, 2½ police officers and a fire marshal in six months is a significant increase.'

would affect how a new schedule was determined and where to best utilize the third position.

Council Member Nancy Covert said she would still be interested in adding four police officer positions, two in July and two in January. Covert suggested cutting 1½ percent out of every department to pay for the increase.

Klaver noted that in three years the personnel costs would see a very large increase. "We don't want to get into a position of hiring and not be able to afford them a few years down the line," Mayor Patricia Karevich agreed.

Kriewall told Covert the 1½ percent cut would include the police department which he said seemed to be defeating the purpose of the additions. "Adding four Fire Protection Officers, 2½ police officers and a fire marshal in six months is a significant increase," Kriewall said.

"I'd rather adopt the approach such as this, hiring 2½ now, then if the money and funds are there in six months we can re-examine it," Toth said. "With the report coming in, if we put everybody on now, we lose our flexibility. I think we're taking a good step, but I don't want to take a big leap."

The new officers will be used for road patrol, according to Klaver, because "that's the immediate need."

Kriewall and Gibson presented an itemized listing of the cuts in individual department budgets that council members had previously suggested. The Environmental Committee budget was cut \$11,500 to \$12,000 total. The Planning Commission budget was decreased \$60,450 to a total budget of \$200,000.

inside

BUSINESS CLASSIFIEDS	1B
EDITORIALS	5B
ENTERTAINMENT	18A
LETTERS	6C
LIVING	19A
NOVI BRIEFS	1C
NOVI CHAMBER	4A
NOVI HIGHLIGHTS	10A
OBITUARIES	2C
PEOPLE	10A
	4C
EDITORIAL	349-1700
ADVERTISING	349-1700
CLASSIFIEDS	348-3024
DELIVERY	349-3627

For Summer Fun Boats — Campers Over 80 Listings

Classifications 210 & 215
In The

GREEN SHEET

Action Ads
Get Results
348-3022

City mourns loss of local historian

The steel structures, expansive retail centers and industrial developments now gracing Novi's landscape never eluded Larry Maki.

While planners and developers were looking ahead to the 21st century, Maki was searching for Novi's roots.

A history buff with a penchant for windmills and lighthouses, Maki died April 22 at his home in Old Dutch Farms. He was 43.

Considered a bulwark behind the Novi Historical Society's efforts to preserve the community's remaining historical structures, Maki's death came only one day after workers placed the old Town Hall

on its new basement foundation southwest of Novi Public Library.

The building was moved to the site last August and will house an historical museum.

"He did know it (the Town Hall) was moved," said Charmaine Gladden, a friend of Maki's and an active member of the Novi Historical Society. "He was just too tired to come and see it."

Gladden said Maki had not been feeling well for several weeks and left work early April 21 from Guardian Industries, where he was a trainer in the printing and bagging

Continued on 9



Novi News/CHRIS BOYD

Is that Darth Vader peering out behind that mask? Nope, it's just Ken Winters, a Novi resident who is beginning to make a name for himself in competitive racing circles. For more information on Winters' racing career see the story on Page 25A.

Libraries control own contents

Librarians should be prepared to be on the sidelines of legal action. In the reading materials they select for their patrons, they are certain to be a professor of translation.

Schauer: 'Well, I'm sorry to tell you at that point you don't have very much legal protection . . . are you going to sue the city council that cuts the library budget?'

That's going to require some considerable degree of courage and some considerable degree of resistance," said University of Michigan professor Frederick Schauer, who served on the U.S. Supreme Court's majority opinion in 1986.

Marshall's political activities," he added.

Pressure to ban some books and add some that aren't on the shelves isn't going to come through the legal system," he said. Since a U.S. Supreme Court ruling in 1957, "only absolutely unadorned, hardcore pornography can be restricted."

He cited a case brought against the film "Fanny Hill." The court said "don't be ridiculous, this isn't even close," Schauer said.

He advised librarians as "professionally trained book selectors" who must make choices to do it with the general community in mind. Some of the complaints about the choices are correct, he maintained.

Aspirin linked to Reyes Syndrome

The National Reyes Syndrome Foundation has announced that a new multi-center study provides firm evidence of the link between the development of Reyes Syndrome, a serious and often fatal disease that has been associated with the flu, chicken pox or an upper respiratory illness, and the use of aspirin for treating such illness.

contagious and is often misdiagnosed as encephalitis, diabetes, poison, drug overdose or sudden infant death.

In the study, data from 70 pediatric care centers and the Center of Disease Control in Atlanta compared histories of 27 cases of Reyes Syndrome with those of 140 controls from January 1985 through May 1986. Controls were matched for age, race, type and timing of onset of illness. Twenty-six of the 27 cases of Reyes Syndrome occurred in children who had taken salicylates, the study reported.

"Parents of young people who take their own medications should be extremely aware and cautious of the evidence of this study and speak to their children, who are self-medicating, warning them of the risk of taking aspirin," he added.

"Although this study is of great significance, it is not a cure — but a great step forward in the understanding of the many medical mysteries of this swift and deadly disease. It also confirms the impending need to continue to alert and educate the public and medical community of the potential dangers of Reyes Syndrome," said Price.

Nearby

SHOWTIME COMPANY, a popular musical revue from Ficks College in Idaho, will perform at Novi High School's Fuerst Auditorium on Saturday, May 2, at 7:30 p.m. Tickets will be available at the door at prices of \$6 for adults and \$2 for children under 12.

"AN EVENING WITH JOE CLARK, H.B.S.S." will be presented at the Orchard Ridge Campus of Oakland Community College this Saturday, May 2, at 7 p.m. The Orchard Ridge campus is located on Orchard Lake Road at I-96 in Farmington Hills.

"A CHORALAIRES HOME COMPANION" is the title of the annual spring concert presented by the Novi Choralaires on Mother's Day Weekend. The concert will be held in Novi High School's Fuerst Auditorium on Saturday, May 9, at 7:30 p.m.

TRUMPETIST RAMON PARCELLS will be guest artist when the Plymouth Symphony Pops presents "A Tribute to Arthur Fiedler" on Sunday, May 3, at 3 p.m. in the Plymouth Salem High School auditorium.

THE FARMINGTON PLAYERS will present the Neil Simon comedy, "The Good Doctor," at the Players' Barn Theatre through May 17.

THE ROCHES will appear in concert at the Power Center in Ann Arbor on Tuesday, May 5, at 7:30 p.m.

"The Good Doctor" was Simon's 13th Broadway show. Each member of the cast plays multiple characters in the play which consists of 11 different vignettes.

THE ROCHES will appear in concert at the Power Center in Ann Arbor on Tuesday, May 5, at 7:30 p.m.

Group cites planning changes

By CHRISTOPHER J. KOZLOWSKI staff writer

New construction projects in the City of Novi may soon begin quicker and cost less money because of recent findings by the city's Site Plan Process and Fee Review Committee.

According to City Council Member Martha Hoyer, who chairs the committee, the group is considering a recommendation that would lower preliminary review plan requirements to ease the financial burden on developers.

According to the current process, developers are required to have almost all engineering specifications completed along with all architectural plans — requirements which Hoyer said may be excessive at the preliminary level.

Hoyer admitted that Novi's preliminary requirements are greater than those of many neighboring communities, which she said usually consist of concept, zoning and initial structure approval.



Novi News/CHRIS BOYD

The right tool

No job's impossible . . . as long as you have the right tool. And Troy Norwood had the right tool — a paint brush with a fairly long handle — when he painted the trim on a building on Grand River Avenue recently.

costly — and then they are turned down on preliminary," Hoyer said.

"Being turned down on preliminary is not bad in other communities because you have not expended those dollars," she said. "But in Novi you have faced quite an expense. To be turned down is wasted money."

Hoyer said by the time a developer appears before the planning commission under the current process, he is required to have completed virtually all the engineering and infrastructure for the proposed development.

"What we are finding is other communities just say, 'Show us where your sewer access point is,' and then, 'We need to see your sewer design at final site plan,'" Hoyer said.

"What we are finding is that developers are expending a great deal of money for the total engineering and the total architectural — which gets rather

and that current policies more than likely evolved to be that way," Hoyer said.

Hoyer said when she was a member of the planning commission 14 years ago, the commission did not require engineering plans be submitted for preliminary approval.

"And then over the years it has evolved to a requirement through questions that the planning commission has put forth as they were reviewing a site plan," she said.

"Now we are beginning to wonder if we are requiring too much too soon," she added. "I am not saying we are reducing any of our standards. It has nothing to do with standards of the ordinances."

"The problem with the current preliminary site plan requirements is that they require certain costs and information be provided, which most developers think belong in a final approval as opposed to a preliminary approval," said Horowitz.

"Most developers would like the preliminary approval to be a confirmation by the city that the use is acceptable, that the landscaped

Rates require too much too soon?

By CHRISTOPHER J. KOZLOWSKI staff writer

Developers spearheading new construction projects in Novi can expect to pay hundreds of dollars in planning fees under the city's current site planning and review process, a process which is currently being reconsidered by the Site Plan Process and Fee Review Committee.

According to the city's current Site Plan Manual, new development is divided into a two-stage process: an engineering site plan review and a planning site plan review. Developers working on a new project currently may face specific fees in each stage, depending upon the size and type of development.

horse arenas, riding tracks, exercise areas, parking lots, horse van storage areas, etc.) The preliminary fee is \$100 (if the development exceeds no more than two acres) or \$150 plus \$30 per acre (if the development exceeds two acres).

In addition to all of the fees listed above, developers must pay an additional 15 percent of all costs to cover City of Novi administrative costs.

According to the current Site Plan Manual, final site plan reviews (or reviews of revised plans) would cost developers one-half the cost of their preliminary site plan review fees. For example, if a developer was proposing construction of a one-acre office complex, the developer would pay a \$200 fee, plus \$30 in administrative costs. If the plan was approved and submitted for final site plan approval, the developer would pay an additional \$115. If the final plan was rejected, the developer would next pay another \$115 when submitting a revised plan.

Elegance

Arrives May 7, 1987

STAR OF DETROIT

Discover the truly unique experience of cruise dining.

Discover 165 of nautical elegance while dining, dancing and viewing the beautiful Detroit and Windsor skylines.

Whether you're celebrating a marriage, entertaining for business or on a personal excursion for two, discover the variety of daily cruises departing from Hart Plaza.

Discover the arrival of elegance . . . discover the Star!

★ For Information & Reservations ★

(313) 465-7827

OPEN 7 DAYS A WEEK

Cruising through October . . . Gift certificates available

TEACHERS WANTED

In the next several years Michigan will be up against a major problem...a teacher shortage...and when a shortage occurs, quality can suffer. What's being done to make sure your children will get the quality of education they deserve? Join Debra Silberstein for a special report.

Next Thursday 5pm

NEWS 4

It's what people around here watch.

Get hooked on fishing

MICHIGAN FREE FISHING DAYS

June 6 and 7, 1987

DICK MORRIS — BEST DEALS — LOWEST PRICES —

Dick Morris At Your Service!

No One Knows Your GM Car Better

CHEVROLET'S GREAT AMERICAN KEY HUNT

Oakland County's Official Headquarters

COME IN TO DICK MORRIS CHEVROLET TO SEE IF YOU'VE WON AN EXCITING ALL NEW '88 CHEVROLET CORSICA, BERETTA OR FULL SIZE PICK-UP!

ALL NEW 1988 CORSICA

4 dr. sedan, air, 5 spd, manual, fuel inject., AM/FM stereo, rear window def., tinted glass, console, sport wheel covers, reclining cloth bucket seats, all season steel belted radials, Stk. No. 6309

SALE PRICE \$9915

3.9% APR Or Up To \$1,000 Cash Back

GMAC Financing

ON SELECTED MODELS

TEST DRIVE THE ALL NEW LEANER, MEANER, '88 CHEVROLET PICK-UP

1988 1/2 TON PICK-UP

Auto, trans., AM/FM stereo, gauges, headliner, 5.0 liter V-8, step bumper, p.s., p.t., P225/75R15, 5.0 season steel belted tires, quicksilver, Stk. No. 2186

SALE PRICE \$10,849

MANY MORE AVAILABLE!

1988 BERETTA

Air, 5 spd, trans., AM/FM stereo, styled steel wheels, reclining cloth buckets, rear def., carpeted floor mat, bright red, Stk. No. 6326

SALE PRICE \$10,680

DICK MORRIS CHEVROLET

All Prices Plus Tax, Title & License

"Your Favorite Chevrolet Dealer"

2199 Haggerty Rd., Walled Lake

624-4500

DICK MORRIS — BEST DEALS — LOWEST PRICES —

BEST DEALS

BEST DEALS

DICK MORRIS

DICK MORRIS

LOWEST PRICES

LOWEST PRICES

DICK MORRIS

DICK MORRIS

Same Day Service — Most Repairs —

NO APPOINTMENT NECESSARY!

Fully Equipped Body And Frame Shop

- Complete Body Repair and Painting for all G.M. Cars
- FREE ESTIMATES
- Expert Craftsmanship

We Feature Complete Service For

- Chevrolet
- Oldsmobile
- Buick
- Cadillac
- GMC Trucks
- Pontiac

No one knows your GM car better than Mr. Goodwrench

GM QUALITY SERVICE PARTS

Mon & Thurs. 7-9

Tues, Wed, Fri. 7-6

District begins rollback attack

By MICHELE M. FECHT
staff writer

NORTHVILLE — Northville voters will be asked to reaffirm the school district's operating millage approved last year by overriding the Headlee Amendment following the board of education's approval Monday to place the issue on the June 8 ballot.

For the first time since passage of the Headlee Amendment in 1976, the school district will ask voters to override the tax rollback.

The Headlee Amendment limits increases for existing (not new) property in a school district to the level of the Consumer Price Index.

Though final figures on State Equalized Valuation assessments will not be known until the county's tax allocation hearing next Monday, School Superintendent George Bell said the administration's guess at this time is that the district's total SEV (both new and existing property combined) will increase about 11.8 percent.

Due primarily to lower oil prices, this year's CPI is 1.9 percent, the lowest in 22 years.

"I don't want to give the community the impression that the school district will be in a deficit position if the Headlee override is not approved," Bell told the board. However, he noted that an override of the Headlee Amendment will provide the district with approximately \$411,000 to take care of needs over and above the normal operating costs.

Noting that the Headlee Amendment "limits the ability of increased property assessments," Bell said that when the school district asks voters last June to approve a 38.4 mill operating levy for five years, it do so on the premise that there would be continued growth in the area.

Noting that the CPI has been anywhere from 5-12 percent in previous years, Bell said this year's low inflation rate has forced many school districts to go to voters to override the Headlee rollback.

The superintendent said approval of the Headlee override will not result in additional millage levied on property. The 38.4 mills approved last year still will be maintained.

"The Headlee override is a one shot deal," Bell said. "The \$411,000 in revenue will allow us to do the kinds of things the district has needed to do since I've been here but has never been able to do."

The superintendent noted that the district has an estimated \$1.3-\$1.5 million in additional costs (over and above normal operating costs) over the next five years.

He said there are many projects that the district simply cannot pay



Novi News/SCOTT BEBOU



On a beautiful springtime Sunday, 325 runners turned out to join the "Novi Run", one of the most popular events of the Parks and Recreation calendar. This year's event was co-sponsored by JCK & Associates, the city consulting engineers, and the Parks and Recreation department. Above left, the runners spread out along the course, which was marshalled by the Novi Trackers Running Club. The police department and the citizen group REACT, helped with traffic control. Left, the winner of the 10K Men's division race was Matt Simpson of Walled Lake with a time of 32:50. A 5K race and a one-mile fun-walk were also heavily attended. Kelley Simpson of the Parks and Recreation department said "We're really pleased with the race. It's one of the major events we do - promoting good health and physical fitness."

USED TIRES
\$10.00 And Up
V.I.P.
Tire & Auto
48705 Grand River
Novi 348-5858

BE ASSURED
You can guarantee any future funeral expenses are covered at today's prices. Ask about our regulated "Trust 100's Funeral Pre-Arrangement Plan." This, and other valuable information is in our helpful booklet "Pre-Arrangement Makes Sense."

Trust 100
FREE
NO COST OR OBLIGATION
USEFUL MONEY-SAVING FACTS!

HARRY J. WILL
FUNERAL HOMES, INC.
31 LOCATIONS - ALL NEAR FREEWAYS
Rochester - 25470 Plymouth Rd
Livonia - 37000 Six Mile Rd 937-3670
Dearborn - 4412 Livernois Ave

(Phone us or mail in this coupon)
Yes, I'm interested in more details on pre-planning. Please send me your booklet "Pre-Arrangement Makes Sense."
Name _____
Address _____
City _____ State _____
Zip _____ Phone _____

The Lace Curtain Shop
TIME TO FRESHEN UP FOR SPRING!
Lots of New Stock
We Now Carry Oval Tablecloths
• By The Yard • No Sewing • Tablecloths
• With Rod Pocket • Machine Wash & Dry • Dollies
• Ready to Hang • Wallhangings • Bedspreads

The Lace Curtain Shop
BRITISH MADE LACE CURTAINS
33216 Grand River (1 blk. East of Farmington Rd.)
Farmington • Mon.-Sat. 10-6 **471-2058**

OUR LADY OF VICTORY SCHOOL
NORTHVILLE

NOW Accepting Registration
For NEW Students

Announcing Kindergarten In The Fall, 1987
Serving Students: K-8

SUPERIOR RELIGIOUS AND ACADEMIC INSTRUCTION
RECOGNIZED IN ACADEMIC COMPETITIONS FOR EXCELLENCE
ENRICHMENT, REMEDIATION AND FOREIGN LANGUAGE OFFERED.
CURRICULUM DESIGNED TO MEET YOUR CHILD'S INDIVIDUAL NEEDS.

A SOUND INVESTMENT IN YOUR CHILD'S FUTURE TODAY, WILL YIELD LASTING DIVIDENDS FOR TOMMORROW.

For More Info. Call: **349-3610**

133 Orchard Dr. NORTHVILLE

M-CARE Health Center

Feeling as rusty as your bicycle?

Join our Spring Warm-Up Bike Rides! Wednesday Evenings April 29; May 6, 13, 20 and 27

Let us help you get in shape for summer with our spring warm-up rides. Sponsored by the M-CARE Health Center at Northville, each evening's ride will begin at 6:30 p.m. from 650 Griswold, Northville, and proceed along Hines Drive.

Two groups will go each evening, one for veteran riders and another for those just getting back into bicycling. Please wear a helmet and furnish your own bicycle.

Refreshments will be served at the finish of the rides, at the M-CARE Health Center. The rides are open to everyone, free of charge. Bring the whole family and enjoy a relaxing evening. If you have questions, call the M-CARE Health Center at 344-1777.

AIDS education program studied at high school

By BARBARA ZIEMBA
special writer

As the crisis surrounding the deadly disease AIDS continues to grow, controversy of how to educate the public to the dangers it presents is also heating up.

Novi residents had an opportunity to learn more about AIDS and air their views regarding AIDS education and the Novi school system's recently revised communicable disease policy the evening of March 24.

In his preliminary remarks before an audience of approximately 75 parents, students and faculty members, Novi High School Principal Dr. Robert Youngberg outlined the purpose of the meeting. "What we're trying to find out is how much information you or your students want to know about AIDS and what you think belongs in a school program because there are some aspects of AIDS education that involve some sensitive learning materials."

The audience then viewed a 17-minute filmstrip about the disease which presented general background information regarding definitions, statistics, detection and courses of treatment.

At the filmstrip's conclusion, Youngberg introduced two physicians on the staff of St. Mary Hospital in Livonia — Dr. William Siebert, an orthopedic surgeon, and Dr. Dariusz Kiani of the infectious disease and family practice unit.

The Novi Board of Education's communicable disease policy underwent some language revisions in March to include less common, but more serious, infectious diseases, such as AIDS, ARC (AIDS-related Complex) and Hepatitis B.

Briefly, the policy empowers the superintendent to convene a panel to review and hand down a decision on any case involving high-risk diseases. The policy also provides the affected individual the right to appeal if they disagree with the panel's decision. Confidentiality (to the extent provided by law) is required by all persons involved with any procedures, unless this right is waived in writing.

Because of the manner in which AIDS is contracted — through shared use of intravenous needles, exposure of an open sore to infected body fluids, but primarily through sexual intercourse — the question of AIDS education is touching on sensitive issues.

The topic of homosexuality is also controversial. Homosexuals are one of the biggest high-risk groups for contracting the disease, and the toll AIDS has inflicted on them is rising since the disease first came to the public's attention.

Currently, formal classroom instruction regarding AIDS is not incorporated into lesson plans at Novi High School. Questions about the disease have been asked, however, and three classes encompass the school's sex education curriculum: Life Science, a mandatory

course for freshmen; You and Your Life; and Child Development and Family Relations, which are elective courses.

Youngberg observed, "If the students have questions on it (AIDS), we answer those questions. But the subject gets more and more complicated the more information we discover. We want your opinions regarding how far we should go educating our students and your children."

Teaching students about AIDS without seeming to condone sexual activity yet not force value judgments on them was a source of concern to parents, students and the administration.

If abstinence from "casual" sex is not followed, health officials are generally advocating condoms as a method of protection from AIDS. However, schools are prohibited from teaching birth control to young people, and teachers could not recommend use of a condom as a precaution against AIDS to a sexually active student.

Some educational institutions at the college level, such as Central Michigan University in Mt. Pleasant, have taken to distributing free condoms to their students in an effort to spread the word about AIDS and emphasize the importance of "safe sex."

Neither Drs. Siebert or Kiani endorsed such actions. "In my opinion, that's something that should shouldn't be done, because it promotes something (casual sexual activity) that we don't want to promote," said Kiani. "As a doctor, however, if there is no way sexual abstinence will be followed, that is the only chance that we have of containing the disease."

Siebert pointed out that condoms have not proven to be 100 percent effective as a birth control device, and they are also not foolproof protection from contracting or spreading the AIDS antibody.

Some members of the audience proposed that the schools should only teach the medical aspects of AIDS and refrain from any discussion on human sexuality. They proposed students should view the same filmstrip they saw (or a similar one) and have a health professional present to answer questions. Any discussion involving values or morals should be left up to parents.

At the conclusion of the meeting, an impromptu list was circulated among the audience to form a committee to study the issue and draw up proposals to be presented to the Novi Board of Education. The committee, consisting of Novi High School faculty members, students and parents will, according to an informational handout, "determine the place of AIDS information in the high school curriculum."

Another meeting was held April 7 at Novi High School, at which time the ad hoc committee proposed a two-session workshop be held for all students of Novi High School beginning next term. The committee further requested a nurse be present during the workshop. These proposals will be submitted to the Board of Education sometime in May, according to Youngberg.

Livonia sponsors park nature walk

LIVONIA — The 10th annual Wildflower Walk will be held along the nature trails of the Livonia Bicentennial Park through May 23.

Sponsored by the Schoolcraft College Biology Department, the event is open to the public free of charge.

The half-mile tours last 45 minutes and are conducted by faculty members and people who have completed a wildflower class at Schoolcraft College.

Groups and individuals may arrange for a guided wildflower tour by calling Professor Roger Sutherland of the Schoolcraft College Biology Department at 591-6400, extension 521.

"When you pay \$30,000 a month in property taxes

you should be concerned about quality education."

M-CARE Health Center IN NORTHVILLE

The Northville M-CARE Health Center is now open, bringing to your doorstep the medical expertise and state-of-the-art diagnostic and treatment technology of the University of Michigan Medical Center.

The Center provides a full range of health care services, including:

- Internal Medicine • Obstetrics and Gynecology • Pediatrics • Radiology • Laboratory facilities on Site • Educational Programs in Health Maintenance

And, yes, we are open to the public. You do not need to be an M-CARE member to use our facilities.

So, call us today to make an appointment for your free Blood Pressure Screening, or call us the next time you need health care!

M-CARE Health Center
In Northville
650 Griswold
near Main Street
Northville, MI 48167
344-1777

Free Blood Pressure Screening
May 4 - May 15
Call for an appointment!
M-CARE is a University of Michigan corporation

\$1,000 a day! \$30,000 a month! \$360,000 a year in property taxes!

We at Alexander Hamilton Life believe we're paying our fair share in property taxes on our Corporate Headquarters located in Farmington Hills. (And they just raised our assessed value!)

Paying for the education of our children from Kindergarten to 12th Grade (K-12) is a basic obligation of homeowners as well as business property owners. It is the best opportunity we have to invest in their futures.

We have only two major ways to finance local school districts — state aid to education through state income and sales taxes, and lottery revenues controlled by the legislature in Lansing, and local property taxes on homeowners and businesses.

Twenty years ago when Alexander Hamilton Life's Home Office Building was constructed, the State government's share of financial support for local schools was 49%. Local property taxpayers financed most of the other 51%.

When the citizens of Michigan adopted the Tax Limitation Amendment in 1976, the State's obligation to finance education was locked in at a minimum of 45%, but elected state officials have not lived up to their end of the bargain and have cut State support of education to 37%, unconstitutionally denying our schools some \$350 million annually.

In fact, some 25% of our children live in school districts that receive no State aid at all. That is just not fair.

Five times in the past we have raised State taxes to aid our schools:

- ... in 1960 when legislators asked for a Sales tax increase,
- ... in 1967 when legislators implemented the income tax,
- ... in 1971 when legislators increased the income tax,
- ... in 1972 when legislators initiated the State Lottery, and
- ... in 1975 when legislators implemented another income tax increase.

Home Office — Alexander Hamilton Life on 1486 in Farmington Hills, Michigan

Richard H. Headley, President, CEO

Alexander Hamilton Life
INSURANCE COMPANY OF AMERICA
A Household International Company
3205 HAMILTON BLVD. # FARMINGTON HILLS, MI 48188 • (313) 553-2200

We Care About Michigan

THE WORLD'S BEST TOOL FOR MOWING THE LAWN.

It's a Honda lawn mower. And it's the world's best for a lot of very good reasons. Like our Overhead Valve engine for easier starts and smoother running. Our Roto-Stop® system that stops the blade without stopping the engine. And our exclusive shaft drive with reliability that far exceeds belt drive.

We back every Honda lawn mower we sell with full service. To make sure your Honda lawn mower is the world's best tool for mowing the lawn for a long time to come.

HONDA Power Equipment
IT'S A HONDA

MODEL HR1945XA

For optimum performance and safety we recommend you read the owner's manual before operating your Honda Power Equipment. © 1986 American Honda Motor Co., Inc.

SAXTONS
GARDEN CENTER INCORPORATED
587 W. ANA ARBOR TRAIL • PLYMOUTH
Serving You Since 1928 • 453-8250

We Care About Michigan

Fraser calls for business to take risks

Businesses must learn to take risks... Fraser called for businesses to take risks...

Throughout his speech, Fraser criticized the Reagan administration for allowing the national debt to spiral out of control...

At the time, we had an administration that was sympathetic to the problems and understood the magnitude of Chrysler going bankrupt...



Deanna Mitchell (left) of Farmington Hills was the lucky winner of a five-foot cuddly bunny given away by Genitti's restaurant in downtown Northville...

Milford shoppe offers a treat for the senses

Continued from 1 Putnam's enthusiasm has sparked an interest in the minds of many of her friends and co-workers...

Consumers offers tips when trimming limbs

Now that spring is officially here, many southeastern Michigan residents who have cabins or cottages in northern Michigan will begin the annual task of preparing their hideaways to enjoy the warm, summer months just ahead...

At the time, we had an administration that was sympathetic to the problems and understood the magnitude of Chrysler going bankrupt...

To Place Your Action Ad One Local Call Does It All... Monday Green Sheet Wednesday Green Sheet Wednesday Green Sheet Plus Pinckney, Hartland, & Fowlerville Shoppers

Deadlines Monday Green Sheet... Wednesday Green Sheet Plus... Wednesday Green Sheet... Buyer's Directory

RATES WEDNESDAY GREEN SHEET PLUS 3 ACTION ADS 10 Words for \$5.99

Classified Display Contract Rates Available Want ads may be placed until 3:30 p.m. Friday...

absolutely FREE 001 Absolutely Free 001 Absolutely Free

Sliger/Livingston Publications GREEN SHEET EAST CLASSIFIED ACTION ADS

010 Special Notices 010 Special Notices 010 Special Notices 015 Lost

Volunteers MALE PATTERN BALDNESS Dept. of Dermatology Research University of Michigan

James C. Cutler REALTY 103-105 Rayson, Northville 349-4030

Volunteers FEMALE PATTERN BALDNESS Dept. of Dermatology Research University of Michigan

BRIGHTON 103-105 Rayson, Northville 349-4030

Adler HOMES INC. OFFICE (313) 229-5722 MODEL (313) 229-6559

SEA CRAB RESTAURANT At Faulkner Shores Golf Club NOW OPEN FOR THE SEASON!

Spring Clearance Sale Unbeatable Prices only at Donald E. McNabb Co. Carpet Milliken Area Rugs

HOME OF THE TWO-WAY GUARANTEE LOWEST PRICES HIGH MILEAGE Metro25 car care centers

001 Absolutely Free 001 Absolutely Free 001 Absolutely Free

001 Absolutely Free 001 Absolutely Free 001 Absolutely Free

001 Absolutely Free 001 Absolutely Free 001 Absolutely Free

J.R. Hayner REAL ESTATE 227-5400

Sand Point Estates of Brighton starting at \$81,000

MODEL HOMES OPEN DAILY NOON-6PM

Adler HOMES INC. OFFICE (313) 229-5722 MODEL (313) 229-6559

We All Know Money Doesn't Grow On Trees... Merrill Lynch Realty

2 DAY ANTIQUE AUCTION
 Saturday, May 2, 10 A.M. to 3:30 P.M.
 Sunday, May 3, 10 A.M. to 3:30 P.M.
 Roger Anderson (313) 229-9027

FISHING TACKLE AUCTION
 Thursday, May 7, 7 P.M.
 FOWLERVILLE MASONIC HALL
 Roger Anderson (313) 229-9027

WHAT IS THE BARGAIN BARREL
 Public Auction Sunday May 31
 JERRY DUNCAN'S AUCTIONEERING SERVICE
 437-9175 or 437-9104

Garage & Rummage Sales
 103 Garage & Rummage Sales
 104 Garage & Rummage Sales
 105 Garage & Rummage Sales

Garage & Rummage Sales
 106 Garage & Rummage Sales
 107 Garage & Rummage Sales
 108 Garage & Rummage Sales

Garage & Rummage Sales
 109 Garage & Rummage Sales
 110 Garage & Rummage Sales
 111 Garage & Rummage Sales

Garage & Rummage Sales
 112 Garage & Rummage Sales
 113 Garage & Rummage Sales
 114 Garage & Rummage Sales

Garage & Rummage Sales
 115 Garage & Rummage Sales
 116 Garage & Rummage Sales
 117 Garage & Rummage Sales

Garage & Rummage Sales
 118 Garage & Rummage Sales
 119 Garage & Rummage Sales
 120 Garage & Rummage Sales

Garage & Rummage Sales
 121 Garage & Rummage Sales
 122 Garage & Rummage Sales
 123 Garage & Rummage Sales

Fabricating Shop Auction
 Saturday, May 2, 10:00 Noon
 5951 Dorrr Road - Howell, Michigan
 Roger Anderson (313) 229-9027

Moving Country Auction
 Sunday, May 3, 1987 12:00 noon
 2533 Bullard Road
 Roger Anderson (313) 229-9027

MOVING AUCTION
 SUNDAY - MAY 3 - 1 P.M.
 LOCATION: 2498 SHARMA LANE, HOWELL, MICH.
 Roger Anderson (313) 229-9027

Garage & Rummage Sales
 124 Garage & Rummage Sales
 125 Garage & Rummage Sales
 126 Garage & Rummage Sales

Garage & Rummage Sales
 127 Garage & Rummage Sales
 128 Garage & Rummage Sales
 129 Garage & Rummage Sales

Garage & Rummage Sales
 130 Garage & Rummage Sales
 131 Garage & Rummage Sales
 132 Garage & Rummage Sales

Garage & Rummage Sales
 133 Garage & Rummage Sales
 134 Garage & Rummage Sales
 135 Garage & Rummage Sales

Garage & Rummage Sales
 136 Garage & Rummage Sales
 137 Garage & Rummage Sales
 138 Garage & Rummage Sales

Garage & Rummage Sales
 139 Garage & Rummage Sales
 140 Garage & Rummage Sales
 141 Garage & Rummage Sales

Garage & Rummage Sales
 142 Garage & Rummage Sales
 143 Garage & Rummage Sales
 144 Garage & Rummage Sales

REACH OVER 165,000 POTENTIAL CUSTOMERS EVERY WEDNESDAY AND 136,000 EVERY MONDAY
HOUSEHOLD SERVICES BUYERS DIRECTORY
 Livingston County Phone 227-4438 or 548-2570
 Oakland County 437-4133, 348-3222, 685-8705 or 668-2121
 Wayne County 348-3022
 Washtenaw County 227-4436

ALUMINUM
 ALUMINUM SIDING
 ALUMINUM ROOFING
 ALUMINUM DOORS
 ALUMINUM WINDOWS

BRICK, BLOCK, CEMENT
 BRICK LAYING
 BLOCK LAYING
 CEMENT WORK

BUILDING & REMODELING
 BATHROOMS
 KITCHENS
 ADDITIONS

QUALITY BUILDING
 ROOFING
 SIDING
 GUTTERS

APPLIANCE REPAIR
 REFRIGERATORS
 STOVE
 WASHING MACHINES

CEMENT, BRICK, BLOCK
 CONCRETE
 FOUNDATIONS
 DRIVEWAYS

BATHROOM REMODELING
 TUBS
 SHOWERS
 VANITIES

LONG PLUMBING
 PLUMBING
 HEATING
 AIR CONDITIONING

APPLIANCE MAINTENANCE
 REFRIGERATORS
 STOVE
 WASHING MACHINES

CEMENT, BRICK, BLOCK
 CONCRETE
 FOUNDATIONS
 DRIVEWAYS

BATHROOM REMODELING
 TUBS
 SHOWERS
 VANITIES

LONG PLUMBING
 PLUMBING
 HEATING
 AIR CONDITIONING

ADORA ASPHALT SERVICES
 ASPHALT
 DRIVEWAYS
 PARKING LOTS

CEMENT, BRICK, BLOCK
 CONCRETE
 FOUNDATIONS
 DRIVEWAYS

BATHROOM REMODELING
 TUBS
 SHOWERS
 VANITIES

LONG PLUMBING
 PLUMBING
 HEATING
 AIR CONDITIONING

ADORA ASPHALT SERVICES
 ASPHALT
 DRIVEWAYS
 PARKING LOTS

CEMENT, BRICK, BLOCK
 CONCRETE
 FOUNDATIONS
 DRIVEWAYS

BATHROOM REMODELING
 TUBS
 SHOWERS
 VANITIES

LONG PLUMBING
 PLUMBING
 HEATING
 AIR CONDITIONING

BULLDOZING
 DRIVERS
 TRUCKING
 REMEDIATION

NORTHVILLE REFRIG.
 REFRIGERATORS
 AIR CONDITIONING
 HEATING

DAVE STEFANO'S
 LANDSCAPING
 TREE CARE
 MAINTENANCE

COUNTRY SIDE LANDSCAPING
 LANDSCAPING
 TREE CARE
 MAINTENANCE

PAINTER
 INTERIOR PAINTING
 EXTERIOR PAINTING
 WALL PAPERING

FOR QUALITY SOD
 SOD GRASS
 TURF
 MAINTENANCE

EARL EXCAVATING
 EXCAVATING
 FOUNDATIONS
 SEPTIC SYSTEMS

TOPSOIL
 TOPSOIL DELIVERY
 SOIL TESTING
 SOIL ENRICHMENT

PROFESSIONAL LANDSCAPING
 LANDSCAPING
 TREE CARE
 MAINTENANCE

FOR QUALITY SOD
 SOD GRASS
 TURF
 MAINTENANCE

PAINTING
 INTERIOR PAINTING
 EXTERIOR PAINTING
 WALL PAPERING

FOR QUALITY SOD
 SOD GRASS
 TURF
 MAINTENANCE

EARL EXCAVATING
 EXCAVATING
 FOUNDATIONS
 SEPTIC SYSTEMS

TOPSOIL
 TOPSOIL DELIVERY
 SOIL TESTING
 SOIL ENRICHMENT

PROFESSIONAL LANDSCAPING
 LANDSCAPING
 TREE CARE
 MAINTENANCE

FOR QUALITY SOD
 SOD GRASS
 TURF
 MAINTENANCE

PAINTING
 INTERIOR PAINTING
 EXTERIOR PAINTING
 WALL PAPERING

FOR QUALITY SOD
 SOD GRASS
 TURF
 MAINTENANCE

EARL EXCAVATING
 EXCAVATING
 FOUNDATIONS
 SEPTIC SYSTEMS

TOPSOIL
 TOPSOIL DELIVERY
 SOIL TESTING
 SOIL ENRICHMENT

PROFESSIONAL LANDSCAPING
 LANDSCAPING
 TREE CARE
 MAINTENANCE

FOR QUALITY SOD
 SOD GRASS
 TURF
 MAINTENANCE

PAINTING
 INTERIOR PAINTING
 EXTERIOR PAINTING
 WALL PAPERING

FOR QUALITY SOD
 SOD GRASS
 TURF
 MAINTENANCE

EARL EXCAVATING
 EXCAVATING
 FOUNDATIONS
 SEPTIC SYSTEMS

TOPSOIL
 TOPSOIL DELIVERY
 SOIL TESTING
 SOIL ENRICHMENT

PROFESSIONAL LANDSCAPING
 LANDSCAPING
 TREE CARE
 MAINTENANCE

FOR QUALITY SOD
 SOD GRASS
 TURF
 MAINTENANCE

PAINTING
 INTERIOR PAINTING
 EXTERIOR PAINTING
 WALL PAPERING

FOR QUALITY SOD
 SOD GRASS
 TURF
 MAINTENANCE

103 Garage & Remunage Sales

NORTHVILLE UNITED... ANNUAL GARAGE SALE... Eight Mile and Tall Road... 8 am to 5 pm Saturday...

NORTHVILLE 5 Mile North... 8 am to 5 pm Friday... Northville Moving Sale... Antique, collectibles, and other...

NORTHVILLE May 13-14... 10 am to 5 pm... Garage sale... 4000 items for sale...

NORTHVILLE May 21-22... 9 am to 5 pm... Glass shower doors... spreaders, heaters, etc...

NORTHVILLE May 29-30... 9 am to 5 pm... Garage sale... 4000 items for sale...

NORTHVILLE May 31... 9 am to 5 pm... Garage sale... 4000 items for sale...

104 Household Goods

GISSON freezer with cabinet... excellent condition... \$129.95...

FRIGIDAIRE top freezer... excellent condition... \$159.95...

FRIGIDAIRE side-by-side... excellent condition... \$199.95...

FRIGIDAIRE top freezer... excellent condition... \$159.95...

FRIGIDAIRE top freezer... excellent condition... \$159.95...

FRIGIDAIRE top freezer... excellent condition... \$159.95...

104 Household Goods

FRIGIDAIRE top freezer... excellent condition... \$159.95...

FRIGIDAIRE top freezer... excellent condition... \$159.95...

FRIGIDAIRE top freezer... excellent condition... \$159.95...

FRIGIDAIRE top freezer... excellent condition... \$159.95...

FRIGIDAIRE top freezer... excellent condition... \$159.95...

FRIGIDAIRE top freezer... excellent condition... \$159.95...

104 Household Goods

FRIGIDAIRE top freezer... excellent condition... \$159.95...

FRIGIDAIRE top freezer... excellent condition... \$159.95...

FRIGIDAIRE top freezer... excellent condition... \$159.95...

FRIGIDAIRE top freezer... excellent condition... \$159.95...

FRIGIDAIRE top freezer... excellent condition... \$159.95...

FRIGIDAIRE top freezer... excellent condition... \$159.95...

104 Household Goods

FRIGIDAIRE top freezer... excellent condition... \$159.95...

FRIGIDAIRE top freezer... excellent condition... \$159.95...

FRIGIDAIRE top freezer... excellent condition... \$159.95...

FRIGIDAIRE top freezer... excellent condition... \$159.95...

FRIGIDAIRE top freezer... excellent condition... \$159.95...

FRIGIDAIRE top freezer... excellent condition... \$159.95...

104 Household Goods

FRIGIDAIRE top freezer... excellent condition... \$159.95...

FRIGIDAIRE top freezer... excellent condition... \$159.95...

FRIGIDAIRE top freezer... excellent condition... \$159.95...

FRIGIDAIRE top freezer... excellent condition... \$159.95...

FRIGIDAIRE top freezer... excellent condition... \$159.95...

FRIGIDAIRE top freezer... excellent condition... \$159.95...

107 Miscellaneous

MINK suite. Needs lining... \$199.95...

MINK suite. Needs lining... \$199.95...

MINK suite. Needs lining... \$199.95...

MINK suite. Needs lining... \$199.95...

MINK suite. Needs lining... \$199.95...

MINK suite. Needs lining... \$199.95...

107 Miscellaneous

MINK suite. Needs lining... \$199.95...

MINK suite. Needs lining... \$199.95...

MINK suite. Needs lining... \$199.95...

MINK suite. Needs lining... \$199.95...

MINK suite. Needs lining... \$199.95...

MINK suite. Needs lining... \$199.95...

108 Miscellaneous

WANTED baseball cards... \$1.99...

WANTED baseball cards... \$1.99...

WANTED baseball cards... \$1.99...

WANTED baseball cards... \$1.99...

WANTED baseball cards... \$1.99...

WANTED baseball cards... \$1.99...

108 Miscellaneous

WANTED baseball cards... \$1.99...

WANTED baseball cards... \$1.99...

WANTED baseball cards... \$1.99...

WANTED baseball cards... \$1.99...

WANTED baseball cards... \$1.99...

WANTED baseball cards... \$1.99...

109 Lawn & Garden

FLORING shrubs... \$1.99...

FLORING shrubs... \$1.99...

FLORING shrubs... \$1.99...

FLORING shrubs... \$1.99...

FLORING shrubs... \$1.99...

FLORING shrubs... \$1.99...

111 Farm Products

ALFALFA hay... \$1.99...

ALFALFA hay... \$1.99...

ALFALFA hay... \$1.99...

ALFALFA hay... \$1.99...

ALFALFA hay... \$1.99...

ALFALFA hay... \$1.99...

119 Farm Equipment

1971 LARGE Ford tractor... \$1,999...

1971 LARGE Ford tractor... \$1,999...

1971 LARGE Ford tractor... \$1,999...

1971 LARGE Ford tractor... \$1,999...

1971 LARGE Ford tractor... \$1,999...

1971 LARGE Ford tractor... \$1,999...

151 Household Pets

GERMAN Shepherd... \$1,999...

GERMAN Shepherd... \$1,999...

GERMAN Shepherd... \$1,999...

GERMAN Shepherd... \$1,999...

GERMAN Shepherd... \$1,999...

GERMAN Shepherd... \$1,999...

152 Horses & Equipment

IMMEDIATE opening... \$1,999...

IMMEDIATE opening... \$1,999...

IMMEDIATE opening... \$1,999...

IMMEDIATE opening... \$1,999...

IMMEDIATE opening... \$1,999...

IMMEDIATE opening... \$1,999...

160 Help Wanted

URGENT opening... \$1,999...

URGENT opening... \$1,999...

URGENT opening... \$1,999...

URGENT opening... \$1,999...

URGENT opening... \$1,999...

URGENT opening... \$1,999...

161 Help Wanted

URGENT opening... \$1,999...

URGENT opening... \$1,999...

URGENT opening... \$1,999...

URGENT opening... \$1,999...

URGENT opening... \$1,999...

URGENT opening... \$1,999...

162 Help Wanted

URGENT opening... \$1,999...

URGENT opening... \$1,999...

URGENT opening... \$1,999...

URGENT opening... \$1,999...

URGENT opening... \$1,999...

URGENT opening... \$1,999...

164 Help Wanted

URGENT opening... \$1,999...

URGENT opening... \$1,999...

URGENT opening... \$1,999...

URGENT opening... \$1,999...

URGENT opening... \$1,999...

URGENT opening... \$1,999...

165 Help Wanted

URGENT opening... \$1,999...

URGENT opening... \$1,999...

URGENT opening... \$1,999...

URGENT opening... \$1,999...

URGENT opening... \$1,999...

URGENT opening... \$1,999...

Vertical text on the far left edge of the page.

Vertical text on the far right edge of the page.

Touch of Country Shoppe 3rd Annual Mother's Day Sale Special Hour. Includes images of lawn mowers and promotional text.

Becko 3pt. Finish Mower \$995.00. Features: 60" x 72" deck, 42" cut, 10" wheels. Includes image of the mower.

Unlimited Performer. Increase your mowing quality. Woods mow'n machine. Includes image of a riding lawn mower.

Becko 3pt. Rototiller \$895.00. Features: 60" x 72" deck, 42" cut, 10" wheels. Includes image of the tillage implement.

Manpower. Largest Temporary Service. Jobs available in various fields including industrial, warehouse, and office work. Includes contact information.



A Class Act

Whether you're selling dancing lessons, renting tuxedos or just looking for a new top hat, you'll need to pick the right partner before stepping out on the town. That's where we step in. We're Sliger-Livingston Publications, publishers of the Green Sheet classified ads.

Through the Monday Green Sheet, we can give you a receptive audience. For just \$5.74 (non-commercial rate) we will place your 10-word classified ad in the Monday Green Sheet, which is delivered free to over 49,500 households in Livingston County, South Lyon and Milford.

For your convenience, you can place your classified ad in the Monday Green Sheet through any one of these local phone numbers:

- Brighton.....(313) 227-4436
- Dexter.....(313) 426-5032
- Fowlerville.....(517) 548-2570
- Hartland.....(313) 227-4436
- Livingston County.....(517) 548-2570
- Milford.....(313) 685-8705
- Northville.....(313) 348-3022
- Novi.....(313) 348-3022
- Pinkney.....(313) 227-4437
- South Lyon.....(313) 437-4133

Don't wait for the last minute on this great advertising medium. Our phones get busier as the deadlines get nearer so it helps if you call early. The deadline for the Monday Green Sheet is noon Friday.

Don't get your toes stepped on. Call Sliger-Livingston. We're a real 'class act.'



the NOV! NEWS Living

HIGHLIGHTS:
Novi Jaycees slate Meet the Candidate night/6C

DYSLEXIA:
Noted educator to speak at Sheraton Oaks/3C

FAMILY COOKING:
Former Novi woman authors new cookbook/5C

COMEDY CLUBS:
Nightclubs aiming to bring back the laughs/6C

1C
THURSDAY
April 30,
1987

MICHIGAN SESQUICENTENNIAL

THE HISTORY AROUND US

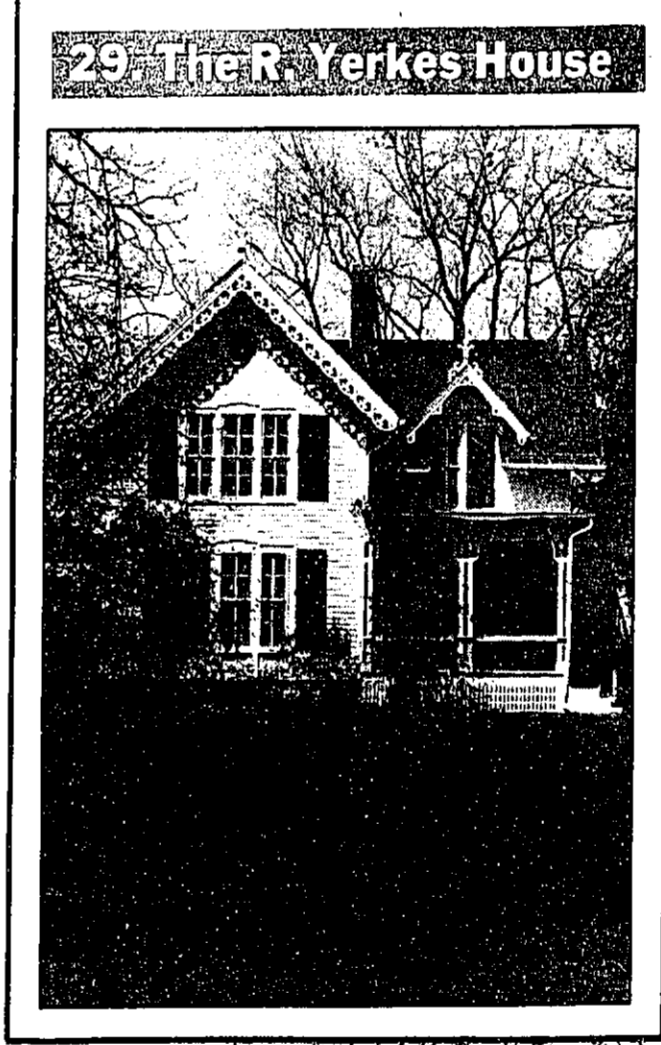
Editor's note: Information on the Livingston County sites was compiled by Staff Writer Robin Garies, with special thanks to Barbara Isell of Howell. Staff writer Marilyn Herald compiled the Milford/South Lyon information and Editor Jean Day wrote up the Northville/Novi sites.

As the state celebrates its 150th birthday, it is helpful to look to the past for a glimpse at how our forefathers lived during the time our state was beginning to grow. And in the Sliger-Livingston readership area, where there are many homes and buildings still preserved from our past, a walk back in time is probably just around the corner.

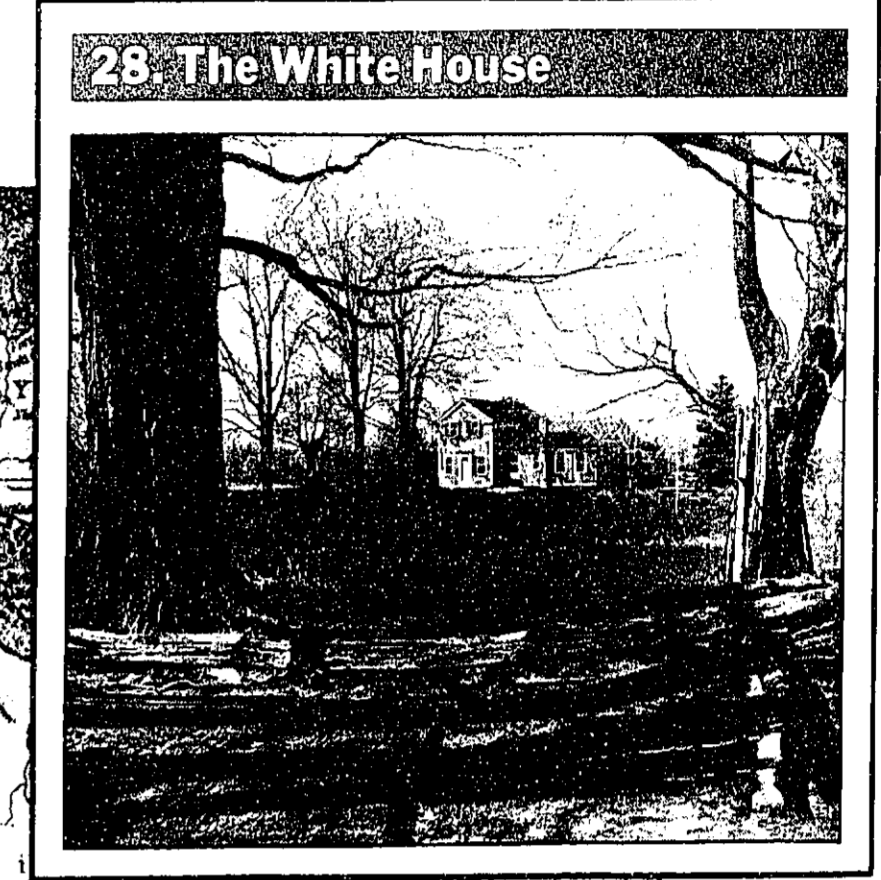
The following historical homes and buildings were compiled from Michigan's register of historical sites. In order to be considered on the State Register by the Michigan Historical Commission, a site must qualify as either historically or architecturally significant. A site is nominated after an investigation by the state or by interested parties.

Divided here by geographic areas, the sites are also numbered to correspond with the locator maps at the bottom of the page.

1. The Ann Arbor and Northern Michigan Railway Station (the Howell Depot) was built in 1886 after construction of a railroad from Toledo to Frankfort. Today, the Depot is the home of the Livingston County Historical Museum. The museum houses many artifacts from Howell and surrounding areas. Located at 1226 Wetmore at the foot of Walnut Street in Howell, the Depot is open to the public from 10 a.m. to 5 p.m. Monday-Friday, and 10 a.m. to 4 p.m. Saturday. There is no admission charge.
2. The Appleton House was built between 1849-1855. Although it is not known for sure, it is assumed John Appleton built the home, since he was a carpenter. The Appleton family came to Brighton in the late 1830s. For years, the home was used as a boarding house. The Appleton House is located at 325 S. Grand River Avenue, at the corner of Spencer Road, in Brighton.



Photos by CHRIS BOYD



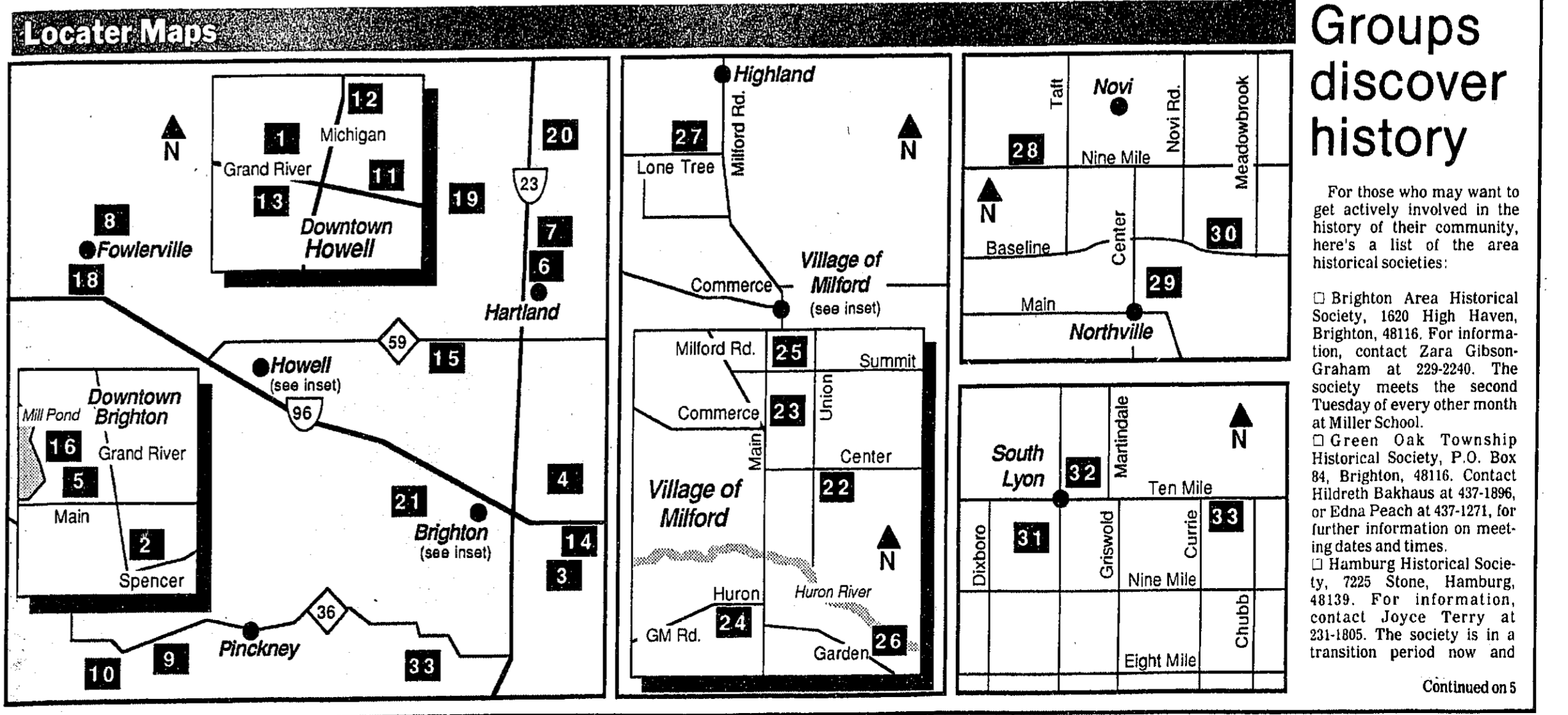
28. The White House

3. The Kinsley Bingham House in Green Oak Township was constructed in 1842. A Democrat, Bingham became justice of the peace and postmaster of Green Oak shortly after settling there in 1833. He was elected the first Judge of Probate in Livingston County and was elected to the Michigan Legislature in 1837, 1839, 1841 and 1842.

When the Free Soilers and the Whigs united under a single state ticket — called the Republican Party — in 1854, Bingham was selected as its nominee for governor and became the first Republican governor of Michigan.

The Bingham "mansion," located at 13270 Silver Lake Road, a quarter mile east of Kensington Road, is now the headquarters of the American Aggregates Corp. It is not open to the public except on rare occasions. A state historical marker designates the site.

4. The Brighton District No. 8 Schoolhouse (Lyons School) was built in 1875. Children from kindergarten through eighth grade attended school there from the fall of 1875 to 1956. It is one of the few standing one-room schoolhouses left in the state. Today, the schoolhouse is under restoration by the Brighton Area Historical Society. The schoolhouse is located at 11455 Buno Road, just west of Pleasant Valley Road, in Brighton.
5. The Brighton Old Town Hall was built in 1879 and served as a fire hall, jail and town meeting hall. From 1927-57, the Brighton Library occupied the hall. The library was moved back into the building in 1966, and left again in 1981. Today, the building houses Poor Richard's Bookshoppe on the lower level. The top floor is occupied by the Brighton Area Historical Society and an annex of the Brighton Library. The Old Town Hall is located at 202 W. Main Street, adjacent to Mill Pond Park in downtown Brighton.
6. The Florence Dearing Museum now occupies what was once the Old Town Hall in Hartland. Built in 1893, the hall was once used as the township and fire halls. When Hartland built a new town hall in 1970, the old hall was deeded to the Hartland Area Historical Society. After the society restored the building, it moved the Florence B. Dearing Museum to its present site in 1971. Dearing was a longtime Hartland resident and the town's librarian. The Florence Dearing Museum is located at 3503 Avon, at the corner of Crouse Road and Hartland Road, in Hartland. The museum is open every Saturday during the summer from 10 a.m. to 1 p.m. There is no admission fee, but donations are welcome.
7. The First Congregational Church (Hartland Music Hall) was built in 1858 for \$1,900. It was the Village of Hartland's first church. In 1929, John Robert Crouse purchased the church for \$500 and converted it into a music hall. It has been refurbished many times, but it still stands as the Hartland Music Hall. The Music Hall is located at 3819 Avon Street in downtown Hartland.
8. The Fowlerville School (Fowlerville Middle School) is a three-story building built in 1923. The original school in Fowlerville



Groups discover history

For those who may want to get actively involved in the history of their community, here's a list of the area historical societies:

- Brighton Area Historical Society, 1620 High Haven, Brighton, 48116. For information, contact Zara Gibson-Graham at 229-2240. The society meets the second Tuesday of every other month at Miller School.
- Green Oak Township Historical Society, P.O. Box 84, Brighton, 48116. Contact Hildreth Bakhaus at 437-1806, or Edna Peach at 437-1271, for further information on meeting dates and times.
- Hamburg Historical Society, 7225 Stone, Hamburg, 48139. For information, contact Joyce Terry at 231-1805. The society is in a transition period now and



Comedy Clubs



Are you the type who counts the days and hours until you get your next fix of David Letterman or Saturday Night Live?

If so, you might be interested in knowing something: There's a source for live comedy right in your own back yard. Though southeastern Michigan isn't exactly a comedy-lover's heaven, there are comedy clubs within driving distance of just about every town in the area.

Most comedy clubs feature a headliner comedian—often a big name on the national comedy scene—and usually a couple of backups, as well. The best part about comedy clubs is that you're right there where the action is, and somehow, that just makes the comedian that much funnier.

Another advantage (well, depending on how you look at it) is that in comedy clubs, the audience often becomes incorporated into the comedian's routine. If your feelings bruise easily, don't get up and walk in front of the stage on your way to the restroom.

On the other hand, if you're a natural ham, comedy clubs are a great place to show off. Most have an open-mike night, when you have a chance to try out your act on the audience.

Following is a list of some of the comedy clubs in southeastern Michigan:

Cnxxtions, 2900 N. East St., Lansing. Phone (517) 482-1468.
Cnxxtions features professional

Live laughs close to home

comedians from all over the United States, and even England and Canada, says manager Chris Cole. Some of the big names that have appeared there include Pat Paulsen, one-time candidate for president; and Sinbad, who appeared on Star Search.

Cnxxtions has shows three nights a week: Thursdays at 9 p.m., when admission is \$3; and Friday and Saturday at 8 and 10 p.m., with a \$6 admission charge.

Open-mike night is Sunday, with admission a paltry 92 cents (it's done in conjunction with WLNZ radio, 92.1). If you want to do a routine, you've got to call ahead or stop by to sign up.

The club offers full bar service, but food is limited to snacks such as pretzels and popcorn. Seats for all shows are reserved, and it's recommended that you call ahead.

Some of the shows coming up at Cnxxtions are: April 30 to May 2, Craig Shoemaker, with backup David Klein; and May 7-9, Ted Norkey, with Lowell Sanders. "Norkey has a very dry sense of humor," says Cole. "He does impressions of people with crackers in his mouth."

Mainstreet Comedy Showcase, 314 E. Liberty, Ann Arbor. Phone

(313) 996-9080.

Mainstreet also features comedians from the professional circuit, says Linda Merriman, a spokesperson for the club.

"They're all national," she says. "Most come from New York or L.A."

Mainstreet begins its week with open-mike night, at 8:30 p.m. Tuesday. Admission is \$2. If you want to perform, you need to call ahead of time to sign up.

The headline acts are Wednesday through Saturday. Shows are at 8:30 p.m. Wednesday and Thursday and 8:30 and 11 p.m. Friday and Saturday. Admission ranges from \$6 to \$10, with the cheaper rates earlier in the week.

Mainstreet offers a full bar service and light snacks. Reservations are suggested for all shows.

Some of the upcoming acts are: May 1-2, Rita Rudner, a New York comedian who's been on Letterman and HBO; May 6-9, Dave Coulier; May 13-16, Jack Coen; and May 20-24, Pat Paulsen.

Mark Ridley's Comedy Castle, inside the Northwood Inn, 2593 Woodward, Berkley. Phone (313) 542-9900.

The Comedy Castle has shows six nights a week, beginning with

amateur night at 8:30 p.m. Monday. Admission is \$3, and you must call ahead if you want to perform.

A new headliner is featured every week at the Tuesday through Saturday shows. Times are 8:30 p.m. Tuesday through Thursday, with an admission of \$7; and 8:30 and 11 p.m. Friday and Saturday, when admission is \$10. Reservations are recommended, especially for weekend shows.

Comedy Castle offers a full menu and a full bar.

Upcoming shows include: Tonight through May 2, Thom Sharp; May 5-9, Mark Pitta; and May 12-16, Bobby Slayton.

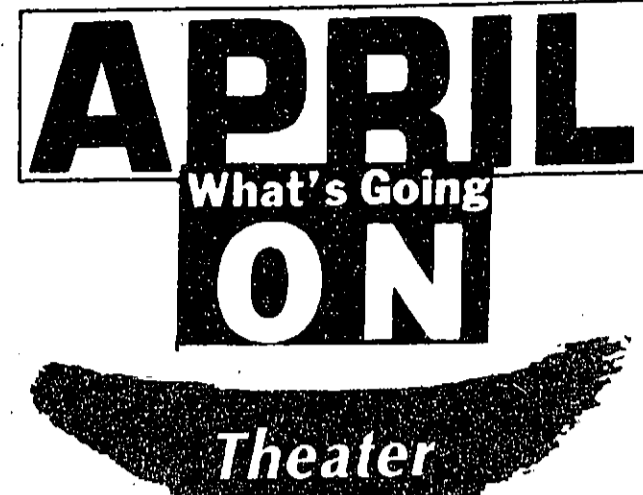
Comedy Crossing, in the Red Cedars Restaurant, 23055 Telegraph at Nine Mile, Southfield. Phone (313) 353-5170.

Comedy Crossing offers patrons a different taste of comedy.

"Primarily, our headliners are the best local comedians we can get," says owner Jack Freed. During the entire month of May, the headliner is Ron Coden, with his brand of musical comedy. Warmups include Norma Zager, Paul Stanley, Jeff Hobson and Mark Sweetman.

Comedy Crossing has a complete beverage service. No food is served at the club, but food is available at the Red Cedars Restaurant.

Shows are at 8:30 and 11 p.m., and admission is \$6. Reservations are required. There is no open-mike night.



THEATRE: "STAR SPANGLED GIRL," Wayne Memorial High School, Glenwood east of Wayne Road, Wayne The Spotlight Players will present the Neil Simon comedy "Star Spangled Girl" May 1-3 and 8-9 at the Norman O. Stockmeyer Center for the Performing Arts at Wayne Memorial High School. Doors open at 7:30 p.m. Tickets are \$4.50 general admission; \$3.50 for students under 18 and senior citizens. For more information call 326-5242 "GRAVITY," Trinity House, 38840 W. Six Mile, Livonia Meet the Wizard. He knows your needs, he knows your stuck in the ruts of life. See the tricks, the flash, the colors. "Gravity" will be held May 1-2, 8-9, 15-16, 22-23, 28-30 and June 4-6 at Trinity House. Curtain is at 8 p.m. Friday and Saturday performances are \$4; Thursday performances are \$3. Reservations must be made in advance by calling 464-6302 "SMALL WAR ON MURRAY HILL," Henry Ford Museum Theater, Dearborn. Pulitzer Prize-winner Robert E. Sherwood's romantic comedy runs through May 16 at Henry Ford Museum Theater. An alluring yankee rebel named Mrs. Robert Murray tempts British General Sir William Howe to tarry at her home instead of fighting on behalf of his king and country. Good food, strong drink, intelligent conversation and finally, one suspects, Mrs. Murray herself are the weapons used in her campaign to keep Howe from driving a wedge between the armies of Washington and Putnam. Performances are at 8 p.m. Fridays and Saturdays. Tickets are \$6.50 each for reserved seats. For information call 271-1620. A combination dinner and theater package, at \$20.50 per person, is also available.



ANTIQUES AND EXHIBITS: VILLAGE ANTIQUES

SHOW, Lovett Hall, Greenfield Village, Dearborn Forty-five dealers from Maine to California will be participating in the third annual Village Antiques Show May 15-17. Exhibitors will be selling items that reflect the quality and scope of the museum collections. Included among the selections will be furniture and accessories, paintings, jewelry, toys, glass and ceramics, textiles, clocks and watches and automotive ephemera. Organized by the President's Society of Henry Ford Museum and Greenfield Village, all proceeds from the show and related events go toward the museum and its Educational programs **18TH ANNUAL ANTIQUES SHOW AND SALE, Sherman Middle School, 14470 N. Holly Road, Holly** The 18th Annual Antiques Show and Sale, sponsored by the Northwest Oakland County Historical Society, will be held Saturday, May 2, from 11 a.m. to 8 p.m. and Sunday, May 3, from noon to 5 p.m. at Sherman Middle School. The show will feature many quality dealers exhibiting a variety of antique furniture and collectibles. A Country Bakeshop will be stocked with old fashioned delectables provided by Society members. In addition there will be a tea room featuring hot and cold sandwiches, soup, salad and beverages and a raffle. Admission is \$2 **CHESANING BOULEVARD ASSOCIATION'S FOURTH ANNUAL ANTIQUES FESTIVAL, Chesaning** The Chesaning Boulevard Association's Fourth Annual May Day Antiques Festival will be held on the lawns of the Olde Home Shoppes and Market Street Square May 2 and 3 from 10 a.m. to 6 p.m. Admission is free. Rain or shine. Featuring quality antique dealers, old time entertainment, food and fun. For more information, call (517) 845-7775 or 845-3196 **YOUNG AMERICA: A FOLK ART HISTORY, Henry Ford Museum, Dearborn** "Young America: A Folk Art History," is a nationally touring exhibition sponsored by IBM Corporation featuring more than 100 folk art objects dating from 1776 to 1914. The exhibition will present a social history of the time as seen through the eyes of its largely untrained artists. There is no additional charge beyond the regular admission **"FROM SEED-TIME TO HARVEST," University of Michigan Museum of Art, 525 S. State and University, Ann Arbor** An African granary door, an American plow, European prints and drawings, Hopi Kachina figures, Chinese snuff bottles, and Amish quilts are of the unusual objects included in the exhibition "From Seed-Time to Harvest" at the University of Michigan Museum of Art through May 31. Hours are 10 a.m. to 4 p.m., Tuesday through Friday; 1:30 p.m. Saturday. Admission is free.

AND MORE: "AN EVENING WITH CHARLOTTE FORD," Birmingham Theatre, Birmingham Noted author, lecturer, fashion authority and civic leader, Charlotte Ford will discuss a multitude of subjects May 18 at the Birmingham Theatre. All sponsors and patron ticket holders will be invited to attend a special afterglow, "On a Sweet Note," hosted by international beauty expert and renowned party giver Mira Linder. Lincoln-Mercury Division of Ford Motor Company and The Michigan Woman Magazine are sponsoring the event. Tickets for an evening with Charlotte Ford are available at The Michigan Woman Magazine (851-5755), Mira Linder Spa in Southfield (356-5810) or the Birmingham Theatre box office

John Laffrey's: An emphasis on nouvelle cuisine

dining
out
**DIANE
KOVACS**

Don't let the name fool you. John Laffrey's Steak & Grill at 38410 Grand River in Farmington Hills is not owned by John Laffrey. And even though steaks are featured, the menu also offers chicken and pasta dishes as well as fresh seafood.

"John Laffrey's Steak & Grill" is the latest enterprise to occupy the building just east of Ten Mile on Grand River that previously contained Sixpence, Dr. Doolittle's and The Interchange.

So why the name — John Laffrey's Steak & Grill? The restaurant is owned by Bill Raven, who was friends with John Laffrey during their college days. Laffrey, who has operated several other restaurants in southeast Michigan, agreed to help his friend open up the new restaurant, serving as a consultant and lending his name to the enterprise.

Except for the name, however, much has changed at the restaurant since it opened last November.

Laffrey is no longer around. The kitchen staff and waitpersons has undergone a 100 percent turnover. And the menu has been expanded considerably — with the seafood, chicken and pasta being added to the selection of steaks which dominated the original menu.

The kitchen is under the capable management of Matt Jagusch, who came to Laffrey's after having previously served with Chuck Muer (The Diggers and Southfield Charley's) and Norman LePage (Nifty Norman's and The Oyster Bar).

The restaurant offers a pleasant respite in an era when there's an emphasis on *nouvelle cuisine* and elaborate French sauces.

The food at John Laffrey's is simple and straight-forward. Nothing particularly fancy. Just simply-prepared fresh food with no grandiose pretenses.

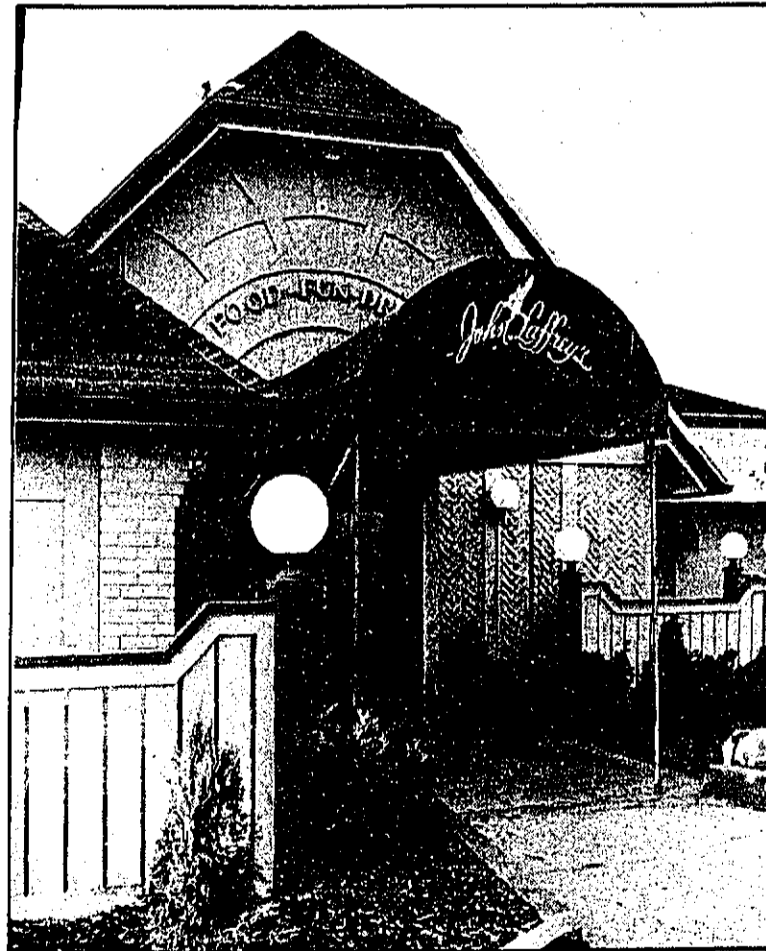
The decor is pleasant enough with shades of tan and beige accented by deep blues. Tables are covered with beige cloths and topped off with a vase of silk flowers.

Meals come with a basket of homemade bread, tossed salad, potato and vegetable — something of a change from the many restaurants which offer you a choice of potato or vegetable.

But you may want to begin the meal with one of the nine appetizers offered on the menu. Included are shrimp cocktail, fresh oysters and Oysters Rockefeller as well as Wild Highland Mussels (mussels steamed in garlic, wine and herbs) and Cajun Tender Tips (tenderloin meat cooked New Orleans style).

Steaks remain a specialty with the menu containing New York sirloin, Delonico steaks and Filet Mignon.

Vying with the steaks for popularity are the seafood dishes — Lake Perch, Stuffed Flounder, Chargrilled Shrimp, Roadhouse-style Froglegs



Steak and seafood are John Laffrey's specialties

and Wild Highland Mussels.

The four chicken dishes on the menu include Chicken Teriyaki, Cajun Chicken and Chicken Diablo (breast of chicken lightly breaded in a mustard sauce and sauteed).

Another concession to more diversified dining tastes is the selection of pasta selections on the menu — fresh seafood pasta, shrimp and artichoke pasta, lemon chicken fettucini and pasta primavera.

Prices are not inexpensive, ranging from \$8.50 for fish & chips to \$14.95 for a 14-ounce center-cut pork chop.

Like the entrees, the dessert menu tends to be rather simple and straightforward with ice cream, hot fudge sundaes and cheese cake augmented by several special tortes.

John Laffrey's still has a way to go before establishing itself as a first-rate restaurant. The dinner music, for example, had an "easy listening" flavor that was disconcerting. And the waitress forgot to bring the appetizer we had ordered.

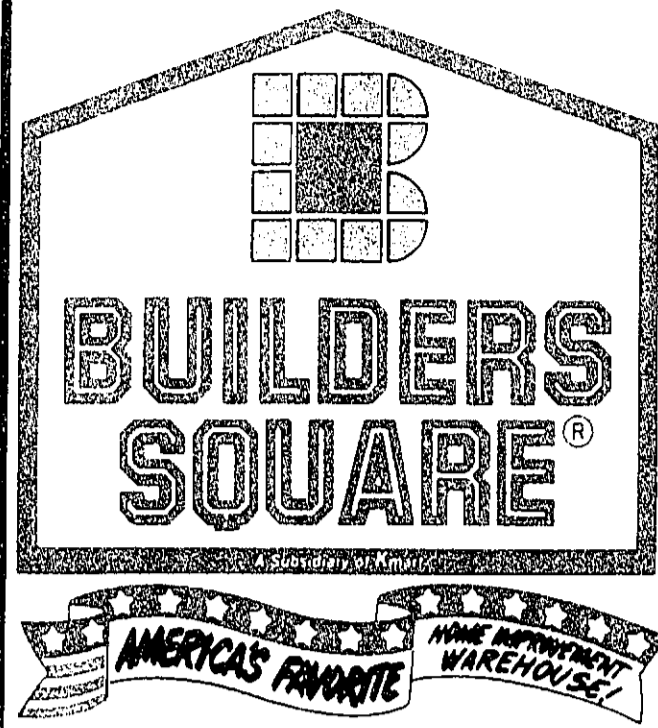
Still, the restaurant has potential. For people who want a good piece of steak or fresh seafood, it's definitely worth the trip.

John Laffrey's Steak & Grill, 38410 Grand River, Farmington Hills. Open Monday through Thursday from 11:30 a.m. to 10 p.m., Friday from 11:30 a.m. to 11 p.m. and Saturday from 5:30 to 11 p.m. Liqueur license. All major credit cards. 477-3111.

Cini Patak, chairman of the Northville Arts Commission and a partner in Design Alliance, a full service advertising agency which specializes in annual reports and internal communications, has just moved across town to North Valley Drive in North Beacon Woods. Her favorite things include:

1. SPENDING quiet time with my husband and daughters.
2. COMPLETING a communications campaign that helps a client get important orders.
3. READING a well written book.
4. VISITING the Detroit Institute of Arts with my daughters.
5. BEING a part of the Northville community.

**My
Favorite
Things**

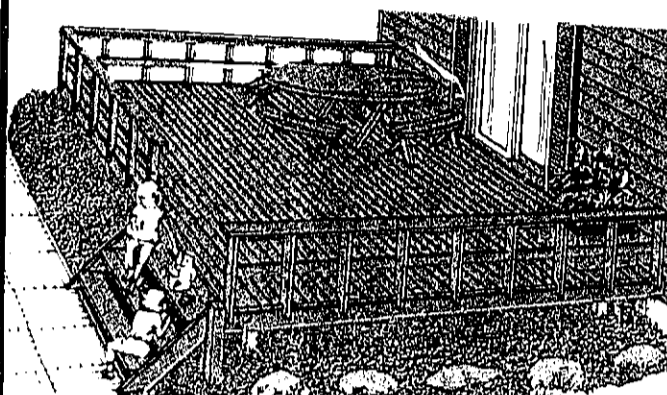


MAYDAY!

SALE STARTS WEDNESDAY
APRIL 29, PRICES GOOD
THRU TUESDAY MAY 5, 1987

Urgent values
that won't wait!

12 PAGES OF SUPER BUYS!



2 x 4, 8-FOOT
TREATED LUMBER

163

.40 CCA agency graded
stamped #2 or better

2 ACRES
OF HOME IMPROVEMENTS!

Glidden

SPRED
WALL
PAINT

522
GALLON

- Latex flat interior paint.
- Durable, quick-drying.
- Smooth velvety finish is completely washable.
- Easy clean-up with soap and water.

OVER 2,000 COLORS
MIXED FREE!

COMBINATION

STORM
DOOR
\$33 #161

- 32 x 80 OR 36 x 80
- One inch mill finish storm door in your choice of 32" or 36"
- We have every door, wood or aluminum or patio, all at Warehouse prices!

CROFT

MILL
FINISH

CONCRETE
MIX

197

80 LB
BAG

- Simplifies projects for do-it-yourselfers and provides contractors with the solution for many specialized jobs. For setting posts, building sidewalks, steps, patios, curbs, footers, floors, downspout troughs, etc.



BUILDERS BEST
SILICONE CAULK

286

- White, clear, or bath white
- Perfect household sealer.
- Ideal for sealing and caulking bathtubs, plumbing fixtures and storm windows.
- Use for water proofing repair of electrical insulation, fabrics, leather goods, rubber goods, convertible tops and windshields.

#10 SMOOTH ROD
CAULKING GUN... 87¢

9" PAINT
ROLLER
SET

186

#938-TAP

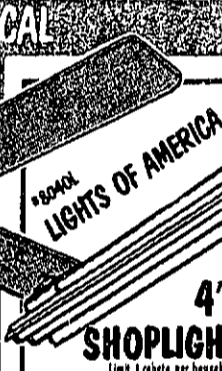
- All purpose set contains: Metal tray, rod and nut roller frame, "One TYPAR" roller cover.



BIARRITZ
52-INCH
CEILING FAN

8437

- Designed exclusively for Builders Square by Hunter, a name you can trust.
- This fan has 3-speed control, fully reversible motor, and real wood blades.
- Your choice of antique or polished brass finish or white/brass.



ANTIQUE OR
POLISHED BRASS

ANTIQUE OR
POLISHED BRASS

ANTIQUE OR
POLISHED BRASS

- For both exposed and concealed interior wiring.



ELECTRICAL

ROMEX
LIGHTS OF AMERICA

4' SHOPLIGHT

12-2MM/O
NON-METALLIC
GROUNDED
ELECTRICAL
CABLE
"ROMEX WIRE"

1717
250' roll

- For both exposed and concealed interior wiring.

WITH
BULBS

OUR
LOW
PRICE
\$11.77

MFR'S MAIL-IN
REBATE
-2.00

YOUR FINAL COST
AFTER REBATE
\$9.77

- A must for any shop
- Grounded cord, two 48" bulbs included.



4' x 8'
TREATED
LATTICE

1122

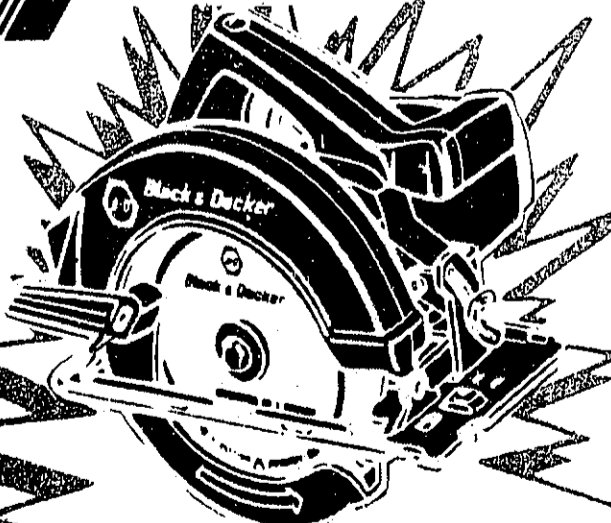


8-FOOT JUMBO
TREATED
LANDSCAPE TIMBERS

282

- Treated timbers resist rot and decay.
- Each timber has two flat sides, ideal for stacking.
- Create flower gardens or embankments, the possibilities are left to your imagination.

BLACK & DECKER



7 1/4" - 1 1/2 HP
CIRCULAR SAW

\$28

- Utility general purpose circular saw.
- Two handle.
- Double insulation.

GARDEN

GAS
STRING TRIMMER

OUR LOW PRICE \$77

MFR'S MAIL-IN REBATE -10.00

YOUR FINAL COST AFTER REBATE \$67

- McCulloch quality at a Builders Square price!
- Features include a 21.2cc McCulloch engine, electronic ignition, large fuel capacity, and many standard McCulloch safety features.



#EB-1

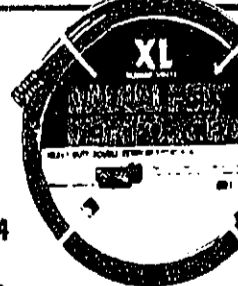
5/8" x 60'
"RADIAL
BELT"
HOSE

OUR LOW PRICE 744

MFR'S MAIL-IN REBATE -2

YOUR FINAL COST AFTER REBATE 544

- No worries about cracking or bursting.
- Double reinforced rubber/vinyl for super strength and flexibility in all temperatures.



#9650-60



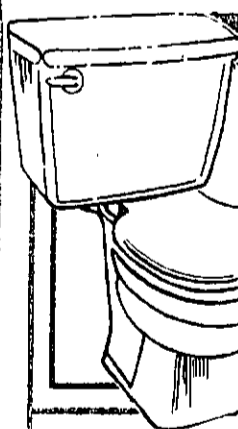
HYPONEX
ALL
PURPOSE
POTTING
SOIL

OUR LOW PRICE 122

MFR'S MAIL-IN REBATE -50¢

YOUR FINAL COST AFTER REBATE 72¢

- Provides aeration/drainage for healthy root growth.



ECONOMY
TOILET

\$28

- China toilet: white only.
- Water saver.
- Seat not included.

#R0101B

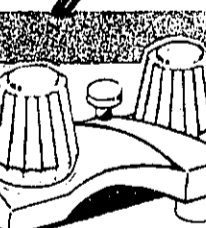


TOILET
SEAT

344

#66TT

- Top-lightening hinge for easy installation.
- Multi-coat, gloss enamel finish.
- Economy price.



STERLING
FAUCET CO.

2 HANDLE
LAVATORY
FAUCET

WITHOUT POP-UP

1550

#064-79

- Washerless, drip-free.
- Twist-tight installation.
- Water miser aerator.



75 lbs.
HTH DRY
CHLORINATOR
GRANULAR

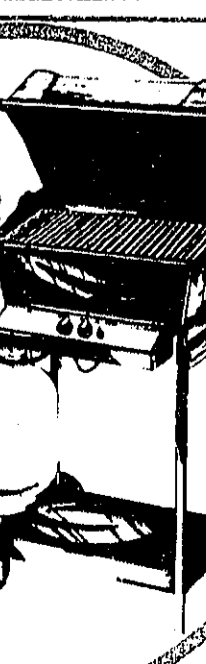
\$83

Sunbeam

24,000 BTU
GAS
GRILLMASTER

\$99

- 225-sq. inch cooking area.
- Attractive patio cart construction.
- Two work tables.
- 24,000 BTU gas tank included.
- Heat resistant handles.



#3047

BUILDERS SQUARE®

SAVINGS BY THE YARD

LOW WAREHOUSE PRICES ON LANDSCAPING ITEMS!

THIS SEASON'S SPECIALS ARE IN FULL BLOOM NOW, PLUS! WE OFFER THE LOWEST PRICES GUARANTEED!



GERANIUMS
87¢ EACH

- Grown in 4 inch pots
- Perennial favorite for container or garden planting
- Very colorful; likes sun.



SHADE TREES **12.54** EACH

- Grown in 5 gallon containers
- Choose from quality assortments

YOUR CHOICE!
4-PACK VEGETABLE OR FLOWERING PLANTS **4.44** EACH

GARDEN MUMS **87¢** EACH

GROWN IN 4 INCH POTS

VEGETABLE OR FLOWERING PLANTS PER FLAT..... **5.28** EA

HANGING BASKETS **5.77** EACH

- Flowering plants
- Grown in 10 inch hanging baskets



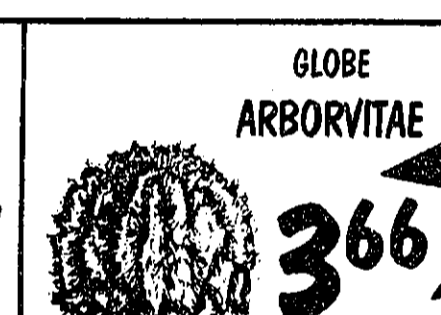
GOLDEN EUONYMUS **1.77**

- Grown in one gallon containers
- Evergreen shrub
- Oval, dark green leaves with bright yellow edges.



JUNIPER **2.77**

- Fast growing, wide spreading shrub.
- Fine leathery blue green foliage.
- A hardy, versatile landscape plant.
- Grown in one gallon containers



GLOBE ARBORVITAE **3.66**

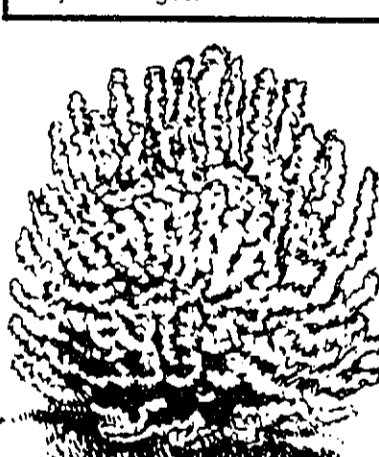
- Grown in one gallon containers

TROPICAL FOLIAGE PLANTS

IN 6-INCH CONTAINERS

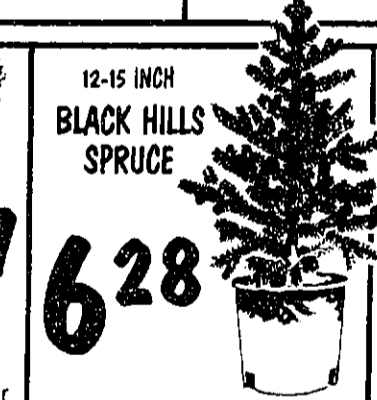
YOUR CHOICE!

2.77 EACH

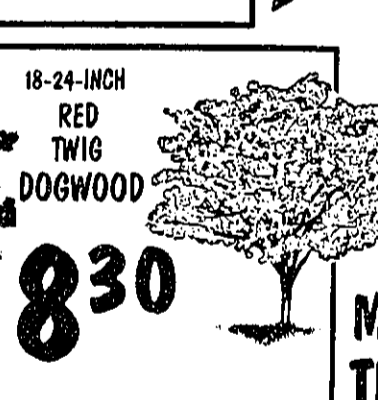


10-12-INCH SPREADING YEW **5.77**

- Excellent for foundation plant
- Holds its deep green color year round.



12-15 INCH BLACK HILLS SPRUCE **6.28**

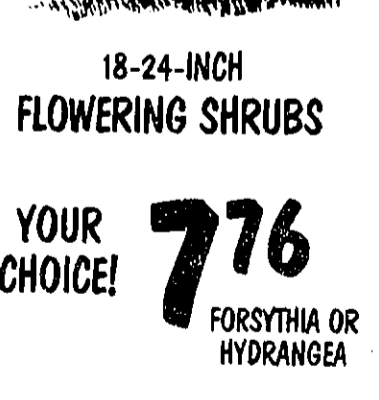


18-24-INCH RED TWIG DOGWOOD **8.30**

MORE TROPICALS IN 8-INCH CONTAINERS!

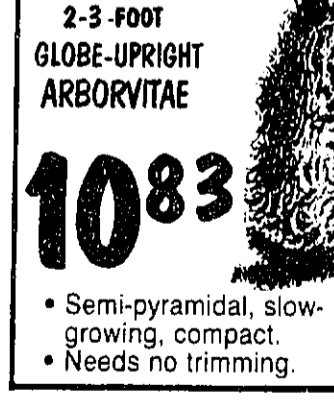
YOUR CHOICE: **7.44** EACH

- Grown in 8 inch containers
- Choose from an assortment of the most popular tropicals
- Perfect for indoors or outdoors



18-24-INCH FLOWERING SHRUBS **7.76**

YOUR CHOICE! FORSYTHIA OR HYDRANGEA



2-3 FOOT GLOBE-UPRIGHT ARBORVITAE **10.83**

- Semi-pyramidal, slow-growing, compact.
- Needs no trimming.



2-3 FOOT COLORADO BLUE SPRUCE **14.77**



6-7 FOOT FLOWERING CRAB TREE **15.77**

WATCH YOUR SAVINGS GROW... WITH THESE GREAT BUYS!



3-CUBIC FOOT PINE BARK MULCH **1.97**

- Helps retain moisture
- Adds a decorative touch to your landscaping
- 3-cu. ft. bag



2-CUBIC FOOT CANADIAN SPHAGNUM PEAT MOSS **5.88**

- Drinks up water like a sponge, holds it like a miser.



3x50 - FOOT MULCH FILM **98¢** EACH

- Eliminates hoeing
- Warms plant bed
- Conserves moisture
- Reduces watering



VIGORO DEEP GREEN LAWN FOOD **7.44**

- Rebate limit 10 bags
- OUR LOW PRICE!
- LESS MFR. REBATE... \$3
- YOUR FINAL COST AFTER REBATE... **4.44**



SCOTT'S TURF BUILDER **7.44**

- Rebate limit \$36 per household
- OUR LOW PRICE!
- LESS MFR. REBATE... \$1
- YOUR FINAL COST AFTER REBATE... **6.44**

OFFER ENDS MAY 31, 1987 MUST BE POST MARKED NO LATER THAN JUNE 15, 1987

LOW WAREHOUSE PRICES ON LAWN AND GARDEN NEEDS!

4 HP BUILDERS SQUARE 21" SELF-PROPELLED LAWN MOWER \$244

• Our deluxe model, powered by 4-hp Briggs & Stratton engine; height adjusts for precision cut; folding box-style handle for easy storage; sturdy plastic catcher with generous 2 bushel capacity.

#2104-54

8" WHEELS 21" SELF-PROPELLED LAWN MOWER \$266

• 3.5 HP Briggs & Stratton engine. 8" wheels with height adjusters. Self-propelled, rear bagger.

#21951

3-HP 20-INCH MURRAY MOWER \$99

• Briggs & Stratton 3-HP engine. Manual restart. Manual height adjustment. Fixed 7/8" chrome handle. 6 tires. Recracker rod.

#22-20

21" 3.5HP MURRAY MOWER \$196

• Rear bagger. Briggs & Stratton engine. 8" wheels with deluxe height adjusters and rear bag unit.

#21851

22" HIGH WHEELER BLACK & DECKER 18" MOWER \$188

• Powerful Briggs & Stratton engine. High-wheel model preferred by professional landscapers.

#2240-01

BLACK & DECKER 18" MOWER \$118

• Lightweight, easy to operate. 41 cutting heights. Compact chisel blades for close trimming.

#8000

BLACK & DECKER 10-INCH BUMP FEED WEED TRIMMER \$24

• Adjustable auxiliary handle for easier control.

• Well-balanced, easy to use.

• 1-year limited mfr. warranty.

#8288

BLACK & DECKER 13-INCH HEDGE TRIMMER \$27

• Double-edge blades cut in either direction. 2 handles for added control. Powerful 2.0 amp motor for smooth, consistent trimming.

• 1-year limited factory warranty.

#8115

BLACK & DECKER 14" ELECTRIC STRING TRIMMER \$36

• The edge guide wheel turns the E-Z trimmer into a neat cutting edger in one easy move.

#E2-141

BLACK & DECKER 16-INCH DOUBLE-EDGE HEDGE TRIMMER \$37

• OUR LOW PRICE! LESS MFR. REBATE... \$5

• YOUR FINAL COST AFTER REBATE... **\$32**

#8124

BLACK & DECKER 2-HP GAS EDGER \$154

• Extended front wheel arm and heavy-duty double handle.

• Ideal for edging curbs.

#732

Gering WATER HOSES - LONG LASTING QUALITY

<p>Gering 1/2" x 50-FOOT TIRE CORD REINFORCED HOSE \$4.84</p> <p>OUR LOW PRICE</p> <p>LESS MFR. REBATE... 1.50</p> <p>YOUR FINAL COST AFTER REBATE... 3.34</p> <p>#6151S-50</p>	<p>Gering 5/8" x 50 FEET ALL-SEASONS REINFORCED HOSE \$8.24</p> <p>OUR LOW PRICE</p> <p>LESS MFR. REBATE... \$2</p> <p>YOUR FINAL COST AFTER REBATE... 6.24</p> <p>#RQ-5850</p>	<p>Gering 5/8" x 100-FOET ALL-SEASONS REINFORCED HOSE \$14.37</p> <p>OUR LOW PRICE</p> <p>LESS MFR. REBATE... \$2</p> <p>YOUR FINAL COST AFTER REBATE... 12.37</p> <p>#BQ-58100</p>
---	---	---

TRUE TEMPER JACKSON 4 1/2-CUBIC FOOT WHEEL BARROW \$32

• Seamless polyethylene tray.

• Pneumatic tires for stability.

• Wood handles.

#P450

LAWN SPRINKLERS AT PRICES THAT WON'T SOAK YOU!

RAIN-BIRD OSCILLATING SPRINKLER \$2.97

#0-12

- Spans 2300 sq. ft.
- Precision spray jets.
- 32 settings for exact, pinpoint coverage.
- Stable, wide base.

RAIN-BIRD IMPULSE SPRINKLER \$4.44

#K-5

- High-impact plastic and stainless steel head.
- Full or part circle coverage up to 5200 sq. ft.
- Heavy-duty, metal spike anchors firmly in turf.

RAIN-BIRD 5-PATTERN MEMORY NOZZLE \$5.88

#T-15-C

- Nozzle rotates to set and hold five spray patterns.
- Locking clip holds to "on" position.
- Solid metal body.

OUR LOW PRICE! LESS MFR. REBATE... \$2

YOUR FINAL COST AFTER REBATE... **3.88**

LIMIT 1 REBATE PER HOUSEHOLD

RAIN-BIRD PULSATING-SLED BASE SPRINKLER \$7.88

#PS-5

- Full or part circle coverage up to 85' diameter. Spray guide arm controls stream.

OUR LOW PRICE! LESS MFR. REBATE... \$2

YOUR FINAL COST AFTER REBATE... **5.88**

LIMIT 1 REBATE PER HOUSEHOLD

RAIN-BIRD TRAVELING SPRINKLER WITH SHUTOFF \$34

#TS-250

- Automatically travels up to 75' feet across your lawn.

BUILDERS SQUARE®

HOME IMPROVEMENT WAREHOUSE

GREAT SAVINGS! ON THESE FINE GRILLS AND ACCESSORIES!



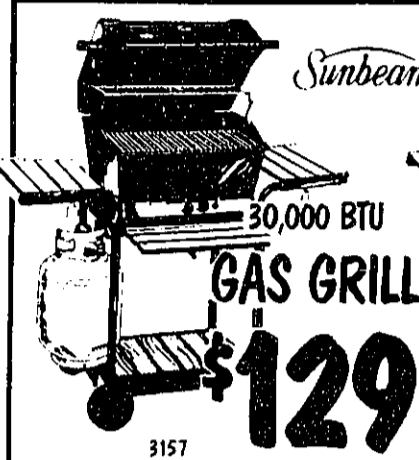
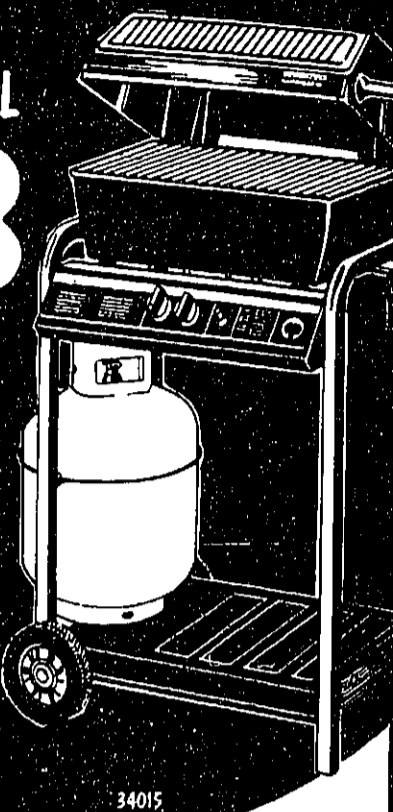
20 LB.
LIQUID PROPANE
TANK
1888

Holds enough liquid propane gas for up to 20 hours of cooking.

THERMOS

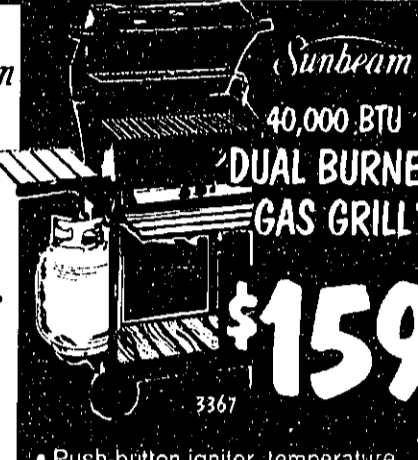
24,000 BTU
GAS GRILL
\$88

- Pre-assembled steel double burner
- Resists rust and corrosion: 3 year warranty
- Installite™ push-button electronic ignitor
- 20" x 12 1/8" casting size



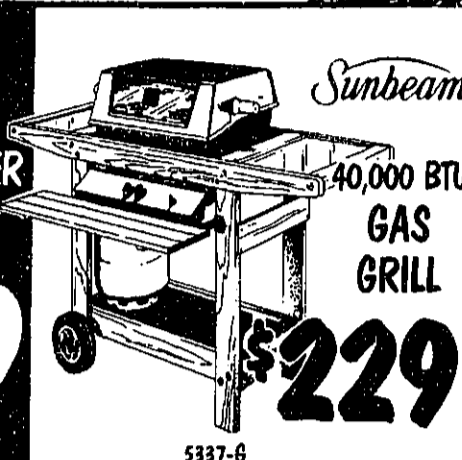
30,000 BTU
GAS GRILL
\$129

- Two handy preparation tables/fold-away front tray
- Instant ignitor
- Full view window
- 20-lb. tank with fuel sentry



40,000 BTU
DUAL BURNER
GAS GRILL
\$159

- Push-button ignitor, temperature indicator
- Full view window
- Two handy preparation tables/fold-away front tray
- Handy utensil holders
- 20-lb. tank with fuel sentry



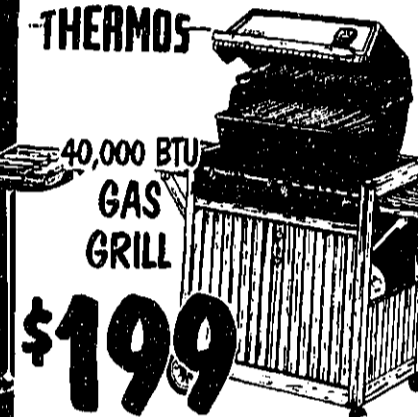
40,000 BTU
GAS GRILL
\$229

- Genuine redwood patio cart
- 60-minute timer, temperature indicator
- 2 glass shelves and glass window
- 40,000 BTU dual burner
- 20-lb. tank included with fuel sentry



42,000 BTU
GAS GRILL
\$199

- Exclusive PermaShell™ shelving by Werzallit™
- Deluxe gas monitor™ fuel gauge
- 2-piece porcelainized steel cooking grid
- Installite™ push button electronic starter



40,000 BTU
GAS GRILL
\$199

- 2-piece porcelainized steel cooking grid
- Deluxe gas monitor™ fuel gauge
- Installite™ push-button electronic starter
- Genuine wood cabinetry



42,000 BTU
DELUXE
GAS GRILL
\$279

- Drillwood cart with door enclosure
- Tempered glass shelves
- 60-minute timer, temperature indicator
- Tank with fuel sentry
- 42,000 BTU Dual burner



CHARCOAL
CART
GRILL
12988

- Extra large cooking surface
- Cast iron cooking grates
- Heavy duty steel construction
- 5-Yr. warranty on hood



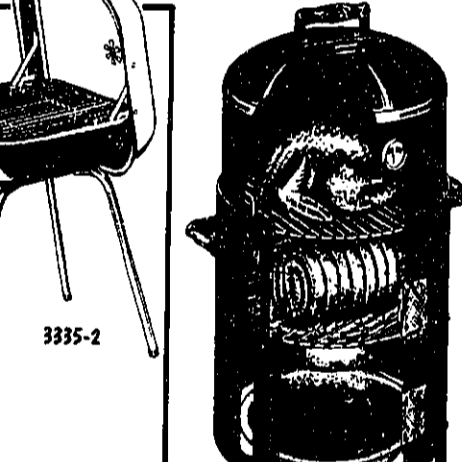
weber
14 1/2 INCH
"SMOKEY JOE"
GRILL
1997

- Complete with new ash catcher and removable legs
- Black porcelain finish, inside and out
- Accessories available



MECCOR
SIZZLER SUPREME
SMOKER GRILL
2777

- 2 1/2" square grill with 382 square inches of cooking space
- Two position grid tilts to cook rare and well done at the same time



MECCOR
SWINGER II
SMOKER
GRILL
3997

- Big 18 3/4" x 18 3/4" square cooking grid
- Heavy gauge steel construction
- Durable, glossy, heat-resistant, DuraFuse™ finish
- Hood and Bowl vents regulate air flow temperature
- Elevated fire grate/removable ash dump



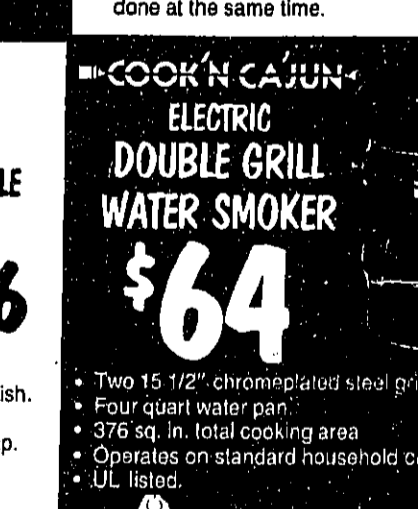
MECCOR
COOK 'N' CAJUN II
GAS/WATER
SMOKER
AND
GRILL
\$129

- Use as a smoker or conventional grill
- Features include built-in heat indicator, heat setting knob, and easy start ignitor
- Portable and convenient
- 11-lb. fuel tank included



weber
ONE-TOUCH
COVERED KETTLE
GRILL
4966

- Black porcelain-sealed finish
- Dome lid - 18 1/2" in diameter
- Convenient ash catcher for easy clean-up
- Tripod construction for stability
- Wood handles



MECCOR
COOK 'N' CAJUN
ELECTRIC
DOUBLE GRILL
WATER SMOKER
\$64

- Two 15 1/2" chrome-plated steel grids
- Four quart water pan
- 376 sq. in. total cooking area
- Operates on standard household current
- UL listed



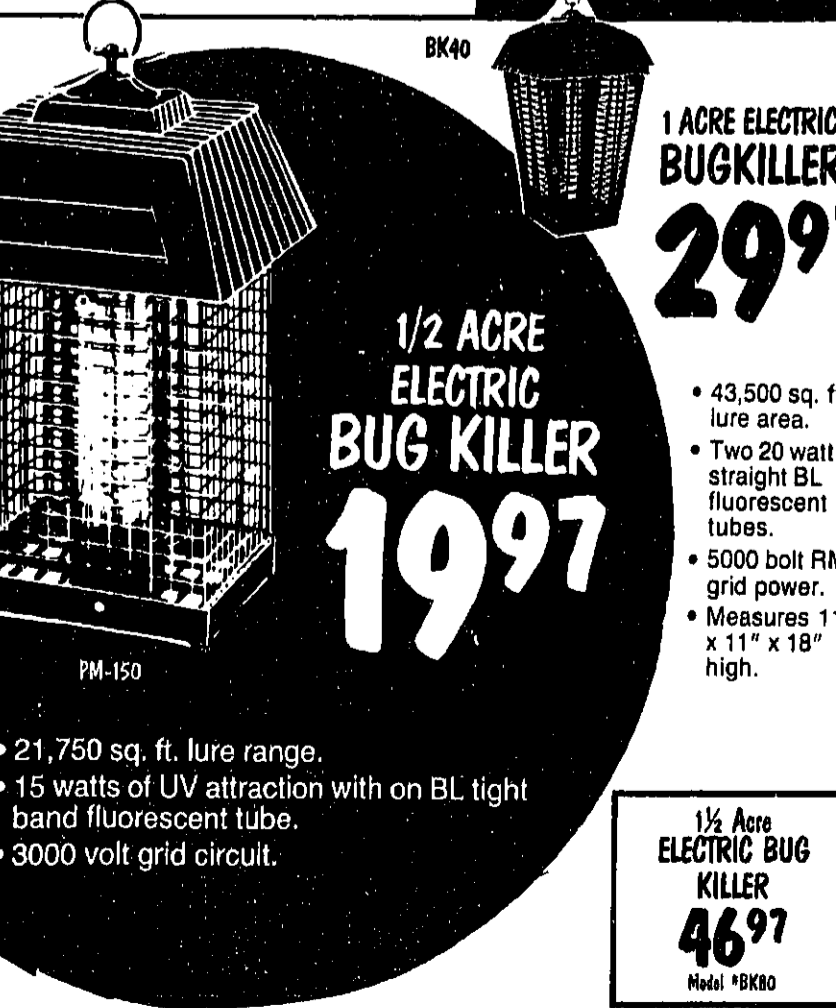
MECCOR
DOUBLE GRILL
CHARCOAL/WATER
SMOKER
2996

- Five grills in one: smokes, barbecues, roasts, steams and bakes
- Dome shaped hood circulates heat, moisture and smoky vapors evenly
- Built-in heat indicator



Char-Broil
LAVA ROCK
198

- Genuine volcanic rock for all gas grills



1/2 ACRE
ELECTRIC
BUG KILLER
1997

- 21,750 sq. ft. lure range
- 15 watts of UV attraction with on BL tight band fluorescent tube
- 3000 volt grid circuit



14"
CORDWHEEL
487

- Holds up to 125 ft. of 15-3 outdoor extension cord
- Good for rope, chains, etc.
- Just roll it up and store it away



LARGE GRILL COVER
997

- Vinyl grill cover
- Fits most grills up to 23" x 28"



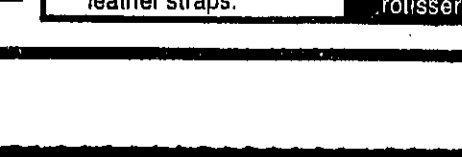
PROFESSIONAL
BARBECUE
TOOLS
997

- Stainless steel
- Oakwood handles with brass rivets and leather straps



MESQUITE BLEND
CHARCOAL
BRIQUETS
244

- "The Taste of Texas"



HARDWOOD BLEND
CHARCOAL
BRIQUETS
297

- Fast starting, slow burning

OVER TWO ACRES... PACKED WITH HOME IMPROVEMENT BARGAINS

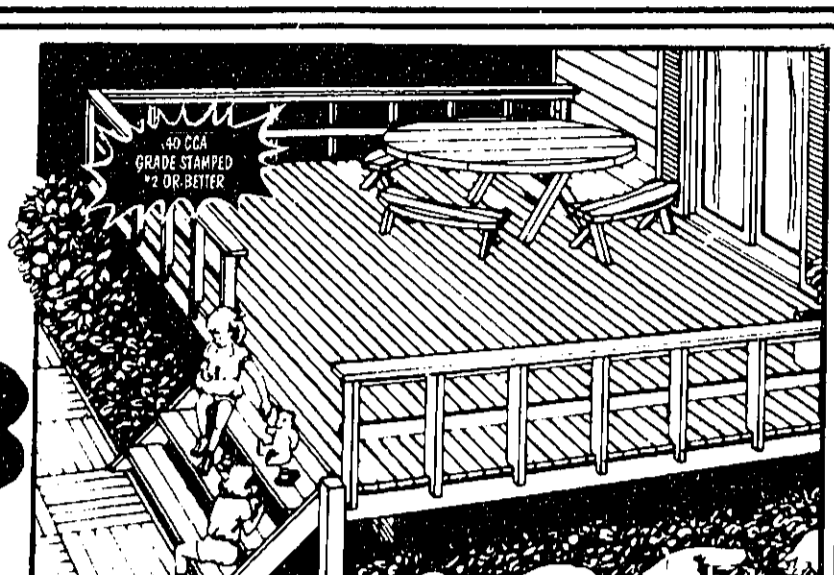


Thompson's
WOOD
PROTECTOR
986

- Three-way protection for exterior wood
- Preserves, waterproofs and protects against sun and weather

2"x4"x8'
TREATED
DIMENSION
LUMBER

163



SIZE	8 FOOT	10 FOOT	12 FOOT	14 FOOT	16 FOOT	SIZE	8 FOOT	10 FOOT	12 FOOT	16 FOOT
2"x4"	163	278	349	419	472	2"x10"	593	741	934	1256
2"x6"	314	393	519	639	729	4"x4"	386	632	722	992
2"x8"	470	549	727	N/A	973	4"x6"	773	979	1222	1653

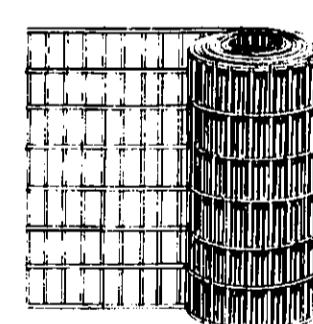
REINFORCING BARS

3/8"x20'
165

1/2"x20'
247

5/8"x20'
396

- Perfect for reinforcing concrete foundations, walks and slabs.



REINFORCING MESH

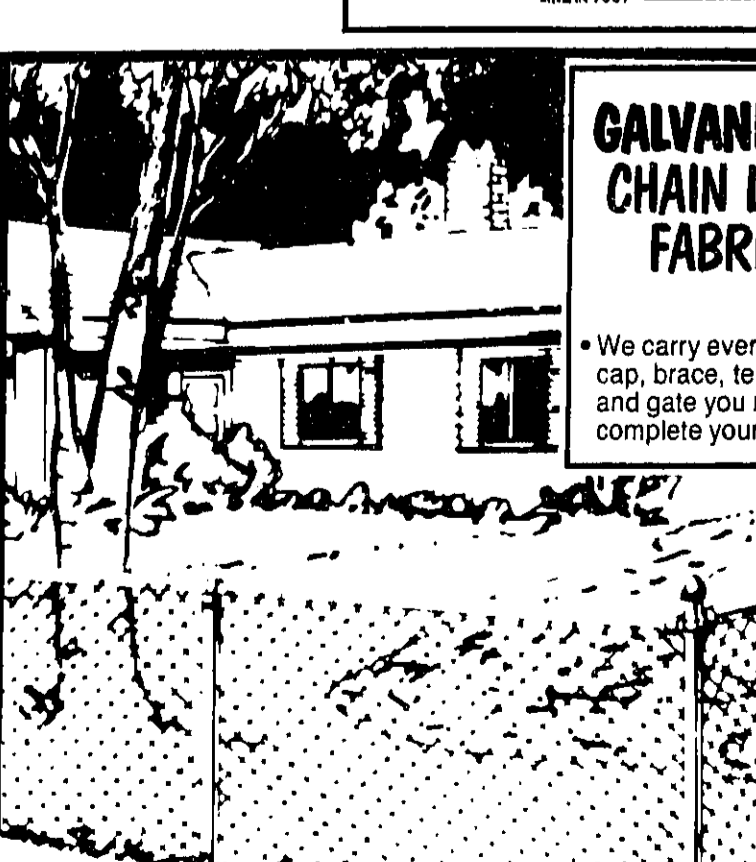
6x6x10x10-50' **1460**

6x6x10x10-150' **\$29**

6x6x10x10-150' **\$35**

6x6x6x6-50' **\$69**

- Metal fabric specially designed for reinforcing concrete foundations, slabs, walkways and other concrete projects.



20 GA. GALVANIZED POULTRY NETTING

18"x150' **8**

24"x150' **10**

36"x150' **14**

48"x150' **19**

60"x150' **23**

12"x150' **10**

- Specially woven for vertical and horizontal strength
- The reverse twist weave is designed to let netting unroll flat for easy handling

14 GA. UTILITY FABRIC

36"x50' **1682**

48"x50' **1996**

- A versatile galvanized welded fabric for anything from partitions to tennis courts
- A warehouse price that cannot be beat

GALVANIZED CHAIN LINK FABRIC

48"x50'
13-GAUGE
\$19

- We carry every post, cap, brace, tension bar and gate you need to complete your fence.

HEAVY DUTY NEW PORT WROUGHT IRON RAILING

4 FOOT **296**

5 FOOT **596**

- A heavy gauge wrought iron product
- Available in 4 foot or 6 foot lengths
- We have a complete line of accessories for your wrought iron railing needs

GALVANIZED HARDWARE CLOTH

24"x100' **68**

36"x100' **84**

24"x100' **99**

30"x100' **131**

24"x100' **81**

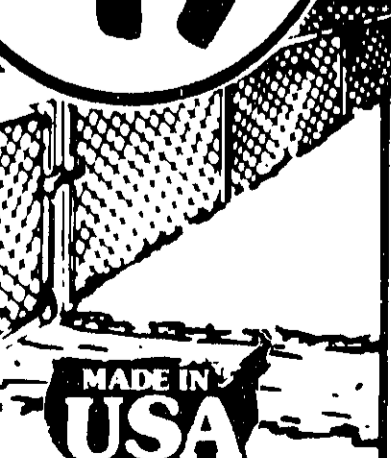
36"x100' **98**

24"x100' **111**

30"x100' **155**

6'x8' TREATED STACKADE FENCE PANEL

2463



1 TON POW'R PULL



2250

WE SELL VALUE!

#101 6 FOOT TEE- POSTS

197

TRUE TEMPER POST HOLE DIGGER

1988

- Painted for longer life and protection
- Heavy-weight construction
- Durable steel blades with stops
- Sturdy fire-hardened handles with 5/8" point spread

12 1/2 GA. HOT DIP FABRIC	
48"x50'	2387
60"x50'	2984
72"x50'	3496
1 3/8"x10' 6" TOP RAIL	398
LINE POST	
1 5/8" x 5' 6" .047	312
1 5/8" x 7' .055	441
1 5/8" x 8' .055	515
TERMINAL POST	
2 3/8" x 6' .047	498
2 3/8" x 7' .055	626
2 3/8" x 8' .055	744

BUILDERS SQUARE®

HOME IMPROVEMENT WAREHOUSE

MAYDAY!

Urgent values that won't wait!

36-INCH 3 STRAIGHT BLADE FAN

1033

- Compact motor with 3 speed pull chain
- 3 white painted metal straight blades
- White finish

52" 4 WOOD BLADE CEILING FAN

2822

- 3-speed pull chain operation
- Reversible motor
- Light kit adaptable
- Available in white or brown

42-INCH SHOW BIZ ANTIQUE BRASS POLISHED BRASS WHITE & POLISHED BRASS

3156

- Close-to-ceiling design
- Quiet, 3-speed motor
- Pull chain control
- Stenciled wood blades
- Light kit adaptable

52-INCH SCANDIA CEILING FAN

4333

- 50 inches in span
- 4 cane inspired wood blades
- Light up brass motor housing
- Built-in 3 speed control
- Reversible motor
- Lite kit adaptable

48-INCH SUMMER BREEZE FAN

7347

- Available in 48" blade span
- Light up brass, antique brass, and antique white
- Real wood blades and motor housing enhanced with designer touches

9-INCH 2-SPEED OSCILLATING FAN

1144

- GM-902
- Automatic, full 90° span, variable elevation
- Energy efficient

12-INCH 3-SPEED OSCILLATING FAN

1344

- Powerful, energy efficient, precision built motor
- Whisper quiet, powerful cooling air flow
- Reinforced and closely spaced guard-wires

20" 2-SPEED FLOOR BOX FAN

1488

- 2-speed cooling effects

12-INCH ROTARY BOX FAN

1997

- 3 speeds
- Rotating lowered grill provides 360° wind deflection

16-INCH 3-SPEED OSCILLATING FAN

2588

- Full 90° span oscillating fan on sturdy, adjustable pedestal
- Variable height, speed and elevation for perfect airflow

QUALITY AIR CONDITIONERS BY

ECONOMICAL

5,000 BTU AIR CONDITIONER

OUR MOST ECONOMICAL MODEL!

- Designed for easy installation, compact and lightweight
- Cools quickly and efficiently with automatic thermostat control and high efficiency heat exchanger

\$225

WINDOW SHUTTERS 12.46

GOOD!

7,500 BTU AIR CONDITIONER

GOOD!

- All the regular features of our 5,000 BTU model with more than enough power to cool larger sized family rooms, playrooms, bedrooms or home office spaces

\$275

AIR CONDITIONER SUPPORT BRACKETS 12.46

BETTER!

12,500 BTU AIR CONDITIONER

BETTER!

- For larger rooms or high traffic areas that require maximum cooling with all the features of our smaller BTU air conditioners. Additional features include: Automatic Air circulation with air sweep and 12-hour timer for maximum energy savings

\$350

16-3" BTU AIR CONDITIONER COIL 2.84

BEST!

18,000 BTU AIR CONDITIONER

BEST!

- Top of the line, maximum cooling air conditioner. All the features of our 12,500 BTU model with the extra whisper quiet, energy efficient motor you need to cool larger or higher traffic areas.

\$450

OLD-FASHIONED STYLES AT OLD-FASHIONED PRICES!

8-INCH ROUND CEILING FAN GLOBE

392

- White globe available in polished or antique brass finish
- Popular styling at a popular price

FLORAL SCHOOL HOUSE

473

- Light kit comes complete with all mounting hardware, instructions, and pull chain

4-LIGHT KIT

1287

- Complete with all mounting hardware, instructions and pull chain
- Fits all standard ceiling fans

3-LIGHT VICTORIAN CEILING FAN KIT

1856

- Victorian decorator finish
- 3-light kit with pull chain
- Universal fit polished or antique brass

YEAR ROUND SAVINGS ON FIREPLACES!

PREWAY

36-INCH BUILDER'S MODEL FIRE PLACE

\$167

- 36" wide firebox opening
- Ideal for limited space installations

PREWAY

26-INCH FREE STANDING HEAT CIRCULATING FIRE PLACE

\$544

- High volume built in fan
- Automatic or manual control thermostat
- Removable ash drawer
- Beautiful mahogany finish

CHIMNEY CAPS

1526

- 8x8 17.86
- 13x13 19.53
- Installs in seconds - no tools!
- Protects against rain, birds and flying sparks
- Keeps out debris
- Model number reflects approximate size of flue's inner dimensions

BIG SELECTION WAREHOUSE SAVINGS!

ALMOND GRAPHICS POST FORMED COUNTERTOPS

280 (per sq. ft.)

5 foot... **1400**
6 foot... **1680**
8 foot... **2240**
10 foot... **2800**

American Woodmark Cabinets

60% OFF LIST PRICE!

Builders Square offers next week delivery on more than 7 American Woodmark contemporary and traditional styles. Cabinets are available in light, mid-tone and dark oak finishes.

Wheaton Elite
Forest Oak Mission Potomac Cameo Brookfield

UNDER CABINET COOKBOOK RACK

692

- Saves countertop space for dishes and cooking utensils
- Keeps hands free for stirring and measuring

UNDER CABINET

- SPICE RACK
- KNIFE RACK
- MESSAGE CENTER

797

ROLL-OUT TRASH CONTAINER

- PULL OUT DRY FOOD STORAGE SYSTEM
- 11-1/2" UNDER-SINK ROLL-OUT STORAGE TRAY

1247

PORTABLE SURFACE SAVERS

1178

- Will not mark when carved
- Cast Brass underbody
- Won't blister or scorch
- Won't stain or retain odors

American Woodmark Cabinets

60-INCH BROOKFIELD KITCHEN CABINET STARTER SET

\$129

- Rich oak finish
- Clean, simple styling for any decor
- Durable hardwood construction
- Countertop, sink, and faucet sold separately
- Consists of two-W1230 wall and one-60

30 INCH RANGE HOODS

DUCTLESS WHITE	DUCTED WHITE	COLORS DUCTLESS OR DUCTED
\$19	\$21	\$28

- Upfront fan and light controls
- Enclosed light
- Prewired for easy installation
- COLORS: Almond, Harvest Wheat, Avocado
- 36 inch range hoods also available

EVERYTHING, INCLUDING THE KITCHEN SINK!

SINKS

neptune 33" x 22" STAINLESS STEEL DOUBLE BOWL

\$22

- NR-48-3322
- 5-1/2" deep bowls
- Durable satin finish

8" DOUBLE BOWL... **\$65**

FAUCETS

KITCHEN FAUCETS

996

- Quality 8-inch kitchen faucet
- Cast Brass underbody
- Triple chrome plated
- Easy to install

KITCHEN FAUCET WITH SPRAY... \$14

DISPOSERS

sinkmaster 1/3 H.P. GARBAGE DISPOSER

\$29

- Heavy gauge carbon steel cutting assembly
- Corrosion proof
- E-Z mounting system

neptune SINGLE BOWL STAINLESS STEEL

\$25

- Self-rimming design
- Drain opening 5-1/2"

neptune 17" x 32" STAINLESS STEEL CORNER

\$89

- 6-1/2" deep bowls
- Heavy gauge stainless steel

Accent

SINGLE HANDLE KITCHEN FAUCET

3350

- 9" spout
- Washerless
- Twist-tite installation
- No tools required

SINGLE HANDLE FAUCET WITH SPRAY... \$42

neptune TRIPLE COMPARTMENT

HEAVY GAUGE STAINLESS

\$125

- Primaries 6-7/8"
- Secondary 5-1/8"

Accent

TWO HANDLE HIGH SPOUT FAUCET

\$49

- Washerless for long trouble-FREE operation
- 10-year drip FREE mg. warranty
- Conserves 30% more water

TWO HANDLE FAUCET WITH SPRAY... \$59

sinkmaster 1/2 H.P. GARBAGE DISPOSER

\$49

- Energy efficient motor
- Stainless steel grind ring and swivel impellers

1/2 HP GARBAGE... \$79

BUILDERS SQUARE®

HOME IMPROVEMENT WAREHOUSE

FLOORS AND CEILINGS!

Save the Warehouse Way
TOP TO BOTTOM!

Armstrong
BRISTOL
ROLL VINYL **224** SQ. YD.
2.99 L.F.

No wax - less work.
Seamless installation most rooms.

Armstrong
RESIDENTIAL DRY
BACK FLOOR TILE
18¢ SQ. FT.
"DO A 9'x12' FLOOR FOR
AS LITTLE AS 1944"

Bruce
OAK HARDWOOD FLOORS
12"x12"
OAK PARQUET **196** EACH
20 SQ. FT. CARTON... 39.20

ROYELLE
No wax - less work.
Seamless installation most rooms.
Recessed skulls, scratches.

296 3.95 LINEAR FOOT

CAMBAY
No wax - less work.
30% thicker than Royelle.
Protected against mold, mildew and bacteria.
Seamless installation, most rooms.

424 5.65 LINEAR FOOT

CASTILLIAN
No wax - less work.
Cushioned floor.
Flank approved.
5 year limited manufacturer's defect warranty.
Superior stain resistance.
Seamless installation - most rooms.

596 7.95 LINEAR FOOT

TRIM AND FIT KIT **498**

If at first you don't succeed, get a second floor FREE!

STYLISTIC **54¢** EACH

No wax, less maintenance.
Heavy-duty wear surface.
Easy to clean and care for.
Self-stick for quick installation.
Sold in cartons of 45 sq. ft.

NO WAX SELF STICK **34¢** EACH

ARMSTRONG MAKES INSTALLATION MISTAKE PROOF!
Just purchase 12 square yards or more of any Armstrong do-it-yourself floor and a Trim and Fit Kit. Installation kit will make a mistake Armstrong will replace the floor and the kit - FREE! Stop in for all the details!

SOLO IN CARTONS OF 45 SQ. FT.
"COVER A 9'x12' ROOM FOR AS LOW AS 36.72"

3"x48" OAK PLANKING **247** EACH
20 SQ. FT. CARTON... 49.40

Dura-finish - easy care, easy clean.
Tongue and groove for easy installation.
All necessary moulding and reducing strips available.

USG ceiling

FLEET STREET #290	160 EACH 2'x4'	CUSTOM WHITE #4290	19¢ EACH 12'x12'
GREYVICE #137	\$2 EACH 2'x4'	ARCTIC #4280	26¢ EACH 12'x12'
FIFTH AVE. #280	232 EACH 2'x4'	LACE #4260	32¢ EACH 12'x12'
FIFTH AVE. FIRECODED #220	256 EACH 2'x4'	ORLEANS #4270	38¢ EACH 12'x12'
STONEHURST CEILING TILE 2'x4'	184 EACH #380	FLEET STREET #230	216 EACH 2'x4'
		CHEYENNE #156	280 EACH 2'x4'

ALL CEILING TILE SOLD IN FULL CARTONS

EASY-CARE PVC ROLL-UP BLINDS

WHITE, WOODGRAIN OR ALMOND **296**

3' x 6'	3.77
4' x 6'	4.82
8' x 6'	8.21
10' x 6'	11.63

Classic vinyl roll-up.
Easy care, long wear, indoors or out.
Installation a breeze.
Available in a variety of colors.

MINI BLINDS

IN STOCK. TAKE THEM HOME AND PUT THEM UP TODAY!

PVC	1" SLAT			3/2" SLAT			WOOD		
	64"	72"	64"	64"	72"	64"	64"	72"	64"
23"	4.96	6.96	6.96	23"	11.96	14.96	23"	11.96	14.96
27"	5.96	7.96	7.96	27"	13.96	16.96	27"	13.96	16.96
29"	6.96	7.96	8.46	29"	15.96	18.96	29"	15.96	18.96
31"	7.96	8.96	8.96	31"	16.46	19.96	31"	16.46	19.96
34"	8.96	—	9.46	34"	16.96	21.96	34"	16.96	21.96
35"	9.96	—	10.46	35"	17.96	22.96	35"	17.96	22.96
36"	9.96	9.96	10.96	36"	18.96	23.96	36"	18.96	23.96
43"	10.96	—	12.96	43"	19.96	27.96	43"	19.96	27.96
46"	11.96	—	13.96	46"	21.96	29.96	46"	21.96	29.96
47"	12.96	11.96	13.96	47"	22.46	31.96	47"	22.46	31.96
48"	13.96	—	14.96	48"	24.96	32.96	48"	24.96	32.96
60"	14.96	—	15.96	60"	28.96	39.96	60"	28.96	39.96
72"	16.96	—	17.96	72"	32.96	47.96	72"	32.96	47.96

VERTICAL BLINDS WHITE OR ALABASTER **\$39**

72" x 84" \$49
78" x 84" \$56
84" x 84" \$64
104" x 84" \$76

SUSPENDED CEILING GRIDS ALSO AVAILABLE. CHOOSE FROM BLACK OR WHITE.

6 FOOT WIDE DAYTONA CARPET TURF **88¢** L.F.
12 FOOT WIDE... 1.76 L.F.

6 FOOT WIDE MALIBU **174** L.F.
12 FOOT WIDE... 3.48 L.F.

6 FOOT WIDE NEWPORT **157** L.F.
12 FOOT WIDE... 3.14 L.F.

• Available in 6 ft. or 12 ft. widths.
• This is durable, stain resistant turf carpet with all weather backing.
• Roll out the savings!

12' WIDE STATE STREET PADDED CARPET **375** SQ. YD.
\$5 L.F.

Attached cushion back.
Easy to install.

BROADWAY 7.02 L.F. 527 SQ. YD.	FIFTH AVENUE 7.41 L.F. 556 SQ. YD.	BEVERLY HILLS 6.61 L.F. 496 SQ. YD.
--	--	---

Special Purchase

• 100% continuous filament nylon.
• Attached cushion back.
• 5 year limited mfg. warranty.
• Stain resistant, easy care.

• 100% continuous filament nylon.
• Attached cushion back.
• 5 year warranty.
• Heat set yarn for longer life.
• Stain resistant, easy care.
• Resists matting, crushing and wear.

COLOR IT... SAVINGS!

Thompson's WATERSEAL STAIN
WATERSEAL STAINS SOLID OR SEMI-TRANSPARENT
YOUR CHOICE: **1066** GALLON

Thompson's "Water Seal" stains are available in either solid or semi-transparent colors.
Contains Thompson's special waterproofing formula.
Many colors to choose from.

MINWAX POLYSHADES **597** QUART
Stain and polyurethane in one easy step.
Six shades to choose from.
Glass or stain finish.
Enhances wood's natural beauty.

BUILDERS BEST FLOOR & PATIO ENAMEL **722** GALLON
Use on wood, concrete, primed metal and asphalt tile.
Not affected by grease, oil or acid.
Weather resistant Easy snap and water clean up.
Several colors to choose from.

Glidden ENDURANCE LATEX HOUSE PAINT **996** GALLON
Use over paint or stain.
Durable, self cleaning acrylic flat latex paint.
For exterior surfaces.
No special primer required over sound, previously painted surfaces.

Glidden SPRED LO-LUSTRE **968** GALLON
Durable, ideal for all types of interior wall and trim surfaces.
Washable finish is perfect for kitchen, bath, family rooms.
Series 3100.

PARKS ROUGH & READY LIQUID DEGLOSSER **773** GALLON
Sandpaper substitute cleans and dulls old surfaces to bond new finishes.
1 Gallon.

PARKS PRO-STRIPPER **944** GALLON
Water washable semi-paste paint and finish remover.
Ideal for use on rounded and vertical surfaces.
No drip formula.

PARKS POLYURETHANE **1177** GALLON
Your choice satin or gloss.
A favorite clear finish which resists water, acids and alcohol.
Ideal for floors, bar tops, furniture and doors.

EZ PAINTR. EZ ROLLER **1594**

HANDI-ROLLER **\$18**

WAGNER ELECTRONIC POWER PAINTER **\$129**

Covers a 7'x10' area with 1" filling.
Fast, easy spatter-free application.
No messy paint tray to clean.
Liftover paint may be returned straight to can.

AIR COMPRESSORS

INGERSOLL-RAND PRO PAINT TANK **\$78**
2 to 2 1/2 gallon capacity.
Includes combination carrying and ladder handle 10 feet each of both air hose and paint hose.
One-piece seamless construction of heavy-gauge steel.
Full-size opening for easy filling.

1/2 H.P. COMPRESSOR **\$79**
Completely portable for air where you need it.
Puma's rugged design is virtually maintenance-free.
Oilless design.

3/4 H.P. COMPRESSOR **\$147**
Powerful 3/4 HP tank mounted compressor delivers ample air.
7 1/2 gallon tank.
Full automatic pressure switch.

2 H.P.-20 GALLON COMPRESSOR **\$338**
High performance portable power source.
Efficient fan design for maximum airflow.
Includes 15 hose and air chuck with convenient storage rack.
Heavy duty motor for dependability and long life.

5 H.P. 60 GALLON VERTICAL COMPRESSOR **\$493**
Vertical stationary compressor for workshops and industry.
60 gallon tank capacity.
5 HP delivers 12.7 CFM at 90 PSI.
Fully automatic pressure switch.
FPV-50-228.

READY-TO-FINISH FURNITURE VALUES!

TWO-DRAWER NIGHT STAND **\$44**
Ready to finish pine.
22" H x 18" W x 15" D.
Completely assembled.

SIX DRAWER LINGERIE CHEST **\$84**
Ready to finish pine.
54" H x 18" W x 15" D.
Completely assembled.
Colonial style.

FIVE-DRAWER CHEST **\$99**
Ready to finish pine.
46" H x 32" W x 18" D.
Completely assembled.

TWO-DOOR TWO-DRAWER CHEST **\$124**
Ready to finish pine.
22" H x 36" W x 18" D.
Fully assembled.

WARDROBE CHEST **\$139**
Ready to finish pine.
66" H x 36" W x 18" D.
Fully assembled.
5 Drawers plus closet.
Colonial style.



LET US INSTALL IT FOR YOU!

1-YEAR GUARANTEE ON LABOR



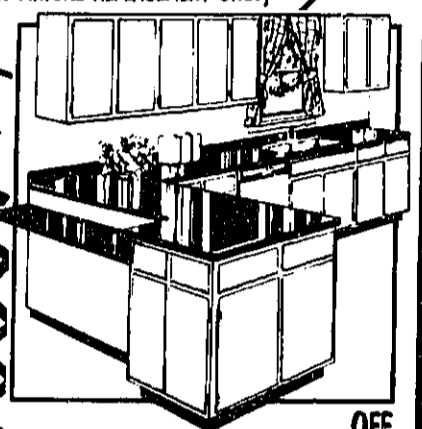
16x6' #2 CEDAR FENCING WITH TREATED POSTS & RAILS

965 PER LINEAR FOOT

JOB CODE 0103

WE'LL INSTALL ANY CEILING FAN LABOR ONLY

\$33 (LIGHT FIXTURE REPLACEMENT ONLY)



American Woodmark Cabinets 10% OFF LABOR ONLY

LET US INSTALL YOUR CARPETING AND FLOORING



GIVE YOURSELF A BREAK AND LET OUR EXPERTS INSTALL IT FOR YOU!

WE INSTALL! Chain link fencing, wood fencing, exterior doors, interior doors, blown-in insulation, continuous gutting, garage door openers, water heaters, toilets, garbage disposers, vanities, ceiling fans, security lights, light fixtures... AND MUCH, MUCH MORE!

CALL OR COME BY FOR A FREE ESTIMATE!



8'x6' WOODEN STORAGE BARN \$449

JOB CODE 0122

4 FOOT CHAIN LINK FENCE 319 PER LINEAR FOOT

TOILET INSTALLATION REPLACEMENT ONLY \$45 LABOR ONLY



5 FOOT FENCE 381 PER LINEAR FOOT

LET US INSTALL YOUR NEW TUB ENCLOSURE \$49 LABOR ONLY

DO-IT-YOURSELF GARAGE DOOR OPENER SPECIALS

1/3 HP GARAGE DOOR OPENER \$123

1/2 HP GARAGE DOOR OPENER \$139

1/2 HP GARAGE DOOR OPENER \$169

1/3 HP SCREW DRIVE GARAGE DOOR OPENER \$145

FREE! OPENER ACCESSORIES FROM STANLEY

1/4 HP GARAGE DOOR OPENER \$96

8'x7' RAISED PANEL STEEL GARAGE DOOR \$175

8'x7' WOOD PANEL GARAGE DOOR \$119

STANLEY GARAGE DOOR ACCESSORIES

TOP ROLLER BRACKET 372	GARAGE DOOR HINGE 348	DOOR ROLLER 491
T-HANDLE WITH KEY 876	SAFETY CABLE 930	HEAVY DUTY SPRINGS 1531
DIGITAL TRANSMITTER 3287	TWO BUTTON DIGITAL TRANSMITTER 3650	DIGITAL KEYLESS ENTRY 3788
KEY SWITCH 1064		

EVERYTHING YOU NEED FOR YOUR UNDERGROUND LAWN SPRINKLER SYSTEM

PATIO DRIP WATERING SYSTEM KIT 788

- Ideal for small patios, balconies, decks and containers.
- All the components needed to water 7 plants, 5 emitters, 2 mist heads, & 75 feet of tubing.

RAIN BIRD POP-UP IMPULSE SPRINKLER 859

LOW OR MEDIUM GALLONAGE

YOUR CHOICE #1B3 or #M64

- Low gallonage flow. Especially recommended for low pressure areas. Spacing from 25 to 43 feet apart.
- Medium gallonage flow reduces sprinkling time by watering at a faster rate of flow-spacing from 25 to 46 feet apart.

DRIP WATERING STARTER SYSTEM 1476

- For gardens, patio plants, shrubs & more.
- Waters up to 26 plants.
- 20 emitters, 6 mist heads, & 100 feet of tubing.

GARDEN DRIP WATERING SYSTEM KIT 1767

- Complete system for watering gardens up to 225 square feet.
- Includes emitters, soaker tubing & 40 of 1/2" poly tubing.
- Can be disassembled & redesigned.
- Easy to expand & automate.

LAWN GENIE 4 STATION AUTOMATIC TIMER 2950

- Waters up to 4 zones.
- Easy to operate.
- Automatic pump start.
- Transformer included, safe low voltage design #304ALG.

3/4 INCH MANUAL ANGLE VALVES 247

1" VALVE... 3.37

- Valve turns on sprinkler with a turn of the handle.
- Connects easily to supply line.
- Rugged, corrosion-resistant design.

PVC PIPE 98¢

3/4" x 10' PVC pipe schedule 40 1.45

PLASTIC FLUSH SPRINKLER HEAD 18¢

Full, half, or quarter pattern

- Durable, non-corrosive plastic sprinkler head and nozzle.

BRASS POP-UP HEAD 125

- Solid brass construction - solid brass insert nozzle.
- 1/2" female iron pipe thread inlet.
- Brass flow adjustment screw.
- Rise 1 3/4" above the soil level.
- Your choice of 5 spray patterns.

BLACK BIRD IMPULSE SPRINKLER 217

- Full or part circle coverage up to 62-foot diameter.
- Durable, high-impact plastic and stainless steel construction.
- Distinctive dial allows easy adjustment.
- P.T. spray guide arm controls stream, prevents side splash, saves water.

RAIN BIRD BRASS IMPULSE SPRINKLER 863

Full or part circle coverage up to 62 foot diameter

- Brass, bronze & stainless steel available.
- Adjustable deflector controls stream, prevents side splash, saves water.

SAVE ON FAMOUS BRAND POOL CARE SPECIALS!

HTH ALGAEICIDE 394

CONTROLS ALGAE GROWTH

16 GALLON

- Controls black and green algae growth

PACE CONCENTRATED CHLORINATED TABLETS \$43

16 LBS.

MURIATIC ACID 144

1-Gallon

- Helps keep your pool clean.
- Resists mold & mildew build-up.

POOL DOCTOR FLOATING BABY SEAT 896

- Made of unsinkable polystyrene and designed to be tip resistant.
- Cotton seat needs no adjustment.

HTH CLARIFIER 286

- Clears cloudy, dull water.
- Quart size.
- Controlled stain and scale.

TRANS CHEM DIATOMACEOUS EARTH 597

NET WT. 45 LBS.

SUNDRIFT LOUNGE 1688

18'x36' POOL COVER \$159

- Ready to paint for lumber framework with 1/4" hardboard panels.
- Steel ball bearing rollers.
- Security locking latch.

HTH SOCK-IT SEASONAL 788

5.5 LB.

- Controls algae.
- Kills bacteria.
- Destroys organic contaminants.

VACUUM HOSE 2444

- Heavy-duty long lasting vacuum hose.



AMERICA'S FAVORITE HOME IMPROVEMENT WAREHOUSE!

POWER

BIGGEST SELECTION IN TOWN!

TOOLS!

- MAKITA
- BLACK & DECKER
- MILWAUKEE
- BUILDER'S BEST

BLACK & DECKER QUALITY POWER TOOLS FOR THE CRAFTSMAN

#7391

7 1/4" CIRCULAR SAW

WITH METAL BLADE GUARDS

- A heavy duty performer with 2-1/8 H.P.
- 5300 RPM, motor, metal blade guards, steel wrap-around shoe and permanently lubricated sleeve bearing.
- 10 amp. #7391.

\$36

NEW SAW BLADES FROM:

BLACK & DECKER

Piranha

7 1/4" 18 Carbide Teeth

Piranha CARBIDE TOOTH

CARBIDE TOOTH SAW BLADE

UNIQUE CURVED CARBIDE TOOTH	RESHARPENABLE CARBIDE TEETH	EXTREMELY SHARP CUTTING EDGE	PRECISION GROUND SURFACE
EXCLUSIVE "FISH HOOK" GULLET	PRECISELY BALANCED	INDUSTRIAL GRADE CARBIDE TIPS	RECESSED NON-CUTTING EDGE

7 1/4" 18 CARBIDE TEETH CIRCULAR SAW BLADE

\$5.28

CHECK THESE PRICES!

7 1/4" 18 CARBIDE TOOTH UNPACKAGED #63-717	4.98
7 1/4" 24 CARBIDE TOOTH #73-737	6.96
7 1/4" 40 CARBIDE TOOTH #73-757	12.97
9" 30 CARBIDE TOOTH #73-739	13.96
9" 60 CARBIDE TOOTH #73-769	29.94

MAKITA INDUSTRIAL QUALITY POWER TOOLS

FINISHING SANDER

OUR LOW PRICE **\$39**

LESS MFR. REBATE **\$5**

YOUR FINAL COST AFTER REBATE **\$34**

Limit 3 rebates per household

• The square design allows flush sanding on all sides for reaching corners.

#901

DUAL ACTION FINISHING SANDER

OUR LOW PRICE **\$44**

LESS MFR. REBATE **\$5**

YOUR FINAL COST AFTER REBATE **\$39**

Limit 3 rebates per household

• For optimum sanding versatility, this sander combines both straight and orbital sanding action for fine finishing or general stock removal.

#903

4" SANDER-GRINDER KIT

WITH TOOLCASE

OUR LOW PRICE **\$57**

LESS MFR. REBATE **\$5**

YOUR FINAL COST AFTER REBATE **\$52**

Limit 3 rebates per household

• Versatile sander-grinder kit

• Fast efficient sanding, grinding, cutting and deburring.

#902

3/8" CORDLESS DRILL

OUR LOW PRICE **\$39**

LESS MFR. REBATE **\$5**

YOUR FINAL COST AFTER REBATE **\$34**

Limit 3 rebates per household

• 2.1 lb., lightweight compact

• Drills up to 3/8" in wood and steel

• Built-in battery recharges in 3 hours; recharger included

• Flipping switch for removing screws, bit.

#904

3/4 HP ROUTER WITH TOOLCASE

OUR LOW PRICE **\$76**

LESS MFR. REBATE **\$5**

YOUR FINAL COST AFTER REBATE **\$71**

Limit 3 rebates per household

• This lightweight router is easy to maneuver for creating decorative edges, building drawers and cabinets, and many more woodworking uses.

#905

MILWAUKEE PREFERRED BY PROFESSIONALS

3/8" DRILL

\$89

• Trigger speed control and reversing switch, 3.3 amp motor, non-conductive motor housing and handle.

#0224-1

HEAVY DUTY DRYWALL SCREW GUN

\$79

• Double insulated 3.5 amps

• Positive drive clutch

• Convenient reversing switch

• Minimum offset for close quarter work

#6733-1

2-SPEED SAWZALL

\$115

• 4-AMP, 120 Volt.

• Plunge cuts in wood & other resilient stock. No starting hole required.

#6511

1/3 HP BENCH GRINDER

\$119

#4955

HEAVY DUTY JIGSAW

\$119

• Single speed.

• Paddle switch for right or left hand use.

#6265

8 1/4" CIRCULAR SAW

\$119

#405

BELT SANDER

\$219

• 4"x24", 10 amp, 120 volts.

• Belt-drive minimizes gear maintenance

#5990

FOR YOUR CONVENIENCE OUR STORE HOURS ARE:
 MON.-SAT.: 7:30am-9:00pm SUN.: 9:00am-6:00pm

LOWEST PRICES GUARANTEED!

We guarantee the lowest price on every item everyday! And, if you find a lower price at a competitor (Heaven forbid) just let us know and we'll change it plus we'll give you 10% more in SQUARE BUCKS for your next purchase (identical items only (same manufacturer and model number). Offer limited to items in stock. No rain checks. Price comparison are at time of purchase. We reserve the right to limit quantities to dealers and competitors.

Accepted: VISA, M.C., Discover, American Express

OUR NEW STORE IS:

IN LIVONIA
 30000 PLYMOUTH RD. AT MIDDLEBELT RD.
 ACROSS FROM WONDERLAND MALL
 1 MILE SOUTH OF I-96

522-2900

©1987 BUILDERS SQUARE, INC. ALSO FOR YOUR CONVENIENCE, WE'RE LOCATED AT:

MT. CLEMENS 37555 S. GRATIOT 1 BLK. N. OF METRO PKWY. 468-0620	FLINT G 3603 MILLER RD. AT I-75 733-7582	STERLING HEIGHTS 12000 HALL RD. M59 AT M53 254-4640	SOUTHGATE 14800 DIX-TOLEDO RD. AT EUREKA RD. 246-8500	8400 E. 8 MILE (BASELINE) BETWEEN VAN DYKE (53) & HOOVER RD. IN THE OLD BEL-AIR DRIVE IN 893-4900
--	--	---	---	---

Map showing store location at the intersection of Plymouth Road and Middlebelt Road, south of I-96.

Herman's
WORLD OF SPORTING GOODS

we are
sports

SALE

WE WELCOME THE
AMERICAN EXPRESS CARD



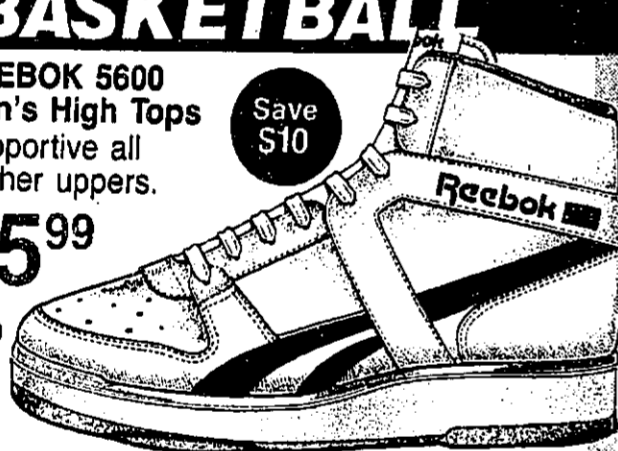
Sale now through May 9, 1987.

BASKETBALL

REEBOK 5600
Men's High Tops
Supportive all
leather uppers.

Save
\$10

45.99
reg. 55.99



Save
\$7

**CONVERSE Men's
Spectre Low Tops**
24.99 reg. 31.99
Durable leather uppers
with rubber sole.



Save
\$8

**CONVERSE Men's
Spectre High Tops**
26.99 reg. 34.99
Leather construction;
extensive padding.



Save
\$7

NEW BALANCE 492
for men
42.99 reg. 48.99
Ankle-supporting
leather high tops.



Save
\$10

**NIKE Men's
Air Pro**
54.99 reg. 64.99
All leather; super
comfortable Air® sole.



TENNIS

Save
\$5

**ADIDAS Court Point
or Silver Court**
31.99 reg. 36.99
Soft leather uppers;
men's and women's.



Save
\$5

**PRINCE Spectrum
for men**
34.99 reg. 39.99
All leather uppers;
tough rubber sole.



Save
\$7

**AVIA 745
for men**
39.99 reg. 46.99
Patented cantilever
sole; leather uppers.



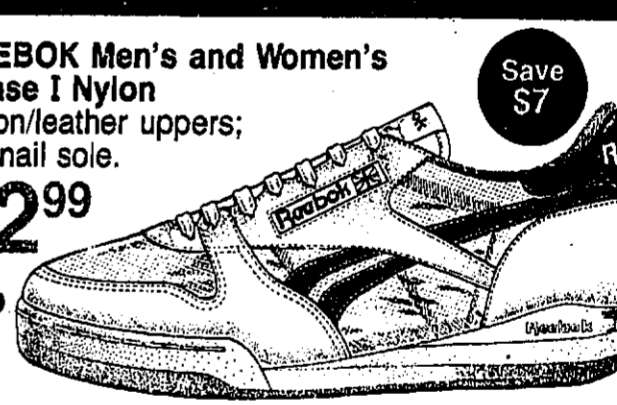
Save
\$7

**REEBOK RTP for
men and women**
48.99 reg. 55.99
No-break-in soft
leather uppers.



**REEBOK Men's and Women's
Phase I Nylon
Nylon/leather uppers;
hobnail sole.**

32.99
reg. 39.99



Save
\$7

RUNNING

**ADIDAS Silver Star
for men**
Extended heel counter
for extra support.

36.99
orig. 56.99



Save
\$20

Save
\$5

**CONVERSE RS 2
for men and women**
19.99 reg. 24.99
Lightweight nylon;
all-surface sole.



Save
\$7

**REEBOK Classic
for men and women**
42.99 reg. 49.99
Supple leather uppers;
long-wearing sole.



Save
\$8

**REEBOK ACT Jr.
Tennis Shoes**
29.99 reg. 37.99
Soft leather uppers;
hobnail rubber sole.



Save
\$5

**REEBOK 4600 Jr.
Basketball Shoes**
34.99 reg. 39.99
All leather high tops;
great ankle support.



FITNESS

Save
\$8

**REEBOK Women's
Freestyle Low**
34.99 reg. 42.99
Garment leather;
comfortable padding.



Save
\$7

**REEBOK Women's
Freestyle High**
42.99 reg. 49.99
Non-slip sole;
supple leather uppers.



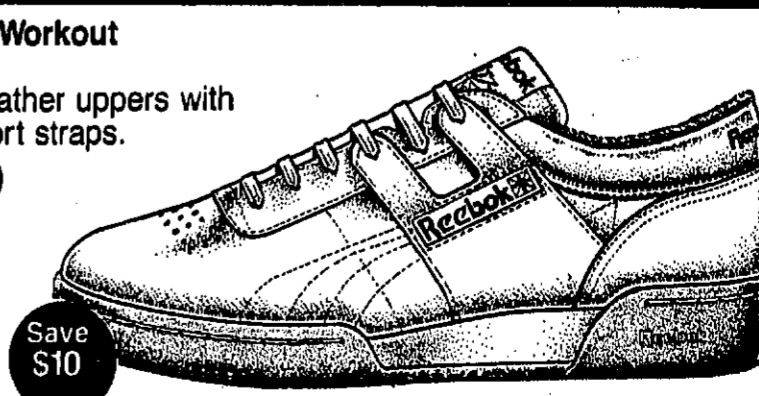
Save
\$7

**REEBOK Ex-O-Fit
Men's High Tops**
47.99 reg. 54.99
Finest quality leather;
performance sole.



**REEBOK Workout
for men**
Durable leather uppers with
side support straps.

39.99
reg. 49.99



Save
\$10

Herman's
WORLD OF SPORTING GOODS

RAWLINGS
Robin Yount
Fielder's Glove
37⁹⁹
reg. 44.99
Fine quality
leather
construction.

LOUISVILLE
SLUGGER
125 Series
Fielder's Gloves
54⁹⁹
reg. 79.99
Premium leather.
Choose your
favorite style!

WILSON
A2000
Fielder's Gloves
69⁹⁹
reg. 79.99
Power snap-
back for
better control!

NIKE MCS Slam
for men
29⁹⁹
reg. 36.99
Dynamite uppers
for durability.

NIKE Slugger
for men
19⁹⁹
reg. 24.99
Easy care uppers;
molded rubber sole.

NIKE Kids' Slugger
reg. 21.99.....**17.99**

ADIDAS Stratos JL
for kids
13⁹⁹
reg. 16.99
Durable uppers;
comfortable
molded outsole.



RAWLINGS
Dale Murphy
Fielder's Glove
16⁹⁹
reg. 19.99
Youth size.
Single open web.

WILSON
Eddie Murray
Glove
24⁹⁹
reg. 29.99
Little league or
ladies' softball.

WILSON
Roger Clemens
Fielder's Glove
32⁹⁹
reg. 39.99
Angle weave web;
laced finger slot.

SPALDING
Softball
Fielder's Glove
37⁹⁹
reg. 44.99
Great for baseball
or softball.

REGENT
T-Ball Stand
8⁹⁹
reg. 12.99
Durable plastic;
adjusts from
26" to 36".

• **LOUISVILLE SLUGGER** Warlord
Little League Bat
2 1/4" barrel dia. **9⁹⁹**
reg. 12.99

• **RAWLINGS** Beer Logo
Softball Bats
Colorful logos! **19⁹⁹**
reg. 24.99

• **LOUISVILLE SLUGGER** Warlord
Softball Bat
Top quality! **14⁹⁹**
reg. 17.99

• **EASTON** BLACK MAGIC
Softball Bat
Weighted for
extra power! **29⁹⁹**
reg. 34.99

20% OFF
reg. prices
Entire Stock of
Bating Gloves,
Baseballs and
Softballs.

PORTER
Fiberglass
Backboard
Full size with
goal and net.
59⁹⁹
reg. 79.99

PORTER Basketball
Pole, reg. 109.99.....**99.99**

PORTER Deluxe
Fiberglass
Backboard
Full size
54" x 39" board.
99⁹⁹
reg. 124.99

SPALDING 201
Top-Flite
Basketball
16⁹⁹
reg. 19.99

WILSON Aggressor
or Aggressor 285
Basketball
24⁹⁹
reg. 29.99

MIKASA
Deluxe
Volleyball
19⁹⁹
reg. 27.99
Durable indoor/
outdoor cover.

MOLTEN
Soccer Balls
14⁹⁹
reg. 19.99
Deluxe polyurethane
cover. Sizes 4 & 5.

RAM
Golden Girl
11-Pc. Ladies'
Golf Set
229⁹⁹
reg. 260.00
3 laminated
woods; 8
cast irons.

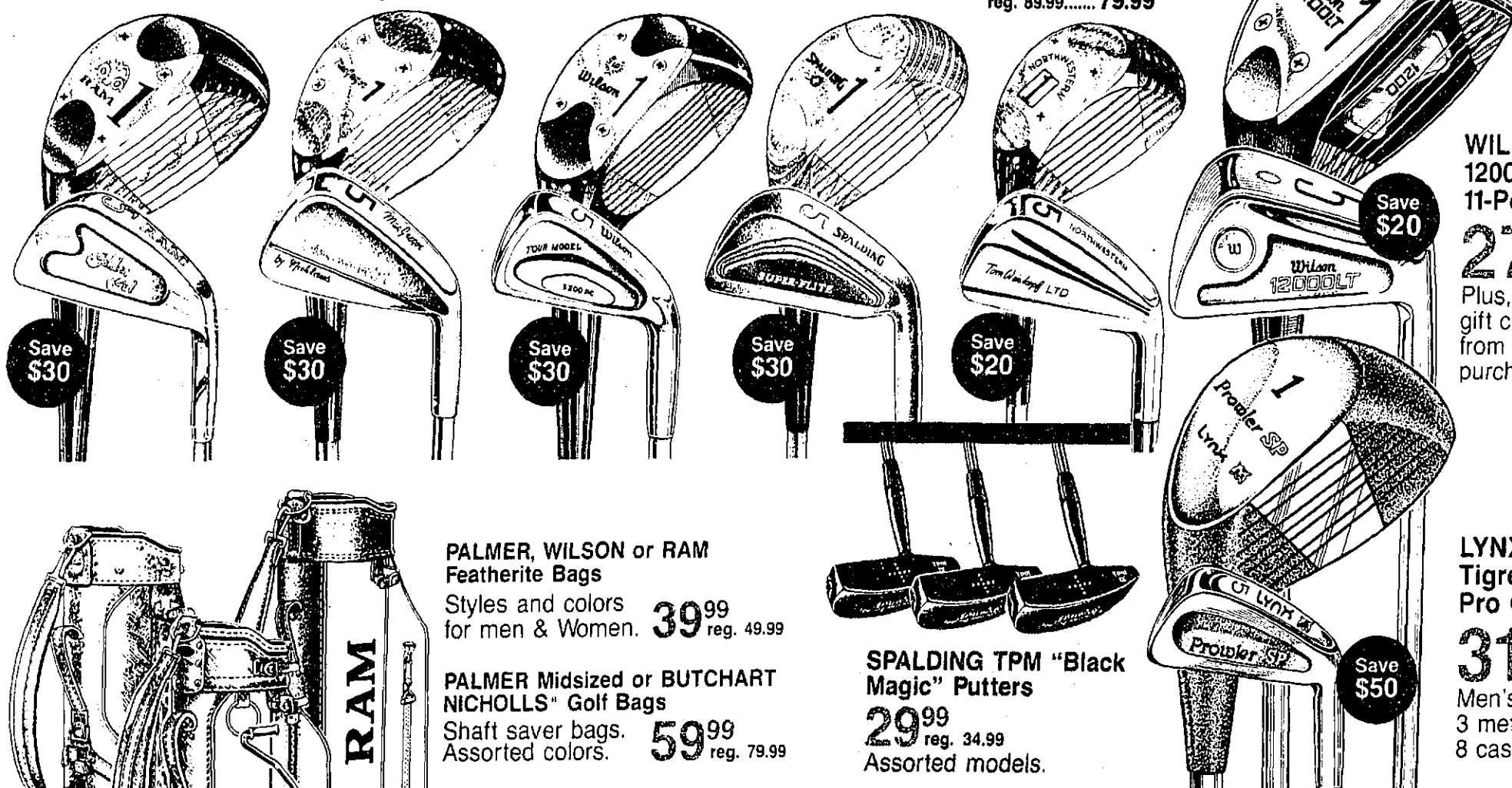
MacGREGOR
Ambassador III
Men's 11-Pc.
Golf Set
239⁹⁹
reg. 269.99
3-laminated
woods; 8 custom
cast irons.

WILSON
3200 PC
Men's 11-Pc.
Golf Set
219⁹⁹
reg. 249.99
3 woods; 8
perimeter weighted
cast irons.

SPALDING
Super-Flite
Men's 11-Pc.
Golf Set
199⁹⁹
reg. 229.99
3 woods; 8
investment
cast irons.

NORTHWESTERN
Men's or Ladies'
LTD 11-Pc.
Golf Sets
149⁹⁹
reg. 169.99
NORTHWESTERN
Tournament
7-pc. Golf Sets
reg. 89.99.....**79.99**

sale!



WILSON
1200 LT
11-Pc. Golf Set
279⁹⁹
reg. 299.99
Plus, receive a \$20
gift certificate mailed
from Herman's with
purchase of 1200 LT set!

LYNX Prowler SP or
Tigress SP 11-pc.
Pro Golf Set
319⁹⁹
reg. 369.99
Men's or ladies'
3 metal woods;
8 cast irons.

PALMER, WILSON or **RAM**
Featherite Bags
Styles and colors
for men & women. **39⁹⁹**
reg. 49.99

PALMER Midsize or **BUTCHART**
NICHOLLS Golf Bags
Shaft saver bags.
Assorted colors. **59⁹⁹**
reg. 79.99

SPALDING TPM "Black
Magic" Putters
29⁹⁹
reg. 34.99
Assorted models.

WILSON or **RAM** Deluxe
Golf Bags
Assorted styles
with travel hoods. **79⁹⁹**
reg. 99.99

BROWNING E-Z Rider
Golf Cart
44⁹⁹
reg. 54.99
Folds for
easy storage.

BUTCHART NICHOLLS
Calfskin Gloves
2 for 11⁹⁸
reg. 749 ea.
Assorted styles
and colors.

NORTHWESTERN
Graphite
Drivers
24⁹⁹
reg. 29.99
Graphite woods with
weight distribution
for accuracy.



SPALDING Super-Flite
Golf Balls
10⁹⁹
reg. 12.99
Bonus pack.

DUNLOP DPH II
Bonus Pack
12⁹⁹
reg. 14.99
15 golf balls.

PINNACLE 15-Ball
Bonus Pack
15⁹⁹
reg. 17.99
From ACUSHNET.

SPALDING Top-Flite
Plus Golf Balls
15⁹⁹
reg. 17.99
15 ball pack.

NIKE Men's Wentworth
Golf Shoes
49⁹⁹
reg. 54.99
Soft leather uppers.

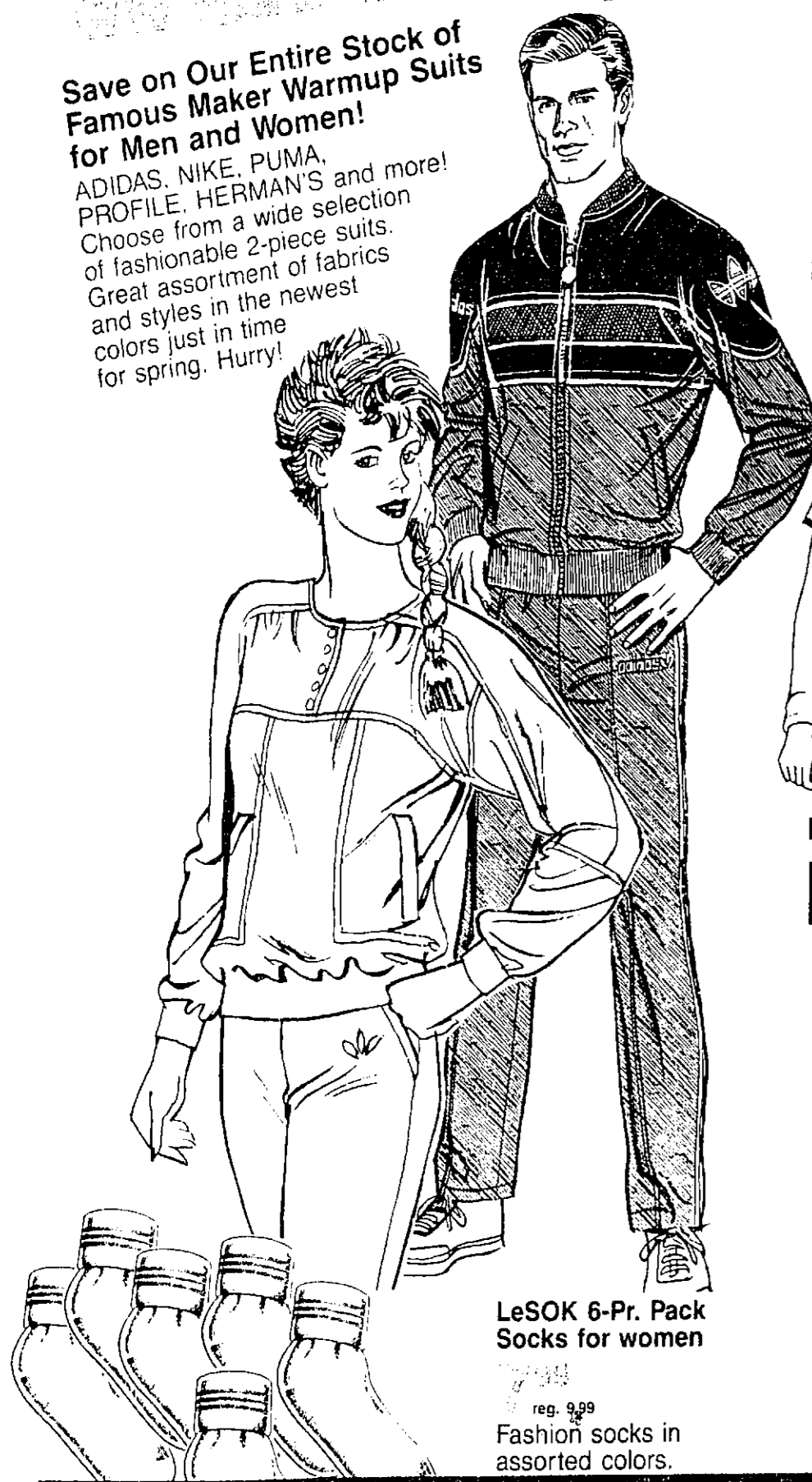
ENDICOTT JOHNSON
Men's Golf Shoes
39⁹⁹
reg. 44.99
Outside heel stabilizer.

HERMAN'S
WORLD OF SPORTING GOODS

20% TO 30% OFF Warmups

Save on Our Entire Stock of Famous Maker Warmup Suits for Men and Women!

ADIDAS, NIKE, PUMA, PROFILE, HERMAN'S and more! Choose from a wide selection of fashionable 2-piece suits. Great assortment of fabrics and styles in the newest colors just in time for spring. Hurry!



LeSOK 6-Pr. Pack Socks for women

reg. 9.99
Fashion socks in assorted colors.

SWEATS 20% TO 30% OFF

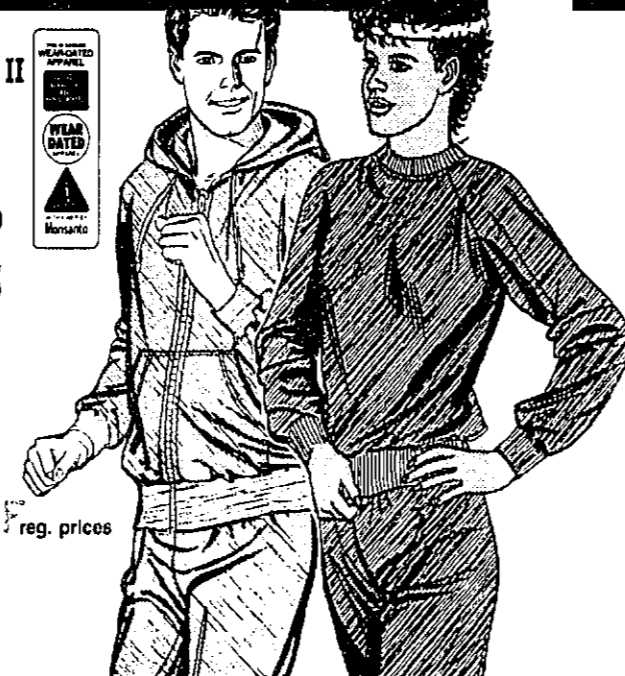
HERMAN'S Label Men's Ultra Sweats II

20% OFF
Crew Top or Pants, reg. 15.99..... 12.79
Pullover Hooded Top, reg. 18.99..... 15.19
Zip Hood Top, reg. 22.99..... 18.39

All Women's Active Sweat Separates

20% TO 30% OFF

Crew, oversized, or hooded tops; pants.



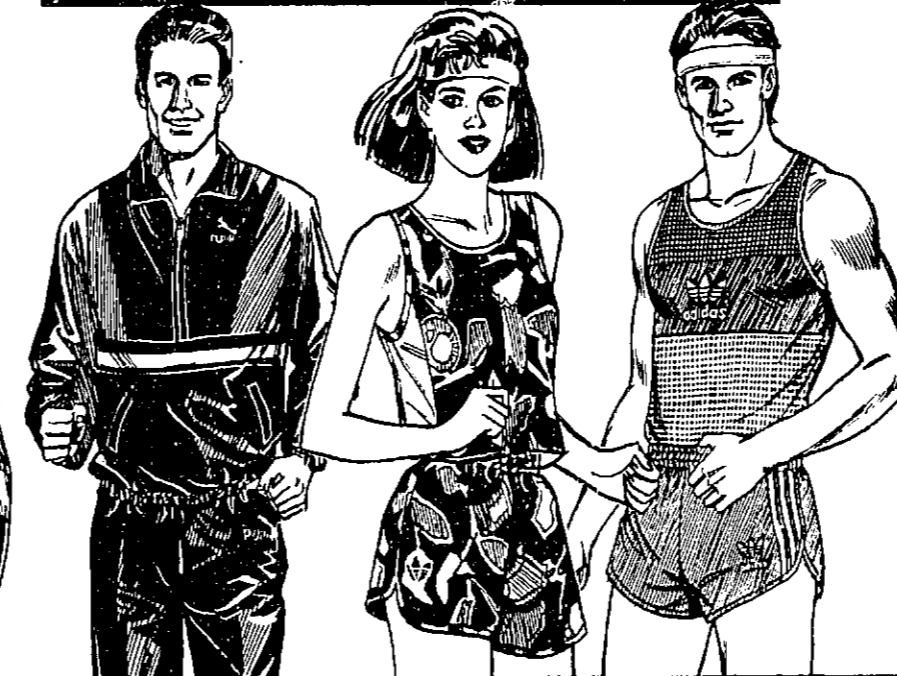
GOLF 20% OFF

Entire Stock of HERMAN'S Label Men's Separates

Shirts 14.99 orig. 18.99
Pants 19.99 orig. 24.99



RUNNING 20% OFF



PUMA Runningwear Separates for men

Nylon half-zip jacket and matching pants. 19.99 each reg. 24.99

Famous Maker Runningwear for women

Tops 10.39 TO 14.39 reg. 12.99 to 17.99

Bottoms 12.79 TO 15.99 reg. 15.99 to 19.99

ADIDAS Runningwear for men

Singlet 10.39 reg. 12.99
Shorts 11.19 reg. 13.99

sale!

ATHLETIC APPAREL

Entire Stock of STARTER Pro Satin Jackets*

Choose from these and other selected teams. Great buys! **\$10 OFF** reg. prices



20% OFF
Major League Baseball Caps*
Men's, reg. 5.99..... 4.79
Boys', reg. 4.99..... 3.99

Save 25% CHAMPION Men's Baseball T-Shirts*

9.99 reg. 13.99
Comfortable V-neck.

SPANJIAN Men's Halfback Shorts reg. 13.99..... 11.99

*May be limited to local teams.

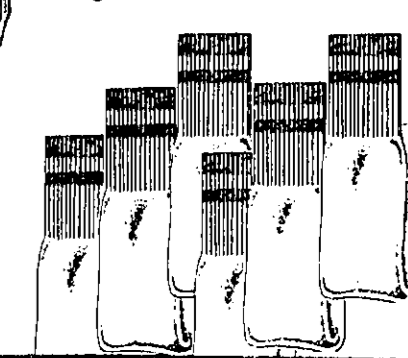
CHAMPION Men's Softball Undershirt

6.39 reg. 7.99
Lightweight, easy-care fabric.

Save 20% BIKE Nylon Mesh Schimmel Shirts

7.99 reg. 9.99
100% nylon; keyhole mesh styling.

BIKE Men's Stretch Coaches Shorts, reg. 15.99..... 13.99



SOCKSMITH 6-Pr. Pack Socks

6.99 reg. 8.99
Men's tube or crew; Boys' tube.

TENNIS 20%-30% OFF



ADIDAS Men's Selected Separates Shirts and shorts.

21.99 ea. reg. 27.99

Selected Women's Separates Tops or Bottoms

19.59 TO 22.39 ea. reg. 27.99 to 31.99

HERMAN'S Label Women's Separates

Tops 13.59 reg. 16.99
Bottoms 14.39 reg. 17.99

GYMWEAR 20% TO 25% OFF



NIKE Men's Gymwear

Tops and shorts. 14.99 ea. orig. 19.99

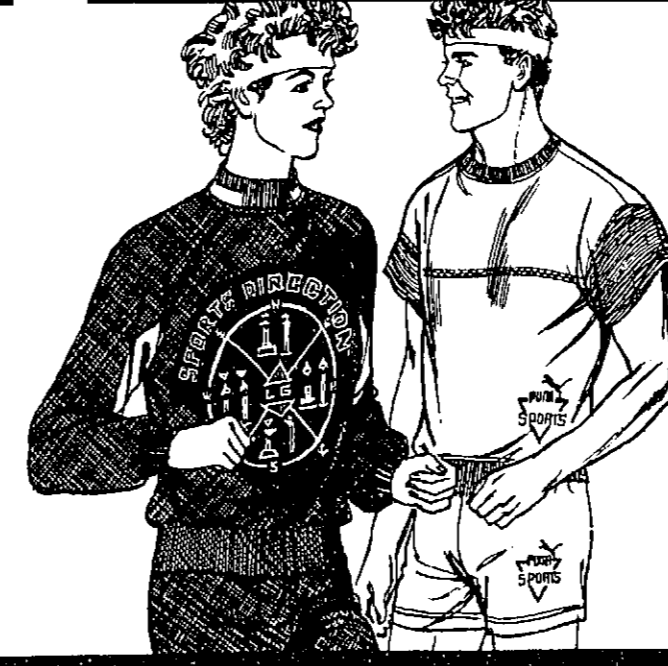
Famous Maker Women's Gymwear

Tops 10.39 TO 13.59 reg. 12.99 to 16.99

Bottoms 7.99 TO 13.59 reg. 9.99 to 16.99

Great styles now at super savings!

FLEECEWEAR 20% TO 30% OFF



Famous Maker Women's Fleecewear Great collection; assorted colors.

Tops 16.79 TO 24.49 orig. 27.99 to 34.99

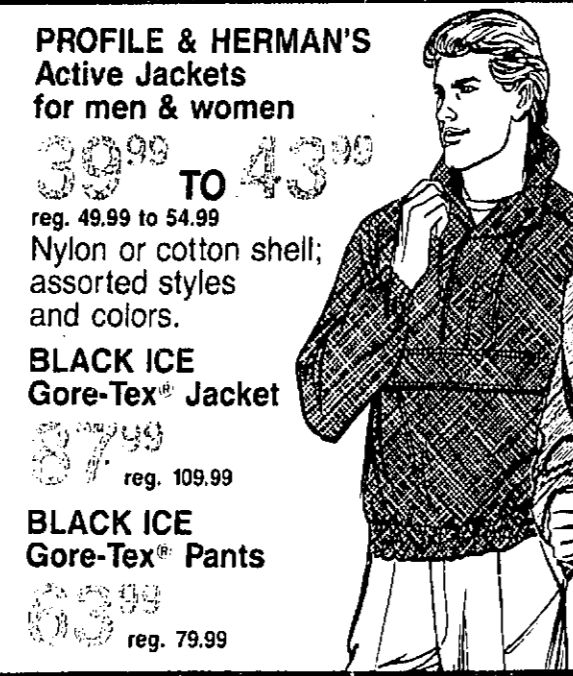
Bottoms 16.79 TO 18.19 orig. 25.99 to 27.99

PUMA Men's Fleecewear

Short sleeve tops and matching shorts.

Tops 21.99 reg. 27.99
Shorts 17.99 reg. 22.99

SPRING LIGHTWEIGHTS



PROFILE & HERMAN'S Active Jackets for men & women

39.99 TO 43.99 reg. 49.99 to 54.99
Nylon or cotton shell; assorted styles and colors.

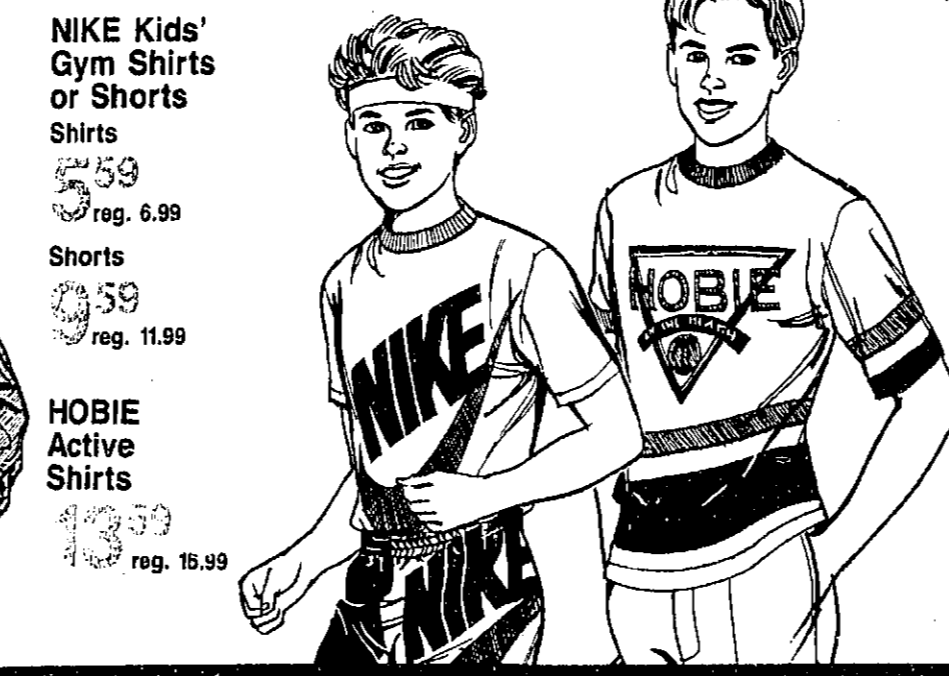
BLACK ICE Gore-Tex® Jacket

37.49 reg. 109.99

BLACK ICE Gore-Tex® Pants

63.99 reg. 79.99

KIDS...SAVE 20% OFF



NIKE Kids' Gym Shirts or Shorts

Shirts 5.59 reg. 6.99

Shorts 9.59 reg. 11.99

HOBIE Active Shirts

13.99 reg. 16.99

ACTIONWEAR 20% TO 25% OFF



NIKE & HERMAN'S Label Men's Actionwear

NIKE Fashion T-Shirts

14.99 orig. 19.99

HERMAN'S Cotton Pants

19.99 orig. 24.99

Famous Maker Women's Actionwear

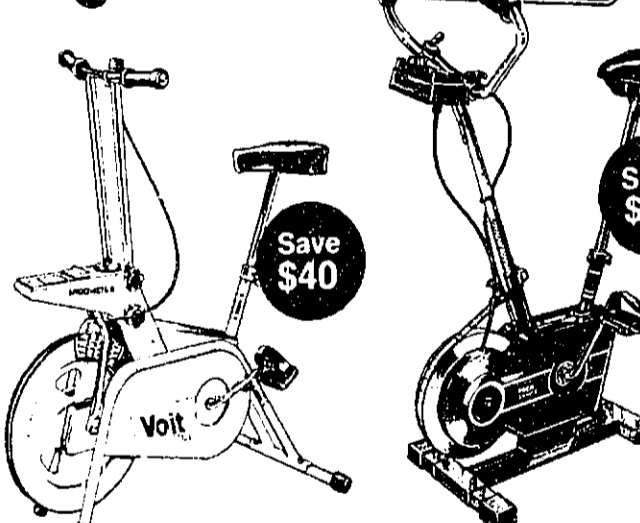
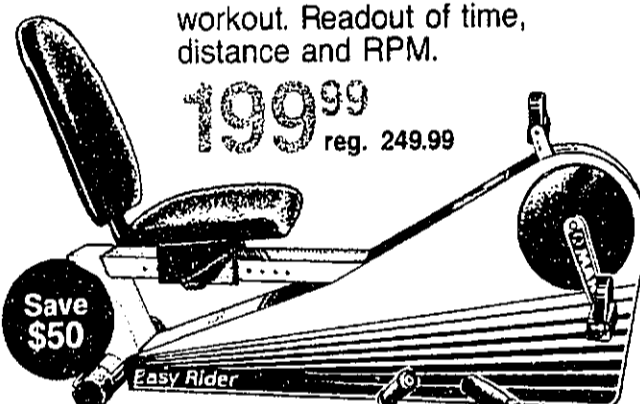
Tops 11.19 TO 19.99 orig. 13.99 to 24.99
Bottoms 11.19 TO 17.59 orig. 13.99 to 21.99

WORLD OF SPORTING GOODS

MARCY Easy Rider Recumbent Exercise Bike

Designed to provide a more efficient and comfortable workout. Readout of time, distance and RPM.

199⁹⁹
reg. 249.99

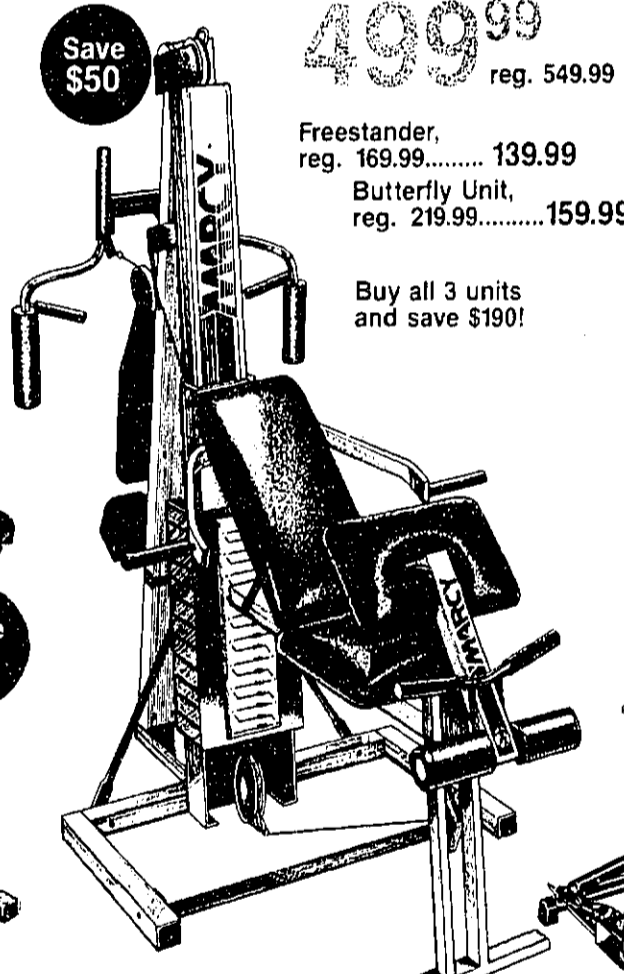


AMF Voit Ergometer Exercise Bike

159⁹⁹
reg. 199.99
Measures your energy output. Smooth ride.

MCA Flywheel Exercise Bike

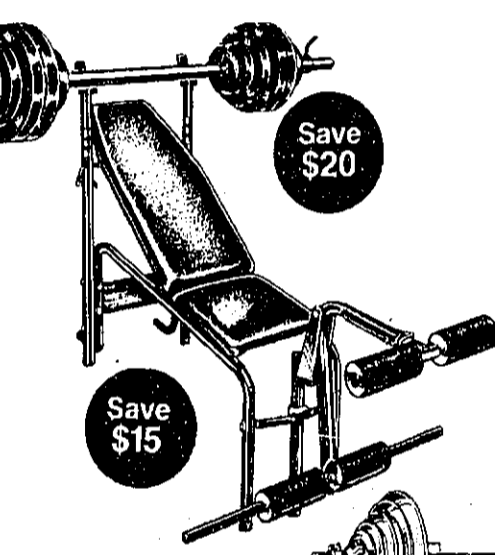
99⁹⁹
orig. 129.99
Adjustable tension. Speedometer, timer and odometer.



499⁹⁹
reg. 549.99
Freestander, reg. 169.99..... 139.99
Butterfly Unit, reg. 219.99..... 159.99
Buy all 3 units and save \$190!

EXCEL Crunchboard

24⁹⁹
reg. 29.99
Great for abdominal exercises.

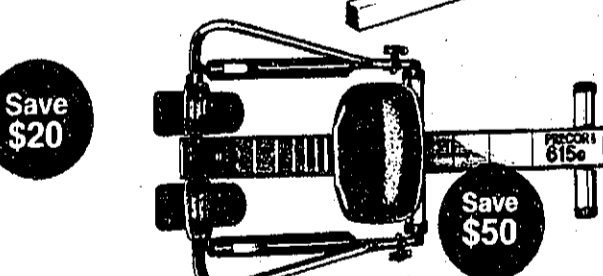


99⁹⁹
reg. 139.99
Set includes: 6' Chromed bar and 2 dumbbell bars.

129⁹⁹
reg. 159.99
4-position incline with 2-way leg lift.



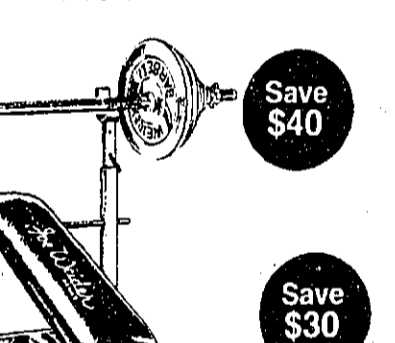
129⁹⁹
reg. 149.99
Adjustable hydraulic cylinders.



299⁹⁹
reg. 349.99
Digital readouts: time, stroke rate, more.

BILLARD 110 lb. Cast Iron Weight Set

49⁹⁹
reg. 69.99
Includes: Solid steel bar; 2 dumbbell bars.
64⁹⁹
reg. 79.99
Durable steel. Holds 550 lbs.



129⁹⁹
reg. 159.99
4-position incline with 2-way leg lift.



299⁹⁹
reg. 349.99
Digital readouts: time, stroke rate, more.



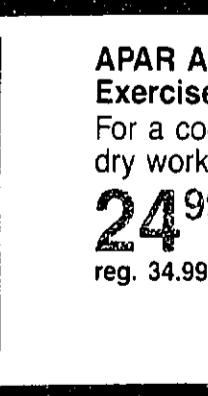
27⁹⁹
orig. 39.99
For indoor running and aerobic exercises!



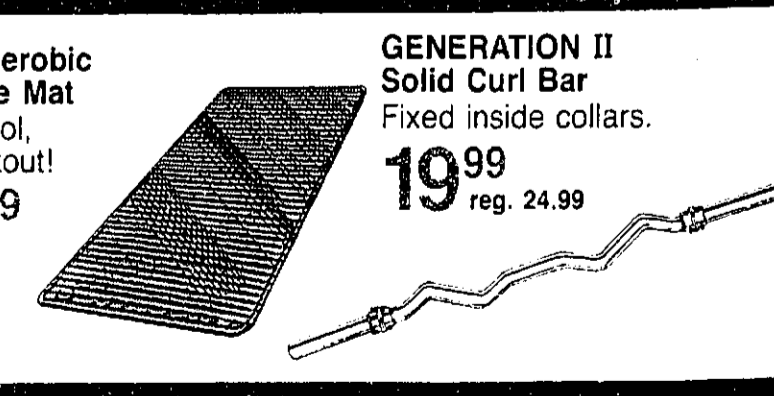
49⁹⁹
reg. 69.99
Durable for tough punches and kicks!



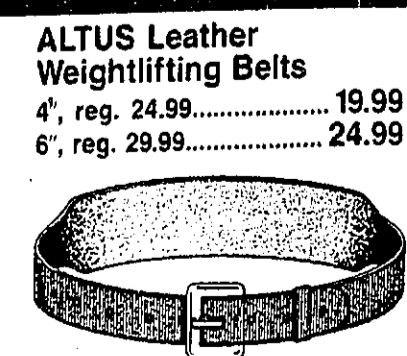
12⁹⁹
reg. 16.99
Fine quality cabretta leather.



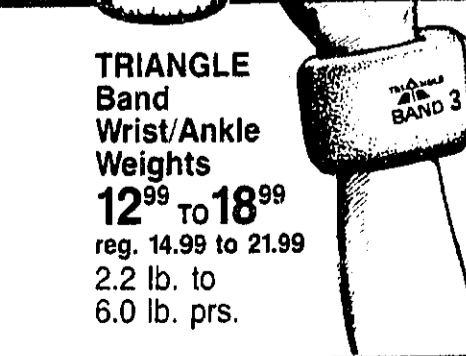
24⁹⁹
reg. 34.99
For a cool, dry workout!



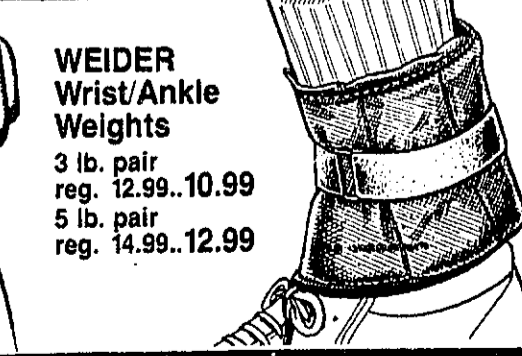
19⁹⁹
reg. 24.99
Fixed inside collars.



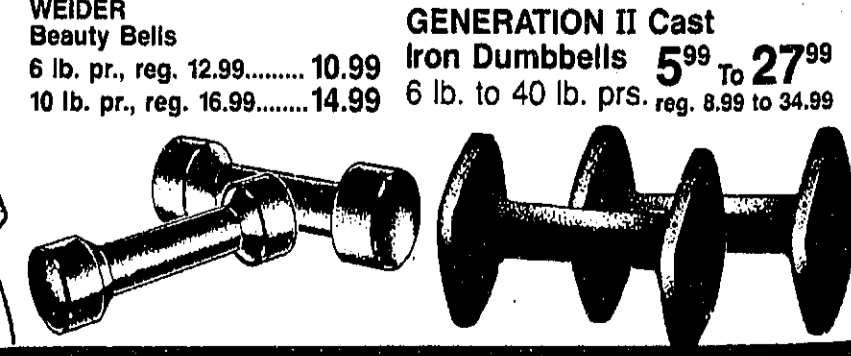
19⁹⁹
reg. 24.99
24⁹⁹
reg. 29.99



12⁹⁹ to 18⁹⁹
reg. 14.99 to 21.99
2.2 lb. to 6.0 lb. prs.



12⁹⁹ to 18⁹⁹
reg. 14.99 to 21.99
2.2 lb. to 6.0 lb. prs.

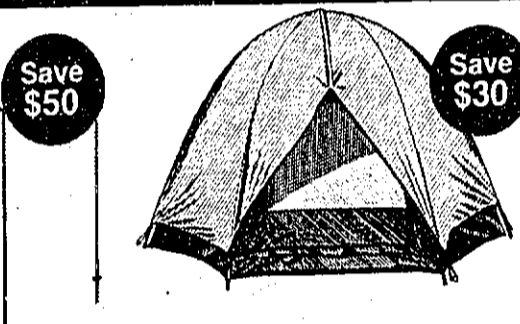


12⁹⁹ to 18⁹⁹
reg. 14.99 to 21.99
2.2 lb. to 6.0 lb. prs.

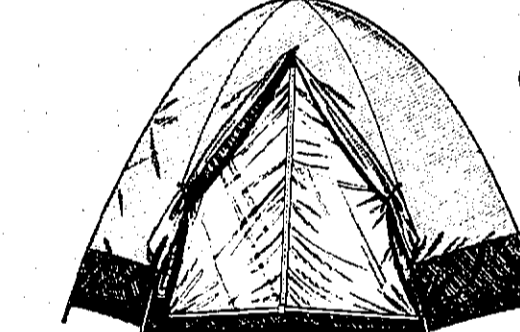
20% TO 40% OFF EVERY TENT SCREENHOUSE & CANOPY!



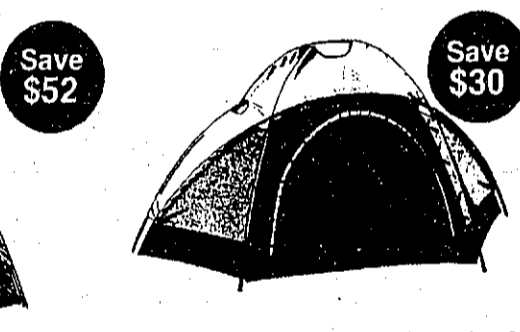
149⁹⁹
reg. 199.99
2-room tent with large inside zip windows. Big canopy.



47⁹⁹
reg. 79.99
8'x7' dome sleeps 3. Shock corded fiberglass poles.



77⁹⁹
reg. 129.99
Compact yet roomy. Inside zipped windows and screen door.

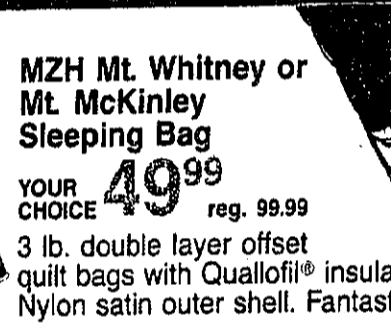


69⁹⁹
reg. 99.99
Year-round backpacker tent.

50% OFF SLEEPING BAGS

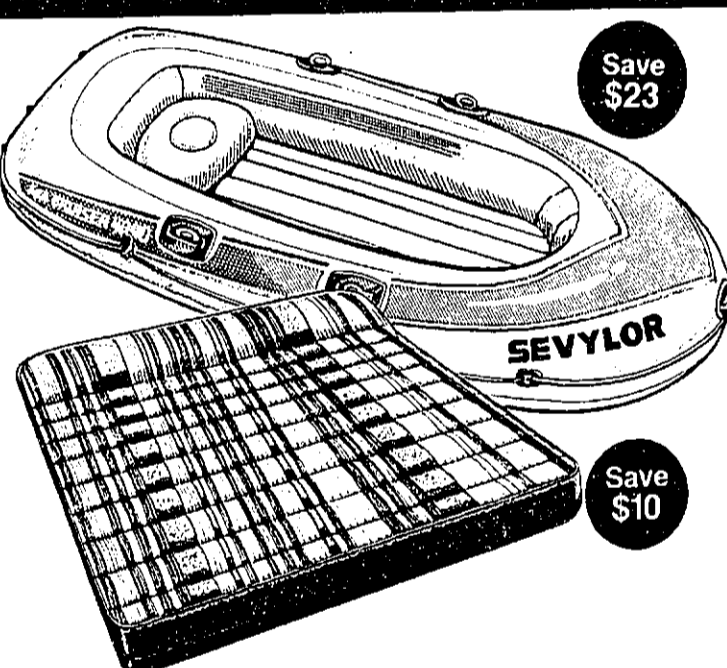


19⁹⁹
reg. 39.99
4 lb. Fortrel poly. filled



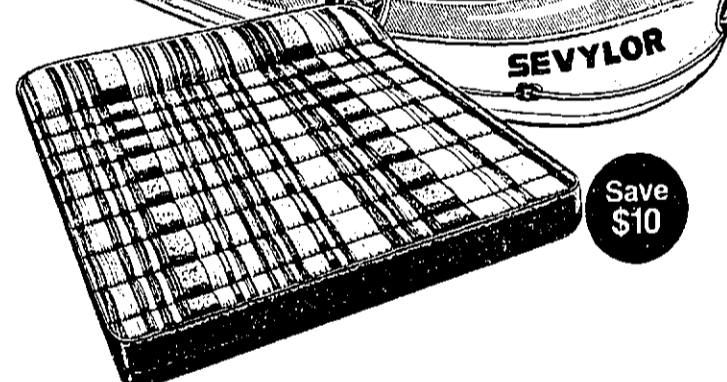
49⁹⁹
reg. 99.99
3 lb. double layer offset quilt bags with Quallofil® insulation. Nylon satin outer shell. Fantastic values!

EVERY SEVYLOR BOAT REDUCED



36⁹⁹
final cost
Reg. price 59.99. Sale price 39.99. Less \$3 mailed rebate.

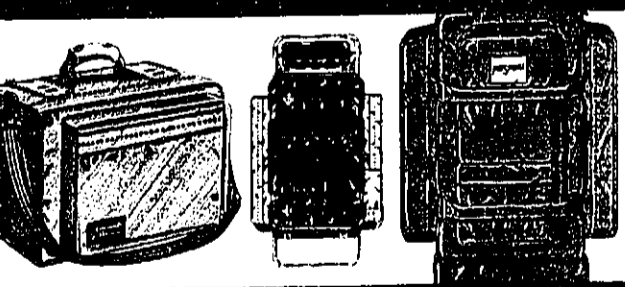
36⁹⁹
final cost
Reg. price 59.99. Sale price 39.99. Less \$3 mailed rebate.



29⁹⁹
reg. 39.99
Ideal for van, wagon or as extra bed!

29⁹⁹
reg. 39.99
Ideal for van, wagon or as extra bed!

20% OFF EVERY PACK OR DUFFLE BAG



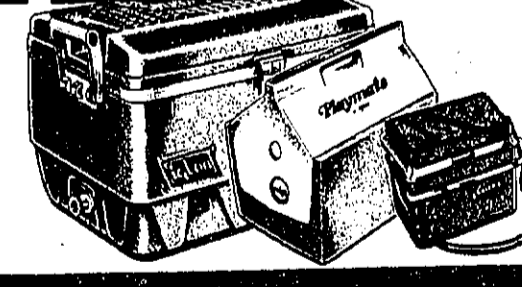
79⁹⁹
reg. 99.99
Easily converts to carry-on luggage.

20% OFF EVERY JUG & ICE CHEST



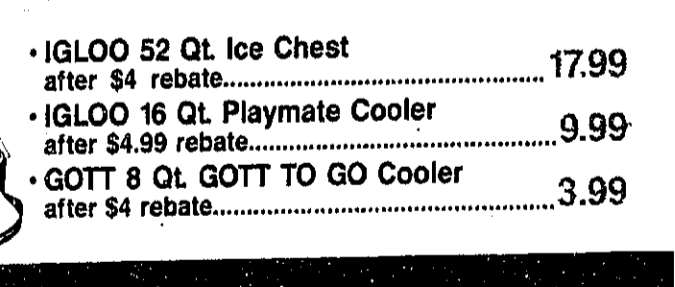
17⁹⁹
after \$4 rebate.

20% OFF EVERY JUG & ICE CHEST



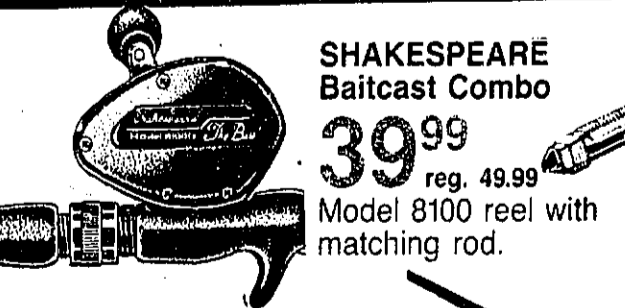
9⁹⁹
after \$4.99 rebate.

20% OFF EVERY JUG & ICE CHEST



3⁹⁹
after \$4 rebate.

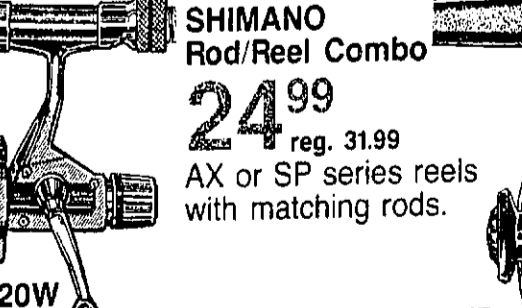
SAVE BIG ON FISHING'S BEST!



39⁹⁹
reg. 49.99
Model 8100 reel with matching rod.



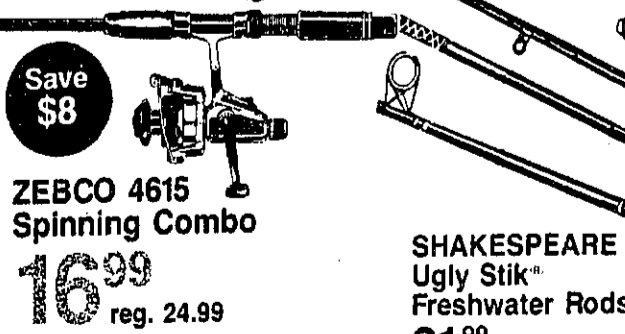
99⁹⁹
reg. 129.99



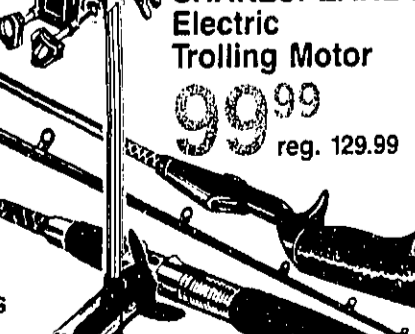
24⁹⁹
reg. 31.99
AX or SP series reels with matching rods.



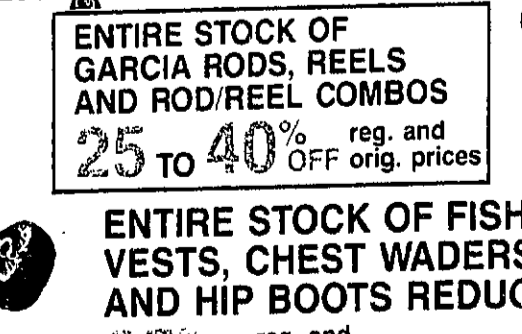
24⁹⁹
reg. 34.99
Model AG1350 reel and matching rod.



16⁹⁹
reg. 24.99
SAVE ON OTHER ZEBCO COMBOS, TOO!



31⁹⁹
reg. 39.99



25 TO 40% OFF
reg. and orig. prices



25% OFF
reg. and orig. prices



HERMAN'S TENNIS SUPER BUYS!

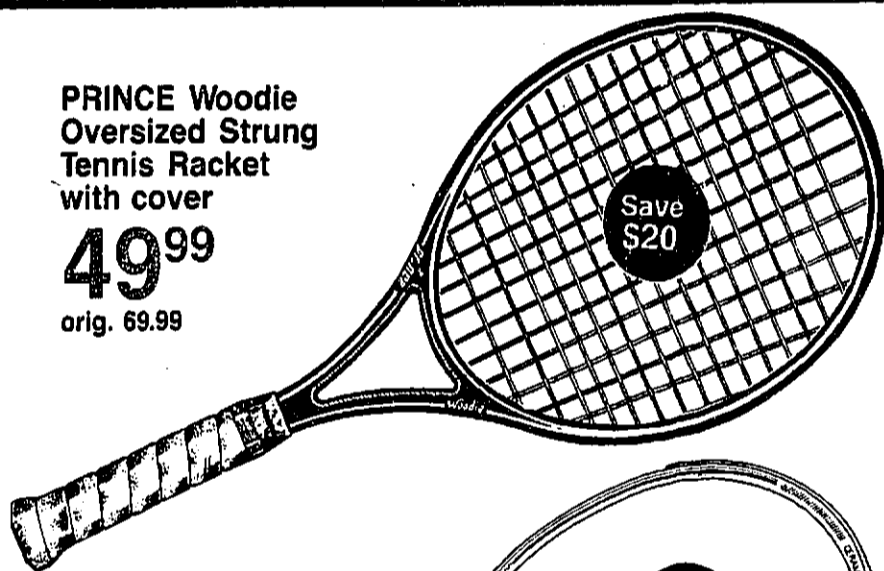
WORLD OF SPORTING GOODS

SALE

PRINCE Woodie Oversized Strung Tennis Racket with cover

49⁹⁹
orig. 69.99

Save \$20



PRINCE Graphite 110 Oversized Frame* 100% graphite fibers minimize vibration.

179⁹⁹
reg. 219.99

Save \$40



DUNLOP Max 200G Midsized Frame* Strong and stiff with minimal vibration.

99⁹⁹
reg. 119.99

Save \$20



DUNLOP Black Max Midsized Frame* Designed for optimum power and control.

69⁹⁹
reg. 89.99

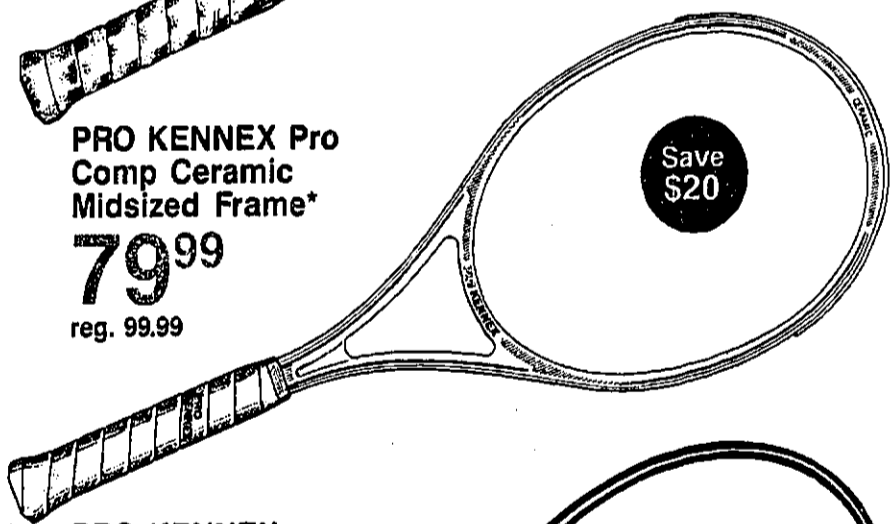
Save \$20



PRO KENNEX Pro Comp Ceramic Midsized Frame*

79⁹⁹
reg. 99.99

Save \$20



WILSON APT Comp Midsized Frame Powerful graphite composite frame.

59⁹⁹
reg. 79.99

Save \$20



WILSON Pro Matrix Midsized Frame* Lightweight, flexible graphite composite.

49⁹⁹
reg. 69.99

Save \$20



PRINCE Classic II Oversized Racket Sturdy aluminum frame comes nylon strung.

49⁹⁹
reg. 59.99

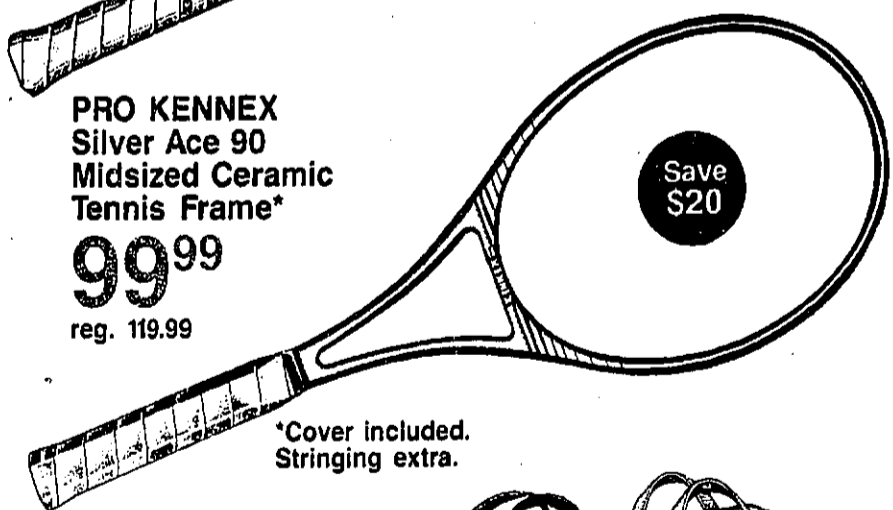
Save \$10



PRO KENNEX Silver Ace 90 Midsized Ceramic Tennis Frame*

99⁹⁹
reg. 119.99

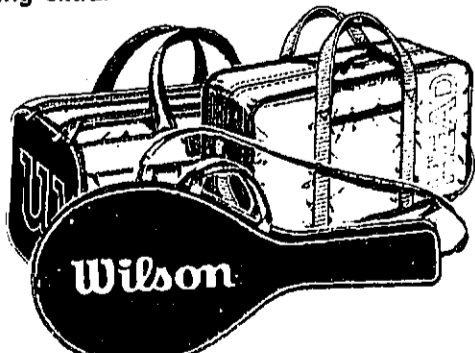
Save \$20



*Cover included. Stringing extra.

20% OFF reg. prices

Entire Stock of Racketsports Bags HEAD, WILSON, PRINCE, **ERTON** and others!



Entire Stock of Racquetball Racquets WILSON, DP, PRO KENNEX, HEAD, WILSON, **ERTON**

20% OFF reg. prices

Save 20%



WILSON APT Aluminum Rackets Mid or oversized. Strung with nylon.

29⁹⁹
reg. 34.99

Save \$5



WILSON, PENN or DUNLOP Tennis Balls

209 reg. 2.69
Limit 8 cans.



HERMAN'S COMPLETE RACKET SERVICE. Stringing, re-stringing, re-gripping and repairs.

- BIRMINGHAM: 13 Mile & Southfield Rds.
- TROY: 268 John R. Road
- SOUTHFIELD: Northland Shopping Center
- HARPER WOODS: Eastland Center

- STERLING HEIGHTS: Lakeside Mall
- TOLEDO OHIO: Talmadge Plaza
- FLINT: Genesee Valley Mall
- DEARBORN: Fairlane Town Center

- NOVI: Twelve Oaks Mall
- LANSING: Lansing Mall
- ANN ARBOR: Briarwood Mall
- WESTLAND: Westland Shopping Center
- SOUTHGATE: Dix Toledo Road

NOTE: All items may not be available at all stores. Savings reflect reductions off regular and/or original prices. Intermediate markdowns may have been taken.