

50¢

HURSDAY
August 23, 1990

Volume 35
Number 33
Four Sections
& Supplements

62

the NOVI NEWS

Opinions NO REASON TO
ISSUE OIL DRILLING PERMIT / 16A

Living WATERSKIING:
TWO PAGES OF PICTURES / 1D

Sports LOCAL MAN
COMPETES IN PGA / 11D

City (and township) to challenge census count

By JAN JEFFRES
Staff Writer

Thirty-seven percent! That's how much the City of Novi's population has exploded over the past ten years, according to preliminary reports from the U.S. Census Bureau — placing the city among some of the state's fastest-growing communities.

Fifty-nine percent! That's how much the population of one of the tiniest municipalities in Michigan, Novi Township, has plummeted, the bureau says.

The numbers lie, say officials of both communities, who plan to appeal the figures.

Preliminary figures show that Novi's population has soared from 22,252 to 30,843 and the city's housing count has jumped from 8,667 to 12,930. But Assistant City Manager Craig Klaver says that 2,000 or more people may be left out of the tally and that the city plans to appeal within the given 15-day timeframe.

"We're too low," Klaver said. "We've had lots of prob-

lems with the mail, with all these new addresses. This has been a problem historically for the last few years." The undercount was anticipated. Mayor Matthew Quinn said that city estimates are based on figures provided by the building and assessing department.

"I just had lunch the other day with a gentleman who moved into Timber Ridge six months ago and he didn't get his census in the mail," Quinn said. "We're looking at \$160 per person (in state and federal funding) per year for the next ten years."

Rather than let that \$320,000 slip by the wayside, he said that the city would seek volunteers or staff members to go door-to-door in the new subdivisions to make sure everyone filled out their census forms.

"I'd ask the city council to walk first. They don't charge anything," Quinn added.

City residents who did not return a census are encouraged to contact the city clerk's office at 347-0460. Michigan's tiniest community, according to its supervisor, is 75-acre Novi Township, which is com-

prised entirely of the 50-home Brookland Farms Subdivision at Novi and Nine Mile roads. The census bureau says that the population there has declined over the decade from 150 to 61.

Township Supervisor Ray Schovers laughed when he heard the statistics.

"That's fake. I don't know what's going on. If anything, there's more people with the number of retired two-member families moving out. I have three children under ten," he said. "We're a growing, thriving community."

Novi Township will undoubtedly appeal the headcount, he added. Eleven years ago, the township repelled the City of Novi's annexation attempt. Because the township had over 100 residents, it was granted the right by the state boundary commission to choose its own destiny.

"We stay low-profile; we'd be a tasty little tidbit for them to pick up," he added.

Anita Hackmann, wife of Novi Township treasurer

Donald Hackmann, said she had to contact the census bureau after the mailing this spring to get a form.

"I think it's (the decline) due to the fact that a lot of people didn't turn in their censuses. I talked to the mail lady. She said she had only delivered a handful of censuses back in here. She said the majority of people didn't get anything," Hackmann said.

Census bureau representatives can't comment on the tallies yet because the figures, which were first released for most communities on Monday, are preliminary.

"If it is a good challenge, the bureau will recant that particular area. They are not the final counts. They will not be used for reapportioning or redistricting purposes," said U.S. Census Bureau media specialist Harold E. Sullivan.

While the state population is down .8 percent, from 9,262,000 to 9,179,681, Oakland County's population has increased from 1,011,793 to 1,076,234.

District ready for kids

By MAUREEN NASZRADI
Staff Writer

Most students in the Novi Community School District can count this as one of their last five days of summer vacation.

Students in grades 1-12 will attend a half-day Tuesday, then start their regular schedule Wednesday. Kindergarten and preprimary impaired students will begin classes Wednesday, Aug. 29.

William Barr, associate superintendent, said district personnel will be ready for the 3,900 students to return.

"The buildings look good, the grounds look good," he said. "I think we're in terrific shape."

As in previous years, the entire district staff is invited to attend a welcome-back breakfast on Aug. 27 — the day before classes resume. Jack Minzey, a Michigan State University professor of leadership and counseling, is scheduled to deliver a motivational speech.

Following the breakfast, staff members will return to their respective schools for staff meetings, according to Rita Traynor, assistant superintendent for instruction. She said several teachers earlier this week had been in the buildings preparing their classrooms.

Meanwhile, the district is putting finishing touches on some projects.

"The high school roof is in the process of being completed," Barr said. Repairs are 95 percent complete.

Installation of playground equipment at Parkview Elementary and Novi Meadows probably will continue into the first weeks of the school year, Barr said.

The Parkview parking lot is just

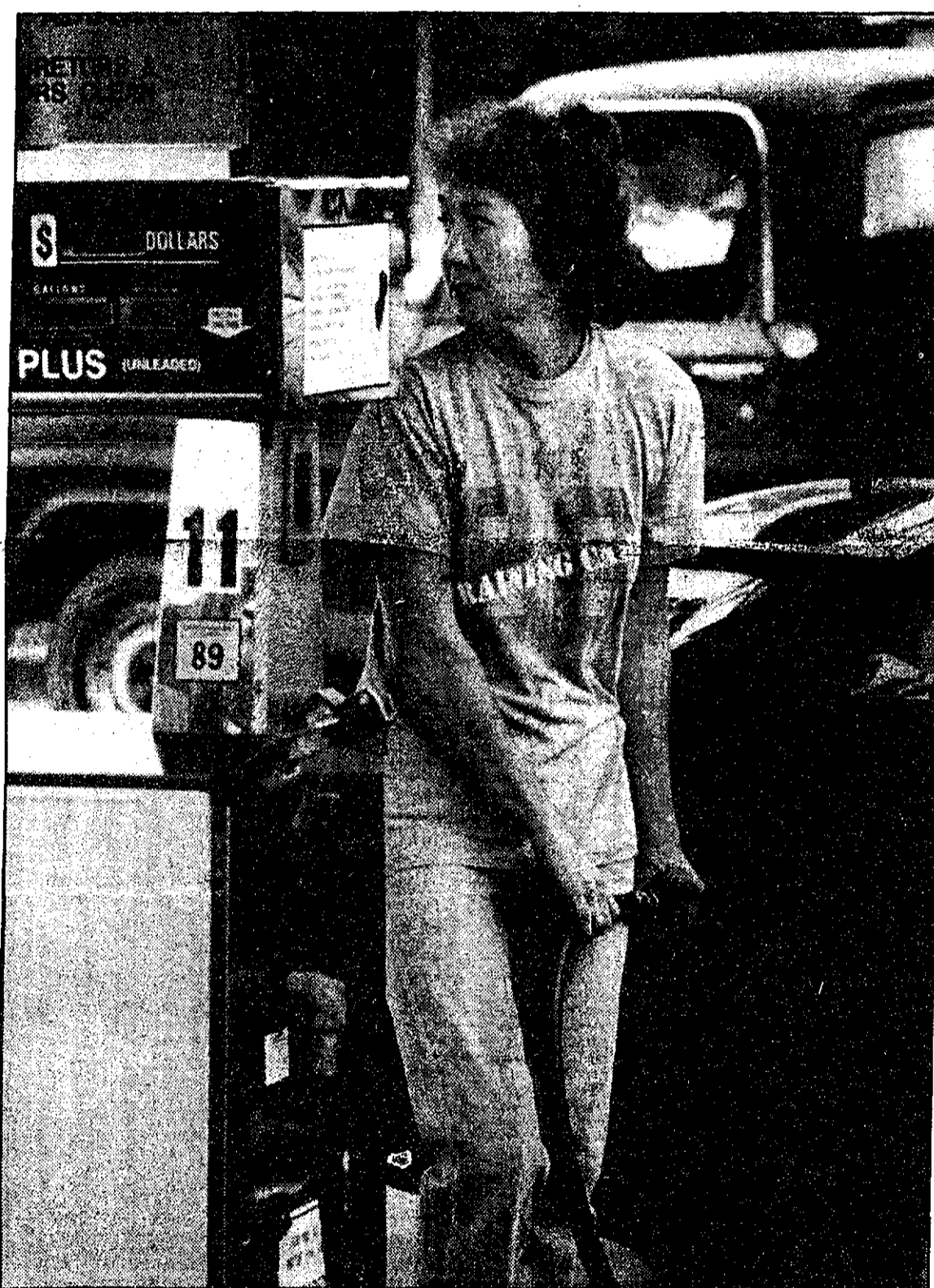


Photo by Bryan Mitchell

No choice

Residents of Novi, along with the rest of the country, are finding higher prices at the gas pump in recent days. Juanita Winters, above, said she hasn't been following the increases too closely, because you have to buy it regardless.

Continued on 2

Novi Care won't fight state ban

By SHEILA PHILLIPS
Staff Writer

Novi Care Center officials waived their right to appeal an admissions ban imposed by the Department of Public Health last week because of poor care.

"We chose not to appeal because we feel our energies are better spent correcting the things the department said we need to correct instead of wasting energy fighting the ban," said Novi Care Administrator James Tiffin.

Health officials have previously said they would consider possible action against the facility's license if problems are not corrected.

State health officials ordered the facility Aug. 17 to stop admitting new residents until the center corrects several "serious" inadequacies uncovered during a recent investigation.

Problems cited included patient rights violations, failure to follow physician orders, use of unqualified employees, poor staff training and poor daily hygiene practices.

Last week's admission ban resulted in part from a monthlong state investigation into the July 9 death of a 70-year-old Alzheimer's disease patient who choked to death while being spoon-fed by an aide.

Investigators determined that employees were unable to recognize signs of distress, despite the fact "the patient was observed shaking and tears were reported running down the face."

Furthermore, the health department report stated that employees were unaware how to react to Esther Tauren's choking. "The regis-

"We chose not to appeal because we feel our energies are better spent correcting the things the department said we need to correct instead of wasting energy fighting the ban."

James Tiffin
Novi Care Center
Administrator

tered nurse on duty . . . failed to attempt basic emergency care upon assessment, such as a manual mouth clearing or Heimlich maneuver," according to the complaint document released last week.

Tiffin maintains that manual mouth-clearing techniques are not required under Red Cross guidelines and therefore his staff should not be penalized for failing to initiate such procedures.

Tiffin told the Novi News last week that he has appealed the death investigation findings.

Meanwhile, at press time the Oakland County Prosecutor's Office was still reviewing the circumstances behind the death for possible criminal neglect charges. The prosecutor's office has been reviewing the case for nearly two weeks.

The Office of Nursing Home Compliance of the Department of Public Health notified the care center last

Continued on 2

Novi is the 'center' of the world

By JAN JEFFRES
Staff Writer

At 2:30 this afternoon, Guru Chaula Thacker will sanctify the grounds of Novi Town Center with holy water from the Ganges River, assisted in the ritual by costumed Indian dancers.

For the remainder of the weekend, the shopping center might be more appropriately called the Novi World Center. The brainchild of Rotary Club member Dr. Mav Sanghvi, the city's first International Ethnic Festival will draw together from Friday through Sunday the talents of the Detroit-area Spanish, Asian and American Indian, Arab, Greek, Scottish, Scandinavian and Italian communities.

"We are going to great lengths to present only authentic examples of the diverse cultural heritage that makes up this region. We hope to educate young and old alike on a variety of ethnic traditions as well as offer an array of affordable un-

ique foods that may surprise those who have attended other ethnic festivals," he said.

Pulling together a three-day festival from scratch is a formidable job. But not only has Sanghvi rallied the support of six local service clubs, he's made the event a family affair.

For his sister-in-law, Livonia resident Jaydevi Sanghvi, ethnic festivals are a tradition. She was in charge of the Festival of India at Hart Plaza for over 15 years. (The organization withdrew from the Riverfront Festivals last year for economic reasons.)

Detroit's loss has become Novi's gain. Mrs. Sanghvi is the Indian food consultant for the Hyatt Regency in Dearborn. At the hotel's request, she's currently writing a cookbook of choice family recipes.

Festival-goers will have a chance to sample some of the savory gourmet delicacies Mrs. Sanghvi learned from her mother in her native Bombay, food that looks as good as it tastes, including lamb

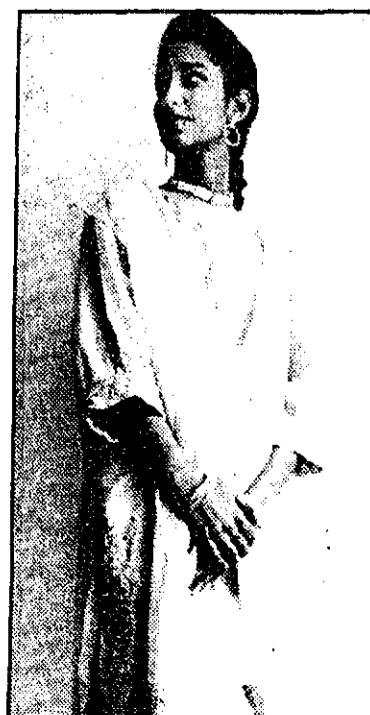
masala, rice biryani, poories (fried bread), ras malajee (a sweet made with ricotta cheese) and gulab jaman (a dessert). She'll demonstrate her cooking techniques at the site.

"There will for example be some Asian Indian ice creams that are absolutely fantastic. You won't believe it," Dr. Sanghvi said.

Encouraging young Indian Americans to cherish their ancestral culture is why Mrs. Sanghvi began organizing the Indian festivals. Her involvement started when she worked at the Wayne State University foreign student office assisting homesick scholars of all nationalities. From there, she founded the cultural club Festival of India.

"We want our children and the new generation not to get too westernized, to keep them in the culture and tradition. Most of them are born here. When they visit India, they don't get enough time there," she said.

Continued on 2



Padma Guthikooda models a salwar kameez

A special section on the International Festival/7-10A

inside

BUSINESS	1B
CLASSIFIEDS	3B
DIVERSIONS	10D
EDITORIALS	16A
GOLF NOTES	12D
HEALTH NOTES	15A
IN SHAPE	14D
LETTERS	16A
LIVING	1D
NOVI BRIEFS	4A
NOVI HIGHLIGHTS	3D
OBITUARIES	6A
POLICE BEAT	4A
REC BRIEFS	12D
SCOREBOARD	13D
SPORTS	11D
TRAVEL	9D
NEWS/SPORTS	349-1700
ADVERTISING	349-1700

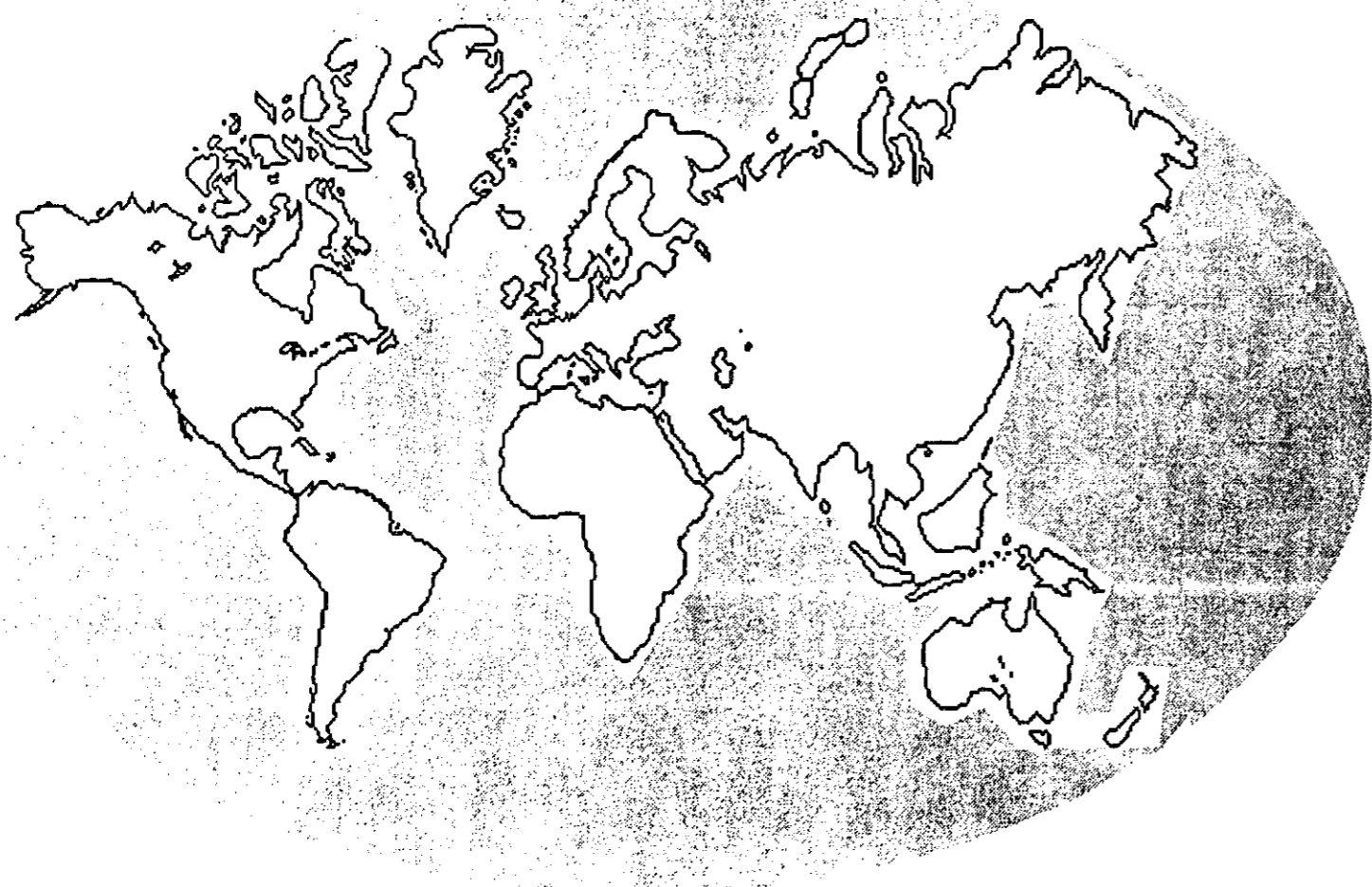
© 1990 Siger-Livington Publications
All Rights Reserved

149
Garage Sales
In The Green Sheet

Free Garage Sale Kits
See Classification 103

Green Sheet Ads
Get Results
(313) 348-3022

The world comes to Novi for new festival



The Novi Town Center this weekend becomes a center of celebration for the variety of cultures and nations found around the world and in southeast Michigan.

A local committee led by Mav Sanghvi has brought together an array of groups representing a host of different nations for the first NOVI INTERNATIONAL FESTIVAL.

Armenian, Arabic, Greek, Indian, Polish, Scandinavian and Scottish are among the cultures scheduled to be represented at the festival, which runs this Friday through Sunday, Aug. 24-26.

Everything is headquartered in the Novi Town Center, the shopping center located on the west side of Novi Road between Grand River Avenue and I-96.

I BALLERINI DI TROY (ITALIAN): Marina Canterella Russo has been teaching for seven years, but her group of Italian folk dancers has been in existence even longer.

Sponsored by the Italian Study Group of Troy, the group focuses on Italian culture, including foreign language, an Italian choir group, and lectures on Italian culture.

It is composed of students from the entire Detroit area. Formerly known as the Youth Folk Dance Ensemble, the group aims to learn and perform Italian folk dances and, through their performances, to educate the community on regional Italian folk dances and costumes.

The group offers two different classes: one for ages 4-7 and one for ages 8 and up. Both classes work together during performances, and they currently perform 17 folk dances from all different parts of Italy.

Each student/parent makes their own costumes representing different Italian regions. The purpose of this is to show the diversity of Italy.

I Ballerini Di Troy meets at 7:30 p.m. Wednesdays. Anyone interested in joining the group may call Marina Canterella Russo at 939-2382.

INDIAN PERFORMERS: The Asian Indian entertainment program is coordinated by Jaydev

and Bharat Sanghvi, of the Festival of India for many years.

Folk dances from various states of India are planned, drawing performers from various Indian dance schools in Michigan.

Events include an Invocation dance by the Vidyanjali School of Dance, with other styles of Indian dances following.

Saturday will show many Indian presentations from the Festival of India, including an Indian food demonstration; a demonstration of mehendi, hand and face painting using vegetable dyes; and a fashion parade showing varieties of Indian costumes.

The Nartan School of Dancing conducted by Raksha Dave will present several dances from all over India. Students will perform selected musical compositions with complex rhythms. Students learn to coordinate their dances with a particular musical piece with graceful movements. The colorful folk music transports the listener to the colorful village scene.

Kathak, one of the ancient forms of Indian classical dance, will be performed by Mala Sing of Dearborn, a famous and well-accomplished dancer.

Forest dance, aboriginal Bhil dance and other dances will provide dimensions of color, glamor and dazzle.

MO'S CLOGGING FEVER, based in Walled Lake, has been in existence for about three and one-half years and has performed at numerous functions and benefits.

Clogging is an American folk dance that originated in the Appalachian region of this country. The dance derives from numerous cultural backgrounds that came to the USA, including Dutch, French, Irish, Scotch, African, and American Indian. Tap dancing evolved from traditional clogging.

Over the past few years clogging has been growing in leaps and bounds. This show will try to capture the change that is presently occurring in clogging.

The performance will begin with bluegrass music, move to country, and end with modern music of today.

THE SCANDIA WOMEN'S CHORUS was organized in May 1976. Seventeen women attended the first rehearsal, and that number has grown to 35 members. Jean Anderson Branzel served as director from 1976 to 1987. Lillian Lagerkvist started as an accompanist with the group in 1976, and in 1987 was named director.

The chorus sings not only Swedish songs, but the songs of all the Scandinavian countries as well as American selections. When the chorus began, only a few members could read Swedish, but it wasn't long before several Swedish songs were included in

the first concert in December 1976.

The chorus performed in Bridgeport, Conn., at the 1978 national convention of the American Union of Swedish Singers. In 1980, the chorus was accepted into the Midwest Central Division of the AUSS, and in 1982 the Scandia Women's Chorus became the second women's chorus to be accepted into membership of the AUSS, formerly an all-male organization. There are now 20 women's choruses in the AUSS.

The chorus rehearses at 7 p.m. at the Swedish Club in Farmington Hills. Anyone interested in joining may call Lillian Lagerkvist at 656-8462.

BLUE LAKE SINGERS (NATIVE AMERICAN): The Blue Lake Singers consist of four men: Joe Marcus, Kevin Marcus, John Marcus and Jim Lowe.

The Blue Lake Singers are named after the sacred Blue Lake located on the mountains of Taos Pueblo, New Mexico. The men will drum and sing the following: grand entry, men's traditional, women's fancy and traditional, crow hop dance, rabbit dance, round dance and audience participation.

Along with the drummers, the dancers are from the local Michigan community of American Indians. The dancers perform various styles of dancing and wear colorful regalia.

THE GLENDI DANCERS of Assumption Greek Orthodox Church, Bloomfield Hills, have been together for over 10 years.

The group consists of 24 members, varying in age from 18 to 35. Under the direction of Sandie Koukoulas, the group has performed for various ethnic and cultural events in the Greek community as well as the Detroit ethnic community at large.

They were featured performers at the Detroit Hart Plaza Greek Festival. In addition, the Glendi Dancers have performed throughout the eastern United States, including several Greek dance conferences in Tarpon Springs, Florida.

Their unique and stylish dances are complemented by a wide variety of costumes representing several regions of Greece. The term "glendi," meaning "party" in Greek, is evident through the energetic style of the dancers.

THE GRAND RIVER DIXIELAND BAND: Music is international and this group of 12 talented musicians brings that theme to life in its rendition of several favorites.

The group plays "Are You From Dixie," "Alabamy Bound," and "Way Down Yonder in New Orleans," to name a few. Dixieland, rag and jazz music are very much a part of American history and the international scene. This local group, led by Bill

Dotson, has performed at several civic events and in many of the surrounding communities' summer concert series.

LOS FLAMENCOS DANCE THEATRE offers an exciting blend of traditional Spanish music and dance with innovative works by international choreographers.

The company has entertained audiences for more than a decade with dynamic performances combining rhythmic footwork, palmas, castanets, guitar and song with theatrical staging and colorful costuming. Under the artistic direction of "Cristina," the company's repertoire ranges from the light and whimsical to the profound and haunting dances of Spain.

The soul of flamenco lies deep in the sun-parched villages of southern Spain. Like most folk traditions, it sprang from the desire to interpret the emotional experiences of life into a shared cultural expression.

The intricate variations of guitar, song, and dance entwined to evoke emotions that range from passion and longing to spontaneous gaiety.

THE SHRINE DETROIT HIGHLANDERS (SCOTTISH) The Shriners sponsor this entertainment group to raise money to support 23 of the group's orthopedic hospitals and burn centers.



CLASSICAL INDIAN DANCE

India is among the countries which will be represented at the first Novi International Festival, which is set for this Friday through Sunday at the Novi Town Center. Other represented cultures include Scottish, Scandinavian, native American, and Spanish.



ENTERTAINMENT SCHEDULE

ALL EVENTS AT NOVI TOWN CENTER

FRIDAY, 8/24/90

SATURDAY, 8/25/90

SUNDAY, 8/26/90

6:00 pm - Indian Solo Dances
7:30 pm - Scandinavian Folk
9:00 pm - Middle Eastern Dance Ensemble
9:00 pm - Los Flamencos Spanish Dances
9:30 pm - Glendi Dancers (Greek)
10:30 pm - Indian Folk Dances

4:00 pm - Indian Classical Dances
4:30 pm - Senior Cloggers
5:00 pm - Indian Classical Dances
6:00 pm - Shrine Detroit Highlanders (Scottish)
7:00 pm - I Ballerini Di Troy (Italian)
8:00-10:00 pm - Indian Performers
10:00 pm - Rock Band

3:00 pm - Blue Lake Singers (SE Michigan Indian Association)
4:00 pm - Dixie Band
4:30 pm - Mo's Clogging Fever
5:00 pm - Scandia Women's Chorus
6:00-8:00 pm - Indian Performers
8:30 pm - Indian Folk Dances

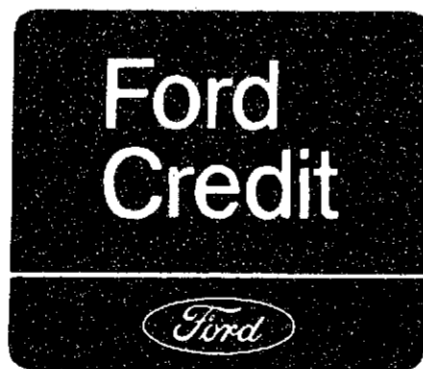
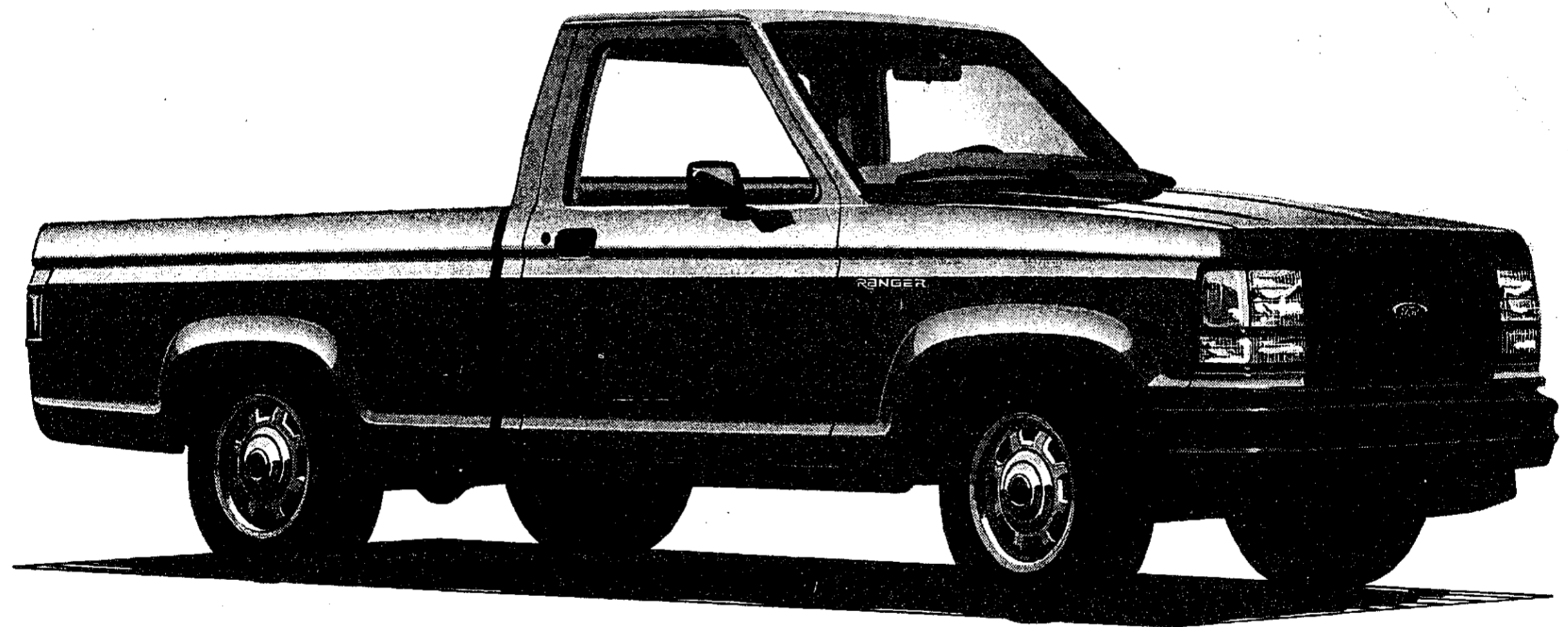
NOTE: PROGRAM SCHEDULE SUBJECT TO CHANGE WITHOUT NOTICE

METRO DETROIT FORD DEALERS

PICKUP THIS LOW MONTHLY LEASE PAYMENT ON '90 FORD RANGER'S!

→ **\$181*** ← **A MONTH**

MONTHLY LEASE PAYMENT
24-MONTH LEASE INCLUDES USE TAX.



THE ARITHMETIC

Monthly Lease Payment	\$ 181.00
Number of Months	24
Cash Down Payment	\$1,500.00
Refundable Security Deposit	\$ 200.00
Total Due at Lease Inception	\$1,881.00
Total Amount of Payments	\$4,344.00
Total Mileage Allowed	30,000
Mileage Charge Over 30,000	6¢ per mile

THE TERMS

- Lessee may have the option to purchase the car at lease end at a price to be negotiated with the dealer at lease inception: However, lessee has no obligation to purchase the car at lease end.
- Lessee is responsible for excess wear and tear.
- Refundable security deposit, first month's lease payment and cash down payment due at lease signing.
- Lease subject to credit approval and insurability as determined by Ford Credit.

*Lease payment based on Manufacturer's Suggested Retail Price of \$8,666 for a 1990 4x2 Ranger S, including title, use tax, destination charges and license fee. See your Metro Detroit Ford Dealer for his price and terms.

Get \$750 Cash Bonus when you lease a 1990 Ford Ranger. Cash Bonus may be applied to your transaction. For Cash Bonus you must take new retail delivery from dealer stock by 9/26/90. Dealer participation may affect customer savings.

BLOOMFIELD HILLS
ALAN FORD, INC.
1845 S. Telegraph

CENTERLINE
BOB THIBODEAU, INC.
26133 Van Dyke

DEARBORN
FURLANE FORD SALES, INC.
11583 Michigan Avenue

Wolverine Truck Sales
3750 Wyoming

VILLAGE FORD, INC.
23535 Michigan Avenue

DETROIT
JERRY BIELFIELD COMPANY
8333 Michigan Avenue

STARK HICKEY WEST, INC.
24780 W. Seven Mile Road

RIVERSIDE FORD, INC.
1833 E. Jefferson

FARMINGTON HILLS
TOM HOLZER FORD, INC.
39300 W. 10 Mile Rd.

FERRISDALE
ED SCHMID FORD, INC.
21600 Woodward Avenue

FLAT ROCK
DICK McQUISTON FORD, INC.
27675 Gibraltar Road

LIVONIA
BILL BROWN FORD, INC.
32222 Plymouth Road

MT. CLEMENS
MIKE DOHIAN FORD, INC.
35900 Grand

RUSS HILNE FORD, INC.
43870 Grand Avenue

NORTHVILLE
MCDONALD FORD SALES, INC.
550 W. Seven Mile Road

OAK PARK
MEL PARK FORD, INC.
24750 Greenfield

PLYMOUTH
BLACKWELL FORD, INC.
41001 Plymouth Road

FORD

Metro
**DETROIT'S
Quality
DEALERS**

PONTIAC
FLANNERY MOTORS, INC.
5900 Highland Road

REDFORD
PAT MILLIKEN FORD, INC.
9600 Telegraph Road

ROCHESTER
HUNTINGTON FORD, INC.
2890 S. Rochester Road

ROYAL OAK
ROYAL OAK FORD, INC.
550 N. Woodward Avenue

SOUTHFIELD
ANIS FORD, INC.
23206 Telegraph

SOUTHGATE
SOUTHGATE FORD, INC.
16900 Fort Street

ST. CLAIR SHORES
ROY O'BRIEN, INC.
22201 Nine Mile Road

STERLING HEIGHTS
JEROME DUNCAN, INC.
8000 Ford Country Lane

TAYLOR
RAY WHITFIELD, INC.
10726 S. Telegraph Road

TROY
TROY FORD
777 John R.

DEAN SELLERS, INC.
2600 W. Maple

WARREN
AL LONG, INC.
13711 E. Eight Mile Road

WAYNE
JACK DEMMER FORD, INC.
37300 Michigan Avenue

WESTLAND
NORTH BROTHERS FORD, INC.
33300 Ford Road

WOODHAVEN
CORNO FORD, INC.
22025 Allen Road



GREEN SHEET Classifieds

Sliger/Livingston East
Thursday, August 23, 1990 **B**

New condos fit into 'separate' class of homes

By RICK BYRNE
Copy Editor

Picture the traditional condominium for a second. You see a landscaped entrance, neatly manicured lawns and trimmed hedges. Then you come to the residences.

Usually the garage door is the most prominent design feature. Windows are few and far between. Townhouse-style condos usually share one or two walls with their next door neighbors. Even less attractive are the apartment-style condos, where you can have people above you and below you.

Then come developments like the Briarwood Condominiums of Novi, which seem like the answer to somebody's idea of a riddle: When is a condo not a condo?

Nestled among the old-growth hardwood trees on Beck Road near Ten Mile, Briarwood fills most of the traditional roles of a planned community: membership in an association, lawn and grounds maintenance, central facilities and, of course, the tax advantages. However, the buildings themselves are quite unique and attractive.

Unlike typical condos, Briarwood's units are completely detached. There are no common walls to share with noisy neighbors — unless you are the noisy neighbor.

"We are able to offer the lifestyle of condominium living without having to give up the features one may prefer in a single-family detached dwelling," said Milt Rothenberg, president of JAD Homes, developers of the community. "It's the best of both worlds, really. No compromising."

Now you can own a home, without the hassle of mowing the lawn.

"And you make sure your neighbor's lawn is mowed as well — and his house painted, and his snow shoveled," said Rothenberg.

Rothenberg isn't shy about calling Briarwood "luxury living," however. And with good reason. Some of the features of the community and the homes themselves are amenities that you'd expect at a much higher cost.

Take for instance the cathedral ceilings, standard equipment in all 70 of Briarwood's units.

"It makes for a dramatic appearance," said Rothenberg. "It's something that never goes out of style. If you look at the great homes — the ones that still look great, that were built in the 1920s and '30s — they all have high ceilings. It gives so much more flexibility to what you can do with a room."

High ceilings cost more for the builder to construct, but to Rothenberg, the quality is worth the expense.

Another highlight at Briarwood is the wooded environment. Four large, natural conservancies wrap the community in a blanket of old-growth trees. The condo contract stipulates that that environment will be maintained perpetually.

"Owners don't have to fear someone coming in and asking someone to change the use of that property," Rothenberg said. "It would require the consent of everybody."

Location is another plus for Briarwood, which offers easy access to the major expressways and shopping areas in Novi.

Continued on 2



Briarwood Condominiums in Novi keep the woody feel with protected woodlands surrounding the property

FREE Bag of Gold Lava Rock
With any purchase • Reg. \$4.25

Limit one free bag per customer • with this coupon
Expires 8-30-90

Fletcher & Rickard
Landscape Supplies Inc.
54001 Grand River • New Hudson
437-8009 Open Mon.-Sat 9-5; Sun. 11-3

Your full service auto body repair shop

- Free estimates
- Complete bumping & painting
- All insurance work
- Car rental available

B.K.S. Collision, Inc.
56891 Grand River • New Hudson
Center at Grand River and Milford Rd.
437-9131
437-9625

P.G. ENTERPRISES

486-2920

Paint Work Supplies • Knives
Metal Detectors • Air Guns • Miscellaneous

300 E. Lafayette, Suite 5
South Lyon

NOW OPEN
Learn How To Learn

LEARNING FOR EVERYONE

WEHRI PERFORMANCE TRAINING CENTERS

We can help your child:

- Improve reading/math skills.
- Follow directions
- Work and think fast
- Organize, concentrate, remember

Professional Excellence
in Learning Assistance
For All Ages

24283 Novi Road at 10 Mile
Novi 347-1555

September at

G'WILLIKER'S
EATERY & SPIRITS
and
More Choices
437-7693

Grand River and Milford Rd. • New Hudson

THE Place for Steaks
THE Place for Casual Fine Dining
THE Place for Mexican Cuisine
THE Place for Prime Rib Dinners (Only 9.95)
THE Place for Banquets

Is Now
THE Place for Family Dining

20% off your bill for parties of 8 or more
in the loft where all menus are offered
With this ad which is re-usable

New Arrivals 25% off

Sculpture Plush Values up to \$15.95 sq. yd.

Saxony Berber

Sale

1000's of rolls in stock sale ends August 25th

All in stock Carpet Rolls or Remnants 25% off Reg. up to \$19.95 sq. yd.

Used All Carpet \$1.00 sq. yd. to \$5.95 sq. yd.

DONALD E. McNABB COMPANY
31250 S. Milford Rd., Milford - just off I-96 Exit 155 (Milford Rd.)
(313) 437-8146 or (313) 357-2626
Monday-Saturday 9 am - 7 pm; Closed Sundays
only 15 minutes West of 12 Oaks Mall

Tenpenny's

CHERRY AND OAK FURNITURE

SUPER AUGUST CLEARANCE

ON ALL FLOOR SAMPLES

LIQUIDATING

CHERRY-OAK FURNITURE

SAVE 30% to 70%

EVERYTHING MUST GO!

Offer Good Days Of Sale Only
In Stock Merchandise. No Lay-A-Ways
SHOP EARLY FOR BEST SELECTION!

Tenpenny's 124 N. LAFAYETTE
SOUTH LYON 437-1590

CHERRY & OAK FURNITURE HOURS: Daily 10 - 9; Sun. 12 - 5

Super Crossword

ACROSS 1 Free time 2000 3000 4000 5000 6000 7000 8000 9000 10000 11000 12000 13000 14000 15000 16000 17000 18000 19000 20000 21000 22000 23000 24000 25000 26000 27000 28000 29000 30000 31000 32000 33000 34000 35000 36000 37000 38000 39000 40000 41000 42000 43000 44000 45000 46000 47000 48000 49000 50000 51000 52000 53000 54000 55000 56000 57000 58000 59000 60000 61000 62000 63000 64000 65000 66000 67000 68000 69000 70000 71000 72000 73000 74000 75000 76000 77000 78000 79000 80000 81000 82000 83000 84000 85000 86000 87000 88000 89000 90000 91000 92000 93000 94000 95000 96000 97000 98000 99000 100000

LAST WEEKS SOLUTION

ACROSS 1 Free time 2000 3000 4000 5000 6000 7000 8000 9000 10000 11000 12000 13000 14000 15000 16000 17000 18000 19000 20000 21000 22000 23000 24000 25000 26000 27000 28000 29000 30000 31000 32000 33000 34000 35000 36000 37000 38000 39000 40000 41000 42000 43000 44000 45000 46000 47000 48000 49000 50000 51000 52000 53000 54000 55000 56000 57000 58000 59000 60000 61000 62000 63000 64000 65000 66000 67000 68000 69000 70000 71000 72000 73000 74000 75000 76000 77000 78000 79000 80000 81000 82000 83000 84000 85000 86000 87000 88000 89000 90000 91000 92000 93000 94000 95000 96000 97000 98000 99000 100000

Arrow Auction Service

Arrow Auction Service is offering a wide variety of items for sale. This includes furniture, electronics, and household goods. The auction is open to the public and is held at a convenient location. For more information, please contact Arrow Auction Service at (313) 229-9027.

COUNTRY AUCTION

COUNTRY AUCTION is offering a variety of items for sale. This includes furniture, electronics, and household goods. The auction is open to the public and is held at a convenient location. For more information, please contact COUNTRY AUCTION at (313) 229-9027.

Garage Moving

Garage Moving service is available for all your moving needs. We offer professional and reliable moving services for homes and businesses. For more information, please contact Garage Moving at (313) 229-9027.

JERRY DUNCAN AUCTIONEERING SERVICE

JERRY DUNCAN AUCTIONEERING SERVICE is offering a variety of items for sale. This includes furniture, electronics, and household goods. The auction is open to the public and is held at a convenient location. For more information, please contact JERRY DUNCAN AUCTIONEERING SERVICE at (313) 229-9027.

FREE GARAGE SALE KITS

FREE GARAGE SALE KITS are available for all your garage sale needs. We offer professional and reliable garage sale kits for homes and businesses. For more information, please contact FREE GARAGE SALE KITS at (313) 229-9027.

BRIGHAM, Thomas J. 2711 18th Ave. S.W. ... GREGORY, 15500 Van Dyke ... HOWELL, Hubert ... NEW HUDSON, 5000 ... PINKNEY, George ...

BRIGHAM, Thomas J. 2711 18th Ave. S.W. ... GREGORY, 15500 Van Dyke ... HOWELL, Hubert ... NEW HUDSON, 5000 ... PINKNEY, George ...

BRIGHAM, Thomas J. 2711 18th Ave. S.W. ... GREGORY, 15500 Van Dyke ... HOWELL, Hubert ... NEW HUDSON, 5000 ... PINKNEY, George ...

BRIGHAM, Thomas J. 2711 18th Ave. S.W. ... GREGORY, 15500 Van Dyke ... HOWELL, Hubert ... NEW HUDSON, 5000 ... PINKNEY, George ...

BRIGHAM, Thomas J. 2711 18th Ave. S.W. ... GREGORY, 15500 Van Dyke ... HOWELL, Hubert ... NEW HUDSON, 5000 ... PINKNEY, George ...

BRIGHAM, Thomas J. 2711 18th Ave. S.W. ... GREGORY, 15500 Van Dyke ... HOWELL, Hubert ... NEW HUDSON, 5000 ... PINKNEY, George ...

BRIGHAM, Thomas J. 2711 18th Ave. S.W. ... GREGORY, 15500 Van Dyke ... HOWELL, Hubert ... NEW HUDSON, 5000 ... PINKNEY, George ...

BRIGHAM, Thomas J. 2711 18th Ave. S.W. ... GREGORY, 15500 Van Dyke ... HOWELL, Hubert ... NEW HUDSON, 5000 ... PINKNEY, George ...

BRIGHAM, Thomas J. 2711 18th Ave. S.W. ... GREGORY, 15500 Van Dyke ... HOWELL, Hubert ... NEW HUDSON, 5000 ... PINKNEY, George ...

BRIGHAM, Thomas J. 2711 18th Ave. S.W. ... GREGORY, 15500 Van Dyke ... HOWELL, Hubert ... NEW HUDSON, 5000 ... PINKNEY, George ...

BRIGHAM, Thomas J. 2711 18th Ave. S.W. ... GREGORY, 15500 Van Dyke ... HOWELL, Hubert ... NEW HUDSON, 5000 ... PINKNEY, George ...

BRIGHAM, Thomas J. 2711 18th Ave. S.W. ... GREGORY, 15500 Van Dyke ... HOWELL, Hubert ... NEW HUDSON, 5000 ... PINKNEY, George ...

BRIGHAM, Thomas J. 2711 18th Ave. S.W. ... GREGORY, 15500 Van Dyke ... HOWELL, Hubert ... NEW HUDSON, 5000 ... PINKNEY, George ...

BRIGHAM, Thomas J. 2711 18th Ave. S.W. ... GREGORY, 15500 Van Dyke ... HOWELL, Hubert ... NEW HUDSON, 5000 ... PINKNEY, George ...

BRIGHAM, Thomas J. 2711 18th Ave. S.W. ... GREGORY, 15500 Van Dyke ... HOWELL, Hubert ... NEW HUDSON, 5000 ... PINKNEY, George ...

BRIGHAM, Thomas J. 2711 18th Ave. S.W. ... GREGORY, 15500 Van Dyke ... HOWELL, Hubert ... NEW HUDSON, 5000 ... PINKNEY, George ...

152 Horses

EXCELLENT care. Horses... CLASSEY 4 wheel drive... CLEARANCE New approved...

153 Farm Animals

THROUGHBRED 13.3 H. great... PRIVATE farm has openings... REGISTERED Arabian 15 year...

154 Pet Supplies

DOG food, dog food, and bird... CAT food, dog food, and bird... P C Operators

160 Clerical

BRIGHTON company needs... CLERICAL Small engineering... CLERICAL Small engineering...

160 Clerical

BRIGHTON insurance office... CLERICAL Small engineering... CLERICAL Small engineering...

160 Clerical

BRIGHTON insurance office... CLERICAL Small engineering... CLERICAL Small engineering...

160 Clerical

BRIGHTON insurance office... CLERICAL Small engineering... CLERICAL Small engineering...

160 Clerical

BRIGHTON insurance office... CLERICAL Small engineering... CLERICAL Small engineering...

160 Clerical

BRIGHTON insurance office... CLERICAL Small engineering... CLERICAL Small engineering...

160 Clerical

BRIGHTON insurance office... CLERICAL Small engineering... CLERICAL Small engineering...

160 Clerical

BRIGHTON insurance office... CLERICAL Small engineering... CLERICAL Small engineering...

160 Clerical

BRIGHTON insurance office... CLERICAL Small engineering... CLERICAL Small engineering...

160 Clerical

BRIGHTON insurance office... CLERICAL Small engineering... CLERICAL Small engineering...

160 Clerical

BRIGHTON insurance office... CLERICAL Small engineering... CLERICAL Small engineering...

160 Clerical

BRIGHTON insurance office... CLERICAL Small engineering... CLERICAL Small engineering...

160 Clerical

BRIGHTON insurance office... CLERICAL Small engineering... CLERICAL Small engineering...

160 Clerical

BRIGHTON insurance office... CLERICAL Small engineering... CLERICAL Small engineering...

160 Clerical

BRIGHTON insurance office... CLERICAL Small engineering... CLERICAL Small engineering...

REACH OVER 165,000 POTENTIAL CUSTOMERS EVERY WEDNESDAY AND 136,000 EVERY MONDAY. HOUSEHOLD SERVICE AND BUYERS DIRECTORY

Livingston County Phone 227-4438 or 548-2570 Oakland County 437-4133, 348-3322, 885-8705 or 669-2121 Wayne County 348-3822 Washtenaw County 227-4435

INDEX

Table with multiple columns listing various services and businesses such as Accounting, Architectural Design, Alarm Service, Asphalt, Automobile, etc.

301 Accounting

J&J Business Services, professional accounting services... NEW Vision Designs, Residential design and alterations...

304 Alarm Service

MEREM Security Systems, High tech, low cost security systems... RESIDENTIAL COMMERCIAL from concept to working drawings...

308 Aluminum

ALL aluminum siding, trim, gutters, rain, downspouts... ALUMINUM and vinyl siding... MICHIGAN ALL-PRO ASPHALT PAVING

311 Appliance Repair

SAPOTOS Appliance repair, all makes, ovens, refrigerators, and freezers... PAVEMENT Asphalt Paving

317 Asphalt

ACE ASPHALT, Seal coating, driveways and parking lots... BRICK, block cement work... R. Berard Co. Inc. Concrete Construction

317 Architectural Design

NEW Vision Designs, Residential design and alterations... RESIDENTIAL COMMERCIAL from concept to working drawings...

317 Alarm Service

MEREM Security Systems, High tech, low cost security systems... RESIDENTIAL COMMERCIAL from concept to working drawings...

317 Aluminum

ALL aluminum siding, trim, gutters, rain, downspouts... ALUMINUM and vinyl siding... MICHIGAN ALL-PRO ASPHALT PAVING

161 Day Care
Baby-sitting
MOTHER needed immediately in the Detroit School...

162 Dental
Hypnotist, Parinaise and hypnosis in Brighton...

163 RN, LPN, NURSE AIDES
You are our greatest asset...

164 Restaurant
Industrial catering company seeking experienced chef...

165 Medical Assistants
Part-time and contingent positions are immediately available...

166 Sheraton Oaks is now accepting applications for: PANTRY COOK, LINE COOK, RESTAURANT SERVERS...

167 Medical
Attention RNs and LPNs, excellent wage and benefit package, flexible hours...

168 Medical
Attention RNs and LPNs, excellent wage and benefit package, flexible hours...

169 COOKS
Full and part-time. Great opportunity for experienced staff members...

170 Sheraton Oaks Housekeepers
In an exciting position in our new 2700 room Sheraton Hotel...

171 TOO CHEZ RESTAURANT
Formerly Chez Restaurant, located in the Sheraton Oaks Hotel...

172 NURSING HOMES
Nurse Aide positions. Full and part-time, all shifts...

173 BUDDY'S FARMINGTON HILLS
Night dishes, bussing, cooks, housekeepers, excellent Flexible hours...

174 SNELLING TEMPORARIES
Lonia (313)464-2100
5608/8141 (313)575-3700

175 Light Industrial
Bundling papers, collating, cafeteria work, small-parts assembly...

176 Western Wheel and A & P SUPERMARKETS
IMMEDIATE OPENINGS NO EXPERIENCE NECESSARY

177 KYOTO JAPANESE STEAK HOUSE
21150 Hagerty, Farmington Hills

178 ACCOUNTANT, CPA firm seeking
person for listing up to 20 accounts...

179 ATTENTION: \$300 WEEK TO START
Local company needs 12 men & women to start immediately...

180 AUTO TUNE MAGAZINE
Full and part-time positions available for advertising sales...

181 AUTO TUNE MAGAZINE
Full and part-time positions available for advertising sales...

182 AUTO TUNE MAGAZINE
Full and part-time positions available for advertising sales...

183 AUTO TUNE MAGAZINE
Full and part-time positions available for advertising sales...

184 AUTO TUNE MAGAZINE
Full and part-time positions available for advertising sales...

185 AUTO TUNE MAGAZINE
Full and part-time positions available for advertising sales...

186 AUTO TUNE MAGAZINE
Full and part-time positions available for advertising sales...

187 BARN help needed. Must be 18
years of age. Must be able to
clean stalls and handle horses...

188 BARTENDERS and wait
staff needed. Apply after 6 p.m.
Classroom 5788 East Grand
Road, Howell, MI...

189 BOWLING INSTRUCTOR
BRIGHTON AREA SCHOOLS
Substitute bus drivers needed...

190 BRIGHTON AREA SCHOOLS
Substitute bus drivers needed...

191 BRIGHTON AREA SCHOOLS
Substitute bus drivers needed...

192 BRIGHTON AREA SCHOOLS
Substitute bus drivers needed...

193 BRIGHTON AREA SCHOOLS
Substitute bus drivers needed...

194 BRIGHTON AREA SCHOOLS
Substitute bus drivers needed...

195 BRIGHTON AREA SCHOOLS
Substitute bus drivers needed...

196 DIRECT CARE STAFF
We are currently accepting
applications for full time...

197 DIRECT CARE STAFF
We are currently accepting
applications for full time...

198 DIRECT CARE STAFF
We are currently accepting
applications for full time...

199 DIRECT CARE STAFF
We are currently accepting
applications for full time...

200 DIRECT CARE STAFF
We are currently accepting
applications for full time...

201 DIRECT CARE STAFF
We are currently accepting
applications for full time...

202 DIRECT CARE STAFF
We are currently accepting
applications for full time...

203 DIRECT CARE STAFF
We are currently accepting
applications for full time...

204 DIRECT CARE STAFF
We are currently accepting
applications for full time...

205 DIRECT CARE STAFF
We are currently accepting
applications for full time...

206 DIRECT CARE STAFF
We are currently accepting
applications for full time...

207 DIRECT CARE STAFF
We are currently accepting
applications for full time...

208 DIRECT CARE STAFF
We are currently accepting
applications for full time...

209 DIRECT CARE STAFF
We are currently accepting
applications for full time...

210 DIRECT CARE STAFF
We are currently accepting
applications for full time...

211 DIRECT CARE STAFF
We are currently accepting
applications for full time...

212 DIRECT CARE STAFF
We are currently accepting
applications for full time...

213 DIRECT CARE STAFF
We are currently accepting
applications for full time...

214 DIRECT CARE STAFF
We are currently accepting
applications for full time...

215 DIRECT CARE STAFF
We are currently accepting
applications for full time...

216 DIRECT CARE STAFF
We are currently accepting
applications for full time...

217 DIRECT CARE STAFF
We are currently accepting
applications for full time...

218 DIRECT CARE STAFF
We are currently accepting
applications for full time...

219 DIRECT CARE STAFF
We are currently accepting
applications for full time...

220 DIRECT CARE STAFF
We are currently accepting
applications for full time...

221 DIRECT CARE STAFF
We are currently accepting
applications for full time...

222 DIRECT CARE STAFF
We are currently accepting
applications for full time...

235 Vans 1987 CHEVY Rough condition No fenders \$300 (313)735-1047... 1987 BUCK parts car, rough 1900 1956 Auban Heavy 100.6 rough but restorable, \$3,200 (517)246-2319

PUBLIC NOTICE SPARTAN REGIONAL TENTS SALE TOYOTAS & MITSUBISHIS AT ONE LOCATION 5701 S. PENN. LANSING • AUGUST 23-25

TOYOTAS 1¢ OVER DEALER INVOICE ON 1990'S MITSUBISHIS 1¢ OVER DEALER INVOICE ON 1990'S

- TERCELS COROLLAS CAMRYS 4 X 2'S 4 X 4'S SUPRAS CRESSIDAS 4 RUNNERS CELICAS OVER DEALER INVOICE*

SPARTAN TOYOTA . SPARTAN MITSUBISHI THIS SALE AT ONE LOCATION ONLY 5701 S. PENNSYLVANIA AVE. (517)394-6000 LIVINGSTON COUNTY CALL (517)394-4000 1-800-333-8696

S. CEDAR S. PENN. AVE MILLER RD. MEYER EXT 104 146

240 Automobiles Over \$1,000 1980 CROWN Victoria. Runs great, looks good. New brakes, new wheels. \$1,200 or best. (313)344-8705

1980 CROWN Victoria. Runs great, looks good. New brakes, new wheels. \$1,200 or best. (313)344-8705

YOU'RE LOOKING AT A LETHAL WEAPON.

Fact is, more Americans may die by the fork than by any other weapon. That's because so many of them use it irresponsibly. Like to fill up on high-fat, high-cholesterol foods. Foods that can lead the blood with cholesterol, which can build up plaque in their arteries, increasing their risk of heart attacks and threatening their lives. So next time you pick up a fork, remember to handle it as you would any other weapon. For self-defense, not self-destruction.

American Heart Association WE'RE FIGHTING FOR YOUR LIFE

!! ATTENTION: !! CHRYSLER EMPLOYEES AND RETIREES AND YOUR FAMILIES YOUR DISCOUNT IS NOW 4% ON CARS AND TRUCKS AND 6% ON CARAVANS ON ALL REMAINING NEW 1990 MODELS. SUMMER SALE-A-BRATION 0.0% APR \$2000 FACTORY REBATE

CHAMPION CHEVROLET Winning SPIRIT YEAR END "Double Rebate*" Sale OFFER GOOD THRU AUGUST 31, 1990. WE NEED TO MAKE ROOM FOR THE 1991 PRODUCTS. 7.9% (Annual Percentage Rate) FINANCING AVAILABLE

TRUCKS - TRUCKS - TRUCKS HARD TO FIND TRUCKS! 1986 1/2 TON CHEV P.U. \$6,677 1987 FORD F350 DUALY \$11,888 1986 CHEV SUBURBAN \$8,888

CHAMPION CHEVROLET UNDER NEW OWNERSHIP 229-8800

240 Automobiles Over \$1,000 1984 DODGE K-car 2 door, air a/c, Leland, roof rack, 66,000 miles, new good, looks good. \$1,800 (517)246-2319

WALDECKER'S 10th ANNIVERSARY SALE ENDS SOON! 1990 JEEP CHEROKEE or SAVE OVER \$4000

1990 PONTIAC GRAND PRIX LE 2-DOOR Automatic transmission, air conditioning power steering, power brakes, rear defroster. Stock no. 5166

1990 BUICK LESABRE CUSTOM 4-DR. #1 AMERICAN CAR IN CUSTOMER SATISFACTION 2 Years Running! SAVE \$3000 -AFTER REBATE-

WALDECKER PONTIAC • BUICK • JEEP • EAGLE 7885 W. Grand River • Brighton 313-227-1761

WALDECKER PONTIAC • BUICK • JEEP • EAGLE

Creative Living

REAL ESTATE SECTION

Thursday, August 23, 1990

C

The Millford Times, The South Lyon Herald, The Northville Record and The Novi News



The Cortez Kitchen nook, ranch styling and a dramatic bay window

By James McAlexander

Long, low and spacious, there is nothing cramped about the Cortez.

The living room, dining room and kitchen are huge, as is the master suite. Even the other two bedrooms are above average in size.

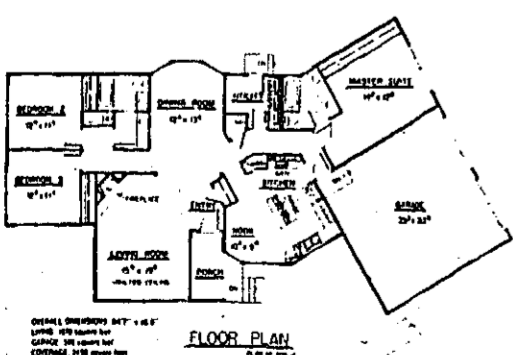
In fact, due to its spread-out California ranch styling the home requires an extra-wide lot, an odd-shaped cul-de-sac or acreage in the country.

Unlike most homes, the dining room is separate from both the kitchen and the living room. A three-sided bay window adds dimension and creates a dramatic focal point immediately visible on entering the house. In a room like this, even the simplest meal will seem elegant.

A vaulted ceiling with a half-round window at the peak of the gable makes the living room appear even larger than it actually is.

The roomy kitchen includes a nook for informal family meals. Counter space is everywhere, including on both sides of the range in the central work island—great for dishes that require stove top assembly. Shelves could be built over the work island, or the area kept open.

Closets line one whole side of the master suite, and the master bath has a double vanity. The guest bathroom also has two vanities, one separate from the bath area. Extra space in the utility room could accommodate a guest bed in a pinch, or be used as a sewing or hobby area.



For a study plan of the Cortez (209-17), send \$5 to Landmark Designs, P.O. Box 2307 CN, Eugene, OR 97402. (Be sure to specify plan name and number when ordering.)



The hunt for wild edibles is sometimes as thrilling as the dinner.

Photo illustration by SCOTT PIPEP

By Frank Eichenlaub

What do you do with those pesky, annoying dandelions after you've weeded them out of your garden and front yard? The same thing you can do with cattails, milkweed, maple seeds and tacos.

You eat them. Dandelions, followed closely by cattails, head up the list of the most unappreciated and misunderstood wild plants.

These plants, and many others which are found in your yard and surrounding area, are edible. And, some say, they can actually be quite tasty.

One caution, though—before you eat any wild plant, make sure you've consulted with an expert to find out if the plant is edible. Some harmless looking berries, for example, are poisonous.

But much of what you find growing around you can be turned into a meal.

For example, the young leaves of the dandelion, a common nuisance to most, are excellent raw or in a salad, according to nature writers Clare Bolsby and Berndt Beglund.

The plants contain a high content of vitamin A—25 times more than tomato juice and 50 times more than asparagus—and are "one of the first wild edibles to appear in Mother Nature's pantry."

Simmer dandelion leaves for 10 minutes and you've got a deli-

stalking edible WILD THINGS

WILD THING RECIPES

Looking for an exciting way to prepare some of the edible plants found in your yard? Try these recipes, which come from "Edible Wild Plants—A Guide to Collecting and Cooking," by Ellen Weatherbee and James Bruce.

Marinated dandelion crowns

Boil two quarts of water in a saucepan. Add two cups young dandelion leaves, crowns, and unopened buds. Boil five minutes. Drain and place in serving bowl.

Combine in a small mixing bowl:
1/4 cup salad oil
1/4 cup vinegar
1-2 tablespoons sugar
1/2 teaspoon garlic salt
1/4 teaspoon onion salt

Pour over dandelions and serve.

Boiled cattail spikes

Remove the sheaths from 2 dozen cattail spikes. Bring to a boil in a large saucepan:
3 quarts water
1 teaspoon salt

Add cattail spikes and boil until just tender (about eight minutes). Drain. Serve hot with 4 tablespoons butter or oleo drizzled on the top.

icious tea. Ground dried leaves and you've got dandelion coffee.

The yellow flowers everyone loves to see in their garden? They make a good wine, Bolsby and Beglund write in "The Edible Wild."

Other recipes that the writers suggest include—meaning there are many—fried spiced dandelion leaves, dandelion leaves with toasted sesame seeds and Chinese-style creamed dandelion leaves.

As for cattails, the plant grows in marshy areas and provides food all year, say the writers.

Steamed or boiled in salt water, the inner stalks are excellent. The roots provide a meal after they are scraped, cleaned, sliced and cooked or roasted.

Bolsby and Beglund suggest mixing porcupine fat—yep, right—and water with ground cattail pollen to make bread.

They also recommend the following recipes: cattail stew, cattail crullers, cattail ham under ashes and cattail pancakes filled with blueberries.

If you've already called Chem-Lawn or you don't live near a swamp, what other wild edible does Livingston County and the surrounding area provide?

The maple tree, of course. Don't start knawing on the tree; try the seeds, the leaves and the sap.

That's right, not only are the little helicopter seeds fun, but they are edible by humans. And

Continued on 3

REAL ESTATE

The 'smart house' of the future

By James M. Woodard

The home of the future will be a high-tech "smart house" and more commonly will be rented by its occupant family. That is the view of George Barna, noted author and president of Barna Research Group, a marketing research firm.

In his newest book—"The Frog in the Kettle"—Barna paints a verbal picture of the evolving new home in the American scene during the next decade.

"You will be able to purchase a smart house—one that automatically controls all indoor functions, from turning on the lights as you enter a room to changing the room temperature according to who is in the room.

"It will also activate the television set, stereo or security system on command."

Barna, who has conducted extensive research for major corporations and organizations, sees significant changes in housing sparked by demographic and lifestyle trends.

"Housing will undergo interesting transformations," he said. "Because of the frequency with which we will move to new locations and change partners, and because of the likelihood of economic up-

heavals in the early '90s, we will rent and lease homes more, instead of buying.

"This will reduce the property settlement battles over divorce and expedite the forming of new living arrangements."

Barna also sees the development of more co-housing developments in the United States.

"We will witness the growth of a common European form of housing called co-housing," Barna said. "Neighborhoods are designed by the residents, providing clusters of private dwellings with shared community facilities—e.g., laundry, day care, dining areas, guest rooms, recreation facilities.

"People's private living space is reduced, but remains adaptable to the person's changes in lifestyle. In Denmark and other places in Europe, this approach had been found to encourage greater social interaction and reduce stresses related to housing needs and maintenance."

Incidentally, the title of Barna's new book, "The Frog in the Kettle" (published by Regal Books), is pegged to an interesting analogy. A frog placed in a kettle of boiling water will quickly jump out, the book explains. But place a frog in a kettle of room-temperature water, then slowly in-

crease the temperature to the boiling point and the frog will stay in the water until it boils to death.

Our lifestyle and environment gradually are changing. Like a frog in slowly boiling water, we must recognize and respond to changes around us if we are to avoid big problems in the future.

That analogy definitely applies to the nation's housing needs.

Q: Why are foreign investors more actively seeking farmland in the United States?

A: We asked an expert in the field to respond to the question.

Alan "Bud" Middaugh, senior vice president of Selected Properties International, a real estate brokerage organization based in Denver, made this observation.

"Demand for agricultural products should increase significantly in Eastern bloc and other countries. With this growing demand will come more investment in mid-America land because there is more recognition of its value as compared with coastal regions. Also, the U.S. is considered one of the few remaining safe havens for investments."

Middaugh, who served as president of U.S. Meat Export Federation for 14 years,

predicts that Far East and European investments in U.S. land—primarily agricultural and recreational properties—will increase by about 30 percent over the next year.

H. Bob Fawcett, president of Selected Properties International, pointed out that Japanese investors quadrupled their acquisition of undeveloped land in the United States during the past year, even though their total real estate investment was down by 11 percent.

Q: Is the demand for reverse mortgages by senior home owners still growing or is it tapering off?

A: It's continuing to grow. The concept of tapping home equity to generate additional tax-free monthly income—usually for life—is appealing to many seniors over age 62.

"The demand is incredible," said Bronwin Belling, consumer affairs director of the American Association of Retired Persons. "I could answer the phone all day from seniors who want information about reverse mortgages."

Inquiries are invited and may be answered in this column. Write James M. Woodard, Copley News Service, P.O. Box 190, San Diego, CA 92112-0190.

NOVI HIGHLIGHTS:
Sign-up for kids' storytime begins/3D

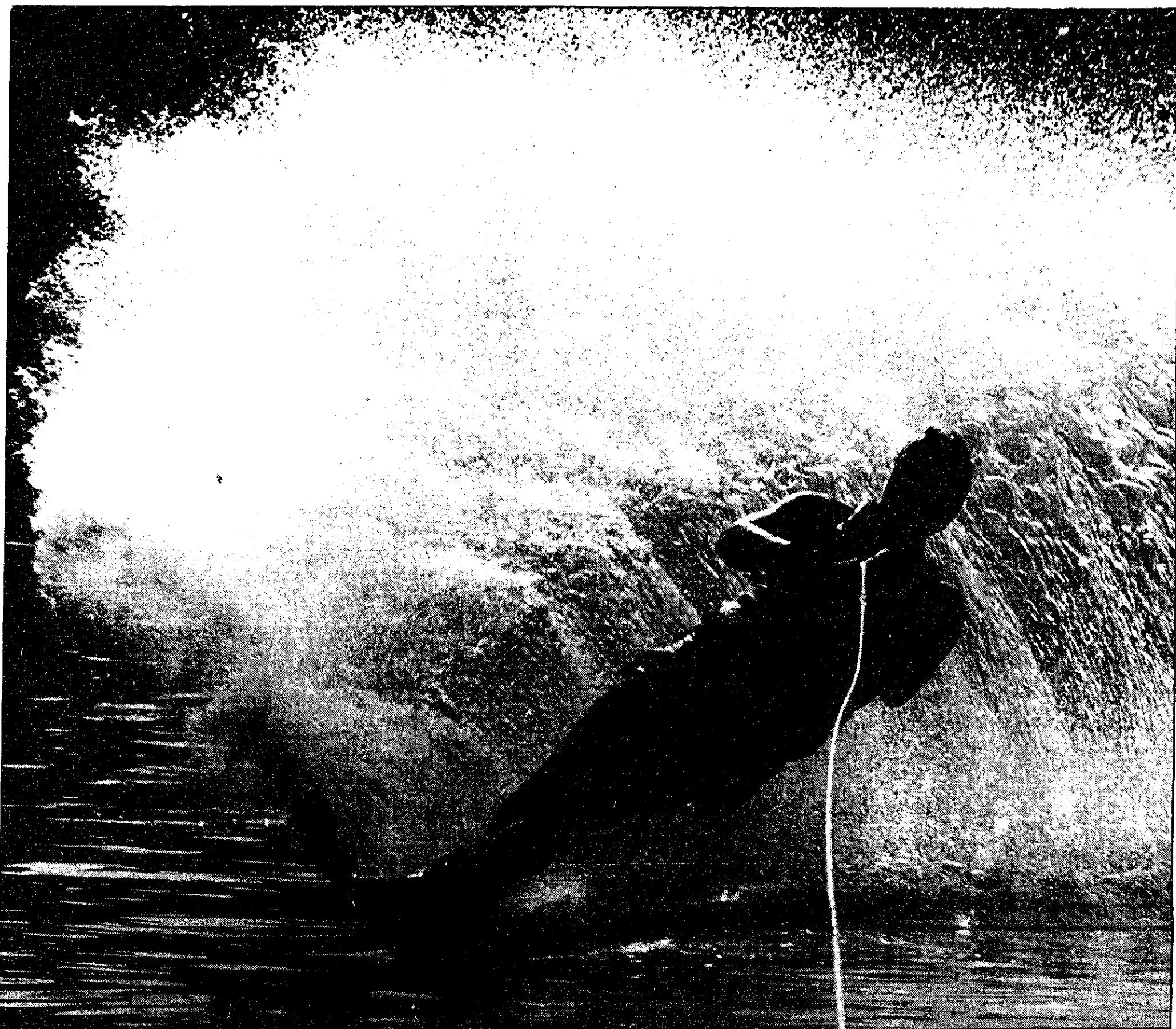
ON THE PHONE:
Senior program helps reassure elderly/6D

THURSDAY
August 23,
1990

MOVIE MUNCHIES:
Times are changing for theater concessions/5D

DIVERSIONS:
Bead stringing can create treasures/10D

1D



A skier on Walled Lake is silhouetted against the spray from his ski.

Yeah, sure, it's nearing the end of summer. And the weather and water are both getting cooler. And the sun is not staying out quite as long.

"So what?" says Walled Lake resident Scott Kraft.

As most people start stashing away bathing suits and unshelving woolen sweaters in preparation of football games and other fall fun, Kraft still has his mind on waterskiing.

"I have skied as late as the middle of November," says Kraft, a fervent Walled Lake waterskier and member of the ski club that has seemingly seized control of the lake.

Although for most people waterskiing is basically a seasonal sport, for the skiers in the Walled Lake Waterskiing Club, the meaning of "seasonal" is relative.

"We start when the ice melts," says Kraft. "The end of March is when we started this year." In the gray and dismal month of March, water sports for most people are still far in the future or just a distant memory.

seasonal SPRAY

“A bad day of skiing beats a good day at work.”

Story By Leslie Perelra Photos by Bryan Mitchell

"We all have dry suits," says Kraft. Dry suits are water-resistant body suits, sealed at the ankles and wrists to keep out water, which enable the skier to be out in cold water. A loosely knit group of about 20, the Walled Lake skiers share the common ties of lightning quick boats, homes on the lake and a love of walking on water — fast.

Kraft, and the few skiers he generally speeds around the lake with, meet as often as four times a week to jump in their boats for some serious skiing.

The Master Craft ski boats owned by several of the skiers are "top of the line," according to Kraft. And that is not hard to discern as passengers are plastered against the walls of the boat with each dramatic turn of the steering wheel as if on a wild roller-coaster ride.

The furry passenger on the back seat, a golden retriever named Honey, ducks her head methodically with each passing of the tow rope over her head. Her face is expressionless, as though a churning stomach is something she has become

Volunteers



Volunteer Micki Lankes

Helping with her time

By DOROTHY NASH
Special Writer

"The critical thing," according to Micki Lankes, one of 10 Northville Recreation Commissioners representing city and township, "is the shortage of soccer fields."

And it was this concern that led her to apply for Commission membership.

"We use the fields at Fish Hatchery, Cooke School, Winchester Elementary, and Ford Field, but we have to share with baseball," she said. "We own land on Beck Road, but we haven't enough funds to develop it."

So it is understandable that, according to her, having the library millage defeated was disastrous.

But it hasn't stopped her from being a participant in activities sponsored by the Recreation Commission.

She has helped coach a soccer team and a basketball team. She plays on the women's softball team.

"I got the softball team going three years ago," she said, "and now there are eight teams.

Also I coached basketball for third and fourth grade girls last year, and this year I'll do fifth and sixth graders."

Her own children — a 14-year-old boy and 10-year-old girl — are active in sports, too, and she added, "I love going to their games."

But there's more that she's involved in. "I'm on two sub-committees."

One is Program, and last year that got her into working on the Dad-Daughter Valentine Dance and the Mother-Son Dance in October. Also "I've helped with the Victorian Festival."

The other committee that Micki Lankes serves on is Personnel, which introduces her to the machinery of the Recreation Department — secretary, assistants, and maintenance.

Is there, perhaps, a lack of community education on what the Recreation Commission offers for residents of all ages in Northville?

In answer Micki Lankes suggests, "The meetings are open to the public. They're held at 8 p.m. on the second Wednesday of each month, alternately at the Township Hall and the City Hall."

Random Sample



Do you approve of sending U.S. troops to the Middle East?

Eight said, "Yes" One said, "No" One said, "I don't know"

"Yes, because we have a responsibility to those countries."

"I have mixed feelings"

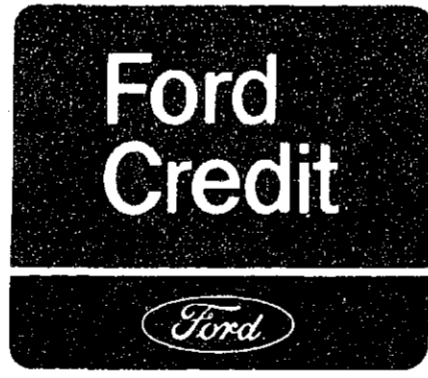
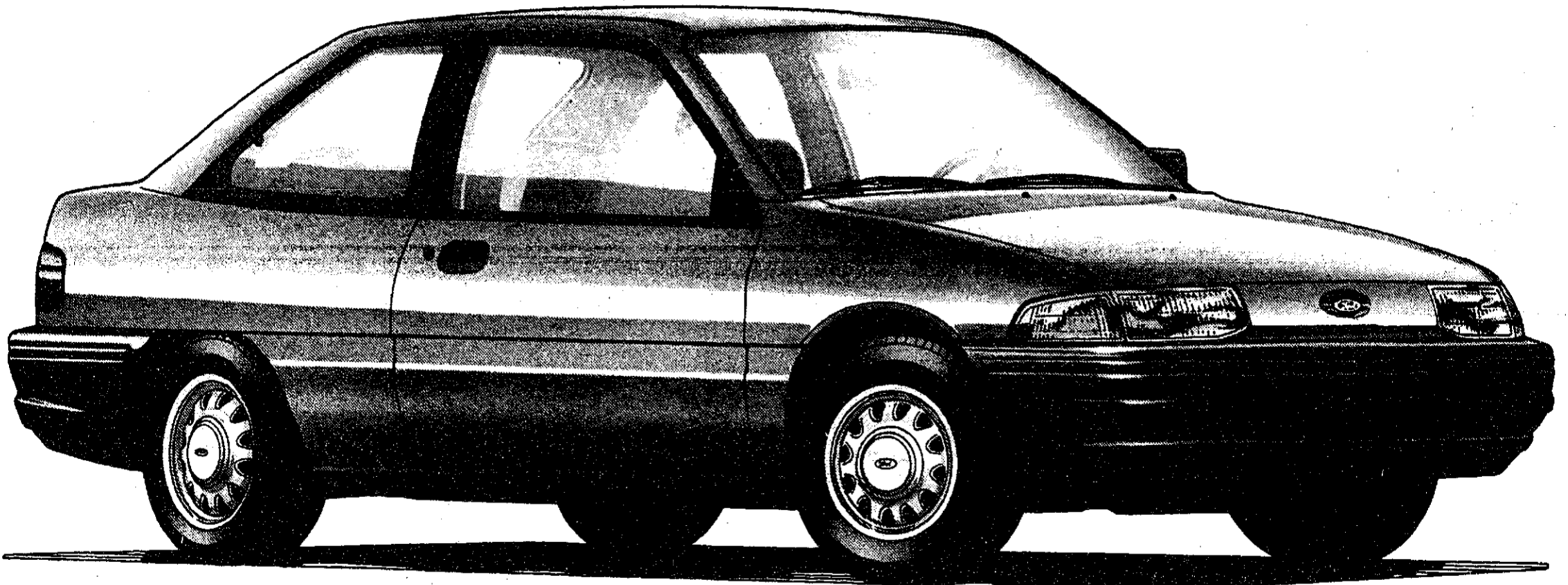
Graphic by ANGELA PREDHOMME

METRO DETROIT FORD DEALERS

LEASE A 1991 FORD ESCORT FOR ONLY...

→ **\$166*** ← **A MONTH**

■ MONTHLY LEASE PAYMENT
■ 24-MONTH LEASE INCLUDES USE TAX.



THE ARITHMETIC

Monthly Lease Payment	\$ 166.00
Number of Months	24
Cash Down Payment	\$1,000.00
Refundable Security Deposit	\$ 175.00
Total Due at Lease Inception	\$1,341.00
Total Amount of Payments	\$3,984.00
Total Mileage Allowed	30,000
Mileage Charge Over 30,000	6¢ per mile

THE TERMS

- Lessee may have the option to purchase the car at lease end at a price to be negotiated with the dealer at lease inception: However, lessee has no obligation to purchase the car at lease end.
- Lessee is responsible for excess wear and tear.
- Refundable security deposit, first month's lease payment and cash down payment due at lease signing.
- Lease subject to credit approval and insurability as determined by Ford Credit.

*Lease payment based on Manufacturer's Suggested Retail Price of \$8,237 for a 1991 Escort Pony Hatchback including title, use tax, destination charges and license fees. See your Metro Detroit Ford Dealer for his price and terms. Offer ends 9/3/90.

<p>BLOOMFIELD HILLS ALAN FORD, INC. 1845 S. Telegraph</p> <p>CENTERLINE BOB THRODEAU, INC. 26333 Van Dyle</p> <p>DEARBORN FAIRLANE FORD SALES, INC. 14585 Michigan Avenue</p> <p>VILLAGE FORD, INC. 23335 Michigan Avenue</p>	<p>DETROIT JERRY BIELFIELD COMPANY 8333 Michigan Avenue</p> <p>STARK HICKEY WEST, INC. 24750 W. Seven Mile Road</p> <p>RIVERSIDE FORD, INC. 1833 E. Jefferson</p> <p>FARMINGTON HILLS TOM HOLZER FORD, INC. 39300 W. 10 Mile Rd.</p>	<p>FERNDALE ED SCHMID FORD, INC. 21600 Woodward Avenue</p> <p>FLAT ROCK DICK McQUISTON FORD, INC. 22675 Gibraltar Road</p> <p>LIVONIA BILL BROWN FORD, INC. 32222 Plymouth Road</p> <p>MT. CLEMENS MIKE DORIAN FORD, INC. 35900 Grafton</p>	<p>RUSS MILNE FORD, INC. 43870 Grafton Avenue</p> <p>NORTHVILLE McDONALD FORD SALES, INC. 550 W. Seven Mile Road</p> <p>DAN PARK MEL FARR FORD, INC. 24750 Greenfield</p> <p>PLYMOUTH BLACKWELL FORD, INC. 41001 Plymouth Road</p>	<p>PONTIAC FLANNERY MOTORS, INC. 5900 Highland Road</p> <p>REDFORD PAT MILLIKEN FORD, INC. 9600 Telegraph Road</p> <p>ROCHESTER HUNTINGTON FORD, INC. 2890 S. Rochester Road</p> <p>ROYAL OAK ROYAL OAK FORD, INC. 550 W. Woodward Avenue</p>	<p>SOUTHFIELD AVIS FORD, INC. 29200 Telegraph</p> <p>SOUTHGATE SOUTHGATE FORD, INC. 16600 Fort Street</p> <p>ST. CLAIR SHORES RUDY O'BRIEN, INC. 22201 Nine Mile Road</p> <p>STERLING HEIGHTS JEROME DUNCAN, INC. 8000 Ford Country Lane</p>	<p>TAYLOR RAY WHITFIELD, INC. 10725 S. Telegraph Road</p> <p>TROY TROY FORD 777 John R.</p> <p>DIAN SELLERS, INC. 2500 W. Maple</p> <p>WARREN ALL LONG, INC. 13711 E. Eight Mile Road</p>	<p>WAYNE JACK DEMMER FORD, INC. 37300 Michigan Avenue</p> <p>WESTLAND NORTH BROTHERS FORD, INC. 33300 Ford Road</p> <p>WOODHAVEN GORDON FORD, INC. 22025 Allen Road</p>
---	--	---	--	---	--	---	--

FORD
Metro
**DETROIT'S
Quality
DEALERS**

