

50¢

THURSDAY
SEPTEMBER 3, 1992

Volume 37
Number 37
Four Sections
52 Pages plus Supplements

501077 06/09/93 **CR10
NOVI PUBLIC LIBRARY
45245 W. TEN MILE
Novi MI 48375-3014

the NOVI NEWS

Opinions WHAT IS THE 'TEAM NOVI' SPIRIT? / 16A

Living A LOOK AT THE UNSUNG HEROES OF WORKING WORLD / 1B

Sports GOOD THINGS ALREADY HAPPENING FOR NOVI TENNIS / 7B

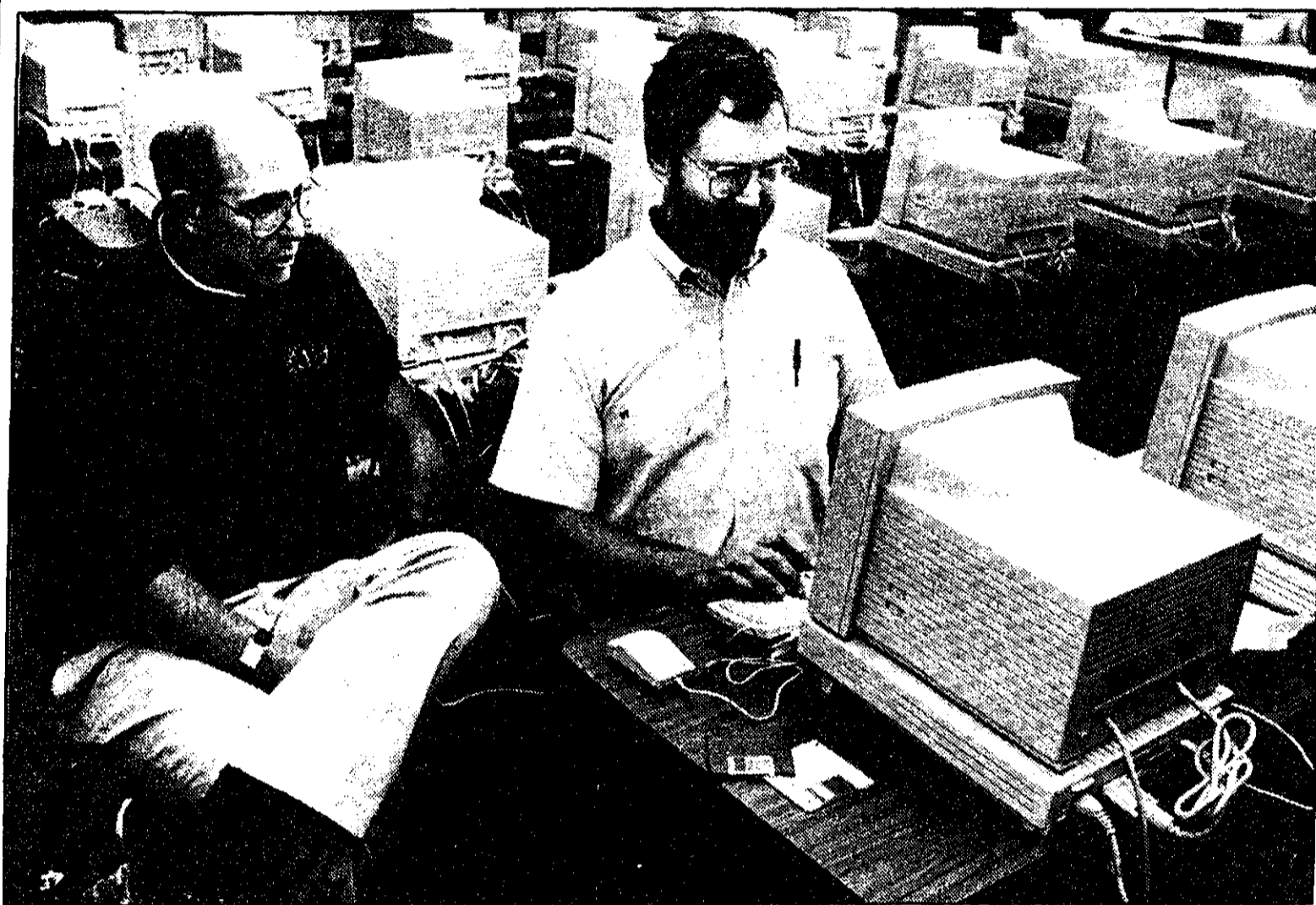


Photo by BRYAN MITCHELL

Jim Newbold, left, and instructional technology coordinator Jim Fry work on the software for the new computers in the district's new tech center.

Principals praise Techlink center

By CRISTINA FERRIER
Staff Writer

School officials, teachers and students got a first look at the new Techlink Center this week. And they liked what they saw. The Techlink center, so named because it joins the Novi Meadows and Novi Middle School buildings and "links" students with future technology, is not yet completely open, but is expected to be finished within the next few weeks. Assistant Superintendent for Business Jim Koster said the district is still ironing out a small glitch before the center will be fully operable, but everyone is excited about getting started. "We got one little glitch with the furniture arriving," Koster said. "Even though we ordered it a

long, long time ago, something happened somewhere down the line and some of it is late. "But the staff seems to be very excited, and the kids are extremely excited about what they're going to use." Koster said that on Tuesday, during the first day of school, the center was filled with a steady stream of teachers taking students on mini tours. The center is set up with two wings complete with their own computer labs. One of the wings has classrooms for Novi Meadows and the other has classrooms for Novi Middle School. A center area of the new building has Macintosh computers and multimedia equipment for use by students in both schools. That center area will eventually be used by all

students in the districts, as well as adults in the community, Koster said. Novi Middle School Principal Milan Obrendovich said the center has limitless potential, and will be used for such educational activities as large group instruction. New technology such as a video studio will allow for students to create multi-media productions, as opposed to the old oral reports most adults remember doing. "We're all very excited about it because the technology is not just going to be an education in itself. The teachers look at it as another tool we will be able to use to deliver the curriculum and enhance the learning experience. "There's just so much technology that can be utilized in education."

Continued on 8

JCK president approves of water policy

By JAN JEFFRES
Staff Writer

Novi's consulting engineers say they welcome the proposed drafting of a policy to guide their work, in the wake of questions raised by several Novi City Council members over the re-routing of a Novi Road water main. "I believe there's the need for a very conclusive policy," Joseph Kapelczak, president of JCK & Associates, said. "For all the consultants, not just for us. If you have the policy written, it should have a flow chart in it. . . . The better the policy, the smoother things work." After investigating the controversy, Novi's City Attorney David Fried recommended the guidelines be drafted. Fried said the decisions made the consultants should have been left to the city staff or council — but that the actions were not taken with an improper motive.

In a report given to the city administration this week, Novi's consulting engineers JCK & Associates stand by their earlier statements that re-routing the Novi Road water main was the least costly of three alternatives. The \$64,000 increase was a cheaper option selected by the engineers when the owners of Mystic Forest refused to grant the city the needed easement along Novi Road, according to the report by JCK vice president Gary Foyt. The story is on page 10.

A special meeting on the issue, to be held this month, has not yet been scheduled. A policy may not be enough, Council Member Nancy Cassis said Monday. Cassis — who has consulted her own attorney on the water main issue — says she thinks the council should consider conducting its own investigation, an authority granted them in the city charter. She has also asked her lawyer to provide her with a report on water main and would like the city to hire an outside engineer to do the same.

Cassis and her colleagues Carol Mason and Joseph Toth ripped into the attorney's report at the Aug. 24 council meeting. Cassis suggested that the city charter might have been violated. She has dubbed the issue "Watermaingate." JCK employees say that they gave the council easement documents indicating that the water main had been re-designed by their firm to jump west from Novi Road into Mystic Forest subdivision — but didn't specifically draw this to the council's attention.

Continued on 10

Police issue warning to parents

By CRISTINA FERRIER
Staff Writer

Three reports of men in a red vehicle approaching and frightening young girls in local subdivisions have prompted Novi Police to issue a warning to parents. "There is cause for parents to make their children aware of the potential danger associated with strangers approaching them," said Novi Police Chief Doug Shaeffer. The incidents have all occurred in the past six months. Two weeks ago, an 8-year-old girl was frightened by two teenage males in a red car who followed her to her home on Queenspointe in the Meadowbrook Glens subdivision at

"Remember, you can talk to them now or you can talk to them after something has happened. Don't wait. Prevention remains the best defense."

Doug Shaeffer
Novi Police Chief

dusk. The girl told police that one of the teens got out of the car and chased her home. When she reached the doorway of her house, she said, she looked back and saw him standing in her driveway. Two other incidences reported to Novi police earlier this year involved similar circumstances.

A 13-year-old girl living in Dunbarton Pines reported that three males, all approximately 17 years old, grabbed her and pulled her into a shiny red car while she was walking her dog on Roundview on the evening of March 19. The victim in that case told police the car passed her, then backed up

to her and the rear seat passenger grabbed her and pulled her into the car. She told police that, while the driver and front-seat passenger sat in the car, the rear-seat passenger pulled off her clothing and sexually assaulted her, then pushed her out of the car. Another parent reported in April that his 8-year-old daughter was frightened by similar suspects while she was walking home from a friend's house near the corner of Heatherbrae and Brookforest, but the girl ran away. "In each case, the men are described as approximately 18 years old, wearing casual clothing and

Continued on 5



Photo by BRYAN MITCHELL

Mixed emotions

The first day of school brings out a mix of emotions from school children, some excited and eager to get back to the books, others dreading the coursework. School started in the Novi district Tuesday with a half day of school. Above, students pile out of the buses and into Parkview Elementary to begin the school year.

Continued on 8

inside

- BUSINESS 1D
- CALENDAR 2A
- CLASSIFIEDS 3D
- DIVERSIONS 5B
- EDITORIALS 16A
- LETTERS 17A
- LIVING 18B
- NOVI BRIEFS 4A
- NOVI HIGHLIGHTS 2B
- OBITUARIES 19A
- POLICE NEWS 4A
- RECREATION 10B
- SPORTS 7B
- TRAVEL 6B
- VOLUNTEER 1B
- NEWS/SPORTS 349-1700
- ADVERTISING 349-1700
- CLASSIFIEDS 348-3024
- DELIVERY 349-3627

LABOR DAY EARLY DEADLINES

Monday Buyers Directory; Pinckney, Hartland, Fowlerville Shopping Guides; Pinckney, Hartland Fowlerville Buyers Directory; and Wednesday Buyers Directory deadlines will be Thursday, September 3rd at 3:30 p.m.

Monday Green Sheet and Wednesday Green Sheet deadlines will be September 4th at 3:30 p.m.

Condos auctioned at bargain prices

By JAN JEFFRES
Staff Writer

Members of the over-50 set in the market for lakeside living had a chance to grab what has been billed as major bargains Sunday, as the 37 unsold units of South Pointe condominiums were placed on the auction block. Homes which were originally marketed for as high \$79,000 to \$99,900 went for \$50,000 to \$75,000 at the standing-room only auction at the Novi Sheraton-Oaks Hotel. The starting bid was \$35,000. In a sense, a sluggish economy and a glut of condominiums created the affordable residences Novi has long sought for its elders. Studies of the housing situation have indicated that the city has a severe shortage of inexpensive

housing for retirement-age adults. In 1989 special election, Novi voters agreed with the senior citizen housing committee that lower-cost homes are needed — but not at the expense of the taxpayers. South Pointe was the first and last development to go up under the city's senior housing ordinance, which was repealed in 1988. An attempt to lower the residency age there from 50 to 40 or 45 was turned down by the city this summer. The buyer's gain was the developer's loss, says Kenneth Singer, of the West Bloomfield-based Kenneth Singer and Company, which built the condominiums. "We have set extremely low prices on the remaining units. They are substantially below cost," he said Tuesday.

Continued on 8

Walled Lake firm may receive first M-5 work contract

By JAN JEFFRES
Staff Writer

The hefty job of building the first phase of the over \$89 million Haggerty Connector has tentatively been awarded to a Walled Lake company. Work is scheduled to begin this fall on the first leg of the six-lane highway. C.A. Hull Company, with a bid of \$19.4 million, may get the contract to build the road from the existing freeway interchange at north for one-half mile to Twelve Mile Road at a spot just east of Summit Drive.

The project, to be completed in August 1994, includes ramps, drainage structures, noise walls and a bike path.

Nine contractors submitted bids to the Michigan Department of Transportation (MDOT) for the work. Hull's bid came in 2.5 percent lower than the highway department's estimate.

But the bid must be approved by the Michigan Transportation Commission and the State Administrative Board before the contract can be awarded.

State highway M-5 will eventually link I-75, I-696 and I-96 freeways north to Pontiac Trail.

Concerns have been raised by several Novi City Council members that phase one of the project will open before the entire Connector is completed. MDOT already has the permits from the state department of natural resources (DNR) and the federal Environmental Protection Agency for the first section of the road.

MDOT transportation planner Hank Lotosinski says that shouldn't be a problem. The new link to the freeway won't open until Novi and Farmington Hills have completed their scheduled improvements to Twelve Mile Road. Farmington Hills is almost done with its share.

Lotosinski said the road designs should accommodate traffic in the area for the level it will likely reach by 2010.

"When it's open five years from

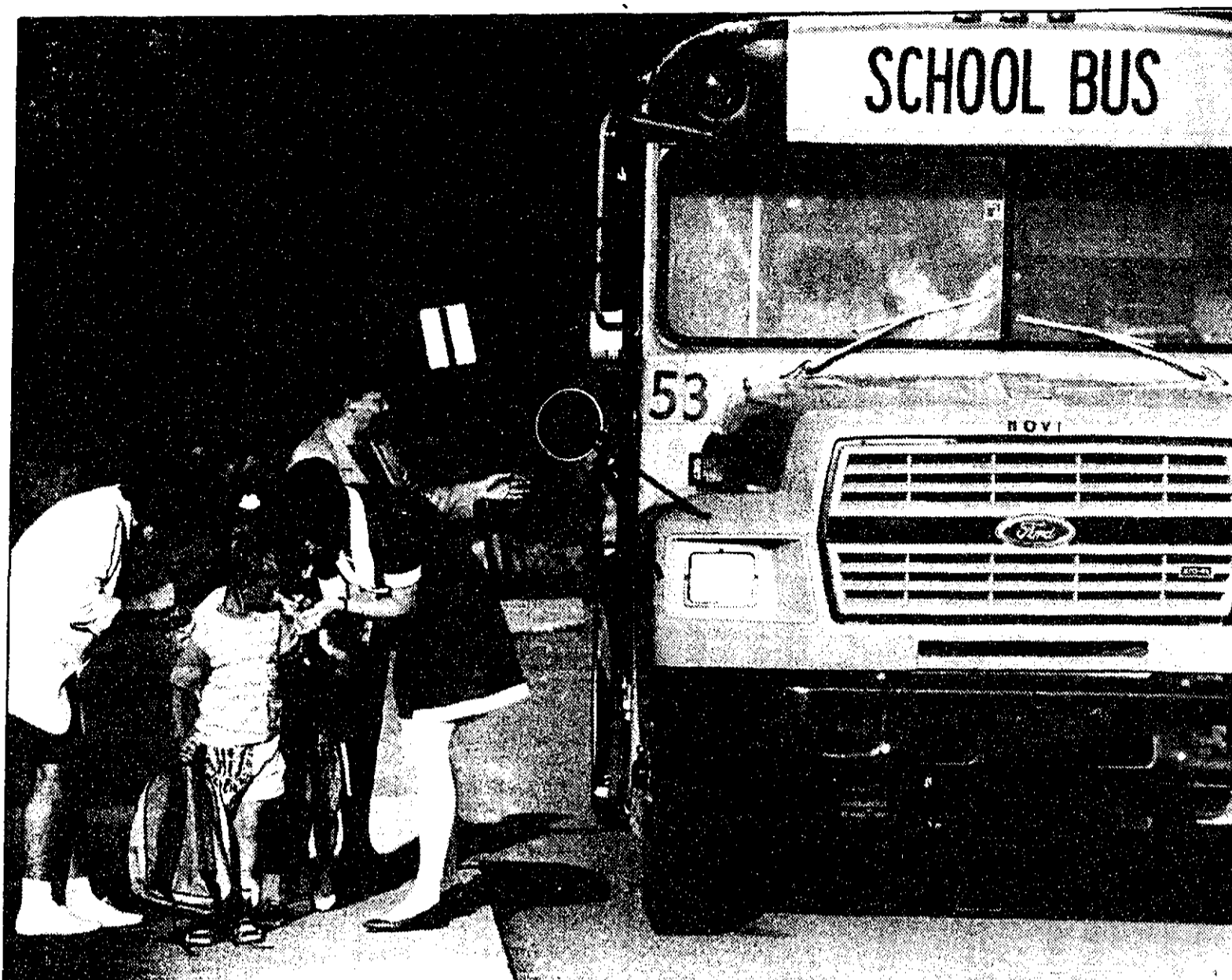


Photo by BRYAN MITCHELL

Cheat sheets

There is an awful lot to remember on the first day of school. And it is easy to forget a lot of it, too. To help these Novi Woods first graders out, teachers write their bus numbers on the back

of their hands so they can remember which bus to take at the end of the day. School began in the Novi district Tuesday with a half day of classes.

Arson fire destroys shed at church

Arson was the cause of a blaze that destroyed a tool shed at the United Methodist Church early Monday morning, according to the Oakland County Arson Investigation Unit.

Investigators found an accelerant had been spread on the floor of the shed to light the blaze, according to

Novi Fire Department Chief Art Lenaghan. The investigation of the incident has been turned over to the Novi Police Department.

The loss was listed as less than \$1,000. The shed contained only a variety of lawn care tools and a riding lawn mower, Lenaghan said. But the church's day care director told investigators there have been a number of incidents of vandalism at the church recent, mostly involving playground equipment.

The fire was reported at 5:53 a.m. Monday. By the time Novi firefighters arrived, Lenaghan said, the shed was "totally involved." Only one wall of the shed was still standing by that time, but it fell during the blaze.

He hopes Bush gets the picture

By SHARON CONDRON
Staff Writer

John Cooper figures if he puts a face on the nation's unemployment statistics the White House might take a closer look at the problem.

That's why the Northville photographer is shooting a group portrait of unemployed residents today in Detroit's Hart Plaza and sending poster-size prints of the photo to the White House and to the Democratic campaign headquarters.

Cooper, who is self-employed as the owner of Exposure Photographic, hopes the picture he sends to the White House will trigger President George Bush to look harder at decreasing the number of unemployed people in the state and in the country.

"I want to bring the faces of the unemployed to the White House. So rather than looking at the numbers, the government can recognize them as people," the 26-year-old photographer said.

"I don't like it as a president's thing. And I'm not trying to point fingers at anybody. All I really want to do is heighten the awareness."

Cooper said there are really no political motivations behind his wanting to photograph the unemployed. On the contrary the idea came to him while laying in bed one night thinking about what he could do to help reduce the nation's unemployment

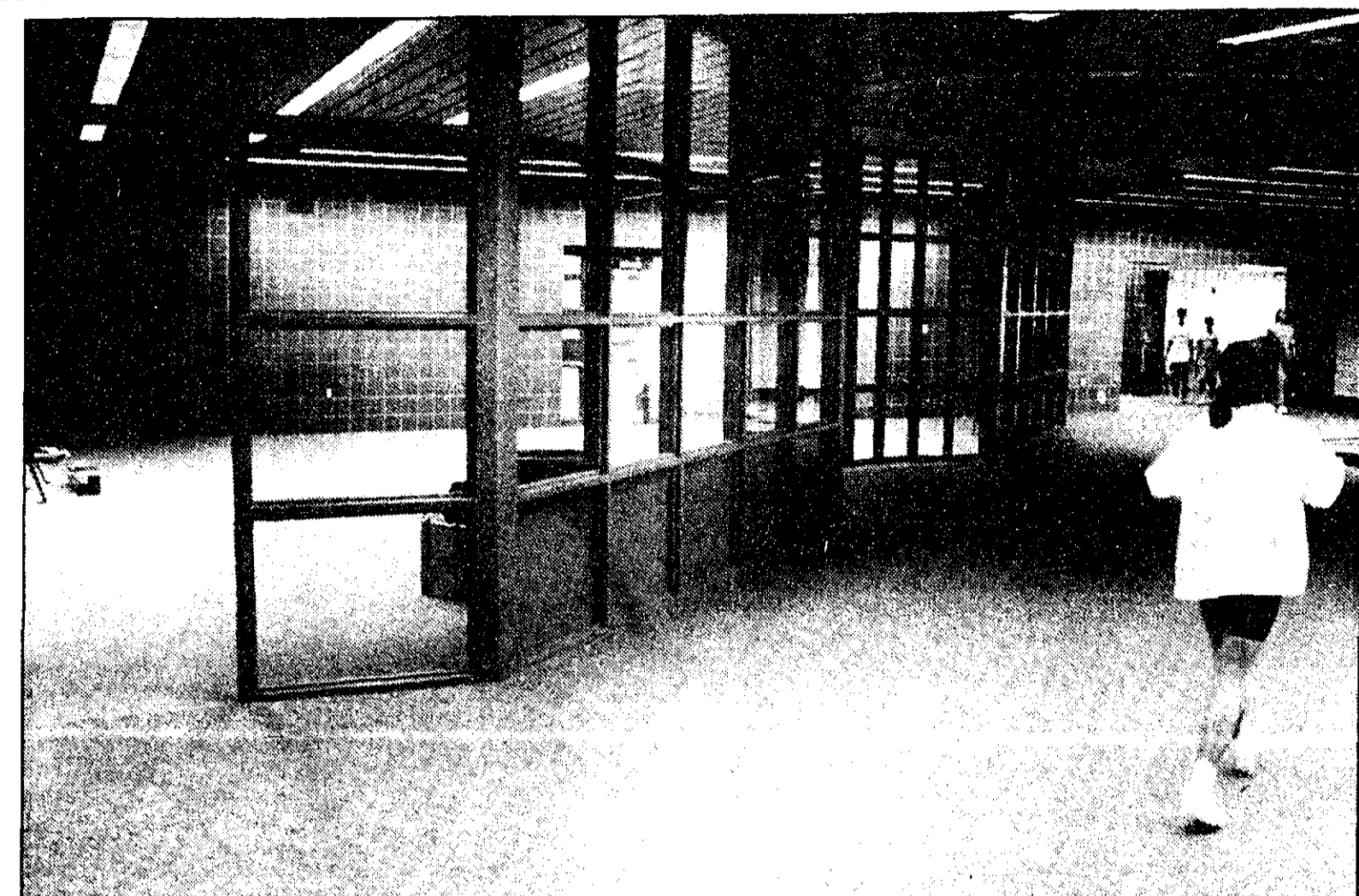


Photo by BRYAN MITCHELL

Up and running

Work still needs to be done on Novi's new Instructional Technology Center and much of the equipment has yet to arrive or be installed. But the building was in use with the first day of school Tuesday. Above, the tech center is viewed from the

main hallway linking the Novi Meadows and Novi Middle School buildings. The glass room will be the center's computer room, once all the machines are in.

Coast Guard offers safety courses for local boaters

The U.S. Coast Guard Auxiliary, Florida 12-05, is hosting a seven week boating safety class beginning Sept. 24 at 7 p.m. in Northville High School.

This course will include boat handling, seamanship, radio procedures, legal requirements and more.

A certification will be given upon completion of the class.

There is a \$24 fee for materials. Additional family members may attend at a reduced cost.

For information, contact Gerry Ganski at 478-3277 or Colleen Bailey at 349-4219.

Divers Incorporated

"THE DIVERS DIVE STORE"

PADI 5-Star IDC

UPCOMING DIVING CLASSES
PLYMOUTH BEGINNER CLASSES - 7 WEEKS
Monday, September 14th - 6:30 p.m. - 10:30 p.m.
Wednesday, September 16th - 6:30 p.m. - 10:30 p.m.

PADI CLASSES
Medic First Aid Class - September 8th & 10th
Rescue Class - September 15th thru 20th
Dive Master Class - September 21st thru October 4th

SAVE ON DIVING EQUIPMENT
WE WILL MATCH ANY ADVERTISED PRICE!
*Michigan Based Divers Only - Excluding TMAs

Instruction • Sales • Service • Rentals • Trips

In PMC Center
3380 Washtenaw Avenue
Ann Arbor, MI 48104
313-971-7770
FAX 313-971-2925

42295 Ann Arbor Rd.
Plymouth, MI 48170
313-451-5430
FAX 313-451-5428

Mature Driver? We've Reduced The Cost of Auto Insurance.

Our statistics show that mature drivers have fewer and less costly accidents than others. So, it's only fair to charge you less for your personal auto insurance.

Auto-Owners Insurance
Life Home Car Business
The No Problem People

C. HAROLD BLOOM INSURANCE
108 W. Main Northville
349-1252

Fifty can be your lucky number

Join the Huntington Club and register to win a trip to Las Vegas

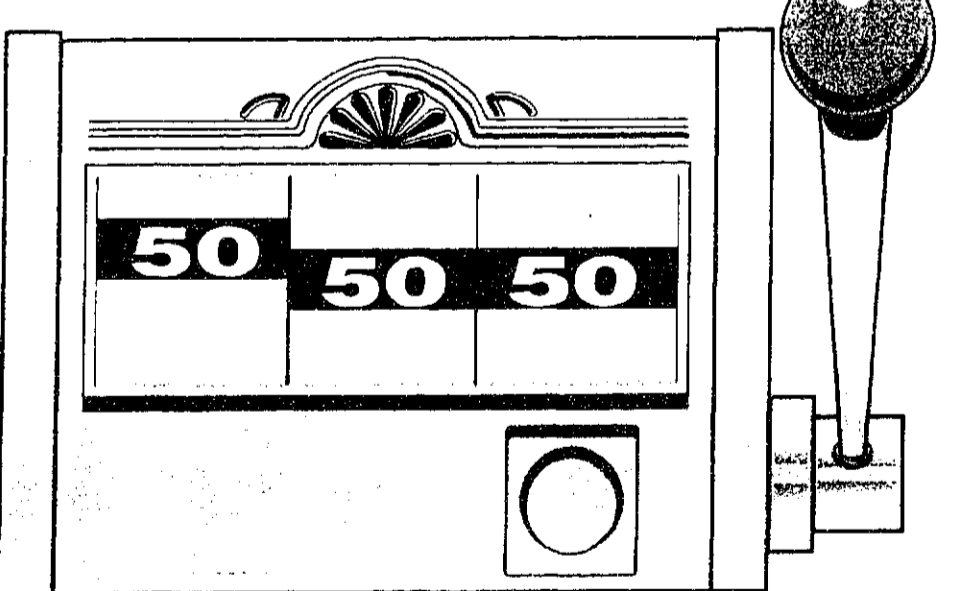
There's never been a better time to join the Huntington Club, Huntington Banks' exclusive club for customers 50 and over.

Besides recently lowering our qualifying age from 55 to 50, we've added new benefits, travel tours, special events and activities. And while we're on a roll, we're giving away a free trip to Las Vegas.

Just join the Huntington Club* between September 1, 1992 and November 30, 1992 and you're automatically registered in our Las Vegas Sweepstakes (drawing to be held December 11, 1992). Winners receive a one-week vacation for two including airfare**, deluxe hotel accommodations and \$200 spending money.

*Only new bank customers are eligible for the Las Vegas Sweepstakes. Bank employees are not eligible.

**Airfare courtesy of Cruise & Travel Connection. Travel must be completed prior to June 1, 1993. Not valid over holidays. Winners must choose from among three possible dates.



Every Huntington Club membership offers a winning combination of benefits including:

- Free checking • \$100,000 Common Carrier Insurance • VIAL OF LIFE Program • Eyewear Discounts • Exclusive Huntington Club Coupon Book • DOLLARSENSE Magazine

Call 1-800-642-INFO today for details about the Huntington Club - one of the best bets in town.

Win an exciting vacation in Las Vegas

New bank customers who join the Huntington Club can become eligible for the Grand Prize drawing for a one-week vacation for two in Las Vegas. Drawing will be held December 11, 1992. Just bring this coupon with you when you open your account at any one of our branch locations.

Name _____ (PLEASE PRINT)
Address _____
City _____ State _____ Zip _____
Phone () _____

NEW FLAVOR

Special Occasion

CHOCOLATE CHIP COOKIE DOUGH ICE CREAM..... \$1.99 HALF GALLON

Dairy Mart

PRICES EFFECTIVE THRU SEPT. 12, 1992 AT PARTICIPATING STORES.

bryant

As low as \$2950 COMPLETELY INSTALLED

Winterize. Summerize. Economize.

Warm up, roof off and save a bundle with Flame's most economical furnace and air conditioner combination. You'll get quiet performance, durability, and energy-saving efficiency. You'll get Flame's Super Warranty—including 2 years parts and ser-

FURNACE, SAFETY AND ENERGY CHECK \$44.50

3:1 DOLLAR FOR DOLLAR NATURAL GAS HOLDS A THREE-TO-ONE PRICE ADVANTAGE OVER ELECTRICITY.

FLAME

FURNACE COMPANY Since 1949

DETROIT 527-1700 WARREN 574-1070 TROY 524-1700 LIVONIA 427-1700

ANGLIN SUPPLY

GARDEN CENTER • BULK MATERIALS

SPRING BULBS FOR FALL PLANTING HAVE ARRIVED!

CYPRESS MULCH \$36.00 (9 bags) 1 cu. yd.

TOPSOIL • 50/50 • PEAT • AGGREGATES
PERENNIALS • SHRUBS • TREES

349-8500 SUE ANGLIN
42750 GRAND RIVER • NOVI

WANTED HANDYMAN

FREE ROOFING INSTALLATION WORKSHOP SATURDAY SEPTEMBER 5th 10:00 a.m.
Haggerty Location Only

Learn the facts on fiberglass shingles from our Owens Corning roofing specialist. Everything from shingle application, tools & techniques will be demonstrated.

HAGGERTY LUMBER
2055 Haggerty Road
624-4551

WORKSHOP COUPON
CLASSIC PLUS 3-IN-1 FIBERGLASS ASPHALT SHINGLES \$79 17.37 SQUARE
*Many colors in stock. Pricing good thru 9/25/92.

"More activities... More friends... Fewer worries..."

That's why we chose Oakbrook Apartment Homes.

It's a retirement community, that's anything but retiring. Oakbrook Apartment Homes offer spacious apartments with housekeeping included, so we can do the things we want to do. And they have specially planned outings, interesting classes and social events, so there are always things to do and new friends to meet. That's why we like Oakbrook, it's retirement living that offers us more.

If you're looking for a retirement community that lets you live how you want to live, and keep your independence, discover Oakbrook Apartment Homes in Dearborn. Oakbrook provides residents with 24-hour security, transportation, banking services, outstanding dining, and specially planned outings. And with continuing care services available through Oakbrook Common, you'll have assistance with daily living needs, or long term care, if you ever need it.

Oakbrook Apartment Homes are part of the Oakbrook Common Retirement Community. Phase II construction has begun. So call 1-800-642-HOME for more information or send in the coupon below.

Oakbrook residents Ruth File and Marjorie Fairney

Oakbrook Apartment Homes

A Community For Active-minded Seniors

Oakbrook Common Retirement Community is a subsidiary of Oakwood Health Services, a non-profit corporation.

Please send information on Oakbrook Apartments Homes.

Name _____
Address _____
City _____
State _____ Zip _____
Phone () _____

Oakbrook Common Retirement Community
1654 Rotunda Drive Dearborn, MI 48120
1-800-642-HOME



Still setting up

Classes started Tuesday and for all intents and purposes the school year is underway. But that by no means should be taken as an indication that everything is completely ready. The school district was still moving into its new technology center, which links Novi Meadows and the Novi Middle School, this week as classes started. Above, parent Cindy D'Agostino as an indication that everything is completely ready. The school district was still moving into its new technology center, arriving for their first day of classes.

Photo by BRYAN MITCHELL

Northville denies Lorenzo rehearing

By BOB NEEDHAM Editor

The next move — if any — is up to a Novi homeowner in a running battle with the City of Northville over drainage problems on her land.

The Northville City Council Monday voted unanimously to deny Laura Lorenzo's request for a rehearing of her case before the Board of Zoning Appeals, and to take no further action on her complaints.

The Northville council met in a closed session Monday night to discuss the situation. After the private discussion, the council voted unanimously to consider the issue finished.

Lorenzo's Galway Drive property — within the City of Novi, but backing up to the Northville city limits — suffers from flooding, and she points to undersized culverts in Northville's Pleasant Hills subdivision as the culprits.

Early in July the city Board of Zoning Appeals rejected a request from Lorenzo to overturn approval of the Pleasant Hills culverts.

John Allan Harnden, a longtime Novi resident whose local family history dated back to the 1930s, died Aug. 30 at the age of 80.

Harnden was the former owner/operator of A's Market, a grocery that was once located at the southeast corner of Grand River and Novi Road. During his many years in the community, Harnden was involved in the Chamber of Commerce, the Novi Methodist Church, the Novi Oddfellows, Order of the Eastern Star and Free Masons, Northville Chapter.

Harnden's grandmothers, Julia and Ora Charles Harnden, were among the early farm owners in Novi. His parents, Elta and John Harnden, also lived in Novi.

In addition to his daughter Pamela, he is also survived by his children Linda, Susan, Eileen and John Harnden. Also surviving are five grandchildren and three great-grandchildren.

Memorial services were held Wednesday, Sept. 2 at Lynch and Sons Funeral Home in Walled Lake.

A bit of Novi dies with old-timer

By CRISTINA FERRIER Staff Writer

School and trained at Kroger as a meat cutter. He later apprenticed as a tool and die maker with the Cadillac Motor Company and later worked at Copa Tool Company.

He received a citation during World War II for his contributions in designing new welding techniques for torpedoes.

Harnden was one of those people that other longtime residents refer to when they talk about "Old Novi."

Obituaries

DOROTHY MARIE SILVESTRI

Dorothy Marie Silvestri, 65, of Novi died at St. Mary's Hospital on Sunday, Aug. 30 of cancer. She was born March 29, 1927 in Advance, Missouri to John Gordon Williams and Susie Mae Gough.

She was a secretary for K mart. Survivors include her children, Janice Martin, Judith Albert, Karen, Kathy Young and Lawrence; her sisters, Elizabeth, Cecelia, Margaret and Emma Walker; her brothers, Joseph, Gordon and Doug, and seven grandchildren.

A scripture service was held Tuesday, Sept. 1 at 7 p.m. Funeral services were yesterday, Sept. 3 at Holy Family Church. Fr. Jerry Slowinski officiated. Interment was at Holy Sepulchre Cemetery.

Call GREEN SHEET CLASSIFIED (313) 348-3022

\$5 OFF \$5 off a large pizza with three or more items not valid with any other coupon or special Offer expires September 20, 1992

Shield's RESTAURANT, BAR, PIZZERIA

SOUTHFIELD Telegraph at 10 Mile 356-2720
NOVI Grand River East of Novi Rd. 349-2110
TROY Maple West of Crooks 637-3131
STERLING HEIGHTS Van Dyke at 16 Mile 979-9270

AT WORK... AT PLAY... A PIZZA AT SHIELD'S WILL MAKE YOUR DAY!

MEET ERNIE HARWELL and P. BUCKLEY MOSS

Wednesday, Sept. 30th 4:30-8:30 p.m.

Ernie and Pat will greet fans and collectors as they personally inscribe Plate pieces, including a special Ernie Harwell print created to benefit the Ernie Harwell Foundation.

more than 300 pieces on display

FRAME WORKS 833 Penniman • Plymouth 459-3355

Cleo Laine, John Dankworth with the Ann Arbor Symphony September 12 Hill Auditorium, 8 pm Ultimate Tailgate Party 5:30-7:30 Concert tickets available at Ticketmaster, 645-6666 Party tickets: call 994-4801

The Versatile One!

WOODS

Eight different tractors. Five sizes of mower decks and a list of easy-on, easy-off attachments make the Woods mow'n machine an "all-season" performer.

Woods mow'n machine... come in for a demonstration

CANTON TRACTOR SALES, INC. 42045 Michigan Ave. Canton, MI 48111

NICK'S ALREADY ON THE BALL AND GYMBOREE PLAYS IT UP!

During every 15 minute age appropriate class, children 3 months through 4 years old and their parents enjoy GYMBOREE fun and activities. Housed in trailers, over 40 pieces of special play equipment, plus parenting, tips and resources. Come play it up!

Your Kids Gets More Out Of Childhood At GYMBOREE

737-2888

CUTTING DRINK DRIVING

WXYZ/DETROIT

WIN! 7 Makes Your Morning!

It's all part of Channel 7's brand-new morning lineup. Starting at 9:00, Detroit's favorite duo has a whole new look... Company, with John Kelly and Marilyn Turner. At 10:00, your long wait is over. Regis & Kathie Lee are back in the mornings where you want 'em!

Then at 11:00, the all-new Jenny Jones puts her finishing touch on your winning lineup.

Watch all three shows and you can really win big! Every day, starting Monday, September 14th, we'll reveal one word of a three-word phrase, call us at 313-298-7900. If you're the 7th caller with the correct phrase, you win \$7,000 instantly!

Now how's that for Makin' Your Morning!

Company 9AM
Regis & Kathie Lee 10AM
Jenny Jones 11AM

FRANK'S NURSERY & CRAFTS

GRAND OPENING!

Of Our New West Bloomfield Store

7300 Haggerty Rd., north of 14 Mile Rd. • 661-5737

Sale Starts Tomorrow, Sept. 4th at 9:00 am

Great Specials at Our New Store! Stop by And Save!

FREE COFFEE & DONUTS at our New Store!	1.77 Reg. 2.99 Big Value Craft Beads By Darcie. Many beads per pack.	1.99 Reg. 3.49 4oz. Eucalyptus Makes a great air freshener.	2.99 Reg. 4.99 ValuePak Friendly Plastics Your choice of several colors.	1.99 Reg. 3.99 Garden Mums in 6" Pots Top quality, extra large plants.	FREE To the first 2000 customers African Violet In a 4" pot. Limit one plant per customer. Friday only. • 4 1/2" Rubbermaid Accent Pot. Reg. 1.49 77c
FREE CRAFT DEMONSTRATIONS Wed. and Sat. from 9am to 1am & 2pm to 4pm through Sept. 26, 1992	1.99 Reg. 3.99 16" Grapevine Wreath Decorate with flowers & ribbon.	99c Reg. 1.99 Delta Ceramcoat Acrylic Paint Squeeze bottle. Choice of colors.	2.99 Reg. 4.99 All Seasons Mixed Bird Food Favorite of many birds. 20-lb. bag.	99c Reg. 2.99 Swiss Farms Potting Soil For all your potting needs. 20-lb. bag.	

Expert Quality The Finest Quality Plants Available! Our buyers walk the fields of the finest growers to hand select the plants they purchase. And they're backed by our 100% Satisfaction Guarantee, so you can shop with confidence! **GUARANTEED**

Free Expert Advice Fall is for Planting! Here's Why... Fall's cooler weather and generally adequate rainfall is essential to beginning growth. This type of weather encourages the root system to establish while the winter months ahead. The result is a strong and healthy plant structure in spring.

Free Info Center FREE! Fall Landscape & Craft Guide with Valuable Coupons! Written by Frank's experts, this informative guide is full of tips that will save you time, energy and money. You'll find it and other free literature at our info center.

NEW PET CARE

At our West Bloomfield Store Our brand new Pet Care Department is stocked with over 3800 items... nutritional foods, treats, fun playthings and much more...all at great savings! For example:

2 5-lb. bags \$5 Reg. 3.49 bag
Country Prime Dog Biscuits
Multi-flavored. Your dog will love 'em and you'll love the savings!

Everyday low price **22.99**
Pro Plan Adult Dog Food
Big 40-lb. bag. Great nutrition for your best friend.

PRO PLAN

All stores celebrate with these specials!

From Our Landscape Center!

FALL LANDSCAPE SALE!

50% off Regularly 6.99 & up
All Landscape Shrubs
Our entire selection of trees, shrubs and evergreens at big savings now... nature's perfect time to plant!

Craft Super Buys!

1.99 ea.
Frank's 4-oz. Fabric Paint
Your choice of 18 different colors. Everyday low price.

2.99
Mini Trigger Glue Gun
Choose hot melt or low-temp guns. A must for crafters!

2.99
Silk Mum Bush
14 beautiful blooms. 6 colors. Great addition to any decor!

FRANK'S SUPER BUY!

FRANK'S SUPER BUY!

Store Hours: Monday thru Friday 9 to 9, Saturday 9 to 8, Sunday 9 to 6. Open Labor Day 9 to 6

Detroit (Greenfield) 584-4373 Detroit (E. 7 Mile) 371-4970 Warren (Van Dyke) 573-4433 (10 Mile) 755-7041 (8 Mile) 776-5541 Fraser 791-4770 Eastpointe 771-6050 St. Clair Shores 294-0960 Clinton Township 263-0303 Sterling Heights 254-2550 Ulca 739-5339 Auburn Hills 852-0122 Clarkston 620-0290 Pontiac 673-0050 Rochester 375-9700 Clawson 435-0636 Birmingham 647-2242 Oak Park 548-2400 Farmington 476-0210 Livonia (Schoolcraft) 937-0391 (Five Mile) 591-3930 Dearborn Heights 274-2727 Westland 728-8230 Canton Township 981-3193 Lincoln Park 928-0209 Southgate 284-8812 Woodhaven 675-5856 Ann Arbor (Washtenaw) 971-2040 (N. Maple) 663-5255

*Craft Items Not at This Store *Seniors Wednesdays get 10% off your total merchandise purchase. Must be age 60 or over.

Schools pay out college tuition

By SHARON CONDRON
Staff Writer

Northville High School seniors who are eligible to take college courses while still enrolled at the high school can thank the State of Michigan for mandating that a portion of their tuition will be paid by the district.

The August 15 deadline for notifying seniors who were eligible for the dual enrollment program has come to pass. High school officials said they identified and notified the 290 seniors who were eligible for enrollment in the state mandated dual enrollment program which was made possible by legislation enacted by Gov. John Engler on October 11, 1991.

Under the law, high school seniors are now afforded the opportunity to take college level courses in their last year provided they meet the state's requirements for eligibility in the dual enrollment program.

Those requirements are that students must be seniors who have

earned a minimum of 18 credits prior to the onset of their senior year. The student must elect a course at the college that is not offered by the high school and that course must be approved before enrollment by the high school principal. The student must have a minimum of one core requirement to complete in order to be eligible.

While that maybe good news for students who want to earn college credit as a senior, it's bad news for the district which will have to pay a portion — \$50.00 — of the student's tuition. Quick multiplication indicates that if every Northville student who is eligible to enroll in the program does enroll, the district could pay an estimated \$14,500 in college tuition bills.

On the brighter side, the good news for the district is that it isn't its responsibility to bus students to the college of their choice nor can students enroll in more than one college course per semester during the school year.

Local districts were notified earlier

this year by the State Department of Education that they had to inform eligible students of the dual enrollment program by August 15.

That should have given the 290 potentially qualified seniors at Northville High School ample time to plan their fall and winter schedules should they opt to enroll in a neighboring college or university. But when Northville school administrators approached Schoolcraft College officials with the notion of dual enrollment, the idea was news to college representatives.

For board treasurer Robert McMahon this dual enrollment program is just the latest in a string of state mandated programs that shifts the financial burden of public education off the backs of the State and onto the shoulders of local districts.

"This concept has been in Lansting for the past two years," he said. "It's all part of the Governor's plan for the School of Choice notion. Only this part is locally funded in contrast with the Schools of Choice plan we had before us in June which was a state

funded plan.

"But even that (funding for the Schools of Choice) was dropped from the State's school aid bill . . . Public education is in a very sad state right now."

Talk of the program at Monday's meeting was paradoxical. While most agreed the premise of the program offers students a better opportunity for learning, they argued that it does so at the expense of the district's already overextended budget.

It was that notion that prompted residents who attended the meeting to ask the board to look into privatizing the schools in an effort to flee from state mandated programs that put undue pressures on the school budget. Other parents suggested avoiding the issue by not implementing the program at all and taking the chance at being reprimanded by the state.

That notion failed for lack of support by board members who said they weren't willing to risk being penalized by the State for not executing the plan.

Education Notes

Free programs: The Oakland Technical Center will be offering free programs to qualified students in education, training, retraining, business and industry partnerships and more. Classes will be held at Oakland Technical Center's southwest campus, 1000 Beck Road, Wixom, Mich 48393. Call Richard Briggs, Jane Sloat or Gary Sundquist at 624-6000 for more information.

Loss estimating: Oakland Community College's Business and Professional Institute will present a complete course in Basic Loss Estimating at the Orchard Ridge Campus this fall. The series, offered in cooperation with the N.J. Kott Co., meets for 10 successive Tuesday evenings, beginning Sept. 15. Hours are 6 p.m. to 9:30 p.m.

Basic Loss Estimating is designed primarily for claim personal employees by insurance and related service organizations, as well as for repair techniques. A certificate for 35 instructional hours (3.5 CEU equivalent) will be awarded upon completion of the course.

The registration fee for Building Loss Estimating is \$325, covering instruction, handouts, and binder. The text, *How to Estimate Building Losses and Construction Costs*, by Paul J. Thomas, will be available for approximately \$22 from the instructor and the first class session.

For further information, or to pre-register, call the OCC Business and Professional Institute, 540-1511.

Crafters sought: Schoolcraft College is now accepting applications for crafters to feature their work in the College's Fall Craft Show, Nov. 14 and 15. Different booth sizes are available. The show will be held from 9:30 a.m. to 4:30 p.m. on Saturday, and 11 a.m. to 4 p.m. on Sunday in the College's Physical Education Building.

Class choices are cut back for Northville High students

While high school students were busy passing the lazy days of summer away, Northville High School administrators were busy chipping away at course sections and limiting the number of options this year's high schoolers will have to choose from.

High School Principal Thomas Johnson said students registering for courses for the 1992-93 school year this week found fewer alternatives on their class schedules than in previous years.

Students registered Monday through Wednesday. As a result of the failed millage increase and teacher layoffs this year's high schoolers can expect to find larger classes, fewer course sections, and very few schedule adjustments made for them this year, he said.

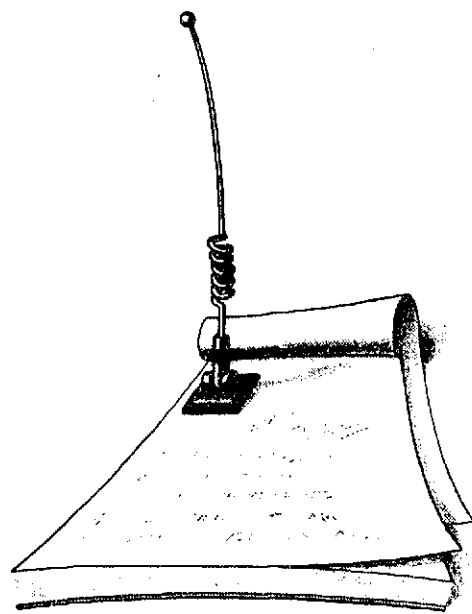
Johnson said administrators have cut 7.3 teachers from this year.

In spite of all the cuts made to du-

PLICATE sections of specific subjects or classes, school officials said they were fortunate enough to not have dropped any course electives from the curriculum because of the district's finances. If a class was dropped, school officials said it was because there wasn't enough student interest in taking the course or because the number of students that registered for it didn't match with the minimum required to keep it.

"We didn't cut any classes; just sections of courses where we had more than one section," Johnson said. "If a course was eliminated, it was only because that teacher was laid off. But in most cases, another teacher picked up the class."

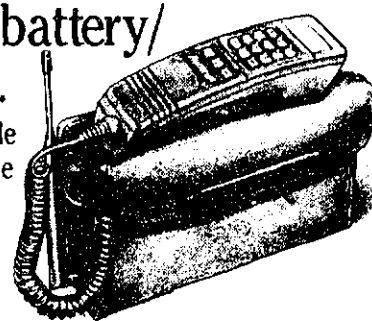
For example, Bo Hall, a journalism teacher at the high school was one of nine teachers who were laid off. In that instance school officials saved the course by having another English teacher pick it up for the new school year.



Rent the complete daily planner.
The Ameritech Mobile Convenience
Rental Package.

Get tote phone rental, monthly airtime access, battery/charger and activation for just \$33.90* a month.

Now Ameritech Mobile offers a way to enjoy the day-to-day convenience of a mobile phone without buying costly equipment. Our one low, all-inclusive price covers tote phone rental, monthly airtime access, battery/charger and activation. Or, if you prefer, rent a Motorola AC2250 installed phone with glass-mount antenna, monthly airtime access and activation for the same price.



Call 1-800-MOBILE-1 for easy rental and details on other rental packages priced to fit any budget.

ALMONT Cephone Communications 215 Branch St. 798-8881	BRIGHTON Henderson Glass	DEARBORN HEIGHTS Henderson Glass	ABC Warehouse Henderson Glass Highland Superstores	MADISON HEIGHTS Midwest Electronics 25831 John R. 543-7700	PORT HURON ABC Warehouse Henderson Glass	Highland Superstores	TAYLOR Express Paging Systems 20127 Ecorse Rd. 382-CELL	WESTLAND Highland Superstores
ANN ARBOR ABC Warehouse Henderson Glass Highland Superstores	CANTON ABC Warehouse Henderson Glass	EASTPOINTE Ameritech Mobile Sales & Service Center 22371 Gratiot Ave. 777-8007	FRASER Henderson Glass	MT. CLEMENS Metro Cell 36884 Harper 790-5900 1-800-LEADER-1	REDFORD ABC Warehouse	SHELBY TOWNSHIP Henderson Glass Highland Superstores	TROY General Cellular Sales 2787 Rochester Rd. 524-3232	YPSILANTI Future Sound 3889 Carpenter Rd. 971-8784
AUBURN HILLS Metro Cell 2560 N. Squirrel Rd. 377-3333 1-800-LEADER-1	CENTRALINE Highland Superstores	FARMINGTON ABC Warehouse Henderson Glass	HIGHLAND PARK Highland Superstores Henderson Glass	LATHRUP VILLAGE Ameritech Mobile Sales & Service Center 26911 Southfield Rd. 567-8855	ROCHESTER The Sound Advantage 908 Main St. 656-1611	SOUTHFIELD Henderson Glass Cellular 24059 W. 10 Mile Rd. 359-2100	TROY General Cellular Sales 2787 Rochester Rd. 524-3232	DASH MOBILE ELECTRONICS
BERKLEY Henderson Glass	DETROIT Ameritech Mobile Sales & Service Center 3334 E. Jefferson Ave. 259-5007	FARMINGTON HILLS First Cellular 32720 Northwestern Highway 592-3870	HIGHLAND PARK Highland Superstores Henderson Glass	LYNDIA Metro Cell 31122 W. Eight Mile Rd. 473-0331 1-800-LEADER-1	NOVY First Cellular 43450 Grand River 380-8338	ROCHESTER HILLS Ameritech Paging Services 2951 S. Rochester Rd. 1-800-523-8773	SOUTHGATE ABC Warehouse Highland Superstores	WARREN Dash Mobile Electronics Henderson Glass
BIRMINGHAM Finishing Touches 235 Pierce St. 645-2236	DEARBORN ABC Warehouse	FLINT Ameritech Paging Services 64029 Miller Rd. 1-800-232-9242	FRASER Henderson Glass	PLYMOUTH Ameritech Mobile Sales & Service Center 620 W. Ann Arbor Rd. 451-0720	ROYAL OAK Royal Radio Sales & Service 612 N. Main St. 548-8111	STERLING HEIGHTS Metro Cell 5963 E. 14 Mile Rd. 539-4660 1-800-LEADER-1	WATERFORD ABC Warehouse Dash Mobile Electronics Henderson Glass	WEST BLOOMFIELD Henderson Glass

Connect with the leader.
AMERITECH MOBILE

* Twelve-month minimum rental contract. Customer must maintain Ameritech Mobile service for length of contract. Glass-mount antenna with AC2250 mobile phone only. Early cancellation fee and other restrictions apply. Does not include installation cost or programming fee if applicable.

© 1992 Ameritech Mobile Communications, Inc. All rights reserved.

IMAGINE...

Organized Pantries
Spacious Garage Storage
Increased Office Space

NO CLOSET CLUTTER

SPECIALTY STORAGE SYSTEMS



**CLOSET
MAID**

CALL 937-3450

Mon.-Fri. 8:00 a.m.-5:00 p.m.

For custom designed ventilated shelving
to fit your needs!

BEDROOM CLOSETS • WALK-INS • KIDS ROOMS • LINEN CLOSETS
PANTRIES • UTILITY ROOMS • BASEMENTS • LAUNDRY AREA
GARAGE • WORK ROOM • OFFICE • ATTICS

FREE IN-HOME ESTIMATES!

10% DISCOUNT WHEN YOU MENTION THIS AD!!!

Laurel FURNITURE, INC.

Setra "I want my Setra!"

**Wake-Up
Specials**

**PERFECT SLEEPER -
15 Year Deluxe Warranty**

Twin Each Piece **\$129.88**
Sale Price
Full (Ea. Piece) **179.88**
Queen (Set) **399.88**
King (Set) **559.88**
*See store for details

DELUXE QUILT

Twin Each Piece **\$69.88**
Sale Price
Full (Ea. Piece) **99.88**
Queen (Set) **249.88**
King (Set) **319.88**

**LUXURY FIRM -
15 Year Warranty**

Twin Each Piece **\$99.88**
Sale Price
Full (Ea. Piece) **129.88**
Queen (Set) **219.88**
King (Set) **419.88**
**See store for details

Most sets ready for immediate
pick-up & delivery!

*Sold in sets only for your total comfort

Lay-Away Available
584 W. Ann Arbor Trail • Plymouth, Michigan 48170 (313) 453-4700
Open Daily 9:30 - 6, Thurs. & Fri till 9, Sat. till 5:30

NOVI HIGHLIGHTS:
Novi Parks and Rec offers variety of fall classes/2B

FAN CLUB:
George Burns lovers want a sandwich named after him/3B

NOVI NEWCOMERS:
Annual kick-off event will feature a Spanish theme/4B

CREATIVE CLASSES:
Center for Creative Studies opens new Novi location/4B



At 12, Dennis Wilcox learned his trade from his father. Now as a glass blower with Planet Neon in Novi, Dennis, 57, makes neon signs. It took him seven years to learn the craft he's been perfecting since 1949. What he likes most about his job is that his assignments vary every day. Each sign is hand-crafted and is the product of his own artistic expression.

DENNIS WILCOX
of Planet Neon in Novi

"I got all my training from my Dad," Dennis said, looking back on how he got his start. Now after five years on the job, the Novi-based sign-maker has no regrets in learning the skilled craft.
"It is something different every day," Dennis said. "It is whatever they throw at me."

LABORERS OF LOVE

Portraits from the community gives cause to pause during the Labor Day weekend

In observance of Labor Day, we've randomly singled out a half-dozen people who we feel mirror the portrait of the traditional American trades person. There is no particular rhyme or reason to our selections, nor a common thread that stitches them all together.

They come from all walks of life and different backgrounds. In effect, these are just everyday people doing everyday jobs. Each has made a career out of doing what they do best. And doing it better than the rest. It's small-town living, and it fits our definition of the American dream.



Most people know John by the title of "Farmer Beemer," the man who tends to the farm and petting zoo at Maybury State Park. Children who visit the park call him "friend."
This 46-year-old has made a life out of his love of farming and of the outdoors. One day, he said, he hopes to retire with his wife on live out his dream on a farm.
"Farming in general is what I've always enjoyed doing," he said. The highlight of his job at Maybury is interacting with the children who visit the park, he said.
"I love the expressions on their faces," he said.

JOHN BEEMER
of Maybury State Park in Northville



When Selma Schnute looks back on her musical career, she smiles. After more than 50 years of giving private music lessons to thousands of adults and children, she hasn't lost an ounce of enthusiasm for her job. Now 76, she looks forward to at least another decade of teaching music.
"I'm a teacher because my father was a teacher," she said. "I'm glad that I still have this at this age and as long as my mental faculties allow me too, I'll continue to teach music because I need this."

SELMA SCHNUTE
of Schnutes Music Studio in Northville



In 1981 George Miller bought the family business from his father. Today George, 55, said buying Miller's Custom Bumping and Painting in Northville from his dad was a sound investment. The business has supported three generations of the Miller clan.
"My mom and dad lived through it and brought us up on it," Miller said. "I had two kids and it's paid for their schooling. We aren't getting rich, but we are doing it."
"It is the only thing I know and the only thing I've ever done. I enjoy getting up and coming to work in the morning."

GEORGE MILLER
of Miller's Bumping and Painting in Northville



Jean Utley is truly a jack-of-all-trades at Northville's Warren Products. Jean, currently the vice president of sales, has been with the company for three decades. During her tenure there, she's seen the company through three different owners and has worn a variety of hats in the firm.
"I went where I was needed," the 65-year-old sales executive said about the years she spent on the job doing anything from clerical work to blueprint reading to welding to driving a truck.

JEAN UTLEY,
of Warren Products in Northville



Dee Taylor knows her menu. She's at Star Manor to serve the residents healthy, well-balanced meals. But she's been known to serve up some special requests and satisfy nearly every whim residents at the nursing home crave.
Dee's worked at larger homes in the past, but she prefers the homey atmosphere at Star Manor, where everybody's on a first-name basis.
"I like working in the smaller homes because it's a closer-knit group of people," Dee said. "Here you can really relate to the residents. You know their names."

DELOIS (DEE) TAYLOR
of Star Manor in Northville

Photographs by Bryan Mitchell

Recreation

the NOVI
NEWS
10B
THURSDAY
September 3,
1992

Softball contest raises funds

By CINDY STEWART
Special Writer

We have all participated in the typical summer fund-raisers — golf outings, carnivals, raffles and fun runs. Well, the Michigan Chapter of the Crohn's & Colitis Foundation of America did something different for a fund-raiser with help from the City of Novi.

The First Annual "Chicago Style" softball game was held Sunday, Aug. 30, to benefit CCFA research and education. A team made up of city officials called the "Novi Specials" played the first two innings against the WRIF "Fighting Flamingos" with Mayor Matt Quinn throwing out the first ball on the diamond located behind Mr. B's Farm on Novi Road, just north of Ten Mile. Mr. B's Farm team, which included some of its popular entertainers, played the next three innings.

"Chicago Style" Softball is played with a 16-inch bright orange ball. This makes it nearly impossible to hit one out of the park, but provides great entertainment for spectators. The WRIF team was impressive with radio personalities and Mr. Stress doing the play by play. But, Mr. B's Farm team may have the edge since they sponsor Chicago-Style softball coed teams during the summer and fall, and winter snowball tournaments together with Novi Parks and Recreation.

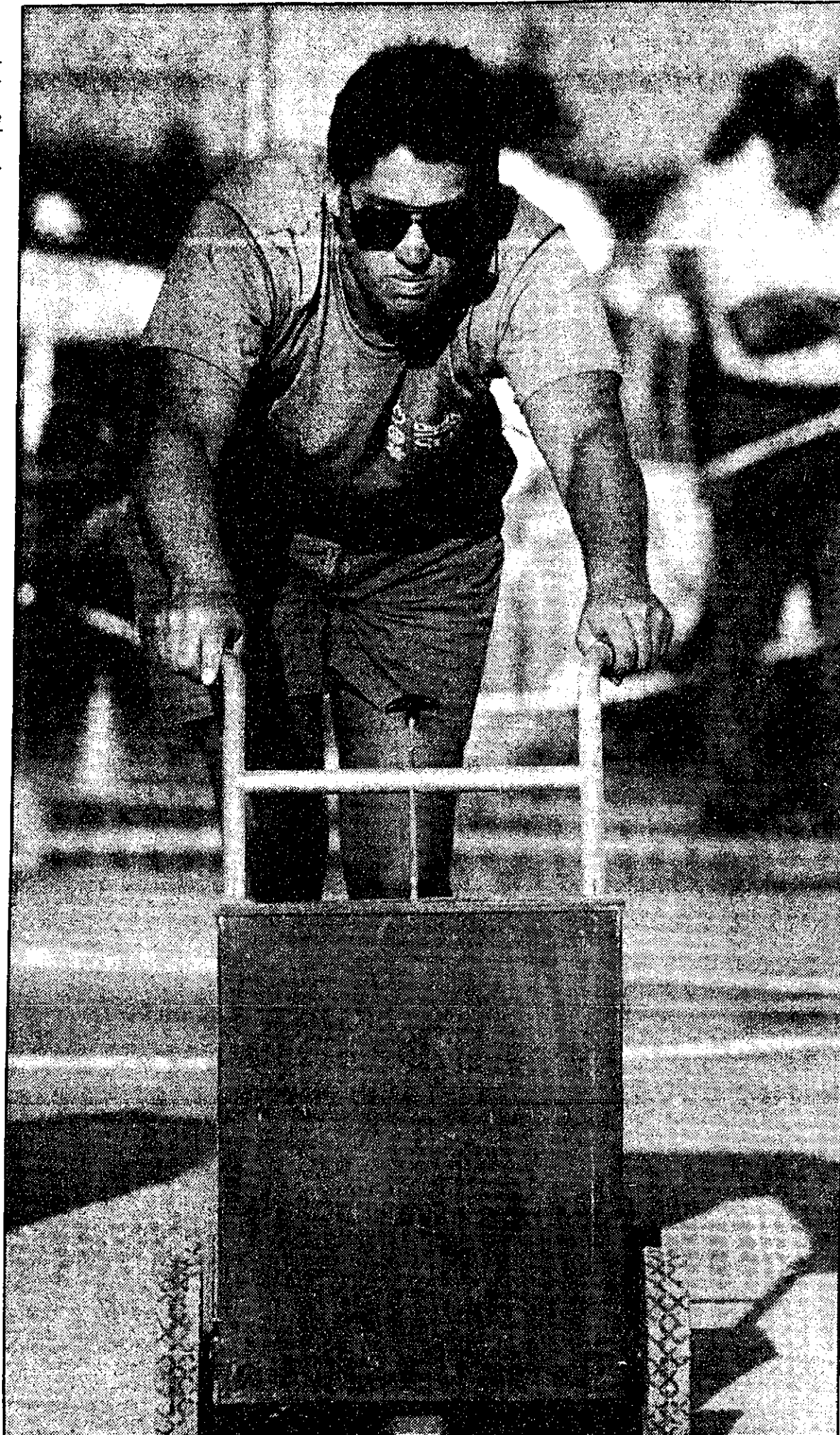
Softball wasn't the only entertainment for the day. Other activities included a raffle with many exciting prizes, and a Super Sports Memorabilia Silent Auction. Items to be auctioned include a chance to be at home plate with Cecil Fielder when he is presented with the CCFA Tribute at Tiger Stadium Sept. 6. This item also includes box seats and a post-game pizza party at Tiger Hall.

Hot dogs, chips and pop was sold throughout the day with all proceeds to benefit CCFA research and education programs. Mr. B's Farm is also going to donate a portion of the day's beer and wine sales to CCFA.

This fund-raiser is very special to the Crohn's and Colitis Foundation because while the day's activities may be fun, Crohn's disease and ulcerative colitis are serious, chronic, inflammatory diseases of the small and large intestines. Some two million Americans, or one in 100, many of them children, are affected with Crohn's disease and/or ulcerative colitis. These numbers are on the rise.

The Crohn's & Colitis Foundation of America is the only national voluntary health agency devoted exclusively to researching the cause and ultimate cure of Crohn's disease and ulcerative colitis. This is so important because Crohn's and colitis strike most frequently in the prime of life, between the ages of 15 and 35.

Cindy Stewart is the Director of Public Information for the City of Novi.



The First Annual "Chicago Style" softball game was held Sunday, Aug. 30, to benefit CCFA research and education.

Prevention best medicine for tooth decay



Dr. Kathryn Hoppe, D.D.S.

colds, sweets or pressures.

When a tooth becomes painful or sensitive, a large cavity may already be present. At this point, the dental treatment becomes more involved than a simple filling. When the decay gets near or into the tooth nerve, the tooth may need a root canal, post, crown (cap) or a very

Health tips

A common misconception is that a tooth doesn't have a cavity unless it hurts or is sensitive. This is actually far from the truth. Most decaying teeth have no unusual sensation at all. It is when the decay is in the advanced stages that the person feels the sensitivity to hots,

large filling. The tooth could also fracture or break off below the gum line to the extent that it cannot be restored and the only alternative is extraction.

Dental X-rays are a valuable key in early diagnosis of tooth decay. With X-rays, decay that might otherwise go unnoticed can be diagnosed. Today, dentists rely on X-rays to spot problems that aren't evident to the eye or probe during a visual clinical examination of the teeth. By discovering tooth decay in its early stages, a simple routine filling can be done, thus preventing serious irreversible damage.

The best way to deal with decay is to prevent it. Most people spend from 30-60 seconds brushing their teeth. However, that is simply

not enough time to effectively remove plaque to maintain oral health. And most people floss sporadically, if at all. Yet floss removes much of the plaque at the gumline and between the teeth where it is most likely to decay.

Dental health is relatively easy to achieve and maintain by spending a few minutes a day brushing and flossing and having regular checkups and cleanings. You can avoid dental problems.

Dentists today are more skilled and sophisticated than ever before, having benefited from important discoveries about disease and decay prevention. Your entire dental team is committed to providing you with the best possible oral care. But your dentist alone can't give you good dental health. Oral health is a gift you give to yourself. So think enough of yourself to invest a few minutes each day to keep your mouth healthy. You will have something to smile about for a lifetime.

Alumni schedule battle with South Lyon

Rec Briefs

Alumni meet: Novi and South Lyon cross country runners will meet Sept. 10 in the first annual alumni contest. All former Wildcat runners are invited to participate. The meet will be held at the Bartlett school in South Lyon at 5 p.m. For more information call Bob Smith at 344-8300.

Pool Schedule: Open swimming at Novi High will be held 7 p.m. to 8:30 p.m. Mondays and Thursdays. The pool may also be rented on Friday nights from 7 p.m. to 9 p.m. Swimming lessons, swimnastics and scuba diving programs will also be held. Call 344-8330 ext. 71 for more information.

Punt, pass and kick: The eighth annual Novi Punt, Pass and

Kick competition will be held Sunday, Sept. 20 at noon at the Novi Meadows football field. All football enthusiasts ages 8-13 are welcome to participate. The competition is free. Register in person at Novi Parks and Recreation office by Thursday, Sept. 18. Winners advance to regional and regional winners advance to the state competition held at the Pontiac Silverdome during the Lions, Browns matchup.

Softball: Softball double-elimination tournament men's and women's tourney on Oct. 10-11 at Novi Power Park. All ASA registered men's class C and below and women's class C and below teams are eligible. Interested teams call Tom Willette at 455-6623.

Basketball: American basketball camp clinics will conduct a boy's session Monday's, Sept. 14 through Oct. 12 for third and fourth graders 6:30-7:30; fifth and sixth graders from 7:45-8:45 p.m. Girl's clinics: Wednesday's, Sept. 16-Oct. 14. Third and fourth graders will meet from 6:30-7:30 and fifth and sixth graders from 7:45-8:45. The fee is \$25 for residents (including t-shirt) and \$30 non-resident. Registration deadline is Sept. 10 or class limit of 25.

RESEARCH VOLUNTEERS NEEDED

HEALTHY, POSTMENOPAUSAL FEMALES
AGES 50-75

May qualify for medication research studies involving Hormone Replacement therapy. Research volunteers are PAID FOR PARTICIPATION.

Call Liz or Ann

996-7051, Mon.-Thurs. 8-4

Warner-Lambert/Parke-Davis Community Research Clinic
2800 Plymouth Rd.
Ann Arbor, MI 48105

THINKING OF REPLACING YOUR WINDOWS?



Clean Your Windows Safely & Easily From Inside Your Home

GREAT LAKES WILL BEAT ANY OF THESE WINDOW OFFERS!*

*SUBJECT TO EXCLUSIONS IN THE ORIGINAL ADS

- ✓ Windows \$5⁰⁰ each per month
- ✓ A Houseful Of Windows \$1,488
- ✓ A Houseful Of Windows \$1,199
- ✓ A Houseful Of Windows \$995
- ✓ Windows \$199⁰⁰ each, installed
- ✓ Windows \$188⁰⁰ each, installed
- ✓ Windows \$179⁰⁰ each, installed
- ✓ FREE Marble Sills!
- ✓ FREE Garden Window
- ✓ \$400⁰⁰ Below Your Lowest Price
- ✓ \$400⁰⁰ Factory Rebate

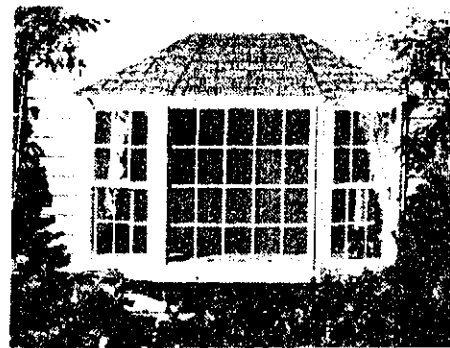
Plus These Extras!

NO MONEY DOWN on approved credit



- ✓ Free Screens
- ✓ Free Security Locks
- ✓ 50 Year Guarantee With Labor
- ✓ 30-day Money-Back Guarantee After Installation
- ✓ Best Price
- ✓ Best Vinyl Windows
- ✓ No Money Down
- ✓ Sliders At No Extra Cost
- ✓ Hot Sealed 7/8"
- ✓ Thermo Pane Glass
- ✓ Free Estimate

BAY WINDOW



with purchase of windows for insulated sub structure

\$2490⁰⁰ EXTRA

FREE No Obligation In-Home Estimate

RESPONSE OVERWHELMING
SALE EXTENDED TO SEPTEMBER 15

GREAT LAKES IMPROVEMENTS

Visit our Showroom at 1501 S. Saginaw in Flint

TOLL FREE

1-800-383-7929

OR

238-1050

24 Hour Phone Answering — 7 Days

Michigan State License No. 069658

REAL ESTATE

Cul-de-sac living has many advantages

By James M. Woodard
Copley News Service

Cul-de-sac living has its perks. Most families who purchase a home on a cul-de-sac street consider the low traffic flow and quiet environment. But there are more benefits.

Years ago these streets, with only one point of entry-exit, were commonly called "dead-end streets." Later, home builders and brokers didn't like the negative connotation of that term so they changed it to "circle drive" in their advertising.

We now simply call them cul-de-sacs—a French term meaning "bottom of a sack." Webster's New World Dictionary defines the term as a passage or position with only one outlet. Most cul-de-sac homeowners like it that way.

These little enclave communities

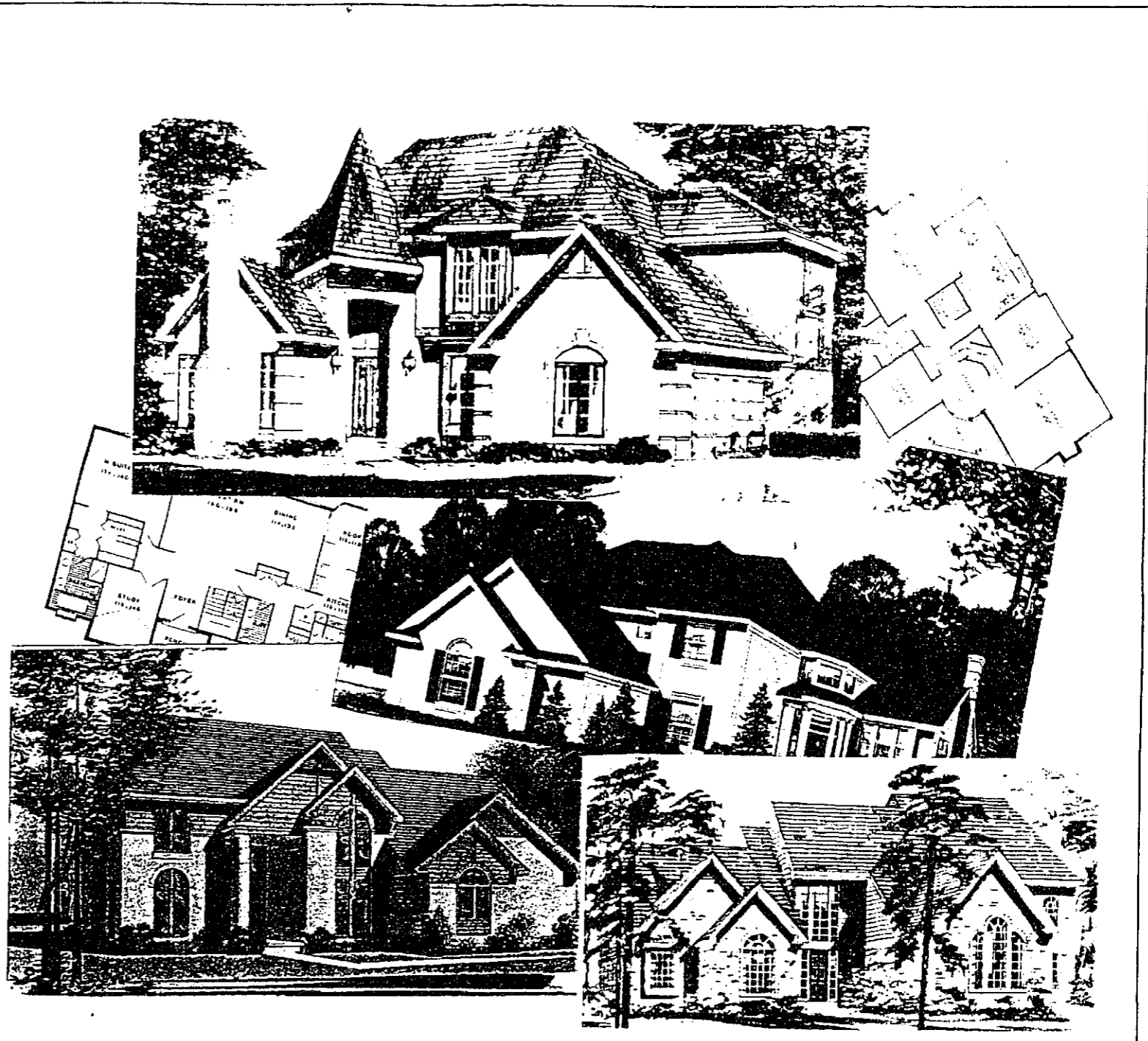
are particularly appealing to families with small kids. It provides a comparatively safe place to play, and cul-de-sac kids tend to become close friends.

In fact, all family members enjoy the unique cul-de-sac social life in their mini-community. Some hold an annual "block party"—usually in the summer—where their cul-de-sac street is blocked off from traffic and families move into the street for a fun bash.

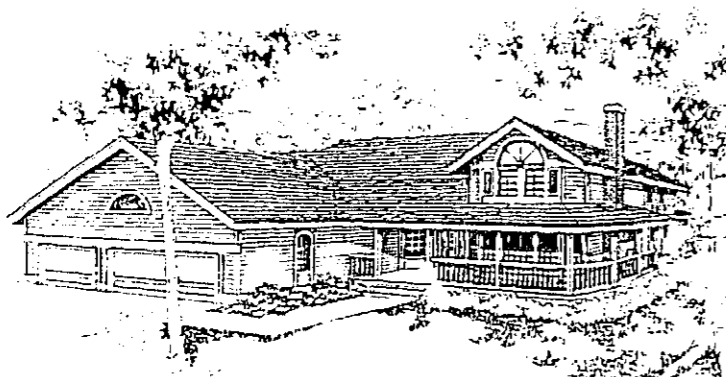
Such a neighborhood social event was recently held on a cul-de-sac near my residence. The street was blocked off from 1-9 p.m. while the families enjoyed a lavish barbecue and community fun time. Everyone brought food and drinks.

Activities at the block party included a wide variety of games and contests—from volleyball to

Continued on 2



HOME DESIGNS



Country styling is featured in the Jeffs

By James McAlexander
Copley News Service

Country styling is clear in the wide wraparound porch of the Jeffs. But inside, this one-and-a-half-story home is totally contemporary.

At the center of the home, lofty vaulted ceilings and an open floor plan give a first impression of spaciousness in the dining room and family room. And although ceilings are lower in the other rooms, most of the other rooms are also quite large.

The only small rooms in this house are the half-bath and the adjacent utility room.

Straight ahead of the French-door entryway, a U-shape stairway with polished Colonial wood dowel posts and banister leads upstairs, visually separating the dining room from the family room.

Due to its unconventional placement in the center of the room, a bridge at the top connects the stairway to the two upstairs bedrooms. The vantage points created by the stairs and bridge serve as lofty perches for watching and joining the action below.

Another set of French doors opens into a parlor with a Colonial fireplace, a long mantel and built-in bookcases, while the entire area is illuminated by a wide bay window.

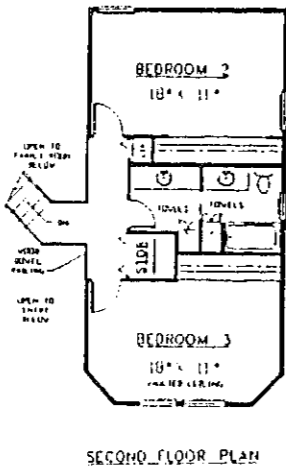
Sliding-glass doors fill the nook with light and offer easy access to the patio for outdoor dining when the weather is inviting. A wood-

burning stove is nestled in the far corner of the family room.

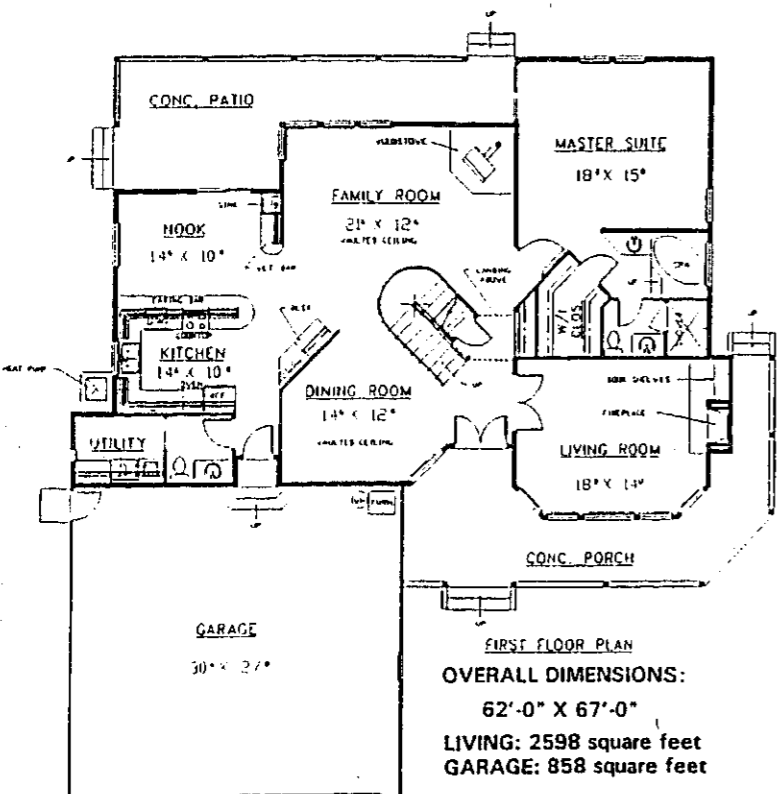
The master suite includes a huge walk-in closet, shower and spa. It has two lavatories, one inside the water closet and the other next to the spa.

Both of the upstairs bedrooms are large, and one has a vaulted ceiling. An extra vanity in the shared bathroom provides additional makeup space outside the bathroom, a definite plus with teens.

For a study plan of the Jeffs (400-28), send \$7.50 to Landmark Designs, c/o HomeTown Newspapers, 323 E. Grand River Ave., Howell, MI 48843. (Be sure to specify plan name & number when ordering). Designers, Architects and readers with plans they would like to see featured also are invited to contact Landmark.



SECOND FLOOR PLAN



FIRST FLOOR PLAN
OVERALL DIMENSIONS:
62'-0" X 67'-0"
LIVING: 2598 square feet
GARAGE: 858 square feet

FIVE OF A KIND

Five developers get together to give Chase Farms Subdivision Novi a diverse look

By RICK BYRNE
Copy Editor

You'd think that trying to put five builders in one subdivision would be like trying to put five kids in the back seat of a minivan. Someone's going to get stepped on, and it will probably end in a fight.

But that's not the case with the new Chase Farms subdivision in Novi. The community, which is taking shape on Eight Mile Road near Griswold, is a collaborative effort by five unique, high-quality companies which in another place might view each other as competitors.

But developer Grand/Sakwa has brought this fivesome together within the same boundaries with a common goal. The players hope that the Builders' Showcase Grand Opening on Sept. 12-13 will be the christening of Novi's most sought-after community.

"We looked at other places in Novi. We think this community will be No. 1," said Stuart Michaelson, owner of Stewart Homes. "Especially in the second phase, it's going to be really beautiful."

Continued on 2

Herbs are easy

By C.Z. Guest
Copley News Service

GARDENING

Every day someone finds a new and innovative use for easy-to-grow, multipurpose herbs. In fact, there are nearly as many herbs as there are uses for them.

Everyone knows that herbs are ideal for spicing up soups, stews, vinegars, jellies and relishes and that the right herb can add zest to fish, meat and poultry. Quite frequently, a common herb is the "secret ingredient" your grandmother talked about at the dinner table.

But herbs — actually parts of herbs, such as flowers, leaves, roots, seeds and bark — can be counted on for more than improving the flavor of food. Many doctors suggest eucalyptus herbal rubs or balms for their patients with strained muscles or mild back problems.

Herbs often are used for cosmetic purposes or artistic endeavors. People love to drink chamomile or scented geranium herbal teas and unwind from a hard day's work in a relaxing bath accentuated with sweet flag or sweet violet.

The appealing fragrance of dried herbs entices many either to buy or make their

own potpourris, sachets and wreaths, which boast a long-lasting herbal aroma. Mint and rosemary are among the most popular herbs for this purpose.

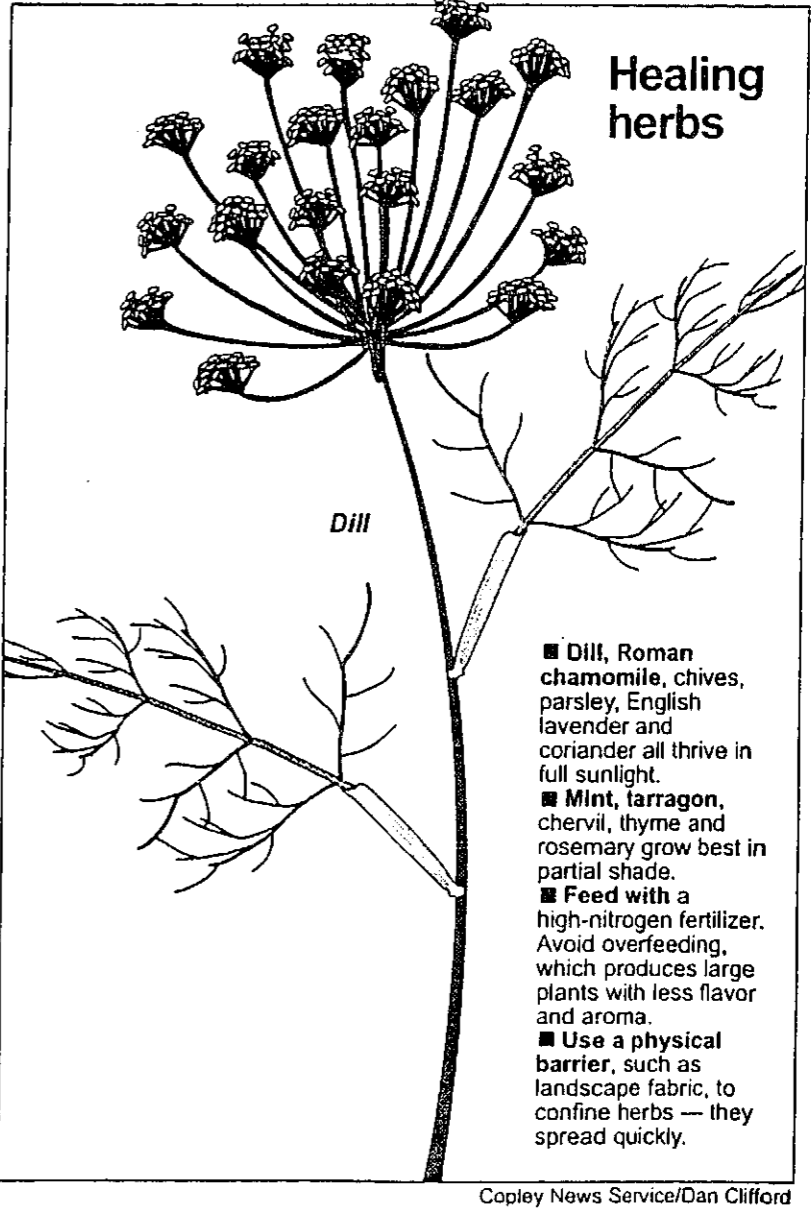
In fact, the only thing most people who use herbs don't seem to know about them is that they are among the easiest of all plants to grow.

Gardeners appreciate the variety of shapes, sizes and colors in which herbs come and put them to use in decorative containers or rock gardens or as ground covers. When matched with annuals and perennials, herbs make eye-catching additions to beds and borders. Many herbs spread quickly. A physical barrier, such as landscape fabric, helps confine them.

Some herbs take less effort to grow than others, so it's important to decide before starting how much effort you intend to put forth. If you have time to spend, begin the frugal way, from seed; otherwise, purchase started seedlings or rooted cuttings.

When planted, these tend to take root quickly, enabling the gardener to reap their benefits early.

Continued on 3



Healing herbs

- Dill, Roman chamomile, chives, parsley, English lavender and coriander all thrive in full sunlight.
- Mint, tarragon, chervil, thyme and rosemary grow best in partial shade.
- Feed with a high-nitrogen fertilizer. Avoid overfeeding, which produces large plants with less flavor and aroma.
- Use a physical barrier, such as landscape fabric, to confine herbs — they spread quickly.

Copley News Service/Dan Clifford

Five developers get together to shape Chase Farms

Continued from 1
The first phase of 115 lots is selling out quickly. Phase two, which comprises 103 lots on the north end of the property, features some heavily wooded areas, walk-out lots, and a meandering river which creates a number of river-front lots. Sidewalks line every street in the subdivision.

hardware and fixtures and completely drywalled side entry garages.
In fact, the interaction between the contingencies brings out the best in each, Michaelson said it wasn't unusual for builders to help each other out by loaning out materials and the like. Bette Kessler, who is organizing the subdivision, called it "friendly competition."

The homes are definitely aimed at the upscale buyer. They start at \$275,000 for something in the neighborhood of 2,600 square feet. Homes of up to 3,500 square feet are available.
Super Homes Inc., Potarch Homes, Saccia Building Co. and PaulMark Building Co. have all decided to shoot the works with gourmet kitchens, nine-foot ceilings, whirlpool baths, name-brand

hardware and fixtures and completely drywalled side entry garages.
In fact, the interaction between the contingencies brings out the best in each, Michaelson said it wasn't unusual for builders to help each other out by loaning out materials and the like. Bette Kessler, who is organizing the subdivision, called it "friendly competition."

hardware and fixtures and completely drywalled side entry garages. In fact, the interaction between the contingencies brings out the best in each, Michaelson said it wasn't unusual for builders to help each other out by loaning out materials and the like. Bette Kessler, who is organizing the subdivision, called it "friendly competition."

hardware and fixtures and completely drywalled side entry garages. In fact, the interaction between the contingencies brings out the best in each, Michaelson said it wasn't unusual for builders to help each other out by loaning out materials and the like. Bette Kessler, who is organizing the subdivision, called it "friendly competition."

hardware and fixtures and completely drywalled side entry garages. In fact, the interaction between the contingencies brings out the best in each, Michaelson said it wasn't unusual for builders to help each other out by loaning out materials and the like. Bette Kessler, who is organizing the subdivision, called it "friendly competition."

hardware and fixtures and completely drywalled side entry garages. In fact, the interaction between the contingencies brings out the best in each, Michaelson said it wasn't unusual for builders to help each other out by loaning out materials and the like. Bette Kessler, who is organizing the subdivision, called it "friendly competition."

hardware and fixtures and completely drywalled side entry garages. In fact, the interaction between the contingencies brings out the best in each, Michaelson said it wasn't unusual for builders to help each other out by loaning out materials and the like. Bette Kessler, who is organizing the subdivision, called it "friendly competition."

Cul-de-sacs can mean more value, fun

Continued from 1
Block parties of this type, where traffic is stopped, usually must be approved by the city. In fact, each application is normally reviewed and approved by both the city Police Department and Traffic Engineering Department. The application also must be signed by a majority of all residents on the blocked-off street.

These festive neighborhood social get-togethers are not only fun for kids and adults, they also enhance security for area homes. When families know each other well, they're more apt to keep an eye on other homes in the neighborhood and report anything suspicious.
All these special benefits impact home values. A quality cul-de-sac home—particularly in communities

that show solid pride of ownership—will typically cost more than other comparable homes, and they tend to retain their value better than others.
Questions may be used in future columns; personal responses should not be expected. Send inquiries to James M. Woodard, Copley News Service, P.O. Box 190, San Diego, CA 92112-0190.

RE/MAX COUNTRYSIDE (313) 486-5000
417 S. Lafayette South Lyon Mich. 48178

REALTY OPPORTUNITY

Serving Oakland, Livingston, Washtenaw & Wayne Counties
Each office is independently owned & operated

COUNTRY LIVING AT ITS BEST! This outstanding ranch features 3 bedrooms, 2½ baths, family room with fireplace, dining room, entertainment room with kitchen, bar and hot tub, 1st floor laundry, walk-out basement and 3 car garage. Secluded off private road, Hilltop setting, plenty of trees on 1.2 acre lot. *\$159,900 Call Tony Sparks 486-5006.

FANTASTIC SPACIOUS RANCH features 3 bedrooms, 2½ baths, family room with natural fireplace, partially finished basement with 4th bedroom, full bath and rec. room. New vinyl clad windows & newer carpet. 2 car attached garage and new driveway just installed. \$112,900 call Tony Sparks 486-5006.

COLONIAL ACRES - Two new listings. Beautiful townhouse and a one B/R ranch unit with windows overlooking lawn. Both units in immaculate condition thru-out. Priced to sell. We have many units in this super senior community, prices range from \$36,500, to \$84,500. Call Norm Sieb at 486-5010.

VACANT LAND - Green Oak Twp. 10 Beautiful Acres. Partial woods, Small stream, possible walk-out building site. Country, yet close to schools and shopping. Within ¼ mile of paved road. \$78,900. Please call Skip or Jean Lamoreaux for details, 486-5007.

JUST LISTED - VACANT - Hamburg Twp. 1.5 Acres, rolling, possible walk-out site. Nice area of homes. Approximately 7 miles to U.S. 23 or I-96. \$27,000. Please call Skip or Jean Lamoreaux for more information. 486-5007.

Red Carpet® Hot! RED CARPET KEIM

LOVELY BEGINNER COLONIAL
Priced right to get you out of that apartment! Three bedrooms, family room with fireplace, gathering room, dining room, country kitchen. Four foot crawl for storage. Sidewalks in sub. Novi Schools. \$107,900

VACANT LAND AVAILABLE. Call today for details. This might be your chance to build your dream home.

GREAT BEGINNER CONDO with bedrooms up. Att. garage, private front porch. Seller participating in closing costs. \$66,900

344-1800
43390 W. 10 Mile Rd., Novi, MI 48050
Each Red Carpet Keim Office is independently owned and operated

Real Estate Showcase
ERA LAYSON REALTORS, INC.
346 N. Lafayette - South Lyon, MI 48178
(313) 437-3800

NEW ON MARKET - Great family neighborhood where your kids can enjoy the summer in the above-ground pool. Three bedrooms, family room, kitchen, breakfast room, 2 car garage, walk-out basement. \$189,900. Call Carol Mason, (313) 486-5006.

MOVE IN READY - Immediate occupancy. Charming 3 bedroom ranch in Newman Farms. South Lyon schools. Large bedrooms, oak floors, hardwood floors, new carpeting in dining room. Two bedrooms with a den used as a third bedroom. Year-around porch. Call Carol Mason, (313) 486-5006.

REDUCED! SOUTH LYON - Charming and spacious. Older home with huge yard. Newly remodeled kitchen, new outdoors, flooring. New carpeting in dining room. Two bedrooms with a den used as a third bedroom. Year-around porch. Call Carol Mason, (313) 486-5006.

REDUCED! EXCELLENT LOCATION minutes from downtown Brighton with seclusion & serenity of the Country. Beautiful Brick Ranch. 4 bedrooms, walk-out basement, 2 fireplaces & MORE on 2 acres with a lot large 20 ft. deep Pool. Also has dog kennels. Brighton schools. Lot, \$194,000.00. (S-258)

IF WE DON'T SELL YOUR HOME WE'LL BUY IT.

* Some limitations apply. To see if you qualify, call your ERA Real Estate Specialist and review the Sellers Security Plan Contract.

COMMERCIAL • RESIDENTIAL • HORSE FARMS • RELOCATION

ERA RYMAL SYMES
There Really Is A Difference In Real Estate Companies

WOLVERINE LAKE-Quiet cul-de-sac location. 3 BR/2 bath quad-level, access to Wolverine Lake, large cozy family rm. w/fireplace, large kitchen, 5 ceiling fans, gorgeous yard. \$127,500. Call 478-9130

FARMINGTON-Beautiful ranch home in downtown Farmington close to all shopping, walk to town. Enclosed Florida room overlooking a wooded area. Kitchen appliances included. \$53,000. Call 478-9130

NOVI-Delightfully sunny & bright 3 BR Condo. Homemaker kitchen includes all appliances, full basement, 1-car attd garage, complex offers pool & tennis ct. \$79,900. Call 478-9130

NORTHVILLE-Traditional brick/cedar 2-story. East-in kitchen, sun room, FR w/wall bar, sec. system, C/A. Call 349-4550, ERA RYMAL SYMES.

NOVI-Beautifully decorated 3 bedrm. Ranch. Formal dining rm., 1st floor laundry, screened porch, fireplace, mature trees provide shade & spectacular fall foliage. \$106,900 call 478-9130

NOVI-Priced right & ready to go! Neutral dec. many updates, windows, repl., dock, garage door & baths. Hardwood floors, 3 BR/1.5 baths. \$123,900. Call 349-4550, ERA RYMAL SYMES.

NOVI-Lovely 4 bedrm. Colonial, family rm. w/fireplace, 1st floor laundry, very private rear yard, walk to all schools. C/A. Large commons area in subdivision. \$188,900. Call 478-9130

FARMINGTON-Attractive ranch with firesteel warmth, C/A, cathedral ceilings, new carpeting, family rm., partially fm. basmt, dock, master suite, 3BR/2 baths. \$144,900, 349-4550, ERA RYMAL SYMES.

Watch our Real Estate Showcase Saturday 9am-9:30am Channel 38

Novi Office 478-9130 **West Bloomfield Office 851-9770** **Northville Office 349-4550**

Select Properties from Real Estate One, Inc.
Michigan's Largest Real Estate Company
Call Real Estate One to put Michigan's most successful seller of homes to work for you.

Milford 684-1065
Plymouth/Novi 348-6430
Brighton 227-5005
Our 63+ REALTORS

COUNTRY AT HEARTH Romp to your heart's content on this gently rolling 5 acres in Milford. Sprawling 4 bedroom ranch with den, 3 baths, 2 lavs, 2-story, 3-car barn plus more. \$216,900. 684-1065 #G651

WALK TO DOWNTOWN AND SCHOOLS from this 4 bedroom Colonial with den. Backs to wooded area, new roof and updated landscaping. Lovely, quiet neighborhood. \$209,000 348-6430 (LE)

LOVELY HILLSIDE SETTING. Mature trees enhance this custom built home with walking distance to town and schools. Cathedral ceiling & fireplace in living room. A great buy!! \$157,900 348-6430 (CN)

JUST LISTED - A REAL BUY! Lake privileges go with this 3 bedroom ranch with 2 baths. Natural fireplace, large kitchen and breakfast room and an attached garage. Large lot too! \$77,500 684-1065 #F294

DECEPTIONAL BARGAIN! Spacious ranch in quiet hillside neighborhood on 100 x 132 lot. Priced to allow quick move. 1992 kitchen renovation, some newer windows, central air, plus Home Warranty. Don't miss this one. \$137,900 348-6430 (CAR)

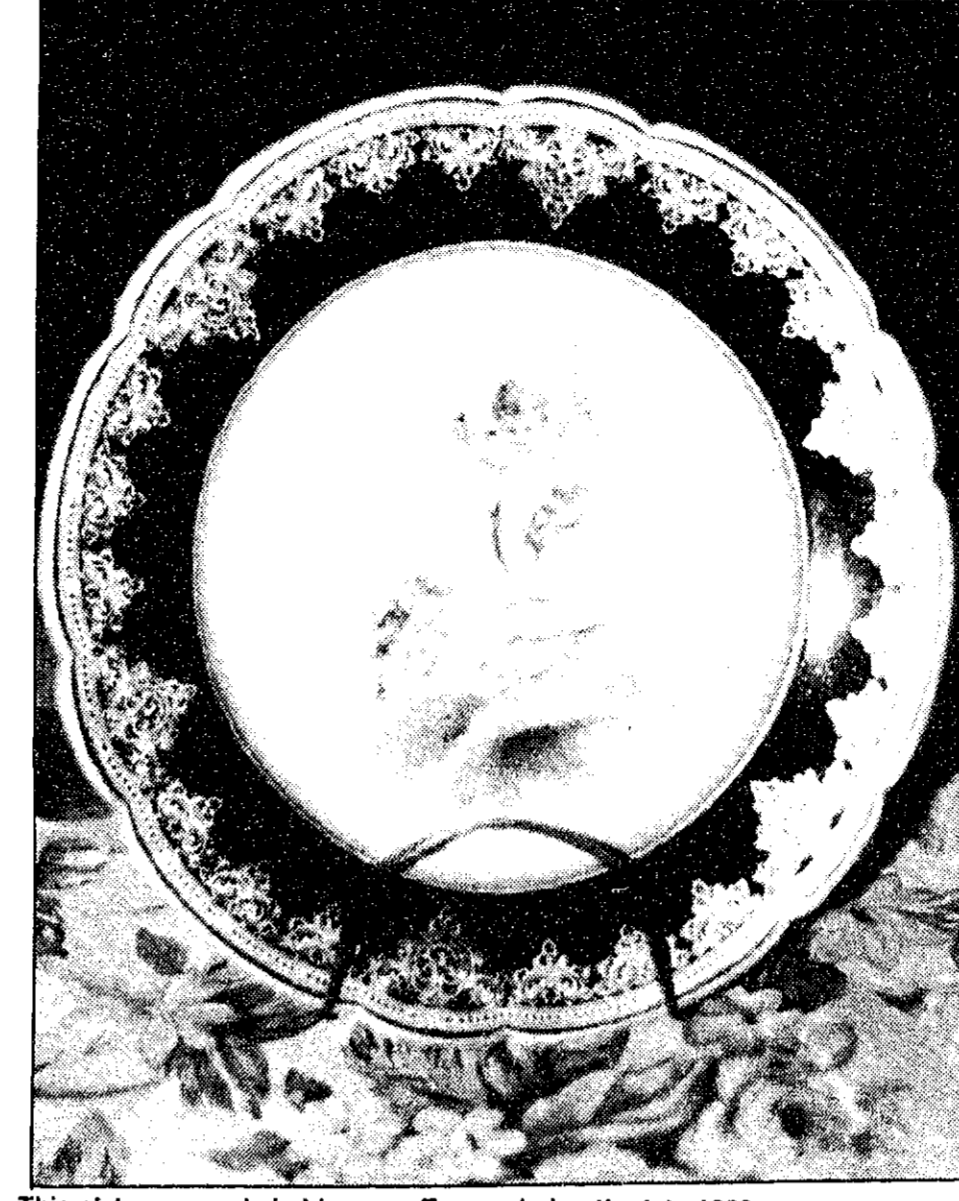
LOW LISTING! Great home in super location. Family room with cathedral ceiling, raised hearth fireplace, built-in bookcases. Nice deck off back. Walk to school, parks, downtown Northville, older mill, 3 bedrooms, 1 1/2 baths. \$143,300 348-6430 (C/B)

VERY NICE COLONIAL with Mother-in-law quarters. Walk to downtown Northville. Well plaster, fireplace in living room, formal dining, 2 full baths, basement & garage. Well maintained home with great potential. Don't miss this one. \$134,900 348-6430 (CEN)

HERE'S THAT SPECIAL HOME YOU'RE LOOKING FOR! Many nice features in this "move in" beauty. Backs to quiet Commons, large rooms, deck off rear, master bath has skylight. 4 bedroom, 2 1/2 bath Colonial. \$184,900 348-6430 (BN)

DESIRABLE YORKSHIRE PLACE SUB. Professionally landscaped w/stone sprinklers & deck. Library w built-in bookcases. Partially finished basement w/4th bedroom or rec room. 1st floor laundry, central air, \$189,900 348-6430 (PQR)

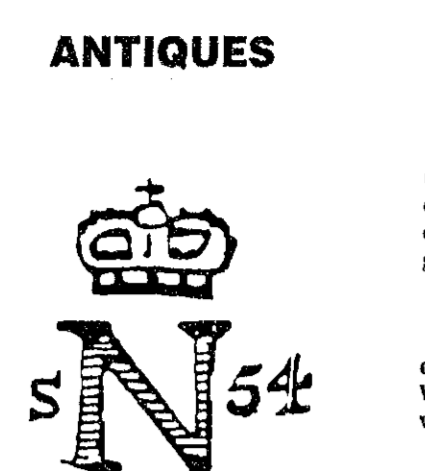
LOCATION! LOCATION! Historical district quaint bungalow on tree-lined street offering lovely oak kitchen, large back yard, 2 1/2 bedrooms, newer oversized garage & basement. Neighborhood or more expansive homes. \$127,300 348-6430 (DUE)



This plate was made in Limoges, France during the late 1800s.

An 18th century French plate

By James G. McCollam
Copley News Service



ANTIQUES

Q. Any information you may have concerning the plate in the enclosed photograph would be greatly appreciated. The mark on the back is CPH over GDM. The plate measures 9 inches. A. Your plate was made in Limoges, France, by Charles Field Haviland, The GDM stands for Gerard, Dufrancois & Morel, a company taken over by Haviland. Your plate is from the late 1800s. It would probably sell for \$75 to \$85.

Q. I have inherited a beautiful cut-glass punch bowl. It is so lovely I would like to find a sterling silver punch ladle. It doesn't necessarily have to be an antique. What can I expect to pay for one? A. Fine sterling antique ladles can run from about \$1,000. You should be able to buy one made in the last 50 to 75 years for around \$200 to \$300.

Q. I have a teapot made by John Maddock & Sons Ltd. It is the Indian Tree pattern. What information can you give me about the Indian Tree pattern? I also would like to know approximately when it was made and its value. A. The Indian Tree pattern features a gnarled tree with various flowers in an Oriental style. It was produced by several British potters in the early 1800s. It is still being made today.

Your teapot was made in the early 20th century and would probably fetch \$75 to \$85.

Q. I have an antique plate that is said to have belonged to Napoleon. It is decorated with crowns and trimmed in gold. The attached mark is on the bottom of the plate. What can you tell me about its history and what it might be worth? A. The Sevres porcelain factory in France used this mark in 1854 during the brief reign of Napoleon III. It did not belong to him or the original Napoleon I.

Your rare plate would sell in the \$225 to \$235 range.

Q. Vincent van Gogh's painting, "Trises," sold for more than \$50 million, yet

A. They are collectible, and some are expensive. However, it is illegal to sell them. Here are a few examples:
• Distinguished Service Medal—\$50-\$60.
• Bronze Star—\$10-\$15.
• Distinguished Flying Cross—\$20-\$25.
• Air Medal—\$20-\$25.
• Medal of Honor—\$500-\$600.
• Silver Star—\$65-\$75.
• Purple Heart—\$15-\$20.
• Navy Cross—\$75-\$80.

Letters with picture(s) are welcome and may be answered in the column. We cannot reply personally or return pictures. Address your letters to James G. McCollam, P.O. Box 1087, Notre Dame, IN 46556.

McCollam is a member of the Antique Appraisers Association of America.

Most herbs are sun lovers

Continued from 1
Planting seedlings is a relatively simple process. Most herbs prefer full exposure to sun, though some require shade. For instance, dill, Roman chamomile, chives, parsley, English lavender and coriander all thrive in full sun.

Among the herbs that grow better in partial shade are mint, tarragon, chervil, thyme and rosemary.
Specific planting directions should come with seedling packages. If not, ask the nursery salesperson.
Once your herbs are growing well, parts can be pruned as needed as long as enough foliage remains to allow regeneration. Herbs are best pruned on a cool, shade-filled day. This enables the plant to recover before it must face full sun again.

CREATIVE

NOLING Real Estate, Inc.
201 S. Lafayette, South Lyon, MI 48178
FIRST IN SERVICE
Office: 437-2056 522-5150

NEW CONSTRUCTION IN GREENOCK HILLS - 2,366 s.f. 2-story contemporary in prestigious country sub. 4 bedrooms, 2½ baths, family room with fireplace plus living room, formal dining. This home has all the features you're looking for and you can still select your finishing materials. 2-car attached garage, 8' ceiling in basement, central air. \$177,595

MOST OF HOME IS NEW CONSTRUCTION - 2,300 s.f. with 4 bedrooms, 1½ baths, 24 x 12 great room. Almost one acre, 2 car detached garage. Newer septic, furnace, windows. Hardwood floors in kitchen and dining. Great home for a large family in area of more expensive homes. \$129,900

YOU'RE LOOKING AT THE WOODED HILLSIDE VIEW from this first-class home in Brighton schools. 1,350 sq. ft. on 1st floor (2 bedrooms, 1½ baths, vaulted ceiling, great room, formal dining, sun room). 4.88 acres with possible future split in 4 years. Small barn. Unfinished walk-out is designed for 2 more bedrooms, 1½ baths, kitchen, rec. room, Anderson windows. Well and septic are in, siding is on. Wiring, plumbing, drywall, etc. yet to be done. **POSSIBLE LAND CONTRACT TERMS!!** \$129,900

THE MICHIGAN GROUP REALTORS
Present **A SHOWCASE OF FINE HOMES**

CITY OF HOWELL, sharp 3 bedroom, 2 bath home in prestigious NW area. Family room, new kitchen, flooring, freshly painted, large master with walk-out terrace, granite, newer furnace & central air. \$45,000 (R232)

COUNTRY LIVING with something special for everyone. For Mom, new kitchen, for Dad, 24 x 32 workshop, for the Kids, 24 x 40 2nd stall barn for horses & for All. So easy to enjoy. \$69,900 (R466)

A FAMILY DELIGHT, 3 bedroom, 2 bath b-level on a quiet country road. Close to Howell & expressways. Excellent school. Successful lot with mature trees. Only \$114,000 (R494)

COME SEE THIS FOR YOURSELF, spacious & light 3 bedroom ranch on 2 acres. Energy efficient, Anderson windows, full basement, beautiful master suite. \$110,500 (R917)

DO YOU WANT A PRIME LOCATION IN BRIGHTON TOWNSHIP? Do you want a home priced way below appraisals? Do you want to work on a huge lot? This one's for you! Huge farmhouse with most updates done-out needs more work. Top many amenities to list. Home warranty! \$129,500 (R663)

BIT OF HEAVEN 4 bedroom, 2 baths, 1.66 acres, lot of fruit trees, 30 x 40 pole barn, & too much more to mention. Hurry, won't last at only \$150,000 (R550)

KIDS CAN WALK TO SCHOOLS! Spacious 4 bedroom brick ranch on 1.8 acres. Full finished basement, possible split. Great location. \$139,800 (R521)

A MILLION DOLLAR VIEW OVERLOOKING STRAWBERRY LAKE. Chain of lakes privileges, wooded hillside setting, peaceful & quiet. Immaculate 4 bedroom, large screened porch & extensive decking. \$149,900 (R648)

SPECTACULAR CONTEMPORARY QUAD THAT LOOKS JUST LIKE NEW! Builders own new! Beautifully finished, beautiful use of ceramic tile. In the prestigious Pines of Harland. \$150,000 (R550)

NEW CONSTRUCTION, inspiring ranch home in country subdivision, 3 spacious bedrooms, great room with skylight & fireplace, 1st floor laundry, master bath with whirlpool, walk out lower level. \$151,900 (R875)

WONDERFUL FAMILY NEIGHBORHOOD well appointed 3 bedroom, 2 bath newer ranch. Open floor plan, great room with cathedral ceiling, fireplace, dock & boat facilities, home warranty. Many special features. \$152,500 (R677)

120' OF LAKE FRONTAGE on all sports DUCK LAKE. Home features 4 bedrooms, 1.5 baths, 2 car garage, extensive decking on 3 levels, dock & boat facilities, home warranty. \$177,500 (R683)

NEW & REFRESHING FRENCH PROVINCIAL finished with mature pines. 2 bedrooms, great room with fireplace & bay window, expertly planned kitchen, full walk out basement, exceptional quality & craftsmanship. \$152,000 (R858)

SECLUDED 2300 SQ. FT. CUSTOM RANCH on 10 acres. 3 bedrooms, 2 full baths, finished walk out lower level with second kitchen, family room with fireplace & full bath, possible in-law quarters. Top many amenities to list. Home warranty! Land contract terms. \$205,000 (R680)

CUSTOM BUILT IN PRESTIGIOUS DEMARIA SUBDIVISION. 4 bedroom, 2.5 bath, family rm with fireplace, formal living & dining room, great entry way & study. \$226,900 (R779)

GREAT STARTER OR RETIREMENT, full brick ranch with large living room & kitchen, ceramic tile bath, new kitchen flooring, large shed for extra storage. Call for more details. \$75,900 (R887)

BRIGHTON COUNTRY, beautiful Cape Cod with water privileges on all sports Ore Lake. \$119,850 (R906)

IMMACULATE HOME 3 or 4 bedrooms, 2.5 baths, fireplace, patio & deck in family room, new carpet & vinyl, finished basement, 2 1/2 car garage. Memberships available to Winans Lake & Lakeland Golf Club. \$147,900 (R982)

WELL MAINTAINED, 3 bedroom, full bathroom, central air, cathedral ceiling, paved driveway, all kitchen appliances including washer & dryer. \$88,900 (R908)

COME SEE FOR YOURSELF, this 3 bedroom contemporary home with views of meadows & fields from every window. Private 2.75 acre setting, french doors, parquet floors, fireplace in 2 story great room. Great value! \$134,900 (R991)

ALL THE EXTRAS. Choice Brighton location at an affordable price. Close to expressways, 3 bedroom ranch central air, appliances, full basement & attached garage. Call Now! \$128,000 (R977)

Watch our Real Estate Showcase Saturday 9am-9:30am Channel 38

7600 Grand River, Brighton (313) 227-4600

Member of RELO REALTOR LEADER IN RELOCATION is the world's largest in the world

CREATIVE LIVING REAL ESTATE
4C
THURSDAY
September 3, 1992

To place your Action Ad in Creative Living, the Monday Green Sheet or the Wednesday Green Sheet just call one of our local offices

313 227-4436
517 548-2570
313 348-3022
313 437-4133
313 685-8705

24 Hour Fax (313) 437-9460
Hours: Tuesday - Friday 8:30 a.m. to 5 p.m.
Monday 8:00 a.m. to 5 p.m.

Headlines For Creative Living plus Fowlerville, Pinckney and Hartland shopping guides

3:30 p.m. Friday
3:30 p.m. Monday

Rates 3 lines \$7.74
Each additional line \$1.74
Non-commercial rate
Contract rates available for Classified Display ads.
Contact your Local Sales Representative

Classified ads may be placed according to the above deadlines. Advertisers are responsible for reading their ads the first time it appears and reporting any errors immediately. HomeTown Newspapers will not issue credit for errors in ads after first incorrect insertion.

BRIGHTON 3 br, 2 baths
finished bsmt, \$88,000.
(313) 299-8216, after 5pm.

COME HOME TO BURWICK GLENS
A new exciting Condominium Community conveniently located within the charming city of Williamston.
PRICED FROM ONLY \$55,900!
1 & 2 or 3 bedroom
Floor plans available
All Appliances,
including washer & dryer
Screened Deck/Patio
Attached Garage
Call for your appointment today.
(517) 546-3265.

NEW HUDSON ON LAKE ANGOLA
water front, pool, condos, 2, 3, 4, 5 br. units, scenic view, 1 1/2 baths, built-in, scenic view. See site (313) 671-1735.

BRIGHTON 1974 1470 2 br, 1 1/2 bath, pool, must be moved.
\$55,000. (313) 486-2812.

ANN ARBOR. Moving must be moved \$3,500 best.
(313) 231-9829.

BRIGHTON Sylvan Glen. New 1465 w/complete bsmt. To be looked at.
(313) 227-1651.

BRIGHTON 1974 1470 2 br, 1 1/2 bath, pool, must be moved.
\$55,000. (313) 486-2812.

ANN ARBOR. Moving must be moved \$3,500 best.
(313) 231-9829.

BRIGHTON Sylvan Glen. New 1465 w/complete bsmt. To be looked at.
(313) 227-1651.

HOLLY HOMS LTD
\$170 Home Payment
236 Lot Rent
\$405 Month Rent
For this 1986 Redman, 14 x 7 1/2 Bedroom, 14 x 7 1/2 Bath, 3 1/2 car garage, dishwasher, central air, car driveway. Beautiful park. Excellent condition.
449-0711
1229 W. 2nd Street, 3rd Fl., Ann Arbor, MI 48107

Triangle Mobile Homes Sales
Many previously owned homes for sale. Starting at \$5,000. Financing Available. To qualified buyers. Call today!
Highland Greens Estates
2377 N. Mill Road, Highland
1 mile N. of M-59
(313) 887-4164

REPOSSESSED
and pre-owned homes as low as \$7,000. Financing assistance available.
Little Valley Homes
624-2626

MOBILE HOME FINANCING
Buying, selling, refinancing? Need cash? We have the lowest interest rates, up to 20 year terms are available.
MODEL SALE Custom built mobile home available for quick sale. Located in New and Plymouth areas. 1470 sq. ft. 2 bedroom, 2 bath, separate utility, includes central air, DARLING HOMES, Chateau Estates, (313) 227-2600.

KENSINGTON PLACE MOBILE HOME COMMUNITY
Welcome to this new and exciting mobile home community. Homes starting at \$4,000. Single and double w/dfs, full bath, full kitchen and living areas. Enjoy a beautiful setting overlooking Kent Lake.
REPOSSESSED
and pre-owned homes as low as \$7,000. Financing assistance available.
Little Valley Homes, (800) 942-2265.

REPOSSESSED
and pre-owned homes as low as \$7,000. Financing assistance available.
Little Valley Homes, (800) 942-2265.

REPOSSESSED
and pre-owned homes as low as \$7,000. Financing assistance available.
Little Valley Homes, (800) 942-2265.

MOBILE HOME FINANCING
Buying, selling, refinancing? Need cash? We have the lowest interest rates, up to 20 year terms are available.
MODEL SALE Custom built mobile home available for quick sale. Located in New and Plymouth areas. 1470 sq. ft. 2 bedroom, 2 bath, separate utility, includes central air, DARLING HOMES, Chateau Estates, (313) 227-2600.

REPOSSESSED
and pre-owned homes as low as \$7,000. Financing assistance available.
Little Valley Homes, (800) 942-2265.

REPOSSESSED
and pre-owned homes as low as \$7,000. Financing assistance available.
Little Valley Homes, (800) 942-2265.

REPOSSESSED
and pre-owned homes as low as \$7,000. Financing assistance available.
Little Valley Homes, (800) 942-2265.

REPOSSESSED
and pre-owned homes as low as \$7,000. Financing assistance available.
Little Valley Homes, (800) 942-2265.

REPOSSESSED
and pre-owned homes as low as \$7,000. Financing assistance available.
Little Valley Homes, (800) 942-2265.

REPOSSESSED
and pre-owned homes as low as \$7,000. Financing assistance available.
Little Valley Homes, (800) 942-2265.

REPOSSESSED
and pre-owned homes as low as \$7,000. Financing assistance available.
Little Valley Homes, (800) 942-2265.

MOBILE HOME FINANCING
Buying, selling, refinancing? Need cash? We have the lowest interest rates, up to 20 year terms are available.
MODEL SALE Custom built mobile home available for quick sale. Located in New and Plymouth areas. 1470 sq. ft. 2 bedroom, 2 bath, separate utility, includes central air, DARLING HOMES, Chateau Estates, (313) 227-2600.

REPOSSESSED
and pre-owned homes as low as \$7,000. Financing assistance available.
Little Valley Homes, (800) 942-2265.

REPOSSESSED
and pre-owned homes as low as \$7,000. Financing assistance available.
Little Valley Homes, (800) 942-2265.

REPOSSESSED
and pre-owned homes as low as \$7,000. Financing assistance available.
Little Valley Homes, (800) 942-2265.

REPOSSESSED
and pre-owned homes as low as \$7,000. Financing assistance available.
Little Valley Homes, (800) 942-2265.

REPOSSESSED
and pre-owned homes as low as \$7,000. Financing assistance available.
Little Valley Homes, (800) 942-2265.

REPOSSESSED
and pre-owned homes as low as \$7,000. Financing assistance available.
Little Valley Homes, (800) 942-2265.

REPOSSESSED
and pre-owned homes as low as \$7,000. Financing assistance available.
Little Valley Homes, (800) 942-2265.

MOBILE HOME FINANCING
Buying, selling, refinancing? Need cash? We have the lowest interest rates, up to 20 year terms are available.
MODEL SALE Custom built mobile home available for quick sale. Located in New and Plymouth areas. 1470 sq. ft. 2 bedroom, 2 bath, separate utility, includes central air, DARLING HOMES, Chateau Estates, (313) 227-2600.

REPOSSESSED
and pre-owned homes as low as \$7,000. Financing assistance available.
Little Valley Homes, (800) 942-2265.

REPOSSESSED
and pre-owned homes as low as \$7,000. Financing assistance available.
Little Valley Homes, (800) 942-2265.

REPOSSESSED
and pre-owned homes as low as \$7,000. Financing assistance available.
Little Valley Homes, (800) 942-2265.

REPOSSESSED
and pre-owned homes as low as \$7,000. Financing assistance available.
Little Valley Homes, (800) 942-2265.

REPOSSESSED
and pre-owned homes as low as \$7,000. Financing assistance available.
Little Valley Homes, (800) 942-2265.

REPOSSESSED
and pre-owned homes as low as \$7,000. Financing assistance available.
Little Valley Homes, (800) 942-2265.

REPOSSESSED
and pre-owned homes as low as \$7,000. Financing assistance available.
Little Valley Homes, (800) 942-2265.

MOBILE HOME FINANCING
Buying, selling, refinancing? Need cash? We have the lowest interest rates, up to 20 year terms are available.
MODEL SALE Custom built mobile home available for quick sale. Located in New and Plymouth areas. 1470 sq. ft. 2 bedroom, 2 bath, separate utility, includes central air, DARLING HOMES, Chateau Estates, (313) 227-2600.

REPOSSESSED
and pre-owned homes as low as \$7,000. Financing assistance available.
Little Valley Homes, (800) 942-2265.

REPOSSESSED
and pre-owned homes as low as \$7,000. Financing assistance available.
Little Valley Homes, (800) 942-2265.

REPOSSESSED
and pre-owned homes as low as \$7,000. Financing assistance available.
Little Valley Homes, (800) 942-2265.

REPOSSESSED
and pre-owned homes as low as \$7,000. Financing assistance available.
Little Valley Homes, (800) 942-2265.

REPOSSESSED
and pre-owned homes as low as \$7,000. Financing assistance available.
Little Valley Homes, (800) 942-2265.

REPOSSESSED
and pre-owned homes as low as \$7,000. Financing assistance available.
Little Valley Homes, (800) 942-2265.

REPOSSESSED
and pre-owned homes as low as \$7,000. Financing assistance available.
Little Valley Homes, (800) 942-2265.

MOBILE HOME FINANCING
Buying, selling, refinancing? Need cash? We have the lowest interest rates, up to 20 year terms are available.
MODEL SALE Custom built mobile home available for quick sale. Located in New and Plymouth areas. 1470 sq. ft. 2 bedroom, 2 bath, separate utility, includes central air, DARLING HOMES, Chateau Estates, (313) 227-2600.

REPOSSESSED
and pre-owned homes as low as \$7,000. Financing assistance available.
Little Valley Homes, (800) 942-2265.

REPOSSESSED
and pre-owned homes as low as \$7,000. Financing assistance available.
Little Valley Homes, (800) 942-2265.

REPOSSESSED
and pre-owned homes as low as \$7,000. Financing assistance available.
Little Valley Homes, (800) 942-2265.

REPOSSESSED
and pre-owned homes as low as \$7,000. Financing assistance available.
Little Valley Homes, (800) 942-2265.

REPOSSESSED
and pre-owned homes as low as \$7,000. Financing assistance available.
Little Valley Homes, (800) 942-2265.

REPOSSESSED
and pre-owned homes as low as \$7,000. Financing assistance available.
Little Valley Homes, (800) 942-2265.

REPOSSESSED
and pre-owned homes as low as \$7,000. Financing assistance available.
Little Valley Homes, (800) 942-2265.

MOBILE HOME FINANCING
Buying, selling, refinancing? Need cash? We have the lowest interest rates, up to 20 year terms are available.
MODEL SALE Custom built mobile home available for quick sale. Located in New and Plymouth areas. 1470 sq. ft. 2 bedroom, 2 bath, separate utility, includes central air, DARLING HOMES, Chateau Estates, (313) 227-2600.

REPOSSESSED
and pre-owned homes as low as \$7,000. Financing assistance available.
Little Valley Homes, (800) 942-2265.

REPOSSESSED
and pre-owned homes as low as \$7,000. Financing assistance available.
Little Valley Homes, (800) 942-2265.

REPOSSESSED
and pre-owned homes as low as \$7,000. Financing assistance available.
Little Valley Homes, (800) 942-2265.

REPOSSESSED
and pre-owned homes as low as \$7,000. Financing assistance available.
Little Valley Homes, (800) 942-2265.

REPOSSESSED
and pre-owned homes as low as \$7,000. Financing assistance available.
Little Valley Homes, (800) 942-2265.

REPOSSESSED
and pre-owned homes as low as \$7,000. Financing assistance available.
Little Valley Homes, (800) 942-2265.

REPOSSESSED
and pre-owned homes as low as \$7,000. Financing assistance available.
Little Valley Homes, (800) 942-2265.

Grand Opening!
BRAND NEW CONDOMINIUM COMMUNITY!
Take a stroll through The Village at Eagle Heights, an affordable luxury condominium community. Here you'll find homes as stunning as the scenery around them and shopping, restaurants and entertainment nearby.
A great value. Priced from \$109,900.
Adler

Homes INCORPORATED
(313) 685-1588
211 E. Commerce Rd., Milford
EXECUTIVE RETREAT! Absolutely parklike setting surrounds this spacious Cape Cod home in Milford Twp. 2500 sq. ft., 3 BR, 2.5 BA, full walkout bsmt. Quiet & serene w. a beautiful home to match Polabarn & many extras. Call for private showing today. *249,500. S255

Now Building Phase III THE FAIRWAYS
at *Oak Pointe*
Why live anywhere else?
Located directly on the 3rd hole of the private Oak Pointe Country Club.
• RANCH & TOWNHOUSE
• STYLE CONDOS
• 2 B 3 BEDROOMS
• 2 CAR ATTACHED GARAGE
• 1ST FLOOR LAUNDRY
• ELEGANT MASTER BEDROOM SUITES WITH WALK-IN CLOSETS
• FULL BATHMENTS
• SKYLIGHTS
• 3 GOLF COURSES
• ALL SPORTS LAKE WITH PRIVATE BEACH MARINA
• TENNIS COURTS
• RECREATIONAL AMENITIES

ENGLAND REAL ESTATE CO.
NATURE LOVERS RETREAT! Situated on 3 acre setting with 2500 sq. ft. home, 4 bedrooms, 3 1/2 baths, formal dining, family room, w/dk fireplace, tiled bar, full bathroom, sauna room, great room w/woodburner, 3 car garage, 16x20 above ground pool, 2 decks & more for \$198,800. Milford Twp.
OUTDOORABLE! Check out 1600 sq. ft. ranch on 5 acre hilltop setting, 3 bedrooms, 1 1/2 baths, formal dining, full walkout lower level, 1st floor laundry, apacious living room w/fireplace & easy access to US-23 & M-59. \$137,900. Hartland.
BEST OF BOTH WORLDS! Private 2+ acre setting & 168' frontage on all sports Duff Lake come with 1900 sq. ft. 4 bdrm home, 1 1/2 baths, formal dining, 2 1/2 car garage & privileges to private Budy Club. \$149,900. Hartland. Motivated seller!

ELEGANT, WATERFRONT LIVING
In a peaceful, rural setting
Lakefront, Pond, and Woodland sites available
Phase II
• Custom homes from \$195,000.
• Quiet end of all sports lake.
• 3 1/2 acre sites all with lake frontage or access from \$46,000.
• Minutes from Ann Arbor, Brighton, Lansing & N.W. Detroit Suburbs.
• Excellent security system.
• 10 acres of common grounds with a nature trail & 1 mile of shoreline.
• Hunter's Creek - Builders own custom home offers hardwood floors, jacuzzi bath, 1st floor master suite, 3 car garage, circular driveway and more. Just listed and priced right at \$279,500.
• Northville - The ultimate acre! Superbly landscaped acre lot sets the tone for this wonderful 4 BR contemporary home loaded with amenities. This is better than new! 248,900.

Century 21
SUBURBAN, Inc. 261-1823
130 Main Centre Northville (313) 684-6666
Highland (313) 887-7000
Hartland (313) 887-7000
• SIX ACRES, approximately 1000 sq. ft. of living space. Additional living quarters on property. A pleasure to show. RH72 \$145,000.
• WATERFRONT! Enjoy all sports lakefront living from this 2 bedroom ranch. A wonderful year round home or a great get away retreat. \$111,900.
• ENJOY MATURE TREES and beautiful setting from 2 decks, one from the kitchen, the other leads from the master bedroom. Is just a little from this three bedroom contemporary home offers. V11-1775,000.
• STATEDLY DOUBLE-WING COLONIAL with circle drive situated on picturesque 1 1/2 mile road. Possible land contract. \$179,500.
• NEW 1200 sq. ft. 1 1/2 bath, 3 br., full bath, walkout basement, full finished basement. Possible land contract. \$179,500.
• CONDON - End unit on a beautiful lake in Northville, 3 bedroom, 2 1/2 baths. Priced to sell at \$89,900.
• IMAGINE 2200+ sq ft of living space on 1/2 acre waterfront lot for under \$185,000. Central air, fireplace, 1st floor laundry.
• SPACIOUS RANCH Co-op with 1 car attached garage a partially finished basement offers formal dining room plus much more. Enjoy this community. \$71,000.

LABOR DAY EARLY DEADLINES
Monday Buyers Director: Prickey, Harland, Fowlerville Shopping Guides: Pinckney, Hartland, Fowlerville Buyers Director; and Wednesday Buyers Director meetings are on Thursday, September 3rd at 3:00pm

RED CARPET REALTY NORTHERN PROPERTIES, INC.
(616) 258-9300
P.O. Box 1093-3173, Maple St., Kalamazoo, MI 49004

Golf Course Frontage from \$169,900
Sales by ERA GRIFFITH REALTY
313-227-9944
HOURS: 1:00 - 5:00 Daily Closed Thursday

HERITAGE REAL ESTATE
409 N. MAIN ST., MILFORD 684-5346 478-6810
HERITAGE HOME OF THE WEEK
HERITAGE REALTY INC.

REMEMBER REMERICAL
VILLAGE SQUARE REALTORS*
330 N. CENTER NORTHVILLE 349-5600
NORTHVILLE - JUST LISTED! Wonderful brick ranch features 2 fireplaces and a walkout bsmt w/finished rec. room. Full custom deck w/overlooks the nearly 3/4 acre lot. Nicely maintained. Ask for Barry Greenleaf 189,500.
WOW! \$129,900 buys you this large colonial over 2200 sq. ft. Your family will love the large FR/WFP, big bedrooms and great location near parks.

REMEMBER REMERICAL
VILLAGE SQUARE REALTORS*
330 N. CENTER NORTHVILLE 349-5600
NORTHVILLE - THE ULTIMATE ACRE! Superbly landscaped acre lot sets the tone for this wonderful 4 BR contemporary home loaded with amenities. This is better than new! 248,900.

085 Rooms For Rent

HOWELL. In trailer \$50 per week. (517)548-9533.

MILFORD/Highland/White Lake. House privileges, \$68 per week. (313)887-4387.

MILFORD. Will rent 1 or 2 rooms, or entire house. Country setting, 5 acres, horse barn. 2 min away from river for fishing & canoeing. Eves. (313)685-0912

NORTHVILLE. \$65 per week. (313)476-5227. 113 W. Main Street.

SOUTH LYON. Male preferred, house privileges. Need deposit. (313)486-3805 after 6pm.

WANTED: sleeping room for commuting gentleman from out of state, to rent on monthly basis. Reply by mail: P.O. Box 1583, Brighton.

087 Condominiums, Townhouses For Rent

HOWELL. Burwick Glens Condominiums. New 2 br., 2 bath condo in quiet section. Includes garage, washer, dryer, appliances. No pets. Call Bob (517)546-2380 days (517)546-7650 eves.

NORTHVILLE. Large 2 br. townhouse. 1 1/2 bath, finished basement, patio, fireplace, water & heat included, available Oct. 1st no pets. \$850 plus security. (313)464-6066.

NOVI. 2 br. carriage unit. No pets. \$550 per mo. (313)477-3047.

089 Mobile Home Sites For Rent

HOWELL. Single wide lots, country setting, 2520 Pine Cone. No phone calls.

OLD Dutch Farms. Manufactured Housing Community. South Lyon schools. Club house, off street parking, RV storage, single wide sites available. Rent special \$189/month for 1 year on new homes brought into the community! (313)349-3949.

NEW HUDSON. Would like to share home with female, \$200/mo., 1/3 heat/electric bill. Interested. (313)437-2234.

090 Living Quarters To Share

NOVI. \$350 per mo. includes utilities, call after 6pm, (313)348-0940.

SINGLE business man wishes to share upscale Brighton area home or condo. (313)227-0796

SOUTH LYON. Downtown. Apt to share, \$225 mo., plus 1/2 utilities, deposit. (313)437-0903.

091 Industrial, Commercial For Rent

BRIGHTON. Downtown Main St. retail space, 1,650sq.ft., (313)227-9633.

BRIGHTON. Old US 23 Commerce Center now leasing two units. 2400 sq.ft. & 900 sq.ft. (313)227-3650.

BRIGHTON. area. 4100 sq.ft. to 79,000 sq.ft. industrial space, docks, overhead doors, 3 phase electric, direct X-way access, low prices. 20th Century, (313)231-3300.

BRIGHTON. shop 1500-2000 sqft 1 1/2 miles from I-96, ample parking. Call evenings. (313)229-6857.

COMMERCIAL or light industrial. 1500sq.ft. production or warehouse area including small office. \$625/mo., plus heat and electric. (313)227-1750.

HOWELL. 4500 sq.ft. storefront with attached garage. \$1300 monthly. Howell Discount Appliance, (517)548-1300.

092 Buildings & Halls For Rent

MILFORD hall for rent. Wedding receptions, showers, parties, etc. (313)685-9008/(313)685-8331.

093 Office Space For Rent

2 OFFICES, located on Grand River in Howell (517)546-4800 (517)546-8952

AFFORDABLE OFFICE SUITES (Best Deal in Town)

Downtown Northville or Plymouth. From only \$275 monthly and up for new office suites. Call Judy for details. (313)433-1100.

BRIGHTON. Prime Grand River office space, single office or up to 1200 sq.ft. available. (313)227-3710 or (313)349-5812.

BRIGHTON. 1 & 2 room office suites. In Summerwood Center. (313)227-2146

BRIGHTON. Newly constructed office space, 840-2800sq.ft. Very nice. (313)227-2146

BRIGHTON right off I-96 exit, 4400 sq.ft. immediate occupancy, excellent for engineer's or head quarters facility. First Realty Brokers, (517)546-9400.

094 Vacation Rentals

33FT. Starchase motorhome, everything for luxurious vacation. \$985/wk. (313)685-8251.

BARTON CITY, MI. Jewel Lake. Completely equipped lakfront cottages for rent, boats provided. Reservations (517)546-1618 or (517)736-6083.

DISNEY/EPCOT... Universal studios, 1 1/2 miles away, luxury 2 & 3 br, 2 bath condos. Washer, dryer, microwave, pool, jacuzzi, tennis courts, from \$325 weekly. 1-800-486-5150 days (313)478-9713 evenings.

096 Storage Space For Rent

BRIGHTON. Approx 700sq.ft. of storage w/small office attached. Near expressways, no vehicles. \$300 a mo. (517)546-6348, 9am-9pm.

MILFORD. downtown office suite, parking. (313)685-2203

INDOOR car storage available, \$35 mo. New Hudson Airport, (313)437-2333.

MILFORD. Warehouse space for rent. (313)685-2868

097 Wanted To Rent

WANTED to rent in Howell area, sleeping room for out-of-state supervisor on midnight shift. Need room 8am to 8pm on Tuesday, Wednesday and Friday. Call (419)837-2206 and leave name & number or write to: 3561 Truman Road #28, Perrysburg, OH 43551.

When you give blood you give another birthday, another anniversary, another laugh, another hug, another chance. American Red Cross



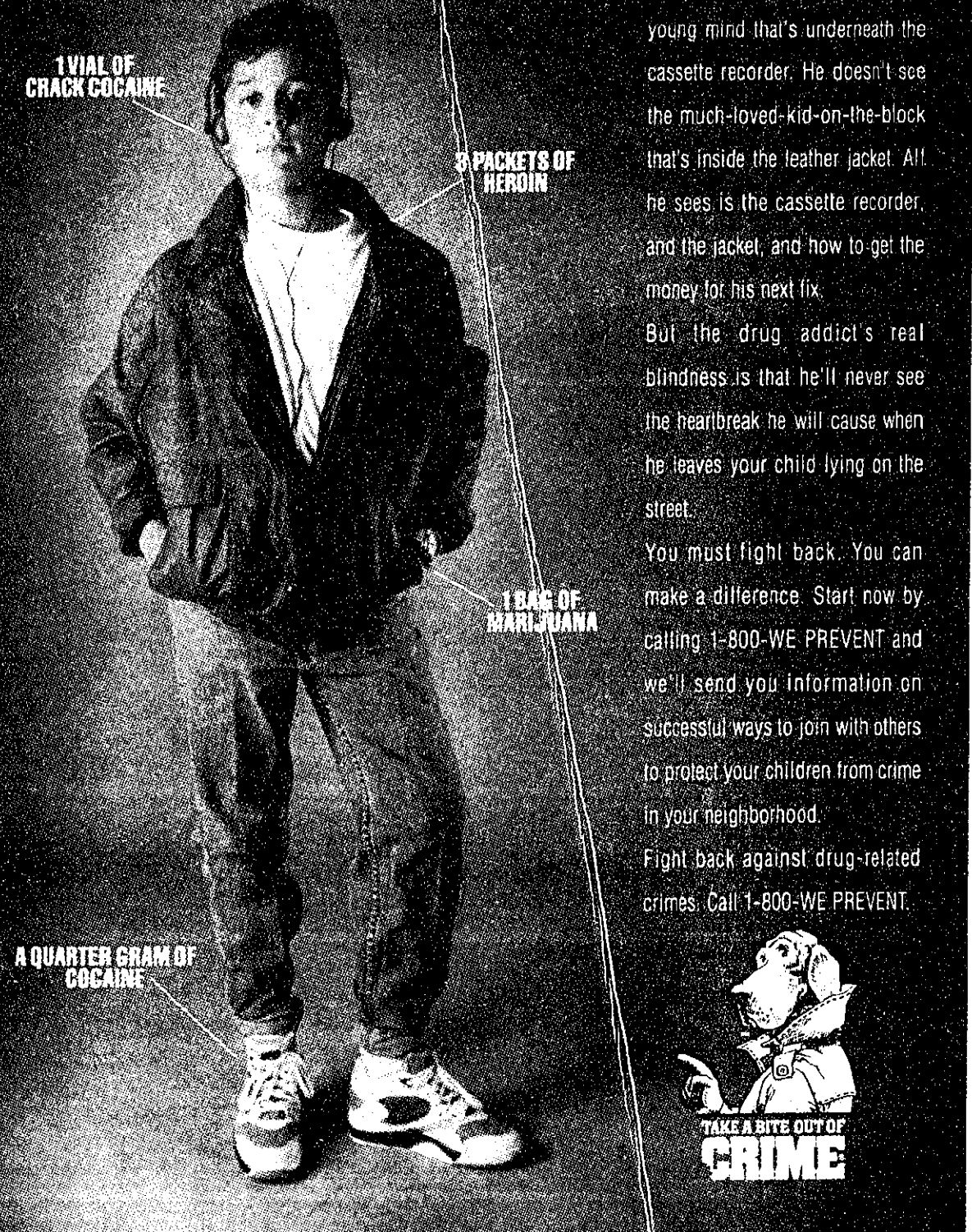
To fight crime in Philly, people plant posies.

"The bad part of town." Abandoned cars. Sidewalks scattered with crack vials. Bombed-out buildings. A neighborhood whose spirit is as broken as the bits of glass that dot the street. There are only two things to do if your neighborhood becomes a war zone: give up or take action. **The Philadelphia Story** One day, in the "bad part" of Philadelphia, a neighbor complained to a neighbor. And then to another. And then to more. People didn't like their homes being "taken over." Feelings of helplessness and resentment turned to action. They went to the police for help. Soon a substation was established where folks could readily report crime. Weekly meetings began. Community watches started. Things

started getting fixed up. Vacant lots were cleaned up and fenced. Abandoned cars were towed away. Painting and repairing programs began. The neighborhood was cleaning itself up. The local 4-H Club even helped set up garden clubs where kids, teens and adults could work together on plants and flowers while talking over ways to raise awareness. When people care and get involved, neighborhoods change. When a block doesn't look like a haven for crime and drugs, it won't be. And in this part of Philly, where once only apathy grew, seven gardens now bloom. This is only one success story of many. To find out what can be done in your neighborhood, write: **The McGruff Files, 1 Prevention Way, Washington, D.C., 20639-0001.** And help...



THIS IS HOW A DESPERATE DRUG ADDICT SEES YOUR CHILD.



He doesn't see the energetic, young mind that's underneath the cassette recorder. He doesn't see the much-loved kid-on-the-block that's inside the leather jacket. All he sees is the cassette recorder, and the jacket, and how to get the money for his next fix. But the drug addict's real blindness is that he'll never see the heartbreak he will cause when he leaves your child lying on the street. You must fight back. You can make a difference. Start now by calling 1-800-WE PREVENT and we'll send you information on successful ways to join with others to protect your children from crime in your neighborhood. Fight back against drug-related crimes. Call 1-800-WE PREVENT.



A message from the Crime Prevention Coalition, the U.S. Department of Justice and the Advertising Council. © 1989 National Crime Prevention Council.

Ad Council

Crime Prevention Coalition and U.S. Department of Justice

**CLASSIFIED
GREEN SHEET**



Palm Beach Patio in Novi sells a variety of outdoor furniture.

Photo by BRYAN MITCHELL

Palm Beach Patio helps enjoy outdoors at home

By RICK BYRNE
Copy Editor

If experience were the great teacher it's cracked up to be, Jane Fedrigo would probably still be in the business-person's equivalent of first grade.

But her sly smile and wisecracking nature implies a quick wit. It's not hard to understand how one with little retail training could become the successful owner of Palm Beach Patio, a Novi store which sells a wide selection of outdoor furniture. In fact, the store in the Novi Town Center is just one of two locations. A second Palm Beach Patio is on M-59 in Waterford.

As Fedrigo explains it, she got into the business almost by accident.

"We had just bought a house in Livonia, and we put a deck in the back," she said. "I needed furniture for the deck so I went looking around. I ended up going to Florida to get what I wanted, and ended up buying a truckload. So I thought I'd open a store to get rid of it."

What she had bought was patio furniture made from PVC (polyvinyl chloride) tubing. At the time, it was hard to find outside of the Southeast.

"I fell in love with PVC, but there wasn't any up here," Fedrigo said. So she went into business, working directly with suppliers in Florida, and trucking the merchandise to Michigan.

Before she opened her doors, Fedrigo had no formal training in how to run a business.

"I had done some accounting," she said. "I had gone to college and dropped out. I had no retail experience outside of odd jobs."

But Fedrigo feels that her lack of experience, combined with a little creative ingenuity has been the secret to her success.

"It works because I don't have a closed mind," she said. "If I had a heavy retail background, I probably wouldn't be so willing to try new things."

Take for example, her origins as a seller of PVC patio furniture. After a few years as the choice of the trendy, PVC furniture slipped out of the mainstream just as quickly.

"I don't carry much of it anymore," said Fedrigo. "It's the best stuff on the market, but there's not much eye appeal. It's bulky. They have to use thicker tubing for strength, so they can't do any thin, graceful designs."

So Fedrigo has moved on to steel, aluminum and wrought iron furniture. With more structural rigidity than the PVC, the metal designs can be more intricate. They also can withstand the stresses of motion furniture; that is, anything that swings, swivels or rocks.

"The business really grew," Fedrigo said. "People don't like to sit still now. You can get high backs and tables. People like all the bells and

whistles.

"The category really has expanded beyond the traditional redwood."

In addition to deck chairs, chaises, love seats and tables, Palm Beach Patio stocks indoor bar stools. The store also stocks those little accessories you might not think of like free-standing ashtrays; it also has the big stuff like party canopies.

There is a selection of rattan and wicker furniture, and Fedrigo may offer dinner sets in the fall.

The new designs fit well with the wood decks and brick patios so favored in this area.

"Wrought iron on a brick patio looks gorgeous," said Fedrigo. "It really achieves that decorator look."

Another practice at Palm Beach Patio that flies in the face of common business practice is the wide selection, not only of styles, but of colors as well. Looking around the brightly lit showroom, you can spot the same furniture in several colors and fabrics. The splashes of color aren't just a simple tribute to Fedrigo's creative side.

"We seldom offer a set on the floor in just one color," Fedrigo said. "Many of them are in five or six or more. It's harder to inventory that way, but it's one of our biggest benefits."

"It's what I call the 'doughnut shop syndrome.' When you go into a

Continued on 2

After all, you use it six days a week, 52 weeks a year... make it special.



344-2850
We do the whole job, installation and all. We specialize in vandal resistant 1/4" steel Mail Boxes. Call today for a free color catalogue, estimates, and details. Also makes a wonderful gift.



G. WILLIKER'S
EATERY & SPIRITS
437-7693
Grand River and Milford Roads
New Hudson
Any Day, Any Time through September 15, 1992
Please present this coupon to server

25% Kids Discount
under 12

A & R Soil Source
"Landscaping Supplies"

Complete Lawn Spraying Service

- Patio Stones
- Driveway Stone
- Sand • Grass Seed
- Top Soil • Decorative Stone
- Peat • Edging
- Weed Barriers
- Shredded Bark • Wood Chips
- Stone • All Sizes
- Tree Rings • Canyon Stone

DELIVERY OR PICK-UP
(by the yard or bag)

\$5.00 off
Delivery on 5 yds. or more only
one coupon per purchase • expires 9-10-92

23655 Griswold Rd. • South Lyon
5th Driveway south of 10 Mile
437-8103

PRE LABOR DAY SALE
ONE DAY ONLY!!
SATURDAY, SEPTEMBER 5th
9 am to 7 pm
BIGGER-BETTER AND BEFORE ANYONE ELSE...

UP TO 65% OFF
PRICES SLASHED ON EVERYTHING!!!

PLUS!!!
Huron Valley Furniture PAYS YOUR SALES TAX!!
9-5-92 only!!!

10 Hours of SUPER SAVINGS ON OVER \$500,000 Worth of Name Brand Quality Furniture.

Huron Valley Furniture

- We specialize in solid oak
- Quality furniture at affordable prices!
- Free delivery and set-up
- Visa, Mastercard and Discover Cards Welcome
- 90 days same as cash with approved credit

319 N. Main St., Milford 684-2265

Finish What You Started!
...Get Back to Work on School!

JOB TRAINING Can Lead to a HIGH SCHOOL DIPLOMA

Medical Office Assistant
480 Hours
You'll learn to work alongside a doctor assisting in patient treatment and performing administrative duties in a doctor's office or a clinic. Learn to record vital signs, run EKGs, give injections, and perform basic lab procedures. The medical office assistant also schedules appointments, processes patient charts, and is responsible for customer and insurance billings. Morning or evening classes available. All books supplied.

Computer Operations
480 Hours
Learn basic through advanced word processing, database management and spreadsheets or gain valuable exposure to desktop publishing or computer repair. Included will be keyboarding, DOS, Word Perfect and electronic accounting using the latest software. Skills needed for employability, job-seeking, and interviewing will be an ongoing part of the program.

No cost to high school dropouts and G.E.D. holders without high school diplomas thanks to South Lyon Community Education.

The next few weeks can change the rest of your life!

You've invested many years in your education... you should be getting something out of it! But it's not going to pay off until you finish the process by learning the skills to get a good-paying job... and get your high school diploma. The Medical Office Assistant and Computer Operations programs can earn credits towards high school completion. So you can work toward that diploma at the same time you're building a brand new career.

This course is offered by South Lyon Community Education at no cost to you. It includes books and supplies and placement assistance upon completion of program. There is simply no reason not to take advantage of this once-in-a-lifetime opportunity.

Classes Begin Next Week

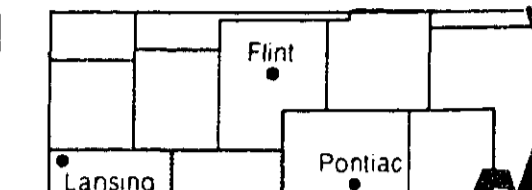
• Job placement assistance available on completion.
• Books and supplies included at no cost.

Call 1-800-82-BEGIN
1-800-822-3446 Ext. 289
Marketwise Educational Hotline

IMPROVE YOUR LIFE!

GREEN SHEET CLASSIFIEDS

Over 75,000 circulation every week



Absolutely Free
All items offered in this 'Absolutely Free' column...

Holiday Deadline (Labor Day)
Friday 3:30 for Thursday Green Sheet Monday Green Sheet

To place your classified ad:
Pricing: 3 lines \$7.74
Each additional line \$1.74 (non-commercial ads)

Personal
Free
Happy Ads .001
Political Notices .008

Automotive
Motorcycle .201
Snowmobiles .205
Boats & Equipment .210

Arts & Crafts
Antiques .101
Auctions .102
Garage, Moving, Rummage Sales 103

Arts & Crafts
Antiques .101
Auctions .102
Garage, Moving, Rummage Sales 103

Green Sheet Classifieds Appear In: The Northville Record, Novi News, Milford Times, South Lyon Herald, Brighton Angus, Livingston County Press, and can be ordered for the Fowlerville, Pinckney & Hartland Shopping Guide.

001 Free
1988 MARLETTE mobile home, 2260 sq. ft. to move, no gas, etc. \$17646.800.

010 Special Notices
1 TICKET from Detroit to Denver. Continental. To be used prior to Sept. 15.

Helpful TIPS
When placing an ad under one of our animal classifications, always have the correct spelling for the breed or sire on hand.

LABOR DAY EARLY DEADLINES
Monday Buyers Directory: Pinckney, Hartland, Fowlerville Shopping Guides, Fowlerville Buyers Directory...

010 Special Notices (continued)
LAWN tractor, Dymark 1136, needs some repair. \$17546.822.

015 Lost
3 WOODBURNING antique oak stoves, 2 with porcelain 1 with wood.

24 Hour FAX
Now you can send us a Classified Ad via FAX
FAX is Quick, FAX is Accurate

"GET LEGAL"
Building License
Seal by FAX to GREENSHEET
(FAX) 437-9460

Super Crossword
ACROSS 1 Seasons food. 2 Home- (merry).

020 thru 098 are listed in Creative Living
A large grid of numbers for creative living listings.

LAST WEEK'S SOLUTION
A 10x10 grid with numbers and letters corresponding to the previous week's crossword solution.

Arrow Auction Service
Auction is our full time business. Household-Form Estates-Business-Uniforms-Real Estate.

FREE GARAGE SALE KITS
ASK ABOUT YOURS WHEN YOU PLACE YOUR GARAGE SALE AD IN THE GREEN NEWS PAPER OFFICE.

GREEN OAK-1588 Silver Lk.
Antique, collectible, Sat. Sept. 5, 9-5pm.

BRAIN & HELMER AUCTION SERVICE
Auction Service, Real Estate, Broker/Analyst, Lloyd F. Braum

103 Garage, Moving, Rummage Sales
BRIGHTON Sept. 5, 9-5pm. Furniture, household items, books, etc.

103 Garage, Moving, Rummage Sales (continued)
FOWLERVILLE, On the truck sale. Various household items.

MILFORD. Large quantity of antique, fine furniture & misc. collectibles. Sat. Sept. 5, 9-5.

104 Household Goods
TFTT Garage door automatic opener and hardware. \$325.

107 Miscellaneous
TFTT. Sat. Fish saltcod, 36oz aluminum smelt, 2 antique chairs, 2 color TVs, CD record.

109 Computers
IBM compatible base w/printer. 486, 386, 486 hard drive, software, \$675.

121 Farm Equipment
MODEL 1020-4 LOADER Compact and Powerful
2 1/2 hp cylinder sheaved diesel. MF 3200 clutch loader.

RECENT TRADE-INS
* FORD 1300 4WD W/MOWER
* FORD 3500 W/MOWER
* FORD 4000 W/MOWER

111 Farm Products: HAZEN'S Buttery Farms... U-Pick... 112 U-Pick: RED Haven peaches and U-pick... 113 Electronics: SECOND cutting of hay... 114 Building Materials: WANTED: Framing Carpenter... 115 Wood Stoves: SWEET Corn & fresh vegetables... 116 Farm Products: SWEET Corn & fresh vegetables...

117 Firwood: ALL ADS TO APPEAR UNDER THIS CLASSIFICATION MUST BE PREPAID... 118 Building Materials: CASE 350 new bowler... 119 Lawn, Garden & Snow Equipment: FORD 100 riding lawn mower... THESIER Equipment Co. 233-4227

120 Lawn & Garden Materials: 100% SCREENED cedar mulch... 121 Farm Equipment: FALL Special Screened... 122 Business Office Equipment: FORD 3000 gas power steering... 123 Farm Equipment: FORD 3000 gas power steering... 124 Bargain Buy: 5400 new wood miter...

125 Breeder's Directory: AKC Pompano, Mini & Toy... 126 BARGAIN BUY: You can advertise any item that is \$10 or less for only \$3.50... 127 Musical Instruments: GERMANY'S Best Quality... 128 HORSES: BLOODHOUNDS, AKC champion... 129 HORSES: PONYMANIA, 8 yr. old female...

130 HORSES: PONYMANIA, 8 yr. old female... 131 HORSES: AMERICAN ESANO ponies... 132 HORSES: AUSTRALIAN Cattle dog... 133 HORSES: AUSTRALIAN Shepherds... 134 HORSES: BEAGLE Puppies... 135 HORSES: ADOPTABLE cats available...

136 HORSES: BLOODHOUNDS, AKC champion... 137 HORSES: PONYMANIA, 8 yr. old female... 138 HORSES: AMERICAN ESANO ponies... 139 HORSES: AUSTRALIAN Cattle dog... 140 HORSES: AUSTRALIAN Shepherds... 141 HORSES: BEAGLE Puppies... 142 HORSES: ADOPTABLE cats available...

REACH OVER 165,000 POTENTIAL CUSTOMERS EVERY WEDNESDAY AND 136,000 EVERY MONDAY... DEADLINE IS FRIDAY AT 3:30 P.M. HOUSEHOLD SERVICE AND BUYERS DIRECTORY... Livingston County Phone 227-4438 or 549-2570... Oakland County 437-4133, 348-3022, 688-8705 or 689-2121... Wayne County 348-3022... Washtenaw County 227-4436

REACH OVER 165,000 POTENTIAL CUSTOMERS EVERY WEDNESDAY AND 136,000 EVERY MONDAY... DEADLINE IS FRIDAY AT 3:30 P.M. HOUSEHOLD SERVICE AND BUYERS DIRECTORY... Livingston County Phone 227-4438 or 549-2570... Oakland County 437-4133, 348-3022, 688-8705 or 689-2121... Wayne County 348-3022... Washtenaw County 227-4436

INDEX - Accounting: 301 Insurance Photography... Architecture: 313 Archival... Automotive: 302 Auto Detailing... Cleaning: 303 Carpet Cleaning... Construction: 314 Asphalt... Home Services: 304 Handyman... Landscaping: 305 Lawn Care... Painting: 306 Exterior... Pest Control: 307 Ant Termite... Plumber: 308 Drainage... Remodeling: 309 Kitchen... Roofing: 310 Siding... Sealing: 311 Window Treatments... Sewing: 312 Sewing... Trenching: 313 Trenching... Tree Service: 314 Tree Service... Water Treatment: 315 Water Treatment... Window Treatments: 316 Window Treatments... Woodworking: 317 Woodworking...

326 Basement Waterproofing: BASEMENT WATERPROOFING... 333 Brick, Block, & Cement: A-1 Brick Masonry... 336 Carpentry: K & J Carpentry... 337 Remodeling: G.T.S. Concrete... 338 Painting: TRENCH foundations... 339 Plumbing: WATSON Concrete Construction... 340 Remodeling: AMES BROS. CEMENT COMPANY... 341 Remodeling: MAYFLOWER KITCHENS... 342 Remodeling: ADDITIONS, Remodeling... 343 Remodeling: R. Berard Co. Inc. CEMENT CONSTRUCTION... 344 Remodeling: BROTHERS IN TRADE... 345 Remodeling: ADVANCED Porch & Concrete... 346 Remodeling: SHIRAMAR INC... 347 Remodeling: C & R Krause... 348 Remodeling: MARCUCCI CONSTRUCTION... 349 Remodeling: JOHN'S ALUMINUM... 350 Remodeling: MICHIGAN ALL PRO... 351 Remodeling: MARCUCCI CONSTRUCTION... 352 Remodeling: JOHN'S ALUMINUM... 353 Remodeling: MICHIGAN ALL PRO... 354 Remodeling: MARCUCCI CONSTRUCTION...

346 Carpentry: A-1 CARPENTRY... 347 Remodeling: G.T.S. Concrete... 348 Remodeling: AMES BROS. CEMENT COMPANY... 349 Remodeling: MAYFLOWER KITCHENS... 350 Remodeling: ADDITIONS, Remodeling... 351 Remodeling: R. Berard Co. Inc. CEMENT CONSTRUCTION... 352 Remodeling: BROTHERS IN TRADE... 353 Remodeling: ADVANCED Porch & Concrete... 354 Remodeling: SHIRAMAR INC... 355 Remodeling: C & R Krause... 356 Remodeling: MARCUCCI CONSTRUCTION... 357 Remodeling: JOHN'S ALUMINUM... 358 Remodeling: MICHIGAN ALL PRO... 359 Remodeling: MARCUCCI CONSTRUCTION...

428 Gutters: A-PLUS Seamless Aluminum... 429 Handymen: 1 ALL jobs considered... 430 Excavating: AAA Excavating... 431 Exterior: Cantello's POWER WASHING SERVICE... 432 Hauling: R. Berard Co. Inc. CEMENT CONSTRUCTION... 433 Heating: ALPINE Heating & Air Conditioning... 434 Heating: ROBERT CARTEL Heating... 435 Heating: ALPINE Heating & Air Conditioning... 436 Heating: ROBERT CARTEL Heating... 437 Heating: ALPINE Heating & Air Conditioning... 438 Heating: ROBERT CARTEL Heating... 439 Heating: ALPINE Heating & Air Conditioning... 440 Heating: ROBERT CARTEL Heating...

440 Fences: FENCES for all needs... 441 Floor Service: BEARWOOD INTERIORS... 442 Garage Door: GARAGE doors and openers... 443 Heating: ALPINE Heating & Air Conditioning... 444 Heating: ROBERT CARTEL Heating... 445 Heating: ALPINE Heating & Air Conditioning... 446 Heating: ROBERT CARTEL Heating... 447 Heating: ALPINE Heating & Air Conditioning... 448 Heating: ROBERT CARTEL Heating... 449 Heating: ALPINE Heating & Air Conditioning... 450 Heating: ROBERT CARTEL Heating... 451 Heating: ALPINE Heating & Air Conditioning... 452 Heating: ROBERT CARTEL Heating... 453 Heating: ALPINE Heating & Air Conditioning... 454 Heating: ROBERT CARTEL Heating... 455 Heating: ALPINE Heating & Air Conditioning...

456 Trenching: 5/2 Trenching... 457 Upholstery: SMITHS Upholstery... 458 Wallpapering: 1 WALLPAPERING... 459 Sewing: PAPER Hanging... 460 Wedding Service: CHEESECAKES... 461 Wedding Service: AFFORDABLE home TV... 462 Wedding Service: WESTMORELAND... 463 Wedding Service: AFFORDABLE home TV... 464 Wedding Service: WESTMORELAND... 465 Wedding Service: AFFORDABLE home TV... 466 Wedding Service: WESTMORELAND...

361 Accounting: 301 Insurance Photography... 362 Air Conditioning: BEAT the Heat... 363 Appliance Service: SAPHO Appliance Repair... 364 Architecture: CAE Computer Assisted Drafting... 365 Asphalt: BURBANK CONSTRUCTION... 366 Automobile: JOHN'S ALUMINUM... 367 Business Services: JBJ Business Services... 368 Cleaning: Sparkling Clean... 369 Computer: CAE Computer Assisted Drafting... 370 Construction: BURBANK CONSTRUCTION... 371 Electric: MICHIGAN ALL PRO... 372 Excavating: AAA Excavating... 373 Home Services: Handyman... 374 Insurance: JBJ Business Services... 375 Landscaping: Maple Ridge... 376 Painting: TRENCH foundations... 377 Pest Control: GARDEN... 378 Plumbing: WATSON Concrete Construction... 379 Remodeling: AMES BROS. CEMENT COMPANY... 380 Roofing: WATSON Concrete Construction... 381 Siding: MAYFLOWER KITCHENS... 382 Sewing: PAPER Hanging... 383 Trenching: 5/2 Trenching... 384 Tree Service: WESTMORELAND... 385 Window Treatments: JBJ Business Services... 386 Woodworking: JOHN'S ALUMINUM... 387 Window Treatments: JBJ Business Services... 388 Woodworking: JOHN'S ALUMINUM... 389 Window Treatments: JBJ Business Services... 390 Woodworking: JOHN'S ALUMINUM...

386 Electrical: CERAMIC tile... 387 Electrical: ACTION Electric... 388 Electrical: CERAMIC tile... 389 Electrical: ACTION Electric... 390 Electrical: CERAMIC tile... 391 Electrical: ACTION Electric... 392 Electrical: CERAMIC tile... 393 Electrical: ACTION Electric... 394 Electrical: CERAMIC tile... 395 Electrical: ACTION Electric... 396 Electrical: CERAMIC tile... 397 Electrical: ACTION Electric... 398 Electrical: CERAMIC tile... 399 Electrical: ACTION Electric... 400 Electrical: CERAMIC tile... 401 Electrical: ACTION Electric... 402 Electrical: CERAMIC tile... 403 Electrical: ACTION Electric... 404 Electrical: CERAMIC tile... 405 Electrical: ACTION Electric... 406 Electrical: CERAMIC tile... 407 Electrical: ACTION Electric... 408 Electrical: CERAMIC tile... 409 Electrical: ACTION Electric... 410 Electrical: CERAMIC tile... 411 Electrical: ACTION Electric... 412 Electrical: CERAMIC tile... 413 Electrical: ACTION Electric... 414 Electrical: CERAMIC tile... 415 Electrical: ACTION Electric...

408 Fences: FENCES for all needs... 409 Floor Service: BEARWOOD INTERIORS... 410 Garage Door: GARAGE doors and openers... 411 Heating: ALPINE Heating & Air Conditioning... 412 Heating: ROBERT CARTEL Heating... 413 Heating: ALPINE Heating & Air Conditioning... 414 Heating: ROBERT CARTEL Heating... 415 Heating: ALPINE Heating & Air Conditioning... 416 Heating: ROBERT CARTEL Heating... 417 Heating: ALPINE Heating & Air Conditioning... 418 Heating: ROBERT CARTEL Heating... 419 Heating: ALPINE Heating & Air Conditioning... 420 Heating: ROBERT CARTEL Heating... 421 Heating: ALPINE Heating & Air Conditioning... 422 Heating: ROBERT CARTEL Heating... 423 Heating: ALPINE Heating & Air Conditioning... 424 Heating: ROBERT CARTEL Heating... 425 Heating: ALPINE Heating & Air Conditioning... 426 Heating: ROBERT CARTEL Heating... 427 Heating: ALPINE Heating & Air Conditioning... 428 Heating: ROBERT CARTEL Heating... 429 Heating: ALPINE Heating & Air Conditioning... 430 Heating: ROBERT CARTEL Heating...

430 Excavating: AAA Excavating... 431 Exterior: Cantello's POWER WASHING SERVICE... 432 Hauling: R. Berard Co. Inc. CEMENT CONSTRUCTION... 433 Heating: ALPINE Heating & Air Conditioning... 434 Heating: ROBERT CARTEL Heating... 435 Heating: ALPINE Heating & Air Conditioning... 436 Heating: ROBERT CARTEL Heating... 437 Heating: ALPINE Heating & Air Conditioning... 438 Heating: ROBERT CARTEL Heating... 439 Heating: ALPINE Heating & Air Conditioning... 440 Heating: ROBERT CARTEL Heating... 441 Heating: ALPINE Heating & Air Conditioning... 442 Heating: ROBERT CARTEL Heating... 443 Heating: ALPINE Heating & Air Conditioning... 444 Heating: ROBERT CARTEL Heating... 445 Heating: ALPINE Heating & Air Conditioning... 446 Heating: ROBERT CARTEL Heating... 447 Heating: ALPINE Heating & Air Conditioning... 448 Heating: ROBERT CARTEL Heating... 449 Heating: ALPINE Heating & Air Conditioning... 450 Heating: ROBERT CARTEL Heating...

450 Painting: EDWARDS LANDSCAPING... 451 Pest Control: GARDEN... 452 Piano Tuning: JOHN MCCREARY... 453 Pole Buildings: WESTMORELAND... 454 Photography: AFFORDABLE home TV... 455 Remodeling: AMES BROS. CEMENT COMPANY... 456 Remodeling: MAYFLOWER KITCHENS... 457 Remodeling: ADDITIONS, Remodeling... 458 Remodeling: R. Berard Co. Inc. CEMENT CONSTRUCTION... 459 Remodeling: BROTHERS IN TRADE... 460 Remodeling: ADVANCED Porch & Concrete... 461 Remodeling: SHIRAMAR INC... 462 Remodeling: C & R Krause... 463 Remodeling: MARCUCCI CONSTRUCTION... 464 Remodeling: JOHN'S ALUMINUM... 465 Remodeling: MICHIGAN ALL PRO... 466 Remodeling: MARCUCCI CONSTRUCTION... 467 Remodeling: JOHN'S ALUMINUM... 468 Remodeling: MICHIGAN ALL PRO... 469 Remodeling: MARCUCCI CONSTRUCTION...

468 Janitorial Service: FRANK'S Tree Floor... 469 Landscaping: LANDSCAPE & BUILDING SUPPLIES... 470 Musical Instruction: JERRY'S PAINTING... 471 Painting: HOENCK LANDSCAPING... 472 Painting: PAINTING... 473 Painting: HOENCK LANDSCAPING... 474 Painting: PAINTING... 475 Painting: HOENCK LANDSCAPING... 476 Painting: PAINTING... 477 Painting: HOENCK LANDSCAPING... 478 Painting: PAINTING... 479 Painting: HOENCK LANDSCAPING... 480 Painting: PAINTING... 481 Painting: HOENCK LANDSCAPING... 482 Painting: PAINTING... 483 Painting: HOENCK LANDSCAPING... 484 Painting: PAINTING... 485 Painting: HOENCK LANDSCAPING... 486 Painting: PAINTING... 487 Painting: HOENCK LANDSCAPING... 488 Painting: PAINTING... 489 Painting: HOENCK LANDSCAPING... 490 Painting: PAINTING... 491 Painting: HOENCK LANDSCAPING...

WE BUY USED CARS, TRUCKS, & VANS ALL YEARS & MODELS TOP \$ PAID

CALL LARY CLAWSON AT (517) 548-4744 or 1 (800) 800-6930 OR BILL TOMS AT (313) 229-8800

CHAMPION CHEVROLET-GEO

240 Automobiles Over \$1,000

1987 OLDSMOBILE 4 dr. w/ 90 cassette, air, 50,000 miles. \$5,000. (313)229-2740.

1987 HONDA CRUISER Loaded, sunroof and Goodyear radial tires. Dealer's freshen in color. No one else. Call: (313)546-1751.

Continental Signature Series 88 Every available option. Low miles, warranty, extra clean, reduced to \$9495. Call 227-1171. Brighton Ford Mercury

1988 BUICK Regal custom, power steering, brakes, am/fm cassette, cruise, air, 41,000 miles. \$6,800. (313)946-5344.

1988 CAVALIER Power steering, brakes, am/fm cassette, cruise, air, 41,000 miles. \$6,800. (313)946-5344.

1988 COUGAR V6 auto, loaded with options, etc. \$5,200.00. (313)946-5344.

1988 COUGAR XR7 (special edition), V-6, 50,000 miles, loaded. \$4,650.00. (313)229-2500.

1988 DOUGER 5 speed, sunroof, cassette, 50,000 miles. \$5,000. (313)946-5344.

1988 DOUGER Daytona, midnight blue, like new, sunroof, air, \$7,000. \$5,000. (313)622-7028.

1988 ESCORT GT 5 speed, auto, cassette, daughter gone to college. \$4,350. (313)348-2289.

1988 HONDA Accord LX 4 door, 5 speed, cruise, air, stereo cassette, 41,000 miles, etc. \$7,900. (313)946-5344.

1988 MERCURY Grand Marquis 4 dr. Florida car, never exposed to snow or salt, exceptionally good! Must see! (313)229-8112.

1988 TAURUS 3.0 V6, auto, 4 door, loaded, etc. \$6,200.00. (313)684-8740.

1988 COUGAR XR7 (special edition), V-6, 50,000 miles, loaded. \$4,650.00. (313)229-2500.

1988 CADILLAC DeVille Black w/boob interior, 67,000 miles. Etc. \$13,000. (313)746-4292.

1988 CAVALIER 2 dr., 5 speed, dark gray, am/fm cassette, 71,000 miles. \$5,000.00. Call 227-1171.

1988 CHRYSLER LeBaron Coupe turbo, new tires, shocks, loaded, sun roof, leather, etc. (313)229-1680.

1988 CHRYSLER LeBaron 4 cylinder turbo, new tires, shocks, loaded, sun roof, leather, etc. (313)229-1680.

1989 MERCURY Sable wagon, Air, cruise, air wheel, 3rd seal, 91000 miles, must see! \$6,700. (313)787-6629.

1989 MERCU XR 4TL red with black interior, fully loaded, 27,000 miles, extended warranty, \$11,000. (313)229-0589.

1989 HONDA Prelude SL White loaded, exc. cond. 5 speed, 38,000 highway miles, 58000 or best. MUST SEE!! (313)229-1952.

1990 ESCORT LX 4 door hatch Auto, power steering, brakes, air, sunroof, 60,000 miles. \$4,900. (317)548-4632.

1990 GEO Metro LSI. Am/fm cassette, air, rear defog. \$3,800.00. (517)548-4632.

Ford Explorer '91 4 dr. Eddie Bauer, extra clean, loaded. A Must See Only 14,995. Call 227-1171. Brighton Ford Mercury

Tracer Wagon '91 Automatic, air, low, low miles, showroom new. Best offer takes it home! Call 227-1171. Brighton Ford Mercury

Ford Taurus '91 Loaded, extra clean. 3 to choose, starting at \$9995. Call 227-1171. Brighton Ford Mercury

Explorer XLT '91 4 dr., completely loaded, extra clean, must see. Best offer takes it home! Call 227-1171. Brighton Ford Mercury

Escort LX '91 Automatic, air, power, steering & brakes & much, much more. 6 to choose, starting at \$6995. Call 227-1171. Brighton Ford Mercury

Ford Escort GT '91 Low, low miles, red & ready. Best offer takes it home! Call 227-1171. Brighton Ford Mercury

Open M & Th 9-9 CAR & TRUCK SALE Extended warranties available!

Sat 9-4

86 CHEVY 3/4 TON FULL-SIZE CONVERSION VAN \$119 Mo. \$AVE

85 CHEROKEE \$99 Mo. \$AVE

88 S15 PICKUP \$79 Mo. \$AVE

88 CORSICA \$129 Mo. \$AVE

86 ESCORT GT 2 DR. \$119 Mo. \$AVE

88 GMC FULL-SIZE 4X4 \$119 Mo. \$AVE

CHAMPION CHEVROLET TRUCKS

85 CELEBRITY \$89 Mo. \$AVE

86 SPRINT \$91 Mo. \$AVE

89 ESCORT LX 2 DR. \$116 Mo. \$AVE

86 CAVALIER \$113 Mo. \$AVE

88 SHADOW \$99 Mo. \$AVE

LOANS

- Slow pay
- Divorce
- Low down payment
- Bankruptcy
- No credit

WE CAN HELP YOU!

Call for an appointment: 1-800-800-6930

CHAMPION CHEVROLET TRUCKS

Howell Lot 1-800-800-6930

904 E. Grand River Howell

Grand Marquis LS Brougham '89

4 dr., loaded, extra clean, reduced to \$6995. Call 227-1171. Brighton Ford Mercury

Ford Probe '90

Air, styled wheels & much, much more, red, red, red. Best offer takes it home! Call 227-1171. Brighton Ford Mercury

Taurus SHO '89

Loaded, extra clean, a true performer in any car. Best offer takes it home! Call 227-1171. Brighton Ford Mercury

Beretta GT '90

Indy Pace Car, 20,000 miles, every option available, mint condition. Best offer takes it home! Call 227-1171. Brighton Ford Mercury

BRIGHTON FORD DISCOUNT OUTLET

8704 Grand River • Brighton (313) 227-7253 CHECK THESE USED CAR SPECIALS:

85 SUBURU XT COUPE \$3995	88 RANGER 2 to choose \$2995	87 DODGE DAYTONA PACIFICA \$4495	86 MERCURY LYNX \$995
86 CHEVY CAVALIER \$1995	86 FORD TEMPO \$1995	87 DODGE SHADOW \$1995	86 FORD ESCORT \$1995
86 PONTIAC GRAND AM \$3695	86 NISSAN PICKUP \$3895	88 OLDS FIRENZA \$4795	83 CADILLAC COUPE DEVILLE \$3795
89 DODGE COLT GT \$3995	87 CHEVY 2-24 \$3995	85 CHEVY IROC Z \$3995	89 FORD ESCORT \$4295

CHAMPION CHEVROLET TRUCKS

85 CELEBRITY \$89 Mo. \$AVE

86 SPRINT \$91 Mo. \$AVE

89 ESCORT LX 2 DR. \$116 Mo. \$AVE

86 CAVALIER \$113 Mo. \$AVE

88 SHADOW \$99 Mo. \$AVE

1-800-800-6930

MILFORD PUBLIC AUTO AUCTION

Every Wednesday & Saturday

Conveniently located off M-59 at 909 N. Milford Rd.

All makes & models up to '92s

Bankruptcy, dealer trade-ins, privately owned, etc.

201 models reserved for dealers

FINANCING AVAILABLE

FOR MORE INFORMATION CALL: (313) 887-4356

HUGE DISCOUNTS • HIGHEST TRADE-IN ALLOWANCES • OPEN SATURDAY

THE BIGGEST SALE EVER

OVER 1400 CARS AND TRUCKS IN STOCK

4.8% FINANCING SELECT MODELS

STU EVANS LINCOLN MERCURY

WE'RE #1 BECAUSE YOU'RE #1

"THE BEST TRADE-IN PRICE ANYWHERE"

2 Convenient Locations to Serve You

Garden City 32000 FORD ROAD 425-4300

Southgate 16800 FORT STREET 285-8800

West of Merriman Road At Pennsylvania Road

OPEN MON. & THURS. TIL 9 P.M.

\$1000 FACTORY REBATE plus FREE BEDLINER WITH EVERY "F" SERIES TRUCK PURCHASED

'92 THUNDERBIRD

3.8 E.F.I. V-6, auto, O.D., p.s., p.b., p. windows, seat, air, cond., cast alloy wheels, spd control, tilt, dual elec. mirrors, etc. defrost. AM/FM stereo/cassette, clearcoat paint. \$13,390 \$AVE \$4367

'92 TAURUS SHO

3.0 24 valve V-6, 5 spd, p.s., p.b., p. windows, looks, seat, cloth & leather trim, etc. air cond., floor mats, light grp., tilt, spd control cast alloy wheels, keyless entry, p. antenna, leather wheel, AM/FM stereo/cassette, driver air bag, Etc. \$24,548 \$18,390 \$3000 FACTORY REBATE

40 IN STOCK \$359 PER MO. LEASE "O" DOWN ONLY 24 MONTHS

ATTENTION TRUCK BUYERS

We have 100's of hard to find Explorers, Aerostars, Econoline Cargo Vans, Club Wagons, Luxury Van Conversions and F-Series trucks including Crew Cabs, Super Cabs, Dually's and 4x4's. All ready for immediate delivery with rebates up to \$300.

'92 FESTIVA "L" 3 DR.

1.3 E.F.I. 5 spd, p.b., elec. defrost, AM/FM stereo/clock, styled wheels, cloth reclining seats, cassette, tilt, fold rear seat, front wheel drive. \$4017. Attention first time buyers. \$5,590 \$AVE \$1833

'92 TEMPO "GL" 2 DR.

2.3 E.F.I. 5 spd, p.b., air cond, light grp., dual elec. mirrors, tilt, wheel, AM/FM stereo, styled wheels, cloth reclining seats, front wheel drive. \$7,490 \$AVE \$2168

DARE TO COMPARE!! '92 UNIVERSAL VAN CONVERSION

Auto, aux., fuel tank, full power, spd, tilt, AM/FM stereo, air cond, AM/FM stereo, cassette, chrome bumpers, 8500 G.V.W., 5 P225/85R15 HSW, sport wheel covers, exterior graphics, interior linings, door trim, vacuum, removable seatbed, air, floor mats, much, much more. \$15,990

'92 ESCORT "GT"	\$10,990	\$270	24 Months
'92 TAURUS "L" 4 DOOR	\$12,990	\$317	24 Months
'92 ESCORT "LX" 3 DOOR	\$8,790	\$211	24 Months
'92 TEMPO "GL" 4 DOOR	\$9,995	\$256	24 Months
'92 MUSTANG "LX" CONVERT.	\$17,490	\$447	24 Months
'92 MUSTANG "GT" 4X4	\$15,090	\$382	24 Months
'92 CROWN VICTORIA	\$16,590	\$363	24 Months
'92 TAURUS "GL" WAGON	\$15,290	\$360	24 Months
'92 RANGER "XLT" 4X4	\$20,490	\$458	24 Months
'92 F-150 PICKUP	\$16,290	\$379	24 Months
'92 RANGER "XLT" PICKUP	\$7,590	\$199	24 Months

Varsity Ford

3480 JACKSON AT WAGNER, ANN ARBOR, MI 1-94 EXIT #172, TURN LEFT 996-2300 ANN ARBOR

FULL TANK OF GAS WITH EVERY PURCHASE

OPEN MON. & THURS. 9-9 TUES. WED. & FRI. 9-6 OPEN SAT. 9-5 SERVICE NOW! OPEN MON. & THURS. TIL 9 P.M.

CALL TOLL FREE 1-800-875-FORD

MICHIGAN'S "A" PLAN HEADQUARTERS

*Plus tax, license & destination. Rebate computed in price. **Retail Sales Only. ***Closed and non maintenance lease w/15,000 miles per year allowed. \$116 per mile penalty. Lessee has the option to purchase the vehicle at lease end. However, lessee has no obligation to purchase the vehicle at lease end. Lessee is responsible for excessive wear & tear. A security deposit of one month's payment (rounded down) is due at delivery. Plus 4% use tax which is collected monthly. Rebates if any already computed in payment.

STU EVANS SUMMER SALES CLEARANCE!!

RETAIL BUY RETAIL LEASE RETAIL BUY RETAIL LEASE

\$750 CASH BACK OR 7.9% FINANCING FOR 48 MOS.

1992 GRAND MARQUIS

75 GRAND MARQUIS IN STOCK

\$3000 CASH BACK

1992 TOWN CAR

6 TOWN CARS IN STOCK

\$750 CASH BACK OR 7.9% FINANCING FOR 48 MOS.

1992 SABLE

49 SABLES IN STOCK

\$500 CASH BACK OR 7.9% FINANCING FOR 48 MOS.

1992 TOPAZ

35 TOPAZ IN STOCK

\$200 CASH BACK OR 7.9% FINANCING FOR 48 MOS.

1993 TRACER

66 TRACERS IN STOCK

\$1500 CASH BACK OR 7.9% FINANCING FOR 48 MOS.

1992 COUGAR

43 COUGARS IN STOCK

STU EVANS

Demo Clearance Sale

40 Demos To Choose From

Continental 6 Sable
Town Car 5 Topaz
Grand Marquis 7 Cougar

McDONALD FORD ANNOUNCES FINAL MARKDOWNS ON ALL 1992 CARS, TRUCKS & VANS

FREE FULL TANK OF GAS With every new car purchase

FREE BEDLINER With the purchase of any new Series Pickup. Expires 9-4-92

YOU GET:

- Thousands of dollars in savings on every new 1992 vehicle. Every car, truck & van is marked with our lowest sale price.
- High trade-in allowances. We need 100 clean used vehicles now!!
- LOW, LOW interest rates. Some models as low as 4.8% annual percentage rate.

SAVE EVEN MORE ON THESE DEMOS AND LIKE NEW 1992's

1992 TEMPO V-6, auto, air, GL, 4 dr \$10,599	1992 Taurus Loaded, 4 dr \$13,799	1992 PROBE Auto, sunroof, & more \$12,499	1992 CROWN VICTORIA LX V-8, leather, loaded \$15,999	1992 F-150 Farelside, V-8, air, auto \$14,999	1992 Taurus LX 4 dr \$15,999	1992 F-150 SPORT PICKUP \$12,999
--	-----------------------------------	---	--	---	------------------------------	----------------------------------

AWARD WINNING SERVICE DEPT. Now open til 9 pm Mondays for your convenience

COME IN EARLY FOR BEST SELECTION!!

*Plus tax, title, license & destination. **Plus tax, license, title. Picture may not represent actual vehicle for sale.

McDONALD FORD 349-1400

550 W. Seven Mile NORTHVILLE

Between Northville Rd. and Sheldon Rd.

NEED A NEW CAR? CREDIT PROBLEMS?

- ✓ REPOSSESSIONS
- ✓ BAD STUDENT LOANS
- ✓ BANKRUPTCY
- ✓ CHARGE-OFFS
- ✓ SLOW PAYS
- ✓ MEDICAL COLLECTIONS

• RE-ESTABLISH YOUR CREDIT
• ALL LOANS REPORTED TO TRW
• LARGE INVENTORY - ALL FULLY INSPECTED
• NOT BUY HERE - PAY HERE

Major lender has \$5 million available for a test program only at Champion Chevrolet

SEE SALESPERSON FOR DETAILS!
SPECIAL FINANCING DEPARTMENT

229-8077



Brighton Chrysler

• PLYMOUTH • DODGE • JEEP • EAGLE

9827 E. Grand River • Brighton

(313)229-4100 (313) 229-4100

'90 JEEP CHEROKEE LIMITED

Red & gold, fully loaded with leather interior

\$16,995

'87 LINCOLN MARK VII LSC

Fully loaded with leather and power moon roof

\$6,995

'91 GEO STORM

Auto, air, GSI model, only 8,000 miles, flash red

\$9,995

'92 DODGE DAKOTA

White with grey interior, only 7,000 miles

\$8,495

'92 DODGE SPIRIT

V-6, power windows, power locks, tilt, cruise, low miles only

\$10,995

'91 CHEVY S-10 Charcoal grey 5 speed very clean, great gas mileage	'91 RAM 150 LE 4X4 PICKUP Fully loaded, electric blue, immaculate condition, low miles	'88 DODGE CARAVAN LE Fully loaded, V-6, black with wood grain
'91 DODGE SHADOW ES Fully loaded, 5 speed with turbo, low miles	'90 MITSUBISHI ECLIPSE GS Black 5 speed, fully loaded, must see! Very sporty	'90 FORD TEMPO Auto, air, power windows, power locks, tilt & cruise, very low miles
'85 FORD MUSTANG GT Flash red, fully loaded, automatic, only 36,000 miles, high performance built 302	'91 FORD T-BIRD Flash red, fully loaded, low miles	'91 DODGE SHADOW CONVERTIBLES Very sporty, low miles, 2 to choose from
'99 DODGE SHADOW ES Too many options to list! Very rare car, yellow 2 door	'90 DODGE SPIRIT ES Fully loaded, turbo, silver with sport wheels, very sharp sedan	'88 DODGE DAKOTA SPORT 2 wheel drive, 5 speed, V-6, black with 45,000 miles
'91 CHRYSLER LE BARN CONVERTIBLE GTC Fully loaded with leather, charcoal grey, automatic, won't last long	'90 DODGE CARAVAN LE Fully loaded, V-6, brown with wood grain	'86 CHEVY MONTE CARLO 4.3 V-6 engine, automatic, air & more! Only 36,000 miles black cherry, immaculate car.

'89 NISSAN PICKUP
Auto, air, fiberglass cap, low miles, immaculate condition

'89 CHEVY LE BARN
Fully loaded, V-6, brown with wood grain

'86 CHEVY MONTE CARLO
4.3 V-6 engine, automatic, air & more! Only 36,000 miles black cherry, immaculate car.

240 Automobiles Over \$1,000

1976 FORD LTD. 1981 Cutlass Supreme. Both run but need work \$600 or best offer for both. (313)486-9195.

1978 BUICK LeSabre, light blue, fair condition. \$600. (517)223-7826.

1978 CHEVROLET Z-28 Camaro. \$800 or best. (313)624-2091.

1978 COUGAR. Runs great, needs battery, \$1,000, best offer. (517)223-0166.

1978 PLYMOUTH Volare, 48,000 miles, \$750 firm. 1982 Dodge Rabbit for parts, \$125. 1970 AMC Hornet, \$85. 1975 Saab parts. (313)632-7078.

1979 CADILLAC Sedan Deville, exc. transportation, 425 engine, \$875 best. (517)223-3559.

1979 FORD Fairmont, good shape. \$900/best. (517)546-5560.

1980 AMC Concord. Good cond., \$500. (313)437-2157.

1980 FIESTA Nice shape, red. \$600 (313)420-4413

1980 MERCURY Capri. 4 cylinder, air, locks and runs great. \$575. (517)546-9389.

1981 CAPRICE. 350 Olds engine & trans. Runs good. \$700/best. (313)229-2382 after 4:30pm.

1981 CHEVY Malibu Classic. 4 dr., many new parts, dependable, must see. First reasonable offer takes. (313)878-6257 evenings.

1981 PONTIAC Grand Prix for parts, \$125. (313)437-2157.

1981 TOYOTA Corolla. Make offer. Evenings. (313)229-7335.

1981 VOLKSWAGON Rabbit. Stock, 5 speed. Good condition. \$650. (313)227-0238.

1982 BUICK Century Limited. Body, interior, good shape. Needs engine work. \$350/best. (517)546-4632.

1982 BUICK. 9995 and 1985 Escort, \$750. (313)349-0698.

1982 ESCORT. 61,000 miles, runs great, needs body work \$450. (313)348-3959, Dennis.

1983 CHEVROLET Citation. \$399. (313)229-7791.

1983 MERCURY station wagon. Best offer. Clean. (517)546-4065

1983 OLDS Cutlass Corsica, needs trans work. \$500/best. 1978 Olds Cutlass Salon, good transportation. \$500/best. (517)548-9688.

1983 PLYMOUTH Reliant station wagon, runs, \$400 or best offer. (313)632-5967.

1984 CHEVETTE. runs great, \$250/best. (313)227-8987.

1984 ESCORT 2 dr., \$200 or best. (313)348-8168.

1984 PONTIAC T-1000. \$100 or best offer. (313)229-0040.

1985 ESCORT GL 4 door wagon. Car top carrier, wood trim. \$1000 (517)546-4678.

MAIL Jeeps: 1982, \$650. 1974, \$650. (517)546-3280.

BUY IT. FIND IT. SELL IT. TRADE IT.

241 Automobiles Under \$1,000

1969 FORD wagon. 390, runs great, body good, needs brake work. \$300. (517)548-2702.

SPARTAN TOYOTA CAMRY 1 PRICE SALE

BRAND NEW 1992 TOYOTA CAMRY'S



3% OVER DEALER INVOICE*

ALL MODELS LE, DX, XLE, SE AND STATION WAGONS

WE'LL BEAT ANY DEAL FROM ANY DEALER OR WE'LL PAY YOU **\$100 CASH ON THE SPOT!****

"Michigan's Largest Toyota Dealer"

SPARTAN TOYOTA

5701 S. Pennsylvania Lansing
394-6000

Hours Mon.-Thu. 9-9; Tue., Wed., Fri. 9-6; Sat. 9:30-4

Livingston County
Call 1(800)333-TOYO

50 CREDIT	100 PREPAY
JULY HD	SPARTAN TOYOTA
MILLER HD	N
WELJERS	1

*Dealer invoice may not reflect actual dealer cost due to factory to dealer incentives, it might be slightly higher or lower.
**Must have Dealer/buyer order signed by Management prior to delivery.

Sizzling SUMMER CLEARANCE SALE ENDS SEPTEMBER 5TH

REBATES UP TO \$6000

FINANCING AS LOW AS 2.9% A.P.R.

'92 F-150 Pickup 4x2
117 inch wheel base, 5 speed, 4.9L EFI, custom trim, preferred equipment, pkg. 498A, bright regatta blue. Stk #2-1723

\$9195*

'92 Mustang LX 5.0
2 door, oxford white, preferred equipment pkg. 245A, cruise, AM/FM cassette, graphic EQ, V-6, 5 speed, rear defroster, air. Stk #2-1295

\$13,295*

'92 Capri Convertible
2 door, preferred pkg. 651A, cardinal red, black roof, cruise air, AM/FM cassette, aluminum wheels. 5 speed, Stk#2-1667.

\$12,595*

'92 Cougar LS
Preferred equipment pkg. 2600, tilt, cruise, rear window defroster, AM/FM stereo cassette, aluminum wheels, power locks, 3.0L V6 engine, automatic O.D, electric red. Stk #2-1713

\$14,495*

'92 E-150 Conversion Van
136 inch wheel base, preferred equipment pkg. 743A, 5.0L EFI V8 engine, automatic, O.D, dark charcoal color, trailer towing pkg. Stk. #2-1142.

\$17,995*

'92 Explorer 4x4
4WD, 2 door, twilight blue, preferred equipment pkg. 901A, sport trim, air, 4.0L EFI V6, automatic O.D, cruise, tilt, AM/FM cassette, all terrain, performance side. Stk #2-0629.

\$17,695*

'92 Probe GL
2 door, hatchback, oxford white, preferred equipment pkg. 251A, rear window defroster, tilt, heated glass, cruise, air, power locks, 5 speed. Stk #2-0778

\$11,495*

'92 Ranger S 4x2
Oxford white, custom trim, 5 speed manual O.D, P195 all season tires. Stk #2-1563.

\$7895*

'93 Mercury Villager
Auto, 3.0L engine, cloth bench seats, air, electric rear window defrost, dual power mirrors, power mirrors, power locks & windows, tilt cruise.

\$16,995*

PROGRAMS EVERYONE

- A-Z Plan Headquarters
- First Time Buyer Program
- College Graduate Program
- Owner Loyalty Program
- Motor Mobility Program
- Econ. Commercial Rebate
- Short-term Lease Program
- E-Z Financing


BRIGHTON

FORD MERCURY

HIGHLAND'S ENTIRE 1992 INVENTORY

PRICED \$100⁰⁰ BELOW DEALER INVOICE


1992 DODGE CARAVAN



2.5 liter, automatic, am/fm stereo, 5 passenger, much much more!
Stock #2358
DEALER INVOICE \$13,574.13
SUBTRACT \$100 YOU PAY

\$13,474.13

1992 DODGE DAKOTA



2.5 liter engine, 5 speed, radial tires, am/fm stereo, much, much more
Stock #2279
DEALER INVOICE \$9350
SUBTRACT \$100 YOU PAY

\$9250.20

1992 DODGE SHADOW



2.2 liter, 5 speed, rear defrost am/fm stereo, much more
Stock #2266
DEALER INVOICE \$8,493.65
SUBTRACT \$100 YOU PAY

\$8,494.65

UNBEATABLE DEALS ON USED VEHICLES

'79 CHEVY MALIBU, #F0075B	\$99
'79 AMC SPIRIT, #F0059A	\$349
'87 PLYMOUTH HORIZON, "Commuter Car", #F0056B	'99 Down \$99 Mo. x 36 Mos.
'87 DODGE SHADOW TURBO, Sporty, #2321-A	\$2,995
'88 DODGE DYNASTY, Full Size Luxury, #F044A	'99 Down, \$149 Mo. x 48 Mos.
'88 PONTIAC GRAND AM, Auto, Air, Loaded, #P2700	'99 Down, \$179 Mo. x 48 Mos.
'89 CHEVY S-10, 29,000 Miles, #P2708	'99 Down, \$159 Mo. x 54 Mos.
'88 CHEVY BERETTA GT, V-6, Loaded, #P2695	'99 Down, \$179 Mo. x 48 Mos.
'85 FORD LTD CROWN VICTORIA, "Like New", #P2709	\$4,995
'88 CHRYSLER NEW YORKER, Landau "Mark Cross", #F0068A	\$7,995

OPEN
Mon. & Thurs. 9am-9pm
Tues. Wed., Fri. 9am-6pm
Now Open Saturdays 10am-3pm

Ed Sauer's

HIGHLAND

2565 Highland Rd., Highland

887-3222

1-800-233-6324

"Easy to Find"



M-59 & Duck Lk. Road

Dodge Dodge Truths

*All vehicles subject to pre-sale APRs: 87-16%, 88-14%, 89-12%, 90-10%, 91-9% on approved credit. Invoice is not a net factory cost price to the dealer.