

50¢

THURSDAY
MAY 30, 1996

Volume 40
Number 35
Five Sections
54 Pages plus Supplements

NEWS

Opinions OUR CHOICES IN
COMING ELECTIONS / 18A

Living WE NAME THIS YEAR'S
ACADEMIC ALL-STARS / 1B

Sports NOVI RUNNERS PLACE
SECOND IN CONFERENCE / 9B

City hashes over details of Sinai site

By WENDY PIERMAN MITZEL
Staff Writer

Parking garages, more stories, build higher, not out.

These are some of the things the City of Novi Planning Commission suggested as remedies for the proposed Sinai Park, a three-phase medical development at the corner of Twelve Mile and Meadbrook roads.

"We have more footprint than I anticipated for 40 acres," said Commissioner Peter Hoadley. "My intuition tells me this site should be decreased dramatically."

The commission unanimously voted down the preliminary site plan proposal on May 15, saying

the site was overbuilt. Kim Thomas Capello and Arthur Vretnas were absent from the regular meeting.

Phase one of the development would include a 60,000-square-foot diagnostic and treatment facility and a 40,000-square-foot physician office building. Phase two will add another 100,000-square-foot of office and diagnostic space. Phase three is a "short stay" 300-bed hospital facility for 24 to 72-hour stays.

The planning department and Sinai Hospital have said the site is perfect considering the new M-5 Haggerty Connector just down

Continued on 15

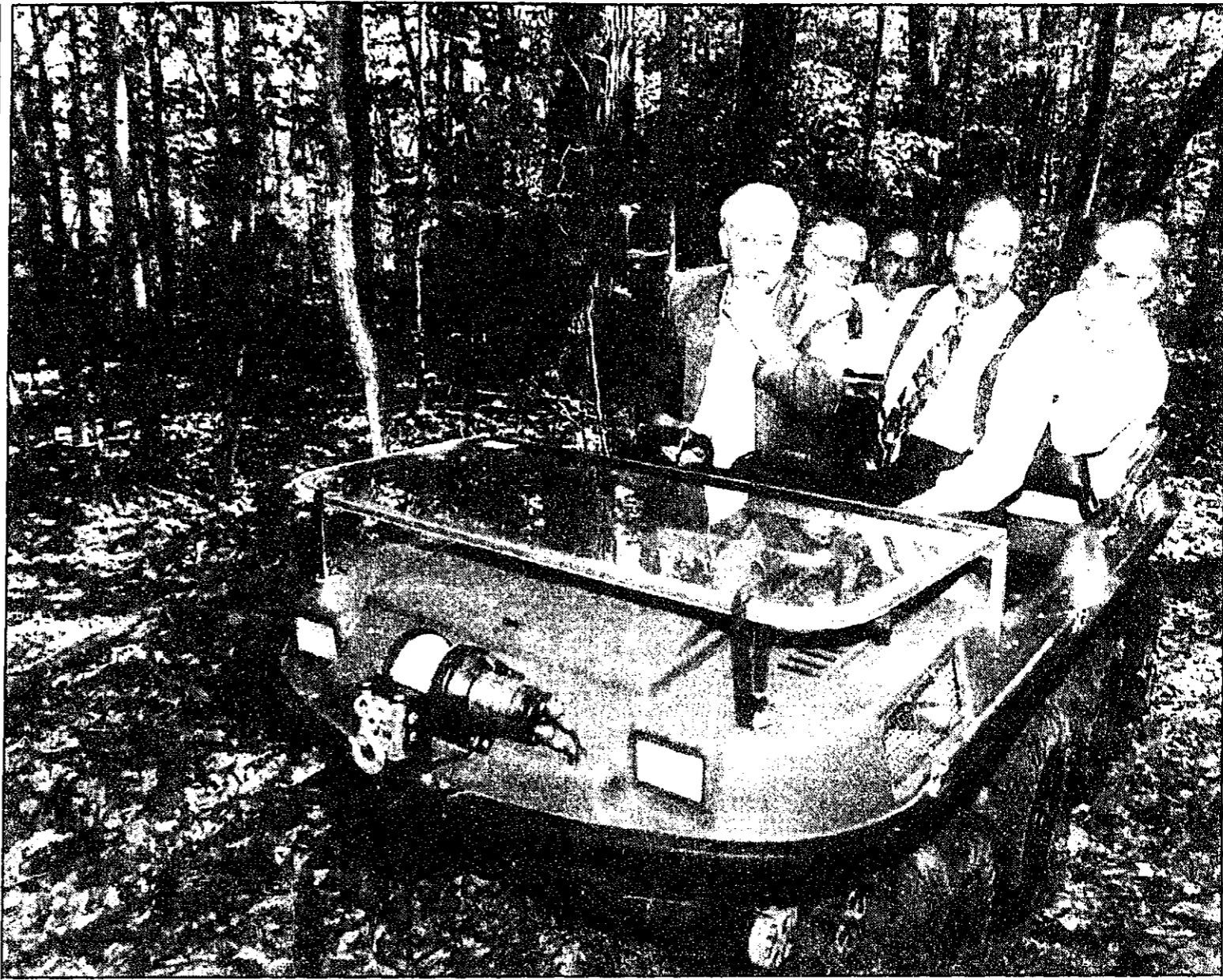


Photo by BRYAN MITCHELL

Joe Kapelczak, president of JCK, drove Detroit Mayor Dennis Archer through the Novi Tree Farm park off Twelve-and-a-Half Mile Road with an eight wheel ATV on part of Archer's tour of the city. Also along for the ride was Novi mayor pro-tem Hugh Crawford, councilman Robert Schmid and city forester Chris Pargoff.

Trading places

Novi's McLallen, Detroit's Archer exchange for a day

By WENDY PIERMAN MITZEL
Staff Writer

Novi and Detroit are more alike than most people would think, according to the mayor's from both cities.

And each city can learn from the other by examining those similarities as well as the differences.

"You guys are having a lot of success in economic development and that's what we plan to focus on this year," said McLallen during a discussion with Deputy Mayor Nettie Seabrooks.

"We'll trade housing for an empowerment

zone," McLallen chuckled.

McLallen said Novi is now moving into being more of an established community and that means reexamining the way the city does business.

"Novi can't be the shining new kid on the block forever," she explained. "Part of the maturing process is some established patterns have to change."

Seabrooks and McLallen agreed the two cities can work together for each other's benefit. Unlike many other big cities in the country, the city depends on the suburbs within the region for support.

"It's a fact that Detroit can be a drag on the region and the state," said Seabrooks. "But if Detroit flourishes that means the whole state can do better."

Richard Blouse, president of the Greater Detroit Chamber of Commerce said the business chambers in Southeastern Michigan have to come together and work closely and competitively.

"Detroit isn't a separate entity, he said. "The city needs your help. The city's rebirth has to come from people coming into the city to live and work and play." Blouse emphatically.

Continued on 17

Special Pull-Out Section

Novi Middle School students have labored over the past few months to produce a mini-newspaper through a Partnership in Education program with The Novi News. Their efforts are published in this week's edition as a special pull-out section beginning on page A9. Middle School students, working with their instructors, wrote news, sports, features and editorials, and prepared the ads for the mini-newspaper. Students also did the layout, through pagination programs on the Middle School's computers. Reprints of the section will be available at no cost at the offices of The Novi News at 104 W. Main Street in Northville and Novi Middle School while supplies last.



5-30-96

Meyer Farm may be site of Novi sports complex

By JAN JEFFRES
Staff Writer

For years, people have been picking strawberries in the spring and pumpkins in the fall at the Meyer Berry Farm.

In the future, they may take a plunge off a high dive or volley a tennis ball on the site.

At least one Eight Mile Road resident isn't convinced that turning the 40 acres on the north side of Eight Mile Road into a private sports club/public recreational complex will be the berries.

Others question the direction in which Novi's entire Eight Mile Road corridor, once destined for large-lot residential, may be headed.

Wednesday (past deadline), the Novi Planning Commission was scheduled to discuss a new recreational district zoning classification, which would need to be in place before The Sports Club of West Bloomfield, a private development, and the city's own ice arena could be built on the residentially-zoned land.

At this point, everything's still in the concept stage, said Glenn Healey, who holds the controlling interest in the West Bloomfield club.

"I'm not saying we're not very interested in pursuing a project in Novi," Healey said.

"The city is obviously interested in providing recreational opportu-

Continued on 16

Novi man dies in crash

By ROBERT JACKSON
Staff Writer

Alcohol may have been the cause of an early morning Memorial Day car crash that took the life of a 22-year-old Novi man, and injured two others, according to Farmington Police.

David Ward Clemens, a 1992 graduate of Novi High School, was pronounced dead at the scene of the one-car crash that happened at 2:20 a.m., May 27, on Halstead Road, south of Grand River, in Farmington.

Clemens was one of five people driving in a 1995 Chevy Lumina when the accident occurred, according to Farmington Police Deputy Director Mike Wiggins. The driver, whose name was withheld by police, and another passenger were also injured in the crash, and were transported to Botsford Hospital. Their injuries and conditions are not known.

The two remaining passengers walked away from the accident with no injuries.

It is believed that the driver of

the vehicle was a good friend of Clemens and also graduated from Novi High School.

According to Wiggins, the Lumina was driving westbound on Freedom Road at a high rate of speed and when the car reached the curved intersection of Freedom and Halstead, the vehicle proceeded through the stop sign and lost control when the tires traveled onto the road's shoulder.

"At that point in time the vehicle crashed into an Edison pole



Continued on 16 David Clemens

inside

- BUSINESS..... 1D
- CALENDAR..... 2A
- CLASSIFIEDS..... 3D
- DIVERSIONS..... 6B
- EDITORIALS..... 18A
- HEALTH..... 11B
- LETTERS..... 19A
- LIVING..... 1B
- NOVI BRIEFS..... 4A
- NOVI HIGHLIGHTS..... 2B
- OBITUARIES..... 8A
- POLICE NEWS..... 4A
- SPORTS..... 9B

NEWS/SPORTS..... 349-1700
ADVERTISING..... 349-1700
FAX..... 349-1050
CLASSIFIEDS..... 348-3024
HOME DELIVERY... 349-3627

In today's issue



A special section...

1996 CAVALCADE OF HOMES

Remember with honor

The community turned out in force Monday to honor the men and women who have died serving the country. The ceremonies began the Memorial Day ceremony at Oakland Hills Cemetery on Twelve Mile Road. Then the parade traveled down Novi Road, making a special stop at the Novi Cemetery, the resting place of veterans from the Civil War on. The parade finished off at the Civic Center on Ten Mile Road. All four of Novi's veterans groups were there to honor their fellow men and women. At right, The Honor Guard leads off the parade.

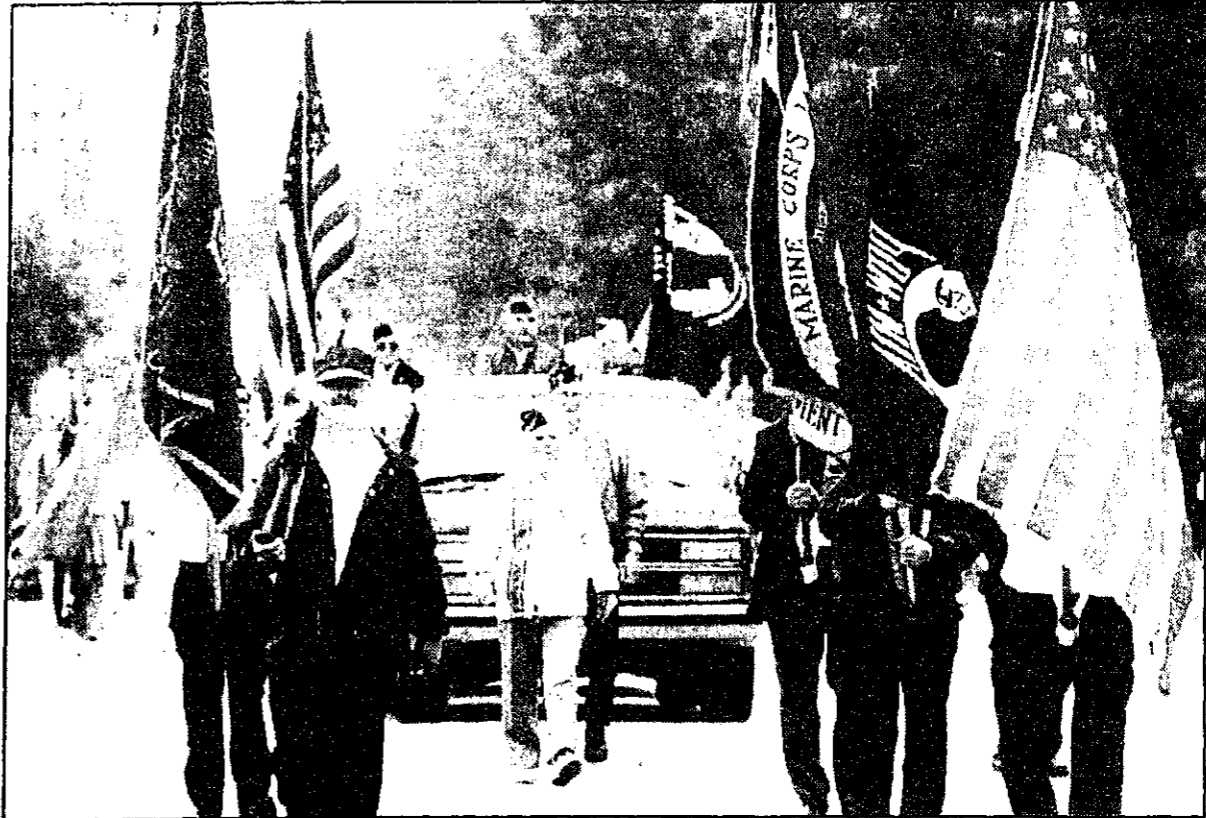


Photo by AL WARD

Bus bully takes ten bucks from teen

A 14-year-old Novi boy riding the bus home from school May 1 was approached by another boy in transit who demanded his money, according to police.

The boy said he didn't have any and the other teen threatened to beat him up. The victim said he would give him a dollar but when he reached in his wallet a ten dollar bill fell out, which he tried to cover up while the bully demanded it be turned over.

The teen found himself in a headlock while the bully grabbed the ten dollar bill and threw the one dollar bill back at him.

Police said the school took action against the teen but officers have found it difficult to reach the bully's parents.

HOME ROBBED

Unknown suspects broke into a home on Montmorency May 21 taking away a diamond ring, a VCR, laser disc player, stereo, CD player and television, according to police.

The lock on the west side door was pried open and the break-in was found by the owner's son who had stopped by the house while the owner was out of town.

Neighbors saw nothing but told police they heard loud "bangs" about 4 to 5 p.m. in the afternoon.

Police News

FURNACE FILCHERS

Two homes under construction in the Vistas of Novi were victims of a furnace robber May 16.

Police said unknown suspects entered one unfinished home and removed the furnace which was fully installed and running. Suspects removed the ductwork, gas line and electrical power line before carrying the furnace upstairs and out the garage.

In the house across the street on Heathstone, police said suspects broke into a locked house and took a furnace which wasn't fully hooked up.

THE IRONY

A man, who witnesses watched steal two items of clothing at JCVenue in the Twelve Oaks Mall and tried to return them for cash, was hit by a car in the parking lot as he fled from security guards on foot, according to police.

The man was denied the cash return and left the tag in an aisle and began running. He headed out the door into the parking lot where a GMC Jimmy struck him, causing serious injury.

Mercy opens second facility in Novi

Mercy Network will open its second facility in Novi on Wednesday, June 12 from 3:30-6:30 p.m. Mercy Network is a new program funded by Oakland County Community Mental Health with services provided by St. Joseph Mercy Oakland. This \$2.3 million contract is among four county-funded programs to provide community based mental health services for adults with serious and persistent mental illness.

The Mercy Network program serves two geographic areas and maintains two offices. Mercy Network-Central is located in Pontiac and serves Pontiac, Waterford and community based mental health services. They include assertive treatment for individuals with severe mental illness, transitional services for persons recently discharged from the hospital, follow up support, partnership arrangements for those with private psychiatrists, case management, medication management, vocational assessment and counseling; outpatient therapy and substance abuse counseling.

The Mercy Network program serves two geographic areas and maintains two offices. Mercy Network-Central is located in Pontiac and serves Pontiac, Waterford and

Auburn Hills, Mercy Network-West is located in the Holy Hill Professional Village, 39575 W. Ten Mile

Road in Novi. It serves 17 communities in Southwest Oakland County including Novi.

mini storage advertisement with pricing for various storage units and services. Includes contact information: 471-7900, 39670 Grand River Ave., (1/2 Bk. W. of Haggerty).

COMPUTERIZE INC. IBM COMPATIBLE COMPUTERS advertisement listing various computer models and prices.

Novi Briefs

Correction

Anyone interested in contacting Covenant, the international adoption agency in Colorado that appeared in an adoption story last week, can call 719/531-5100.

Correction

The order of Novi High School students in a woodworking award's photo in last week's edition of The Novi News should have read: Bill Dean, Chip Dayton and Ron Oppat.

Let the voters choose

State Rep. Willis Bullard, R-Milford said Tuesday he is not endorsing any candidates who are seeking his state house seat, should he be elected to the state senate on June 4. Bullard was endorsed by outgoing senator David Houghton in his bid for that senate seat in the special election campaign to wrap up next Tuesday.

Temporary use permit

American Construction Inc. is requesting a temporary use permit to allow placement of a construction trailer in Orchard Hill Place Condominiums beginning June 1. A temporary use permit may be granted for a period of not longer than six months.

A public hearing can be requested by any property owner of a structure located within 300 feet of the boundary of the property being considered for temporary use permit.

The request will be considered at 3 p.m. on Wednesday, June 5 at the Novi Civic Center. All written comments should be directed to the City of Novi building official and must be received prior to June 5.

Free ongoing well care

Oakland County Health Division's Child Health Conference provide free ongoing well care for children from birth to school entry. Families who do not have an HMO or Medicaid may be eligible. Clinics are held at 14 locations throughout Oakland County.

Appointment is required. For more information, call the south Oakland office at 424-7066 or 424-7067.

Citizens with information about the above incidents are urged to call the Novi Police Department at 348-7100.

MALICIOUS MISCHIEF

The man is described as having black hair with a black and white mustache and beard. He was wearing a dark blue shirt and blue jeans.

McFee named manager of Novi's Twelve Oaks Mall



Library Notes

What do you think?

During the coming weeks, Novi residents may be contacted by Wayne State University's Survey and Evaluation Services Department. The Novi Public Library Board has contracted with Wayne State for a community survey, which will involve contacting over 400 residents by telephone and learning of their preferences for library services. Responses from this community survey will become the basis for the library's long range plan. If you are contacted by telephone, you will be asked to respond to a questionnaire, which may take approximately 15 minutes.

Book Talk

The Novi Library adult book discussion group will meet on June 3 at 7 p.m. in the meeting room of the library. The topic for discussion will be 'The Bean Trees' by Barbara Kingsolver. Have this book read and be prepared to discuss it with the group.

J. Miles McFee has been appointed general manager of Twelve Oaks Mall.

McFee will oversee day-to-day retail operations, working closely with the center's marketing director, its tenants and the greater community.

"I've worked in the Detroit retail scene eight years, so I'm well versed in the dynamics of the entire metropolitan area," said McFee, who has been general manager at both Fairlane Town Center in Dearborn and Lakeside in Sterling Heights. "Twelve Oaks Mall is a rapidly expanding market, and I look forward to contributing that momentum by becoming extremely positive in meeting our customers' needs."

McFee brings a strong retail management and operations background to his new job. He has been with The Taubman Co., which owns and manages Twelve Oaks Mall, for more than 13 years.

State liberal with college appropriations

By TIM RICHARD Staff Writer

Liberated with money, conservative on social policy.

That sums up the way the Michigan Legislature this year treated 15 state universities in a \$1.5 billion appropriations bill that's 5 percent higher than a year ago in a time when inflation is below 3 percent.

"It's about as good as you can do - the best in 10 years," said Sen. John Schwarz, R-Battle Creek, chair of the Senate Appropriations subcommittee on higher education.

"It brings some floors up," he added, referring to a 12 percent boost for 13 Dearborn and nearly 15 percent for Grand Valley and Saginaw Valley universities. They were brought up to a floor of \$4.150 per student.

The Senate May 22 voted 33-3 to create its own conservative House amendments to Senate Bill 850 and sent it to the governor's desk for signing. The amendments:

A deduction for the University of Michigan and Wayne State University to the extent they provide benefits for unmarried domestic partners.

The House failed May 21 to strip out that amendment by a 25-72 vote. Voting to knock it out were Democrats Maxine Bauman of Southfield and Kirk Proff of Ypsilanti, and Republicans Barbara Dobb of Union Lake and Jan Dolan of Farmington Hills.

A prohibition against funding abortions as a health benefit, and an order to university boards to negotiate an end to abortion funding in future union contracts.

That amendment, sponsored by Rep. David Joyce, R-Utica, was tacked on by a bare 56-44 vote with 10 members absent.

Willis Bullard, R-Milford, voted yes.

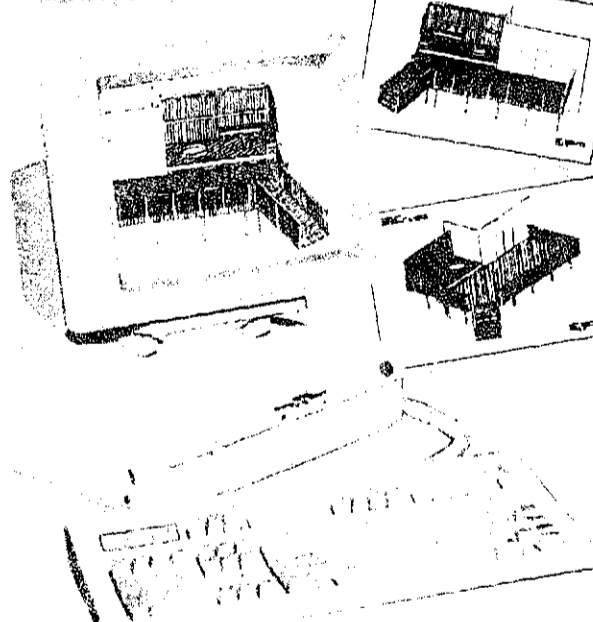
Sen. Don Koistio, D-Ironwood, praised the monetary increase because "the more we put into higher education, the less tuition students have to pay. We put a dent into the upward spiral of tuition."

Sen. Alma Wheeler Smith, D-Salem, whose district includes U-M and Eastern Michigan University, agreed on the money part but deplored the amendments. "I think it's unconstitutional," she said, referring to a provision of the Michigan Constitution that gives U-M, Michigan State and Wayne State operating autonomy. "Universities will have to expend tax dollars to go to court."

Sen. Gary Peters, D-Bloomfield Township, joined Smith in voting no.

The budget bill includes \$1.495 billion in state money and \$5 million in federal financial aid - a 2 percent cut in Washington's contribution.

DECKING Detroit's One-Stop Store!



DECK LUMBER! The best quality. We are your one-stop store for all your decking needs. Our decking lumber is treated with a preservative (40CCA) to prevent rotting and insect damage. Plus, over 30 traditional and contemporary decking accessories.

WHERE TO GO! 7 Convenient locations. Over 30,000 Home Improvement items available in each store to make your project a complete success. Stop in today at one of our conveniently located HQ stores.

FREE DECK DESIGN! State-of-the-art computers. Come in today and we will help you design your dream deck. Simply bring in measurements of the space where you'd like to build your new deck, and we'll come up with several design options on the computer that meet your needs and preferences. Then we'll give you a print-out of your new deck design along with building instructions and a complete materials list and cost estimate.

HOW-TO CLINICS! The best advice is FREE! Check our lumber desk for a schedule.

DECK INSTALLATION! We can build it for you! Save time by having one of our professional deck builders install your deck for you. See store for details.

Apply Now for a Home Quarters Credit Card & When You're Approved, and You Will Receive 10% Off Your First Home Quarters Credit Card Purchase! See our service desk for more information. This one-time offer good for new Home Quarters credit card accounts only. Offer cannot be combined with any other offer or discount.

WE HAVE THE BEST TRACTOR...



...AND WE CAN PROVE IT!

Stop In And See For Yourself! No Other Tractor Stands Up To The Test.

- 7 Year Warranty!!
\$100 Savings Bonds!
No Payments No Interest*
No Money Down for 6 Months!

Enter Today To Win A New Ford F150 & A Troy-Bilt 11HP Tiller!

OTROY-BILT advertisement listing various locations and contact information.

SCHOOLCRAFT COLLEGE HAGGERTY ROAD & 6 MILE AT I-275. 11 BIG DAYS MAY 30 THRU JUNE 9.

LIVONIA FREE FAIR. FREE - FREE - FREE - FREE - FREE. PARKING • ADMISSION • EXCITING CIRCUS ACTS. GIGANTIC FIREWORKS DISPLAY-SUNDAY JUNE 9TH. THRILLING CARNIVAL RIDES!

PAY-ONE-PRICE EVERY DAY!! UNLIMITED RIDES \$15.00 Per Person. OPEN: Mon - Fri at 3 PM Sat & Sun At Noon.

Quality sofas at great low prices! CLASSIC TRADITIONAL \$499.98. COUNTRY WARMTH \$569.98. HIGH BACK COMFORT \$599.98.

Sports

the NOVI MIDDLE SCHOOL NEWS
12A
THURSDAY
May 30,
1996

Summer sports camps can keep kids busy

By Nick Kowalczyk & Mat Hopson
Most people are looking for a little more excitement than sitting out in the woods with wet matches and a sopping wet tent. So, research was done throughout Novi Middle School to find the best of the best in sport camps.

Most of the camps are run in June or July and are normally in high schools or college campuses. Most sports are available, including the "hard to find" camps for sports such as lacrosse, football, and swimming. The more common sports are baseball, basketball, soccer, tennis, and golf.

Occasionally campers go daily and arrive home from 5:00 to 9:00. But some campers stay overnight and room in dorms.

According to one camper, Jenny Davies, "It was clean, but I made my room messy." For most campers, the fun never stops. "I had lots of fun, and we'd work on our basketball skills for about four days, six hours a day," said Ken Gee.

Basketball is one of the most popular sports in the country, and there are many camps to attend in the Novi area. Once again, Orchard Lake St. Mary's is attended by many 7th and 8th graders in NMS. St. Mary's is not only one of the premier camps but offers a variety of sports.

Swimming camps are normally done for only a few days. At elementary school you go to the high school for about a week. "It was pretty weird," said Steve Horne.

Past and present

Times have changed in the field of sports, athletes

By Dan Kittle, Scott Minke and Mike Kossik

It is by far one of the most debated topics in all of sports. Who's better, the past or the present? Who would have won in a duel between Greg Maddux and Babe Ruth, or in a one-on-one showdown between Michael Jordan and Dr. J?

Mr. Hartman is coaching 8th grade football and track and

"Kids just don't play as much sports as they used to."

Mr. Cicchelli, NMS teacher helping out with the Varsity football team. He has been teaching in Novi for 17 years and coaching for 18.

Mr. Raburn also felt the same way, that kids now a days don't play as much of sports as they used to. Mr. Raburn has coached football and basketball for twenty years and taught for 21. He is the current 8th grade basketball coach.

Mr. Cemate, on the other hand, believes that kids are better at sports than they once were. "When I was growing up, there were only two or three sports offered to us. Also, we didn't have any training equipment. Today, with so many sports and activities offered and much better equipment, athletes are in much better shape than they used to be."



The Eighth grade girls' basketball team had an excellent season winning all ten of their games.

Cagers catch perfect season

By Allison Tingwall and Ryan Fedorick
Some people are sore losers, but this team didn't need to worry about losing. The eighth grade 1995-96, girls' basketball team, coached by Ms. Tomaneck, went 10-0 last fall. Not only did they go unbeaten this year, but last year the girls won all their games too.

Every team needs practice. No team is perfect and there is always something to work on. My strategy is to teach each girl the basics of basketball and to have every girl or perfect these basics to the best of her ability.

The group consisted of: Sarah Bajorek, Kelly Bendernagel, Andrea Bullen, Sarah Clark, Sarah Corless, Lindsay Doyle, Joelle Frantz, Angie Herbst, Julie Kramer, Colleen Lewis, Kristen Mc Glimmen, Natalie Ozog, Christina Parrish, Stephanie Primore, Erin Quinn, Beth Rice, Jaime Schelenburger and Christina Terrell.

NMS has a sport for everyone

By Jeff Gdowski and Chris Schleuder

One of the reasons why Novi Middle School students find that there is a lot of sports in store for them. So check out these sports.

body can run with the team. These people should like to run. The coach for cross country is Mr. Center. "It got me in shape, I like to run, and Mr. Center is a good coach," says seventh grader, Nicole Schilling.

Another hard hitting game is lacrosse, which is available for 7th and 8th grade boys. Anybody can play, but you have to bring your own lacrosse equipment.

Track & field is open to all middle school students. Anybody can compete, boys or girls, 7th or 8th grade. The coaches for the team are Mr. Seiler, Mr. Hartman, Mr. Hoffman and Mr. Center. Most of the events are running events and there are also some field events.

Down the hall in the cafeteria, the wrestlers are on the mats. Wrestling is for 7th and 8th grade boys.

Track team hits the pavement

By Frank Raburn, Ryan Rzepka and Ryan Rose
The Novi Middle School Track team opened their season on April 22, against Malby Middle School. Both the boys' and girls' teams came out on top crushing Brighton by nearly doubling Malby's score.

Another coach Mr. Hoffman said, "Despite the lousy weather conditions this spring, the team has performed well."

Track offers events for long distance runners, sprinters, hurdlers, and field event people. Leading or driving the distance runners is Mr. Center, in his big blue Dodge Caravan, called "ART".



A Day for Remembrance

Clockwise from top left, Commandant Dave Owen of the marine corps makes the introductions during the final Memorial Day Ceremony at the Novi Civic Center. Flanked by his family, 6-year-old Kevin Michalczuk of Novi waves hollers his appreciation while watching the parade from in front of the United Methodist Church. The Novi Fire Department draws up the end of the parade. Junior Janet Kleban, of the Novi High School Marching Band, plays a duet of Taps after a 21 Gun Salute in front of the Civic Center.



Lack maintenance leads to problems in schools

By WENDY PIERMAN MITZEL Staff Writer
Lack of preventative maintenance or any maintenance at all kept the squeaky wheel squeaky at Novi Schools the last couple of years, according to workers in the district.

"When I first came here three years ago the principals would ask, 'Where are we at (with a repair request)?' I said five years behind," explained Chuck Beesley, who headed up the maintenance quality team.

Beesley appeared before the Mac Board of Education at a May meeting to discuss changes within the newly empowered maintenance and custodial departments.

"There is excellent communication and cooperation with the people in the design of the building," said Beesley.

Even the new equipment at the high school needed work, according to Beesley.

Abraams, "Then you're well organized and moving forward and doing the best you can do to keep this workable, is that correct?"

THE LOCATOR
Do you ever lose things, and are never able to find them again? I know that I have. But not to worry because I have found a solution. The Locator is simply a piece of adhesive tape. When something is lost, you simply say "Locate..." and then the name of the item you lost. Instantly the Locator will blink, and make different noises until found. It's simple and easy.

The #1 Bleacher "Just One Spray"
Never again will you ever have to worry about bleaching your white clothing. With the **INCREDIBLE WHITES SPRAY** it will make your troubles go away.

play sports
Ad designed by Philip Magcalas and Nathan Mitchell

ANTIC SPRING SALE
0% Interest & No Payment 'til Jan '97
Payment 'til Jan '97
Hurry! Offer ends 6/30/96
New Simplicity Regent
Simplicity Regent Model 1692359
\$2399.00
Suggested Retail \$2695**

-WEINGARTZ-
Michigan's Largest Lawn, Snow & Outdoor Power Equipment Dealer
Utica 46061 Van Dyke 1/2 Mile North of M-59 810-731-7240
Farmington Hills Grand River East of Haggerty 810-471-3050
HOURS: Monday & Thursday 8:30 am-8:00 pm • T-W-F 8:30 am-5:30 pm • Saturday 9:00 am-4:00 pm

FirstRate FUND
5.00% apy
An FDIC-insured account with daily access to funds \$10,000 minimum
Unlike some other accounts, FirstRate lets you get to your money, without paying a penalty. When you open a new FirstRate Fund Account with just \$10,000, you'll earn a rate that's tied to the highly competitive 91-Day T-Bill. If you already have a FirstRate Fund Account, you can earn this special rate when you make an additional deposit of \$5,000 or more with a copy of this ad. If your new balance is \$10,000 or more, we'll give you this special rate for your entire balance. Call 1-800-222-4FOA or visit us today to open a new FirstRate Fund Account. The FirstRate Fund. It's solid and liquid, too.

THE SPORTS AUTHORITY

new balance
Reebok
AVIA

GREAT FOOTWEAR VALUES

HOT ITEM! 24⁹⁸
WOMENS STADIUM COURT TENNIS SHOES
Reebok

HOT ITEM! 29⁹⁸
MENS 125 MWXO CROSSTRAINERS
AVIA

HOT ITEM! 39⁹⁸
MENS SHOX TRAINER BASKETBALL SHOES
Reebok

59⁹⁶ 59⁹⁶ 59⁹⁶ 64⁹⁶
adidas
MENS REGIMEN CROSSTRAINERS
Reebok
WOMENS SUPREME LOW CROSSTRAINERS
new balance
MENS 685 TENNIS SHOES
Reebok
WOMENS CHIMERA FITNESS SHOES

64⁹⁶ 64⁹⁶ 77⁹⁶ 79⁹⁶
new balance
MENS OR WOMENS 705 RUNNING SHOES
Reebok
MENS OR WOMENS WIRELESS LOW CROSSTRAINERS
CONS
MENS ILLUSION BASKETBALL SHOES
MENS AIR SLANT MID CROSSTRAINERS

GREAT SUMMER SHOES AT GREAT SUMMER PRICES!

14⁹⁸ 19⁹⁶ 23⁹⁶ 19⁹⁶
ROCK RIVER MENS HIMALAYA SANDALS
LEATHER
SPEEDO
MENS OR WOMENS SURF SHOES
Reebok
MENS ITALIA SANDALS
MENS SOCCER SANDALS
39⁹⁸ 59⁹⁶ 74⁹⁶ 79⁹⁶
MENS OVERSUELL HIKING BOOTS
MENS AIR MADA CAHNS HIKING BOOTS
MENS TERRAZONE MID HIKING BOOTS
MENS AIR MADA II MID HIKING BOOTS

The Sports Authority
PRICE GUARANTEE
...means just that! If you ever find a lower competitor's price, we'll match it!
Hassle Free!
Name Brand Sporting Goods at Everyday Low Prices...Guaranteed.

WATERFORD (919) 738-0220
MADISON HEIGHTS (810) 589-0133
LIVONIA (313) 522-2750
TAYLOR (313) 874-0505
CLINTON TOWNSHIP (810) 731-0400
UTICA (810) 254-8650
DEARBORN (313) 336-8626
NOW OPEN MON.-SAT. 10AM-9PM SUN. 10AM-6PM

THE SPORTS AUTHORITY

Residents question Sinai plan

By WENDY PIERMAN MITZEL Staff Writer

Novi Planning Commissioners aren't the only people wary of a new medical office and hospital facility locating on Twelve Mile Road.

Several residents urged them last month to question the need for the Sinai Park Development.

"As a Novi resident for the past nine years and a hospital laboratory professional for the past 16 years, I urge you to carefully consider the Sinai Medical Plan," said Deborah Ludke in a letter to the commission.

She said at a time when hospitals are experiencing cutbacks and when duplication of services means higher insurance and health care costs, Novi should do extensive research into the viability of such a facility.

Planners haggle over plan details

Continued from 1

According to the community impact statement provided by Sinai Hospital, the proposed development will provide the residents of Novi with comprehensive health services closer to home, will improve the accessibility of managed care plan providers. In addition, it plans to bring a women's health center to the area.

But commissioners weren't entirely sold on the idea.

"Whether or not there is community need for this facility is debatable," said Hoadley.

He said the project is "more than we bargained for."

Commissioners weren't happy with the extensive use of the property, even though developers tried to match the low-rise character of the city.

"We try to keep it quite compact," said Jim Cruikshank of Rosetti Associates Architects.

"I think we have an outstanding concept in how it fits into the

Planners haggle over plan details

buildings and parking lots, development proposed removing three acres of woodlands on the property, the only 95 trees on the site. Instead, they want to strategically plant specific woodlands, such as a small forest of oak or a group of maple.

City consultants said those were more quality trees than the low quality trees already in the property that provided a low quality animal habitat.

"I don't believe the quality of the woodlands doesn't warrant the alternatives," Linda Lenke, city environmental consultant, told the commissioners.

In addition small portions of some of the nine acres of woodlands will also have to be filled and created elsewhere on the property.

Although city consultants approved those plans, the commission was uncomfortable with those things being replaced with parking lots.

In order to build the series of

NOW in TOLEDO

Do It Yourself and Save
VINYL SIDING
50 Year Warranty
SALE \$35.95 PER SQ. FT.
Colors Available \$2.00 SQ. FT. EXTRA

SIDING WORLD
FREE Exterior Design Books
ALUMINUM SIDING
BSM-0 19-White
Deluxe Quality
\$59.95 PER SQ. FT.

ALUMINUM COIL STOCK
24"x30" White
+40 Other Colors
\$42.95 PER 10' SECTION

SEAMLESS GUTTERS
Run to any length
while you wait!
75¢ PER LINEAL FOOT

ALUMINUM SOFFIT
5VP-10 white
\$59.95 PER 10' SECTION

SOLID VINYL WINDOWS
Tilt in Easy Cleaning
From \$79.95 EA.

VINYL SOFFIT
White
SALE \$39.95 PER 10' SECTION

CLIO (11539 Saginaw Rd. 1010) 487-4750 SAGINAW (517) 774-3400
DETROIT (640 E. Eight Mile Rd. 110) 461-0920 DIXIE (313) 891-2902
PONTIAC (547 Olive Hwy. 210) 461-0920
LIVONIA (3985 Middlefield Rd. W. Exit 160) (810) 478-8984
INKSTER (3000 Middlefield Rd. Exit 109) (313) 728-0400
WYANDOTTE (1151 E. Central St. 215) (313) 284-7171
TOLEDO (1615) 535-1100

Quantities Limited - One Sq. Ft. = 100 Sq. Ft.
Mon.-Fri. 8:00-5:30 - Sat. 8:00-2:00 - Closed Sun.

MAY SPECIALS

BLUE SPRUCE
America's favorite evergreen
tree. Sizes up to 8 to 10 ft.
in stock
2 ft. Size
Only \$22.49 each
REG. \$39.95 #0625-310

ANNUALS
Come See the Selection!
Others talk, Plymouth Nursery DELIVERS!
With hundreds of varieties in our 20,000 sq. ft. greenhouse, it would be hard to find a better selection anywhere!
Come See the Quality!
\$2.00 OFF Premium Quality HANGING BASKETS
Limit one discount per customer please.

FLOWERING SHRUBS & EVERGREENS
All our hardy landscape plants in 1 gallon pots, regularly priced at \$6.99. Over 30 varieties. (Perennials excluded)
Now Only \$4.99 each

PENENNIAL HEADQUARTERS
Over 250 varieties in stock. From 3-1/2" pots to huge landscape sizes in 2 and 3 gal. pots! Come See the Selection!
THIS WEEK!
3-1/2" POTS Only \$1.69 each

TOMATO CAGES
We carry 15 varieties of tomatoes and over 40 vegetables. Come and see the selection!
3 ring x 33"
Only \$69¢ #5724-008

PLYMOUTH NURSERY
WHEN YOU BUY THE BEST WILL DO!
• Best Selection
• Best Quality
• Best Service
• Best Guarantee
• Best Value
The Biggest and the Best Since 1963!
COME AND SEE

STEPPING STONES
We carry a huge selection of decorative patio stones. Including exposed aggregate! Over 20 types available!
Now 20% off

PLYMOUTH NURSERY and GARDEN CENTER
9900 Ann Arbor Rd.
Just 10 minutes west of I-94

HOME GARDEN SHOWPLACE
453-5500
SPRING HOURS:
Mon.-Fri. 8:30-9 • Sat. 8:30-6 • Sun. 10-6
OFFERS EXPIRE 6/6/96

HOW DID WE KNOW ADULTS WOULD LIKE IT? WE TESTED IT WITH KIDS.

Introducing the Arch Deluxe.
Big, sophisticated, adult.
It's the burger with the grown up taste.

Arch Deluxe

© 1996 McDonald's Corporation

SAVE THIS SCHEDULE
exercise with fitness factory

- Aerobic Exercise Classes
- Step Classes

SUMMER CLASS SCHEDULE

11-GANTON
Rosaire Racquet Club
14577 Ford Rd. Del. Haggerty & Liley, 313-981-3080
MW 6:00 PM Low Impact June 10 L. Prevost
TU 7:00 PM Step Circuit June 11 Staff
TH 9:00 AM Step Circuit June 14 Staff
*NOTE: The above classes will move to Johnsons Dance Entertainment July 1!

12-PLYMOUTH
JoAnn's Dance Extension
(Plymouth Troop Center, 8088 General Drive, Suite 180 & 190 - Between Ann Arbor Rd. & Joy Rd.)
MW 6:00 PM Low Impact June 10 L. Prevost
TU 7:00 PM Step Circuit June 11 Staff
TH 9:00 AM Step Circuit June 14 Staff
*Baby-sitting available - \$1.50 per child - \$3.00 per family
**No class week of June 24

13-LIVONIA
Holy Cross Lutheran Church
13650 Six Mile Rd. E. of Menomart
1 day per wk\$40 2 days\$54 Unlimited\$69
MW 9:00 AM Hi/Low Impact June 10 P. Fritz
MW 6:00 PM Low Impact June 10 S. Kamouris
MW 7:30 PM Hi/Low Impact June 10 L. Pierce
MW 9:30 AM Hi/Low Impact June 10 H. Jones
SPECIAL 30 MINUTE SUMMER CLASS!
TH 9:30 AM June 11 T. Brandon
45 minutes of Fat Burner plus 45 minutes Body Sculpting
*Baby-sitting available - \$1.50 per child - \$3.00 per family
**No class week of June 24

14-FARMINGTON
Pleasantville
(2850 W. Nine Mile Rd. E. of Haggerty)
1 day per wk\$40 2 days\$54 Unlimited\$69
* \$10.00 rental fee will be charged for the step classes or bring your own step.
MW 6:15 A.M. Low Impact June 10 S. Kamouris
MW 9:30 A.M. Hi/Low Impact June 10 L. Pierce
MW 6:30 P.M. Hi/Low Impact June 10 H. Jones
Early Bird!
TH 6:00 A.M. Hi/Low Impact June 11 K. Black
TH 6:30 P.M. STEP II June 11 L. Gigarc
Sat. 8:00 A.M. Hi/Low Impact June 15 L. Gigarc
*Baby-sitting available - \$1.50 per child - \$3.00 per family

15-NOWI
Novi Civic Center
145175 W. 13 Mile Rd., between Novi & Twp. 810-347-0400
(New residue fee 20%)
Please bring a mat or towel to classes.
1 day per wk\$40 2 days\$54 Unlimited\$69
* \$10.00 rental fee will be charged for the step classes or bring your own step.
MW 9:00 A.M. Low Impact June 10 S. Brown
MW 10:15 A.M. STEP II June 10 L. Gigarc
MW 6:00 P.M. Hi/Low Impact June 10 L. Burke
MW 7:05 P.M. STEP II June 10 R. Kasidian
Sat. 8:00 A.M. STEP II June 15 B. Kahanan
*Baby-sitting available - \$1.50 per child - \$3.00 per family

Novi High School
(Summer location: 24362 Twp. S.E. corner of 10 Mile & Twp.)
Classes will be held in the Fieldhouse - Multi-purpose room
NO CLASSES July 4th or Sept. 2nd
(Register through Novi Comm. Ed. - 816-448-1203)
1 day per wk\$40 2 days\$54 Unlimited\$69
1 day per wk\$52 2 days\$71 Unlimited\$80
MW/TH 7:00 P.M. Hi/Low Impact June 17 T. Srunka

16-SOUTH LYON
Spartanburg, South Lyon Community Education
(Register thru S. Lyon - 810-437-8155)
STEP aerobics. \$5.00 step rental payable to instructor.
Community Education Center
(off Haven St. W of Paradise Tr. N. of 12 Mile)
NO CLASSES: week of July 1st
1 day per wk\$24 2 days\$33 Unlimited\$42
TH 7:30 P.M. Low Impact June 18 P. Mason

17-WIXOM
Sponsored by: Wilson Community Services (810-624-8650)
14945 Fordsia Tr. E. of Wilson Rd.)
Please bring a mat or towel to classes.
1 day per wk\$24 2 days\$33 Unlimited\$42
MW 9:00 A.M. Hi/Low Impact July 8 C. Longville
TH 9:00 A.M. Hi/Low Impact July 9 R. VanMatre
MW 6:30 P.M. Low/Condo July 8 A. Parsons
TH 6:30 P.M. STEP II July 9 S. Davis
STEP aerobics. \$5.00 step rental payable to instructor
*Baby-sitting available - \$1.50 per child

"INDICATES BABYSITTING AVAILABLE"

1-800-285-6968

Farm eyed as site for complex

Continued from 1

Plans could be jelled within the next 30 days, he added.

Next door to the property in question, Judy Ely owns the historic home and barn which were once part of the farm. She operates The Barn Antiques in one building and plans a bed and breakfast business in the 1827 house, where she also lives.

"It could be the greatest thing to come down the pike or it could be everything we tried to do here will go out the window," Ely said.

She explained that on the one hand, the recreation complex could bring more business to her antiques store.

On the other hand, if she tries to sell her two-acre, residentially-zoned property, problems could crop up. To the east and to the north will be the sports facility. To the west of the Ely complex, a temple for members of the Sikh religion is planned. The permit to run the business in the barn is not transferable to a new owner, Ely said.

"If (the sports club) is a huge building. Here we are sitting on Eight Mile. What are my chances of selling this for a residential home? If we rezoned to commercial, our taxes triple," she said.

"Now, it all has to go in light

"It's a nice facility. Whether or not the City of Novi wants that at the location they want to go in, is not my decision. If they ever do it in Novi, they would have to do it a lot better. ... That can't go on that site unless it is rezoned."

Steve Cohen
Novi Planning Act

Industrial or commercial (zoning). Why does it have to go here? If Mr. Big Money wants it, they're going to get it. That's life." The city is currently developing a sports park at the corner of Eight Mile and Napier roads. A sports facility would create a recreational corridor for Novi.

Parks and Recreation Director Dan Davis said that that The Sports Club could provide "a good partnership opportunity for the city." Novi could buy land from the developer and continue with current plans for a joint public/private ice arena with the Community Sports Club.

"We still believe the location is a suitable location. It still has easy access from all the express ways, as well as close enough for all our residents to access," Davis said.

If The Sports Club comes in with a private swimming pool, it might impact the city's plans for a municipal pool, Davis added.

"We're going to take the approach to kind of wait and see if they do come into being and see what kind of niche they establish. We can piggy back onto that, we can complement that," he explained.

"Our proposal might be considerably smaller than we might forecast. We're taking a wait and see attitude."

Members of the Novi City Council and Parks and Recreation Commission have already toured The Sports Club of West Bloomfield. The West Bloomfield business offers a variety of indoor sports, as well as classes in exercise and the martial arts.

"You open the floodgates, you're going to cause a whole restructuring of the zoning. I'm not saying it's a bad plan," Young said.

"What it does for the whole scheme planning for the whole area, what assurance do residents have?"

McLallen gets a view of Archer's job running Detroit

By WENDY PIERMAN MITZEL
Staff Writer

"His desk looks better than mine," said Novi Mayor Kathleen McLallen.

Sitting behind Detroit Mayor Dennis Archer's desk high above the Motor City and looking out on a spectacular view of the river, McLallen surveyed Archer's organized piles.

The two heads of local government exchanged places Wednesday, May 22, on Mayor Exchange Day. Mayors all over the state played musical chairs as part of Michigan Week.

In the past year, social events and speaking engagements have yielded a friendship between the two mayors and when the week began approaching McLallen requested the share the day with Detroit.

"We began knitting together the similarities in our communities ... and we decided we needed to get a whole lot better acquainted," said McLallen, at a Detroit City Council meeting that morning. "We're really two sides of the same family."

McLallen and her entourage of council members Kathy Mutch and Nancy Cassis, arrived at a Detroit City Council meeting about 10 a.m. to meet the deputy mayor Nettle Seabrooks, and other members of the Archer administration.

The women spent much of the morning discussing leadership strategies and changes in both the cities. Then it was onto the Detroit City Council meeting. After introductions the Novi troupe sat in on some of the Greater Detroit Chamber of Commerce building.

There they met president Richard Blouse Jr. to discuss business development in the region and ate lunch.

Then Paul Piper, assistant to the mayor in charge of economic development, conducted a tour of the city's rejuvenating areas including new subdivision Victoria Park, Belle Isle, the Woodward Corridor, Brush Park, Harmony Park, the new Veteran's Hospital, the recently restored and reopened Detroit Opera House and the GM plant.

Chrysler plans and other industrial empowerment zones in the city.

Detroit was one of six cities around the country to receive nearly \$100 million in Federal Aid and tax incentives for private, non-profit and public entities to revive distressed areas.

Archer greeted with Novi pomp

By JAN JEFFRES
Staff Writer

When Detroit Mayor Dennis Archer came to Novi last week, he was greeted with all the pomp and circumstance the city could muster.

But never mind the official jolliter and fanfare. Two of his biggest fans were in the Novi Square Center.

"He is the best mayor Detroit ever had. He's friendly, he's not a fair, I was proud to shake his hand," said Frances Verdardi, 78.

"I know he is. I like the way he talks on TV," her friend Mary Munter, 82, added.

"He's a nice looking man."

At the start of his jam packed Novi schedule on May 22, Archer was given the grand tour of the Novi Civic Center, even climbing into the treasurer'sault. Then he was officially sworn in as Novi's mayor for one day by Deputy City Clerk Nancy Reutter, Meanwhile, Novi's 364 day a year mayor, Kathleen McLallen, was in Detroit. Starting (that 2001) will be Detroit's 38th anniversary, the new mayor confessed to a twinge of jealousy after reviewing Novi's swanky city hall.

"Sometimes when I'm working in Detroit and its infrastructure, it feels like it's 300 years old," Archer said.

"I sort of envy you as I walk through the city hall. This is six to seven years old now. You're having the opportunity to deal with high technology and implementing it. We've just got through replacing our rotary dial telephones."

Mayor Pro Ten Hugh Crawford did the honors for the day, as did Council Member Bob Schmidt. Archer was met by Novi's city staff, dressed to the nines, as well as by members of the Novi Chamber of Commerce.

Employees had cleared their desktops for the occasion.

"We've never had anyone come with their own security before," Parks and Recreation Special



Detroit mayor Dennis Archer relaxing on a pontoon boat out on Walled Lake.

Photo by BRYAN MITCHELL

McLallen runs Detroit for a day

Continued from 1

Blouse and McLallen discussed how the two cities are trying to recruit various types of businesses to make well rounded communities. Blouse said the focus is on revitalizing medical facilities into a designated medical area downtown. McLallen said Novi is trying to get medical and industry.

Archer proved so popular throughout the day, Crawford said, that he wasn't sure Novi was going to give him back to Detroit.

"We make it inviting but at the same time keep them under control."

Both officials expressed interest in examining how the automobile plants in Detroit are built with minimal visual impact to the city and the successful use of green space.

McLallen also questioned the benefits of the Detroit Cobo Hall tax on suburban hotels.

Why should the city charge and pay those taxes and get nothing back? she asked.

But Seabrooks and Blouse explained the suburban cities gain from Cobo because it brings convention guests into the area and into the suburbs. The downtown can't handle all the visitors so they have to go to cities like Novi.

What Novi should do is run more shuttles to and from downtown to make it easier for people to access, Blouse suggested.

Blouse said Detroit is also looking towards improving the bus system and encouraging a regional mass transit system. He said despite rumors to the contrary, the Big Three automakers are in favor of mass transit.

He said the chamber and city are working together to improve the infrastructure around the city. Freeways built for the year 2000 and beyond will help suburbanites get around better, too, he said.

Novi man killed in car crash Monday

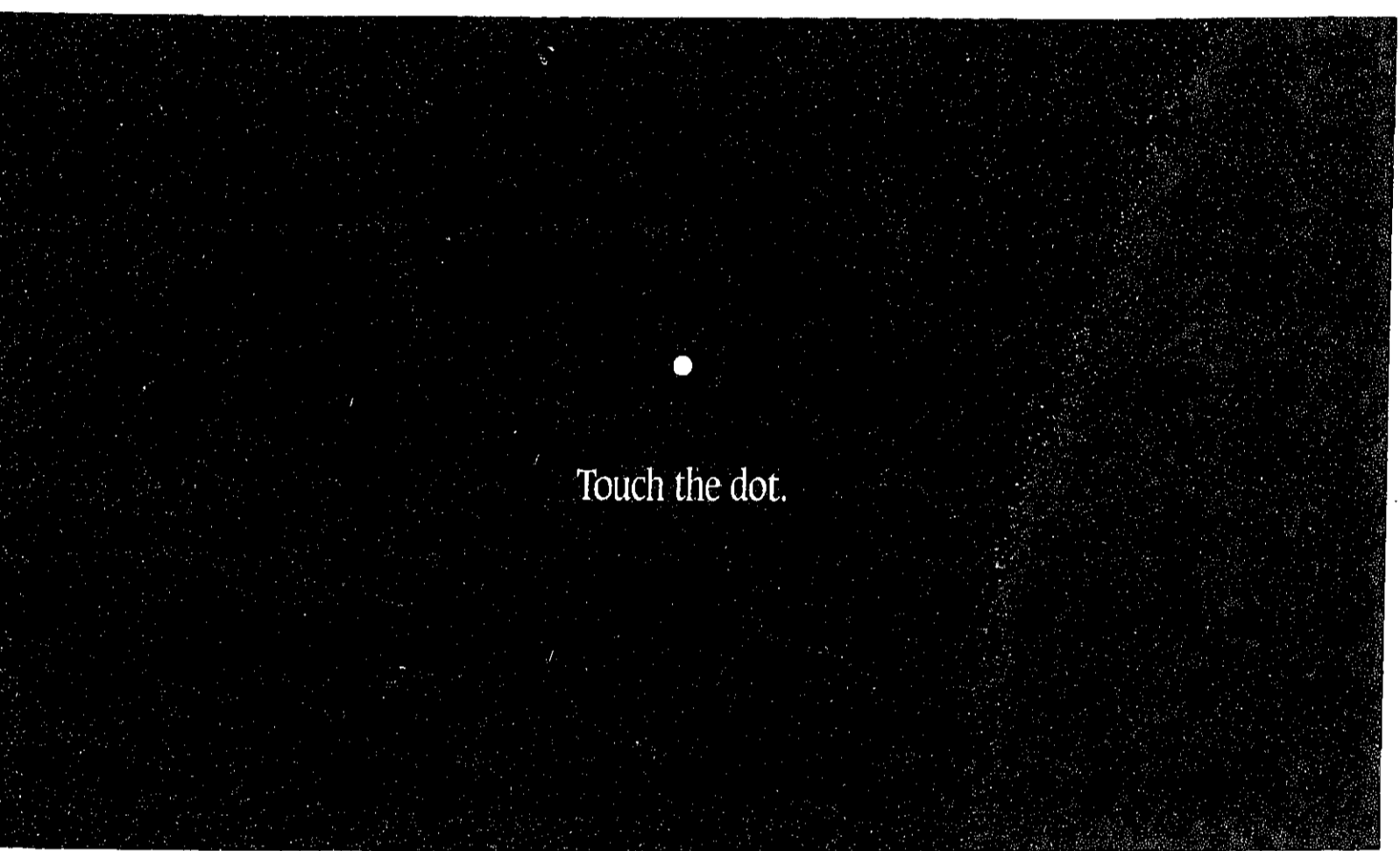
Continued from 1

eight fatalities over the three day weekend - four less than last year. Four of the eight fatalities were alcohol related, she said.

Wiggins said that police investigators have not yet determined the estimated speed of the vehicle, but according to eyewitnesses the car was traveling well in excess of the posted 40 mph speed limit. It is unknown whether any of the passengers were wearing seatbelts at the time of the crash.

Wiggins did state that police believe alcohol was involved in the accident. He said that investigators obtained a search warrant for a blood sample from the driver, and the sample was transferred to the Michigan State Police Crime Lab for analysis.

Memorial Day weekend, along with the Labor Day holiday, resulted in the highest number of traffic related injuries and fatalities, according to spokesperson Nancy Cain of the Michigan branch of AAA. Cain said this Memorial Day weekend was better than last year with preliminary figures showing



Touch the dot.

Health Notes

Well Child Clinic
Oakland County Health Division's Child Health Conferences provide free ongoing well care for children from birth to school entry. Families who do not have an HMO or Medicaid may be eligible. Clinics are held at 14 locations throughout Oakland County.
Appointment is required. For more information, call: North Oakland, 858-1311 or 858-4001; South Oakland, 424-7066 or 424-7067.

Casterline Funeral Home, Inc.
Proud to serve the community since 1937.
We offer Forethought® funeral planning...before the need arises.
122 WEST DUNLAP STREET
NORTHVILLE, MICHIGAN 48167
(810) 349-0611
RAY J. CASTERLINE II
RAY J. CASTERLINE 1893 - 1959 FRED A. CASTERLINE 1920 - 1992

Spring Festival of Arts & Crafts
June 8 & 9 • 10am-5pm
Domino's Farms
(formerly held at Cobblestone Farm)
100 Juried artists • Food available
petting farm • animal shows • hayrides
\$2 admission to craft show • \$2.50 to petting farm
Plenty of free parking • Free shuttle bus from lot
Daily Promotions • 313/971-7424
http://www.daycrafts.com

A mammogram will detect even the smallest cancer years before you will feel it.

Because most breast cancers occur in women who don't have any identifiable risk factors, mammograms are very important to early diagnosis. Your risk may increase as you get older, if you have a family history of breast cancer, if you have never had children or had your first child after age 30.

A routine screening mammogram has been shown to decrease mortality by breast cancer by 25% in most menopausal patients. The American Cancer guidelines suggest that if you're 35 - 40 years old you should schedule a baseline mammogram. If you're 40 - 50 you should schedule a mammogram every one to two years. And if you're over 50, a mammogram is recommended every year.

Botsford, an FDA Certified Mammography Facility, is fully licensed by the Michigan Department of Public Health and has a program and mammography equipment certified by the American College of Radiology.

A doctor's prescription is not required. Call Central Scheduling at (810) 471-8100 to set up your appointment today.



Reaching Out To The People Of Our Community.
28050 Grand River Avenue • Farmington Hills, MI 48336-5933

Congratulations Graduate

 John, You will find success in all you do. The future is yours son! Love, Mom & Dad	 Monica, May all of your dreams and wishes come true! We are so proud of you! Love, Mom, Jacob & Pat	 Lindsay, I'm so proud of you! You're the best there is, & don't ever forget it! Hugs & Kisses, BA
---	---	---

CLASSIC INTERIORS FURNITURE

19th ANNUAL WAREHOUSE SALE
SATURDAY, JUNE 1st - 9:30 - 5:30
SUNDAY, JUNE 2nd - 1:00 - 5:00
CLOSED ALL DAY FRIDAY, MAY 31ST

A SALE OF HUGE PROPORTIONS

ONCE A YEAR WE CLEAN OUR WAREHOUSE AND OFFER FANTASTIC SAVINGS ON DRastically REDUCED FLOOR SAMPLES, DISCONTINUED STYLES, DAMAGED ITEMS, ONE-OF-A-KIND CHAIRS, SOFAS, LAMPS, END TABLES, PICTURES, DINING CHAIRS, AND LEATHER SOFAS AND CHAIRS

ALL FROM TOP NAME MANUFACTURERS PENNSYLVANIA HOUSE, THOMASVILLE, HARDEN, LEXINGTON AND MANY MORE!
SAVE 40% TO 75%

20292 Middlebelt, Livonia South of 8 Mile
(810) 474-6900

• All items over \$100. • All sale items subject to availability. • All items sold "AS IS" • No returns or exchanges.

CLASSIC INTERIORS FURNITURE

ANNOUNCING: The Most Important 6 Weeks in Your Life!

Are you a college graduate--Class of '96 or earlier?
Do you have a liberal arts or technical degree?
Are you job-improving or job-hunting?
Are you thinking of returning to work after raising your family?

ST. MARY'S COLLEGE AT ORCHARD LAKE HAS THE ANSWER: An intensive six-week (June 3-July 12) course, "An Introduction to the World of Business." A faculty of successful executives and business consultants will share their experiences and expertise to augment your degree with an understanding of vital business concepts, procedures and practices that will give you a head start on your job search.

Two days of job interviews with recognized area employers will conclude the program.

This is a unique opportunity to spend six weeks with outstanding executives in an interactive environment--an opportunity which you may never have again!

A partial list of the faculty:
--ALICIA JOHNSON, B.A., former vice president of Cummings Diesel and director of European and Mideast Operations for its Fleetguard Division.
--BASIL JANAVARAS, Ph.D., director of the Executive Management Program at St. Thomas University, St. Paul, Minn., and president of JAI, consultants on global markets.
--RANDY ABBOTT, J.D., long experienced in corporate law; vice president for Academic Affairs at Southwest State University, Marshall, Minn.
--LEE McNEW, M.A., securities analyst and successful entrepreneur; owner for 14 years of the Clarkston Cafe, one of Michigan's most successful upscale restaurants.

the NOVI NEWS

SAVE 30%

Subscribe now for only \$18⁰⁰*

What a great deal! Rush me one year (52 issues) of THE NOVI NEWS for only \$18.00. I save 30% off the street sale price of \$26.00.
*Offer good for new subscribers only. Offer good until May 31, 1996.

Name _____
Address _____
City/State/Zip _____
Phone _____

Mail to: THE NOVI NEWS, Circulation, P.O. Box 470, Howell, MI 48844

30% 40% 50%

SALE

ONE DAY ONLY

SATURDAY, JUNE 1 FROM 8:00AM-9:30 PM

- 30% off misses', petites' & plus-size selected coordinates. Reg. \$18-\$88, sale 12.60-61.60
30% off maternity sportswear & basics, sale 2.30-42.00
- 30-40% off plus-size selected sportswear.
Reg. 11.99-28.00, sale 8.39-16.80
30-40% off misses' related weekend wear, sale 9.80-23.80
- 30% off entire stock misses' casual shirts and knit tops. Reg. \$16-\$28, sale 11.20-19.60
- 30% off entire stock juniors', misses', plus-size and petites' dresses, sale 20.99-69.99
- 30-40% off juniors' skirts, pants & fashion jeans, sweaters & knit tops, sale 6.29-30.80
- 30% off leather handbags, sale 14.00-45.50
- 30% off selected famous-maker jewelry.
Reg. \$6-\$60, sale 4.20-42.00
- 30-33% off Hanes Too!, Profiles' and Moments[™] hosiery. Reg. 2.00-7.50, sale 1.34-5.25
- 33% off Timex[®], Relic & Sonoma watches.
Reg. 18.95-64.95, sale 12.69-43.51
- 30% off all misses' sleepwear, sale 10.49-24.49
- 30% off toys, sale .41-69.99 Excludes LEGO[®].
- 30% off all soccer flats. 19.99-59.99, sale 13.99-41.99
- 30% off adults' team apparel, outerwear and accessories, sale 6.99-55.99 Excludes Champion[®].
- 30-50% off window treatments, sale 8.39-62.99
- 33-40% off tablelinens, kitchen textiles, decorative pillows & chair pads, sale .66-30.81
30% off Fieldcrest[®] & Cannon Royal Family[®] slipcovers, 8.39-104.99
- 30% off all sheets, comforters & access., 4.89-209.99
- 30-50% off all vacuums, breadmakers, microwave ovens & accessories, sale 1.39-224.99
30% off all T-Fal[®] open-stock cookware & bakeware, 7.69-55.99
- 30% off entire stock furniture, sale 19.99-349.99
30-50% off picnic and patio shop, sale .24-99.99
- 30-40% off all tableware. 4.75-124.99, sale 3.32-87.49
- 30-60% off all picture frames, framed art, photo albums & stationery gifts, sale .55-76.99
- 30-50% off entire stock candles, wrought iron & decorative lighting, sale .55-31.49
- 40% off misses', petites' & plus-size Gloria Vanderbilt[®] sportswear, sale 8.40-27.00
- 40% off misses' career walk shorts, sale 13.80-18.00
- 40% off misses', petites' and plus-size selected coordinates. Reg. \$18-\$68, sale 10.80-40.80
- 40% off juniors' bike shorts and screen-printed tees. Reg. 7.99-22.00, sale 4.79-13.20
- 40% off ladies anklets and trouser socks.
Reg. 2.49-7.99, sale 1.49-4.79
- 40% off trend & color jewelry, sale 2.39-7.79
Excludes famous-maker jewelry.
- 40% off wallets-on-a-string, water bottles & nylon belt bags. Reg. 7.99-25.00, sale 4.79-15.00
- 40% off women's fashion belts & hats, sale \$3-\$12
- 40% off Bali[®] & Warner's[®] foundations.
Reg. 8.50-26.50, sale 5.10-15.90
- 40% off all sleepwear separates, robes, cover-ups and dusters, sale 7.79-29.99
- 40% off boys' & girls' selected name brands.
Reg. 9.99-33.99, sale 5.99-20.39
Boys' 4-20 selected tops, shorts & jeans, sale 2.99-17.99
- 40% off infants'-girls' 4-16 short sets and rompers. Reg. 10.99-34.99, sale 6.59-20.99
40% off girls' selected summer accessories, sale 1.79-11.39
- 40% off kids' cover-ups, sale 20.99-23.99
Found by the beach towels.
- 40% off men's outerwear, sale \$24-\$45
- 40% off men's, women's and kids' selected athletic shoes. Reg. 27.99-84.99, sale 16.79-49.99
- 40% off men's and women's Nike[®] Air Deschütz sandals. Reg. 59.99, sale 35.99
- 40% off entire stock bath & accent rugs.
Reg. 8.99-169.99, sale 5.39-101.99
- 40% off all bath accessories, shower curtains, and scales. Reg. 1.99-99.99, sale 1.19-59.99
- 40% off entire stock bed pillows, pads and accessories. Reg. 4.99-69.99, sale 2.99-41.99
- 40% off entire stock blankets and throws.
Reg. 19.99-49.99, sale 11.99-29.99
- 40% off all 5-piece bridge sets, sale 69.99-113.99
- 50% off misses', petites' and plus-size selected knit tops, shorts and casual pants.
Reg. \$12-\$24, sale \$6-\$12
- 50% off juniors' tanks and nylon shorts.
Reg. 7.99-9.99, sale 3.99-4.99
- 50% off misses' spring outerwear.
Reg. 39.99-79.99, sale 19.99-39.99
- 50% off entire stock women's sunglasses.
Reg. \$12-\$25, sale 6.00-12.50
- 50% off women's beach slippers, sale 4.99
- 50% off Classic Moments potpourri, sale 2.49
- 60% off entire stock fine jewelry.
Reg. 24.99-1,200.00, sale 9.99-480.00
- 50% off toddlers'-girls' 4-6x Lee[®], Levi's[®] and Sonoma denim shorts, sale 7.00-11.49
Genuine Sonoma Jean Company is a registered trademark.
- 50% off infants'-girls' 4-16 dresses and 4-16 selected Palettes[™], sale 4.99-21.49
- 50% off men's selected knit and woven sport shirts. Reg. \$25-\$32, sale 12.50-16.00
- 50% off young men's banded-collar shirts.
Reg. 21.99-42.00, sale \$11-\$21
- 50% off adults' selected athletic apparel.
Reg. 14.99-19.99, sale 7.49-9.99
- 50% off entire stock cleated shoes.
Reg. 19.99-39.99, sale 9.99-19.99
- 50% off men's, women's and kids' selected dress and casual shoes, sale 6.49-39.99
- 50% off beach towels. Reg. 9.99-35.99, sale 4.99-17.99
- 50% off entire stock towels, sale 1.49-9.99
Includes hand towels and washcloths in stripes and solids.
- 50% off Bill Blass[™] luxury sheets, sale 4.99-14.99
- 50% off all handmade quilts and shams.
Reg. 24.99-129.99, sale 12.49-64.99
- 50% off Home Classics[®] mini-blinds, sale 3.49-14.99
- 50% off all Corning Ware[®] open-stock casseroles. Reg. 7.99-36.99, sale 3.99-18.49
- 50% off day lily resin stack chairs, sale 5.99

PLUS, LOOK FOR MORE SUPER SAVINGS THROUGHOUT THE STORE!

Storewide Apparel
CLEARANCE



60% OFF

When you take an additional 33% off already-reduced clearance prices.

Clearance prices represent savings off original prices. Selection varies by store.
Interim markdowns may have been taken. Sorry, no price adjustments given on prior purchases.
Clearance not available at Highland Heights, Westgate, Howland Commons, Wichita East,
Wichita West, Springfield, Louisville & Jackson Crossing stores.

KOHL'S

FOR THE KOHL'S STORE NEAREST YOU, CALL 1-800-837-1500

HIGHLIGHTS:
Walk benefits agency's programs—2B

CUSTOMER IS RIGHT:
Author committed to belief in customer satisfaction—5B

STUDY SECRETS:
Academic team members share their ideas—3B

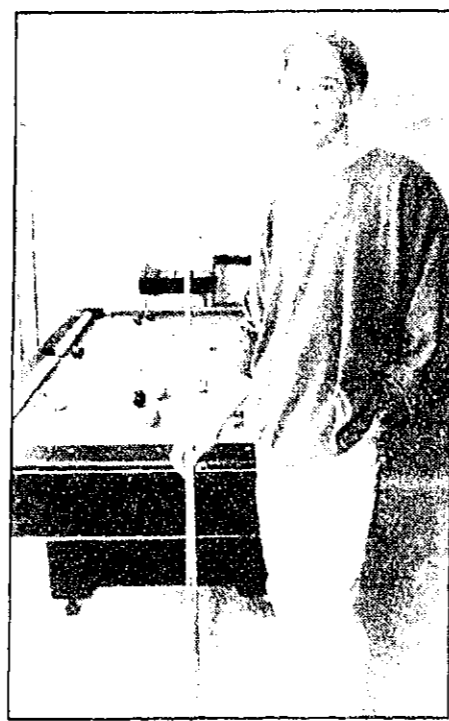
DIVERSIONS:
"Just be Patient" spoofs television series—6B

All-Area Academic Team

Here they are, the 10 members of our sixth annual All-Area Academic Team, along with the 15 other top students who received honorable mention recognition. Members of the team are selected on the basis of grade point average and national test scores.

Photos by Hal Gould, Bryan Mitchell, Scott Benedict, Alan Ward, Ron Ponkey and Margaret Wolfgang

KEVIN BECKER
Northville High School
Parents: Mike and Linda Becker
College: University of Michigan
Career Plans: Biomedical engineer
Biggest Influence: "My parents gave me support, guidance and encouragement when I needed it but also the independence to learn for myself."



NICOLE McMILLAN
South Lyon High School
Parents: Ted and Betty McMillan
College: Michigan State
Career Plans: Engineering
Biggest Influence: "My dad because I always looked up to how smart he is and he always encourages me in whatever I do."

BRADFORD BAILEY
South Lyon High School
Parents: Wayne and Patricia Bailey
College: GMI Institute
Career Plans: Mechanical engineering

JACLYN BURKE
South Lyon High School
Parents: Gary and Mary Burke
College: Central Michigan
Career Plans: Environmental studies

ROBERT CHAVEZ
Milford High School
Parents: Michael and Judith Pryor
College: University of Michigan
Career Plans: Pediatric medicine

LESA BEGLEY
South Lyon High School
Parents: William and Nancy Begley
College: University of Michigan
Career Plans: Biological science or accounting
Biggest Influence: "My mother. She didn't pressure me and had faith in me when nobody else did — including myself."



BLYTHE MYERS
Novi High School
Parents: Dale and Margaret Myers
College: University of Toledo
Career Plans: High school chemistry teacher
Biggest Influence: "My parents — they've always pushed me to do my best, but they also encourage me to have fun."

JENNIFER DILLON
Lakeland High School
Parents: Donald and Joan Dillon
College: Michigan State
Career Plans: Physical therapy

JULIE HARRIS
Novi High School
Parents: Gerald and Susan Harris
College: Michigan State
Career Plans: Book editor/publishing

AMITY HECKEMEYER
Northville High School
Parents: Anthony and Phyllis Heckemeyer
College: University of Michigan
Career Plans: Engineering

GUY LAROUCHE
Lakeland High School
Parents: David and Christine Larouche
College: Michigan Tech
Career Plans: Chemical engineer

AMANDA LONG
Milford High School
Parents: Michael and Audrey Long
College: University of Michigan
Career Plans: Physician

MATT MINARD
Northville High School
Parents: Don and Annette Minard
College: University of Michigan
Career Plans: Secondary education

JESSICA NELSON
Lakeland High School
Parents: Cameron Nelson, Stephen and Beverly Hawkins
College: University of Michigan
Career Plans: Medicine

MICHELLE OUELLETTE
Milford High School
Parents: Timothy and Janice Ouellette
College: Hope College
Career Plans: Astrophysics professor

MARTIN SAGER
Milford High School
Parents: Martin and Jean Sager
College: University of Michigan
Career Plans: Mechanical engineering

RICHARD VANDERMASS
Novi High School
Parents: Bill and Barb Vandermass
College: Duke University
Career Plans: Mechanical engineering

ERIC WOODS
South Lyon High School
Parents: Greg and Sandy Marklew, Dee and Marsha Woods
College: John Brown University
Career Plans: Journalism

ELIZABETH YOUNG
Lakeland High School
Parents: Linda Fitzgerald
College: Brigham Young University
Career Plans: Elementary education

MICHAEL CLANCY
Northville High School
Parents: Michael and Linda Clancy
College: University of Dayton
Career Plans: Undecided



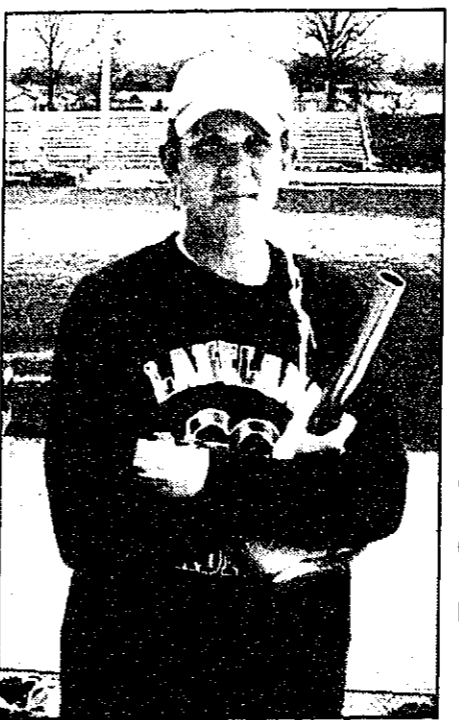
MATTHEW PLUMB
Milford High School
Parents: Brock and Katie Plumb
College: University of Michigan
Career Plans: Undecided
Biggest Influence: "My parents have always encouraged me to set high standards for myself."

KELLY KEARNEY
Novi High School
Parents: Myler and Patricia Kearney
College: Kalamazoo College
Career Plans: Medicine
Biggest Influence: "My parents have taught me the importance of hard work and perseverance."



ANDREW SONG
Northville High School
Parents: Ching and Jenny Song
College: Yale
Career Plans: Corporate or international law
Biggest Influence: "My teacher Mr. Donahue taught me the value of learning for the sake of learning."

ELIZABETH LANGHAM
Novi High School
Parents: Keith and Kathleen Langham
College: University of Michigan
Career Plans: Aerospace or aeronautics, vehicle design
Biggest Influence: "My parents have taught me to set goals for myself and never give in."



SETH WASHBURN
Lakeland High School
Parents: Berk and Carolyn Washburn
College: Brigham Young University
Career Plans: Chemical engineer
Biggest Influence: "My parents motivated me to achieve good grades."

To be matched instantly with area singles and to place your FREE ad

Christian Singles Network logo with a cross and the text 'Christian Singles Network'.

To listen to area singles describe themselves or respond to ads

Female Seeking Males Call 1-900-933-6226 \$1.98 per minute

"For by grace are ye saved through faith," Ephesians 2:8

CALL 1-900-933-6226 ONLY \$1.98 per minute. Charges will appear on your monthly telephone bill.

ALL LOVE ROCKY DFW, 30, 4'10", 210lbs. Admired from love...

FRIENDS FIRST SWFC, 44, 5'4", weight proportionate, blonde hair...

ACTIVE BUT ROMANTIC SWM, 27, 6, brown hair/eyes, enjoys biking...

IN THE LANSING AREA SWF, 18, 5'2", reddish-brown hair, green eyes...

JUST GETTING STARTED DWF, 42, 5'11", 115lbs. enjoys doing out...

VERY ATHLETIC SWM, 27, light brown hair, hazel/green eyes...

GENTLE MALE WANTED SWF, 18, 100lbs, blonde hair, green eyes...

INTERESTED? DWF, 33, outgoing, enjoys remodeling, bowling...

LOOKING FOR YOU SWM, 28, 6'2", 165lbs, blond hair, blue eyes...

LIKE TO SPEND TIME... SWF, 18, 200lbs, red hair, brown eyes, enjoys...

SENSE OF HUMOR SWF, 46, 5'8", reddish-blond hair, blue eyes...

LOVES MOVIES SWM, 28, 5'7", long black hair, brown eyes...

POETRY WRITER SWF, 20, 5'7", 150lbs, dark hair, blue eyes...

BE A GOOD LISTENER DWF, 47, dark hair, hazel eyes, outgoing, easygoing...

LOOKING FOR ROMANCE DWM, 23, 5'9", 142lbs, enjoys the outdoors...

IS SHE FOR YOU? SWM, 20, 5'5", 150lbs, enjoys children, family...

LOOKING FOR YOU DWF, 36, 5'8", 167lbs, blonde hair, blue eyes...

LOOKING FOR YOU SWM, 22, brown hair, blue eyes, enjoys...

LIKES PARACHUTING SWF, 20, 5'10", 128lbs, blonde hair, green eyes...

CHILDREN ARE A PLUS SWM, 30, 5'8", 167lbs, adult hair, grey eyes...

LOOKING FOR YOU SWM, 22, 5'11", 170lbs, outgoing, enjoys sports...

NEW TO THE AREA SWF, 20, 5'8", 128lbs, blonde hair, green eyes...

TRY NEW THINGS SWM, 30, 6, 200lbs, handsome, warm-hearted...

LOOKING FOR YOU SWM, 22, 5'11", 170lbs, outgoing, enjoys sports...

LET'S SPEND TIME Spontaneous, fun-loving SWF, 20, 5', blonde hair...

RAISED IN THE COUNTRY Pretty SWM, 39, 5'2", dark blonde hair, green eyes...

LOOKING FOR YOU SWM, 22, 5'11", 170lbs, outgoing, enjoys sports...

MARK HER LAUGH! SWF, 21, intellectual, fun, humorous, student...

WICKED SENSE OF HUMOR! Artistic, creative, compassionate romantic SWF...

LOOKING FOR YOU SWM, 22, 5'11", 170lbs, outgoing, enjoys sports...

INTEREST YOU! SWF, 21, brown hair, blue eyes, enjoys movies...

BELIEVE IN MIRACLES! SWF, 43, 5'2", 125lbs, loves to travel, romantically...

LOOKING FOR YOU SWM, 22, 5'11", 170lbs, outgoing, enjoys sports...

SEKS BIG TEDDY BEAR SWM, 22, 5'6", blue-eyed blonde, full-figured, loves...

AMBITIOUS SWF, 40, full-figured, brown hair, blue eyes...

LOOKING FOR YOU SWM, 22, 5'11", 170lbs, outgoing, enjoys sports...

LOOKING FOR YOU SWF, 22, 5'5", 115lbs, brown hair, green eyes...

LIVINGSTON COUNTY DWM, 40, 4'5", 232, average figure, spontaneous...

LOOKING FOR YOU SWM, 22, 5'11", 170lbs, outgoing, enjoys sports...

ANYTHING IN COMMON! SWF, 22, 5'5", brown hair, blue eyes, enjoys sports...

VERY PETITE LADY DWF, 40, big, blue eyes, blonde hair, professional...

LOOKING FOR YOU SWM, 22, 5'11", 170lbs, outgoing, enjoys sports...

CARING CATHOLIC SWF, 24, health-conscious, enjoys the outdoors...

INFECTIOUS SMILE Warm, fun-loving SWF, 41, 5'7", brown hair/eyes...

LOOKING FOR YOU SWM, 22, 5'11", 170lbs, outgoing, enjoys sports...

LET'S GET TOGETHER Professional SWF, 24, 5'9", 120lbs, brown hair...

LOOKING FOR LONG-TERM SWF, 44, 5'2", weight proportionate, enjoys going...

LOOKING FOR YOU SWM, 22, 5'11", 170lbs, outgoing, enjoys sports...

SOUND COMPATIBLE! SWF, 24, 5'7", brown hair, hazel eyes, enjoys...

THANKS FOR ANSWERING! SWM, 42, 5'4", weight proportionate, enjoys going...

LOOKING FOR YOU SWM, 22, 5'11", 170lbs, outgoing, enjoys sports...

HUMOROUS PROFESSIONAL Fun-loving, compassionate SWF, 25, tall/guy...

ACTIVE LADY SWF, 42, 5'5", 115lbs, attractive, athletic, outgoing...

LOOKING FOR YOU SWM, 22, 5'11", 170lbs, outgoing, enjoys sports...

FUN AT THE FARM SWM, 20, 5'7", 140lbs, brown hair, green eyes...

FEELS LIKE TWENTY-THREE SWF, 42, 5'2", sandy-blond hair, hazel/blue eyes...

LOOKING FOR YOU SWM, 22, 5'11", 170lbs, outgoing, enjoys sports...

LIKES ANIMALS SWF, 27, 5'3", dark hair, green eyes, enjoys...

LOOKING FOR MR. RIGHT SWF, 43, 5'4", medium build, enjoys bowling, quiet...

LOOKING FOR YOU SWM, 22, 5'11", 170lbs, outgoing, enjoys sports...

TWO OF US, ONE DREAM SWF, 20, professional, enjoys collecting, volleyball...

HOPELESSLY ROMANTIC DWF, 42, 5'5", 150lbs, dark hair/eyes, humorous...

LOOKING FOR YOU SWM, 22, 5'11", 170lbs, outgoing, enjoys sports...

IF INTERESTED, CALL! SWF, 30, 5'2", 135lbs, smoker, one child, likes...

PRIVATE PILOT WANTED Young, spontaneous SWF, 43, 5'11", redhead...

LOOKING FOR YOU SWM, 22, 5'11", 170lbs, outgoing, enjoys sports...

I'LL BUY COFFEE! SWF, 44, 5'5", strawberry blonde, enjoys animals...

CHRISTIAN SINGLES NETWORK is available exclusively for single people...

LOOKING FOR YOU SWM, 22, 5'11", 170lbs, outgoing, enjoys sports...

the NOVI NEWS Sports

SOFTBALL: Wildcats take third in home tournament 110B
PSA: Men should avoid sex before prostate test 112B
THURSDAY May 30, 1996
HEALTH: Oral cancer kills thousands every year 112B

Second fiddle

Runners take silver in conference final

By SCOTT DANIEL Sports Editor
Only one word can describe Brighton in girls track and field - marathons.



Brighton wins boys' title, too

By SCOTT DANIEL Sports Editor
Every year, Novi High's freshmen track runners seem to get stronger and stronger.

KVC Finals Track and Field Girls table with columns for Team and Points.

That gives the champs a bigger talent pool to draw from. Despite the advantage, Tommieck left her team gave a good account of itself.

Novi's Roxanne Warner finished third in the KVC in the shot put. She ran a 5:26.7 for second place while Michelle Sella was sixth in 5:34.1.

Continued on 11
KVC Finals Track and Field Boys table with columns for Team and Points.

Lacrosse squad rips Pioneer 9-3



Lacrosse squad rips Pioneer 9-3

By SCOTT DANIEL Sports Editor
As tune ups go, Novi's 9-3 win over Ann Arbor Pioneer May 21 was just about perfect.



Baseballers drop twinbill to Lakeland

By SCOTT DANIEL Sports Editor
When you pitch 10 innings and hold the other team to three runs you should get a "W."

"We had four base running errors that should've scored runs. It was frustrating not to win."
BRIAN HOWARD Novi baseball coach

Agony of defeat
Erin Vogel could only stand and watch May 22 as Novi fell 2-1 to Livonia Stevenson in the soccer district semi-final.

Health Matters

the NOVI
NEWS
12B
THURSDAY
May 30,
1996

Men who take annual PSA blood test should abstain from sex temporarily

Men who undergo annual PSA (prostate-specific antigen) blood screening for prostate cancer should abstain from ejaculation for 48 hours beforehand to ensure the most accurate results. Otherwise, they could be setting themselves up for the anxiety of a false-positive PSA reading - and an unnecessary prostate biopsy, according to University Medical Center researchers.

Their findings, which appear in the April issue of Urology, represent the first published report of the effect of ejaculation on PSA levels in older men.

"We found that among older men, ejaculation temporarily can cause the PSA serum concentration to become abnormally high," says principal investigator Joseph F. Oesterling, M.D., professor of surgery and director of the Michigan Prostate Center. The PSA spike was so significant among those studied, he says, that 15 percent would have qualified - wrongly - for a transrectal ultrasound and prostate biopsy.

invasive diagnostic procedures that together cost about \$1,200.

For the study, Oesterling and co-investigator Marie-Blanche Tchertgen, M.D., a urology resident, obtained baseline PSA levels in 64 healthy men, ages 49 to 79, who had abstained from ejaculation for a week. The subjects' PSA levels again were measured at various post-ejaculatory intervals, ranging from one hour to a week, during which time the subjects also refrained from sex.

The researchers found that PSA levels peaked an hour after ejaculation, when 87 percent of the men experienced a 60 percent increase. After two days, PSA levels were back to normal among 97 percent of the men.

Older men experience higher PSA levels after sex because the tissues that contain the enzyme within the prostate, where it is manufactured, deteriorate with age. "There are several layers of tissue that keep the psa inside the prostate. As a man gets older, these tissues lose

their tightness. When a man is ejaculating, the muscle of the prostate is contracting and relaxing - basically massaging the gland. In older men, this activity can allow PSA more easily to escape into the general circulation," Oesterling explains.

"We conclude, and recommend, that men abstain from ejaculation for 48 hours before they get a PSA test," he says.

"This is going to make the test more accurate and reliable, so that if there's really a PSA increase going on, we'll know it's due to something other than ejaculation."

Co-authors of the study also included James T. Song, M.D., and Myla Strauberman, M.S., of the University of Michigan; and Steven J. Jacobsen, M.D., Ph. D., of the Mayo Clinic in Rochester, Minn.

Early diagnosis key to surviving oral cancer

Despite advances in diagnosis and treatment, nearly 30,000 Americans a year learn that they have oral cancer, and 9,000 will die of it. The average life expectancy of patients with oral cancer is poor: approximately half will be alive five years after diagnosis, and blacks have poorer prospects than whites.

Early diagnosis is key to survival. The good news is that people whose oral cancers are discovered and treated while still in an early stage are likelier to live out a normal life span. The early stages of oral cancer are characterized by white, red, or mixed red and white lesions in the mouth. The lesions may be painless, but if an ulcer or growth in the mouth persists for more than three weeks, you should make an appointment with your dentist or an oral and maxillofacial surgeon for a thorough examination.

At the University of Michigan Health System in Ann Arbor, specialists in dentistry, oral medicine, prosthodontics, and oral and maxillofacial surgery are active in the diagnosis and treatment of oral cancers. Clinicians provide non-surgical and surgical treatment of oral precancerous conditions and oral cancers, depend-

ing upon the extent of the lesion. In collaboration with other cancer-treating departments within the health system, patients with head, neck and oral cancers receive a thorough oral examination and the dental treatment they need before undergoing surgery, radiation therapy or chemotherapy. Patients also receive expert care to help them deal with any complications of cancer treatment, including oral pain, difficulty chewing and swallowing, and nutritional problems.

While radiation therapy and surgery may cure some cancers, they can also cause permanent side-effects like dry mouth and cosmetic defects. Reconstruction specialists can help with after-effects like loss of teeth, jaw bones, palates, noses, eyes and ears. They also provide counseling on preserving teeth, gum tissues, jaw bones and salivary glands following cancer treatment.

There's more hope on the horizon, at least as far as treating oral cancers. Physicians at the Health System's Department of Hospital Dentistry/Oral and Maxillofacial Surgery are working to find better ways to minimize the adverse side effects of treatment. Most radiation thera-

pies for the head and neck cause permanent damage to the salivary glands, making it difficult - for the rest of a person's life - to speak, swallow, and preserve teeth and gum tissues. In collaboration with the Health System's Department of Radiation Oncology, federally funded researchers are investigating a new radiation therapy technique to treat oral cancers - while keeping the salivary glands intact. Preliminary results from this long-term project are helpful. They indicate that these glands can be at least partially preserved even after patients undergo significant radiation therapy for head, neck and oral cancers.

If you or someone you know would like additional information on oral cancer, please call the Department of Hospital Dentistry/Oral and Maxillofacial Surgery at the University of Michigan Health System (313) 936-5950.

Jonathan A. Ship, D.M.D., Director, Department of Hospital Dentistry, University of Michigan Health System. This column is coordinated by the office of planning and marketing at the University of Michigan.

Health Notes

Health Run

The Botsford Center for Health Improvement and the City of Novi are sponsoring the sixth annual "Run for the Health of It" on Sunday, June 9. The race - featuring 8K run, 5K walk and 8K wheelchair events - encourages participation by both competitive and noncompetitive athletes.

"Run for the Health of It" starts at 8:30 a.m. at Botsford Center for Health Improvement, 39750 Grand River in Novi. Held on a rolling, out and back course through the Novi Town Center, day-of-race highlights also include corporate team prediction relays, awards and many participant giveaways.

The entry fees are as follows (early registration will run through May 17 and those fees are listed first): 8K run and wheelchair race - \$12 and \$14; 5K fitness walk - \$8 and \$10; four-person team relay - \$40 and \$50; kids half-mile run (ages 8-12) and 200-yard dash (ages 5-7) - \$8 and \$10. T-shirts are guaranteed to all entries received before May 17, but after May 17 they are subject to availability.

For registration information, call (810) 473-5600. Race proceeds will benefit Novi Youth Assistance.

According to Ed Pienkosz, MS, an exercise physiologist at Botsford's Total Rehabilitation and Athletic Conditioning Center (TRACC), the "Run for the Health of It" emphasizes healthy living. "We will kick off the event with a group stretch," said Pienkosz. "Race packets will include nutrition information, and even the prizes will have a healthy twist."

St. Mary's Hospital

St. Mary's Hospital is offering the following programs:

- Survivors - St. Mary's Hospital will hold a National Cancer Survivors Day celebration at 1:30 p.m. on Sunday, June 2, in the Pavilion lobby. The event is sponsored by the Department of Social Work.

This is part of the ninth annual event held throughout the United States as a way to recognize our nation's more than 10 million cancer survivors, to focus attention on the issue of survivorship, and to acknowledge those professionals dedicated to cancer treatment, research and support services.

St. Mary's Hospital will also hold a tree dedication ceremony outside the Pavilion lobby at 1:30 p.m. as well as sponsor a program featuring a survivors panel. Pat Sachs of the Karmanos Cancer Institute will be the guest speaker. All cancer survivors and family members are invited. Light refreshments will be served. To register, call (313) 655-2929 or toll free at 1-800-494-1653 by May 31.

- Cancer Education Class - St. Mary's Hospital will present the American Cancer Society's "I Can Cope" program for cancer patients, their families and friends from June 11 through July 16. The free, six-week course will meet on Tuesdays from 6:30 to 8 p.m. in the lower level

Conference Room in the main hospital near the Five Mile entrance. Dates are June 11, 18, 25, and July 2, 9, and 16.

The course is designed to help patients, family members and friends learn how to take an active role in the cancer patient's treatment and recovery. Topics include cancer and its causes, prevention, diagnosis, treatment, rehabilitation, management of treatment side effects, adjustment to changes in body image, exercise and proper nutrition, community resources and new potentials as a person with cancer.

The comprehensive course includes lectures, audio-visual programs and group discussion. Presentations will be made by a team of health care professionals.

There is no charge for the program, but registration is required by June 10. For more information or to register, call (313) 432-8542 or toll free at 1-800-494-1653.

- Anxiety - "Coping with Anxiety," a lecture to be presented by Amy Altschuler, B.S.N., R.N.C., a health educator in the Community Outreach program of St. Mary's Hospital, will be held on Monday, June 10, from 7 to 9 p.m. in Pavilion Conference Room B in the Marian Professional Building adjacent to St. Mary's Hospital.

The lecture will include information about the causes of anxiety, specific coping techniques and community resources. There is no charge to attend the lecture and refreshments will be served. For more information or to register, please call (313) 655-2922 or toll free at 1-800-494-1650.

Breastfeeding basics

This workshop covers the "how to's" of breastfeeding - how to start and maintain successful breastfeeding, as well as answering the questions and concerns of women who are already breastfeeding. Classes are held at the Health Development Network at Botsford in Novi. For more information and to register, call (810) 477-6100.

Cholesterol and vision screenings

Total cholesterol screening is conducted by the fingerstick method from 1-4 p.m. on the third Monday of each month at the Botsford Center for Health Improvement-Health Development Network, 39750 Grand River Ave., Novi. There is a \$5 fee. For more information, call (810) 477-6100.

Well Child Clinic

Oakland County Health Division's Child Health Conferences provide free ongoing care to keep children well from birth to school-entry age. Families who do not have an HMO or Medicaid may be eligible. Clinics are held at 14 locations throughout Oakland County.

Services include: Heights and weights; head-to-toe physical examination; immunizations; vision, hearing and lab testing; growth and developmental screening; and counseling with referrals to physicians and area resources as needed.

Appointment is required. For more information, call:

North Oakland: 858-1311 or 858-4001.
South Oakland: 424-7066 or 424-7067.

Providence Hospital

Providence Hospital is offering the following services:

- Providence Hospital and Medical Centers is offering free blood pressure checks on the first Thursday of every month.

This free service is available at Providence Medical Center-Providence Park at the corner of Grand River Avenue and Beck Road from 1-3 p.m. in the Cardiopulmonary Department. Call (810) 380-4225 for further information.

- Health education library - Providence Hospital and Medical Centers is now making its health education library open to the public.

The library has books, video tapes, computer databases, pamphlets and anatomical models available to the public which can be used to learn about illnesses, medications, parenting skills or other health issues.

The library is located at Providence Medical Center-Providence Park, 47601 Grand River, and is open Monday through Friday, 9 a.m. to 3 p.m. Call (810) 380-4110 for more information.

- Physician referral service - Are you new in the community? Do you need to find a doctor and can't determine the best way to start your search?

The Physician Referral Service of Providence Hospital and Medical Centers is available to assist individuals in finding a physician who can meet the specific needs or criteria of the individual.

The service is free of charge and can be reached by calling 1-800-968-5595.

The staff of Physician Referral Services can help locate physicians by specialty or location, finding an office close to your home or work. They can even match individuals with physicians who participate in particular insurance plans. Callers can also receive information on support groups and health education classes and lectures.

- For referral services, call 1-800-968-5595.

- Prostate Cancer - Providence Hospital and Medical Centers offers a free monthly support group for men with prostate cancer.

"Man to Man" meets the second Thursday of each month at 7 p.m. at Providence Hospital in Southfield.

For additional information on "Man to Man," Providence's Prostate Cancer Support Group, call (810) 424-3175.

THINKING ABOUT
CENTRAL
AIR
CONDITIONING
LENNOX
FREE ESTIMATES
(313) 525-1930
UNITED TEMPERATURE
8919 ADDIE BLVD • LIVONIA

349-1700
FEEL FREE TO CALL US WITH
ANY NEWS TIPS.
The Northville Record

EXPERIENCE THE... MONSTER
Weekday Senior Special
Limited Time Only...
2 Player • Not Valid Holidays • 16 Holes W/Golf
\$33.00
Weekday Golf & Cart Special
2 Player • Not Valid Holidays • 16 Holes W/Golf
• Before 12 Noon
\$55.00
Weekend
4 pm Walk Ride Ride w/Dining
18.00 25.50 31.50
5 pm 15.00 22.00 28.00
6 pm 12.00 18.00 24.00
9 Hole Golf & Cart Special 2 Player
• Limited Time Only
Mon, Wed, Fri 1-3pm \$24.95
BRAE BURN GOLF CLUB
10860 W. 5 Mile Rd. • Plymouth, MI 48170
(313) 453-1900 (800) 714-6700
Exit Back Rd. Off M-14
North to 5 Mile Rd., West to Golf Course

MITCH HOUSEY'S
Open 11 A.M.
Businessmen's Lunches
DINNERS from \$6.95
FASHION SHOW
Thursday
Starting
at
Noon
WORLD'S FINEST
PRIME RIB \$11.95
with bone in
Dinner Includes:
Salad, Potato,
Vegetable,
Hot Bread
NOW APPEARING...LIVE
THE SHOWCASEMEN
WEDNESDAY thru SATURDAY
COCKTAIL HOUR
MON. THRU FRI.
4-7 P.M. DAILY
NOW BOOKING BANQUETS
(small or large)
28500 Schoolcraft • Opposite Ladbroke DRC • LIVONIA
425-5520
AMPLE LIGHTED PARKING
OPEN DAILY MON.-SAT. at 11:00 A.M.

90% CASH OUT REFINANCES
• Consolidate Debt
• Payoff High Interest Credit Cards
• Payoff Property or IRS Taxes
• Home Improvements
• Buy An Investment Property
BAD CREDIT AND BANK TURN-DOWNS ACCEPTABLE
(TV's may be limited)
CALL
INNOVATIVE MORTGAGE COMPANY
39555 Orchard Hill Place, Suite 600
Novi, MI 48375
(810) 348-5778 OR (313) 454-9214
NO POINT - NO COST LOANS AVAILABLE!!!

MUST PRESENT COUPON
FENTON FARMS GOLF CLUB
FENTON, MICHIGAN
Tune Up for Summer with
Our May/June Special Rates
PREMIUM GOLF AT AFFORDABLE PRICES
Site of 1995/96 Publix Tournament • USGA 125 Slope
- WEEKDAY ONLY -
9 Holes \$10.00
18 Holes (Before 12 pm) \$16.00
9 Holes Senior (62 or Older) \$7.00
18 Holes Senior (Before 12 pm) \$14.00
- WEEKENDS -
(Walk-ins only before 3pm. Tee times welcome after 3p.m.)
9 Holes \$10.00
18 Holes \$20.00
*Power and Pull Carts Extra
No Rain Checks. No Refunds. Please Observe Proper Fitting Rule.
Not Good for League or Outing Play - Please Call for Tee Times 7 am - 7 pm
PLEASE MENTION THIS COUPON WHEN MAKING TEE TIMES
(810) 629-1212
MUST PRESENT COUPON

When You Insure
Your Home and
Car With Us,
You'll Save \$\$\$
When you insure both your home and car with Auto-Owners, we'll save you money with our special multi-policy discounts.
Call your local Auto-Owners agent today for all the details.
Auto-Owners Insurance
Life Home Car Business
The No Problem People
C. HAROLD BLOOM INSURANCE
108 W. Main, Northville
349-1252

ATTENTION: CRAFT & ANTIQUE DEALERS
Needed for Our New
Walled Lake Location
• 24,000 square foot facility
• Low booth rates
• Booth preconstructed
• Dealers paid twice a month
• Sales tax handling
OPENING IN JUNE!
COUNTRYSIDE CRAFT MALL & ANTIQUES
Countryside manages the sales of more than 750 dealers. 7 days a week, all year round! Come join the success!!
1154 E. West Maple Road (between Dicker Road and Pontiac Trail), Walled Lake
810-926-8650
Livonia & Sterling Heights

349-1700
IS OUR NUMBER
Feel free to call us
with any news tips.
The Northville Record