

# 1974 ANNUAL REPORT

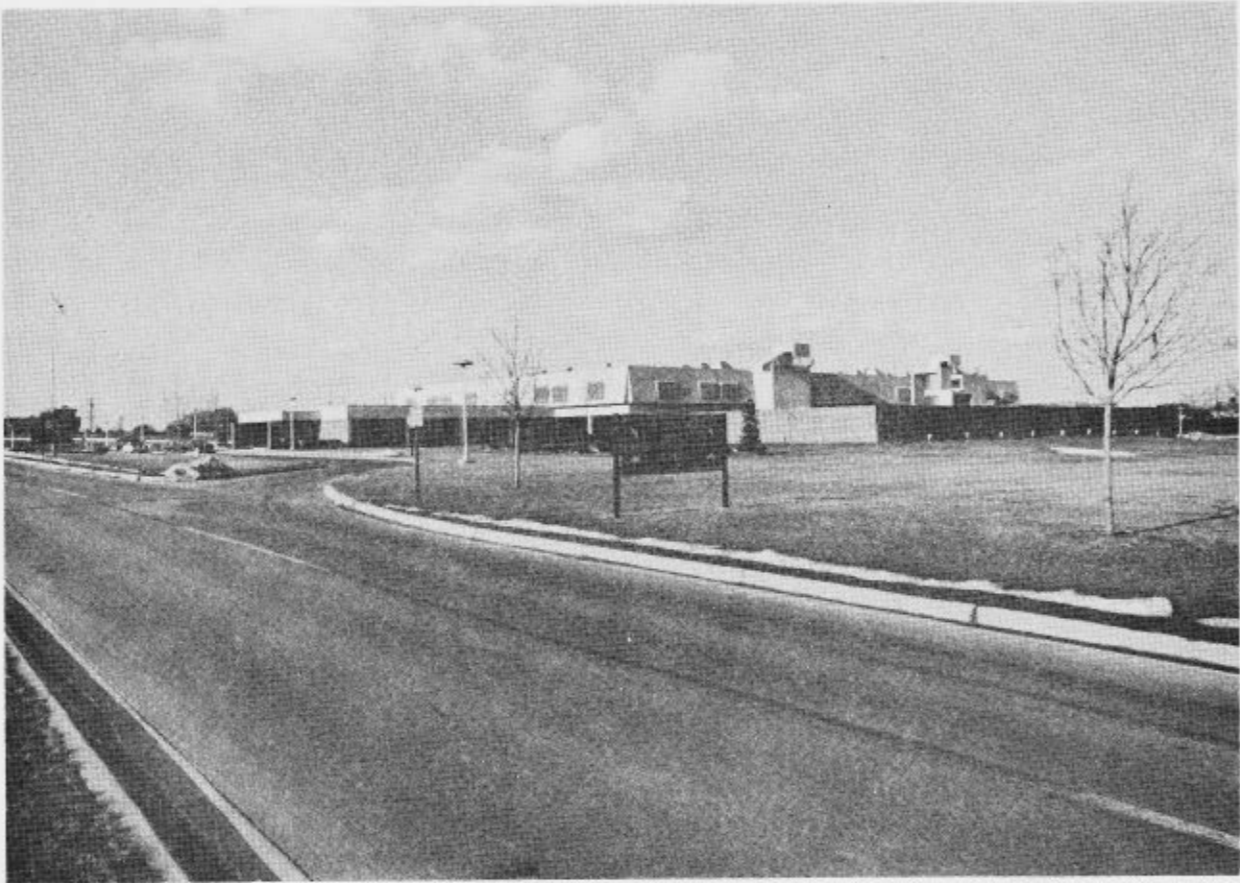
## OAKLAND COUNTY SHERIFF DEPARTMENT



R-  
OCDOC  
HV  
7979  
.02  
1974

SIS SECTION  
Services

JOHANNES F. SPREEN,  
Sheriff



IV  
7979  
.02  
1974

Law Enforcement Jail Complex of Oakland County, located in Pontiac, Michigan.



Johannes F. Spreen,  
Sheriff  
County of Oakland



Undersheriff John F. Nichols

An addition to the staff of the department this year was the appointment of John F. Nichols as Undersheriff. An extensive background in police work, both in practice and teaching, as well as his friendly demeanor, has gained him the respect of the people in the department. His military background, retired as an Army Reserve Lieutenant Colonel of Military Police in 1968, instills pride in accomplishment, as well as strict adherence to rules and regulations.

"WE ACCOMPLISHED MORE IN '74"

Subject:	Page:
Detectives to Det/Sgt. Specialization.....	39
Public Education:	
Public S.C.A.T. sessions .....	40
Tours and Talks .....	66
Prisoner Transportation Program .....	34
Inmate Learning Center .....	36
Increased Water Patrol .....	61
Bicycle Registration Program .....	45



Traffic Summary, O.C.S.D. ....	49	
Traffic Deaths, State Report .....	50	
Traffic Deaths, County Report .....	51	
Traffic Accident Summary .....	52-59	
Citations by Township .....	60	
Marine Division .....	61	
Marine Division, 1974 .....	62	
Snowmobile Program .....	63	
Posse Activity, 1974 .....	64	
IV	SPECIAL SERVICES	65
Lt. Billy J. Nolin		
Tours and Talks .....	66	
Civil Division, Annual Report .....	67-68	
Driver License Division .....	69	
Liquor Division Activity, 1974 .....	70-71	
V	TECHNICAL SERVICES	72
Lt. Lewis M. Doyle, Jr.		
L.E.I.N. Annual Report .....	73	
Identification Bureau .....	74	
Arson Investigation Report .....	75,76	
Patrol Services Training .....	77,78	
Firing Range Report .....	79	
Hunter Safety Program .....	80	
Property and Evidence Report .....	81	
Polygraph Report .....	82	
Crime Analysis Section: .....	83	
Annual Report, O.C.S.D. ....	84	
Traffic Accidents .....	85	
Monetary Loss .....	86	
Monetary Recovery .....	87	
Part I Crime, 1973 .....	88	
Part I Crime, 1974 .....	89	
Part I Crime, 4 year comparison .....	90	
Part I Crime Trend .....	91	
Murder Trend .....	92	
Rape Trend .....	93	
Robbery Trend .....	94	
Assault Trend .....	95	
Burglary Trend .....	96	
Larceny Trend .....	97	
Auto Theft Trend .....	98	
Law Enforcement Ratio Index .....	99	
Township Traffic Citations .....	100	
Township Activity, Year-end .....	101	
Townships under contract:		
Avon .....	102,103	
Commerce .....	104,105	
Highland .....	106,107	
Independence .....	108,109	
Oakland .....	110,111	
Orion .....	112,113	
Springfield .....	114,115	



1201 N. Telegraph Rd.      Pontiac, Mich. 48053  
Telephone 858-5000

Dear Fellow Citizens;

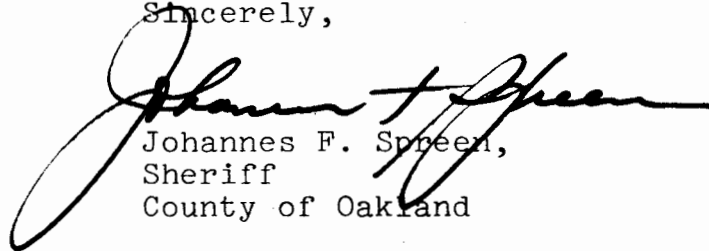
That "We Accomplished More in '74," is not only the theme of this annual report, but also the sentiments of the hard-working people within this department.

Camaraderie and high morale go hand in hand when uniformity of purpose is maintained throughout the department.

The attributes of the department have increased considerably, not only in the services offered, but also in the calibre of personnel, who are always seeking to improve themselves through additional training and education.

Although the year was marred by an increase in crime and criminal activity (following in line with the county and national increases), still, the dedication of the people of this department and their determination to provide the best possible protection for the people of Oakland County was evidenced by growing professionalism in the department.

Sincerely,



Johannes F. Spreen,  
Sheriff  
County of Oakland



## Personal appearances by the Sheriff

A public official's duties do not begin and end in his office.

There are many organizations and citizens groups interested in both hearing and assisting public officials, when possible.

These organizations can and do accomplish a great deal. A public official's ability to speak on subjects in his own area is very much in demand. During the year of 1974, Sheriff Spreen received 390 such requests.

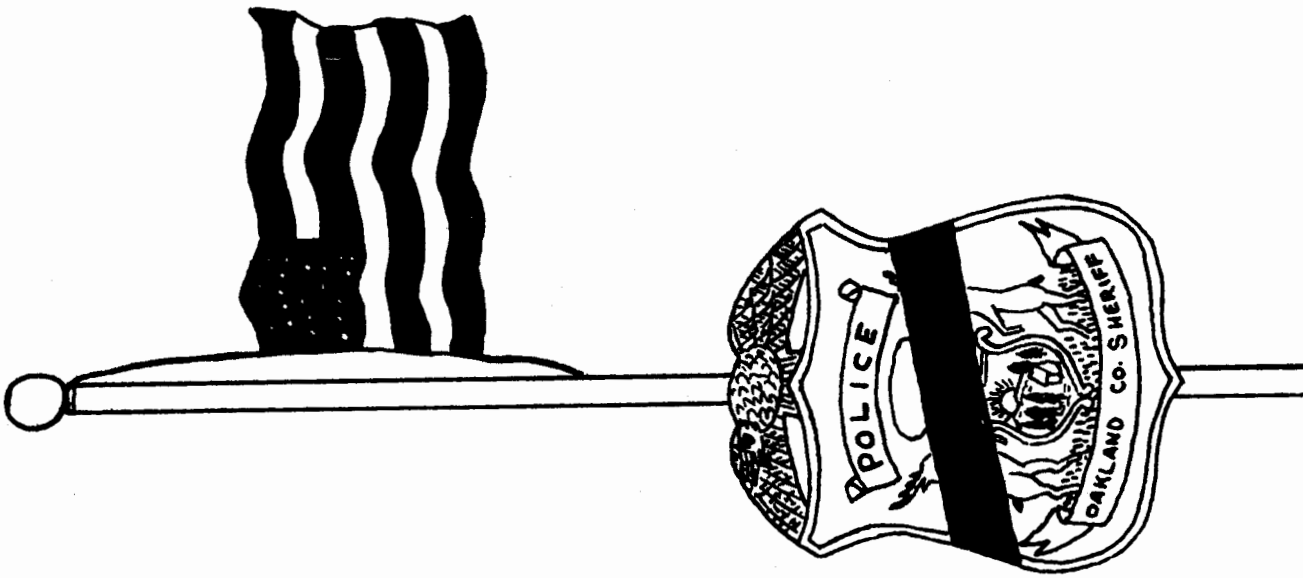
It is impossible, of course, to accept all invitations to speak. However, almost half of the invitations were accepted and led to a very busy schedule for the Sheriff and other Departmental representatives.



Deputy Jerry Hull was named officer of the year by Sheriff Johannes F. Spreen. "With the many fine people in this department choosing the most outstanding is a difficult task. We are very proud of Deputy Hull's performance and service to Oakland County," said Sheriff Spreen.

Deputy Hull, 28, of Avon Township has been in the department seven years. He is assigned to the road patrol and works out of the Avon Township substation.

"Deputy Hull's devotion to duty and his off-duty efforts are a tribute to the tradition of the Oakland County Sheriff's Department and its members," the Sheriff concluded.



IN MEMORIUM  
WEDNESDAY MAY 15, 1974

\*\*\*\*\*

Officer Henry R. Wolf, Oak Park P.D.  
age 27

May 21, 1973

Officer Martin D. Chivas, Troy P.D.  
age 23

April 22, 1974

Officer James Browning, Northland Security  
age 29

May 1, 1974

\*\*\*\*\*

*"They walk and work on the fingertip of Death.  
And some are clutched by that hand."*

National Anthem ..... Waterford Kettering  
Band Director .... George Fetter

Presentation of Colors

Invocation ..... Rev. Dennis Johnson

Welcome..... Richard Wilcox  
Chairman, Board of Commissioners

Address ..... Sgt. Jack Brown  
Ferndale Police  
State President, F.O.P.

Address ..... Johannes F. Spreen  
Sheriff, Oakland County

Honor Guard Ceremony..... Sheriff Dept.  
Honor Guard.

21 Gun Salute  
Taps  
Lowering of Colors to Half Staff

Benediction ..... Rev. Dennis Johnson

Closing Music ..... Waterford Kettering  
High School Band

COMMENDATIONS AND CITATIONS 1974

During the Highland Township Board Meeting, on August 15, 1974, Lance Thompson, 18 years old, was honored by the Township Board and the Oakland County Sheriff's Department.

Lance was cited for disregarding his own personal safety in apprehending a fleeing felon who had burglarized a home at 3550 Woodland, Highland, Michigan.

He is a graduate of Milford High School and will be attending the University of Michigan.

AWARDS AND RETIREMENT DINNER

On May 24, 1974, the Department held its Awards and Retirement Dinner. Nine officers received department citations and sixteen officers received letters of commendation.

FIRST ANNUAL CHRISTMAS PARTY

Officers from Avon Township held their first annual Christmas Party for underprivileged children from their area. The party was held on December 19, 1974.

SHERIFF

UNDERSHERIFF

LIEUTENANT  
SPECIAL  
SERVICES

LIEUTENANT  
ADMINISTRATIVE  
SERVICES

LIEUTENANT  
PROTECTIVE  
SERVICES

LIEUTENANT  
CORRECTIVE  
SERVICES

LIEUTENANT  
TECHNICAL  
SERVICES

FUNCTIONS:

Court Service  
(civil)  
Drivers License  
(Community Service)  
Governmental  
Liaison Officer  
Liquor Control  
Speakers Unit  
Jail Tours  
Complaints  
against staff

FUNCTIONS:

Personnel Hiring/  
Records  
Budget Preparation  
Equipment (office)  
Inventory Control  
Accounting,  
Payroll, Billing,  
Attendance  
Labor relations  
Purchasing  
Rules & Regs./  
Orders  
Review Depart.  
Plans, Policies  
Procedures

FUNCTIONS:

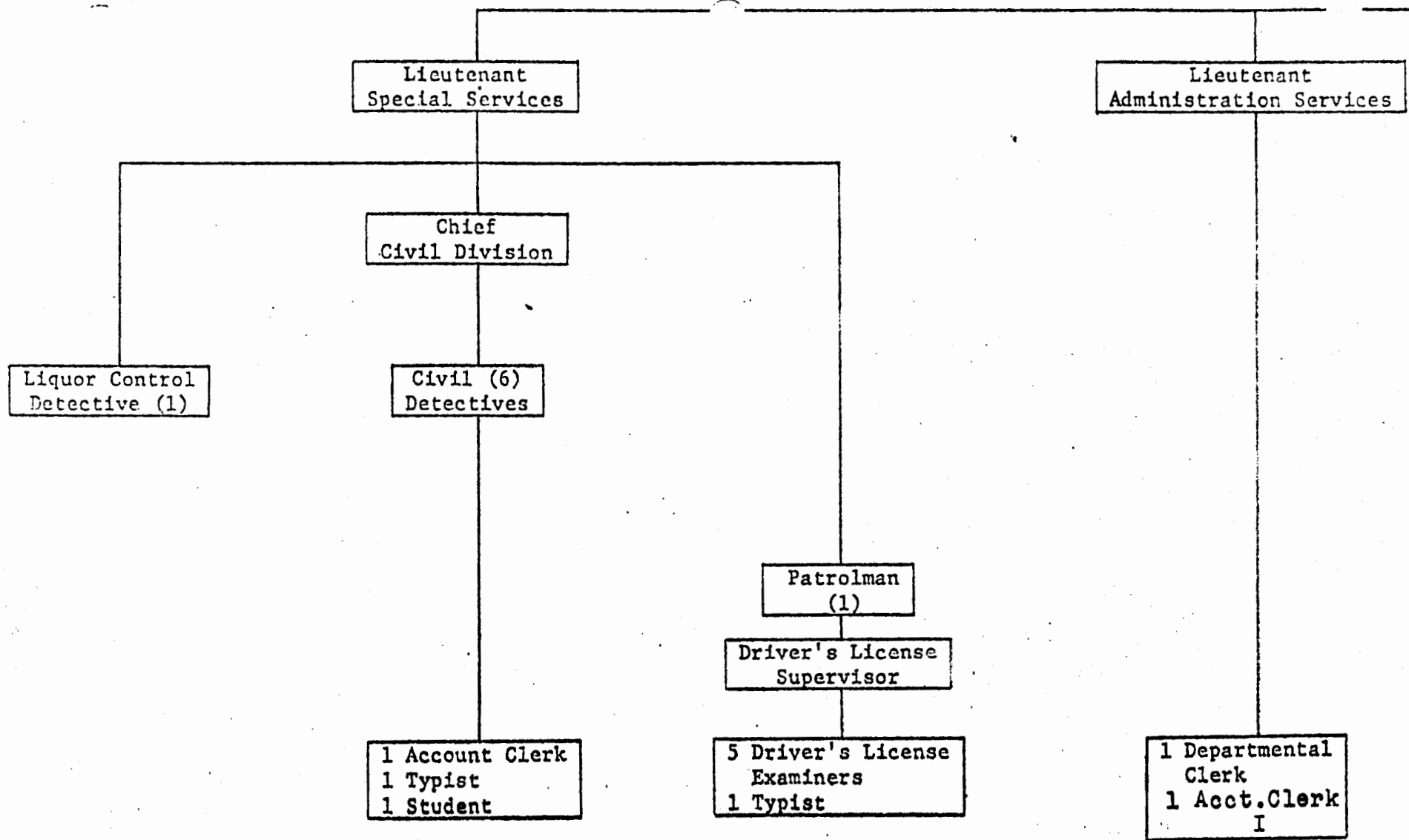
Road Patrol  
Criminal Invest.  
Supportive Opr.  
Coordination  
Marine/Snow-  
mobile Safety  
Traffic Safety  
Law Enforcement  
Service Contr.  
Public Info.

FUNCTIONS:

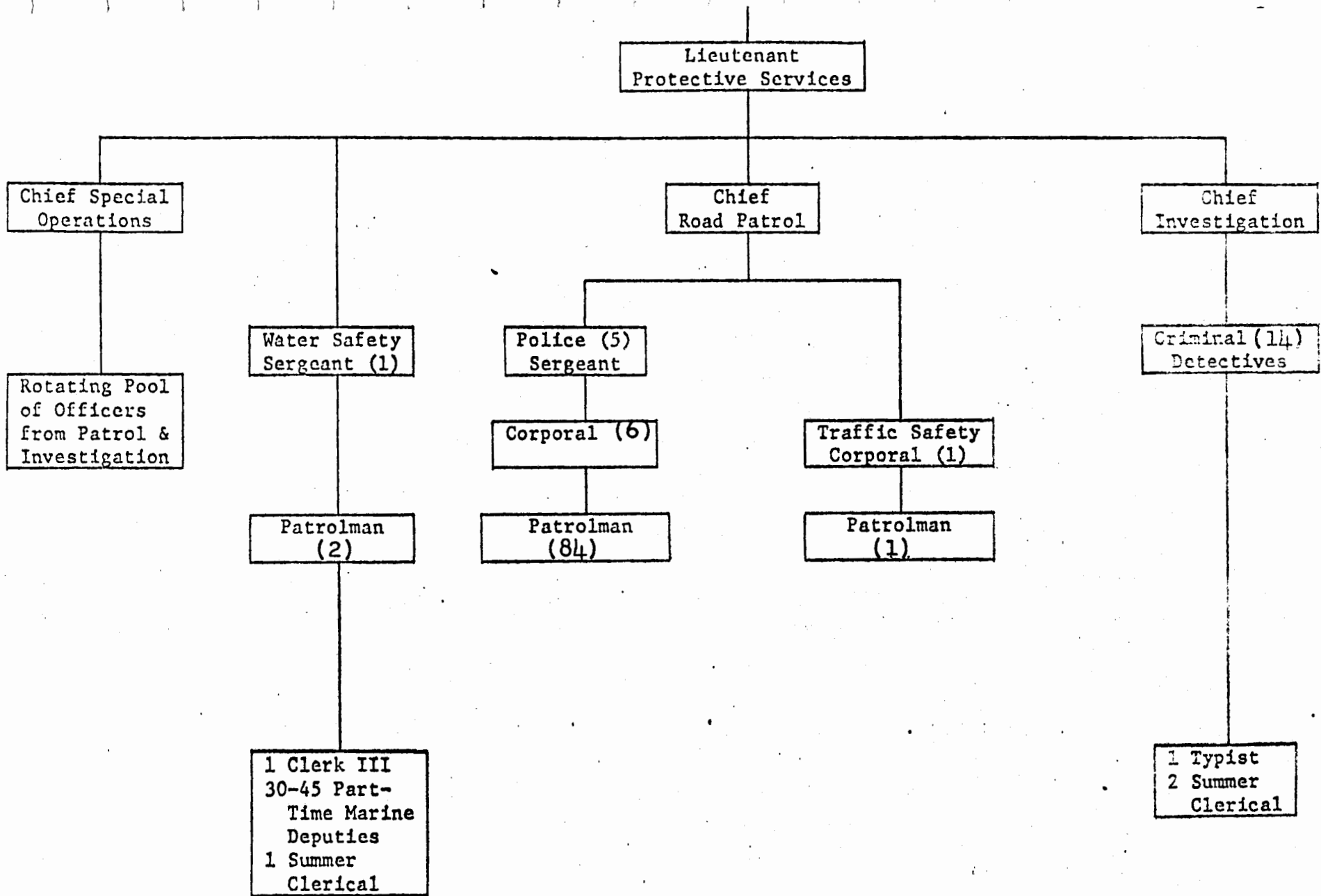
Detention  
Inmate Eval./  
Rehabilitation  
Circuit Court  
Det./Transfers  
Food Services  
Trusty Camp/  
County Work  
Infirmary  
Chapel  
Inmate Recrea.  
Prisoner Pickup  
Service

FUNCTIONS:

Communications  
Inmate (booking)  
Records/Billing  
Crime Lab./  
Identification  
Training  
Firearms/range  
Property/Evi-  
dence Control  
Data Process-  
ing/C.A.  
Hand-gun regis.  
Records/Reports  
Traffic Tickets  
Polygraph  
Chemist







Lieutenant  
Corrective Services

Chief  
Detention

Rehabilitation  
Sergeant (1)

Jail (1)  
Sergeant

Court Operation  
Corporal (1)

Jail  
Corporal (5)

Corrections  
Officer (7)

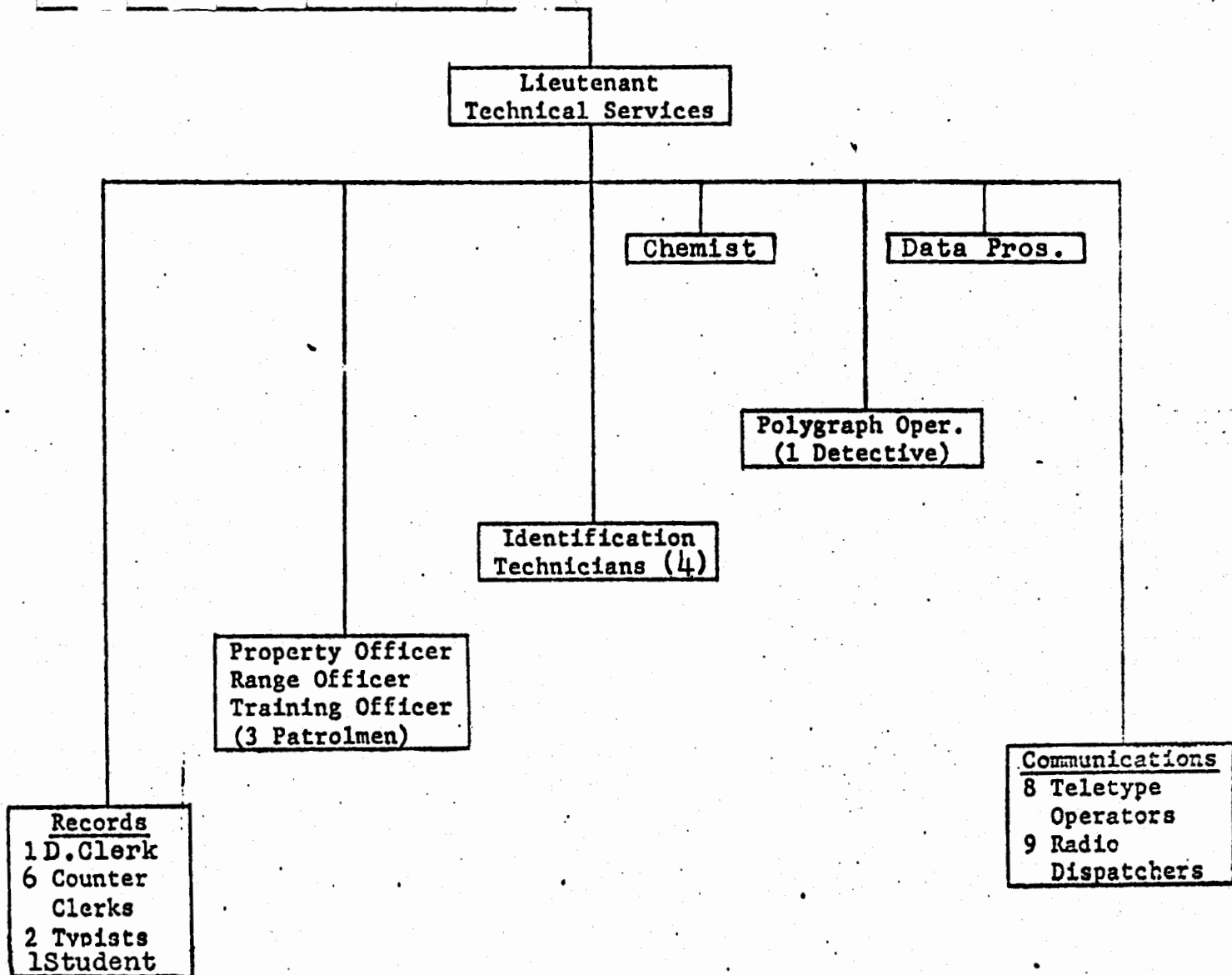
Corrections  
Officer (7)

Patrolman (5)

1 Maintenance  
Laborer  
2 Cooks

13 Detention  
Officers II  
5 Medical  
Dent. Officers  
47 Detention  
Officers I  
1 Food Service  
Supervisor  
6 Cooks

10



11

Administrative Services



Lt. Charles T. Whitlock

OAKLAND COUNTY SHERIFF DEPARTMENT  
PERSONNEL  
1974

ADMINISTRATION

Sheriff  
Undersheriff  
2-Typists (assigned to N.E.T.)  
2-Typists

ADMINISTRATIVE SERVICES:

1-Lieutenant  
1-Departmental clerk  
1-Account clerk (C.E.T.A.)

CORRECTIVE SERVICES:

1-Lieutenant  
  
Detention:  
1-Chief Detention Ofc.  
1-Sgt. corrections  
5-Corporals, corrections  
14-Corrections officers  
13-Detention officers  
5-Medical detention officers  
47-Detention officers I (6-C.E.T.A.)  
1-Food Services Spvr.  
3-First cooks  
3-Second cooks  
1-Temporary female det. ofc.  
1-Clerk III

Court Service:  
1-Corporal  
5-Patrolmen  
1-Corrections officer

Trusty Camp:  
6-Corrections officer  
1-Maintenance laborer  
2-First cooks

PROTECTIVE SERVICES:

1-Lieutenant  
  
Patrol:  
1-Chief  
5-Sgt.  
6-Corporals  
84-Patrolmen(2-Helicopter, 2-N.E.T., 1-Pros.Laison)  
(7-C.E.T.A.-contracted to townships)  
1-Typist

PROTECTIVE SERVICES, contd.

Traffic:

1-Corporal  
1-Patrolman

Marine:

1-Sgt.  
2-Patrolmen  
1-Clerk III  
1-Student  
7-Temporary marine deputies

S.O.C. (Supportive Operation Crew)

1-Chief  
2-Patrolmen

Investigations:

1-Chief  
14-Detective Sgts.  
1-Counter Clerk  
1-Typist  
1-Student

SPECIAL SERVICES:

1-Lieutenant

Civil Division:

1-Chief  
5-Detective Sgts.  
1-Patrolman  
2-Para-professionals (C.E.T.A.)  
1-Account clerk I  
2-Typists

Driver License Division:

1-Driver License Examiner, Spvr.  
4-Driver License Examiners

TECHNICAL SERVICES:

1-Lieutenant

Communications:

10-Radiodisperschers  
7.5-Teletype Operators

Identifications:

1-Chemist, crime lab.  
2-I.D. Technician II  
2-I.D. Technician I

TECHNICAL SERVICES, contd.

Polygraph:  
1-Detective Sgt.

Range:  
1-Patrolman

Property and Evidence:  
1-Patrolman

Training:  
0

Records:  
1-Departmental Clerk  
5-Counter Clerks  
1-Student

Crime Analysis (data processing):  
1-Counter Clerk  
2-Typists

The following vacancies existed at the close of the year:

Vacancies existing positions:	New promotional vacancies:
1 - Account Clerk (C.E.T.A.)	1 - Sgt. Corrections
1 - Medical Detention ofc.	1 - Corrections officer
1 - Detention officer	1 - Sgt. Rehabilitation (trusty camp)
6 - Detention officer (C.E.T.A.)	1 - Detective Sgt.
2 - Para-professionals (C.E.T.A.)	<u>4</u>
3 - Patrolmen	
<u>7</u> - Patrolmen (C.E.T.A. contracts)	

21

OVERTIME HOURS EARNED

1974

Administrative Offices .....	\$	238.05
Administrative Services.....		647.84
Corrective Services.....		293,171.46
Protective Services.....		310,054.93
Special Services.....		17,020.95
Technical Services.....		<u>49,834.04</u>
TOTAL	\$	670,967.27



OVERTIME HOURS EARNED  
(breakdown)  
1974

Teletype, Dispatchers.....	\$ 28,105.50
Identification.....	11,320.32
Polygraph.....	2,032.86
Property.....	839.35
Range.....	3,244.88
Records.....	2,124.85
Training.....	2,166.28
Court Officers.....	16,479.43
Corrections, includes cooks.....	237,960.35
Administration.....	238.05
Investigations.....	59,954.35
Liquor.....	4,229.81
Drivers License.....	754.55
Civil.....	12,036.59
Administrative services.....	647.84
Patrol.....	241,236.84
Marine.....	8,863.74
Trusty Camp, includes cooks.....	<u>38,731.68</u>
TOTAL	\$ 670,967.27

Function: Public Safety

SHERIFF	1972	1973	1973	1974
Expenditure Classification	Actual	Budget	6 Months Actual	Budget
SALARIES (Includes Salaries Reserve)	2,263,085	2,439,550	1,518,133	3,038,093
PERSONAL SERVICES	22,755	---	5,365	---
CONTRACTUAL SERVICES	414,691	615,575	336,377	700,200
COMMODITIES	214,218	182,700	116,576	229,500
TOTAL BUDGET	2,914,749	3,237,825	1,976,451	3,967,790
CAPITAL OUTLAY	1,124	2,500	909	22,100
TOTAL BUDGET & CAPITAL OUTLAY	2,915,873	3,240,325	1,977,360	3,989,890

SHERIFF

Expenditure Classification	1972 Actual	1973 Budget	1973 6 Months Actual	1974 Budget
SALARIES	2,263,085	2,439,550	1,518,133	2,907,993
Salaries Reserve	---	---	---	130,100
<u>PERSONAL SERVICES</u>				
Medical Services - Physicians	22,755	---	5,365	---
<u>CONTRACTUAL SERVICES</u>				
Advertising	547	300	392	700
Communications	24,502	19,000	13,011	23,000
Custodial Services	6,231	61,000	35,563	75,000
Data Processing	10,974	3,000	1,421	18,000
Elevator Maintenance	1,869	3,600	180	3,900
Employees' In-Service Training	1,322	1,600	1,642	5,000
Equipment Rental	7,929	7,625	5,080	13,000
Equipment Repairs & Maintenance	995	1,000	3,503	4,000
Exterminating Expense	259	500	199	500
Garbage & Rubbish Disposal	---	---	500	---
Heat, Lights, Gas and Water	81,330	198,000	96,899	204,000
Hospitalization	1,809	2,000	364	1,000
Laundry, Cleaning and Renovating	15,870	18,000	10,422	22,000
Maintenance Department Charges	5,043	1,000	2,556	6,000
Memberships, Dues and Publications	184	650	315	1,000
Miscellaneous	1,830	1,500	873	1,500
N. E. T.	12,500	12,500	12,500	12,500
North Oakland Sub-Station	2,557	2,500	1,354	2,800
Radio Rental	25,889	24,000	9,433	35,900
Rent	8,026	---	---	---
Security Expense	709	---	---	---
Snowmobile Program	---	5,000	1,510	5,000

## SHERIFF

Expenditure Classification	1972 Actual	1973 Budget	1973 6 Months Actual	1974 Budget
CONTRACTUAL SERVICES - (Continued)				
Transportation	200,729	250,000	135,823	261,000
Transportation of prisoners	551	800	467	900
Travel and Conference	3,036	2,000	2,327	3,500
Window Cleaning	---	---	43	---
<u>COMMODITIES</u>				
Bedding and Linen	698	1,000	1,765	3,500
Culinary Supplies	607	1,000	958	1,300
Deputies Supplies	8,152	5,000	3,939	7,000
Deputies Uniform Expense	38,443	25,000	13,352	26,000
Dry Goods and Clothing	6,960	3,000	1,260	5,000
Electrical Maintenance	---	2,000	---	---
Fingerprint and Photographic Supplies	3,080	2,500	1,877	3,000
Housekeeping Expense	14,344	13,000	8,592	17,000
Liquor and Gambling Expense	---	1,000	274	1,000
Medical Supplies & Expense	15,573	15,000	9,748	21,000
Microfilming and Reproductions	27	---	211	500
Office Supplies	17,845	13,000	12,184	23,000
Provisions	87,915	85,000	51,344	105,000
Small Tools	114	---	---	---
Toilet Articles	1,116	1,200	741	1,200
Uniform Cleaning	<u>19,344</u>	<u>15,000</u>	<u>10,331</u>	<u>15,000</u>
TOTAL OPERATING BUDGET	651,664	798,275	458,318	929,700

Function: Public Safety

Subject: Marine Safety

Expenditure Classification	1972 Actual	1973 Budget	1973 6 Months Actual	1974 Budget
SALARIES (Includes Reserve)	73,258	72,700	37,205	72,200
PERSONAL SERVICES	30,958	38,500	7,619	41,000
CONTRACTUAL SERVICES	19,131	18,800	4,399	18,800
COMMODITIES	2,393	2,750	928	2,750
HELICOPTER	8,996	16,515	6,085	16,515
TOTAL BUDGET	134,736	149,265	56,236	151,265
CAPITAL OUTLAY	26,053	14,500	9,851	12,500
TOTAL BUDGET & CAPITAL OUTLAY	160,789	163,765	66,087	163,765

SHERIFF  
MARINE SAFETY

Expenditure Classification	1972 Actual	1973 Budget	1973 6 Months Actual	1974 Budget
SALARIES	62,664	60,200	31,986	61,657
Salaries Reserve	10,594	12,500	5,219	10,543
<u>PERSONAL SERVICES</u>				
Boat Safety Instructors	2,440	2,500	1,358	2,500
Coho Patrol	2,290	2,000	---	2,000
Marine Patrol	25,431	30,000	6,032	32,500
Recovery of Drowned Bodies	797	4,000	229	4,000
<u>CAPITAL OUTLAY</u>				
Boats	24,747	11,000	9,088	9,000
Marine Equipment	1,306	3,500	389	3,500
Office Furniture	---	---	374	---
<u>CONTRACTUAL SERVICES</u>				
Boat Rental	---	---	42	---
Building Maintenance Charges	82	200	---	200
Communications	553	600	173	600
Equipment Rental	375	250	215	250
Equipment Repairs and Maintenance - Marine	4,753	5,400	289	5,400
Garbage and Rubbish Disposal	83	150	---	150
Grounds Maintenance	111	200	---	200
Heat, Lights, Gas and Water	284	450	---	450
Insurance	1,722	1,600	891	1,600
Miscellaneous	167	100	18	100
Radio Rental	1,961	1,800	516	1,800
Transportation	7,909	7,500	1,858	7,500
Travel and Conference	1,131	550	397	550

SHERIFF  
MARINE SAFETY

Expenditure Classification	1972 Actual	1973 Budget	1973 6 Months Actual	1974 Budget
<u>COMMODITIES</u>				
Deputy Uniform Expense	641	500	460	500
Diving Supplies	812	1,000	84	1,000
Dry Goods and Clothing	161	500	---	500
Medical Supplies	---	150	104	150
Office Supplies	585	400	85	400
Photography Supplies and Expense	60	200	195	200
Small Tools	134	---	---	---
<u>HELICOPTER</u>				
Salaries	211	3,515	235	3,515
Communications	188	200	122	200
Dry Goods and Clothing	---	---	41	---
Equipment Repairs and Maintenance	3,573	7,200	3,840	7,200
Equipment, New	---	---	400	---
Insurance	1,938	2,000	---	2,000
Membership and Dues	---	---	36	---
Miscellaneous	23	100	38	100
Rent	980	1,000	600	1,000
Small Tools	---	---	34	---
Transportation	1,632	2,000	547	2,000
Travel and Conference	<u>451</u>	<u>500</u>	<u>192</u>	<u>500</u>
TOTAL OPERATING BUDGET	160,789	163,765	66,087	163,765

Function: Public Safety  
 Subject: Trusty Camp

Expenditure Classification	1972 Actual	1973 Budget	1973 6 Months Actual	1974 Budget
SALARIES (Includes Reserve)	134,618	121,735	76,024	131,371
PERSONAL SERVICES	72	300	30	---
CONTRACTUAL SERVICES	8,628	12,100	9,770	9,000
COMMODITIES	24,007	30,650	5,795	29,900
TOTAL BUDGET	167,325	164,785	91,619	170,271
CAPITAL OUTLAY	6,378	1,000	---	800
TOTAL BUDGET & CAPITAL OUTLAY	173,703	165,785	91,619	171,071



SHERIFF  
TRUSTY CAMP

Expenditure Classification	1972 Actual	1973 Budget	1973 6 Months Actual	1974 Budget
SALARIES	134,618	121,735	76,024	129,071
Salaries Reserve	---	---	---	2,300
<u>PERSONAL SERVICES</u>				
Physicians	72	300	30	---
<u>CONTRACTUAL SERVICES</u>				
Building Alterations	352	1,500	---	---
Building Maintenance	1,260	1,500	---	---
Communications	604	600	313	650
Custodial Services	48	---	9	---
Equipment Repairs and Maintenance	726	800	477	800
Exterminating Expense	---	100	---	100
Garbage & Rubbish Disposal	833	700	250	900
Heat, Lights, Gas and Water	5,751	5,000	8,137	6,000
Maintenance Dept. Charges	---	200	---	100
Maintenance Supplies	---	---	---	---
Miscellaneous	538	200	463	200
Transportation	128	4,500	121	250
<u>COMMODITIES</u>				
Bedding and Linen	92	200	---	400
Culinary Supplies	82	100	---	---
Culinary Equipment Repair	---	---	10	---
Deputies Supplies	18	---	---	---
Deputies Uniform Expense	100	---	---	---
Dry Goods and Clothing	2,122	2,200	8	2,200
Electrical Supplies	72	50	10	200
Housekeeping and Janitor Supplies	3,363	4,000	588	4,000
Medical Supplies and Expense	143	200	1	200
Office Supplies	83	150	25	150

SHERIFF  
TRUSTY CAMP

Expenditure Classification	1972 Actual	1973 Budget	1973 6 Months Actual	1974 Budget
<u>COMMODITIES (Continued)</u>				
Provisions	16,780	21,500	5,153	21,500
Small Tools	1,058	2,000	---	1,000
Toilet Articles	<u>94</u>	<u>250</u>	<u>---</u>	<u>250</u>
TOTAL OPERATING BUDGET	32,707	43,050	15,595	38,900

OAKLAND COUNTY SHERIFF' DEPARTMENT  
RECEIPTS

	1973	1974
Prisoner board and care.....	\$ 282,229.75	\$ 572,119.28*
Hunter-safety classes.....	84.00	178.00
Restitution for damage by prisoners	.00	293.97
Prisoner transfers (state).....	2,474.86	2,556.72
Boat Livery.....	921.90	932.00
Pay phone commission.....	296.30	307.64
Commissary funds.....	.00	118,786.13
Auction sale.....	2,026.35	2,949.45
Photostats.....	7,988.50	7,451.00
Evidence, found property.....	49.71	191.81
Gun registrations.....	1,918.00	2,016.00
Fingerprints .....	919.00	1,422.00
Subpoena fees .....	7.00	220.00
Teletypes (driver licenses).....	2,264.00	1,861.00
Meal tickets.....	25.00	0.00
Abandoned auto sales.....	437.46	0.00
Unclaimed inmate funds.....	792.50	0.00
Badge payment.....	15.00	0.00
	\$ 302,473.85	\$ 711,285.00

\* \$355,276.00 of this amount is the result of board and care of Federal inmates and includes \$21,357.25 from the Department of Immigration and Naturalization Service.

Disbursements:

Expenditures from Petty Cash..... \$ 3,158.93

Petty cash disbursements are for meals eaten out of county during prisoner transfers, locks, keys, and other minor expenditures less than \$25.00 that are ordinarily chargeable to a budget line item.

Corrective Services.....

Departmental Statistics;

During the year of 1974 the total number of inmates received at the Jail Complex was 17,329, an increase over the previous year of 1,461. With a jail capacity of 480, 434 male, 46 female, the highest daily inmate count reached 550 males, 55 females, indicating maximum design capacity was exceeded on occasion.

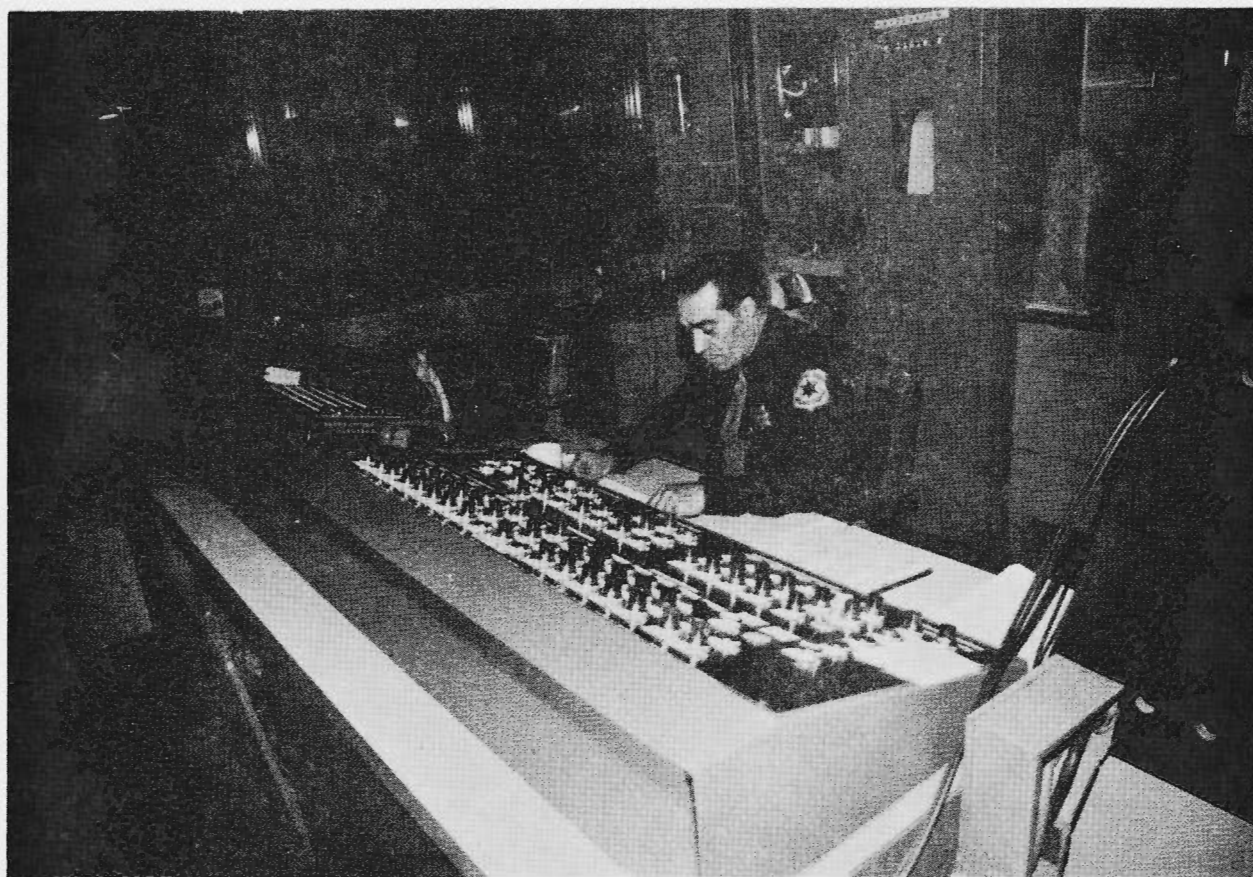
As requested by the Federal District Courts we housed their inmates on a short term basis, usually pre-arraignment and persons on trial. 1630 Federal inmates were housed at the jail, as well as 298 inmates for the Department of Immigration and Naturalization.

A total of 205 inmates were confined to the Trusty Camp, a minimum security environment, where education and rehabilitation is continued.

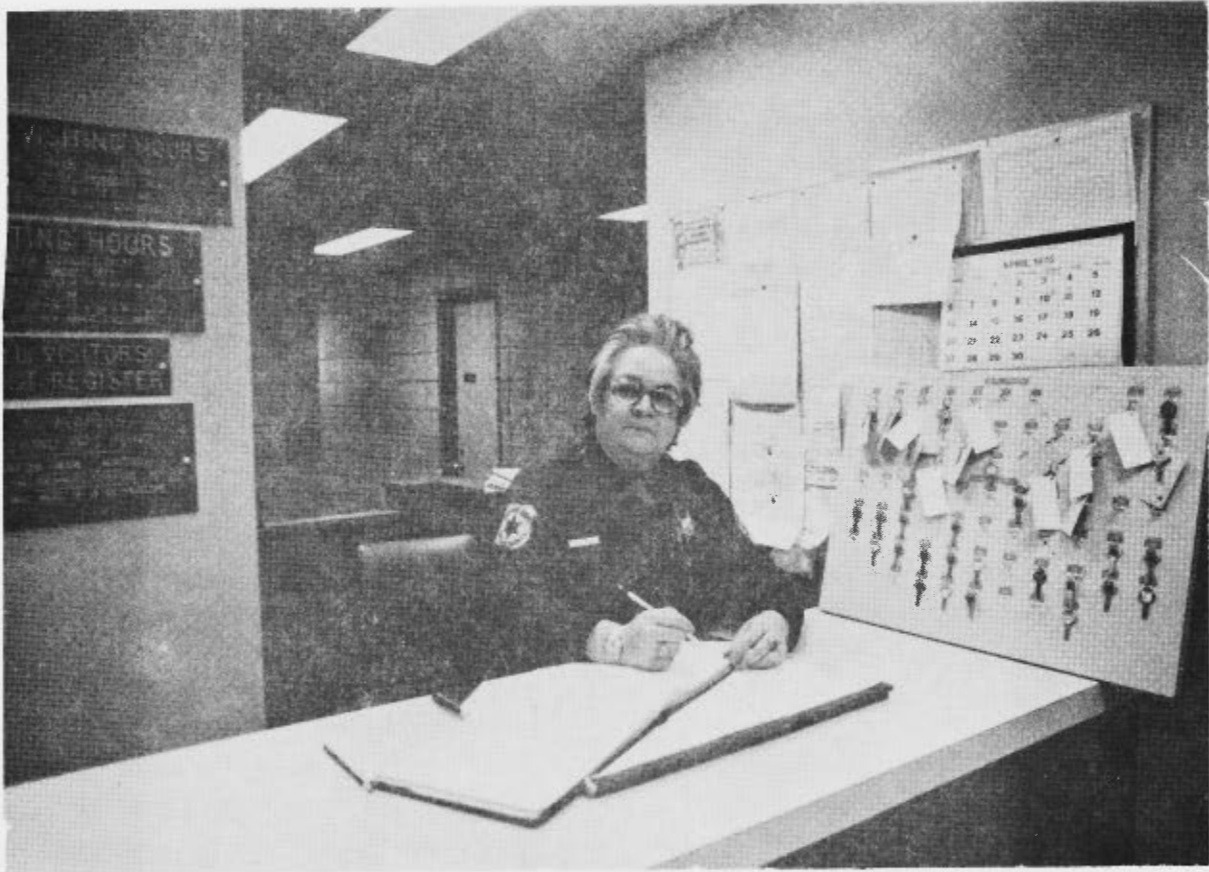
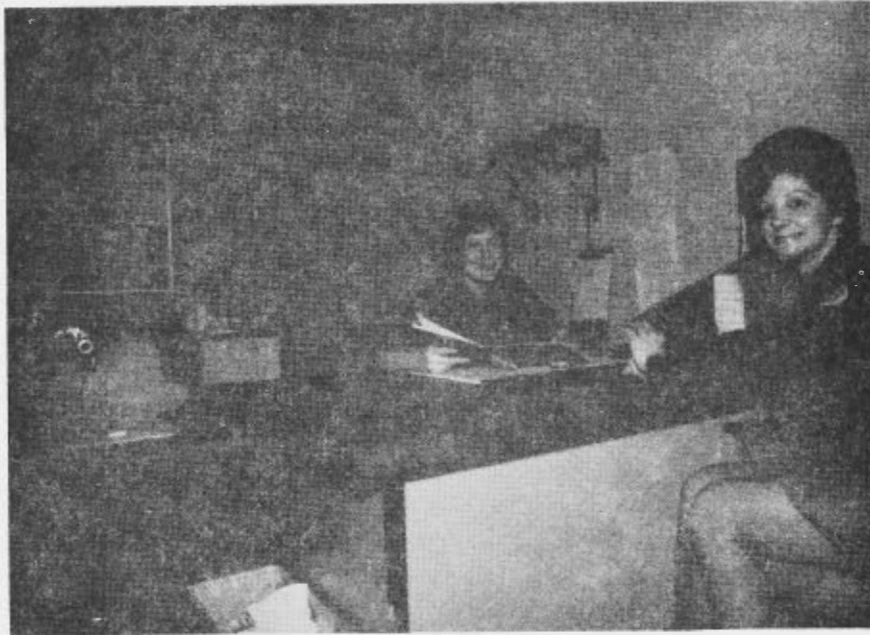
Additional reports covering other phases of corrections can be found within this section.

Lt. Harry H. Jones

Lt. Harry Jones (top), and Officer Joe Duran (bottom)  
working the Master Control Room in the Jail Complex.



Matrons Susan Blackmer, left and Lorraine Schneuringer (top picture).  
Barbara George (bottom picture) working the visiting desk.



JAIL POPULATION FACTOR

Prisoner daily count (m & f)	LO-233	Hi-342
Jail Capacity	f-23	m-289
Yearly Total	f-1,044	m-11,680
**1971**		
Prisoner daily count (m & f)	Lo-242	Hi-361
Jail Capacity	f-23	m-289
Yearly Total	f-1,059	m-12,270
**1972**		
Prisoner daily count (m & f)	Lo-246	Hi-543
Jail Capacity	f-46	m-434
Yearly Total	f-1,479	m-14,389
**1973**		
Prisoner daily count (m & f)	Lo-386	Hi-605
Jail Capacity	f-46	m-434
Yearly Total	f-1,615	m-15,814
**1974**		

YEAR END REPORT - 1974  
 OAKLAND COUNTY JAIL COMPLEX  
 CORRECTIONS

	<u>1973</u>	<u>1974*</u>
Jail Capacity	480	480
male	434	434
female	46	46
Prisoners Admitted	15,868	17,329
male	14,123	15,814
female	1,444	1,615
Prisoner Count (high-low)		
male	497-236	550-361
female	46-10	55-25
Total prisoner days	145,953	176,683
Total transfer of prisoners	4,754	5,283
* Included in above (1974)		
Federal prisoners admitted		1,630
Federal prisoners released		1,654
Daily average Federal prisoners		111
Immigration prisoners admitted		298
Immigration prisoners released		310
Daily average Immigration prisoners		4.5
Daily average at Trusty Camp		29



## COURT SERVICE ACTIVITY

Total prisoners transported to court	5,698
male	5,341
female	357
Court appearances	4,458
Prisoners to S.P.S.M. and Dehoco	393
Prisoners to Forensic Center	135
Prisoners picked up for courts	297
Prisoners returned from courts	185
Miles driven for prisoner transportation	47,865
Special Probate Court and Forensic Center trips	4
Man hours used for special probate	64
Miles driven for probate trips	1,200
Road Patrol man hours used	690
Matron hours used	612

YEARLY ACTIVITY REPORT - 1974

COURT SERVICE OFFICERS

TRANSPORTATION OF PRISONERS

MONTH	TRIPS	MILES	MALES	FEMALES	COURT APP.	FORENSIC CENTER	MAN HOURS	MATRON HOURS	WRIT PICKUP	WRIT RETURN
Jan.	33	4,400	458	32	335	5	316	46	28	14
Feb.	29	3,950	364	34	303	5	246	76	25	17
March	30	4,200	497	25	434	21	484	52	24	13
April	29	4,400	510	21	472	16	380	60	21	14
May	35	3,775	500	33	459	2	132	44	23	33
June	28	3,000	401	14	293	18	70	30	17	12
July	34	3,225	322	16	287	10	36	14	20	8
Aug.	36	5,030	380	26	282	14	16	56	26	21
Sept.	29	3,750	456	32	382	13	44	42	28	7
Oct.	33	4,300	505	35	389	6	76	50	33	28
Nov.	23	3,180	444	44	402	5	98	56	33	28
Dec.	<u>27</u>	<u>4,650</u>	<u>504</u>	<u>45</u>	<u>420</u>	<u>12</u>	<u>80</u>	<u>86</u>	<u>18</u>	<u>9</u>
TOTAL	366	47,865	5,341	357	4,458	127	1,978	612	296	204

Respectfully submitted,

*Robert Macfarlane*  
Cpl. Robert Macfarlane

COURT SERVICE TRANSPORTATION

Location:	Trips:
Forensic Center	77
S.P.S.M.	74
Dehoco	62
Macomb County	26
Wayne County	41
Ionia	11
Roscommon County	2
Detroit Area	30
St. Clair County	4
Washtanaw County	7
Marquette	3
Leavenworth, Kansas	1
Eaton County	1
Genessee County	4
Lapeer County	7
Camp Maxey	9
Grayling	4
Bay County	1
Ingham County	1
Calhoun County	1
	<hr/>
Total trips	366
Miles driven	47,865

PRISONER TRANSPORT PROGRAM \*

(total miles driven)

June	1,569
July	2,147
August	2,510
September	2,075
October	2,488
November	2,650
December	<u>2,707</u>
Total	16,146

\*

This program was instituted on June 10, 1974 by this department as a service to all police agencies in Oakland County. Prisoners are transported daily to and from police agencies within the County, thereby eliminating the necessity of each department furnishing individual transportation.

A breakdown by individual departments are on the following pages.

34-1

<u>BERKLEY</u>	JUNE (start 6-10-74)	JULY	AUGUST	SEPTEMBER	OCTOBER	NOVEMBER	DECEMBER	TOTAL
TOTAL MEN TRANSPORTED	1	1	2	0	1	4	4	13
TOTAL WOMEN TRANSPORTED	0	0	0	0	0	0	0	0
TOTAL MEN PICKED UP	0	3	4	0	0	7	6	20
TOTAL WOMEN PICKED UP	0	1	0	0	0	0	0	1
TOTAL INDIVIDUALS TRANSPORTED	1	5	6	0	1	11	10	34
TOTAL INDIVIDUAL TRIPS	1	4	5	0	1	6	9	26
TOTAL MILES	13	52	65	0	13	78	117	338

13

MILES TO STATION

<u>BIRMINGHAM</u>	JUNE (start 6-10-74)	JULY	AUGUST	SEPTEMBER	OCTOBER	NOVEMBER	DECEMBER	TOTAL
TOTAL MEN TRANSPORTED	0	0	1	3	2	3	4	13
TOTAL WOMEN TRANSPORTED	0	0	1	3	1	2	0	7
TOTAL MEN PICKED UP	0	2	2	2	7	1	3	17
TOTAL WOMEN PICKED UP	0	1	2	1	1	0	1	6
TOTAL INDIVIDUALS TRANSPORTED	0	3	6	9	11	6	8	43
TOTAL INDIVIDUAL TRIPS	0	3	5	5	10	4	5	32
TOTAL MILES	0	33	55	55	110	44	55	352

34-2

<u>FARMINGTON CITY</u>	JUNE (start 6-10-74)	JULY	AUGUST	SEPTEMBER	OCTOBER	NOVEMBER	DECEMBER	TOTAL
TOTAL MEN TRANSPORTED	0	3	1	0	0	1	2	7
TOTAL WOMEN TRANSPORTED	0	0	0	0	0	0	0	0
TOTAL MEN PICKED UP	1	3	1	0	0	3	0	8
TOTAL WOMEN PICKED UP	0	1	0	0	0	2	0	3
TOTAL INDIVIDUALS TRANSPORTED	1	7	2	0	0	6	2	18
TOTAL INDIVIDUAL TRIPS	1	6	2	0	0	3	2	14
TOTAL MILES	19	114	38	0	0	57	38	266

34-3

34-4

<u>FARMINGTON HILLS</u>	JUNE (start 6-10-74)	JULY	AUGUST	SEPTEMBER	OCTOBER	NOVEMBER	DECEMBER	TOTAL
TOTAL MEN TRANSPORTED	0	4	5	1	7	7	3	27
TOTAL WOMEN TRANSPORTED	0	0	1	0	0	0	0	1
TOTAL MEN PICKED UP	2	7	13	4	10	9	5	50
TOTAL WOMEN PICKED UP	0	0	0	0	1	0	0	1
TOTAL INDIVIDUALS TRANSPORTED	2	11	19	5	18	16	8	79
TOTAL INDIVIDUAL TRIPS	1	5	15	4	10	11	8	54
TOTAL MILES	15	75	225	60	150	165	130	810

15

MILES TO STATION



34-5

<u>FERNDALE</u>	JUNE (start 6-10-74)	JULY	AUGUST	SEPTEMBER	OCTOBER	NOVEMBER	DECEMBER	TOTAL
TOTAL MEN TRANSPORTED	0	0	6	10	10	17	11	54
TOTAL WOMEN TRANSPORTED	0	0	3	6	2	1	1	13
TOTAL MEN PICKED UP	0	0	20	13	13	23	20	89
TOTAL WOMEN PICKED UP	0	0	4	3	2	2	1	12
TOTAL INDIVIDUALS TRANSPORTED	0	0	33	32	27	43	33	168
TOTAL INDIVIDUAL TRIPS	0	0	14	13	14	14	18	73
TOTAL MILES	0	0	350	325	350	350	450	1,825

25

MILES TO STATION

34-6

<u>HAZEL PARK</u>	JUNE (start 6-10-74)	JULY	AUGUST	SEPTEMBER	OCTOBER	NOVEMBER	DECEMBER	TOTAL
TOTAL MEN TRANSPORTED	8	11	4	5	5	3	8	44
TOTAL WOMEN TRANSPORTED	2	5	2	0	4	7	0	20
TOTAL MEN PICKED UP	22	12	10	9	16	8	23	100
TOTAL WOMEN PICKED UP	4	3	1	0	0	3	3	14
TOTAL INDIVIDUALS TRANSPORTED	36	31	17	14	25	21	34	178
TOTAL INDIVIDUAL TRIPS	19	13	10	10	18	11	18	99
TOTAL MILES	437	299	230	230	414	253	414	2,277

23

MILES TO STATION

HUNTINGTON WOODS	JUNE (start 6-10-74)	JULY	AUGUST	SEPTEMBER	OCTOBER	NOVEMBER	DECEMBER	TOTAL
TOTAL MEN TRANSPORTED	0	2	5	0	0	0	1	8
TOTAL WOMEN TRANSPORTED	0	0	0	0	0	0	0	0
TOTAL MEN PICKED UP	3	1	6	2	0	2	0	14
TOTAL WOMEN PICKED UP	0	0	0	0	0	0	0	0
TOTAL INDIVIDUALS TRANSPORTED	3	3	11	2	0	2	1	22
TOTAL INDIVIDUAL TRIPS	1	2	5	2	0	1	1	12
TOTAL MILES	14	28	70	28	0	14	14	168

<u>MADISON HEIGHTS</u>	JUNE (start 6-10-74)	JULY	AUGUST	SEPTEMBER	OCTOBER	NOVEMBER	DECEMBER	TOTAL
TOTAL MEN TRANSPORTED	1	12	0	3	1	3	1	21
TOTAL WOMEN TRANSPORTED	1	0	0	0	0	2	2	5
TOTAL MEN PICKED UP	1	26	4	4	8	9	9	61
TOTAL WOMEN PICKED UP	1	1	0	0	1	1	6	10
TOTAL INDIVIDUALS TRANSPORTED	4	39	4	7	10	15	18	97
TOTAL INDIVIDUAL TRIPS	4	12	3	3	5	7	11	45
TOTAL MILES	68	204	51	51	85	119	187	765

34-8

34-9

<u>NOVI</u>	JUNE (start 6-10-74)	JULY	AUGUST	SEPTEMBER	OCTOBER	NOVEMBER	DECEMBER	TOTAL
TOTAL MEN TRANSPORTED	1	7	2	6	2	4	3	25
TOTAL WOMEN TRANSPORTED	0	0	0	0	0	2	0	2
TOTAL MEN PICKED UP	0	12	2	5	3	0	1	23
TOTAL WOMEN PICKED UP	0	0	0	0	0	0	0	0
TOTAL INDIVIDUALS TRANSPORTED	1	19	4	11	5	6	4	50
TOTAL INDIVIDUAL TRIPS	1	11	3	9	5	4	3	36
TOTAL MILES	19	209	57	171	95	76	57	684

19

MILES TO STATION

<u>OAK PARK</u>	JUNE (start 6-10-74)	JULY	AUGUST	SEPTEMBER	OCTOBER	NOVEMBER	DECEMBER	TOTAL
TOTAL MEN TRANSPORTED	3	5	7	8	7	9	3	42
TOTAL WOMEN TRANSPORTED	0	0	0	0	0	1	0	1
TOTAL MEN PICKED UP	9	11	14	12	13	17	10	86
TOTAL WOMEN PICKED UP	0	0	0	1	1	1	1	4
TOTAL INDIVIDUALS TRANSPORTED	12	16	21	21	21	28	14	133
TOTAL INDIVIDUAL TRIPS	8	10	16	11	9	18	9	81
TOTAL MILES	136	170	272	187	153	306	153	1,377

\_\_\_\_\_ MILES TO STATION

34-11

<u>CITY OF ROYAL OAK</u>	JUNE (start 6-10-74)	JULY	AUGUST	SEPTEMBER	OCTOBER	NOVEMBER	DECEMBER	TOTAL
TOTAL MEN TRANSPORTED	2	6	6	1	12	8	13	48
TOTAL WOMEN TRANSPORTED	1	3	2	1	3	5	2	17
TOTAL MEN PICKED UP	6	10	9	11	20	7	18	81
TOTAL WOMEN PICKED UP	0	0	0	0	2	2	0	4
TOTAL INDIVIDUALS TRANSPORTED	9	19	17	13	37	22	33	150
TOTAL INDIVIDUAL TRIPS	6	13	11	9	19	14	15	87
TOTAL MILES	84	182	154	126	266	196	210	1,218

14 MILES TO STATION

34-12

<u>ROYAL OAK TOWNSHIP</u>	JUNE (start 6-10-74)	JULY	AUGUST	SEPTEMBER	OCTOBER	NOVEMBER	DECEMBER	TOTAL
TOTAL MEN TRANSPORTED	7	0	7	3	2	13	12	44
TOTAL WOMEN TRANSPORTED	0	0	1	0	2	5	0	8
TOTAL MEN PICKED UP	6	7	9	2	0	7	5	36
TOTAL WOMEN PICKED UP	0	1	0	2	2	2	0	7
TOTAL INDIVIDUALS TRANSPORTED	13	8	17	7	6	27	17	95
TOTAL INDIVIDUAL TRIPS	8	3	6	6	3	9	8	43
TOTAL MILES	208	78	156	156	78	234	208	1,118



34-13

<u>SOUTHFIELD</u>	JUNE (start 6-10-74)	JULY	AUGUST	SEPTEMBER	OCTOBER	NOVEMBER	DECEMBER	TOTAL
TOTAL MEN TRANSPORTED	17	23	24	24	16	44	35	183
TOTAL WOMEN TRANSPORTED	1	8	4	8	12	6	9	48
TOTAL MEN PICKED UP	33	55	41	48	35	45	44	301
TOTAL WOMEN PICKED UP	6	6	13	13	17	16	10	81
TOTAL INDIVIDUALS TRANSPORTED	57	92	82	93	80	111	98	613
TOTAL INDIVIDUAL TRIPS	24	31	31	28	32	30	26	202
TOTAL MILES	360	465	465	420	480	450	390	3,030

15

MILES TO STATION

34-14

<u>TROY</u>	JUNE (start 6-10-74)	JULY	AUGUST	SEPTEMBER	OCTOBER	NOVEMBER	DECEMBER	TOTAL
TOTAL MEN TRANSPORTED	4	9	19	15	12	13	12	84
TOTAL WOMEN TRANSPORTED	6	5	9	3	6	8	9	46
TOTAL MEN PICKED UP	12	19	48	20	21	30	30	180
TOTAL WOMEN PICKED UP	5	5	7	3	7	7	3	37
TOTAL INDIVIDUALS TRANSPORTED	27	38	83	41	46	58	54	347
TOTAL INDIVIDUAL TRIPS	14	17	23	19	21	22	21	137
TOTAL MILES	196	238	322.	266	294	308	294	1,918

14

MILES TO STATION

34-15

<u>GRAND TOTAL</u>	JUNE (start 6-10-74)	JULY	AUGUST	SEPTEMBER	OCTOBER	NOVEMBER	DECEMBER	TOTAL
TOTAL MEN TRANSPORTED	44	83	89	79	77	129	112	613
TOTAL WOMEN TRANSPORTED	11	21	23	21	30	39	23	168
TOTAL MEN PICKED UP	95	168	183	132	146	168	174	1,066
TOTAL WOMEN PICKED UP	16	19	27	23	34	36	25	180
TOTAL INDIVIDUALS TRANSPORTED	166	291	322	255	287	372	334	2,027
TOTAL INDIVIDUAL TRIPS	88	130	149	119	147	154	154	941
TOTAL MILES	1569	2147	2510	2075	2488	2650	2707	16,146

                     MILES TO STATION

TRUSTY CAMP  
Year-end report:

<u>1973</u>	<u>1974</u>
Average age.....23.9	Average age.....26
38% 17 thru 20 years	37.5% 17 thru 20 years
28% 21 thru 25 "	25.9% 21 thru 25 "
18% 26 thru 35 "	18% 26 thru 35 "
14% 36 thru 55 "	17.1% 36 thru 55 "
1% 56 thru 67 "	1.5% 56 thru 67 "
Total inmates... 144	Total inmates... 205
Length of sentence:	
9% 30 days	1% 30 days
8% 60 days	13.2% 60 days
43% 90 days	36.5% 90 days
24% 6 months	36.1% 6 months
12% 1 year	13.2% 1 year
Admitted drug users:	
43% 17 thru 20 years	61% 17 thru 20 years
35% 21 thru 25 "	58% 21 thru 25 "
13% 26 thru 35 "	22% 26 thru 35 "
5% 36 thru 55 "	17% 36 thru 55 "
0% 56 thru 67 "	0% 56 thru 67 "
Walk-a-ways:	
9 inmates	10 inmates
Walk-a-ways apprehended	
6 inmates	9 inmates
Walk-a-ways at large:	
3 inmates, (1 deceased)	1 inmate
Inmates by race:	
91 white	139 white
53 black	66 black
Inmate activity:	
Glass hauled, 201 tons.....	inmate hours 1,244
Flood control.....	" 251
Cleanup details .....	" 2,280
Marine division assist.....	" 411

OAKLAND COUNTY JAIL COMPLEX INMATE LEARNING CENTER

On September 3, 1974, the first inmates attended classes using the Learning Center concept, that is now a part of the total rehabilitation program here at the Oakland County Jail.

The Learning Center is staffed by certified teachers and aides from Pontiac's Adult Education Department. Classes are held daily; the men attend morning sessions, the women take part in afternoon classes, and special evening classes are held for some men and trustees. Undergraduates are encouraged to work toward obtaining a G E D (General Education Development) certificate. Postgraduates are given an opportunity to take part in A B E (Adult Basic Education) courses, as well as, speedreading, typing, sociology and psychology discussion groups. All students are encouraged to read good books and follow their natural talents in subjects such as art and creative writing. Admittance to class is determined by the following criteria: the inmate request, security recommendation of officers, intake questionnaire, and W R A T (Wide Range Achievement Test). Expansion of the present program and several innovations, in the way of speakers, and information series, are now being tested.



Kay Riley, of the Continuing Education Department of Pontiac School District, heads the Inmate Learning Center.

### OAKLAND COUNTY JAIL COMPLEX--CHAPLAIN SERVICES

Every Friday evening, two Chapel services are conducted, one for the women and one for the trusty men. Each week, a portion of the services is transcribed into the cell blocks. (covering about 400 men) and the inmates have the availability of the Chaplain's services. Individual follow up is made during the week by request of the inmate, which averages about 15-20 visits per week.

The following related activities are supervised by the Chaplain.

1. Speaking engagements at community groups concerning the jail.
2. Sewing classes once a week for female inmates.
3. Films shown at both the Jail Complex and the Trusty Camp.
4. Christmas Activities, which include a Christmas party with gifts, a Christmas skit, and Christmas Chapel Services.
5. Variety Night which has involved approximately 15 area Church and Community groups.
6. Distribution of 800 Bibles upon request.
7. Several follow up visitations after counseling.
8. Co-operation with Community Drug and Rehabilitation Programs.
9. A special musical concert was presented by Mr Archie Dennis of The Billy Graham Team.

Protective Services



Lt. Carl Matheny



INVESTIGATIONS BUREAU

ACTIVITY

On December 22, 1973 Chief B. Nolin was stricken with a heart attack and R. Hubble was temporarily appointed acting Chief of Detectives. To fill his vacancy Detective D. Nash was transferred from Civil to Criminal Investigations on January 2, 1974.

At the end of the month of April a re-organizational plan for the Detective Bureau was submitted to Sheriff Spreen. The plan called for the Criminal and Civil detectives to specialize in 15 major crime areas. The plan also called for a reclassification of the Detectives to Detective Sergeants, thus creating a command structure in this division and giving Oakland County a more professional investigative support service.

On October 7, 1974 the letter from the Sheriff requesting the change of classification to Detective Sergeants was taken before the Board of Commissioners for a vote and was passed 27 to 0.

On October 14, 1974 Chief Nolin was promoted to Lieutenant and R. Hubble was promoted to Chief of Detectives. At the same time D/Sgt. G. Watson was promoted to Chief of the Supportive Operations Crew.

On December 9, 1974 we assigned a D/Sgt. to the afternoon shift, and D/Sgt. Anderson was picked as the first afternoon D/Sgt.

Criminal Investigation handled by Investigation Bureau:

Criminal complaints	10,172
Closed complaints	2,248
Arrests	760
Warrants registered	2,237
Warrants cancelled (served)	1,996
Subpoenas received	9,885
Subpoenas served	9,885

Respectfully submitted,

R.W. Hubble,  
Chief of Detectives

## Crime Prevention.....

A necessary and vital service required of all police agencies regardless of size and location is that of crime prevention.

More often than not, knowledge and expertise which is taken for granted by any police officer is unknown to the average citizen.

It is through education of the public that we will greatly reduce potential crime areas. The public can be educated through the use of news releases, television, public meetings, and lectures and also through the distribution of brochures and personal contact.

This is a costly and time consuming job, and unless funded through grants from the Federal Government, few agencies can spare the time or the personnel.

Although this department has received no funds for crime prevention Sheriff Spreen feels that this area of concern is so important he has donated both his time and money, and has authored many brochures which are distributed free of charge to schools, businesses and civic groups. (see attached brochures)

Available also at a nominal charge from this department are display racks to hold the crime prevention brochures.

During the year of 1974, several crime prevention programs were presented by members of the Sheriff Department. These programs numbered 75, with over 3,000 people attending. A variety of subjects were covered including: Self Protection, Burglary Protection, Jail Reform, Juvenile Crime, Law Enforcement careers, Neighborhood Problems, Bicycle Theft Protection, Traffic Safety, and Water Safety.

Among the most requested subjects were Self Protection for Women, Traffic Safety, and Careers. These programs were presented all over Oakland County as a service to the citizens.

It is hoped that these programs will continue in the year of 1975. Several officers have had training, and the department is anxious to expand this service of education.

Carl G. Matheny, Lt.  
Protective Services

WARRANT/FUGITIVE DIVISION

<u>MONTH</u>	<u>WARRANTS REGISTERED</u>	<u>WARRANTS SERVED</u>
January	181	181
February	163	129
March	143	142
April	196	149
May	149	145
June	169	147
July	177	146
August	266	181
September	228	227
October	219	193
November	162	185
December	<u>184</u>	<u>171</u>
Totals	2,237	1,996

Out of County Warrants Processed:

Registered	268
Served	233

Out of State Warrants Processed:

Registered	87
Served	86

Respectfully submitted,

Guy E. Kessler, Det.Sgt.  
James Patrick, Det. Sgt.

YOUTH BUREAU

Closed Complaints	1011
Open Complaints	494
Resolved Misc. Complaints	<u>327</u>
Total Complaints	1832

Criminal arrests	3
Juvenile Petitions filed	183

Public Relations and/or Workshops 117 hours

Respectfully submitted,  
Det/Sgt. Gerald N. Reeves

PATROL SERVICES

ANNUAL REPORT

James H. Curtis,  
Chief

SUBSTATIONS OPEN DURING 1974

Commerce Substation, February 22, 1974

Independence Substation, May 3, 1974

Avon Substation, May 3, 1974

This brought to a total of 5 the number of substations operated by the Oakland County Sheriff's Department.

CONTRACTUAL PATROL INCREASES

OF MEN DURING 1974

Avon Township, 1974, increased contract from 5 men to 8 men.

Commerce Township, 1974, increased contract from 4 men to 6 men.

Highland Township, 1974, increased contract from 3 men to 4 men.

Independence Township, 1974, increased contract from 4 men to 5 men.

Orion Township, 1974, increased contract from 4 men to 6 men.

Springfield Township, 1974, increased from 1 man to 2 men.

## BICYCLE REGISTRATION PROGRAM

The Oakland County Sheriff's Department instituted a Bicycle Registration Program during 1974.

To date, the following townships have registered a total of approximately 3,000 bikes.

### Dates of Registration

Avon Township, July 27, 28, August 3, 4, 10, 11

Independence Township, August 24, 25, 31, Sept. 1, 18

Groveland Township, September 21, 28

AIR DIVISION



Senior pilot Terry Cranston left, Larry Hartzell second pilot, and Undersheriff John Nichols.



ABANDONED AUTOS, TRAFFIC DIVISION  
PROGRESS REPORT FOR THE YEAR OF 1974

The following is the number of vehicles impounded by the Oakland County Sheriff's Department for the year of 1974.

Arrest.....	658
Road Hazard.....	317
Recovered Stolen.....	214
Misc. ....	334
Abandoned.....	268
Accident.....	167
TOTAL.....	1,958

The following number of vehicles were disposed of in the listed manner:

Filed on.....	190
Scrapped.....	242
TOTAL.....	432

A total of 2,390 vehicles were processed for the year of 1974 through the Traffic Division.

TRAFFIC SAFETY BUREAU

ANNUAL REPORT

The duties of the Traffic Safety Officer include not only accident investigation and traffic control, but accident prevention as well.

It was discovered that even though the Deputies working the Road Patrol had good driving records they had never received formal driver education.

Driver education classes are necessary in that they serve also to prevent accidents, as well as alert drivers to particular hazardous situations.

Since the primary purpose of the Sheriff Department is the Road Patrol a vital service was needed to educate the Deputies in the proper handling of a vehicle.

Reprinted on the following twenty pages are a program developed by the General Motors Engineering Staff located at Milford Proving Grounds.

Department records indicate a vast improvement in preventing property damage type accidents with departmental cars.

G. Girard,  
Corporal  
Traffic Safety Officer

O.C.S.D.  
TRAFFIC SUMMARY  
DEPARTMENT REPORT

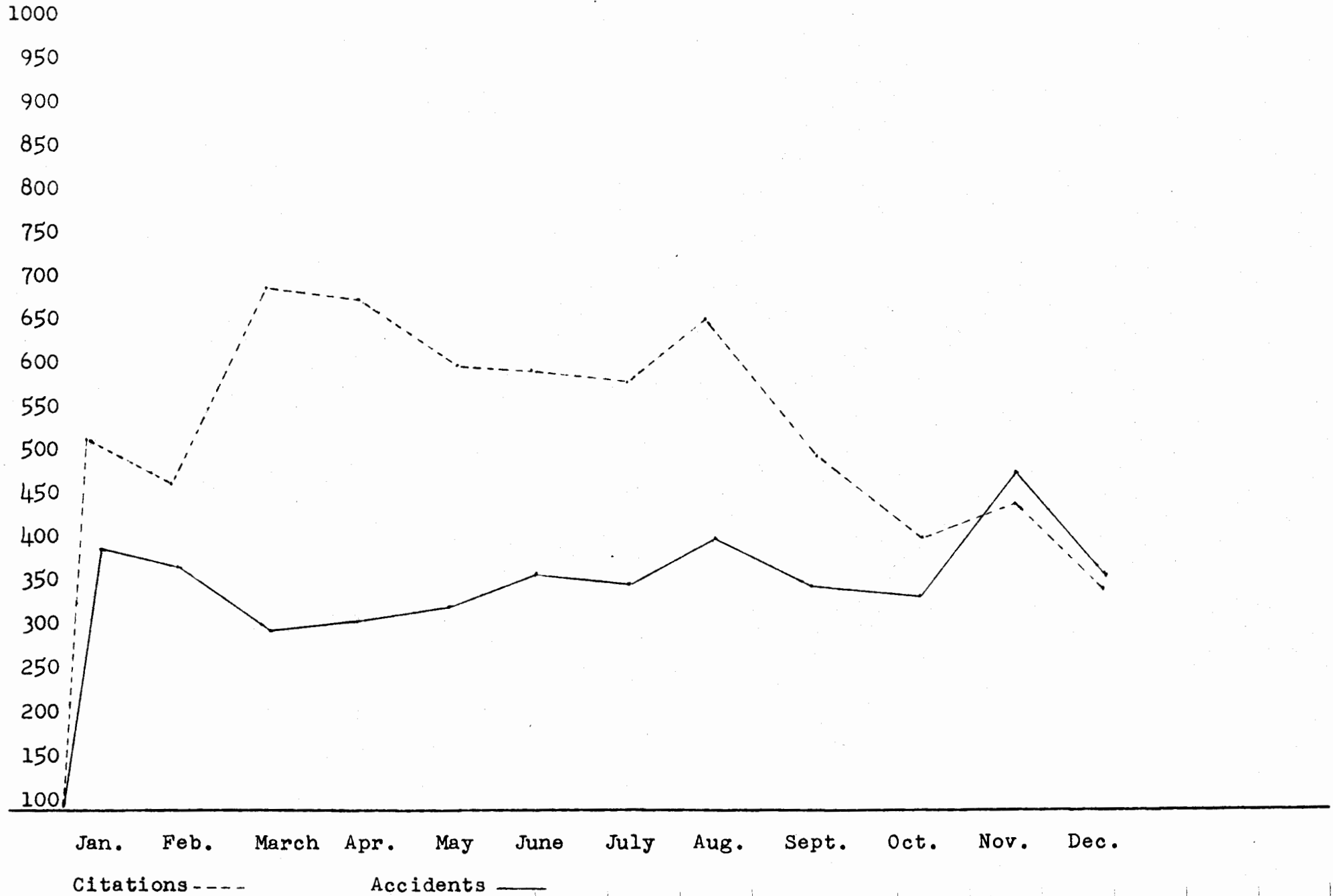
ACCIDENTS:	1974
Fatal	27
Private Property	7
Property Damage	2644
Property Damage H/R	199
Personal Injury	1283
Personal Injury H/R	17
Municipal Vehicle	<u>15</u>
Total	4192

TRAFFIC COMPLAINTS:

Reckless driving	151
License, title, regis.	83
Road hazard	76
ATV	3
Aircraft	4
Minibike	3
Motorcycle	39
Snow mobile	79
Water craft	63
Misc.	<u>49</u>
Total	550

source:  
O.C.D.P.

# Traffic-Safety Record 1974



MOTOR VEHICLE TRAFFIC DEATHS

STATE REPORT

	5 year average	1974
January	156	111
February	148	112
March	163	107
April	149	116
May	205	144
June	218	196
July	217	189
August	219	178
September	205	200
October	218	194
November	189	199
December	168	121
Annual Total	2,255	1,867

source:  
Michigan State Police

MOTOR VEHICLE TRAFFIC DEATHS

COUNTY REPORT

Oakland County's traffic fatalities were held to 158 in 1974, a decrease of 15% from 1973 and the lowest in 12 years. The low point was in 1962 when 115 persons were killed on the county's streets and highways.

	1972		1973		1974		3 yr. AVG. (71-73)
	NO.	CUM.	NO.	CUM.	NO.	CUM.	
JAN	21	21	11	11	11	11	15.7
FEB	16	37	18	29	13	24	15.0
MAR	9	46	16	45	7	31	14.0
APR	10	56	10	55	11	42	12.0
MAY	16	72	15	70	11	53	16.0
JUN	14	86	21	91	18	71	16.3
JUL	18	104	16	107	13	84	16.0
AUG	13	117	16	123	13*	97	15.0
SEP	14	131	22	145	18*	115	14.0
OCT	18	149	18	163	16*	131	20.0
NOV	15	164	16	179	23	154	18.3
DEC	15	179	7	186	4	158	12.3

\*figures corrected because of delayed deaths.

source:  
Traffic Improvement Assoc.  
of Oakland County

TOTAL TRAFFIC ACCIDENT SUMMARY FOR OAKLAND COUNTY\*

INCLUDES THIS YEAR TO DATE\* DEC 1974. DATE RUN 02/17/75

TABLE 1A. TYPE OF ACCIDENT	NUMBER OF ACCIDENTS				NUMBER OF PERSONS				INJURY SEVERITY		
	TOTAL	FATAL	INJURY	P=D	TOTAL*	KILLED	INJURED	NOT-INJURED*	A	B	C
NON-COLLISION:											
1. OVERTURNING	738	12	458	268	1163	12	611	540	165	278	168
2. OTHER NON-COLLISION/NOT STATED COLLISION INVOLVING:	42	0	29	13	118	0	37	81	13	12	12
3. PEDESTRIAN	471	19	434	18	1165	19	467	679	186	156	125
4. MV IN TRANSPORT	24104	75	7489	16540	78362	84	12039	66739	1329	3144	7566
5. MV IN OTHER ROADWAY	25	2	11	12	101	2	30	69	8	8	14
6. PARKED MV	2765	3	430	2332	3894	3	519	3372	72	238	209
7. RAILWAY TRAIN	26	2	8	16	34	2	11	21	5	1	5
8. PEDALCYCLIST	497	6	425	66	1192	6	448	738	107	228	113
9. ANIMAL	143	0	12	131	236	0	14	222	2	8	4
10. FIXED OBJECT	3503	28	1275	2200	5432	31	1618	3783	340	718	560
11. OTHER OBJECT	87	1	17	69	132	1	18	113	4	6	8
TOTALS	32401	148	10588	21665	92329	160	15812	76357	2231	4797	8784
* INCLUDES OCCUPANTS OF VEHICLES WITH EIGHT OR MORE OCCUPANTS									159		
VEHICLES WITH NUMBER OF OCCUPANTS NOT STATED									29		

TABLE 1B. TYPE OF ACCIDENT - ON ROADWAY

TABLE 1B. TYPE OF ACCIDENT - ON ROADWAY	NUMBER OF ACCIDENTS				NUMBER OF PERSONS				INJURY SEVERITY		
	TOTAL	FATAL	INJURY	P=D	TOTAL*	KILLED	INJURED	NOT-INJURED*	A	B	C
NON-COLLISION:											
1. OVERTURNING	258	3	195	60	398	3	247	148	79	118	50
2. OTHER NON-COLLISION/NOT STATED COLLISION INVOLVING:	37	0	28	9	109	0	36	73	12	12	12
3. PEDESTRIAN	459	18	423	18	1135	18	453	664	181	151	121
4. MV IN TRANSPORT	24076	75	7477	16524	78769	84	12020	66665	1326	3139	7555
5. MV IN OTHER ROADWAY	25	2	11	12	101	2	30	69	8	8	14
6. PARKED MV	290	2	91	197	446	2	116	328	17	49	50
7. RAILWAY TRAIN	26	2	8	16	34	2	11	21	5	1	5
8. PEDALCYCLIST	482	6	412	64	1155	6	435	714	103	221	111
9. ANIMAL	141	0	11	130	233	0	13	220	2	7	4
10. FIXED OBJECT	115	0	27	88	197	0	33	164	6	8	19
11. OTHER OBJECT	73	1	12	60	111	1	13	97	2	5	6
TOTALS	25982	109	8695	17178	82688	118	13407	69163	1741	3719	7947
* INCLUDES OCCUPANTS OF VEHICLES WITH EIGHT OR MORE OCCUPANTS									149		
VEHICLES WITH NUMBER OF OCCUPANTS NOT STATED									25		

TABLE 1C. TYPE OF ACCIDENT - OFF ROADWAY

TABLE 1C. TYPE OF ACCIDENT - OFF ROADWAY	NUMBER OF ACCIDENTS				NUMBER OF PERSONS				INJURY SEVERITY		
	TOTAL	FATAL	INJURY	P=D	TOTAL*	KILLED	INJURED	NOT INJURED*	A	B	C
NON-COLLISION:											
1. OVERTURNING	480	9	263	208	765	9	364	392	86	160	118
2. OTHER NON-COLLISION/NOT STATED COLLISION INVOLVING:	5	0	1	4	9	0	1	8	1	0	0
3. PEDESTRIAN	12	1	11	0	30	1	14	15	5	5	4
4. MV IN TRANSPORT	28	0	12	16	93	0	19	74	3	5	11
5. MV IN OTHER ROADWAY	0	0	0	0	0	0	0	0	0	0	0
6. PARKED MV	2475	1	339	2135	3448	1	403	3044	55	189	159
7. RAILWAY TRAIN	0	0	0	0	0	0	0	0	0	0	0
8. PEDALCYCLIST	15	0	13	2	37	0	13	24	4	7	2
9. ANIMAL	2	0	1	1	3	0	1	2	0	1	0
10. FIXED OBJECT	3388	28	1248	2112	5235	31	1585	3619	334	710	541
11. OTHER OBJECT	14	0	5	7	21	0	5	16	2	1	2
TOTALS	6419	39	1893	4487	9641	42	2405	7194	490	1078	837
* INCLUDES OCCUPANTS OF VEHICLES WITH EIGHT OR MORE OCCUPANTS									10		
VEHICLES WITH NUMBER OF OCCUPANTS NOT STATED									4		

TOTAL TRAFFIC ACCIDENT SUMMARY FOR OAKLAND COUNTY\*

INCLUDES THIS YEAR TO DATE, DEC 1974. DATE RUN 02/17/75

TABLE JAI. LOCATION BY POPULATION OF AREA

NUMBER OF ACCIDENTS

MUNICIPALITIES AND TOWNSHIPS:	TOTAL	TOTAL			ON ROADWAY				OFF ROADWAY			
		FATAL	INJURY	P <sup>TD</sup>	TOTAL	FATAL	INJURY	P <sup>TD</sup>	TOTAL	FATAL	INJURY	P <sup>TD</sup>
1. TOWNSHIPS	9349	79	3369	5901	7154	59	2519	4576	2195	20	850	1325
2. UNDER 1,000	126	0	48	78	109	0	44	65	17	0	4	13
3. 1,000 TO 2,500	370	4	96	270	281	4	70	207	89	0	26	63
4. 2,500 TO 5,000	1560	5	435	1120	1252	4	354	894	308	1	81	226
5. 5,000 TO 10,000	851	4	304	543	648	2	236	410	203	2	68	133
6. 10,000 TO 25,000	2834	7	862	1965	2224	6	740	1478	610	1	122	487
7. 25,000 TO 50,000	7853	23	2526	5304	6492	18	2192	4282	1361	5	334	1022
8. 50,000 TO 100,000	9458	26	2948	6484	7822	16	2540	5266	1636	10	408	1218
9. 100,000 TO 250,000	0	0	0	0	0	0	0	0	0	0	0	0
10. 250,000 OR MORE	0	0	0	0	0	0	0	0	0	0	0	0
TOTALS	32401	148	10588	21665	25982	109	8695	17178	6419	39	1893	4487

TABLE JAJ. LOCATION BY POPULATION OF AREA

NUMBER OF PERSONS

MUNICIPALITIES AND TOWNSHIPS:	TOTAL*	KILLED			INJURED			SEVERITY			NOT INJURED
		TOTAL	ON RDWAY	OFF RDWAY	TOTAL	ON RDWAY	OFF RDWAY	A	B	C	
1. TOWNSHIPS	27359	87	67	20	5193	4094	1099	911	1652	2630	22079
2. UNDER 1,000	357	0	0	0	83	78	5	22	18	43	274
3. 1,000 TO 2,500	959	4	4	0	136	108	28	30	48	58	819
4. 2,500 TO 5,000	4544	6	5	1	615	511	104	117	205	293	3923
5. 5,000 TO 10,000	2361	4	2	2	452	361	91	61	188	203	1905
6. 10,000 TO 25,000	7495	7	6	1	1150	1011	139	117	303	730	6338
7. 25,000 TO 50,000	22287	23	18	5	3785	3368	417	483	1149	2153	18479
8. 50,000 TO 100,000	26967	29	16	13	4398	3876	522	490	1234	2674	22540
9. 100,000 TO 250,000	0	0	0	0	0	0	0	0	0	0	0
10. 250,000 OR MORE	0	0	0	0	0	0	0	0	0	0	0
TOTALS	92329	160	118	42	15812	13407	2405	2231	4797	8784	76357

\* INCLUDES OCCUPANTS OF VEHICLES WITH EIGHT OR MORE OCCUPANTS  
VEHICLES WITH NUMBER OF OCCUPANTS NOT STATED

TABLE JAJ. LOCATION BY CLASS OF TRAFFICWAY

NUMBER OF ACCIDENTS

CLASS OF TRAFFICWAY:	TOTAL	TOTAL			ON ROADWAY				OFF ROADWAY			
		FATAL	INJURY	P <sup>TD</sup>	TOTAL	FATAL	INJURY	P <sup>TD</sup>	TOTAL	FATAL	INJURY	P <sup>TD</sup>
1. INTERSTATE SYSTEM	1354	12	506	836	914	7	322	585	440	5	184	251
2. OTHER FULL CONTROL ACCESS	113	2	44	67	83	0	34	49	30	2	10	18
3. OTHER U.S. ROUTE NUMBERED	1951	9	682	1260	1766	7	622	1137	185	2	60	123
4. OTHER STATE NUMBERED	4624	26	1565	3033	4178	20	1409	2749	446	6	156	284
5. OTHER MAJOR ARTERIAL	1256	0	376	880	1130	0	334	796	126	0	42	84
6. COUNTY ROADS	0	0	0	0	0	0	0	0	0	0	0	0
7. LOCAL STREETS	0	0	0	0	0	0	0	0	0	0	0	0
8. OTHER TRAFFICWAYS	0	0	0	0	0	0	0	0	0	0	0	0
9. LOCAL ROADS - TYPE NOT STATED	23103	99	7415	15589	17911	75	5974	11862	5192	24	1441	3727
TOTALS	32401	148	10588	21665	25982	109	8695	17178	6419	39	1893	4487



TOTAL TRAFFIC ACCIDENT SUMMARY FOR OAKLAND COUNTY\*

INCLUDES THIS YEAR TO DATE\* DEC 1974. DATE RUN 02/17/75

TABLE 3B2. LOCATION BY CLASS OF TRAFFICWAY

CLASS OF TRAFFICWAY	TOTAL*	K I L L E D			I N J U R E D			S E V E R I T Y			NOT* INJURED
		TOTAL	O N		TOTAL	O N		A	B	C	
			R D W A Y	O F F R D W A Y		R D W A Y	O F F R D W A Y				
1. INTERSTATE SYSTEM	3603	15	10	5	782	531	251	131	248	403	2806
2. OTHER FULL CONTROL ACCESS	274	2	0	2	71	54	17	17	19	35	201
3. OTHER U.S. ROUTE NUMBERED	6040	9	7	2	1046	975	71	134	280	632	4985
4. OTHER STATE NUMBERED	14351	28	22	6	2418	2230	188	307	654	1457	11905
5. OTHER MAJOR ARTERIAL	3816	0	0	0	586	529	57	79	145	362	3230
6. COUNTY ROADS	0	0	0	0	0	0	0	0	0	0	0
7. LOCAL STREETS	0	0	0	0	0	0	0	0	0	0	0
8. OTHER TRAFFICWAYS	0	0	0	0	0	0	0	0	0	0	0
9. LOCAL ROADS - TYPE NOT STATED	64245	106	79	27	10909	9088	1821	1563	3451	5895	53230
T O T A L S	92329	160	118	42	15812	13407	2405	2231	4797	8784	76357

\* INCLUDES OCCUPANTS OF: VEHICLES WITH EIGHT OR MORE OCCUPANTS 159  
VEHICLES WITH NUMBER OF OCCUPANTS NOT STATED 29

TABLE 4A. AGE OF CASUALTY

	TOTAL	M A L E		F E M A L E		N U M B E R O F P E R S O N S K I L L E D					
		DRIVER	PASS- ENGRS	PEDES- TRIANS	PEDAL- CYCLE	MOTOR- CYCLE	FARM EQUIP	ALL OTHERS			
1. 0 - 4	4	2	2	0	1	2	1	0	0	0	
2. 5 - 9	3	2	1	0	0	2	1	0	0	0	
3. 10 - 14	8	4	4	0	4	2	1	0	0	1	
4. 15 - 19	40	30	10	14	15	3	3	5	0	0	
5. 20 - 24	32	24	8	14	6	3	0	9	0	0	
6. 25 - 34	25	18	7	13	5	3	0	4	0	0	
7. 35 - 44	15	11	4	8	3	1	0	2	0	1	
8. 45 - 54	10	5	5	7	3	0	0	0	0	0	
9. 55 - 64	9	4	5	5	2	1	0	0	0	1	
10. 65 - 74	5	3	2	2	0	3	0	0	0	0	
11. 75 AND OLDER	9	5	4	4	4	1	0	0	0	0	
12. NOT STATED	0	0	0	0	0	0	0	0	0	0	
T O T A L S	160	108	52	67	43	21	6	20	0	3	

TABLE 4B. AGE OF CASUALTY

	TOTAL	M A L E		F E M A L E		N U M B E R O F P E R S O N S I N J U R E D					
		DRIVER	PASS- ENGRS	PEDES- TRIANS	PEDAL- CYCLE	MOTOR- CYCLE	FARM EQUIP	ALL OTHERS			
1. 0 - 4	479	235	244	1	427	42	8	1	0	0	
2. 5 - 9	518	264	254	0	336	95	81	4	0	2	
3. 10 - 14	675	381	294	4	349	91	192	31	2	6	
4. 15 - 19	3522	2034	1488	1818	1130	90	104	342	1	37	
5. 20 - 24	2838	1656	1182	1810	619	44	22	308	0	35	
6. 25 - 34	2985	1632	1353	2136	548	34	12	193	0	62	
7. 35 - 44	1536	777	759	1151	302	14	6	46	0	17	
8. 45 - 54	1551	762	789	1180	324	16	3	14	0	14	
9. 55 - 64	963	428	535	666	262	21	2	4	1	7	
10. 65 - 74	475	205	270	289	165	18	1	0	0	2	
11. 75 AND OLDER	175	85	90	98	61	16	0	0	0	0	
12. NOT STATED	95	38	57	9	76	0	3	5	0	2	
T O T A L S	15812	8497	7315	9162	4599	481	434	948	4	184	

TOTAL TRAFFIC ACCIDENT SUMMARY FOR OAKLAND COUNTY

INCLUDES THIS YEAR TO DATE, DEC 1974. DATE RUN 02/17/75

TABLE 2A. TWO MOTOR VEHICLE INTERSECTION ACCIDENTS

	NUMBER OF ACCIDENTS			
	TOTAL	FATAL	INJURY	P=D
1. ENTERING AT ANGLE	4913	24	1671	3218
2A. FROM SAME DIR. BOTH STRAIGHT	657	1	116	540
2B. SAME-ONE TURN, ONE STRAIGHT	1132	1	303	828
2C. SAME-ONE STOPPED	3067	1	1059	2007
2D. SAME-ALL OTHERS	207	0	27	180
3A. FROM OPP. DIR. BOTH STRAIGHT	231	6	96	129
3B. SAME-ONE LEFT TURN, ONE STR.	1969	8	807	1154
3C. SAME-ALL OTHERS	32	0	9	23
4. OTHER	256	0	36	222
TOTALS	12466	41	4124	8301

TABLE 2B. TWO MOTOR VEHICLE NON-INTERSECTION ACCIDENTS

	NUMBER OF ACCIDENTS			
	TOTAL	FATAL	INJURY	P=D
1. GOING OPP. DIR. BOTH MOVING	1414	24	512	878
2. GOING SAME DIR. BOTH MOVING	2798	5	622	2171
3A. ONE CAR PARKED	2507	3	394	2110
3B. ONE CAR PARKED IN TRAFFIC	3251	0	1149	2102
4A. ONE CAR ENTERING PARKED POS.	16	0	5	11
4B. ONE CAR LEAVING PARKED POS.	130	0	18	112
5A. ONE CAR ENTERING DRIVEWAY ACC.	1708	3	554	1151
5B. ONE CAR LEAVING DRIVEWAY ACC.	2244	2	478	1764
6. ALL OTHERS	360	2	74	284
TOTALS	14428	39	3806	10583

TABLE 2C. PEDESTRIAN ACCIDENTS

	TOTAL			FATAL			INJURY			P=D		
	TOTAL	AT		TOTAL	AT		TOTAL	AT		TOTAL	AT	
		INTER	NOT AT INTER		INTER	NOT AT INTER		INTER	NOT AT INTER		INTER	NOT AT INTER
1. CAR GOING STRAIGHT	360	106	254	18	4	14	330	99	231	12	3	9
2. CAR TURNING RIGHT	23	22	1	0	0	0	21	20	1	2	2	0
3. CAR TURNING LEFT	26	23	3	0	0	0	23	20	3	3	3	0
4. CAR BACKING	16	2	14	1	0	1	15	2	13	0	0	0
5. ALL OTHERS	37	14	23	0	0	0	36	14	22	1	0	1
6. NOT STATED	9	2	7	0	0	0	9	2	7	0	0	0
TOTALS	471	169	302	19	4	15	434	157	277	18	8	10

TOTAL TRAFFIC ACCIDENT SUMMARY FOR OAKLAND COUNTY\*

INCLUDES THIS YEAR TO DATE\* DEC 1974. DATE RUN 02/17/75

TABLE 5D. ALL OTHER ACCIDENTS

AT INTERSECTION:	NUMBER OF ACCIDENTS			
	TOTAL	FATAL	INJURY	P=D
1. COLLISION WITH OTHER ROAD VEHICLE OR RAILWAY TRAIN	216	1	178	37
2. COLLISION WITH FIXED OBJECT	783	3	256	524
3. COLLISION WITH OTHER OBJECT OR ANIMAL	27	0	6	21
4. OVERTURNING	131	1	90	40
5. OTHER NON-COLLISION	12	0	11	1
NOT AT INTERSECTION:				
6. COLLISION WITH OTHER ROAD VEHICLE OR RAILWAY TRAIN	307	7	255	45
7. COLLISION WITH FIXED OBJECT	2720	25	1019	1676
8. COLLISION WITH OTHER OBJECT OR ANIMAL	203	1	23	179
9. OVERTURNING	607	11	368	228
10. OTHER NON-COLLISION	29	0	17	12
11. NOT STATED	1	0	1	0
TOTALS	5036	49	2224	2763

TABLE 5A THRU 5D: TOTALS 32401 148 10588 21665

TABLE 6. PEDESTRIAN ACTIONS BY AGE

PEDESTRIANS	KILLED	TOTAL	NUMBER OF PEDESTRIANS KILLED AND INJURED								NOT STATED
			0	5	10	15	20	25	45	65 & OLDER	
1A. CROSSING AT INTERSECTION OR IN CROSSWALK	4	151	4	29	34	30	12	9	15	18	0
1B. CROSSING NOT AT INTERSECTION OR IN CROSSWALK	9	211	30	62	45	21	16	16	8	13	0
2A. WALKING IN ROADWAY W/ TRAFFIC	2	29	0	0	5	13	5	5	0	1	0
2B. SAME - AGAINST TRAFFIC	0	1	0	0	0	1	0	0	0	0	0
3. STANDING OR LYING IN ROADWAY	0	17	1	1	2	6	1	3	2	1	0
4. PUSHING OR WORKING ON VEHICLE IN ROADWAY	0	16	0	0	0	6	2	6	2	0	0
5. OTHER WORKING IN ROADWAY	0	6	0	0	0	2	1	1	2	0	0
6. PLAYING IN ROADWAY	0	10	4	2	3	1	0	0	0	0	0
7. OTHER IN ROADWAY	0	21	4	2	1	5	3	3	3	0	0
8. NOT IN ROADWAY	5	37	1	1	3	8	5	9	6	4	0
9. NOT STATED	1	3	0	0	0	0	2	0	0	1	0
TOTALS	21	502	44	97	93	93	47	52	38	38	0

TABLE 7. AGE OF DRIVER

	NUMBER OF DRIVERS			
	TOTAL	FATAL	INJURY	P=D
1. 15 AND YOUNGER	167	0	76	91
2. 16	2311	8	723	1580
3. 17	3349	18	1063	2268
4. 18 - 19	6548	30	2224	4294
5. 20 - 24	10718	49	3695	6974
6. 25 - 34	12689	49	4341	8299
7. 35 - 44	7174	28	2425	4721
8. 45 - 54	6854	22	2324	4508
9. 55 - 64	4118	21	1400	2697
10. 65 - 74	1834	6	609	1219
11. 75 AND OLDER	661	5	209	447
12. NOT STATED *	2400	4	352	2044
TOTALS	58823	240	19441	39142
* UNAPPREHENDED HIT-RUN DRIVERS INCLUDED ABOVE	2190	4	306	1880

TOTAL TRAFFIC ACCIDENT SUMMARY FOR OAKLAND COUNTY\*

INCLUDES THIS YEAR TO DATE\* DEC 1974. DATE RUN 02/17/75

TABLE 6. SEX OF DRIVER

	NUMBER OF DRIVERS			
	TOTAL	FATAL	INJURY	P=0
1. MALE	40173	182	12990	27001
2. FEMALE	18650	58	5451	12141
TOTALS	58823	240	19441	39142

TABLE 7. RESIDENCE OF DRIVER

	NUMBER OF DRIVERS			
	TOTAL	FATAL	INJURY	P=0
1. LOCAL (COUNTY) RESIDENT	44246	184	14814	29248
2. RESIDING ELSEWHERE IN STATE	11570	50	4052	7468
3. NON-RESIDENT OF STATE	349	2	108	239
4. NOT STATED	2658	4	467	2187
TOTALS	58823	240	19441	39142

TABLE 9A. DRIVERLESS MOVING VEHICLES

	TOTALS	FATAL	INJURY	P=0
	66	0	10	56

TABLE 10. CONTRIBUTING CIRCUMSTANCES

	NUMBER OF ACCIDENTS			
	TOTAL	FATAL	INJURY	P=0
1. SPEED TOO FAST	9987	57	3570	6360
2. FAILED TO YIELD RIGHT OF WAY / DISREGARDED TRAFFIC CONTROL	7114	31	2378	4705
3. DROVE LEFT OF CENTER /IMPROPER OVERTAKING/LANE USAGE	4027	27	1006	2994
4. FOLLOWED TOO CLOSE / UNABLE TO STOP	4481	3	1605	2873
5. IMPROPER TURN/SIGNAL/NO SIGNAL	3030	2	925	2103
6. DRIVER INATTENTION/ILL/ETC	48	0	14	34
7. HAD BEEN DRINKING	25	1	8	16
8. OTHER IMPROPER DRIVING	2179	8	265	1906
9. PEDESTRIAN ERROR	295	13	271	11
10. DEFECTIVE TIRES	21	0	9	12
11. OTHER MECHANICAL DEFECT	47	0	16	31
12. ROAD DEFECT	20	0	7	13
13. OTHER / NOT STATED	1127	6	514	607
TOTALS	32401	148	10588	21665

TABLE 11. TYPE OF MOTOR VEHICLE

	NUMBER OF VEHICLES			
	TOTAL	FATAL	INJURY	P=0
1. PASSENGER CAR	49022	188	16275	32559
2. PASSENGER CAR AND TRAILER	119	0	27	92
3. TRUCK OR TRUCK TRACTOR	5623	15	1641	3967
4. TRUCK TRACTOR AND SEMI-TRAILER	486	8	151	327
5. OTHER TRUCK COMBINATION	138	0	44	94
6. FARM TRACTOR AND/OR FARM EQUIP	13	0	4	9
7. TAXICAB	REPORTED AS PASSENGER CAR			
8. BUS	60	0	19	41
9. SCHOOL BUS	170	0	29	141
10. MOTORCYCLE	1003	21	862	120
11. MOTOR SCOOTER OR MOTOR BICYCLE	REPORTED AS MOTORCYCLE			
12. OTHER / NOT STATED	2255	8	399	1848
TOTALS	58889	240	19451	39198

SPECIAL VEHICLES INCLUDED IN ABOVE:

14. EMERGENCY (INCLUDING PRIVATE)	TYPES 14, 15 AND 16
15. MILITARY VEHICLES	CANNOT BE IDENTIFIED
16. OTHER	SEE LIST

## TOTAL TRAFFIC ACCIDENT SUMMARY FOR OAKLAND COUNTY\*

INCLUDES THIS YEAR TO DATE, DEC 1974. DATE RUN 02/17/75

	NUMBER OF ACCIDENTS			
	TOTAL	FATAL	INJURY	P-D
1. DRY	18796	111	6596	12089
2. WET	8629	26	2802	5801
3. SNOWY OR ICY	4708	10	1105	3593
4. OTHER OR NOT STATED	268	1	85	182
TOTALS	32401	148	10588	21665

	NUMBER OF ACCIDENTS			
	TOTAL	FATAL	INJURY	P-D
1. DAYLIGHT	20819	65	6568	14186
2. DAWN OR DUSK	1433	7	439	987
3A. DARKNESS - STREET LIT	3297	18	1155	2124
3B. DARKNESS - STREET NOT LIT	6708	58	2390	4260
4. NOT STATED	144	0	36	108
TOTALS	32401	148	10588	21665

	NUMBER OF ACCIDENTS			
	TOTAL	FATAL	INJURY	P-D
1. HEAD-ON	1054	28	447	579
2. REAR-END	1888	5	525	1358
3. SIDESWIPE-MEETING	459	1	115	343
4. SIDESWIPE-PASSING	1147	0	127	1020
5. ANGLE	3069	21	1259	1789
6. BACKED INTO	376	2	22	352
7. ALL OTHER	18890	23	5432	13435
8. NOT STATED	11	0	3	8
TOTALS	26894	80	7930	18884

	NUMBER OF ACCIDENTS			
	TOTAL	FATAL	INJURY	P-D
1. HAD BEEN DRINKING	4633	68	2062	2503
2. NOT KNOWN IF DRINKING	3315	4	828	2483
3. HAD NOT BEEN DRINKING	24453	76	7698	16679
TOTALS	32401	148	10588	21665

	NUMBER OF DRIVERS			
	TOTAL	FATAL	INJURY	P-D
1. HAD BEEN DRINKING	4859	76	2184	2599
2. NOT KNOWN IF DRINKING	3463	6	739	2718
3. HAD NOT BEEN DRINKING	50501	158	16518	33825
TOTALS	58823	240	19441	39142

	NUMBER OF PEDESTRIANS			
	TOTAL	FATAL	INJURY	P-D
1. HAD BEEN DRINKING	24	4	19	1
2. NOT KNOWN IF DRINKING	204	0	195	9
3. HAD NOT BEEN DRINKING	292	18	266	8
TOTALS	520	22	480	18

TOTAL TRAFFIC ACCIDENT SUMMARY FOR OAKLAND COUNTY.

INCLUDES THIS YEAR TO DATE, DEC 1974, DATE RUN 02/18/75

TABLE 7. HAZARDOUS ACTION

	NUMBER OF TRAFFIC UNITS*			
	TOTAL	FATAL	INJURY	P=D
1. NO VIOLATION	26456	114	9482	17260
2. SPEED TOO FAST	10126	57	3624	6445
3. SPEED TOO SLOW	14	0	9	5
4. FAILED TO YIELD RIGHT OF WAY / DISREGARDED TRAFFIC CONTROL	7957	49	3014	4894
5. WRONG WAY	53	0	26	27
6. DROVE LEFT OF CENTER /IMPROPER OVERTAKING/LANE USAGE	4295	29	1086	3180
7. IMPROPER TURN/SIGNAL/NO SIGNAL	3398	4	1049	2345
8. IMPROPER BACKING /UNSAFE START	1726	3	147	1576
9. FOLLOWED TOO CLOSE / UNABLE TO STOP	4722	4	1698	3020
10. OTHER / NOT KNOWN	702	9	219	474
TOTALS	59849	269	20354	39226

TABLE 8. CONTRIBUTING CIRCUMSTANCE

	NUMBER OF TRAFFIC UNITS*			
	TOTAL	FATAL	INJURY	P=D
1. NONE	25788	98	9027	16663
2. D.U.I.L. OR DRUGS	496	34	202	260
3. RECKLESS OR CARELESS DRIVING	434	21	249	164
4. DRIVER INATTENTION/ILL/ETC	803	3	319	481
5. FAILED TO COMPLY WITH RESTRICT	10	0	5	5
6. OBSCURED VISION	983	9	344	630
7. DEFECTIVE EQUIPMENT	734	5	273	456
8. LOST CONTROL DUE TO SHIFTING LOAD/WIND/VACUUM	15	0	4	11
9. SKIDDING	2947	8	913	2026
10. OTHER / NOT KNOWN	27639	91	9018	18530
TOTALS	59849	269	20354	39226

\* INCLUDES EACH MOTOR VEHICLE/DRIVER, OTHER ROAD VEHICLE/DRIVER  
(EXCEPT RAILWAY VEHICLE) AND PEDESTRIAN INVOLVED

59

YEAR END

TOWNSHIP

ACTIVITY, CITATIONS

Townships	73 - 74	Townships	73 - 74
Addison .....	-	Novi .....	-
Avon* .....	1318 - 899	Oakland* .....	-
Bloomfield .....	-	Orion* .....	885 - 636
Brandon .....	42 - 11	Oxford .....	171 - 164
Commerce* .....	1169 - 986	Pontiac .....	-
Groveland .....	106 - 71	Rose .....	17 - 10
Highland* .....	788 - 662	Royal Oak .....	-
Holly .....	111 - 71	Springfield* .....	332 - 247
Independence* .....	898 - 814	Waterford .....	-
Lyon .....	-	West Bloomfield ...	-
Milford .....	99 - 64	White Lake .....	361 - 228

\* Under contract

## NEW IDEAS INSTITUTED FOR 1974 MARINE PROGRAM

Better disbursement of marine personnel was instituted on an afternoon shift - this was accomplished by dividing the full-time summer help into two groups and rotating the groups on a 28 day schedule. With this plan a marine officer was available seven days a week, sixteen hours a day, with a minimum of one man and a maximum of three men.

Marine officers were also assigned to two lakes on a selective enforcement basis, by having the men work differant nights during the week to provide better coverage of lakes with problems.

By applying the above method we felt the county was receiving the best utilization of personnel for Marine Enforcement and Education. We derived at this due to the fact that the injury accidents within the county were reduced by 57%, although the violations issued increased by 103%!

The equipment specifications for the type of boats used on patrol was changed to a "Boston Whaler" style, enabling broader utilization to the point of accessibility of waters that have been unaccessible in the past. This type of boat also proved to be proficient on drowning calls by carrying additional persons and equipment needed for this operation.

Frederick K. Scholz, Sgt.  
Marine Division



OAKLAND COUNTY SHERIFF'S MARINE DIVISION - 1974

MARINE PATROL HOURS	3,850
COMPLAINT INVESTIGATION	1,042
BODY RECOVERY	375 $\frac{1}{2}$
REGATTAS	38 $\frac{1}{2}$
DISPATCHER	682
MAINTENANCE	1,348
BOAT LIVERY INSPECTION	69 $\frac{1}{2}$
RECORDS, REPORTS & ADMINISTRATION	5,659 $\frac{1}{2}$
TRAINING	550
COURT	129
MISCELLANEOUS (Travel- Parades-etc.)	3,107
Total	<u>16,851</u>

DEPARTMENT DROWNING CALLS - 37                      TOTAL COUNTY DROWNINGS - 29  
 (Fatalities-20 Possible-11 Injured-9  
 Assists to other Department-6)

BOATING ACCIDENTS - 32  
 (Property Damage-22 Injury Accidents-10)

COMPLAINTS - 588  
 (Reckless Operation-Raft & Dock Locations-Excessive Noise-  
 Larcenies-Found & Abandoned Boats-etc.)

BOAT LIVERY INSPECTION - 44	PLEASURE BOATS SAFETY INSPECTED- 4,850
(Approved Boats-932	(Approved Boats-3,884
Not Approved-7)	Not Approved-966)

WATERCRAFT VIOLATIONS		
Safety Equipment	602	Exceeding Capacity Plate 3
No Mirror/Observer	180	Exceeding Slow-No-Wake 175
Registration	147	Passengers/On Bow 21
Reckless Operation	16	Passenger/Operator Riding
Riding on Gunwale	25	on Back of Seat 46
Boating Certificate	3	Standing/Boat Operation 52
Not Counter Clock-wise	30	Littering 2
Reckless Skiing	3	Miscellaneous 4
		Total <u>1,309</u>

CONTACTS - 12,230  
 (Persons encountered by marine deputies on patrol and  
 advised regarding Safe Boating)

PLEASURE BOATING CLASSES - 26	WATER SAFETY LECTURES - 98
Instruction Hours-258	Hours-149
Students-1,395	Attendance-3,600

OAKLAND COUNTY SNOWMOBILE PROGRAM - 1974

COMPLAINT CALLS - 149  
(Trespass-Operation in road-  
Larceny of machine-etc.)

COMPLAINT HOURS - 652½

PROPERTY DAMAGE ACCIDENTS - 14

INJURY ACCIDENTS - 11  
(Injured persons-16)

SNOWMOBILE VIOLATIONS - 103

SNOWMOBILE SAFETY CLASSES - 79  
Students-4,807

INSTRUCTION HOURS - 759

# Oakland County Sheriff's Posse

LAW ENFORCEMENT COMPLEX

Pontiac, Michigan

## POSSE ACTIVITY 1974

<u>Activity:</u>	<u>Man hours</u>
Mounted	792
Includes:	
Participation in parades and drills	
Security patrol at fairs, races, horse shows and other public gatherings.	
Escort for March of Dimes workers	
Represented Oakland County at the state wide Michigan Sheriff's Posse Association Annual Campout, and at Michigan Week observances.	
Non-Mounted	815
Includes:	
Security patrol at fairs, races, horse shows, and other public gatherings.	
Assigned duty	657
Includes:	
Riding as second man in road patrol, S.C.A.T., and S.O.C. cars.	
Performing hospital watch of prisoners.	
Service of civil papers.	
Training	589
Includes:	
Firearms use and proficiency	
Criminal and civil law	
Advanced first aid	
Traffic and crowd control	
Self defense tactics	
Law officer psychology	
Conservation law	
Crime scene protection and investigation	
Report writing	
Total hours	2,853

Respectfully submitted,  
A. H. Schuon, Posse secy.

Special Services



Lt. Billy Nolin

## "TOURS AND TALKS"

Another service provided the public by this department is that of Tours and Talks.

People are greatly interested in their local government, and one way to learn of the various agencies is to personally visit them.

Tours of the jail complex are extremely popular to schools, churches, civic groups and colleges.

A great many people have never seen the inside of a jail or police agency and do not really know all the services it provides.

Tours of the jail complex are given throughout the week during business hours. During the tour the tour-guide explains the functions of each office within the jail complex.

A total of 111 tours were given attended by 2,683 people.

SHERIFF'S DEPT. - CIVIL DIVISION

Annual Report for 1974

Number of Sheriff Docket Sheets for years:

1969	5097		
1970	5704	Increase	607
1971	6215	Increase	511
1972	7240	Increase	1,025
1973	7500	Increase	260
1974	7702	Increase	202

---

Sheriff Fees Collected:

1969	\$28,487.37
1970	35,478.69
1971	41,705.14
1972	43,509.30
1973	41,544.02
1974	48,282.19

---

Sheriff's Mortgage Foreclosure Sales:

1969	238		
1970	456	Increase	218 Sales
1971	731	Increase	275 Sales
1972	1,091	Increase	360 Sales
1973	888	Decrease	203 Sales
1974	718	Decrease	170 Sales

---

Cash Amounts involved in Mortgage Sales:

1969	\$ 3,218,103.25
1970	7,806,564.77
1971	14,303,115.59
1972	21,872,773.65
1973	30,345,625.83
1974	23,153,425.73

---

Number of Indigent Cases Handled - No Charge for Service:

1972	348
1973	617
1974	452

---

Executions turned over to Sheriff for Collection:

1969	447
1970	524
1971	605
1972	594
1973	570
1974	462

---

Number of Levys placed on Real Estate during years:

1971	41
1972	58
1973	60
1974	52

*Chief Walter R. Jones*

DRIVER LICENSE BUREAU

APPLICATIONS PROCESSED:	<u>1973</u>		<u>1974</u>	
	<u>LIC. ISSUED</u>	<u>TOTAL AMT.</u>	<u>LIC. ISSUED</u>	<u>TOTAL AMT.</u>
ORIG OPER.	845	4176.00	547	3192.00
ORIG CHAUF.	570	2280.00	430	1720.00
RENEW OPER.	18,965	83101.50	14,381	65155.50
RENEW CHAUF.	956	10516.00	591	13468.50
DUPLICATES	1702	2197.50	1831	2136.00
CORRECTIONS	1582	731.50	1080	532.00
ORIG CYCLE	1204	3612.00	650	1950.00
RENEW CYCLE	522	783.00	840	1260.00
MINOR ORIG OPER.	641	2094.00	445	2580.00
MINOR RENEW OPER.	8	31.50	5	22.50
MINOR DUP.	324	444.00	339	451.50
MINOR CORR.	147	65.00	134	66.00
CHAUF T.I.P.	1	4.00	5	20.00
OPER T.I.P.	588	3528.00	447	2676.00
MINOR T.I.P.	1996	11976.00	1343	8058.00
CYCLE T.I.P.	0	.00	2	6.00
RENEW T.I.P.	7	31.50	2	9.00
PENALTY FEE	932	1864.00	583	1166.00
PAID PERMITS	2299		1653	
TOTALS	60,631	\$127,435.50	23,969	\$104,469.00

TESTS:	<u>1973</u>		<u>1974</u>	
	PASS	FAIL	PASS	FAIL
ORIG-ADULT & MINOR	3,940	83	2,820	67
ORIG-CHAUF ADLT & MINOR	580	20	446	11
RENEW TEST	19,543		15,854	
CYCLE TEST	1,392	49	876	24
ROAD TEST AUTO	256		1,245	87
ROAD TEST CYCLE	402	1	612	
ADDRESS CHANGES	4,975		3,777	
TELETYPES, FEE & NO FEE	12,251	....\$2,069.00	12,068	....\$1,889.00
VAL CERT	456			

Submitted,  
Ann Sach,  
Supervisor D.L.D.



## LIQUOR DIVISION

In the year 1974, eight complaints were handled for outside police departments as follows:

Three complaints were handled for Wixom Police Department. While investigating these complaints, four arrests were made for state law violations.

Two complaints were handled for Walled Lake Police Department. These investigations resulted in four arrests for bottomless dancing at the Camolet in the city of Walled Lake.

Two complaints were assists to the Pontiac City Police Department.

One complaint was an investigation in the Township of Waterford.

Jim W. Fisk, Det/Sgt.  
Liquor Enforcement

ACTIVITIES OF THE LIQUOR DIVISION FOR THE YEAR 1974

TO: Lt. Bill Nolin - Special Services

DATE: January 18, 1975

Approval of Class C license transfers	9
Approval of SDD license transfers	2
Approval of SDM license transfers	7
Approval of New Class C license	3
Approval of New Tavern license	0
Approval of New SDD license	4
Approval of New SDM license	15
Approval of New Club license	1
Approval of Wholesale Beer and Wine license	2
Approval of permits to expand or change present license	36
Total #1800 forms processed	79
Special 24-hour Beer and Wine permits issued	65
Special 24-hour Dance permits issued	4
Total Special permits processed	69
Complaints Investigated	251
Warnings Issued	62
Violations Issued	3
Liquor Establishment Inspections Made	1625
Arrests	10
Total miles driven by Liquor Division	19,757
Expenditure of Funds	\$680

TOTALS ARE LISTED ON THIS FRONT PAGE, ATTACHED COPIES ARE  
TOWNSHIPS LISTED SEPARATELY.

Technical Services



Lt. Lewis M. Doyle, Jr.

LAW ENFORCEMENT INFORMATION NETWORK

ANNUAL REPORT 1974

	<u>1973</u>	<u>1974</u>
O.C.S.D. broadcasts.....	1389	2504
" cancellations.....	1877	930

WARRANTS

(entered and cancelled)

	<u>1973</u>		<u>1974</u>	
	ent	- canc	ent	- canc
O.C.S.D. ....	1063	1207	1271	1163
Oakland Univ. P.D.....	20	14	12	4
Orchard Lake P.D. ....	188	131	145	148
Oxford P.D. ....	75	55	39	52
Pontiac Twp. P.D. ....	65	42	176	93
Rochester P.D. ....	47	54	149	111
Sylvan Lake P.D. ....	20	13	40	32
Walled Lake P.D. ....	99	55	56	53
Wolverine Lake P.D. ....	27	45	--	--
Bloomfield Hills P.D. ....	204	179	133	152
Brandon Twp. P.D. ....	10	2	25	13
Franklin Village P.D. ....	1	1	2	2
Independence Twp. P.D. ...	--	--	2	0
Holly P. D. ....	20	21	--	--
Keego Harbor P. D. ....	101	88	79	78
Lake Orion P. D. ....	106	73	108	95
Friend of the Court .....	<u>681</u>	<u>638</u>	<u>981</u>	<u>766</u>
Totals	2,727	2,617	3,218	2,762

Dispatcher Nancy Hill (top), and L.E.I.N. (teletype) operators Ann Srbljan left, and Leila Carpenter (bottom).



IDENTIFICATION BUREAU

Scientific Crime Laboratory Activity

Annual Report

Original complaints.....	275
Total crime scene investigations.....	568
Total examinations .....	47,343
Total identifications .....	376

SECTIONAL BREAKDOWN:

Latent print examinations .....	46,788
Latent print identifications .....	119
Unknown dead identified .....	5
Suspects identified .....	41
Firearm and tool mark examinations .....	74
Firearm and tool mark identifications .....	66

Bomb and explosives disposal .....	9
Scenes .....	2
Devices .....	5
Fakes .....	0

Narcotics and dangerous drugs	
Examinations .....	258
Identifications .....	200

Fire Investigations	
Arsons .....	21
Accidental .....	24
Undetermined .....	9

Physical match	
Examinations .....	0
Identifications .....	0

Photographs taken	
Black and white .....	4,110
Color .....	507

Miscellaneous examinations .....	60
----------------------------------	----

Guns Registered:	<u>1971</u>	<u>1972</u>	<u>1973</u>	<u>1974</u>
	2,653	2,285	2,344	2,627

Submitted by,  
Donald F. McLaughlin,  
I.D. Technician II



A change in careers was accomplished by Jack Ryan, who transferred from the Corrections Division to the Crime Lab upon completion of a course in Applied Science.

Arson Investigation Breakdown:

Total number of fire scenes investigated.....	56
Fire deaths investigated .....	7
Cause of death:	
Careless smoking .....	6
Overloaded extension cord.....	1
Cause of fires:	
Set fires (arson) .....	17
Bad wiring .....	5
Extension cords .....	3
Furnaces .....	2
Careless smoking .....	2
Light bulb .....	1
Light plug .....	1
Lightening .....	1
Space heater .....	1
Undetermined causes .....	9
Car fires (arson-4) .....	12

Five fires were over \$100,000.00, they were:

1. January 10, 1974 Pontiac Township	Old Dutch Mill \$135,000.00
2. April 22, 1974 Pontiac Township	Church's Lumber Co. \$400,000.00
3. December 9, 1974 Avon Township	610 Birch Tree ct. \$100,000.00
4. December 23, 1974 Brandon Township	Ortonville Hotel \$200,000.00
5. December 28, 1974 Bloomfield Township	S & G Sporting Goods \$300,000.00

Fire Departments that received assistance from arson unit:

1. Addison Township	12. Orion Township
2. Avondale	13. Oxford Township
3. Bloomfield Hills	14. Pontiac Township
4. Bloomfield Township	15. Rochester
5. Brandon Township	16. Springfield Township
6. Brookland	17. Walled Lake
7. Independence Township	18. White Lake Township
8. Commerce Township	19. Tri-City
9. Highland Township	20. Wixom
10. Holly	21. Groveland Township
11. Milford Township	



Arson Investigation contd.....

Arson and Fire Investigation classes were given by this unit and over 300 firemen attended through-out Oakland County.

Total amount of overtime by this unit was 42 hours.

The total amount of fire damage investigated by this unit was \$1,717,000.00. Of this amount there is \$190,000.00 which was not paid to the insured because this unit found there had been a set fire (arson).

Submitted by,  
Nelson L. Gelinis,  
I.D. Technician II

PATROL SERVICES TRAINING  
1974

Number of Road Patrol Personnel Attending In-Service Training, 1974	102
Number of Road Patrol Personnel Attending Outside Schools, 1974	27
Total Hours Spent in Training	1,766

DEPUTIES ATTENDING SCHOOLS  
OUTSIDE OF DEPARTMENT

Name	Course
Jerry Girard	Traffic Studies Macomb Comm. College
Gary Sheldon	Traffic Studies Macomb Comm. Coll.
Dave Crittendon	Evidence Technician Macomb Comm. Coll.
Len Schell	Evidence Technician Macomb Comm. Coll.
Mike Poet	Evidence Technician Macomb Comm. Coll.
Gary Holtz	Control. Sub. & Confess. S/E Regional, Ann Arbor
Keith Brodkorb	Control. Sub. & Confess. S/E Regional, Ann Arbor
Dave O'Connor	Control. Sub. & Confess. S/E Regional, Ann Arbor
John Taylor	Police Instructor Train. Marygrove College
John Taylor	Family Disturb. Inter. Macomb Comm. Coll.
Leary Johnson	Advanced Police Train. Oakland Police Acad.
John Taylor	Advanced Police Train. Oakland Police Acad.
Fred Herman	Family Disturb. Inter. Macomb Comm. Coll.
Walter Riley	Family Disturb. Inter. Macomb Comm. College
Doug Hummel	Family Disturb. Inter. Macomb Comm. College
John Lamberton	Family Disturb. Inter. Macomb Comm. College
Charles Eno	Family Disturb. Inter. Macomb Comm. College
Robert Beno	Family Disturb. Inter. Macomb Comm. College

DEPUTIES ATTENDING SCHOOLS  
OUTSIDE OF DEPARTMENT

(Continued)

<u>Name</u>	<u>Course</u>
Larry Miller	Crime Prevention Macomb Comm. Coll.
Len Schell	Crime Prevention Macomb Comm. Coll.
Patrick Miles	Adv. Pol. Off. Train. Macomb Comm. Coll.
James Lehtola	Adv. Pol. Off. Train. Macomb Comm. College
Gerald Asher	Adv. Pol. Off. Train. Macomb Comm. College
Harold Squires	Adv. Pol. Off. Train. Oakland Comm. Coll.
Tom Strong	Adv. Pol. Off. Train. Oakland Comm. Coll.
Anthony Velat	Advanced Pol. Off. Oakland Comm. Coll.
James Curtis	Seminar, Patrol, Washington

OFFICERS THAT HAVE ATTENDED  
CRIME PREVENTION SCHOOL TO DATE

Larry Miller, Macomb Comm. College  
Len Schell, Macomb Comm. College  
Ken Oman, Macomb Comm. College  
Dan Daniel, Macomb Comm. College  
Fred Herman, Macomb Comm. College  
Robert Potts, Macomb Comm. College

ADVANCED DRIVER EDUCATION COURSE

Cpl. Girard started a driver's training class. Thirty-two men from our department went through the Advanced Driver Education Course during 1974.

FIRING RANGE  
ANNUAL REPORT

During 1974 this department trained the following:

Oakland County Sheriff Employees:	234 personnel, trained aprox. 4 hours each 173,000 rounds used.
Oakland County Marine Div.:	40 officers trained aprox. 5 hours each, 8,300 rounds used.
Oakland County Sheriff's Posse:	29 officers, trained 5 hours each, 2,400 rounds used.
Oakland County Security:	11 officers trained aprox. 4 hours each.
Oakland County Animal Shelter:	11 officers trained aprox. 4 hours each.
Total Officers Trained.....	325
Total Hours.....	1,369

Other Departments:	Officers Trained:
Keego Harbor	5
Orchard Lake	3
Sylvan Lake	3
White Lake Twp. P.D.	9
Oakland County Comm.College	17
Detroit & Pontiac F.B.I.	14
U.S. Army Reserve Pistol Team	14
Holly P.D.	3
Pontiac Twp. P.D.	11
Oakland Univ. Dept. Public Saf.	14
Michigan State Police	47
Waterford Twp. P.D.	38
Milford P.D.	14
Alcohol, Tax & Firearms Div.	57

All of the above listed Departments averaged 2 hours per month in training.

Total Officer trained	249
Approximate time spent	498 hours

Hunter Safety Program:

This department put 460 boys and girls through the State required program. Time spent, 114 hours.

Oakland County Detention Officers:

This department trained and qualified a total of 21 Detention Officers. Time spent, 63 hours.

Lectures:

The Range Officer gave 11 lectures on gun safety to high school and junior high school students at local school camps during 1974 and 1 lecture to the Rochester Lions Club on weapons training in Oakland County Sheriff Department.

Firearms:

Handguns repaired	101
Shotguns repaired	12
Carbines repaired	3
Thompson Sub-Machine	<u>0</u>

Total 116

Handguns inspected and cleaned, 185  
Time spent, each handgun requires aprox. 10-15 minutes.

Long guns inspected and cleaned, 115  
Time spent, each long gun requires aprox. 15-20 minutes.

Gun Bluing:

During the year 1974 this department blued 53 hand guns at a cost to the Sheriff Department of \$154.00 or \$3.00 per gun (plus time spent). If they had been blued under an outside contract it would have cost the Sheriff Department a total of \$1,855.00 or \$35.00 per gun.

Ammunition:

Ammunition Produced:	175,000 rounds
.38 cal. wadcutter (training)	173,000 rounds
.357 cal. H.J.-H.P. (duty use)	2,000 rounds

Supplies Used:

Targets	2,750
Cleaning Fluid	5 gallons
Oil	6 cases
Patches	13,000
Cleaning Brushes	300

PROPERTY AND EVIDENCE

ANNUAL REPORT

Property and Evidence Received during 1974:

Property tags issued	1,289
Articles received	4,278

Disposition of above property:

Returned to owner	903
Property destroyed	3,206
Articles auctioned	436
Other	<u>54</u>
Total	4,599

Property held:

Presently hold 4,060 items as evidence, found property, recovered goods, etc. on 1,463 hold tags.

Submitted by,  
David Vernier,  
Property Officer

POLYGRAPH LABORATORY

ANNUAL REPORT

Scheduled appointments	507
Examinations conducted	272
Truthful persons examined	88
Deceptive persons examined	73
Indefinite examinations	2
Confessions received	27
Pre-employment examinations	82
Scheduled appts. for Sheriff Department	167
Scheduled appts. for outside agencies	340
In service classes	3
Other lectures	3

Down time:

Two weeks for reconstruction of the polygraph suite.  
Two weeks for annual leave days.  
One week for polygraph school.

The pre-employment tests conducted were for evaluation purposes only and the above figures do not reflect any confessions or admissions obtained from these examinations.

Many of the persons that did not keep their scheduled appointments either pled guilty as charged, or confessed to the officer in charge of their case before they reached the Sheriff Department for their examinations. None of these figures are reflected in the above totals either.

Tax money saved by the County:

Confessions received in 1974 have an estimated savings to the taxpayer of around \$135,000.00. This is figured on the elimination of a Circuit Court trial which is estimated to cost at least \$5,000.00 each.

The needless followup work of detectives, crime lab personnel and the Prosecutor's Office in cases where the complainant is not telling the truth about his or her police report. The returning of stolen merchandise that would otherwise be deprived of its rightful owner.

The most important issue I believe is another thing that cannot be considered in dollar values and that is the freedom gained from jail or prison by a suspect who is not really involved in the case he is being charged with.

Crime Analysis is a "behind the scenes" activity. An unglorified but necessary position, gathering vital information for use within the department.

Crime patterns reflect the effectiveness of a police department and often indicates where manpower is most needed.

A sudden increase in any given crime category portends of laxity on the part of the citizen and a need for educating the public in deterring crime.

Just as important is the need to report crime when it happens.

Apathy towards crime and the criminal must end. Recent legislative action indicates a reversal in favor of the public.

The following pages are for your information.

Mabel I. Conerly,  
Director  
Crime Analysis Section



C.L.E.M.I.S. terminal operators Beverly Brown (bottom),  
and Dianne Dewey.



Annual activity report for Oakland County Sheriff Department.

Part I Crime:	<u>1973</u>	<u>1974</u>
Murder and Manslaughter....	8	7
Rape/attempt rape.....	42	41
Robbery.....	62	74
Assault.....	136	146
Burglary.....	1,271	1,722
Larceny.....	2,390	3,034
Theft, Motor vehicle.....	<u>193</u>	<u>415</u>
total	4,082	5,439
Part II Crime: (property crimes).....	3,141	4,237
Part III Crime: (moral, vice, social).....	9,952	10,077
other.....	<u>16,969</u>	<u>5,580</u>
GRAND TOTAL.....	34,144	25,333*

Part I crime arrests:	<u>1973</u>		<u>1974</u>	
	Juv	Adult	Juv	Adult
Murder and Manslaughter....	0	6	0	6
Rape/attempt rape.....	1	11	0	5
Robbery.....	7	6	7	33
Assault.....	2	29	1	32
Burglary.....	59	29	33	61
Larceny.....	46	29	36	70
Theft, Motor vehicle.....	<u>3</u>	<u>3</u>	<u>8</u>	<u>9</u>
total	118	113	85	217
other arrests	<u>118</u>	<u>795</u>	<u>129</u>	<u>1,494</u>
GRAND TOTAL	236	908	214	1,711

\* 1974 does not include activity log incidents.

O.C.S.D.

Activity report for period ending December 31, 1974 (Annual)

1. Traffic information:

Accidents:	<u>1973 YTD</u>	<u>1974 YTD</u>
P.I.....	1461	1283
H/R P.I.....	5	17
P.D.....	3121	2644
H/RP.D.....	135	199
Private property.....	67	164
Fatals.....	27	27
	<hr/>	<hr/>
total.....	4815	4334
Misc. traffic complaints	342	49
Citations issued..... (by townships)		
Avon.....	1318	899
Brandon.....	42	11
Commerce.....	1169	986
Groveland.....	106	71
Holly.....	111	71
Highland.....	788	662
Independence.....	898	814
Lyon.....	0	0
Milford.....	99	64
Orion.....	885	636
Oxford.....	171	164
Rose.....	17	10
Springfield.....	332	247
White Lake.....	361	228
	<hr/>	<hr/>
Total Citations issued	6297	4863

2. Marine or Sno-mobile information:

Accidents:		
P.I.....	41	21
P.D.....	25	36
Fatals.....	0	0
	<hr/>	<hr/>
total	66	57
Citations issued.....	684	1412

## O.C.S.D.

## Monetary loss

Robbery:	
Robbery armed - any weapon	\$ 2,530
Robbery - strong arm	251
Burglary:	
Burglary - forcible entry	\$ 438,611
Burglary - unlawful entry	16,228
Burglary - attempted (damage to doors, windows)	1,635
Larceny:	
Larceny - pocket picking	\$ 194
Larceny - purse snatching	500
Larceny - shoplifting	758
Larceny - from motor vehicle	110,708
Larceny - auto parts, accessories	23,083
Larceny - from watercraft	2,827
Larceny - bicycles	17,477
Larceny - from building(excludes burglary)	9,664
Larceny - from coin machines	225
Larceny - of watercraft	15,578
Larceny - all others	187,876
Auto Theft:	
Theft, motor vehicle	\$ 180,532
Theft, motor cycles	66,828
Theft, mini bikes	1,390
Forgery/Counterfeiting:	
Forgery - U & P check	\$ 254,779
Forgery - credit cards	0
Forgery - other	0
Fraud:	
Fraud - no acct/nsf checks	\$ 721
Fraud - failure to pay	44
Fraud - other	0
Embezzlement:	
Embezzlement	\$ 690
Vandalism	
Vandalism - M.D.O.P.	\$ 87,573
<hr/>	
DEPARTMENT GRAND TOTAL	\$1,420,702

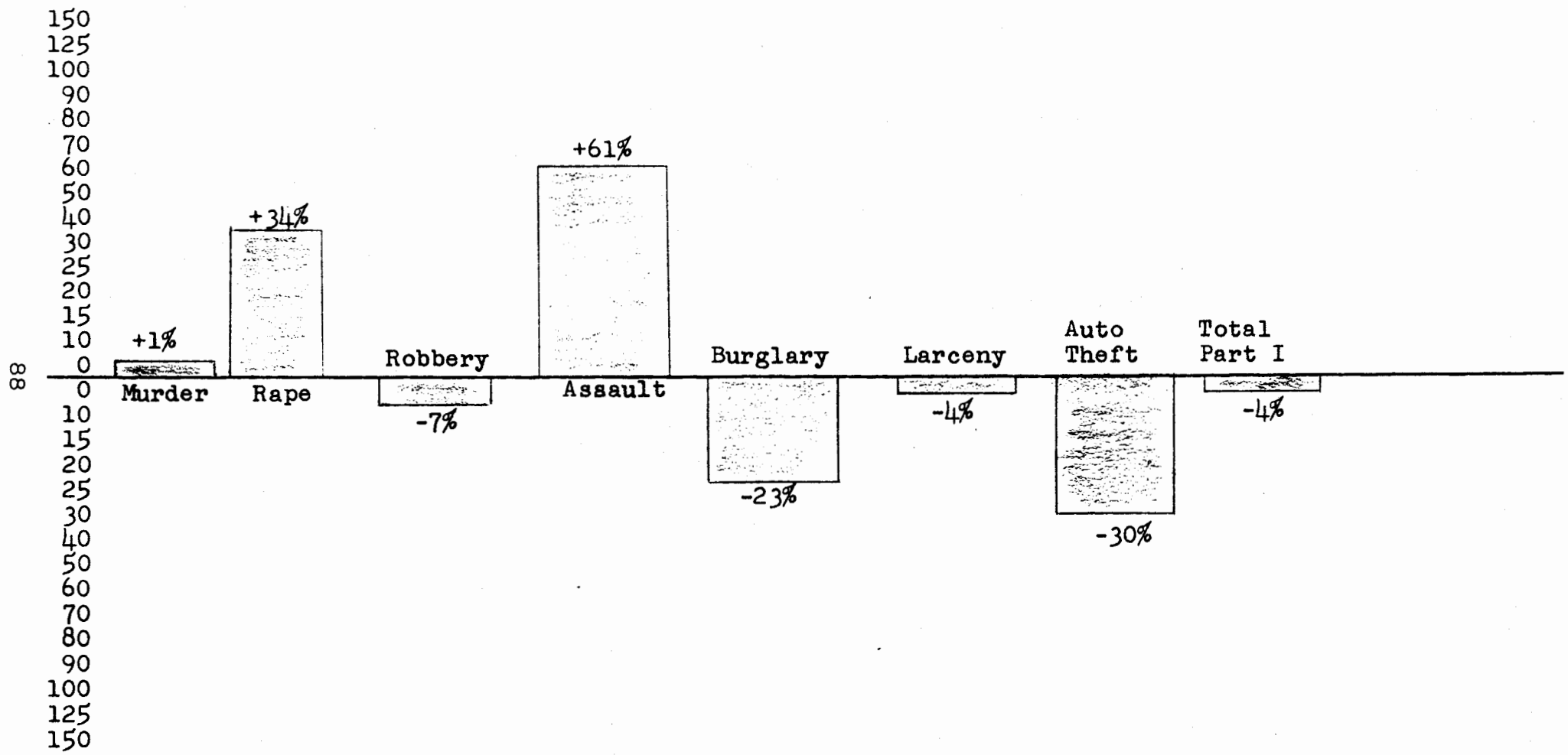
O.C.S.D.

Monetary Recovery

Robbery:		
Robbery armed - any weapon	\$	5,027
Burglary:		
Burglary - forcible entry	\$	4,735
Burglary - unlawful entry		2,757
Larceny:		
Larceny - pocket picking	\$	5
Larceny - shoplifting		5
Larceny - from motor vehicle		10,929
Larceny - auto parts, accessories		42
Larceny - bicycles		2,029
Larceny - from building(excludes burglary)		238
Larceny - of watercraft		250
Larceny - all others		7,825
Auto Theft:		
Theft - motor vehicle	\$	78,000
Theft.- motor cycles		7,168
Theft - mini bikes		540
DEPARTMENT GRAND TOTAL		\$119,550

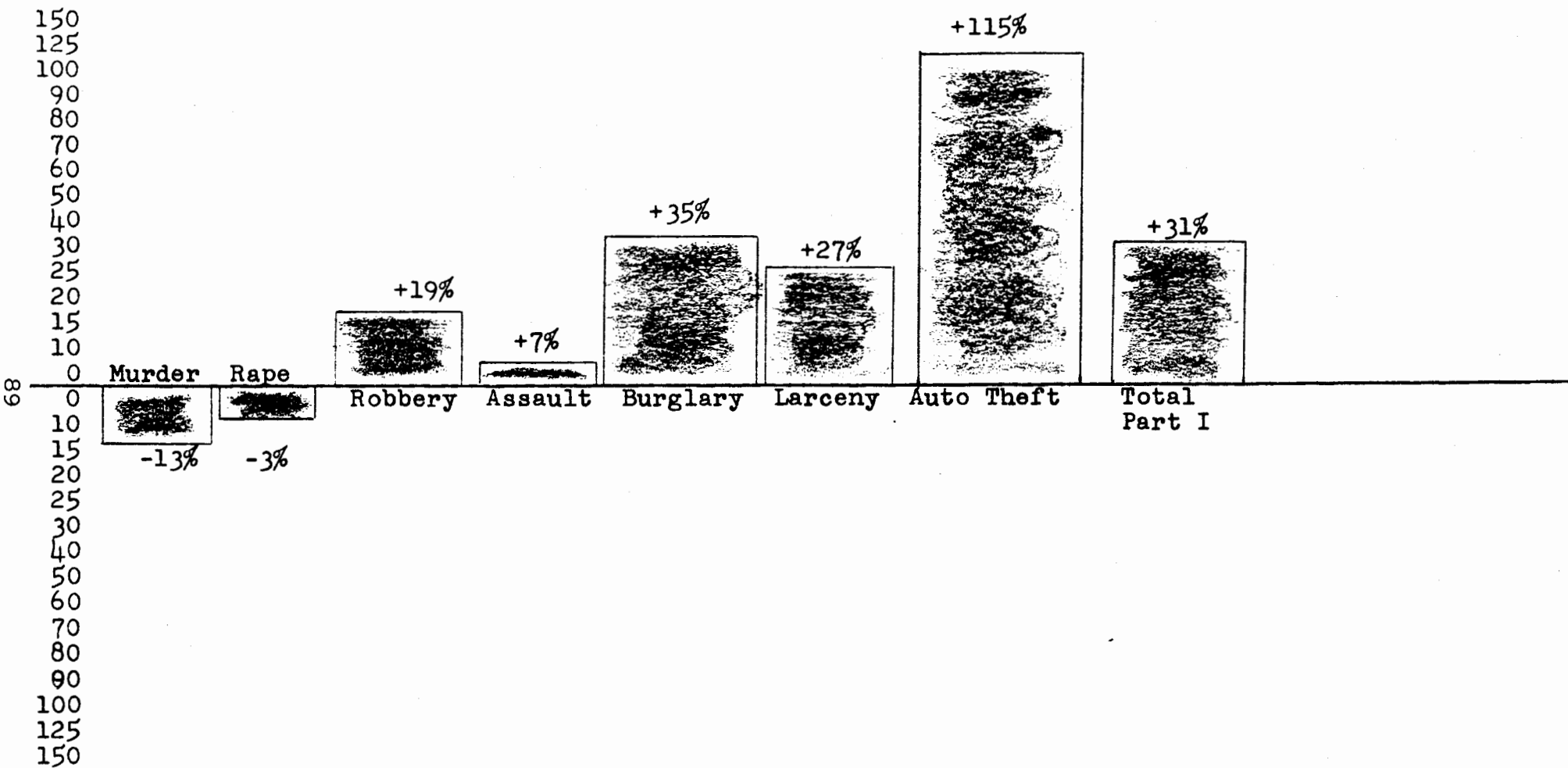
O.C.S.D.

"PERCENTAGE INCREASE-DECREASE PART I CRIME, 1973"



O.C.S.D.

PERCENTAGE INCREASE -DECREASE PART I CRIME, 1974



PART I CRIME FOUR YEAR COMPARISON

1971

Murder	4
Rape	40
Robbery	53
Assault	90
Burglary	1,683
Larceny	2,111
Auto theft	115
	<u>4,096</u>

1972

Murder	5	+ 25%
Rape	37	- 8%
Robbery	68	+ 28%
Assault	92	+ 2%
Burglary	1,477	- 12%
Larceny	2,334	+ 11%
Auto theft	237	+106%
	<u>4,250</u>	+ 4%

1973

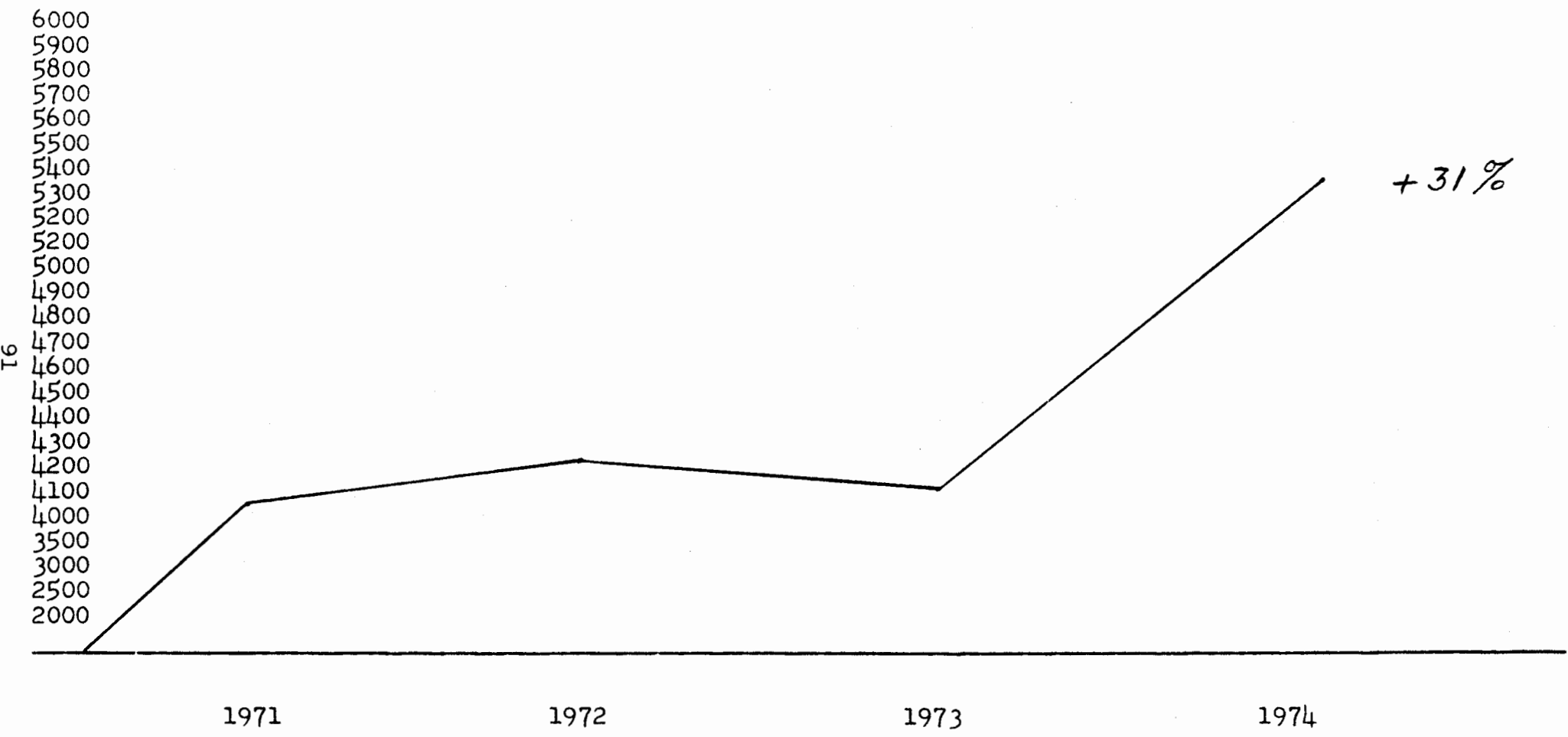
Murder	8	+ 60%
Rape	42	+ 14%
Robbery	62	- 9%
Assault	136	+ 48%
Burglary	1,271	- 14%
Larceny	2,390	+ 2%
Auto theft	193	- 19%
	<u>4,102</u>	- 3%

1974

Murder	7	- 13%
Rape	41	- 3%
Robbery	74	+ 19%
Assault	146	+ 7%
Burglary	1,722	+ 35%
Larceny	3,034	+ 27%
Auto theft	415	+115%
	<u>5,439</u>	+ 31%

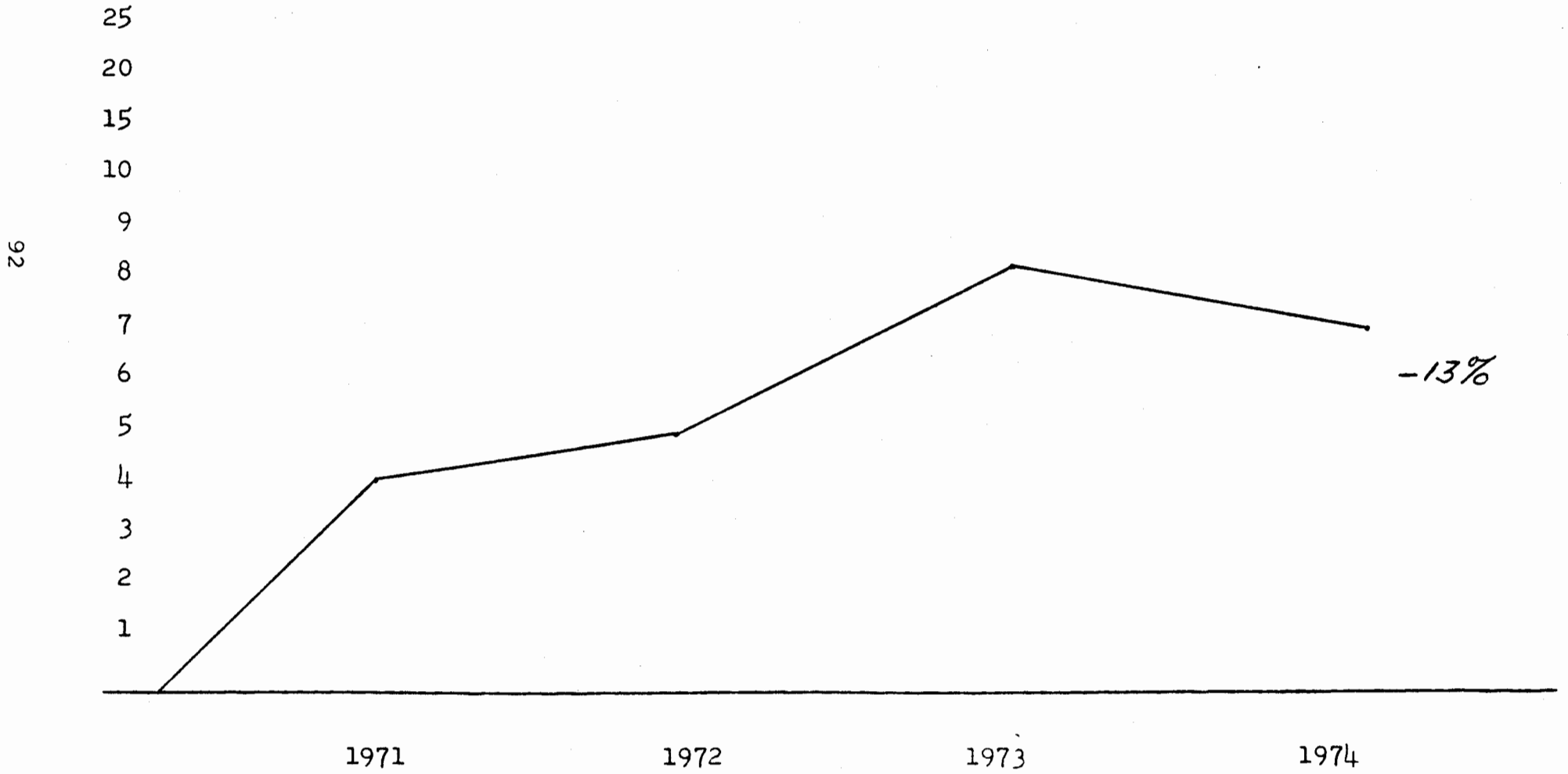


O.C.S.D.  
PART I CRIME



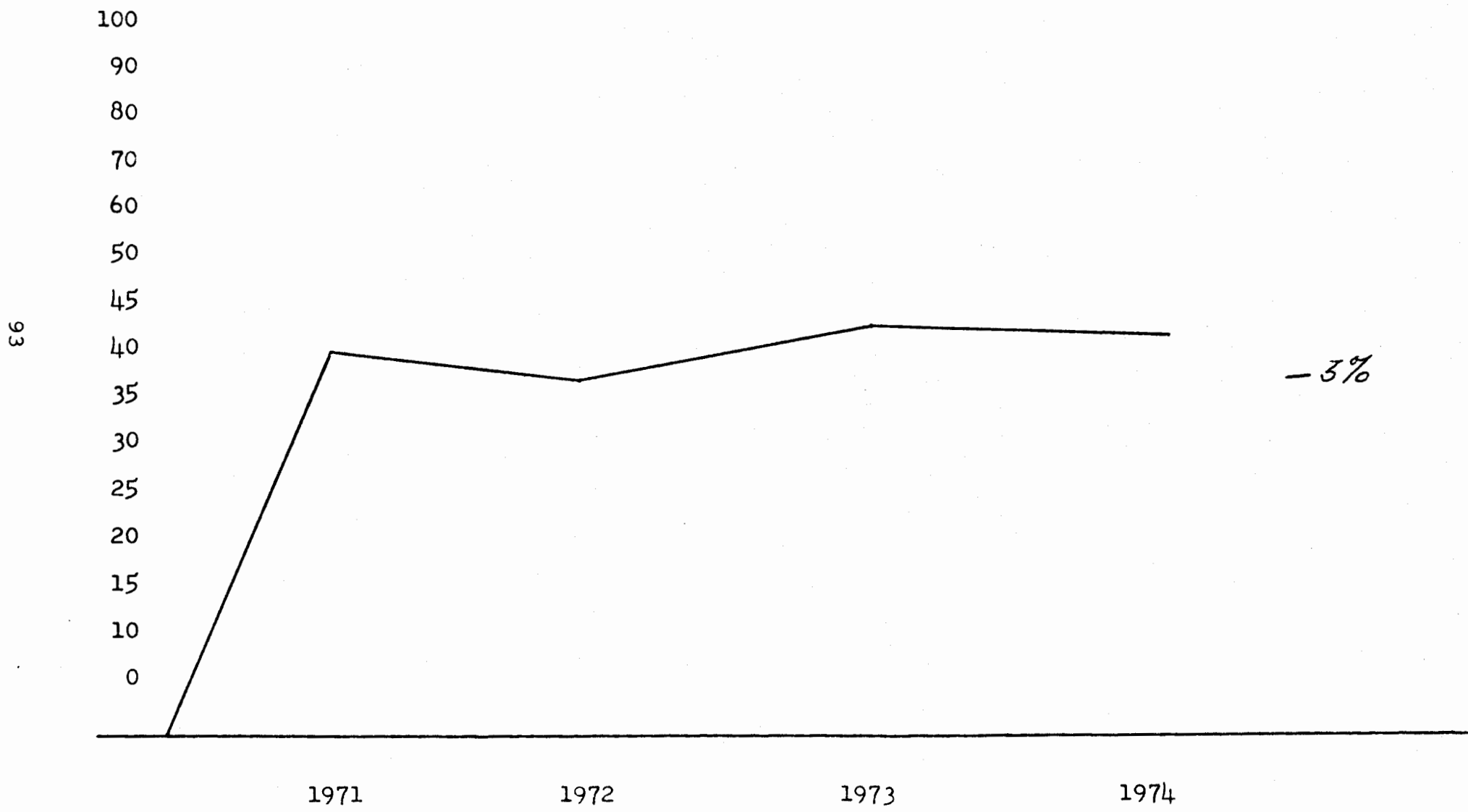
O.C.S.D.

MURDER

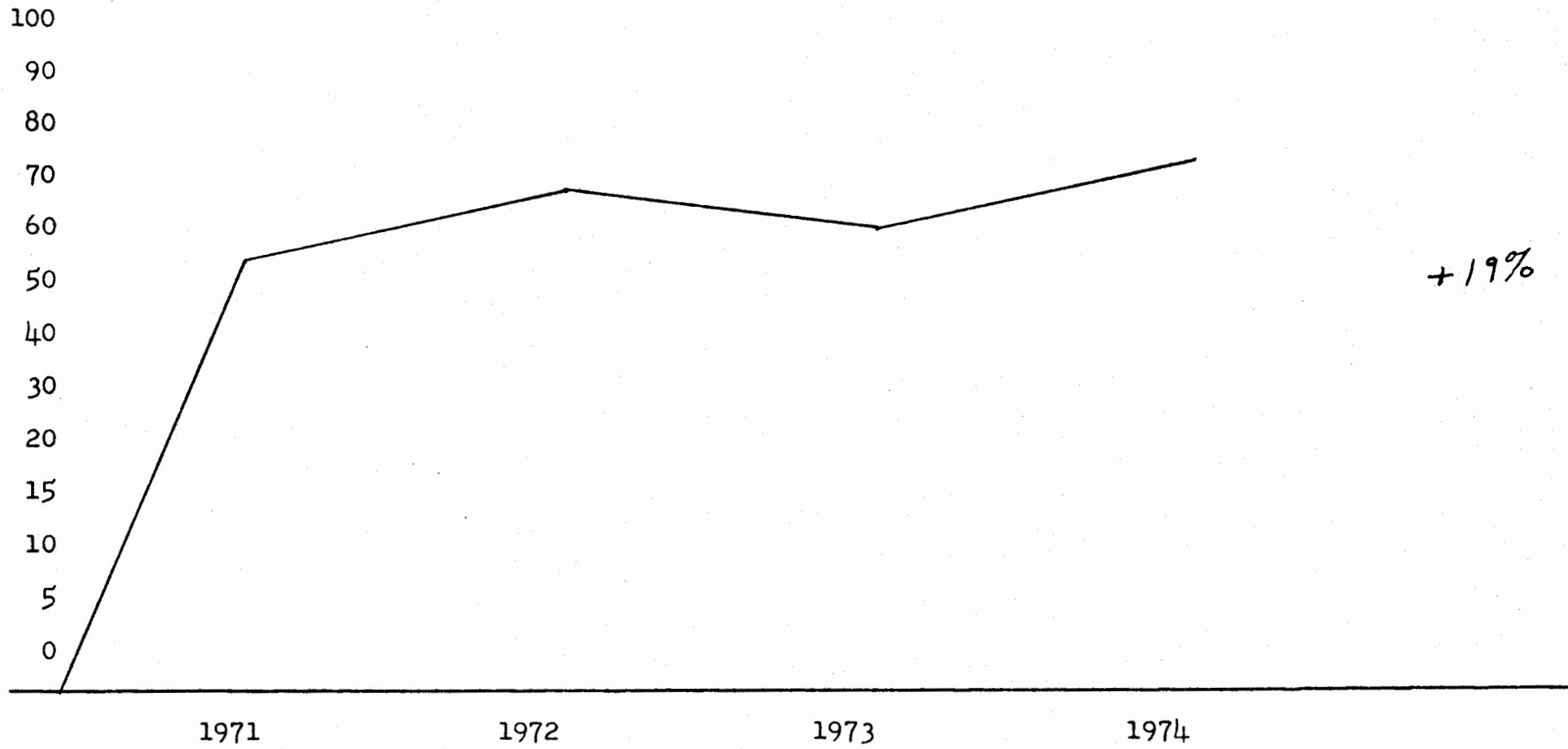


O.C.S.D.

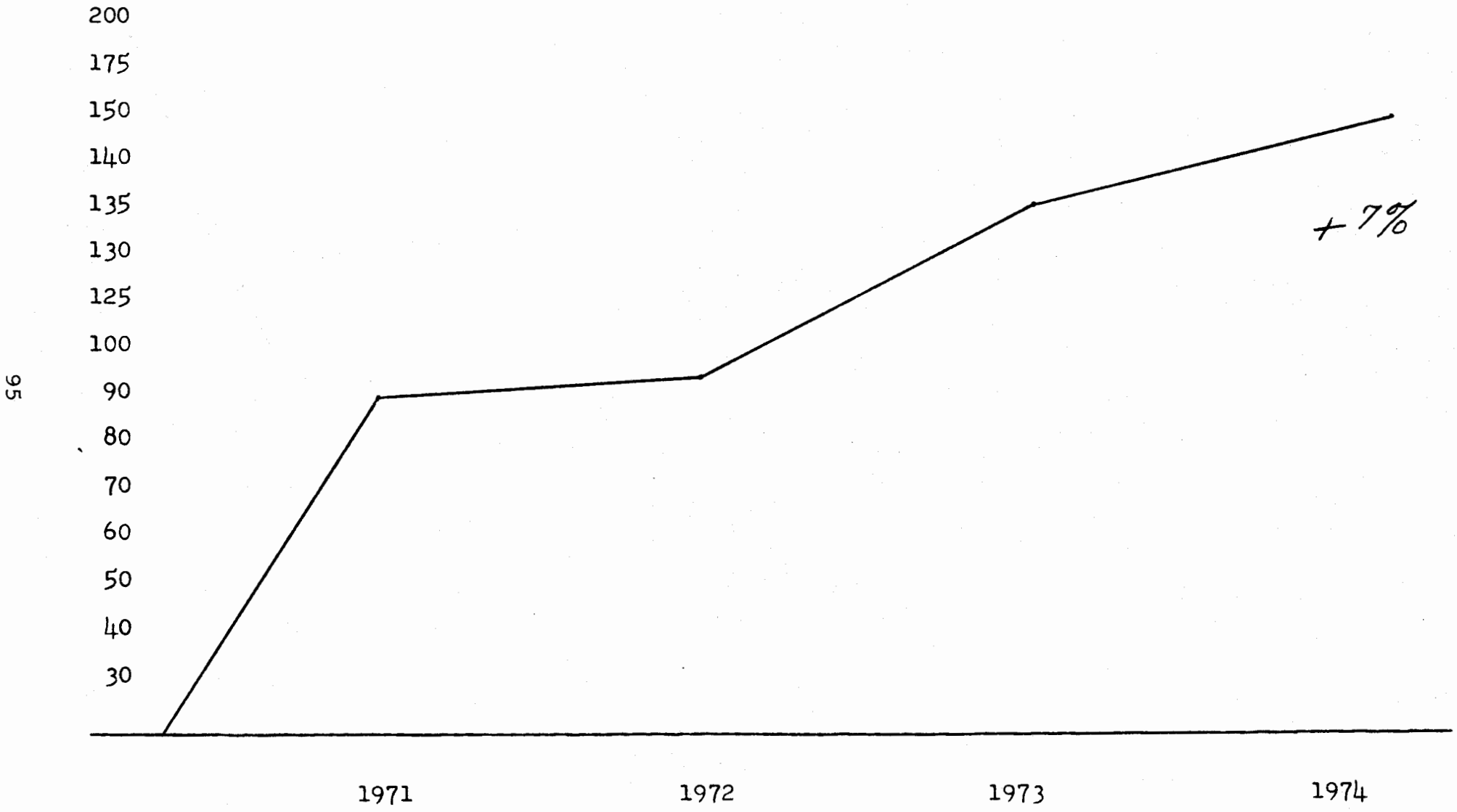
RAPE



O.C.S.D.  
ROBBERY

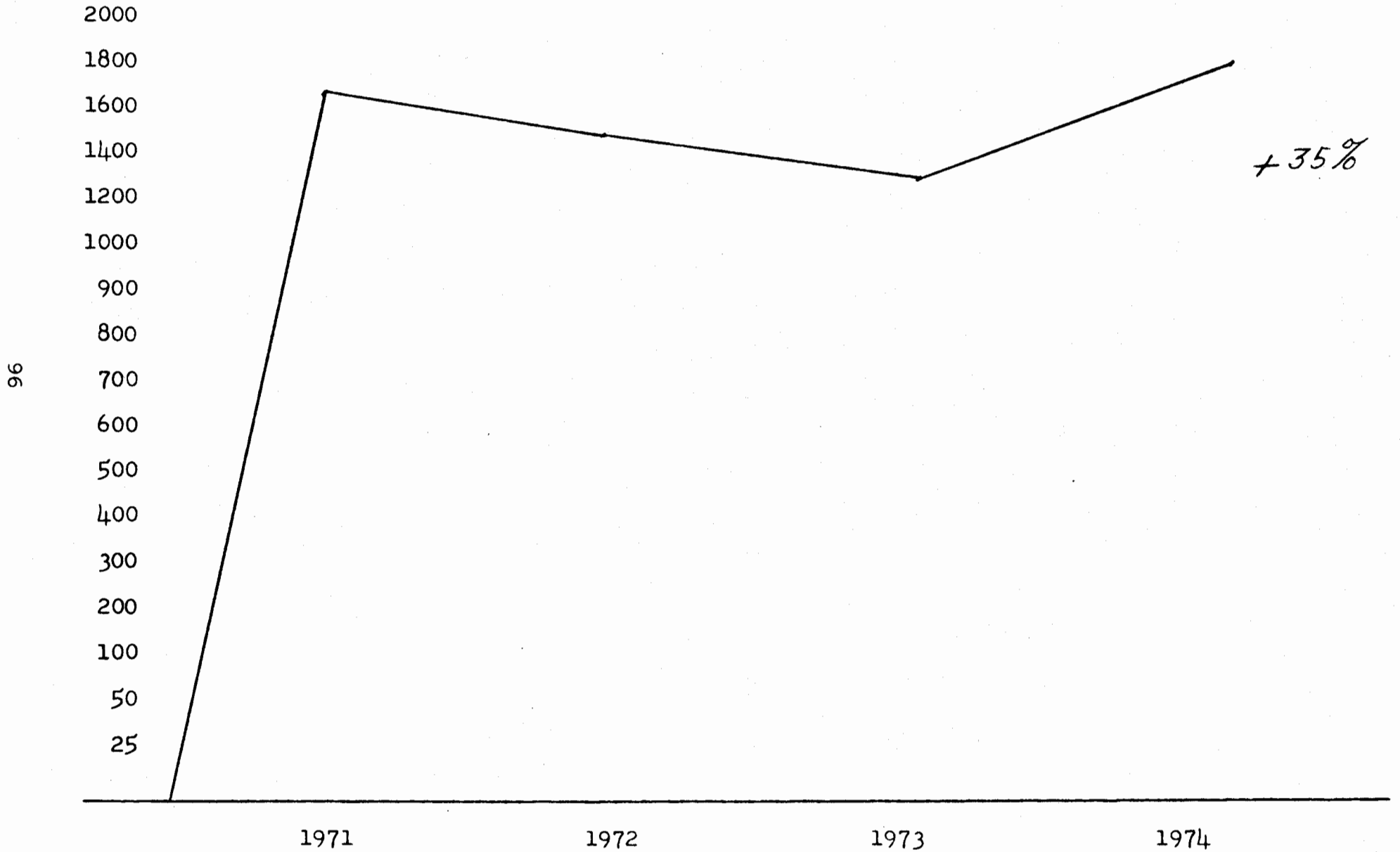


O.C.S.D.  
ASSAULT



O.C.S.D.

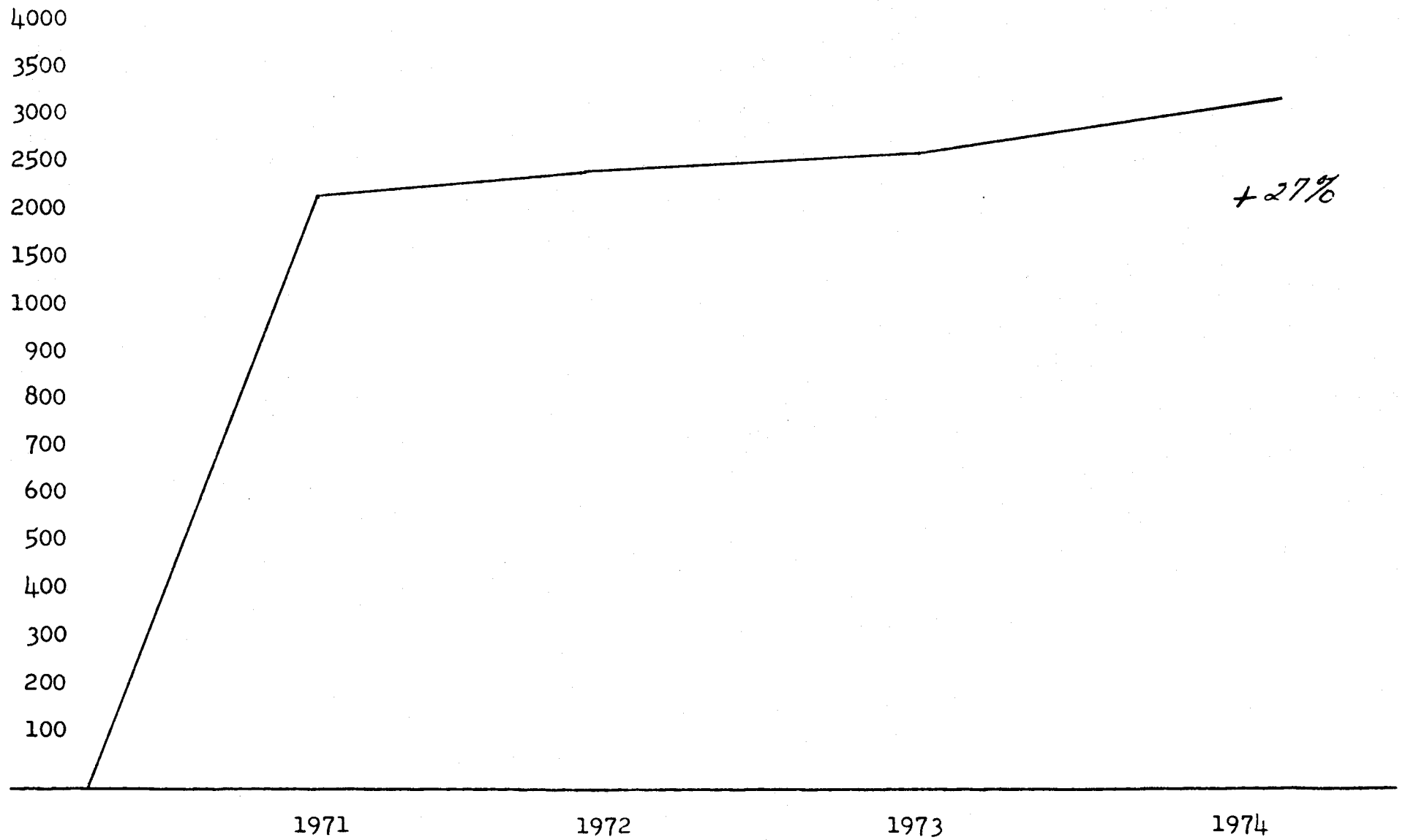
BURGLARY



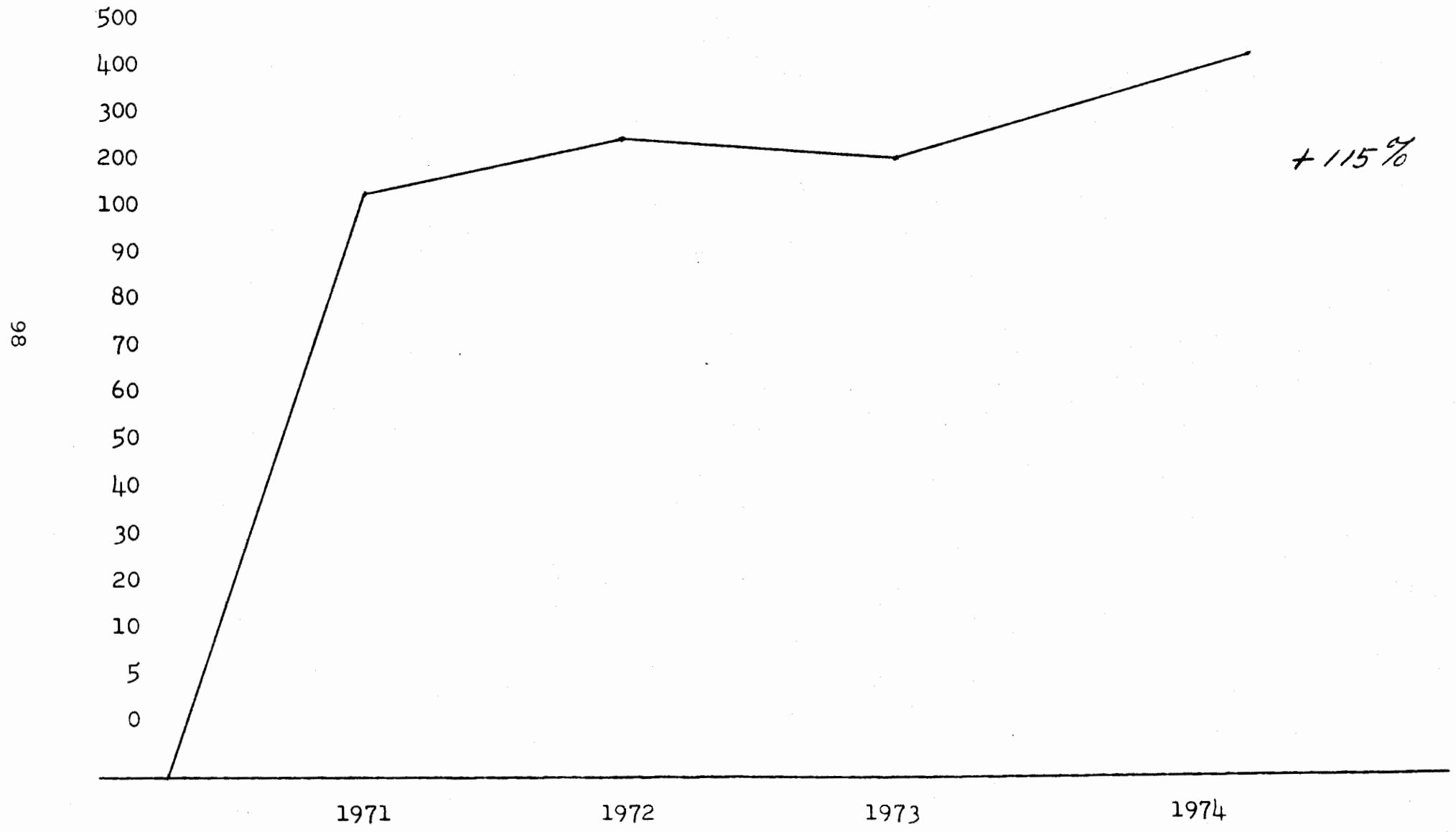
O.C.S.D.

LARCENY

97



O.C.S.D.  
AUTO THEFT





LAW ENFORCEMENT

Ratio Increase-decrease in related areas

200 %  
175  
170  
165  
160  
155  
150  
145  
140  
135  
130  
125  
120  
115  
110  
105  
100  
95  
90  
85  
80  
75  
70  
65  
60  
55  
50  
45  
40  
35  
30  
25  
20  
15  
10  
5  
0

Detectives				
Patrolmen				
Part I Crime	1971*			
Corrections Personnel				
Prisoners				
Detectives		+11%		
Patrolmen			+23%	
Part I Crime	1972*	+4%		
Corrections Personnel				+168%
Prisoners		+5%		
Detectives		+0%		
Patrolmen		+5%		
Part I Crime	1973*	-4%		
Corrections Personnel			+22%	
Prisoners			+19%	
Detectives		+33%		
Patrolmen		+4%		
Part I Crime	1974*		+31%	
Corrections Personnel				+44%
Prisoners		+9%		

(previous year not available)

YEAR END

TOWNSHIP ACTIVITY

TRAFFIC CITATIONS:

TOWNSHIPS	73	-	74	TOWNSHIPS	73	-	74
Addison .....	0	-	0	Novi .....	0	-	0
Avon* .....	1318	-	899	Oakland* .....	0	-	0
Bloomfield .....	0	-	0	Orion* .....	885	-	636
Brandon .....	42	-	11	Oxford .....	171	-	164
Commerce* .....	1169	-	986	Pontiac .....	0	-	0
Groveland .....	106	-	71	Rose .....	17	-	10
Highland* .....	788	-	662	Royal Oak .....	0	-	0
Holly .....	111	-	71	Springfield* .....	332	-	247
Independence* .....	898	-	814	Waterford .....	0	-	0
Lyon .....	0	-	0	West Bloomfield .....	0	-	0
Milford .....	99	-	64	White Lake .....	361	-	228

\*under contract

YEAR END 1974 TOWNSHIP ACTIVITY: PART I & TRAFFIC	Murder & Manslaughter	Rape & Attempts	Robberies	Assaults	Burglary & Attempts	Larcenies	Motor Vehicle Theft	P.I. Accidents	P.D. Accidents	TOTALS	
										73-74	73-74
Addison	0-0	1-0	1-2	1-2	33-9	28-8	2-2	23-9	41-14	130	46
Avon*	1-0	8-8	16-22	30-24	243-300	640-692	49-116	315-300	785-694	2087	2156
Bloomfield	0-0	0-0	0-0	0-0	2-0	5-6	1-1	0-3	6-6	14	16
Brandon	0-0	1-0	1-12	1-27	19-64	36-107	3-4	24-4	47-5	132	223
Commerce*	1-0	3-2	14-8	33-20	248-289	432-462	22-68	232-220	436-390	1421	1459
Groveland	1-1	1-0	1-0	1-3	27-38	52-62	2-4	33-40	52-49	170	197
Highland*	1-0	2-2	6-2	17-17	188-221	225-310	18-28	131-100	303-255	891	935
Holly	0-0	0-0	2-2	2-2	51-40	53-88	2-5	46-41	91-58	247	236
Independence	1-4	0-4	11-4	15-29	146-212	374-460	17-37	155-168	396-338	1115	1256
Lyon	0-0	0-0	0-1	0-0	0-1	2-0	0-0	4-1	3-2	9	5
Milford	0-0	0-0	0-0	0-0	3-0	8-5	2-1	6-2	7-9	26	17
Novi	0-0	2-0	0-0	0-0	3-2	3-0	0-1	0-5	5-3	13	11
Oakland*	1-0	1-6	1-2	6-2	36-52	33-50	5-14	47-52	88-86	219	264
Orion*	1-0	13-5	5-0	20-18	187-224	311-376	21-21	181-130	383-350	1122	1124
Oxford	0-1	4-0	3-5	9-6	50-102	129-151	14-24	79-73	141-139	429	501
Pontiac	1-1	3-2	4-5	10-5	11-5	40-23	7-8	34-22	76-42	186	113
Rose	0-0	0-0	0-0	1-1	32-28	37-45	3-6	21-23	29-31	123	134
Royal Oak	0-0	0-0	0-0	0-0	1-0	1-3	0-0	1-0	0-1	3	4
Springfield*	0-1	0-1	0-3	1-8	26-104	53-110	4-16	56-52	102-89	242	384
Waterford	0-0	0-4	0-1	2-2	8-6	36-31	3-5	21-11	52-32	122	92
West Bloomfield	0-0	1-0	1-0	1-1	4-1	11-21	0-2	12-2	21-10	51	37
White Lake	0-0	4-0	0-1	7-0	11-10	34-33	5-5	38-22	46-31	145	102
<b>TOTAL</b>										<b>8897</b>	<b>9312</b>

\* Under contract

From:  
 Oakland County Sheriff Department  
 To:  
 TOWNSHIP OF Avon

Activity report for period ending December 31, 1974 (Annual)

	1974	1973
Part I Crime:		
Murder and Manslaughter.....	0	1
Rape.....	7	8
Attempt Rape.....	1	0
Robbery.....	22	16
Assault.....	24	30
Burglary.....	300	243
Larceny.....	692	640
Theft, Motor vehicle.....	116	49
Narcotics*.....	24	57

**totals** 1186 1044

*Part II Crime: (property crimes).....	826	570
---	-----	-----

Part III Crime: (moral, vice, social)./. .....	2054	2078
---	------	------

other..... 0 117

**GRAND TOTAL**..... 4066 3811

**Part I crime arrests:** Juv / Adult Juv / Adult

Murder and Manslaughter .....	0	0	0	0
Rape.....	0	0	0	2
Attempt Rape.....	0	0	0	0
Robbery.....	0	2	0	2
Assault.....	0	4	1	5
Burglary.....	7	14	6	4
Larceny.....	9	29	21	20
Theft, Motor vehicle.....	0	4	0	0
Narcotics.....	1	15	2	14
other arrests.....	18	202	7	205

**TOTAL** 35 270 37 252

1974:

	<u>amount stolen</u>	<u>amount recovered</u>
Robbery..... \$	933.00	0.00
Burglary.....	56,748.00	2,732.00
Larceny.....	102,658.00	8,214.00
Auto theft.....	58,845.00	17,000.00
M.D.C.P. ....	23,920.00	0.00
<b>GRAND TOTAL</b>	<b>\$243,104.00</b>	<b>\$27,946.00</b>

TOWNSHIP OF Avon

Activity report for period ending December 31, 1974

Traffic information:

Accidents:

P.I.....	300	
H/R P.I.....	3	
P.D.....	694	
H/R P.D.....	37	
Private property.....	50	
Fatals.....	7	

total..... 1,091

Misc. traffic complaints.... 7

Citations issued..... 899

Sno-mobile Accidents:

P.I.....		
P.D.....		
Fatals.....		

total

Citations issued.....

From:  
 Oakland County Sheriff Department  
 To:  
 TOWNSHIP OF Commerce

Activity report for period ending December 31, 1974 (Annual)

	1974	1973
Part I Crime:		
Murder and Manslaughter.....	0	1
Rape.....	2	3
Attempt Rape. ....	0	0
Robbery.....	8	14
Assault.....	20	33
Burglary.....	289	248
Larceny.....	462	432
Theft, Motor vehicle.....	68	22
Narcotics.*.....	24	47

totals 873 799

Part II Crime: \*  
 (property crimes)..... 595 526

Part III Crime:  
 (moral, vice, social)./. .... 1587 1592

other..... 0 86

GRAND TOTAL..... 3055 3003

Part I crime arrests:	Juv	/ Adult	Juv	/ Adult
Murder and Manslaughter .....	0	0	0	0
Rape.....	0	0	0	0
Attempt Rape.....	0	0	0	0
Robbery.....	0	6	3	0
Assault.....	0	0	0	6
Burglary.....	7	7	8	11
Larceny.....	1	4	5	4
Theft, Motor vehicle.....	0	2	2	0
Narcotics.....	4	8	6	14
other arrests.....	17	167	7	204

TOTAL 29 194 31 239

	1974:	
	<u>amount stolen</u>	<u>amount recovered</u>
Robbery.....	\$ 105.00	\$ 0.00
Burglary.....	28,942.00	850.00
Larceny.....	62,002.00	2,445.00
Auto theft.....	62,087.00	7,400.00
M.D.O.P. ....	25,101.00	0.00
GRAND TOTAL	\$ 178,237.00	\$10,705.00

TOWNSHIP OF Commerce

Activity report for period ending December 31, 1974 (Annual)

Traffic information:

Accidents:

P.I.....	220	
H/R P.I.....	3	
P.D.....	390	
H/R P.D.....	32	
Private property.....	30	
Fatals.....	0	
	<hr/>	<hr/>
total.....	675	
Misc. traffic complaints....	13	
Citations issued.....	986	

Sno-mobile Accidents:

P.I.....		
P.D.....		
Fatals.....		
	<hr/>	<hr/>
total		
Citations issued.....		

From:  
 Oakland County Sheriff Department  
 To:  
 TOWNSHIP OF Highland

Activity report for period ending December 31, 1974 (Annual)

Part I Crime:	1974	1973
Murder and Manslaughter.....	0	1
Rape.....	2	2
Attempt Rape.....	0	0
Robbery.....	2	6
Assault.....	17	17
Burglary.....	221	188
Larceny.....	310	225
Theft, Motor vehicle.....	28	18
Narcotics.....*	42	57

**totals** 622 514

**Part II Crime: \***  
 (property crimes)..... 512 328

**Part III Crime:**  
 (moral, vice, social)./. ..... 1123 973

**other**..... 17 3

**GRAND TOTAL**..... 2274 1818

Part I crime arrests:	Juv	/ Adult	Juv	/ Adult
Murder and Manslaughter .....	0	0	0	0
Rape.....	0	1	0	0
Attempt Rape.....	0	0	0	0
Robbery.....	0	0	0	0
Assault.....	1	3	0	4
Burglary.....	6	7	16	0
Larceny.....	7	5	6	0
Theft, Motor vehicle.....	0	0	0	0
Narcotics.....	7	6	8	10
other arrests.....	7	126	15	81

**TOTAL** 28 148 45 95

	1974:	
	<u>amount stolen</u>	<u>amount recovered</u>
Robbery.....	\$ 0.00	\$ 0.00
Burglary.....	8,141.00	355.00
Larceny.....	31,790.00	3,040.00
Auto theft.....	27,536.00	15,300.00
M.D.O.P. ....	1,807.00	0.00

**GRAND TOTAL** \$69,274.00 \$18,695.00



TOWNSHIP OF Highland

Activity report for period ending December 31, 1974 (Annual)

Traffic information:

Accidents:

P.I.....	100
H/R P.I.....	3
P.D.....	255
H/R P.D.....	28
Private property.....	13
Fatals.....	4

total..... 403

Misc. traffic complaints.... 10

Citations issued..... 662

Sno-mobile Accidents:

P.I.....	
P.D.....	
Fatals.....	

total

Citations issued.....

From:  
 Oakland County Sheriff Department  
 To:  
 TOWNSHIP OF Independence

Activity report for period ending	December 31, 1974 (Annual)			
Part I Crime:	1974		1973	
Murder and Manslaughter.....	4		1	
Rape.....	3		0	
Attempt Rape.....	1		0	
Robbery.....	4		11	
Assault.....	29		15	
Burglary.....	212		146	
Larceny.....	460		374	
Theft, Motor vehicle.....	37		17	
Narcotics...*.....	10		22	
<b>totals</b>	<b>760</b>		<b>586</b>	
Part II Crime: (property crimes).....	<b>524</b>		<b>334</b>	
Part III Crime: (moral, vice, social)./. .....	<b>1232</b>		<b>1152</b>	
other.....	18		23	
<b>GRAND TOTAL.....</b>	<b>2534</b>		<b>2095</b>	
Part I crime arrests:	Juv	/ Adult	Juv	/ Adult
Murder and Manslaughter .....	0	3	0	2
Rape.....	0	1	0	0
Attempt Rape.....	0	0	0	0
Robbery.....	0	1	0	0
Assault.....	0	7	0	4
Burglary.....	4	4	5	7
Larceny.....	5	16	1	6
Theft, Motor vehicle.....	0	1	0	0
Narcotics.....	1	7	2	20
other arrests.....	10	167	5	160
<b>TOTAL</b>	<b>20</b>	<b>207</b>	<b>13</b>	<b>199</b>
	<u>amount stolen</u>		<u>amount recovered</u>	
Robbery.....	\$	100.00	\$	0.00
Burglary.....		309,793.00		40.00
Larceny.....		53,935.00		1,287.00
Auto theft.....		22,896.00		10,675.00
M.D.O.P. ....		15,518.00		0.00
<b>GRAND TOTAL</b>		<b>\$402,242.00</b>		<b>\$12,002.00</b>

TOWNSHIP OF Independence

Activity report for period ending December 31, 1974 (Annual)

Traffic information:

Accidents:

P.I.....	168	
H/R P.I.....	2	
P.D.....	338	
H/R P.D.....	23	
Private property.....	29	
Fatals.....	4	
	<hr/>	<hr/>
total.....	564	

Misc. traffic complaints.... 2

Citations issued..... 827

Sno-mobile Accidents:

P.I.....		
P.D.....		
Fatals.....		
	<hr/>	<hr/>

total

Citations issued.....

From:  
 Oakland County Sheriff Department  
 To:  
 TOWNSHIP OF Oakland

Activity report for period ending December 31, 1974 (Annual)

	1974	1973
<b>Part I Crime:</b>		
Murder and Manslaughter.....	0	1
Rape.....	5	1
Attempt Rape.....	1	0
Robbery.....	2	1
Assault.....	2	6
Burglary.....	52	37
Larceny.....	50	34
Theft, Motor vehicle.....	14	5
*Narcotics.....	1	4
<b>totals</b>	<u>127</u>	<u>89</u>
<b>*Part II Crime:</b>		
(property crimes).....	<u>94</u>	<u>70</u>
<b>Part III Crime:</b>		
(moral, vice, social)./. .....	<u>241</u>	<u>262</u>
other.....	11	20
<b>GRAND TOTAL.....</b>	<u>473</u>	<u>441</u>
<b>Part I crime arrests:</b>	<b>Juv / Adult</b>	<b>Juv / Adult</b>
Murder and Manslaughter .....	0 0	0 1
Rape.....	0 3	0 1
Attempt Rape.....	0 0	0 0
Robbery.....	0 0	0 0
Assault.....	0 5	0 0
Burglary.....	0 0	0 0
Larceny.....	0 0	0 0
Theft, Motor vehicle.....	0 0	0 0
Narcotics.....	0 0	0 2
other arrests.....	2 10	1 23
<b>TOTAL</b>	<u>2 18</u>	<u>1 27</u>
	<b>1974:</b>	
	<u>amount stolen</u>	<u>amount recovered</u>
Robbery.....	\$ 38.00	0.00
Burglary.....	3,360.00	0.00
Larceny.....	17,649.00	95.00
Auto theft.....	2,200.00	1,800.00
M.D.O.P. ....	6,660.00	0.00
<b>GRAND TOTAL</b>	<u>\$29,907.00</u>	<u>\$1,895.00</u>

TOWNSHIP OF Oakland

Activity report for period ending December 31, 1974 (Annual)

Traffic information:

Accidents:

P.I.....	52	
H/R P.I.....	1	
P.D.....	86	
H/R P.D.....	3	
Private property.....	2	
Fatals.....	1	
	<hr/>	<hr/>

total..... 145

Misc. traffic complaints.... 1

Citations issued..... 58

Sno-mobile Accidents:

P.I.....		
P.D.....		
Fatals.....		
	<hr/>	<hr/>

total

Citations issued.....

From:  
 Oakland County Sheriff Department  
 To:  
 TOWNSHIP OF Orion

Activity report for period ending December 31, 1974 (Annual)

	1974	1973
Part I Crime:		
Murder and Manslaughter.....	0	1
Rape.....	5	12
Attempt Rape.....	0	1
Robbery.....	11	5
Assault.....	18	20
Burglary.....	224	187
Larceny.....	376	311
Theft, Motor vehicle.....	62	26
* Narcotics.....	21	16
<b>totals</b>	<b>717</b>	<b>579</b>
* Part II Crime: (property crimes).....	<b>422</b>	<b>340</b>
Part III Crime: (moral, vice, social)./. .....	<b>1100</b>	<b>1223</b>
other.....	57	9
<b>GRAND TOTAL.....</b>	<b>2296</b>	<b>2151</b>
Part I crime arrests:	Juv / Adult	Juv / Adult
Murder and Manslaughter .....	0 0	0 1
Rape.....	0 0	0 5
Attempt Rape.....	0 0	0 0
Robbery.....	0 0	0 0
Assault.....	0 6	0 5
Burglary.....	2 7	2 7
Larceny.....	6 1	2 1
Theft, Motor vehicle.....	0 0	1 3
Narcotics.....	0 14	4 7
other arrests.....	22 165	4 131
<b>TOTAL</b>	<b>30 193</b>	<b>13 160</b>
	1974:	
	<u>amount stolen</u>	<u>amount recovered</u>
Robbery.....	\$ 135.00	\$ 0.00
Burglary.....	19,214.00	735.00
Larceny.....	40,764.00	5,012.00
Auto theft.....	23,721.00	8,333.00
	<u>10,445.00</u>	<u>0.00</u>
<b>GRAND TOTAL</b>	<b>\$94,279.00</b>	<b>\$14,080.00</b>

TOWNSHIP OF Orion

Activity report for period ending December 31, 1974 (Annual)

Traffic information:

Accidents:

P.I.....	130	
H/R P.I.....	1	
P.D.....	350	
H/R P.D.....	31	
Private property.....	16	
Fatals.....	3	
	<hr/>	<hr/>

total..... 531

Misc. traffic complaints.... 5

Citations issued..... 636

Sno-mobile Accidents:

P.I.....		
P.D.....		
Fatals.....		
	<hr/>	<hr/>

total

Citations issued.....

From:  
 Oakland County Sheriff Department  
 To:  
 TOWNSHIP OF Springfield

Activity report for period ending December 31, 1974 (Annual)

	1974	1973
<b>Part I Crime:</b>		
Murder and Manslaughter.....	1	0
Rape.....	1	0
Attempt Rape.....	0	0
Robbery.....	3	0
Assault.....	8	1
Burglary.....	104	28
Larceny.....	110	53
Theft, Motor vehicle.....	16	4
* Narcotics.....	8	4
<b>totals</b>	<u>251</u>	<u>90</u>
<b>Part II Crime:</b> (property crimes).....	<u>109</u>	<u>69</u>
<b>Part III Crime:</b> (moral, vice, social)./. .....	<u>340</u>	<u>300</u>
other.....	8	5
<b>GRAND TOTAL.....</b>	<u>708</u>	<u>464</u>
<b>Part I crime arrests:</b>	<b>Juv / Adult</b>	<b>Juv / Adult</b>
Murder and Manslaughter .....	0 0	0 0
Rape.....	0 0	0 0
Attempt Rape.....	0 0	0 0
Robbery.....	2 1	0 0
Assault.....	0 3	0 0
Burglary.....	0 2	0 2
Larceny.....	0 2	0 0
Theft, Motor vehicle.....	0 0	0 0
Narcotics.....	2 7	0 3
other arrests.....	4 46	5 26
<b>TOTAL</b>	<b>8 61</b>	<b>5 31</b>
	<u>1974:</u>	
	<u>amount stolen</u>	<u>amount recovere</u>
Robbery.....	\$ 4,800.00	\$ 0.00
Burglary.....	7,491.00	180.00
Larceny.....	9,509.00	168.00
Auto theft.....	8,800.00	800.00
	539.00	0.00
<b>GRAND TOTAL</b>	<b>\$26,339.00</b>	<b>\$5,948.00</b>



TOWNSHIP OF Springfield

Activity report for period ending December 31, 1974 (Annual)

Traffic information:

Accidents:

P.I.....	52	
H/R P.I.....	1	
P.D.....	89	
H/R P.D.....	2	
Private property.....	7	
Fatals.....	1	
	<hr/>	<hr/>

total..... 152

Misc. traffic complaints.... 0

Citations issued..... 247

Sno-mobile Accidents:

P.I.....		
P.D.....		
Fatals.....		
	<hr/>	<hr/>

total

Citations issued.....