



### Waterford

Mrs. Jack Hall, Correspondent  
Phone OR 3-0261

Stephen P. Sutton, who has been a recent guest at the home of his brother, James Sutton, has returned to Glendale, California.

Carl Zander is in Pontiac General Hospital convalescing from a recent operation.

Ed. Amos received his discharge

from the Navy last week and is now back home. He is the son of Robert Amos of VanSycle St.

The 24th annual Mehlerberg reunion was held Saturday at the F. A. McCullum home near Fen-ton with 40 members of the family present. Lester Mehlerberg of Pontiac was elected president; F. A. McCullum, vice-president and program chairman, and Mrs. Clare Ousnamer of Oxford, secretary-treasurer. The reunion, next year,

will be held at the home of Mr. and Mrs. David Mehlerberg on the 3rd Saturday in July.

The engagement of Janet Onalee Johnson to Dean Grafmiller is being announced by her parents, Mr. and Mrs. Edwin D. Johnson of Fremont Street. Dean is the son of Mr. and Mrs. Dale Grafmiller of Windgate Park. No date has been set for the wedding.

Two weeks of Daily Vacation Bible School at the Waterford Community Church ended Saturday with an average daily attendance of 199. The highest attendance for any one day was 220. Awards were presented to those bringing in the most new pupils with the first place going to Shirley Bronrdige with 23 new recruits. Other awards went to James Bronrdige, LeRoy Bronrdige, Linda Vore, Michael Mischan, and Margaret VanHorn.

Mr. and Mrs. Robert Bilss spent several days last week with friends on Lake Huron, near Deckerville.

Mrs. James Lambertson and daughters, Karlene and Kathy Sue, and her parents, Mr. and Mrs. Albert Mertens, went to Atlanta on Monday and will spend a week at the Lambertson cabin.

Mr. and Mrs. Clyde Kizer and children returned home on Saturday from a three weeks vacation spent in the north.

Little Rickey Beede, son of the Don Beedes, was taken to St. Joseph's Hospital on Saturday suffering from bronchial pneumonia.

The Emerson Mitchell family has returned to their home in Pennsylvania after coming to Waterford to attend the Mitchell family reunion held recently.

Glen Byington is convalescing in Pontiac General Hospital following a gall bladder operation last week.

The Stanley Hawkins family of Anaheim, California, former Waterford residents, called on friends here last week. They were enroute home from a trip to New York State where they had been visiting relatives.

Fred Allyn of the Waterford Hardware is ill at his home with virus pneumonia.

Mrs. Frank Correll is a patient in Pontiac General Hospital where she underwent an operation on her spine on Tuesday.

Mr. and Mrs. Harold Jacobs (Elaine Dorman) are announcing the birth of a 7 pound 9 ounce son, Harold John, on July 17th, at St. Joseph's Mercy Hospital.

Victor Lindquist has returned to his home in Iowa following a visit with his son and family, the Victor Lindquists on Andersonville Road.

Nancy Lou Giddings had the misfortune to fall recently while playing and broke her ankle.

Bernard Wilder, son of Mrs. Martha Wilder of Adamson Drive, has been home on a ten-day leave from the Navy prior to leaving for the west coast. He received his basic training at Great Lakes and for the past 8 months

### Clarkston News

Published every Thursday at 6188 S. Main Street, Clarkston, Michigan.  
William H. Stamp, Publisher  
Subscription price \$2.00 per year, in advance.  
Entered as second-class matter, September 4, 1931, at the Post Office at Clarkston, Michigan, under the Act of March 3, 1879.  
Phone MA 5-4321

### Fiery Wildlife Youngster



While only a few weeks old, this downy red-tailed hawk already exhibits the mean disposition of his parents. But, though he appears unlikable, conservation department game men say that like most hawk species, the redtail is largely beneficial to man. It's food is mostly small rodents—field mice, barn rats and other nuisance animals. He may make off with an occasional rabbit or squirrel, but such wildlife species do not generally provide fare for this big chestnut-colored bird.

has been in a Navy School in Tennessee. He left early this week for California where he will be for the next two years.

Another Navy boy, Bill Hawke, son of Mr. and Mrs. Lawrence Hawke, is now on an 8 months Mediterranean cruise aboard the Aircraft carrier F. D. Roosevelt. Bill is a buddy of Bernard Wilder and both of the boys enlisted in the Navy at the same time, about a year ago.

The Waterford Community Church Sunday School, Daily Vacation Bible School and the Beacon Club picnic will be Saturday, July 25th at the Davisburg Park. Cars will leave the church at 3 o'clock and the supper will be at 5:30, followed by devotionals in charge of the Beacon Club at 6:30. Each family is asked to bring their own table service and a passing dish.

The meeting of the Good Will Club has been postponed for one week and will be on July 31st and will be at the summer home of Mr. and Mrs. Percy Hunt at Watkins Lake. This will be a picnic supper.

Reverend and Mrs. Wright Van-Plew and sons are leaving this Thursday for a vacation in and around Virginia.

Nancy Lambertson, 15 year old daughter of Mr. and Mrs. Richard Lambertson, was crowned "Miss Waterford" at the close of the C. A. I. Fair on Sunday evening. She drew a total of 33,713 votes for the honor. She won an expenses-paid vacation for two and she will reign over a trip to Bob-Lo on Waterford Township Day. Nancy will compete for the title of "Miss State Fair". The queen's court is composed of Wilma Ice, Carol Schmidt and Nancy Tibbetts. Jeannine McCaffrey, last year's queen, pinned corsages on the girls and crowned the new queen.

Vegetable growers in Michigan may get less for their produce this year than in 1952. The demand is good but supplies promise to be high along with a big supply of frozen stocks, say Michigan State College agricultural economists.

Any cans of unopened food with bulging ends, known as "swells", should be discarded, stresses Mrs. Amen.

The homemaker may be confused by gradings of canned foods.

Price differences are caused by differences in appearance, color, flavor, etc.

It may be more economical to purchase lower grades of canned foods for dishes where the original appearance of the food is unimportant—as in soups, creamed dishes, scalloped dishes and salads.

Higher grades are desirable when the food is to be served as it comes from the can—as in the case of stewed tomatoes or fruits for dessert.

### SEEDINGS IN CORN FIELDS ARE VALUABLE

If you want to use that soil between your corn rows, seed rye or sweet clover, suggests a farm crops specialist at MSC.

Herbert R. Pettigrove says the seedings will help cut down on winter soil erosion and can be plowed under for green manure or used for hay or pasture.

Seedings between corn rows can be made in several different ways. Some farmers use a seeder on the front of a weeder. One farmer, recalls Pettigrove, attached a seeder to the front of his tractor so he could seed and cultivate in one operation. Other farmers have adjusted grain drills

or different types of hand seeders for the operation.

You get the best stand of a seeding, reminds Pettigrove, if the seed is covered only slightly. This is where a weeder or cultivator comes in handy. But if you use a cultivator, make sure that it runs very shallow.

Recommended rates of seeding include a bushel to a bushel and a quarter of rye per acre, eight pounds of alfalfa, 12 to 15 pounds of sweet clover, or a mixture of 10 pounds of sweet clover and three to four pounds of domestic rye grass.

Before seeding, however, he cautions, make sure the seed will germinate by running a germination test.

# Independence

## Be Wise

## Plan Ahead

## Save

## We welcome your account

### Clarkston State Bank

Clarkston, Michigan

Member Federal Reserve System

Member Federal Deposit Insurance Corporation

### Men's

## Orlon and Nylon

## Short Sleeve

## Sport Shirts

## \$3.95 and up

### GREEN'S Men's Wear

(Next To Pontiac State Bank)

PHONE OR 3-1807

DRAYTON PLAINS, MICH.

PLENTY OF FREE PARKING IN THE BACK

## GARAGES

### FHA TERMS NO MONEY DOWN!



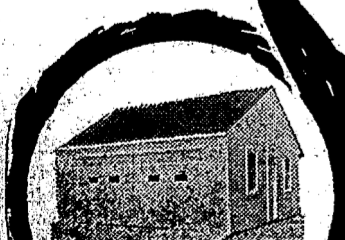
2-CAR FRAME



1 1/2-CAR and PORCH



### Federal 2-1211 Free Estimates



2-CAR FRAME



2-CAR FRAME

- Attic Rooms
- Porches
- Additions
- Recreation Rooms
- Roofing and Siding
- Waterproofing
- Sand Blasting

Our Representatives will Call at Your Convenience No Obligation

We build any size or style, frame or masonry. All jobs expertly constructed with quality materials. Complete contract work.

# G & W Construction Co.

2030 Dixie Hwy. at Kennett Rd., Pontiac, Mich.

OPEN SUNDAY 12 to 4 P. M.

Call Us For ASPHALT PAVING Driveways, Parking Areas

### "GET MOST COMPLETE PROTECTION FOR YOUR AUTO INSURANCE DOLLARS"

SAYS ROBERT C. BEATTIE

No other policy gives you more complete protection than our famous Blue Ribbon Auto Insurance.

You also get:

- 1 Cash dividend savings
- 2 Protection everywhere you drive
- 3 Fair, prompt claim payments

CALL OR WRITE

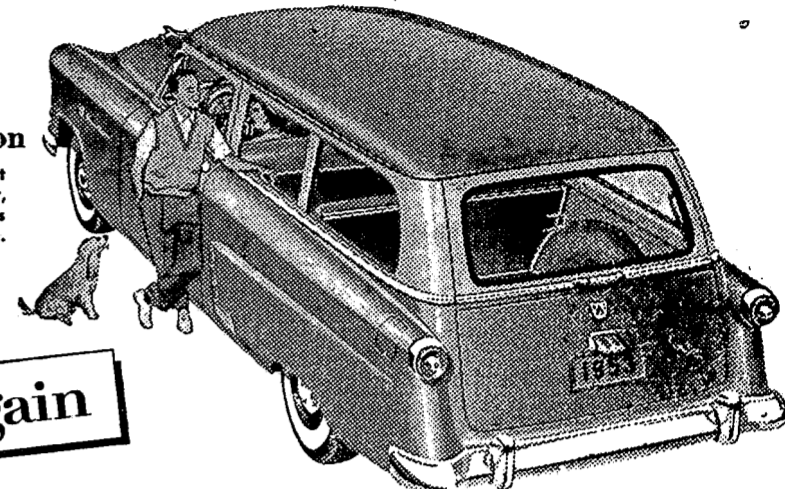
Robert C. Beattie

Phone ORlando, 3-1925

Waterford, Michigan

### Ford Ranch Wagon

It's a 6-passenger sedan that "doubles" as a hefty hauler, too. Available with either Ford's High-compression Six or V-8.



## Look again

# There are 6 cars on this page!

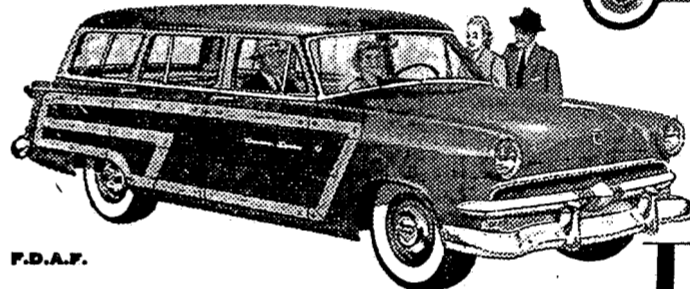
## Each of Ford's 3 great station wagons is actually 2 cars in 1!

No matter which Ford station wagon you choose, you get a roomy passenger car that converts to a cargo carrier in a jiffy! Take Ford's 2-door Ranch Wagon, for instance. There's room aplenty for six big people inside its built-in Crestmark body. Or, by merely folding the "stowaway" seat

into the floor, you have over 6 1/2 feet of level load area. Ford offers two 8-passenger "quick change artists", too. And no matter which of the three you choose, you get a choice of Fordomatic, Overdrive or Conventional and a host of other famous Ford "Worth More" features.

### Ford Country Sedan

This all-metal counterpart of the Country Squire is equally at home on the farm or "on the town". It's 8-passenger big, has nearly 8 1/2 feet of load space.



### Ford Country Squire

This double-duty beauty has room for eight or a half-ton of freight. Handsomely trimmed with Genuine Maple or Birch.

America's largest selling station wagons...

# Ford

SEE THEM... VALUE CHECK THEM... TEST DRIVE THEM!

## BEATTIE MOTOR SALES

FORD SALES AND SERVICE

"At The Stoplight"

Waterford

Phone OR 3-1925

# Custom Printing at its Best

## We do the entire job from linotype to bindery in our own shop.

### The Clarkston News MAple 5-4321

**HAY TO BE MOVED TO DROUGHT-STRICKEN AREA**

Michigan farmers are being called upon to come to the aid of their drought-suffering Southwest neighbors needing hay or pasture. Work is starting immediately in every Michigan county to find how much surplus hay there is

that could be shipped, under government orders, to the Southwest, where cattle are thinning and falling for lack of grazing moisture.

"We need action right now", stresses D. B. "Woody" Varner, director of the Cooperative Extension Service at MSC. "Action in

a couple of weeks will be too late. The cattle will be too far gone to help", says the former Texan, well-acquainted with the inroads of drought.

Aid of the M. S. C. extension staff, including the county agricultural agents, has been asked by the federal extension director, C.

M. Ferguson, an ex-officio member of the emergency U. S. Department of Agriculture Committee. Director Varner immediately commissioned E. A. Wenner, district extension supervisor for north Michigan, to head the special project.

"Farmers should contact their county agricultural agents—not wait for him to contact them—if they have surplus hay or pasture", notes Wenner. "The agents will want to know how many tons of hay, what kind and quality it is, and the price. We're primarily interested in hay that is baled and ready to move out now—but also will want figures on hay that will be ready later."

Farmers with excess pasture also should contact agents with the number of acres, kind of pasture and its livestock-carrying capacity. Cattle can be shipped north for grazing on this excess pasture under two plans: 1. Outright rental; 2. Sharing in the calf sale proceeds on a cow and calf grazing arrangement. Hay sale and pasture contracts will be made between Michigan farmers and individuals in the Southwest who need the aid.

**FARM MANAGEMENT & MARKETING NOTES**

by Ray E. Poyner  
Assistant County Agr'l Agent

Many Oakland County farmers are being hurt by falling farm prices. Farmers are finding that while prices of things they have to sell are going down, prices of things they buy aren't giving much. As a result, profits suffer all around, but some farmers are hurt worse than others. Three farms which have shown a profit in good times and bad will be visited on the fifth annual State Farm Management Tour. The state-wide tour will be held in Saginaw County on August 6. Farms to be visited will be typical family farms, and ideas presented will be as applicable here in Oakland County as in Saginaw County.

Loren Black, Saginaw County Agricultural Agent, is general chairman of the tour. In announcing the tour, Black said, "I feel that the tour will be a real opportunity for farm folks because we all know that efficient management of the farm business is becoming increasingly important every day."

Since drainage will make more efficient production possible on many Michigan farms, the tour will start with a tilling demonstration at the John and Fred Sahr farms, 7 miles east of Saginaw on M-81. The Sahrs are beating the cost-price squeeze by keeping machinery costs low through joint ownership. They get high yields of beets, beans, wheat and corn through the liberal use of fertilizer and green

**Creel Census**



Faithfully reporting his catch, this angler is adding to the conservation department's knowledge of fishing in Michigan. The department is studying a number of experimental areas to learn more about fish populations and stream and lake conditions in the state.

manure.

Henry Hetzner and sons, second stop on the tour, have managed to keep in the black by making rapid changes in their farm business to take advantage of new developments. They operate a 176-acre dairy farm which supports three families. Examples of recent changes on their farm are the bulk handling of milk, pen-type barn and milking parlor, mow-drying of hay, and bulk handling of fertilizer.

The brief noon program will carry out the tour theme with a discussion of "Maintaining Farm Profits In This Cost-Price Squeeze". The speaker will be Arthur Mauch, MSC farm economist, who is nationally known for his work in agricultural policy.

Warner Law, last stop on the tour, is easing the pressure on profits by shifting his farming set-up so as to use less hired labor. He has a 390-acre farm on which beef cattle and cash crops

are the main enterprises.

Seeding and spraying crops by airplane, a new and practical method, will be demonstrated as the final attraction at the Law farm.

The tour is sponsored by Saginaw County farmers, cooperating firms and agencies and by the Agricultural Economics Department, MSC. Both farm and city folks all over the state are expected to attend. Why don't you plan to go and take the neighbors along.

**WIVES, READ HOW TO HELP YOUR HUSBAND GET AHEAD**

Mrs. Dale Carnegie, wife of the man who taught millions how to win friends, now tells just how a wife can help her husband succeed. Wives, see The American Weekly, with this Sunday's (July 26) Detroit Sunday Times, to start reading "How to Help Your Husband Get Ahead", by Mrs. Dale Carnegie.

**ATTENTION MR. FARMER**

We invite all our neighbors to try our products; we'll let our products speak for themselves.



**HIGH-TEST BLUE SUNOCO**

Now Available by Tankwagon to Commercial Users and Farmers



- Blue Sunoco Gasoline
- Sunoco Motor Oils
- Sunoco Lubricants
- Sunheat Fuel Oil
- Batteries — Accessories

A Complete Line of Truck and Tractor Tires For Your Farm and Truck Requirements Call **MA 5-7421**

**CLARKSTON COAL & OIL CO.**

4800 White Lake Road

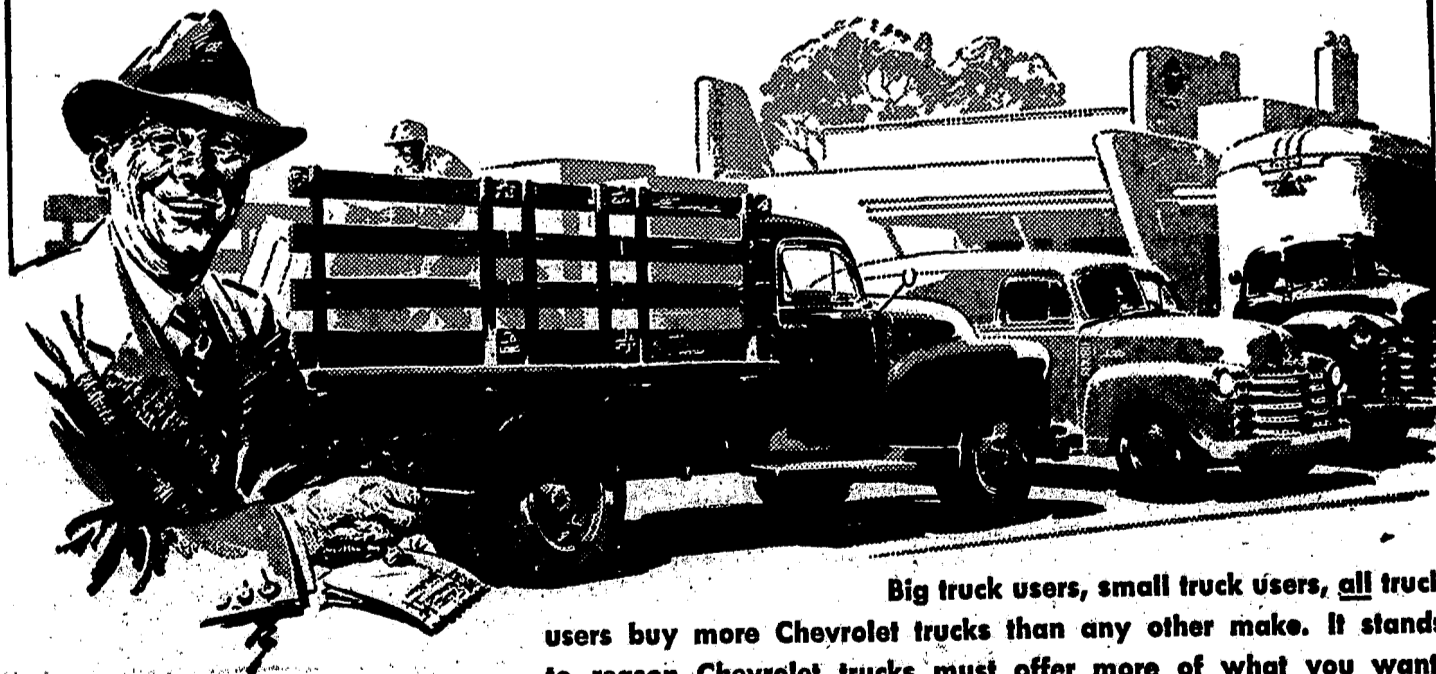
Clarkston, Michigan

MAple 5-7421

Sunoco Farm and Commercial Distributor

*It stands to reason...*

**Chevrolet trucks must be the best buy!**



Big truck users, small truck users, all truck users buy more Chevrolet trucks than any other make. It stands to reason Chevrolet trucks must offer more of what you want.

When you stop to think about it, the best proof of outstanding value in any product is continued public preference. That's the way it is with Chevrolet trucks. They're the top selling trucks in America today... for the twelfth straight production year.

This is a mighty important fact to consider before you buy your next truck. You'll also want to consider that, while Chevrolet trucks give you more features you want, it's the lowest-priced truck line of all! Come in and talk it over with us.

**MORE CHEVROLET TRUCKS IN USE THAN ANY OTHER MAKE!**

**DON PRINGLE CHEVROLET, INC.**

**Chevrolet and Oldsmobile**

**CLARKSTON**

PHONE MAple 5-5071

**The SAFETY-TESTED SEAL means—**

**A BETTER DEAL**

in a low-mileage top-quality **USED CAR!**



Introducing Oldsmobile's new seal... symbol of a top-quality deal in used cars

The hottest value on the used car market is a "Rocket" Engine Oldsmobile! And now... because the new 1953 "Rocket" Oldsmobile is so tremendously popular... we've got a BIG selection waiting for you. Every car that wears the famous Oldsmobile Safety-Tested Seal is an exceptional buy... checked five ways for safety and dependability: Engine, tires, brakes, steering, ignition... all are gone over carefully, thoroughly! Yes, you'll find lots of "Rockets" here... but we're also featuring other top makes and models on our Safety-Tested Used Car Lot. Every one is backed by our reputation for fair dealing! Come in... and drive a bargain... drive away in a Safety-Tested Used Car.



**YOUR OLDSMOBILE DEALER**

SEE YOUR NEAREST OLDSMOBILE DEALER

**DON PRINGLE CHEVROLET, INC.**

Phone MAple 5-5071 **Chevrolet and Oldsmobile** CLARKSTON

COME IN FOR A DEMONSTRATION—MAKE A "DOUBLE-DATE" WITH A "ROCKET 8"

**Heather...by**

Hand-blown crystal, skillfully Master-Etched by Fostoria's craftsmen will give you pleasure for years to come. The delicate Heather design is correct on every table... for any gift. With scores of useful pieces to choose from, you'll find a gift of Heather for everyone... and without budget problems. Come in and see our entire open-stock Fostoria collection... today:

Stemware — each \$1.95

Cups and Saucers — \$2.95

Salad Plates — each \$1.95

Other Pieces Available



**THE DIXIE POTTERY**

5281 Dixie Highway. (Near Waterford) OR 3-1894 For Your Convenience Open Daily and Sunday Open From 10 A. M. to 9 P. M.



Church News

OUR LADY OF THE LAKES
Rev. F. J. DeTaney, Pastor
Sunday masses at 7:00, 8:30, 10:30 A. M. and 12:00 noon.
Confessions at the church on Saturday from 4 to 5 and 7:30 to 9 P. M.
Holy hour every Thursday at 7:30 P. M., followed by confessions.

Family Bible and Prayer Hour, 7:30 P. M.
Choir Rehearsal, 8:45 P. M.
Friday, 7:30 P. M. S. O. S. Club for junior and senior high school young people
FIRST CHURCH OF CHRIST, SCIENTIST
Sunday School 11:00 A. M.
Sunday Service 11:00 A. M.
Wednesday Evening Service 8:00
Reading Room at rear of Church, open Wednesday from 2 to 4 and 7 to 8 P. M.

ence and Health with Key to the Scriptures" by Mary Baker Eddy include: "Christian Science brings to light Truth and its supremacy, universal harmony, the entireness of God, good, and the nothingness of evil."
ST. ANDREWS EPISCOPAL
Rev. Waldo R. Hunt
Minister-In-Charge
Morning Worship, 10:30 A.M.
Holy Communion on the first Sunday of each month.
Church School, 10:30 A. M.
FIRST BAPTIST CHURCH
3714 Sashabaw Road
Drayton Plains
Rev. James E. Taulbee, Pastor
Sunday School, 10:00 A. M.
Divine Worship, 11:00 A. M.
Youth Service, 5:30 P. M.
Gospel Service, 7:30 P. M.

NEWS LINERS
Far Sale Wurlitzer, baby grand, walnut case, modern lines, \$500. Phone MAple 5-3266. 47c
Beautiful Chrome Dinette and Breakfast Sets Made To Order
Any Size, Shape or Color
Genuine Formica Tops
Triple Process Chrome
Heavy Gauge Duran or Comark Nylon Plastic Upholstery
Select From 26 Different Styles
Visit our Factory Display and Save
Odd Chrome Chairs, \$6.95 each
METAL MASTERS MFG. CO.
4436 N. Woodward near 14 mile Rd
Royal Oak — LI 1-0050
24802 Grafton near 10 mile Rd
East Detroit — PR 5-5200
24332 Michigan near Telegraph
Dearborn — LO 1-2121
HOURS
Daily - 10:00 A. M. to 8:30 P. M.
Sunday - 12:00 p. m. to 6:00 p. m.

Female help, wanted, evenings; kitchen help for weekends, Rocci's Restaurant, 5171 Dixie Hwy. 47c
Wanted—a home for "Shadow", a male cocker, gentle disposition. We love him but we cannot take him with us when we move. Phone MAple 5-7711 47c
For Sale—red raspberries, to pick, 25cts per quart. Phone OA 8-2035. 46c4
For Sale—Dry fire place or furnace wood, hickory and oak, any length. Ben Powell, phone MA 5-6621. 25tkc
Trees, trimmed, cut down and hauled away. Chain saw for rent. Ben Powell. Phone Clarkston MA 5-6621. tkc
Accurate saw filing by machine. Bill Kelley, 5050 White Lake Road, phone MA 5-3042.
Furniture bought and sold—one piece or a house full—for cash. Attend our weekly Auction, every Friday evening, B. & B. Auction Sales, 5089 Dixie Highway, Phone ORlando 3-2717, Waterford. 30tkc
Sleeping rooms, by the week, at the Caribou Inn, Clarkston. 34tkc

For Sale—Hay and Straw; also tractor work. Phone MA 5-3502. 38tkc
Gravel for driveways, top soil and fill dirt; trucking and tractor work of all kinds. Ben M. Powell, MA 5-6621. 25tkc
Road gravel, washed sand and gravel, black dirt, bulldozing and landscaping. Phone MA 5-4899. 32tkc
Bull-dozing, sand, gravel, fill dirt. Head Bros. ORlando 3-2544. 28tkc
Costume Jewelry, Imported China, Reproduction of Early American Glass and Lamps. Many outstanding gift items. Cards and Gift Wrapping. HANDCRAFT HOUSE, 5775 Dixie Hwy., in Waterford. 43tkc
MONUMENTS & MARKERS
At price you can afford to pay. MILFORD GRANITE WORKS MILFORD, MICH. 27tkc

Home Grown Vegetables
Tomatoes - Corn
FRESH DAILY
Ice Cold Watermelon
Picnic Supplies
Raspberries for Canning
RITTER'S Farm Market
U. S. 10 Just South of Bowling Alley MA 5-6331

Buy the Best for Less AT KROGER
Leg 0' Lamb 69c lb.
Fresh Fryers WHOLE . . . . lb. 55c
Butter . . . Country Club Roll 90 Score . . . . lb. 67c
Tuna BREAST O' CHICKEN CHUNK PACK . . . 3 6-oz. cans 1.00
Pet Milk For Better Baking . . 2 tall cans 25c
Tomato Juice Kroger 3 46-oz. cans 69c
WATERMELONS
Red-ripe Sugar-Sweet Whole 28-30-lb. Avg. 1.39
Place Your Order Now for Canning Apricots With Your Kroger Store Manager!
Kroger Puddings & Gelatins Pkg. 5c
Store Hours:
Kroger LIVE BETTER FOR LESS
Copyright 1949 The Kroger Co.
We reserve the right to limit quantities. Prices effective through Saturday, July 25, 1953.

FLEETWOOD Chain Saws Only \$239.50
Write or Phone O. F. FERNSEMER 915 Hemingway Road Lake Orion MYrtle 3-5808

SAVES YOU TIME AND WORK
EASY TO USE
EASY TO WRING
SPONGE MOP \$ 3.13
Phone FE deral 2-2318
Charlie Warner
Mention this adv. for bonus gift.

FOR WIVES ONLY!
Wives! Learn how you can make your dreams come true — by helping your husband become more successful! You can't afford to miss this new series of articles—"How to Help Your Husband Get Ahead" by Mrs. Dale Carnegie—starting Sunday in The American Weekly, the magazine distributed with SUNDAY'S CHICAGO-AMERICAN.

Dear Editor:
I . . . the letters start. Then from all over the free world come such comments as these from readers of THE CHRISTIAN SCIENCE MONITOR, an international daily newspaper:
"The Monitor is most reading for straight-thinking people. . . ."
"I returned to school after a lapse of 18 years. I will get my degree from the college, but my education comes from the Monitor. . . ."
"The Monitor gives me ideas for my work. . . ."
"I truly enjoy its company. . . ."
You, too, will find the Monitor informative, with complete world news. You will discover a constructive viewpoint in every news story.
Use the coupon below for a special introductory subscription — 3 months for only \$3.
The Christian Science Monitor One, Newbury St., Boston 15, Mass., U. S. A.
Please send me an introductory subscription to The Christian Science Monitor — 15 issues. I enclose \$3.
(name)
(address)
(city) (state) (zip) PG-11

HOW TO PROVE WHICH IS THE FINEST CAR AMERICA HAS YET PRODUCED...
It will give you the
1. most real power . . . which you won't find in any other kind of American car. Provides far more "thrust" to the rear wheels from every drop of fuel. It's a totally new-type engine . . . powering the Imperial and conferring absolute highway mastery. Try it!
It will give you the
2. most real control . . . the most fully powered steering and braking you can have today in any car. A totally new safety and ease that makes Imperial the best-behaving car you ever handled. Try it!
It will give you the
3. most real luxury . . . and of a new kind. Here again you must look to Imperial for qualities that appear in no other car: a rightness in styling and a richness in handcrafting that blend perfectly with this car's supremacy in motion. Try it!
Imperial BY CHRYSLER
NOW AVAILABLE—THE NEW CHRYSLER AIRTEMP AIR-CONDITIONING SYSTEM
CLARKSTON MOTOR SALES
32 S. Main Street Clarkston

## The Village Market

Wm. Dunston, Prop.

4 S. Main Street

MAple 5-2711

### Wheaties

2 pkgs.  
25c

### Northern Tissue

4 rolls  
29cYoung  
Beef Liver

lb. 39c

### Pet Milk

3 tall cans  
35c

No. 2½ can, Keifer

Sliced Pears  
can 23cVeal  
Shoulder Roast

lb. 43c

### LOCKJAW PRECAUTIONS

(continued from page 4)

and either the toxoid or anti-toxin may be administered by any physician.

Supplies of these products were rushed to the tornado district near Flint because of the tetanus hazards resulting from the numerous lacerations and puncture injuries. This proved to be a wise precaution because tetanus germs were recovered from a number of wounds, but no cases of lockjaw have been reported.

Immunization against tetanus is a "must" for children particularly during the summer when their bare feet and hands receive many scratches, cuts and blisters which go unnoticed.

### SAFETY WEEK PAYS

Safety is a year-around proposition, points out David G. Steinicke, safety specialist at Michigan State College, as farmers over the nation join this week in observing National Farm Safety Week.

Safety was being stressed this week in churches, in homes, on the highways, in the fields, with animals, with machinery, in everyday living.

The best part of Farm Safety Week, reminds Steinicke, is that it gives us all a little nudge to take inventory and make our surroundings safer. Safety pays before an accident—the farmer pays afterwards, if he's around.

A corn roast is a neat picnic trick. Take along corn frozen on the cob—no waiting for roasting ear season. Wrap each ear in aluminum foil and place on the coals. Allow ten minutes for each side of the ear, advise Michigan State College home economists.

## MENU NEWSREEL



Stars light in everyone's eyes at the sight of this luscious ice cream blueberry pie with its toasted coconut crust!



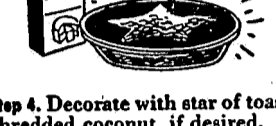
Step 1. Evenly spread 2 tablespoons of soft butter on bottom and sides of 9-inch pie pan. Sprinkle one package (1½ cups) of shredded coconut in pan. Press very evenly into the butter. Bake in slow oven (300 F) 15 to 20 minutes till golden brown. Cool.



Step 2. Spoon evenly 1 quart of vanilla ice cream into coconut crust. Generously pour cooked cultivated blueberry mixture on top of ice cream.



Step 3. Bring to a boil in a sauce pan ½ cup of water and 2 cups of fresh cultivated blueberries, then add a mixture of ½ cup of sugar and 1 tablespoon of cornstarch, spiced with a dash of cinnamon and salt. Steadily cook and stir till thick and clear. Remove from heat and add 1 tablespoon of fresh lemon juice. Cool.



Step 4. Decorate with star of toasted shredded coconut, if desired.

Coconut Starred Blueberry Pie—studied with cool, and shining new taste pleasures—fancifully fetches all the delights of the summer evening sky to your dinner table!!

Emily Adams

Here's an interesting way to cook beef liver: Dip slices of young beef liver in flour which has been seasoned with dry mustard and chili powder. Fry in shortening or bacon drippings until browned, four to five minutes per side.

### News Liners

AUTOMOTIVE SALES REPRESENTATIVES — to contact prospects in Clarkston area. Highly desirable, medium and high price class lines. For information write Box B, The Clarkston News. 41c8

NEWS LINERS bring results.

## Now Open

Back From Vacation . .

We are ready to do that expert cleaning job for you.

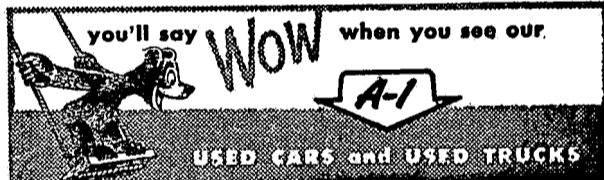
GIVE US A CALL

### BERG CLEANERS

6700 Dixie Hwy. Ph. MAple 5-3521

## This Hot Weather Enjoy Eating at the Clarkston Cafe

Bring The Family — They Will All Enjoy It  
Real Home Cooked Food Served In A Modern Dining Room  
Same Low Prices  
Phone MA 5-9191 Jessie & Bob Parker



Beattie Motor Sales  
"AT THE STOPLIGHT"

Phone OR 3-1925

Waterford

OUR REPUTATION RIDES WITH EVERY USED CAR AND TRUCK WE SELL!

Clarkston News Want Ads Are Money-Makers and Time-Savers. Ph. MA 5-4321



Beef Pot Roast choice grade lb. 53c  
Tomatoes outdoor grown lb. 25c  
Welch's Grape Juice frozen 2 cans 45c  
Butter Remus lb. 67c  
Breast of Chicken Tuna chunk pack can 29c

GOLDEN RIPE Bananas 2 lbs. 29c  
BIRDSEYE, FROZEN Orange Juice 2 cans 41c  
Pascal Celery bun. 23c  
FROZEN Peas & Carrots 2 pkg. 39c  
Salad Dressing qt. jar 37c

## Terry's Market

"Your Complete Food Market"

MAple 5-4341 Clarkston

## Powell's Market

6687 Dixie Hwy at M-15 Phone MA 5-6251  
Open Sundays — Closed Mondays

### FRESH DRESSED

Stewing Hens, pan ready  
Fryers-Roasters, pan ready  
Old Fashion Smoked Hams and Bacon

## Fresh Fish Daily

Pure Seal Ice Cream Pt. 29c  
½ Gal. 89c

### Large, Farm Fresh Eggs

PINCONNING CHEESE

## Remember

### YOUR HOME NEWSPAPER

All matters handled through the Probate Court require a certain amount of legal publication in one of the county papers. Foreclosing a mortgage entails publication of the foreclosure notice in a county paper.

Either the probate court officers or your attorney will have your legal publication carried in The Clarkston News if you request it.

We solicit the privilege of carrying such legal publications. This form of advertising is valuable to us. When you support us in this way we are able to give you a better paper each week.

The Clarkston News

NEW SNACK TABLES—ideal for buffet suppers, garden or television parties—single tables \$1.95 to \$3.75; sets of 4, with rack, \$9.75 to \$17.50. Boothby's Old Farm Shop, 7081 Dixie Hwy, phone MA ple 5-5631. 47c

FOR SALE—air compressor and Arcola heating unit; miscellaneous service station equipment. 4545 Waterford Rd., phone OR 3-8374. 47c

\$400 MONTHLY SPARE TIME Refilling and collecting money from our five cent High Grade Nut machines in this area. No selling! To qualify for work you must have car, references, \$640 cash, secured by inventory. Devoting 6 hours a week to business, your end on percentage collections will net up to \$400 monthly with very good possibilities of taking over full time. Income increasing accordingly. For interview, include phone in application. Write Box B, Clarkston News, Clarkston.

The new VOGUE DOLLS and BASKETS have arrived at Boothby's Old Farm Shop, 7081 Dixie Hwy, phone MA ple 5-5631. 47c

RESPONSIBLE PERSON male or female, from this area, wanted to service and collect from automatic vending machines. No selling. Age not essential. Car, references, and \$800 working capital necessary. 7 to 12 hours weekly nets to \$400 monthly. Possibility full time work. For local interview give full particulars, phone. Write P. O. Box 521, Mpls, 1, Minn.

OUTSIDE PAINTING, low hourly rate, careful workmanship. C. W. Boutell, 148 Church St. Ortonville, phone 88. 47c3

## ROY'S Cities Service STATION

Dixie S. of M-15

### Lemon Custard French Vanilla "Home Maid" Ice Cream

TO TAKE HOME PACKAGE  
PINT 29c  
½ GAL. 95c

HAND PACKED  
PINT 39c  
QUART 75c

## DIXIE SPOT

Dixie Hwy. at M-15

\$350 MONTHLY SPARE TIME National company seeks reliable party to own and operate route of vending machines. This is not nuts. No selling required. \$350.00 per month possible part time, full time more. Car and \$800 cash required (which is secured by inventory). This will stand strict investigation. For interview in your town with factory representative, include phone and address in application. Empire Mfg. Agency, 946 Goodfellow, St. Louis, 12, Mo.

NEWS LINERS bring fast results

FOR sale—Westinghouse electric stove, fully automatic, like new; several chests; 500 gal. stock watering tank; cider barrels; old fashioned vinegar; many other articles, priced to sell. Wompole's, Clarkston, phone MA ple 5-2741. 47c

RYTEX STATIONERY SPECIAL for July and August. Buy now for all the family—printed with your name and address, save \$1.25 on each box. Boothby's Old Farm Shop, 7081 Dixie Hwy, phone MA ple 5-5631. 47c

## Peas! Peas! Peas! SPECIAL

Early Crop

Thomas Laxton

Frozen Peas

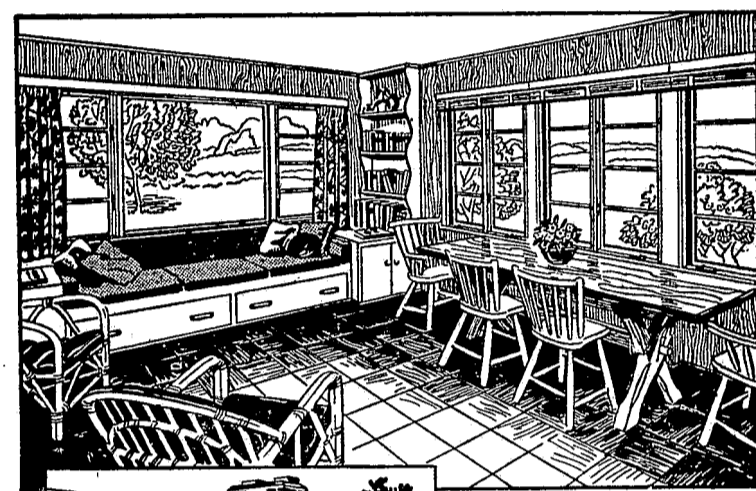
20 lb. carton, enough for 32 10 oz. packages

per carton \$4.50

Clarkston Food Lockers

7180 M-15

Phone MA 5-9241



Windowwalls

will add WINDOW BEAUTY to that extra room

WHEN YOU REMODEL your home by adding an extra room, let WINDOW WALLS of Andersen Casement Picture Window Units bring you window beauty.

These fine wood window units will capture a view, flood the new room with sunlight and fresh air. Simultaneously they will wall out unpleasant weather.

Why not call us today about WINDOW WALLS?

## DEER LAKE LUMBER & SUPPLY

7110 Dixie Highway — Corner of White Lake Road  
EVERYTHING IN BUILDING SUPPLIES

Phone MA ple 5-6698

## RUDY'S MARKET

Cane Sugar 25 lbs. 245

Bulldog Mustard or Oil 3 cans 29c

Round Steak lb. 74c

Salad Bowl Salad Dressing qt. 39c