





LAWRENCE TECH. OFFERS PRE-COLLEGE PROGRAM

High school graduates interested in taking advantage of the unusual Pre-College Program offered by the Lawrence Institute of Technology in its Evening Division have until January 27 to make application for the February term.

Legal Notices

MILTON F. COONEY, Attorney

812-15 Pontiac State Bank Bldg., Pontiac, Mich. STATE OF MICHIGAN - In The Circuit Court for the County of Oakland In Chancery.

ORDER FOR PUBLICATION

No. C-33,028 At a session of said Court held in the City of Pontiac, Oakland County, Michigan, on the 5 day of December, A. D. 1960.

Present: Hon. H. RUSSELL HOLLAND, Circuit Judge.

It appearing from the affidavit on file in this cause, that the defendant James K. Bell is not a resident of the State of Michigan, but resides in the State of California.

IT IS ORDERED that the defendant cause his presence in this cause within three (3) months from the date hereof, and that in default thereof that the bill of complaint filed by the plaintiff be taken as confessed by him.

IT IS FURTHER ORDERED that a true copy of this order be served or published according to law.

H. RUSSELL HOLLAND Circuit Judge A TRUE COPY Daniel T. Murphy, Jr., Oakland County Clerk Register of Deeds

By: James K. Conway, Deputy MILTON F. COONEY, Attorney for Plaintiff, 812 Pontiac State Bank Bldg., Pontiac, Mich. D. 22,29; J. 5, 12, 19, 20; F. 6.

HAYWARD WHITLOCK, Atty.

812 Pontiac State Bank Bldg., Pontiac, Michigan No. 76,316

STATE OF MICHIGAN - The Probate Court for the County of Oakland In the Matter of the Estate of Charles Harvey Clark, Deceased

At a session of said Court, held at the Probate Court in the City of Pontiac, in said County, on the 9th day of December, A. D. 1960.

Present: Hon. ARTHUR E. MOORE, Judge of Probate

ORDER APPOINTING TIME FOR HEARING CLAIMS

Notice is hereby given and it is hereby ordered that the time and place for hearing on claims against the above estate shall be the 6th day of March 1961, at nine o'clock in the forenoon at the Probate Court in the Court House at the City of Pontiac, Michigan.

All creditors or claimants against the above estate are further notified and ordered to prove their claims at said hearing and prior to said hearing to file written claim therefor with this Court and with the fiduciary of this estate, under oath containing sufficient detail reasonably to inform the fiduciary of the nature and amount of the claim.

It is further Ordered that notice be given to all interested parties as shown by the record in this cause by delivering a copy of this order to each of them personally, or by mailing such copy to each of them by registered mail with return receipt demanded addressed to their respective last known addresses as shown by the files and records in this cause.

And it is further Ordered that public notice thereof be given by publication of a copy of this order once each week for three successive weeks previous to said day of hearing in The Clarkston News a newspaper printed and circulated in said county.

ARTHUR E. MOORE Judge of Probate HAYWARD WHITLOCK, Attorney, 812 Pontiac State Bank Bldg., Pontiac, Mich. D. 22,29; J. 5, 12, 19, 20; F. 6.

vision have until January 27 to make application for the February term. This was announced by Mordecai Ryan, L. I. T. Dean of Academic Administration, who said the Pre-College Program is formulated for those students who want to study engineering but lack required high school subjects or need refresher courses. The program includes two night sessions weekly over a period of 20 weeks. To aid students planning an engineering career, it provides instruction in chemistry, algebra, geometry and reading improvement.

"The program is aimed to meet the needs of those who knowingly or through improper guidance have failed to take courses required for admission to an engineering college and for those who have not reached a satisfactory level of achievement in the basic subjects, due principally to an interruption in schooling," Dean Ryan said.

Appointments for interviews at L. I. T., Northwestern Highway and Ten Mile Road, can be made day or evening by telephoning KE 5-5050.

HOT RODS AT COBO HALL

A display of \$1,000,000 worth of cars which seldom, if ever take to the road. That's the story behind the 9th annual Autorama, sponsored by the Michigan Hot Rod Association at beautiful Cobo Hall starting Friday, January 6th and continuing through Sunday, January 8th.

Lee Lasky, Show Chairman, predicts that "Detroit's Greatest Auto Show" will break all records for attendance because of the great interest in the show being staged at Cobo Hall for the first time. Lasky expects last year's attendance of 43,000 will be broken.

Adding zest to this year's Autorama is the entry of three of America's top hot rod show cars. Roth's Outlaw from California, valued at \$15,000, is rated as America's top Hot Rod. Darryl Starbird's Predicta, also valued at \$15,000, from Wichita, Kansas, won the "Car of the Future" award for 1960 at Oakland, California. Then add the famous Cooper Kart, owned by George Parris, of Los Angeles, California, and it is easy to see why Lee Lasky is so enthusiastic about the 9th annual Autorama at Cobo Hall.

Proceeds of the event will be used to complete and to modernize the 43-acre drag racing site near Selfridge Field. The M. H. R. A. hopes to match the strips in California and other West Coast states.

The Association's membership of more than 750 from 24 clubs in Michigan has an age range from 17 to 68, all dedicated to the promotion of interest in hot rods and drag racing.

Each club will have an exhibit in the Autorama along with organizations from Ohio, Indiana, Illinois, Missouri, Windsor, Chatham, Toronto and London in Ontario.

Show time is 12 noon to 11:00 p. m. daily.

CARING FOR YOUR FAMILY

Children, Snow and Sniffles Children, cold weather and snow go together. In fact it's almost impossible to keep young-

sters indoors once the landscape is softened by the first real snowfall of the season. This lovely white stuff, they reason, was made to roll in—and who cares if it slides down the inside their boots? Well, mothers care—for several very good reasons. Mothers view snow with some what mixed emotions. On the credit side, it lures the children outdoors and offers enough excitement to keep them engrossed in their own yards where they can be watched. On the debit

side, it often sends them home again with suspicions of colds and sadly chapped cheeks and hands. However, when these cold-weather hazards are anticipated, a mother should be prepared to ward them off. Here are a few suggestions that might help. If the temperature is above thirty degrees, don't bundle a child up for sub-zero weather in such a way that he's bound to become overheated at play. It's possible that he might unzip his

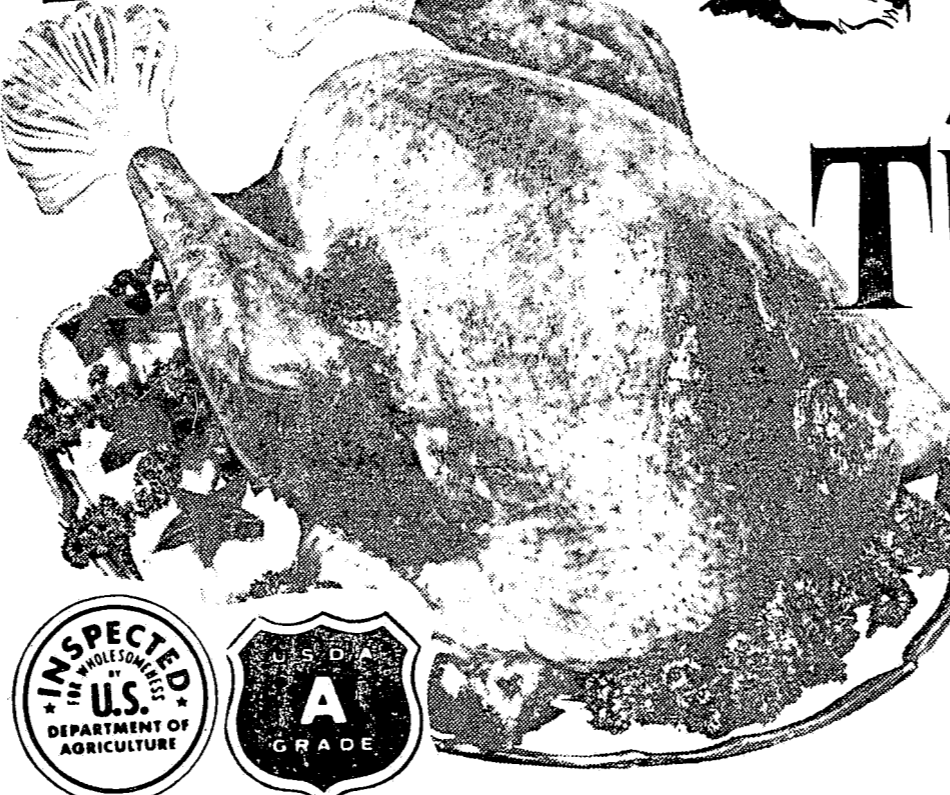
jacket or remove his scarf in order to be more comfortable—and this will almost guarantee either damp or snow-soaked. A warm, loose-fitting jacket that will allow for some ventilation and ease of movement, with an attached hood—heavy wool or lined corduroy pants—snowboots and mittens will keep him cosily clad when the climate is several degrees above freezing. When a child comes indoors after being out in the cold, he or she should remove all warm

outer clothing immediately, including snowboots, rubbers or any type of footwear that is either damp or snow-soaked. If a mother suspects that a child has the beginnings of a cold, she should give him a hot bath and pop him into bed. After he's had his dinner and when he's ready for sleep, he might be given a hot lemon and honey toddy laced with half an aspirin. Make sure he has plenty of warm covers and isn't sleeping in a

draught. Most of the time, this procedure will help nip a cold in the bud... if it's caught at its very early stages. The combination of cold air and melting snow invariably causes chapping on small cheeks and hands. This can become miserably raw and sore if it is not treated at once. A mother can usually tell if her child's face and hands are in the process of chapping if they seem much rosier than usual, even after he's

been indoors for some length of time. Therefore, when he goes to bed she should apply a soothing unguent which will hold moisture in the skin and assist in natural healing. Following day treat the child's hands and cheeks to another application before the youngster goes bounding off into the snow. Water will never penetrate this occlusive film and further weather-injury to the skin can be avoided.

MERRY CHRISTMAS



ALL GRADE "A" GOV'T INSPECTED TURKEY 18 TO 24-LB. SIZES 10 TO 15-LB. SIZES 38c LB. 45c LB. Turkeys 5 TO 9-POUND . . . . . LB. 47c



THIS WEEK'S STORE HOURS All A&P Stores Open Wed., Thurs. & Fri. 9 A.M. to 9 P.M. Christmas Eve 8 A.M. to 6 P.M.

"SUPER-RIGHT" SMOKED HAM SHANK PORTION LB. 43c BUTT PORTION, LB. 53c 12 TO 16-LB. WHOLE HAMS, LB. 49c CENTER SLICES, LB. 95c

"SUPER-RIGHT" BEEF Beef Rib Roasts FIRST 5 RIBS LB. 75c FIRST 3 RIBS LB. 79c 4th and 5th RIBS LB. 69c "SUPER-RIGHT" ROAST Leg O' Lamb . . . . . LB. 69c "SUPER-RIGHT" BREAKFAST TREAT Pork Sausage . . . . . LB. 35c

Shrimp MEDIUM SIZE . . . . . LB. 69c Completely Cleaned, Top Quality HOLIDAY POULTRY Roasting Chickens 4 to 6-LB. SIZES LB. 59c Oven-Ready Ducklings 4 to 5-LB. SIZES LB. 47c Oven-Ready Geese 8 to 14-LB. SIZES LB. 69c Stewing Chickens 4 to 6-LB. SIZES LB. 49c Capons 5 to 9-LB. SIZES . . . . . LB. 79c Frying Chickens CUT-UP WHOLE LB. 37c LB. 33c

CALIFORNIA NAVEL ORANGES 88 SIZE . . . . . DOZ. 59c

FLORIDA Easy to Peel, Zipper Skin Tangerines 150-176 SIZE DOZ. 35c

CAPE COD—LATE HOWES Fresh Cranberries . . 1-LB. BAG 19c Fresh Mushrooms IDEAL FOR STUFFING LB. 49c Brussels Sprouts . . . . . QT. BOX 29c Red Radishes . . . . . 8-OZ. CELLO BAG 10c Green Onions MILD FLAVORED . . . 3 BUNCHES 29c Tossed Salad REGALO . . . . . 12-OZ. BAG 29c Delicious Apples WESTERN RED, 113-125 SIZES 6 FOR 49c

Canada Dry Ginger Ale or Sparkling Water 2 28-OZ. BTL. 39c (Plus Bottle Deposit)

Asparagus Spears A&P BRAND—CUT, ALL GREEN . . 2 14 1/2-OZ. CANS 39c Ginger Ale VERNOR'S (Plus Bottle Deposit) . . . . . 6 24-OZ. BTL. 99c Elberta Peaches A&P FREESTONE HALVES OR SLICES . . . 3 29-OZ. CANS 89c Maraschino Cherries LIBERTY BRAND . . . . . 10-OZ. JAR 39c Sweet Pickles DAILEY CROSS CUT . . . . . 22-OZ. JAR 29c Wax Beans COMSTOCK—WHOLE OR FRENCH STYLE . . . . . 3 16-OZ. CANS 49c Ripe Olives EARLY CALIFORNIA GIANT SIZE . . . . . 4 No. 1 CANS 99c Polish Dills DAILEY WARSAW . . . . . 64-OZ. JAR 49c

PRICED FOR CHRISTMAS SAVINGS! 30c OFF EVERY BOX Mellowood Nylons SALE PRICE! DELUXE SHEER (60 gauge 15" denier), Sizes: 8 1/2-11. Full-fashioned with self seam. 2 pairs \$1.99 SOLD ONLY AT A&P

"SUPER-RIGHT" FULLY COOKED Semi-Boneless Hams WHOLE OR HALF LB. 69c All prices in this ad effective thru Saturday, Dec. 24th in all Eastern Michigan A&P Super Markets THE GREAT ATLANTIC & PACIFIC TEA COMPANY, INC. A&P Super Markets AMERICA'S DEPENDABLE FOOD MERCHANT SINCE 1859

JANE PARKER—AMERICA'S FAVORITE Fruit Cake LIGHT CAKE . . . . . 5-LB. SIZE 3.99 Mince Pie SAVE 16c JANE PARKER . . . . . 8-INCH SIZE 49c CHRISTMAS COOKIES PFEFFERNUSSE, ANISE OR HOLIDAY STYLE JANE PARKER . . . . . PKG. 39c Ice Cream CRESTMONT . . . . . HALF GAL. CTN. 69c Eggnog RISDON'S . . . . . QUART CTN. 59c Cream Cheese PHILA. 3-OZ. PKG. 10c Sharp Cheddar WIS. LB. 59c Real Whipped Cream 8-OZ. CAN 39c Whipping Cream . . . . . 1/2-PT. CTN. 45c Dip 'n' Chip DRESSING—RISDON'S 8-OZ. CTN. 29c

News Liners Bring Fast Results

A French Flavor Secret Enhances Baked Alaska



Baked Alaska is always a treat. But made in a large tube pan with a new Deluxe Cake Mix, it becomes something even more special. Prepare a Duncan Hines Deluxe Angel Food cake according to the directions on the package. When a cake has cooled thoroughly, cut a cake in half lengthwise, about 1" wide and 2" deep. Fill this with ice

# merry CHRISTMAS GREETINGS to all

Holidays are wonderful times to be festive and happy in the company of friends. We send our warmest wishes for a very merry Yuletide.

May good health and good fellowship be yours in full measure!

ANDERSON PLUMBING & HEATING  
Clarkston

AL'S WATERFORD HARDWARE  
Waterford

APEX EQUIPMENT CO.  
7183 N. Main St. Clarkston, MA 5-2211

BEATTIE MOTOR SALES, INC.  
"Your Ford Dealer", Waterford

BEN M. POWELL  
Clarkston

BERG CLEANERS  
Clarkston

B. F. EVANS EQUIPMENT  
6485 Dixie Highway, Clarkston

BOB'S HARDWARE  
Clarkston

BOOTHBY'S OLD FARM SHOP  
7081 Dixie Highway, Clarkston

CLARKSTON BAKERY  
Clarkston

CLARKSTON CAFE  
Clarkston

CLARKSTON MOTOR SALES  
Chrysler — Plymouth, Clarkston

CLARKSTON SPORTING GOODS  
2. S. Main Clarkston

CLARK'S STANDARD SERVICE  
A A A Service, 9757 Dixie Hwy., Clarkston

CLARKSTON SHOE SERVICE  
24 S. Main Street, Clarkston

CLARKSTON STATE BANK  
Clarkston

DEER LAKE LUMBER & SUPPLY COMPANY  
7010 Dixie Highway, Clarkston

DEXTROM JEWELERS  
4432 Dixie Highway, Drayton Plains

DICK GRIFFIN'S SUNOCO SERVICE  
Andersonville at Airport Rd., Waterford

DIXIE BAIT STORE  
6547 Dixie Hwy., Clarkston

DR. A. W. EMERY  
Waterford

DR. E. M. DAVIS, JR.  
6687 Dixie Hwy., Clarkston

FOLEY & BEARDSLEY  
3250 White Lake Road, Clarkston

FRICK'S ELECTRIC  
8060 M-15, Clarkston

FULLER'S STANDARD SERVICE  
N. Main St., Clarkston, MAple 5-9161

GIDLEY ELECTRIC SHOP  
Waterford

GLENN A. ELLERTHORPE  
Bookkeeping, 20 S. Main

HASKINS CHEVROLET  
Chevrolet — Oldsmobile, Clarkston

H. L. MCGILL & SON  
Clarkston

HOWE'S LANES  
Dixie Highway, Clarkston

HUNTER'S PARTY STORE  
U. S. 10 near M-15, Clarkston

H. W. HUTTENLOCHER INSURANCE AGENCY  
306 Riker Bldg., Pontiac, MAple 5-2436

JACK W. HAUPT PONTIAC SALES & SERVICE  
Clarkston

JIM PRICE & COMPANY  
Water Well and Pump Contractors, MAple 5-6941

J. H. ALGER HARDWARE  
Clarkston

KIEFT ENGINEERING  
Clarkston

KING'S INSURANCE AGENCY  
Clarkston

LAATSCH'S NORTHERN T-V SERVICE  
U. S. 10 and M 15, Clarkston

LEWIS E. WINT FUNERAL HOME  
Clarkston

LOWRIE DAIRY  
Clarkston

McNEIL NURSERY  
6670 Dixie Hwy., Clarkston

MILLER & BEARDSLEE LUMBER COMPANY  
Clarkston

MORGAN'S SERVICE  
28 S. Main, Clarkston

MORRISON DRUG STORE  
Waterford

O'DELL'S DRUG STORE  
Clarkston

OLD MILL TAVERN HOTEL  
Waterford

PONTIAC STATE BANK  
Drayton Plains Branch

PORRITT DAIRY  
Quality Dairy Products, Lake Orion

RAGATZ BROS. TEXACO SERVICE  
6695 Dixie Highway, Clarkston

RITA'S BEAUTY SHOP  
Clarkston

RONK'S BARBER SHOP  
Clarkston

ROY BROS. STANDARD SERVICE  
U. S. 10 and M-15, Clarkston

SHARPE — GOYETTE FUNERAL HOME  
Clarkston

SOLLEY REFRIGERATION  
3819 Ortonville Road, Clarkston

STANDARD OIL PRODUCTS  
Byron Nolan, Agent, Clarkston

TAYLOR'S 5 and 10  
Clarkston

TERRY'S MARKET  
Clarkston

TOWN SHOP  
Clarkston

THE CLARKSTON NEWS  
Clarkston

TURPIN — HALL SHOES  
4464 Dixie Highway, Drayton Plains

VILLAGE FRIENDS OF ART  
"Glory to God in the highest  
and on earth, peace, good will toward men."

WATERFORD FUEL & SUPPLY COMPANY  
Waterford

WATERFORD HILL GREENHOUSES  
Waterford

WATERFORD LUMBER COMPANY  
Waterford

WATERFORD MARKET  
Sam Felice, Prop., Waterford

WINGEMIRE FURNITURE STORES  
Holly — Fenton

WRIGHT SHEET METAL COMPANY  
Waterford


YE OLDE TYME SHOPPE  
21 N. Main, Clarkston



# Gifts for a Merrier Christmas


**Pants**  
Cotton Knits  
Velvets  
Wools  
Cords  
**\$5.95**  
to  
**\$14.95**

**Sweaters**  
**\$4.95 to \$25.00**



**Blouses**  
**\$2.95**  
to  
**\$10.95**

**SKIRTS -**  
Wools - Velvets - Cords  
**\$7.95 to \$25.00**



**Other Styles**  
**\$17.95 to \$45.00**

- Sizes -  
5 - 15  
10 - 20  
15½ to 20½

**YOU'RE A V.I.P. IN YOUR**




*Minx Modes*


This hour's molded jersey... scoops a demure neckline to dramatic back depths... with a magnificent frosting of see-through lace medallions. Satin bound in figure-following all wool jersey, fully lined. In Pastels. Sizes 9 to 15.

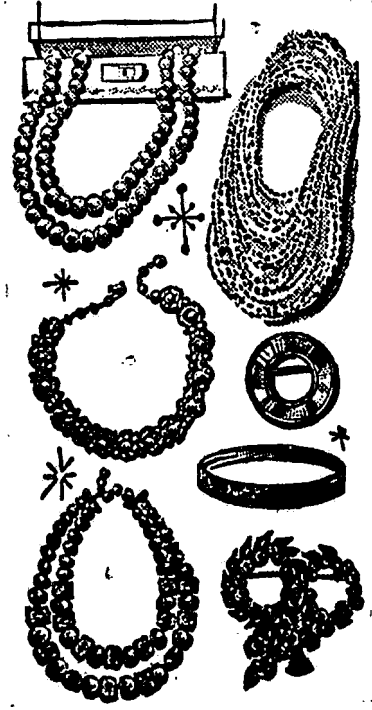
**for MEN**

**To Hear Him Cheer, Choose Here!**

Gifts from here win cheers from men at Christmas... because it's our business to know what men like!




- 
- By Superba - Ties **\$1.50 & 2.50**
  - By Superba - Gloves **3.95 to 6.00**
  - By Superba - Scarfs **2.95 to 5.00**
  - By Van Heusen - Jackets **14.95 up**
  - By Van Heusen - Vests **3.95 to 7.95**
  - By Daniel Green - Slippers **7.00 & 8.50**
  - By Hickok - Belts **1.50 to 12.50**
  - By Van Heusen - Sport Shirts **3.95 up**
  - By Van Heusen - Pajamas **3.95 up**
  - By Jantzen - Sweaters **10.95 up**
  - By Van Heusen - Shirts **4.50**
  - By Van Heusen - Handkerchiefs **Boxed 3 for 1.00**
  - Wallets **1.95 to 15.00**
  - By Hickok - Jewelry **1.50 to 10.00**

- 
- Beads & Collars**  
(in all wanted colors)
  - Pendants**
  - Bracelets**
  - Necklaces**
  - Pins**
  - Earrings**
  - \$1.00 to \$15.00**



- Head Wear - Ear Warmers**
- Scarfs -**  
**\$1.00 to \$5.00**
- Scarfs - Stoles** **\$1.00 to \$8.95**
- Gloves - Mittens** **\$1.00 to \$6.00**

Save time save steps by getting all your gifts for both men and women under our one roof!

• OPEN EVENINGS 'TILL CHRISTMAS •

# TOWN SHOP

31 S. Main Street  
MAple 5-1511  
Clarkston, Michigan



# NEWS LINERS

**MASON CONTRACTOR** — Over 30 years experience. Brick and stone fireplaces, patios, retaining walls, project houses and garages. Edward B. Thomson & son, 8798 Transparent, MAple 5-2153. 33tkc

**JEEP FOR SALE** — 51, 4-wheel drive, 7:00x16-6 ply tires, heavy duty generator and clutch, full cab, good shape, \$700.00. Phone MAple 5-1097.

**SPECIAL CHRISTMAS CAKES** — Cakes for all special occasions, sheet cakes for groups. Catherine and Shirley. Call MAple 5-1481 or MAple 5-1098. 15c3

**WATER SOFTENERS**, completely automatic, \$210. Manual type \$79.95. Solley Refrigeration Co., 3819 Ortonville Road, MAple 5-5947. 10tkc

**GRACE H. ROCKWELL** MA 5-1744 11 S. Holcomb — Representing — **FLOYD KENT, INC.** Realtor Established in 1916 FE 2-0123 2200 Dixie Hwy. PONTIAC

**FURNACES SOLD, REPAIRED, Cleaned, MAple 5-1661. 5tkc**

If you want a **BETTER** deal on kitchen or laundry appliances see Solley Refrigeration. MAple 5-5947 18tkc

Professional carpet and furniture cleaning. Wall washing and floor cleaning. Call for free estimate. Reasonable rates. FEderal 4-1077. 11ckc

Siamese Stud Service, champion stock. MAple 5-2386. 1tkc

**FOR SALE** — Formals, like new, in everything but the price! Small sizes. Colors and all white. Have a new party dress for the Holidays! MAple 5-1568. 13tkc

**FOR SALE** — 12-room house. Full basement. Outside city limits on one acre of ground. Automatic heat. Garage. Will take equity in smaller house as down payment. FEderal 4-1156. Broker. 9tkc

**FOR SALE** — Need a birthday, anniversary or all-occasion sheet cake? Catherine and Shirley will bake and decorate your cakes to suit your need. Call MAple 5-1098. 14c4

**FOR SALE** — excellent land contract. MAple 5-2162. 3tkc

**BULLDOZING, sand & gravel, top soil, fill dirt.** Charles Scott, MAple 5-1090. 37tkc

**FURNITURE UPHOLSTERING** done in my home, reasonable, workmanship guaranteed. MAple 5-2376. 47tkc

**SEE OUR WIDE selection of Lamps: Modern, Contemporary and colonial.** All prices. Winglemire Furniture Stores — Holly and Fenton.

**OLD FASHIONED Handy Man.** Save your odd jobs. Give me a call. I'll fix them all. MAple 5-1781. 14p5

**KEEP YOUR Holidays bright, with candlelight. Pungent Bayberry and pine scented candles.** Open evenings except Saturday until Christmas

**BOOTHBY'S OLD FARM SHOP** 7081 Dixie Hwy. MA 5-1996

**PAINTING** — interior and exterior. Call Don Ferguson, MA 5-2366. 36tkc

**For Mom** — We have lovely platform rockers. Many colors to choose from. Winglemire Furniture Stores — Holly & Fenton.

**— STOCKING STUFFERS —** Klaediscopes, 15c, Dollhead pencils, 8c, tops 10c, and many others. Open evenings except Saturday until Christmas **BOOTHBY'S OLD FARM SHOP** 7081 Dixie Hwy. MA 5-1996 14c4

**SNOW PLOWING and SNOW REMOVAL.** Driveways and parking lots. MAple 5-0661. 17tkc

**REMODELING, Additions, Garages, New buildings** by reliable licensed builder. **R. F. WAID, MAple 5-4161 44tkc**

For service on any Refrigerator, call Solley Refrigeration. Phone MAple 5-5947. 30tkc

**WE HAVE A NICE selection of Westmoreland Milk Glass** to choose from. Winglemire Furniture Store — Holly.

**FOR SALE** — Two bed-room modern home. Must be moved to new location. Includes deep well pump and hot water heater. Best offer takes it. MAple 5-1125. 12tkc

**FOR SALE** — 3-Bedroom ranch, 2 years old with 1 and 1/2 bath. All large rooms and large lot. Nice location in Waterford. For quick sale, \$100 down and \$77 per month. Balance on land contract, \$12,400. Call FEderal 4-1156. Broker. 9tkc

**FOR SALE** — Trade your old furniture in on new furniture. Easy Terms. TRADING POST, 968 M-15, Ortonville. Phone NA 7-2635. 1tkc

**FOR SALE** — Boy's 1 1/2 year-old bicycle. New tires. MAple 5-1119. 9tkc

**WANTED TO BUY** — Office furniture and equipment. OR 3-9767. days. 1tkc

**SLIP COVERS, expertly tailored.** References. MAple 5-1781. 14p5

**FOR SALE** — Boy's 1 1/2 year-old bicycle, 26". New tires. \$18.00. MAple 5-1119. 9tkc

**COLONIAL ITEMS** — Maple magazine baskets, letter holders, wall shelves, spoon holders make ideal gifts. Winglemire Furniture Stores — Holly and Fenton.

**OUR TABLE OF GIFTS \$1.00 or less,** will make it easy for you to select those little items you need to fill out your Christmas shopping. Open evenings except Saturday until Christmas **BOOTHBY'S OLD FARM SHOP** 7081 Dixie Hwy. MA 5-1996

**FOR SALE** — Four-room house in Pontiac near Catholic church. Fine for older couple. \$6500. Reasonable down payment. FEderal 4-1156, Broker. 9tkc

**IF YOU CAN'T MOW YOUR own lawn,** just call MAple 5-1701 for fast, efficient service. 36tkc

**FOR SALE** — Christmas Specialties. China lamp, Hand painted plates. Sewing chair, Marble-topped tables. Old Cranberry glass. Spinning wheel, all re-finished. Pine chest, pine cupboard, and pine table. You name it, we got it. Use lay away plan for Christmas. Come and browse around. Open from 9 to 5 every day except Friday. Open evenings by appointment. Y-Knot Antique Shop, 10345 Oak Hill Road 3rd house east of U. S. 10. MEIrose 7-5198. 14c4

**FOR SALE: 1960 Pontiac Ventura.** 4 door hard top. Complete power. By owner. 6382 Snowapple Drive. 15tkc

**FOR SALE** — Singer slant needle sewing machine, used very little. Full balance only \$68 or payments of \$8 per month. Call FEderal 4-0905. 17c

**WILL BUILD stores to suit in Clarkston Plaza, on M-15 in Dixie Highway.** Call Townsend 9-7100, Ext. 378. 17c4

**WANTED** — Reliable person to take on payments of \$6.20 per month on Singer cabinet style sewing machine. Full balance only \$41.60. FE 5-9407. 17c

**FOR SALE** — A modern Singer Zig Zag sewing machine in console cabinet. Makes designs, button holes, overcasts, without attachments. Assume payments of \$6.50 per month or \$67.80 full balance. FE 5-9407. 171

**NOT ALL THE YOUNG MEN "GO WEST!"** The 1961 census of population figures have been released to this office and while we have the complete reports we felt that the ones pertaining to this area were the ones of the utmost interest.

The official population count of the State as of April 1, 1960, was 7,823,194. This is a gain of 1,451,428, or 22.8 percent, over the 6,371,766 inhabitants of the State in 1950.

Oakland County has a population of 890,259 people, with Independence Township claiming 10,890. Clarkston Village proper has a census of 769.

There are 47,107 people in the Waterford Township and 2,664 in Springfield Township. Brandon Township has 3,187 inhabitants, with 771 in Ortonville Village.

Bulldozing & excavating, stone, fill dirt; trucking of all kinds. sand and gravel, roadway gravel, Ben M. Powell, phone MAple 5-6621. 39tkc

Costume Jewelry, Imported China. Reproduction of Early American Glass and Lamps. Many outstanding gift items. Cards and Gift Wrapping **HANDCRAFT HOUSE, 5775 Dixie Hgwy. in Waterford. 30tkc**

**FOR RENT** — Office Space. Large paneled office, ample parking, immediate occupancy. Call MAple 5-2333 or MAple 5-2341. 9tkc

**HOUSE TO RENT** — Unfurnished, Lotus Lake, Waterford. 1 1/2 story, 3 bedrooms. Children welcome. Lake Privileges. Orlando 3-9562. 11ckc

**THOMAS F. BOOTHBY** Representing **Howard T. Keating Co.** Complete Real Estate Service MAple 5-1996 7081 Dixie Hwy Clarkston

Smokers make a nice gift for your male friend or relative. \$2.50 and up. Winglemire Furniture Stores Holly & Fenton.

**CHAIRS RECOVERED** — Dinettes and kitchen. Vinyl and Naugahyde. Free estimates. Pick-up and delivery. Call MAple 5-1673. 15p4

Sofa Pillows in an array of colors. \$1.79 and up. Winglemire Furniture Stores — Holly & Fenton.

**Knibbs Landscape Trucking** — Fill, Sand, Gravel, Crushed Stone. Also Black Loam Top-Soil at \$11.50 per 5 1/4 yards, Clarkston area. FEderal 5-9708. NAtional 7-3310. 14c4

**FOR SALE** — Black Dirt and Peat for sale. MAple 5-1239. 14Ptk

**FOR SALE** — Gas stove, cream color, \$15. Maple single bed and springs, \$5. MAple 5-0801. 16c2

**WANTED** — Day Work. Baby sitting and nursing. Ruby Bradford. 53 Church Street. 16c2

**THE NICEST GIFTS Are Tie! wrapped.** See our assortment of paper and ribbons. Open evenings until Christmas, except Saturday. **BOOTHBY'S OLD FARM SHOP** 7081 Dixie Hwy. MA 5-1996

**FOR SALE: 50% discount on boxed Christmas cards.** Reduced prices for inventory clearance on typewriters, adding machines, cash register, gift wrappings, file boxes, pens and pencils and gift items. Forbes Printing and Office Supply, 4500 Dixie Hwy., next to Pontiac State Bank. Orlando 3-9767. Open evenings until Christmas. 15tkc

**— VERY SPECIAL —** Just arrived. Fine English bone china cups and saucers. \$1.98. Open evenings until Christmas, except Saturday. **BOOTHBY'S OLD FARM SHOP** 7081 Dixie Hwy. MA 5-1996

**FOR SALE** — Antique Ladies walnut roll-top desk. Beautiful condition. Original finish and knobs. Also antique black wrought iron hanging lamp. White milk glass shade and smoke bell. Electrified. Call MAple 5-3791. 17tkc

**FLUFFY kittens to fill a Christmas stocking.** They're yours for the asking. Call MAple 5-3915. 17c

**ROBERT C. BUEHRIG** PHYSICIAN and SURGEON Office Phone: MAple 5-5761 Res. Phone: MAple 5-1405

**Rockwood W. Bullard, Jr.** John F. Naz **PHYSICIANS & SURGEONS OFFICE HOURS BY APPOINTMENT ONLY PHONE: MA 5-5761 5790 M-15 Clarkston**

**DR. H. B. YOH** PHYSICIAN and SURGEON 21 E. Washington Office and Resident Phone MAple 5-3616 if no answer Call 112 — NAtional 7-3760.

**MATHEWS CLINIC** Albert L. Mathews, D. O. Eye Physician and Surgeon Groveland on the Dixie MEIrose 7-7281

**DR. DON STACKABLE** DENTISTRY — X-RAY 5770 M-15 — MA 5-3966 Clarkston

**MORRISON DRUG** Prescriptions and Sundries 5809 Dixie Hwy. Waterford Phone: ORlando 3-2993 Emergency Number OR 2-1844

**DR. A. W. EMERY** DR. D. R. KARR **VETERINARIANS** 5540 Dixie Hwy. Waterford Phone: ORlando 3-1936

**DR. E. M. DAVIS, JR.** VETERINARIAN 6687 Dixie Hwy. Clarkston MAple 5-1821

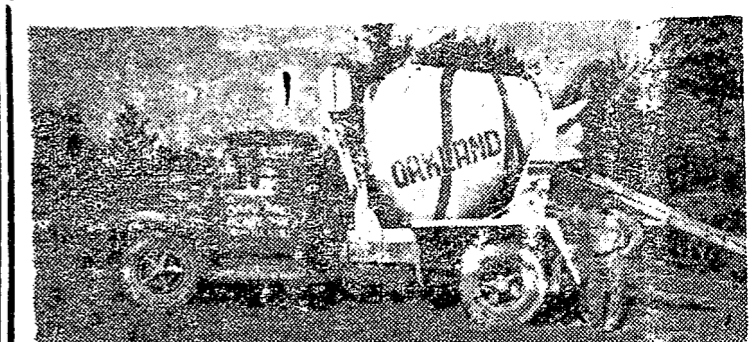
**Sharpe - Goyette Funeral Home** FRIENDLY, HOMELIKE ATMOSPHERE 24 Hour Ambulance Service Clarkston, Mich. Phone MAple 5-1766 Collect

**KING'S INSURANCE AGENCY** Office, Clarkston State Bank Clarkston, Michigan Phone: MA 5-5051 Charles W. Robinson Phone: MA 5-1964 Isabel K. Bullen Phone: MA 5-4881

**MODERN STORAGE** LOCAL and LONG DISTANCE MOVING **GAUKLER STORAGE CO.** Phone: FE 2-9241 9 Orchard Lake Ave.

**Laatsch's** Northern T-V Service 6734 Dixie Highway — Clarkston Phones: Business, MA 5-5311 Home, OR 3-8682

**24 HOUR OIL BURNER SERVICE** H. L. McGill & Son MAple 5-3111 MAple 5-3112



**Oakland Ready-Mix** FINEST NAME IN CONCRETE LOCALLY OWNED AND OPERATED 6335 Sashabaw Road MAple 5-5951 Clarkston, Mich.

News Liners Bring Fast Results



2 lg. cans	89c
Cake Mixes swansdown	4 boxes \$1.00
Sugar Domino Powdered	2 boxes 25c
Michigan Sugar	5 lb. 45c
Black Pepper Durkee	1/4 lb. 39c
Turkey Fancy Hen	lb. 49c
Smoked Picnics	lb. 29c
Frying Chicken Cut-Up	lb. 29c
Oranges California	doz. 69c
Celery, Pascal	Large Stalk 19c
Mixed Nuts	2 lbs. 98c
Oleo Blue Ribbon	2 lbs. 35c
Ice Cream Velvet	1/2 gallon 59c
Oxydol	large box 29c
Pineapple Sliced	2 No. 2 cans 49c

**RUDY'S** 9 SOUTH MAIN MA 5-1912

**A-1 Used Cars**  
 You get the Best where they sell the Most!

And because Ford Dealers sell so many used cars, they can give you...

- \* A BIG SELECTION OF GOOD USED CARS!
- \* HONEST VALUE AT LOWEST PRICES!
- \* EASIEST, LONGEST TERMS POSSIBLE!
- \* A-1 CARS THAT ARE INSPECTED, RECONDITIONED WHEN NECESSARY AND ROAD-TESTED!
- \* THE ASSURANCE OF DEALING WITH A RELIABLE, HERE-TO-STAY BUSINESSMAN!
- \* THE BEST DEAL ON YOUR TRADE-IN!

Ask your Ford Dealer about his **A-1** Performance Protection Policy!

**BEATTIE MOTOR SALES** ORlando 3-1291 Waterford, Mich.

NEWS LINERS BRING RESULTS

**SPECIAL PURCHASE** — Turnbuckle Workshop Kit  
36 self-locking pegboard fixtures only \$1.95

**THOR SPEEDRILL** —  
1/4" capacity — Geared Chuck \$14.95

**THORSEN SOCKET WRENCH SETS** - \$4.69 to \$23.99

Glassware — Ceramics — Corning Electromatic Percs.

**ICE SKATES — DOLLS — CRADLES — IRONS**  
and **IRONING BOARDS**

**FIRE ENGINES — SAFE LITTLE TRAINS**  
and many other Gift Items

**Bob's Hardware**  
MA-5-6111 27 S. MAIN • CLARKSTON

**Apex Equipment Company**  
7183 N. Main (M-15) Clarkston, Michigan  
Maple 5-2211

**BICYCLES**

**BOYS or GIRLS**  
20" Deluxe with Training Wheels  
Reg. \$39.95 Special at \$30.95

**MURRAY WHEEL GOODS**  
**TOYS**  
at Competitive Prices  
Open Sundays — Until Christmas

**Card of Thanks**

I would like to express my gratitude to our Fire Department, whose quick action, my doctor says, saved my life. I'd like to thank the First Methodist Church for the lovely flowers sent to me, and, of course, the many friends, who remembered me in so many thoughtful ways.  
Mrs. H. L. McGill

**CHRISTMAS CARDS STARTED 85 YEARS AGO**

American Christmas cards were launched on a commercial scale exactly 85 years ago by an eminent Boston lithographer named Louis Prang.

A penniless immigrant when he landed in America in 1850, Prang made a big impact on America's celebration of Christmas, earning him the title of "Father of the American Christmas card."

Prang got started publishing greeting cards in a rather strange way. In 1874, one year before he marketed his first American Christmas cards, a young art student by the name of Miss D. E. Whitney, who worked in his shop, presented him with a painting of a budding moss rose which she had done.

There was something about this simple moss rose that appealed to both his artistic sense and to his commercial instincts. Prang saw a golden chance to increase his business. He decided to print "Merry Christmas" on small floral decorated cards as the British had been doing since the early 1840's.

Prang was an expert in the

**RITA'S BEAUTY SHOP**  
33 Miller Road, Clarkston

PERMANENTS  
COLD WAVE  
SHAMPOO & WAVE  
SCALP TREATMENT

Call Maple 5-4466  
For Appointment

art of what he called "chromolithography" and his work and reputation was well established throughout Europe. By using slabs of a particular limestone found only in Bavaria, he printed pictures in multi-colors, as many as 32 different shades, at times. He reproduced them so perfectly that you could scarcely tell them from the original paintings.

He had Miss Whitney's painting copied on lithographic stones and attached a holiday sentiment to it. He experimented with his British customers first and the next year Prang tried out the Christmas cards on the American people. Within five years he was turning out five million cards a year, and it wasn't long before Prang cards, trimmed with silk fringe and lace, also became known world wide.

Unlike today's Christmas cards, Prang used very few of the standard Christmas motifs on his cards. His favorites were illustration of spring flowers, harvest scenes and pictures of children playing. The Killarney rose, of all things, was the most popular of all. Religious scenes began to appear on Prang's cards in the mid 1880's.

Prang's delicate cards were typical of the Victorian era in which he lived. Many of them were equipped with silk cords for hanging, others were edged with inch-wide fringe and folded cards dripped with tassels. Fan-shaped cards bedecked with both fringe and tassels, competed with lustrous satin-and-plush creations. There were even some cards encrusted with blown glass frosting.

To insure that he would always have an ample supply of the finest designs for his cards, Prang conducted an annual competition with prizes totalling as much as \$3,000.

In the 1880's people were paying up to \$1. each for a deluxe Prang card. The costly cards were usually stamped on the back with a notice that the design received one of Prang's prizes.

Prang continued to make Christmas cards for 20 years, until German imitations began to crowd the market. A proud craftsman, Prang retired from the greeting card scene and turned his efforts to other activities,

rather than have his quality cards compete with the cheap German imports.

**GOLDEN GLOVES HOPEFULS IN SERIOUS TRAINING**

Bill McDowell, 160 lb. boxer from Pontiac, who will represent Clarkston, in the Golden Gloves Tournament, to be held soon, is expected to bring home the title with him, after the big matches in Grand Rapids. Bill is in excellent condition, and is training rigorously. He lost the title last year by a split decision.

Jerry Wilmot, Clarkston's own, is also working hard and results have been so good that those who "know" claim he will bring back the second title, from Grand Rapids.

Tickets for the Tournament held on January 14 at the Junior High can be purchased at Ronk's Barber Shop, at the Sporting Goods Store, or at the High School. It is suggested that since there are a limited number of tickets, local fans would be wise to get theirs in advance, so that there will be no chance of dis-

appointment.

Saturday night features boxing for the little fellows at the Community Center gym. Last Saturday Johnny Evans and Freddie Wertman put on a match which really tickled the older boys. Stag Allen, who refereed the match, said that they actually did some fast footwork. Johnny is the son of Mr. and Mrs. Jack Evans, 6430 Snowapple Drive and Freddie is the son of Mr. and Mrs. Bob Wertman, 62 S. Holcomb. About 20 boys in this age group show up, on Saturday night.

Mr. Armstrong, manager of the gym, and Mr. Allen are both pleased to see so many fathers of the boys working out in the gym, taking an active interest in the work their boys are doing. They are most welcome at any time.

**NEWS LINERS BRING RESULTS**

**- DRY CLEANING -**

— "Immaculately spotless — Perfectly finished" —  
**HODGES**

Between Clarkston Sporting Goods and Alger Hardware  
4 S. Main Clarkston

**THE CLARKSTON CAFE**  
YOUR FAMILY RESTAURANT

Breakfast (Open 6:30 A.M.), Luncheon, Dinners  
SPECIAL Plate Lunch 85c — Fried Chicken or Ham

— LARGE Variety of Sandwiches From 25c —

COLD BEER and ALE To Take Out  
(low beer store prices)

FREE PARKING IN REAR

Use Rear Entrance

— Jessie and Bob Parker — Same Owners Since 1941 —

**BIG JIM'S GOOD FOOD**

Shrimp, Chicken, Steak, Chops

— Meals — Lunches — Carry - Outs —

6738 Dixie Hwy.

MAple 5-9321

**Christmas Caroling**

The Wesleyan Choir of the First Methodist Church will sing Christmas Carols in the lobby of the Clarkston State Bank, Friday, December 23, at 5:00 P. M. Mrs. Norton Redwood will direct the group.

Refreshments will be served from  
3:00 to 5:00 P. M.

**Clarkston State Bank**

Member Federal Reserve System  
Member Federal Deposit Insurance Corporation  
CLARKSTON, MICHIGAN

**Please Order Your Holiday**

**Poultry Early**

**Round Steak** U. S. Choice beef lb. **89c**

**Cranberries** cello pkg. 1 lb. **19c**

**SHRIMP** Seabrook peeled-deveined 14 oz. pkg. **\$1.39**

**Apple Sauce** Mott's giant 32 oz. jar **2 59c**

**Grapes** Tokay 2 lbs. **29c**

**Chicken ROASTING** fresh dressed lb. **49c**

**Strawberries** Searand Farms 1 lb. pkg. **39c**

**Celery** pascal stalk **19c**

**PORK & BEANS** Campbell's family size 2 cans **39c**

**Coffee** Hill's Bros. lb. **63c**

**Orange Juice** BIRD'S EYE 4 cans **79c**

**Bacon** "Our Own" Hickory Smoked Sliced lb. **49c**

**Terry's Market**

"Your Complete Food Market"

MAple 5-4341

Clarkston

**A LAST MINUTE Christmas Shoppers' Gift Guide**

**ODELL DRUG** 10 S. Main Street  
Clarkston

**Tops In Quality**

**Unexcelled In Service**

**Competitive In Price**

MANICURE SETS  
KEM PLAYING CARDS  
PARKER PENS  
DRESSER SETS

KAYWOODIE PIPES  
HAIR BRUSHES  
AMMITY WALLETS  
TIMEX WATCHES

SIGN UP TODAY

**FREE**



**HOLIDAY DRAWING**

**LIONEL ELECTRIC TRAIN SET AND SPANDEX DOLL HOUSE SET**

**NOTHING TO BUY!**

LET'S HAVE AN OLD-FASHIONED CHRISTMAS

**Gifts Galore**

Coty ... Jewelite ... Westlox ... Remington  
Timex ... Bourjois ... Schick ... Sunbeam  
Amity ... Wrisley ... Sylvania ... and many others!

Drawing will be held here, December 24.

**Cosmetic Gifts**

• FINE FRAGRANCES •

TWEED FLAMBEAU  
WOODHUE SEVEN WINDS  
INTIMATE FAME  
ARPEGE DESERT FLOWER  
and many others

OLD SPICE  
by SHULTON



"TINA BOX" 125 plus tax

She'll adore a "Fragrance boutique" all her own... guest sizes of Toilet Water, Talcum, Bubbling Bath Crystals, and Body Sachet, fresh and sparkling with the scent of roses and spice.



Old Spice Pro-Electric 1.00  
The before-shave lotion.

New Old Spice Gift Set 4.50  
Large sizes After Shave Lotion, Cologne, Body Talcum.



New Desert Flower Gift Set 6.00  
Toilet Water, Beauty Bath, Hand and Body Lotion in brass holder.



Spray Cologne 2.50  
... in Desert Flower, Early American Old Spice, Escapade, Friendship Garden fragrances.

Prices plus tax where applicable.

New Fragrance Fling 2.50  
Toilet Water in four fragrances: Desert Flower, Early American Old Spice, Escapade, Friendship Garden.

