

OAKLAND COUNTY SHERIFF'S DEPARTMENT

1986

ANNUAL REPORT



JOHN F. NICHOLS  
SHERIFF

CAPTAIN JAMES H. CURTIS  
CHIEF OF STAFF

R-  
OCDOC  
HV  
7979  
.02  
1986

NOLIN  
SHERIFF

OAKLAND COUNTY  
REFERENCE LIBRARY  
1200 NORTH TELEGRAPH ROAD  
PONTIAC MICHIGAN 48053

I N D E X

SHERIFF'S OFFICE ..... 4

ADMINISTRATIVE SERVICES DIVISION..... 5

CORRECTIVE SERVICES DIVISION.....13

PROTECTIVE SERVICES DIVISION.....35

TECHNICAL SERVICES DIVISION.....51

PREPARED BY:  
Dale A. Cunningham  
Administrative Services Division

OAKLAND COUNTY

JUN 9 1987

Reference Library

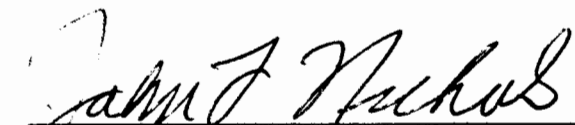
The Sheriff's Department is responsible for the delivery of law enforcement services to the unincorporated areas of the County; the provision of contractual service for law enforcement as required by participating townships; the provision of support services in the areas of criminal investigation, scientific analysis of evidence, and polygraph testing; the operation of dispatch functions and communication with State data banks; the maintenance of law enforcement records and identification records; and the provision of security and traffic control for contracted special events.

The Sheriff's Department accepts, delivers and serves papers, summons, and subpoenas; executes Civil Court Orders as directed by the Circuit and other courts of the County; collects fees; conducts confiscations; and effects tax sales as directed by courts of competent jurisdiction.

The Sheriff's Department is also responsible for the maintenance of the County Jail; and for the housing, care and custody of all prisoners in the County sentenced to one year or less, all nonbonded prisoners awaiting trial in Circuit Court, and those detained for arraignment or trial in the several District Courts.

The Sheriff's Department police the several courtrooms of the Oakland County Circuit Court and provides for the transportation of prisoners for arraignment and/or sentence from the jail to court, and the delivery of sentenced prisoners from the County Jail to the appropriate Michigan State Corrections institutions. The Sheriff's Department also furnishes transportation to and from the various courts in the County for other departments in the County. The Sheriff's Department has a statutory responsibility for the patrol of 450 lakes in the area for which it maintains a fleet of boats and provides divers for underwater recovery and rescue attempts.

Under the State Secondary Roads Bill, the Sheriff's Department is responsible for providing traffic accident enforcement on secondary roads of Oakland County.

  
\_\_\_\_\_  
JOHN F. NICHOLS  
SHERIFF

The top three staff of the Sheriff's Department has over 100 years of Law Enforcement experience.

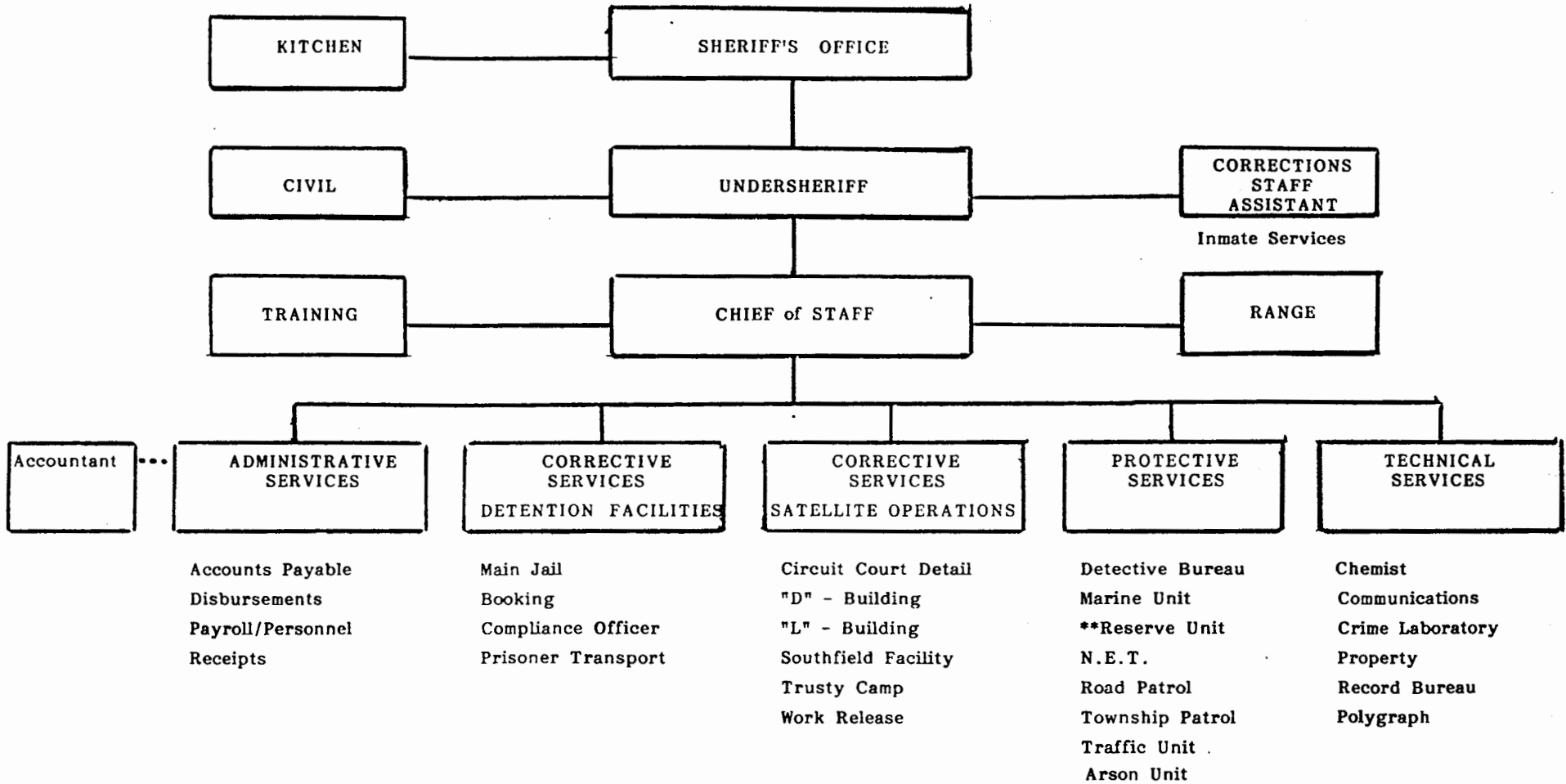
Sheriff John F. Nichols has 46 years of Law Enforcement. He spent 31 years with the City of Detroit starting as a patrolman and promoted through the ranks of Lieutenant, Inspector and finally Police Commissioner. He served as Undersheriff for 4 years, then as Police Chief of Farmington Hills for 7 years. He was elected Sheriff and took office on January 1, 1985 and has been the top Law Enforcement Official since that time.

Undersheriff Billy J. Nolin has 30 years of service with the Sheriff's Department. He was hired on November 18, 1957 and promoted to Detective in 1965, reclassified to Lieutenant in 1973 and promoted to Captain in 1978. He has been a Commander in every division of the Department. On January 1, 1985 he accepted the post of Undersheriff, and has been in that capacity since. He has numerous professional accreditations in his file, one of the most recent as graduate of the National Sheriffs Institute for Undersheriffs.

Captain James H. Curtis, Chief of Staff, has 26 years of service in Law Enforcement, 3 years with the City of Berkley and 23 with the Sheriff's Department. Captain Curtis was hired in 1964, promoted to Detective in 1968 then to Chief of Patrol in 1973. In 1978 he was reclassified to Lieutenant

then in 1980 promoted to Captain. On January 1, 1985, he accepted the assignment of Chief of Staff under the current Sheriff. Captain Curtis has a Bachelor of Science in Criminal Justice and is a graduate of the Federal Bureau of Investigation (F.B.I.) National Academy.

OAKLAND COUNTY SHERIFF'S DEPARTMENT  
ORGANIZATIONAL CHART



SHERIFF'S OFFICE

The Sheriff's Office is responsible for the planning, organizing, staffing, coordinating and management of all the law enforcement policies and programs for the Sheriff. The Division acts as the liaison for all other police agencies in the County and is the Command and Control Center for the entire Department.

Oakland County  
Crime Statistics

	<u>1982</u>	<u>1983</u>	<u>1984</u>	<u>1985</u>	<u>1986</u>
Murder	3	2	2	4	1
Rape and Attempts	32	32	36	53	52
Robbery	58	62	51	76	66
Aggravated Assaults	220	171	156	238	282
Larceny	4,491	4,102	4,141	3,999	4,607
Auto Theft	441	393	528	634	702
Burglary and Attempts	2,337	2,166	1,896	1,753	1,777
Arson	<u>161</u>	<u>146</u>	<u>139</u>	<u>143</u>	<u>150</u>
TOTAL	<u>7,743</u>	<u>7,074</u>	<u>6,949</u>	<u>6,900</u>	<u>7,637</u>

ADMINISTRATIVE SERVICES

DIVISION

Directed by:

DALE A. CUNNINGHAM

BUSINESS MANAGER

Dale A. Cunningham has 10 years of service with Oakland County, the last year in his current capacity as Business Manager for the Oakland County Sheriff's Department. Prior to his employment with the Sheriff's Department, he worked 5 years with the Oakland County Budget Division as a Budget Analyst and 4 years as an Accountant with the Accounting Division.

He has a Bachelor of Science Degree in Accounting from Lake Superior State College and a Masters of Public Administration Degree from Oakland University.



## ADMINISTRATIVE SERVICES

The Administrative Services Division of the Oakland County Sheriff's Department is an essential Division and provides services for all members of the Department.

Included in its functions are personnel records, accounts payable and receivable, bonds and fine/costs, ordering and maintaining all supplies, the Civil Unit and the Training Unit.

The Business Administration Unit is responsible for the day-to-day accounting, purchasing, and personnel record-keeping tasks necessary to maintain the operation of the Sheriff's Department. This Unit controls the budget and expenditures in excess of \$26 million, processes records on over 500 employees, and maintains all the necessary internal controls to operate a large Department. The Unit records for deposit over \$1.9 million in cash and checks for either the bonds or inmate accounts.

The Civil Unit is comprised of one Sergeant, two clerks, five deputies and two Para-Profes. This Unit is responsible for serving summons and complaints, garnishments, subpoenas, show cause notices, executions, mortgage foreclosures, and judicial (sales) for both Civil and Criminal cases.

The Training Unit is staffed by a Sergeant who is responsible for the scheduling and training of all Department personnel, including the Reserve Officers. Files are maintained on each person and updated as training or schooling is provided. The Sergeant is responsible for keeping abreast of all new laws or rulings, advising Department personnel, and providing them with the necessary information to function properly and efficiently.

**SHERIFF  
DEPARTMENTAL RECEIPTS**

<u>Sheriff</u>	<u>1986</u>
Board and Care	\$ 137,104
Commission from Public Telephone	--
Fee Income	47,966
Fingerprints	5,066
Gun Registrations	7,450
Inspection of Boat Livery	895
Liquor Control	3,369
Mileage	23,542
Miscellaneous	8,883
Photostats	23,722
Refunds - N.E.T.	23,878
Reimbursement for Salaries	135,990
Special Deputies	4,054,497
Transportation of Prisoners	12,300
Refund - Prior Years Expenditures	--
CRIMINAL JUSTICE TRNS. FUNDS	52,189
Subpoena Fees	1,686
 <u>Southfield Jail</u>	
Special Deputies	\$ 379,027
 <u>Work Release</u>	
Board and Care	\$ 362,260
 <u>Marine Safety</u>	
County Auction	\$ 3,200
Marine Safety Program*	150,000
Snowmobile Safety Program	--
	<hr/>
Total Marine Safety	\$ 153,200
TOTAL SHERIFF	<u>\$5,433,024</u>

\*Estimate

1986 ANNUAL REPORT  
ADMINISTRATIVE SERVICES  
CIVIL DIVISION

CIVIL:

Summons & Complaints, Garnishments, Subpoenas, Show Cause Notices, etc.	9,418
Executions	424
Mortgage Foreclosures & Judicial (Sales*)	<u>633</u>
TOTAL PROCESSES	<u>10,475</u>

CRIMINAL SUBPOENA

No separate count kept

REVENUE

Service Fees	\$ 47,965.80
Mileage Fees	23,542.77
Escheatable Funds	97,772.08
Individual Trust Accounts	32,886.35
Special Trust Funds	<u>22,293.21</u>
TOTAL REVENUE	<u>\$224,460.21</u>

\*Dollar Total of Real Estate Subject  
to Foreclosure: \$32,130,757.68

## TRAINING UNIT

The Training Unit is staffed by a Sergeant and a Typist II. The Unit assists the Department in determining training needs, scheduling, record keeping, designing programs, instructing and coordinating all training activities.

The P.A. 302 State Training Fund and the County Training Fund are the two primary sources of revenue for both the In-Service and Academy Training Courses.

Training activity for this Department for the year 1986 has been broken down into Administrative Services, Corrective Services, Protective Services, Technical Services and Reserves. All supervisory and communication personnel have been included in the Protective Services assignment classification.

### Training Statistics

Administrative	572 Hours
Corrective Services	8,596 Hours
Protective Services (Road Patrol, Detective Bureau, Marine Division)	
A. In-Service	9,432 Hours
B. Field Training Hours (FTO)	11,960 Hours
Reserves	673 Hours
Technical Services	1,679 Hours
Range Training	5,040 Hours

## GUN RANGE

The Oakland County Sheriff's Department Gun Range provides firearms training for members of the Sheriff's Department, Prosecutor's Office, Friend of the Court Officers, Animal Control, Safety Division, Treasurer's Office, Circuit Court and Auditing Division. It also provides training for approximately fifteen (15) outside police agencies.

Personnel are required to participate in the firearms training on a monthly basis. This training consists of various situations involving the use of firearms with mandatory qualification four (4) times per year.

The Range Officer is responsible for issuing and maintaining departmental weapons and ordering ammunition for use on the Range.

The Range Officer's function is to maintain records and order equipment and parts necessary for the proper operation of the Range.

The Range is operated Monday through Friday, with early hours to accommodate the officers who work the midnight shift and, late hours for the officers working the afternoon shift.

DEPARTMENT QUALIFICATION

Sheriff's Officers Trained	300	AMMO USED	<u>19,800</u>	YTD	<u>145,245</u>
Auditing	2	AMMO USED	<u>132</u>	YTD	<u>774</u>
Animal Control	14	AMMO USED	<u>924</u>	YTD	<u>6,466</u>
Circuit & Probate Court	4	AMMO USED	<u>264</u>	YTD	<u>1,542</u>
Friend of the Court	9	AMMO USED	<u>594</u>	YTD	<u>5,252</u>
Prosecutor's Office	7	AMMO USED	<u>462</u>	YTD	<u>1,554</u>
Safety Division	32	AMMO USED	<u>2,112</u>	YTD	<u>16,330</u>
Treasurer's Office	5	AMMO USED	<u>330</u>	YTD	<u>2,404</u>
New Personnel Trained	32	AMMO USED	<u>792</u>	YTD	<u>4,045</u>
Reserves Trained	185	AMMO USED	<u>3,960</u>	YTD	<u>36,296</u>
Outside Departments Trained					
Officers Trained					
Sheriff Service Agents Trained					
Ammo Received		AMMO USED	<u>29,370</u>	YTD	<u>219,908</u>
Handguns Repaired				YTD	<u>29</u>
Cleaned & Inspected				YTD	<u>28</u>
Long Guns Repaired				YTD	<u>30</u>
Cleaned & Inspected				YTD	<u>17</u>

Lectures & Demonstrations: Oakland University, Rochester Police Department, Waterford Police Department, and White Lake Police Department, Sylvan Lake, Keego Harbor, Orchard Lake, and Milford Police Department.

CORRECTIVE SERVICES

DIVISION

(Main Jail)

Directed by:

RICHARD W. HUBBLE

CAPTAIN

Captain Richard W. Hubble has 30 years of service with the Oakland County Sheriff's Department and during that time he has served under the administration of 3 Sheriffs.

Captain Richard W. Hubble was hired on July 10, 1958 into the Patrol Division. In 1969, Captain Hubble was promoted Detective Sergeant. In 1974, he was promoted to Chief of Detectives. In 1985, then promoted to the rank of Captain.

Captain Richard W. Hubble has served 26 years of his 30 years of service in Protective Services with 11 of those 26 years as Lieutenant. Now he is serving as Captain of the Corrective Services Division.



CORRECTIVE SERVICES DIVISION - 1986

(Main Jail)

Lieutenant Barry K. Eriksen, Lieutenant Gerald N. Reeves, and Lieutenant Franklin E. Mouser are the three Lieutenants under the command of Captain Richard W. Hubble. There is one vacancy for the Lieutenant's position. There are eleven (11) Sergeants assigned to the Main Jail and approximately 170 employees, both uniformed and civilian.

During 1986, there were 62 new Service Agents hired of which 53 of those Service Agents are still here. Also, in 1986, there was a total of 41 promotions (Service Agent to Deputy I, Deputy I to Deputy II, Deputy II to Sergeant).

Operating under the guidelines of the Federal Consent Agreement of 1982, the Division was able to make substantial compliance except in the areas of overcrowding, exercise, and staffing. Overcrowding impedes the proper management of prisoners and exposes the County to continued liability. Use of Out-County Jails has given some relief, but this procedure is costly, and falls short of actual needs.

CORRECTIVE SERVICES DIVISION - 1986

(Main Jail)

THE OAKLAND COUNTY JAIL COMPLEX (Main Jail) is a maximum security facility and houses approximately 450 inmates plus 30 inmates in the Holding Tanks.

In 1986, two renovated buildings were completed in May to house inmates, one building to house 32 females and the other building to house 60 males. This plus the housing in other county jails relieved overcrowding for a short time. By the fall of 1986, we were again sleeping inmates on the GYM floor.

Completion of plans for a new 244-bed SOUTH ADDITION, renovation of the BOOKING and MEDICAL SECTIONS, and an air-conditioning system were approved by the Board of Commissioners in October. Groundbreaking was on 12/12/86.

In regards to the Federal Consent Agreement, the major violations still are the OVERCROWDING and the EXERCISE for the inmates.

a. OVERCROWDING

The OVERCROWDING caused violation in the exercise area because of the lack of space available and the air-conditioning system will not be completed until Summer, 1987.

In order to keep no more than 30 inmates in Holding Cells, we housed between 60 and 80 inmates in the GYM between the hours of 11 p.m. and 7 a.m. When the jail population is over maximum, we cannot get the 60 to 80 inmates out of the GYM during the day; thus, no exercise and overtime to watch them.

In 1986, some of the staffing needs were addressed. Six (6) positions were granted for the SOUTHEND pickup and delivery, BONDING, and PROPERTY. A Deputy II, Clerk, and three (3) part-time Interviewers were hired under a State grant. For CLASSIFICATIONS, a Pre-Trial Service Unit was added by the Courts to do Bond Reviews of inmates and then present back to the Courts for their review. We received 9½ positions of the fifteen (15) positions asked for.

CORRECTIVE SERVICES DIVISION - 1986

(Main Jail)

STATISTICS

<u>CAPACITY</u>	450
Male	402
Female	48
Prisoners Admitted	15,065
<u>BOOKING</u>	
New Arrests	15,885
Bonded, Released, and Transfers	11,033
<u>LINE-UPS</u>	252
<u>SOUTHEND RUN</u>	
Delivered	2,511
Picked Up	4,182
<u>VISITATION/RECREATION</u>	
Total number of inmates visited	9,092
Number of inmates taken to exercise areas	8,383

OAKLAND COUNTY  
REFERENCE LIBRARY

## INMATE SERVICES PROGRAM

### 1986 ANNUAL REPORT

#### I. SCOPE OF PROGRAM ACTIVITY:

Inmate Services was established in 1975 to provide comprehensive programming and treatment to inmates confined in the Oakland County Jail.

Today, the services which are provided directly by staff assigned to the Inmate Services Unit includes:

- Intake and Needs Assessment
- Individual Counseling
- Group Counseling
- Family Counseling
- Substance Abuse Assessment, Education and Treatment
- Crisis Intervention
- General Liaison Services
- Referral to Community Agencies and Treatment Facilities

#### II. SUMMARY OF PROGRAM ACTIVITY:

During 1986, some 6,316 inmates were referred to the Inmate Services staff for emergency and routine casework.

<u>TYPE OF SERVICE</u>	<u>UNITS OF SERVICE</u>
Mental Status Evaluation/Assessment	4,349
Crisis Intervention	3,763
Individual Counseling	4,114
Group Contacts	8,417
Substance Abuse/Individual Contact	1,044
Substance Abuse Group/A.A. Services	9,043
TOTAL UNITS/DIRECT SERVICE	41,287

III. INMATE SERVICES 1987 PROGRAM GOALS

1. Continue to cultivate family counseling as an important adjunct of the Inmate Services Program.
2. Expand Substance Abuse Services to include Narcotics Anonymous in direct provision of services to confined persons.
3. Continue and expand the use of psychological testing and diagnostic tools to guide and measure the effectiveness of jail treatment.
4. Provide for increased staff hours at the Trusty Camp, Work Release Center and Pre-Trial Satellite Facilities.
5. Modify assessment process to control for duplication which may result from the enhanced classification process.
6. Develop and distribute educational materials for Correction Officers and Service Agents assigned to the Correction Facilities.
7. Obtain training for all program staff from the Oakland County Health Department in substance withdrawal and detoxification.
8. Increase and direct professional development activities of the Inmate Services Staff. This is to incorporate formal and informal training activities; job enlargement and job expansion when indicated.

## PRETRIAL SERVICES UNIT

Pretrial Services is a division of the Circuit Court Administrator's Office and began its operations in July of 1986. The staff consists of one director, 4 caseworkers, 2 clericals, and a student intern. The office is located in the basement of the Oakland County Jail.

The purpose of Pretrial Services is to provide judges with the most complete and current information about pretrial detainees for bond reviewing purposes. Caseworkers interview all pretrial detainees who do not post bond within 2 working days after arraignment. Caseworkers then verify information provided by the defendant with community references such as family, employers, and educators. Computerized criminal histories and warrant information are also obtained on each defendant. The results of these investigations are reported to the judge before the defendant's next court appearance.

Pretrial Services also conducts periodic reviews of the pretrial jail population to determine case delays, reasons for continued detention unrelated to the current charge(s), i.e. warrant holds, and other information of interest to the court.

The program is a liaison between the courts, the jail, and members of the community. The staff provides the public with information regarding bonding procedures and court proceedings.

Approximately 54 detainees are interviewed each week and a recent analysis revealed pretrial release is 15% above what it was in 1985, when the program did not exist.



## OAKLAND COUNTY JAIL HEALTH PROGRAM

### 1986 ANNUAL REPORT

In 1986, the Jail Health Program saw many changes. Most noticeable was the changing of the jail physician. In March, Dr. Avci resigned from the Jail Clinic and the Family Practice Group from Pontiac General Hospital assumed the position of responsible physician for the Program. Heading the group was Dr. Paul Werner and his associates, Dr. Michael Smallwood and Dr. Alice Lindsey.

In August, Dr. Werner left Pontiac General Hospital and Dr. Smallwood assumed the position at the Jail Clinic. Beginning in mid-December, Dr. Richard Quevy began to come to the jail and assist Dr. Smallwood.

The new jail renovations were approved and construction is scheduled to begin in the Clinic area in the spring of 1987.

An active case of Tuberculosis was diagnosed at the Trusty Camp and an extensive testing program was conducted.

In August, the National Commission of Correctional Health came in to inspect the Jail Health Program and in October we were awarded our accreditation.

Also in August, the sixth position in nursing was filled, after a long vacancy in that position.

In May of 1986, due to the increasing patient load and data entry into the computer systems, Oakland County Sheriff's Department and Oakland County Health Division, an additional clerk was assigned to the Clinic to assist with the everyday operation involving the medical records.

The conclusion of 1986 showed a substantial increase in patient contacts at the Jail Health Program. The beginning of 1987 has all the indications the increase will continue.

CORRECTIVE SERVICES  
MENTAL HEALTH PROGRAM

I. PROGRAM INTRODUCTION

"Mental Health" services in Oakland County are provided for those individuals who manifest signs and symptoms of mental illness, depression, severe anxiety or general mental/functional impairment.

The mental health program in the Oakland County Jail evolved from resources for psychological consultation which were made available through an "Inmate Rehabilitation" project grant in 1975.

Initially, the mental health component was seen as a part of the total human service needs of those confined in the Oakland County Jail. As part of a comprehensive programming effort, a part-time psychological consultant was assigned under contract with the jail to provide training, consultation and to complete assessments within the confines of the correctional setting.

Current program objectives involve the following:

1. To provide psychological evaluation and diagnostic services to persons confined in Oakland County Corrections facilities;
2. To provide direct medical and psychological treatment to those identified as persons in need of care;

3. To provide information and instruction to facility staff and officers relative to the observation, monitoring and management of the mental health population within corrections facilities.

II. SERVICES PROVIDED/MENTAL HEALTH SERVICES

Sheriff's Department/Inmate Counseling Staff work cooperatively with Community Mental Health assigned Psychologist and Psychiatrist to provide comprehensive mental health services within the Oakland County Corrections system:

<u>FUNCTION</u>	<u>PROVIDER</u>
Initial Assessment	Inmate Services*
Mental Status Evaluation	CMH Psychologist
Psychological Evaluation	CMH Psychologist
Psychiatric Evaluation	CMH Psychiatrist
Group and Individual Therapy	Inmate Serv. & CMH
Medication and Medical Management	CMH Psychiatrist
Patient Monitor and Support	CMH & Inmate Serv.
Family Support and Information	CMH & Inmate Serv.
Treatment Referral	CMH & Inmate Serv.
Crisis Intervention and Weekend Crisis Call Program	Inmate Services

Services are provided in this order:

1. Assessment is complete; subsequent treatment, support or referral to psychologist/psychiatrist is made;
2. Psychological evaluation is completed;

3. If indicated, psychiatric review is scheduled;
4. Treatment initiative is developed and authorized by the psychiatrist and communicated with primary staff assigned.

It should be noted that a relatively small number of those referred to Inmate Services are subsequently referred to the mental health team assigned to the jail; jail counselors provide direct services to those suffering from anxiety and those expressing interest in routine counseling services.

## FOOD SERVICE UNIT

The Kitchen provides 3 meals a day, 7 days a week, 52 weeks a year, year after year. This unit provides special diets, proper food intake, the proper amount of nutrients and did this 880,295 times during 1986. In addition to the number of meals served, they also find time to bake their own bread, rolls, and cookies. This is all done on a very small cost of \$1.11 per meal. At today's food cost, this is a tremendous feat. The Food Service Chief also manages the commissary fund for supplying cigarettes, candy and some durable goods for inmates.

The profit generated from the Commissary Fund buys televisions, exercise machines, etc. for use by the inmates. It also pays for 3 full-time positions and 3 part-time positions for running the Commissary and the Library for the inmates. All of this is accomplished at no expense to the County Taxpayer. The following page details the amount of sales and expenditures this fund generates.

JAIL INMATE COMMISSARY FUND  
STATEMENT OF OPERATIONS  
December 31, 1986

Operating Revenue:	
Sales	\$374,451.51
Income From Investments	<u>7,646.30</u>
Sub-Total	\$382,097.81
Less: Cost of Sales	<u>260,625.75</u>
Total Revenue	<u>\$121,472.06</u>
Operating Expenses:	
Salaries	<u>\$ 49,684.47</u>
Fringe Benefits	<u>\$ 13,912.11</u>
Contractual Services:	
Memberships, Dues and Publications	\$ 7,409.20
Equipment Repair and Maintenance	3,474.37
Equipment Rental	591.00
Miscellaneous	4,968.55
	<u>\$ 16,442.72</u>
Commodities:	
Inmate Recreational Supplies	\$ 16,964.00
Indigent Orders	6,455.45
Dry Goods and Clothing	158.00
	<u>\$ 23,577.45</u>
Capital Outlay	<u>\$ 10,932.32</u>
Internal Services	<u>\$ 7,812.78</u>
Total Expenses	<u>\$122,361.85</u>
Net Operating Income (Loss)	<u>\$ (889.79)</u>
Other:	
Operating Transfers In	<u>\$ 416.00</u>
Net Income (Loss)	<u>\$ (473.79)</u>

CORRECTIVE SERVICES

SATELLITE DIVISION

Directed by:

CHARLES L. COOPER

CAPTAIN

Captain Charles L. Cooper has 28 years of service with the Oakland County Sheriff's Department.

He was hired on July 14, 1958 as a patrolman. In 1959, he was assigned to the Jail as a Jail Guard, and on October 13, 1966 he was promoted to Chief Jail Guard.

He was reclassified in 1976 to Lieutenant.

In December of 1979, he was transferred from Corrective Services to Administrative Services - Civil Unit, and in March of 1982 he was promoted to Captain of Administrative Services.

In April of 1986, he was reassigned to the newly created Corrective Services - Satellite Division.



1986 ANNUAL REPORT  
CORRECTIVE SERVICES - SATELLITE DIVISION

The Corrective Services Satellite Division was created in April of 1986. The new division consists of six (6) units. Southfield Facility, Work Release Facility, Community Work Camp, "D" Building, "L" Building and Circuit Court Operations.

The division is staffed by seventy-seven (77) employees and is headed by Captain Charles L. Cooper.

SOUTHFIELD FACILITY

The Southfield Facility is located in the Southfield Civic Center. Under contract with the City of Southfield, the Oakland County Sheriff Department provides staffing of the facility where Oakland County female inmates are housed and new arrests from the City of Southfield are detained prior to arraignment.

During the 1986 year 2,321 new inmates were processed through this facility, 1,943 inmates were released and the average daily count was 26 inmates.

### WORK RELEASE FACILITY

The Work Release Facility is located on Telegraph Road across from the County Complex.

Inmates assigned to this facility are, by approval of the courts, allowed to commute from the facility to their place of employment while serving their sentence. A fee of ten dollars (\$10) per day room and board is assessed to the inmate for participation in this program.

Inmate population during 1986 has ranged from a low of 70 inmates to a high of 130 inmates.

Fees collected for room and board during 1986 totaled \$387,628.95, making this facility almost self-sufficient.

The total number of inmates admitted to this program in 1986 was 810 with releases totaling 755. The average daily count for the year was 103 inmates.

### COMMUNITY WORK CAMP

The Community Work Camp is located at 1690 Brown Road, Pontiac, Michigan.

This facility was first opened in 1970 and was built by trustees who worked under supervision of County work supervisors. In 1984 the Camp was expanded to hold a maximum of 120 inmates. Placement in this facility is determined by the Oakland County Sheriff's Department Staff.

A medium security facility, the Camp provides work details to local governments on request. Most recently, a new project provided for two six-man crews to work cleaning up County-Owned Parks in Addison and Independence Townships. These crews were released to Officers of the Oakland County Safety Division who supervised the operations. Crews have also been provided during times of civil distress such as tornadoes for clean up details.

During the 1986 year 713 inmates were assigned to the Camp, 755 were released and the average daily count was 103 inmates.

#### TWO NEW FACILITIES

In the late summer of 1986 two newly renovated buildings were opened on the Complex grounds to provide relief for the severely overcrowded Main Jail Facility.

"D" Building is the old dry cleaning building which houses a maximum of 32 pre-trial and sentenced female inmates. Since it opened the population has usually been at capacity. Inmates are transported from this facility daily for medical needs and court dates. They receive the same privileges and opportunities afforded inmates at the Main Jail.

"L" Building is the old County Laundry Building which houses a maximum of 60 male inmates in five twelve-man dormitories.

Trusties who work at the Main Jail are transported daily from this facility to the Main Jail. In addition to the Trusties, inmates not serving time are also assigned to this facility. Since this facility opened the population has usually been at capacity.

Inmates assigned to this facility are transferred to the Main Jail for medical needs and court dates. They are afforded the same privileges as received by inmates at the Main Jail.

#### CIRCUIT COURT DETAIL

The Circuit Court Detail is responsible for the transportation and guarding of inmates from the Main Jail to the respective Circuit Courts for trial and other Court ordered procedures.

In addition this unit is responsible for the pick up and delivery of inmates to the various State institutions as directed by the Courts.

PROTECTIVE SERVICES

DIVISION

Directed by:

CARL G. MATHENY

CAPTAIN

Captain Carl G. Matheny has 21 years service with the Sheriff's Department. He was first employed as a patrolman and was promoted to the rank of Corporal; Detective; Lieutenant; and Captain. His commands have included Community Services, Protective Services, and Corrective Services. In September of 1985, he was again given command of the Protective Services Division after serving seven (7) years in Corrective Services.

1986 ANNUAL REPORT  
PROTECTIVE SERVICES DIVISION

The Protective Services Division contains the following units: Sheriff's Road Patrol, Investigation, Traffic Enforcement, Alcohol Enforcement, Marine and Snowmobile Enforcement, and the Sheriff's Reserve program.

The Patrol Unit is responsible for responding to citizen requests in the townships under contract, and providing assistance to other requesting departments. The Sheriff's Department is able to provide a full program of services from initial response through investigation and arrest. Aside from the criminal activity calls, the Patrol Officers handle several thousand services calls.

The Traffic and Alcohol Enforcement units augment the Patrol Officers by directing their skills in selective areas. While their primary duties are enforcing traffic laws and the apprehension of drunk drivers, they provide a back-up force to the regular officers.

Investigations Unit follows up on all felony crimes and investigates major crimes and criminal activity. An Arson Unit within the Detective Unit specializes in fire investigations.

The Marine Unit provides patrol and complaints on the county lakes. Complaints, accidents, thefts, and drownings make up the bulk of the work in the summer. In winter, the unit provides snowmobile patrol. A dive team is maintained year-round for body and evidence recovery. The Sheriff's Reserves and Explorer Scout programs are also administered through the Marine Unit.

Within this Division is the responsibility for inspections of all Sheriff's Department buildings, equipment, personnel, and the reporting of any deficiencies with recommendations to the Sheriff and Undersheriff. Internal investigations involving any members of the Oakland County Sheriff's Department are conducted as required.

Crime statistics for the contracted areas were up 10% in part one crimes, and down slightly in part two crimes when compared to 1985. Homicide, criminal sexual conduct and robbery crime were down, but aggravated assault, larceny, motor theft, and arson were up. As individual townships vary so does the criminal activity. Percentage numbers had a wide range, but the actual incidents were insignificant in some categories.

Orion Township added two officers to their contract in 1986, and Highland Township and Rochester Hills added one each.



Total police contracts at the end of December, 1986 were 75.

Property damage accidents were up 11% for the year of 1986 over 1985, but injury accidents increased by only 1%. Fatalities were down 25% indicating that while the number of accidents increased, the severity was less. Seat belt usage has undoubtedly had a positive effect on deaths and injury.

## DETECTIVE BUREAU

The Detective Bureau of the Oakland County Sheriff's Department is a unit within the Protective Services Division. It is staffed with a Lieutenant in command of thirteen Detective Sergeants and two Patrol Investigators. Eleven of the Sergeants and a Patrol Investigator are responsible for investigating criminal activity occurring within contracted areas. One Sergeant is responsible for the inspection of liquor establishments and the enforcement of liquor laws. One Sergeant and one Patrol Investigator are assigned to serving warrants.

Personnel assigned to criminal investigations handle major crimes reported to the Department. They are charged with collecting evidence, interviewing witnesses, interrogating suspects, making arrests, and assisting the prosecution in presenting the case in court. Personnel performing the function work closely with other police agencies and often participate in multi-jurisdictional investigations.

Investigators assigned to warrants process in-coming criminal and civil warrants. They locate the named individual and arrange for the individual to appear in court on the matter. The officers often travel within the State to pick up wanted persons arrested by other jurisdictions. They also handle all extraditions with the County of Oakland and the Governor's Office.

## 1986 INVESTIGATION REPORT

### Investigations

Cases Assigned	2,699
Arrests	553
Recovered Property	\$863,970.00

### Arrest Profile

Criminal Sexual Conduct	35
Weapons Violations	22
Larceny	154
Assault	108
Check Violations	53
Breaking & Entering	151
Murder	1
Robbery	17
Receiving & Concealing	58
VCSA	28
Miscellaneous	167

### Arson Unit

Scenes Worked	
Investigation by O.C.S.D.	128
Assists	<u>107</u>
TOTAL	235

Types of Fires	
Arson	155
Accidental	49
Undetermined	27
Information	4
Fatal Fires	3

Dollar Loss	
Arson	4,748,595.00
Accidental	1,191,400.00
Undetermined	1,942,255.00

### Departments Assisted:

Auburn Hills	12
Berkley	2
Birmingham	2
Bloomfield Hills	2
Clare County Sheriff	1
Ferndale	1

Departments Assisted: CONTINUED

Groveland	2
Hazel Park	21
Holly	8
Keego Harbor	4
Novi	5
Oak Park	1
Orchard Lake	1
Oxford	7
Rochester	2
Royal Oak	5
Royal Oak Township	1
South Lyon	2
Walled Lake	5
Waterford	1
West Bloomfield	2
White Lake	18

Fugitive Apprehension Team

In October, 1986, five Investigators from the Sheriff's Department joined forces with five Prosecutor's Investigators to address the career criminal problem. The following is their productivity for that three month period.

<u>Total Arrests</u>	57
Absconding Bond	22
Larceny	5
Criminal Sexual Conduct	1
Assault (Felony)	1
Armed Robbert	4
B & E	8
Receiving and Concealing	7
MDOP (Felony)	1

## LIQUOR ENFORCEMENT

The Liquor Enforcement Division of the Sheriff's Department is operated solely by one Detective/Sergeant Investigator. His duties consist of investigating all liquor complaints, violations of State Liquor Statutes, and violations of State Law.

He is also responsible for processing the form 1800 from the Liquor Control Commission. He investigates and makes recommendations to the L.C.C. concerning new Class C Licenses, SDM/SDD Licenses, Tavern Licenses, Beer/Wine Wholesaler Licenses, new Club Licenses and permits to expand or change present licenses.

This officer is also in charge of the Precious Metal and Gem Dealers of Oakland County. He processes all applicants and investigates any complaints that are received.

All records on Liquor Enforcement and Precious Metal and Gem Dealers, are maintained in this division.

Total Investigations	136
Permits & Licenses	90
MLCC Violations	20
Appearance Tickets	44
Arrests	3

## WARRANT UNIT

The Warrant Unit consists of three (3) Warrant Officers and one (1) Clerk. All warrants received are checked to determine if they are valid and in good order. They are then registered, a card is typed with the subject's name, address, physical description, charge, court and amount of bond. The warrant is then entered into LEIN and assigned to our warrant officers for arrest.

The Sheriff's Department has the responsibility to extradite all out-of-state arrested subjects. This usually takes ninety days, which is processed in Circuit Court. After extradition is approved by the Prosecutor's Office, a certified copy of the warrant and mug shot are sent to the police agency of that state and arrest is made, then subject is extradited. Warrant officers are sent to return the subject to the State of Michigan. When an arrest is made, the subject is booked and housed until he is arraigned by the Magistrate. If the subject lives out of Oakland County, a copy of the warrant is mailed to the police agency in that area to execute the arrest.

Misdemeanor warrants are handled the same as felony warrants except letters are sent to the wanted subject. If the subject does not respond in ten days, warrant officers will make the

arrest. If the subject has moved or we are unable to locate him/her, the warrant is filed. Letters are sent on all traffic warrants. If the subject does not clear the warrant with the court, the warrant is entered in LEIN and filed. We are unable to send warrant officers out on all traffic warrants.

Letters are sent on all civil warrants. If the subject does not make arrangements with the court to take care of the warrant, an arrest is made. Letters instruct the subject of how to take care of the matter pending without an arrest.

Warrant Division

Incoming Warrants	
Traffic	250
Misdemeanor	1,590
Felony	383
Paternity	<u>23</u>
TOTAL	2,246
Cancelled Warrants	
Traffic	394
Misdemeanor	1,848
Felony	217
Paternity	<u>45</u>
TOTAL	2,504
Out-of-County Warrants	
Registered	82
Cancelled	86
Out-of-State Warrants	
Registered	130
Cancelled	122

## ALCOHOL ENFORCEMENT TEAM

On April 10, 1980, the Oakland County Sheriff's Department implemented a Countywide Alcohol Enforcement Project, aimed at reducing accidents, injuries, and deaths related to the drinking driver. Drinking drivers in Oakland County are involved in at least half of the fatal accidents each year. This project began on a 1.5 million dollar Federally funded four year grant, which was state subsidized through the Michigan Office of Highway Safety Planning. It was the first of its kind in Michigan and has served as a model for other communities in this state and others.

Known as the "Alcohol Enforcement Team," this special team was comprised primarily of Sheriff Deputies (6), supplemented with State Police and local police officers that cooperate in this effort, while the "team" is working in their jurisdictions. The team concentrates its efforts in the same way as the selective enforcement unit, by working the times-of-the-day, and days-of-the-week that the majority of alcohol related accidents occur. Special computerized data is used to determine the roadways and areas in Oakland County which have the largest percentage of alcohol related accidents. The "team" then rotates working these areas.



Extensive training has been given to all of the traffic officers, both County and local, who work with the Alcohol Enforcement Team. All of these officers were given specialized training on the recognition and arrest of drinking drivers. Many traffic officers have also been trained as certified breathalyzer operators. This became of critical importance as the Sheriff's Alcohol Enforcement Team placed Michigan's first three "Mobile Breathalyzers" in operation on December 12, 1980.

In the Spring of 1984, after a one year extension, Federal money was no longer available for this special Alcohol Enforcement Project. With the support of County Executive, Dan Murphy, and the Oakland County Board of Commissioners, five Alcohol Enforcement Deputy positions were financially maintained so that the project could continue. As a result, these Sheriff Deputies continue to patrol for drunk drivers in all areas of Oakland County, Tuesday through Saturday nights. Through voluntary participation a few local departments still provide a car to supplement our "team" effort when we are working in their jurisdiction. In addition, a toll-free number to report drunk drivers (1-800-MI-REDDI), Report Every Drunk Driver Immediately has been placed in the central dispatch area of the Sheriff's Department.

## MARINE UNIT

The Oakland County Sheriff's Department Marine Division continues to provide year round service to the citizens of Oakland County. In 1986, we experienced 28% increase in complaints, a 25% increase in drownings, and a 22% increase in citations issued over the 1985 statistics. All of this activity was completed within budget.

In February of 1986, we experienced a physical move to the lower level of the Animal Control Building in Auburn Hills. This provided close access to all of our equipment that is stored in the pole barn. The new facility has a training room which is utilized not only for department in-service training programs, but for Boater Safety and Snowmobile Safety Classes.

The department purchased two 4-wheel drive ORV's for patrol and emergency use. Equipped with trailer hitches, these machines have also been invaluable in maneuvering boats in the pole barn. These have also been instrumental in recovering stolen property, assisting dive operations, and searching for missing children.

Several new forms were designed in 1986: log sheets, CLEMIS SCUBA Supplemental, breathalyzer forms for watercraft, and

## 1986 PROTECTIVE SERVICES STATISTICS

### Patrol

Traffic Citations	28,256
Complaints	123,949

### Accidents

Property Damage	6,295
Personal Injury	2,100
Fatal	34

O.U.I.L. Arrests	417
------------------	-----

### Traffic Safety Education

Number of Programs	26
Number of Persons	1,460

### Abandoned Auto

Impoundments	2,542
--------------	-------

### Marine Safety

Drowning Reports	10
Complaint Reports	143
Accidents	51
Larceny Reports	85
Found Property Reports	56
Miscellaneous Reports	73
Meetings, Lectures, Etc.	32
Patrol Hours	3,162.5
Contacts	10,726
Warnings	1,622
Ticket/Violations	1,058
Livery Inspection of Boats/No. Insp.	1,072
Boating Safety Students Certified	1,658
Instructor Hours	371
Search & Rescue Hours	405.25
Maintenance of Equipment Hours	1,850.75
Training Hours	1,640

## 1986 TRAFFIC STATISTICS

### Accidents for 1986

		<u>Fatalities</u>
January	767	5
February	799	0
March	619	3
April	557	3
May	740	3
June	706	3
July	760	3
August	760	5
September	738	3
October	863	3
November	817	0
December	<u>936</u>	<u>5</u>
TOTAL	8,962	36

### Impounds for 1986

		<u>Acted On For Disposal</u>
January	210	95
February	224	126
March	228	140
April	189	130
May	166	175
June	230	149
July	206	162
August	246	164
September	237	193
October	182	172
November	205	109
December	<u>219</u>	<u>142</u>
TOTAL	2,542	1,757

### Citations for 1986

January	1,965	
February	1,616	
March	2,062	
April	2,073	
May	2,128	
June	1,825	
July	2,942	
August	2,637	
September	2,718	
October	2,635	
November	2,572	
December	<u>2,340</u>	
TOTAL	26,513	(Rochester Hills Not Included)

TECHNICAL SERVICES

DIVISION

Directed by:

LEWIS M. DOYLE

CAPTAIN

Captain Lewis M. Doyle has 21 years of service with the Oakland County Sheriff's Department. Prior to his employment with the County, he worked 4 years at the Orchard Lake Police Department.

He has a Bachelor of Science Degree from Michigan State University. He also is a charter member of the American Society of Crime Lab Directors.

He was hired on August 16, 1965 as a Deputy. On January 14, 1967 he was promoted to the rank of Chief - Identification Technician.

He was promoted to Lieutenant on January 1, 1977 which was reclassified to Captain on May 8, 1978. He has served as Captain of Technical Services since that date.

## TECHNICAL SERVICES

Technical Services is the support arm of the Sheriff's Department. In that role, Technical Support provides for the overall communication of the Department including receiving calls, dispatching patrol vehicles and coordinating the activities of those vehicles through communications.

The Records Bureau is responsible for the maintenance of all inmate records, complaints, accident reports, gun registrations and other records required by law or essential to the efficient operation of the police force.

The Operations Unit encompasses a variety of responsibility including:

- (a) The Crime Lab which is responsible for the securement, protection and analysis of evidence at and from crime scenes;
- (b) The Polygraph Unit which is employed to determine the truth of accused individual alleged victims and job applicants, thus greatly reducing investigation time and expense.

## CRIME LABORATORY

The Crime Detection Laboratory of the Oakland County Sheriff's Department, provides professional forensic analyses of physical evidence on a twenty-four (24) hour, seven (7) days a week basis. The laboratory, a Division of Technical Services, operates a mobile crime laboratory vehicle, which responds to all major crime scenes, civil disorders, drownings, and processes the same for any physical evidence unintentionally left behind.

Some of the various functions that are routinely performed by the professional staff of the Crime Laboratory include: forensic crime scene photography, fingerprints, latent fingerprints, firearms, toolmarks, physical matches, paint analysis, composites, explosive devices, bomb threats/de-arming, narcotic and dangerous drug determinations, alcohol, and gunshot residue.

This unit is intended primarily to be an agency specializing in physical evidence as an aid to the various divisions of the Sheriff's Department, as well as any other County police departments or agency requiring such aid. It is also a source of aid to departments other than those within the County and provide expert courtroom testimony in cases where necessary. A list of the departments and agencies assisted during the year of 1986, are as listed in the following report.

During the year of 1987, the Crime Laboratory will be utilizing the use of a new procedure for processing evidence for latent fingerprints which is a new Laser. The Michigan State Police is the only department in the state with this new procedure as of the present time. We anticipate an increase in our assists to outside agencies with this new procedure.



## 1986 CRIME LAB REPORT

	<u>YEAR TO DATE</u>
TOTAL CRIME SCENE INVESTIGATIONS	528
ASSISTS TO OUTSIDE DEPARTMENTS	639
TOTAL EXAMINATIONS	38,874
TOTAL IDENTIFICATIONS	1,082
<u>SECTIONAL BREAKDOWNS:</u>	
Latent Print Examinations	26,696
Latent Print Identifications	66
Unknown Dead Identified	10
Suspects Identified	86
<u>FIREARMS, TOOLMARKS AND SERIAL NUMBERS:</u>	
Firearm Examinations	209
Firearm Identifications	107
Toolmark Examinations	18
Toolmark Identifications	2
Serial Number Examinations	13
Serial Number Identifications	13
<u>BOMBS AND EXPLOSIVES:</u>	
Explosive Disposal	3
Bomb Scenes	9
Devices	11
Fake Devices	1
Bomb Threats	0
<u>PHOTOGRAPHS TAKEN AND PRINTED:</u>	
Black and White	3,580
Color	1,546
Printed	1,397
Monies Received For Photographs	\$6,088
<u>DRUGS:</u>	
Examinations	5,098
Identifications	582
<u>PAINT ANALYSIS:</u>	
Examinations	123
Identifications	10

	<u>YEAR TO DATE</u>
<b><u>PHYSICAL MATCH:</u></b>	
Examinations	53
Identifications	21
<b><u>ATOMIC ABSORPTION:</u></b>	
Examinations	4,654
Identifications	166
<b><u>COMPOSITES:</u></b>	
Identi-Kit	80
<b><u>MISCELLANEOUS:</u></b>	
Examinations	98
Identifications	11

## PROPERTY ROOM

The Oakland County Sheriff's Department Property Officer, receives all property submitted by the members of the Oakland County Sheriff's Department. This includes evidence, evidence for the Crime Laboratory and also found property.

The Property Room must be a safe and secure area and must provide a proper system for maintaining a "Chain of Evidence" on each piece of property that is submitted.

The Property Room officer has the responsibility of physically storing the property and maintaining a strict record keeping system of the property. Answerable not only to the Sheriff's Department and the Court's, but also directly to the Board of Auditors.

Other functions consist of destroying property when authorized and submitting property for the annual auction.

1986 EVIDENCE/PROPERTY REPORT

	<u>YEAR TO DATE</u>
Evidence Received	3,027
Recovered Goods	355
Found Property	585
Safekeeping	28
Property Tags Issued	1,605
Items Destroyed	595
Items Returned to Owner	551
Other	518

## POLYGRAPH UNIT

The Polygraph Unit of the Oakland County Sheriff's Department, provides a very necessary and vital service. This service is available seven (7) days a week. However, since there is only one examiner, the office is open daily, Monday through Friday, with the examiner being on call for emergency type situations, such as Homicide Investigations, Violations of the Criminal Sexual Conduct Code, Kidnappings, etc.

There were approximately thirty-four (34) law enforcement agencies which took advantage of this very important service during the year 1986. Included in this, on a regular basis is: Law Enforcement Investigators, Sheriff's, Chiefs of Police, Prosecutors, Judges, Defense Attorneys, Fire Investigators and Fire Chiefs, State and Local Social Services Personnel, various State and Federal Investigating Agencies, Correctional Departments and other police and private polygraph examiners. On an occasional basis, we service elected public officials, research groups, college educators, doctors and the general public, also, research and public relations.

The polygraph saves taxpayers thousands of dollars yearly, by eliminating suspects and focusing the investigation in the right direction.

The courts use this service extensively to solve some very sensitive and complex issues, such as in the case of a defendant who despite overwhelming evidence, continues to maintain his innocence. Dollars are saved by cutting down use of witnesses, court time, investigator man hours, prosecutor's time, etc.

## 1986 POLYGRAPH REPORT

<u>POLYGRAPH EXAMINATIONS CONDUCTED:</u>	<u>YEAR TO DATE</u>
Murder/Suspect (Homicide)	15
Arson	36
Criminal Sexual Conduct (1-2-3-4 Degree)	59
Assaults	45
Breaking and Enterings	35
Grand Larceny	44
Miscellaneous Felonies	107
Miscellaneous Misdemeanors	0
Robbery Armed and Unarmed	29
TOTAL	370
 <u>PERSONS EXAMINED:</u>	
Male	252
Female	65
Male Juvenile	42
Female Juvenile	11
TOTAL	370
 <u>EXAMINERS OPINION:</u>	
Truthful	148
Deceptive	149
Indefinite	7
Refused by Examiner	3
Other or Incomplete	63
TOTAL	370
 <u>ADMISSIONS:</u>	
Confessions	43
Other Admissions	65
TOTAL	108
 <u>ORIGINALS-SUPPLEMENTS-CANCELLATIONS:</u>	
Originals	292
Supplements	78
Cancellations or Refused	167
Court Orders	2
Re-examinations	8
TOTAL MAN HOURS	1,484

## GUN REGISTRATION

The primary function of the Gun Registration Division, is the issuance of firearms purchase permits, carrying concealed weapons applications and explosive permits. The service is available to all residents of Oakland County with the exception of those residing within an incorporated City or Village.

Prior to issuing a permit, a criminal record check is made to determine eligibility of the applicant. Upon receipt of the record clearance a permit is issued, which upon completion, must be returned to the office, subject is then fingerprinted and the firearm is registered.

The Concealed Weapon Permit application is submitted to the Gun Board for approval and a copy is retained in our files for a period of three (3) years. Procedure is the same for all renewal permits.

A daily log of all permits issued is maintained. A cross index file is also kept, namely a name card bearing applicant's name and address and a numerical file bearing the serial number of the firearm. Guns brought into the state by new residents, must be LEIN checked for prior registration or ownership. If a stolen report is indicated, the weapon is confiscated, an investigation is conducted and the gun is subsequently returned to the proper authorities.



During the course of a normal work day, numerous phone calls are received from the general public requesting information regarding procedures for obtaining the above mentioned permits. Requests are also received by mail for applications to be sent to the residence.

Ordering supplies from the County and State Departments (print cards, applications, etc.), is also done periodically.

Fingerprints are also taken in this division for the purpose of security checks for security guards, bar examinations, adoptions and also immigration purposes. Fingerprints are also taken for all Concealed Weapon Permit applications. These are then sent to Lansing for record clearances which are then sent with the application to the Gun Board.

#### 1986 GUN REGISTRATION

LEIN CHECKS	264
GUNS REGISTERED	3,383
FINGERPRINTS TAKEN	3,214
CONCEALED WEAPON PERMITS PROCESSED	1,222
CONCEALED WEAPON PERMITS ISSUED	3,593
PURCHASE PERMITS ISSUED	4,522
CRIMINAL RECORD CHECKS	3,593
PHONE CALLS	4,800

## COMMUNICATIONS

Another support unit of Technical Services is the Communications Division. Within this division are the phones, dispatch center and LEIN, (Law Enforcement Information Network).

Most of the information reaching a police department from the public passes through the public telephone system. The majority of cases involve requests for assistance, a request for information or an offer of information to the department. In addition, calls for members of a department other than the complaint operator, may be routed to the proper person. A request for assistance from a citizen may require immediate action, as when the caller reports a crime in progress or an injured person. Many calls from citizens are clearly of an emergency nature. In such cases, the complaint operator conveys the necessary information to the radio dispatcher. (Often, the complaint operator and the radio dispatcher are the same person, eliminating this step in the process). The communications agent, using the two-way radio system, will then assign the appropriate personnel, such as a patrol unit to respond.

Some calls to a department are not of any emergency nature, reducing the need for priority handling. When the Communications Agent receives the information, the agent may for instance,

decide to assign the call to a patrol unit which is currently unavailable. Thus, the message waits until the unit has returned to service. Examples of requests in this category are the complaint about a neighbor's dog or the report of an apparently abandoned automobile.

Most complaint calls are not clearly in either the emergency or non-emergency category, however. The agent must avoid the assumption that a complaint is not urgent, for the cost of an error in judgment may be high. The agent must, therefore, treat all such doubtful calls as if they were urgent, representing true emergencies. Every experienced communication agent knows of instances in which a routine request was found to be a serious emergency by the investigating officer. A complaint about a noisy party or quarreling neighbors may be a situation bordering on or erupting into violence. A loose stray dog may have bitten a child, a report of a ransacked house may uncover the burglars still in the building and a man staggering or falling in the street may be having a heart attack. Each such call for aid may, of course, turn out to be a routine matter that was not particularly urgent. A small percentage, however, require immediate response. Since they cannot be predicted, all such doubtful requests must be handled without delay. In 1975 we became the dispatch center for MEPS (Michigan Emergency Public Safety (Radio) System). This is a statewide

radio network that insures direct communication between the patrol vehicles on the road and twenty-four (24) hour base stations in an emergency situation. Presently, we have radio transmitting and receiving capabilities with numerous stations within Oakland County and answer the phones and dispatch for several departments after normal working hours.

The police officer cannot function effectively without information. Much of the data he needs is maintained in LEIN or other interfaced computer systems. One type of information we are talking about would be vehicle registration information. This could be registration by vin number, partial vin number, license number or partial license number and would be on any type of motor driven vehicle. This file also contains stolen or wanted vehicle data, impounded vehicle data, complete title or insurance information. Another type of information is drivers license information and driving record information. We also have access to criminal records from the State of Michigan or the entire country via the LEIN. Another valuable asset of the LEIN is instantaneous answers to a query from the warrant/wanted data file. LEIN users have the capability of communicating with any police department in Michigan by the direct on-line or real line communication. Any of Michigan's two hundred (200) police agencies may contact each other by

any of the following ways: from one point to another, from one point to a multiple point, from one point to an area or from one point to the entire state. LEIN users have direct contact with other agencies such as FBI, the Drug Enforcement Administration, the Internal Revenue Service, all of Detroit, and over fifty precincts or specialized bureaus of Detroit Police Departments. Included also are the Michigan Sheriffs' Association, the Provost Marshall, Selfridge Field, Jackson Prison, the Department of Corrections in Lansing, Michigan State, Wayne State and Eastern and Western Universities and any police agency in the United States. LEIN users have direct on-line communication with Indiana, Illinois, Kentucky, Ohio, Wisconsin, Iowa and Missouri. The LEIN provides its users with the ability to enter all stolen property, as long as it is serialized, into state and national files (NCIC, National Crime Information Center) and to enter all recovered property into its files as long as there is a serial number available. Through LEIN and NCIC, the police agency can provide public services, one such service provided by LEIN is the participation in the School Closing notification procedures.

The E-9-1-1 System will be implemented in Oakland County in April of 1988. E-9-1-1 is a universal emergency number service. 9-1-1 service is a telephone service whereby a Public Safety answering point, designated by the customer, may receive calls dialed to the telephone number 9-1-1. This service includes

special connecting arrangements and equipment needed to answer and dispatch emergency calls originated by persons within the serving area who dial 9-1-1.

1986 COMMUNICATIONS SECTION REPORT

				<u>YEAR TO</u>
				<u>DATE</u>
NUMBER OF COMPLAINTS ISSUED FOR YEAR				123,967
January	7,243	July	12,389	
February	8,206	August	11,958	
March	9,911	September	11,006	
April	10,034	October	10,904	
May	11,021	November	9,629	
June	11,639	December	10,038	
NUMBER OF PHONE CALLS FOR YEAR				337,206
January	37,292	July	32,585	
February	22,426	August	27,250	
March	24,353	September	27,135	
April	25,242	October	26,610	
May	26,315	November	30,120	
June	31,260	December	26,618	
R.E.D.D.I. LINE CALLS FOR YEAR				224
January	22	July	24	
February	9	August	20	
March	24	September	19	
April	18	October	17	
May	19	November	14	
June	21	December	47	
AVERAGE CALLS PER MONTH		28,610		
AVERAGE CALLS PER WEEK		7,522		
AVERAGE CALLS PER DAY		1,051		

## RECORDS BUREAU

Reports received by this department include: Complaints/Recoveries, Arrest/Dispositions, Complaint Comparison, Arrest Comparison, Manpower by Badge, Manpower Statistics, Property Crimes, values stolen and recovered, Event Occurrence, by class and location, Uniform Crime Report, and various other reports too numerous to mention. These items are then entered into the CLEMIS system.

"CLEMIS" (Court and Law Enforcement Management Information System), is a part of Data Processing, generates reports covering all phases of law enforcement; total crime, man hours expended, arrested persons, value of property stolen and recovered, day and hours when crimes are committed and police vehicle usage. "CLEMIS" allows the Sheriff more efficient reporting and expediency of information needed to make optimum use of department resources.

Although it is time consuming to prepare written complaints, it is vital to this department that all criminal complaints be reported. Information gathered from these reports are forwarded to the Uniform Crime Reporting Unit in Lansing who subsequently report to the Federal Bureau of Investigation in Washington, D.C. Their primary concern is Part I crimes: Murder, Rape, Robbery, Assault, Burglary, Larceny, Arson and Motor

Vehicle Theft. Reports are then compiled by them which reflects either an increase or decrease in crime throughout the nation.

This department currently utilizes the Incident Report, Person Report, Property Report, and the Activity Log. Information from these reports are entered into the Data Processing System. Accuracy of reporting is extremely important for: geographic area, time of occurrence, complainants name and address, and correct crime classifications.

Inmates files numbering from 1 to 132,000 are processed upon release from the Oakland County Jail. The files consist of booking information, court data, bond receipts, clothing receipts and money sheets. A name card file is kept for cross reference with date of birth and inmate number. After the inmate files are processed the inmate files from 3,000 and up, are Microfilmed and filed in a secure storage area. The microfilm is kept on file unless otherwise purged by the Court. This makes it available for us to assist other departments in obtaining information on suspects, such as pictures or fingerprints. The Record Bureau is responsible for putting the ATR forms together and making sure they are correct and forwarded to Lansing.



1986 RECORD BUREAU REPORT

	<u>YEAR TO DATE</u>
<u>CRIMINAL RECORDS:</u>	
Folders Processed	16,139
Micro-Fiche Pages Printed	175,290
Expungement of Records	56
<u>C.L.E.M.I.S.</u>	
Complaint Copies	1,850
Money Received	\$3,698.50
Total Complaints (Department)	33,520
<u>MISCELLANEOUS:</u>	
Requests For Statistics	60
Visa and Licensing Clearances	118
3M Copier Printed Pages	176,565
Minolta Copier Printed Pages	4,568
Subpoenas Answered	137

REPORT DATE/TIME 01/15/87 21.30  
 PERIOD 12/01/86 THRU 12/31/86

O.C. SHERIFF  
 MONTHLY SUMMARY OF OFFENSES

ORI MI6316300

*-----	DESCRIPTION	-----*	CURRENT PERIOD	LAST YR SAME PD	CURRENT Y-T-D	LAST Y-T-D	YEAR TO DATE PERCENT CHANGE	CUR ADULT	PD JUVENILE	ARRESTS ADULT	Y-T-D JUVENILE	ARRESTS ADULT	JUVENILE
CRIMINAL HOMICIDE	0	0	1	4	75.0-	1	0	8	0				
CRIM. SEX. COND. I & III	5	2	52	53	1.9-	2	1	19	7				
ROBBERY	10	5	66	76	13.2-	3	1	17	1				
ASSAULT (AGGRAVATED)	10	17	282	238	18.5	4	0	63	7				
BURGLARY	148	162	1777	1753	1.4	17	6	121	35				
LARCENY	336	301	4607	3999	15.2	26	6	280	101				
MOTOR VEHICLE THEFT	47	60	702	634	10.7	4	0	28	20				
ARSON	5	9	150	143	4.9	0	0	11	3				
TOTAL PART I INCIDENTS	561	556	7637	6900	10.7	57	14	547	174				
CRIM. SEX. COND. II & IV	1	2	21	16	31.3	0	0	7	1				
ASSAULT (NON-AGGRAVATED)	90	68	1089	968	12.5	7	0	79	2				
FORGERY/COUNTERFEITING	2	1	48	48	0.0	0	0	10	2				
FRAUD	66	85	691	842	17.9-	3	0	44	0				
EMBEZZLEMENT	1	1	20	19	5.3	0	0	5	0				
STOLEN PROPERTY	2	1	39	23	69.6	4	3	49	13				
VANDALISM	253	199	3320	2931	13.3	4	2	60	24				
WEAPONS	1	4	42	55	23.6-	1	0	18	3				
PROSTITUTION & COMM VICE	0	0	0	1	100.0-	0	0	0	0				
SEX OFFENSES	6	4	93	71	31.0	0	0	10	1				
NARCOTIC DRUG LAWS	8	17	87	99	12.1-	2	0	24	7				
GAMBLING	1	0	2	2	0.0	0	0	0	0				
FAMILY AND CHILDREN	8	3	51	59	13.6-	0	0	3	0				
OPER UNDER THE INFLUENCE	60	90	820	1236	33.7-	61	1	817	4				
LIQUOR LAWS	12	1	115	85	35.3	18	3	138	7				
DISORDERLY CONDUCT	20	16	245	204	20.1	5	0	85	4				
VAGRANCY	1	0	5	6	16.7-	0	0	1	0				
LOCAL, STATE, FED. OFFENSES	83	81	1332	1364	2.3-	31	2	471	64				
TOTAL PART II INCIDENTS	615	573	8020	8029	0.1-	136	11	1821	132				
TOTAL PART I AND II	1176	1129	15657	14929	4.9	193	25	2368	306				
RUNAWAY/RECOVERED RUNAWAY	21	16	333	393	15.3-	0	0	1	3				
ESCAPE CUSTODY/IRUANCY	0	1	9	2	350.0	0	0	1	6				
ALL OTHER JUV COMPLAINTS	10	12	190	248	23.4-	0	1	2	10				
WARRANTS	63	44	753	650	15.8	66	0	778	0				
TRAFFIC ACC/PROP DAMAGE	702	886	6891	6182	11.5	1	0	1	0				
TRAFFIC ACC/PERS INJURY	223	221	2116	2092	1.1	0	0	1	0				
TRAFFIC ACC/FATALITIES	5	4	29	39	25.6-	0	0	0	0				
WATERCRAFT ACC/PROP DAMAG	0	0	24	17	41.2	0	0	0	0				
WATERCRAFT ACC/PERS INJUR	0	0	16	11	45.5	0	0	0	0				
WATERCRAFT ACC/FATALITIES	0	0	1	1	0.0	0	0	0	0				
WATERCRAFT COMPLAINTS	0	2	107	135	20.7-	0	0	0	0				
ALL OTHER VEH COMPLAINTS	137	130	1820	1561	16.6	9	0	131	24				
SICK / INJURY COMPLAINTS	40	82	693	923	24.9-	0	0	0	0				
MISC PART III COMPLAINTS	315	357	4728	5098	7.2-	1	0	2	0				
TOTAL PART III INCIDENTS	1516	1755	17710	17349	2.1	77	1	917	43				
TOTAL PART V FIRE INCIDS	13	17	151	131	15.3	0	0	3	0				
TOTAL PART VI INCIDENTS	0	0	2	0	+	0	0	0	0				
***** DEPARTMENT TOTALS	2705	2901	33520	32409	3.4	270	26	3288	349				

\*\* LAW ENFORCEMENT USE ONLY \*\*

MI6316300

LPS-065

72

REPORT DATE/TIME 01 15/87 21.30  
 PERIOD 12/01/86 THRU 12/31/86

ADDISON TWP  
 MONTHLY SUMMARY OF OFFENSES

ORI MI6316300

PAGE 1  
 REPORT LPS-065

*----- DESCRIPTION -----*	CURRENT PERIOD	LAST YR SAME PD	CURRENT Y-T-D	LAST Y-T-D	YEAR TO DATE PERCENT CHANGE	CUR PD ARRESTS		Y-T-D ARRESTS	
						ADULT	JUVENILE	ADULT	JUVENILE
CRIMINAL HOMICIDE	0	0	0	1	100.0-	0	0	0	0
CRIM. SEX. COND. I & III	0	0	1	0	+	0	0	0	0
ASSAULT (AGGRAVATED)	0	0	5	7	28.6-	0	0	1	0
BURGLARY	1	1	28	40	30.0-	0	0	2	2
LARCENY	3	3	46	53	13.2-	0	0	0	0
MOTOR VEHICLE THEFT	0	2	6	9	33.3-	0	0	0	0
ARSON	1	1	1	6	83.3-	0	0	0	0
TOTAL PART I INCIDENTS	5	7	87	116	25.0-	0	0	3	2
ASSAULT (NON-AGGRAVATED)	1	1	23	19	21.1	0	0	1	0
FORGERY/COUNTERFEITING	0	0	1	1	0.0	0	0	0	1
FRAUD	1	1	6	4	50.0	0	0	1	0
STOLEN PROPERTY	0	1	0	2	100.0-	0	0	2	3
VANDALISM	5	3	51	61	16.4-	0	0	0	0
SEX OFFENSES	0	0	1	1	0.0	0	0	0	0
NARCOTIC DRUG LAWS	0	0	1	2	50.0-	0	0	1	0
FAMILY AND CHILDREN	0	0	3	1	200.0	0	0	0	0
OPER UNDER THE INFLUENCE	0	1	12	12	0.0	0	0	11	0
LIQUOR LAWS	1	0	6	0	+	4	0	11	0
DISORDERLY CONDUCT	1	0	4	3	33.3	0	0	1	0
LOCAL, STATE, FED. OFFENSES	2	4	37	36	2.8	0	0	10	0
TOTAL PART II INCIDENTS	11	11	145	142	2.1	4	0	38	4
TOTAL PART I AND II	16	18	232	258	10.1-	4	0	41	6
RUNAWAY/RECOVERED RUNAWAY	0	0	9	7	28.6	0	0	0	0
ALL OTHER JUV COMPLAINTS	0	0	2	3	33.3-	0	0	0	0
WARRANTS	1	0	15	6	150.0	1	0	16	0
TRAFFIC ACC/PROP DAMAGE	14	9	136	111	22.5	0	0	0	0
TRAFFIC ACC/PERS INJURY	2	5	40	41	2.4-	0	0	0	0
TRAFFIC ACC/FATALITIES	0	0	0	1	100.0-	0	0	0	0
WATERCRAFT ACC/PROP DAMAG	0	0	0	2	100.0-	0	0	0	0
WATERCRAFT ACC/PERS INJUR	0	0	2	1	100.0	0	0	0	0
WATERCRAFT COMPLAINTS	0	0	10	4	150.0	0	0	0	0
ALL OTHER VEH COMPLAINTS	4	2	44	31	41.9	0	0	1	1
SICK / INJURY COMPLAINTS	0	1	11	27	59.3-	0	0	0	0
MISC PART III COMPLAINTS	6	7	107	115	7.0-	0	0	0	0
TOTAL PART III INCIDENTS	27	24	376	349	7.7	1	0	17	1
TOTAL PART V FIRE INCIDS	0	0	1	4	75.0-	0	0	0	0
***** DEPARTMENT TOTALS	43	42	509	611	0.3-	5	0	58	7

\*\* LAW ENFORCEMENT USE ONLY \*\*

MI6316300

LPS-065

PAGE 1

73

REPORT DATE/TIME 01/15/87 21:30  
 PERIOD 12/01/86 THRU 12/31/86

AUBURN HILLS  
 MONTHLY SUMMARY OF OFFENSES

ORI MI6316300

PAGE 1  
 REPORT LPS-065

***** DESCRIPTION *****	CURRENT PERIOD	LAST YR SAME PD	CURRENT Y-T-D	LAST Y-T-D	YEAR TO DATE PERCENT CHANGE	CUR PD ADULT	ARRESTS JUVENILE	Y-T-D ADULT	ARRESTS JUVENILE
CRIMINAL HOMICIDE	0	0	1	0	+	0	0	1	0
CRIM. SEX. COND. I & III	0	0	1	0	+	0	0	1	0
ROBBERY	0	0	0	1	100.0-	0	0	0	0
ASSAULT (AGGRAVATED)	0	0	0	1	100.0-	0	0	0	0
BURGLARY	1	0	1	1	0.0	2	2	3	2
LARCENY	0	1	2	3	33.3-	0	0	0	0
ARSON	0	0	7	1	600.0	0	0	1	0
TOTAL PART I INCIDENTS	1	1	12	7	71.4	2	2	6	2
ASSAULT (NON-AGGRAVATED)	0	1	1	4	75.0-	0	0	0	0
FORGERY/COUNTERFEITING	0	0	0	1	100.0-	0	0	0	0
FRAUD	0	0	2	0	+	0	0	0	0
STOLEN PROPERTY	0	0	4	1	300.0	1	0	6	0
VANDALISM	1	3	4	5	20.0-	0	0	0	0
WEAPONS	0	1	2	2	0.0	0	0	1	0
NARCOTIC DRUG LAWS	0	3	3	4	25.0-	0	0	2	0
OPER UNDER THE INFLUENCE	7	12	63	107	41.1-	7	0	63	0
LIQUOR LAWS	0	0	0	1	100.0-	0	0	0	0
DISORDERLY CONDUCT	0	0	1	1	0.0	0	0	1	0
LOCAL, STATE, FED. OFFENSES	0	1	6	3	100.0	0	0	2	1
TOTAL PART II INCIDENTS	8	21	86	129	33.3-	8	0	75	1
TOTAL PART I AND II	9	22	98	136	27.9-	10	2	81	3
RUNAWAY/RECOVERED RUNAWAY	0	0	1	0	+	0	0	0	0
ESCAPE CUSTODY/TRUANCY	0	0	0	1	100.0-	0	0	0	0
ALL OTHER JUV COMPLAINTS	0	0	0	1	100.0-	0	0	0	0
WARRANTS	7	3	47	46	2.2	7	0	52	0
TRAFFIC ACC/PROP DAMAGE	2	2	15	26	42.3-	0	0	0	0
TRAFFIC ACC/PERS INJURY	1	2	6	7	14.3-	0	0	0	0
WATERCRAFT COMPLAINTS	0	0	0	2	100.0-	0	0	0	0
ALL OTHER VEH COMPLAINTS	1	3	9	13	30.8-	0	0	0	0
SICK / INJURY COMPLAINTS	0	0	0	2	100.0-	0	0	0	0
MISC PART III COMPLAINTS	4	7	55	69	20.3-	0	0	0	0
TOTAL PART III INCIDENTS	15	17	133	167	20.4-	7	0	52	0
***** DEPARTMENT TOTALS	24	39	231	303	23.8-	17	2	133	3

\*\* LAW ENFORCEMENT USE ONLY \*\*

MI6316300 LPS-065

PAGE 1

74

REPORT DATE/TIME 01 15/87 21.30  
 PERIOD 12/01/86 THRU 12/31/86

BLOOMFIELD TWP  
 MONTHLY SUMMARY OF OFFENSES

ORI MI63-6300

PAGE 1  
 REPORT LPS-065

***** DESCRIPTION *****	CURRENT PERIOD	LAST YR SAME PD	CURRENT Y-T-D	LAST Y-T-D	YEAR TO DATE PERCENT CHANGE	CUR ADULT	PD	ARRESTS		Y-T-D ARRESTS	
								JUVENILE	ADULT	JUVENILE	JUVENILE
LARCENY	0	0	0	2	100.0-	0	0	0	0	0	0
ARSON	0	0	0	1	100.0-	0	0	0	0	0	0
TOTAL PART I INCIDENTS	0	0	0	3	100.0-	0	0	0	0	0	0
ASSAULT (NON-AGGRAVATED)	0	0	0	0	+	0	0	0	1	0	0
WEAPONS	0	0	1	0	+	0	0	0	0	0	0
OPER UNDER THE INFLUENCE	1	9	24	40	40.0-	1	0	0	24	0	0
LOCAL, STATE, FED. OFFENSES	0	0	0	1	100.0-	0	0	0	0	0	0
TOTAL PART II INCIDENTS	1	9	25	41	39.0-	1	0	0	25	0	0
TOTAL PART I AND II	1	9	25	44	43.2-	1	0	0	25	0	0
WARRANTS	0	0	5	2	150.0	1	0	0	6	0	0
TRAFFIC ACC/PROP DAMAGE	0	0	6	5	20.0	0	0	0	0	0	0
TRAFFIC ACC/PERS INJURY	0	0	1	3	66.7-	0	0	0	0	0	0
ALL OTHER VEH COMPLAINTS	0	0	3	0	+	0	0	0	2	0	0
SICK / INJURY COMPLAINTS	0	0	0	1	100.0-	0	0	0	0	0	0
MISC PART III COMPLAINTS	2	0	21	17	23.5	0	0	0	0	0	0
TOTAL PART III INCIDENTS	2	0	36	28	28.6	1	0	0	8	0	0
TOTAL PART VI INCIDENTS	0	0	2	0	+	0	0	0	0	0	0
***** DEPARTMENT TOTALS	3	9	63	72	12.5-	2	0	0	33	0	0

\*\* LAW ENFORCEMENT USE ONLY \*\*

MI6316300 LPS-065

PAGE 1

75

REPORT DATE/TIME 01/15/87 21.30  
 PERIOD 12/01/86 THRU 12/31/86

BRANDON TWP  
 MONTHLY SUMMARY OF OFFENSES

ORI MI6316300

PAGE 1  
 REPORT LPS-065

***** DESCRIPTION *****	CURRENT PERIOD	LAST YR SAME PD	CURRENT Y-T-D	LAST Y-T-D	YEAR TO DATE PERCENT CHANGE	CUR ADULT	PD	ARRESTS JUVENILE	Y-T-D ADULT	ARRESTS JUVENILE
CRIMINAL HOMICIDE	0	0	0	1	100.0-	0		0	0	0
CRIM. SEX. COND. I & III	1	0	2	1	100.0	0		1	0	3
ROBBERY	0	0	2	4	50.0-	0		0	2	0
ASSAULT (AGGRAVATED)	0	1	16	13	23.1	0		0	4	1
BURGLARY	3	11	101	136	25.7-	0		0	4	1
LARCENY	11	10	181	191	5.2-	0		0	6	1
MOTOR VEHICLE THEFT	3	4	30	31	3.2-	1		0	2	0
ARSON	0	0	6	6	0.0	0		0	0	0
<b>TOTAL PART I INCIDENTS</b>	<b>18</b>	<b>26</b>	<b>338</b>	<b>383</b>	<b>11.7-</b>	<b>1</b>		<b>1</b>	<b>18</b>	<b>6</b>
CRIM. SEX. COND. II & IV	0	1	2	4	50.0-	0		0	1	0
ASSAULT (NON-AGGRAVATED)	4	4	64	73	12.3-	0		0	2	0
FORGERY/COUNTERFEITING	0	0	0	3	100.0-	0		0	1	0
FRAUD	1	1	32	34	5.9-	0		0	2	0
STOLEN PROPERTY	0	0	0	3	100.0-	0		0	0	0
VANDALISM	15	15	167	199	16.1-	0		2	3	3
WEAPONS	0	0	2	5	60.0-	0		0	3	0
SEX OFFENSES	0	0	4	2	100.0	0		0	1	0
NARCOTIC DRUG LAWS	0	0	5	6	16.7-	0		0	2	1
FAMILY AND CHILDREN	1	0	6	0	+	0		0	1	0
OPER UNDER THE INFLUENCE	0	0	24	43	44.2-	0		0	24	0
LIQUOR LAWS	0	0	2	5	60.0-	0		0	2	0
DISORDERLY CONDUCT	1	2	7	6	16.7	1		0	3	0
LOCAL, STATE, FED. OFFENSES	5	5	75	85	11.8-	0		0	7	2
<b>TOTAL PART II INCIDENTS</b>	<b>27</b>	<b>28</b>	<b>390</b>	<b>468</b>	<b>16.7-</b>	<b>1</b>		<b>2</b>	<b>52</b>	<b>6</b>
<b>TOTAL PART I AND II</b>	<b>45</b>	<b>54</b>	<b>728</b>	<b>851</b>	<b>14.5-</b>	<b>2</b>		<b>3</b>	<b>70</b>	<b>12</b>
RUNAWAY/RECOVERED RUNAWAY	0	1	18	30	40.0-	0		0	0	0
ALL OTHER JUV COMPLAINTS	1	0	11	20	45.0-	0		0	1	0
WARRANTS	0	5	34	28	21.4	0		0	38	0
TRAFFIC ACC/PROP DAMAGE	25	43	285	264	8.0	0		0	0	0
TRAFFIC ACC/PERS INJURY	13	10	87	70	24.3	0		0	0	0
TRAFFIC ACC/FATALITIES	1	1	4	4	0.0	0		0	0	0
WATERCRAFT ACC/PROP DAMAG	0	0	1	1	0.0	0		0	0	0
WATERCRAFT COMPLAINTS	0	0	3	1	200.0	0		0	0	0
ALL OTHER VEH COMPLAINTS	5	9	144	99	45.5	0		0	4	0
SICK / INJURY COMPLAINTS	0	4	26	45	42.2-	0		0	0	0
MISC PART III COMPLAINTS	16	18	270	255	5.9	0		0	0	0
<b>TOTAL PART III INCIDENTS</b>	<b>61</b>	<b>91</b>	<b>883</b>	<b>817</b>	<b>8.1</b>	<b>0</b>		<b>0</b>	<b>43</b>	<b>0</b>
<b>TOTAL PART V FIRE INCIDS</b>	<b>0</b>	<b>0</b>	<b>8</b>	<b>3</b>	<b>166.7</b>	<b>0</b>		<b>0</b>	<b>0</b>	<b>0</b>
<b>***** DEPARTMENT TOTALS</b>	<b>106</b>	<b>145</b>	<b>1619</b>	<b>1671</b>	<b>3.1-</b>	<b>2</b>		<b>3</b>	<b>113</b>	<b>12</b>

\*\* LAW ENFORCEMENT USE ONLY \*\*

MI6316300

LPS-065

PAGE 1

76

REPORT DATE/TIME 01/15/87 21.30  
 PERIOD 12/01/86 THRU 12/31/86

OUT CNTY  
 MONTHLY SUMMARY OF OFFENSES

ORI MI6316300

PAGE  
 REPORT LPS-065

***** DESCRIPTION *****	CURRENT PERIOD	LAST YR SAME PD	CURRENT Y-T-D	LAST Y-T-D	YEAR TO DATE PERCENT CHANGE	CUR PD ADULT	ARRESTS JUVENILE	Y-T-D ARRESTS	
								ADULT	JUVENILE
CRIM. SEX. COND. I & III	0	0	0	1	100.0-	0	0	0	0
ASSAULT (AGGRAVATED)	0	0	1	0	+	0	0	0	0
BURGLARY	0	0	0	0	+	0	0	2	0
LARCENY	0	0	1	1	0.0	0	0	0	0
MOTOR VEHICLE THEFT	0	0	0	0	+	2	0	2	0
ARSON	0	0	1	1	0.0	0	0	0	0
TOTAL PART I INCIDENTS	0	0	3	3	0.0	2	0	4	0
STOLEN PROPERTY	1	0	1	0	+	0	0	0	0
NARCOTIC DRUG LAWS	0	0	0	0	+	0	0	1	0
FAMILY AND CHILDREN	0	0	0	1	100.0-	0	0	1	0
OPER UNDER THE INFLUENCE	0	0	0	2	100.0-	0	0	0	0
LOCAL, STATE, FED. OFFENSES	0	0	0	1	100.0-	0	0	5	0
TOTAL PART II INCIDENTS	1	0	1	4	75.0-	0	0	7	0
TOTAL PART I AND II	1	0	4	7	42.9-	2	0	11	0
WARRANTS	2	5	47	34	38.2	3	0	46	0
TRAFFIC ACC/PROP DAMAGE	0	0	1	0	+	0	0	0	0
WATERCRAFT ACC/PROP DAMAG	0	0	1	0	+	0	0	0	0
ALL OTHER VEH COMPLAINTS	1	0	4	2	100.0	0	0	0	0
SICK / INJURY COMPLAINTS	0	0	1	0	+	0	0	0	0
MISC PART III COMPLAINTS	9	7	147	149	1.3-	0	0	0	0
TOTAL PART III INCIDENTS	12	12	201	185	8.6	3	0	46	0
***** DEPARTMENT TOTALS	13	12	205	192	6.8	5	0	57	0

\*\* LAW ENFORCEMENT USE ONLY \*\*

MI6316300

LPS-065

PAGE 1

77

REPORT DATE/TIME 01/15 87 21.30  
 PERIOD 12/01/86 THRU 12/31/86

COMMERCE TWP  
 MONTHLY SUMMARY OF OFFENSES

ORI MI6316300

PAGE 1  
 REPORT LPS-065

***** DESCRIPTION *****	CURRENT PERIOD	LAST YR SAME PD	CURRENT Y-T-D	LAST Y-T-D	YEAR TO DATE PERCENT CHANGE	CUR ADULT	PD	ARRESTS JUVENILE	Y-T-D ADULT	ARRESTS JUVENILE
CRIMINAL HOMICIDE	0	0	0	0	+	0	0	0	1	0
CRIM. SEX. COND. I & III	0	0	6	9	33.3-	0	0	0	0	1
ROBBERY	2	1	9	8	12.5	0	0	0	0	0
ASSAULT (AGGRAVATED)	0	1	34	30	13.3	1	0	0	7	1
BURGLARY	17	20	235	210	11.9	3	2	2	10	4
LARCENY	45	42	623	514	21.2	4	0	0	49	16
MOTOR VEHICLE THEFT	4	1	65	58	12.1	1	0	0	2	4
ARSON	1	4	11	13	15.4-	0	0	0	0	0
TOTAL PART I INCIDENTS	69	69	983	842	16.7	9	2	2	69	26
CRIM. SEX. COND. II & IV	0	0	6	2	200.0	0	0	0	2	0
ASSAULT (NON-AGGRAVATED)	10	8	122	97	25.8	0	0	0	5	0
FORGERY/COUNTERFEITING	0	0	4	6	33.3-	0	0	0	0	0
FRAUD	4	4	49	67	26.9-	0	0	0	1	0
EMBEZZLEMENT	0	0	6	5	20.0	0	0	0	0	0
STOLEN PROPERTY	0	0	4	3	33.3	0	0	0	5	1
VANDALISM	36	15	439	342	28.4	0	0	0	13	5
WEAPONS	0	1	7	6	16.7	0	0	0	2	0
PROSTITUTION & COMM VICE	0	0	0	1	100.0-	0	0	0	0	0
SEX OFFENSES	0	1	8	6	33.3	0	0	0	0	0
NARCOTIC DRUG LAWS	0	3	26	16	62.5	0	0	0	4	6
FAMILY AND CHILDREN	1	0	9	5	80.0	0	0	0	0	0
OPER UNDER THE INFLUENCE	4	10	61	121	49.6-	3	1	1	60	1
LIQUOR LAWS	2	1	16	12	33.3	1	0	0	9	0
DISORDERLY CONDUCT	0	2	27	24	12.5	0	0	0	7	0
VAGRANCY	0	0	2	0	+	0	0	0	0	0
LOCAL, STATE, FED. OFFENSES	18	14	202	175	15.4	1	0	0	64	20
TOTAL PART II INCIDENTS	75	59	988	888	11.3	5	1	1	172	33
TOTAL PART I AND II	144	128	1971	1730	13.9	14	3	3	241	59
RUNAWAY/RECOVERED RUNAWAY	5	1	55	40	37.5	0	0	0	0	0
ESCAPE CUSTODY/TRUANCY	0	0	2	0	+	0	0	0	0	2
ALL OTHER JUV COMPLAINTS	1	4	30	28	7.1	0	1	1	0	4
WARRANTS	14	5	116	67	73.1	14	0	0	123	0
TRAFFIC ACC/PROP DAMAGE	90	113	847	785	7.9	0	0	0	0	0
TRAFFIC ACC/PERS INJURY	29	30	252	256	1.6-	0	0	0	0	0
TRAFFIC ACC/FATALITIES	1	0	7	7	0.0	0	0	0	0	0
WATERCRAFT ACC/PROP DAMAG	0	0	5	0	+	0	0	0	0	0
WATERCRAFT ACC/PERS INJUR	0	0	2	1	100.0	0	0	0	0	0
WATERCRAFT COMPLAINTS	0	1	7	8	12.5-	0	0	0	0	0
ALL OTHER VEH COMPLAINTS	15	16	192	191	0.5	2	0	0	26	7
SICK / INJURY COMPLAINTS	6	8	92	94	2.1-	0	0	0	0	0
MISC PART III COMPLAINTS	38	35	510	575	11.3-	0	0	0	1	0
TOTAL PART III INCIDENTS	199	213	2117	2052	3.2	16	1	1	150	13
TOTAL PART V FIRE INCIDS	0	2	19	10	90.0	0	0	0	0	0
***** DEPARTMENT TOTALS	343	343	4107	3792	8.3	30	4	4	391	72

\*\* LAW ENFORCEMENT USE ONLY \*\*

MI6316300 LPS-065

PAGE 1

78



REPORT DATE/TIME 01/15/87 21.30  
 PERIOD 12/01/86 THRU 12/31/86

FARM TWP  
 MONTHLY SUMMARY OF OFFENSES

DRI MI6316300

PAGE 1  
 REPORT LPS-065

*----- DESCRIPTION -----*	CURRENT PERIOD	LAST YR SAME PD	CURRENT Y-T-D	LAST Y-T-D	YEAR TO DATE PERCENT CHANGE	CUR ADULT	PD JUVENILE	ARRESTS ADULT	Y-T-D ADULT	ARRESTS JUVENILE
ASSAULT (AGGRAVATED)	0	0	1	0	+	0	0	0	0	0
TOTAL PART I INCIDENTS	0	0	1	0	+	0	0	0	0	0
VANDALISM	0	0	1	0	+	0	0	0	0	0
OPER UNDER THE INFLUENCE	1	5	13	36	63.9-	1	0	13	13	0
TOTAL PART II INCIDENTS	1	5	14	36	61.1-	1	0	13	13	0
TOTAL PART I AND II	1	5	15	36	58.3-	1	0	13	13	0
WARRANTS	0	1	0	1	100.0-	0	0	1	1	0
TRAFFIC ACC/PERS INJURY	0	0	0	2	100.0-	0	0	0	0	0
ALL OTHER VEH COMPLAINTS	0	0	0	1	100.0-	0	0	0	0	0
MISC PART III COMPLAINTS	0	0	9	6	50.0	0	0	0	0	0
TOTAL PART III INCIDENTS	0	1	9	10	10.0-	0	0	1	1	0
***** DEPARTMENT TOTALS	1	6	24	46	47.8-	1	0	14	14	0

\*\* LAW ENFORCEMENT USE ONLY \*\*

MI6316300 LPS-065

PAGE 1

79

REPORT DATE/TIME 01/15/87 21.30  
 PERIOD 12/01/86 THRU 12/31/86

GROVELAND TWP  
 MONTHLY SUMMARY OF OFFENSES

ORI MI6316300

PAGE 1  
 REPORT LPS-065

***** DESCRIPTION *****	CURRENT PERIOD	LAST YR SAME PD	CURRENT Y-T-D	MONTHLY SUMMARY OF OFFENSES		CUR PD	ARRESTS		Y-T-D ARRESTS	
				LAST Y-T-D	YEAR TO DATE PERCENT CHANGE		ADULT	JUVENILE	ADULT	JUVENILE
ASSAULT (AGGRAVATED)	0	0	0	1	100.0-	0	0	0	0	0
BURGLARY	0	0	1	0	+	0	0	1	0	0
LARCENY	1	0	1	2	50.0-	0	0	0	0	0
MOTOR VEHICLE THEFT	0	0	1	1	0.0	0	0	0	0	0
TOTAL PART I INCIDENTS	1	0	3	4	25.0-	0	0	1	0	0
ASSAULT (NON-AGGRAVATED)	0	0	1	1	0.0	0	0	0	0	0
FORGERY/COUNTERFEITING	0	0	0	1	100.0-	0	0	0	0	0
VANDALISM	0	0	1	2	50.0-	0	0	0	0	0
FAMILY AND CHILDREN	0	0	1	0	+	0	0	0	0	0
OPER UNDER THE INFLUENCE	0	0	5	6	16.7-	0	0	5	0	0
LOCAL, STATE, FED. OFFENSES	0	0	1	1	0.0	0	0	0	0	0
TOTAL PART II INCIDENTS	0	0	9	11	18.2-	0	0	5	0	0
TOTAL PART I AND II	1	0	12	15	20.0-	0	0	6	0	0
ALL OTHER JUV COMPLAINTS	0	0	0	1	100.0-	0	0	0	0	0
WARRANTS	0	0	6	4	50.0-	0	0	5	0	0
TRAFFIC ACC/PROP DAMAGE	2	3	13	19	31.6-	0	0	0	0	0
TRAFFIC ACC/PERS INJURY	1	0	4	13	69.2-	0	0	0	0	0
WATERCRAFT COMPLAINTS	0	0	1	0	+	0	0	0	0	0
ALL OTHER VEH COMPLAINTS	0	1	3	5	40.0-	0	0	0	0	0
SICK / INJURY COMPLAINTS	0	0	2	2	0.0	0	0	0	0	0
MISC PART III COMPLAINTS	0	0	21	15	40.0-	0	0	0	0	0
TOTAL PART III INCIDENTS	3	4	50	59	15.3-	0	0	5	0	0
TOTAL PART V FIRE INCIDS	0	0	0	1	100.0-	0	0	0	0	0
***** DEPARTMENT TOTALS	4	4	62	75	17.3-	0	0	11	0	0

\*\* LAW ENFORCEMENT USE ONLY \*\*

MI6316300

LPS-065

PAGE 1

08

REPORT DATE/TIME 01/15/87 21.30  
 PERIOD 12/01/86 THRU 12/31/86

HIGHLAND TWP  
 MONTHLY SUMMARY OF OFFENSES

ORI MI6316300

PAGE 1  
 REPORT LPS-065

***** DESCRIPTION *****	CURRENT PERIOD	LAST YR SAME PD	CURRENT Y-T-D	LAST Y-T-D	YEAR TO DATE PERCENT CHANGE	CUR ADULT	PD	ARRESTS JUVENILE	Y-T-D ADULT	ARRESTS JUVENILE
CRIMINAL HOMICIDE	0	0	0	0	+	1		0	1	0
CRIM. SEX. COND. I & III	2	0	11	7	57.1	1		0	3	0
ROBBERY	2	0	5	5	0.0	1		0	2	0
ASSAULT (AGGRAVATED)	2	1	25	23	8.7	0		0	9	0
BURGLARY	10	8	147	169	13.0-	0		0	4	0
LARCENY	29	22	461	334	38.0	3		2	18	14
MOTOR VEHICLE THEFT	3	5	53	60	11.7-	0		0	1	1
ARSON	0	0	8	10	20.0-	0		0	0	0
TOTAL PART I INCIDENTS	48	36	710	608	16.8	6		2	38	15
CRIM. SEX. COND. II & IV	0	0	0	2	100.0-	0		0	0	0
ASSAULT (NON-AGGRAVATED)	7	7	111	117	5.1-	1		0	5	0
FORGERY/COUNTERFEITING	0	0	8	2	300.0	0		0	1	0
FRAUD	6	14	54	65	16.9-	0		0	1	0
STOLEN PROPERTY	0	0	4	2	100.0	0		0	1	2
VANDALISM	13	28	344	330	4.2	0		0	3	0
WEAPONS	0	0	4	5	20.0-	0		0	0	0
SEX OFFENSES	0	0	10	10	0.0	0		0	0	1
NARCOTIC DRUG LAWS	0	1	4	15	73.3-	0		0	0	0
GAMBLING	0	0	0	1	100.0-	0		0	0	0
FAMILY AND CHILDREN	0	0	5	11	54.5-	0		0	0	0
OPER UNDER THE INFLUENCE	2	1	22	31	29.0-	2		0	22	0
LIQUOR LAWS	0	0	6	4	50.0	0		0	3	0
DISORDERLY CONDUCT	3	2	22	22	0.0	0		0	2	0
VAGRANCY	0	0	1	0	+	0		0	0	0
LOCAL, STATE, FED. OFFENSES	11	5	137	138	0.7-	1		0	18	2
TOTAL PART II INCIDENTS	42	58	732	755	3.0-	4		0	56	5
TOTAL PART I AND II	90	94	1442	1363	5.8	10		2	94	20
RUNAWAY/RECOVERED RUNAWAY	1	1	49	47	4.3	0		0	0	0
ESCAPE CUSTODY/TRUANCY	0	0	1	0	+	0		0	0	1
ALL OTHER JUV COMPLAINTS	0	2	28	37	24.3-	0		0	0	5
WARRANTS	4	3	41	45	8.9-	3		0	42	0
TRAFFIC ACC/PROP DAMAGE	70	75	560	545	2.8	0		0	0	0
TRAFFIC ACC/PERS INJURY	12	12	147	138	6.5	0		0	0	0
TRAFFIC ACC/FATALITIES	0	0	1	4	75.0-	0		0	0	0
WATERCRAFT ACC/PROP DAMAG	0	0	0	2	100.0-	0		0	0	0
WATERCRAFT ACC/PERS INJUR	0	0	2	0	+	0		0	0	0
WATERCRAFT ACC/FATALITIES	0	0	1	0	+	0		0	0	0
WATERCRAFT COMPLAINTS	0	0	4	1	300.0	0		0	3	0
ALL OTHER VEH COMPLAINTS	12	13	154	133	15.8	0		0	4	1
SICK / INJURY COMPLAINTS	6	10	60	90	33.3-	0		0	0	0
MISC PART III COMPLAINTS	25	24	457	513	10.9-	0		0	0	0
TOTAL PART III INCIDENTS	130	140	1505	1555	3.2-	3		0	46	7
TOTAL PART V FIRE INCIDS	2	2	13	14	7.1-	0		0	0	0
***** DEPARTMENT TOTALS	222	236	2960	2932	1.0	13		2	140	27

\*\* LAW ENFORCEMENT USE ONLY \*\*

MI6316300

LPS-065

PAGE 1

REPORT DATE/TIME 01/15/87 21.30  
 PERIOD 12/01/86 THRU 12/31/86

HOLLY TWP  
 MONTHLY SUMMARY OF OFFENSES

ORI MI6316300

PAGE 1  
 REPORT LPS-065

*----- DESCRIPTION -----*	CURRENT PERIOD	LAST YR SAME PD	CURRENT Y-T-D	LAST Y-T-D	YEAR TO DATE PERCENT CHANGE	CUR PD ADULT	ARRESTS JUVENILE	Y-T-D ADULT	ARRESTS JUVENILE
LARCENY	0	1	3	2	50.0	0	0	0	0
ARSON	0	0	5	1	400.0	0	0	0	0
TOTAL PART I INCIDENTS	0	1	8	3	166.7	0	0	0	0
ASSAULT (NON-AGGRAVATED)	0	0	0	1	100.0-	0	0	0	0
VANDALISM	0	0	0	1	100.0-	0	0	0	0
WEAPONS	0	0	1	0	+	0	0	1	0
OPER UNDER THE INFLUENCE	0	1	0	4	100.0-	0	0	0	0
TOTAL PART II INCIDENTS	0	1	1	6	83.3-	0	0	1	0
TOTAL PART I AND II	0	2	9	9	0.0	0	0	1	0
WARRANTS	0	0	0	2	100.0-	2	0	2	0
TRAFFIC ACC/PROP DAMAGE	0	0	4	3	33.3	0	0	0	0
TRAFFIC ACC/PERS INJURY	0	1	1	1	0.0	0	0	0	0
WATERCRAFT COMPLAINTS	0	0	1	2	50.0-	0	0	0	0
ALL OTHER VEH COMPLAINTS	0	0	0	2	100.0-	0	0	0	0
SICK / INJURY COMPLAINTS	0	0	1	0	+	0	0	0	0
MISC PART III COMPLAINTS	2	2	15	19	21.1-	0	0	0	0
TOTAL PART III INCIDENTS	2	3	22	29	24.1-	2	0	2	0
***** DEPARTMENT TOTALS	2	5	31	38	18.4-	2	0	3	0

\*\* LAW ENFORCEMENT USE ONLY \*\*

MI6316300 LPS-065

PAGE 1

82

REPORT DATE/TIME 01/15/87 21.30  
 PERIOD 12/01/86 THRU 12/31/86

INDEPENDENCE TWP  
 MONTHLY SUMMARY OF OFFENSES

ORI MI6316300

PAGE 1  
 REPORT LPS-065

*----- DESCRIPTION -----*	CURRENT PERIOD	LAST YR SAME PD	CURRENT Y-T-D	LAST Y-T-D	YEAR TO DATE PERCENT CHANGE	CUR PD		ARRESTS		Y-T-D ARRESTS	
						ADULT	JUVENILE	ADULT	JUVENILE	ADULT	JUVENILE
CRIM. SEX. COND. I & III	1	1	5	12	58.3-	1	0	3	0		
ROBBERY	1	0	6	9	33.3-	2	1	5	1		
ASSAULT (AGGRAVATED)	2	1	42	34	23.5	0	0	10	1		
BURGLARY	31	47	264	309	14.6-	7	0	26	4		
LARCENY	32	28	566	514	10.1	5	0	57	8		
MOTOR VEHICLE THEFT	7	5	87	73	19.2	0	0	7	9		
ARSON	0	0	10	17	41.2-	0	0	3	0		
TOTAL PART I INCIDENTS	74	82	980	968	1.2	15	1	111	23		
CRIM. SEX. COND. II & IV	0	0	2	0	+	0	0	2	0		
ASSAULT (NON-AGGRAVATED)	9	5	161	139	15.8	0	0	24	1		
FORGERY/COUNTERFEITING	0	1	7	9	22.2-	0	0	2	0		
FRAUD	5	9	63	92	31.5-	1	0	8	0		
EMBEZZLEMENT	0	0	1	3	66.7-	0	0	1	0		
STOLEN PROPERTY	0	0	5	2	150.0	1	0	7	0		
VANDALISM	27	27	509	438	16.2	0	0	8	5		
WEAPONS	0	0	4	7	42.9-	1	0	1	1		
SEX OFFENSES	1	1	13	10	30.0	0	0	0	0		
NARCOTIC DRUG LAWS	3	1	8	7	14.3	1	0	3	0		
GAMBLING	1	0	1	0	+	0	0	0	0		
FAMILY AND CHILDREN	2	1	7	4	75.0	0	0	0	0		
OPER UNDER THE INFLUENCE	7	4	68	73	6.8-	9	0	68	1		
LIQUOR LAWS	6	0	24	16	50.0	11	3	32	4		
DISORDERLY CONDUCT	2	3	40	26	53.8	1	0	28	0		
LOCAL, STATE, FED. OFFENSES	8	4	211	192	9.9	8	1	166	14		
TOTAL PART II INCIDENTS	71	56	1124	1018	10.4	33	4	350	26		
TOTAL PART I AND II	145	138	2104	1986	5.9	48	5	461	49		
RUNAWAY/RECOVERED RUNAWAY	3	3	34	58	41.4-	0	0	1	3		
ESCAPE CUSTODY/TRUANCY	0	0	2	0	+	0	0	0	1		
ALL OTHER JUV COMPLAINTS	0	2	27	47	42.6-	0	0	0	0		
WARRANTS	5	2	74	44	68.2	7	0	80	0		
TRAFFIC ACC/PROP DAMAGE	87	115	1024	890	15.1	0	0	0	0		
TRAFFIC ACC/PERS INJURY	39	27	336	326	3.1	0	0	0	0		
TRAFFIC ACC/FATALITIES	2	1	3	5	40.0-	0	0	0	0		
WATERCRAFT ACC/PROP DAMAG	0	0	1	0	+	0	0	0	0		
WATERCRAFT COMPLAINTS	0	0	4	2	100.0	0	0	0	0		
ALL OTHER VEH COMPLAINTS	19	9	180	145	24.1	1	0	9	1		
SICK / INJURY COMPLAINTS	4	8	91	107	15.0-	0	0	0	0		
MISC PART III COMPLAINTS	33	48	566	560	1.1	0	0	0	0		
TOTAL PART III INCIDENTS	192	215	2342	2184	7.2	8	0	90	5		
TOTAL PART V FIRE INCIDS	1	5	20	23	13.0-	0	0	0	0		
***** DEPARTMENT TOTALS	338	358	4466	4193	6.5	56	5	551	54		

\*\* LAW ENFORCEMENT USE ONLY \*\*

MI6316300

LPS-065

PAGE 1

83

REPORT DATE/TIME 01/15/87 21.30  
 PERIOD 12/01/86 THRU 12/31/86

JAIL  
 MONTHLY SUMMARY OF OFFENSES

ORI MI6316300

*----- DESCRIPTION -----*	CURRENT PERIOD	LAST YR SAME PD	CURRENT Y-T-D	LAST Y-T-D	YEAR TO DATE PERCENT CHANGE	CUR PD		ARRESTS JUVENILE	Y-T-D ARRESTS	
						ADULT	JUVENILE		ADULT	JUVENILE
CRIMINAL HOMICIDE	0	0	0	0	+	0	0	0	1	0
CRIM. SEX. COND. I & III	0	0	1	1	0.0	0	0	0	1	0
ASSAULT (AGGRAVATED)	0	0	26	5	420.0	0	0	0	4	0
BURGLARY	0	0	0	0	+	0	0	0	2	0
LARCENY	0	0	5	7	28.6-	0	0	0	0	0
MOTOR VEHICLE THEFT	0	0	0	0	+	0	0	0	1	0
ARSON	0	0	2	0	+	0	0	0	1	0
TOTAL PART I INCIDENTS	0	0	34	13	161.5	0	0	0	10	0
CRIM. SEX. COND. II & IV	0	0	1	0	+	0	0	0	0	0
ASSAULT (NON-AGGRAVATED)	6	3	54	22	145.5	0	0	0	7	0
FRAUD	0	1	0	1	100.0-	0	0	0	4	0
VANDALISM	1	1	6	2	200.0	0	0	0	2	0
WEAPONS	0	0	1	0	+	0	0	0	1	0
NARCOTIC DRUG LAWS	0	4	9	11	18.2-	0	0	0	0	0
OPER UNDER THE INFLUENCE	0	0	0	0	+	0	0	0	1	0
LIQUOR LAWS	0	0	1	0	+	0	0	0	2	0
LOCAL, STATE, FED. OFFENSES	0	0	5	6	16.7-	0	0	0	5	0
TOTAL PART II INCIDENTS	7	9	77	42	83.3	0	0	0	22	0
TOTAL PART I AND II	7	9	111	55	101.8	0	0	0	32	0
RUNAWAY/RECOVERED RUNAWAY	0	0	1	0	+	0	0	0	0	0
WARRANTS	4	3	43	47	8.5-	4	0	0	36	0
TRAFFIC ACC/PROP DAMAGE	0	0	1	0	+	0	0	0	0	0
ALL OTHER VEH COMPLAINTS	0	0	1	7	85.7-	0	0	0	0	0
MISC PART III COMPLAINTS	2	1	78	51	52.9	1	0	0	1	0
TOTAL PART III INCIDENTS	6	4	124	105	18.1	5	0	0	37	0
***** DEPARTMENT TOTALS	13	13	235	160	46.9	5	0	0	69	0

\*\* LAW ENFORCEMENT USE ONLY \*\*

84

*----- DESCRIPTION -----*	CURRENT PERIOD	LAST YR SAME PD	CURRENT Y-T-D	LAST Y-T-D	YEAR TO DATE PERCENT CHANGE	CUR PD ADULT	JUVENILE	ARRESTS ADULT	JUVENILE	Y-T-D ADULT	ARRESTS JUVENILE
CRIMINAL HOMICIDE	0	0	0	1	100.0-	0	0	0	0	1	0
CRIM. SEX. COND. I & III	0	0	1	0	+	0	0	0	0	0	0
CRIM. SEX. COND. II & IV	0	0	3	1	200.0	0	0	0	0	2	1
ROBBERY	1	1	3	4	25.0-	0	0	0	0	1	0
ASSAULT (AGGRAVATED)	0	0	10	10	0.0	0	0	0	0	1	0
BURGLARY	11	11	105	63	66.7	0	0	0	0	3	5
LARCENY	8	6	140	96	45.8	2	0	0	0	4	2
MOTOR VEHICLE THEFT	2	5	31	25	24.0	0	0	0	0	1	0
ARSON	1	0	9	3	200.0	0	0	0	0	1	0
TOTAL PART I INCIDENTS	23	23	302	203	48.8	2	0	0	0	14	8
CRIM. SEX. COND. II & IV	0	0	1	0	+	0	0	0	0	0	0
ASSAULT (NON-AGGRAVATED)	3	3	46	40	15.0	0	0	0	0	1	0
FORGERY/COUNTERFEITING	1	0	3	5	40.0-	0	0	0	0	0	0
FRAUD	4	2	22	42	47.6-	0	0	0	0	0	0
EMBEZZLEMENT	0	1	0	3	100.0-	0	0	0	0	0	0
STOLEN PROPERTY	0	0	3	1	200.0	0	0	0	0	2	0
VANDALISM	10	8	142	82	73.2	0	0	0	0	0	2
WEAPONS	0	0	3	4	25.0-	0	0	0	0	3	0
SEX OFFENSES	0	0	5	3	66.7-	0	0	0	0	0	0
NARCOTIC DRUG LAWS	0	0	1	3	66.7-	0	0	0	0	0	0
FAMILY AND CHILDREN	0	1	1	4	75.0-	0	0	0	0	0	0
OPER UNDER THE INFLUENCE	2	3	21	55	61.8-	2	0	0	0	21	0
LIQUOR LAWS	0	0	17	10	70.0	0	0	0	0	20	1
DISORDERLY CONDUCT	2	1	15	18	16.7-	0	0	0	0	1	0
VAGRANCY	0	0	0	2	100.0-	0	0	0	0	0	0
LOCAL, STATE, FED. OFFENSES	6	4	67	73	8.2-	1	0	0	0	18	1
TOTAL PART II INCIDENTS	28	23	347	345	0.6	3	0	0	0	66	4
TOTAL PART I AND II	51	46	649	548	18.4	5	0	0	0	80	12
JUVENILE COMPLAINTS	0	0	0	1	100.0-	0	0	0	0	0	0
RUNAWAY/RECOVERED RUNAWAY	0	1	18	17	5.9	0	0	0	0	0	0
ALL OTHER JUV COMPLAINTS	0	0	10	10	0.0	0	0	0	0	0	1
WARRANTS	1	4	39	31	25.8	1	0	0	0	41	0
TRAFFIC ACC/PROP DAMAGE	32	26	280	260	7.7	0	0	0	0	0	0
TRAFFIC ACC/PERS INJURY	8	10	101	94	7.4	0	0	0	0	0	0
TRAFFIC ACC/FATALITIES	0	0	2	2	0.0	0	0	0	0	0	0
WATERCRAFT COMPLAINTS	0	0	1	1	0.0	0	0	0	0	0	0
ALL OTHER VEH COMPLAINTS	10	25	132	172	23.3-	1	0	0	0	17	3
SICK / INJURY COMPLAINTS	4	5	43	36	19.4	0	0	0	0	0	0
MISC PART III COMPLAINTS	23	25	263	346	24.0-	0	0	0	0	0	0
TOTAL PART III INCIDENTS	78	96	889	970	8.4-	2	0	0	0	58	4
TOTAL PART IV INCIDENTS	0	0	190	0	+	0	0	0	0	0	0
TOTAL PART V FIRE INCIDS	2	0	19	6	216.7	0	0	0	0	0	0
***** DEPARTMENT TOTALS	131	142	1747	1524	14.6	7	0	0	0	138	16
** LAW ENFORCEMENT USE ONLY **											
						MI6316300	LPS-065	PAGE		1	

85

REPORT DATE/TIME 01/15/87 21.30  
 PERIOD 12/01/86 THRU 12/31/86

MILFORD TWP  
 MONTHLY SUMMARY OF OFFENSES

ORI MI5316300

PAGE 1  
 REPORT LPS-065

*---- DESCRIPTION ----*	CURRENT	LAST YR	CURRENT	LAST	YEAR TO DATE	CUR PD	ARRESTS		Y-T-D ARRESTS	
	PERIOD	SAME PD	Y-T-D	Y-T-D	PERCENT CHANGE		ADULT	JUVENILE	ADULT	JUVENILE
CRIMINAL HOMICIDE	0	0	0	0	+	0	0	1	0	
LARCENY	0	0	0	2	100.0-	0	0	0	0	
TOTAL PART I INCIDENTS	0	0	0	2	100.0-	0	0	1	0	
FRAUD	0	0	1	0	+	0	0	1	0	
VANDALISM	0	0	0	4	100.0-	0	0	1	0	
OPER UNDER THE INFLUENCE	0	0	1	4	75.0-	0	0	1	0	
DISORDERLY CONDUCT	0	0	1	0	+	0	0	1	0	
LOCAL, STATE, FED. OFFENSES	0	0	0	2	100.0-	0	0	0	0	
TOTAL PART II INCIDENTS	0	0	3	10	70.0-	0	0	4	0	
TOTAL PART I AND II	0	0	3	12	75.0-	0	0	5	0	
WARRANTS	0	0	6	5	20.0	0	0	6	0	
TRAFFIC ACC/PROP DAMAGE	1	0	2	3	33.3-	0	0	0	0	
TRAFFIC ACC/PERS INJURY	0	0	2	2	0.0	0	0	0	0	
WATERCRAFT COMPLAINTS	0	0	7	4	75.0	0	0	0	0	
ALL OTHER VEH COMPLAINTS	0	0	3	11	72.7-	0	0	3	0	
SICK / INJURY COMPLAINTS	0	0	1	1	0.0	0	0	0	0	
MISC PART III COMPLAINTS	2	4	12	22	45.5-	0	0	0	0	
TOTAL PART III INCIDENTS	3	4	33	48	31.3-	0	0	9	0	
***** DEPARTMENT TOTALS	3	4	36	60	40.0-	0	0	14	0	
** LAW ENFORCEMENT USE ONLY **							MI6316300	LPS-065	PAGE	1

98



REPORT DATE/TIME 01/15/87 21.30  
 PERIOD 12/01/86 THRU 12/31/86

NOVI TWP  
 MONTHLY SUMMARY OF OFFENSES

ORI MI6316300

PAGE 1  
 REPORT LPS-065

***** DESCRIPTION *****	CURRENT PERIOD	LAST YR SAME PD	CURRENT Y-T-D	LAST Y-T-D	YEAR TO DATE PERCENT CHANGE	CUR PD ADULT	ARRESTS JUVENILE	Y-T-D ADULT	ARRESTS JUVENILE
ARSON	0	0	1	0	+	0	0	0	0
TOTAL PART I INCIDENTS	0	0	1	0	+	0	0	0	0
FORGERY/COUNTERFEITING	0	0	0	1	100.0-	0	0	0	0
VANDALISM	0	0	1	0	+	0	0	0	0
OPER UNDER THE INFLUENCE	0	2	2	15	86.7-	0	0	2	0
TOTAL PART II INCIDENTS	0	2	3	16	81.3-	0	0	2	0
TOTAL PART I AND II	0	2	4	16	75.0-	0	0	2	0
WARRANTS	1	1	6	5	20.0	1	0	5	0
TRAFFIC ACC/PROP DAMAGE	2	0	3	2	50.0	0	0	0	0
TRAFFIC ACC/PERS INJURY	1	0	2	1	100.0	0	0	0	0
WATERCRAFT COMPLAINTS	0	0	1	1	0.0	0	0	0	0
MISC PART III COMPLAINTS	1	0	12	9	33.3	0	0	0	0
TOTAL PART III INCIDENTS	5	1	24	18	33.3	1	0	5	0
***** DEPARTMENT TOTALS	5	3	28	34	17.6-	1	0	7	0

\*\* LAW ENFORCEMENT USE ONLY \*\*

MI6316300

LPS-065

PAGE 1

87

REPORT DATE/TIME 01/15/87 21.30  
 PERIOD 12/01/86 THRU 12/31/86

OAKLAND TWP  
 MONTHLY SUMMARY OF OFFENSES

ORI M16316300

PAGE 1  
 REPORT LPS-065

DESCRIPTION	CURRENT PERIOD	LAST YR SAME PD	CURRENT Y-T-D	LAST Y-T-D	YEAR TO DATE PERCENT CHANGE	CUR PD ADULT	PD JUVENILE	ARRESTS ADULT	Y-T-D ARRESTS JUVENILE
CRIMINAL HOMICIDE	0	0	0	0	+	0	0	1	0
CRIM. SEX. COND. I & III	0	0	1	0	+	0	0	0	1
ASSAULT (AGGRAVATED)	0	0	3	3	0.0	0	0	2	0
BURGLARY	1	5	80	61	31.1	0	0	8	2
LARCENY	6	5	92	73	26.0	0	0	4	0
MOTOR VEHICLE THEFT	3	2	22	23	4.3-	0	0	2	0
ARSON	0	0	7	2	250.0	0	0	0	0
TOTAL PART I INCIDENTS	10	12	205	162	26.5	0	0	17	3
CRIM. SEX. COND. II & IV	0	0	1	1	0.0	0	0	0	0
ASSAULT (NON-AGGRAVATED)	3	2	18	27	33.3-	2	0	3	0
FORGERY/COUNTERFEITING	0	0	1	1	0.0	0	0	0	0
FRAUD	2	0	6	6	0.0	0	0	0	0
STOLEN PROPERTY	0	0	2	0	+	0	0	3	0
VANDALISM	3	4	76	65	16.9	0	0	0	0
WEAPONS	0	0	3	0	+	0	0	0	0
SEX OFFENSES	0	0	3	0	+	0	0	1	0
NARCOTIC DRUG LAWS	0	0	0	2	100.0-	0	0	1	0
FAMILY AND CHILDREN	0	0	2	0	+	0	0	0	0
OPER UNDER THE INFLUENCE	0	3	14	10	40.0	0	0	14	0
LIQUOR LAWS	1	0	4	0	+	1	0	10	0
DISORDERLY CONDUCT	0	1	5	2	150.0	0	0	1	0
LOCAL, STATE, FED. OFFENSES	1	1	29	26	11.5	0	0	0	0
TOTAL PART II INCIDENTS	10	11	164	140	17.1	3	0	33	0
TOTAL PART I AND II	20	23	369	302	22.2	3	0	50	3
RUNAWAY/RECOVERED RUNAWAY	0	1	4	11	63.6-	0	0	0	0
ALL OTHER JUV COMPLAINTS	0	0	2	1	100.0	0	0	0	0
WARRANTS	0	0	20	7	185.7	0	0	20	0
TRAFFIC ACC/PROP DAMAGE	28	33	183	178	2.8	0	0	0	0
TRAFFIC ACC/PERS INJURY	6	13	92	92	0.0	0	0	0	0
TRAFFIC ACC/FATALITIES	0	0	2	2	0.0	0	0	0	0
WATERCRAFT COMPLAINTS	0	0	0	1	100.0-	0	0	0	0
ALL OTHER VEH COMPLAINTS	1	0	29	16	81.3	0	0	4	1
SICK / INJURY COMPLAINTS	0	2	14	21	33.3-	0	0	0	0
MISC PART III COMPLAINTS	8	10	120	119	0.8	0	0	0	0
TOTAL PART III INCIDENTS	43	59	466	448	4.0	0	0	24	1
TOTAL PART V FIRE INCIDS	0	0	4	6	33.3-	0	0	1	0
***** DEPARTMENT TOTALS	63	82	839	756	11.0	3	0	75	4

\*\* LAW ENFORCEMENT USE ONLY \*\*

M16316300 LPS-065

PAGE 1

88

REPORT DATE/TIME 01/15/87 21.30  
 PERIOD 12/01/86 THRU 12/31/86

ORION TWP  
 MONTHLY SUMMARY OF OFFENSES

ORI MI6316300

PAGE  
 REPORT LPS-065

DESCRIPTION	CURRENT PERIOD	LAST YR SAME PD	CURRENT Y-T-D	LAST Y-T-D	YEAR TO DATE PERCENT CHANGE	CUR ADULT	PD JUVENILE	ARRESTS ADULT	Y-T-D ARRESTS JUVENILE
CRIMINAL HOMICIDE	0	0	0	1	100.0-	0	0	0	0
CRIM. SEX. COND. I & III	1	1	7	8	12.5-	0	0	2	1
ROBBERY	1	0	11	9	22.2	0	0	1	0
ASSAULT (AGGRAVATED)	1	3	28	33	15.2-	1	0	8	2
BURGLARY	16	23	224	225	0.4-	3	2	28	8
LARCENY	33	33	585	527	11.0	2	1	36	10
MOTOR VEHICLE THEFT	8	10	119	97	22.7	0	0	0	1
ARSON	0	1	22	16	37.5	0	0	2	0
TOTAL PART I INCIDENTS	60	71	996	916	8.7	6	3	77	22
CRIM. SEX. COND. II & IV	0	1	1	4	75.0-	0	0	0	0
ASSAULT (NON-AGGRAVATED)	16	17	160	156	2.6	1	0	4	1
FORGERY/COUNTERFEITING	0	0	8	2	300.0	0	0	0	0
FRAUD	5	9	88	87	1.1	0	0	3	0
EMBEZZLEMENT	0	0	3	3	0.0	0	0	1	0
STOLEN PROPERTY	0	0	3	1	200.0	1	2	4	2
VANDALISM	28	19	401	406	1.2-	3	0	8	4
WEAPONS	0	0	6	9	33.3-	0	0	2	2
SEX OFFENSES	0	2	7	15	53.3-	0	0	1	0
NARCOTIC DRUG LAWS	2	0	11	4	175.0	1	0	4	0
FAMILY AND CHILDREN	0	1	4	11	63.6-	0	0	0	0
OPER UNDER THE INFLUENCE	5	5	80	93	14.0-	6	0	78	2
LIQUOR LAWS	0	0	8	9	11.1-	0	0	7	0
DISORDERLY CONDUCT	1	1	23	31	25.8-	1	0	11	0
LOCAL, STATE, FED. OFFENSES	6	9	166	185	10.3-	0	0	9	0
TOTAL PART II INCIDENTS	63	64	969	1016	4.6-	13	2	132	11
TOTAL PART I AND II	123	135	1965	1932	1.7	19	5	209	33
RUNAWAY/RECOVERED RUNAWAY	2	6	47	53	11.3-	0	0	0	0
ESCAPE CUSTODY/TRUANCY	0	0	3	0	+	0	0	0	2
ALL OTHER JUV COMPLAINTS	1	1	27	29	6.9-	0	0	0	0
WARRANTS	7	3	63	59	6.8	7	0	65	0
TRAFFIC ACC/PROP DAMAGE	88	97	994	866	14.8	0	0	0	0
TRAFFIC ACC/PERS INJURY	29	27	270	292	7.5-	0	0	0	0
TRAFFIC ACC/FATALITIES	0	1	2	6	66.7-	0	0	0	0
WATERCRAFT ACC/PROP DAMAG	0	0	1	1	0.0	0	0	0	0
WATERCRAFT ACC/PERS INJUR	0	0	2	2	0.0	0	0	0	0
WATERCRAFT COMPLAINTS	0	0	13	22	40.9-	0	0	0	0
ALL OTHER VEH COMPLAINTS	17	19	304	229	32.8	0	0	0	1
SICK / INJURY COMPLAINTS	5	8	72	105	31.4-	0	0	0	0
MISC PART III COMPLAINTS	31	42	525	497	5.6	0	0	0	0
TOTAL PART III INCIDENTS	180	204	2323	2161	7.5	7	0	79	3
TOTAL PART V FIRE INCIDS	2	3	16	19	15.8-	0	0	2	0
***** DEPARTMENT TOTALS	305	342	4304	4112	4.7	26	5	290	36

\*\* LAW ENFORCEMENT USE ONLY \*\*

MI631

LPS-065

PAGE 1

69

REPORT DATE/TIME 01/15/87 21.30  
 PERIOD 12/01/86 THRU 12/31/86

OXFORD TWP  
 MONTHLY SUMMARY OF OFFENSES

ORI MI6316300

PAGE 1  
 REPORT LPS-065

*----- DESCRIPTION -----*	CURRENT PERIOD	LAST YR SAME PD	CURRENT Y-T-D	LAST Y-T-D	YEAR TO DATE PERCENT CHANGE	CUR PD ADULT	ARRESTS JUVENILE	Y-T-D ADULT	ARRESTS JUVENILE
BURGLARY	0	0	1	0	+	0	0	0	0
LARCENY	0	0	0	2	100.0-	0	0	0	0
ARSON	0	0	3	0	+	0	0	1	0
TOTAL PART I INCIDENTS	0	0	4	2	100.0	0	0	1	0
ASSAULT (NON-AGGRAVATED)	1	0	1	1	0.0	2	0	2	0
FRAUD	0	0	0	1	100.0-	0	0	0	0
VANDALISM	0	0	1	1	0.0	0	0	0	0
OPER UNDER THE INFLUENCE	0	0	2	10	80.0-	0	0	2	0
TOTAL PART II INCIDENTS	1	0	4	13	69.2-	2	0	4	0
TOTAL PART I AND II	1	0	8	15	46.7-	2	0	5	0
WARRANTS	0	1	3	4	25.0-	0	0	3	0
TRAFFIC ACC/PROP DAMAGE	1	0	7	3	133.3	0	0	0	0
TRAFFIC ACC/PERS INJURY	0	1	1	1	0.0	0	0	0	0
ALL OTHER VEH COMPLAINTS	0	0	0	6	100.0-	0	0	0	0
SICK / INJURY COMPLAINTS	0	0	1	1	0.0	0	0	0	0
MISC PART III COMPLAINTS	0	1	15	19	21.1-	0	0	0	0
TOTAL PART III INCIDENTS	1	3	27	34	20.6-	0	0	3	0
***** DEPARTMENT TOTALS	2	3	35	49	28.6-	2	0	8	0

\*\* LAW ENFORCEMENT USE ONLY \*\*

MI6316300

LPS-065

PAGE 1

06

REPORT DATE/TIME 01/15/87 21.30  
 PERIOD 12/01/86 THRU 12/31/86

ROCHESTER HILLS  
 MONTHLY SUMMARY OF OFFENSES

ORI MI6316300

PAGE 1  
 REPORT LPS-065

***** DESCRIPTION *****	CURRENT PERIOD	LAST YR SAME PD	CURRENT Y-T-D	LAST Y-T-D	YEAR TO DATE PERCENT CHANGE	CUR ADULT	PD JUVENILE	ARRESTS ADULT	Y-T-D ADULT	ARRESTS JUVENILE
CRIM. SEX. COND. I & III	0	0	13	12	8.3	0	0	0	6	0
ROBBERY	3	3	26	32	18.8-	0	0	0	4	0
ASSAULT (AGGRAVATED)	5	7	80	64	25.0	1	0	0	13	2
BURGLARY	47	28	458	435	5.3	2	0	0	20	6
LARCENY	152	141	1680	1490	12.8	9	3	0	102	49
MOTOR VEHICLE THEFT	16	24	253	231	9.5	0	0	0	6	4
ARSON	1	2	17	40	57.5-	0	0	0	2	3
TOTAL PART I INCIDENTS	224	205	2527	2304	9.7	12	3	0	153	64
CRIM. SEX. COND. II & IV	1	0	6	2	200.0	0	0	0	2	1
ASSAULT (NON-AGGRAVATED)	22	12	246	218	12.8	1	0	0	21	0
FORGERY/COUNTERFEITING	1	0	16	15	6.7	0	0	0	6	1
FRAUD	36	44	353	427	17.3-	2	0	0	20	0
EMBEZZLEMENT	1	0	10	4	150.0	0	0	0	3	0
STOLEN PROPERTY	1	0	13	6	116.7	1	1	0	15	5
VANDALISM	105	71	1048	878	19.4	1	0	0	20	2
WEAPONS	1	2	7	11	36.4-	0	0	0	4	0
SEX OFFENSES	5	0	35	18	94.4	0	0	0	5	0
NARCOTIC DRUG LAWS	3	2	14	24	41.7-	0	0	0	6	0
FAMILY AND CHILDREN	1	0	9	18	50.0-	0	0	0	1	0
OPER UNDER THE INFLUENCE	10	13	128	155	17.4-	9	0	0	127	0
LIQUOR LAWS	1	0	25	25	0.0	1	0	0	38	2
DISORDERLY CONDUCT	9	4	85	63	34.9	1	0	0	19	4
VAGRANCY	1	0	2	4	50.0-	0	0	0	0	0
LOCAL, STATE, FED. OFFENSES	25	30	323	355	9.0-	19	1	0	156	22
TOTAL PART II INCIDENTS	223	178	2320	2223	4.4	35	2	0	443	37
TOTAL PART I AND II	447	383	4847	4527	7.1	47	5	0	596	101
RUNAWAY/RECOVERED RUNAWAY	9	1	78	109	28.4-	0	0	0	0	0
ESCAPE CUSTODY/TRUANCY	0	1	0	1	100.0-	0	0	0	0	0
ALL OTHER JUV COMPLAINTS	6	3	37	57	35.1-	0	0	0	0	0
WARRANTS	10	3	120	114	5.3	7	0	0	118	0
TRAFFIC ACC/PROP DAMAGE	233	338	2284	1976	15.6	0	0	0	0	0
TRAFFIC ACC/PERS INJURY	66	77	671	638	5.2	0	0	0	0	0
TRAFFIC ACC/FATALITIES	1	1	5	5	0.0	0	0	0	0	0
WATERCRAFT COMPLAINTS	0	0	3	5	40.0-	0	0	0	0	0
ALL OTHER VEH COMPLAINTS	47	29	501	388	29.1	5	0	0	31	5
SICK / INJURY COMPLAINTS	12	27	234	327	28.4-	0	0	0	0	0
MISC PART III COMPLAINTS	87	90	1121	1265	11.4-	0	0	0	0	0
TOTAL PART III INCIDENTS	471	570	5054	4885	3.5	12	0	0	149	5
TOTAL PART V FIRE INCIDS	5	5	43	35	22.9	0	0	0	0	0
***** DEPARTMENT TOTALS	923	958	9944	9447	5.3	59	5	0	745	106

\*\* LAW ENFORCEMENT USE ONLY \*\*

MI6316300

LPS-065

PAGE 1

16

REPORT DATE/TIME 01/15/87 21.30  
 PERIOD 12/01/86 THRU 12/31/86

ROYAL OAK TWP  
 MONTHLY SUMMARY OF OFFENSES

ORI MI6316300

PAGE 1  
 REPORT LPS-065

***** DESCRIPTION *****	CURRENT PERIOD	LAST YR SAME PD	CURRENT Y-T-D	LAST Y-T-D	YEAR TO DATE PERCENT CHANGE	CUR PD ADULT	ARRESTS JUVENILE	Y-T-D ARRESTS	
								ADULT	JUVENILE
ARSON	1	1	20	10	100.0	0	0	0	0
TOTAL PART I INCIDENTS	1	1	20	10	100.0	0	0	0	0
ASSAULT (NON-AGGRAVATED)	0	0	1	0	+	0	0	0	0
NARCOTIC DRUG LAWS	0	0	1	0	+	0	0	0	0
FAMILY AND CHILDREN	0	0	0	1	100.0-	0	0	0	0
OPER UNDER THE INFLUENCE	2	4	82	92	10.9-	2	0	83	0
LOCAL, STATE, FED. OFFENSES	0	0	0	0	+	0	0	1	0
TOTAL PART II INCIDENTS	2	4	84	93	9.7-	2	0	84	0
TOTAL PART I AND II	3	5	104	103	1.0	2	0	84	0
WARRANTS	0	1	10	17	41.2-	0	0	10	0
TRAFFIC ACC/PROP DAMAGE	0	0	1	1	0.0	0	0	0	0
TRAFFIC ACC/PERS INJURY	0	0	1	1	0.0	0	0	0	0
ALL OTHER VEH COMPLAINTS	0	0	1	1	0.0	0	0	0	0
MISC PART III COMPLAINTS	1	1	16	27	40.7-	0	0	0	0
TOTAL PART III INCIDENTS	1	2	29	47	38.3-	0	0	10	0
***** DEPARTMENT TOTALS	4	7	133	150	11.3-	2	0	94	0

\*\* LAW ENFORCEMENT USE ONLY \*\*

MI6316300 LPS-065

PAGE 1

92

REPORT DATE/TIME 01/15/87 21.30  
 PERIOD 12/01/86 THRU 12/31/86

ROSE TWP  
 MONTHLY SUMMARY OF OFFENSES

ORI MI6316300

PAGE 1  
 REPORT LPS-065

*----- DESCRIPTION -----*	CURRENT PERIOD	LAST YR SAME PD	CURRENT Y-T-D	LAST Y-T-D	YEAR TO DATE PERCENT CHANGE	CUR PD ADULT	ARRESTS JUVENILE	Y-T-D ADULT	ARRESTS JUVENILE
BURGLARY	0	0	1	0	+	0	0	0	0
LARCENY	0	0	0	2	100.0-	0	0	0	0
ARSON	0	0	2	1	100.0	0	0	0	0
TOTAL PART I INCIDENTS	0	0	3	3	0.0	0	0	0	0
ASSAULT (NON-AGGRAVATED)	0	0	1	0	+	0	0	0	0
OPER UNDER THE INFLUENCE	0	1	1	3	66.7-	0	0	1	0
DISORDERLY CONDUCT	0	0	0	1	100.0-	0	0	0	0
TOTAL PART II INCIDENTS	0	1	2	4	50.0-	0	0	1	0
TOTAL PART I AND II	0	1	5	7	28.6-	0	0	1	0
ALL OTHER JUV COMPLAINTS	0	0	0	1	100.0-	0	0	0	0
WARRANTS	0	0	0	1	100.0-	0	0	0	0
TRAFFIC ACC/PROP DAMAGE	0	0	2	3	33.3-	0	0	0	0
TRAFFIC ACC/PERS INJURY	0	0	0	3	100.0-	0	0	0	0
WATERCRAFT ACC/PERS INJUR	0	0	1	0	+	0	0	0	0
WATERCRAFT COMPLAINTS	0	0	2	2	0.0	0	0	0	0
ALL OTHER VEH COMPLAINTS	0	0	2	1	100.0	0	0	0	0
SICK / INJURY COMPLAINTS	0	0	1	0	+	0	0	0	0
MISC PART III COMPLAINTS	0	1	4	4	0.0	0	0	0	0
TOTAL PART III INCIDENTS	0	1	12	15	20.0-	0	0	0	0
***** DEPARTMENT TOTALS	0	2	17	22	22.7-	0	0	1	0

\*\* LAW ENFORCEMENT USE ONLY \*\*

MI6316300

LPS-065

PAGE 1

93

REPORT DATE/TIME 01/15/87 21.30  
 PERIOD 12/01/86 THRU 12/31/86

SOUTHFIELD TWP  
 MONTHLY SUMMARY OF OFFENSES

ORI M16316300

PAGE 1  
 REPORT LPS-065

*----- DESCRIPTION -----*	CURRENT	LAST YR	CURRENT	LAST	YEAR TO DATE	CUR	PD	ARRESTS	Y-T-D	ARRESTS	
	PERIOD	SAME PD	Y-T-D	Y-T-D	PERCENT CHANGE	ADULT	JUVENILE	JUVENILE	ADULT	JUVENILE	
LARCENY	1	0	2	1	100.0	0	0	0	0	0	
TOTAL PART I INCIDENTS	1	0	2	1	100.0	0	0	0	0	0	
STOLEN PROPERTY	0	0	0	1	100.0-	0	0	0	0	0	
VANDALISM	0	0	1	1	0.0	0	0	0	0	0	
NARCOTIC DRUG LAWS	0	0	1	0	+	0	0	0	0	0	
FAMILY AND CHILDREN	0	0	0	1	100.0-	0	0	0	0	0	
OPER UNDER THE INFLUENCE	1	0	8	37	78.4-	1	0	8	8	0	
TOTAL PART II INCIDENTS	1	0	10	40	75.0-	1	0	8	8	0	
TOTAL PART I AND II	2	0	12	41	70.7-	1	0	8	8	0	
RUNAWAY/RECOVERED RUNAWAY	0	0	1	0	+	0	0	0	0	0	
WARRANTS	0	0	1	5	80.0-	0	0	1	1	0	
TRAFFIC ACC/PROP DAMAGE	1	0	4	0	+	0	0	0	0	0	
TRAFFIC ACC/PERS INJURY	0	0	4	1	300.0	0	0	0	0	0	
ALL OTHER VEH COMPLAINTS	0	0	1	1	0.0	0	0	0	0	0	
SICK / INJURY COMPLAINTS	1	0	1	0	+	0	0	0	0	0	
MISC PART III COMPLAINTS	0	0	4	3	33.3	0	0	0	0	0	
TOTAL PART III INCIDENTS	2	0	16	10	60.0	0	0	1	1	0	
TOTAL PART V FIRE INCIDS	0	0	0	1	100.0-	0	0	0	0	0	
***** DEPARTMENT TOTALS	4	0	28	52	46.2-	1	0	9	9	0	
** LAW ENFORCEMENT USE ONLY **								M16316300	LPS-065	PAGE	1



REPORT DATE/TIME 01/15/87 21.30  
 PERIOD 12/01/86 THRU 12/31/86

TROY  
 MONTHLY SUMMARY OF OFFENSES

ORI MI6316300

PAGE 1  
 REPORT LPS-065

***** DESCRIPTION *****	CURRENT PERIOD	LAST YR SAME PD	CURRENT Y-T-D	LAST Y-T-D	YEAR TO DATE PERCENT CHANGE	CUR PD ADULT	ARRESTS JUVENILE	Y-T-D ARRESTS ADULT	ARRESTS JUVENILE
LARCENY	0	0	1	2	50.0-	0	0	0	0
TOTAL PART I INCIDENTS	0	0	1	2	50.0-	0	0	0	0
ASSAULT (NON-AGGRAVATED)	0	1	0	2	100.0-	0	0	0	0
FRAUD	0	0	0	2	100.0-	0	0	0	0
STOLEN PROPERTY	0	0	0	0	+	0	0	2	0
VANDALISM	0	0	1	0	+	0	0	0	0
OPER UNDER THE INFLUENCE	1	2	14	22	36.4-	1	0	14	0
LOCAL, STATE, FED. OFFENSES	0	0	1	0	+	0	0	0	0
TOTAL PART II INCIDENTS	1	3	16	26	38.5-	1	0	16	0
TOTAL PART I AND II	1	3	17	28	39.3-	1	0	16	0
WARRANTS	0	0	2	3	33.3-	0	0	2	0
TRAFFIC ACC/PROP DAMAGE	0	0	1	2	50.0-	0	0	0	0
TRAFFIC ACC/PERS INJURY	0	0	0	1	100.0-	0	0	0	0
WATERCRAFT ACC/PROP DAMAG	0	0	1	0	+	0	0	0	0
WATERCRAFT ACC/PERS INJUR	0	0	2	0	+	0	0	0	0
ALL OTHER VEH COMPLAINTS	0	0	2	0	+	0	0	2	0
MISC PART III COMPLAINTS	0	1	12	9	33.3	0	0	0	0
TOTAL PART III INCIDENTS	0	1	20	15	33.3	0	0	4	0
***** DEPARTMENT TOTALS	1	4	37	43	14.0-	1	0	20	0

\*\* LAW ENFORCEMENT USE ONLY \*\*

MI6316300

LPS-065

PAGE 1

95

REPORT DATE/TIME 01/15/87 21.30  
 PERIOD 12/01/86 THRU 12/31/86

SPRINGFIELD TWP  
 MONTHLY SUMMARY OF OFFENSES

ORI M16316300

***** DESCRIPTION *****	CURRENT PERIOD	LAST YR SAME PD	CURRENT Y-T-D	LAST Y-T-D	YEAR TO DATE PERCENT CHANGE	CUR ADULT	PD	ARRESTS JUVENILE	Y-T-D ADULT	ARRESTS JUVENILE
CRIMINAL HOMICIDE	0	0	0	0	+	0	0	0	1	0
CRIM. SEX. COND. I & III	0	0	0	1	100.0-	0	0	0	0	0
ROBBERY	0	0	4	4	0.0	0	0	0	2	0
ASSAULT (AGGRAVATED)	0	3	9	13	30.8-	1	0	0	4	0
BURGLARY	10	8	131	103	27.2	0	0	0	8	1
LARCENY	12	8	187	139	34.5	1	0	0	4	1
MOTOR VEHICLE THEFT	1	2	35	22	59.1	0	0	0	4	1
ARSON	0	0	4	2	100.0	0	0	0	0	0
TOTAL PART I INCIDENTS	23	21	370	284	30.3	2	0	0	23	3
CRIM. SEX. COND. II & IV	0	0	1	1	0.0	0	0	0	0	0
ASSAULT (NON-AGGRAVATED)	8	4	77	44	75.0	0	0	0	2	0
FORGERY/COUNTERFEITING	0	0	0	1	100.0-	0	0	0	0	0
FRAUD	1	0	11	12	8.3-	0	0	0	3	0
STOLEN PROPERTY	0	0	0	0	+	0	0	0	2	0
VANDALISM	9	4	117	106	10.4	0	0	0	2	3
WEAPONS	0	0	1	6	83.3-	0	0	0	0	0
SEX OFFENSES	0	0	7	6	16.7	0	0	0	2	0
NARCOTIC DRUG LAWS	0	1	2	2	0.0	0	0	0	0	0
GAMBLING	0	0	1	1	0.0	0	0	0	0	0
FAMILY AND CHILDREN	2	0	3	2	50.0	0	0	0	0	0
OPER UNDER THE INFLUENCE	2	0	18	28	35.7-	2	0	0	18	0
LIQUOR LAWS	1	0	4	1	300.0	0	0	0	2	0
DISORDERLY CONDUCT	0	0	13	6	116.7	0	0	0	8	0
LOCAL STATE, FED. OFFENSES	1	2	63	73	13.7-	1	0	0	8	1
TOTAL PART II INCIDENTS	24	11	318	289	10.0	3	0	0	47	4
TOTAL PART I AND II	47	32	688	573	20.1	5	0	0	70	7
RUNAWAY/RECOVERED RUNAWAY	1	1	18	19	5.3-	0	0	0	0	0
ESCAPE CUSTODY/TRUANCY	0	0	1	0	+	0	0	0	1	0
ALL OTHER JUV COMPLAINTS	0	0	14	9	55.6	0	0	0	1	0
WARRANTS	1	3	23	28	17.9-	2	0	0	23	0
TRAFFIC ACC/PROP DAMAGE	23	30	202	191	5.8	0	0	0	0	0
TRAFFIC ACC/PERS INJURY	14	6	86	94	8.5-	0	0	0	0	0
TRAFFIC ACC/FATALITIES	0	0	3	3	0.0	0	0	0	0	0
WATERCRAFT ACC/PROP DAMAG	0	0	1	0	+	0	0	0	0	0
WATERCRAFT ACC/PERS INJUR	0	0	0	1	100.0-	0	0	0	0	0
WATERCRAFT COMPLAINTS	0	0	1	2	50.0-	0	0	0	0	0
ALL OTHER VEH COMPLAINTS	5	3	68	71	4.2-	0	0	0	1	1
SICK / INJURY COMPLAINTS	2	9	34	53	35.8-	0	0	0	0	0
MISC PART III COMPLAINTS	14	25	220	249	11.6-	0	0	0	0	0
TOTAL PART III INCIDENTS	60	77	671	720	6.8-	2	0	0	26	1
TOTAL PART V FIRE INCIDS	1	0	6	8	25.0-	0	0	0	0	0
***** DEPARTMENT TOTALS	108	109	1365	1301	4.9	7	0	0	96	8

\*\* LAW ENFORCEMENT USE ONLY \*\*

M16316300

LPS-065

96

REPORT DATE/TIME 01/15/87 21.30  
 PERIOD 12/01/86 THRU 12/31/86

WATERFORD TWP  
 MONTHLY SUMMARY OF OFFENSES

ORI MI6316300

PAGE 1  
 REPORT LPS-065

*----- DESCRIPTION -----*	CURRENT	LAST YR	CURRENT	LAST	YEAR TO DATE	CUR PD	ARRESTS	Y-T-D	ARRESTS
	PERIOD	SAME PD	Y-T-D	Y-T-D	PERCENT CHANGE	ADULT	JUVENILE	ADULT	JUVENILE
ASSAULT (AGGRAVATED)	0	0	2	1	100.0	0	0	0	0
BURGLARY	0	0	0	1	100.0-	0	0	0	0
LARCENY	2	0	9	20	55.0-	0	0	0	0
MOTOR VEHICLE THEFT	0	0	0	2	100.0-	0	0	0	0
ARSON	0	0	1	1	0.0	0	0	0	0
TOTAL PART I INCIDENTS	2	0	12	25	52.0-	0	0	0	0
ASSAULT (NON-AGGRAVATED)	0	0	0	2	100.0-	0	0	1	0
FRAUD	1	0	1	1	0.0	0	0	0	0
EMBEZZLEMENT	0	0	0	1	100.0-	0	0	0	0
STOLEN PROPERTY	0	0	0	1	100.0-	0	0	0	0
VANDALISM	0	0	4	2	100.0	0	0	0	0
NARCOTIC DRUG LAWS	0	2	1	3	66.7-	0	0	0	0
OPER UNDER THE INFLUENCE	14	9	136	186	26.9-	14	0	135	0
LIQUOR LAWS	0	0	1	1	0.0	0	0	1	0
DISORDERLY CONDUCT	1	0	2	1	100.0	1	0	2	0
LOCAL, STATE, FED. OFFENSES	0	2	5	5	0.0	0	0	2	0
TOTAL PART II INCIDENTS	16	13	150	203	26.1-	15	0	141	0
TOTAL PART I AND II	18	13	162	228	28.9-	15	0	141	0
RUNAWAY/RECOVERED RUNAWAY	0	0	0	1	100.0-	0	0	0	0
ALL OTHER JUV COMPLAINTS	1	0	1	1	0.0	0	0	0	0
WARRANTS	2	1	17	27	37.0-	2	0	19	0
TRAFFIC ACC/PROP DAMAGE	2	0	25	25	0.0	1	0	1	0
TRAFFIC ACC/PERS INJURY	2	0	7	8	12.5-	0	0	0	0
WATERCRAFT ACC/PROP DAMAG	0	0	8	3	166.7	0	0	0	0
WATERCRAFT ACC/PERS INJUR	0	0	2	4	50.0-	0	0	0	0
WATERCRAFT COMPLAINTS	0	1	18	36	50.0-	0	0	0	0
ALL OTHER VEH COMPLAINTS	0	0	28	22	27.3	0	0	7	3
SICK / INJURY COMPLAINTS	0	0	4	3	33.3	0	0	0	0
MISC PART III COMPLAINTS	5	4	55	52	5.8	0	0	0	0
TOTAL PART III INCIDENTS	12	6	165	182	9.3-	3	0	27	3
***** DEPARTMENT TOTALS	30	19	327	410	20.2-	18	0	168	3

\*\* LAW ENFORCEMENT USE ONLY \*\*

MI6316300 LPS-065

PAGE 1

97

REPORT DATE/TIME 01/15/87 21.30  
 PERIOD 12/01/86 THRU 12/31/86

WEST BLOOMFIELD TWP  
 MONTHLY SUMMARY OF OFFENSES

ORI MI6316300

PAGE 1  
 REPORT LPS-065

***** DESCRIPTION *****	CURRENT PERIOD	LAST YR SAME PD	CURRENT Y-T-D	LAST Y-T-D	YEAR TO DATE PERCENT CHANGE	CUR PD ADULT	ARRESTS JUVENILE	Y-T-D ADULT	ARRESTS JUVENILE
LARCENY	0	1	15	14	7.1	0	0	0	0
ARSON	0	0	5	4	25.0	0	0	0	0
TOTAL PART I INCIDENTS	0	1	20	18	11.1	0	0	0	0
ASSAULT (NON-AGGRAVATED)	0	0	1	2	50.0-	0	0	0	0
VANDALISM	0	0	1	2	50.0-	0	0	0	0
FAMILY AND CHILDREN	1	0	1	0	+	0	0	0	0
OPER UNDER THE INFLUENCE	1	4	10	36	72.2-	1	0	11	0
LIQUOR LAWS	0	0	0	1	100.0-	0	0	0	0
LOCAL, STATE, FED. OFFENSES	0	0	3	5	40.0-	0	0	0	0
TOTAL PART II INCIDENTS	2	4	16	46	65.2-	1	0	11	0
TOTAL PART I AND II	2	5	36	64	43.8-	1	0	11	0
WARRANTS	1	0	6	5	20.0	1	0	6	0
TRAFFIC ACC/PROP DAMAGE	1	1	3	7	57.1-	0	0	0	0
TRAFFIC ACC/PERS INJURY	0	0	2	2	0.0	0	0	0	0
WATERCRAFT ACC/PROP DAMAG	0	0	3	8	62.5-	0	0	0	0
WATERCRAFT ACC/PERS INJUR	0	0	3	1	200.0	0	0	0	0
WATERCRAFT ACC/FATALITIES	0	0	0	1	100.0-	0	0	0	0
WATERCRAFT COMPLAINTS	0	0	18	36	50.0-	0	0	0	0
ALL OTHER VEH COMPLAINTS	0	1	10	10	0.0	0	0	3	0
SICK / INJURY COMPLAINTS	0	0	1	7	85.7-	0	0	0	0
MISC PART III COMPLAINTS	3	1	46	72	36.1-	0	0	0	0
TOTAL PART III INCIDENTS	5	3	92	149	38.3-	1	0	9	0
TOTAL PART V FIRE INCIDS	0	0	1	1	0.0	0	0	0	0
***** DEPARTMENT TOTALS	7	8	129	214	39.7-	2	0	20	0

\*\* LAW ENFORCEMENT USE ONLY \*\*

MI6316300 LPS-065 PAGE 1

86

REPORT DATE/TIME 01/15/87 21.30  
 PERIOD 12/01/86 THRU 12/31/86

WHITE LAKE TWP  
 MONTHLY SUMMARY OF OFFENSES

ORI MI6316300

PAGE 1  
 REPORT LPS-065

***** DESCRIPTION *****	CURRENT PERIOD	LAST YR SAME PD	CURRENT Y-T-D	LAST Y-T-D	YEAR TO DATE PERCENT CHANGE	CUR PD ADULT	ARRESTS JUVENILE	Y-T-D ARRESTS		#
								ADULT	JUVENILE	
LARCENY	1	0	5	4	25.0	0	0	0	0	
ARSON	0	0	7	7	0.0	0	0	0	0	
TOTAL PART I INCIDENTS	1	0	12	11	9.1	0	0	0	0	
ASSAULT (NON-AGGRAVATED)	0	0	0	1	100.0-	0	0	0	0	
FRAUD	0	0	1	0	+	0	0	0	0	
VANDALISM	0	0	4	3	33.3	0	0	0	0	
OPER UNDER THE INFLUENCE	0	1	10	11	9.1-	0	0	10	0	
LIQUOR LAWS	0	0	1	0	+	0	0	1	0	
LOCAL, STATE, FED. OFFENSES	0	0	0	1	100.0-	0	0	0	0	
TOTAL PART II INCIDENTS	0	1	16	16	0.0	0	0	11	0	
TOTAL PART I AND II	1	1	28	27	3.7	0	0	11	0	
RUNAWAY/RECOVERED RUNAWAY	0	0	0	1	100.0-	0	0	0	0	
WARRANTS	3	0	6	5	20.0	3	0	6	0	
TRAFFIC ACC/PROP DAMAGE	0	1	8	13	38.5-	0	0	0	0	
TRAFFIC ACC/PERS INJURY	0	0	2	5	60.0-	0	0	0	0	
WATERCRAFT ACC/PROP DAMAG	0	0	2	0	+	0	0	0	0	
WATERCRAFT ACC/PERS INJUR	0	0	0	1	100.0-	0	0	0	0	
WATERCRAFT COMPLAINTS	0	0	13	5	160.0	0	0	0	0	
ALL OTHER VEH COMPLAINTS	0	0	4	2	100.0	0	0	3	0	
SICK / INJURY COMPLAINTS	0	0	2	1	100.0	0	0	0	0	
MISC PART III COMPLAINTS	2	3	30	33	9.1-	0	0	0	0	
TOTAL PART III INCIDENTS	5	4	67	66	1.5	3	0	9	0	
***** DEPARTMENT TOTALS	6	5	95	93	2.2	3	0	20	0	

\*\* LAW ENFORCEMENT USE ONLY \*\*

MI6316300

LPS-065

PAGE 1

66