

# THING THINGS

# OLD PHOTO PROGRAM

*This is part two in a two part series on The Charles A Carpenter Farm*

This Carpenter Farm was located on both sides of Joslyn Road at Silverbell Road It encompassed 750 acres running to the shore of Judah Lake on the west

The Carpenter farmhouses were built on the west side of Joslyn with the barns being built primarily on the east side of Joslyn This column will tell the story of those Carpenter houses

A total of six houses were built on the farm during the 110 years the Carpenters owned it It started with the log cabin where the Charles A Carpenters lived while the first house was being built just south of the Carpenter School on Joslyn in the mid 1840s

In the mid 1860s Charles A Carpenter set out to build his mansion a symbol of success for the early pioneer settlers in the midwest of those days The large house with its classic tall windows and mansard roof was elaborate for Orion Township of that day

It had a carriage house at the rear of the property and a tenant house to the north of the main house It would later be occupied by Julius Carpenter's son Oscar and his wife Ella Carpenter Oscar's son Clarence was the last Carpenter to occupy the house in 1954

In 1885 an even more elaborate house was built for Mr and Mrs Julius Carpenter just to the north at 3700 Joslyn It had a tile mansard roof with two elaborate towers at each end Wrought iron decoration graced the roof line of the house and porch

It was occupied by the Carpenter family until the farm was sold for a subdivision development in 1954 The last family occupants were Mr and Mrs Byron Carpenter and daughter Char

lotte Byron Carpenter's six sons also grew up in this house which was destroyed by fire in the 1980s

A house with carriage house still exists today at 3740 Joslyn

The last Carpenter house was built by Mr and Mrs Charles Carpenter in the mid 1950s Charles is Byron Carpenter's son and he and his family still reside in this ranch style house just north of Carpenter School at 3500 Joslyn

Carpenter School was built in 1928 on property donated by the Carpenters thus its name It was a solid two room brick school with a large central hall Children from that farm area in grades first through eighth were educated there for many years

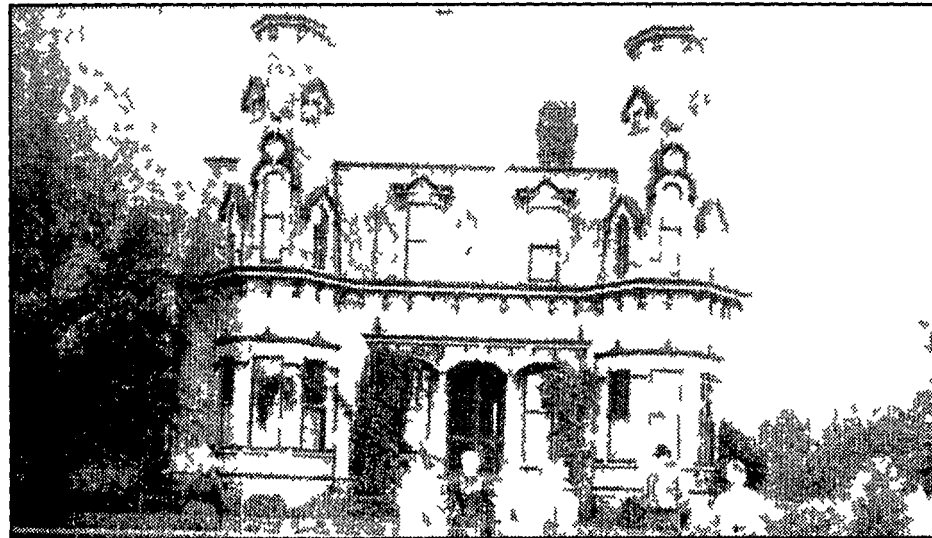
It became part of the Lake Orion Consolidated School District in the early 1950s and a new school was built to the west of it The original building was torn down in 1993

Byron Carpenter was the last of the family to actively pursue farming on this historic property In 1954 he and other family members decided to sell the Carpenter Farm to Mr and Mrs John Bell for a subdivision development Much of the Carpenter property is now the Judah Lake Subdivision on Joslyn

*The Carpenter Family history and images are courtesy of Charlotte Carpenter Brown*



Above this photo shows the two front parlors in the Charles A Carpenter house circa the 1880s



Top left this house was built by Charles A Carpenter in the mid 1860s, and still exists at 3740 Joslyn Road It is well preserved as is the original carriage house at the rear of the property

Left this is the Carpenter house built for Mr and Mrs Julius Carpenter in 1885 Shown in the front yard are (left to right) Percis Eames Carpenter, Minnie Carpenter Elizabeth Rolison, Julius C Carpenter (with hat at bay window) Oscar Carpenter Charles A Carpenter Jr (in the buggy) and Maria C Carpenter

... could hold

Acupuncture