



Oakland
County
Infirmary

View of
Court

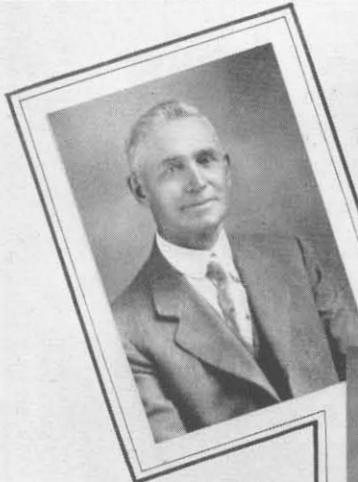


Royal Oak Headquarters





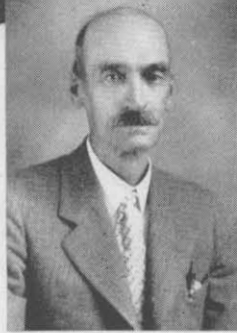
COMMISSION AND STAFF INFIRMARY



F. J. Lessiter
Poor Commissioner



H. G. Hayes
Poor Commissioner



E. D. Spooner
Poor Commissioner



George Schram
Superintendent



Mrs. George Schram
Matron



Dr. J. J. Bird
Physician for Poor Commission



The Oakland County Infirmary

*Where Old and Infirm are Given
Best of Attention.*

THE department of Superintendents of Poor has had a busy year. The Infirmary is one of the finest of its kind in Michigan. A finely equipped hospital is operated in connection so that every care is extended to all who are brought there for treatment.

The branch office at Royal Oak has proven a success. Superintendent Hayes is in charge. Supplies for this branch are supplied through the Central Storage Plant, owned and operated by the County.

The Infirmary is the home, at present, of 107 males and 37 females of nearly all nationalities.

There is employed at the County Home: 1 Keeper, 1 Matron, 3 Waiters, 1 Cook, 1 Farmer, 1 Janitor, 1 Janitoress and 1 Officer.

In the Hospital there is 7 nurses and one full time Physician, who takes care of patients in the Hospital and also anywhere in the county. The Hospital is filled to capacity nearly all the time. At the present time there are: 29 men, 11 women, and 1 baby.

The office in the Court House Annex has extended temporary relief to 760 new cases, besides cases held over from last year, consisting of food, fuel, clothing, transportation, medical, rent, etc. We have a branch office in Royal Oak where we have extended aid to the needy. Also are operating a county store in connection.

In connection with the office of the Superintendent of Poor is the Oakland County Exchange Bureau. This office is for the purpose of registering all cases from all of the different organizations in the county, so as to eliminate over-lapping—that two or more organizations do not extend aid to the same person.

The number of cases that apply for Hospital care is growing larger every year. Patients are sent to the University of Michigan, St. Mary's Hospital and a number of others. When patients are sent to Hospitals the managements are requested to notify the office. When the patient is convalescent and able to be moved they are transferred to our County Hospital at the Infirmary, where they are taken care of by nurses and doctory until able to take care of themselves.

The Infirmary is the last word in completeness for the buildings of its kind and was erected after a wide search of institutions in other states by the committee, taking into consideration, durability, comfort, economy in operation, sanitation, etc.

The building has abundant sleeping apartments for men and women, two dining rooms, laundry, heating plant and ice plant. The kitchen equipment is the least in point of utensils, every detail having been worked out after careful investigation, with a view of erecting a permanent institution that would answer the requirements for years to come.

The Board comprises three members: E. D. Spooner, F. J. Lessiter and H. G. Hayes.



INFIRMARY NOOKS



Mens Ward



Sun Porch



Ladies Dining Room



Kitchen



Ladies Rest Room



Mens Lounging Room



Corner of Dormitory



Sun Porch - Mens Division