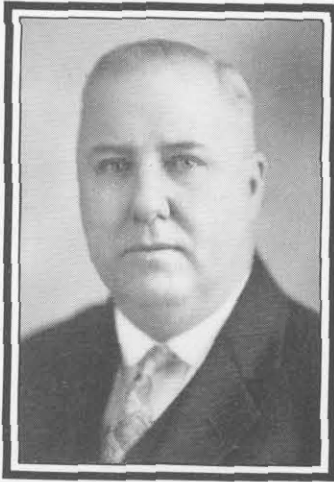


The Sheriff—County Jail



FRANK SCHRAM
Sheriff



SEYMOUR D. ADAMS
Under Sheriff

IN decided contrast to the old Oakland County jail in Pontiac, which was built in 1884 and accommodated but 48 prisoners, is the new jail building on Wayne Street, Pontiac, with its very modern equipment and sanitation.

The increase in population in Oakland County, due to its proximity to Wayne County and the fact that the city of Pontiac is thoroughly industrial, necessitated the abolishing of the old building, which was inadequate, and the construction of the new jail. In 1919 the County Board of Supervisors passed a resolution for its construction and in 1922 it was ready for occupancy.

It is a five story structure of stone and steel, and it has a full basement. On the first floor is the office of Sheriff Frank Schram, Under Sheriff Seymour D. Adams, deputies, turnkeys, the business office and a justice court. The living quarters of the sheriff are in the north end of this floor.

The second, third and fourth floors are devoted entirely to cell blocks. The fifth floor houses the identification bureau, the trustees' quarters, the jail kitchen and the sheriff's dining room.


In the basement is the heating plant for the building, which includes automatic stokers which are expected to decrease the cost of heating the building. Also in the basement is the garage, a laundry, a storage room and accessories to the heating plant.

At the present time, since the completion of the cell blocks on the second and third floors, accommodations are available for 232 prisoners. The women's quarters can accommodate 32 prisoners while there is room for 200 men in the cell blocks.

The personnel of the department also has necessarily been increased as the duties of the officers of law enforcement in the county multiply. At present there are 42 employes, including deputies, matrons, clerks, stenographers and guards. There are 19 uniformed deputies and 17 located at various points throughout the county in such a manner that they are available to instant call.

Heavy automobile traffic in Oakland County has made it necessary to keep eight motorcycle men in action during the spring, summer and fall.

Records show that a great percentage of the arrests made in the county are for violation of the prohibition law, and for violation of the motor laws. The activities of the deputies are directed to a large extent toward law breakers of this sort.



Aside from the traffic problem in the summer, a large number of drownings in Oakland County lakes makes it necessary for the department to have men ready at all times to answer calls of this nature and to have a complete pullmotor equipment.

The cement block plant has accommodated 693 prisoners between January 1, 1928, and August 1, 1928. These men are employed in the manufacture of cement blocks and other work about the Infirmary and T. B. Farm.

The number of meals served in the jail between January 1 and August 1 of this year is 107,387. From January 1, 1925, to August 1, 1928, 538,385 meals were served, not counting those at the cement block plant.

Between January 1, 1928, and August 1, 1928, a total of 2,905 prisoners were registered. But from January 1, 1925, to August 1, 1928, a total of 16,345 prisoners were registered.

Two Deputy Sheriffs are employed as turnkeys, working 24 hours alternately, one is always on duty, answering telephone calls and giving a great amount of information to the general public. They register all prisoners brought in and also the disposition of each case and keep a record. Each person is searched and all of their personal property is retained until they are released.

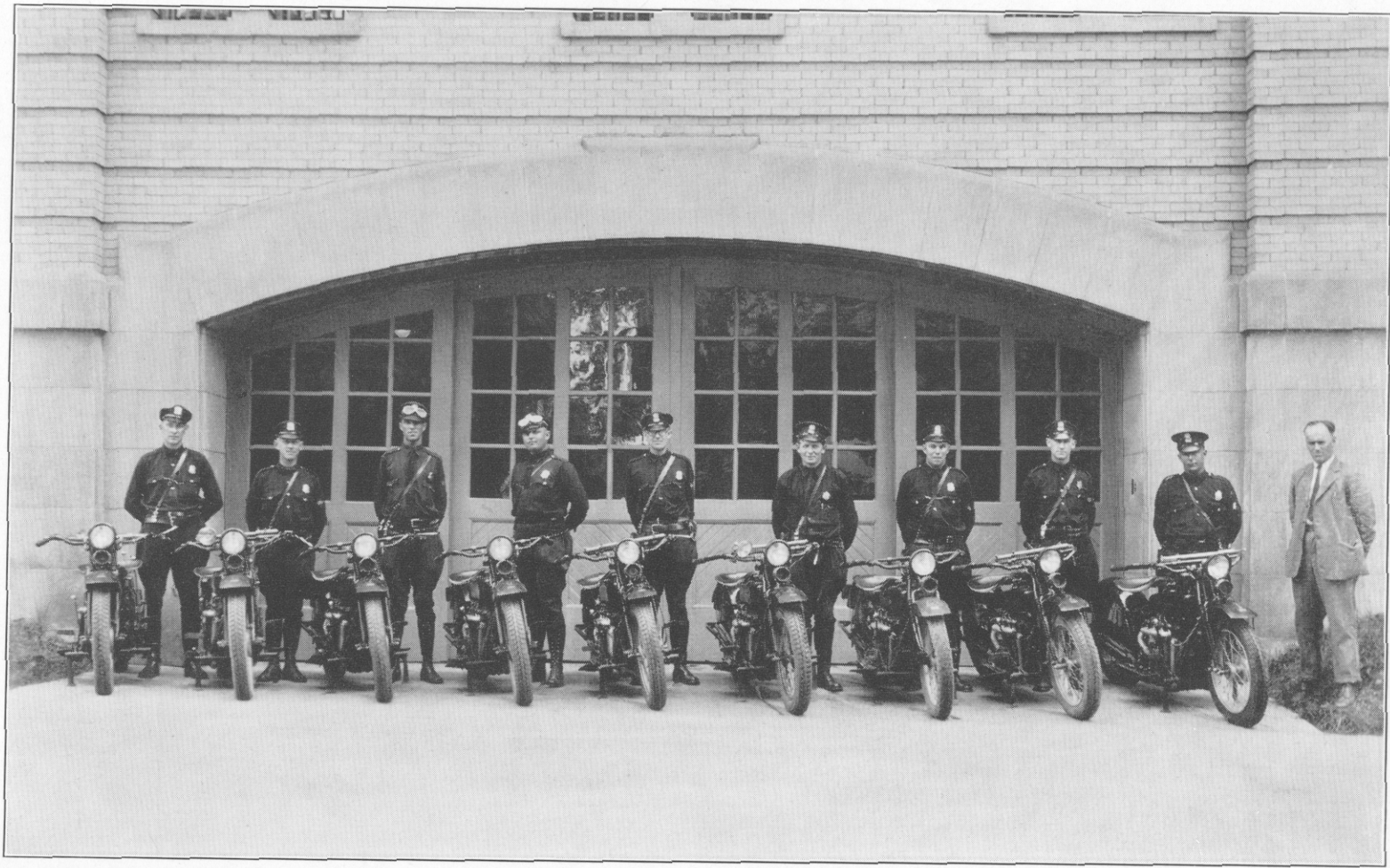
Under the State Dog Law, the delinquent dog taxes are to be collected through this Department. In order to make the tax collection more successful it was deemed advisable to make a house to house canvass requiring about forty Special Deputies. The township being so divided that every portion was covered; in this way we have obtained a much healthier condition in the County regarding the so-called "dog law."

In the identification bureau, for the seven months previous to August 1, 1928, 400 photos were taken, and 1400 finger prints, of which three copies were made. Of these, one copy was sent to Lansing, one to Washington and one filed in the bureau in the jail.

A total of 1,115 civil documents have been filed in seven months, while \$4,916.90 have been received from fees and other sources. This money is turned over to the County Treasurer.

It is the policy of the office to maintain a high class personnel which is most capable of serving the people of Oakland County to the greatest extent.

FRANK SCHRAM,
Sheriff.



MOTORCYCLE SQUAD—SHERIFF'S DEPARTMENT