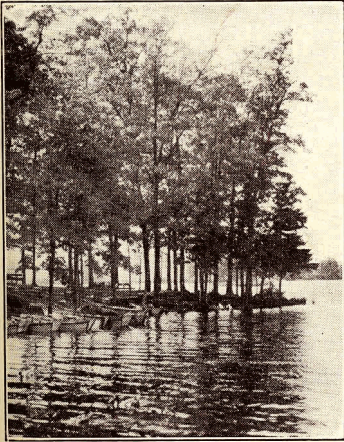


CASS LAKE



## OAKLAND COUNTY LAKES

†

WHEN General Lewis Cass first explored the territory now known as Oakland County, he exploded a theory advanced by earlier explorers that this section of the state was an impassable marsh, of no value to settlers. The earlier surveyors had attempted to enter the district through the lowlands to the north of Detroit and had turned back. Governor Cass found the way through and entered with amazement into the beautiful wooded, rolling country beyond. It was he who was first impressed with the beauty of the numerous lakes which were scattered all

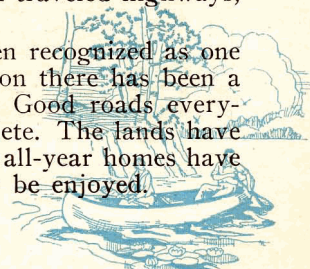
over the country-side, in the openings of the heavy forests and at the base of the gentle hills. He named Wing Lake, near what is now Birmingham, for a member of his party, and Cass Lake was named by the party in honor of the governor. Elizabeth Lake was named after Elizabeth Cass, the governor's wife.

The interest manifested by this early governor, whose name is written into Michigan geography as well as its history, has been growing and spreading since, until today Oakland is known as the Land o' Lakes among thousands of motorists who tour here from other states in order to enjoy the natural wonderland of the county.

Large and small, these lakes are scattered everywhere in Oakland except in the southeastern corner. They are more than 400 in number, of which about a dozen are known as the "large lakes". This group includes Orchard, Cass, Elizabeth, White, Pine, Walled, Maceday, Williams, Commerce, Union, the Straits, Orion and Lakeville lakes. These are scattered about the county, but they are merely the out-standing members of a very large family. Grading downward in size from these are such jewels of beauty as Sylvan, Otter, Angelus, Schoolhouse, Grass, Cedar Island, Round, Walnut, and score upon score of others.

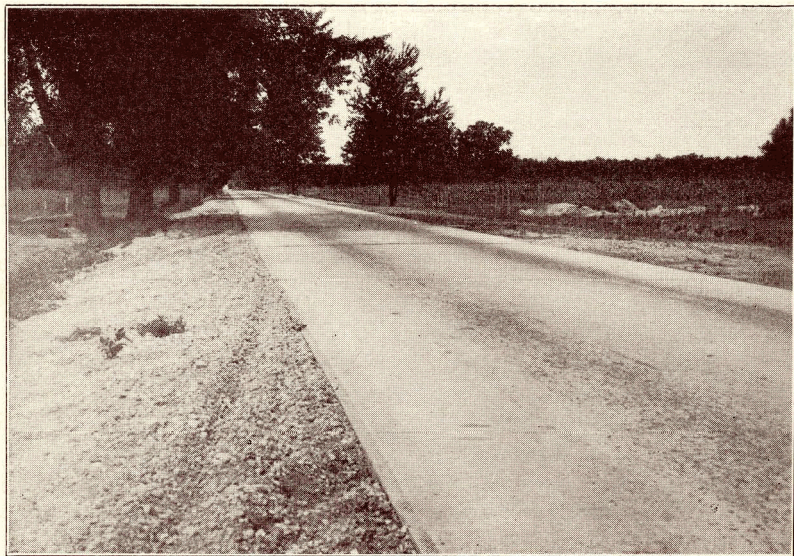
As they vary in size and kind, they vary too in accessibility. Most of the larger lakes lie upon concrete or good gravel highways so that they are sought by crowds. Others lie away from the main traveled highways, giving a delightful seclusion.

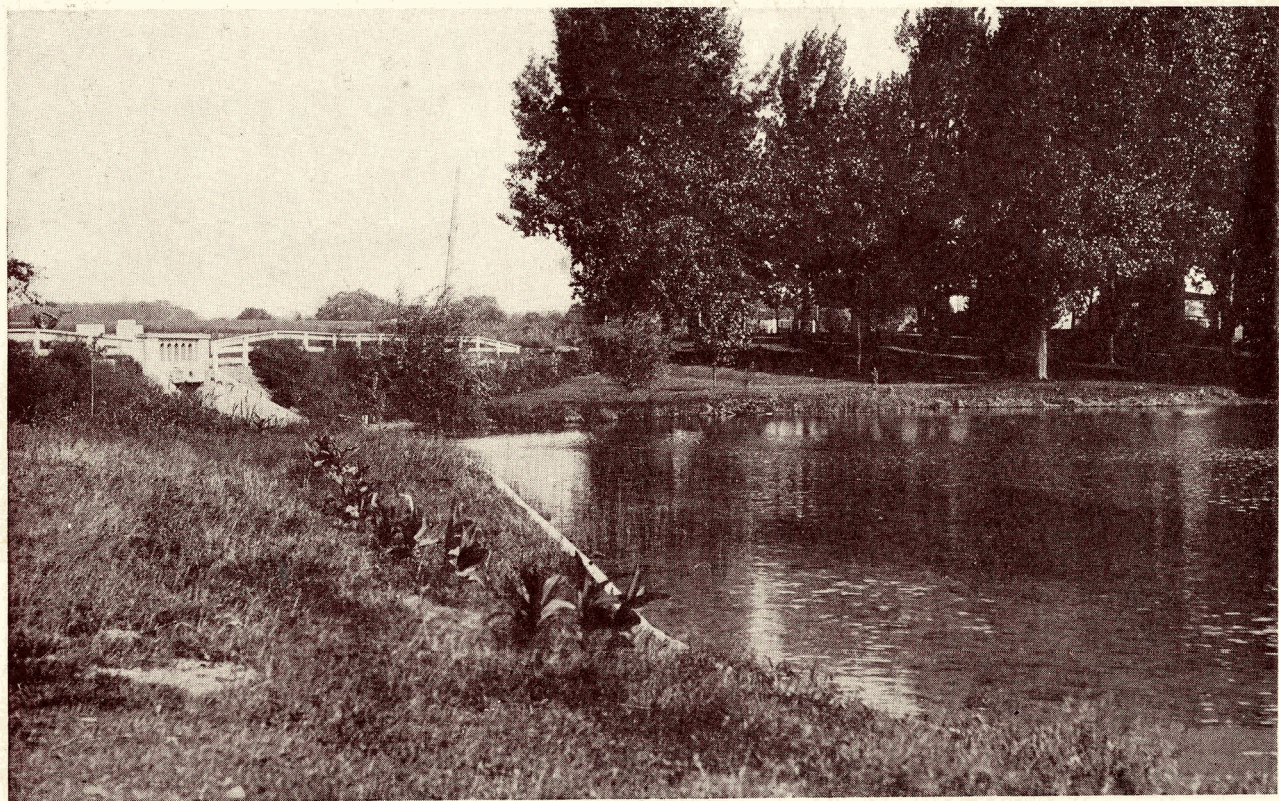
In recent years the beauty of the lakes has been recognized as one of the greatest assets of the county and for this reason there has been a surprisingly rapid development of the lake districts. Good roads everywhere are being built up to them if not already complete. The lands have been subdivided and thousands of summer cottages or all-year homes have been erected so that the full charm of the spots may be enjoyed.



In order to maintain the attraction of the lakes, too, there has been a concerted effort toward keeping them stocked with fish. The state fish hatcheries have supplied sportsmen in the county with millions of fry of perch, bass and blue-gills, which have been put into the lakes under proper supervision. Closed seasons at special times have been maintained so as not to prevent normal spawning, and the vigilance of game wardens has been increased, so that instead of a falling off in the sport in recent years there has been a decided improvement noticeable. This is a particular point of attraction to summer visitors, who find that they are almost certain to make a good catch in any of the lakes of the county.

In the development of the general plan of the county, recognition is being given to the importance of the lakes and bordering lands which a decade ago might have seemed incomprehensible. Properties that then were considered valueless from a private and community standpoint because they "were on the water" now are worth more than all the arable lands on the same farms. The public attitude toward the lakes is leading to increasing values there. Consequently the numerous tracts bordering on the lakes which have been presented to the public for parks are of constantly greater worth and they are being improved and made more readily accessible so that all the world may enjoy the Oakland lakes.





SCENE at UNION LAKE



SILVER LAKE



UNION LAKE



WATKIN'S LAKE



SCENE at LAKE ANGELUS





BRIDGE at LAKE ORION



BATHING BEACH at SILVER LAKE

## INDEX TO LAKES

†

(Names of lakes appear in alphabetical order. Towns are numbered on left of map from 1 to 5 inclusive and are six miles in width, corresponding to tiers of townships: ranges are numbered across the top of map from 7 to 11 inclusive, also corresponding to tiers of townships. To locate Bass Lake. Assuming that you are not familiar with the locations of townships by names, in fourth column find town 2 and in last column find range 8. On left side of map find T2N and on top of map R8E; follow to right of map and towards the bottom from these points until lines intersect in Commerce township. Then in third column find section 16, which definitely locates Bass Lake in section 16 of Commerce Township.)

LAKE	TOWNSHIP	SECTION	TOWN	RANGE
Angelus	Pontiac	6	3	10
Bailey	Oxford	35	5	10
Baker	Rose	5	4	7
Bald Eagle	Brandon	30	5	9
Bass	Commerce	16	2	8
Bevins	Holly	28	5	7
Big	Holly	28	5	7
Big	Springfield	28	4	8
Big Fish	Brandon	3	5	9
Bloat	Holly	3	5	7
Bogie	White Lake	33	3	8
Bridge	Springfield	14	4	8
Brooks	Addison	5	5	11
Buckell	Groveland	32	5	8
Buckhorn	Orion	11	4	10
Buckhorn	Rose	22	4	7
Bush	Holly	27	5	7
Bushman, Lower	Independence	4	4	9
Bushman, Upper	Independence	3	4	9
Cass	West Bloomfield	3	2	9
Cass	Holly	18	5	7
Cedar Island	White Lake	26	3	8
Cemetery	Independence	29	4	9
Childs	Milford	36	2	7
Clam	Oakland	9	4	11
Commerce	Commerce	15	2	8
Cooley	White Lake	36	3	8
Copmaconic	Holly	6	5	7
Cranberry	Oakland	3	4	11
Cranberry	Independence	17	4	9
Cranberry	White Lake	15	3	8
Crescent	Waterford	28	3	9
Crosby	White Lake	2	3	8
Crotched	Holly	23	5	7
Davis	Oxford	28	5	10
Davison	Brandon	2	5	9
Deer	Independence	19	4	9
Dennis	Orion	7	4	10
Dickison	Holly	29	5	7
Duck	Highland	11	3	7
Dunham	Highland	18	3	7



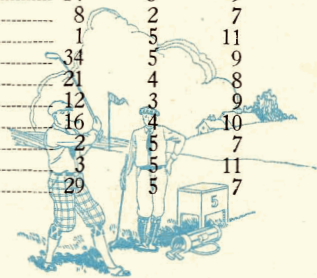
# Oakland Highways 1925

LAKE	TOWNSHIP	SECTION	TOWN	RANGE
Eagle	Waterford	3	3	9
Elizabeth	Waterford	34	3	9
Elliott	Rose	8	4	7
Fagan	Holly	10	5	7
Fish	Rose	32	4	7
Fish, Big	Brandon	3	5	9
Flemings	Independence	22	4	9
Forest	Bloomfield	8	2	10
Galloway	Pontiac	14	3	10
Geneva	Waterford	26	3	9
George	Addison	10	5	11
Gilbert	Bloomfield	21	2	10
Graham	Oakland	5	4	11
Grass	White Lake	17	3	8
Graves	Holly	14	5	7
Green	Holly	17	5	7
Green	West Bloomfield	8	2	9
Greens	Independence	32	4	9
Gulick	Independence	28	4	9
Handsome	Oxford	25	5	10
Hartwig	Groveland	9	5	8
Harvey	Highland	22	3	7
Highland	Highland	17	3	7
Hogback	Springfield	22	4	8
Honeywell	Milford	4	2	7
Horseshoe	Oxford	10	5	10
Horton	Groveland	7	5	8
Howe	Highland	32	3	7
Howland	Brandon	25	5	9
Hummer	Brandon	10	5	9
Indian	Oakland	6	4	11
Island	Bloomfield	18	2	10
Judah	Orion	32	4	10
Kelley	Rose	15	4	7
Kennedy	Holly	4	5	7
Kent	Milford	31	2	7
Kirby	Springfield	17	4	8
Lacey	Holly	35	5	7
Lakeville	Addison	22	5	11
Leonard	Highland	15	3	7
Lonesome	Orion	4	4	10
Long	Commerce	1	2	8
Long	White Lake	21	3	8
Long	Orion	1	4	10
Long	Rose	30	4	7
Long	Springfield	7	4	8
Long, Lower	Bloomfield	8	2	10
Long, Upper	Bloomfield	7	2	10
Loon	Waterford	11	3	9
Loon	Commerce	29	2	8
Lower Straits	Commerce	13	2	8



# Oakland Highways 1925

LAKE	TOWNSHIP	SECTION	TOWN	RANGE
Maceday	Waterford	6	3	9
Marl	Holly	14	5	7
Marl	Orion	3	4	10
Martin	Holly	3	5	7
Middle Straits	West Bloomfield	18	2	9
Miller Pond	Addison	15	5	11
Minnock	Holly	21	5	7
Moore	Milford	3	2	7
Morgan	Independence	36	4	9
Mud	Holly	11	5	7
Mud	Brandon	3	5	9
Mud	Orion	33	4	10
Mud	Orion	10	4	10
Mud	Holly	27	5	7
Murray	Highland	8	3	7
Narrin	Groveland	23	5	8
Oakland	Waterford	2	3	9
Orchard	West Bloomfield	10	2	9
Orion	Orion	11	4	10
Otter	Waterford	35	3	9
Oxbow	White Lake	23	3	8
Oyster	Holly	18	5	7
Parke	Independence	20	4	9
Penninsula	Highland	10	3	7
Perch	Rose	29	4	7
Perry	Brandon	21	5	9
Pettibone, Lower	Highland	27	3	7
Pettibone, Upper	Highland	15	3	7
Phipps	Groveland	15	5	8
Pickett	Milford	7	2	7
Pine	West Bloomfield	12	2	9
Pine	Oxford	31	5	10
Pine	Holly	18	5	7
Pleasant	Waterford	30	3	9
Pleasant	West Bloomfield	20	2	9
Powell	Oxford	27	5	10
Proud	Commerce	20	2	8
Ratalee	Rose	1	4	7
Reed	Commerce	14	2	8
Rice	Holly	34	5	7
Robinsons	White Lake	2	3	8
Round	Independence	2	4	9
Round	White Lake	35	3	8
School Lot	Rose	16	4	7
Scott	Waterford	14	3	9
Sears	Milford	8	2	7
Secord	Addison	1	5	11
Seymour	Brandon	34	5	9
Shiawasee	Springfield	21	4	8
Silver	Waterford	12	3	9
Sixteen	Orion	2	4	10
Slack	Holly	2	5	7
Slating	Addison	3	5	11
Spring	Holly	29	5	7



# Oakland Highways 1925

Page One Hundred-nine

LAKE	TOWNSHIP	SECTION	TOWN	RANGE
Spring	Holly	24	5	7
Spring	Commerce	27	2	8
Square	Bloomfield	6	2	10
Square	Oxford	28	5	10
Square	Orion	9	4	10
Stewart	Groveland	20	5	8
Stony	Oxford	16	5	10
Straits, Lower	Commerce	13	2	8
Straits, Middle	West Bloomfield	18	2	9
Straits, Upper	West Bloomfield	16	2	9
Strawberry	Holly	11	5	7
Sugden	White Lake	34	3	8
Sylvan	Waterford	36	3	9
Tamarack	Groveland	15	5	8
Tan	Oxford	28	5	10
Taylor	Rose	8	4	7
Teepie	White Lake	30	3	8
Tommy's	Orion	15	4	10
Tully	Brandon	30	5	9
Twin	Oakland	14	4	11
Union	West Bloomfield	6	2	9
Upper Bushman	Independence	3	4	9
Upper Pettibone	Highland	15	3	7
Upper Straits	West Bloomfield	16	2	9
Valley	Groveland	28	5	8
Vhay	Bloomfield	14	2	10
Voorheis	Orion	21	4	10
Walled	Novi	3	1	8
Walnut	West Bloomfield	24	2	9
Walters	Independence	13	4	9
Walton	Holly	13	5	7
Waterbury	Highland	23	3	7
Watkins	Waterford	15	3	9
Whipple	Independence	3	4	9
White	Highland	13	3	7
Williams	Waterford	8	3	9
Wilson	Holly	31	5	7
Wilson	Brandon	29	5	9
Wing	Bloomfield	29	2	10
Woodhull	Waterford	3	3	9

