



Poor Commissioners



F. L. LESSITER

FRANK HOYT



E. D. SPOONER

Oakland County Infirmary



THE new Oakland County Infirmary, dedicated February 12th, 1926, is a credit to the County and a testimonial to the Board of Supervisors, Building Committee and Superintendents of the Poor.

The Infirmary is the last word in completeness for the buildings of its kind and was erected after a wide search of institutions in other states by the committee who finally decided on the type of building, its equipment and furnishings, taking into consideration, durability, comfort, economy in operation, sanitation, etc.

The building has abundant sleeping apartments for men and women, two dining rooms, laundry, heating plant and ice plant. The kitchen equipment is the latest in point of utensils, every detail having been worked out after careful investigation, with a view of erecting a permanent institution that would answer the requirements for years to come.

The Oakland County Superintendents of Poor submit the report of their office from January 1, 1926 to October 1, 1926. The work of the office consists of the general and temporary relief fund. The general fund is the maintaining of the County Farm and Infirmary. The farm produces practically all of the food for the old at the home, such as potatoes, meat and all garden vegetables.

The Infirmary is the home at present for 92 old people, 60 male and 32 female, of nearly all nationalities. There is employed at the County Home: 1 Keeper, 1 Matron, 3 Waiters, 1 Cook and 1 farm hand. The office employs one full time Physician who takes care of the people at the Infirmary and also anywhere in the County as directed by the Superintendent.

The office in the Court House Annex has extended temporary relief to 463 new cases this year, besides the cases held over from last year, consisting of food, fuel, medical aid, rent and a few other minor necessities. Owing to the increase in the population of Oakland County in the last few years and so near to Wayne County, it was deemed advisable to establish an office in Royal Oak, where we have extended aid to 292 cases this year.

The number of cases that apply for Hospital care is growing larger every year. Patients are sent to the University of Michigan, St. Mary's Hospital and a number of others. When patients are sent to Hospitals the managements are requested to notify the office. When the patient is convalescent and able to be moved they are transferred to our County Hospital at the Infirmary, where they are taken care of by nurses and doctor until able to take care of themselves.

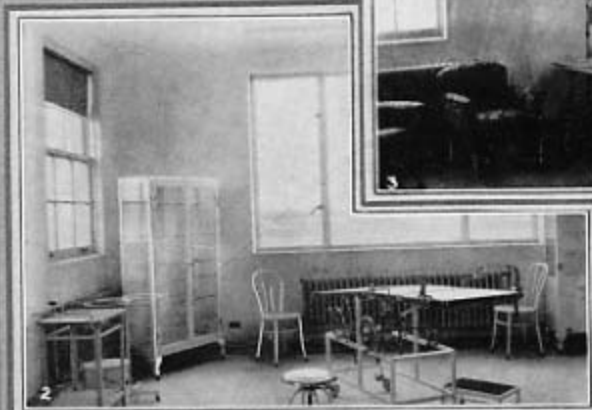
In connection with the office of Superintendents of Poor, is the Oakland County Exchange Bureau, maintained by one person, Mrs. Lucile Robertson. This office is for the purpose of registering all cases from all of the different organizations in the County so as to eliminate overlapping—that two or more organizations do not extend aid to the same persons.

The Board comprises three members, E. D. Spooner, F. J. Lessiter and F. A. Hoyt.

POOR COMMISSIONERS.



OAKLAND COUNTY INFIRMARY



Interior Views of the New Oakland
County Infirmary