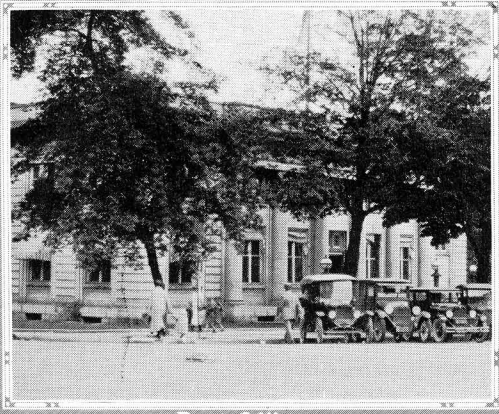
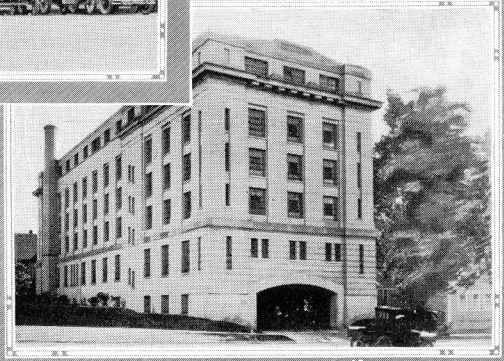


Oakland County Court House



Post Office



Oakland County Jail

City of Pontiac

FORMING the center from which radiate the many improved highways of the Oakland County system, is Pontiac, the county seat—famous since the days of the pioneers as a center of vehicle manufacture. Good roads and matters pertaining to good roads have always been of especial interest here, for Pontiac in the early days of its history devoted its industrial attention to the manufacture of buggies, wagons and road-carts. As the period of motor transportation came, the nature of Pontiac's manufactures changed with it and this city became the home of famous automobiles—the Oakland, the Cartercar, the General Motors truck, the Willys-Knight and Overland engines. These plants have grown so fast and prospered so well that they have brought to Pontiac many others—the Fisher Body Corporation, for instance, and a score of smaller factories mostly turning out automobile parts.

Pontiac is a city which now approaches 50,000 population. It is situated in the very heart of the lake country, with scenic attractions that are being recognized throughout the nation. Tourists are beginning to seek it out by thousands and the good roads of the county are being enjoyed by lovers of nature who come from homes as widely separated as the coasts.

They find here a city that has a broad vision of the future and is building up to it—a city of wide well-paved streets, beautiful homes, ample public services, schools that are far in advance of the average, and many churches marked by fine architecture and a splendid harmonious spirit among their people.

This city they find to be the abiding place of a spirit of co-operation, toleration and friendliness. Very few indeed have been the public projects that have failed in Pontiac because of lack of popular support. Whenever there is a public need revealed, public response takes care of it—whether that need be for a community fund to care for the needy, for a popular vote to put across some needed improvement, or a popular backing for some worthwhile enterprise.

Pontiac lies at the end of the wider Woodward avenue construction, which is opening up the world's greatest boulevard to its very doors. This is expected to be completed in another year and at that time it is believed the result will be swift growth of this community. Plans are now being completed for construction of a new 200 room hotel in the city to care for the travelers who are expected to flood into Pontiac as a result of the new highway.

In order to accommodate this increased traffic, also, the city has under way a project which includes widening the southern part of its main street, Saginaw street, to join with Woodward, and opening parallel streets which will help relieve the congestion and route through traffic around the business section of the city.

With this accomplished, Pontiac will be more than ever in the position to which she has proudly pointed for some years—the hub of the automobile manufacturing district. From this center will radiate improved trucking highways to every large automobile manufacturing center, rail lines and trolley lines, making Pontiac an ideal location for manufactories that seek to serve the automotive industry.

Located as it is, in a region that holds every natural appeal for home-seekers, and strategically situated from a manufacturer's point of view, while its seasonal attractions bring many here for vacation times—Pontiac has every right to expect that the next few years will bring her phenomenal growth.