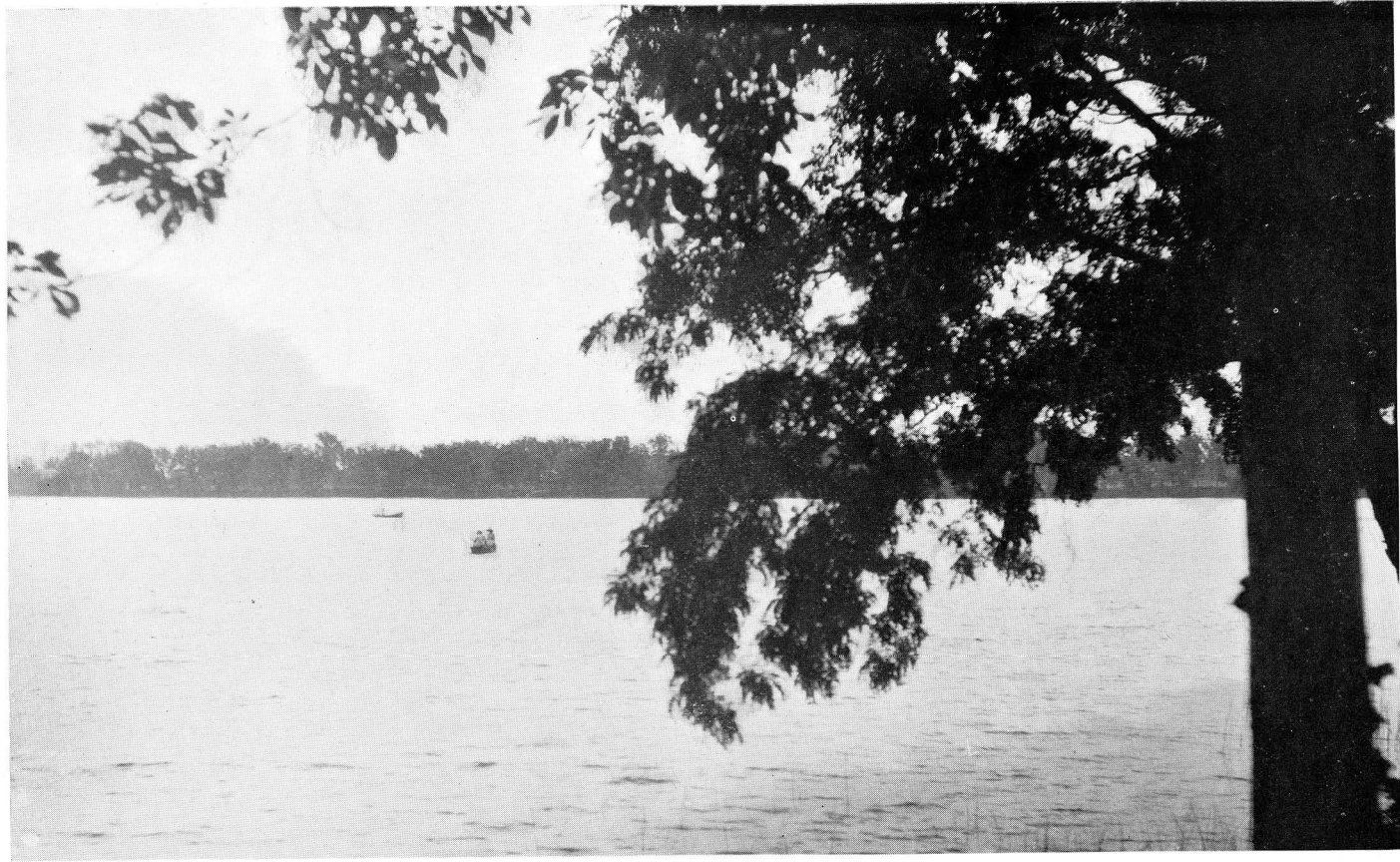




"Land o' the Lakes"



Orchard Lake

Oakland County Lakes

Man's greatest ambition is to own a little bit of old Mother Earth. Cities, hot, dusty and teeming with the commercial activity of life must necessarily demand the presence of the majority of its population during the day.

But when evening comes, and during those beautiful weekends of Spring, Summer and Autumn, what is more glorious than for the tired worker to bask among the sunlight, sparkling lakes of Oakland county.

And so leaving the dust of cities behind, he hops into his Rolls Royce or Rolls Rough, as the case may be and speeds o'er velvet roads to Michigan's greatest paradise of rest and quiet.

For no finer section of country can be found than that of the beautiful lake region of Oakland county. Myriad lakes, too numerous to mention, fresh, sparkling, with pure spring water, are dotted about in such profusion that it seems a divine hand must surely have tossed down from the skies an allotment intended for a whole state. Then, seeing the beautiful paradise created, decided to leave them all in Oakland county.

Years ago, Oakland county lakes were considered valueless and rather a drawback to properties on which they were situated. Now however, they are worth far more than all the arable land on which they are located.

General Lewis Cass, when first he explored Oakland County ridiculed the theory that this section of the country was an impassable marsh. Travelling through the beautiful wooded rolling country of Oakland County he was amazed at the natural beauty of the land.

One can imagine the historic trip made by Governor Cass and the thoughts that floated through his mind as he stood on the shores of Cass Lake, which was named by his party in his honor. Perhaps the astute governor saw the great future of Oakland county when in years to come thousands of men and

(Cont'd
to Page
37)



Bathing Beach, Walled Lake

women would revel in the sunshine and bathe in the cool, pure waters of Oakland's lakes.

The Governor named several of the lakes. Wing, in honor of one of his party, and Elizabeth after his wife, Elizabeth Cass.

Today the fame of Oakland's lakes has spread to the far corners of the country and annually thousands of motorists are attracted to Oakland county to enjoy the natural wonderland of the country.

In all more than 400 lakes dot the surface of Oakland county in all districts except the southeastern corner. About a dozen of these are known as the "large lakes." Included in this group are Orchard, Cass, Elizabeth, White, Pine, Walled, Maceday, Williams, Commerce, Union, the Straits, Orion and Lakeville lakes. These scattered throughout the county are only outstanding members of a system which includes the smaller but none the less beautiful lakes of Sylvan, Otter, Angelus, Schoolhouse, Grass, Cedar Island, Round, Walnut and hundreds of others.

One of the principal features of Oakland's lakes is their accessibility. All the larger ones lie upon concrete or good gravel highways and are therefore sought by the crowds. Others, on less travelled paths, form part of private estates or lake subdivisions, of which there are a large number.

During the past few years there has been a rapid development of the lake districts. Thousands of Pontiac and Detroit residents have built summer homes in this beautiful section and hundreds have built permanent all year round homes.

Through the efforts of members of the Oakland County Chapter of the Izaak Walton League, millions of fish fry have been planted in Oakland lakes. Last season, this organization planted more than 380,000 large mouthed bass; 13,600 small mouthed bass and 23,000,000 perch fry.

Fishing in Oakland lakes is strictly restricted to open seasons and the vigilance of game wardens together with the increasing regard for sportsmanship by residents and tourists both, has made a decided improvement instead of a depletion. This is a particular attraction to many summer visitors who find that they are almost certain to make a good catch in any of Oakland's lakes.

*Oakland
County
Lakes
(Cont'd
from
Page 35)*



Stony Lake



*Summer
Play-
ground*



Aviation Club

Index to Lakes

(Names of lakes appear in alphabetical order. Towns are numbered on left of map from 1 to 5 inclusive and are six miles in width, corresponding to tiers of townships. Ranges are numbered across the top of map from 7 to 11 inclusive, also corresponding to tiers of townships. To locate Bass Lake, assuming that you are not familiar with the locations of townships by names, in fourth column find town 2 and in last column find range 8, on left side of map find T2N and on top of map R8E; follow to right of map and towards the bottom from these points until lines intersect in Commerce township. Then in third column find section 16, which definitely locates Bass Lake in section 16 of Commerce Township.)

LAKE	TOWNSHIP	SECTION	TOWN	RANGE
Angelus.....	Pontiac	6	3	10
Bailey.....	Oxford	35	5	10
Baker.....	Rose	5	4	7
Bald Eagle.....	Brandon	30	5	9
Bass.....	Commerce	16	2	8
Bevins.....	Holly	28	5	7
Big.....	Holly	28	5	7
Big.....	Springfield	28	4	8
Big Fish.....	Brandon	3	5	9
Bloat.....	Holly	3	5	7
Bogie.....	White Lake	33	3	8
Bridge.....	Springfield	14	4	8
Brooks.....	Addison	5	5	11
Buckell.....	Groveland	32	5	8
Buckhorn.....	Orion	11	4	10
Buckhorn.....	Rose	22	4	7
Bush.....	Holly	27	5	7
Bushman, Lower.....	Independence	4	4	9
Bushman, Upper.....	Independence	3	4	9
Cass.....	West Bloomfield	3	2	9
Cass.....	Holly	18	5	7
Cedar Island.....	White Lake	26	3	8
Cemetery.....	Independence	29	4	9
Childs.....	Milford	36	2	7
Clam.....	Oakland	9	4	11
Commerce.....	Commerce	15	2	8
Cooley.....	White Lake	36	3	8
Copmaconic.....	Holly	6	5	7
Cranberry.....	Oakland	3	4	11

(Cont'd
to Page
43)



"Ray Cole's Retreat"

LAKE	TOWNSHIP	SECTION	TOWN	RANGE
Cranberry.....	Independence	17	4	9
Cranberry.....	White Lake	15	3	8
Crescent.....	Waterford	28	3	9
Crosby.....	White Lake	2	3	8
Crotched.....	Holly	23	5	7
Davis.....	Oxford	28	5	10
Davison.....	Brandon	2	5	9
Deer.....	Independence	19	4	9
Dennis.....	Orion	7	4	10
Dickison.....	Holly	29	5	7
Duck.....	Highland	11	3	7
Dunham.....	Highland	18	3	7
Eagle.....	Waterford	3	3	9
Elizabeth.....	Waterford	34	3	9
Elliott.....	Rose	8	4	7
Fagan.....	Holly	10	5	7
Fish.....	Rose	32	4	7
Fish, Big.....	Brandon	3	5	9
Flemings.....	Independence	22	4	9
Forest.....	Bloomfield	8	2	10
Galloway.....	Pontiac	14	3	10
Geneva.....	Waterford	26	3	9
George.....	Addison	10	5	11
Gilbert.....	Bloomfield	21	2	10
Graham.....	Oakland	5	4	11
Grass.....	White Lake	17	3	8
Graves.....	Holly	14	5	7
Green.....	Holly	17	5	7
Green.....	West Bloomfield	8	2	9
Greens.....	Independence	32	4	9
Gulick.....	Independence	28	4	9
Handsome.....	Oxford	25	5	10
Hartwig.....	Groveland	9	5	8
Harvey.....	Highland	22	3	7
Highland.....	Highland	17	3	7
Hogback.....	Springfield	22	4	8
Honeywell.....	Milford	4	2	7
Horseshoe.....	Oxford	10	5	10
Horton.....	Groveland	7	5	8
Howe.....	Highland	32	3	7
Howland.....	Brandon	25	5	9
Hummer.....	Brandon	10	5	9

*Index
to Lakes
(Cont'd
from
Page 41)*

*(Cont'd
to Page
45)*



White Lake

LAKE	TOWNSHIP	SECTION	TOWN	RANGE
Indian.....	Oakland.....	6	4	11
Island.....	Bloomfield.....	18	2	10
Judah.....	Orion.....	32	4	10
Kelley.....	Rose.....	15	4	7
Kennedy.....	Holly.....	4	5	7
Kent.....	Milford.....	31	2	7
Kirby.....	Springfield.....	17	4	8
Lacey.....	Holly.....	35	5	7
Lakeville.....	Addison.....	22	5	11
Leonard.....	Highland.....	15	3	7
Lonesome.....	Orion.....	4	4	10
Long.....	Commerce.....	1	2	8
Long.....	White Lake.....	21	3	8
Long.....	Orion.....	1	4	10
Long.....	Rose.....	30	4	7
Long.....	Springfield.....	7	4	8
Long, Lower.....	Bloomfield.....	8	2	10
Long, Upper.....	Bloomfield.....	7	2	10
Loon.....	Waterford.....	11	3	9
Loon.....	Commerce.....	29	2	8
Lower Straits.....	Commerce.....	13	2	8
Maceday.....	Waterford.....	6	3	9
Marl.....	Holly.....	14	5	7
Marl.....	Orion.....	3	4	10
Martin.....	Holly.....	3	5	7
Middle Straits.....	West Bloomfield.....	18	2	9
Miller Pond.....	Addison.....	15	5	11
Minnoek.....	Holly.....	21	5	7
Moore.....	Milford.....	3	2	7
Morgan.....	Independence.....	36	4	9
Mud.....	Holly.....	11	5	7
Mud.....	Brandon.....	3	5	9
Mud.....	Orion.....	33	4	10
Mud.....	Orion.....	10	4	10
Mud.....	Holly.....	27	5	7
Murray.....	Highland.....	8	3	7
Narrin.....	Groveland.....	23	5	8
Oakland.....	Waterford.....	2	3	9
Orchard.....	West Bloomfield.....	10	2	9
Orion.....	Orion.....	11	4	10
Otter.....	Waterford.....	35	3	9
Oxbow.....	White Lake.....	23	3	8
Oyster.....	Holly.....	18	5	7

*Index
to Lakes
(Cont'd
from
Page 43)*

*(Cont'd
to Page
47)*



Walter's Lake

LAKE	TOWNSHIP	SECTION	TOWN	RANGE
Parke.....	Independence	20	4	9
Penninsula.....	Highland	10	3	7
Perch.....	Rose	29	4	7
Perry.....	Brandon	21	5	9
Pettitbone, Lower.....	Highland	27	3	7
Pettibone, Upper.....	Highland	15	3	7
Phipps.....	Groveland	15	5	8
Pickett.....	Milford	7	2	7
Pine.....	West Bloomfield	12	2	9
Pine.....	Oxford	31	5	10
Pine.....	Holly	18	5	7
Pleasant.....	Waterford	30	3	9
Pleasant.....	West Bloomfield	20	2	9
Powell.....	Oxford	27	5	10
Proud.....	Commerce	20	2	8
Ratalee.....	Rose	1	4	7
Reed.....	Commerce	14	2	8
Rice.....	Holly	34	5	7
Robinsons.....	White Lake	2	3	8
Round.....	Independence	2	4	9
Round.....	White Lake	35	3	8
School Lot.....	Rose	16	4	7
Scott.....	Waterford	14	3	9
Sears.....	Milford	8	2	7
Secord.....	Addison	1	5	11
Seymour.....	Brandon	34	5	9
Shiawasee.....	Springfield	21	4	8
Silver.....	Waterford	12	3	9
Sixteen.....	Orion	16	4	10
Slack.....	Holly	2	5	7
Slating.....	Addison	3	5	11
Spring.....	Holly	29	5	7
Spring.....	Holly	24	5	7
Spring.....	Commerce	27	2	8
Square.....	Bloomfield	6	2	10
Square.....	Oxford	28	5	10
Square.....	Orion	9	4	10
Stewart.....	Groveland	20	5	8
Stony.....	Oxford	16	5	10
Straits, Lower.....	Commerce	13	2	8
Straits, Middle.....	West Bloomfield	18	2	9
Straits, Upper.....	West Bloomfield	16	2	9
Strawberry.....	Holly	11	5	7
Sugden.....	White Lake	34	3	8
Sylvan.....	Waterford	36	3	9

*Index
to Lakes
(Cont'd
from
Page 45)*

*(Cont'd
to Page
49)*

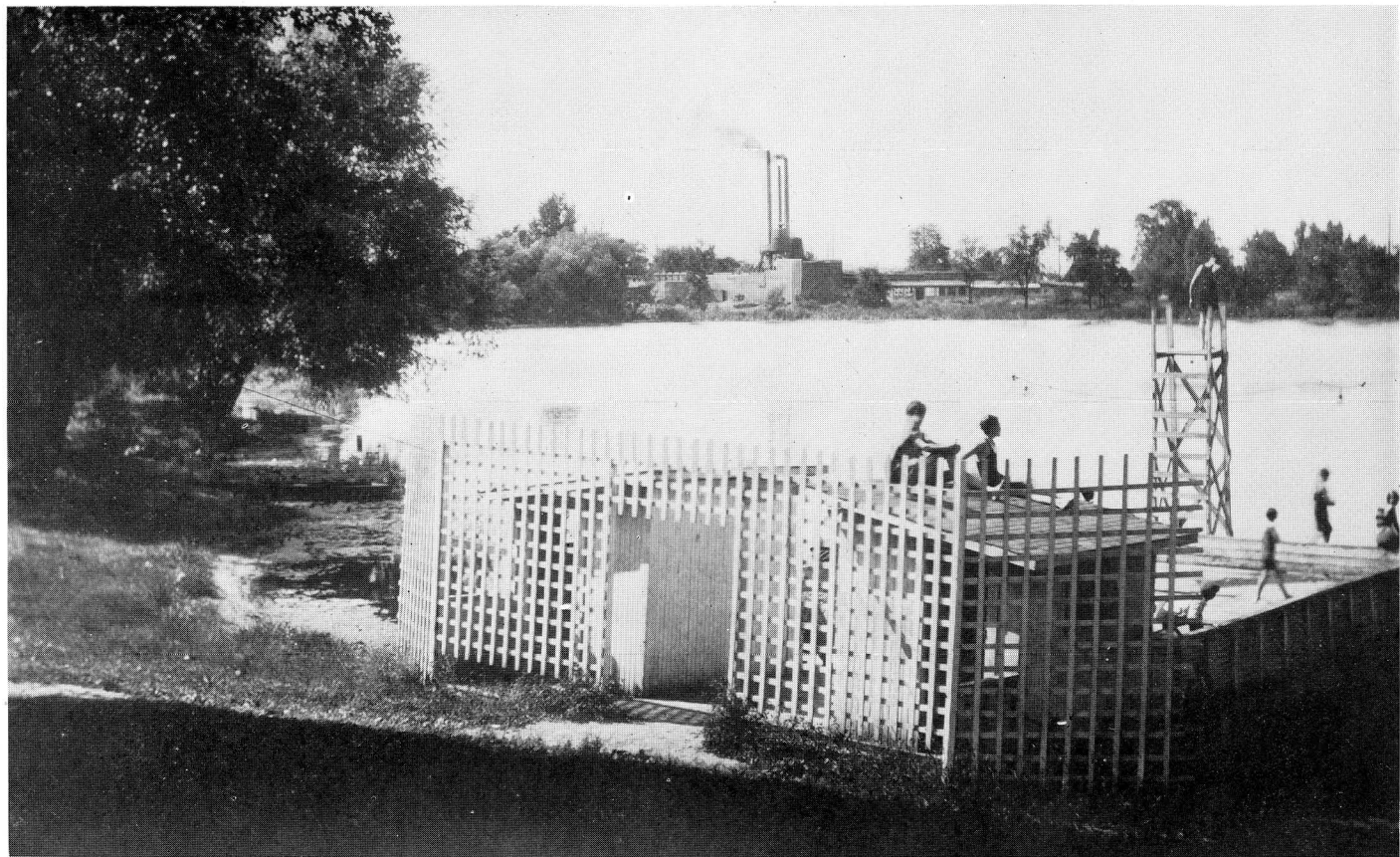


Lake Orion

LAKE	TOWNSHIP	SECTION	TOWN	RANGE
Tamarack.....	Groveland	15	5	8
Tan.....	Oxford	28	5	10
Taylor.....	Rose	8	4	7
Teepie.....	White Lake	30	3	8
Tommy's.....	Orion	15	4	10
Tully.....	Brandon	30	5	9
Twin.....	Oakland	14	4	11
Union.....	West Bloomfield	6	2	9
Upper Bushman.....	Independence	3	4	9
Upper Pettibone.....	Highland	15	3	7
Upper Straits.....	West Bloomfield	16	2	9
Valley.....	Groveland	28	5	8
Vhay.....	Bloomfield	14	2	10
Voorheis.....	Orion	21	4	10
Walled.....	Novi	3	1	8
Walnut.....	West Bloomfield	24	2	9
Walters.....	Independence	13	4	9
Walton.....	Holly	13	5	7
Waterbury.....	Highland	23	3	7
Watkins.....	Waterford	15	3	9
Whipple.....	Independence	3	4	9
White.....	Highland	13	3	7
Williams.....	Waterford	8	3	9
Wilson.....	Holly	31	5	7
Wilson.....	Brandon	29	5	9
Wing.....	Bloomfield	29	2	10
Woodhull.....	Waterford	3	3	9

*Index
to Lakes
(Cont'd
from
Page 47)*





Simonson Lake Scene at Holly



Elizabeth Lake



Wing Lake