

A&P Policy on Self-Service Meats: Display Least Attractive Side to Customer

An ancient adage advises: "Always put your best foot forward." Sounds like good advice. But A & P Food Stores has found it's not the best way to handle its self-service meat business. So A & P deliberately does the opposite in displaying self-service meats. This means that the least attractive side of the meat is displayed on top and the best side on the bottom of the package. Sounds odd, doesn't it, but that's for a moment. Have you ever taken a nice looking package of meat home and been disappointed when you opened it? You open the package and find a lot of bone, waste or gristle on the underside of the meat? That doesn't happen at A & P because the best side is always on the bottom, and you see the least attractive side when you buy the package.

'Good Old Days' Not So to Food Shoppers

What was so good about the "good old days"? Grandmother tells many a tale of days gone by when things were different. They certainly were. For one thing, Grandmother had less money with which to buy food than because Grandfather earned far less than the average working man of today. Grandmother's working day was longer; his work was harder without machines and labor-saving devices.

Generally, he worked six days a week. And Grandmother worked hard, too, running the house and caring for her family. She didn't have an automatic washer, a clothes dryer or a vacuum cleaner.

Grandmother's working day was longer; his work was harder without machines and labor-saving devices. Generally, he worked six days a week. And Grandmother worked hard, too, running the house and caring for her family. She didn't have an automatic washer, a clothes dryer or a vacuum cleaner.

Only A&P Sells Ann Page Foods

Every A & P customer is familiar with the Ann Page brand, which includes a great variety of food items ranging from certain desserts to chili sauce.

Not so well known, however, is the fact that these foods are manufactured in A & P's own factories and sold exclusively in A & P stores.

These manufacturing plants are operated by the Quaker Maid Company, an A & P subsidiary. One of them is in Terre Haute, Indiana, two in Brooklyn, N. Y., one in Brockton, N. Y., another at Bloomdale, Ohio.

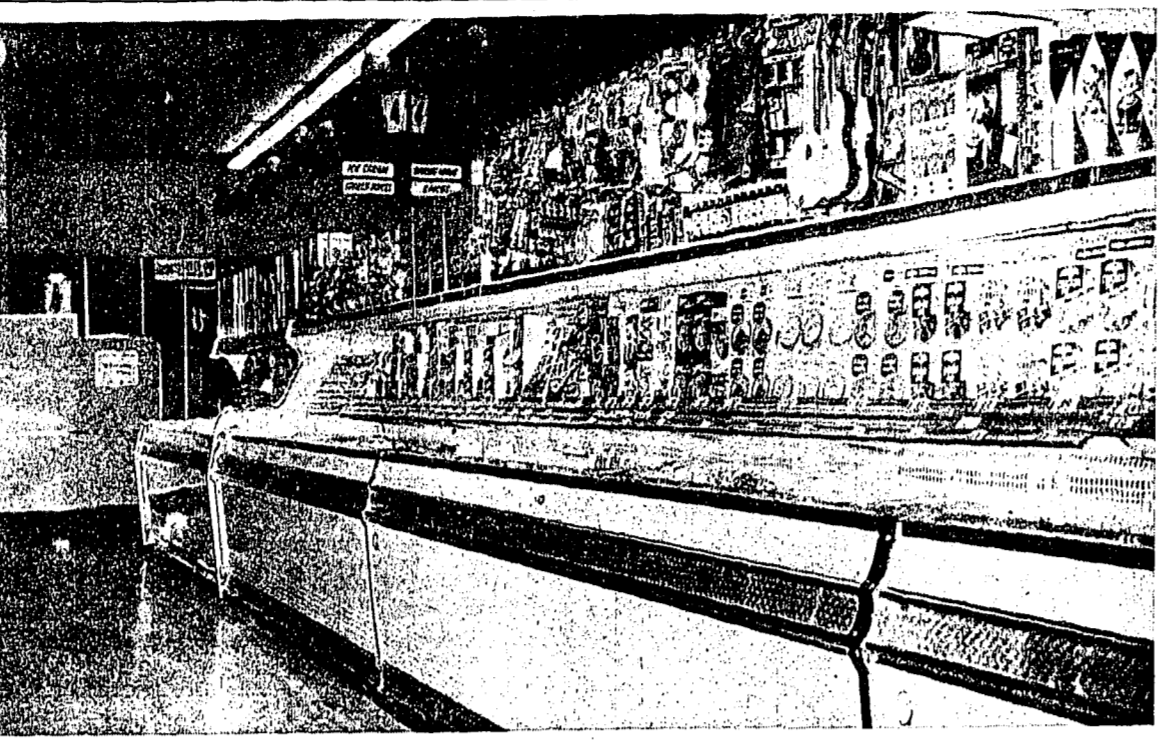
Shorts in this area are supplied from the Terre Haute plant, a modern six-story food processing operation. The bulk of the commodities processed are distributed under the Ann Page label, nationally known for unsurpassed quality.

A comparatively small volume is packed under such other brand labels as Iona and Sultana. All these brands are sold exclusively at A & P stores.

The plants produce every item A & P carries and retained the observation for several months. Any fault, however minor, which time develops is corrected through adjustments in the manufacturing process or change in the ingredients used.



Out of your car, into the store. A new 60-car parking lot faces the entrance of the new A&P store making it just a few steps from car to counter.



Hundreds of frozen food items are easy to select in these new refrigerated display cases.

find the same quality merchandise they bought at the A & P store where they formerly shopped.

The company uses its own super-right method of cutting and trimming to give the customer a uniform product that assures her the most for her money.

Each week hundreds of tons of meat products are shipped to the Detroit warehouse supplying Northville A & P super market. The company buys from local and nationally-known packers, and the meat is government inspected.

Super markets order beef by the front, hind, round, chuck or rib. Lamb is ordered by pork, hams and saddles while poultry comes by the half. All A & P poultry is oven-ready. A & P maintains a uniform standard of quality which makes it convenient for customers moving from one section of the country to another to find the same quality merchandise.

Self-service, of course, is the present trend in meat retailing, and the company has been converting rapidly to this method of operation by installing facilities similar to the equipment in the new A & P.

A new version of the old favorite macaroni and cheese is made by adding chipped beef. Its rich meat flavor blends well with the creamy macaroni and tangy cheese.

Each week hundreds of tons of meat products are shipped to the Detroit warehouse supplying Northville A & P super market. The company buys from local and nationally-known packers, and the meat is government inspected.

Super markets order beef by the front, hind, round, chuck or rib. Lamb is ordered by pork, hams and saddles while poultry comes by the half. All A & P poultry is oven-ready. A & P maintains a uniform standard of quality which makes it convenient for customers moving from one section of the country to another to find the same quality merchandise.

Self-service, of course, is the present trend in meat retailing, and the company has been converting rapidly to this method of operation by installing facilities similar to the equipment in the new A & P.

A new version of the old favorite macaroni and cheese is made by adding chipped beef. Its rich meat flavor blends well with the creamy macaroni and tangy cheese.

None Finer Than A&P's 3 Coffees

A & P's traditional pride in its coffee increases with the year. Coffee merchandisers now declare that there is "no finer coffee in any package at any price" than A & P's, Three Circle and Bokar.

These three brands together offer any other of the popular coffees available only in the local store.

Many persons today remember oranges as a rare, one-of-a-kind gift stuffed into the toe of a Christmas stocking.

But for Grandmother, better times were coming. In the early 1900's, as electric lights began to replace sputtering gas mantles, more attention was given to merchandising food items and more products were appearing on store shelves.

The A & P economy store was born at this time. It was operated by one or two men; there was no advertising; premium gifts were discontinued; expenses were pared to the bone, all in an effort to sell more goods at the lowest prices.

Today, Grandmother can walk into an A & P store and take her pick of more than 5,000 items of all kinds of food—meat, fish, poultry, canned, fresh and frozen fruits and vegetables, baked goods, dairy products, candy, staple groceries—all sorts.

The roasted coffee is packaged in the whole bean to maintain maximum freshness and then ground to suit the customer's method of brewing at the time of purchase.

Hundreds of thousands of families in America, the world's largest coffee-drinking nation, use one of A & P's three brands, the company estimates. These three blends cover the whole field of coffee taste and are distributed in a general way as follows:

Eight O'Clock, mild and mellow; Red Circle, medium-bodied, rich and full bodied; Bokar, high-flavored, vigorous and viney.

Years of research and experimentation in their laboratories have perfected the candies offered by A & P Food Stores.

The A & P practice of marking the price on food items has been widely hailed by consumers.

Any fault, however minor, which time develops is corrected through adjustments in the manufacturing process or change in the ingredients used.

Each week hundreds of tons of meat products are shipped to the Detroit warehouse supplying Northville A & P super market. The company buys from local and nationally-known packers, and the meat is government inspected.

Super markets order beef by the front, hind, round, chuck or rib. Lamb is ordered by pork, hams and saddles while poultry comes by the half. All A & P poultry is oven-ready. A & P maintains a uniform standard of quality which makes it convenient for customers moving from one section of the country to another to find the same quality merchandise.

Self-service, of course, is the present trend in meat retailing, and the company has been converting rapidly to this method of operation by installing facilities similar to the equipment in the new A & P.

A new version of the old favorite macaroni and cheese is made by adding chipped beef. Its rich meat flavor blends well with the creamy macaroni and tangy cheese.

Each week hundreds of tons of meat products are shipped to the Detroit warehouse supplying Northville A & P super market. The company buys from local and nationally-known packers, and the meat is government inspected.

Super markets order beef by the front, hind, round, chuck or rib. Lamb is ordered by pork, hams and saddles while poultry comes by the half. All A & P poultry is oven-ready. A & P maintains a uniform standard of quality which makes it convenient for customers moving from one section of the country to another to find the same quality merchandise.

Self-service, of course, is the present trend in meat retailing, and the company has been converting rapidly to this method of operation by installing facilities similar to the equipment in the new A & P.

A new version of the old favorite macaroni and cheese is made by adding chipped beef. Its rich meat flavor blends well with the creamy macaroni and tangy cheese.

Each week hundreds of tons of meat products are shipped to the Detroit warehouse supplying Northville A & P super market. The company buys from local and nationally-known packers, and the meat is government inspected.

Super markets order beef by the front, hind, round, chuck or rib. Lamb is ordered by pork, hams and saddles while poultry comes by the half. All A & P poultry is oven-ready. A & P maintains a uniform standard of quality which makes it convenient for customers moving from one section of the country to another to find the same quality merchandise.

Self-service, of course, is the present trend in meat retailing, and the company has been converting rapidly to this method of operation by installing facilities similar to the equipment in the new A & P.

A new version of the old favorite macaroni and cheese is made by adding chipped beef. Its rich meat flavor blends well with the creamy macaroni and tangy cheese.

Each week hundreds of tons of meat products are shipped to the Detroit warehouse supplying Northville A & P super market. The company buys from local and nationally-known packers, and the meat is government inspected.

Super markets order beef by the front, hind, round, chuck or rib. Lamb is ordered by pork, hams and saddles while poultry comes by the half. All A & P poultry is oven-ready. A & P maintains a uniform standard of quality which makes it convenient for customers moving from one section of the country to another to find the same quality merchandise.

Self-service, of course, is the present trend in meat retailing, and the company has been converting rapidly to this method of operation by installing facilities similar to the equipment in the new A & P.

A new version of the old favorite macaroni and cheese is made by adding chipped beef. Its rich meat flavor blends well with the creamy macaroni and tangy cheese.

Each week hundreds of tons of meat products are shipped to the Detroit warehouse supplying Northville A & P super market. The company buys from local and nationally-known packers, and the meat is government inspected.

Super markets order beef by the front, hind, round, chuck or rib. Lamb is ordered by pork, hams and saddles while poultry comes by the half. All A & P poultry is oven-ready. A & P maintains a uniform standard of quality which makes it convenient for customers moving from one section of the country to another to find the same quality merchandise.

Self-service, of course, is the present trend in meat retailing, and the company has been converting rapidly to this method of operation by installing facilities similar to the equipment in the new A & P.

A new version of the old favorite macaroni and cheese is made by adding chipped beef. Its rich meat flavor blends well with the creamy macaroni and tangy cheese.

Each week hundreds of tons of meat products are shipped to the Detroit warehouse supplying Northville A & P super market. The company buys from local and nationally-known packers, and the meat is government inspected.

Super markets order beef by the front, hind, round, chuck or rib. Lamb is ordered by pork, hams and saddles while poultry comes by the half. All A & P poultry is oven-ready. A & P maintains a uniform standard of quality which makes it convenient for customers moving from one section of the country to another to find the same quality merchandise.

Self-service, of course, is the present trend in meat retailing, and the company has been converting rapidly to this method of operation by installing facilities similar to the equipment in the new A & P.

A new version of the old favorite macaroni and cheese is made by adding chipped beef. Its rich meat flavor blends well with the creamy macaroni and tangy cheese.

Each week hundreds of tons of meat products are shipped to the Detroit warehouse supplying Northville A & P super market. The company buys from local and nationally-known packers, and the meat is government inspected.

Super markets order beef by the front, hind, round, chuck or rib. Lamb is ordered by pork, hams and saddles while poultry comes by the half. All A & P poultry is oven-ready. A & P maintains a uniform standard of quality which makes it convenient for customers moving from one section of the country to another to find the same quality merchandise.

Self-service, of course, is the present trend in meat retailing, and the company has been converting rapidly to this method of operation by installing facilities similar to the equipment in the new A & P.

A new version of the old favorite macaroni and cheese is made by adding chipped beef. Its rich meat flavor blends well with the creamy macaroni and tangy cheese.

Each week hundreds of tons of meat products are shipped to the Detroit warehouse supplying Northville A & P super market. The company buys from local and nationally-known packers, and the meat is government inspected.

Super markets order beef by the front, hind, round, chuck or rib. Lamb is ordered by pork, hams and saddles while poultry comes by the half. All A & P poultry is oven-ready. A & P maintains a uniform standard of quality which makes it convenient for customers moving from one section of the country to another to find the same quality merchandise.

Self-service, of course, is the present trend in meat retailing, and the company has been converting rapidly to this method of operation by installing facilities similar to the equipment in the new A & P.

A new version of the old favorite macaroni and cheese is made by adding chipped beef. Its rich meat flavor blends well with the creamy macaroni and tangy cheese.

Each week hundreds of tons of meat products are shipped to the Detroit warehouse supplying Northville A & P super market. The company buys from local and nationally-known packers, and the meat is government inspected.

Super markets order beef by the front, hind, round, chuck or rib. Lamb is ordered by pork, hams and saddles while poultry comes by the half. All A & P poultry is oven-ready. A & P maintains a uniform standard of quality which makes it convenient for customers moving from one section of the country to another to find the same quality merchandise.

Self-service, of course, is the present trend in meat retailing, and the company has been converting rapidly to this method of operation by installing facilities similar to the equipment in the new A & P.

A new version of the old favorite macaroni and cheese is made by adding chipped beef. Its rich meat flavor blends well with the creamy macaroni and tangy cheese.

Each week hundreds of tons of meat products are shipped to the Detroit warehouse supplying Northville A & P super market. The company buys from local and nationally-known packers, and the meat is government inspected.

Super markets order beef by the front, hind, round, chuck or rib. Lamb is ordered by pork, hams and saddles while poultry comes by the half. All A & P poultry is oven-ready. A & P maintains a uniform standard of quality which makes it convenient for customers moving from one section of the country to another to find the same quality merchandise.

Self-service, of course, is the present trend in meat retailing, and the company has been converting rapidly to this method of operation by installing facilities similar to the equipment in the new A & P.

A new version of the old favorite macaroni and cheese is made by adding chipped beef. Its rich meat flavor blends well with the creamy macaroni and tangy cheese.

Each week hundreds of tons of meat products are shipped to the Detroit warehouse supplying Northville A & P super market. The company buys from local and nationally-known packers, and the meat is government inspected.

Super markets order beef by the front, hind, round, chuck or rib. Lamb is ordered by pork, hams and saddles while poultry comes by the half. All A & P poultry is oven-ready. A & P maintains a uniform standard of quality which makes it convenient for customers moving from one section of the country to another to find the same quality merchandise.

Self-service, of course, is the present trend in meat retailing, and the company has been converting rapidly to this method of operation by installing facilities similar to the equipment in the new A & P.

A new version of the old favorite macaroni and cheese is made by adding chipped beef. Its rich meat flavor blends well with the creamy macaroni and tangy cheese.

Each week hundreds of tons of meat products are shipped to the Detroit warehouse supplying Northville A & P super market. The company buys from local and nationally-known packers, and the meat is government inspected.

Super markets order beef by the front, hind, round, chuck or rib. Lamb is ordered by pork, hams and saddles while poultry comes by the half. All A & P poultry is oven-ready. A & P maintains a uniform standard of quality which makes it convenient for customers moving from one section of the country to another to find the same quality merchandise.

Self-service, of course, is the present trend in meat retailing, and the company has been converting rapidly to this method of operation by installing facilities similar to the equipment in the new A & P.

A new version of the old favorite macaroni and cheese is made by adding chipped beef. Its rich meat flavor blends well with the creamy macaroni and tangy cheese.

Each week hundreds of tons of meat products are shipped to the Detroit warehouse supplying Northville A & P super market. The company buys from local and nationally-known packers, and the meat is government inspected.

Super markets order beef by the front, hind, round, chuck or rib. Lamb is ordered by pork, hams and saddles while poultry comes by the half. All A & P poultry is oven-ready. A & P maintains a uniform standard of quality which makes it convenient for customers moving from one section of the country to another to find the same quality merchandise.

Self-service, of course, is the present trend in meat retailing, and the company has been converting rapidly to this method of operation by installing facilities similar to the equipment in the new A & P.

A new version of the old favorite macaroni and cheese is made by adding chipped beef. Its rich meat flavor blends well with the creamy macaroni and tangy cheese.

Each week hundreds of tons of meat products are shipped to the Detroit warehouse supplying Northville A & P super market. The company buys from local and nationally-known packers, and the meat is government inspected.

Super markets order beef by the front, hind, round, chuck or rib. Lamb is ordered by pork, hams and saddles while poultry comes by the half. All A & P poultry is oven-ready. A & P maintains a uniform standard of quality which makes it convenient for customers moving from one section of the country to another to find the same quality merchandise.

Self-service, of course, is the present trend in meat retailing, and the company has been converting rapidly to this method of operation by installing facilities similar to the equipment in the new A & P.

A new version of the old favorite macaroni and cheese is made by adding chipped beef. Its rich meat flavor blends well with the creamy macaroni and tangy cheese.

Each week hundreds of tons of meat products are shipped to the Detroit warehouse supplying Northville A & P super market. The company buys from local and nationally-known packers, and the meat is government inspected.

Super markets order beef by the front, hind, round, chuck or rib. Lamb is ordered by pork, hams and saddles while poultry comes by the half. All A & P poultry is oven-ready. A & P maintains a uniform standard of quality which makes it convenient for customers moving from one section of the country to another to find the same quality merchandise.

Self-service, of course, is the present trend in meat retailing, and the company has been converting rapidly to this method of operation by installing facilities similar to the equipment in the new A & P.

A new version of the old favorite macaroni and cheese is made by adding chipped beef. Its rich meat flavor blends well with the creamy macaroni and tangy cheese.

Each week hundreds of tons of meat products are shipped to the Detroit warehouse supplying Northville A & P super market. The company buys from local and nationally-known packers, and the meat is government inspected.

Super markets order beef by the front, hind, round, chuck or rib. Lamb is ordered by pork, hams and saddles while poultry comes by the half. All A & P poultry is oven-ready. A & P maintains a uniform standard of quality which makes it convenient for customers moving from one section of the country to another to find the same quality merchandise.

Self-service, of course, is the present trend in meat retailing, and the company has been converting rapidly to this method of operation by installing facilities similar to the equipment in the new A & P.

A new version of the old favorite macaroni and cheese is made by adding chipped beef. Its rich meat flavor blends well with the creamy macaroni and tangy cheese.

Each week hundreds of tons of meat products are shipped to the Detroit warehouse supplying Northville A & P super market. The company buys from local and nationally-known packers, and the meat is government inspected.

Super markets order beef by the front, hind, round, chuck or rib. Lamb is ordered by pork, hams and saddles while poultry comes by the half. All A & P poultry is oven-ready. A & P maintains a uniform standard of quality which makes it convenient for customers moving from one section of the country to another to find the same quality merchandise.

Self-service, of course, is the present trend in meat retailing, and the company has been converting rapidly to this method of operation by installing facilities similar to the equipment in the new A & P.

A new version of the old favorite macaroni and cheese is made by adding chipped beef. Its rich meat flavor blends well with the creamy macaroni and tangy cheese.

Each week hundreds of tons of meat products are shipped to the Detroit warehouse supplying Northville A & P super market. The company buys from local and nationally-known packers, and the meat is government inspected.

Super markets order beef by the front, hind, round, chuck or rib. Lamb is ordered by pork, hams and saddles while poultry comes by the half. All A & P poultry is oven-ready. A & P maintains a uniform standard of quality which makes it convenient for customers moving from one section of the country to another to find the same quality merchandise.

Self-service, of course, is the present trend in meat retailing, and the company has been converting rapidly to this method of operation by installing facilities similar to the equipment in the new A & P.

A new version of the old favorite macaroni and cheese is made by adding chipped beef. Its rich meat flavor blends well with the creamy macaroni and tangy cheese.

Local Churches To Retell Story Of Christ's Birth

The happenings of that first Christmas Eve, when the church's organist-director Ray Ferguson and Sam Chiamar will play organ selections. The Carol choir and harp will present their traditional quartet and solo voices, will all take part in the program, which will be sung by the choir choir, "How Bright Appears the Morning Star", "Ah, Dear, Dear, Jesus", and "The Angel Gabriel". The harmony choir will sing "Carol of the Drum", "A Babe So Tender" and "Christ is Born, Little Infant King".

In Northville, the end of the Advent season will be celebrated at St. Paul's Evangelical Lutheran church in 8 and 10:30 a.m. worship. Evening services Sunday will be held at 6:30 and 8:30.

"Prayer Before Him", a program for children and adults is slated at 6:30, said the Rev. Ronald J. Pankow, pastor. Children of the Sunday school will sing Christmas songs and present recitations and prayers.

In addition to its regular masses Sunday, Our Lady of Lourdes church will have a special mass at midnight on Christmas Eve, said the Rev. John Wittstock, pastor.

Let's go shopping with Grandmother back in the early 1900's. The little store where she shopped was very different from the one she shopped in today.

Grandmother's working day was longer; his work was harder without machines and labor-saving devices. Generally, he worked six days a week. And Grandmother worked hard, too, running the house and caring for her family.

These manufacturing plants are operated by the Quaker Maid Company, an A & P subsidiary. One of them is in Terre Haute, Indiana, two in Brooklyn, N. Y., one in Brockton, N. Y., another at Bloomdale, Ohio.

Shorts in this area are supplied from the Terre Haute plant, a modern six-story food processing operation. The bulk of the commodities processed are distributed under the Ann Page label, nationally known for unsurpassed quality.

A comparatively small volume is packed under such other brand labels as Iona and Sultana. All these brands are sold exclusively at A & P stores.

The plants produce every item A & P carries and retained the observation for several months. Any fault, however minor, which time develops is corrected through adjustments in the manufacturing process or change in the ingredients used.

Each week hundreds of tons of meat products are shipped to the Detroit warehouse supplying Northville A & P super market. The company buys from local and nationally-known packers, and the meat is government inspected.

Super markets order beef by the front, hind, round, chuck or rib. Lamb is ordered by pork, hams and saddles while poultry comes by the half. All A & P poultry is oven-ready. A & P maintains a uniform standard of quality which makes it convenient for customers moving from one section of the country to another to find the same quality merchandise.

Self-service, of course, is the present trend in meat retailing, and the company has been converting rapidly to this method of operation by installing facilities similar to the equipment in the new A & P.

A new version of the old favorite macaroni and cheese is made by adding chipped beef. Its rich meat flavor blends well with the creamy macaroni and tangy cheese.

Each week hundreds of tons of meat products are shipped to the Detroit warehouse supplying Northville A & P super market. The company buys from local and nationally-known packers, and the meat is government inspected.

Super markets order beef by the front, hind, round, chuck or rib. Lamb is ordered by pork, hams and saddles while poultry comes by the half. All A & P poultry is oven-ready. A & P maintains a uniform standard of quality which makes it convenient for customers moving from one section of the country to another to find the same quality merchandise.

THE NOVI NEWS

Council Moves Toward Willowbrook Job

The absence of two village councilmen delayed action on all but one major item to come before the council Monday night, as the three members present decided to postpone most decisions until the entire council could discuss the issues.

The only major action was the approval of resolution number six setting up the sale of bonds totaling \$17,000 for financing the Willowbrook subdivision number one street paving project.

The resolution, drafted by the village's bonding attorneys, calls for application to the Michigan Municipal Finance Commission for permission to sell \$17,000 bonds against anticipated revenues in the form of a highway fund deficit of nearly \$800.

The council also tabled further discussion of a letter from the Michigan State Police regarding the village's participation in the State Police's traffic ticket program.

The council also tabled further discussion of a letter from the Michigan State Police regarding the village's participation in the State Police's traffic ticket program.

The council also tabled further discussion of a letter from the Michigan State Police regarding the village's participation in the State Police's traffic ticket program.

The council also tabled further discussion of a letter from the Michigan State Police regarding the village's participation in the State Police's traffic ticket program.

The council also tabled further discussion of a letter from the Michigan State Police regarding the village's participation in the State Police's traffic ticket program.

The council also tabled further discussion of a letter from the Michigan State Police regarding the village's participation in the State Police's traffic ticket program.

The council also tabled further discussion of a letter from the Michigan State Police regarding the village's participation in the State Police's traffic ticket program.

The council also tabled further discussion of a letter from the Michigan State Police regarding the village's participation in the State Police's traffic ticket program.

The council also tabled further discussion of a letter from the Michigan State Police regarding the village's participation in the State Police's traffic ticket program.

The council also tabled further discussion of a letter from the Michigan State Police regarding the village's participation in the State Police's traffic ticket program.

The council also tabled further discussion of a letter from the Michigan State Police regarding the village's participation in the State Police's traffic ticket program.

The council also tabled further discussion of a letter from the Michigan State Police regarding the village's participation in the State Police's traffic ticket program.

The council also tabled further discussion of a letter from the Michigan State Police regarding the village's participation in the State Police's traffic ticket program.



MOST POPULAR: Novi school children and their parents gathered around the jolly red-suited visitor after he arrived by post-drawn sleigh (see page 7, section 2). Each of his young admirers had very special requests.

University May Send Teaching Students to Novi

Novi schools may have a number of Wayne State University students teaching in the next semester, the school board learned at its regular monthly meeting last week.

JACQUES ALSO asked how Stone felt about teaching foreign languages in Novi in view of his earlier expressions of hope for initiating music and physical education.

Stone replied that he thought it was good. He said that in the past few years school systems have introduced foreign languages more than any other subject.

Board member David Fried pointed out that he would like to have art, music and physical education, but there just wasn't enough money. He said they couldn't have supplied any one of these three for the amount they were supplying Spanish.

When Mrs. Claude Aronson asked whether the Spanish program was being put out of the deficit budget, Jacques answered that the \$1,400 for the Spanish teacher was added to the \$27,000 deficit for this year.

Culbert also told the board that he was contacting a mechanical engineer to investigate a heating problem in the east wing of the Novi school.

HE ADDED that he had contacted the original architect of

It's Christmas!

We want to take this opportunity to wish you cheer... and to thank you for letting us serve you.

STEWART'S GIFTS and ART SUPPLIES

GREETINGS for Christmas

To all our valued friends... we wish that the blessings of Christmas will remain with you and yours, now and always.

FREYDL'S

LADIES' WEAR • CLEANERS • BOYS' & MEN'S WEAR

THE BIG SANTA BUCK AUCTION TONIGHT

THURSDAY, DECEMBER 21

ON MAIN STREET - DOWNTOWN NORTHVILLE

BIDDING WILL BEGIN PROMPTLY AT 9:00 P.M.

CLIFF HILL, Auctioneer

ONLY SANTA BUCKS

CAN BE USED TO BID ON A HOST OF VALUABLE PRIZES

GRAND PRIZE - PORTABLE TV

IT'S FUN... IT'S EXCITING!

BE THERE BEFORE THE BIDDING BEGINS



STRIKING RESEMBLANCE - Although Mrs. Arthur Basel was no contemporary of Leonardo da Vinci's "Mona Lisa", she bears a striking resemblance to the portrait of the famed lady which Miss Helen Gilbert is holding up for comparison. Mrs. Basel, Miss Gilbert, Mrs. B. William Second, left, and Mrs. William Crump, right, all have parts in the AAUW's "Art Comes to Life" program tonight.

Women of Masterpieces To Emerge from Canvas

Six famous paintings of women will live, and breathe and speak tonight (Thursday) when the American Association of University Women presents a novel Christmas program entitled "Art Comes to Life" at 7:45 p.m. in Plymouth Junior high school.

The women - da Vinci's "Mona Lisa", Whistler's "Mother", Van Gogh's "Woman of Arles", Rubens' "Le Chapeau de Paille", Picasso's "Girl in a Mirror" and "Angel of the Annunciation" - a Fifteenth century work - will be portrayed by members of the association. Embodiment of the central figure in each masterpiece will be Mrs. Sidney Cady, Mrs. John Haas, Mrs. John Barnes, Mrs. A. R. Basel, Mrs. T. F. Devereaux and Mrs. C. C. Wilcox. Word sketches about the artist and the painting will be read during each presentation. Script narration will be done by Mrs. J. R. Witwer, Mrs. Richard

Engaged

Mr. and Mrs. Paul Rackov, of 4185 Grand River, Novi, announce the engagement of their daughter, Arlene, to Robert Miller, son of Mr. and Mrs. Robert Miller, of Farmington.

Miss Rackov is a 1951 graduate of Northville high school. Mr. Miller graduated from high school in Atlanta in 1950 and is now stationed at Norfolk, Virginia with the United States Navy.

THE NOVI NEWS

Published every Thursday by The Northville Record, Inc., 101 N. Center St., Northville, Michigan.

Subscription Rates \$2.00 per year in Michigan \$4.00 elsewhere

William C. Rizer, Publisher

IT TAKES THAT PROFESSIONAL TOUCH TO PREPARE YOUR LOVELY HAIR FOR THOSE SPECIAL OCCASIONS

Call Us Soon **LOV-LEE Beauty Salon** FI-9-0838 NORTHVILLE

Be an Angel... Give her Heaven Sent Mist by Helena Rubinstein

only 200

How heavenly can a Christmas gift be? Give her long-lasting Heaven Sent Mist and see! A touch of her fingertip... and a mist of enchantment is in the air all around her.

Mysteriously, the bewitching scent of flowers and spice lingers on... and on.

A simply celestial gift idea. Only the price is down to earth! 1 1/2 oz. 2.00, 3 oz. 3.00.

Eau de Parfum Mist in our "crystal" bottle also in Helena Rubinstein's beloved White Magnolia. Command Performance* at 2.25 and 3.50. Available, too, in the purse-size Perfume Spray. Prices plus tax.

GUNSELL DRUG STORE "THE REXALL STORE" 102 E. Main Northville FI-9-1550

Ritchie Bros. LAUNDRY AND DRY CLEANING

344 N. Center Northville FI-9-0636

"SPECIALISTS IN FABRIC CARE"

Parties Herald Holiday Season

Mr. and Mrs. George Merwin entertained their Brookland Farms neighbors and other friends Sunday afternoon at an open house in their home at 4341 Cottisford. The neighborhood Christmas get-together is an annual affair for the Merwins.

A holiday open house was hosted by Mr. and Mrs. D. E. Schwendemann last Saturday in their home at 4690 Grassmere.

Mr. and Mrs. Albert Spaeth will exchange holiday greetings with friends from Northville and nearby communities Saturday, December 30 when they host their annual Christmas open house in their home at 4690 Dunsany. The party will continue from 2 to 10 p.m.

about WOMEN

Schnute-Thomas Vows Exchanged at St. Paul's

Donna Jean Schnute selected her wedding theme of red and green to go with the traditional wedding white for her marriage last Saturday to Robert K. Thomas.

Vases of white chrysanthemums and holly framed the altar and pew candles tinged with sprays of holly glittered along the aisle in the candle-light ceremony at St. Paul's Lutheran Church of Northville.

Miss Schnute, daughter of Mr. and Mrs. Arthur H. Schnute of 238 Grandview avenue, and Mrs. Donald L. Smith, of Southfield, pledged their vows in a double ring officiated by the pastor of St. Paul's and the bride's uncle, the Reverend A. P. Schultz, of Detroit.

Given in marriage by her father, the bride was attired in a traditional style gown fashioned in ivory satin brocade with a shallow scoop neckline, basque waistline and controlled unpressed pleats that swept into a chapel train at the back. The dress's long sleeves tapered at the wrists. Her headpiece, a sash pillbox, held an ivory tulle veil. She carried a cascade bouquet of white roses and stephanotis centered with gardenias and sprigs of holly.

Attending the bride to the altar were her mother of honor, Mrs. James W. Jakes, a cousin from Saginaw; maid of honor, Gail I. Gunther, another cousin from Saginaw; and flower girl, Marilyn Schnute, a cousin from Detroit.

Both Mrs. Jakes and Miss Gunther wore spruce green velvet dresses styled with basque waistlines, full skirts and long tapered sleeves. Their headbands and shoes were in matching green and they carried cascade bouquets of red poinsettias, white chrysanthemums, stephanotis and holly accented with red velvet streamers.

The flower girl wore a red floor length velvet dress and matching headband. Her flowers consisted of a white bas-



ing accessories for her daughter's wedding. Mrs. Smith was attired in greige silk brocade and complementing accessories. Both wore gardenia corsages accented with sprigs of holly.

A reception for 150 guests was held at Redford Inn.

The newlywed Thomas left later on a trip to Florida and New Orleans. A black basketweave suit, matching accessories and gardenia corsage were worn by the bride. On return, the couple will reside at 950 Bract in Detroit.

The former Miss Schnute is a graduate of Northville high school and the Business Institute. Her husband was a graduate from Detroit Central high school and Virginia Polytechnic with bubble skirt, and match-

Be an Angel... Give her Heaven Sent Mist by Helena Rubinstein

only 200

How heavenly can a Christmas gift be? Give her long-lasting Heaven Sent Mist and see! A touch of her fingertip... and a mist of enchantment is in the air all around her.

Mysteriously, the bewitching scent of flowers and spice lingers on... and on.

A simply celestial gift idea. Only the price is down to earth! 1 1/2 oz. 2.00, 3 oz. 3.00.

Eau de Parfum Mist in our "crystal" bottle also in Helena Rubinstein's beloved White Magnolia. Command Performance* at 2.25 and 3.50. Available, too, in the purse-size Perfume Spray. Prices plus tax.

GUNSELL DRUG STORE "THE REXALL STORE" 102 E. Main Northville FI-9-1550

To Brighten Your Holiday Menus

Cranberry Punch (3 quarts)

1 pound cranberries
1 quart water
1 1/2 cups sugar
1 1/2 cups orange juice
2/3 cup lemon juice
1 cup pineapple juice
3 1/2 cups chilled sparkling water (1 pint, 12 oz. bottle)

Wash cranberries and cook in one quart water until skins pop. Strain carefully so seeds do not get into juice. Add sugar and remaining juices to cranberry juice. Mix well. Chill. Just before serving, add sparkling water. Punch may be served with scoops of lime sherbet floating on top.

NOTE: For hot Cranberry Punch, follow recipe above and heat to boiling point instead of chilling. Add 3/4 cups boiling water instead of sparkling water and serve hot.

Avocado Dip

1 large ripe avocado
1/2 cup cream cheese
1 teaspoon salad dressing
1 teaspoon lemon juice
1/4 teaspoon Worcestershire sauce
2 drops Tabasco (optional)
1/4 teaspoon salt

Peel and mash avocado. Combine with rest of ingredients. Beat until light and fluffy. Chill.

Pick-A-Dill

Put a slice of dill pickle on a round of buttered bread. Sprinkle with shredded cheddar cheese. Slip under broiler until cheese is melted and brown. Large stuffed olive slice may be used in the same way.

Poinsettia Cucumber Mold

1 package lime-flavored gelatin
1 1/2 cups hot water
1 tablespoon lemon juice
1 teaspoon scraped onion (optional)
1/4 teaspoon salt
dash of pepper

1/2 cup gelatin
Olive and pimento for making poinsettia

Dissolve gelatin in one cup hot water. Add salt. Add one-half cup cold water and lemon juice. Stir. Put one teaspoon in individual salad mold. In this place one slice of olive and thin strips of pimento to make poinsettia. Carefully place in refrigerator to thicken. Chill rest of gelatin mixture also. When slightly thickened, fold in cucumber and onion, if used. Fill individual molds and chill until firm. Serves five to six.

Roast Rock Cornish Hen with Cornbread Stuffing

ROCK CORNISH HEN

Can be cut in half and roasted inside down or prepared whole, depending on size of hen. Roast according to directions on wrapping.

Woman's Club Yule Tea Fetes 20 New Members

"We thank you so very much for the beauty you have brought into our lives this afternoon," Woodruff applauded four out-of-town guests who combined their talents, Friday afternoon to present a program of art and music reflecting the serenity and religious solemnity of the Christmas season.

Objects of Mrs. Woodruff's plaquid were Mrs. Arlene Barber, lecturer on "The Madonna in Art"; Mrs. Margaret Cox Johnson, mezzo-soprano; Mrs. Catherine Cox Greenhill, violinist; and Mrs. Gertrude Baird, piano accompanist.

The program was prepared by the club's music committee. A second highlight of the holiday meeting was a tea honoring new members. Feted at the table and music were: the madames Robert Beerbower, Harold Blittner, Jr., W. Bogart, Paul Cargo, Charles P. Chase, H. Lorne Dyer, Ivan Ely, Richard Enderes, A. E. Jones, J. D. Kadey, William Kelly, Paul Mack, John Miller, Leiland Mills, C. Paul Nutton, D. W. Park, William Slattery, Charles Wilcox, Robert Yoder and Miss Ruth Knapp.

A LOVELY CHRISTMAS GIFT!

... naturally from **NORTHVILLE DRUG CO.**

COSMETICS to please her...
• L'OREAL
• REVLON
• D'ARNEY
• MAX FACTOR

WITH ANY PURCHASE...
• PIE & PIZZA CUTTER & SERVER
• BUTTER DIE
• CHOICE
• HANDY WRENCH

THURSDAY AND FRIDAY ONLY December 21 and 22

FREE! WHILE THEY LAST!

ADULTS ONLY
LIMIT - 1 PER CUSTOMER

SHOP OUR GIFT SELECTION CENTER!
• COSTUME JEWELRY
• BEAUTIFUL TOILETRIES
• TOBACCO GIFTS

WESTCOX - Regular up to \$17.95
WRIST WATCHES...AS LOW AS \$9.95

CHRISTMAS CANDLES REG. 15c EACH
2 for 25c

SNOW BOMBS REGULAR 99c
69c

ICICLES SARAN & TINSEL REGULAR 45c
33c

GIFT WRAPPING Giant 6 Roll Pkg. Reg. 1.98
99c

THE NOVI NEWS

Published every Thursday by The Northville Record, Inc., 101 N. Center St., Northville, Michigan.

Subscription Rates \$2.00 per year in Michigan \$4.00 elsewhere

William C. Rizer, Publisher

IT TAKES THAT PROFESSIONAL TOUCH TO PREPARE YOUR LOVELY HAIR FOR THOSE SPECIAL OCCASIONS

Call Us Soon **LOV-LEE Beauty Salon** FI-9-0838 NORTHVILLE

NORTHVILLE DRUG CO.

AL LAUX, Registered Pharmacist
151 E. MAIN FI-9-3850

EMERGENCY PRESCRIPTIONS - FI-9-0512

FREE PARKING AT THE REAR ENTRANCE OF OUR STORE

Births

A son, Randal Kent, weighing six pounds, two ounces, was born at St. Mary hospital last Friday to Mr. and Mrs. Alfred Smith, Jr., of Ridge court.

Northville grandparents are the Alfred Smiths, Sr., of Beal street.

Mr. and Mrs. William T. Phalen, of 5715 Napier road, Plymouth, announce the birth of a daughter, Susan Elaine, on December 11 at St. Mary hospital, Livonia. She weighed 7 pounds 12 ounces.

Grandparents are Mr. and Mrs. O. H. Butler of Northville, and Mr. and Mrs. William E. Phalen, of Livonia.

The Phalens also have a son, William, Jr., 3.

News Around Northville

A holiday open house was given by the Gordon Forvers, 4695 West Main Sunday from 4 to 7 p.m.

The Blake Coeses will open their Nine Mile road home to a gathering of friends next Friday, December 29.

Next Wednesday afternoon Mrs. Claude Cruse and Mrs. J. W. Chestman will hostess a holiday tea in the Crusers' Nine Mile road home.

Mrs. Charles Hogan and Mrs. Ronald Meyers, both of Saginaw, are coming here for the tea as is Miss Margaret Chestman, of New York.

Green Bean Casserole

2 1/2 lb. cans of green beans
1 5oz. tin water chestnuts
1/2 lb. cheddar cheese

Drain beans and reserve liquid. Put half of beans in unbuttered casserole. Slice water chestnuts on top. Slice half of cheddar cheese on top of this. Put rest of beans on next layer and remaining cheese over them. Pour one-third cup bean liquid over top.

Heat through in a 350-degree oven. Over top, add one can French fried onions last few minutes. (Silvered almonds may be used instead of water chestnuts).

Christmas Parfait

1/2 cups chocolate sauce
1 cup whipping cream
1 quart pistachio ice cream
8 red marshmallow cherries (halves)

Place chocolate sauce in paraffin dish first, then alternate with pistachio ice cream. Put whipped cream on top; add cherries. Store in refrigerator 24 hours.

120 East Main - Northville • Open Every Nine Till 9

SCHRADER'S Gift Ideas for the Home

Topgrain Leather Chairs

Your choice of styles and colors.

18950 20950 28950

Boston Rockers

Antique Maple, Mahogany, Black or White Decorated.

3250 and 3450

Cedar Chests

Choose from Walnut, Maple or Lined Oak... from

5950

Benches

Antique Maple, Black, Red or Green.

3950 4950 8950

Boudoir Chairs

Comfortable and practical... from

1950 to 3250

Relaxer

Choice of colors. Nylon and reinforced plastic.

6950 7950 8950

Scandia Modern

Walnut with reversible foam seat and back.

3450 3950 4950 7950

Hassocks & Stools

675 to 2950

SCHRADER'S HOME FURNISHINGS

"Since 1907"

CONVENIENT FREE PARKING IN THE REAR OF OUR TWO GREAT STORES...
111 N. Center - Northville - FI-9-1838
825 Piquette - Plymouth - GL-3-8220

OPEN EVENINGS 'TIL 9

WANT ADS

RATES
15 WORDS . . . 80c (Minimum Charge)
5 CENTS PER WORD OVER 15.

1-CARD OF THANKS
Again, at this season, I would like to express my thanks and appreciation to those people...

3-For Sale-Real Estate
PORT CHARLOTTE, Florida. New 2 bedroom home, furnished. All improvements. Owner...

3-For Sale-Real Estate
NORTHVILLE
Tri-level home on beautifully landscaped 3 acres. 2 1/2 baths...

3-For Sale-Real Estate
NORTHVILLE
2 1/2 BR. brick home, 2 car garage, 1000 sq. ft. on 1/2 acre...

3-For Sale-Real Estate
NORTHVILLE
2 1/2 BR. brick home, 2 car garage, 1000 sq. ft. on 1/2 acre...

3-For Sale-Real Estate
NORTHVILLE
2 1/2 BR. brick home, 2 car garage, 1000 sq. ft. on 1/2 acre...

3-For Sale-Real Estate
NORTHVILLE
2 1/2 BR. brick home, 2 car garage, 1000 sq. ft. on 1/2 acre...

3-For Sale-Real Estate
NORTHVILLE
2 1/2 BR. brick home, 2 car garage, 1000 sq. ft. on 1/2 acre...

3-For Sale-Real Estate
NORTHVILLE
2 1/2 BR. brick home, 2 car garage, 1000 sq. ft. on 1/2 acre...

3-For Sale-Real Estate
NORTHVILLE
2 1/2 BR. brick home, 2 car garage, 1000 sq. ft. on 1/2 acre...

3-For Sale-Real Estate
NORTHVILLE
2 1/2 BR. brick home, 2 car garage, 1000 sq. ft. on 1/2 acre...

3-For Sale-Real Estate
NORTHVILLE
2 1/2 BR. brick home, 2 car garage, 1000 sq. ft. on 1/2 acre...

3-For Sale-Real Estate
NORTHVILLE
2 1/2 BR. brick home, 2 car garage, 1000 sq. ft. on 1/2 acre...

3-For Sale-Real Estate
NORTHVILLE
2 1/2 BR. brick home, 2 car garage, 1000 sq. ft. on 1/2 acre...

3-For Sale-Real Estate
NORTHVILLE
2 1/2 BR. brick home, 2 car garage, 1000 sq. ft. on 1/2 acre...

3-For Sale-Real Estate
NORTHVILLE
2 1/2 BR. brick home, 2 car garage, 1000 sq. ft. on 1/2 acre...

3-For Sale-Real Estate
NORTHVILLE
2 1/2 BR. brick home, 2 car garage, 1000 sq. ft. on 1/2 acre...

3-For Sale-Real Estate
NORTHVILLE
2 1/2 BR. brick home, 2 car garage, 1000 sq. ft. on 1/2 acre...

3-For Sale-Real Estate
NORTHVILLE
2 1/2 BR. brick home, 2 car garage, 1000 sq. ft. on 1/2 acre...

3-For Sale-Real Estate
NORTHVILLE
2 1/2 BR. brick home, 2 car garage, 1000 sq. ft. on 1/2 acre...

3-For Sale-Real Estate
NORTHVILLE
2 1/2 BR. brick home, 2 car garage, 1000 sq. ft. on 1/2 acre...

3-For Sale-Real Estate
NORTHVILLE
2 1/2 BR. brick home, 2 car garage, 1000 sq. ft. on 1/2 acre...

3-For Sale-Real Estate
NORTHVILLE
2 1/2 BR. brick home, 2 car garage, 1000 sq. ft. on 1/2 acre...

3-For Sale-Real Estate
NORTHVILLE
2 1/2 BR. brick home, 2 car garage, 1000 sq. ft. on 1/2 acre...

3-For Sale-Real Estate
NORTHVILLE
2 1/2 BR. brick home, 2 car garage, 1000 sq. ft. on 1/2 acre...

3-For Sale-Real Estate
NORTHVILLE
2 1/2 BR. brick home, 2 car garage, 1000 sq. ft. on 1/2 acre...

3-For Sale-Real Estate
NORTHVILLE
2 1/2 BR. brick home, 2 car garage, 1000 sq. ft. on 1/2 acre...

3-For Sale-Real Estate
NORTHVILLE
2 1/2 BR. brick home, 2 car garage, 1000 sq. ft. on 1/2 acre...

3-For Sale-Real Estate
NORTHVILLE
2 1/2 BR. brick home, 2 car garage, 1000 sq. ft. on 1/2 acre...

OUR WANT ADS
APPEAR IN FOUR
COMMUNITY NEWS

3-For Sale-Real Estate
NEW HUDSON
3019 Wells St.
Two story frame, living room, dining room, bedroom and bath...

3-For Sale-Real Estate
NORTHVILLE
Tri-level home on beautifully landscaped 3 acres. 2 1/2 baths...

3-For Sale-Real Estate
NORTHVILLE
2 1/2 BR. brick home, 2 car garage, 1000 sq. ft. on 1/2 acre...

3-For Sale-Real Estate
NORTHVILLE
2 1/2 BR. brick home, 2 car garage, 1000 sq. ft. on 1/2 acre...

3-For Sale-Real Estate
NORTHVILLE
2 1/2 BR. brick home, 2 car garage, 1000 sq. ft. on 1/2 acre...

3-For Sale-Real Estate
NORTHVILLE
2 1/2 BR. brick home, 2 car garage, 1000 sq. ft. on 1/2 acre...

3-For Sale-Real Estate
NORTHVILLE
2 1/2 BR. brick home, 2 car garage, 1000 sq. ft. on 1/2 acre...

3-For Sale-Real Estate
NORTHVILLE
2 1/2 BR. brick home, 2 car garage, 1000 sq. ft. on 1/2 acre...

The Northville Herald
THE NOVI NEWS
FI 9-1700

3-For Sale-Real Estate
NEW HUDSON
3019 Wells St.
Two story frame, living room, dining room, bedroom and bath...

3-For Sale-Real Estate
NORTHVILLE
Tri-level home on beautifully landscaped 3 acres. 2 1/2 baths...

3-For Sale-Real Estate
NORTHVILLE
2 1/2 BR. brick home, 2 car garage, 1000 sq. ft. on 1/2 acre...

3-For Sale-Real Estate
NORTHVILLE
2 1/2 BR. brick home, 2 car garage, 1000 sq. ft. on 1/2 acre...

3-For Sale-Real Estate
NORTHVILLE
2 1/2 BR. brick home, 2 car garage, 1000 sq. ft. on 1/2 acre...

3-For Sale-Real Estate
NORTHVILLE
2 1/2 BR. brick home, 2 car garage, 1000 sq. ft. on 1/2 acre...

3-For Sale-Real Estate
NORTHVILLE
2 1/2 BR. brick home, 2 car garage, 1000 sq. ft. on 1/2 acre...

3-For Sale-Real Estate
NORTHVILLE
2 1/2 BR. brick home, 2 car garage, 1000 sq. ft. on 1/2 acre...

12-Help Wanted
FEMININE - experienced nurse or licensed practical nurse. Steady day-work. Call between 9 a.m. and 8 p.m. GL 3-7429.

13-Situations Wanted
WILL DO typing in my home. FI-9-0204.

16-Business Services
PHOTOCOPI
Black and White Prints
RYAN W. WAKEFIELD
Engineering and Surveying

16-Business Services
TREE PRESERVATION
• FERTILIZING
• CARLING
• BRACING
• TRIMMING
• SPRAYING
• REMOVAL

17-Notices
ALPHA TABLETS contain all the ingredients of Spenser Drug Store. FI-9-0558.

LAND CONTRACTS
WANTED
Immediate Cash
EARL GARRELS, REALTOR
6417 Commerce Road
Detroit, Michigan

HALL
RENTALS
All Occasions Weddings
Banquets Meetings
LOCAL 24 - UAW HALL
5700 Wilson Road, Wixom, Mich.
FI-9-2948

10-Wanted to Buy
READLE sewing machine in good working condition. Phone GE 8-3824. FI-9-0204.

12-Help Wanted
UNENCUMBERED middle age woman for babysitting and help with housework, preferably live-in, more for home than wages. Call GE 8-8858 after Christmas. FI-9-0204.

16-Business Services
PHOTOCOPI
Black and White Prints
RYAN W. WAKEFIELD
Engineering and Surveying

16-Business Services
TREE PRESERVATION
• FERTILIZING
• CARLING
• BRACING
• TRIMMING
• SPRAYING
• REMOVAL

17-Notices
ALPHA TABLETS contain all the ingredients of Spenser Drug Store. FI-9-0558.

LAND CONTRACTS
WANTED
Immediate Cash
EARL GARRELS, REALTOR
6417 Commerce Road
Detroit, Michigan

HALL
RENTALS
All Occasions Weddings
Banquets Meetings
LOCAL 24 - UAW HALL
5700 Wilson Road, Wixom, Mich.
FI-9-2948

10-Wanted to Buy
READLE sewing machine in good working condition. Phone GE 8-3824. FI-9-0204.

12-Help Wanted
UNENCUMBERED middle age woman for babysitting and help with housework, preferably live-in, more for home than wages. Call GE 8-8858 after Christmas. FI-9-0204.

NOEL
the nicest
CHRISTMAS
ever!
ELLIS'
ELECTRONICS

Best Wishes
for a
Merry Christmas
We wish to thank you
for your patronage.
Sally Bell Bakery

STOP
at
NOVI
INN
COCKTAIL
LOUNGE
Let glad tidings ring out this Joyous Christmas!

Silent Night
May the joys of Christmas fill
your hearts with wonder and love, both
now and through the coming years.
WILLOUGHBY SHOES
PLYMOUTH

THESE SERVICES ARE JUST A PHONE CALL AWAY

AAA WRECKER
AMBULANCE
Harrowood's Service
Open 24 Hours - Ambulance Service
Complete Welding - New Steam Cleaning Equip.
Novi Rd., Grand River, Novi FI-9-2610

LANDSCAPING
Complete Landscaping Service
Tree Service
Green Ridge Nursery
6600 NAPIER
FI-9-1111

Need A Plumber?
CALL
S & S Plumbing & Heating
SALES & SERVICE
Prompt Plumbing and Oil Burner Service
4339 Grand River, Novi FI-9-3431

AIR CONDITIONERS
FREEZERS
APPLIANCES
Northville
Refrigeration Service
135 N. CENTER
ENTER FROM THE PARKING
LOT IN THE REAR.
FI-9-0880

Wedding
Announcements
SEE OUR SAMPLE BOOKS
THE NORTHVILLE RECORD
THE SOUTH LYON HERALD

STOP BODY RUST
WITH
INNERCOATING AT
REIFER'S BUMPING & PAINTING
COME IN FOR FREE EXAMINATION
128 W. Main - Northville FI-9-2872 or FI-9-0054

Quality Printing
PROMPT SERVICE
THE NORTHVILLE RECORD
THE SOUTH LYON HERALD
GE-7-2011 - FI-9-1700

To Advertise
Your Service
In This Space
Phone FI-9-1700 or GE-7-2011
Read Weekly in Northville
7:00 Hours in
Northville - Novi - Wixom
South Lyon and Whitmore Lake

GALE WHITFORD
SIDING - ROOFING
ALUMINUM SIDING STORM WINDOWS
CUSTOM FIT TRIM
RESIDENTIAL AND COMMERCIAL
23283 CURRIE RD. SOUTH LYON

MONUMENTS
to perpetuate cherished memories
STANDING ALWAYS
IN LOVING TRIBUTE.
Choose here a beautiful family memorial
in gleeful granite or marble
Allen Monument Works
You can rely on our counsel in choosing
a memorial of enduring beauty
580 South Main Northville FI-9-0770

PIANOS & ORGANS
INSTRUCTIONS - SALES
- NEW & USED -
HAMMOND - BALDWIN - LOWREY
Arthur E. Pipok
27 Meadbrook Lane GE-7-2449

Greetings
...and our heartfelt gratitude for your kind friendship and patronage during the year.

NOVI INN



Mr. and Mrs. Vasil Naum

Wed 50 Years

Christmas Day marks the 50th anniversary of the Naum family's arrival in Northville. Mr. and Mrs. Vasil Naum have always been active in the community.

PREPARE YOURSELF FOR YOUR NEXT PROMOTION NOW

ARE YOU READY TO TAKE THE JOB JUST ABOVE YOURS?

If it requires skills you don't have but you can get, you're hurting yourself and your family if you don't get the training NOW that you need to take the next step up.

A few evening hours per week at Cleary College will help to prepare you for that day when management looks for someone to fill a key job. Contact Cleary College today for the evening class schedule which best suits your needs and working hours. Call for the facts today.

REGISTRATION FOR EVENING CLASSES
January 3 from 7 p.m. to 9 p.m.
Evening Class Hours: 5:45 - 10:00 p.m.

EVENING CLASSES WHICH MEET MONDAY, WEDNESDAY, FRIDAY
Accounting Program - Bookkeeping, Introductory Accounting, Intermediate Accounting.

COMMERCIAL PROGRAM - Beginning and Advanced Typing, Beginning, Intermediate, Advanced and Speed Building (Shorthand), and Business Machines of all types.

EVENING CLASSES MEETING ONE NIGHT PER WEEK
Advanced Accounting, Business Law, Quality Control, Personnel Relations, Development of Executive Skills, Labor Relations, Safety and Sanitation Systems, Insurance, Speech, Salesmanship, Rapid Reading.

EARN A DIPLOMA TITLE - DEGREE

CLEARY COLLEGE SPECIALISTS IN BUSINESS EDUCATION SINCE 1883

For complete information, write, wire or call Ypsilanti, Michigan • Hunter 3-4400



A GOOD DEED - Patricia Tolton (standing), of Novi Girl Scout Troop 140, hands Good-fellow President Ray Keir an envelope containing proceeds she and the other girls pictured earned by selling Christmas ornaments. The scouts also held a party Wednesday evening, charging canned goods as admission, to gather funds for the Goodfellow Christmas baskets. Seated left to right are: Donna Tymonshy, Nancy Cutler and Janice Paquette. Second row, Sandra Bernhart, Roberta Whiteaker, Rosalee Frontera and Rebecca Lyke. Boy Scouts of Troop 54 also donated to the Christmas basket fund to the Goodfellow. They earned \$50 by delivering handbills, and will take part in the basket delivery tomorrow night.

Thanks... and Merry Christmas!

I want to take this opportunity to thank all my friends and policyholders for their valued friendship in 1961. To everyone a Merry Christmas.

Representing
WOODMEN ACCIDENT AND LIFE COMPANY

"BOB" WILLIAMS
1015 W. Ann Arbor Trail
Plymouth GL-3-2925

CHRISTMAS LOANS

We're not Santa Claus, but we would like to help make this Christmas a memorable one for you.

Take advantage of sales and discounts by shopping with CASH. Borrow \$25 to \$500. Payments can be repaid in monthly installments to fit your budget.

Loans also made for fuel, car repairs, insurance, taxes, education, medical expenses, and any other worthwhile purposes.

PHONE OR COME IN TODAY

PERSONAL FINANCIAL COUNSELING

Plymouth Finance Company
830 PENNINGMAN AVE. FREE PARKING IN REAR. GL-3-6100

CHRISTMAS GREETINGS

Happy Holidays! Thank you for your loyalty and good will throughout the year.

THE PHOTOGRAPHIC CENTER
PLYMOUTH

Babson Forecast on Tap

Roger Babson's annual "Business and Financial Forecast" for the coming year will be published in next week's edition.

Previous predictions of the internationally-known commentator and investment adviser reveal an average of 83 per cent correct over the past 20 years.

Born and reared in an old-fashioned atmosphere of hard work and hustle on a farm in Gloucester, Mr. Babson went to the Massachusetts Institute of Technology. Upon graduating, he turned to financial and business activities in which his father was engaged.

His exertions, however, undermined his health; he contracted tuberculosis and he was sent West as "good as dead." It was while he was convalescing from this illness that he worked out some of the fundamentals of the possibilities and problems of business forecasting. His weekly releases are used by over 400 newspapers and his financial reports by 20,000 corporations and estates. His research work is carried on by a large staff of experts.

Mr. Babson founded Babson Institute for Men; and, in cooperation with the late Mrs. Babson, developed Webster College for Women - both nationally-known educational institutions. Here young men and women may concentrate on the fundamentals of honest and efficient business administration. He founded a Midwest Institute of Business Administration, located in Eureka, Kansas, the center of the United States. He has been active also in the establishment of other mediums of service to the public, such as the Gravitry Research Foundation, located at New Haven, New Hampshire.

Mr. Babson has probably done more than any other man to create among his millions of newspaper readers an interest in simple business problems, and to install a broader vision in businessmen, enabling them to meet the ups-and-downs of the business cycle.

FRISBIE REFRIGERATION

from all of us to all of you!

CHRISTMAS GREETINGS

Happy Holidays! Thank you for your loyalty and good will throughout the year.

THE PHOTOGRAPHIC CENTER
PLYMOUTH

End Football Dispute School Officials Renew Clarenceville Relations

Northville and Clarenceville high schools are back on speaking terms this week.

Officials of the two schools met Monday with representatives of the Michigan High School Athletic Association and agreed to resume interschool relations that were severed by local administrators following the November 3 football game between the two schools at Clarenceville.

In the grid contest, won by Northville 35-0, two Clarenceville players attacked Mustang Quarterback Steve Judy just before the gun sounded. He was knocked unconscious.

Monday's agreement to make-up came just in time. Northville's travel to Clarenceville last week.

School officials have scheduled an assembly of high school students today to explain the steps that have been taken and to urge student-body cooperation in seeing that there are no further incidents.

After Monday's meeting the following statement was issued by those in attendance:

"At a meeting held at Trenton December 18, 1961, problems were resolved which resulted from an unfortunate incident at the conclusion of a football game played between Northville and Livonia-Clarenceville High Schools on November 3, 1961. The following were pre-agreed to at this meeting: Superintendent Russell Amerman and Principal Fred Stefanski of Northville; Superintendent L. Schmidt and Principal David McDowell of Livonia-Clarenceville; and President Theodore Sundquist and State Athletic Director Charles E. Forsythe, representing the Michigan High School Athletic Association.

In view of the expressed opinions of the boards of education of the two school systems, the resolving of the problems concerned was handled at this joint meeting. There was cognizance of the action of Livonia-Clarenceville High School authorities in their disciplinary action involving two students who were concerned with the difficulties. It was felt by all present that future interschool athletic relations should be maintained and that the aid and support of both students and adults to attain this end would be expected at the regularly scheduled basketball game to be played at Livonia-Clarenceville High School, Friday, December 22, 1961, with Northville High School.

"Further, it was the unanimous feeling that the group present at this meeting recognized that future league and community relations could best be served by continued cooperation of both communities, including high school students and adults."

Tuesday the Northville board of education put its approval on the action and issued the following statement:

"Upon their return from the joint meeting Monday afternoon, December 22, 1961, with the Livonia - Clarenceville Schools and the Michigan High School Athletic Association, Messrs. Amerman and Stefanski explained to the Northville Board of Education the results of the conference.

"Upon the recommendation of the Superintendent Amerman the school board agreed unanimously to accept the action of the Livonia-Clarenceville Schools as continued, and that the basketball game scheduled for December 22 be played.

"It is the earnest plea of the Northville school system that Northville spectators cooperate to the fullest with both schools in keeping this contest free from unsportsmanlike conduct. We know that we can count on every Northville fan to help us."

Bowling Standings

NORTHVILLE LANES		Junior House League	
Nor. Cocktail Lge.	34 22	Brummet Locker	41% 18%
Oakland Paving	32% 23%	Thomson Amphib	37% 22%
C. R. Ely's	32 24	Vita Boy Chips	37% 22%
Myers Standard	31% 24%	Freyd's Cleaners	33 27
Smith Products	31 25	John Machi Parts	32 28
Johnston Sand & Gravel	30% 25%	F. G. Gimes Prod.	30% 29%
Northville Lanes	30 26	Novi Auto Parts	30 30
Perfection Cleaners	29 27	Judy Oil Co.	27 34
Blooms Insurance	27% 28%	Vern & Morris Ser.	26 34
Nor. Sand & Gravel	23 33	Taft Construction	26 34
Nor. Nor Drive Inn	20 36	Johnston Electric	16 39%
Robt. Johnston Ins.	15 41		
		200 Scores for Week:	Turbull 225; Thumson 222; Fairbank 212; Gross 211; Forsyth 210; Doolin 210; Judy 207; Yenson 200; Krich 201; Brummet 200; Wilkins 201.
		Senior House League	
Freyd's Cleaners	38 22		
Briggs Trucking	35% 24%		
Ramsay's Bldg.	34 26		
Fisher Shop	33 27		
Nor. Restaurant	32% 27%		
Northville Record	32 28		
Northville Hotel	32 28		
Galeway's Bowling	27 33		
Wall Ash Spg.	27 33		
Wayne Door & Ply.	26% 33%		
Nor. Mens Shop	23% 36%		
Chancellor's Dnry	18 42		
		200 Scores for Week:	Woodmans 207; 206; Depoert 206; 255; 214; 658; Cook 227; 210; 613; McArthur 225; Light 227; 224; 203; Merrifield 220; 602; Briggs 217; Taylor 214; 201; Gatter 212; 203; Newman 213; 204; Ash 213; Yerkes 211; 208; Cole 211; Albrecht 211; Raymond 210; Perry 210; Fraleigh 209; McMurray 206; Stevens 205; Myers 204; Gadioli 202; Robinson 201.
		Thursday Nite Owls	
		Low-Lee Salon	36% 19%
		Fuckey Insurance	24% 21%
		Merriman Realty	34 22
		Geo Sipe Tire Co.	34 22
		Schradlers	33% 24%
		Wayne Door & Ply.	29% 28%
		Northville Lanes	28 28
		B & O General	28 28
		Keyis	22% 32%
		Houser's	21 35
		Koffen Kup, Rest.	20% 35%
		Monte's	15 41
		Ind. Hi Single -	
		L. Mattias -	220
		M. Costard -	518
		Team Hi Single -	294
		Merriman Realty -	794
		Team Hi Series -	
		Fuckey Int. -	2197.

Cagers Put Barons Into Second Place

Northville rolled to its fourth straight win of the young cagers last night when they defeated West Bloomfield after the holiday vacation, January 5.

Except for the first five minutes, the outcome of the game was never in doubt. The visiting Barons threw a scare into the home fans - and probably the Mustangs as well - by hitting Clarkston pulled into a tie for second place with Bloomfield Hills.

It was Northville's third W-O League game and leaves the local quintet tied with West Bloomfield for the league leadership with identical 3-0 records.

Northville is scheduled to travel to Clarenceville Friday night, when plays host to West Bloomfield after the holiday vacation, January 5.

By the end of the quarter Northville had pulled ahead, 17-14 with Steve Judy leading the scoring with three quick jump shots from outside the circle. At halftime Northville led 33-21.

In the waning minutes of the game the Mustangs had a commanding lead and Coach Longridge pulled his starting five.

Despite the fact that the Barons kept the center court press well bottled-up throughout most of the night, Center Dan Brown still managed to lead all scorers with 15 points. Tom Swiss copped runner-up honors in the scoring department with five points on a 10-for-15 shooting.

Northville's junior varsity Colts lost the preliminary game to Bloomfield Hills JV cagers despite a 23-19 halftime lead. Final score was 47-40. The junior Barons grabbed the lead with a third period spurt out-scoring the Colts in the stanza, 18-9.

Warren Pins Second Loss On Wrestlers

Northville wrestlers lost a relatively close meet last week to bring their win-loss record to 1-2. Mustang Coach Jack Kreiner led the meet could have gone either way, judging by the way in which Warren Lincoln handed his team a 28-21 defeat.

He explained that the Northville grapplers had to give up five points on a forfeit because of one team member's ineligibility. He added that 133-pound Terry LaRue was injured during the match, so his opponent was able to pin him.

Kreiner commented that the Northville matmen are still improving, and each match gives them added experience, which they lack most. He said their current problem now is aggressiveness. A little more aggressiveness, he said, and at least one of their three decisions could have been won by a fall.

Mustangs who pinned their opponents were 85-pound Mike Brandenburg and 150-pound Dave Clark. Those who won by decision were 103-pound Russ Nichols, 127-pound Ron Reitzke and 145-pound Jack Carter.

154-pound Gary Nichols fought to a draw, and Mustangs who were pinned include Doug Nichols, Terry LaRue and Jim Jiggins. Those who lost by decisions include Joe Hay and Jerry Biddle.

Mat Team's Second Win Is Farmington's 'Sorrow'

Northville Mustang matmen, experienced wrestlers to the Michigan AAU regional tournament at Livonia Bentley on Friday evening, won their second of four wrestling meets 32-20.

Coach Jack Kreiner, very happy about the win, pointed to the fact that four Northville grapplers won by pinning their opponents, while four more won easy decisions.

"This shows the steady improvement we're having," he said. He added that the three Mustangs who were pinned were first-year men, who are still green.

"These fellows simply made mistakes," he explained, "and their opponents caught them. There is no way to avoid this all the time."

Tonight, Northville has another home meet, against Romulus. Kreiner said this was the best as tough a team as the Mustangs will meet this season. Matches start at 7:30 in the high school gymnasium.

Kreiner also announced that he was sending his eight ex-

W-O Standings

W	L
NORTHVILLE	3 0
W. Bloomfield	2 0
Bloomfield Hills	2 1
Brighton	1 2
Holly	1 2
Clarenceville	0 3
Milford	0 3

OTWELL HEATING

Bill Otwell Says:

"OUR SINCERE THANKS TO ALL OUR CUSTOMERS AND FRIENDS FOR THEIR LOYAL SUPPORT!"

1 STOP NOWELS BUILDING CENTER GIFTS FOR DAD'S WORKSHOP AND FOR RECREATION...

METAL WORKBENCH

INCLUDES: PEDESTAL FOR TOOLS, TOP, METAL LEGS, METAL DRAWERS, METAL BOTTOM SHELF.

\$23.95 COMPLETELY ASSEMBLED

METAL WORKBENCH KIT \$14.95

• LEGS
• SHELF
• DRAWER

SHOP OUR SELECTION OF SMALL HAND TOOLS

YOUR CHOICE OF ANY 5 \$4.39

PING PONG TABLES

2 TABLES MAKE UP OFFICIAL SIZE, (58") x (74") & FOLDING LEGS

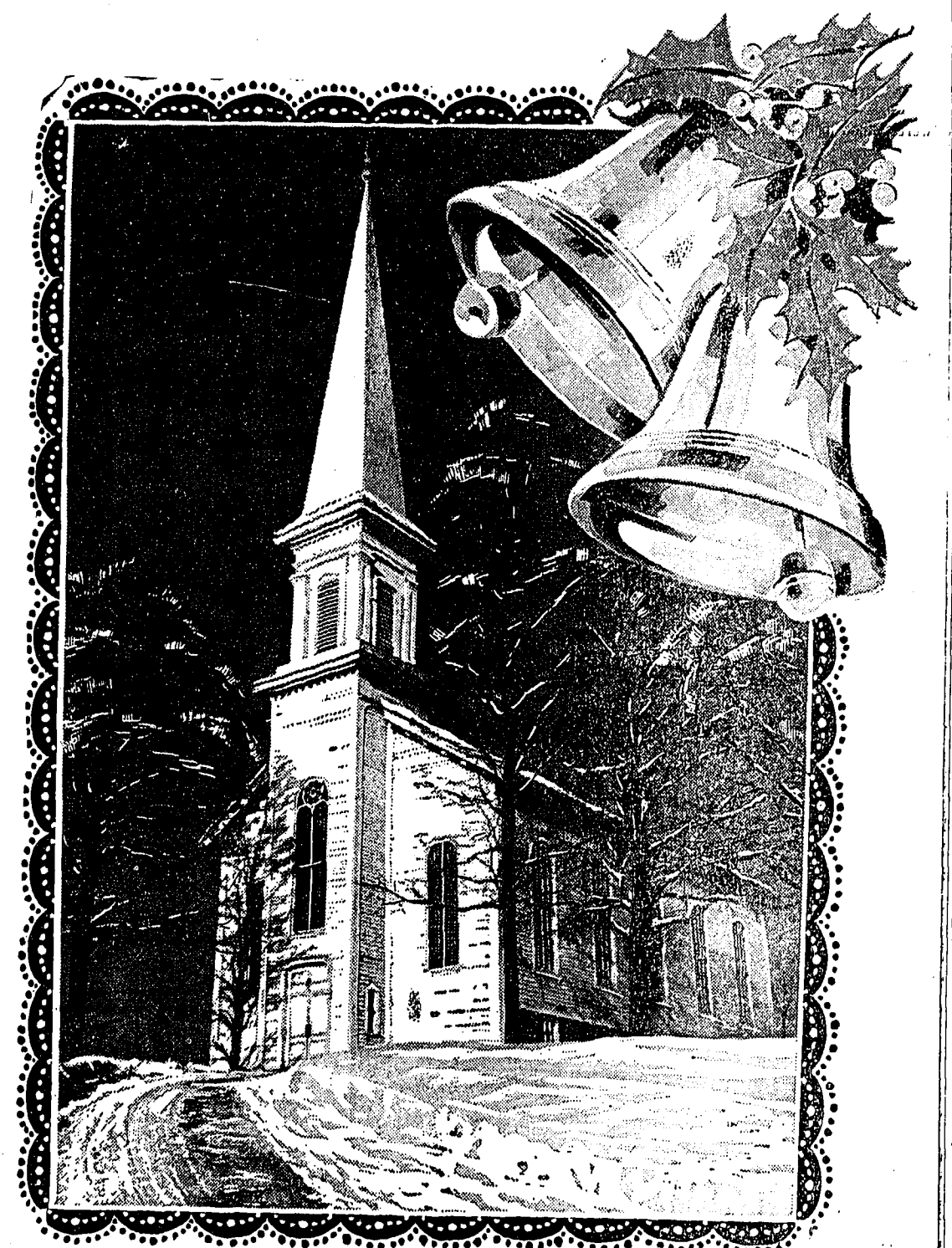
\$24.95

CHILDREN'S PLAY TABLE \$10.95

• STURDY
• REDWOOD

NOWELS LUMBER & COAL CO.

630 E. BASELINE RD. NORTHVILLE MI-9-0150



In the happy spirit of the Christmas season, we send sincerest greetings to our loyal friends and customers, with hearty thanks for their patronage.

THE NORTHVILLE RECORD
THE NOVI NEWS

GREETINGS of the CHRISTMAS Season

FROM THE OFFICERS AND STOCKHOLDERS OF
The Northville Driving Club

Wishing YOU the best for Christmas
ATCHINSON GULF SERVICE

Papes'...

WITHOUT A DOUBT... GIFTS FROM PAGES ARE GREATLY APPRECIATED! YOU TOO, WILL ENJOY THE SELECTION OF UNUSUAL GIFTS AS YOU BROWSE AT PAGES... LOOK AT THE CORNING WARE IF YOU'RE SHOPPING FOR THAT "SPECIAL" MAN, GIVE HIM A TRAVEL BAG AND OF COURSE AN INDIVIDUAL CARD WISHING HIM CHRISTMAS LOVE! A FEW OF THE GIFTS THAT WILL ALWAYS BE REMEMBERED ARE WALLETS BY PRINCEPS, RAINERS, LAMPS, CLOCKS, CRYSTAL, PICTURES, SANDERS' CANDY AND... OF COURSE THE NEVER-TO-BE-FORGOTTEN ORIGINAL HUMMELS. YOU CAN BEAUTIFULLY WRAP THESE BEAUTIFUL GIFTS WITH BEAUTIFUL PAPER AND RIBBON WHEN YOU CHOOSE FROM OUR SELECTION OF OUTSTANDING GIFT WRAP. IF YOU PLAN TO STOP IN, SEE OUR NEW YEAR'S GLASS WARE! O'YES... REMEMBER - BEGINNING DEC. 26, YOU SAVE 50% ON CHRISTMAS CARDS, RIBBON AND WRAPPING PAPER.

Papes'...

OPEN EVENINGS TIL NINE
852 W. Ann Arbor Trail Plymouth

BLUNK'S, Inc. Open Evenings

where Christmas dreams come true

For the Family... Carpets - MAGNAVOX - APPLIANCES

MAGNAVOX ALL-TRANSISTOR RADIO

Complete with Carrying Case \$29.95

Model AM-50

WASHER \$138.00

Delivered, Before Christmas

BLUNK'S, Inc.

Floor Covering - Magnavox - Maytag
Budget Terms - Open Evenings Til 9 P.M.
640 STARKWEATHER PLYMOUTH GL-3-6900

ROY RUFLEDGE 23 Years Experience

BERT HALORAN 23 Years Experience

HOW PUCKETT 11 Years Experience

JOHN HAAS 16 Years Experience

HOWARD STECKLES Sales Manager

MAY THE HOLIDAY SEASON BE PLEASANT FOR ALL OF YOU

Emergency PLUMBING

OTWELL Heating & Plumbing
Plymouth GL-3-6500
Nights - GL-3-2794

SERVING PLYMOUTH SINCE 1940

Try to Match these Christmas Cards with the Senders



These Christmas cards were sent out this year by the following 14 Northville-Nowi area families: George Clark, Dr. W. L. Howard, J. R. Carrington, Glenn Cummings, Andrew Bertoni, Joseph Crupi, Harold Hartley, A. M. Allen, Judge Charles McDonald, John McGuire, R. H. Amerman, Frazer Staman, Dr. Pasquale Buonicontio and A. R. Clarke. Can you match card with sender?

(Approx) Top row — (l. to r.) Allen, McGuire, Hartley, Amerman and Howard; Second row — (l. to r.) Carrington, Buonicontio and Crupi; Bottom row (l. to r.) Clarke, Cummings (top card), Clark (bottom card), McDonald, Staman and Bertoni. If you identified half, we'll call it passing! Merry Christmas.

Say Merry Christmas with Sanders Candy

There's no sweeter way to say it! Sanders Candy has been famous in Detroit since 1875... famous for superb quality, the skillful touch of master candymakers... and for sheer good eating.

Christmas Treasure Box \$4.95, Pavilion Chocolates \$1.35

GUNSELL DRUG STORE THE REXALL STORE 102 E. Main Northville Fl-9-1550

Creetings Ring out, ring out! The bells of cheer sound our happy wishes to you and yours for a Joyous Christmas Season.

CHRISTMAS Creetings As you spend this season with your loved ones, may great joy fill your home, and peace fill your heart.

JONES FLORAL CO.



JOHN MACH FORD SERVICE DEPT: 290 S. MAIN — PLYMOUTH GL-3-1390 PLYMOUTH-EVERGREEN CENTER DETROIT

Legion Plans Party On New Year's Eve Northville American Legion Past 147 invites the public to attend a New Year's Eve party... Gifts? Mirrors, Bath Enclosures, Glass Furniture Tops, Northville Glass 106 Dunlap, Near Fl-9-1810

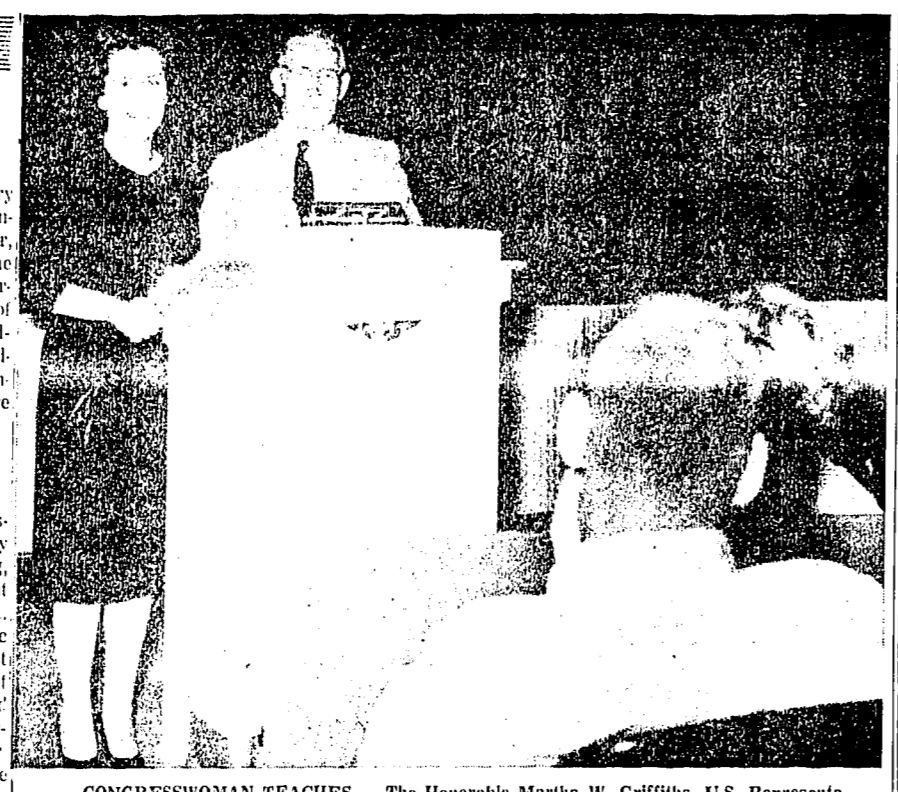
P and A THEATRE Northville Phone Fl. 9-0210 NOW SHOWING THRU THURSDAY... BREAKFAST AT TIFFANY'S... BLUE HAWAII... X-15... STARRING DAVID MCCLEEN - CHARLES BRUNSON

AT FISHER'S... Choose a handbag! Nicest way to give your Christmas wishes! And Santa finds a great choice here!

LET'S TALK CARS... Some Thoughts On Christmas The biggest buildup of the year emotionally, commercially and in a religious sense always precedes the holiday we're just getting into...

ALWAYS A COMFORTABLE GIFT... SLIPPERS FOR THE ENTIRE FAMILY! IF YOU'RE IN DOUBT... Give a FISHER'S GIFT CERTIFICATE with a miniature shoe.

Fisher's Your Family Shoe Stores—Serving Western Wayne County 290 S. MAIN — PLYMOUTH GL-3-1390 PLYMOUTH-EVERGREEN CENTER DETROIT



CONGRESSWOMAN TEACHES — The Honorable Martha W. Griffiths, U.S. Representative for the 17th Congressional District, on vacation from her elective job in the House of Representatives in Washington, D.C., accepted the invitation of Northville High School Teacher Edward Ahlborn to take over social studies classes here Monday, Mrs. Griffiths, in a turnabout for teachers, spent the day answering instead of asking questions.



NEW CHURCH — The Reverend John W. Miller turns the first spade of earth at groundbreaking ceremonies Sunday for a new church of the Evangelical Lutheran Church of the Epiphany will build on a six-acre site on Five Mile between Bradner and Hungary roads in Northville township. Present plans call for construction of one unit consisting of a wing for worship and a second wing to house a fellowship hall, classrooms and an office.

In Uniform Wixom Group Holds Christmas Party The Wixom Extension Group met with Mrs. Arthur Cox at 2312 Charms Road, for their annual Christmas party, December 12th. The group completed making nine bouquets, three swags and three grave blankets. After a potluck dinner Christmas gifts were exchanged.

for the finest in entertainment THE PENN THEATRE Plymouth, Michigan Phone Glenview 3-0870 WED., THURS., FRI., SAT., DEC. 20-21-22-23

THE BIG ONE FOR EVERYONE! GIMARRON Christmas and New Year's Eve

AS IN PAST YEARS, THE PENN THEATRE WILL BE CLOSED DECEMBER 24, SO THAT WE MAY SPEND THE HOLIDAY EVE WITH OUR FAMILIES. Opening Christmas Nite, Dec. 25 - Sat., Dec. 30

COMING SOON AT THE PENN... BOB LUTNER HOPE TURNER BACHELOR IN PARADISE... JANIS PRIGE JIM HUTTON - PAULA PENNISI... NIGHTLY SHOWINGS 7:30 and 9:00

Obituary

TAMARA LYNN TENNANT Rural Hills cemetery. Rosary was said Friday at Elbert Funeral home. Mrs. Ezenoberger, a native of Germany, where she was born June 7, 1875, is survived by a son, William J., of Bloomfield Hills, four grandchildren and six great-grandchildren. She had lived in Northville nearly 20 years before leaving.

GLENN W. KING Services were held from Casterline Funeral home Monday afternoon for Glenn W. King, 39-year-old Northville resident who died December 15 at St. Mary hospital, Livonia. The Reverend Paul Carga, First Methodist church, officiated at services which were followed by burial at Parkview Memorial cemetery in Livonia.

CHARLES H. BOVEE Interment at Oakland Hills cemetery, Novi, followed services from Casterline Funeral home Tuesday for Charles H. Bovee, 75, who died suddenly December 16 in his home at 2 Woodland drive. Mr. Bovee's grandson, the Reverend Keith Bovee, Methodist church minister in North Muskegon, officiated at services. Survivors include Mr. Bovee's wife, Nina; sons: Donald, Costa Mesa, California; Norval, Mt. Pleasant; daughters: Mrs. Elbert Martin, St. Petersburg, Florida; Mrs. Bruce McAllister, Northville; sister, Mrs. William Bruder, Wayne; brothers: John Becker, Port Huron; Earl Edgewater Edgewater, Florida; 17 grandchildren and 12 great grandchildren. Mr. Bovee, who retired last month, had worked at Wayne county training school and Bovee restaurant. The son of Fred and Elsie (Brägger) Bovee, he was born June 4, 1886 in Pittsfield township.

MARIETTA GOBLE Marietta Goble, Novi resident who died suddenly December 14 at her home at 2019 Novi road, was buried in Novi cemetery Monday following funeral services from Casterline Funeral home. The Reverend T. J. Nevin, Novi Methodist church, officiated. Miss Goble, 75, is survived by a cousin. She was born in Port Huron April 9, 1886, the daughter of John and Ann (MacKay) Goble. She was a member of Novi Methodist church.

ELIZABETH BISNYAK Elizabeth Bisnyak, 52, of 5019 West Nine Mile road, died at St. Mary hospital, Livonia, December 12, following an illness of two years. The Reverend Paul Carga, First Methodist church, officiated at funeral services from Casterline Funeral home Tuesday. Interment was at Rural Hills cemetery. Surviving Mrs. Bisnyak are her husband, Louis; sons: Louis, Coquina, California; Joseph, Redford; Robert, Inkster; Edward, Northville; sisters: Mrs. Mary Troch, Detroit; and eight grandchildren. Mrs. Bisnyak, a native of Budapest, Hungary, had lived in Northville since 1914.

Merry Christmas to All! LARKINS RENTALS NORTHVILLE

Hello and Merry Christmas Nowels Lumber & Coal Co.

Sibley's Suits Shop Give Her... French Beauty in a slip by KAYSER LINGERIE

SOUTH LYONS' CHRISTMAS MIDNIGHT MADNESS SALE! 9 p.m. to 12 Midnight SATURDAY, DEC. 23rd No Mark Up To Mark Down REAL DISCOUNT PRICES

JANUARY PRICES BEFORE CHRISTMAS... Drawings In Every Store At 11:30 p.m. Saturday BE A MIDNIGHT SHOPPER & SAVE AT Barr's, Gambie's, Dancer Co., Slauter's Variety, Ender's Drug

IN OUR CHURCHES

OUR LADY OF VICTORY PARISH
Rev. Father John Wittstock
Masses—7:00, 9:30 and 12 noon.
Weekday Masses—8:15.
Holy Day Masses—6, 9 and 7:30.
Perpetual Help Devotions—
every Wednesday, 7:30 p.m.
Confessions every Thursday,
4:30 to 5:15 p.m., every Sat-
urday, 10:30 to 11:30 a.m. and
7 to 8 p.m.
Religious instructions: Saturday,
9:30 to 10:30 a.m.; Grade
school children: Thursday, 4
to 5 p.m.; High school pupils:
Sunday, 1:30 to 2:15 p.m.
Altar Society meeting—every
Wednesday before the third
Sunday of the month.
Mothers' Club—8 p.m., first
Tuesday of each month.
Men's Club—third Thursday of
each month, 8 p.m.
CVO high school group—Sec-
ond Wednesday of each month,
7:30.

WILLOWBROOK COMMUNITY CHURCH
Evangelical United Brethren
Meadowbrook at Ten Mile Road,
Northville, Michigan
Rev. Marvin E. Rickert,
Minister
Phone GR-64626
Thursday, 9:30 a.m. Fellowship for Sun-
day School Christmas
celebration.
Friday, 10:30 a.m. Junior Fellowship
class.
Saturday, 10:30 a.m. Senior Catechism
class.
Sunday, 10:30 a.m. Junior Catechism
class.
1:30 p.m. Christmas service
sponsored by the Sunday Church
School.
Mothers' Club—8 p.m., first
Tuesday of each month.
Men's Club—third Thursday of
each month, 8 p.m.
CVO high school group—Sec-
ond Wednesday of each month,
7:30.

REORGANIZED CHURCH OF JESUS CHRIST OF LATTER DAY SAINTS
Schoolcraft Rd. at Brader
Robert Burgess, Pastor
Michigan
Church FI 9364
Parsonage FI 93140
Rev. B. J. Packow, Pastor
H. R. Kew, Principal,
FI 9203
Thursday, 8:00 p.m. Choir rehearsal.
8:00 p.m. Ladies Auxiliary.
Friday, 9:00 a.m. 1st year Confirmation class.
10:30 a.m. Children's Christ-
mas practice.
11:00 a.m. 2nd year Confir-
mation class.
Sunday, 8:00 a.m. Morning Worship
8:15 a.m. Sunday school and
Bible classes.
10:30 a.m. Morning Worship
10:45 a.m. Children's Service
8:30 p.m. Candlelight Service
Monday, December 25:
10:30 a.m. Christmas Day ser-
vice.

SALEM CONGREGATIONAL CHURCH
Dickenson Salem
Jack Barlow, FI 9-288
Sunday:
10 a.m. Morning worship.
11 a.m. Sunday school.
7:30 p.m., Worship.
7:30 p.m. Midweek prayer
and Bible Study.

NOVI METHODIST CHURCH
Rev. J. C. Mevin
Phone Brighton, ACademy 7-7781
Sunday:
9:45 a.m. Worship service
11 a.m. Church school.
7 p.m., Youth Fellowship.
Wednesday:
7:30 p.m. Choir rehearsal.
WESG meets third Wednesday
of each month at 11:30 for
luncheon.

ST. JOHN'S AMERICAN LUTHERAN CHURCH
Rev. C. Fox
2225 Gill Road
Dut. Freedom Rd.
and Grand River
GE 4504
9:00 a.m. Church School
10:30 a.m. Morning Worship
Nursery during services.

PRIMITIVE BAPTIST CHURCH
4075 West Maple Road
1/2 Mile West of Orchard Lake
Sunday morning services at
11:00. Elder Levi Saylor and
other elders will speak.
Wednesday:
7:30 p.m. Evening service.
Farmington Christian Science
reading room is open daily
12-4.

ST. JOHN'S EPISCOPAL CHURCH
574 Sheldon Road
Rev. David T. Davies, Rector
Office GL 3-1090
7:45 a.m., Holy Communion
9:00 a.m. Morning Service
and sermon. Holy Communion
third Sunday.
Church School
classes from kindergarten
through the 11th grade. Also
Nursery for little children.
11 a.m. Morning Service
and Sermon. Holy Communion
third Sunday. Church School
through the 9th grade. Also
nursery for little children.

CHURCH OF THE HOLY CROSS (Episcopal)
Hall at Meadowbrook and
Ten Mile
Rev. Jay Coulton, Vicar
Mr. Richard Hansz,
Lay Minister
GA-1451 or GA-1-0434
Sunday:
9:45 a.m. Church service.
Nursery during morning ser-
vice.
11:00 a.m. Church School
1:00 p.m. Morning Service
and sermon.
6:15-8:15 p.m. Evening service.
Office Air Station, Santa Ana,
Calif.

FULL SALVATION UNION
5150 West Eight Mile Road
Rev. James Andrews,
Pastor
Res. and Office Phone FI 9-0055
Saturday:
8 p.m., Evening service
9:45 a.m. Church School, A
Sunday:
8:30 p.m., Worship service
3:30 p.m., Evening service.
Office Air Station, Santa Ana,
Calif.

FIRST BAPTIST CHURCH OF NORTHVILLE
4501 Elwell Mile Rd.
Arnold B. Cook, Pastor
Phone FI 9-2608
Sunday:
10 a.m. Sunday school
11 a.m. Worship hour.
Junior church—ages 6-9.
Primary church, birth to 5 years.
Nursery—birth to 5 years.
6:30 p.m. Youth groups.
7:30 p.m., Evening services
will include recitations by Sun-
day School classes and singing
by the adult choir.
1st Tuesday—7:30 p.m.,
Workers' conference.
3rd Tuesday—7:30 p.m., La-
dies' Unity Circle.
Wednesday:
7:30 p.m. Mid-Week prayer
8:30 p.m. Senior Choir
2nd Thursday—12 noon
Mission banquet
EMMANUEL BAPTIST CHURCH
38840 W. 6 Mile near Haggerty
Pastor Ewan Seltowair
3515 Mark Twain—Detroit 28
Tiffany 6-2399
10 a.m., Sunday School, all
ages.
11 a.m., Morning Worship.
6 p.m., Baptist Training Un-
ity.
7 p.m., Evening service.
1:30 p.m., Mid-week prayer
service, Wednesday.

NOVI METHODIST CHURCH FULL GOSPEL MISSION
Grand River Avenue
Rhoda Shrader, Pastor
Sunday School, 10 a.m.
Worship service following.
Evening services Sunday and
Tuesday at 7:45.

EVANGELICAL LUTHERAN Church of the Epiphany
A MISSION OF THE ULCA
Rev. John W. Miller, pastor
GL 5-1191
Worshipping at 1150 Ann Arbor
Trail, Plymouth
Sunday:
9:45 a.m. Church school
11:00 a.m. Worship service

from the PASTOR'S STUDY

By the Rev. B. J. Packow, Pastor
St. Paul's Lutheran Church of Northville



O holy night...

As the radiance of His great love shines down upon us, may your hearts be filled with joy and peace this Christmas-time.

Four From Northville Attend Hospital Conference

Northville Electric Shop

Four Northville men were among six Midwest executives from 26 Midwest states partic-
ipating in an American Society of Mental Hospitals Business Administrators Conference Dec. 11-13 at Michigan State University.

Attending the conference were Charles W. Brown and Joseph J. Gill of the Northville State hospital, Anthony D. Drabik, Jr. of the Hawthorne Center and Walter Kentzle of the Plymouth State Home and Training School. The recently organized Society focused on problems of organization and management in their first formal conference, held at MSU's Kellogg Center for Continuing Education.

Regional Governor William Brenner, Richmond, Ind., pointed out that the responsibilities of a mental hospital business administrator are similar to those of an ordinary hospital administrator, but considerably magnified.

Whereas most hospitals are concerned only with short-term physical illness, he said, the mental hospital usually deals with patients on a long-term, perhaps lifetime, basis.

In addition, Brenner noted, the mental hospital also is concerned with physical illness, rehabilitation programs, recrea-

In Uniform

San Diego, Calif. — Marine Pfc. John A. Baggot, son of Michael A. Baggot of 537 Randolph, was graduated, November 28, from the Radio Relay Repair Course at the Marine Corps Recruit Depot, San Diego, California.

The course includes 16 weeks of electricity, eight weeks of basic radar repair and 14 weeks of specialized training in the repair and operation of Marine Corps radio equipment.

Santa Ana, Calif. — Marine Pfc. George L. Howell, son of Mrs. Berthea Howell of 4825 W. Eighth Mile road is serving with the Third Marine Aircraft Wing at the Ft. Tane Marine Corps Air Station, Santa Ana, Calif.

The wing's helicopters, transports and jets provide air support for infantrymen of the First Marine Division at Camp Pendleton, Calif.

HOW CHRISTIAN SCIENCE HEALS

Station 900
WHRV
1600 K.C.
Sunday
Also on CKLW at 9-45

The spirit of Christmas is contagious. Clarion bells and holy music break through the hum of our busy world.

The spell of Christmas calls you! And it makes you want to call others!

Christmas has always affected men this way. First the herald angels bringing their good tidings to shepherds... the star beckoning three Wise Men to Bethlehem. Then Wise Men and shepherds returning from the Manger to thrill others with their strange story of the birth of the King.

Is it enough to answer the call of the carols? Brighten someone's life by sharing the vision. Bring someone with you to worship the Christ.

This someone will understand Christmas better when he sees what it means to you!

Season's GREETINGS

NORTHVILLE OFFICE
Manufacturers National Bank

This Message Sponsored In The Public Interest By:

CLOVERDALE FARMS DAIRY	NORTHVILLE LABORATORIES, INC.	HARRAWOOD'S SERVICE	CHARLES & IVAN ELY
NORTHVILLE LANES	NOVI REKALL DRUG	BRADER'S DEPT. STORE	E.M.R. FOOD MARKET
			THE NORTHVILLE RECORD-NOVI NEWS

Dr. Mudd Replies Mother Misses Children

Dr. C. Mudd:
I don't know what to do, but maybe you can help us.
My wife and I have been married 20 years this Christmas. We have two fine children, a boy and a girl. The youngest, I haven't told them about the missus.
I know if I could get her to a doctor she'd be o.k., but I don't seem to know how to do it.
I can't tell you all the ways she acts funny, like waking up in the middle of the night and just wandering around the house.
I try to tell her something is wrong and she just gets mad and says it's me that's crazy. I don't want the kids to get upset. I haven't told them about the missus.
The missus started going to church a lot, sometimes two and three times a day. I didn't say anything—'t being church and all.
I would be helpful to know your wife's age. There has been a good deal written about the reactions women are supposed to have at the time of the menopause.
There is considerable question as to how much of this reaction is psychological and how much physical.
Some women, and perhaps your wife is one of them, build their lives around their children. When the children grow up and leave home, they suddenly find their lives empty and, to them, meaningless.
The same kind of thing happens to men who retire from work without having prepared themselves for this change in their circumstances.
For many people when facing great difficulties, the vision with which your wife has sought for help in this direction sounds out of character with her. I agree with you that she is a sick woman and needs assistance. She is another matter.
As I have stated on the book in the State of Michigan, it is virtually impossible to provide help for someone who is not so

WARM WISHES FOR A BRIGHT CHRISTMAS THE LITTLE PEOPLE SHOPPE

High on our list of holiday joys is the privilege of greeting our friends and customers. All good wishes to you!

NOEL
We sing out greetings to you, warmly wishing you a joyous Christmas!

RATHBURN
CHEVROLET & OLDSMOBILE

Christmas Greetings

STONE'S AUTHORIZED GAMBLE STORE

Casterline Funeral Home

Day	Book	Chapter	Verses
Sunday	Luke	1	25-35
Monday	Luke	1	18-25
Tuesday	Matthew	2	8-20
Wednesday	Matthew	2	1-12
Thursday	John	1	29-34
Friday	John	1	45-51
Saturday	Acts	3	1-10

IT'S CHRISTMAS TIME AT BRADER'S FOR THE ENTIRE FAMILY!



DO YOUR "LAST MINUTE" CHRISTMAS SHOPPING AT BRADER'S... OPEN EVERY NITE 'TIL 9 P.M.

LADIES' BLOUSES
Ship 'n' Shore, Laura Mae, Sizes 36 to 38. Fancy or Tailored. Slipover and Cardigan styles.
\$298 to \$498

LADIES' SWEATERS
Ban-Len — Bulky — Fur Blend. Many colors.
\$298 to \$798

LADIES' NYLON HOSIERY
Seamless or with seams. Stretchy, Mesh and Pile Silk.
FRUIT OF THE LOOM
from 99¢
BERKSHIRE
from \$135

LADIES' ROBES & DUSTERS
Corduroy — Nylon Prints and Quilted Nylon—Sizes 10 to 20.
\$298 to \$1095

LADIES' GOWNS & PAJAMAS
Cotton — Flannelette and Nylon. Good assortment of sizes and colors.
\$198 to \$398

GIRLS' DRESSES
Just right for the Holidays! Sizes 1-2X — 4 to 6X — 7-14
\$198 to \$498

GIRLS' SWEATERS
Pullover and Button styles. Orton Flat Knit and Bulky Knit.
\$198 to \$498

LADIES' SLIPS
Fancy Lace Trim or Tailored. Nylon Tricot, Dacron and Cotton. Sizes 22-44.
\$298 to \$398

CHILDREN'S HOUSE SLIPPERS AND SLIPPER SOX
INCLUDING FELTS AND LEATHERS
\$100 to \$298

LADIES' HOUSE SLIPPERS
Including Best Style, Suede and Slipper Sox. Some with Fur Trim, Satins — Felts and Shearings.
\$198 to \$395

MEN'S WINTER JACKETS
Short or Long styles. Corduroys — Coats — Polished Cottons. Wools — Nylons — Do-Loons.
The Warmest Gift You Can Give!
\$895 to \$2195
Gift Certificates Available

MEN'S TIES
Gift Boxed. New colors and patterns.
\$100 to \$150

DRESS SLACKS
Wash 'n' Wear Fabrics and Wools. All sizes.
\$495 to \$1195

WHITE DRESS SHIRTS
Wash 'n' Wear Cottons. Convertible Cuffs. Sizes 14 to 17.
\$295

MEN'S HOUSE SLIPPERS
Including Opera, Romeo Styles and Slipper Sox. In Felts, Wools and Leathers.
\$198 to \$550

LADIES' SNO BOOTS
Sizes 4 1/2 to 10 in Grey, White Black and Beige
\$750

BRADER'S

141 EAST MAIN NORTHVILLE

Select Ball Band Rubber Footwear for the Entire Family at Brader's.

BE SURE...INSURE
THE CARRINGTON AGENCY
 PHONE FL-2300
 128 NORTH CENTER
 NORTHVILLE
COMPLETE Insurance SERVICE

TO ALL OUR FRIENDS
C. R. ELY & SONS
 Distributors of Mobilheat

GREETINGS
 My Christmas
 shower its many
 joys on you
 and your loved ones
 and fill your
 hearts with deep
 contentment.

GREEN RIDGE NURSERY

Holy Night
 All hail
 His birth, May
 you experience the
 warmth and peace of the Christmas Season.

THE CARRINGTON AGENCY

Merry Christmas
NORTHVILLE LANES

NOVI HIGHLIGHTS...

Mrs. L. Rix presented with a gift of white and gold gowns and matching hat by the church members. Mr. and Mrs. John Tymensky will celebrate their 20th wedding anniversary December 27. Loraine Darling is flying home from midwintery California to spend the holidays with her parents, Mr. and Mrs. Floyd Darling. She will arrive at the airport on Friday morning. Mr. and Mrs. Brent Munro will celebrate their wedding anniversary on Christmas Day. They were married 16 years ago in New Memphis, Illinois by Mrs. Munro's father, Rev. Almar Mueller.

Methodist Church News The church school choir will meet at the home of Mrs. Russell Burton at 7 p.m. Friday for caroling around town. After caroling, they will all return to the Burton home for refreshments.

Treats are in store for all children and teenagers Sunday December 24 at the church school room, 11:00 in the community building.

On Christmas eve, the Cantata, "The Holy Birth" will be given at the Brighton Methodist church at 11 p.m.

Baptist Church News A new ten burner, two oven gas stove has been installed in the new church kitchen by the ladies of the church.

The Sunday School will present a Christmas program, "The Message of the Bells," Friday evening, December 22 at 7:30 p.m. in the Flint Hill. The program will be directed by Mrs. Eugene Dallas.

Explores Post No. 119 The annual turkey dinner and Christmas party of the Novi Farm Bureau will be held Saturday evening December 16 in the community hall. Approximately 35 were present. Dennis Paquette and his assistant Robert LaFond entertained the guests at a magic show. A big feature of the evening was the arrival of Santa Claus in the person of Harold Miller, with gifts for all the children, after which there was a gift exchange for the adults. Those on the committee were Mesdames Russell and Harold Miller and Luther Rix.

Boy Scouts Troop No. 54 Boy Scouts had their Christmas party in the community building Wednesday evening. After several weeks of work and practice they were ready to present their Christmas skit. Parents and brothers

WILSON MOWER SALES
 43325 W. 12 MILE
 NEAR NOVI ROAD
 FL-9-1164

Wilson Mower Sales
 43325 W. 12 Mile
 Near Novi Road
 FL-9-1164

It's CHRISTMAS!
 We wish to extend
 our hopes for your great
 happiness
 on this joyous day

D & C STORE
 NORTHVILLE

Merry Christmas
 We sing out our
 Christmas greeting
 to you.

GOOD TIME PARTY STORE

Merry Christmas
 Best wishes for a day
 filled with happiness.

FRED GOTTS
 Builders - Contractors

Merry Christmas
 ...and many thanks to all you wonderful people whose
 friendship has been so heartwarming during the year.

C. HAROLD BLOOM INSURANCE

Joy to the world
 In the true spirit of the
 season, may joy fill your heart.

NOVI AUTO PARTS

MERRY CHRISTMAS

DEKAY ELECTRIC

Leo Kalala has been appointed to the office of assistant cashier of Manufacturers National Bank of Detroit. He is presently assigned to the Commercial Banking department, Kalala, who studied business administration at the University of Detroit, has since studied at the University of Michigan and the American Institute of Banking. He served in the Armed Forces from 1946 to 1948. He is a member of the Society of Residential Appraisers and the Knights of Columbus.

IT'S CHRISTMAS
 ...and may the joys
 of Christmas abound
 in your heart always.

G. E. MILLER SALES & SERVICE

COMPARE BEFORE YOU BUY... AND NOW'S THE TIME!!!

FLAMELESS ELECTRIC DRYER DAYS

SPECIAL INSTALLED PRICE INCLUDES WIRING

DETROIT EDISON



CLOVERDALE FARMS DAIRY

HOLIDAY ICE CREAM

BLACK CHERRY RUM
 FROZEN PUDDING
 PEPPERMINT STICK
 HOLIDAY CHERRY
 EGG NOG

69c
 1/2 GAL.

TREE CENTER
PINTS 39c

ICE CREAM CHRISTMAS TREES BOX OF 4 **69c**

DAIRY PRODUCTS

WHIPPING CREAM . . . 1/2 PINT 35c
 MILK 1/2 GAL. 38c
 SOUR CREAM PINT 45c
 COTTAGE CHEESE LB. 19c

CLOVERDALE FARMS DAIRY
 134 N. CENTER - NORTHVILLE
 447 FOREST PLYMOUTH 34211 PLYMOUTH RD. LIVONIA 28546 FORD RD. GARDEN CITY

Break Ground for Ladywood Addition

Ladywood high school in the present student body of 400 is to be expanded to meet the increasing demand for enrollment. The new building will be an addition of 100,000 square feet. The new building will be an addition of 100,000 square feet. The new building will be an addition of 100,000 square feet.

"SUPER-RIGHT" QUALITY-NONE FINER-FANCY, YOUNG

Christmas TURKEYS

A SIZE TURKEY FOR EVERY FAMILY

20 to 24 Pound Sizes 27c LB.
10 to 15 Pound Sizes 33c LB.
16 to 19 POUND SIZES LB. 29c
6 TO 9 POUND SIZES LB. 37c

YOUR GUARANTEE OF QUALITY

SHRIMP
 1 1/2-LB. BAG **2.29**
 3-LB. BAG **4.49**

Stuffed Turkeys LB. 49c
Pork Sausage "SUPER-RIGHT" 3 1/2-LB. 1.00

ARMOUR'S STAR-8 TO 11-LB. SIZES

Smoked Hams
 13 to 16 Pound, Skinned
 SHANK PORTION **43c**
 BUTT PORTION **53c** WHOLE HAM **49c**

"Super-Right" Quality, Skinless Semi-Boneless FULLY COOKED HAMS

WHOLE OR HALF **67c**
 10 TO 12 POUND SIZES
 No Center Slices Removed

WISCONSIN CHEESE
Sharp Cheddar LB. 69c

LARGE EGGS
 SUNNYBROOK GRADE "A" **49c DOZ.**

Ice Cream HALF GAL. CARTON **79c**

Green Peas 5 16-OZ. CANS 99c

Ripe Olives 4 9-OZ. CANS 79c

A&P Pumpkin 2 29-OZ. CANS 29c

Wonderfoil 2 25-FEET ROLLS 49c

Green Peas 5 16-OZ. CANS 99c

Kernel Corn 7 16-OZ. CANS 1.00

Mandarin Oranges . . 2 11-OZ. CANS 39c

Vlasic Sweet Snax . . . 2 8-OZ. BTL. 35c

Milani's 1890 Dressing 2 8-OZ. BTL. 49c

Alcoa Aluminum Foil . 25-FEET ROLL 29c

Fresh Kosher Dills BOND'S 2 8-OZ. JAR 29c

Jack Frost Sugar
 10-X or Light or Dark Brown
2 1-LB. BOXES 29c

Canada Dry Ginger Ale
 or Sparkling Water
2 28-OZ. BTL. 39c Plus 25c Deposit

Baker's Chocolate Chips 6-OZ. 19c

Delhi Figs WHOLE OR BROKEN 5 300 CANS 99c

Dailey Candied Midgets 14-OZ. JAR 39c

Royal Lusters WORTHMORE 22-OZ. B&B 49c

Yuban Coffee 1-LB. CAN 73c

Margarine 1-LB. CAN 42c

Chocolates . . 4 LB. BOX 1.99

WARWICK ASSORTED DARK AND MILK
Chocolates . . 5 LB. BOX 2.99

Cut Rock Candy WORTHMORE 11-OZ. 29c

Spice Drops WORTHMORE RED OR GREEN 14-LB. B&B 29c

Royal Lusters WORTHMORE 22-OZ. B&B 49c

AP Super Markets

FRUIT CAKES
 3-POUND SIZE Light Cake **2.95**
 1 1/2-LB. LIGHT CAKE **1.49**
 2 1/2-LB. LIGHT CAKE **3.99**
 2 1/2-LB. CAKE **1.53**

