

Zone Two
Clarkston, Springfield
and Independence
Townships

Independence Twp Library
6495 Clarkston Rd
Clarkston, Me 48016

The Reminder

A FREE CIRCULATION WEEKLY NEWSPAPER

September 20, 1979

Volume 3

The Clean Up Begins

State Senator Kerry Kammer (R) Meets DNR officials Pete Ollila and John Shauver as they begin cleaning up hundreds of barrels filled with industrial waste in Springfield Township.



Photos by Carol Bazarini

It's a Pleasure to Shop and Save at

FOOD TOWN

SUPER MARKETS

M-24 at Drahner Rd.
OXFORD
•
OPEN SUNDAYS

5529 Sashabaw Rd.
PINE KNOB PLAZA
Cor. Maybee Rd.
OPEN SUNDAYS

2886 Highland Rd.
HYLAND PLAZA
Cor. Duck Lake Rd.
OPEN SUNDAYS

M-59 at U.S. 23
HARTLAND
•
OPEN SUNDAYS


2025 Rochester Rd.
HAMPTON PLAZA
•
OPEN SUNDAYS

Everyday Low Prices • Friendly Service • Satisfaction Guaranteed

QUANTITY RIGHTS RESERVED

MONDAY, SEPTEMBER 17, 1979 THRU SUNDAY, SEPTEMBER 23, 1979

STORE HOURS: MON. - SAT. 8-10 SUNDAY 10-5

DEL MONTE TOMATO JUICE 55^c <small>46 OZ. CAN</small>	MOTTS APPLE SAUCE 67^c <small>35 OZ. JAR</small>	ELF WAFFLE SYRUP 59^c <small>24 OZ. BTL.</small>
BATHROOM SNO-BOL CLEANER 44^c <small>18 OZ. BTL.</small>	DINTY MOORE BEEF STEW 95^c <small>24 OZ. CAN</small>	GENERAL ELECTRIC LIGHT BULBS  <small>Pkg. of 4 - Inside Frosted! Choice 60, 75, 100 Watts</small> \$1.09

BRAWNY
JUMBO TOWEL

46^c
JUMBO ROLL

ALL FLAVORS
JELL-O GELATIN

19^c
3 OZ. PKG.

HOLSUM
GRAPE JELLY

55^c
2 LB. JAR

PRODUCE

U.S. NO. 1 CALIFORNIA

HEAD LETTUCE

24 SIZE HEAD

49^c

U.S. NO. 1
SPANISH ONIONS
 U.S. NO. 1 WASHINGTON STATE
BARTLETT PEARS
 U.S. NO. 1
MC INTOSH APPLES

LB. **19^c**

LB. **39^c**

3 LB. BAG **79^c**

EARLY GARDEN
DEL MONTE SPINACH
15 OZ. CAN
39^c
 MEDIUM
FLAVORITE RICE
2 LB. PKG.
49^c
 EL PASO
TACO DINNER
10 1/4 OZ. PKG.
89^c
 DAYTIME
JOHNSON DIAPERS
24 CT. BOX
\$2.29
 POST
40% BRAN FLAKES
16 OZ. BOX
78^c
 TEA
NESTEA INSTANT
3 OZ. JAR
\$1.79

BAR
IVORY SOAP
4-3 1/4 OZ. BAR PKG.
55^c
 LUNCHEON
MARDI GRAS NAPKINS
140 CT. PKG.
49^c
 T.V. TIME
POP-CORN
4 LB. BAG
97^c
 ALL PURPOSE
BO PEEP AMMONIA
64 OZ. BTL.
59^c
 SHOUT
STAIN REMOVER
12 OZ. AERO
99^c
 CHICKEN OF THE SEA LIGHT
CHUNK TUNA
9.25 OZ. CAN
98^c

VLASIC NO GARLIC
DILL PICKELS
32 OZ. JAR
69^c
 TOMATO
ELF CATSUP
14 OZ. BTL.
29^c
 LEMON
REALEMON JUICE
32 OZ. BTL.
73^c
 PIECES & STEMS
RICHELIEU MUSHROOMS
4 OZ. CAN
39^c
 VEGETABLE
PURITAN OIL
16 OZ. BTL.
69^c
 CHOCOLATE
NESTLES QUIK
2 LB. BOX
\$2.18
 JOHNSON
LEMON PLEDGE
7 OZ. AERO
89^c
 RIVAL
DOG FOOD
26 OZ. CAN
35^c
 PRINCE
LASAGNA NOODLES
1 LB. BOX
59^c
 HELLMANN'S
BIG H SAUCE
12 OZ. JAR
59^c
 OVEN-FRESH HONEY GLO
WHEAT BREAD
1 LB. LOAF
49^c
 OVEN-FRESH ALL NATURAL
WHITE BREAD
1 LB. LOAF
59^c

TYSON MIXED
FRYER PARTS

33^c
LB.

**FOOD
TOWN**

STORE HOURS:
OPEN DAILY 8 A.M. to 10 P.M.
SUNDAYS 10 A.M. to 5 P.M.
SALE DATES
SEPT. 17 THRU SEPT. 23, 1979

- We Redeem Food Stamps
- We Reserve the Right to Limit Quantities

VISIT OUR **AMBASSADOR
GREETING CARD DEPT.**

U.S.D.A. CHOICE BONELESS

CHUCK ROAST

SOLD AS
ROAST ONLY

\$1⁵⁹
LB.

SLICED

T.A.V. BACON

12 OZ.
PKG.

99^c

ALL MEAT

ECKRICH BOLOGNA

\$1⁵⁸
LB.

WISCONSIN MEDIUM SHARP

CHEDDAR CHEESE

\$1⁷⁸
LB.

MUSTARD STYLE

POTATO SALAD

58^c
LB.

CO-JACK CHEESE

\$1⁷⁸
LB.

WHITE MEAT

CHICKEN ROLL

\$1⁷⁸
LB.

SKINLESS

**PESCHKE
WIENERS**

12 OZ.
PKG.

88^c

T.A.V.

**COOKED
HAM**

8 OZ.
PKG.

\$1²⁹

U.S.D.A. CHOICE ENGLISH &

**ARM
ROAST**

\$1⁵⁹
LB.

U.S.D.A. CHOICE

**CHUCK
STEAK**

\$1⁴⁹
LB.

U.S.D.A. CHOICE

**ROUND
STEAK**

\$1⁹⁸
LB.

U.S.D.A. CHOICE

**RUMP
ROAST**

\$2³⁹
LB.

U.S.D.A. CHOICE

**SIRLOIN TIP
STEAK**

\$2⁵⁹
LB.

U.S.D.A. CHOICE

**T-BONE
STEAK**

\$3⁷⁹
LB.

U.S.D.A. CHOICE

**SIRLOIN
STEAK**

\$2⁷⁹
LB.

CAMPBELLS SOUP

**CHICKEN
NOODLE**

21^c

10 3/4 OZ.
CAN

LAUNDRY

**ERA
DETERGENT**

99^c

32 OZ.
BTL.

BETTY CROCKER

**CAKE
MIXES**

55^c

DEVILS
FOOD
WHITE
YELLOW
18 1/2 OZ.
BOX

DAIRY

SUNNY DELIGHT

**CITRUS
BLEND**

64 OZ.
BTL.

66^c

BAYS

ENGLISH MUFFINS

12 OZ.
PKG. **44^c**

KRAFT MIDGET

LONGHORN CHEESE

12 OZ.
PKG. **\$1²⁹**

QUARTERED BUTTER

LAND-O-LAKES

1 LB.
CTN. **\$1⁵⁵**

KRAFT SLICED NATURAL

SWISS CHEESE

8 OZ.
PKG. **98^c**

CASINO

MUNSTER CHEESE

8 OZ.
PKG. **98^c**

FROZEN

FLAVORITE

**ORANGE
JUICE**

12 OZ.
CAN

58^c

MR. G.

STEAK FRIES

2 LB.
PKG. **37^c**

BANQUET

BREAD DOUGH

5 LB.
PKG. **89^c**

BANQUET DINNER

MACARONI & CHEESE

2 LB.
PKG. **99^c**

BIRDS EYE

CUT CORN

10 OZ.
PKG. **33^c**

MORTON

HONEY BUNS

9 OZ.
PKG. **49^c**

editorial page

contents

5

Clarkston Community Historical Society's 5th annual Crafts and Cider Festival is this weekend.

7

Toxic Wastes—What do we do with them? One company has an answer.

15

Independence wetland subject of pow-wow as people organize to save it.

The Reminder

USPS 386-750
A FREE CIRCULATION WEEKLY
NEWSPAPER SERVING CLARKSTON,
INDEPENDENCE AND SPRINGFIELD.

Member in good standing of the
Shopping Guides of Michigan
National Association of
Advertising Publishers
Suburban Newspapers of America

Published every week by The Reminder - Zone 2 Inc.,
8062 Ortonville Rd., Clarkston, MI 48016, Phone
625-9346. Controlled Circulation. Postage Paid at
Clarkston Mi.

MIKE WILCOX, Publisher
Kathy McReynolds, Office Manager
Marilyn Bridgeman, Sales Manager
Betty Kratt, Zone 2 Sales
Carol Balzarini, Government Editor

Shindler, Stablex Offer Interesting Parallels

If you're not concerned about the environment and its effects upon your health, then you might want to skip this issue. Because in this issue the continuing saga of Springfield's contaminated well water is updated and a special report on Stablex, a company that would like to build a waste disposal system near Holly is profiled.

The two stories, although quite different in scope, deal with the problems of toxic chemicals and what to do with them.

The Nicksons of Shindler Road decided to allow waste haulers to dump barrels of toxic chemicals onto their swampy acreage. At the time, nearly ten years ago, it seemed like a good way to make some extra money. Today, the barrels are responsible for contaminating the neighborhood's well water.

If there would have been an easily accessible toxic waste disposal system available at the time—or even now, its very possible those wastes would not have ended up in Joe Nickson's backyard.

That's what Stablex wants to provide—a sophisticated process that will take our industrial waste and turn it into safe rock-like materials.

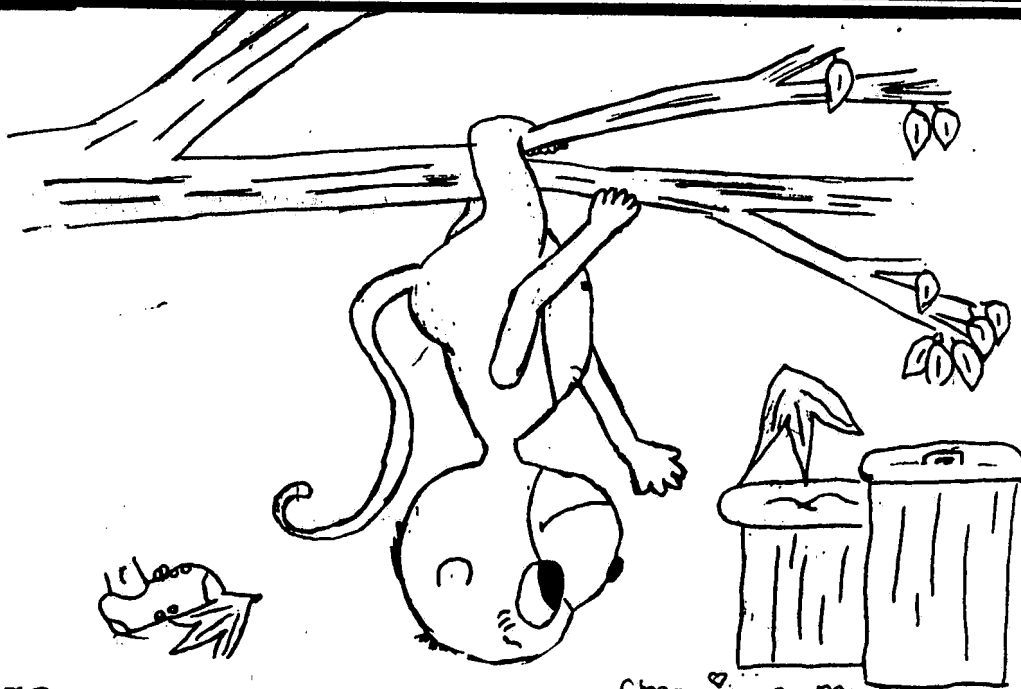
But, local residents aren't so positive that the Stablex process is environmentally safe. Some fear the very same thing that happened in Springfield—contamination of well water.

There is one common denominator that everyone seems to agree with. This area (metropolitan Detroit) is in immediate need of a toxic waste disposal system. One cannot blame the residents near the proposed Stablex site. No one wants a waste plant in their backyard. But the need is overwhelming, and the State with its numerous agencies and commissions ought to see that one is built soon, whether it be Stablex or another firm, the Holly Area or elsewhere.

Mike Wilcox

Words of Wisdom

It seems as though every time you slip on a banana peel the majority of the garbage still lies ahead.



Letters

Independence A Good Place to Call Home?

An appealing landscape, proximity to I-75, abundant recreational and cultural amenities, as well as the historic charm of Clarkston make it a natural magnet for the best in residential and commercial development.

This attractive image seems sure to generate a promising future. Suddenly, an unprecedented hazard jeopardizes this hopeful potential.

The Edward C. Levy Co., a large Detroit cement manufacturer intends to transform 517 acres at the very heart of the township into the barren landscape of a vast gravel mine operating for at least the next 23 years. This would be no short-term, remote, small, "run-of-the-mine" pit, capable of distributing no more than its closet neighbors. Rather, it would directly abut our two parks, involve major roads and route its truck traffic down I-75 as far as Clawson.

What PRICE would the local residents pay for the profit the Levy Company would make by taking millions of dollars worth of gravel out of this area?

The mining area would be highly visible, spreading like a bleak, ugly rug in the whole valley beneath the surround-heights along Perry Lake Road, Sashabaw, Independence Oaks Park, and Pine Knob.

It would wipe out the plants and animals of the uniquely unspoiled Clinton River headwaters adding silt and pollution at the river's source which would impact

destructively down stream along the water course.

Our roads would become a nightmare for local drivers and commuters. Levy haulers would dominate I-75 at the rate of a truck every five minutes of every working day.

Our parks and Senior Citizen's Center would acquire an intolerable neighbor and suffer the harassments of noise, dust, fumes, and an eyesore landscape. Characteristic of some pits which have operated in the Township.

Affected would be the quality of life of township residents; changed would be much of the character of this community.

For this quarter century of downgraded environment and property values, deterioration of our parks, damage to our roads by huge trucks and hassle to our drivers... What Would We Gain?

Why should we accept this disasterous intrusion when, for a minimal .3 mill for 5 year tax (For the average homeowner less than the replacement cost of one gravel-cracked windshield), we can bring a beautiful and useful eighty-acre piece of land into township hands and out of the grasp of the Levy Company?

Let's say a big YES to the millage on October 16 which will give us the power say a big NO to the countless problems that would result from the inappropriate use of this property planned by the Levy Company.

J. M

special events

Publicity chairpeople please note:
Send all coming events information
to The Reminder, 8062 Ortonville Rd.,
Clarkston 48016



Festival promoters during the Labor Day parade.

Clarkston Festival This Weekend

Sixty-Three people will show their crafts at the Fifth Annual Crafts and Cider Festival sponsored by the Clarkston Community Historical Society, Friday, Saturday and Sunday September 21, 22 and 23 in the Village Park.

That is quite a few more than the society has had in previous years, according to Jennifer Radcliffe, President of the historical society.

And the biggest emphasis, she said, was in getting local people to display. Members of the society have contacted most of the area's craftspeople and many of them have agreed to display their crafts along with some unusual and good talent from other areas in Michigan and surrounding states.

There will be acid etching on glass, hand wrought gold and silver jewelry, Japanese Bunka, demonstrations in the art of painting Christmas tree ornaments, Russ Henckel (the honey man) who will have his active hive on display, a blacksmith working his forge and many other displays and demonstrations.

Several community organizations have food booths, along with the traditional cider, apples and doughnuts that will be served throughout the festival.

Proceeds from the festival will go towards the purchase of library materials and several other projects including the preservation of township records that date back to 1850-51.

Mrs Radcliffe said the festival always seems to bring a lot of people to the village.

"I thing the thing that is appealing is that it is community-wide," she added. It brings together people from all over to enjoy a festival in a celebrative, joyous atmosphere.

Bloodmobile Here October 1

The Clarkston Community Womens Club will be sponsoring the Red Cross Bloodmobile, Monday, Oct. 1, from 2-8 p.m. at the Clarkston Community Methodist Church on Walden Road. Appointment or walk-ins are welcome. Call 623-1711 for more information.

Library Friends to Meet

Friends of Independence Township Library will have their next meeting on Thursday, Sept. 27, 7:30 p.m. The location will be the Township Library, 6495 Clarkston Rd.

The public is invited to attend and to also meet the new librarian, James Fidler, during the next meeting.

For more information, call Chris Shull, 625-3250. Refreshments will be served.

CHS Band Has Busy Schedule

The Clarkston High School Marching Band is currently in preparation for one of its busiest fall seasons of performances and competitions. Preparations have been under way since the 5 day band camp at Grand Valley State College in late August. The 90 member corps-style band rehearses during the class day, as well as many hours after school, with a view toward maintaining a high standard of achievement.

In addition to the fall varsity home football games, the band will appear at contests sanctioned by the Michigan Competing Band Directors Association, C.M.U.'s annual Marching Band Symposium, W.M.U.'s Cavalcade of Bands, and the Greater Oakland Activities League festival at Rochester High School.

The bands schedule of appearances includes: C.M.U. Symposium Sat., Sept. 22; Clarkston Invitational, C.H.S. Athletic Field, Sat., Sept. 29; Michigan Invitational, Atwood Stadium, Flint Sun., Oct. 7; W.M.U. Cavalcade of Bands Sat., Oct. 13; Bridgeport Open, Bridgeport H.S. Athletic Field Sat., Oct. 20; G.O.A.L. Marching Band Festival, Rochester H.S. Stadium Sat., Oct. 27.

On Saturday, September 29 the Clarkston Band Boosters are sponsoring the 2nd annual Clarkston Invitational, featuring twelve Michigan high school bands in judged competition.



Moffat

Conservatory Features Pianist

The Clarkston Conservatory of Music will celebrate its twentieth anniversary with a concert given by Denis Moffat, pianist.

Moffat will perform at Colombiere Center on Sunday, September 30, at 3:30 p.m.

Moffat was a Fulbright Scholar at the Paris Conservatory, a winner at the Barcelona competition, and is currently an instructor at the University of Chicago.

He appears at the Clarkston Conservatory of Music as an artist-in-residence on a grant for the Michigan Council for the Arts.

Moffat will also conduct a master class at the conservatory on Saturday, September 29, from 10-12 and from 2-4 for piano students. The public is also welcome to attend.

Tickets for the anniversary concert are available at the Conservatory priced at \$4 for adults, \$2 for students.

Hypnotist to Demonstrate

The Clarkston Community Womens Club will hold its 1st meeting Sept. 20, at 7:30 p.m. at ic. Guest will be Linda Atkins, hypnotist from Waterford. She will demonstrate and explain her skills in helping people cope with their problems on dieting and smoking, etc.



**20th ANNIVERSARY
CONCERT**

DENNIS MOFFAT, Pianist


COLOMBIERE CENTER

SEPTEMBER 30, 1979

3:30 p.m

\$4 Adult \$2 Student

WE'RE GLAD YOU ASKED!



**With
Lew Wint
Funeral Director**

Lewis E. Wint
Funeral Home
Clarkston

**HOW CAN I HELP A CHILD
UNDERSTAND THE REALITY
OF DEATH?**

It is important to realize that children differ in their ability to understand and accept the fact of death.

When the death is a member of the immediate family, a child should be included in the activities and preparations for the funeral. The way in which adults react during this time is the greatest influencing factor in teaching the child the accepted manner of learning to live with death.

Questions often arise in their minds. These are to be encouraged and answered with a loving concern for the sensitivities of the child. Explain that it is all right to feel sad and to cry, to feel lonely and hurt. Point out, however, that death is real and irreversible. Avoid the fairy stories and white lies which will only confuse and disillusion the child.

Re-living the happy memories involving the deceased should be encouraged. Statements of sincere religious beliefs can offer comfort to a child with a religious upbringing. Your pastor, priest or rabbi wants to be of help at such times.


Sometimes we can be of personal assistance. Remember, your concerns are ours, too.

*We Commend the Commitment to
Excellence of the*

OCEANIC

39,241 tons

**on her gala
winter cruises
to the Caribbean**

From our own experience and the enthusiasm of our clients, we can safely say the OCEANIC is unique. No other ship has her consistent adherence to high cruise standards, superb cuisine and deft professionalism. Her friendly Italian crew and an atmosphere both elegant and carefree are part of her proud tradition.

With capacity limited for the winter season, the OCEANIC has even more room for an expanded program of activities in the beautiful lounges and on vast outdoor areas featuring the all-weather Deck with retractable Magrodome roof. From 3 orchestras, discotheque, Continental Revues to Ship and Shore Golf...everything's here for your cruising pleasure! All double cabins have 2 lower beds. Panamanian Registry.

8 WINTER CRUISES FROM NEW YORK

DEC. 20-13 DAYS-5 PORTS	FEB. 9-16 DAYS-7 PORTS
JAN. 2-12 DAYS-5 PORTS	FEB. 25-13 DAYS-6 PORTS
JAN. 14-13 DAYS-6 PORTS	MAR. 9-11 DAYS-4 PORTS
JAN. 27-12 DAYS-5 PORTS	MAR. 20-9 DAYS-3 PORTS

See Us for Rates and Reservations



**CLARKSTON
TRAVEL BUREAU**

6 N. Main, Clarkston, Michigan **625-0325**
 Across from Main Street Parking lot

This Fall make your Color Tour at Bordine's, where You CAN take it with you!

SUPER VALUES AT GREENHOUSE PRICES

Large Specimen Foliage Plants
for Home or Office.

Scheffleras "Umbrella Trees"
6' plants **\$50.00 VALUE**
at Bordine's only **\$39.98** each
Ficus Benjamina "Weeping Fig Tree"
4' to 5' plants **\$45.00 VALUE**
at Bordine's only **\$29.98** each
Rubber Trees
Ficus Decora, F. Doescherii, F. Burgundy
Standard tree form 5' to 6'
\$45.00 VALUE
at Bordine's only **\$29.98** each

Indoor Chrysanthemums

Gorgeous blooms in many colors and
varieties. from **\$2.49** to **\$10.98**

Hardy Mums

Hundreds of perennial mums for those
vacant spots in the garden or to
rejuvenate planters for Fall. Excellent
selection of colors.
\$3.49 each



Select that Large Shade Tree you've always wanted.
Ash, Maple, Locust, Linden, many other fine varieties.

Acres of Evergreens, Shade Trees, Flowering Trees,
Flowering Shrubs to choose from for Fall planting.

RUSSIAN OLIVE SALE

Silver-gray foliage. Fast growing shrubs for a
fast screen effect. Good choice for a wind
screen too! 3' to 4' shrubs Reg. \$9.98 each

FALL SPECIAL \$7.98 each
OR 3 FOR \$21.00 SAVE \$8.94!

Greenview Wintergreen® The Fall Fertilizer!

Fortifies lawns, greens grass fast, develops sturdy
roots. Highly recommended when seeding
new lawns or bare spots.

10,000 sq. ft. bag (35 lb.) Reg. \$14.95
FALL SALE \$11.95

High Quality Grass Seed 20% OFF SALE

All Scotts® and Greenview grass seed
varieties. (Includes Scotts popular
Family, Play, Shady blends.)

Madison Wild Bird Feed Mix

Finest quality millet, milo and sunflower seed that will
attract song birds and other colorful species.

25 lb. bag Reg. \$6.19 **THIS WEEK ONLY \$4.19** each

Bulb Special

Mixed Tulips - package of 25 Reg. \$4.79
SALE \$3.79

1¢ SALE

APPLE TREES - buy one at regular price and get a
second one for a penny.

Standard varieties Reg. \$9.98 each
Dwarf varieties Reg. \$11.98 each
Delicious (Red Chief)
Jonathan
MacSpur
Wealthy
Winesap

Not all varieties in both Standard and Dwarf.

PLUMS - (limited quantity) buy one at regular price
of \$10.98 and get a second one for a penny.

OFFER GOOD WHILE SUPPLIES LAST!



Know what you're buying
when selecting bulbs!

LOOK FOR...

Good Bulb Size and Firmness

Remember that each bulb is essentially next Spring's
bloom. Once you've selected a particular variety for
its time of bloom and flower characteristics, then
look at bulb size within that variety. A larger bulb usually means a stronger, more
vigorous plant and flower. Bulb firmness indicates good internal health and bulb
structure. Soft areas result in deformed blooms or possibly no bloom.

Absence of Diseases and Insects

Bulbs should not have observable physical damage. Diseases and insects attack
bulbs and start deterioration which, after planting, speeds up and stops bulbs from
producing brilliant, long-lasting blooms.

**WISE SHOPPERS COMPARE AT BORDINE'S
WHERE QUALITY COUNTS!**



HOURS: Monday thru Saturday 9 AM to 9 PM; Sunday 10 AM to 6 PM.

Sale ends September 24, 1979



1985 S. Rochester Rd.
1 1/2 Miles N. of M-59
ROCHESTER

BORDINE'S

Better Blooms

GREENHOUSE • NURSERY • GARDEN STORE • FLORIST (Rochester)
LANDSCAPE DESIGN & CONSTRUCTION



8600 Dixie Hwy.
1/4 Mile North of I-75
CLARKSTON

Reminder special report



STABLEX, a safe and environmentally inert product, is structurally sound soon after placement; claim Stablax officials.

But, Do we Want Them? English Firm Will Take Our Toxic Wastes

by Mike Wilcox

The disposal of toxic wastes is not an easy process. Michigan has very few sites that will take the hazardous materials and there have been occasions, rather than shipping them out-of-state, the wastes have ended up in someone's back yard.

"The area where Michigan law is weak, said John Cain, Special Assistant to the Governor, is in the area of transportation—assuring that when a load of chemicals leaves the factory, the load actually ends up where it's supposed to."

He cited an example. "We are now faced with a situation where chemicals leave a factory in Muskegon on their way to say, Illinois, lo and behold, the load doesn't show up in Illinois."

"What one must assume is that, either that truckload of material has been dumped in somebody's back forty or the valve has opened on a back country road somewhere."

The example is not unlike what has happened on Shindler Road in Springfield Township and on DeMode Road in Rose Township where in the late sixties thousands of barrels containing toxic wastes were dumped and have managed over the years to contaminate neighboring well water.

This possibly would not have happened if the state would have had proper disposal facilities. One such facility has been slated, ironically for a site near Holly, only five miles from both the Shindler and DeMode illegal dumps.

Proposed by Stablax Corporation, the author of a process that converts hazardous industrial waste into environmentally inert rock-like material, the dump site, or land reclamation center, as Stablax would prefered to have it called, has met considerable opposition from local government and is currently bottled up in the court

system.

But what it offers and the environmental activities that have occurred in Springfield and Rose have interesting parallels. The following is a blow-by-blow account of the Stablax controversy, since its announcement of planned construction back in February. It includes a huge cost of characters as high as Governor William Milliken to Groveland Township officials to vehemently opposed local residents.

Stablax announced their plans to build a land reclamation center at I-75 and Grange Hall Road in January of 1979, at a cost of 7 million dollars.

According to Stablax officials the process will "safely dispose of otherwise hazardous materials by converting them to a useful end product which will serve not only to help solve Michigan's severe waste disposal problem, but will also offer a much needed solution to the problem of land reclamation." The area on which the plant is proposed has been mined for gravel for a number of years.

The plant will have a capacity of processing up to 500,000 tons per year of industrial waste, making it the largest facility of its kind in the world.

The Stablax process was pioneered in England where three plants are now operating. A fourth plant is being built in Japan and Texas just approved last week, plans for a fifth.

The process, despite continued reassurances from Stablax, came under immediate fire, from residents concerned with environmental safety.

Groveland Township Attorney Thomas Plunkett said the reclamation center may "endanger the drinking water for our township and possibly three of four others."

Plunkett added that the center might create tremendous traffic problems "for the reason that it may

become the source of 500,000 tons of toxic waste per year or perhaps for all the toxic waste of the Midwest and beyond."

Joe DeCovich, a leader of the local opposition, said "it shows utter disregard for proper planning of land use. I can recognize Stablax's desire to construct their plant here. It's convenient to an interstate highway. It's at the nucleus of the General Motors empire; also Ford and Chrysler plants would have access to it."

But, "DeCovich went on, "this is just the tip of the iceberg. One plant-one hole in the ground. There are six or seven other gravel pit operators in the area. Whose to say these operators can't sell their land for the purpose of toxic waste disposal."

And Jose Ortiz, former Groveland Township building inspector voiced concerns about inadequate regulation.

People involved in inspection procedures will "find their hands tied" when it comes to enforcing state regulations. "The state really doesn't have any laws regarding this thing. Even the Environmental Protection Agency, the federal level...there is nothing in black and white to take you down the road to tell you what you can and cannot do."

These are other people made their comments known at a series of meetings that were attended by as many as 500 people.

Stablax tried to lay to rest any fears that the process may be unsafe or may cause contamination of drinking water. Officials cited the successful operation of plants in England and the fact that the process had been tested many times, including once by a laboratory in Ann Arbor.

They also received support from an unexpected local source. George Detkowski owns Waterford Disposal in

Continued on Page 18

Mr. Whistle's Pop Shop

1/2 LITER all flavors 8 PK. DIET & REG. **FAYGO** **\$1.59** Plus Dep.

1/2 LITER 8 PK. **COKE** **\$1.69** Plus Dep.

2580 Dixie Highway 674-3422

Mon.-Thur. 9:30-7:00
Fri. 9:30-8:30
Sat. 9:00-7:00

Won't You Please
Voluntarily Subscribe?
See Page 42

R This Week—John Schofield

R takes a look at the newsmakers—a sultry, provocative, sometimes controversial look at those people who make our world, nation, state, county and community the type of place they are today.

This week R talks to John Schofield, president of the Stablex Corporation, a British industrial waste treatment firm that has proposed to locate a \$7 million dollar facility near Holly.

by Rebecca Roberts

R. Who approached you to look at Michigan as a possible location, and when?

A. In 1977, we announced our third plant in England. This particular announcement was picked up by, among other states, the State of Michigan, who have an office in Europe (the Office of Economic Expansion). This office is trying to attract foreign companies from Japan, and from Europe, into Michigan to create jobs.

R. What happened then?

A. They came to my office in London and asked for a presentation, which I gave them. Then they invited me to Michigan to make a bigger presentation to the Commerce Department and to the Department of Natural Resources. Out of that, everybody said that if the Stablex claims proved out, they would be very interested. The Commerce Department then asked us to draw up specifications for the kind of site we would be looking for. Eventually they (Commerce and DNR) came up with a list of 25 sites. We narrowed the list to five...out of the five we came down to two. We did some additional engineering work on the two, and out of that work, selected Groveland as the best site.

R. The DNR requested that the National Sanitation Foundation test the Stablex product to determine its teaching potential to the area's ground water. Would you comment on that?

A. One of the major automotive manufacturers supplied the NFS with five wastes classified as hazardous. The NFS witnessed our conversion of the wastes to the Stablex product. Their report had this to say: "With adequate site selection and process operation, there is no indication that Stablex-processed automotive wastes would reach significant levels of hazardous inorganic pollutants into the environment when exposed to naturally occurring groundwaters."

R. What are some of the details contained in the reclamation plan?

A. One of our suggestions is that the land be used for a Christmas tree farm.

R. Would you comment on Michigan's proposed state-owned industrial waste disposal facility?

A. I doubt whether such a plant will happen. Where would they get the technology? I would never license the State to use the Stablex technology. If a mistake were made under a state-controlled operation, it would affect Stablex world-wide. Everybody would point to the plant in Michigan, and think the problem lay with Stablex itself.

R. Are you saying that neither here nor abroad, is technology advanced enough to develop a method similar to Stablex?

A. Someone else may be working on it, but, to my knowledge, nobody is close to perfecting a method like Stablex.

R. Do you feel you will be able to meet any criteria that the DNR may impose upon you for meeting permit standards?

A. Anything they want us to do, fine.

R. Did you experience the same local resistance in Japan and England as you have experienced here?

A. Yes, certainly, it's a very human reaction. People understand that wastes have to be disposed of, but they want it over there, not over here.

R. Have there been any accidents in any of the Stablex plants?

A. No, we have never had a single accident, or any injury to an employee. We are fully insured, at extremely low premiums, which is unique in the waste industry.

R. How long will it take to build the facility?

A. Six to twelve months.

R. Do you have an option on another site in case this one doesn't work out?

I'm not prepared to disclose that information.

You'll get even more for **NOW** your hard-earned money!

\$100 MINIMUM CERTIFICATES! HIGHER INTEREST! MORE OPTIONS AND EXTRAS!

REGULAR SAVINGS PLANS

Type of Account	Term	Minimum Amount	Annual Rate	Effective Annual Rate
Passbook Account (Daily Interest)	None	No minimum†	5½%	5.61%
One-year Certificate*	1 year	\$100	6½%	6.66%
2½-year Certificate*	2½ years	\$100	6¾%	6.92%
4-year Certificate*	4 years	\$100	7½%	7.71%
4-year Certificate*	4 years	\$100	Variable Rate**	
6-year Certificate*	6 years	\$100	7¾%	7.98%
8-year Certificate*	8 years	\$100	8%	8.24%

SPECIAL SAVINGS PLANS

Type of Account	Term	Minimum Amount	Annual Rate	Effective Annual Rate
Retirement Savings Accounts (IRA & Keogh)*	3 years	\$100	8%	8.24%
"Money Market Plus" Certificates*	26 weeks	\$10,000	Earn the highest possible interest! PLUS... we can transfer your interest monthly to a DAILY INTEREST 5½% Passbook Account (compounded quarterly) to earn even more interest! Call for this week's rate.	
Jumbo Certificates*	Variable	\$100,000	Earn special high interest on your investment. Call today for interest rates and terms.	

SPECIAL OPTIONS

1SAVERS CLUB	\$1000 or more in a 5½% Passbook Account means membership in "The Friendly One" Savers Club! You'll receive merchant discounts, no-fee travelers cheques and money orders, and much more! JOIN TODAY!
CHECK-A-MONTH	Invest \$5000 or more in a Certificate Account and you can choose to have your interest mailed directly to you each month during the term of the certificate. It's like extra income... every month!

First Federal Savings of Oakland

Main Office: 761 W. Huron St., Pontiac, MI 48053 313/333-7071
With offices throughout Oakland, Macomb, Lapeer, Sanilac and St. Clair counties.



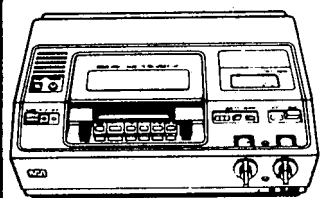
*Federal regulations require a substantial interest penalty for early withdrawal from certificate savings accounts and prohibit the compounding of interest during the term of a Money Market Certificate.
**Earn 1% below average 4-year rate based on yield curve for U.S. Treasury securities as determined by U.S. Dept. of Treasury immediately prior to 1st day of month.

Clarkston Office: 5799 Ortonville Rd., 625-2631
Allan Watson - Vice President Branch Manager

danny paris
tv & appliance

BIGGEST SALE EVENT OF THE YEAR!

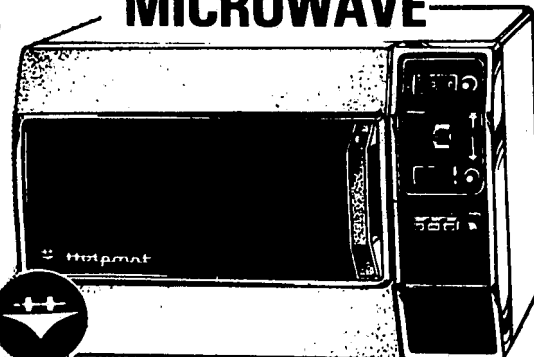
Our Warehouse is packed with America's finest Appliances... \$500,000 Dollars worth of Maytag, KitchenAid, Amana, Magic Chef, Hotpoint, Litton, Jenn Air, Admiral, Hardwick, Magnavox, Zenith, RCA, General Electric and Fisher. If you will need an appliance, T.V., stereo or microwave oven before year end...Now is the time. You'll still get our super service and quick delivery.



Remote pause control
Tape counter with
Memory
2-Hour Video
Cassette included

RCA Model VCT201
VIDEO CASSETTE
\$697

Hotpoint
MICROWAVE



Automatic Temperature Control
3 Power Levels W/Defrost cycle.

\$288

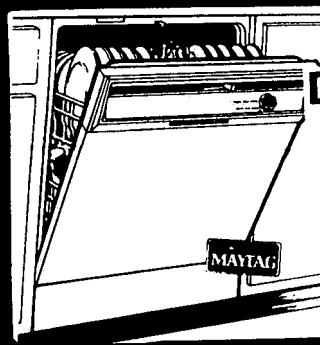
GE PERFORMANCE TV

100% Solid State Chassis
Up-Front Control

\$79



12" diagonal BLACK & WHITE TV/
12XB9104V/Y/T



MAYTAG
DISHWASHER

Model WU100
Regular & Heavy
Wash Cycle
Porcelain Interior

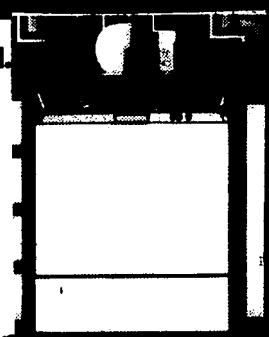
\$349

KitchenAid
DISHWASHERS
People say they're the best

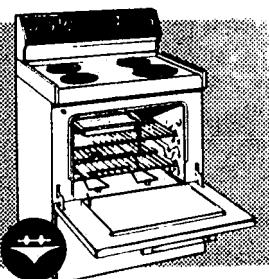
KDC-18

Normal wash, rinse
and hold

\$359



VALUE-PACKED 30" HOTPOINT RANGE!

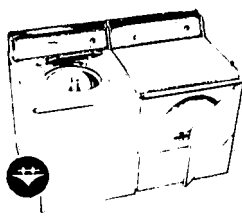


☐ Easy-to-clean 30"
oven-range ☐ Stay-up
Calrod® surface units ☐
Surface unit "ON" light.

Model RB525T

\$229

HOTPOINT
**WASHER &
DRYER**

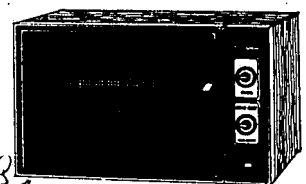


\$444

FOR THE PAIR

Washer Model WLW2100T
☐ 7 Speed Washer ☐ Porcelain enamel top, lid,
and wash basket ☐ Lid switch
Dryer Model DLB1250T
☐ 2 Heat timed drying selections ☐ Porcelain
enamel drum ☐ 4 Venting options

**MAGIC
CHEF
MICRO
WAVE**



35 Minute dial timer
Sealed in smooth cook shelf

\$279



danny paris
tv & appliance

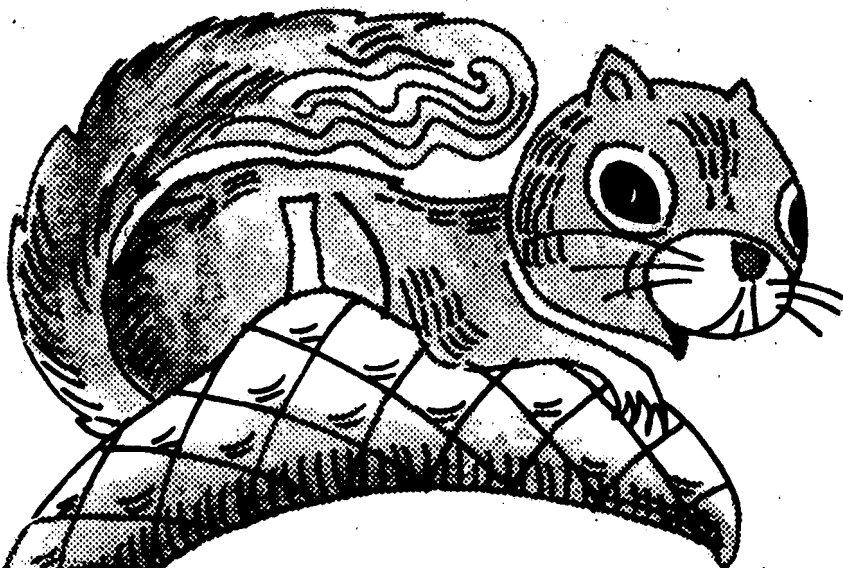
90 DAYS
SAME AS CASH

3460 FLORADALE ST.
IN DRAYTON PLAINS, AT WALTON AND DIXIE

674-4621

**WE WELCOME
YOUR CREDIT
PURCHASES**

OPEN SUN.
12-5
DAILY 9-9
SAT. 9-5



Fall notes

HOT DONUTS
FRESH CIDER - no
 preservatives
FALL DECORATIONS
JAMS JELLIES
RELISHES HONEY
MAPLE SYRUPS
BULK POPCORN
GOURDS

Something remarkable is happening all over the place. It's starting to be Autumn. Leaves are turning to glorious shades of red and gold. The air is crisp and brisk. It's time for football, the World Series and the.....

FALL OPENING OF THE APPLE & CIDER BARN

OPENING FRIDAY - SEPT. 21st-3 p.m.

COMING TO THE CIDER BARN ON OCT. 13 & 14

**GIANT ARTS, CRAFTS
& ANTIQUES SHOW**

DEALER INQUIRIES NOW BEING ACCEPTED
 CALL KAREN RITTER AT 625-4740

Sip a cup of cider
 while you enjoy the
 atmosphere of antiquity
 of days gone by

WEEKEND HOURS:
 SATURDAY AND SUNDAY
 SEPTEMBER 22 & 23
 10 a.m. to 9 p.m.



Ritter's Farm Markets

6684 DIXIE 625-4740



Springfield Declared Emergency Situation

by Carol Balzarini

Less than 24 hours after the Toxic Substance Control Commission met in Lansing and declared Springfield and Rose Townships an emergency situation, the Department of Natural Resources went into action.

Promptly at 8 a.m. last Thursday, several members of the department were at the Nickson farm on Shindler Road preparing for the arrival of the heavy equipment necessary for removal of the barrels of contaminated waste dumped there.

Also on the scene were State Representative Claude Trim and State Senator Kerry Kammer, both of whom had used their influence to bring about the emergency declaration and to have the funds needed for cleanup made available.

Davisburg attorney E. Leonard Howarth, who represents Mrs. Nickson, was not particularly pleased to see more news people explaining his main interest was in protecting his client from so much publicity. He said he was trying to keep the situation from being turned into a "three ring circus."

Mrs. Nickson, who lives on a fixed income, is being sued by one of her neighbors for \$100 million. Howarth explained the family had originally owned 40 acres but had sold 20 of them. They had used the land as a dump site to supplement their income and pay taxes which have risen from \$26 on 40 acres in 1958 to over \$500 for 20 acres.

people hadn't. He said Mrs. Nickson was blameless, that she had no idea what her husband was dumping. "Joe took care of the business as the head of the family," he explained.

Wherever the blame *does* lie may never be certain. What is certain is the original estimate of 800 surface barrels has been revised upward to 2,000 scattered a quarter mile behind the Nickson home.

Trim, who also refused to blame the family, said there was no estimate as to how many more lay buried. It was county procedure at the time to bury waste. If it had been followed to the letter, all barrels would have been buried.

John Shauver of the DNR Environmental Enforcement Division said a crane, bulldozer and backhoe would be on the site later that day. The solids and liquids would be sorted there and additional samples taken for testing by his department.

Any containers with PCB solids of more than fifty parts per million must go to a hazardous solid waste disposal site somewhere in the United States, those with less than fifty parts per million would go to an approved site in Michigan, but not in Oakland County.

PCB liquids would be stored (not in Springfield

Township) until a site could be established. Other wastes could be safely incinerated.

Shauver said it would take 15-20 days to clear away the surface barrels, "then we start digging and we don't know what's there." He likened the process to an archeological dig where the surface is carefully scraped away a layer at a time.

He further explained the cleanup would not go on in both townships simultaneously. There was one contractor for the surface work and another for the subsurface. Once the surface contractor had completed his work in Springfield he would move on to Rose Township.

Shauver said Governor Milliken had freed the funds needed for cleanup and they would be transferred to a special fund. He assumed there would be a limit but would not speculate on the amount.

Shauver estimated the 1966-68 dumping period could have been even longer than that from his investigation, but there were no records to rely on.

It was his understanding the hauler was a man from Detroit named Tucker Ford who had reportedly been

Continued on Page 12



A DNR truck loaded with recovery drums.

Interior Expressions DECORATING CENTER

25% Off

All Designer
Hand Prints
Wallcovering

25% Off

All
Style-Tex
Wallcovering

10% Off Everything in Store

Bath Accessories

Framed Mirrors

Paint Supplies

20% OFF

All Exterior
Latex & Alkyd
House Paints &
Exterior Ful-Stain
Semi-Transparent &
Solid-Cote

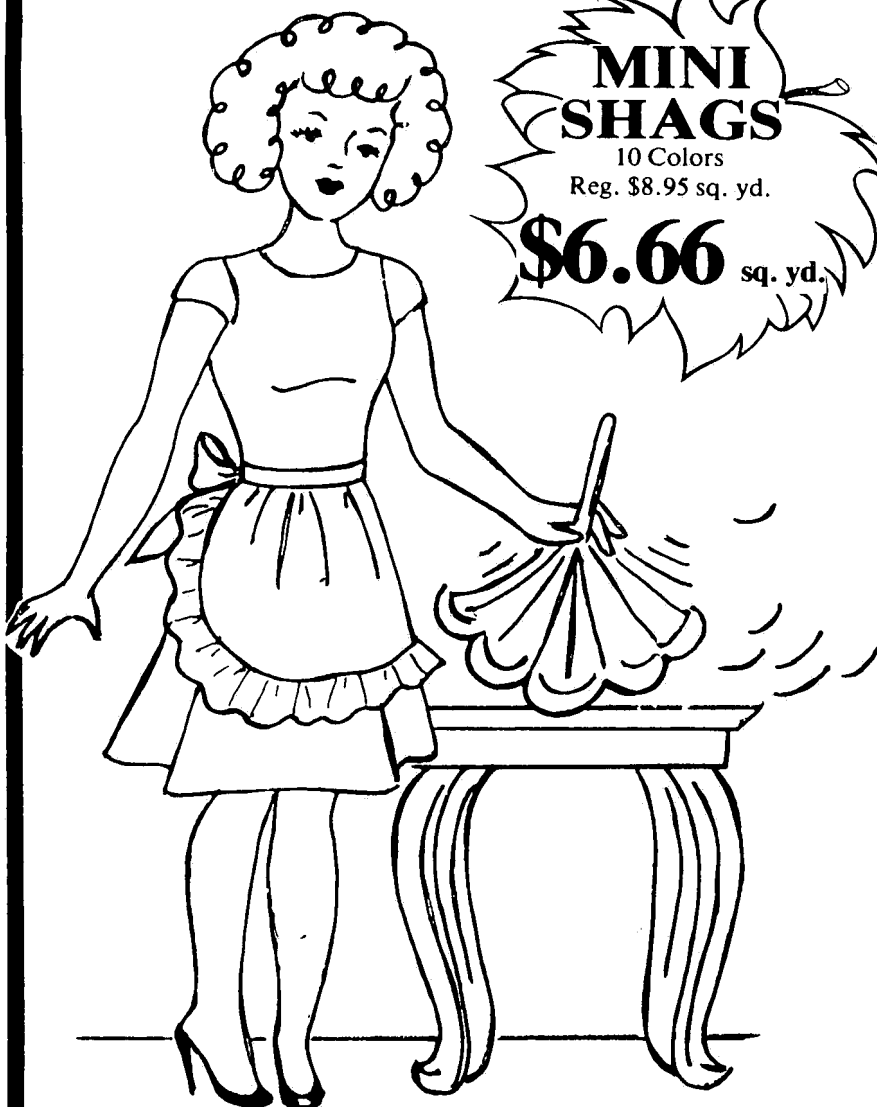


WATERFALL PLAZA
5649 Dixie Hwy., Waterford, MI
623-9577

For Your Convenience
We're Open 'til 9 p.m. Mon-Fri



FALL CLEANING SPECIALS



**MINI
SHAGS**

10 Colors
Reg. \$8.95 sq. yd.

\$6.66 sq. yd.

**SCULPTURED
SHAG**

13 Colors
Reg. \$10.95 sq. yd.

\$8.88 sq. yd.

**SCULPTURED
PLUSH**

6 Colors Only
Special Mill Purchase
Reg. \$12.95 sq. yd.

\$8.95 sq. yd.

**20% OFF
ALL CARPET
CUSHION WITH
PURCHASE
OF CARPET**

**Builders Discount
To All New
Home Buyers**



**THE
CARPET
SHOP**

1780 M-15 (Corner W. Glass)
Ortonville
627-2859

10:00 a.m. to 5:00 p.m. Mon.-Sat.
2 nights a week Thur. & Fri. til 8:00 p.m.



Won't You Please
**Voluntarily
Subscribe?**

See Page 42

H Insurance
K &
N Bonds
Huttenlochters
Kerns
Norvell, Inc.

We Will Take Care of All Your
Insurance Needs

1007 W. Huron, Pontiac
681-2100

Emergency Continued from Page 11

**Springfield Dump
Declared Emergency**

shot a number of years ago in a card game. A man named Leonard Dorsey who supposedly did the dumping in Rose Township is said to be in a hospital at the present time and not expected to live.

Shauver said his department entered the matter in early June when they inspected the site after gaining admittance with a search warrant. They were acting on a call from the Oakland County Health Department about the barrels on the property.

He said a complaint had apparently been filed in the late 60s or early 70s and a court order to clean up had been issued. When the order was not followed up, it was probably because people were more aware of and concerned about pollution and contamination now than they were 10 years ago.

Many resident complaints have been about the time involved in testing for contaminants. Shauver said it takes eight hours to clean up one sample enough to be able to test it. They can only test for one substance at a time. "No one can do it any faster," he said. "It takes four to six weeks to get the results."

He estimated his department could spend more money cleaning up environmental problems that the state now spends on welfare. The DNR, he said, has fifty lawsuits pending now with 15 more anticipated this year. "And that's only because we've found the responsible parties."

AS to the cleanup at the Nickson farm, Shauver said no one would be allowed on the site once the actual work began. Solvents are highly explosive and dangerous. "It's not a spectator sport," he explained.

If any substances were discovered with toxic fumes, Shauver said the Nicksons would be evacuated, but that was not expected.

In the meantime, the Oakland County Health Department will continue testing wells in the area. Both Andersonville and Davisburg Elementaries have proved to have clean, uncontaminated water.

Obituaries

BISSELL, THEODORE PHILLIPS; of Clarkston; September 12, age 64; husband of Katherine; father of Theodore P. Bissell, Jr. of Ohio, Brian D. Bissell of Clarkston; nine grandchildren; brother of Palmer Bissell of Washington; John Bissell of Ohio and Mrs. Elizabeth Savage of Calif. Mr. Bissell was an Associate Broker for Bob White Real Estate in Clarkston. Funeral arrangements at Lewis E. Wint Funeral Home, Clarkston.

HOYT, AUGUST O; September 12, of Clarkston; age 63; beloved husband of Grace; dear father of Barbara Bentley of Clarkston, Ronald Hoyt of Pontiac, Charles Rockwell of Ortonville; also survived by 9 grandchildren.

Mr. Hoyt attended the United Methodist Church of Clarkston. He was a retired real estate broker & was affiliated with the Meat Industry of Michigan for many years. Funeral services from the Goyette Funeral Home, Rev. James Balfour officiating. Interment in Lakeview Cemetery. Family suggests memorials be made to The Michigan Heart Association or to the United Methodist Church of Clarkston.

NICHOLS, JAMES W.; of Springfield Township; Sept. 7, Age 26; son of Mr. & Mrs. James C. Nichols of Davisburg; brother of Mr. David Nichols of Lake Orion & Ricky J. Nichols; grandson of Mrs. Ellie Ramey; of Florida; & Mrs. Bertha Mae Sanders of S.C. Funeral services Sept. 11.

Couture's

For all Your Home Decorating Needs

- Carpeting
- Inlaid Vinyl
- Area Rugs
- Hardwood Floor
- Wallpaper
- Woven Woods
- Levolor Blinds
- Vertical Blinds

Name Brand Carpets and Inlaid

*Lee's - Oleg Cassini - Cabin Crafts
Beverly of Calif. - Armstrong - Bruce
Congoleum - Mohawk - Mannington*

Kentile

Open Daily 9-6, Sat. 10-4
5930 M-15, Clarkston
625-2100



**SAY
YOU SAW IT
IN
THE REMINDER**

Bob's HARDWARE
"BUY NOW *SHAKE* LATER SALE"
KEM[®] PAINTS by
Sherwin-Williams



**Super Kem-Tone[®]
Flat Latex
Wall Paint**

One Coat • Washable • Stain Resin

\$9.99 Gallon

Suggested Retail Price \$13.15

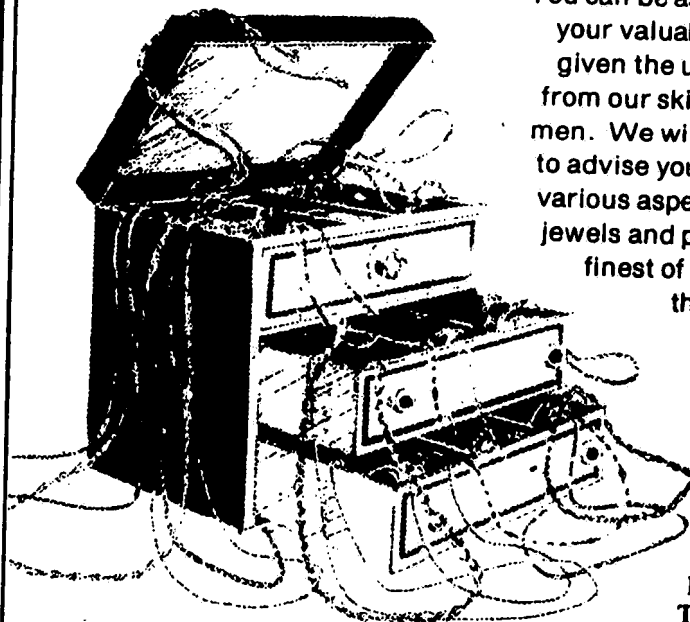
School starting - bad time to paint
Ken-Tone '9" gallon **GOOD TIME TO BUY**
"Buy Now Shake Later Plan"

Buy KEM-TONE now. When you're ready to paint, bring it back to Bob's and we'll shake it for you - free of charge.

Bob's Hardware

64 S. Main, Clarkston
625-5020

EXPERT jewelry and watch REPAIR
and jewelry appraisals



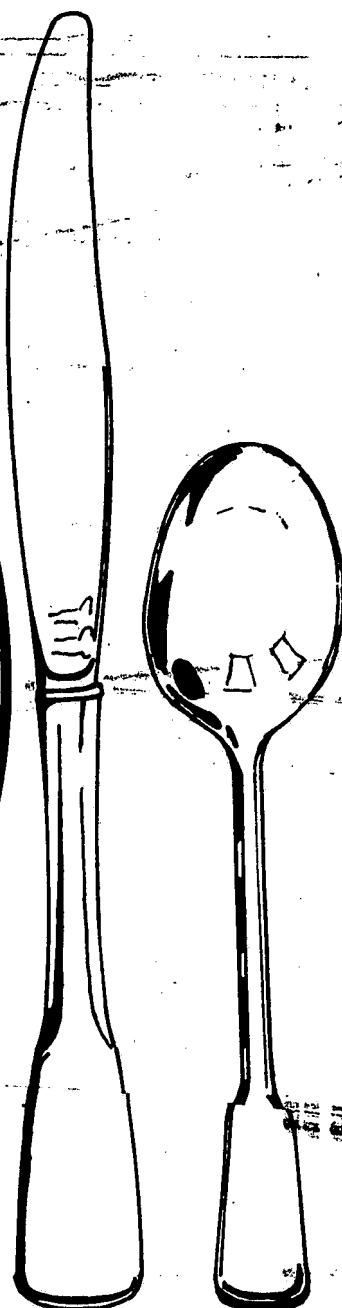
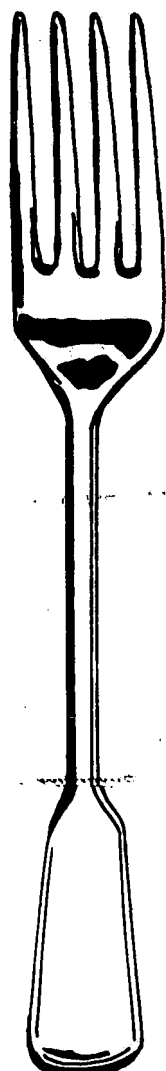
You can be assured that your valuables will be given the utmost care from our skilled craftsmen. We will be happy to advise you about the various aspects of your jewels and provide the finest of service for their repair.

Register for
Toronto Trip

Lovett Jewelers

Clarkston Mills Mall
20 W. Washington

625-2500
Daily 10-6, Fri. 10-9



Win fresh-baked bread, steaks and wine at the grand opening of our Dixie-Maybee office

Pontiac State Bank is opening a new office and you could be the winner.

First prize at our grand opening is enough steak, bread and wine for a dozen family dinners. The winner receives two whole beef strips and two whole rib eyes from the Pink Knob Foodtown supermarket . . . plus fresh, delicious bread from the Foodtown bakery . . . and a case of domestic wine. Foodtown will cut the beef anyway you prefer giving you approximately 50 strip and Delmonico steaks depending on the cut. Foodtown will also store the beef for you if you don't have a home freezer.

This super package could be your prize in the drawing but that's not all. Ten other winners will receive a dinner for two at the Clarkston Cafe as guests of PSB.

The grand opening begins September 26 and continues through October 13 at our new office on Dixie Highway at Maybee Road. Be sure to come. Pontiac State Bank is the place for good banking and good eating.

PSB
PONTIAC STATE BANK

Member FDIC

YOU CAN WIN

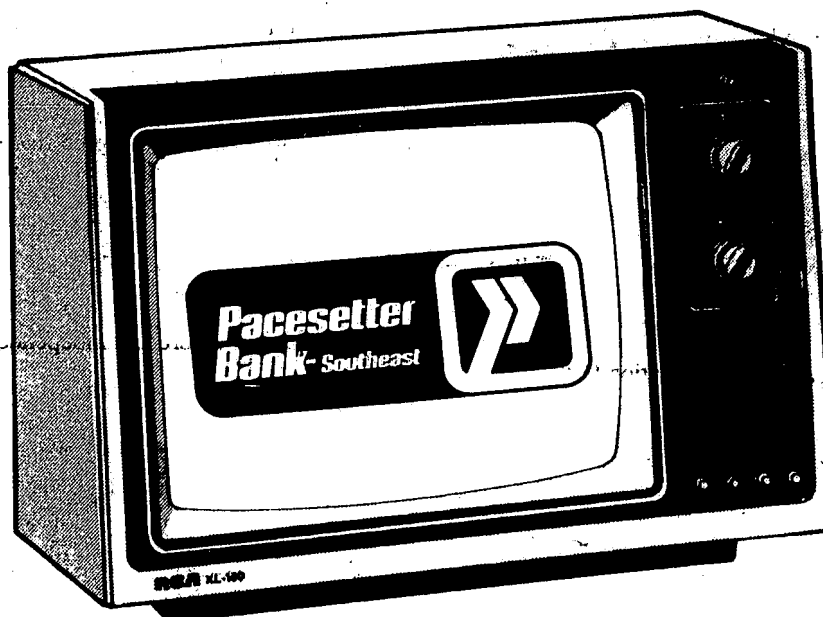
ABSOLUTELY

FREE

THIS 1980 RCA XL100 19 INCH DIAGONAL COLOR TV

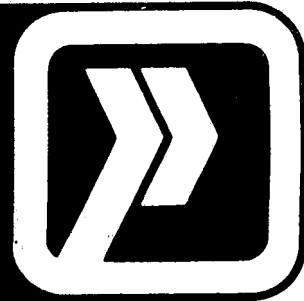
THIS IS A DRAWING THAT ANYONE CAN WIN!

JUST HELP US PROVIDE THE BANKING SERVICES THAT YOU REALLY WANT



RCA The Roommate
Model FQ431

Pacesetter Bank-Southeast



PACESETTER BANK-Southeast will soon open its new office next to the Palace Restaurant. The theme of the bank will be **Pacesetter's Positive Attitude** to emphasize our goal of continually providing the type of banking services considered important by the residents of the area. This drawing and the accompanying questionnaire have been designed to get ideas of what you would like this new bank to be. To become eligible for the color television, all you need to do is complete the attached questionnaire or a reasonable facsimile

and mail it as indicated below. All entries must be postmarked no later than midnight Saturday, September 22, 1979. All entries become the property of the Pacesetter Bank-Southeast and will be held in strict confidence.

PACESETTER BANK-SOUTHEAST
6400 Dixie Highway
Next to Palace Restaurant

CLIP OUT AND MAIL NOW

ENTRY BLANK

MAIL TO: PACESETTER BANK-SOUTHEAST
6400 DIXIE HIGHWAY, CLARKSTON, MICH.

PLEASE PRINT

NAME _____

ADDRESS _____

CITY _____ STATE _____ ZIP _____

TELEPHONE NUMBER _____

1. Check the banking services which are currently used by the members of your household. (Please check as many as are applicable.)

- | | |
|------------------------------------------------------------------------|-------------------------------------------------------|
| <input type="checkbox"/> Checking Account | <input type="checkbox"/> Credit Cards |
| <input type="checkbox"/> Savings Account and/or Certificate of Deposit | <input type="checkbox"/> Mortgage Loans |
| <input type="checkbox"/> Personal and/or Car Loans | <input type="checkbox"/> Safety Deposit Box |
| | <input type="checkbox"/> Other (Please specify _____) |

2. Rank in order of priority the factors which are most important to you in determining where you do your banking.

- | | |
|-----------------------------------------------------------------------------------------------|---------------------------------------------------------|
| <input type="checkbox"/> Bank location | <input type="checkbox"/> Friendly and competent service |
| <input type="checkbox"/> Rates of interest charged | <input type="checkbox"/> Interest rate on savings |
| <input type="checkbox"/> Service charges on checking accounts or minimum balance requirements | <input type="checkbox"/> Banking hours |

3. Check the days during which the majority of your banking is done.

- | | |
|------------------------------------|-----------------------------------------------|
| <input type="checkbox"/> Monday | <input type="checkbox"/> Thursday |
| <input type="checkbox"/> Tuesday | <input type="checkbox"/> Friday |
| <input type="checkbox"/> Wednesday | <input type="checkbox"/> Saturday |
| | <input type="checkbox"/> Spread fairly evenly |

4. Check the time of day when the majority of your banking is done.

- | | |
|------------------------------------------------------|---------------------------------------------|
| <input type="checkbox"/> Before 10 A.M. | <input type="checkbox"/> After 2:00 p.m. |
| <input type="checkbox"/> Between 10 A.M. and 12 A.M. | <input type="checkbox"/> No particular time |
| <input type="checkbox"/> Between 12 A.M. and 2 P.M. | |

AGE _____ YEARS, SINGLE ☐ MARRIED ☐
(Optional)

5. Do you have a bank credit card? If you do, please check the one you have
☐ Master Charge ☐ American Express
☐ Visa ☐ Other (Please specify _____)

6. Is your bank currently open on a full-service basis on Saturday? ☐ Yes ☐ No. If it is not, would a bank which is open on a full-service basis on Saturday be appealing to you? ☐ Yes ☐ No.

7. Is your bank currently charging you a service charge on your personal checking account or requiring that you keep a certain amount of money on deposit in order to avoid a service charge? ☐ Yes ☐ No. If it is, would a bank which has no service charge or minimum balance requirements on personal checking accounts be appealing to you? ☐ Yes ☐ No.

8. Is your bank currently open until 5:30 six days a week? ☐ Yes ☐ No. If it is not, would a bank that is open until 5:30 six days a week be appealing to you? ☐ Yes ☐ No.

9. Check where the majority of your family's grocery shopping is done.
☐ Clarkston
☐ Pontiac
☐ Waterford
☐ Other _____

10. Check where the majority of your family's banking is conducted.
☐ Clarkston
☐ Waterford
☐ Pontiac
☐ Other (Please specify) _____

Additional suggestions are welcomed. Please enclose them on a separate sheet.

local government

Kammer Calls Strategy Session in Battle for Wetland

by Carol Balzarini

State Senator Kerry Kammer held a meeting last week to bring those groups concerned about the future of the headwaters of the Clinton River up to date and to map out strategy for the campaign to save the area from possible gravel mining and development.

Attending the meeting held at the offices of the Oakland County Parks and Recreation Department were the director of that department Eric Reickel, Joe Figa, and Lew Wint of the Parks and Recreation Commission, all Independence Township residents.

Township officials present include Supervisor Floyd Tower, Treasurer Fred Ritter, Clerk Chris Rose, trustees Rudy Lozano and Mike Thayer, and Tim Doyle, head of the parks and recreation department.

The Clarkston Farm and Garden Club was represented by president Maria Arnold and Janet McCord. Gail Ferguson and Connie Morgan came from the Clarkston Women's Club, Doug Roeser and Nelson Kimball from the Independence Land Conservancy.

Also present were representatives of the Oakland County Drain Commission and Planning board, Peggy Johnson from the Clinton River Watershed Council and a representative of the Department of Natural

Resources, there to answer environmental questions.

Kammer began at the very beginning of the sequence of events leading up to this meeting, the passage of the Kammer Land Acquisition Trust Fund several years ago, providing for the purchase of unique parcels of land with the money coming from royalties paid by oil companies not tax dollars.

That same year Oakland County made its application for the purchase of some 300 acres south of the Independence Oaks county park on Sashabaw Road.

All applications received were "scored" and the county's was not accepted that first year. The following year, however, it ranked seventh of 122 applications.

This spring the funding bill for that land passed the State Senate but time ran out in the spring before the House could act on it. Kammer was certain the bill would be passed during the fall session.

In the meantime, the Edward Levy Company appeared before the Independence Township Planning Commission on May 24 with a conceptual plan to turn some 500 acres, including the 300 sought by the county, into a 20-year gravel mine with reclamation to include a 300-acre lake and homesites once mining had ceased.

That proposal was unanimously rejected by the

nine-member planning board.

In July, another meeting was held attended by Levy representatives and those of the state, county and township. Compromises apparently offered by the Levy Company included an agreement not to mine within 200 feet of the river or to draw a diagonal line through the land they wanted leaving the western portion for the county. That land was in the flood plain, and therefore, unbuildable.

Township officials once again indicated they were not interested in the proposal. No further action has been taken by Levy.

Kammer stressed a project of this type would have an impact on the entire Clinton River system that only has its beginnings in Upper Bushman Lake just north of Independence Oaks. It continues for miles through Waterford, Pontiac, Rochester, Utica and Mt. Clemens where it empties into Lake St. Clair.

Gravel mining in this environmentally sensitive area, Kammer said, could result in increased flooding downstream and change the quality of the water in terms of temperature and sedimentation.

Supervisor Floyd Tower outlined the township's

Continued on Page 16

TIMBERLINE Saddlery & Ski Co.

In the Clarkston Mills Mall
20 W. Washington St.
Clarkston, 625-4212

SAY YOU
SAW IT IN
THE REMINDER

ATTENTION: MOBILE HOME OWNERS!

For Mobile Home Repair Service; Plumbing,
Heating and General Repair

COME IN OR CALL:

**WAGNER'S MOBILE HOME
STORE & SERVICE CENTER**
666-1616

- Mobile Home Furnace Repair and Cleaning (Warranty Service All Makes)
- Mobile Home Cooling
- Roof Cool Sealing
- Hot Water Heaters (Gas and Electric repaired, sold and installed.)
- Heat Tapes
- Bathroom Fixtures
- Kitchen Faucets, Sinks
- Drainlines Repaired, Cleaned Out

- Sewerline Donuts
- Window Cranks
- Windows Replaced on Order
- R.V. Heating
- R.V. Cooling
- All Window Repairs
- Storm Doors and Replacement Sets
- Insurance Work Done
- Washer & Dryer Installation
- Trailer Tie Downs Installed
- Skirting



Approved Member

**PARTS AVAILABLE AND...
EVERYTHING FOR THE
DO-IT-YOURSELFER**

1795 N. Williams Lake Rd. at M-59

FREE ESTIMATES
24-HOUR EMERGENCY HEATING SERVICE • 666-1616

ANNOUNCEMENT

**DUE TO THE CARPET BUYING
PUBLIC'S TERRIFIC RESPONSE TO
OUR 100% NYLON SAXONY BY
MAGEE at \$8⁹⁹ PER YARD INSTALLED★**

★ INCLUDING PAD AND LABOR

**WE ARE EXTENDING
THIS LOW PRICE THRU SEPT. 29, 1979**

11
C
O
L
O
R
S



BERVEN OF CALIFORNIA
HAS ARRIVED!

TAKE ADVANTAGE OF OUR
LOW INTRODUCTORY PRICES

11
C
O
L
O
R
S

**CUSTOM
QUALITY
CARPET
INSTALLATION**
\$1⁸⁵
SQ. YARD

**FOAM BACK
LEVEL LOOP
CANDY
STRIPE**
\$3⁹⁹ SQ. YD.
While Stock Lasts

**THRU SEPT. ALL
WALLPAPER
25% OFF**

SAVE 25%



★ PLUS
CHEMICALS

REG. \$12
PER DAY
THROUGH
SEPTEMBER
\$9⁰⁰★
PER DAY

**WE CARE THAT YOUR
HOME LOOKS GREAT**



9768 Dixie Hwy. Clarkston
at Danburg Rd. 625-1133



625-1133

OXFORD TWIN CINEMA

Downtown Oxford on M-24 628-7100

Ample Parking in Rear

Wed. Matinee at 1 p.m. ALL SEATS \$1.50



Weekdays 7:00 - 9:20 Sat. 1:00
3:10 - 5:20 - 7:30 - 9:45 Sun.
2:15 - 4:25 - 6:35 - 8:45
Late Show Fri. & Sat. 11:45

FRI., SEPT. 28TH.

THE
LEGACY

There are many ways to be seduced.
Joe Tynan knows them all.

ALAN ALDA
BARBARA HARRIS
**THE SEDUCTION
OF JOE TYNAN**

Weekdays 7:15 - 9:30 Sat. 1:00
3:15 - 5:15 - 7:15 - 9:30
Sun. 2:00 - 4:15 - 6:30 - 8:45
Late Show Fri. & Sat. 11:30

FRI., OCT. 5TH.

YOUNG
FRANKENSTEIN

Wetland Strategy Continued from Page 15

involvement with one particular parcel of land in the area of the Clinton River, the 80 acres adjacent to Clintonwood Park on Clarkston Road. A part of that land is in the flood plain.

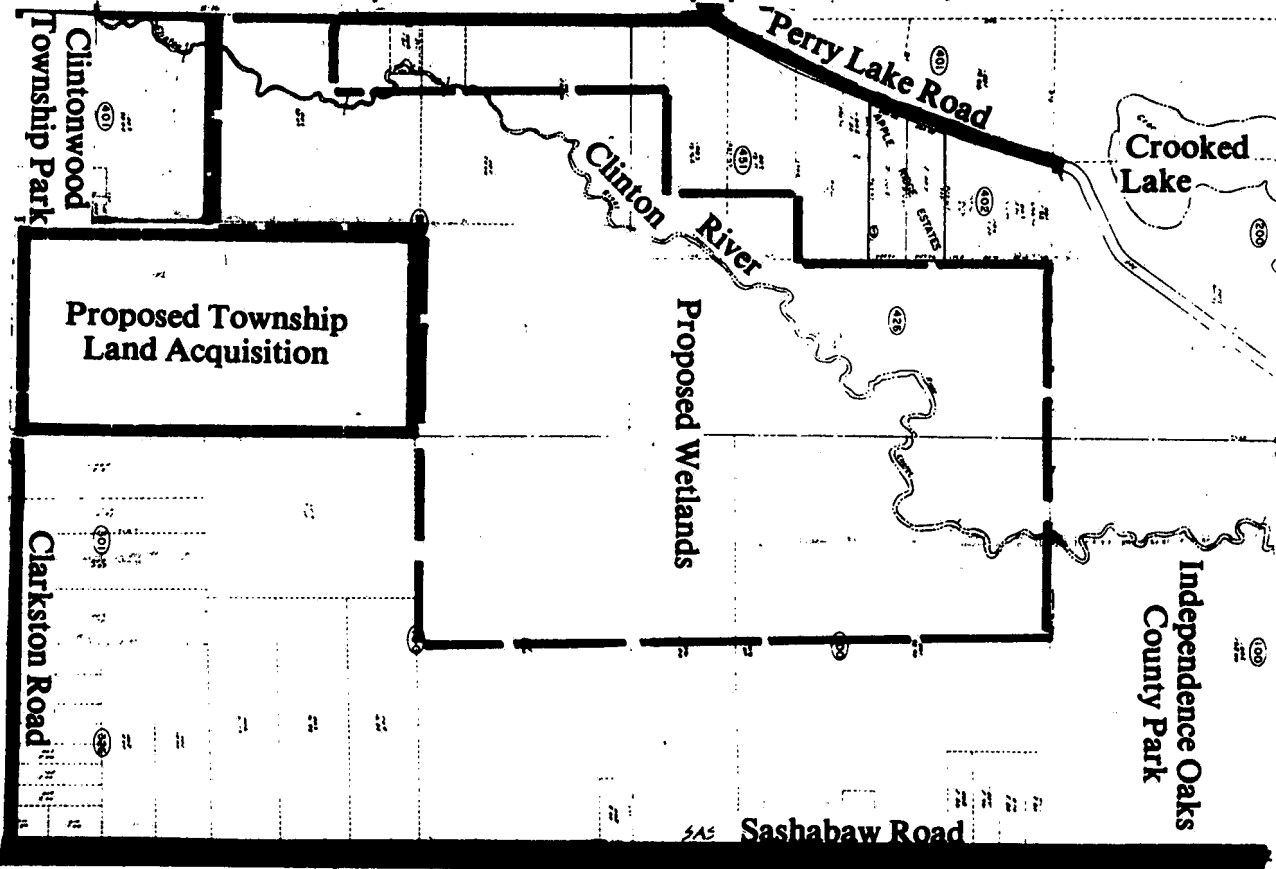
At one time, he said, the township had discussed the possibility of purchasing that acreage because it did abut both the township park and the site where the senior citizen center is now located. The asking price was considered too high and the matter was not pursued until recently.

At a meeting of the township board, Treasurer Fred Rittler revealed the 80 acres had been purchased by the

Levy Company in August. He proposed, and the board approved, that a request for three tenths of a mill to be levied for five years be placed on the ballot of the October 16 special election. The funds generated would enable the township to purchase the acreage by one means or another.

There was general agreement that acquiring the 300 acres plus the 80 acres for park land *may not* stop a gravel mine but that it *would* insure the preservation of an environmentally sensitive area, the primary concern. For the most part, Kammer received the support he sought.

Map below shows location of proposed wetland acquisition.



DONN'S SKI HAUS

Big
Reopening
Sale
Now In
Progress

End Sept. 29, 1979



674-3035

Corner of Walton & Sashabaw
Dryden Plains

FLORIDA

Seminars On...

Ft. Myers

St. Petersburg

EVERYSUNDAY

THE FLORIDA'S GROUP

2600 Union Lake Rd.

Union Lake, Mich. 48085

CALL FOR RESERVATIONS

363-4393

363-8337

Ask for Joey Palmer, Bill Shude

THE FLORIDA'S GROUP

2600 Bldg., Union Lake, Mich. 48085

NAME

ADDRESS

PHONE

Please Send Brochure

Quality
Full-Service
Book Store

- Plus...
- Special Orders
No Extra Charge
 - Gift Certificates
 - Wide Variety of
Children's and Juvenile
Books
 - "Out-of-Print" Title
Search Service
 - Mailing Service
- MC VISA

Village Book Store

625-1355

26 S. Main, Clarkston

10 A Daily
10 B Friday

SHRUB

CLEARANCE!

25 - 50% Off Sale

ON ALL TREES, SHRUBS, AND BUSHES IN STOCK

(Entire Sale Good Sept. 19th. thru Sept. 25th.)

WE CARRY A COMPLETE LINE OF NURSERY ITEMS, FEED & GRAIN

CLEARANCE SALE

Balled & Potted
Shade Trees
Fruit Trees
Flowering Shrubs
Fully Guaranteed

**25 to 50%
OFF**



THE BIG ONES! TREE SALE

	Reg.	SALE
8-10 Ft. HONEY LOCUST	\$ 29.95	\$ 14.95
6-8' WHITE & PINK DOGWOOD	29.95	14.95
10-12' GREEN ASH	29.95	14.95
10-12' RED BUD	49.95	29.95
12-14' NORWAY MAPLE	99.95	49.95
12-14' SUGAR MAPLE	109.95	59.00
10-12' SILVER MAPLE	39.95	19.95



TAXUS CAPITATA

2-3'

Reg. \$26.95

SALE \$18.95



COLORADO BLUE SPRUCE

2 GAL. SIZE

Reg. \$10.95

SALE \$7.95

NORWAY, WHITE SPRUCE

2 GAL. SIZE

Reg. \$8.95

SALE \$5.95

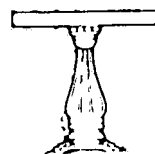
DWARF ALBERTA SPRUCE

10-12"

Reg. \$9.95

SALE \$6.95

Don't miss our Wood Stove Display!
Many Models to Choose From!



**40% Off
CEMENT WARE**
Bird Baths, Benches, Urns,
Madonnas, Fountains

WOOD CHIPS - 3 Cubic Foot Bags

PINE BARK

Reg. \$4.95

SALE \$4.49

REDWOOD

Reg. \$5.95

SALE \$5.49

MICHIGAN PEAT SPECIAL

Reg. \$1.29

SALE 99¢ 40 LB. BAG



1 GAL. POTTED
EUONYMOUS, BURNING BUSH,
EUONYMOUS SARCOXIE, GOLDEN VICARY

YOUR
CHOICE

\$2.99

RUSSIAN

OLIVE TREE

Reg. \$14.95

SALE \$7.95

MUGO PINES

Reg. \$14.95

SALE \$7.95

ANDORA JUNIPERS 12-15" Reg. \$7.95 **SALE \$4.95**



IT'S GRASS SEEDING TIME!

Fall is the ideal time to put down seed because
the warm days and cool nights are ideal
for germination
We have bulk Seed - DISCOUNTS on 50 LB. BAGS

FIELD RYE

for fall planting in your garden for
spring plow down.

29¢ lb.

\$6.95 Bushel

PASTURE MIX

SALE \$1.29 Lb.

or

\$1.19 by bag

Reg.
\$1.49 Lb.

WE STOCK RAILROAD TIES

VALUABLE COUPON

\$5.00 OFF

With Purchase of \$100.00 or
more worth of Nursery Stock.

Expires September 25, 1979

ORTONVILLE STOCKYARD

Corner of M-15 - Mill St., Ortonville

627-4360

Daily 9 - 6, Sat. 10 - 4

**Come In & See
Beautiful Fall Fashions**
Fashion Show every Fri. 12:30
Sherwood Forest on M-59
Christie's of Clarkston Mills
20 W. Washington, Clarkston
625-3231
Mon. - Thur. 10-6 Fri. 10-9 Sat. 10-6
Parking on Depot Road in back of Mall with entrance

Nan's Remembers...
**When people were
important...**
**That way when you
want a hairstyle
that's just you,
Nan's Knows How!**



623-6654
*Nan's
Coiffures*
Hair Design
4194 Airport Rd. Waterford, MI
Appointments not always necessary

Continued from Page 7

reminder special report

Clarkston. His company handles waste from small factories, restaurants, motels and residences.

He revealed a recent incident involving a Detroit customer who wanted him to haul some paint. The paint was classified as a toxic substance.

"I called Flint, Grand Blanc, Detroit. Nobody would

take the paint... We have to have some place to dispose of wastes. Dumping it in the rivers or burying it in the ground are no longer solutions for the problem."

The issue was unfolding at the state level, also. Attorney Plunkett had accused Stablex of ignoring local government, while hob-nobbing with state officials in an effort to gain their support.

Indeed, Stablex had first consulted the State about their plan in 1977. Governor William Milliken visited Stablex while on an economic scouting mission in Europe in 1977, and in turn invited them to Michigan. That is how Stablex picked Michigan.

But out of the Stablex controversy and the Shindler, DeMode Road illegal dumpsites, comes a much broader concern. Where has Michigan been putting its industrial wastes? Donald Inman, an environmental specialist for the DNR, said there are three legal methods of waste disposal in Michigan.

"It is either burned (incineration), disposed of underground (landfill), or simply shipped to a neighboring state," he said.

What is the DNR's assessment of Michigan's toxic waste disposal legislation? Inman replied that the "legislation we now have before us, which we are using as a tool to regulate public health and safety, are inadequate in some areas and sufficient in others. The Solid Waste Management Act gives us the authority to regulate the underground disposal of toxic substances. Act 245, the General Water Resources Act, gives the authority to prevent the contamination and pollution of ground waters."

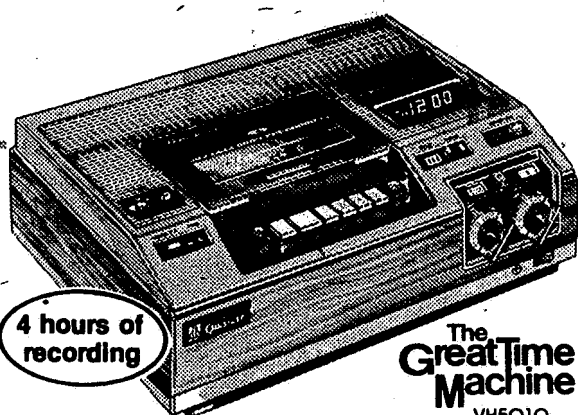
He added, "The department hasn't had a good tool for requesting total information from a company regarding the kinds of constituents coming into a facility. Thus, it was difficult to plan ahead for what kinds of by products might be generated in the company's process."

In the case of Stablex, by executive order, it has been labeled a Major State Action, which means the issue has sufficient broad range environmental impact to merit special & closely coordinated efforts on the part of various departments charged with investigating the issue. Thus you can bet the DNR is keeping a close watch on all aspects of the developing operation.

Despite the state's stated desire to establish a toxic waste system and Stablex's willingness to accommodate that need, area residents remained unswayed in their efforts to keep it out of this area.

At a meeting on April 10, the Groveland Township

SWEET'S T.V. PRESENTS:



QUASAR VIDEO CASSETTE RECORDER

Record what you're watching. Record one channel while you watch another. Record when you're not at home. In-cassette recording.

SWEET'S T.V. SERVICE

3546 Pontiac Lake Rd., Pontiac
673-2422

OPEN 9-6, SAT. 9-12, CLOSED SUN.

Your assurance of quality...



...from concept to finished job.

Job printing is more than just putting words on paper. It entails creative design and proper layout. That's where The Reminder comes in. Our qualified staff has the experience and capability to produce the job you need, whether it be brochures, business forms, letterheads or menus. Give us a call and we'll get started right away.

- * BOOKLETS
- * BROCHURES
- * LETTERHEADS
- * PROGRAMS
- * FLYERS
- * WEDDING INVITATIONS

- * TICKETS
- * OFFICE FORMS
- * ENVELOPES
- * NCR FORMS
- * MENUS
- * BUSINESS CARDS

Call 625-9346 for
Free Pick-Up &
Delivery

The Reminder
8062 M-15, Clarkston

WALLPAPER SALE

10 - 30% Off

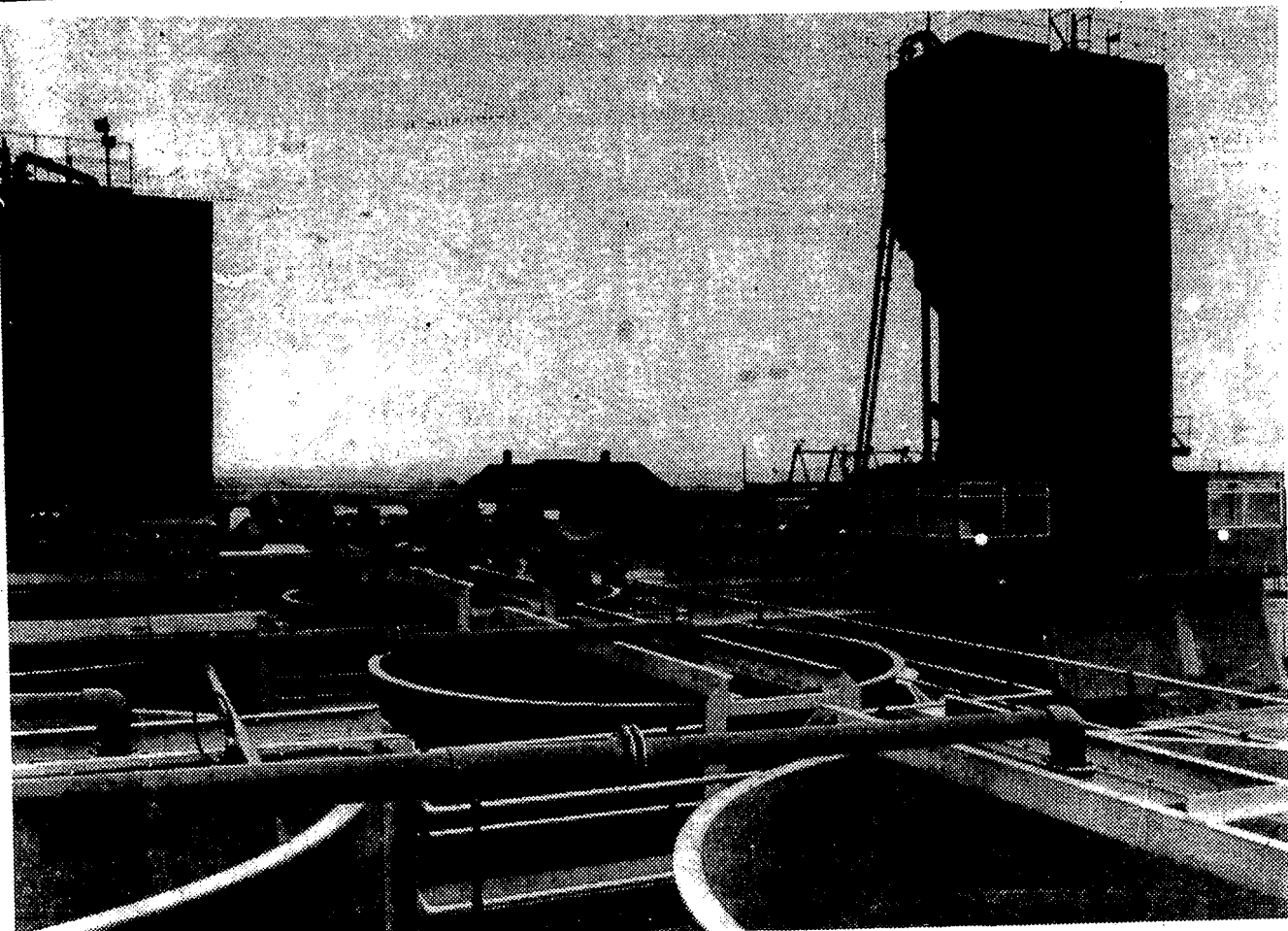
Selected Books Including Books of

GRASS CLOTH

Now's the time to take advantage of
SALE PRICES

Bob's **HARDWARE**

64 S. Main, Clarkston
625-5020



One of Stablex's English plants.

Planning Commission unanimously rejected a reclamation plan submitted by Stablex. The plan was a first step, at the township level, in the company's attempt to obtain a Land Use Permit to build a facility at the site of the present Tri-City Aggregates gravel mining operation.

Stablex has taken the planning commission denial to court where it has experienced a series of delays. Most recently a hearing between Stablex and Groveland Township was scheduled for September 17. But it too was postponed. A spokesman for Stablex said that due to circumstances within the court system, unrelated to the case, it was necessary to delay scheduling of the hearing for either mid-or late October.

The issue is far from over. If Stablex receives another setback in court, they will likely appeal. They've spent a lot of money in preparing the Holly site. On the other hand local residents seem as determined as ever to fight the large corporation and its reclamation plan. you can bet a large contingent of interested parties will cast their wary eyes on court proceedings when they get underway in October.

625-0275

DEER LAKE

Travel

SUPERSAVER VACATIONS

Save Up to 40% on Both Hotel and Airfare Charters from Detroit

West End/Grand Bahamas-\$269*

Or Freeport-\$369*

Nov. 24, Dec. 1, 8, 15

Nassau-\$379 Per Person**

Nov. 24, Dec. 1 & 15

* Price Per Person

** Based on Double Occupancy

One Week Vacations Weekly Departures from Detroit, April through December. Includes Hotel and Airfare and Much, Much, More.

Adventure Tours U.S.A. Inc.

DEER LAKE TRAVEL, INC.

7150 Dixie Hwy., Clarkston

Mon. 9:30 - 8:00

Tue.-Fri. 9:30 - 5:30

BUSINESS OWNERS:

Does your Current Insurance Cover all of these Major Exposures?

STANDARD	
Building Amount	Premium
Bus Pers Prop Amt	\$
Loss of Income	Options \$
Employee Dishonesty	\$
Exterior Signs Value	\$
Burglary and Robbery	\$
Exterior Grade Floor Glass No. sq. Ft.	\$
Boiler, Pressure Vessels & Air Conditioning Equip	\$
Business Liability Limit \$	\$
Earthquake Damage	\$
Other (Describe)	\$
TOTAL	\$

SPECIAL - All-Risk	
Building Amount	Premium
Bus Pers Prop Amt	\$
Loss of Income	Options \$
Employee Dishonesty	\$
Exterior Signs Value	\$
Exterior Grade Floor Glass No. sq. Ft.	\$
Boiler, Pressure Vessels & Air Conditioning Equip	\$
Business Liability Limit \$	\$
Earthquake Damage	\$
Other (Describe)	\$
TOTAL	\$

These are available in a package that is very affordable.

Call us for a complete proposal on your Business. The Proposal is FREE. The Uncovered Loss is Expensive.

WELLS - MC CANN - KIRK

338-7398 - 634-4454

627 Broadway, Davisburg

Two Sales In One!

20% off

Style-Tex

wallcoverings

Sept. 17th thru Oct. 15th

Style-Tex Wallpaper Sale!

25 - 35% OFF

Sale Sept 21-Sept. 31st.

Come see us at the Home Show Oct. 4th-7th, at the Silverdome

Ray's Floor & Wall Covering

1469 M-24 (South of Pine Tree Lighting)

Lake Orion, Mich. **693-9559**

We've got the cure for your gas pains!

78 Sunbird *3995	77 LeMans *3195
Air, PS/PB, AM-FM Stereo, Sharp.	4 Dr., Vinyl Top, Air, AM-FM, 301 V-8, Nice.
76 LeMans *2895	77 Ventura II *3495
2 Dr., Vinyl Top, 260 V-8, PS/PB, Very Clean.	2 Dr., Vinyl Top, PS/PB, 305 V-8.
77 Mustang II *3195	76 Grand Prix T-Top *3695
2 Dr., PS/PB, Radio, 4 Speed Trans.	Air, Rally Wheels, Plus Other Extras, Sharp.
75 Pacer *1895	76 Catalina Safari *2795
6 Cyl., Automatic Trans.	Air, PS/PB, Luggage Carrier.
	77 Bonneville *4295
	4 Dr., Air, AM-FM Stereo, 60/40 Seat, Full power, 301 V-8
	76 LeMans Safari *2395
	Air, Luggage Carrier, Power, A Seal at
	75 Impala Safari *1195
	9 Passenger, Air, Luggage Rack.

SPECIAL

73 Catalina *1195

4 Dr., Air, Vinyl Top, PS/PB, A Florida Car.

HAUPT PONTIAC

M-15, Clarkston

625-5500

Open til 9 p.m. Mon., Tue. & Thur.

HAMADY

Complete Food Centers

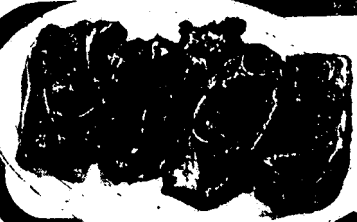
we
welcome
 FOOD
STAMPS

Hamady Ortonville Hours
DAILY 8 A.M. - 10 P.M.
SUNDAY 9 A.M. - 8 P.M.



Fresh Holly Farms 4 TO 6-POUND
U.S.D.A. GRADE A
ROASTERS CHICKEN

LB. **68¢**



Fresh Pork Shoulder
STEAK OR ROAST

LB. **\$1.08**



Boneless Round Roast Or
FAMILY STEAK

LB. **\$1.98**



Center Cut Rib, Round Or
SIRLOIN STEAK

LB. **\$2.58**



MICHIGAN No. 1

Yellow
ONIONS
3 59¢
LB. BAG



WASHINGTON STATE PEARS

Juicy Ripe
BARTLETTS
39¢
LB.



MICHIGAN No. 1 CRISP

Golden
CARROTS
2 39¢
LB. BAG

All Vegetable
PURE CRISCO
ALL PURPOSE
SHORTENING
\$1.79
3-LB.
CAN

with coupon below.

Bathroom Tissue
COTTONELLE
ASSORTED
COLORS
4-ROLL
PKG.
78¢

with coupon below

Breast O' Chicken
CHUNK TUNA
LIGHT MEAT
In Oil Or Water
49¢
6 1/2-OZ.
CAN

with coupon below.

HAMADY COUPON
ALL VEGETABLE
PURE CRISCO
3 LB. CAN **\$1.79**
LIMIT 1 PER FAMILY
VALID THRU MON., 9/24/79-H 51
SAVE 30¢
WITH THIS COUPON

HAMADY COUPON
BATHROOM TISSUE
COTTONELLE
4 ROLL PKG. **78¢**
LIMIT 1 PER FAMILY
VALID THRU MON., 9/24/79-H 52
SAVE 25¢
WITH THIS COUPON

HAMADY COUPON
BREAST O' CHICKEN
CHUNK TUNA
LIGHT MEAT
In Oil Or Water
6 1/2-OZ. CAN **49¢**
LIMIT 1 PER FAMILY
VALID THRU MON., 9/24/79-H 53
SAVE 22¢
WITH THIS COUPON

NO SALES TO DEALERS - REASONABLE QUANTITIES AVAILABLE TO OUR CUSTOMERS
PRICES EFFECTIVE TUES., SEPT. 18 THRU MON., SEPT. 24, 1979

HAMADY

Complete Food Centers



PREPARED SPAGHETTI

**FRANCO
AMERICAN**

4 14 1/2-OZ. CANS **95¢**

FAMILY FARE

**SLICED
POTATOES**

LB. CAN **25¢**

KOUNTY KIST

**SWEET
PEAS**

17-OZ. CAN **29¢**

Manufacturer's Brand At No Brand Prices!



ASSORTED

KLEENEX

FACIAL TISSUE

SAVE 12¢

200-CT. PKG.

53¢

BETTY CROCKER HAMBURG OR TUNA HELPERS 5 1/2-OZ. TO 8 1/2-OZ. PKG.

69¢

CONVERTED **UNCLE BEN'S RICE**

2-LB. PKG. **\$1.29**

CRISPY CRUMB MIX **OVEN-FRY BREADING**

4.2-OZ. PKG. **59¢**

DELUXE FRENCH OR SWEET SPICY **WISHBONE DRESSING**

8-OZ. BOTTLE **64¢**

HELLMANN'S REAL **MAYONNAISE**

QUART JAR **\$1.45**

NESTLE'S DRINK **STRAWBERRY QUIK**

LB. CAN **\$1.27**



REGULAR OR DIET

SEVEN-UP

OR **Sunkist Orange**

SAVE \$1.00

8-PAK 1/2-LITER DEPOSIT BOTTLES

\$1.29

FREEZE-DRIED INSTANT **MAXIN COFFEE**

8-OZ. JAR **\$5.09**

TREESWEET PINK **GRAPEFRUIT JUICE**

SAVE 8¢ 48-OZ. CAN **69¢**

ALL GRINDS COFFEE **MAXWELL HOUSE**

2-LB. CAN **\$5.79**

FRESH GROUND COFFEE **MASTER BLEND**

26-OZ. CAN **\$4.99**

ALL FLAVORS **SUN-GLO POP**

PLUS DEPOSIT 3 LITER BOTTLES **79¢**

NESTLE'S DRINK **CHOCOLATE QUIK**

LB. CAN **\$1.45**

SAVE 21¢ DETERGENT

Joy Dish Liquid

22-OZ. BOTTLE
Hawthorne House
LEMON OR
PINK LIQUID
2 1/2-QT. \$1.00

88¢

10¢ OFF LABEL DETERGENT

Wisk Liquid

SAVE 21¢

QUART BOTTLE

\$1.28

HAWTHORNE HOUSE BLUE

Fabric Softener

1/2-GAL. JUG
25¢ OFF LABEL
FINAL TOUCH
Fabric Softener
1/2-GAL. JUG **\$1.68**

89¢

20¢ COUPON

GOOD TOWARDS PURCHASE OF

Betty Crocker Super Moist

Cake Mix

17 1/2-OZ. PKG. **65¢**

LIMIT 2 PER FAMILY
VALID THRU MON., 9/24/79-H 57-58
HAMADY COUPON

Sunshine
**KRISPY
CRACKERS**

LB. BOX

83¢

SAVE 10¢

**SOUP
STARTER**

6 7-OZ. PKG.

89¢

Hefty Bags

36-CT. QUART OR 25-CT. GALLON

SAVE 2/1.00

30¢ TALL KITCHEN 12-CT. Super Weight

SAVE 14¢ **85¢**

SAVE 16¢

Hawthorne House
Fabric Softener

40-CT. PKG. **\$1.43**

Hawthorne House
Sudsy Ammonia

1/2-GAL. JUG **44¢**

SAVE 12¢

**PLEDGE
FURNITURE
POLISH**

14-OZ. CAN

\$1.43

SAVE 9¢

**SHOUT
STAIN
REMOVER**

19-OZ. CAN

\$1.33

health & beauty aids



CREST TOOTH PASTE

5-OZ. TUBE **99¢**



Prell Shampoo

5-OZ. CONCENTRATE OR 11-OZ. LIQUID

\$1.59

20¢ OFF LABEL



SECRET

ANTIPERSPIRANT OR DEODORANT

SPRAY

4-OZ. AEROSOL **\$1.49**

25¢ Off Label
**AIM
TOOTH PASTE**

6.4-OZ. TUBE

95¢

Silkience

SELF-ADJUSTING CONDITIONER
REGULAR OR EXTRA BODY

16-OZ. BOTTLE **\$1.89**

**CURAD
BANDAGES**

Transparent Or Plastic

80-CT. BOX **99¢**

Ultra Ban

ROLL-ON
Deodorant

Reg. Unscented 1.5-OZ. BOTTLE **\$1.09**

SUAVE

Balsam Normal
SHAMPOO

16-OZ. BOTTLE **97¢**



**Body On Tap
Shampoo**

OILY OR NORMAL

7-OZ. BOTTLE **\$1.19**

**CONTAC
CAPSULES**

10-CT. PKG.

\$1.25

**VASELINE
INTENSIVE CARE
LOTION**

8-OZ. BOTTLE

99¢

SCHICK

Platinum Plus
INJECTOR BLADES

7-CT. P. G. **\$1.25**

Congespirin

LIQUID
FOR CHILDREN

3-OZ. BOTTLE **\$1.69**

F.D.S.

Feminine Deodorant
SPRAY

16-OZ. AEROSOL **\$1.59**

BUFFERIN

TRIPLE AS FAST AS ASPIRIN

36-CT. BOTTLE **\$1.07**

Q-TIPS

Cotton Swabs

88-CT. BOX **59¢**

Datril

500 Extra Strength

60 CT BOTTLE **\$1.33**

**Nice & Easy
HAIR COLOR**

BOX

\$2.35

bakery

HAWTHORNE HOUSE WHITE

PREMIUM BREAD

Super Value!

20-OZ. LOAF

44¢

LUNCHBOX **LITTLE DEBBIE CAKES** 12-CT. PKG. **79¢**

TAYSTEE **DINNER ROLLS** 12-CT. PKG. **67¢**

TAYSTEE PLAIN **JUMBO STEAK BUNS** 8-CT. PKG. **69¢**

RAINBO SLICED **SANDWICH BREAD** 24-OZ. LOAF **79¢**

KOEPLINGER **HEALTH BREAD** 16-OZ. LOAF **73¢**

BUTTER SPLIT TOP

TAYSTEE

WHEAT BREAD

SAVE 10¢

20-OZ. LOAF

75¢

FRESH CRISP

Potato Chips
 9-OZ. BAG **58¢**
 SAVE 17¢

DEL MONTE FANCY

Green Beans
 FRENCH STYLE OR CUT
OR LEAF SPINACH
 3 15 TO 16-OZ. CANS **\$1.00**
 Super Value!

50¢ OFF LABEL

FAMILY TIDE DETERGENT
 10-LB. 11-OZ. BOX **\$4.78**
 SAVE 71¢

TINY THIN **QUINLAN PRETZELS** **8-OZ. PKG. 53¢**
 SAVE 14¢
VARIETY PAK LUNCH BOY **FRITO-LAY SNACKS** **13-CT. PKG. \$1.19**
 SAVE 30¢
PLUMP TENDER **RICELAND RICE** **2-LB. PKG. 63¢**
BETTY CROCKER **FROSTINGS** **16½-OZ. CAN \$1.08**
 READY TO SPREAD
WELCH'S PURE **GRAPE JAM/JELLY** **20-OZ. JAR 73¢**
 SAVE 10¢
HAWTHORNE HOUSE CREAMY OR CRUNCHY **PEANUT BUTTER** **18-OZ. JAR 93¢**

REGULAR OR HOT **HORMEL CHILI w/BEANS** **15-OZ. CAN 69¢**
 SAVE 5¢
DINTY MOORE **BEEF STEW** **24-OZ. CAN \$1.15**
 SAVE 4¢
LIQUID BOWL CLEANER **DEPEND-O AUTOMATIC** **12-OZ. BOTTLE 68¢**
 SAVE 11¢
JACK RABBIT **PINTO BEANS** **2-LB. PKG. 83¢**
RUG DEODORANT **CARPET FRESH** **14-OZ. CAN \$1.58**
 SAVE 21¢
ASSORTED INCLUDING TUNA **9-LIVES CATFOOD** **6½-OZ. CAN 27¢**
 SAVE 2¢

STRONG ABSORBENT

TERI PAPER TOWELS
JUMBO ROLL 58¢
 SAVE 16¢

NONE STRONGER 3-MIL 2-PLY
Hefty Trash Bags
 12-CT. PKG. **\$1.48**
 SAVE 71¢

MOTT'S DELICIOUS
Apple Sauce
 25-OZ. JAR **53¢**
 Super Value!

FIVE VARIETIES
Vets Dog Food
 15½-OZ. CANS **89¢**
 SAVE 16¢

SAVE 11¢
FUTURE Floor Wax
 27-OZ. BOTTLE **\$1.93**

SAVE 10¢
GLADE SOLID ROOM DEODORIZERS
 6-OZ. PKG. **39¢**

SAVE 11¢
JERGEN Bath Soap
 4-BARS **89¢**

SAVE \$1.38
24" x 45" RAG THROW RUGS
 2 **\$3.00**
 FOR

DEL MONTE WHOLE **Green Beans** **LB. CAN 43¢**
Pineapple Grapefruit DRINK **48-OZ. CAN 59¢**

SAVE 4¢
KELLOGG'S HONEY-NUT CEREAL
 19-OZ. PKG. **\$1.15**

SAVE 30¢
Wilderness CHERRY PIE FILLING
 22-OZ. CAN **\$1.09**

PAMPERS TODDLER DIAPERS
 48-CT. PKG. **\$6.49**

dairy

Hawthorne House
Gallon Milk **Fresh Grade A** **LO-FAT PLASTIC JUG** **\$1.33**
 SAVE 51¢

frozen food

Freshlike **INDIVIDUALLY QUICK FROZEN**
Peas, Corn GREEN BEANS **18 TO 20-OZ. BAG 59¢**
 MIXED, STEW OR SOUP
 SAVE 16¢

NEW SANDWICH MATE **CHEESE SLICES** **12-OZ. PKG. 89¢**
AMERICAN OR PIMENTO **VELVEETA** **2 LB. LOAF \$2.51**
KRAFT MIDGET LONGHORN **COLBY CHEESE** **12-OZ. PKG. \$1.49**
FLEISCHMANN'S **SOFT MARGARINE** **2 PAK 8-OZ. TUBS 95¢**
FLEISCHMANN'S **MARGARINE** **LB. QUARTERS 89¢**
FAMILY FARE **CHEESE SPREAD** **2-LB. LOAF \$1.99**
KRAFT EX-SHARP CHEESE **CRACKER BARREL** **10-OZ. PKG. \$1.49**
KRAFT PARMESAN **GRATED CHEESE** **8-OZ. PKG. \$1.83**
PEANUT BUTTER OR CHOC. CHIP **MERICO COOKIES** **LB. TUBE 89¢**
HUNGRY JACK **BISCUITS** **BUTTERMILK OR BUTTER TASTIN' 10-CT. TUBE 41¢**

BOSTON BONNIE **GLAZED DONUTS** **6-CT. PKG. 79¢**
BIRDSEYE **COOLWHIP TOPPING** **8-OZ. TUB 67¢**
SARA LEE **CHEESE CAKE** **23½ TO 26-OZ. PKG. \$2.19**
BANQUET WHITE **BREAD DOUGH** **5 1-LB. LOAVES \$1.19**
GREEN GIANT BROCCOLI SPEARS OR **LoSEUR PEAS** **10-OZ. PKG. 68¢**
SALUTO **PARTY PIZZA** **33-OZ. PKG. \$3.29**
STOUFFER'S **LASAGNA** **21-OZ. PKG. \$2.09**
VAN DeKAMPS (3-Varieties) **MEXICAN DINNER** **11-OZ. PKG. 79¢**
IDA TREAT SHOESTRING **POTATOES** **40-OZ. PKG. 72¢**
COLE'S **GARLIC BREAD** **3-CT. PKG. \$1.09**

FORTIFIED **SUNBORN**
SATIN GOLD SPREAD **2-LB. BOWL 82¢**
 SAVE 7¢
ORANGE JUICE **GAL. JUG \$1.88**
 SAVE 41¢

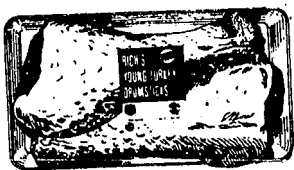
TOASTER READY **ASSORTED FLAVORS**
HARVEST WAFFLES **4 6-CT. PKGS. \$1.00**
CARNIVAL Bullet Pops **24-CT. BOX 98¢**
 SAVE 21¢

HAMADY COMPLETE FOOD CENTER 700 M-15, ORTONVILLE

HAMADY

Complete Food Centers

butcher shop meats



RICH'S FRESH
TURKEY
DRUMS, WINGS
OR WINGETTES
LB. 78¢

HOLLY FARMS (STEWERS) **BAKING HENS** **LB. 68¢**

HOLLY FARMS **CHICKEN** **SKINLESS WIENERS** **LB. 98¢**

RICH'S SLICED **TURKEY** **SALAMI OR SUMMER SAUSAGE** **8-OZ. PKG. 88¢**

GOLDKIST
CORNISH
GAME HENS
22-OZ. EACH
LB. 98¢



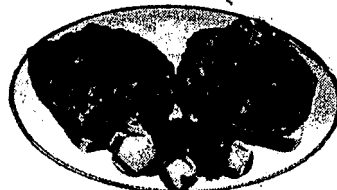
SLICED FREE
WHOLE
PORK LOINS
LB. \$1.18
1/4-Loin Sliced into 9/11 Chops
LB. \$1.48

HYGRADE CENTER CUT PORK **SMOKED CHOPS** **LB. \$1.68**

TENNESSEE (Reg. Or Family-Pak) **LINK SAUSAGE** **LB. \$1.88**

GORTON'S STICKS OR PORTION **CRUNCHY FISH** **12-OZ. PKG. \$1.78**

COOKED, PEELED, DEVEINED
SINGLETON
SHRIMP
8-OZ. PKG. \$2.08



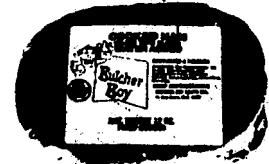
BONELESS
WHOLE BEEF
RIB EYE
Sliced Into Steaks Free!
RIB EYE STEAKS
LB. \$3.18
LB. \$2.98

TANGO **TAMALES** **5-PER PKG. 14 1/2-OZ. PKG. \$1.18**

AZTECA **TORTILLAS** **11-OZ. Flour 48¢ 10-OZ. Corn 38¢**

STEHOUWER'S **SIZZLE STEAKS** **18-OZ. PKG. \$2.28**

5-VARIETIES
PIERRE
PATTIES
21-OZ. PKG. \$2.48



BUTCHER BOY
Wafer Sliced
COOKED HAM
12-OZ. PKG. \$1.58

SALAY'S SKINLESS **WIENERS** **MICHIGAN GRADE 1** **LB. PKG. \$1.58**

BUTCHER BOY ROASTING **SAUSAGE** **MICHIGAN GRADE 1** **LB. \$1.58**

THORNAPPLE VALLEY **SLICED BACON** **20-OZ. PKG. \$1.88**

FULLY COOKED
Armour Star
CAN PICNICS
1 1/2-LB. SIZE \$2.88

FARMER PEET PLAYTIME
Franks **Mich. Grade 1 Skinless** **LB. PKG. \$1.28**

PESCHKE SKINLESS BEEF
Wieners **Van Hollen SAUERKRAUT** **LB. 35¢ LB. PKG. \$1.08**

AGAR RED BRICK Hickory Smoked
Sliced Bacon **LB. PKG. \$1.08**

PESCHKE SLICED
Bologna **Michigan Grade 1** **LB. PKG. \$1.18**

fresh fruits & vegetables

FARM FRESH
GREEN PEPPERS **5 FOR 79¢**
FLORIDA
FRESH LIMES **10 FOR 89¢**
SUNNY DELIGHT
CITRUS BLEND **1/2 GALLON JUG 99¢**
CARAMEL APPLES
AFFY TAPPLE **4 IN A BOX 99¢**
LITTLE CROW
POPCORN OIL **12-OZ. BOTTLE 99¢**

SAVE UP TO 60¢
WITH THIS COUPON
Bonnie Lee
WHITE OR YELLOW
POPCORN
2-LB. BAG
LIMIT 3 PER FAMILY
49¢
VALID THRU 9/24/79-H 54-55-56
HAMADY COUPON



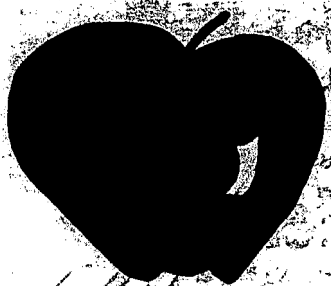
MICHIGAN No. 1
SQUASH
BUTTERNUT
BUTTERCUP **LB. 10¢**
OR ACORN

MICHIGAN PURE
Apple Ridge
CIDER
GALLON JUG \$1.99

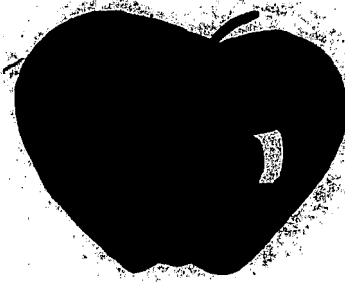
CAROLINA No. 1
GOLDEN
SWEET YAMS
LB. 29¢

LARGE 24-SIZE
PASCAL CELERY **STALK 49¢**
MICHIGAN No. 1
GREEN CABBAGE **LB. 16¢**
FARM FRESH
ROMAINE LETTUCE **BUNCH 49¢**
MICHIGAN No. 1 WHITE
POTATOES **10-LB. BAG 79¢**
PIC-A-NUT
IMPORTED DATES **1 1/2-LB. BOX \$1.99**

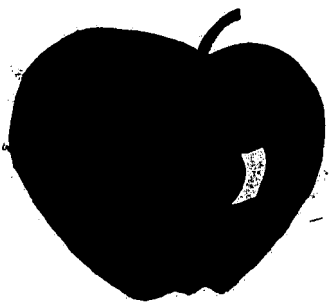
MICHIGAN No. 1
STANLEY
Prune Plums
3 LBS. 89¢



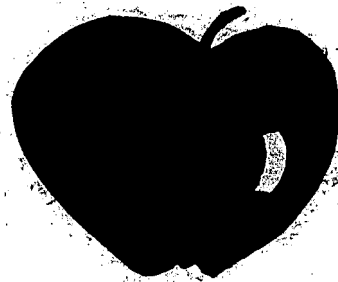
CLARKSTON
COMMUNITY
HISTORICAL
SOCIETY



CRAFTS
AND
CIDER



Sponsored By
The Following
Community-Minded
Businesses:



Huttenlocher, Kerns, Norvell, Inc.

Pontiac State Bank

Clarkston Shoe Service

Tierra Arts and Design

Haupt Pontiac

Lew Wint Funeral Home

Clarkston Cafe

Calico Cat

Duane Hurstall, Inc.

Clarkston Community

Historical Society

SEPT.
21, 22, 23, 1979

VILLAGE
PARK

the best in business This Week Lovett Jewelers

"A personal communication with the customer to give them good honest service at a fair price."

Sounds like an advertising slogan. Possibly something from a television commercial or promotion pamphlet.

In this particular case it is neither. Rather, it is Don Lovett, owner of Lovett Jewelers, and he is expressing his business philosophy in the simplest terms he knows how.

Lovett Jewelers opened this year in the Clarkston Mills Mall. It is a store that has all types of jewelry and

related items. It's 1300 square feet of showroom space has 14 and 18 kt gold jewelry, sterling silver, colored gem stones, diamond engagement and dinner rings, wall clocks, grandfather clocks and countless gift items from paper weights to Hummel figurines.

For Lovett it was a dream come true. He has practiced his trade and mastered his philosophy ever since high school some twenty-five years ago. He started working for a jeweler in Pontiac and then continued his trade in Royal Oak for several years.

Lovett's customer oriented philosophy has met with

splendid success since opening. "Many people have told us they are happy we are here," he said.

Lovett, his wife Edith and four children have lived in the Clarkston area for twenty years.

He chose to locate his new business in the Mills because "the more I looked into it, the more interested I became...I thought the Mall had been done very well...as far as decor and diversity of stores."

Although he is trying to make his store appealing to all types of clientele, he made some instant friends when the store opened with two dozen Hummel figurines on display.

"A lot of women are fascinated with them," said Lovett in explaining the Hummel mystique. Within the first three weeks the store was sold out. Lovett said he expects to replenish his supply very soon.

The rapidly increasing prices of gold are not concerning Lovett at the retail level. "The higher it (price) goes...the sales are still here," he said.

One reason the high prices have not made a dent on the retail trade is that a lot of jewelry was bought months ago when prices were at a lower level. Prices won't be higher until jewelers decide to buy more inventory. "So there are some very very good buys out there," noted Lovett.

Lovett has reserved a great deal of room to display grandfather clocks. The clocks come under the Colonial label, and are made in Zeeland, Michigan, although the movements are imported from West Germany.

Lovett said the clocks create a lot of appeal because "they require very little service and add a certain amount of charm to a home..."

The clocks come with free delivery and set-up and a two year guarantee, that's twice as long as the factory guarantees them.

The store which boasts three fulltime employees and one part-timer also offers expert watch and clock repair and jewelry repair. Service, according to Lovett is an important aspect of his operation and another way in which he can practice his customer-oriented philosophy.



Don Lovett admires his collection of grandfather clocks



Lovett Jewelers

20 W. Washington - Clarkston Mills Mall
625-2500

- Diamonds
- Watches
- Fine Jewelry
- Grandfather Clocks
- Hummel Gifts
- Qualified Jewelry Insurance
- Appraisal Services

**Offering the finest selection of
14K and 18K jewelry,
unusual designs and beautiful gifts.**



Engaged

Mr. & Mrs. Gerald Smith of Columbia Ave., Clarkston announce the engagement of their daughter, Geraldine Smith to Timothy Parkin of Columbiaville, formerly of Goodrich.

Their wedding date is November 23.

Sadoway Graduates

Mark W. Sadoway has just graduated as a certified mechanic from Mo tech, the Automotive Education Center in Livonia.

Jaycettes Donate to Crosshill Preschool

Crosshill Community Preschool, Davisburg, held its fourth annual open house on Friday, September 7. Punch and cookies were served and the children and parents were acquainted with the preschool board, by members of the preschool board, teacher, Mrs. Janet Shiel, and aid, Mrs. Carol Kelly.

At the Board of Directors meeting on Tuesday, September 4 the Davisburg Jaycettes presented the preschool with a check for \$50. The school plans to use the money for rhythm instruments, physical activity records, and books and tapes.

CAPTAIN DICK'S SEAFOOD MARKET

WILL OPEN SOON WITH THE FINEST IN FRESH SEA FOOD

CAPTAIN Dick'S SEAFOOD MARKET

5655 Dixie Highway
In The Waterfall Plaza
Waterford

COUNTRY COUNTER TOP CO.

Specialists in manufacturing counters for new homes or replacing old counters with new ones.

FREE ESTIMATES!
Kitchen & Vanity Cabinets on Display
Come & See

CHUCK FLEMING 627-4670
950 Ortonville Rd., Ortonville

VILLAGE LAMP SHOP

135 Romeo Road, Rochester, MI 48063

651-5714

Replacement Lampshades and Lamp Repair



GRAND
OPENING
SALE
20% OFF ALL

Fabric Samples - 3"
Verticals - Woven
Woods - 1" Mini
Blinds - Custom
Roller Shades

Sale Runs
Sept. 10 - Sept. 22
All Sales Final



Norma's Window Treatments

623-6519

6484 Williams Lk. Rd.

Waterford

RED WING



Shoes for work,
sport, safety
and leisure

Clarkston
Shoe Service

Shoe Repairing
BankAmericard
12 S. Main Clarkston
625-4420

3rd. ANNUAL

LANDSCAPE PAINTING Workshop in Oils by ARNOLD VAIL

Oct. 1st thru 5th 9:00 a.m. - 4:30 p.m.
Oct. 8th thru 12th 6:00 p.m. - 10:00 p.m.
Class Limit 25

Sponsored by

frames by Marilyn

437 Mill St., Ortonville
627-4006

Call 627-4006 to register and for more information

5 1/4% Daily Interest

on
Passbook Savings

Annual Interest



Member F.D.I.C.
Davisburg Medical Building
12735 Andersonville Rd.
Drive-In Window
634-5700

Hours: Mon. - Thurs. 9 - 4:30, Fri. 9 - 6, Sat. 9 - 12

*Springfield Area Residents Can Now
Place Your Want Ads at the
'Lumberyard' in Davisburg.*

DEADLINE NOON FRIDAYS

*Other Reminder Want Ad
Placement Centers -*

**Renchik's
PAINT 'N PAPER**

Independence Commons
5811 Dixie Hwy., Waterford 623-0332

**AND
Clarkston
Travel Bureau**

6 N. Main, Clarkston MI
across from Main Street Parking Lot
625-0325

women's world

Maryetta Bullard Creating a Life-Size Wetlands Exhibit for WNFGA Show

by Betty Good

Maryetta Bullard's "green thumb" is visibly reflected in the beauty of the many flower beds which fill the yard



For a more
Beautiful You.....

Lor-eo Hair Studio

5916 S. Main, Clarkston
625-1319

of the Bullards' Park Lake home.

Annuals and perennials of every type and hue line the walkways and hug a split rail fence near the drive. All seem well-suited to their particular habitats--and in "blooming" good health.

Perhaps the greatest challenge to her gardening skills, however, came when Maryetta agreed to help Mrs. Francis (Betty) McMath, of Lake Angelus, create a life-size wetlands exhibit to be displayed at The Pontiac mall during the Woman's National Farm and Garden Association's 14th annual Flower Show September 17-22. The exhibit--like the show--is to benefit the Drayton Plains Nature Center and has been months in the planning.

It involved a trip up North to transplant ferns and other wetlands species into pots to be included in the wetlands exhibit at the show and then later replanted.

It involved hours of work starting last May, when Mrs. Bullard and Mrs. McMath put on hip boots and went "swamp wading" in search of additional types of plants for the display.

These were carefully potted and left in their natural habitats in several wet locations--swamps, adjoining the Bullard and McMath homes in Clarkston and Lake Angelus, respectively, and tucked among the cattails lining the Park Lake Shore.

While searching them out to show the photographer, Maryetta quipped, "I feel like Moses' mother."

Her dedication to this task was honed by nearly 25 years as a member of the Clarkston branch of Woman's National Farm and Garden Association--an activity she now shares with her daughter, Mrs. Michael Schweitzer. The Schweitzers, also Clarkston area residents, have a son and a daughter. Dr. and Mrs. Rockwood Bullard's other three grandchildren are the daughters of Mr. and Mrs. Rockwood Bullard, III--also local residents.



Maryetta's Eastern background is evident in the occasional Virginia pronunciations which color her speech as she explains that her life revolves mostly around her home, family, guests and the garden club at present.

She formerly was active in a number of organizations, including the Nature Center Board, and working "a lot" at the greenhouse at Meadowbrook Hall, as well as on concerts and other activities there.

The Bullards have been in the Clarkston area "close to 30 years," the last 22 on Park Lake. Maryetta points out the now-towering trees which they planted as saplings so many years ago. The rolling, tree-shaded lawn on the lake side of the home is a favorite play area for grandchildren and neighborhood children.

Of the Nature Center's Mall wetlands exhibit, Maryetta says, "We're trying to show the wetlands' importance in ecology and to the environment...how fast they (the wetlands) are vanishing."

She continues: "Cards are used to identify the plant material--including those on the protected plant list--and a large cartoon board graphically shows the necessity for preserving the wetlands. One of the cartoon compares draining them to 'pulling the plug'."

The swamp behind her home may be a case in point. Legend has it that the swamp was formerly a lake connected to Park Lake by a dam. "It has been about 60 or 70 years since the dam's demise", she estimates, walking out of the seasonally-dry local wetland area.

The Nature Center's wetlands exhibit will be available for viewing during regular Pontiac Mall hours through September 22. It is located just outside the Montgomery Ward store.

Members of the Michigan Division Woman's National Farm and Garden Association will be on hand during the run of the flower show.

**WANT Ads
Make
It Happen**

ENTER THE
**7th
DIMENSION**

Discover
ZOTOS
A Perm
Especially for
Frosted Hair



20% Off
Thru September

Wash, Cut &
Blow Dry
\$10.00
Children
\$8 & \$6.00

**PINE KNOB
UNISEX SALON**

Sashabaw &
Maybee
Clarkston

625-4140



If it's for windows

It's at **Renchik's**

25%

Sept. 21 thru Oct. 31

Renchik's

paint n paper

5911 Dixie Hwy.

Independence Commons

623-0332

Wallpaper 30% Off



Country Cords will be expanding into infants and toddlers. This department will be a separate store in the Clarkston Emporium and will include well-known brand names such as Health-tex, Carters, Nannette, Polly Flinders, Her Majesty, Le Roi, Billy The Kid and Eden toys. Look for our opening in late October.

Come in and see our Fall Jackets
for boys by Pacific Trail.
Michigan and Michigan
State

sizes 4-16 **\$18.00 - \$19.50**
Coaches Jackets
Sizes 8-16
\$20.00

Winter Jackets for boys and girls by
Pacific Trail are now arriving.

COUNTRY CORDS

31. S. Main St.

625-1019

Open Daily 9:30 - 5:30
Fri. 'til 8:00

LAY-A-WAY PLAN AVAILABLE



Come to our salon and
let our professional stylists
give you a style that's right for you

Styled by: **Helene Woody**
Pam Hyde

Betty Marcks-Formerly of Jame's

673-3541

HELENE'S BEAUTY SALON

3530 Pontiac Lk. Rd.
Pontiac

Custom Monogramming at...



A
L
A
D
I
E
S'
D
E
L
I
G
H
T

A LADIES' DELIGHT

THE CLARKSTON MILLS

20 W. Washington

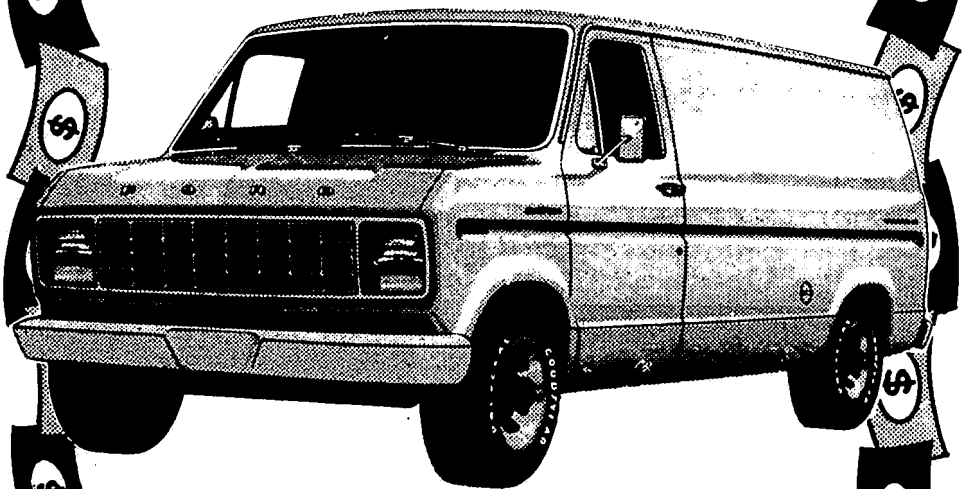
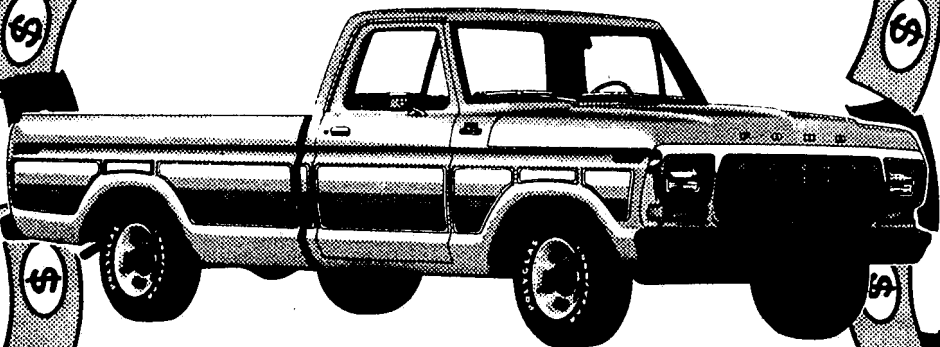
625-2900

Open Monday - Saturday 10-6
Friday 10-9

\$300 CASH REBATE

1979 FORD TRUCKS VANS & BRONCOS

V-8 Engines
57 Units in Stock
Offer Good 'till Oct. 11



ARRANTS FORD SALES, INC.

968 M-15 Ortonville 627-3730
Open Saturday til 3:00 p.m.

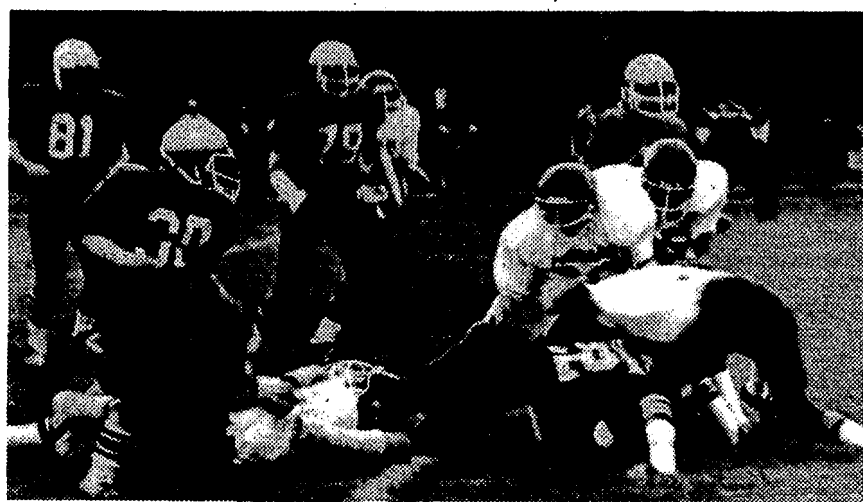
sports

This Week's Football Game Predictions

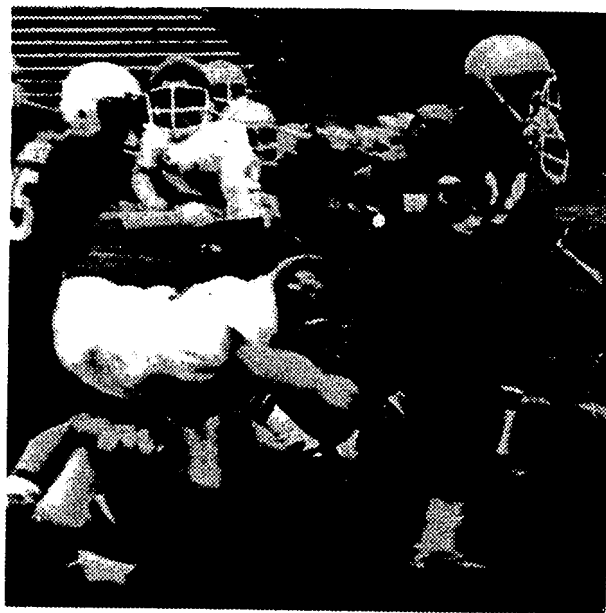
Blmfd. Hills Andover at Clarkston
Holly at Durand
Kettering at Rochester
Kansas at U of M
Miami (Ohio) at MSU
Washington St. at Ohio St.
Notre Dame at Purdue
Texas A & M at Penn St.
Minnesota at Southern Cal
UCLA at Wisconsin
Kentucky at Indiana
Nebraska at Iowa
Atlanta at Detroit
Baltimore at Pittsburg
Chicago at Miami

REMINDER COACH
STAFF CONSENSUS

Andover	Andover
Durand	Holly
Rochester	Kettering
U of M	U of M
MSU	MSU
OSU	OSU
ND	Purdue
Penn St.	Penn St.
USC	USC
UCLA	UCLA
Indiana	Indiana
Neb.	Neb.
Atlanta	Detroit
Pitt.	Pitt.
Miami	Chicago



A Clarkston Wolverine ball-carrier gets lost in a sea of Sashabaw's Cougars.



Halfback Rich Schrader drives for a touchdown.

Wolverines REign in Ninth Grade Football

ATHLETES!

Do you feel protected by the
eyeglasses you're now using for sports?

LOGO PROVIDES YOU WITH:
• CABLE TEMPLES/BETTER PROTECTION
• TOUGHER CONSTRUCTION • MINIMAL SLIDING

WE ALSO FEATURE
WINCHESTER SPORT GLASSES
• LIGHT WEIGHT (1/2 the weight of conventional glasses)
• UNBREAKABLE • SNUG FIT

Feel free to consult with us about sports glasses
which can be used for: football, racquetball, tennis,
basketball — virtually all sports!

QUALITY IN SERVICE . . . SERVICE IN SIGHT



Kennedy Optical Centers

Owned & Operated by the Russel Family of Walled Lake
2151 S. TELEGRAPH ROAD • MIRACLE MILE • 334-1911
5660 DIXIE HIGHWAY • WATERFORD • 623-1876



SPORTS CALL

A New Weekly Feature of The Reminder

Winner Gets Two Free Tickets to a Detroit Lions Football Game

ENTER NOW - DEADLINE 5 P.M. SEPTEMBER 14

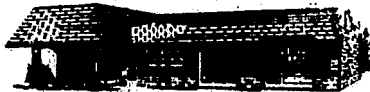
Runnin' Gear
in the
Harvard Plaza

Dixie Hwy.,
Waterford

623-7296

(15) Atlanta at (16) Detroit

**VILLA
GLASS
CO.**



CALL FOR ESTIMATE
• **628-4000**

40 N. WASHINGTON OXFORD
1 BLOCK N. OF THE LIGHT IN TOWN

All types of glass for
auto and home

(17) Baltimore at (18) Pittsburg



FOR PRINTING
WHILE YOU
WAIT &
MUCH MORE

PRINTING CENTERS
Bus. Stationary... Brochures...
Flyers... Programs... Menus
Wedding Inv... Color... NCR

4540 Dixie
Drayton Plains
674-0397



Featuring

**IN HOUSE
TYPESETTING**

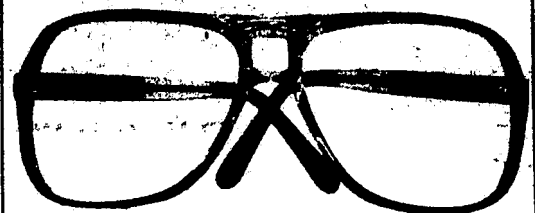
"One Stop Shop" for all your
Advertising & Printing needs.

(19) Chicago at (20) Miami



**Kennedy
Optical**

QUALITY IN SERVICE—SERVICE IN SIGHT



5000 Dixie Hwy.
Waterford

623-1876

(21) Los Angeles at (22) Tampa Bay

TIMBERLINE
Saddlery & Ski Co.

20 W. Washington Street CLARKSTON MILLS
625-4212

Back-to-School
for Kids

Levis All Sizes
8 to adult



(13) Texas A & M at (14) Penn State

The Reminder's

SPORTS CALL

Win 2 Free Tickets to a
Detroit Lions Football Game

**North
Oaks**

INSURANCE
AGENCY
INC.

3 EAST WASHINGTON STREET
CLARKSTON, MICHIGAN 48016
TELEPHONE

(313) 625-0410

Complete Insurance

(11) Notre Dame at (12) Purdue

NEW
AUTO SUPPLIES
BY

HERK'S

9405 Dixie Hwy.
Clarkston, MI
625-0500

Complete Auto Supplies
Starters & Alternators
Brakes & Ignitions

Open Daily 8-8, Sun. 9:30-2:30

(9) Miami (Ohio) at (10) MSU

football contest
rules

1. Deadline for Entries 5 p.m., Friday.
2. Person correctly picking the most winners each week will be declared winner of free tickets. Winners will be announced in the following issue.
3. In the event of a tie, winner will be determined by the tie-breaker game.

SEND YOUR ENTRY

TO

THE REMINDER
8062 ORTONVILLE RD.,
CLARKSTON 48016

For opponents and their corresponding numbers, check the bottom of each ad.

Check the Winners

Name _____
Address _____
Phone _____

1 [] at 2 []
3 [] at 4 []
5 [] at 6 []
7 [] at 8 []
9 [] at 10 []
11 [] at 12 []
13 [] at 14 []
15 [] at 16 []
17 [] at 18 []
19 [] at 20 []
21 [] at 22 []

**spring
lake**
COUNTRY CLUB

6060 MAYBEE RD
CLARKSTON
625-3731

LUNCH SPECIALS DAILY
Salad Bar - Mon - Fri 11 a.m. - 3 p.m.
Dinners - Mon - Fri 5 p.m. - 11 p.m.
Music & Dancing
Thurs & Fri 9 p.m. - 1 a.m.

Big Screen T.V.
U of M Football Games
Every Tues. Night 7:30

(7) Kansas at (8) U of M



**AUTO STEREO
CLEARANCE
NOW**

FULL LINE OF ACCESSORIES FOR C.B.
TOWERS - C.B. & T.V.
Service All C.B.'s

Store Hours
Mon. - Thur.
9 a.m. - 6 p.m.
Fri. 9 a.m. - 9 p.m.
Sat. 9 a.m. - 6 p.m.
Town & Country
674-3161
4444 W. WALTON (1 block East of State Highway) DRAYTON PLAINS
"Selling and servicing 175 Radio since 1961"

(5) Kettering at (6) Rochester

CHANDLER'S COLLISION

New Location

7071 Dixie Hwy., Clarkston
625-5066



We Do Quality
Work at a
Reasonable Price.

FREE Pin Stripes with every Auto Body
Repair

Come in for a FREE Estimate.
We handle all insurance claims.

OPEN SAT. 10-3
FOR YOUR CONVENIENCE

(3) Holly at (4) Durand



September Breakfast Special

\$1.49

Your Choice

1 or 2 Eggs - 2 pcs. Bacon or Sausage
Hash Browns or 3 Silver Dollar
Pancakes - Toast & Butter
Served from Midnight to 10 a.m. - Mon.-Fri.
(1) Andover at (2) Clarkston

Send your entry
to
The Reminder
8062
Ortonville Rd.,
Clarkston 48016

CHS Drops Second in a Row

The Clarkston Wolves Varsity football team lost to the Lamphere Rams by a score of 28-6. Lamphere was in control as they drew Clarkston for many penalties. That and other misfortunes ruined the game for Clarkston.

The Rams scored on 3 rushing plays and one pass. They stopped Clarkston cold with their passing game. Even though they only had one scoring pass, it was good for 51 yards.

Clarkston had a lot of good offensive drives, though they never benefited from them. Only once did they score. It was in the fourth quarter on a six yard run by Mike Ogans. Like last week, the Wolves had too many turnovers.

On Friday, the Wolves play Andover at home, their first G.O.A.L. game.

JV Rolls, 28-6

by John Huttenlocher

The Clarkston Wolves Junior Varsity shut down the Lamphere Rams, 28-6. The Wolves controlled the game with excellent running. Tim Ellis scored two touchdowns in the second quarter, one on a 15-yard run, the other on 7 yards. Halfback Bruce Burwitz accounted for 6 points on a 29-yard run in the third quarter. Fullback Tim Brennen caught a 42 yard screen pass from Mike Stefanski for the last touchdown.

The Rams were covered with penalties, most of them for "delay of game." The Wolves' defense didn't help the Rams either. Clarkston sacked the Rams 5 times. Leading the attack were Kevin Teague, Dave Fulchur, Steve Lemmon, Guy Hubble and Anthony Jasso. Bruce Burwitz, out to break the JV rushing record, carried the ball 11 times for 86 yards. The Wolves play the Rochester Falcons in their next game.

ARCHERY SPECIALS

Outer Compound Bow - \$38.90

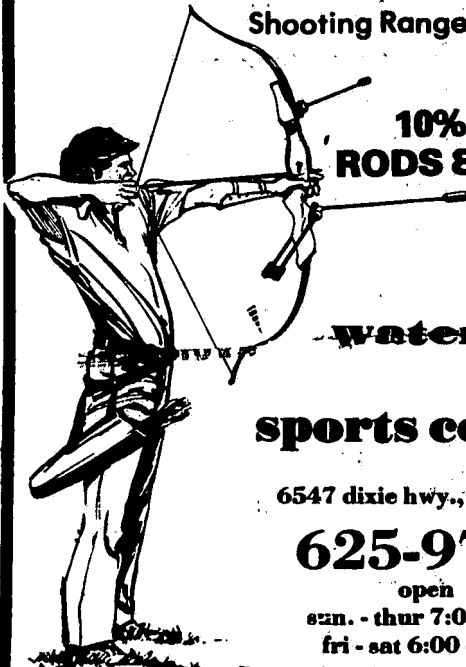
Darton Compound Bow - \$69.90

Cutting & Fletching Arrows
CUSTOM ARROWS

Camouflage Clothing and all Accessories
in Stock

Aluminum Arrows - \$18.00 Doz.

Shooting Range Available



10% OFF
RODS & REELS

waterford
hill
sports center

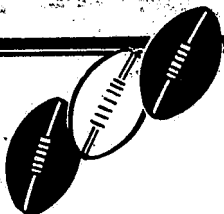
6547 dixie hwy., clarkston

625-9719

open
sun. - thur 7:00 - 8:00
fri - sat 6:00 - 9:00

SIGN UP FOR THE 19th ANNUAL

PUNT PASS & KICK



Competition!

Open to boys and girls ages 8 to 13

It's football time again...time for you to enter our PP&K competition where you can test your football skills by competing with others your own age. Winners will receive a PP&K trophy and a chance to compete in higher levels of competition. The finals will be held at the NFC Championship game.

Registration: August 18 through October 6

Registration is very simple. Come into our dealership with your parent or guardian to sign up. While you're here, be sure to pick up a free PP&K Tips Book. In it you'll find tips from the pros on how to improve your skills and prepare for Punt, Pass & Kick.

MUST REGISTER AT ARRANTS FORD

ARRANTS FORD SALES, INC.

968 M-15, Ortonville

627-3730

During the past two years we have built up quite an inventory of pieces in our showroom.

Inasmuch as we are trying to update our display goods, we have reduced prices on all our showroom pieces during September.

All pine pieces are marked down 20 - 50%.
All hardwood pieces are marked down 10 - 20%.

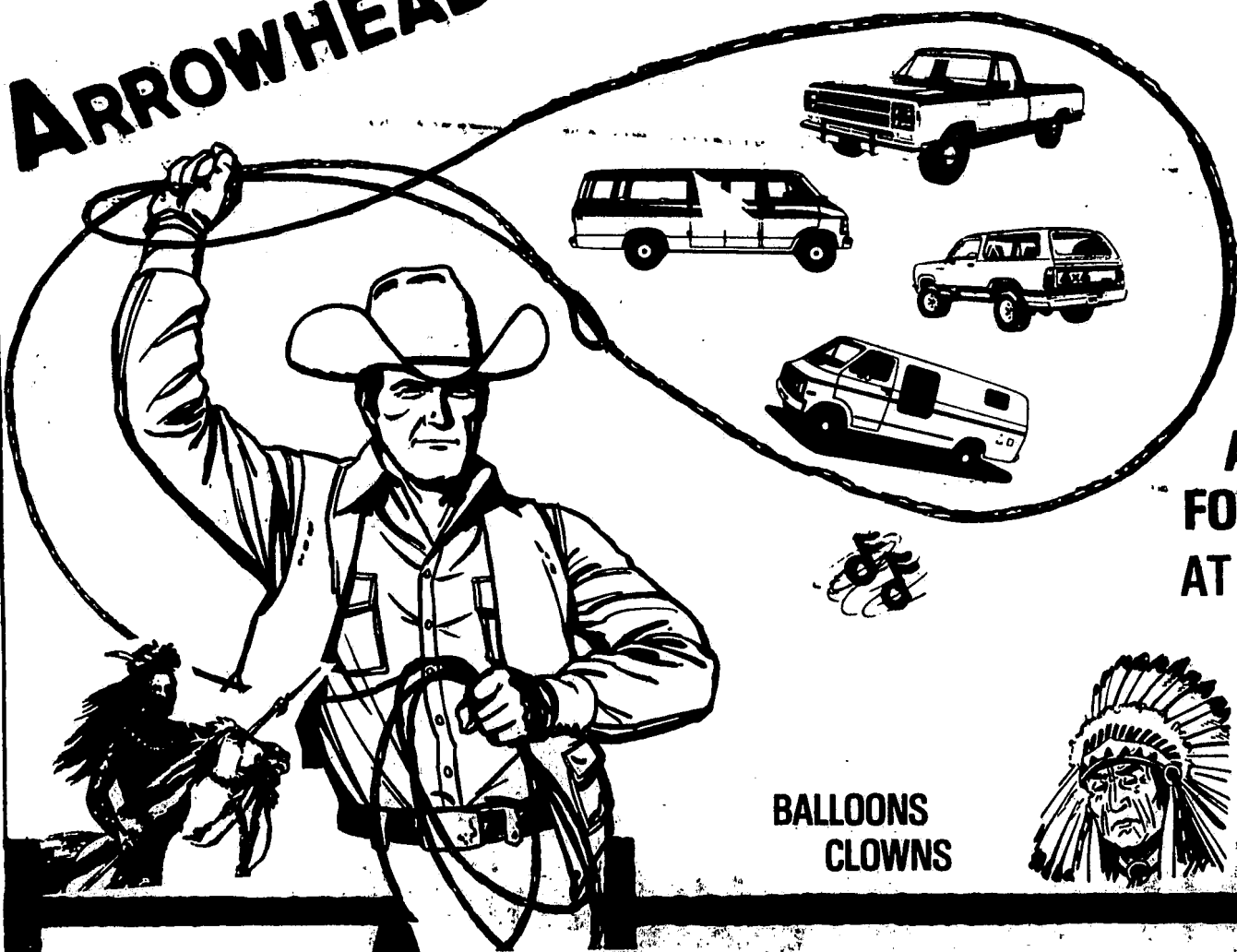
We hope you will drop our way during September. We're sure you'll find something you like--and ask us about our

Bob and Billy

CJ&B-A -BA Wood & Wax

8355 S. State, Goodrich
Ph. 636-7935

ARROWHEAD'S ANNUAL "TRUCK ROUND-UP Sale"



WEDNESDAY-THURSDAY-FRIDAY
SEPT. 19, 20 & 21
OPEN THURSDAY 'TIL 9 P.M.

ALL TRUCKS IN STOCK
FOR IMMEDIATE DELIVERY
AT PRICES YOU WON'T BELIEVE!

BALLOONS
CLOWNS



COWBOYS
POPCORN

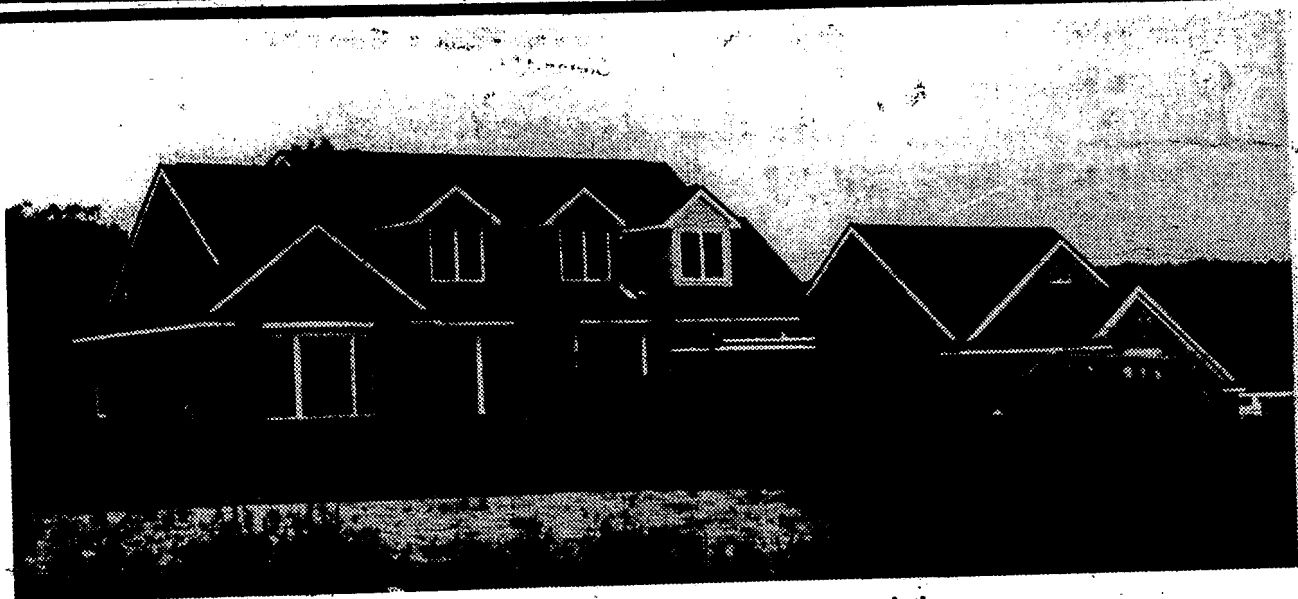


ARROWHEAD Dodge

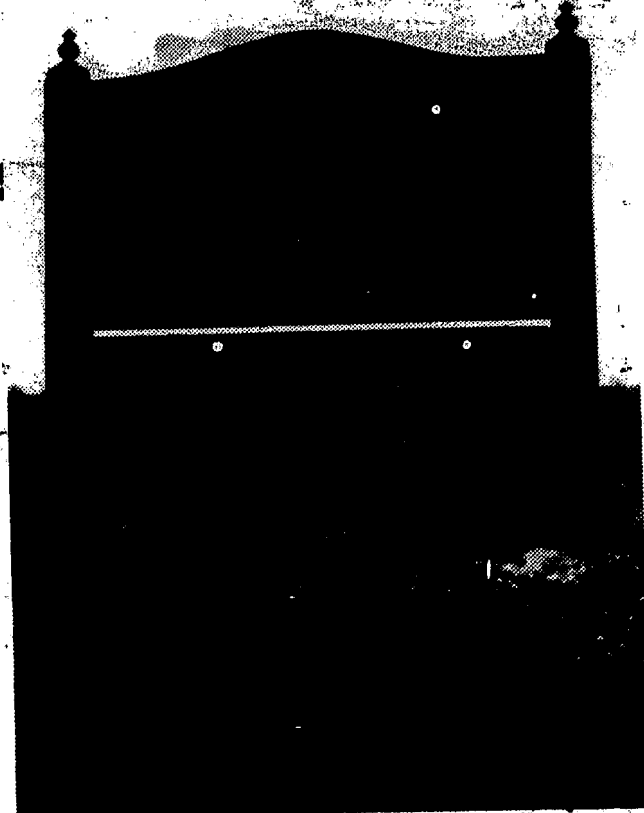
959 Oakland Ave
Pontiac, MI

338-4741

homefinder



The first house of the development nears completion



Bitterbush on Reese Road

Bitterbush Places Heavy Emphasis on Nature History

Development Comes Complete With Covered Bridge

by Mike Wilcox

John Powe has transformed a 213 acre farm into Bitterbush, eighteen ten-acre homesites that emphasize nature and history.

Bitterbush is located on Reese Road north of Clarkston. Lots sell from \$50,000 to \$150,000. Some of the lots border two lakes, Waumega Lake and its smaller counterpart, Knox Lake. Nearly half the lots have been sold despite the fact that they only have been on the market for a short time.

The Bitterbush property belongs to John and Dick Powe, and is the family homestead. Their mother still lives in an old farm house on the property. For a long

while it was used to raise beef cattle.

Recently, the property wasn't used for much of anything. As John Powe said, "It just had to be developed." Taxes were as much as \$200 a week.

Thus Powe contacted Frank Walker, who had previously developed Bay Valley Country Club and The Clarkston Mills to put his talents to work in creating

Continued on Page 36

Free Admission
Free Parking



**DAVISBURG
ANTIQUES MARKET**

SEPTEMBER 23

4th Sunday of each Month

Springfield-Oaks County Park Bldg.

South on Dixie Hwy. to Davisburg Rd. to
Andersonville Rd. 1/2 mile South of Davisburg town.

Hours: 10 a.m. - 5 p.m.

R.D. Shimmin, Inc.

Realtors

623-9692 5886 Dixie Hwy.

"If no answer call 887-3524"

TWIN LAKES SUB.

Boat and beach privileges on Tull Lake - Beautiful Brick & Cedar Ranch with full basement. Natural fireplace, 2 1/2 baths. Super Assumption on this fantastic home \$89,900.



**OPEN SUN. 2-5
CLARKSTON**

Immediate Occupancy in this brand new home with 3 bedrooms, 2 1/2 baths, formal dining room, family room with fireplace. Stained glass windows at entrance lend charm. Prestigious subdivision. Walking distance to schools and town. DIRECTIONS: M-15 north to Right on Waldon to Right at Wood Glen Subdivision.

Stop in for a cup of coffee, we can answer your Real Estate Questions.



FUTRELL & FUTRELL



CUSTOM BUILDERS

Bitterbush

Elegant Country Living

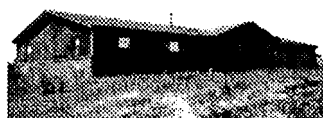
Custom home building sites are now available in this private and secluded estate located in Clarkston, Michigan. Each building site is uniquely tailored to the natural contours of the land. There are magnificent views of rolling meadows, heavily treed forests, lakes, ponds and many other features you will find only in a prestigious community. Three, five and ten acre sites are now available. Represented exclusively by Swanson and Associates in Clarkston 625-1200 in Ortonville 627-2861.

Bitterbush





LIVING IN THE COUNTRY
(SA-646) Beautiful cottage with 950 sq. ft. of living space. Lake privileges on Perry Lake, save on winter heat costs with wood burning stove and heatolater in the fireplace. Hurry won't last. \$36,900. Call 627-2861 or 625-1200.



IN THE COUNTRY
(SA-619) Beautiful spacious custom built home, 3200 sq. ft. Home situated on 3 plus acres for privacy, 4 bedrooms, 2 1/2 baths, large formal dining room, brick fireplace, beautiful kitchen with cupboards galore with built in dishwasher, plus 2 1/2 car attached garage. \$85,900. Call 627-2861 or 625-1200.



LOOK!
(SA-641) Holly Schools! Lakefront with 107 ft. on the lake. Lots of glass exposure on lake. 3 bedrooms, 2 baths, fireplace. Get ready for winter in this snug home. \$69,900. Call 625-1200 or 627-2861.

**2160 Ortonville Rd.
Ortonville, MI
627-2861**



80' FRONTAGE ON BALD EAGLE LAKE
(SA-649) Featuring Four bedrooms, 1 1/2 baths, first floor laundry room, ready for Ben Franklin fireplace, care-free aluminum siding and professionally landscaped. Double lot with lovely trees. Call now for your private inspection on this home. Call 627-2861 or 625-1200.



SOUTHERN STYLE COLONIAL
(SA-620) Stately hill-top style colonial estate on 1.5 acres with paved circle drive, access lane is curbed with paved blacktop. Four large bedrooms with master bedroom with personal full bath. Covered patio which has a million dollar view for your pleasure when entertaining. Heavenly view from every window with lots of bright colors throughout home. Call now 627-2861 or 625-1200.

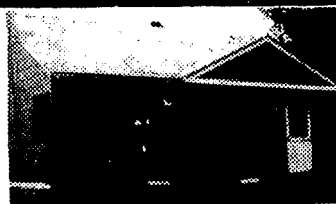


HOME OF THE WEEK OPEN SUNDAY 2-5 OUTSTANDING VALUE

(SA-653) You'll love this nice clean 3 bedroom ranch sitting in a park-like setting. Almost an acre of mature pines and hardwoods. Enjoy home ownership with a family room, screened porch, 2 1/2 car garage w/concrete driveway, fenced backyard and 15x28 above ground pool. Utility room has cupboards and closet for extra storage. Step-saver kitchen includes stove and refrigerator. \$59,900. Call today 627-2861 or 625-1200.
Directions: N. Sashabaw to right on Maybe, left on Oak Park to 554 Oak Park.



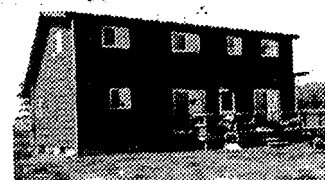
PRICE REDUCED
(SA-543) Beautiful ranch, quality constructed on a 2 acre hill-top. 3 bedrooms, den, 2 1/2 baths, sauna, family room, spacious kitchen-dining area. Has a doorwall to a redwood deck overlooking the terraced back yard. Lots of storage room and a 25x34 attached garage. Beautiful pond in front. \$89,900. Call 625-1200 or 627-2861.



MOVE IN
(SA-626) And enjoy home ownership while you finish decorating this 1127 sq. ft. bungalow. The basics are all there, new furnace, new pump, new well. You'll love the mature pear and cherry trees in the backyard; also the fenced in garden area. Call today; 627-2861 or 625-1200.



ORTONVILLE IN THE VILLAGE
(SA-650) In an historic setting this 3 bedroom home with large porch has a country decor. Yard is fenced in with spacious rear yard, old fashioned wood moulding around door wall and wood railing along stairway. Close to school, shopping and recreation areas. Call now! \$24,900. 627-2861 or 625-1200.



COUNTRY LIVING ON 5.59 ACRES

(SA-545) Large newly built family home in Holly. Cedar deck off dining area overlooking rolling farm land. Full basement and large kitchen with dishwasher and lots of built-ins. Extras in cupboards. Call 627-2861 or 625-1200.



A COUNTRY ACRE

(SA-640) You'll be impressed as you view the spacious grounds from the large family room. 3 bedrooms, with lots of closets, brick fireplace in family room spacious kitchen and formal dining room. Ranch style fen-um ranch. \$64,900. Call 627-2861 or 625-1200.



SUPER HOME

(SA-644) New on the market, has everything. 3 bedrooms, family room, wall fireplace, basement, rec. room. Priced in the mid-sixties. Call now for private showing. 627-2861 or 625-1200.

**10740 Dixie Highway
Clarkston, MI
625-1200**



COUNTRY COLONIAL

(SA-476) This new quality built home situated on 1.2 acres, features 4 bedrooms, 2 1/2 baths, family room with fireplace, formal dining room, 1st floor laundry room and all the comforts of country living. \$85,900. Call 625-1200 or 627-2861.




PRICED TO SELL

(SA-632) You'll love this large, modern 4 bedroom Tri-Level where quality is evident throughout. Like the huge oak mantle over the fireplace in the family room, the 19 1/2 x 6 1/2 heated workroom behind the garage; the oak cupboards in kitchen; ceramic tile in baths; lots of closets and a heated crawl space with lights and concrete floor for storage. Owners in hurry to move out of state, willing to include all window dressings, workbench in garage, stove, refrigerator, dishwasher, water conditioner and iron filter. Call today. 627-2861 or 625-1200.

BOB Swanson & Associates INC.

NATIONWIDE REAL ESTATE SERVICE

CLARKSTON 625-1200  ORTONVILLE 627-2861

REALTOR®

MEMBER HOMES FOR LIVING Network OFFICES IN ALL 50 STATES

MLS

Due to our recent upsurge in business, we find that we have openings for a few salespeople in our two offices. Licensed or Unlicensed. Please call for an interview. 625-1200 or 627-2861.



IMMEDIATE POSSESSION
(SA-642) Close to everything and yet that country atmosphere you will experience when you comfort yourself in this 5 room energy saving home on almost an acre of land. Good carpeting, stove, refrigerator and drapes all included. Call 625-1200 or 627-2861.



GROVELAND TWP.

(SA-578) Come out to horse country 10 acres, Cape Cod, 4 bedroom home. Lovely sweeping pines greet you as you approach this country estate. Barn with stalls and attached covered riding arena. This is truly a bargain at the low price of \$94,900. Holly schools. Call 625-1200 or 627-2861.



COUNTRY ESTATE

(SA-552) Brick and cedar ranch with pond site in front of home. Four large bedrooms, full bath off master bedroom. Heavily wooded acreage in country setting. Home site is approximately 1000 ft. off road. Large kitchen with nook. 2 1/2 car garage. \$118,900. Call 627-2861 or 625-1200.

CHOOSE YOUR HOME SITE

(SA-647) Beautiful building site in prestige area of Brandon Township. Rolling with trees, ideal for horses. 10.02 Acres. Private road. \$50,000. Call 627-2861 or 625-1200.
(SA-622) Secluded, hilly and wooded, 2.04 acres in Brandon Township. Perfect for walk-out. Lots of privacy. \$19,900. Call 627-2861 or 625-1200.
(SA-607) 1143 ft. frontage on Thread River. Perked and Surveyed ready to build on. Blacktop roads in ten acre estate development with fine homes. \$32,500. Call 625-1200 or 627-2861.
(SA-608) Approximately 21 acres in Springfield Township. Hill, wooded with pond site, railroad frontage, great possibilities. \$45,000. Call 625-1200 or 627-2861.

Furnace Burning your Dollars? Install a Wood Burning Stove

Over 35 Models on Display To choose From

*ATLANTA *TIMBERLINE
*FINDLAY-OVAL *RITEWAY
*JOTUL *SHENANDOAH

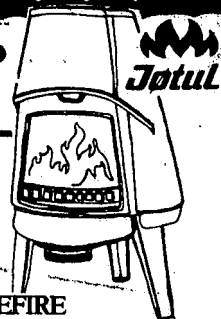
*UPLAND *FIREVIEW *SUREFIRE
*FRONTIER AND MORE

USE OUR LAY-A-WAY PLAN 90 Days Same
as Cash or Up to 24 Months to Pay (with approved credit)

J & J ACE HARDWARE

2015 AUBURN AT DEQUINDRE
UTICA • 731-7337

Same Owners Serving the Area Since 1945



*TIMBERLINE
Mon.-Sat. 8:30-6:00,
closed Sun.



Check our Best Seller List!



Starter Home - 1150 sq. ft., 3 bedroom ranch home with one full bath and gas heat. On nice sized lot. Ortonville Schools. \$35,900.

Brick Ranch - On 1 acre with 3 bedrooms and 2 baths. Room for a large family with 3 more bedrooms in the partitioned basement. Fireplace in family room. Gas heat. Ortonville Schools. \$67,900.

Original Farmhouse - Beautifully restored with 4 bedrooms and 2 full baths. Country kitchen with built-ins, stone fireplace, partial basement. Two outbuildings, including a two story barn with water and lights. On 2.5 acres. Ortonville Schools. \$79,900.

Land Contract Terms are available on this 1800 sq. ft. brick ranch on 5 acres. With 3 bedrooms, 2½ baths, stone fireplace, first floor laundry, walkout basement and 2½ car garage. On paved road. Ortonville Schools. \$100,000.

Appealing Ranch Home on 5 Acres. With 4 bedrooms and 3½ baths! Over 2000 sq. ft. with full walkout basement, fireplace, wood burning stove and deck. Hot water heat. Ortonville Schools. \$99,500.

Like Privacy? Then you'll love this 4 bedroom, 2½ bath home and its 10 acre setting. Has fireplace, walkout basement, 2 car garage, pond and horse barn. A truly beautiful home. Holly Schools. \$129,000.

Horse Farm with 3 bedroom brick and aluminum ranch featuring 1½ baths, family room with fireplace, basement and 2½ car garage. 30x50 barn with attached 40x70 indoor arena. Don't miss this one, horse lovers. Ortonville Schools. Land Contract Terms. Reduced to \$79,900.

Spread Out in this dream home. 4 bedroom Tri-Level on 1.4 acres on a quiet private road. Wood windows, intercom, wood and brick construction all just a few of the features. Ortonville Schools. \$86,900.

Feast Your Eyes on this wood sided contemporary in Clarkston. 2 skylights, wrap around deck, 5 bedrooms and 2½ baths. Features full basement, fireplace, 1st floor laundry, intercom and more. On a well landscaped, pine covered lot. \$125,000.

Just Listed - Spacious 3 bedroom Aluminum Ranch with full basement and 2 car garage. Gas heat, on nice lot. Goodrich Schools. \$43,900.

Picture Perfect Cedar sided quad with 3 bedrooms, 2½ baths and 5 wooded acres. Has fireplace, full bath off master, deck and wet bar with fridge. A dream come true. Ortonville Schools. \$89,900.

Stately - 4 bedroom remodeled farmhouse on 5 acres. 1½ baths, brick fireplace, large country kitchen, 1st floor laundry and enclosed porch. Several barns and outbuildings. Additional acreage available. Goodrich schools. \$95,000.

Get Into the Country - 1500 sq. ft. 3 bedroom Ranch on over an acre. Newly decorated, with attached garage, storage shed and nice yard with many trees and shrubs. On paved road. Goodrich Schools. Only \$42,500.

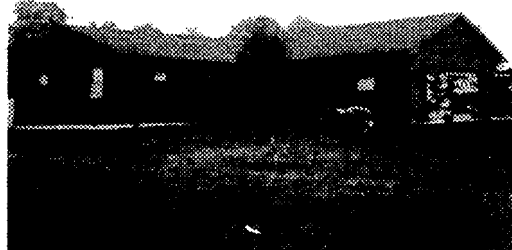
New England Farmhouse with so much to offer! On 13.5 Acres with 1,000 apple trees on a paved road. 2,450 sq. ft. of living area with 5 bedrooms and 2½ baths. Hard wood floors, brick fireplace, first floor laundry, full basement, barn with water and lights and so much more. Call for more details. Goodrich Schools. \$126,900.

EVANS
and Associates, Inc.

2 Offices to Serve You in

WATERFORD
3756 Sashabaw Road
Drayton Plains, MI
674-4191

WHITE LAKE
9201 Highland Road
Pontiac, MI 48054
698-4300



"COMFORTABLE LIVING..."

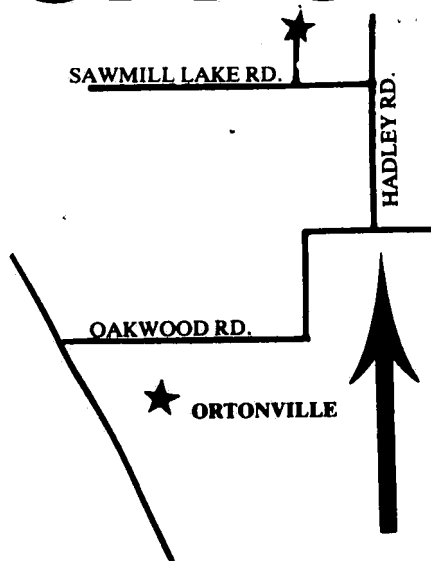
That's what this spacious ranch home offers. It's located on a corner lot in Brandon Township. This sharp home has a beautiful brick fireplace in the living room and 2 full baths. The extras are numerous. Call us for all details, asking price is an unbelievable \$74,900.

"Setting the Pace in Real Estate"



GALLERY OF HOMES

WE BRING
People Home



OPEN HOUSE

Sun., Sept. 23 (1-6)

5791 Honert Rd.

Country Setting, Cathedral Ceiling, Charming Franklin Stove, Conservation of energy built-in. Come see us this Sunday. \$63,900.

3,000 FT. COLONIAL ON 5 ROLLING ACRES

This home features 5 bedrooms, library, family room with fireplace and outside, many pine trees and swimming pool. \$125,000.

JUST REDUCED

We want you to see this lovely 3 bedroom colonial in southern Brandon Township. Close to blacktop and I-75, central air, maintenance free exterior. \$89,900.

Many Building Sites Available \$13,000 and up.

Complete Building & Remodeling Service

BROWN & HARDING, INC.

2245 M-15, Ortonville

627-2851



BARRY YOUNG & CO.

REAL ESTATE

252 M-15, Ortonville

627-2838

636-7763

Bitterbush

Continued From Page 33

OWNER MUST SACRIFICE!!

This spacious home is set in a lovely country neighborhood (so your children will find it easy to make plenty of new friends). Extras include fenced yard, pool, Rec. Room and more. Over 2000 sq. ft. of living area but UNBELIEVABLY PRICED in the 60's. Call Larry or Joan Nawrocki 627-2832 or 628-1863.



REAL ESTATE 217
1963 M-15, Ortonville
627-2832



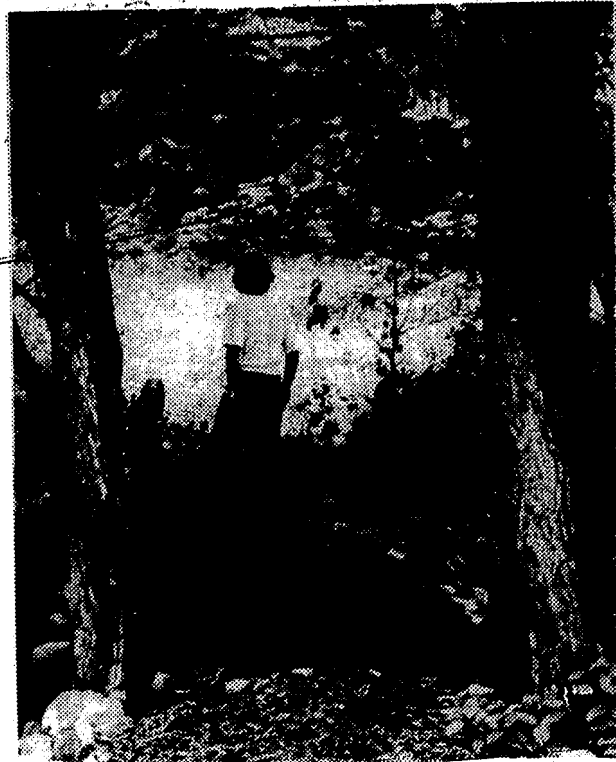
Bitterbush.

Walker added a historical flavor by creating a covered bridge to be constructed on the main road leading through the development. According to Walker when the bridge is constructed it will be only the second to be built in Michigan in the last 100 years.

Nature also plays a prominent role in the development. Powe said, "The land means a lot to me. How it is developed means a lot to me."

Powe's idea of development brought "nature" to the forefront. He insisted on nature trails, bridle paths and preserved wetlands as part of the overall scheme. He also drew up a list of protective covenants that specify in very specific terms what a landowner can and cannot do in Bitterbush.

One may ask, why the name Bitterbush. For Powe, it has a particular meaning. Powe, who used to be an avid backpacker, visited a friend and spent a lot of time a couple of years ago out west. His friend made a living selling Bitterbush, a plant that grows in the mountains, to the government. The name stuck and now is the title of one of this area's most exclusive developments.



See the Investment Specialists

ASK
FOR



Larry Sam Nabi
Associate Broker Sefa

ASK
FOR



DON'T SPIN YOUR WHEELS

Looking for that New Home or Investment Property

Let us help you do it now!
Why wait - Your dollar
can grow...



RAKE IN THE MONEY...

AFTER HOURS

629-5533

FREE APPRAISALS
OFFICE



627-2861



EVERY OFFICE INDEPENDENTLY OWNED & OPERATED

McANNALLY REALTORS
MOVE RIGHT IN

New quality built 3 bedroom ranch in a nice quiet area of Clarkston. First floor laundry, full basement, 2 1/2 car garage, half acre lot. Priced in the low \$80's. Call and ask for #1198.

CLARKSTON LAKEFRONT

Leisurely living and land contract terms go with this 2 bedroom brick home in Springfield Twp. Full brick fireplace wall and cathedral ceiling accents the spacious living room. Call and ask for #1195.

SO NICE

To come home to! Large trees accent this well kept home in Waterford Township. The special features include a fireplace in the living room, full finished basement, 2 full baths, a large garage and a real value at \$49,900. Ask for #1181

7010 Dixie Hwy., Clarkston 625-1300



STATELY "1875" FARM HOUSE

Nine rooms, 3 bedrooms, dining room, fireplace. Definite architectural qualities, set on lovely pine-treed lot. Mortgage 9 1/4 % only \$99,500.



SECLUDED IN WATERFORD!

Lovely home full of personality and charm. Over 1550 sq. ft. of living space. All on approx. 2 1/2 acres with many mature trees. All for \$65,900.



CLARKSTON WATERFORD OFFICE
Established 1895
5 South Main St
Clarkston, MI

623-7800

3 OFFICES TO SERVE YOU



ROOM INSIDE

With this 4 bedroom home. Has full basement and fireplace plus many extras. Room Outside with 4 acres and a spring fed pond.

LAKEFRONT

Won't you come and see! I'm a remodeled cottage waiting for a family to fill my rooms and swim on my beach. You can afford me too!



WALLS REAL ESTATE

627 Broadway, Davisburg
634-4453



MEMBER OF NORTH OAKLAND BOARD OF REALTORS
MEMBER OF FHL (FENTON, HOLLY, LINDEN) EXCHANGE
MEMBER OF BRANDON, INDEPENDENCE, SPRINGFIELD EXCHANGE

business beat

Nan's Completes Salon Remodeling now Offers More Services



Inside Nan's large salon.

If you remember when...People were important...If you want full service in personal grooming...Nan's has it! While Nan appreciates the other good hair styling shoppes in the area, she feels her service and prices are second to none. With all sincerity, Nan intends her shop to be customer oriented and price indicative of her commitment "To giving people what they pay for," unusual to this age of high prices and low service.

Nan has been in business for seven years and moved to her present location, 4194 Airport Rd., 3 years ago. Nan has just completed remodeling her large salon so that anything her customer needs for his or her own personal look is at their fingertips. Nan specializes in fitting you with the look you want by a consultation with you and by hiring 13 hair design specialists to help her customers in finding personalized grooming with a specialist you can trust and that style you want!

Nan says: "I don't cater to any one class of people, we make anyone comfortable and do any hair style the customer requests. Men and women are both welcome and respected at Nan's."

ENROLL NOW
For an Exciting Career
in cosmetology



State College of Beauty

2165 S. Telegraph Rd.
Bloomfield Hills, MI 48013
Phone 335-9249
Located: Miracle Mile Shopping Center,
3 doors N. of J.C. Penneys

**"Beat Inflation with
an Education!"**

**A professional career
in less than a year.**

- Classes start second Tuesday of each month
- Financial aid or payment plan
- Receive diplomas in make-up artistry, personality development
- One week vacation
- Supplies include:
Full kit plus Jamie Flight Bag featuring Jamie pouch with make-up, blow dryer, curling iron, mannequin stand, and textbooks.

We do all beauty services at fantastic savings!
All work done by senior students

Call 335-9249
for appointment

**SAY YOU
SAW IT IN
THE REMINDER**

**NEW
FALL
ARRIVALS
EVERYDAY!**

**50% off
on
selected
new
fall
merchandise
at . . .**



5926 S. Main,
Clarkston

625-5430

Hrs.: 10-6 Mon.-Sat.

BACK-TO-SCHOOL Band Instrument Sale

Choose From:

- Yamaha • Selmer • Normandy • Leblane
- Armstrong • Signet • Premier • Gemeinhardt
- Ludwig • Plus Much More

BUY NOW AND SAVE
We also have a rental program
available for beginners.
Call us before you buy!

VISA Bank Financing M/C

Flint Music Center

2913 S. DORT HWY.
2 Blocks North of Dort Mall
FLINT, MICHIGAN 48502 PHONE CE 9-1406

PRE-WINTER SALE



can't hardly plug it!

**Get tough! Get a tough Case tractor
with a snow blower.**

Wet snow, dry snow, packed snow — this
one gobbles it up — packs it up and puts it
where you want it!

Get tough! Get a Case!



**Buy Now at '79 Prices While
Supply Lasts**

WE SERVICE WHAT WE SELL AND REPAIR OTHERS

MG SALES

4667 DIXIE HWY., DRAYTON PLAINS

OPEN MON. 'til 8, TUE-Fri. 9 to 6. Sat. 9 to 3

673-9081

673-6458

delightful davisburg

UPDATE

**A Collection of Events Occuring in
Springfield Township**
Call 627-2843 to get your event listed

September 19
Rotary, 7:00, Town Hall
September 20
Andersonville Elementary School Open House, 7:30;8:30
Springfield Township Zoning Board of Appeals, 8:00, Town Hall
September 24
Springfield Township Library Board, 8 p.m. at Library
September 25
Cub Scouts, 7:30, Town Hall
September 26
Rotary, 7:00, Town hall
September 27
Open House-meet the Staff, 7-8:30 p.m. at Davisburg Elementary
September 30
Dixie Lake Assoc., 3:00, Town hall
October 1
Rotary Anns., 7:30, Town Hall
October 2
Springfield Township Planning Commission, 7:30 Town Hall
Cub Scouts, 7:30, Town Hall
Camp Fire Girls Leaders Assoc., 7:30 at Clarkston High School
October 3
Springfield Township Board Meeting, 8:00 Town Hall
Rotary, 7:00, Town hall

This Calendar Sponsored by:

City Beverage Co., Inc.

Harold Cousins Dave Anderson
Homer Hogan Marguerite (Kitty) Topham

3 Warehouses:

1001 Dixie Hwy. 979 Ladd Rd. 1020 Doris Rd.
Clarkston Walled Lake Pontiac

**Drywall - Plaster
brick -**

Mason Supplies

**Imperial Drift Stone
Cultured Stone
Reclaimed Brick**

**LAKELAND
BUILDING SUPPLIES**

625-8995 9700 Dixie Hwy. Clarkston



Herk with arm around his new manager Jerry Wolfe

Davisburg Welcomes a New Auto Supply

Fixing your car on Saturday and can't buy the needed part? Now you can, from HERK'S AUTO SUPPLY, 9405 Dixie, Clarkston (across from Bridge Lake Market). Opened in July by Jerry Wolfe, Herk's is a branch of the 3 other Herk's establishments, 2 located in Pontiac and one on M-59. They carry a full line of auto supplies

and also rebuilt alternators and starters. Some of the brands carried by Herk's are AC, TRW and S & K tools. They are open daily 8 - 8 and Sunday 9:30 - 2:30. Jerry, wife Donna and their three children live in Holly.

BRIDGE LAKE MARKET

On our 3rd Birthday at Bridge Lake Market, we would like to thank everyone for their support!

Joanne & Michael Ganley

Groceries - Ice - Bait

Beer - Wine

Packaged Liquor

625-4470

9420 Dixie Hwy.

Clarkston

DIXIE AUTO BODY

**COMPLETE COLLISION SERVICE
24 HOUR TOWING**

Wheel Alignment and Balancing

9875 Dixie Highway Davisburg 625-4848



SHOWROOM EXPANSION CELEBRATION SALE

**ALL MERCHANDISE 10 - 40% OFF
WED., SEPT. 19 - SAT., SEPT. 22
"IN STOCK MERCHANDISE ONLY"**

DON'T MISS OUT ON THESE BARGAINS!

40% Off

Garden Seeds - Nails - Friendship Birch Paneling
Cedar Closet Liner - Briggs & Stratton
& Tecumseh Parts
Trees & Shrubs - Walnut Paneling - Bagged Peat
Minnow Buckets - Cane Poles - Hot Seats
Wood Stoves

30% Off

Fiberglass Sill Seal - Sturdy Brace Heavy
Duty Insulated Sheathing - Cedar Pet
Bedding - Fertilizer - Moulding
Cuprinol (Stain Preservative)
Treated Lumber

20% Off

Garden Hand Tools - Fertilizer - Spreader
Snapper Mowers - Cement & Mortar
10% everything else including Stihl Saws
Hunting & Fishing Licenses
Cannot be Discounted

"The Lumber Yard"

Davisburg Building & Landscape Inc.

13180 Andersonville Rd.

Davisburg, MI.

625-2471

634-1673

Independence Planners Discuss Pine Knob Strategy

by Carol Balzarini

The Independence Township Planning Commission met in a study session last Thursday to discuss procedures of rezoning and site plan approval and the township Master Plan and potential amendments.

The first item was in preparation for Pine Knob's appearance before the planning body scheduled for September 27.

Chairman Jim Smith prefaced the discussion by referring to certain "grey areas" in site plan approval and asking attorney Richard Campbell about a "hypothetical" situation.

If a site plan were presented but not allowed under an existing ordinance but with an anticipated change, what was the planning commission to do?

Campbell told them they were not allowed to approve any variances, only the Zoning Board of Appeals could do that. Planning commissions, he said, had minimal authority.

"You really don't have much discretion," he added. "It's a matter of 'yes' the site plan complies or 'no' it doesn't."

Campbell went on to tell them he felt the pendulum

was swinging back toward the individual with him being allowed to develop his land as he saw fit, not as others such as environmentalists told him to develop.

Planner Tod Kilroy told commission members they were not required to review *all* site plans but he felt it was good public relations to do so. Public review worked out better in the long run.

He said, however, that if people were being held up by that procedure and demanding what was in the ordinance, site plans could be reviewed administratively, that is, by him and/or Tim Palulian, head of the township building department.

Mel Vaara asked what would happen if no quorum were present on the 27th or if a motion were made to table? Would there still be time for the question of the Pine Knob hotel to go before the ZBA?

Campbell said the commission was not required to "break its back" to act but they should be reasonable. "You can't table just because you don't want to act," he said.

Jim Brennan asked what would happen if Pine Knob were okayed prior to the October 16 special election.

Since the only legal question on the ballot deals with use, that is the only one to be concerned with. Campbell said *use* was the big question and there were "no firm answers."

Procedures to be followed by Pine Knob include appearance before the Planning Commission on September 27 for site plan and conditional use approval.

The next step is to appear before the ZBA at a special session scheduled for October 10 for both conditional use approval and for granting of a height variance. Present zoning only allows 35 feet, Pine Knob wants 200 feet.

The Planning Commission then will have the opportunity to give final site approval, most likely after the October 16 special election.

Palulian explained later a special meeting of the ZBA was necessary to give him the required time to advertise. There would not be enough time between the September 27 Planning Commission meeting and the regularly scheduled ZBA meeting on October 3.

He also reiterated Campbell's position that no one really knows for certain what happens if the ZBA says "yes" to the hotel and the voters say "no."

Palulian added that Pine Knob was "anxious" to beat the referendum date. "Pine Knob has a vested interest in trying to gain approval before the election which may help them in court, but they are also fully aware of the referendum at the same time."

In the second matter on the agenda, some members of the Planning Commission were concerned because the Master Land Use Plan map and the zoning map did not agree in the residential classifications. The inconsistencies have, apparently caused some problems.

Kilroy said there had been similar problems in adjacent communities and the commission might wish to make some changes.

Smith described the Master Plan as a "projection of where you will be" and the zoning map indicates "where you are."

The two parcels of land which prompted the discussion were sixty acres on Maybee Road on the edge of the township and forty acres on Sashabaw Road

belonging to planning commission member Jim Brennan. Both are currently zoned R 1 R, rural residential with lot sizes of three or more acres even though other lots in both areas were smaller.

The point of the matter appeared to be one of interpretation. What lot size constitutes a rural classification and what size would be considered

Continued on Page 40

Le Framerie

Complete Custom Framing & Wall Consultation Service


Free Pick-up & Delivery, Home or Office

M.C. & Visa

625-3600

"Low rates are a big reason we're the largest home insurer. But there are more..."

Low rates wouldn't mean much without our first class service. Drop by, or give me a call.



Bud Grant, C.L.U.
Clarkston Cinema Building
625-2414

Like a good neighbor, State Farm is there.

STATE FARM FIRE AND CASUALTY COMPANY
Home Office: Bloomington, Illinois

SPORTSHACKS EXCLUSIVE FRANCHISES NOW AVAILABLE IN MICHIGAN.

Join the Multi-billion dollar sporting goods industry with a SPORT SHACK franchise.

Start your business right in your home, part-time or full-time and open a "SPORT SHACK" store.

\$1500 minimum franchise fee depending on population of area.

Over 600 Sport Shack franchise owners in 40 states are part of a system that:

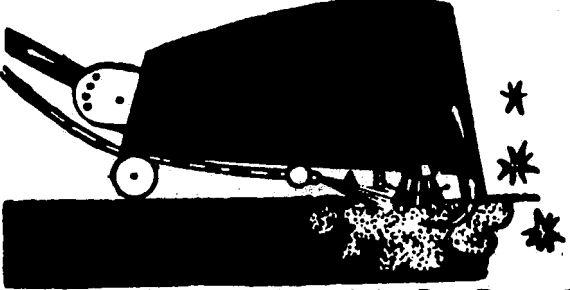
- Doesn't require inventory
- Has factory direct prices with over 200 sporting goods manufacturers.
- Provides central Sport Shacks Inc. buying
- Provides central Sport Shack Inc. billing
- Has many other franchise support systems.

The initial franchise fee shall be \$1,500 for franchise areas of 100,000 population or less; for each additional 100,000 population or fraction thereof exceeding 50,000 existing in the franchise area, the initial franchise fee shall be increased by additional increments of \$1,000. In no event shall the fee exceed \$50,000 where the franchise area is the county and \$25,000 where the franchise area is the city, village or township. The initial fee is payable by franchise at the time the franchise is issued. The franchise may be renewed each year thereafter upon payment of an additional annual renewal fee of One Hundred Dollars (\$100.00).

"PURSUANT TO THE MICHIGAN FRANCHISE INVESTMENT LAW, SALES MAY NOT BE MADE UNLESS A PROSPECTUS HAS BEEN DELIVERED ONE WEEK PRIOR TO ENTERING INTO A FRANCHISE AGREEMENT OR PAYING CONSIDERATION."

For more information call or write Don Thompson, Sport Shacks, Inc., 1310 East Highway 96, St. Paul, Minn. 55110. Phone 612 426-0072.

The ultimate in steam cleaning is only a phone call away!



Note this bottom-side view of the Rug Doctor Vibra Brush method carpet cleaner in action.

- Hot water and cleaning solution jets into the carpet.
- Vibra Brush (like electric tooth brush) agitates carpet back and forth 3,400 times each minute. This breaks soil loose and polishes each carpet fiber to a clean, brilliant finish. This type of brush does not distort pile.
- Powerful suction extracts hot water and loosened soil back up to waste tank.

We are the only cleaner in the area that has the VIBRA-VAC METHOD

For more information or **FREE ESTIMATE on Carpet or Upholstery Cleaning....**

Call 625-0911

VILLAGE STEAM CLEANING

Carpet & Upholstery - Residential - Commercial

SAY
YOU SAW IT
IN
THE REMINDER

"CEILING FANS"

Over 100 Models, Styles, Sizes and Colors



Cuts Air Conditioning Bills 50%

Save to 40% of Heat Bills

Industrial & Commercial Heat Recovery Fans


HERON'S NEST

102 W. Maple, Holly
634-5442

A CAREER IN BUSINESS

EXCITING TRAINING! FAST!

- Executive Secretarial
- Legal Secretarial
- Medical Secretarial
- Fashion Secretarial
- Accounting
- Fashion Merchandising Management
- Grants
- Scholarships
- Loans



Winter Term Begins Nov. 19th.
Applications now being accepted

Student of the Week
Janet Sheffer

PONTIAC BUSINESS INSTITUTE
Oxford Campus
628-4846

Continued from Page 39 Planning Commission

suburban?

Brennan contended that rapidly rising assessments coupled with sewers proposed for the area in addition to the ad valorem tax presently assessed made three acre lots unreasonable.

Campbell told commission members, the more "reasonable" any zoning was, the more defensible it was in court. He went on to say the Master Plan was advisory, a concept of what the township would look like when development was completed.

"It loses its validity as time passes," he said.

A conflict between the two maps could be because they were adopted at different times, he continued, or

because the township board chose a different path than the planning commission recommended. But the inconsistencies must be explained.

Mel Vaara said he considered the zoning map to be the more important of the two. He also felt people wanted to keep three acre minimums wherever they were.

Smith concurred saying, "Not everyone who owns an acreage parcel wants to divide it. I have forty acres, I want it to stay that way."

A motion to have individual members make recommendations to Kilroy was defeated on a voice vote. Another motion to have Kilroy begin the updating process in January, which can take a year or more to complete, was approved.

In the meantime, the acreage parcels which prompted the action are both on the agenda of the September 18 township board meeting.

You Are Invited **St. Trinity Lutheran Church** (Pine Knob) 7925 Sashabaw Road, Clarkston **Missouri Synod**
SUNDAY WORSHIP 8:30 & 11:00
SUNDAY SCHOOL 9:45
Rev. Ralph C. Claus Phone 625-4644

Bring In This Ad For Additional Discount

OOP'S We Overstocked!

CANARY SALE!!!

Good Prices \$ on **HEALTHY PETS**
We Specialize In: Fish, Exotic Pets, Birds & Reptiles



PECULIAR PETS
5150 Highland Rd
Pontiac M-59 Plaza
673-2444

Hrs. Mon-Fri 10 a.m.-9:00 p.m.
Sat. 10-6:30
(Bring In This Ad For Additional Discount)

MERIDIAN

Eat, Drink & Enjoy!

HAPPY HOUR
Mon. - Fri. 4 p.m. - 7 p.m.

OPEN 7 DAYS!
Live Entertainment Friday-Saturday
NOW APPEARING
BOB POSCH

Open Sunday 11 a.m. - 12 Midnight
Open Daily 9 a.m. - 2 a.m.
Weekend & Bar Food Available

formerly "The Voyager"

Salad Bar Available
TRY OUR SEAFOOD

THE MERIDIAN

Restaurant & Lounge
Clarkston-Pontiac Airport
Lounge Open Daily
6500 Highland Road Pontiac
666-3780 81

WALLPAPER ALL BOOKS 15 - 20% Off


Special Discount to All New Home Buyers

In Home Demonstration
B & R Carpet Co.

952 Ortonville Rd. 627-2490
Ortonville, Mi Mon. - Sat. 10:00 - 6:00

SAVE 60%
• UP TO \$200 PER MO. IN HEATING COSTS

'Better n Ben's



FREE STANDING & REPLACEMENT WOODBURNING STOVES

SUTTON'S D & D Sales
62 S. Holcomb
Clarkston, Mi 48016
313-625-9335

Yes... Decorating Den is in your Area.




LINDA BOYER
"I want to be your Decorator"

Free Professional Decorating Service
No Charge-
No Obligation



The Colorful Store that comes to your Door.
625-3353

Christine's Delicatessen

Corner of Dixie and M-15
CLARKSTON SHOPPING CENTER
625-5322 Open Daily 7:30 a.m. to 9 p.m.
Sunday 9 a.m. to 6 p.m.

KOWALSKI Smoked & Roasting Kielbasa \$1.89 LB.	
MAC DONALD Cider Break \$1.09 GAL Low-Fat Milk \$1.39 GAL	DAZA BAKERY 1 1/2 LB. LOAF French Bread 69¢
DAZA BAKERY Apple Spiced Donuts \$1.59 DOZ.	6" Submarine Sandwiches by order We Do Catering for every occasion Hot or Cold Sandwiches to go Register for FREE Birthday Cake

"We're Fighting Inflation"

WALLCOVERINGS WALLCOVERINGS WALLCOVERINGS

18 - 26% OFF

Also save on Vertical & Horizontal Blinds through, Sept. 30

Call Now for Appointment **627-4867**

Also Complete Line of Custom Draperies and Woven Woods

KDC Interiors

BID NOTICE

Springfield Township Parks & Recreation

Notice is hereby given that sealed bids or proposals will be received by the Township of Springfield, Oakland County, Michigan until **4 p.m. on Monday, October 1, 1979** for the following:

1. Remove old roofing
2. Replace damaged and rotten boards
3. Install drip edge
4. Cover roof with 90 lb., 19" salvage double coverage roofing
5. Seal lap edges

The building is 50 ft. by 100 ft., and is located at the Davisburg Mill Pond.

Bids to be opened at the Springfield Township Parks and Recreation Board meeting on October 8, 1979 at 8:00 p.m., at the Springfield Township Hall, 650 Broadway, Davisburg, Michigan 48019.

J. Calvin Walters
Springfield Township Clerk

services

THE DAVISBURG CANDLE FACTORY
 634 Davisburg Rd.
 New Candle Fall Colors!
 Exciting Gifts
 Come Browse
 Mon.-Fri. 9-4:30, Sat. 10-4:30, Sun. 12-4:30 634-4214



**Bess Bookkeeping
 and
 Accounting Service**
 ALLEN BESS
 260 (M-15) ORTONVILLE ROAD
 ORTONVILLE, MICH. 48462
 TELEPHONE 627-4014

A-1 EXCAVATING
 Asphalt
 Bull Dozing
 Private Roads
744-4586

Areas Newest and Most Modern Licensed Facility for..
**Dog and Cat
 Boarding - Grooming**

Stonington Kennels, Inc.
 11225 HORTON ROAD, GOODRICH
 636-2112
 Halfway Between Ortonville and Goodrich
 1/2 Mile West of M-15

**P
R
I
D
E**
 Barn Floors • Driveways
 Private Roads
**ASPHALT
 PAVING**
627-2233
 590 State Park Road

**MOORE'S
 DISPOSAL**
 RESIDENTIAL AND COMMERCIAL PICKUPS
625-9422

Your Lawn & Garden Deserve The Best
 Shredded & Screened
TOP SOIL • BLACK DIRT
 FILL DIRT • SAND • GRAVEL • STONE • WOOD CHIPS
QUALITY NURSERY STOCK
 MECHANICAL TREE PLANTING
Long Meadow Farms
 SINCE 1958
 1375 Sashabaw - North of Seymour Lk. Rd.
628-3408
 Open Six Days, 8 a.m. - 6 p.m.

ALL BREED DOG GROOMING
 by Martha Anderson
 Located in Ortonville Pickup and Delivery
627-2744 or 627-2919

New Roofs ReRoofs Tear Offs
D & R Roofing Contractors
 Roofing Cement
 Driveway Patios Sidewalk
 Garages Footings
 All Phases of Flat Work
 Fast Service **698-3636** Free Estimates **673-3069**

P.M.H. REALTY & BUILDING INC.
 CALL US FOR ALL YOUR REAL ESTATE NEEDS
 AND ASK ABOUT OUR MODULAR HOMES!!!
674-0337

r. h. Plumbing Co.
 Service 24 Hours Free Estimates
 Rod Hitchcock
 Master Plumber
 627-3682 627-4223

B & B Roofing & Construction
 All roofing and gutters guaranteed
 Reasonable Prices 240 Shingles Repairs
FREE ESTIMATES 636-2121

"FOR LAND'S SAKE!"
 Call **OXFORD PEAT CO.**
 For All Your Earthy Needs
**CUSTOM BLENDED PROCESSED
 PEAT • TOP SOIL**
628-5991
 SAND • GRAVEL • STONE
 MANURE • WOOD CHIPS



BLACK DIRT TOP SOIL WOOD CHIPS
KAY TRUCKING
 Fill - Dirt - Sand - Gravel
 Bill Kay **627-2367**



Holly Hills Campsites
 Grange Hall Road Exit
 • Family Camping • Seasonal Rates • Large Shaded Lots
 Swimming Pool • Winter Sports • Motorcycle Trails • Electrical
 Hookups • Water Taps • Dumping Station • Winter Storage •
 Recreation Hall & Game Room • Clubs Welcome
 Holly, MI 48442 7072 East Grange Hall Rd. (313) 634-8821

FREE ESTIMATES **HENRY D. RICHMAN** 625-4492
BULLDOZING
 Prices at their lowest / Workmanship at its best

Nichols Home Services
 Heating - Cooling - Appliances & Grills
625-0581

member **ABK** American Boarding Kennels Association
 Ann Burney
 Sallie A. Harroun
BURNEY'S ARK, INC.
 Boarding Dogs & Cats
 3100 Granger Rd. Ortonville, MI 48462 **627-2929**

WELL DRILLING
 4" and 6"
PUMPS & SERVICE
 State License No. 1625
 Call **Joe LaPorte**
 Ph: **623-0726**

**ONE MORE TIME
 ONE MORE TIME
 RESALE SHOP**
 Large selection of
 furniture to keep you
 warm this winter.
 No consignments on
 Wed. or Sat.
 6 N. Main St., near Clarkston
625-1166

**Carpet and Upholstery
 Cleaning**
 by *Couture & Steiner*
 FOR a Free Estimate
 Call **625-2107 or 625-1117**

THE HEAD HUT
 HAIR STYLING
 442 M-15 Ortonville **627-2560**



RANCH HOUSE LAUNDROMAT
 930 M-15
 Ortonville
 627-9807
 Laundry Drop Off Service Daily
 Dry Cleaning Service Monday & Thursday
 A DIVISION OF FERRELL ENT., INC. **PAT & MARION**



want ads

Mending And Light Sewing-Reasonable rates. 394-0614, 394-0976

Looking For Security-Second Income Can Provide. The path to security is only a decision and a phone call away. We train you. Phone or write local Amway Distributor. Jo-Ann Monroe, 6062 Waldon Rd., Clarkston, MI 48016; Phone 625-3787

Custom Draperies, Call 625-8815

FOR SALE

Three buildings to be moved or dismantled by buyer. To be paid in advance. Buildings are at 13375 Hess Road, Holly, Mich. Consist of house, barn and garage. Bids to be taken at Holly State Recreation Area, 8100 Grange Hall Road, Holly, Mich. Phone 634-8811 on or before Oct. 6, 1979.

PRODUCTION PERSONNEL

Burkland, Inc., located in Goodrich, MI., as a leader in the field of fineblanking.

We are expanding and need additional help experienced in working with presses and other metalworking machines.

We offer good wages and complete benefits. Stop in and fill out an application at:

Burkland, Inc.,
6520 S. State Rd. (M-15)
Goodrich, MI 48438

Stanley Home Products Need You!! For information call Wanda Timmons, 628-5419 after 5 p.m. or Karen Jaenichen, 625-2182

Farm Gas Tank. Hose, hand pump & nozzle, \$110. 627-2718

For Sale - 1973 Ford 4 wheel drive pickup. Best offer, 636-2094.

1979 Sunbird Wagon - Automatic, air, power steering/brakes 8,000 miles, \$4,300. 627-3788

Flute With Stand For Sale, Gemeinhardt, excellent condition, \$150. 627-4302

Clean, Convenient Comfort! Portable kerosene space heaters, C.J. & B-A-Wood & Wax, 8355 S. State Road, Goodrich, MI; 636-7935.

1978 Coachman Leprechaun Motorhome, loaded with extras; excellent condition, 11,000 miles- 636-2881.

Apples-U-Pick: MacIntosh, Delicious, and Johnathan. After 4 weekdays and after 10 on weekends. Pacer's Orchard, 10380 Gibbs Road, Holly. Call 634-8112.

PIANO TUNING

Excellent results, guaranteed. Call Chuck, 338-3829

Garage Sale - Thurs-Sat., 9 to dusk. Table & chairs, air conditioner, Fisher stereo, Hoover vacuum, clothes and more. Oakwood Rd. to State Park Rd. to 1181 Honert Rd.

Necchi Dial-A-Matic Zig Zag sewing machine in modern walnut cabinet-makes designs, appliques, buttonholes, etc. repossessed. Pay off \$53 cash or monthly payments. Guaranteed, Universal Sewing Center. FE4-0905

Apples - Large Beautiful MacIntosh, Wagner, Cortland 7.50 bu. Red Jonathon, R.I. Greening, Red Delicious available soon. Cider, \$1.95 gal. 9500 Bridge Lake Road, Clarkston. 625-3027

Garage Sale - Thursday, Friday, Saturday. Dishes, 2 bikes, clothing, pictures-misc. 361 Cedar St., Ortonville

Moving Sale - Furniture, 2 wood stoves, 2 dirt bikes, lawn mower, washer, dryer, dishes, canning jars, lots more. 2574 Perry Lake Road, just north of Seymour Lake Road, September 20, 21, 22. 627-4533

Personalized Landscape Plans - Complete, landscape plans drawn; front or back for \$10, entire lot for \$25. State licensed and inspected nursery stock. Save 40 to 60% over most other garden centers. P.E.A.T.S. Nursery, Bonnie Hale, 627-4364

By Owner: Clarkston Area, Near High School. Cape Cod, 3 bedroom, 2 full baths, fireplace, full basement, built-ins, on paved street. \$62,000. 625-4936

Catch That Winter Flu - Before it catches you. Fireplace, oil burners & woodstove flues. Be safe not sorry. Duncan's Chimney Sweep Service; for appointment 623-9307, many area references available upon request.

Corvette Hood, 1978 - small crack-best offer. 625-1119

Antique Pot Belly Stove, "Mighty Oak", good condition, \$150. 625-1119

Hay Wagon, New M.F. Chasis, \$400. 30' good alum. extension ladder, \$30. 24' wood extension ladder, \$12. 8350 Perry Rd.-Atlas

Say You Saw It In The Reminder

AUCTION SALE

Saturday, Sept. 22, 1979, 10 a.m.

6535 Highland Rd. (M-59) Waterford Twp.
Across from Oakland-Pontiac Airport

Selling at (VAULT) No. J-13 personal properties of Herbert Straley consisting of household-misc., and some antiques

TERMS - CASH
Lunch on Grounds

GAIL WINTER, Auctioneer
Area (313) 673-9298

Garage Sale-Saturday, 9-6. Corner of Ellis & Kier.

1971 Plymouth 2 Door - PS/PB, 39,000 actual miles, like new interior. 625-4572

1/2 H.P. Earth Pool Filter, handles 20 ft. round pool, \$50. 625-4572

1973 Capri - 2 Dr. V-6 Engine, runs good-good transportation, \$600 or best offer. 625-4572

33x18 Ft. Oval Pool-W/Industrial 3/4 H.P. Ampho sand filter plus accessories, now standing. Will help dismantle. 625-4572

16x7 1/4' Rigid 1 Piece Steel garage door, \$150 with springs, hardware and mounts, 625-4572

Wanted - Babysitter before and after school, Clarkston. 625-0854

An Oldie But A Goodie - 15' Fiberglass runabout 35 h.p. Evinrude EL. Extras, Ajax trailer, good ski boat, make offer. 627-4295

For Sale - 2 Seater Sand Rail buggy frame-engine-front end-trans axel-extra parts; \$500. 627-4292 after 5 p.m.

Say You
Saw It In
The Reminder

Shaklee

Full or Part-Time
You Get Paid for
The effort you put in.
Your Area
Shaklee Rep. **625-2362**

Jasper Ceramics; Porcelain dolls, stoneware, certified Mayco teacher. 625-2197, 625-2111.

Convenient Store Clerks-Join a rapidly expanding company with plenty of advancement. We need mature females and males to start immediately. Applicants must be 18 yrs. old and must be able to handle responsibility and wants to work. Apply at Stop-in Foods, 10759 Dixie Hwy., Davisburg.

Trash and Rubbish Removed-Reasonable rates. Call after 4 p.m. 625-5582.

Hadley Horse Farm-Horses boarded. New barn, lots of TLC. \$85.00. Call evenings, 625-4554.

Voluntary Pay Needed to Offset Additional Expenses

With this article The Reminder is announcing a voluntary pay program whereby readers can help defray some of the costs we incur in delivering The Reminder to you.

The Reminder is delivered to you free every week. It has been delivered free to area residents in our Zone 1 area for over 27 years. Zone 2 residents have received it every Wednesday for over two years.

The cost of printing and delivering continues to rise. Both our printers and deliverers have hiked our price twice in the last year. These costs have been born by The Reminder and by the advertisers who use The Reminder to let you know about the quality merchandise, services, and prices that they have to offer.

The Reminder is now offering you the opportunity to help it overcome those costs in getting the paper to you.

We've pronounced September, "Voluntary Pay Subscription Month." If you enjoy receiving The Reminder and wish to participate in this voluntary pay program, just fill out the coupon and mail with five dollars to The Reminder, 8062 Ortonville Road, Clarkston, 48016.

In return for your contribution you will receive three 50 cent discount coupons to be redeemed when you place want ads in The Reminder.

Remember, this is a voluntary program. The Reminder will continue to be delivered to you weekly whether you wish to participate or not.

Mike Wilcox

APPLICATION THE REMINDER ZONE TWO VOLUNTARY PAY SUBSCRIPTION

I _____
Address _____
wish to participate in The Reminder Voluntary Pay Subscription program.
Here is my \$ 5.00 for a one year voluntary subscription.

Mail to:
8062
Ortonville
Road
Clarkston
48016

Room For Rent: Working adults only. \$55 week. 625-9120

For Sale - Excellent Oil Furnace, 125 BTU's, 200 gal. of oil & oil tank, \$125. Must remove. Phone 625-5173 after 4 p.m.

Carpenter For Hire-Home repairs. Call 627-2744, ask for Steve Felker.

Work Wanted-Experienced exterior and interior painter. Also will take staining work. Call 625-0933.

Red Raspberries-U-Pick, Plentiful 16 acres Svmanzik's Berry Farm. M-15, 2 1/2 miles north of Ortonville, or 2 1/2 miles south of Goodrich, to Horton Rd., west 2 1/2 miles to Gale, north 1 block to east Baldwin Rd., west 1/2 mile to 8146 East Baldwin, Goodrich. (313) 636-7714.

Wanted-Responsible party to take over low monthly payment on spinet piano. Can be seen locally. Write credit Manager: P.O. Box 537, Shelbyville, Ind. 46176.

Bulldozer & Backhoe - Work reasonable & available. 797-4498.

Storage-Hand dry storage available everything from personal articles to recreational vehicles. Also room available for hay, grain, building materials, even closet to hang skeltons. Call Gallery Office Center. 627-2851.

Horseshoeing-Fred Lentz Master Farrier. 627-4346.

Bulldozing, Low Rates-B.C.H. Enterprises, Inc. 625-1738.

Bulldozing, Crawler Loader Work-Trucking sands, gravels, top soil, peat, black dirt, driveways installed. Johnson & Sons. 636-2104.

Plowing, Hay Baling, Discing, Etc.-All types of farm tractor work done. No job too big. Call now 627-4346.

NEW GLASS CANISTERS

Old Fashioned Spring-Clamped Canning Jar Style



Jars also in:
Munchies, Spaghetti,
Pop Corn, Salt & Pepper's

Willow Pointe

FLOWERS-GIFTS-ANTIQUES-CRAFT SUPPLIES
425 M-15 Ortonville 627-4340

Hot Roofing-21 years experience. Journeyman roofer. Industrial, commercial, residential. Workman Roofing, Holly. 634-5279.

Windpower, Windmill Sales & Parts-2950 Bird Rd., Ortonville. After 5 or weekends.

Great Looking 1979 Chev. 1/2 ton, Silverado, ps, pb, pw, radio, 305 V-8, topper, tinted glass, step bumper, sliding rear window, cruise, CB radio, radials, deluxe wheels, trailer ball & harness, headlight warn., automatic, chrome grill glide-out spare carrier, two tone paint, stain, steel below eyeliner mirrors, low mileage. Must See. Great price, 628-1486

Sale on 3 point Wood's Brothers Mowers. Massey Ferguson 35 clean. Allis Chalmers D-14 with Front loader. International H with loader. 3 point snow blowers and blades. Elevators, gravity box. Dave Steiner Farm Equipment, 694-5314

Pole Buildings for garages, horse barns, workshops, storage, farm, etc. Priced \$3550 for a 24x40 building erected with overhead & service door. Also larger sizes. Call anytime toll free 1-800-632-2725 Phoenix Buildings.

Piano Tuning-C. Smith. 627-3554.

1965 Chevy 396 SS; Florida car. 1974 F-250 Pickup, both in nice shape. \$1,200 ea. 634-3940

For Sale-1979 Chevette, 4 dr., auto., good condition. After 4. 627-3964

For Sale-75 H.P. Johnson outboard motor with controls, good condition, just tuned-extras. Weekdays after 6 p.m. or weekends; \$675. 627-4215

Balconies and Decks-Will build to suit. Call 625-0798.

1976 Catalina; 2 dr., pb, ps, air, cruise control, excellent condition. 625-5420 10-6; 625-3127 after 6.

Refrigerator and Freezer Repair Service-Evenings-weekends. 625-4469. Good used refrigerators.

Hay First & Second Cutting, Mixed alfalfa; various prices. Goodrich location. 636-2755; 232-3695

For Sale-Registered Morgan Horses, Beautiful bay gelding, 5 yrs. old, 15 hands, mare in foal, black stallion. Cutter for winter enjoyment, real good condition. Blacksmith anvil. Goodrich, 636-2755, Flint 232-3695

Piano, Organ Lessons -Beginning, advanced, Ortonville area; \$4.50. 627-3189

Sofa -Like new-62" custom slipcover; \$185. 625-3137

Horseshoeing -Dependable, reasonable. Call Bill Schuyler, 678-2993.

Firewood -98% split, seasoned Oak; delivered \$40 first face cord, \$37.50 each additional cord, same delivery. Phone 627-2821, 634-8054

1978 Buick Century Custom Wagon -Automatic, 301 V-8, cruise, rear window defroster, etc. Excellent condition. 627-2743

Shrub Sale! 25 to 50% off. See our ad! Ortonville Stockyard, M-15 & Mill Street. 627-4360

For Sale -40 yds. gold carpeting, good condition, best offer. 625-2187 after 6 p.m.

Mare For Sale -13.2 hands, must sell. Name price. 636-2593

WINDOW QUILT
Insulation for Windows

Throw a quilt over your window and cut heating bills by as much as 50%

HERON'S NEST
102 W. Maple, downtown Holly 634-5442

AKC Yorkshire Terriers -Mother & puppies. Deposit will hold. Vet checked with shots. Bred for beauty and good disposition. 628-7174 or 373-6198

1977 Trans Am -Silver, velour interior, PS/PB, air, rear defroster, undercoated, mags; \$5,000. Super Car. 625-1126

Share A Home -Room for rent. Call 627-4563

Wanted-Drywall Bids -Approx. 2,000 sq. foot residential home-call weekends or after 5:30 p.m. weekdays, 627-3845 or 628-9456.

For Sale - 1974 Duster, 318 C.I.D., 3 on the floor, sport wheels, bucket seats, new exhaust, 2 new tires, 49,000 miles, \$1,100. 627-2376

Boothby's Old Farm Shop, 20% off "Wilton Armetale" thru October. Dixie at White Lake. 625-5100

For Sale - Cement Mixer, Utility Trailer, pair of 1935 Ford wire wheels; electric water heater (52 gal.) antique buffet, electric stove 30", complete double bed & dresser. Call 634-7976 or 625-3192

Cash Paid For American Gold or silver coins. Call Ken, 627-2138

Painting & Decorating; Interior, Exterior wallpapering. 627-3443, 627-2221

For Rent - Goodrich- 4 bedroom house, \$325 per month, first & last months rent required. Available after September 28. 636-2115

Horses Boarded -Goodrich Area, \$65 per month. Call Gallery of Homes, 627-2851

Huge 4-Family Garage Sale -Clipper Ct. Sub. on Corner of Seymour Lake Road & Sashahaw. Lots of adults & kids clothes-dishes, Sealy box springs, furniture, toys galore-baby items, you won't believe the bargains! Sept. 17 thru 22.

General Housecleaning, Expanding area, Exp. & ref. 627-3504

Woman Wants House Keeping Jobs or babysitting job, needs transportation. 627-4123.

Mazda, 1977 GLC Automatic, radial, green, rustproofed, 36,000 miles, 26-35 mpg, \$2,900. After 7, 852-1754

Bundy Trombone, Exc. cond., \$150 or best offer. 627-2088 after 5.

Singer Dial-A-Matic Zig Zag sewing machine. Embroiders, appliques, buttonholes, etc. Late models, school trade-ins. Monthly or \$59 cash. New machine guarantee. Universal Sewing Center. FE4-0905

Builders -Construction foreman, general contractors, experienced only to train as, area manager for national construction company. Paid training program. Unlimited earnings potentials. Must have truck, tools and ability to manage people. Call collect anytime, 616-468-7163

Wanted - Part Time Carpet installer. 627-3552

TIME ON YOUR HANDS?

Sell Avon. You set your own hours while the kids are in school. Meet interesting people. Call Mary Lou Seelbinder, 627-3116

Woodstove Headquarters -Old Timers, Woodys, Dierra-Hearth stove. Black-Bart, fireplace insert furnace adapting models. Energy-Mate, Southern-Air, Royal Furnace models will arrive in approximately 3 wks., literature available-Ortonville Stockyard, corner of M-15 & Mill St., 627-4360.

HELP WANTED.

Asphalt paving, must have transportation and phone. No experience necessary but helpful. Pride Construction, 627-2233

Tractor, Ford -3 pt. hitch, mow blade, cultivator, must sell, \$2,200. 627-2172

Will Pasture, Board Horses or rent pasture and barn, excellent facilities. 627-2743

Dog Food -Peerless-21%, 7.49-50 lb.; 24%, 8.29 50 lb.; 24%, Crunchy-8.99. Ortonville Stockyard.

Two Bedroom Apartments For Rent -Taking applications, call 627-2838, ask for Anita.

Woman Would Like House Cleaning and will do windows-reasonable. 625-5619

3 Family Garage Sale-Lawn sweeper, like new; Go-Cart, toys, lots of misc. 5989 Princess Lane, Thursday-Friday, Saturday, 9-5.

Roofing -Shingles, guaranteed work, low rates - 12 years experience. Free estimates. Evenings 628-2084.

TYPIST I & II

We are currently recruiting to fill CETA typist positions. In addition to meeting the CETA requirements, applicants must be H.S. grad. or G.E.D. equivalent and type 40 w.p.m. Typist II must also have 2 yrs. clerical experience within the last 5 yrs. or 6 mos. experience immediately after graduation from a business/vocational school. Salary: \$8,931 - \$11,546.

Qualified applicants must be a resident of Oakland County, excluding Waterford Twp. and the Cities of Pontiac, Troy, Royal Oak, Southfield, and Farmington Hills; have not voluntarily terminated full-time employment within 6 months prior to application, unemployed for at least 10 of the last 12 weeks prior to application and economically disadvantaged or receiving public assistance. Most positions require the applicant to be 18 years old and possess a driver's license. In addition, applicants must meet the specific qualifications for individual positions.

For further information or application package, please contact the Personnel Department:

Oakland County

1200 N. Telegraph • Pontiac, MI 48053
(313) 858-0530
An Equal Opportunity and Affirmative Action Employer
Daniel T. Murphy, County Executive

CLARKSTON CINEMA

6808 Dixie Hwy.
625 3133

Starts Friday Sept. 21



WALT DISNEY Productions

Unidentified Flying Oddball

TECHNICOLOR

Mon.-Thur. 7:45, Fri. 7:00-8:45
Sat.-Sun. 1:00-2:45
4:30-6:15-8:00

ALL SEATS \$1.50

Coming Young FRANKENSTEIN

WENUTA'S FOOD MARKET

Wines & Liquors
COMPLETE LIQUOR AND
BEVERAGE DEPARTMENT
FOR ALL YOUR PARTY NEEDS

Hours: Mon.-Sat. 9 am-9pm,
Open 7 days
for your shopping convenience

We reserve the right to limit quantities

CORNER OF
SASHABAW AND
WALTON ROADS
Phone: 674-3811



SALE DATES: THUR. SEPT. 20 THRU WED., SEPT. 26, 1979


Old Fashioned Personal Service at Supermarket Prices



PESCHKE 12 OZ.
SLICED BACON
69¢



FRESH U.S. GOV'T INSPECTED
WITH PORTION OF BACK
WHOLE FRYER LEGS
48¢ LB.



PESCHKE
BONELESS HAM
WHOLE **1.38** LB.
HALF **\$1.48** LB.

PESCHKE
ALL MEAT BOLOGNA
HERRUD ALL MEAT 1 LB. PKG.
HOT DOGS
FRESH GRADE A STUFFED
ROASTING CHICKEN

98¢ LB.
98¢
78¢ LB.

U.S.D.A. CHOICE ROUND BONE & ENGLISH CUT
CHUCK ROAST
FRESH EXTRA LEAN STUFFED
PORK CHOPS
\$1.58 LB.
\$1.88 LB.

FRESH BONELESS ROLLED & TIED
BOSTON PORK ROAST
FRESH EXTRA LEAN
PORK STEAK
U.S.D.A. CHOICE BLADE CUT
CHUCK ROAST
\$1.08 LB.
\$1.19 LB.
\$1.28 LB.



ALL FLAVORS 3 OZ.
JELLO GELATIN
5/\$1



25 OZ.
MOTT'S APPLESAUCE
48¢



SKIPPY CREAMY & CRUNCHY
18 OZ.
PEANUT BUTTER
98¢



KRAFT 16 OZ.
FRENCH DRESSING
88¢

TREESWEET PINK 48 OZ.
GRAPEFRUIT JUICE
LAUNDRY 72 OZ.
PUREX DETERGENT
68¢
\$1.38

KELLOGG'S ALL VARIETIES 11 OZ.
POP TARTS
PACESETTER DRY 25 LBS.
DOG FOOD
58¢
\$3.99

CHICKEN 6 OZ.
STOVE TOP STUFFING
CARNATION MILK CHOCOLATE 12 OZ.
INSTANT COCOA MIX
59¢
98¢

SAUCE 15% OZ.
HUNTS MANWICH
BROOKS HOT 15% OZ.
CHILI BEANS
58¢
3/\$1



DUNCAN HINES
CAKE MIXES
68¢



JUMBO ROLL
SO-DRI TOWELS
44¢



SPARTAN 12 OZ.
ORANGE JUICE
58¢



HAMILTON LARGE 1 DOZ.
WHITE EGGS
58¢

FROZEN
SPARTAN CRINKLE CUT 2 LB. BAG
FRENCH FRIES
58¢

ALL FLAVORS QUART
COUNTRY FRESH SHERBET
PET 9 OZ.
WHIPPED TOPPING
58¢
48¢

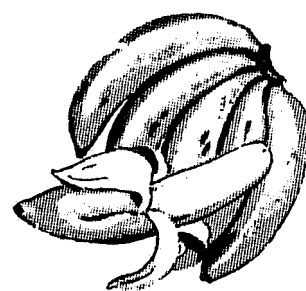
BAKERY

OVEN FRESH 1 1/4 LB. LOAF
LUMBERJACK BREAD
PLAIN & SUGAR
SPARTAN DONUTS
49¢
59¢

PRODUCE
BANANAS
18¢ LB.

FRESH 1 LB. PKG.
CARROTS
COOKING 3 LB. BAG
YELLOW ONIONS
25¢

FRESH
NECTARINES
48¢ LB.
MICHIGAN NO. 1 - 10 LB. BAG
POTATOES
78¢



DAIRY
COUNTRY FRESH 1/2 GAL.
SKIMMED MILK
59¢

QUARTERS 1 LB.
KEYKO MARGARINE
KRAFT 1 LB.
CHEESE WHIZ
48¢
\$1.58

ALL-MEAT
SALAY'S BOLOGNA
\$1.39 LB.
POLISH HAM
\$2.29 LB.